

V&V Reference Report

L2 ASCDS Version : 8.4.4

Observation 9421 - L2 Version 2
Chandra X-Ray Center

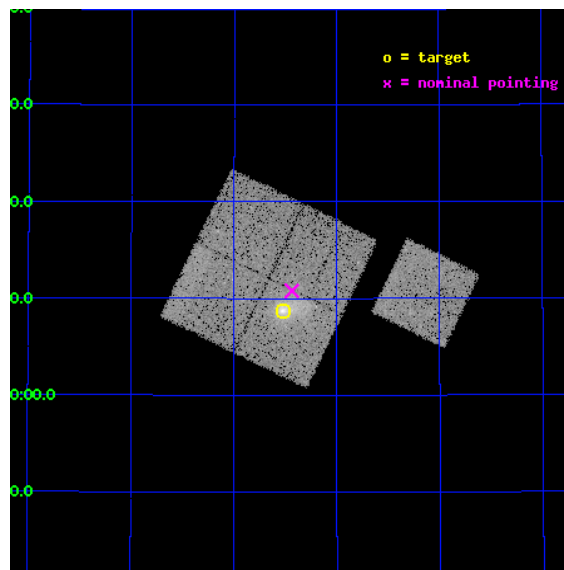
L2 Processing Date : May 8 2012

Contents

1	Front	2
2	OBI	3
2.1	OBI	3
2.1.1	Images	3
2.1.2	Bias	3
2.1.3	Parameters	4
2.1.4	Events	4
2.2	Compared Parameters	5
2.3	Aspect	6
2.4	Star Slots	9
2.4.1	Slot 3	9
2.4.2	Slot 4	10
2.4.3	Slot 5	11
2.4.4	Slot 6	12
2.4.5	Slot 7	13
2.5	FID Slots	14
2.5.1	Slot 0	14
2.5.2	Slot 1	15
2.5.3	Slot 2	16
A	Summary	17
A.1	Status	17
A.2	Comments	17

1 Front

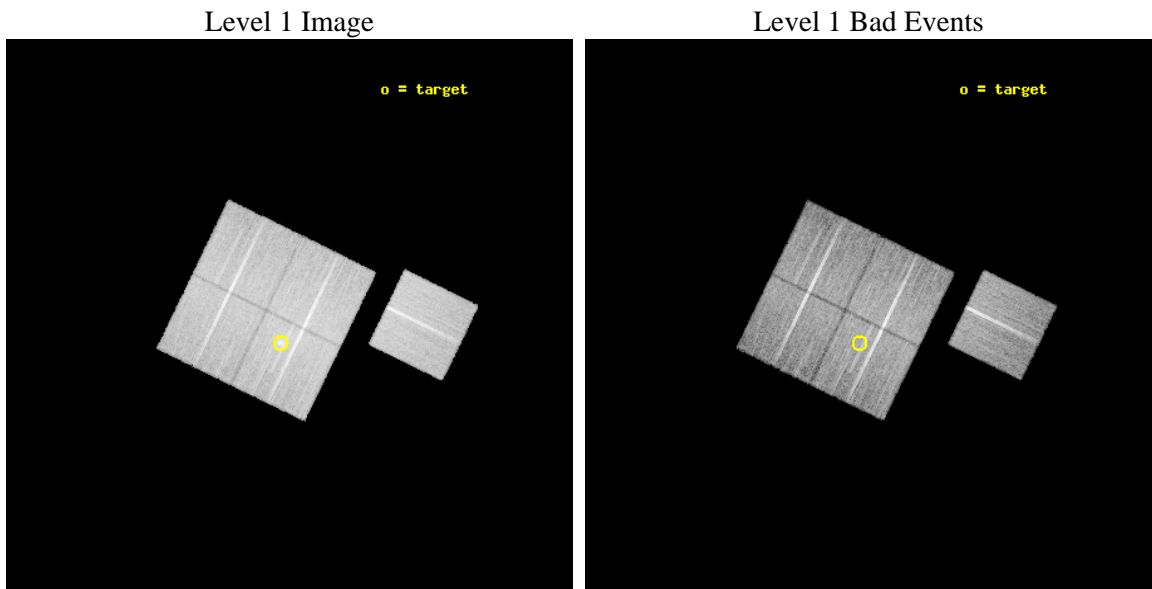
seq_num	800757	Sequence number
obs_id	9421	Observation id
title	LoCuSS: Cluster Mass Comparison with Chandra and HST -- Observational Discrepancy or Agreement in the New Millennium?	Proposal title
observer	Dr Graham Smith	Principal investigator
object	RXJ1000.5+4409	Source name
dtcycle	0	
cycle	P	events from which exps? Prim/Second/Both
ra_targ	150.129833	Observer's specified target RA [deg]
dec_targ	44.145139	Observer's specified target Dec [deg]
ra_nom	150.10915258514	Nominal RA [deg]
dec_nom	44.179826620703	Nominal Dec [deg]
roll_nom	115.99864891093	Nominal Roll [deg]
revision	2	Processing version of data
ontime	18724.000144005	Sum of GTIs [s]
livetime	18479.357297715	Livetime [s]
ontime0	18717.71813333	Sum of GTIs [s]
ontime1	18724.000144005	Sum of GTIs [s]
ontime2	18720.859143734	Sum of GTIs [s]
ontime3	18724.000144005	Sum of GTIs [s]
ontime6	18724.000144005	Sum of GTIs [s]
l2events	68927	Number of level 2 events



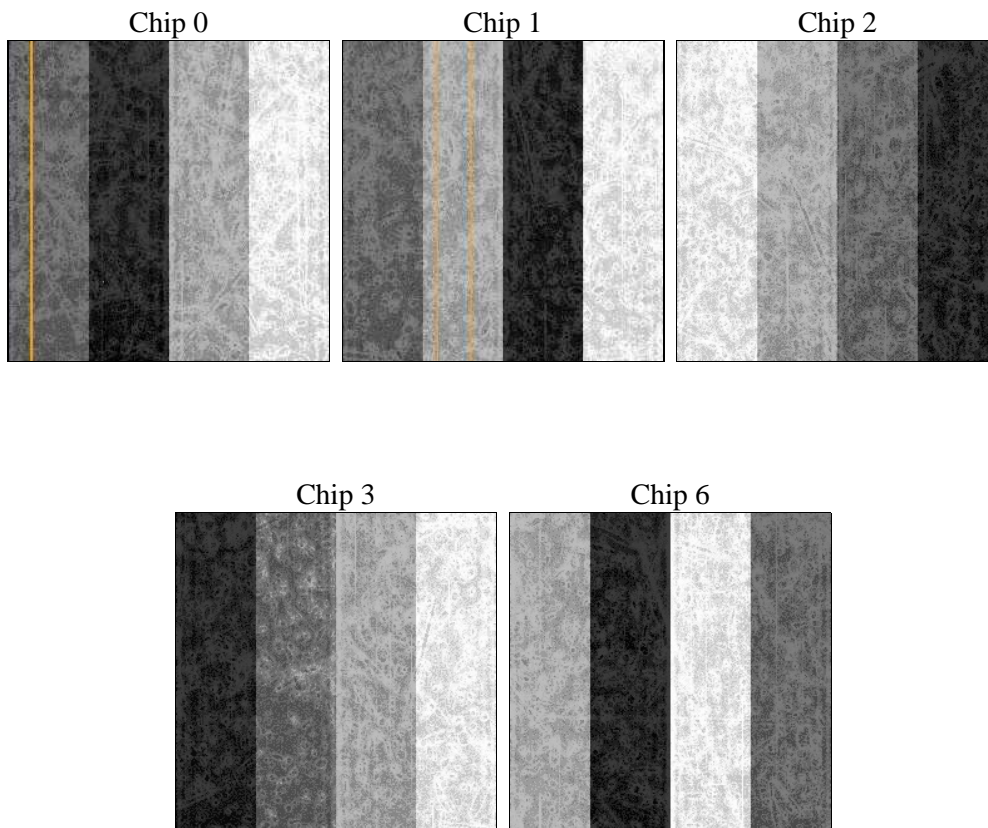
2 OBI

2.1 OBI

2.1.1 Images



2.1.2 Bias



2.1.3 Parameters

obi_num	0	Obi number	sched_exp_time	18550.000000	[s] Scheduled observation exposure time
ascdsver	8.4.4	Processing system revision	ontime	18724.000144005	Sum of GTIs [s]
caldbver	4.4.9	 	ontime0	18717.71813333	Sum of GTIs [s]
date	2012-05-08T02:15:37	Date and time of file creation	ontime1	18724.000144005	Sum of GTIs [s]
revision	2	Processing version of data	ontime2	18720.859143734	Sum of GTIs [s]
			ontime3	18724.000144005	Sum of GTIs [s]
			ontime6	18724.000144005	Sum of GTIs [s]
			l1events	796639	Number of level 1 events

2.1.4 Events

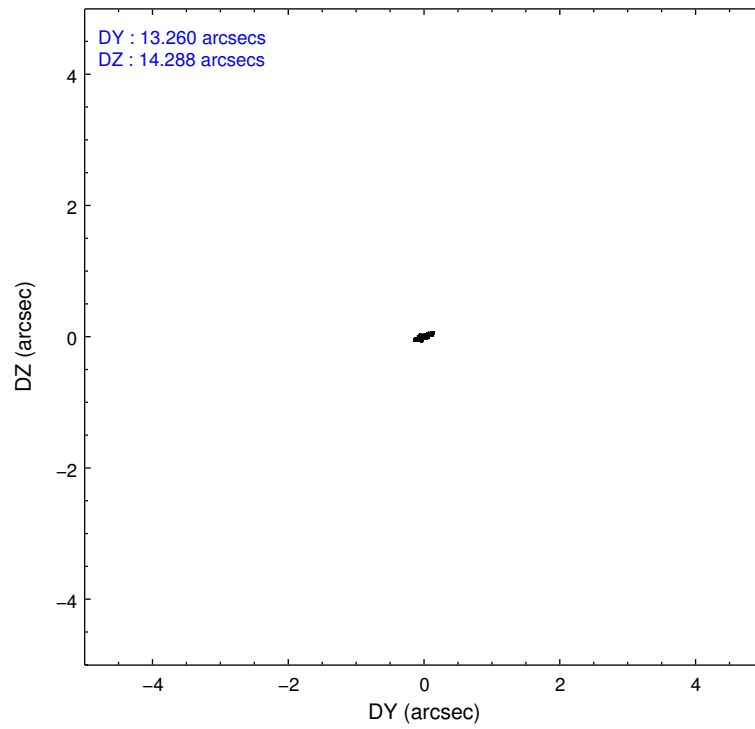
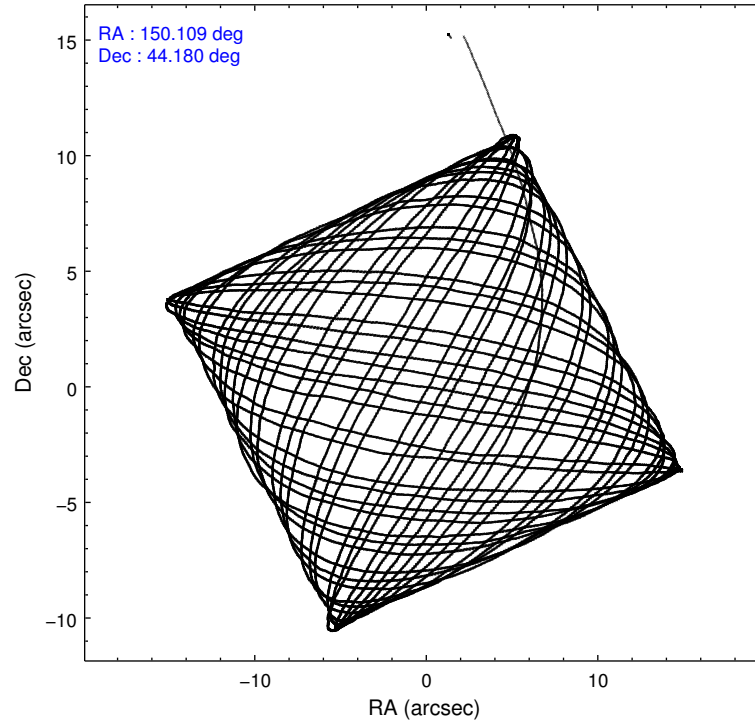
	ccd 0	ccd 1	ccd 2	ccd 3	ccd 6
level 1 events	149069	146135	172087	169321	160027
rejected events	134465	129524	157700	148648	144830
rejected %	90%	88%	91%	87%	90%

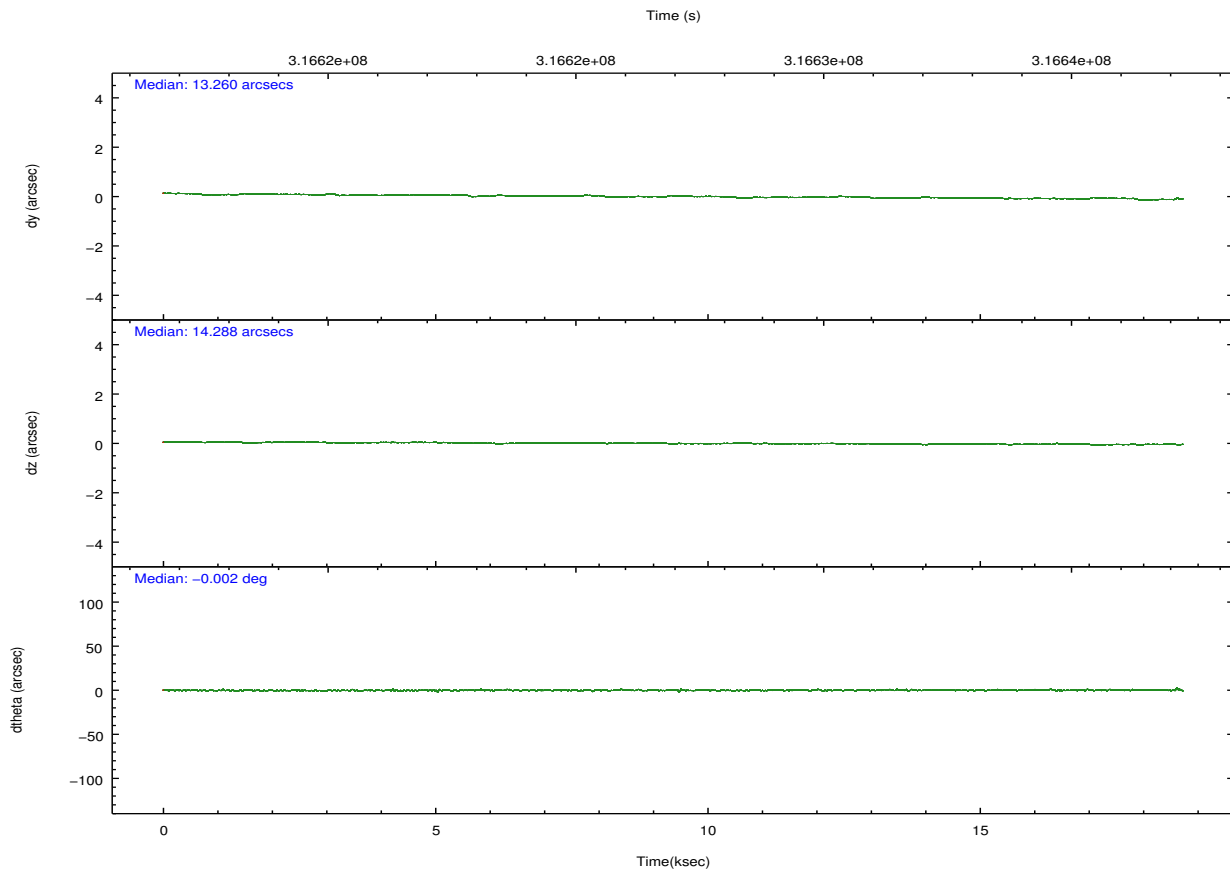
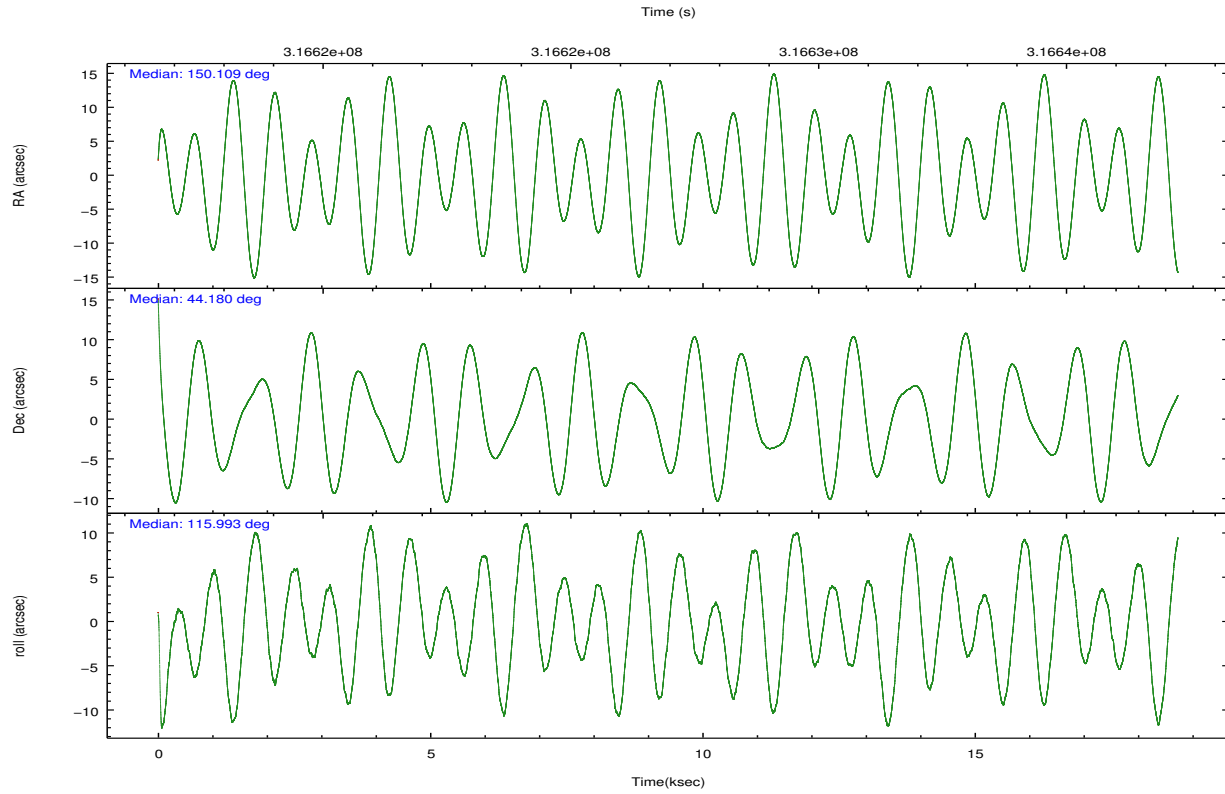
	ccd 0	ccd 1	ccd 2	ccd 3	ccd 6
grade 0 events	5324	6287	5678	11088	5693
	3%	4%	3%	6%	3%
grade 1 events	78	63	83	127	70
	0%	0%	0%	0%	0%
grade 2 events	3756	4143	3618	3756	3492
	2%	2%	2%	2%	2%
grade 3 events	1758	1851	1627	1929	1761
	1%	1%	0%	1%	1%
grade 4 events	1753	1856	1671	1811	1760
	1%	1%	0%	1%	1%
grade 5 events	5516	6227	5185	6378	6420
	3%	4%	3%	3%	4%
grade 6 events	3048	3679	2861	3155	3604
	2%	2%	1%	1%	2%
grade 7 events	127836	122029	151364	141077	137227
	85%	83%	87%	83%	85%

2.2 Compared Parameters

Parameter	Planned	Actual	Parameter	Planned	Actual
Instrument	ACIS	ACIS	Obspar format version number	7	7
Detector	ACIS-01236	ACIS-01236	Obspar file type	PREDICTED	ACTUAL
Grating	NONE	NONE	Obspar update status	NONE	UPDATED
Data mode	VFAINT	VFAINT	Number of optional ACIS chips dropped	0	0
Observation mode	POINTING	POINTING	On-chip summing requested	N	N
[deg] Pointing RA	150.141014	150.1091525851365	Subarray requested	NONE	NONE
[deg] Pointing Dec	44.164561	44.1798266207031	Alternating exposures requested	N	N
[deg] Pointing Roll	115.767754	115.998648910928	[s] Primary exposure time	0.000000	3.1
[mm] SIM focus pos	-0.782348	-0.7809083437167272			
[mm] SIM defocus	0	0.001439871863259334			
[mm] SIM translation stage pos	-227.592463	-227.5933067819097			
[mm] SIM translation stage offset	-6	-5.999146221020027			
[s] Observation start time (MET)	316617772.184000	316616110.88035			
Observation start date	2008-01-13T13:21:47	2008-01-13T12:55:10			
[s] Observation end time (MET)	316636322.184000	316636905.05636			
Observation end date	2008-01-13T18:30:57	2008-01-13T18:41:45			
Read mode	TIMED	TIMED			

2.3 Aspect



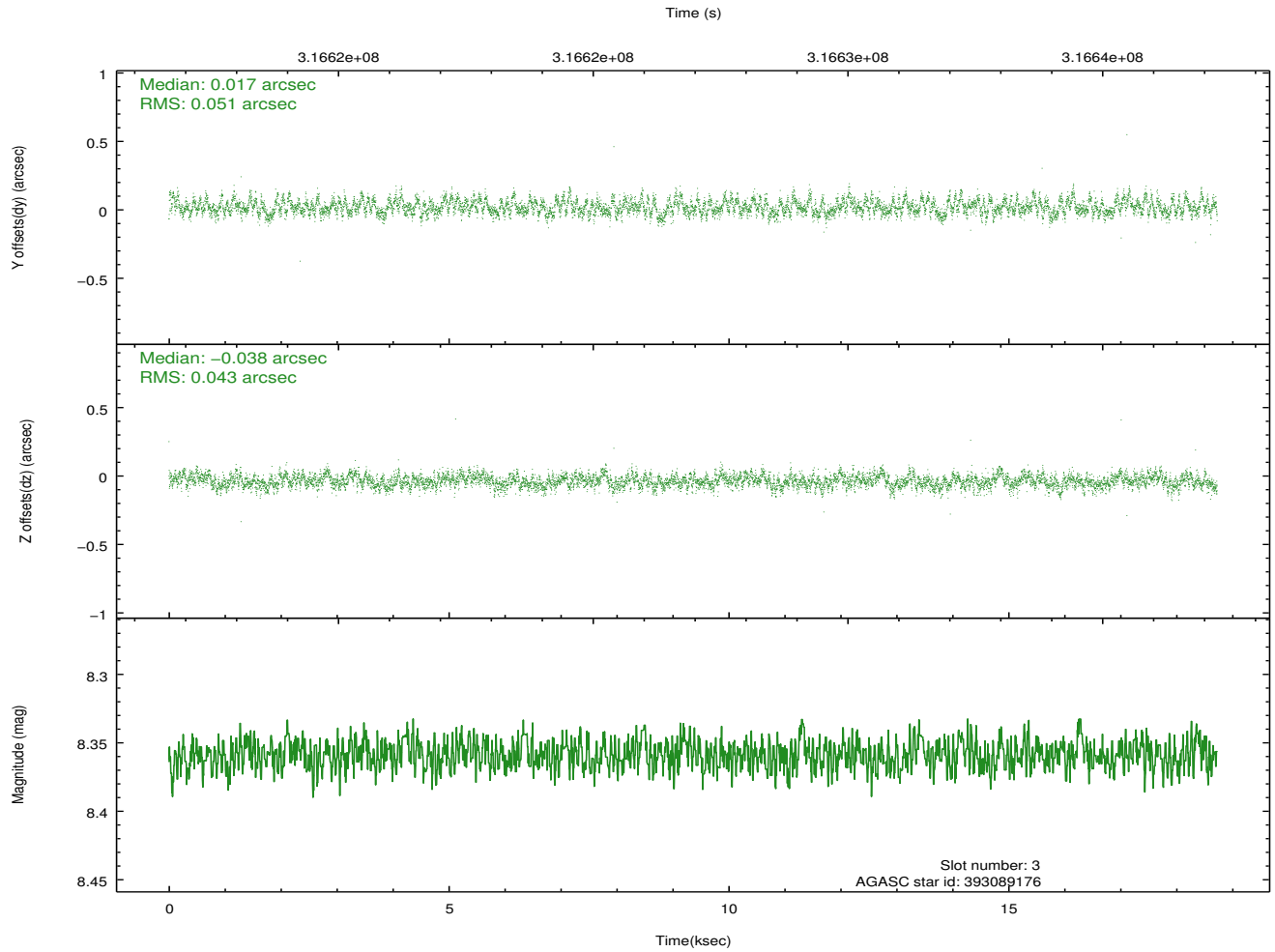
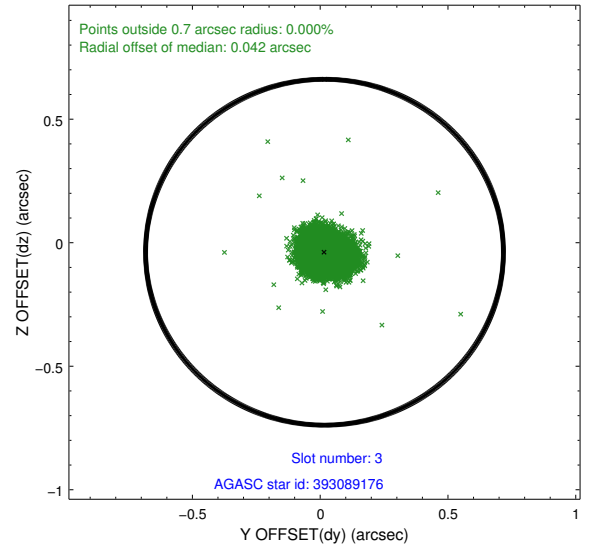
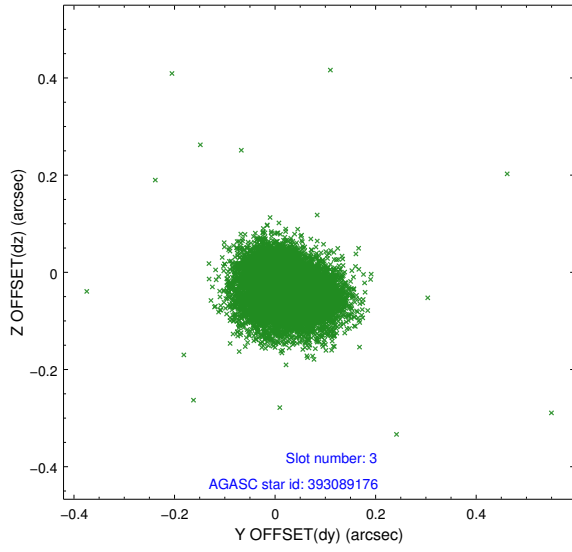


Slot Statistics

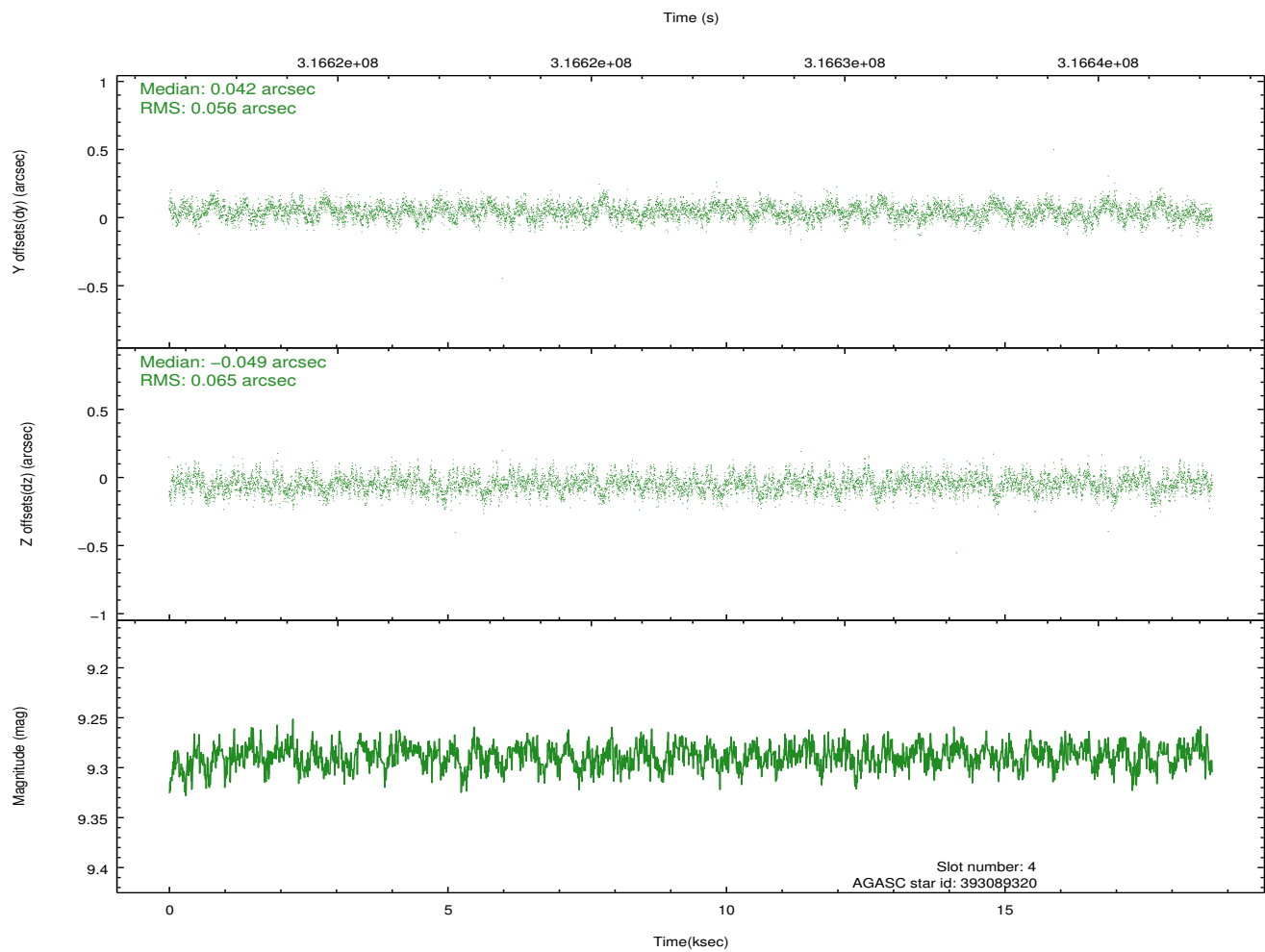
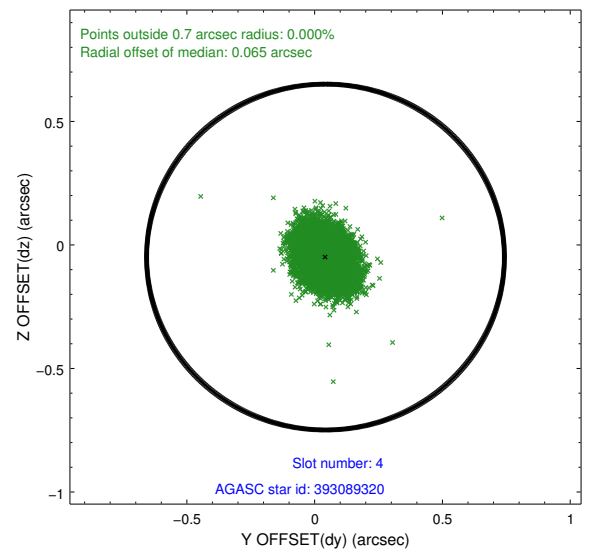
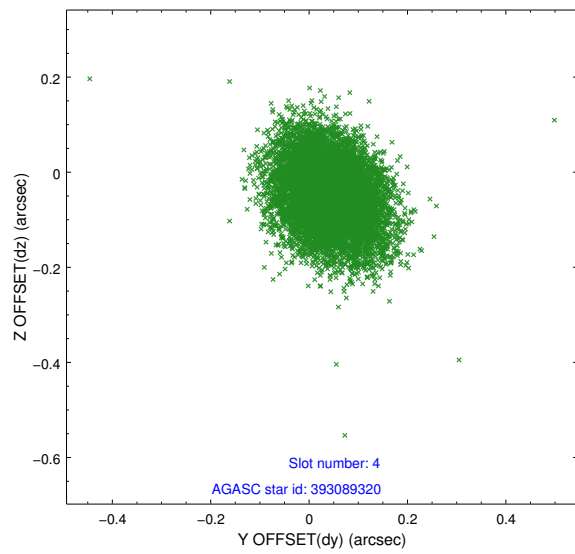
slot	status	id	mag	n_pts	med_dy	med_dz	dr1	dr2	ra	dec	mean_y	mean_z
0	FID	ACIS-I-1	7.23	4567	0.105	-0.051	0.006	0.011	0.000000	0.000000	926.25	-961.05
1	FID	ACIS-I-5	7.22	4568	-0.270	0.092	0.006	0.011	0.000000	0.000000	-1822.13	936.43
2	FID	ACIS-I-6	7.24	4566	0.074	0.030	0.007	0.012	0.000000	0.000000	391.51	1581.13
3	GUIDE	393089176	8.36	9135	0.017	-0.038	0.070	0.111	149.746372	43.451880	-1860.26	2043.29
4	GUIDE	393089320	9.29	9127	0.042	-0.049	0.090	0.148	149.571356	43.759272	-665.59	1966.32
5	GUIDE	394003312	9.48	9096	-0.073	0.103	0.130	0.202	150.173666	44.457808	914.39	-533.86
6	GUIDE	394004648	9.69	9124	0.079	-0.058	0.145	0.225	150.130931	43.995358	-536.83	288.41
7	GUIDE	394008928	8.50	9131	-0.072	0.037	0.069	0.110	150.306126	43.667077	-1799.34	391.33

2.4 Star Slots

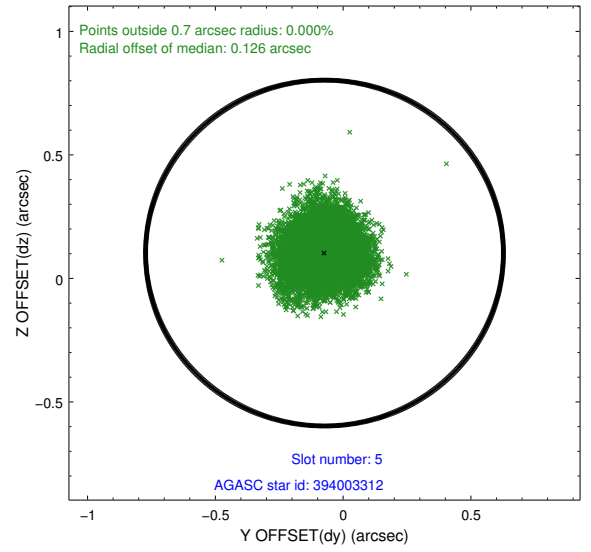
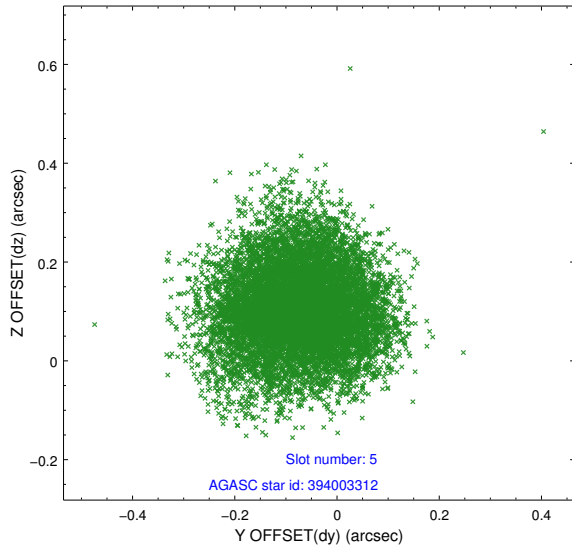
2.4.1 Slot 3



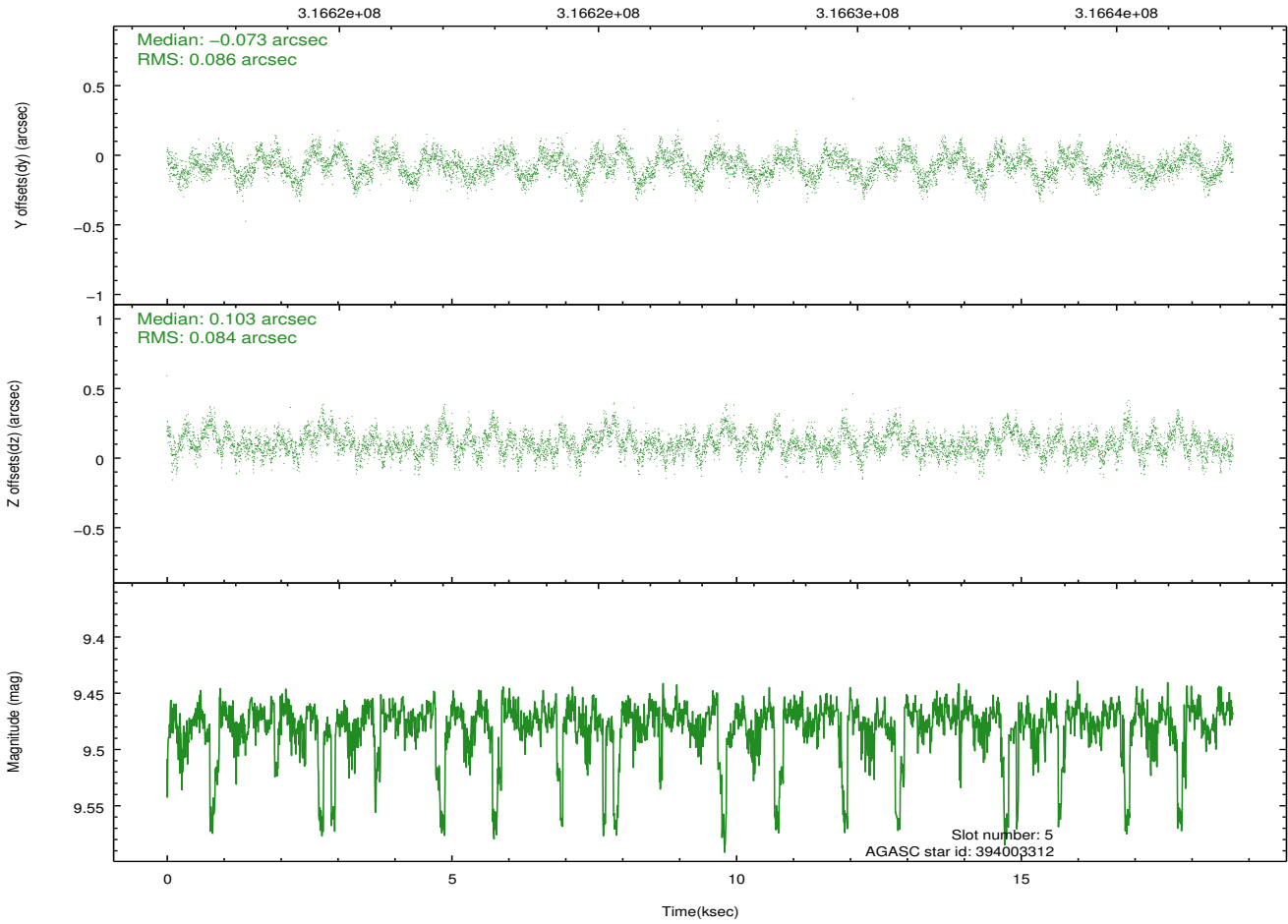
2.4.2 Slot 4



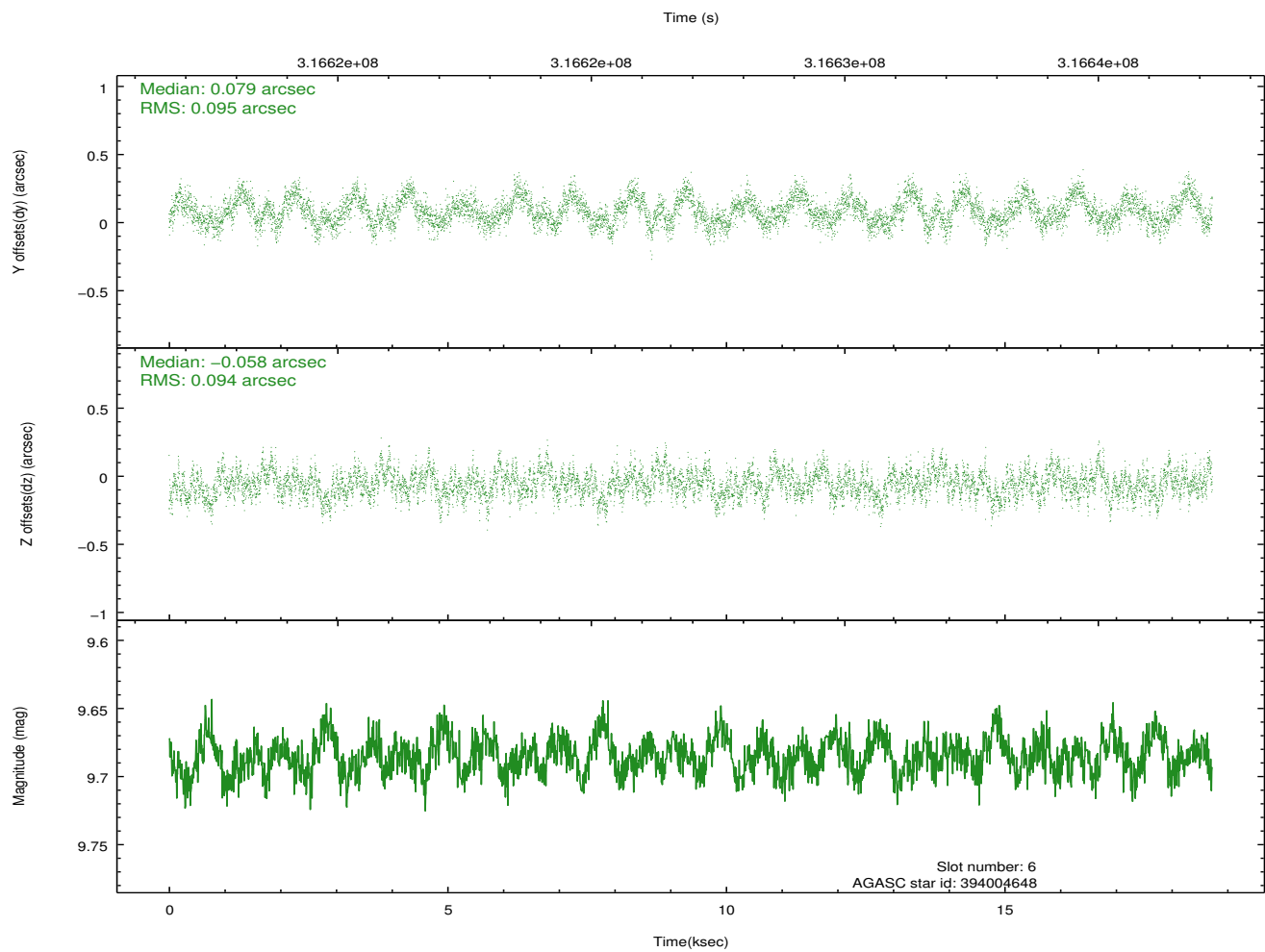
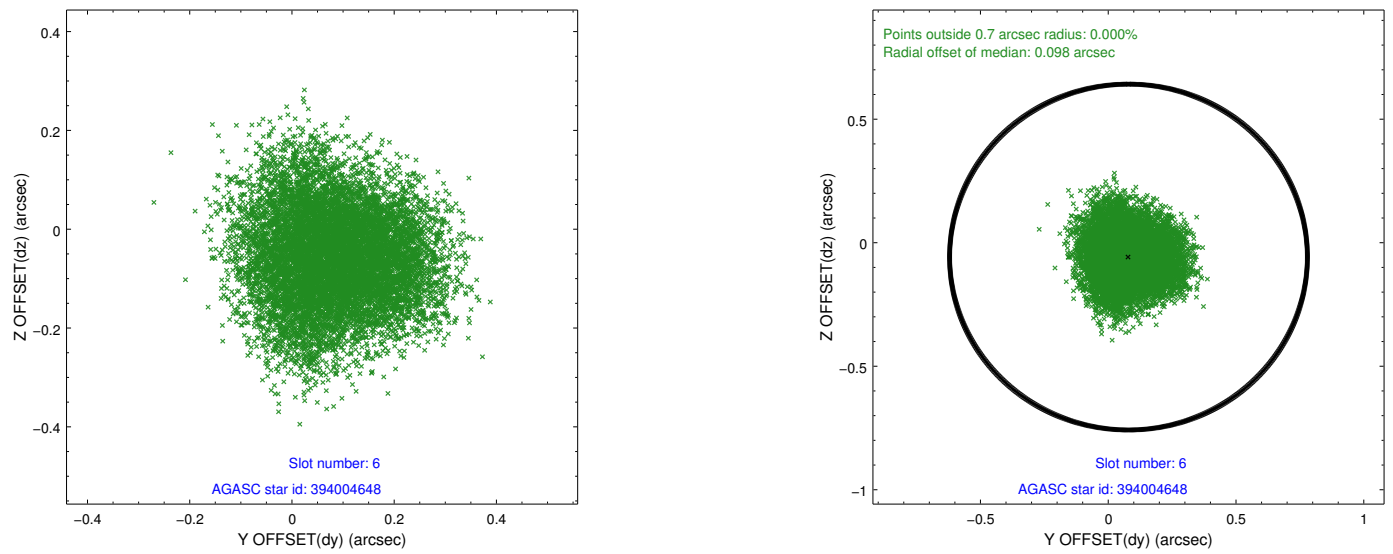
2.4.3 Slot 5



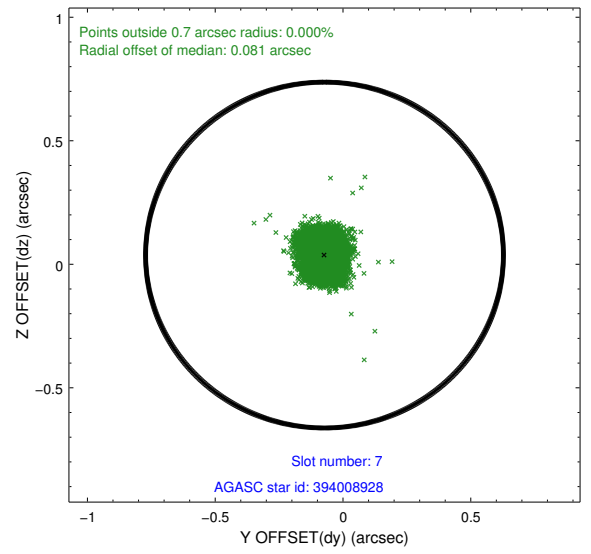
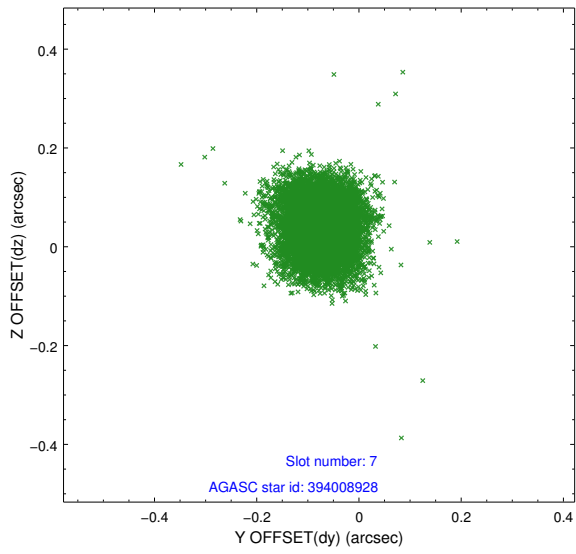
Time (s)



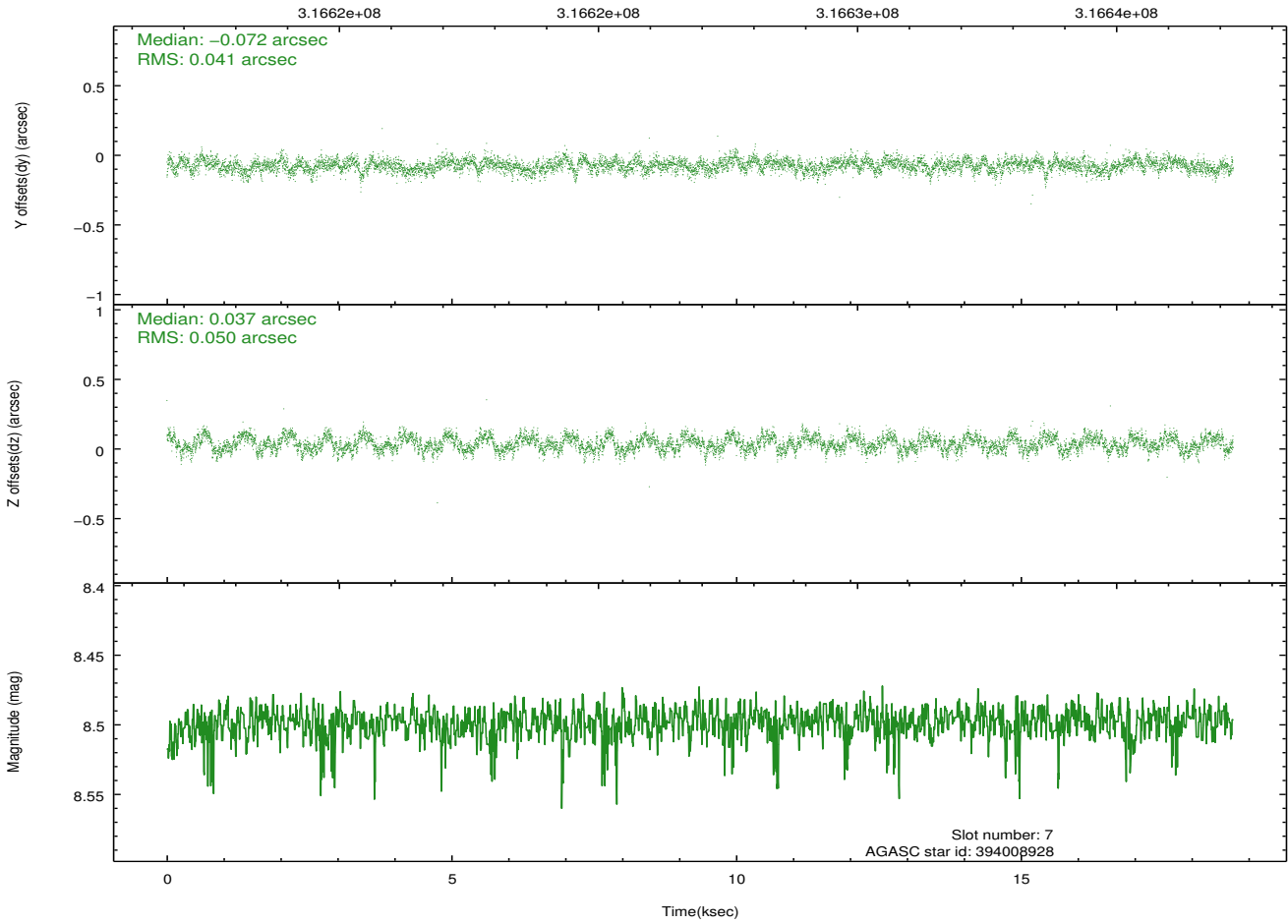
2.4.4 Slot 6



2.4.5 Slot 7

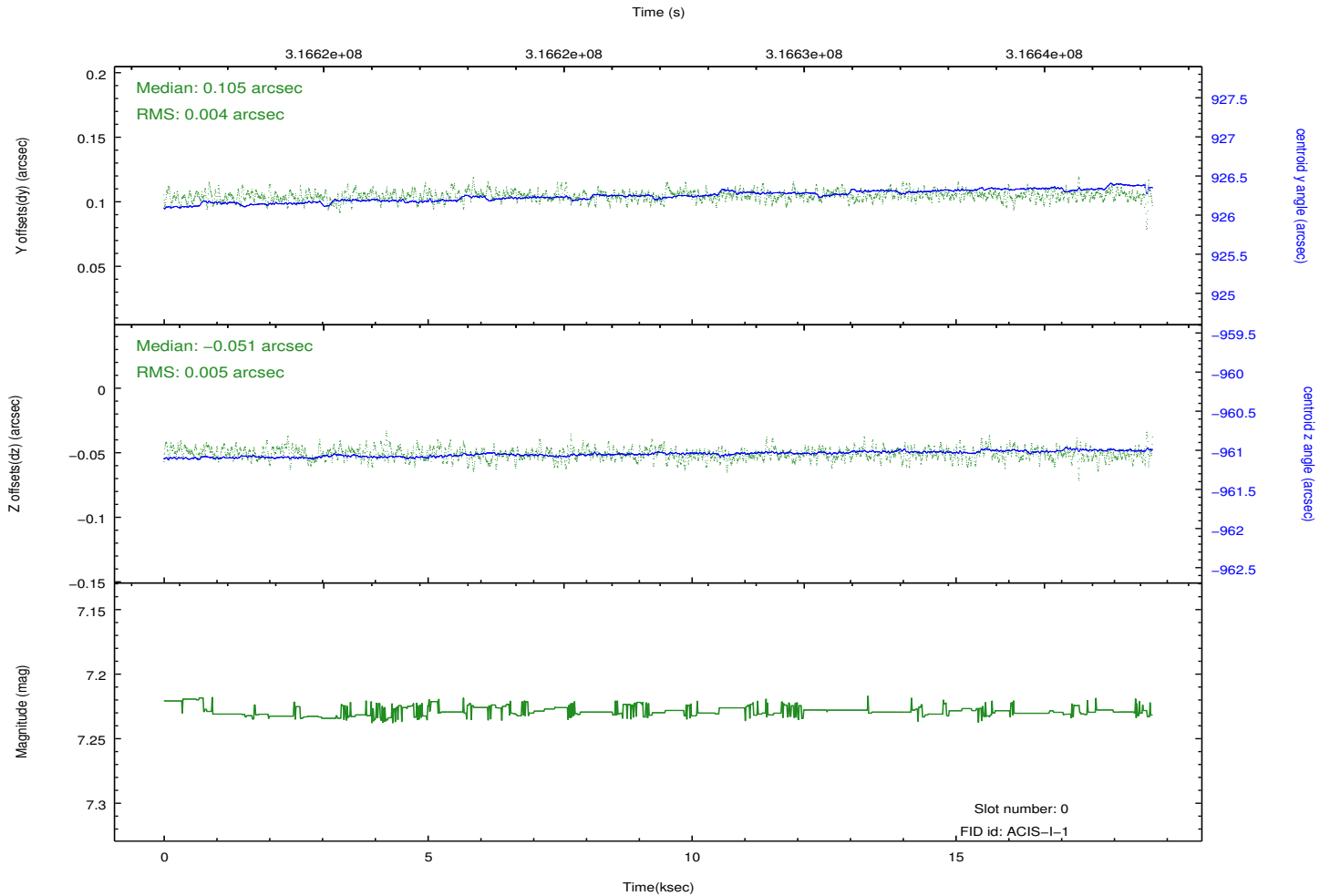
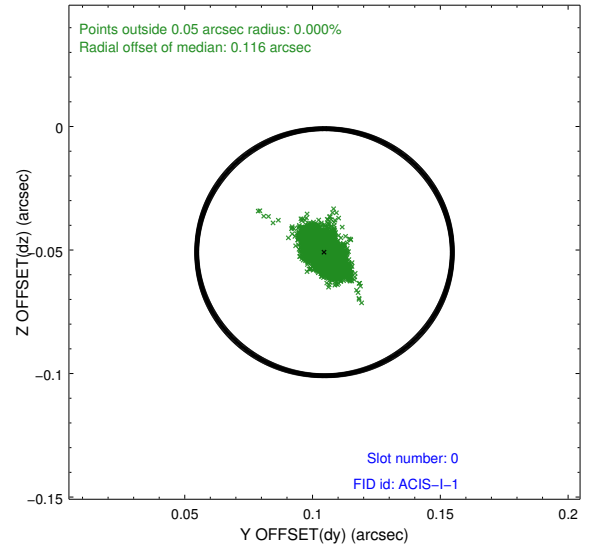
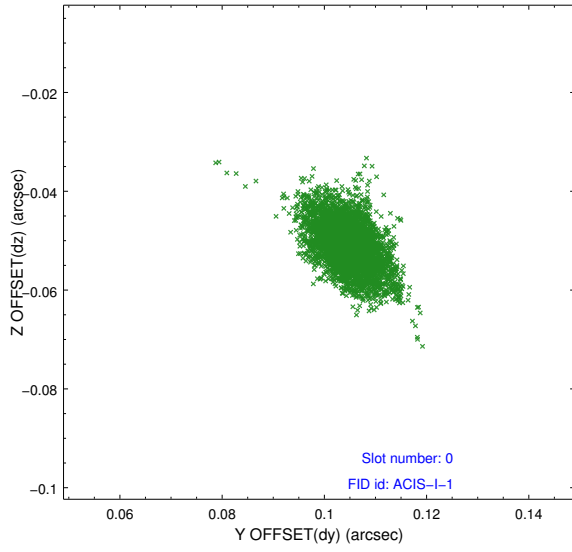


Time (s)

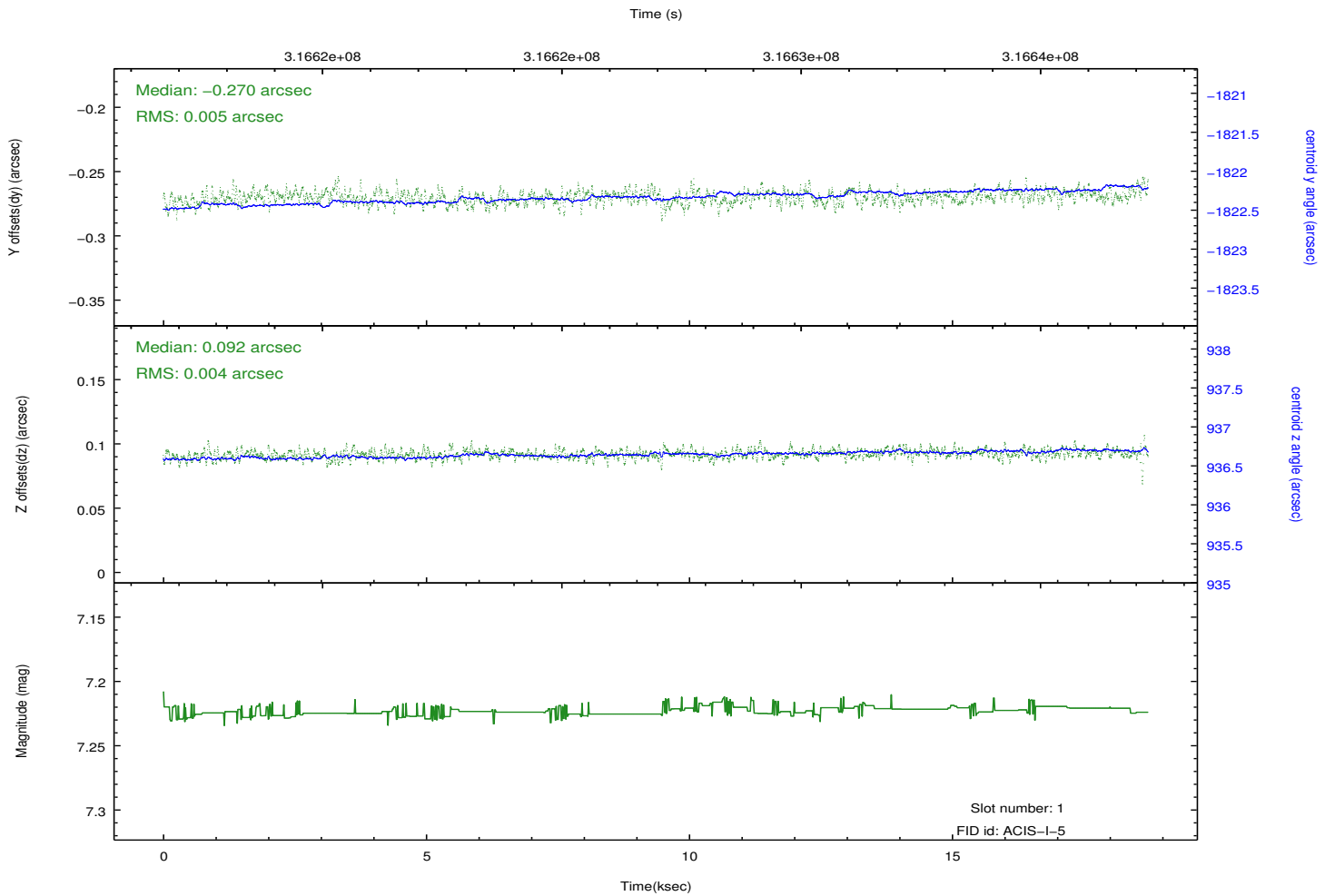
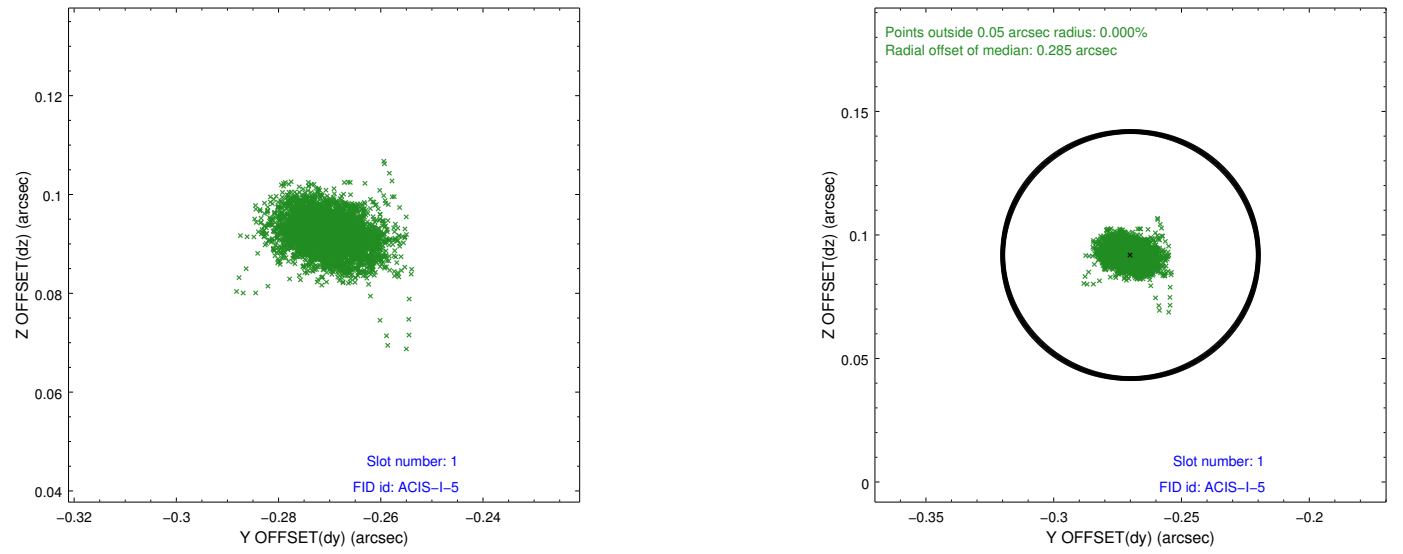


2.5 FID Slots

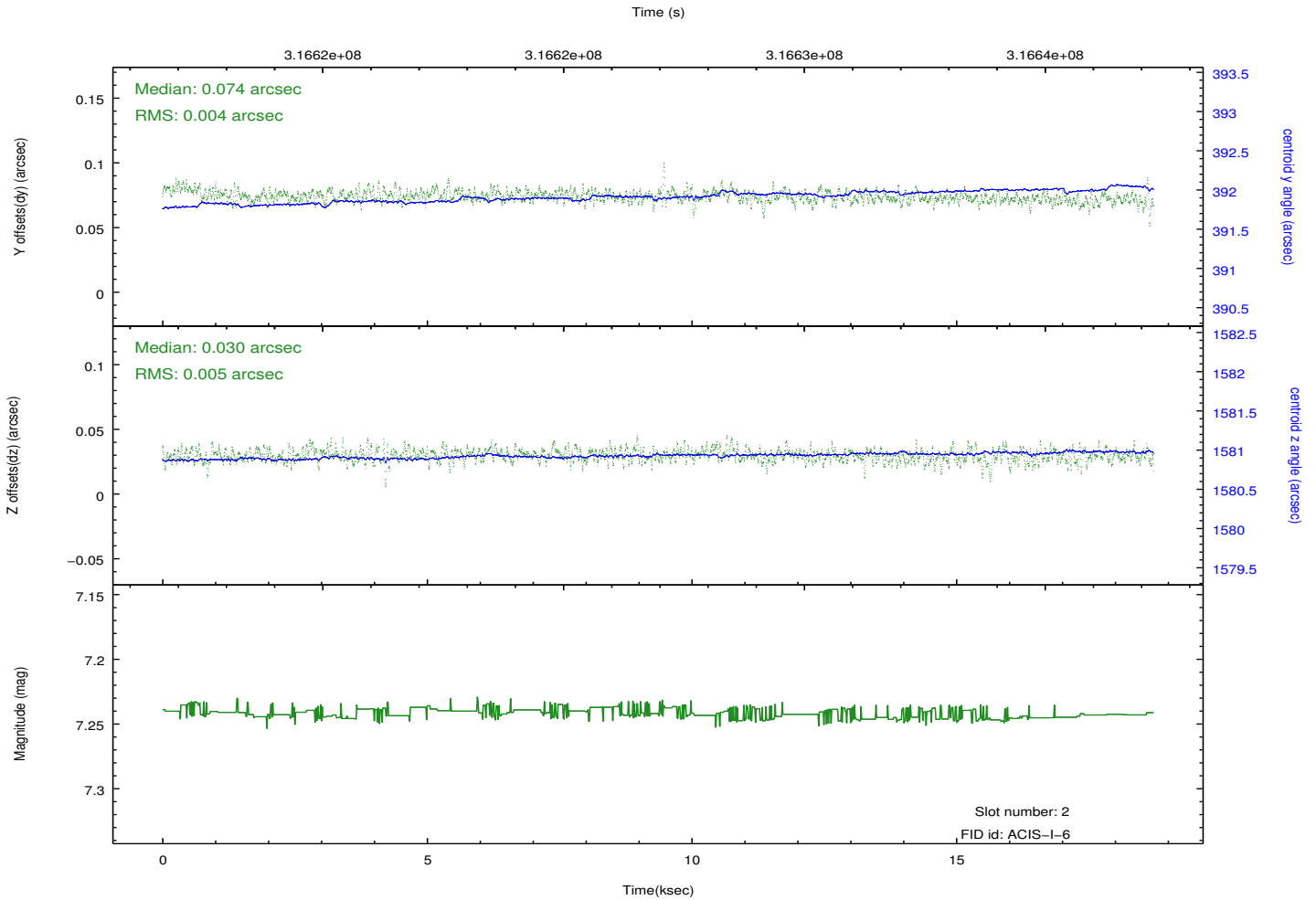
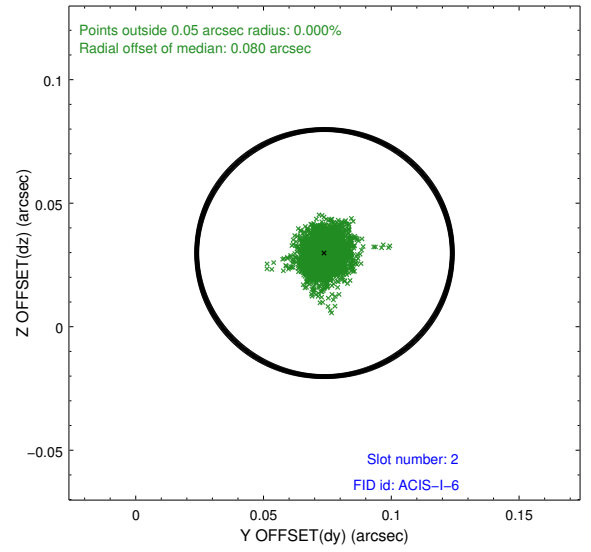
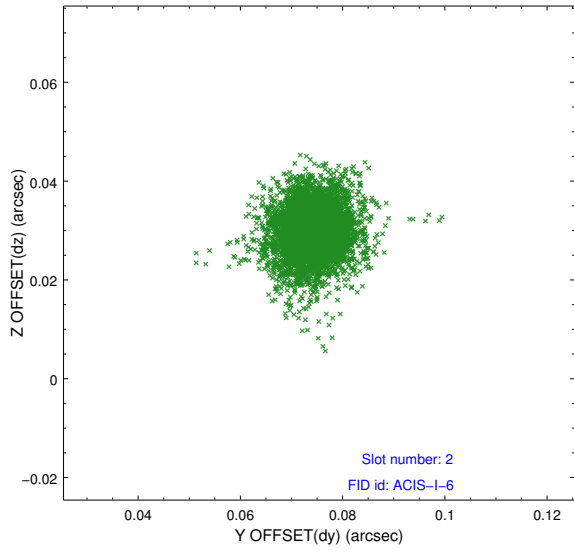
2.5.1 Slot 0



2.5.2 Slot 1



2.5.3 Slot 2



A Summary

A.1 Status

V&V Scientist	Jen Lauer
V&V Date (YYYY-MM-DD)	2012.05.10
V&V Edition	1
V&V Disposition and Status	OK
V&V Charge Time	18.7240001

A.2 Comments