

V&V Reference Report

L2 ASCDS Version : 8.4.4

Observation 9511 - L2 Version 2
Chandra X-Ray Center

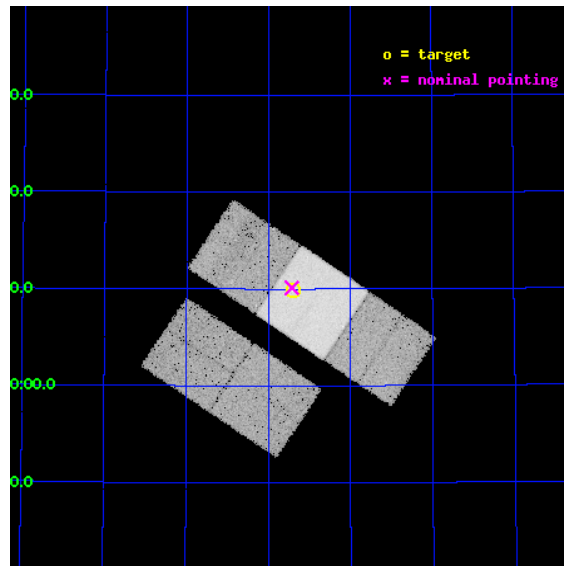
L2 Processing Date : May 5 2012

Contents

| | | |
|----------|-------------------------------|-----------|
| 1 | Front | 2 |
| 2 | OBI | 3 |
| 2.1 | OBI | 3 |
| 2.1.1 | Images | 3 |
| 2.1.2 | Bias | 3 |
| 2.1.3 | Parameters | 4 |
| 2.1.4 | Events | 4 |
| 2.2 | Compared Parameters | 5 |
| 2.3 | Aspect | 6 |
| 2.4 | Star Slots | 9 |
| 2.4.1 | Slot 3 | 9 |
| 2.4.2 | Slot 4 | 10 |
| 2.4.3 | Slot 5 | 11 |
| 2.4.4 | Slot 6 | 12 |
| 2.4.5 | Slot 7 | 13 |
| 2.5 | FID Slots | 14 |
| 2.5.1 | Slot 0 | 14 |
| 2.5.2 | Slot 1 | 15 |
| 2.5.3 | Slot 2 | 16 |
| A | Summary | 17 |
| A.1 | Status | 17 |
| A.2 | Comments | 17 |

1 Front

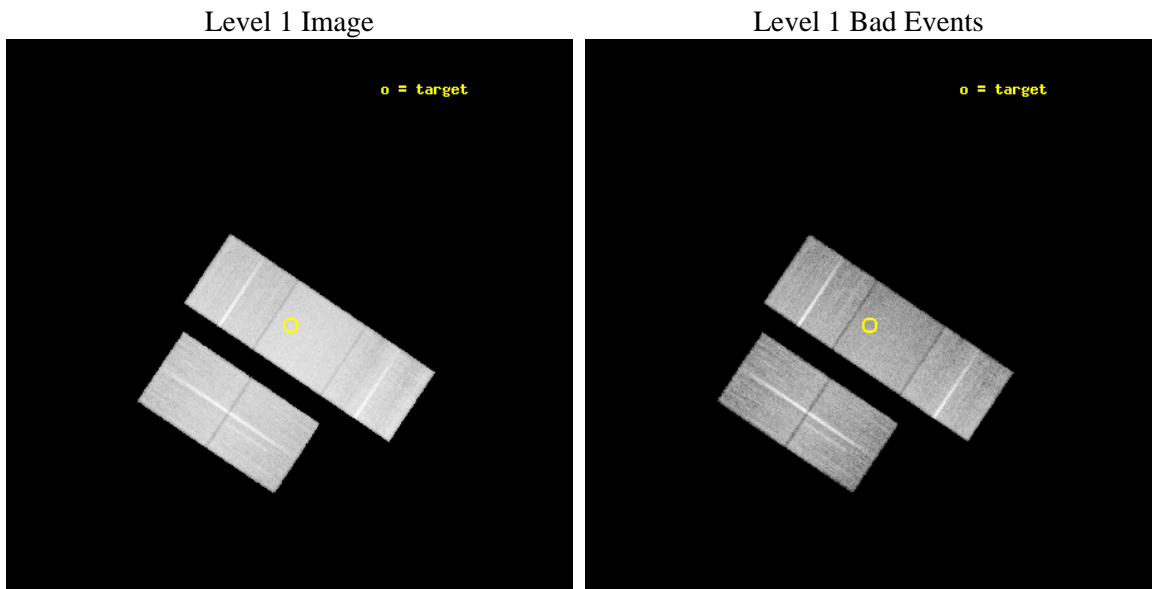
| | | |
|----------|---|---|
| seq_num | 600652 | Sequence number |
| obs_id | 9511 | Observation id |
| title | DUST DISKS AND THE EVOLUTION OF S0 GALAXIES | Proposal title |
| observer | Dr. Raymond White | Principal investigator |
| object | NGC 5422 | Source name |
| dtcycle | 0 | |
| cycle | P | events from which exps? Prim/Second/Both |
| ra_targ | 210.175 | Observer's specified target RA [deg] |
| dec_targ | 55.164444 | Observer's specified target Dec [deg] |
| ra_nom | 210.17849922093 | Nominal RA [deg] |
| dec_nom | 55.168856390039 | Nominal Dec [deg] |
| roll_nom | 33.823782490271 | Nominal Roll [deg] |
| revision | 2 | Processing version of data |
| ontime | 18153.600139618 | Sum of GTIs [s] |
| livetime | 17916.409989308 | Livetime [s] |
| ontime2 | 18150.459179342 | Sum of GTIs [s] |
| ontime3 | 18150.45929879 | Sum of GTIs [s] |
| ontime6 | 18150.459159315 | Sum of GTIs [s] |
| ontime7 | 18153.600139618 | Sum of GTIs [s] |
| ontime8 | 18153.600139618 | Sum of GTIs [s] |
| l2events | 176259 | Number of level 2 events |



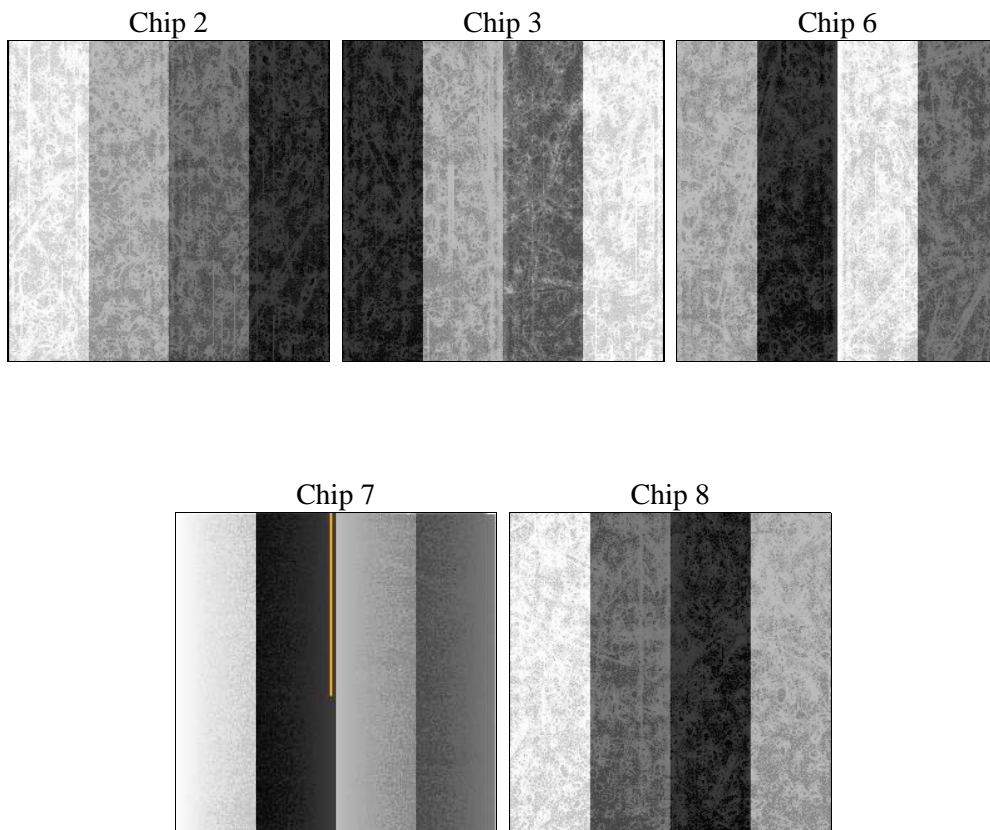
2 OBI

2.1 OBI

2.1.1 Images



2.1.2 Bias



2.1.3 Parameters

| | | | | | |
|----------|---------------------|--------------------------------|----------------|-----------------|---|
| obi_num | 0 | Obi number | sched_exp_time | 18000.000000 | [s] Scheduled observation exposure time |
| ascdsver | 8.4.4 | Processing system revision | ontime | 18153.600139618 | Sum of GTIs [s] |
| caldbver | 4.4.9 | | ontime2 | 18150.459179342 | Sum of GTIs [s] |
| date | 2012-05-05T21:00:08 | Date and time of file creation | ontime3 | 18150.45929879 | Sum of GTIs [s] |
| revision | 2 | Processing version of data | ontime6 | 18150.459159315 | Sum of GTIs [s] |
| | | | ontime7 | 18153.600139618 | Sum of GTIs [s] |
| | | | ontime8 | 18153.600139618 | Sum of GTIs [s] |
| | | | l1events | 1008740 | Number of level 1 events |

2.1.4 Events

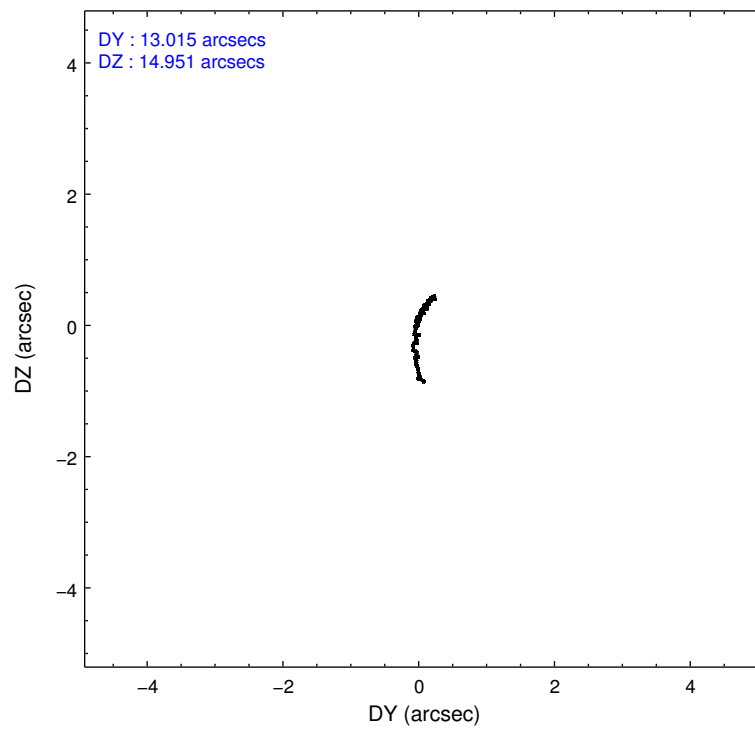
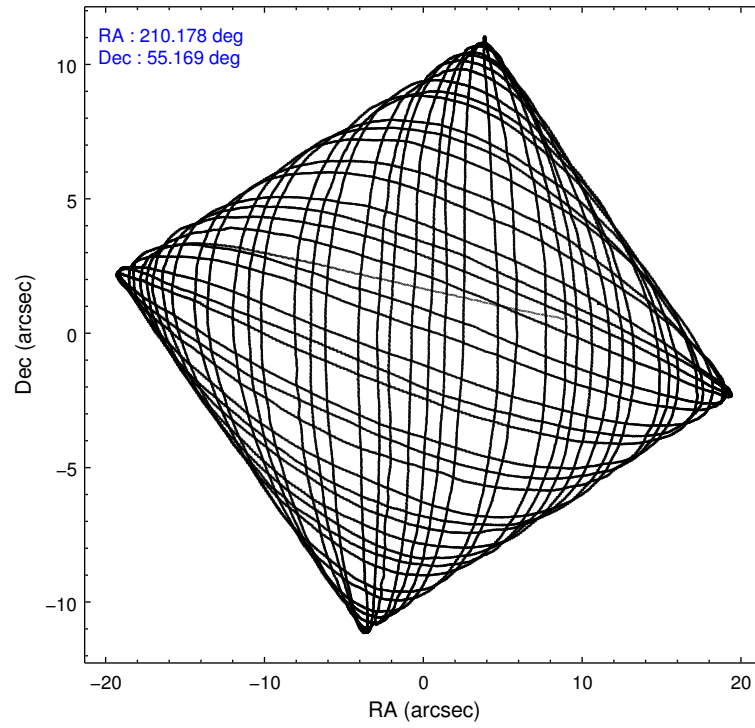
| | ccd 2 | ccd 3 | ccd 6 | ccd 7 | ccd 8 |
|-----------------|--------|--------|--------|--------|--------|
| level 1 events | 176610 | 173441 | 181712 | 246380 | 230597 |
| rejected events | 155771 | 152951 | 160012 | 144281 | 179366 |
| rejected % | 88% | 88% | 88% | 58% | 77% |

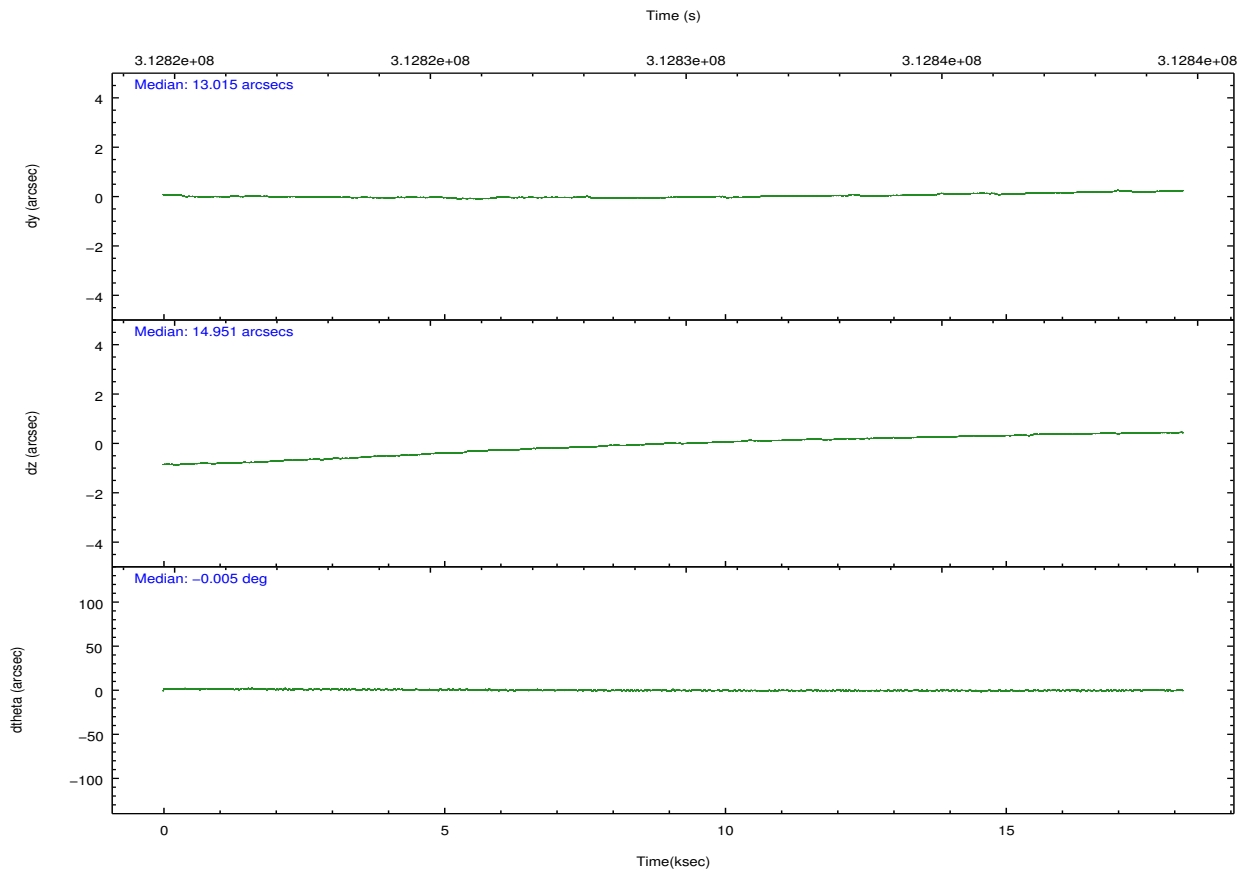
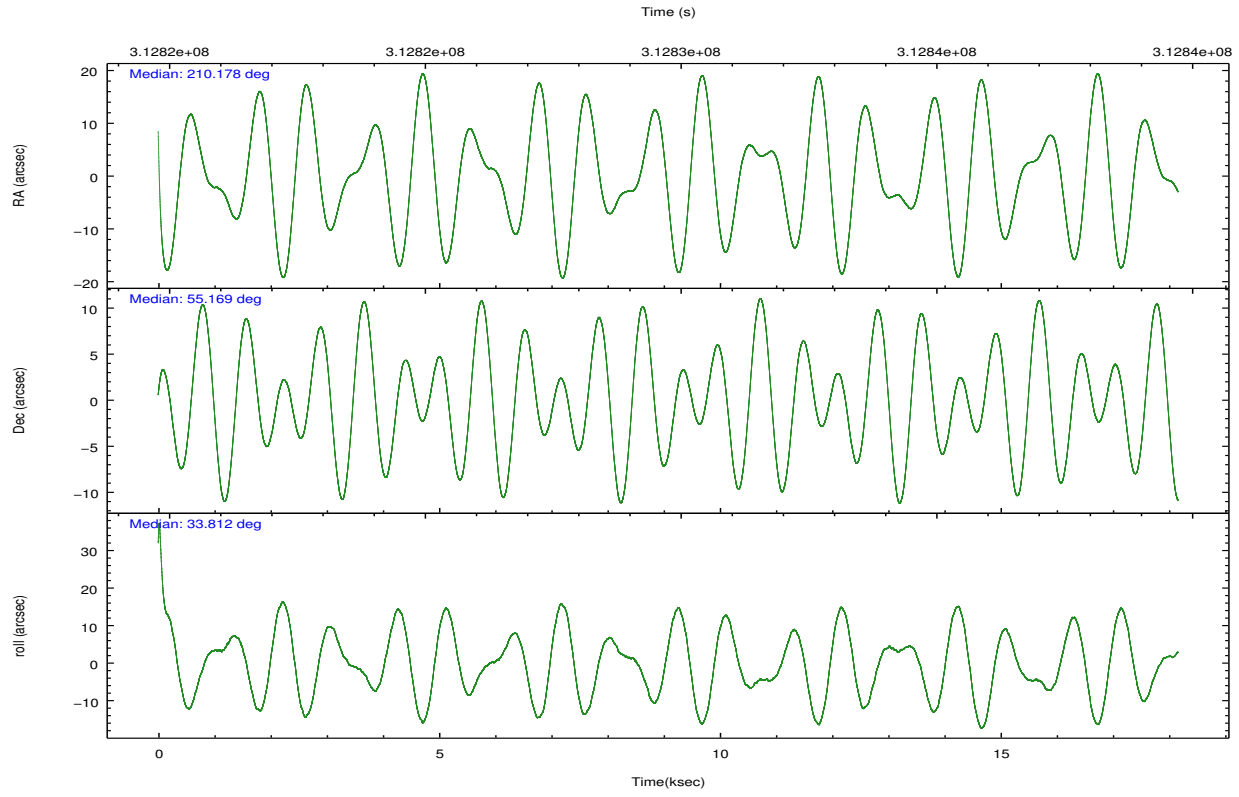
| | ccd 2 | ccd 3 | ccd 6 | ccd 7 | ccd 8 |
|----------------|--------|--------|--------|--------|--------|
| grade 0 events | 9085 | 8992 | 8490 | 8901 | 15749 |
| | 5% | 5% | 4% | 3% | 6% |
| grade 1 events | 113 | 111 | 104 | 226 | 174 |
| | 0% | 0% | 0% | 0% | 0% |
| grade 2 events | 4423 | 4054 | 4885 | 20818 | 11920 |
| | 2% | 2% | 2% | 8% | 5% |
| grade 3 events | 1905 | 2024 | 2071 | 8714 | 5366 |
| | 1% | 1% | 1% | 3% | 2% |
| grade 4 events | 1967 | 1899 | 1897 | 8596 | 4905 |
| | 1% | 1% | 1% | 3% | 2% |
| grade 5 events | 6861 | 8247 | 8509 | 23277 | 11645 |
| | 3% | 4% | 4% | 9% | 5% |
| grade 6 events | 3553 | 3635 | 4479 | 55639 | 13622 |
| | 2% | 2% | 2% | 22% | 5% |
| grade 7 events | 148703 | 144479 | 151277 | 120209 | 167216 |
| | 84% | 83% | 83% | 48% | 72% |

2.2 Compared Parameters

| Parameter | Planned | Actual | Parameter | Planned | Actual |
|-----------------------------------|---------------------|----------------------|---------------------------------------|-----------|---------|
| Instrument | ACIS | ACIS | Obspar format version number | 7 | 7 |
| Detector | ACIS-23678 | ACIS-23678 | Obspar file type | PREDICTED | ACTUAL |
| Grating | NONE | NONE | Obspar update status | NONE | UPDATED |
| Data mode | VFAINT | VFAINT | CCD I0 on | N | N |
| Observation mode | POINTING | POINTING | CCD I1 on | N | N |
| [deg] Pointing RA | 210.158007 | 210.1784992209346 | CCD I2 on | O1 | Y |
| [deg] Pointing Dec | 55.144152 | 55.1688563900387 | CCD I3 on | O2 | Y |
| [deg] Pointing Roll | 33.683950 | 33.82378249027149 | CCD S0 on | N | N |
| [mm] SIM focus pos | -0.684267 | -0.6828225247311905 | CCD S1 on | N | N |
| [mm] SIM defocus | 0 | 0.001444936568705701 | CCD S2 on | O4 | Y |
| [mm] SIM translation stage pos | -190.132523 | -190.1400660498719 | CCD S3 on | Y | Y |
| [mm] SIM translation stage offset | 0 | 0.00754346686406393 | CCD S4 on | O3 | Y |
| [s] Observation start time (MET) | 312820818.184000 | 312819780.78418 | CCD S5 on | N | N |
| Observation start date | 2007-11-30T14:39:13 | 2007-11-30T14:23:00 | Number of optional ACIS chips dropped | 0 | 0 |
| [s] Observation end time (MET) | 312838818.184000 | 312839945.61016 | On-chip summing requested | N | N |
| Observation end date | 2007-11-30T19:39:13 | 2007-11-30T19:59:05 | Subarray requested | NONE | NONE |
| Read mode | TIMED | TIMED | Alternating exposures requested | N | N |
| | | | [s] Primary exposure time | 0.000000 | 3.1 |

2.3 Aspect



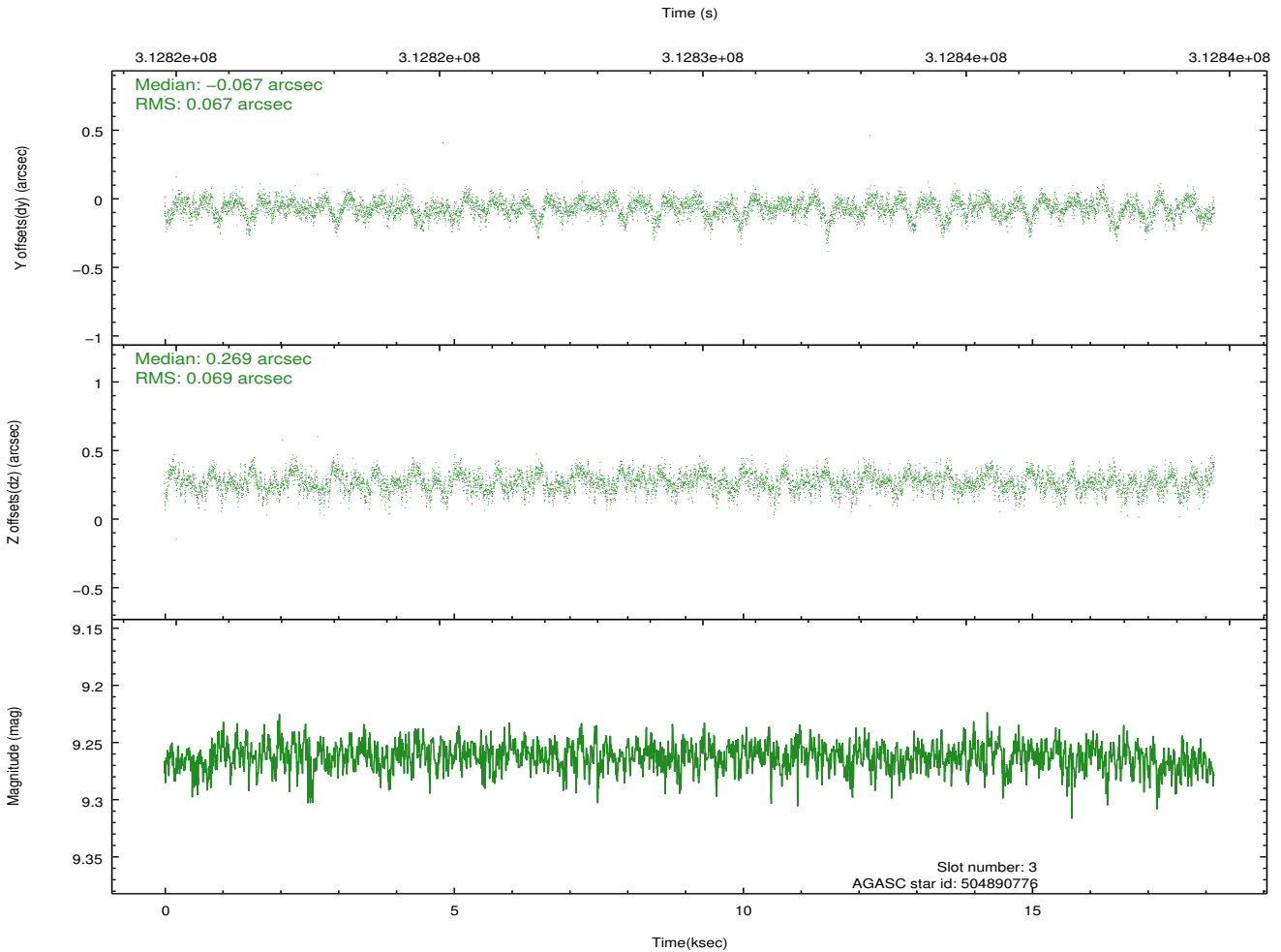
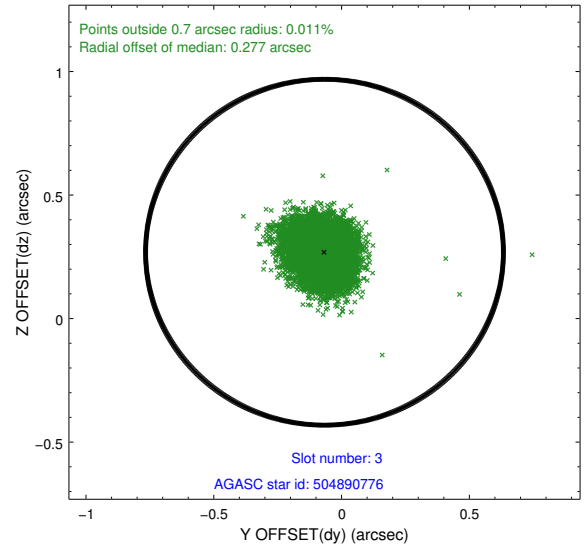
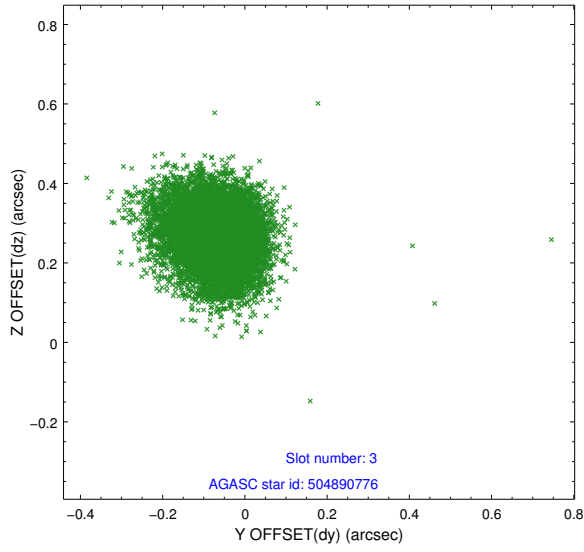


Slot Statistics

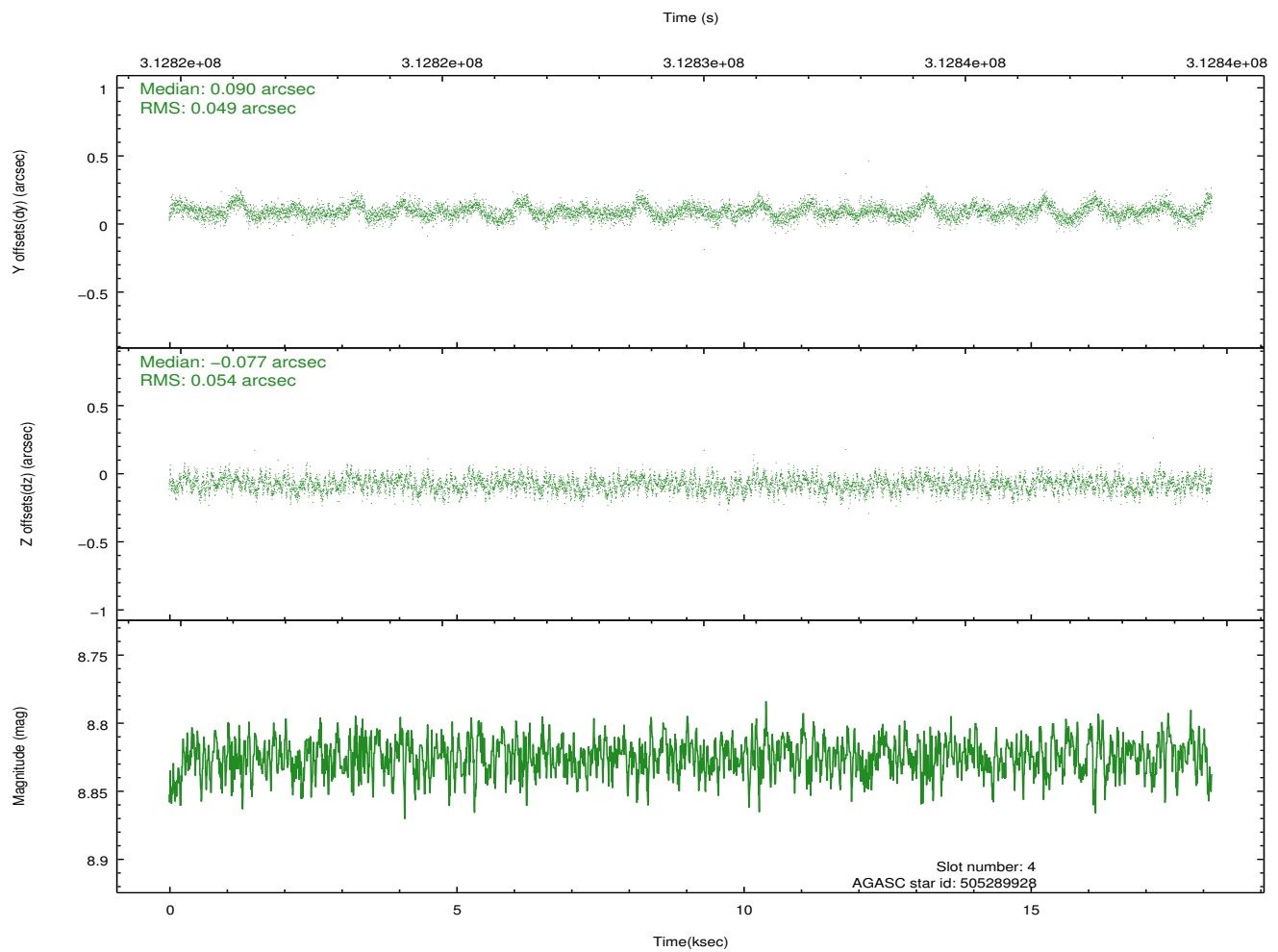
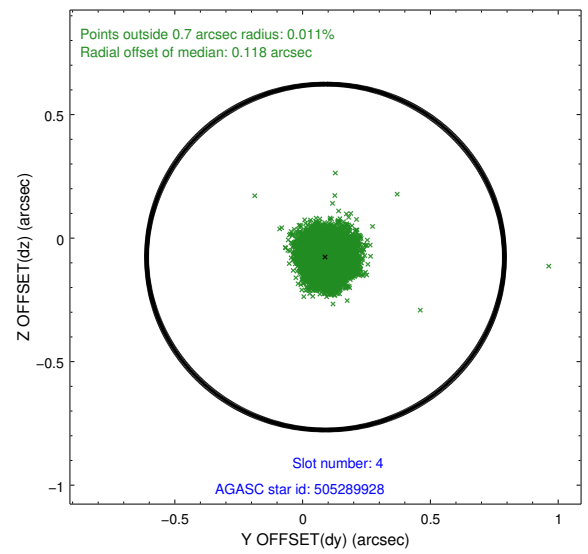
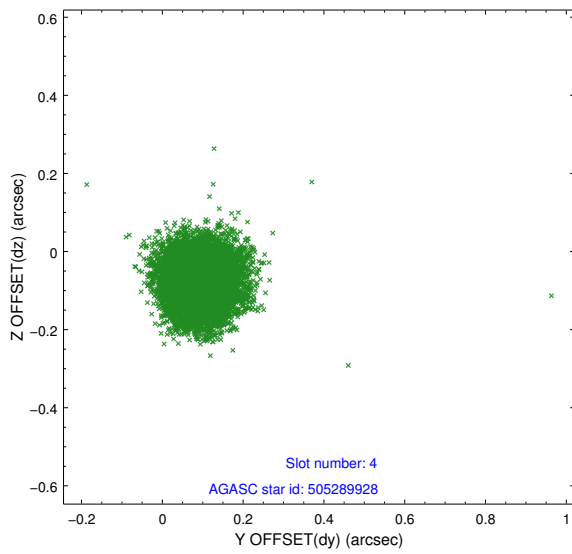
| slot | status | id | mag | n_pts | med_dy | med_dz | dr1 | dr2 | ra | dec | mean_y | mean_z |
|------|--------|-----------|------|-------|--------|--------|-------|-------|------------|-----------|----------|----------|
| 0 | FID | ACIS-S-2 | 7.09 | 4430 | -0.052 | -0.032 | 0.010 | 0.020 | 0.000000 | 0.000000 | -765.99 | -1736.27 |
| 1 | FID | ACIS-S-4 | 7.19 | 4430 | 0.175 | 0.034 | 0.007 | 0.013 | 0.000000 | 0.000000 | 2147.39 | 172.09 |
| 2 | FID | ACIS-S-5 | 7.22 | 4429 | -0.154 | 0.006 | 0.010 | 0.018 | 0.000000 | 0.000000 | -1818.67 | 165.93 |
| 3 | GUIDE | 504890776 | 9.26 | 8854 | -0.067 | 0.269 | 0.102 | 0.164 | 211.095934 | 54.816966 | 973.63 | -2047.94 |
| 4 | GUIDE | 505289928 | 8.82 | 8856 | 0.090 | -0.077 | 0.078 | 0.123 | 210.255792 | 55.424933 | 727.39 | 730.25 |
| 5 | GUIDE | 505289936 | 8.66 | 8852 | 0.040 | 0.036 | 0.074 | 0.119 | 211.265099 | 55.244504 | 2101.62 | -944.07 |
| 6 | GUIDE | 505291072 | 9.29 | 8846 | -0.289 | 0.098 | 0.088 | 0.142 | 210.560044 | 55.882003 | 2150.05 | 1762.36 |
| 7 | GUIDE | 505292496 | 8.95 | 8844 | 0.228 | -0.325 | 0.096 | 0.153 | 209.901938 | 55.817977 | 915.33 | 2306.48 |

2.4 Star Slots

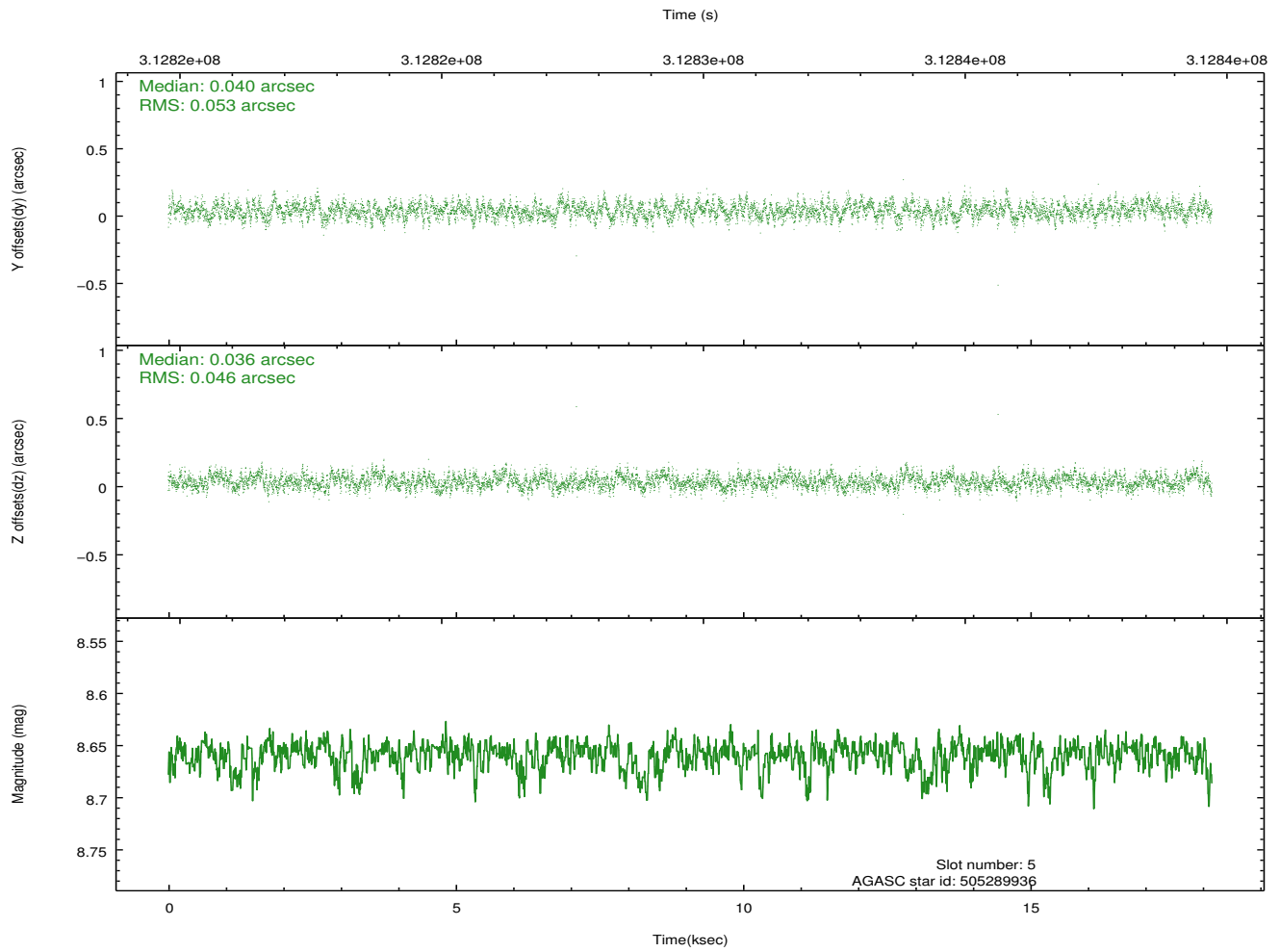
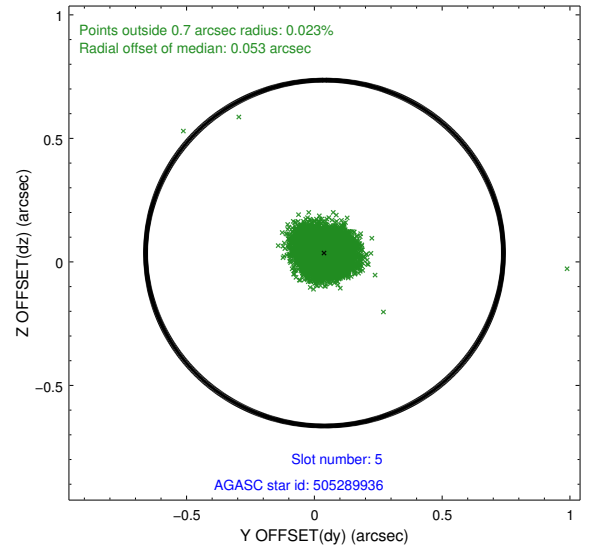
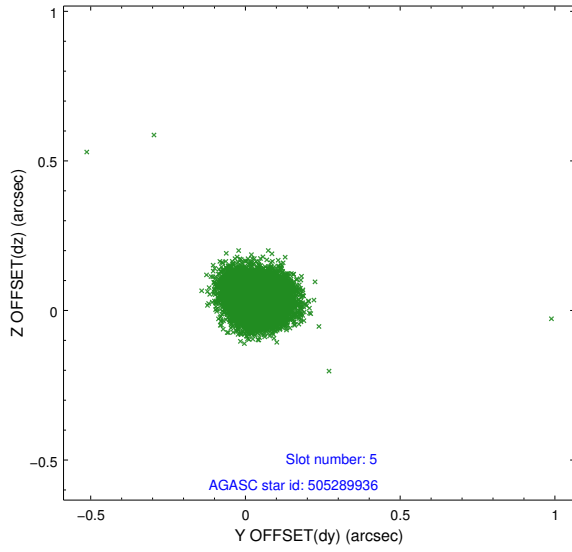
2.4.1 Slot 3



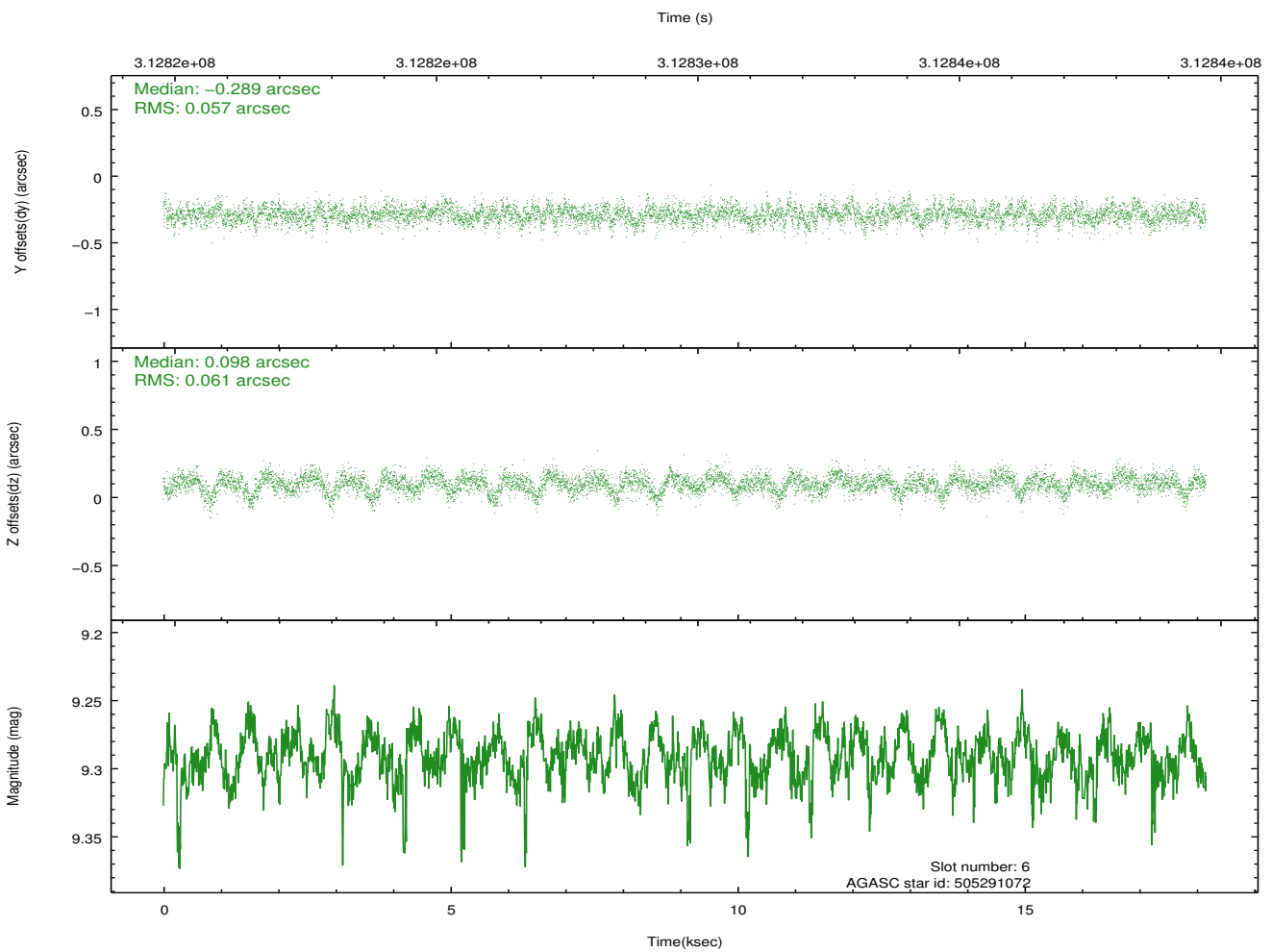
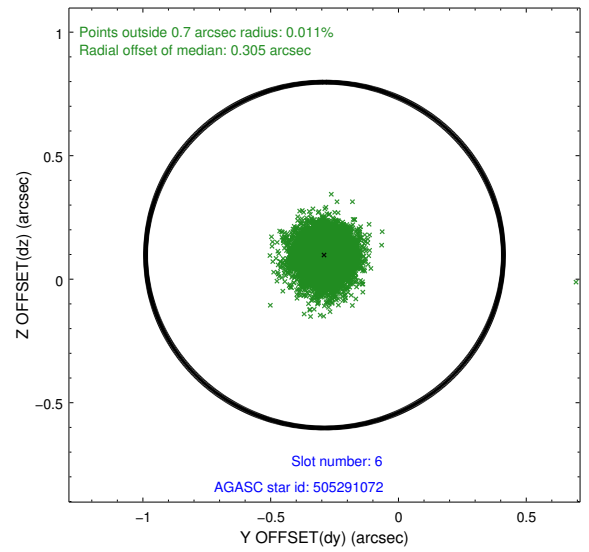
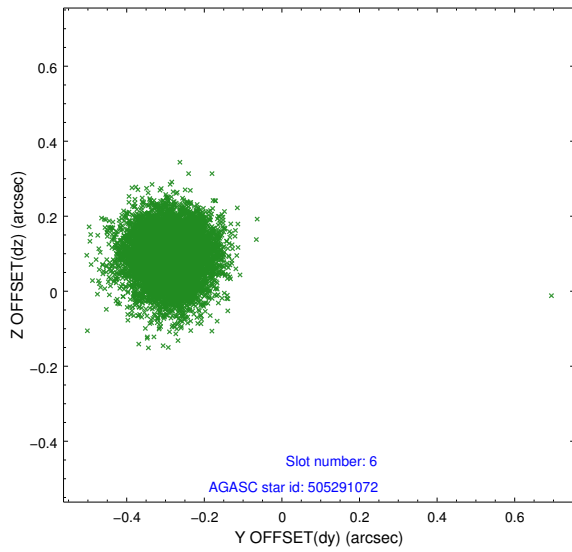
2.4.2 Slot 4



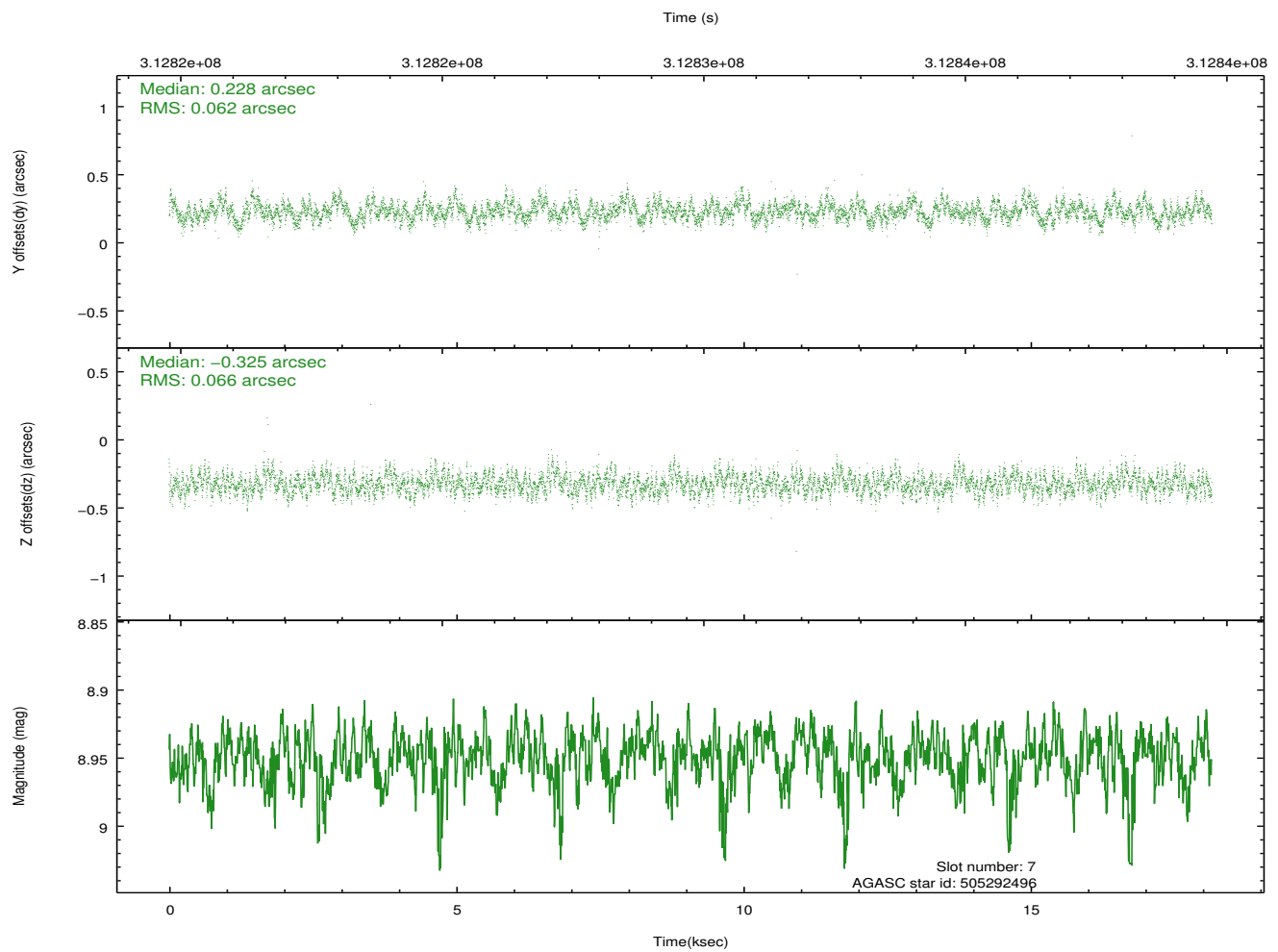
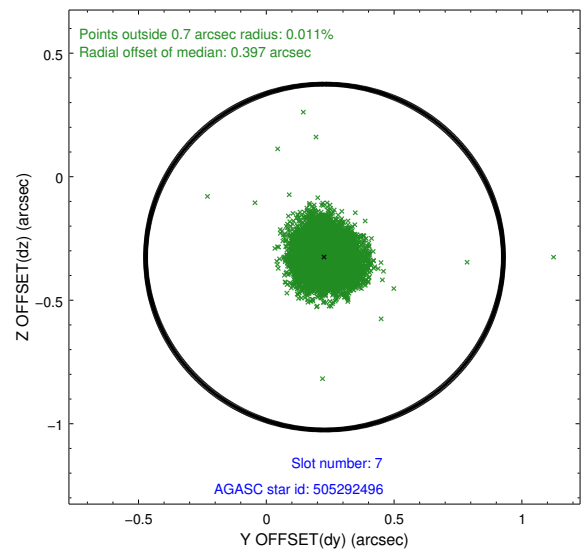
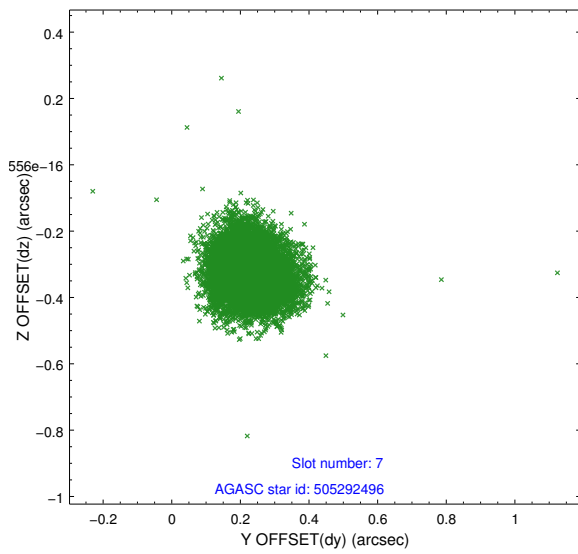
2.4.3 Slot 5



2.4.4 Slot 6

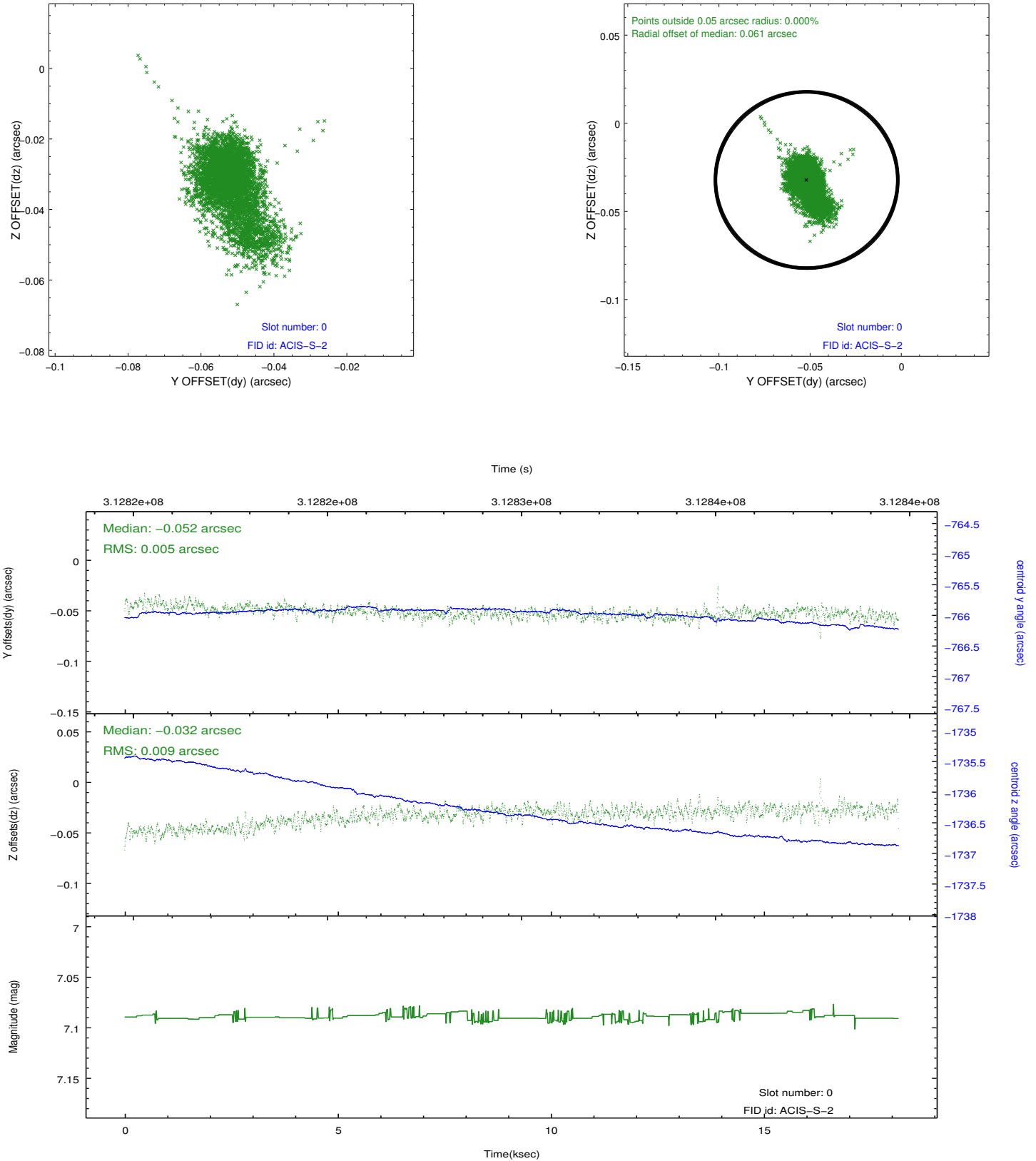


2.4.5 Slot 7

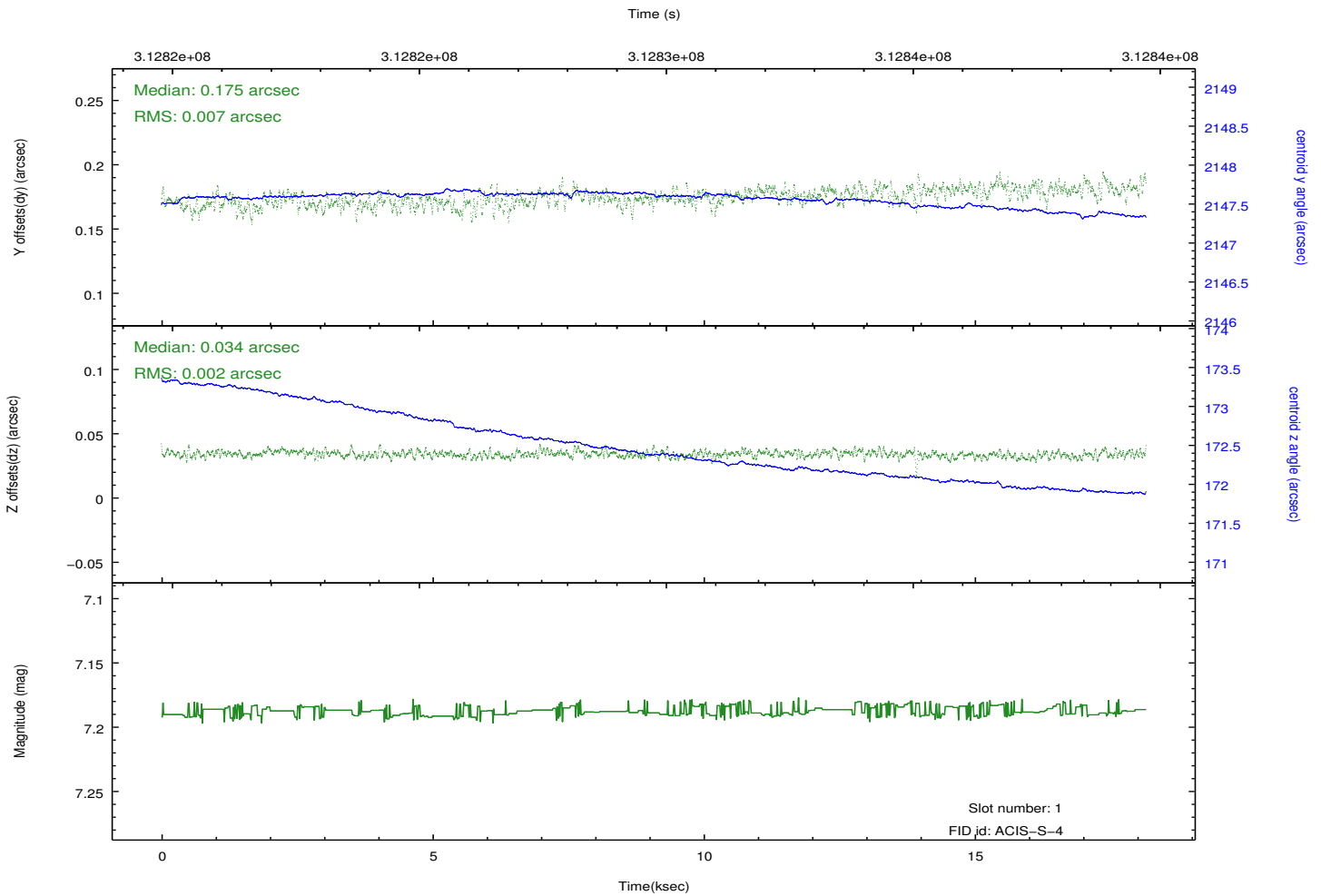
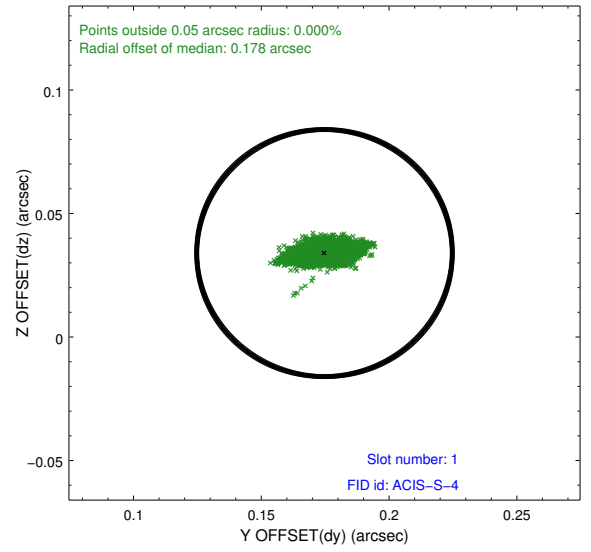
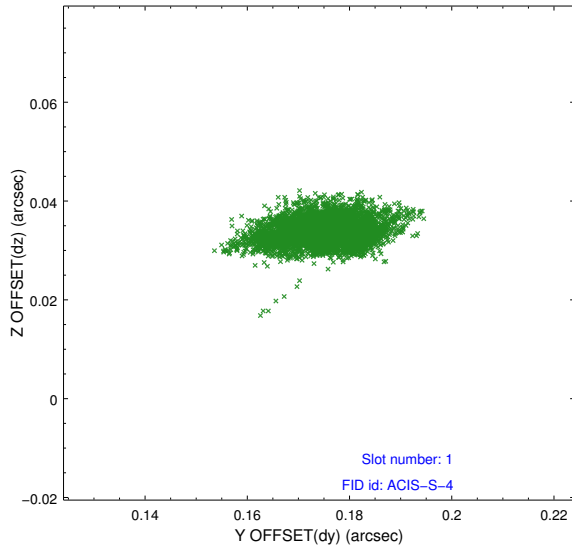


2.5 FID Slots

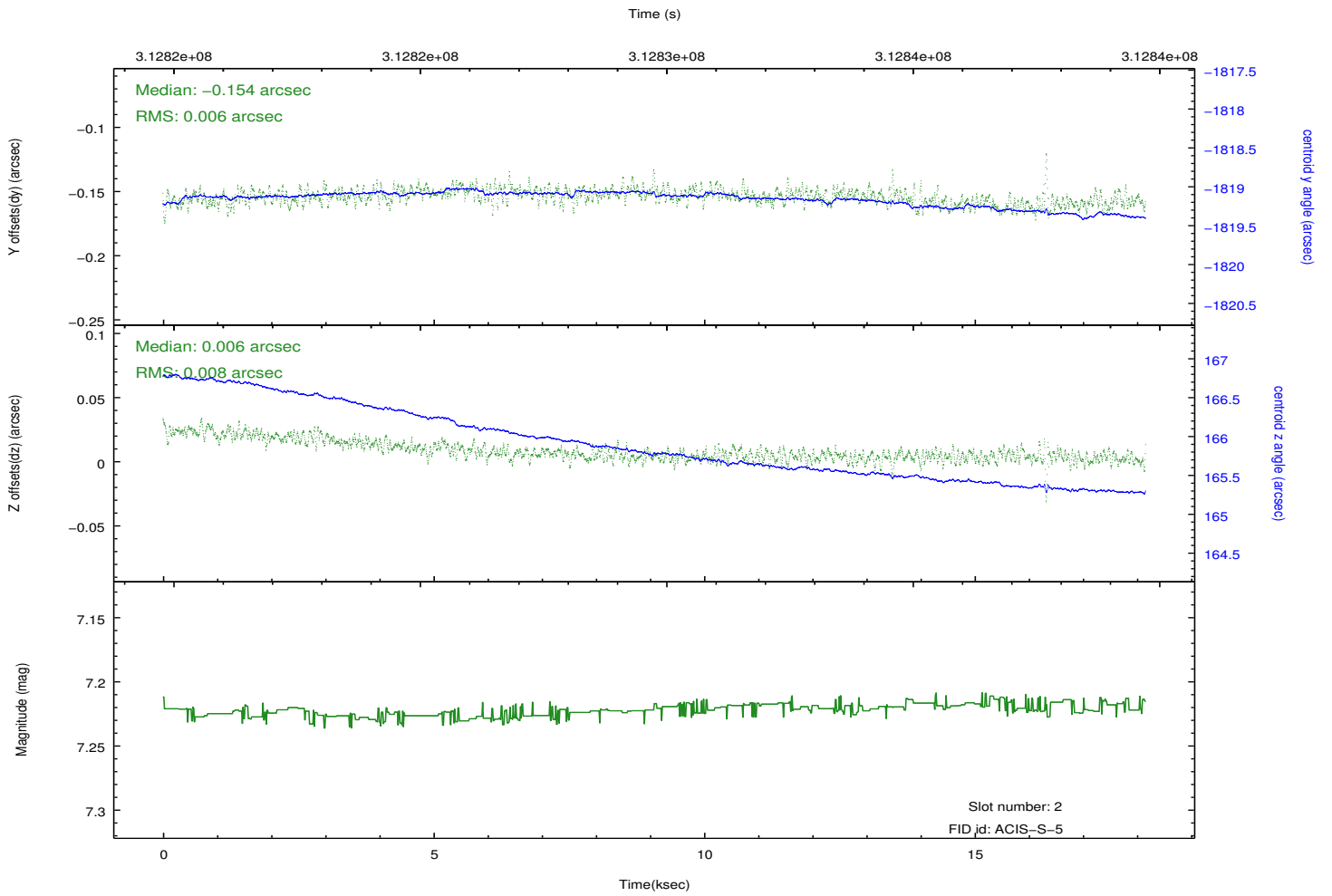
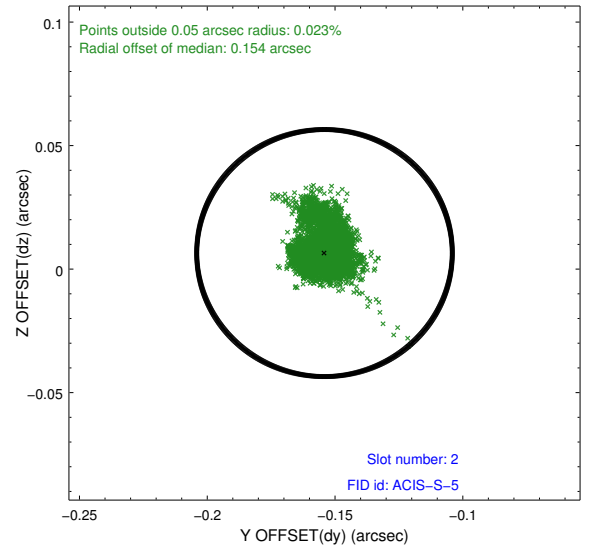
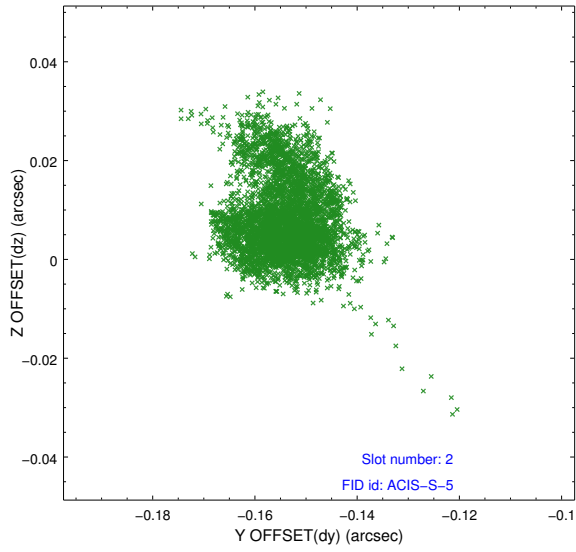
2.5.1 Slot 0



2.5.2 Slot 1



2.5.3 Slot 2



A Summary

A.1 Status

| | |
|----------------------------|------------|
| V&V Scientist | Jen Lauer |
| V&V Date (YYYY-MM-DD) | 2012.05.08 |
| V&V Edition | 1 |
| V&V Disposition and Status | OK |
| V&V Charge Time | 18.1536001 |

A.2 Comments