

V&V Reference Report

L2 ASCDS Version : 8.4.4

Observation 9801 - L2 Version 2
Chandra X-Ray Center

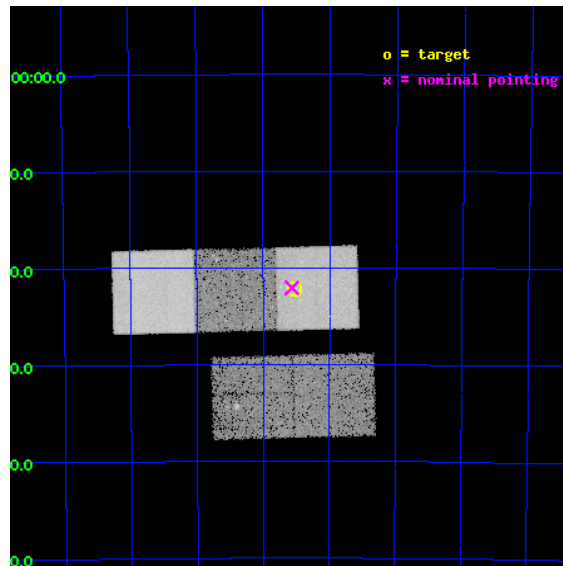
L2 Processing Date : May 6 2012

Contents

1	Front	2
2	OBI	3
2.1	OBI	3
2.1.1	Images	3
2.1.2	Bias	3
2.1.3	Parameters	4
2.1.4	Events	4
2.2	Compared Parameters	5
2.3	Aspect	6
2.4	Star Slots	9
2.4.1	Slot 3	9
2.4.2	Slot 4	10
2.4.3	Slot 5	11
2.4.4	Slot 6	12
2.4.5	Slot 7	13
2.5	FID Slots	14
2.5.1	Slot 0	14
2.5.2	Slot 1	15
2.5.3	Slot 2	16
A	Summary	17
A.1	Status	17
A.2	Comments	17

1 Front

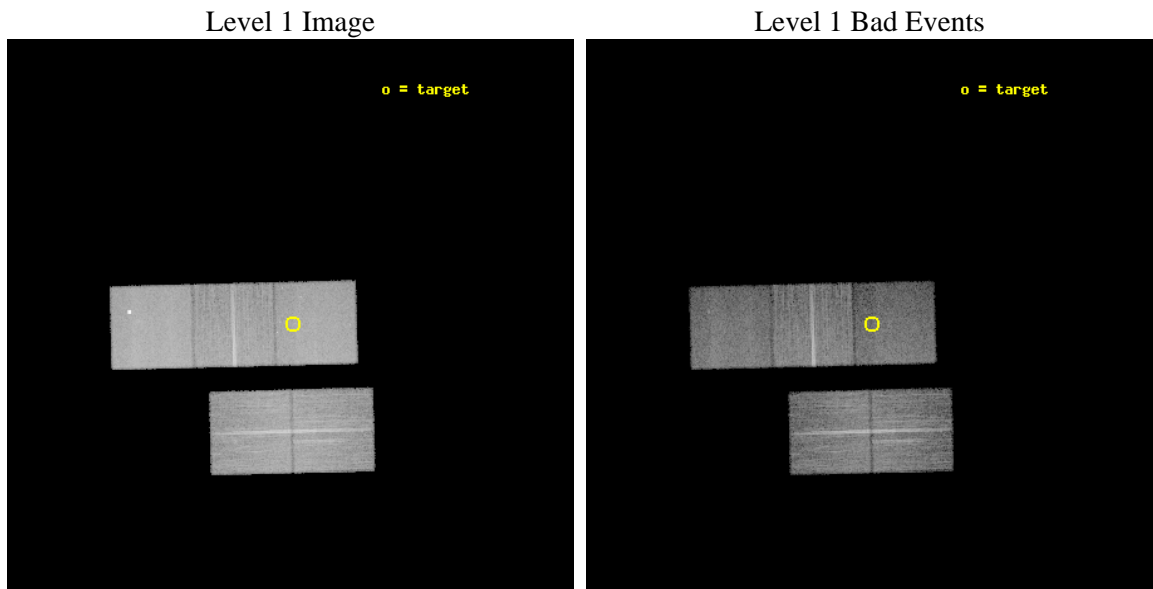
seq_num	500949	Sequence number
obs_id	9801	Observation id
title	The extreme late-time light curve of GRB 060729	Proposal title
observer	Dr. Dirk Grupe	Principal investigator
object	GRB 060729	Source name
dtcycle	0	
cycle	P	events from which exps? Prim/Second/Both
ra_targ	95.382917	Observer's specified target RA [deg]
dec_targ	-62.370139	Observer's specified target Dec [deg]
ra_nom	95.392002894107	Nominal RA [deg]
dec_nom	-62.367730393854	Nominal Dec [deg]
roll_nom	358.53007119905	Nominal Roll [deg]
revision	2	Processing version of data
ontime	15267.500117421	Sum of GTIs [s]
livetime	15068.018988617	Livetime [s]
ontime2	15258.077186644	Sum of GTIs [s]
ontime3	15267.500117421	Sum of GTIs [s]
ontime5	15267.500117421	Sum of GTIs [s]
ontime6	15267.500117421	Sum of GTIs [s]
ontime7	15267.500117421	Sum of GTIs [s]
l2events	186195	Number of level 2 events



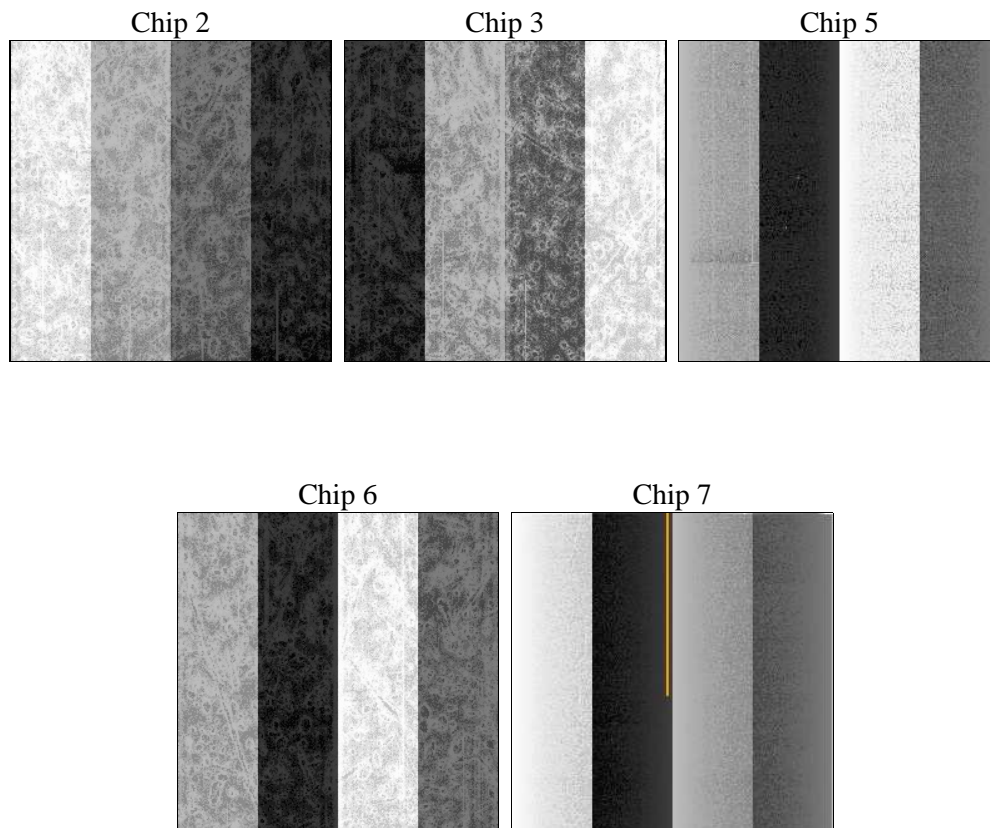
2 OBI

2.1 OBI

2.1.1 Images



2.1.2 Bias



2.1.3 Parameters

obi_num	0	Obi number	sched_exp_time	15136.649000	[s] Scheduled observation exposure time
ascdsver	8.4.4	Processing system revision	ontime	15267.500117421	Sum of GTIs [s]
caldbver	4.4.9	 	ontime2	15258.077186644	Sum of GTIs [s]
date	2012-05-06T16:02:30	Date and time of file creation	ontime3	15267.500117421	Sum of GTIs [s]
revision	2	Processing version of data	ontime5	15267.500117421	Sum of GTIs [s]
			ontime6	15267.500117421	Sum of GTIs [s]
			ontime7	15267.500117421	Sum of GTIs [s]
			l1events	729097	Number of level 1 events

2.1.4 Events

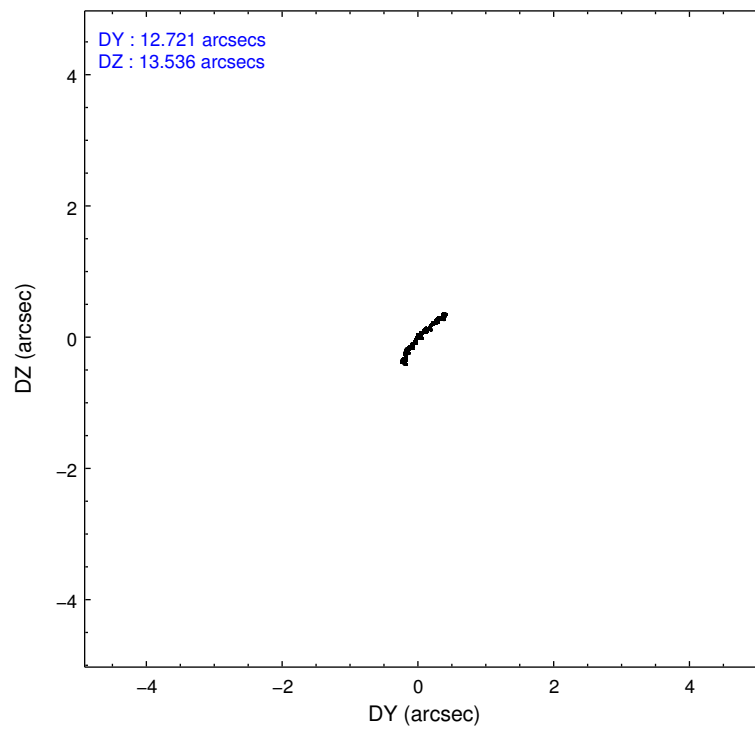
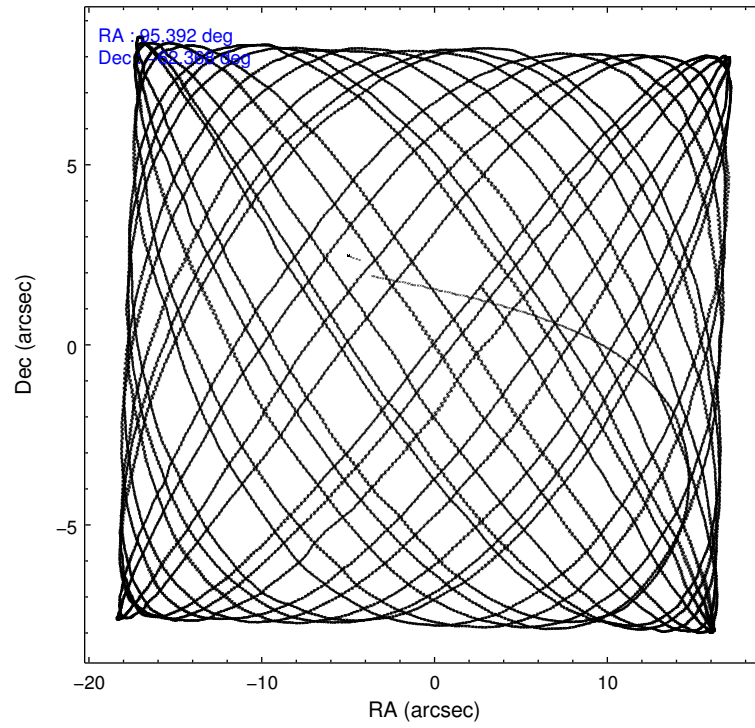
	ccd 2	ccd 3	ccd 5	ccd 6	ccd 7
level 1 events	134735	127642	181886	136543	148291
rejected events	120935	114651	92488	121286	80247
rejected %	89%	89%	50%	88%	54%

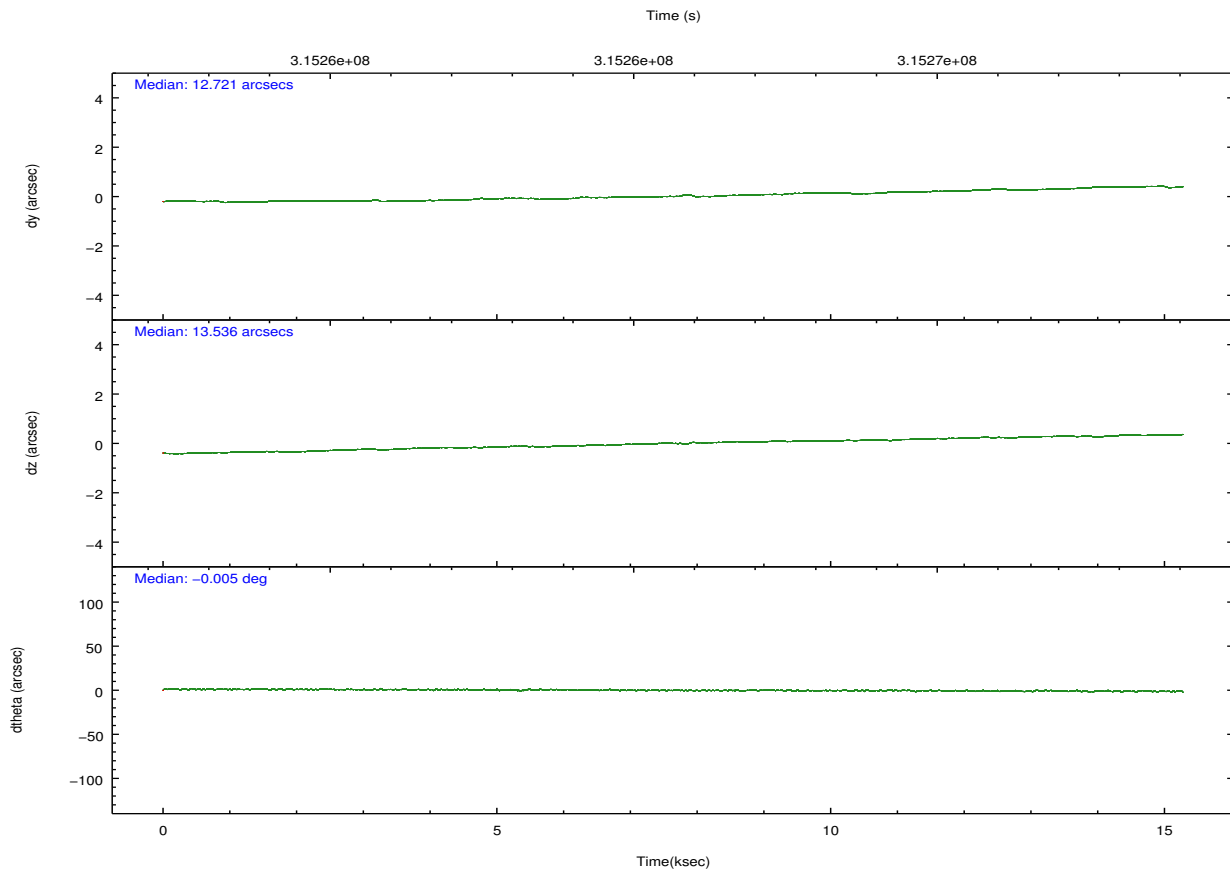
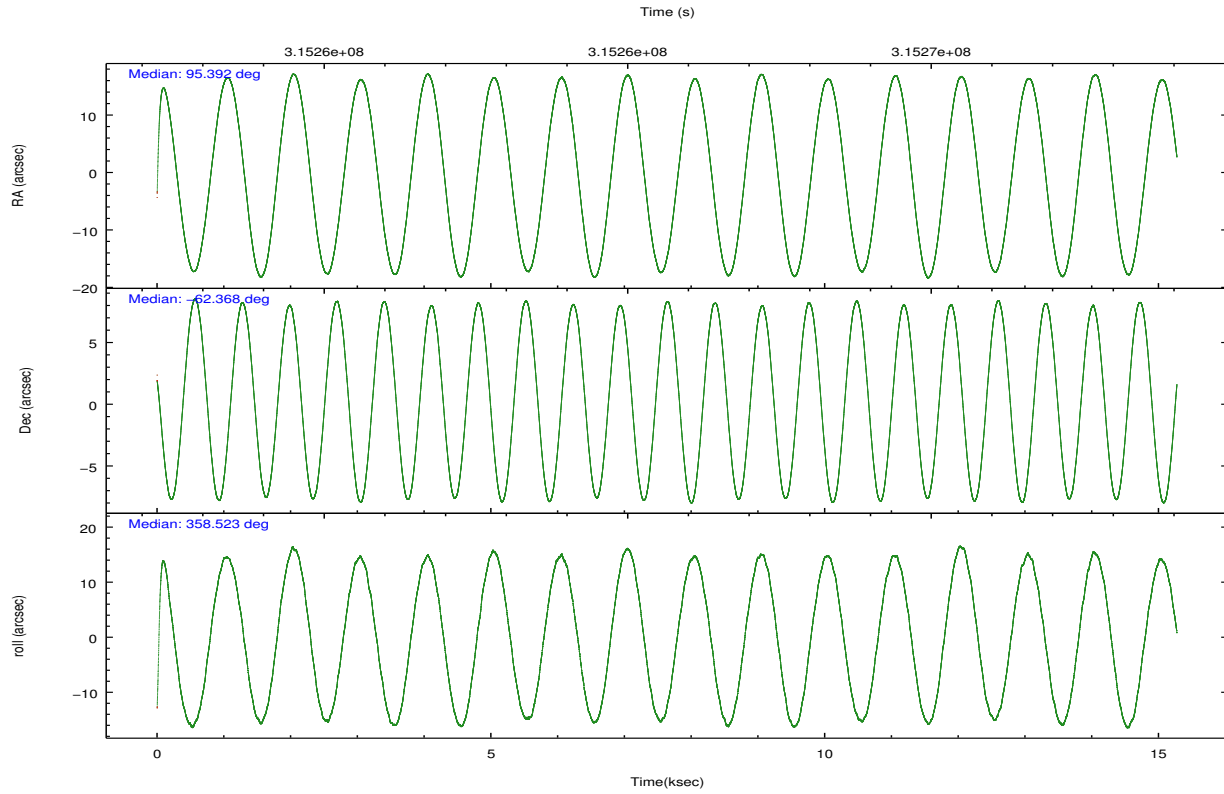
	ccd 2	ccd 3	ccd 5	ccd 6	ccd 7
grade 0 events	5683	5196	8119	6240	6503
	4%	4%	4%	4%	4%
grade 1 events	75	90	413	68	185
	0%	0%	0%	0%	0%
grade 2 events	3125	2730	28890	3226	13905
	2%	2%	15%	2%	9%
grade 3 events	1482	1443	3690	1548	6264
	1%	1%	2%	1%	4%
grade 4 events	1407	1377	3618	1538	6213
	1%	1%	1%	1%	4%
grade 5 events	4194	5099	13597	5146	15162
	3%	3%	7%	3%	10%
grade 6 events	2412	2557	47523	3048	36850
	1%	2%	26%	2%	24%
grade 7 events	116357	109150	76036	115729	63209
	86%	85%	41%	84%	42%

2.2 Compared Parameters

Parameter	Planned	Actual	Parameter	Planned	Actual
Instrument	ACIS	ACIS	Obspar format version number	7	7
Detector	ACIS-23567	ACIS-23567	Obspar file type	PREDICTED	ACTUAL
Grating	NONE	NONE	Obspar update status	NONE	UPDATED
Data mode	VFAINT	VFAINT	Number of optional ACIS chips dropped	0	0
Observation mode	POINTING	POINTING	On-chip summing requested	N	N
[deg] Pointing RA	95.340527	95.39200289410711	Subarray requested	NONE	NONE
[deg] Pointing Dec	-62.381073	-62.36773039385393	Alternating exposures requested	N	N
[deg] Pointing Roll	358.327845	358.5300711990466	[s] Primary exposure time	0.000000	3.1
[s] Window start time (MET)	312854465.184000	312854465.184000			
[s] Window stop time (MET)	320716865.184000	320716865.184000			
[mm] SIM focus pos	-0.684267	-0.6828225247311905			
[mm] SIM defocus	0	0.001444936568705701			
[mm] SIM translation stage pos	-190.132523	-190.1425803651734			
[mm] SIM translation stage offset	0	0.01005778216563158			
[s] Observation start time (MET)	315258157.184000	315256976.70203			
Observation start date	2007-12-28T19:41:32	2007-12-28T19:22:56			
[s] Observation end time (MET)	315273293.184000	315273519.17783			
Observation end date	2007-12-28T23:53:48	2007-12-28T23:58:39			
Read mode	TIMED	TIMED			

2.3 Aspect



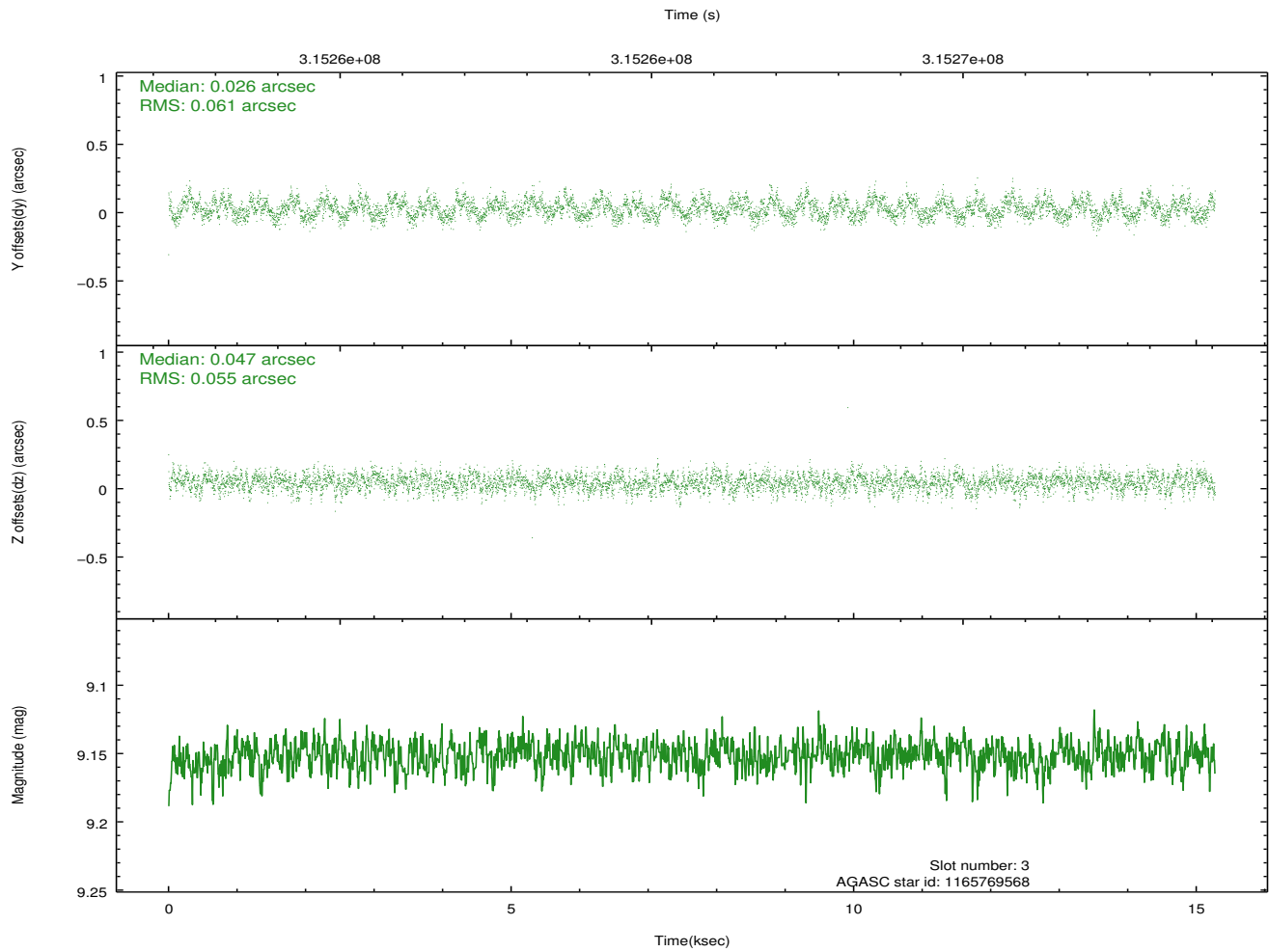
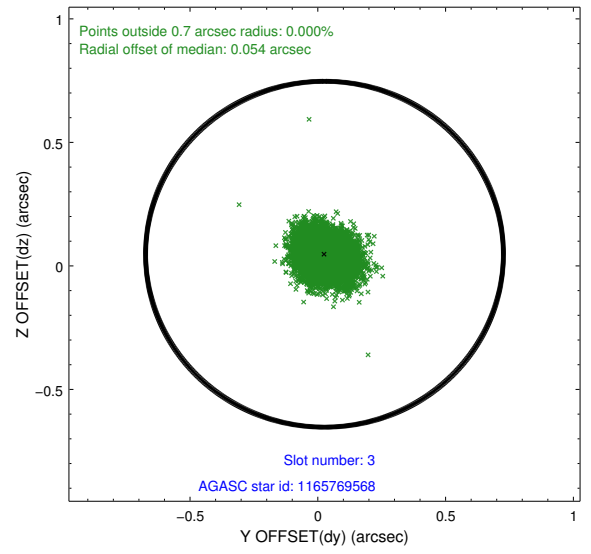
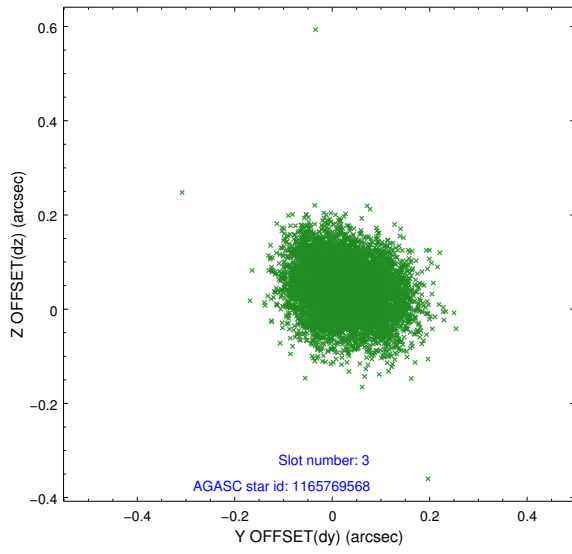


Slot Statistics

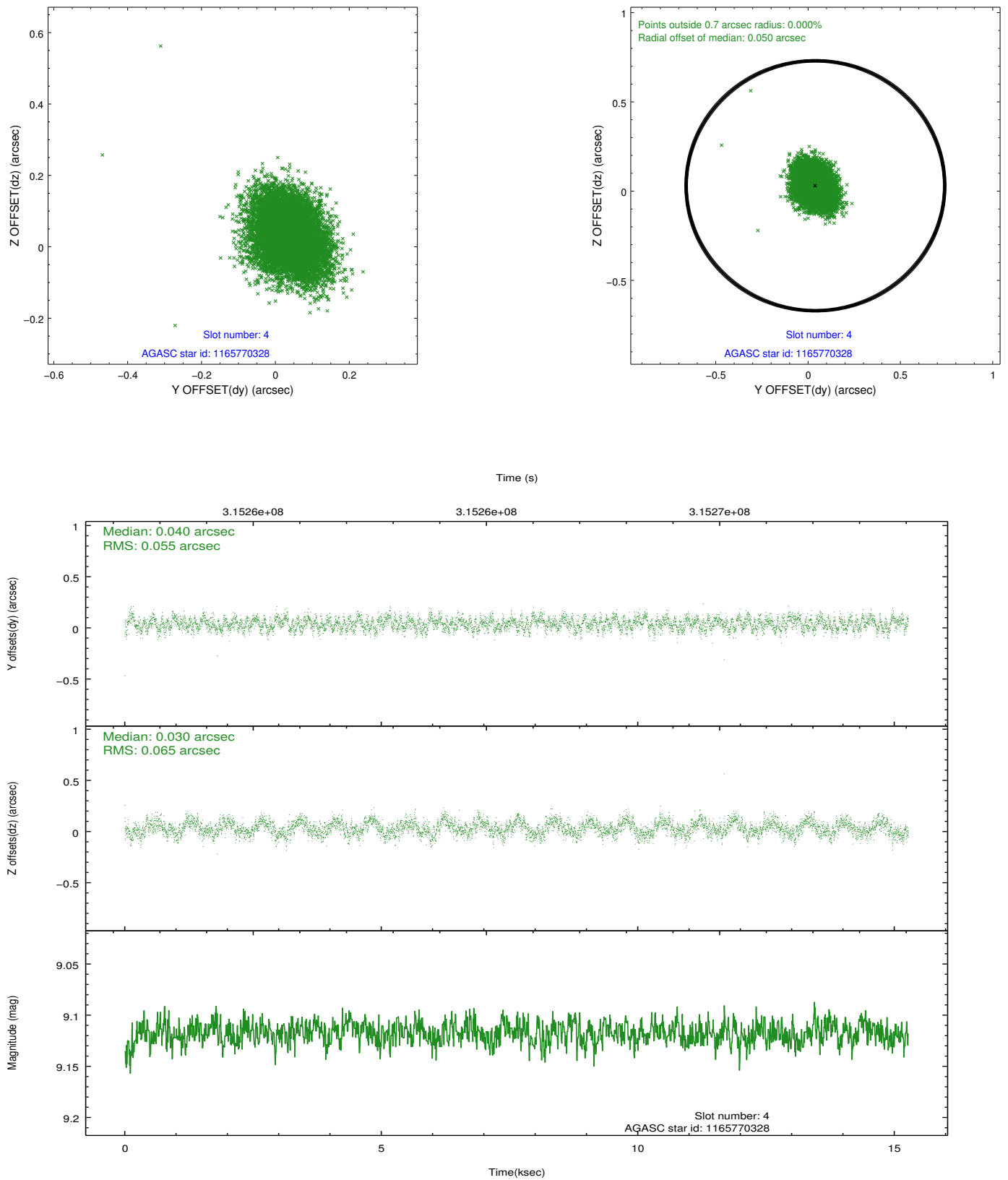
slot	status	id	mag	n_pts	med_dy	med_dz	dr1	dr2	ra	dec	mean_y	mean_z
0	FID	ACIS-S-1	7.20	3726	0.075	-0.029	0.010	0.016	0.000000	0.000000	930.42	-1730.48
1	FID	ACIS-S-4	7.19	3724	0.095	-0.011	0.014	0.022	0.000000	0.000000	2148.03	173.39
2	FID	ACIS-S-5	7.23	3726	-0.197	0.053	0.011	0.019	0.000000	0.000000	-1818.33	167.41
3	GUIDE	1165769568	9.15	7447	0.026	0.047	0.088	0.140	94.966799	-61.821220	-693.99	1994.44
4	GUIDE	1165770328	9.12	7442	0.040	0.030	0.090	0.144	94.916512	-61.741093	-789.75	2280.00
5	GUIDE	1166288232	8.45	7449	-0.067	0.127	0.074	0.116	96.353495	-62.422658	1692.13	-112.16
6	GUIDE	1166289624	7.98	7450	0.053	-0.255	0.095	0.145	95.229966	-62.354097	-186.98	91.53
7	GUIDE	1166290504	9.15	7443	-0.061	0.041	0.081	0.127	94.421217	-62.304320	-1545.23	220.78

2.4 Star Slots

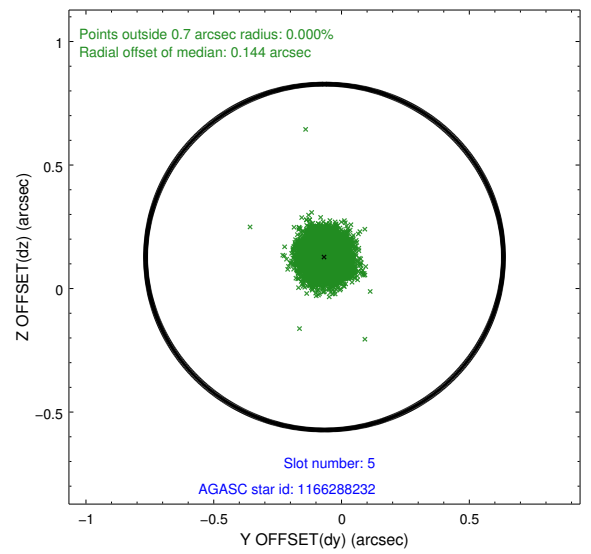
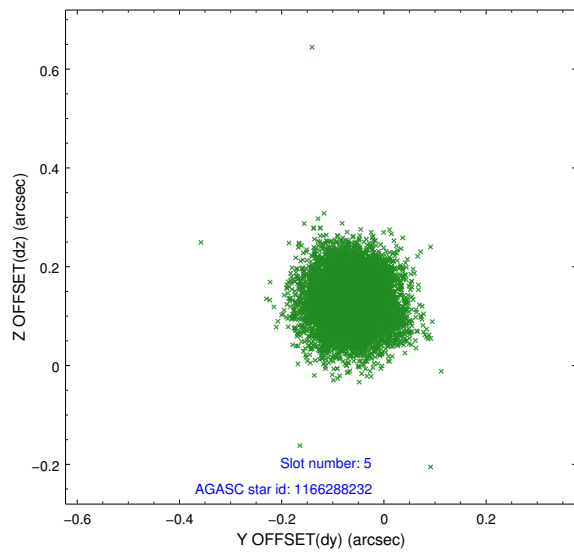
2.4.1 Slot 3



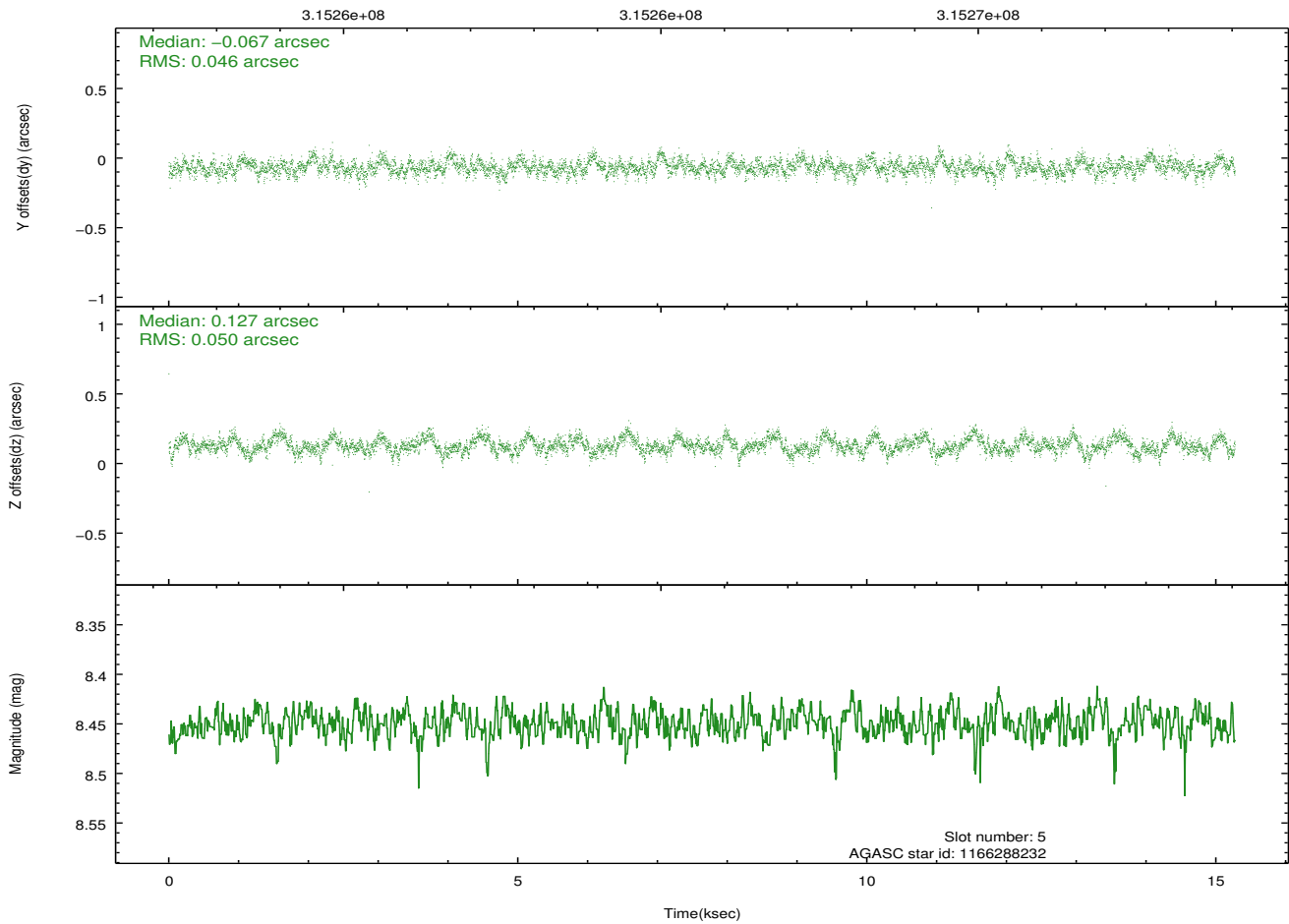
2.4.2 Slot 4



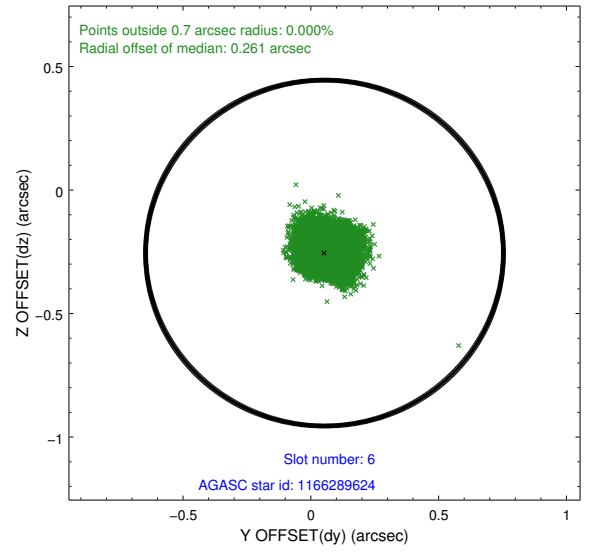
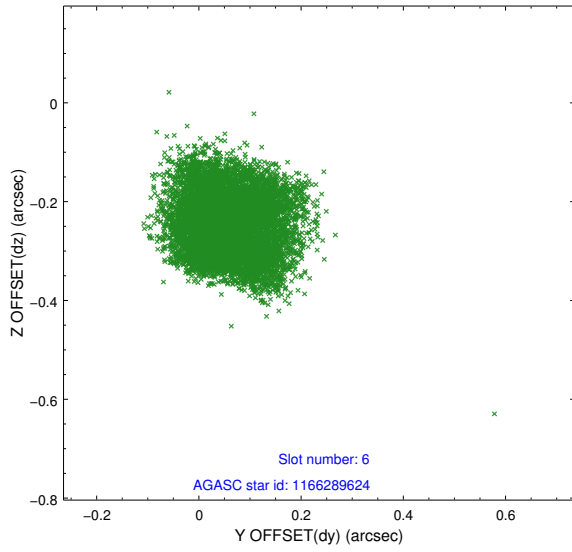
2.4.3 Slot 5



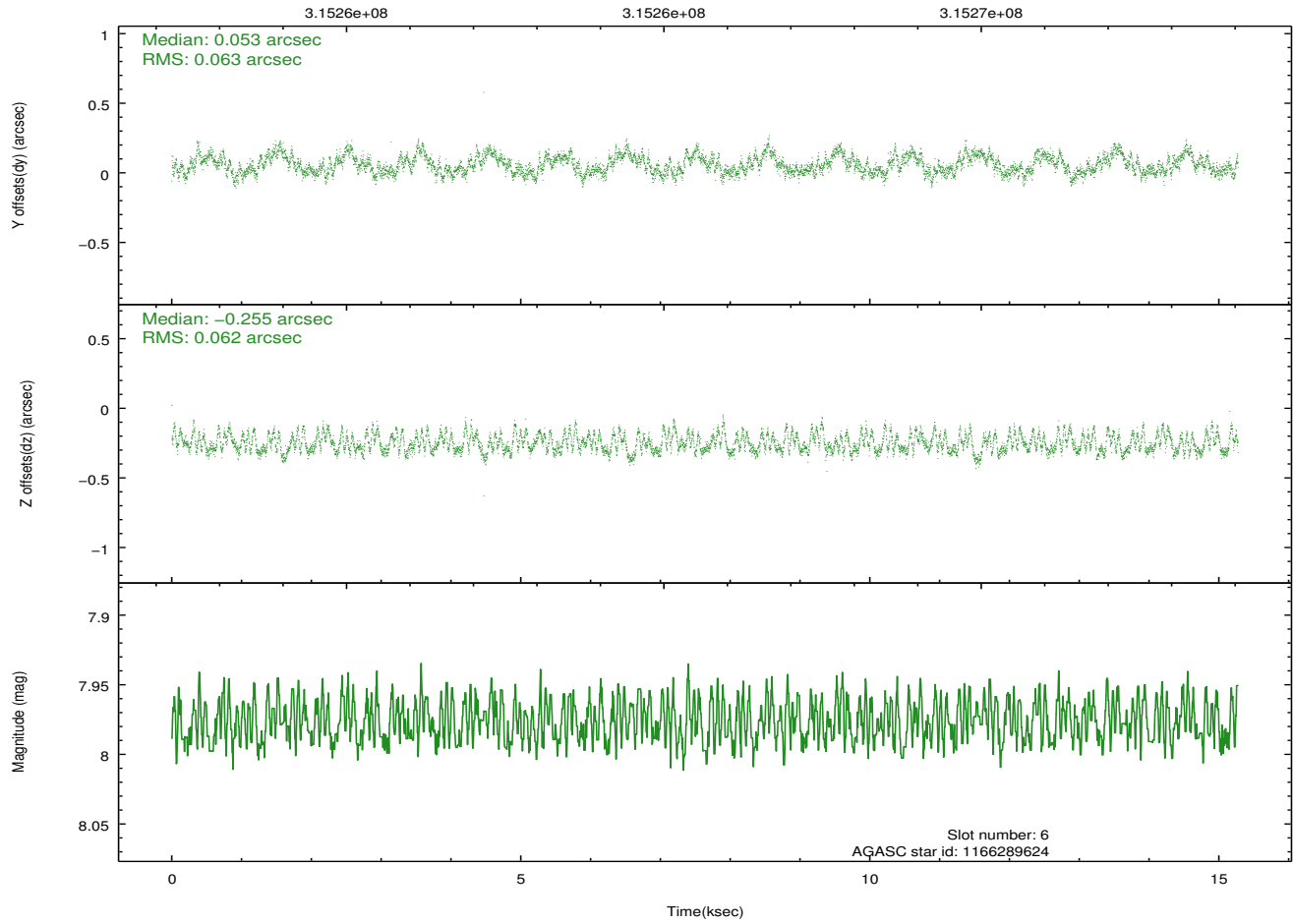
Time (s)



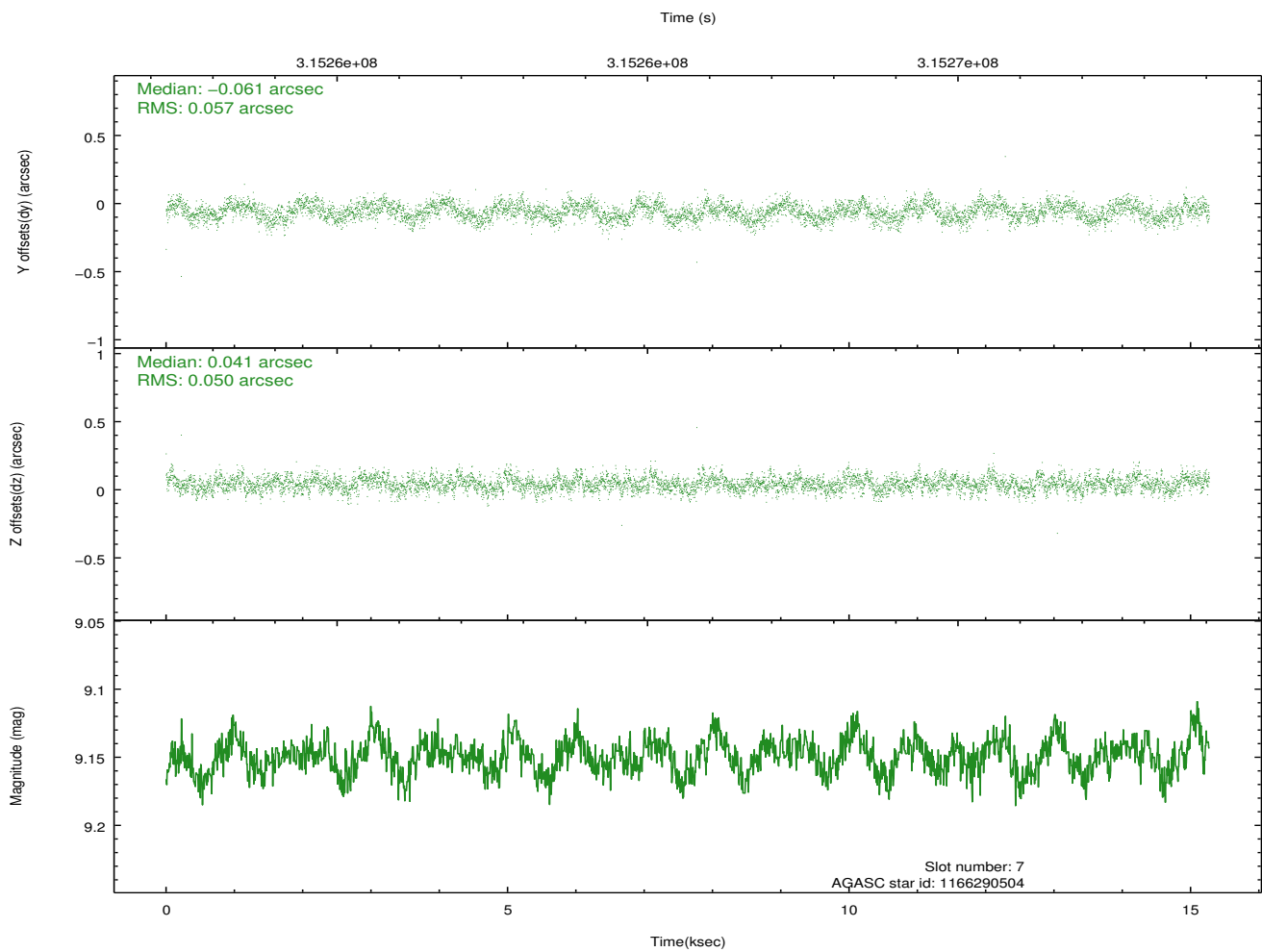
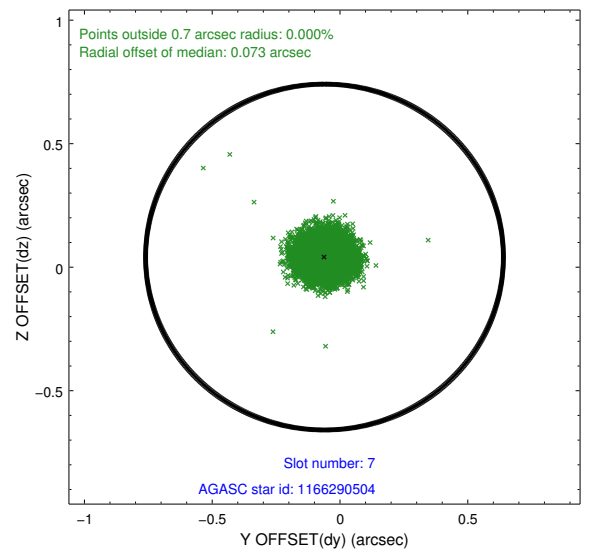
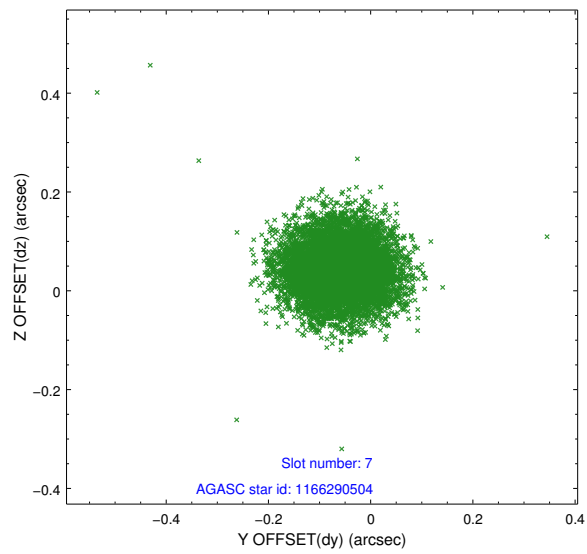
2.4.4 Slot 6



Time (s)

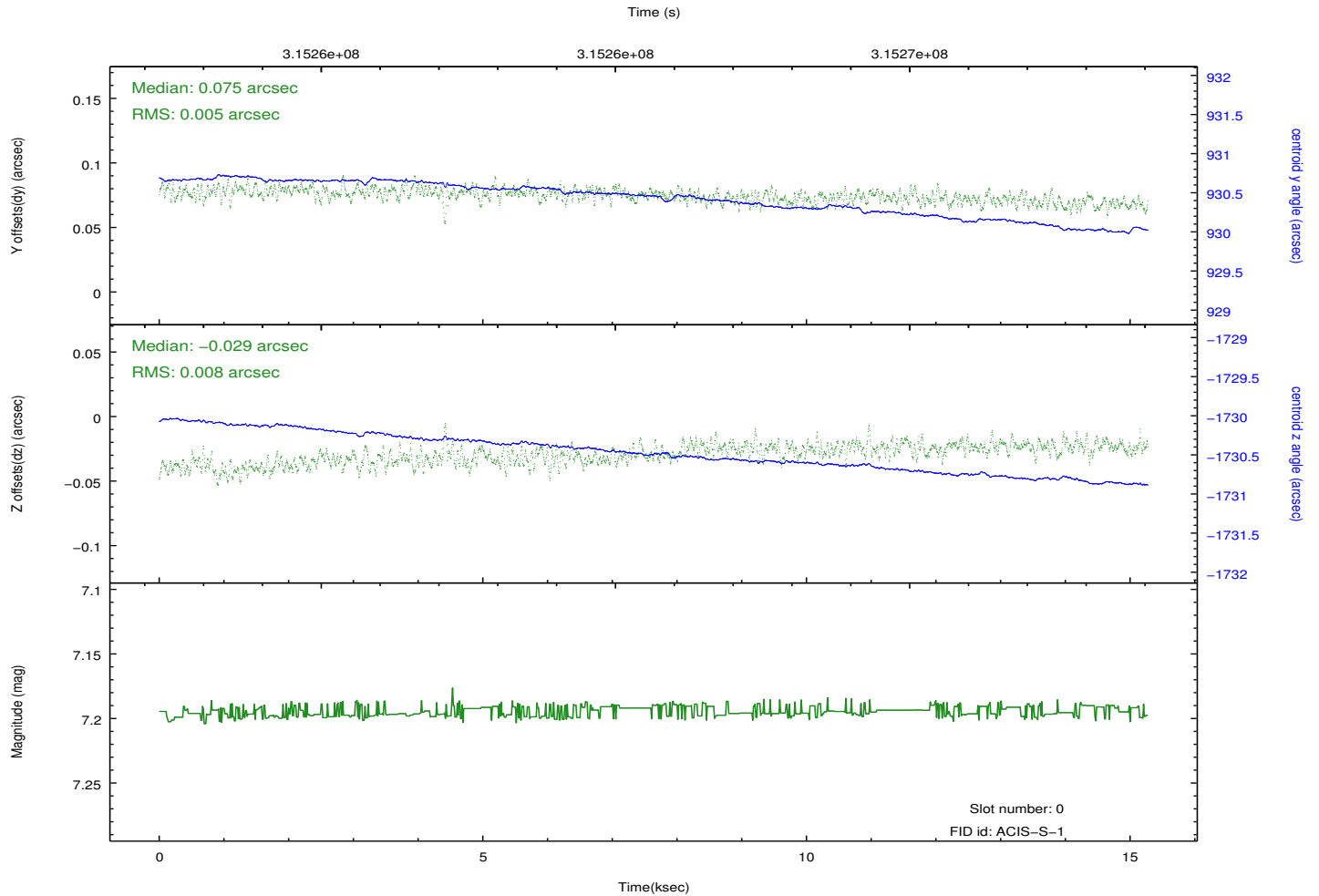
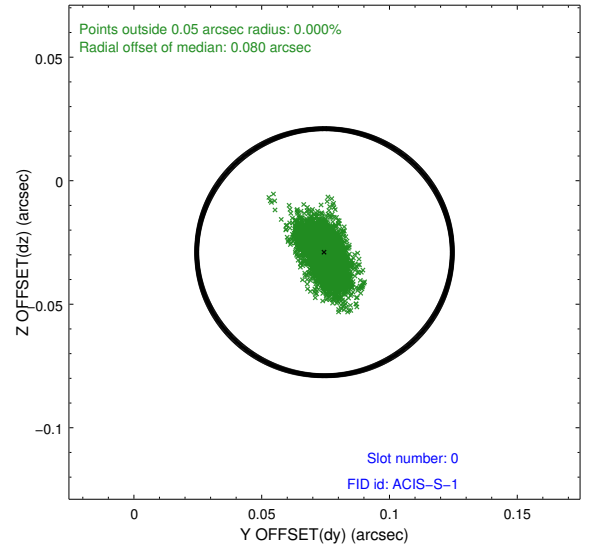
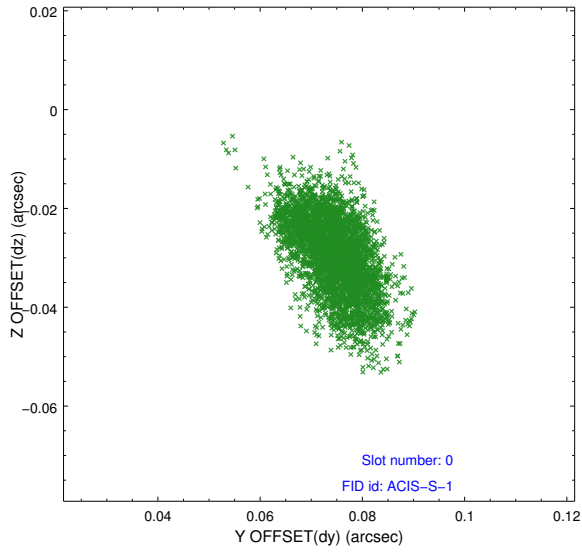


2.4.5 Slot 7

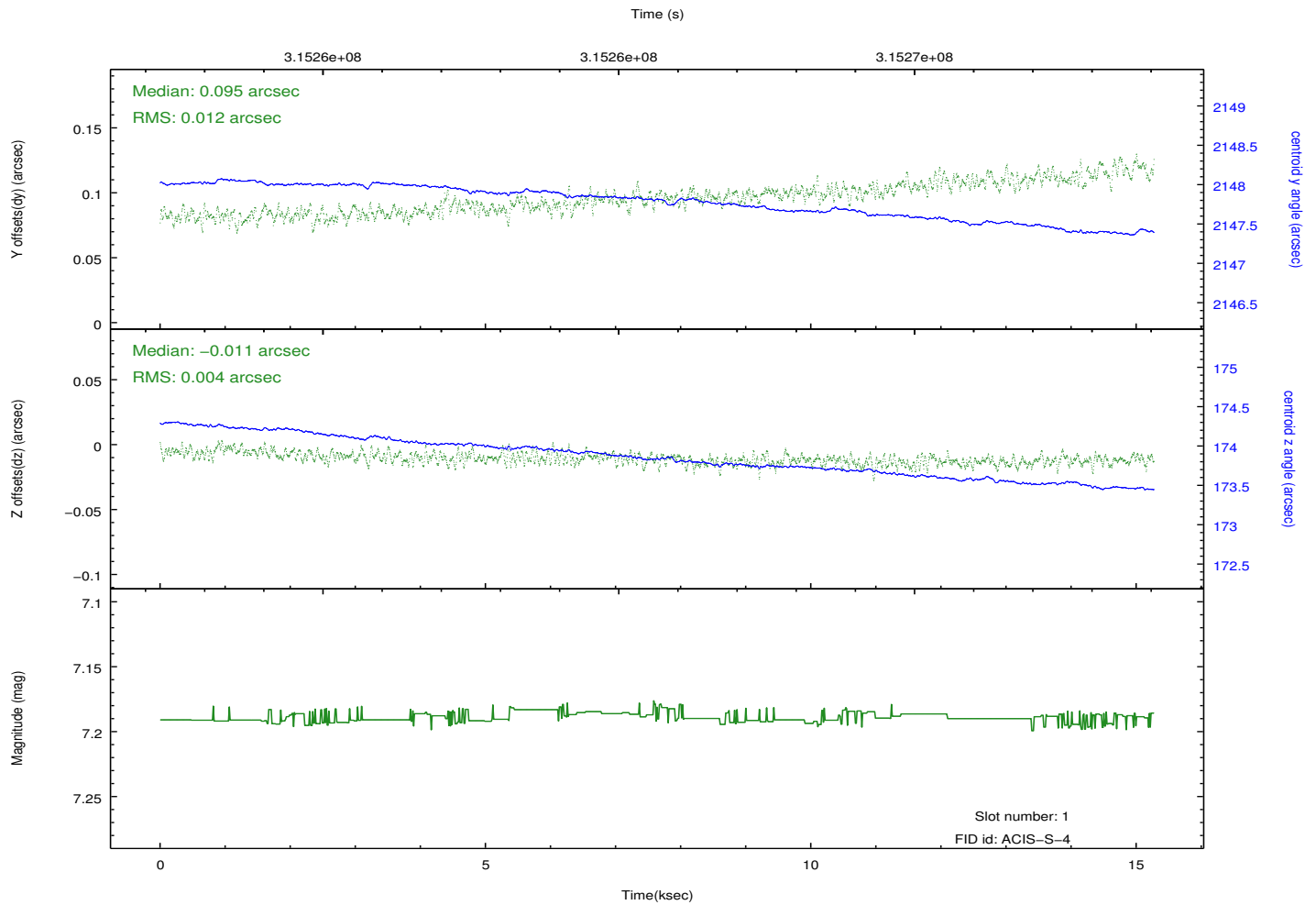
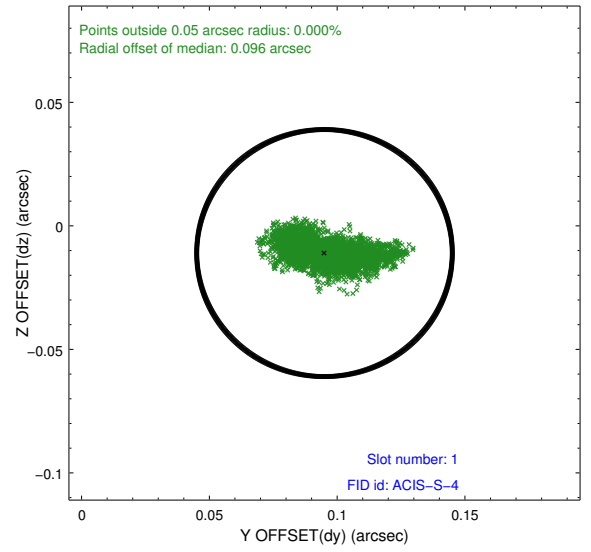
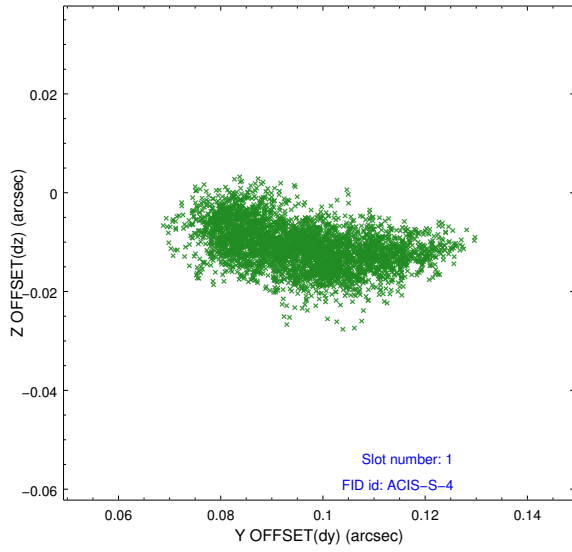


2.5 FID Slots

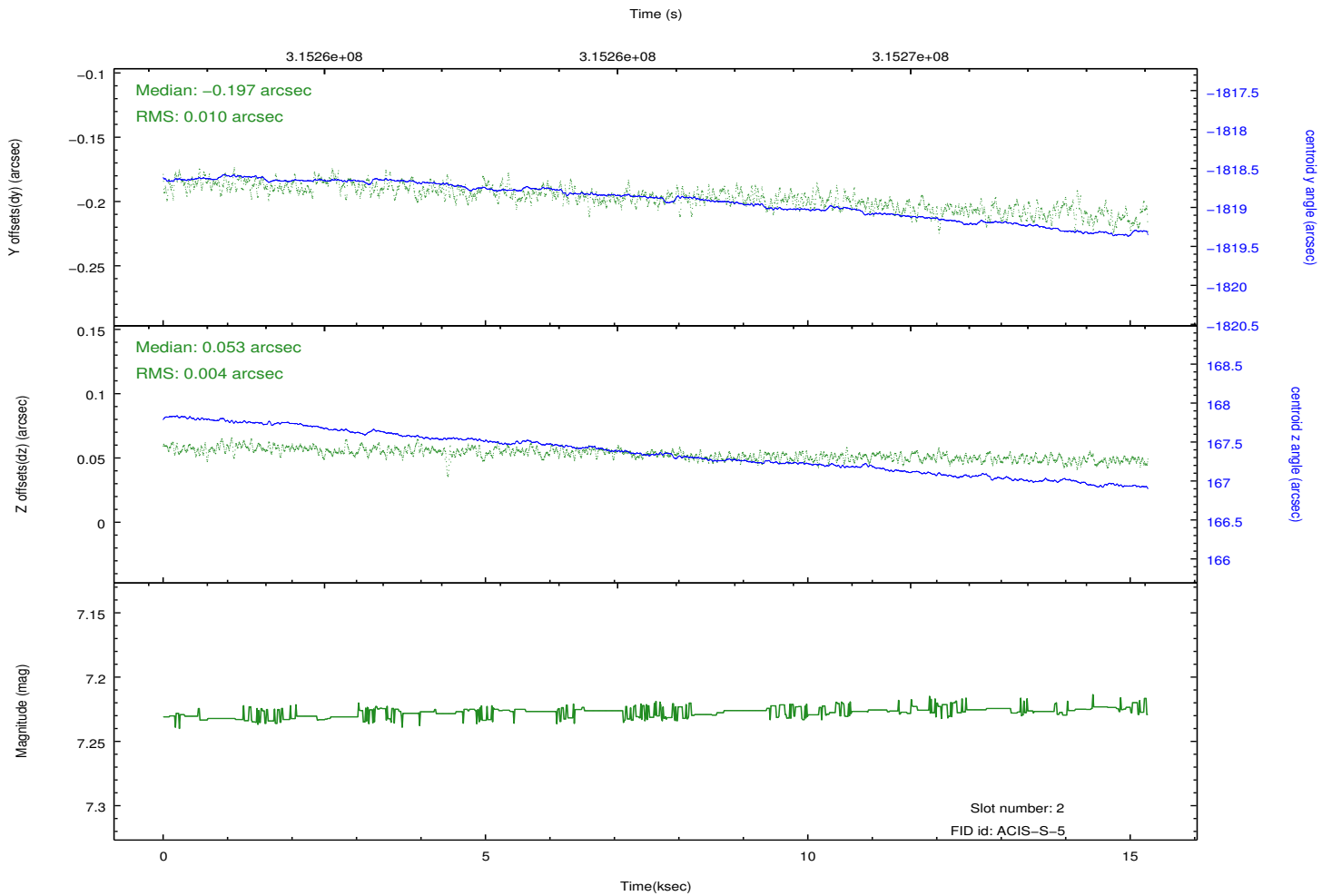
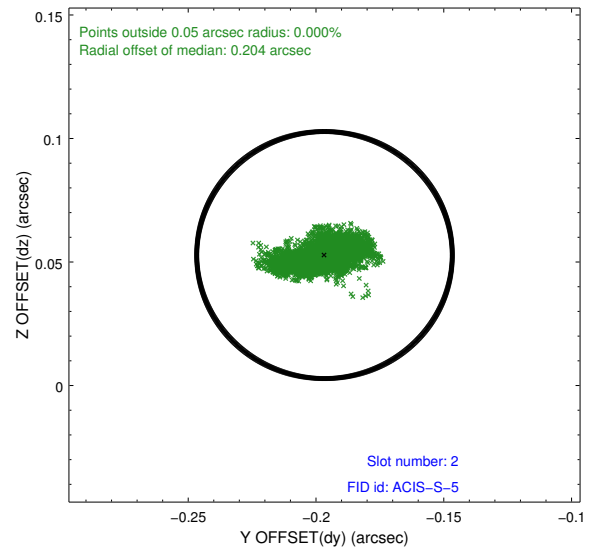
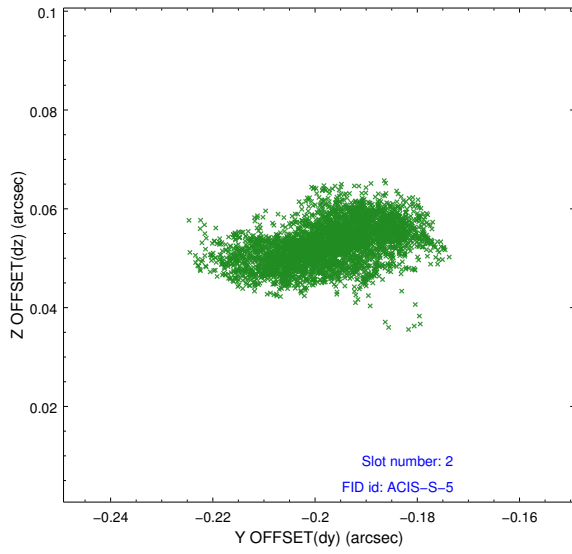
2.5.1 Slot 0



2.5.2 Slot 1



2.5.3 Slot 2



A Summary

A.1 Status

V&V Scientist	Jen Lauer
V&V Date (YYYY-MM-DD)	2012.05.08
V&V Edition	1
V&V Disposition and Status	OK
V&V Charge Time	15.2675001

A.2 Comments

Time constraint met