

V&V Reference Report

L2 ASCDS Version : 8.4.4

Observation 9811 - L2 Version 2
Chandra X-Ray Center

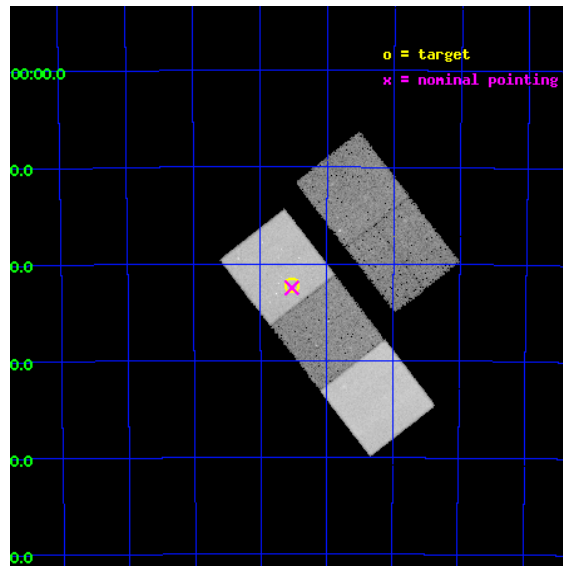
L2 Processing Date : May 14 2012

Contents

1	Front	2
2	OBI	3
2.1	OBI	3
2.1.1	Images	3
2.1.2	Bias	3
2.1.3	Parameters	4
2.1.4	Events	4
2.2	Compared Parameters	5
2.3	Aspect	6
2.4	Star Slots	9
2.4.1	Slot 3	9
2.4.2	Slot 4	10
2.4.3	Slot 5	11
2.4.4	Slot 6	12
2.4.5	Slot 7	13
2.5	FID Slots	14
2.5.1	Slot 0	14
2.5.2	Slot 1	15
2.5.3	Slot 2	16
A	Summary	17
A.1	Status	17
A.2	Comments	17

1 Front

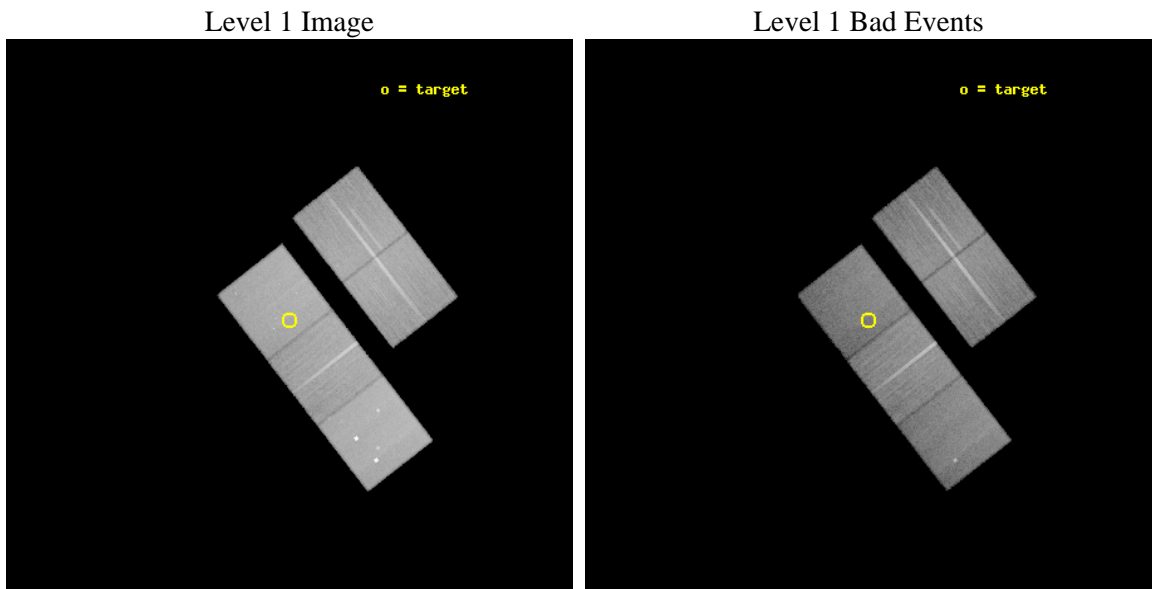
seq_num	500950	Sequence number
obs_id	9811	Observation id
title	The extreme late-time light curve of GRB 060729	Proposal title
observer	Dr. Dirk Grupe	Principal investigator
object	GRB 060729	Source name
dtcycle	0	
cycle	P	events from which exps? Prim/Second/Both
ra_targ	95.382917	Observer's specified target RA [deg]
dec_targ	-62.370139	Observer's specified target Dec [deg]
ra_nom	95.38178007381	Nominal RA [deg]
dec_nom	-62.374965652106	Nominal Dec [deg]
roll_nom	232.15562035304	Nominal Roll [deg]
revision	2	Processing version of data
ontime	31182.900239825	Sum of GTIs [s]
livetime	30775.472691675	Livetime [s]
ontime2	31179.759249508	Sum of GTIs [s]
ontime3	31176.618279219	Sum of GTIs [s]
ontime5	31182.900239825	Sum of GTIs [s]
ontime6	31179.759259462	Sum of GTIs [s]
ontime7	31182.900239825	Sum of GTIs [s]
l2events	346985	Number of level 2 events



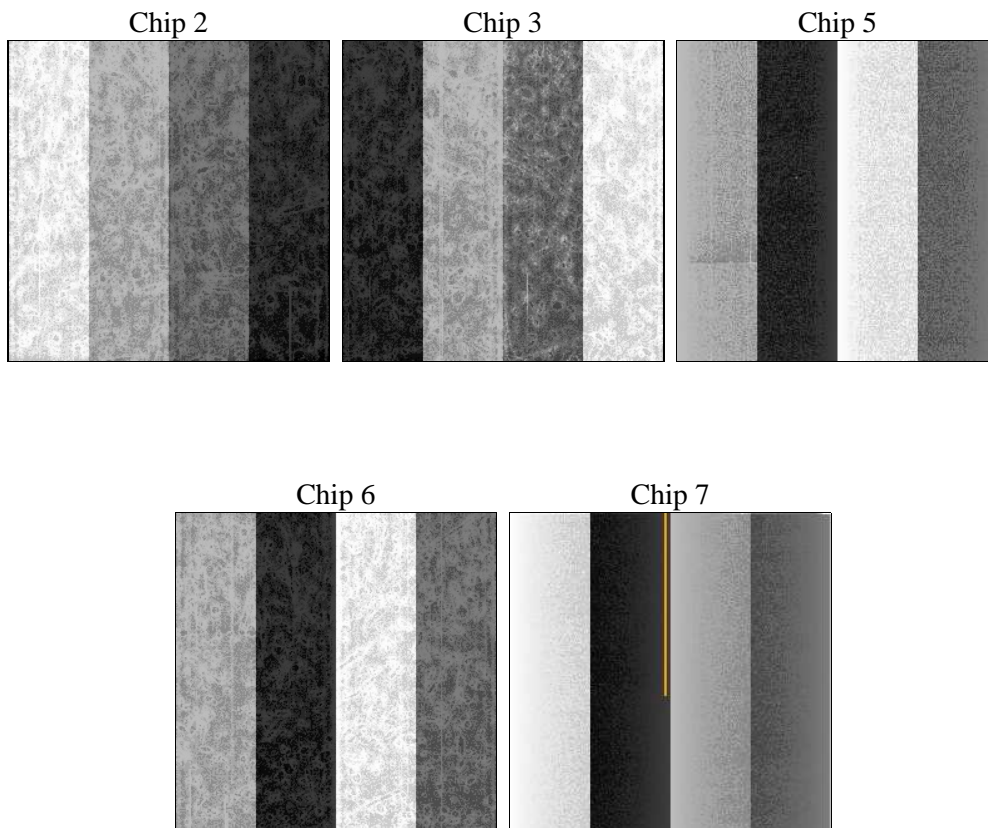
2 OBI

2.1 OBI

2.1.1 Images



2.1.2 Bias



2.1.3 Parameters

obi_num	0	Obi number	sched_exp_time	31000.000000	[s] Scheduled observation exposure time
ascdsver	8.4.4	Processing system revision	ontime	31182.900239825	Sum of GTIs [s]
caldsver	4.4.9	 	ontime2	31179.759249508	Sum of GTIs [s]
date	2012-05-14T01:58:54	Date and time of file creation	ontime3	31176.618279219	Sum of GTIs [s]
revision	2	Processing version of data	ontime5	31182.900239825	Sum of GTIs [s]
			ontime6	31179.759259462	Sum of GTIs [s]
			ontime7	31182.900239825	Sum of GTIs [s]
			l1events	1367247	Number of level 1 events

2.1.4 Events

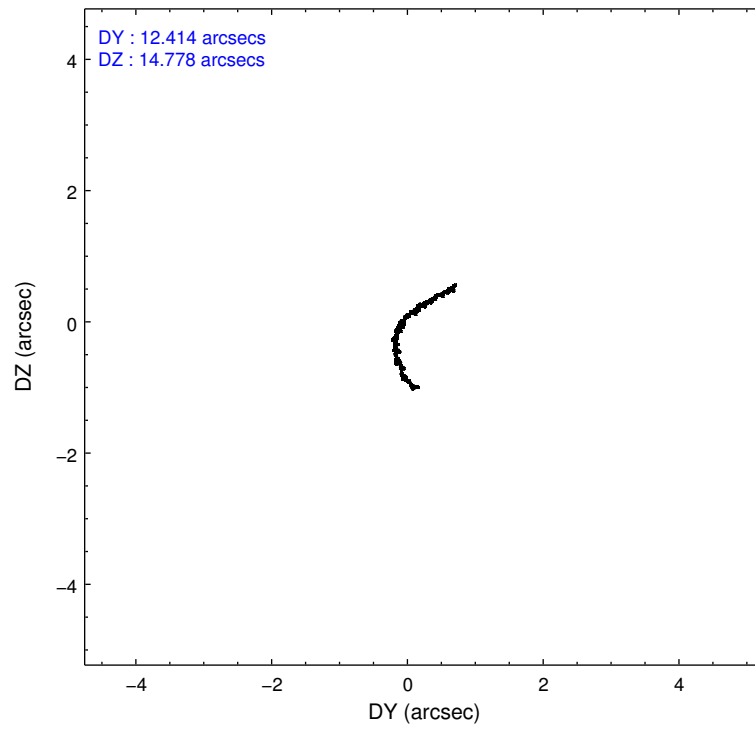
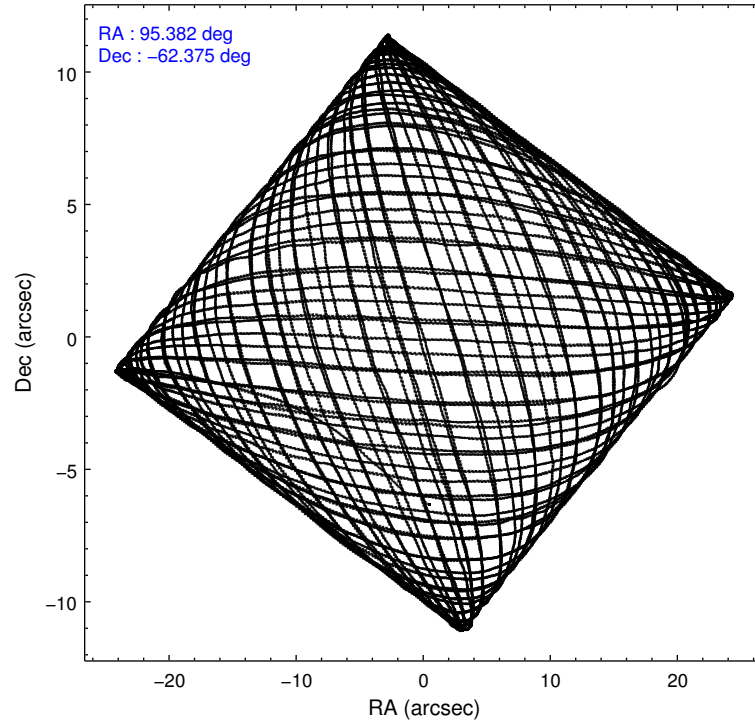
	ccd 2	ccd 3	ccd 5	ccd 6	ccd 7
level 1 events	246097	235884	355118	250802	279346
rejected events	222397	212798	174360	224920	151419
rejected %	90%	90%	49%	89%	54%

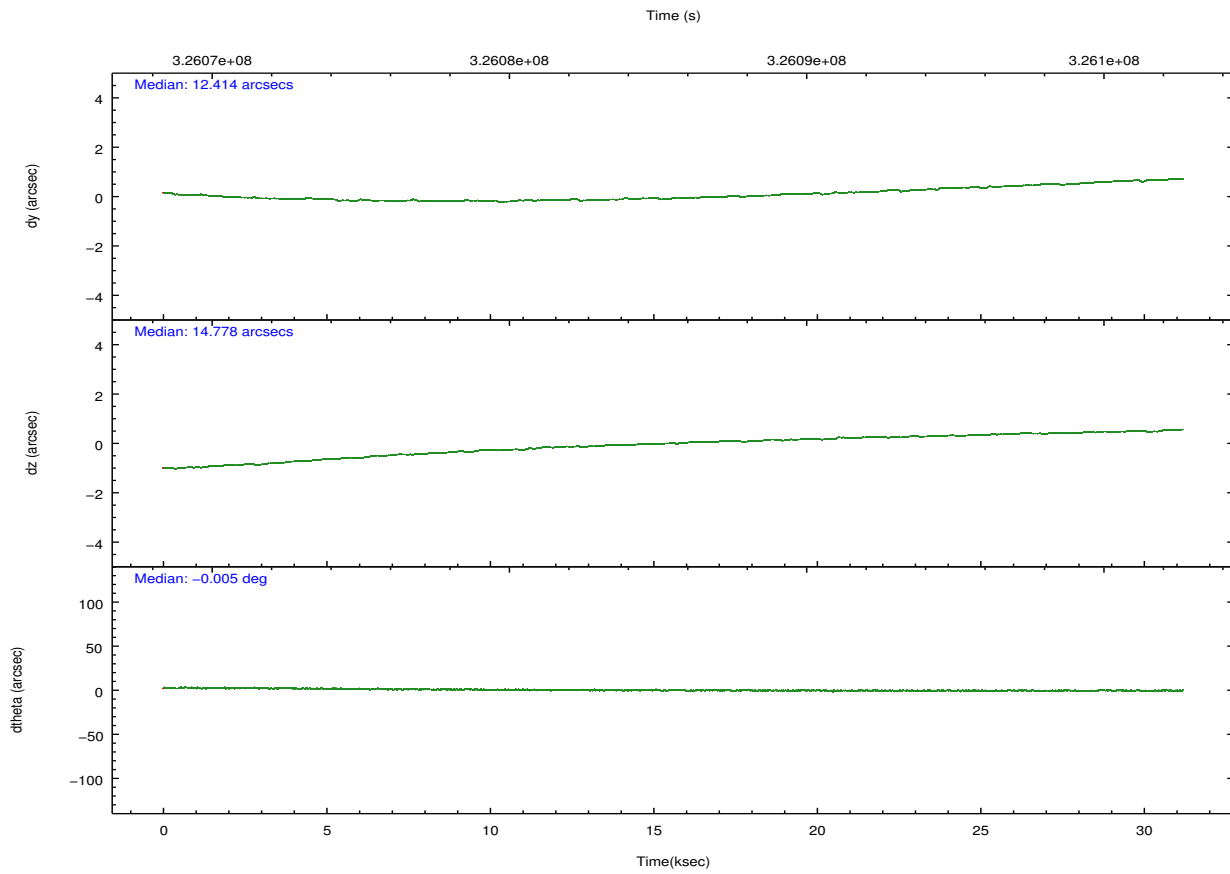
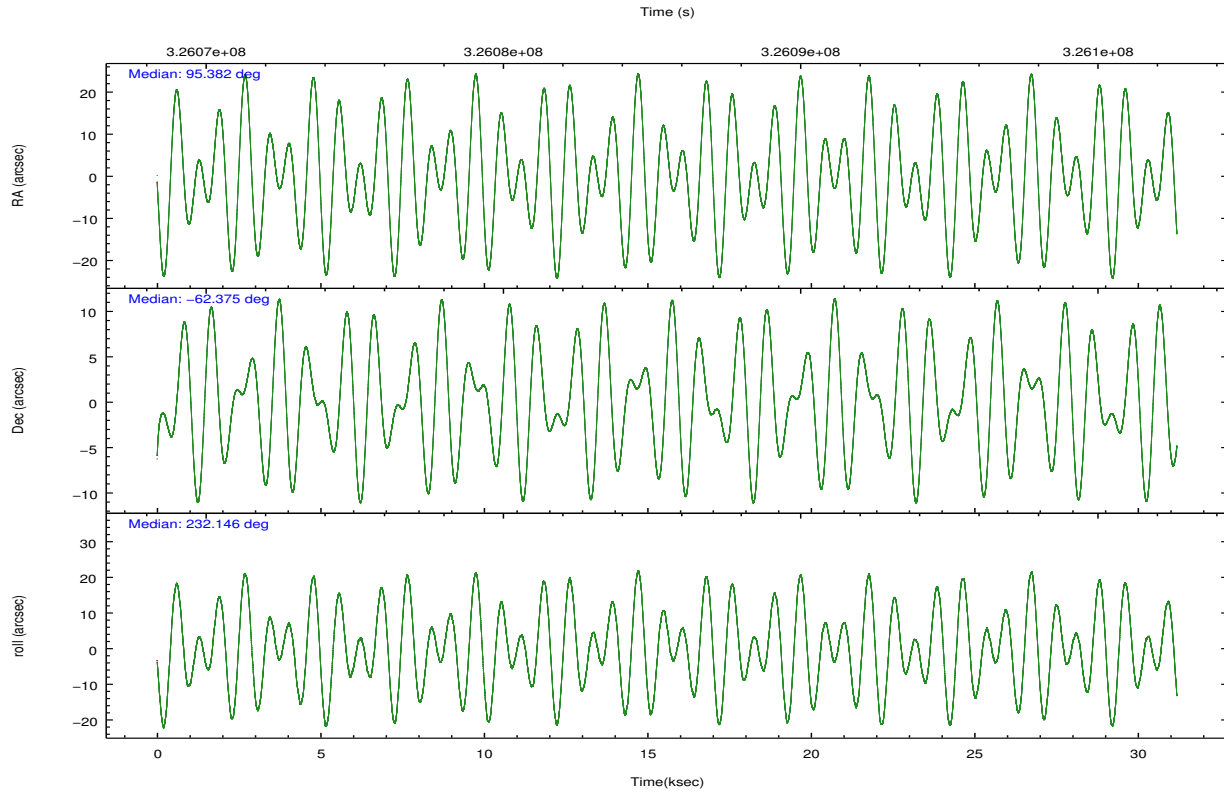
	ccd 2	ccd 3	ccd 5	ccd 6	ccd 7
grade 0 events	8387	8176	26045	8970	12203
	3%	3%	7%	3%	4%
grade 1 events	135	144	1584	134	357
	0%	0%	0%	0%	0%
grade 2 events	5718	4993	51851	5792	26276
	2%	2%	14%	2%	9%
grade 3 events	2497	2587	6965	2823	11703
	1%	1%	1%	1%	4%
grade 4 events	2610	2639	6855	2695	11495
	1%	1%	1%	1%	4%
grade 5 events	7905	9949	27183	10136	29202
	3%	4%	7%	4%	10%
grade 6 events	4505	4704	89134	5614	66330
	1%	1%	25%	2%	23%
grade 7 events	214340	202692	145501	214638	121780
	87%	85%	40%	85%	43%

2.2 Compared Parameters

Parameter	Planned	Actual	Parameter	Planned	Actual
Instrument	ACIS	ACIS	Obspar format version number	7	7
Detector	ACIS-23567	ACIS-23567	Obspar file type	PREDICTED	ACTUAL
Grating	NONE	NONE	Obspar update status	NONE	UPDATED
Data mode	VFAINT	VFAINT	Number of optional ACIS chips dropped	0	0
Observation mode	POINTING	POINTING	On-chip summing requested	N	N
[deg] Pointing RA	95.389043	95.38178007381032	Subarray requested	NONE	NONE
[deg] Pointing Dec	-62.347823	-62.37496565210603	Alternating exposures requested	N	N
[deg] Pointing Roll	232.005427	232.1556203530413	[s] Primary exposure time	0.000000	3.1
[mm] SIM focus pos	-0.684267	-0.6828225247311905			
[mm] SIM defocus	0	0.001444936568705701			
[mm] SIM translation stage pos	-190.132523	-190.1400660498719			
[mm] SIM translation stage offset	0	0.00754346686406393			
[s] Observation start time (MET)	326070099.184000	326069091.32727			
Observation start date	2008-05-01T23:00:34	2008-05-01T22:44:51			
[s] Observation end time (MET)	326101099.184000	326101804.20386			
Observation end date	2008-05-02T07:37:14	2008-05-02T07:50:04			
Read mode	TIMED	TIMED			

2.3 Aspect



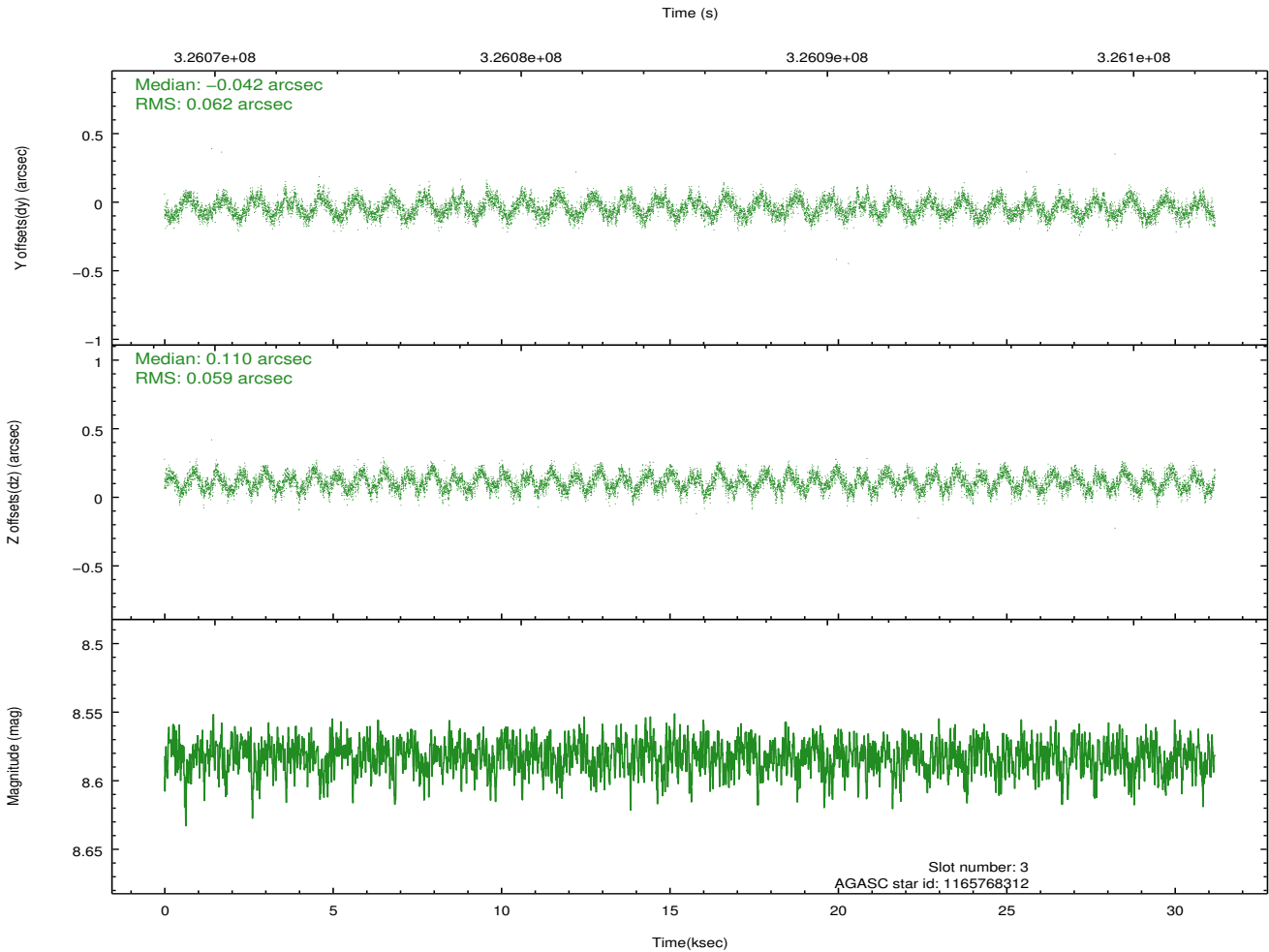
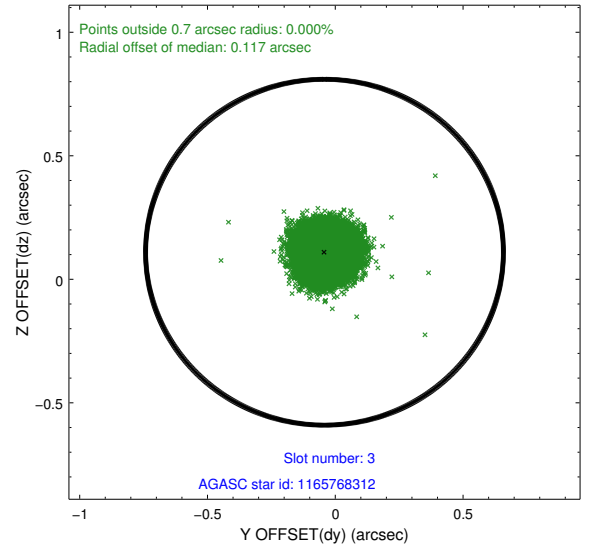
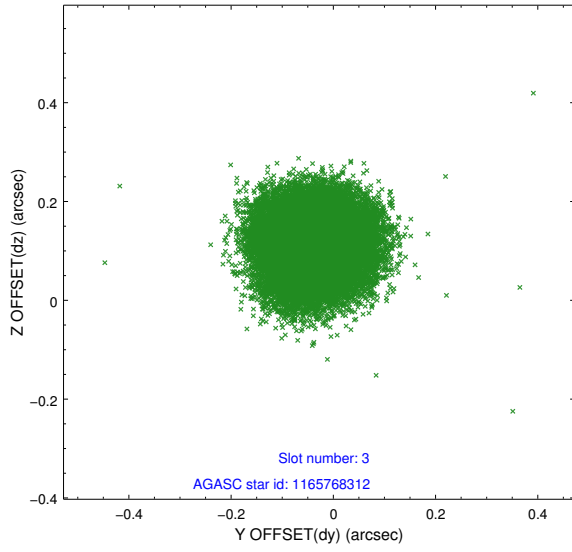


Slot Statistics

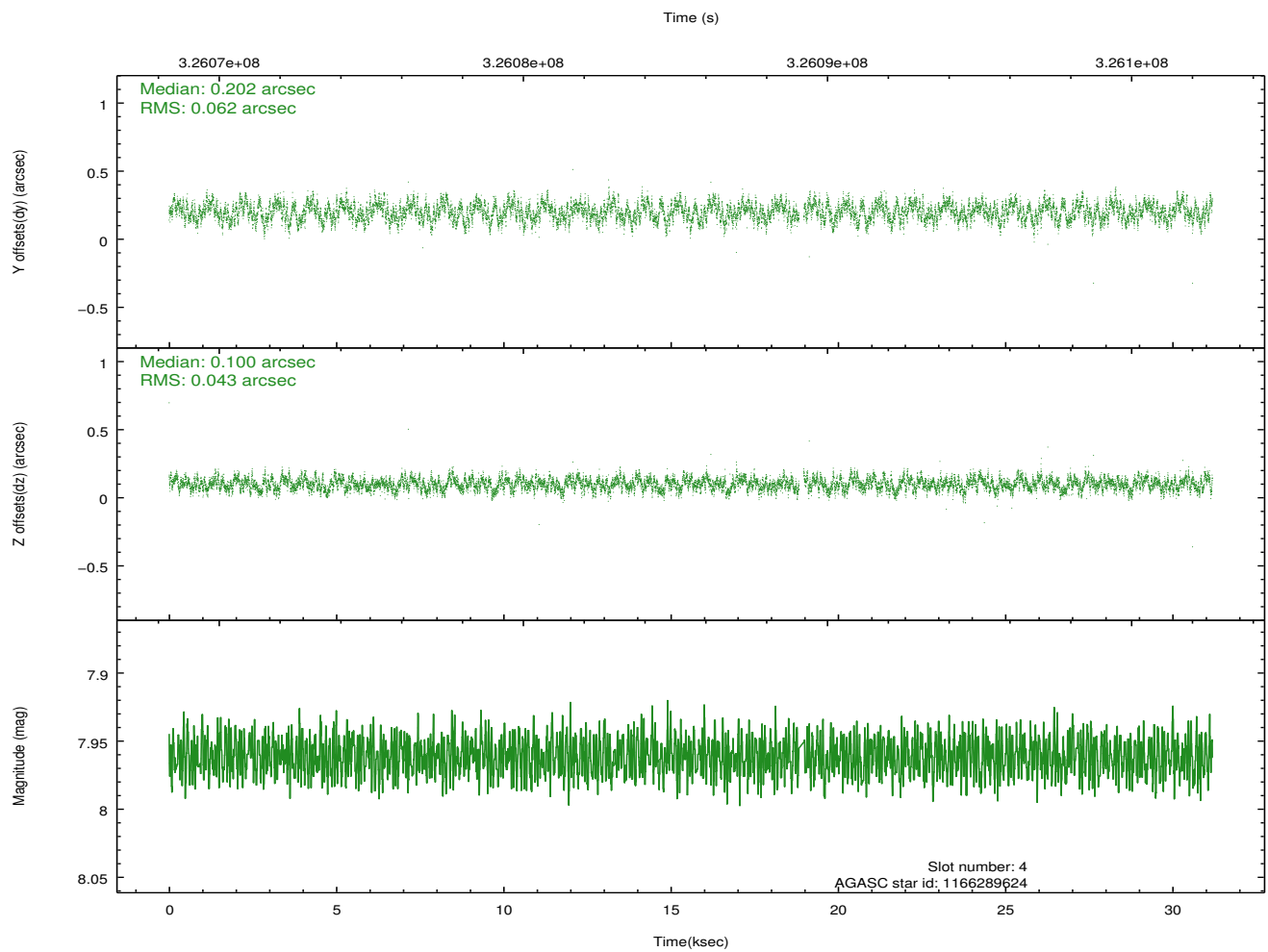
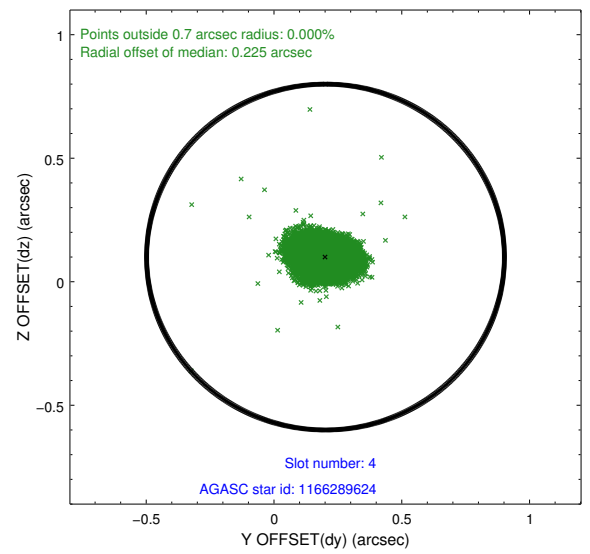
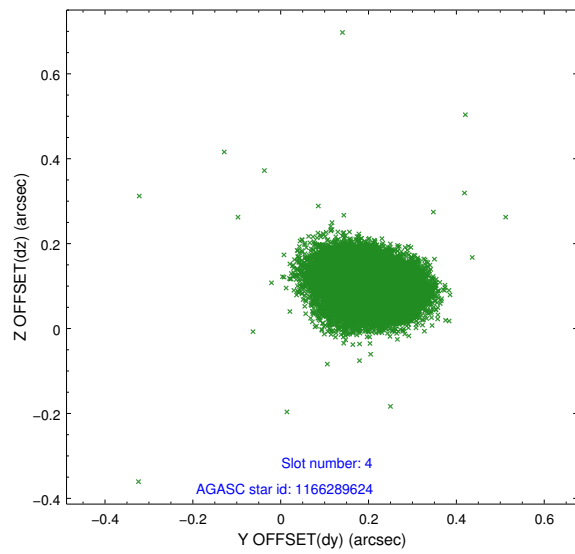
slot	status	id	mag	n_pts	med_dy	med_dz	dr1	dr2	ra	dec	mean_y	mean_z
0	FID	ACIS-S-2	6.85	7608	-0.038	0.013	0.009	0.019	0.000000	0.000000	-765.43	-1736.06
1	FID	ACIS-S-4	6.94	7607	0.086	0.015	0.012	0.028	0.000000	0.000000	2147.92	172.39
2	FID	ACIS-S-5	6.97	7608	-0.082	-0.020	0.012	0.021	0.000000	0.000000	-1818.26	166.06
3	GUIDE	1165768312	8.58	15208	-0.042	0.110	0.094	0.137	95.468462	-61.602862	-2196.74	-1543.70
4	GUIDE	1166289624	7.96	15143	0.202	0.100	0.080	0.126	95.229966	-62.354097	181.91	-194.91
5	GUIDE	1166290504	9.15	15157	-0.024	-0.084	0.088	0.145	94.421217	-62.304320	883.25	-1364.90
6	GUIDE	1166293432	7.19	15213	-0.044	-0.030	0.072	0.113	95.278960	-62.189330	-335.41	-496.70
7	GUIDE	1166293888	7.03	15212	-0.092	-0.104	0.071	0.117	96.952580	-62.149930	-2155.19	1652.92

2.4 Star Slots

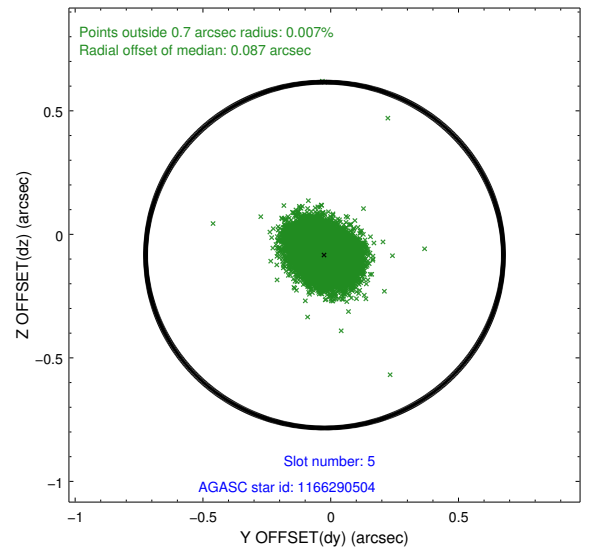
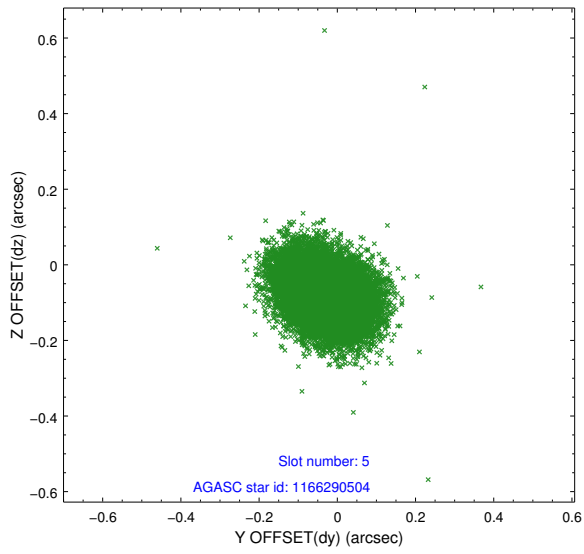
2.4.1 Slot 3



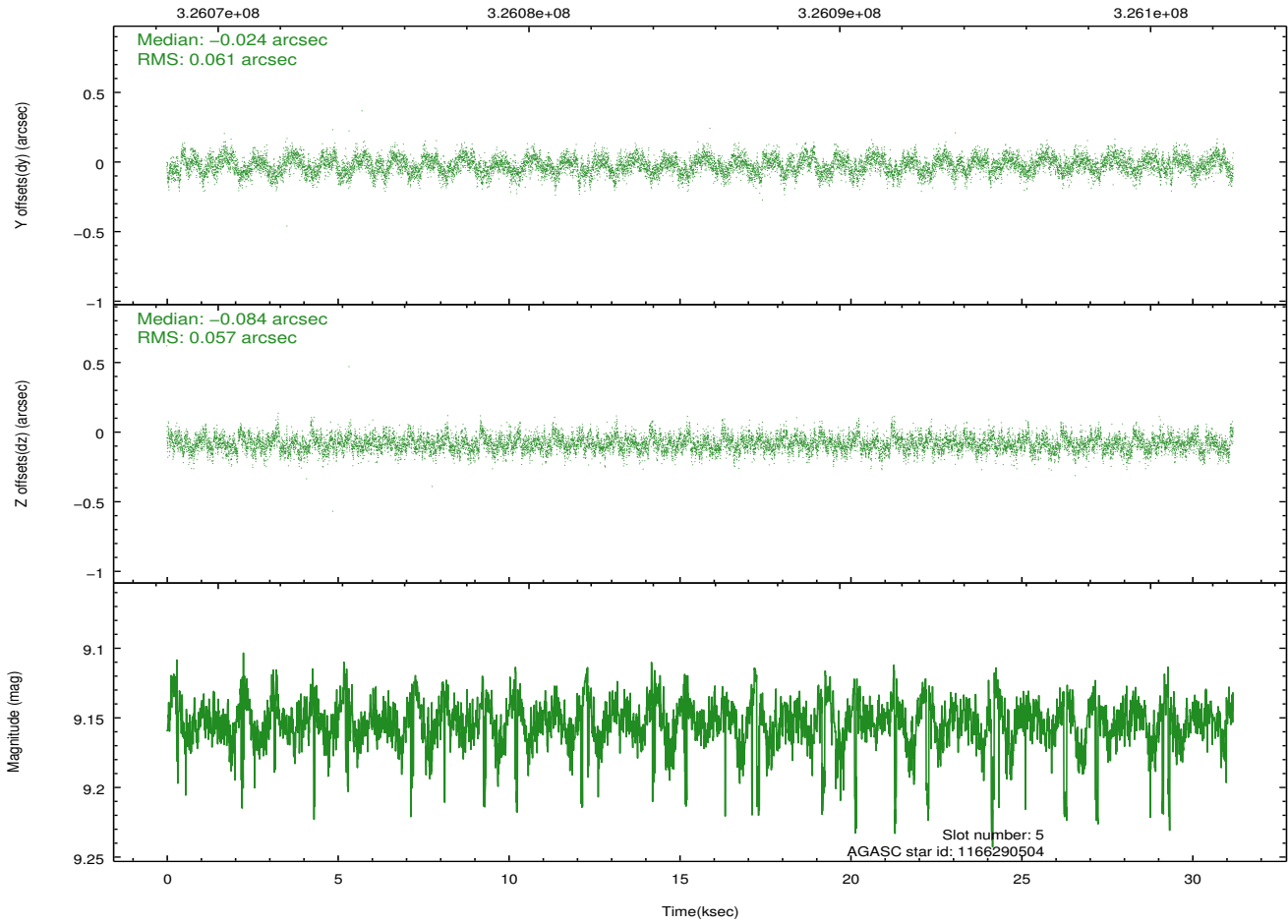
2.4.2 Slot 4



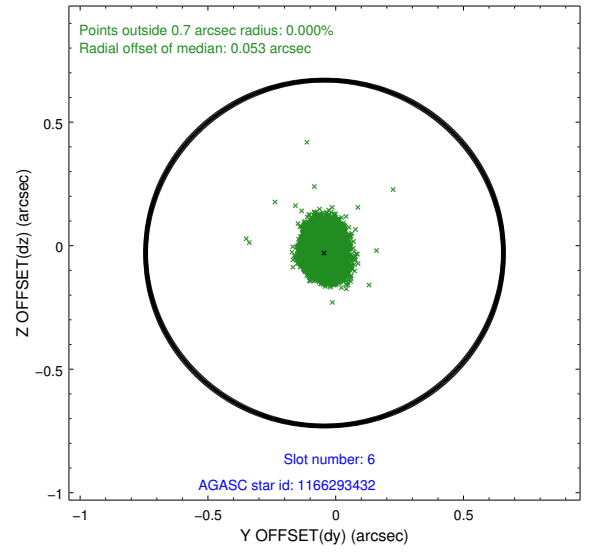
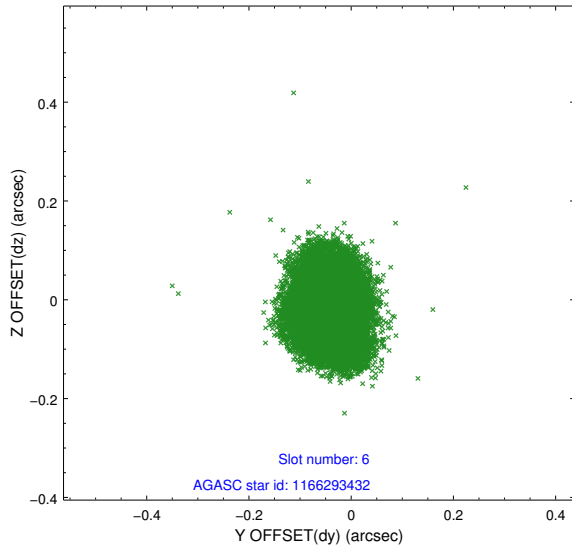
2.4.3 Slot 5



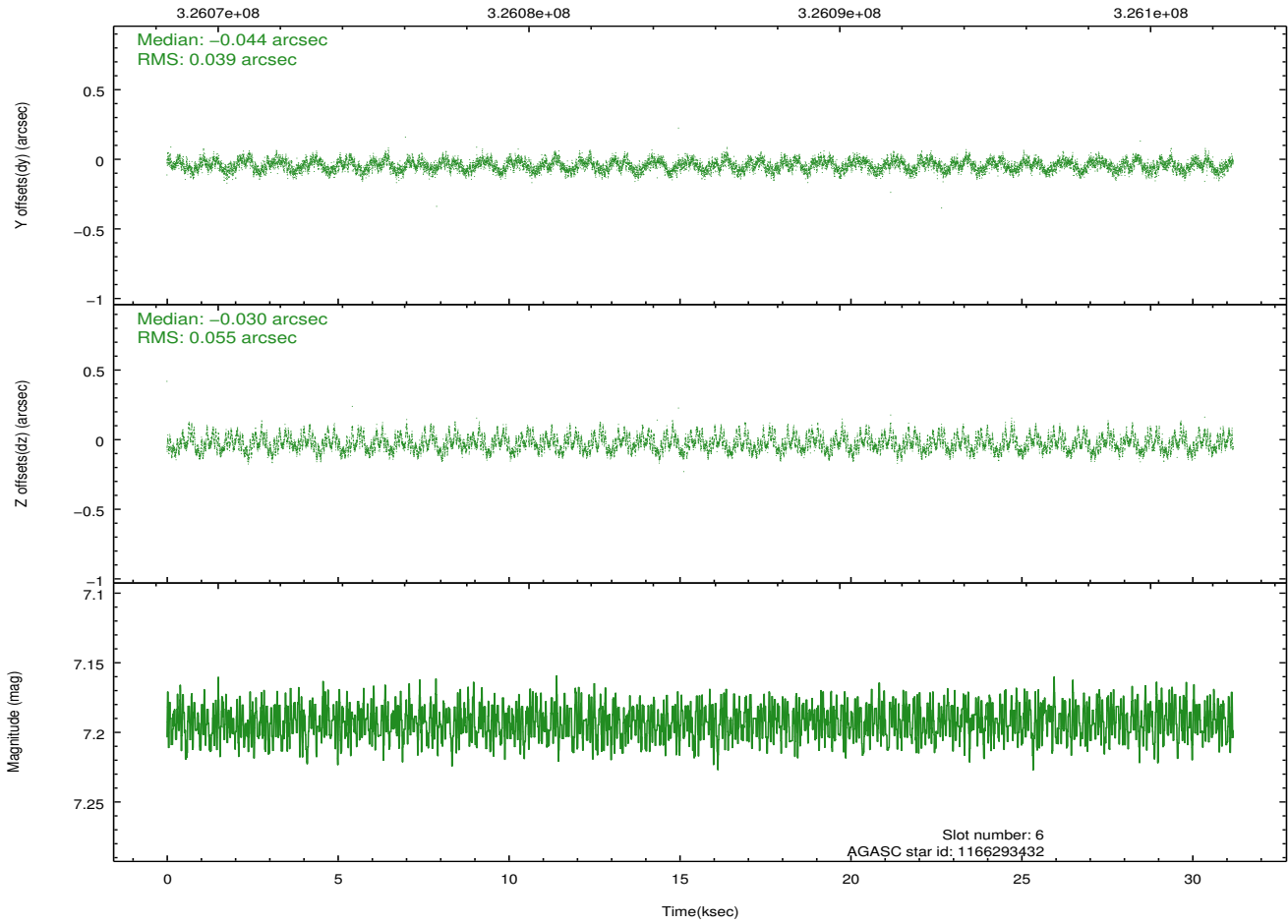
Time (s)



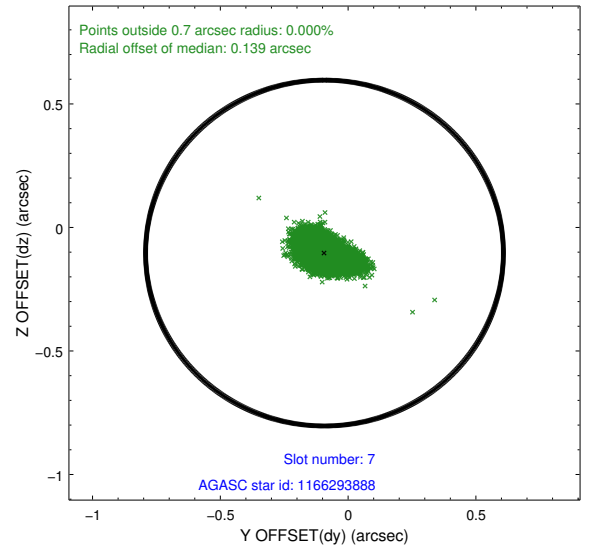
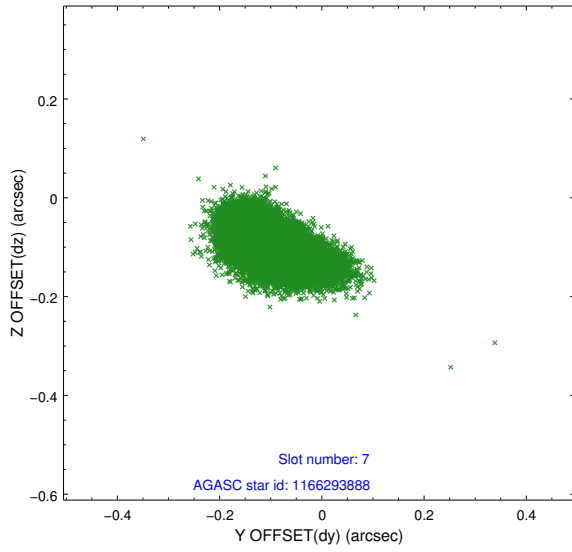
2.4.4 Slot 6



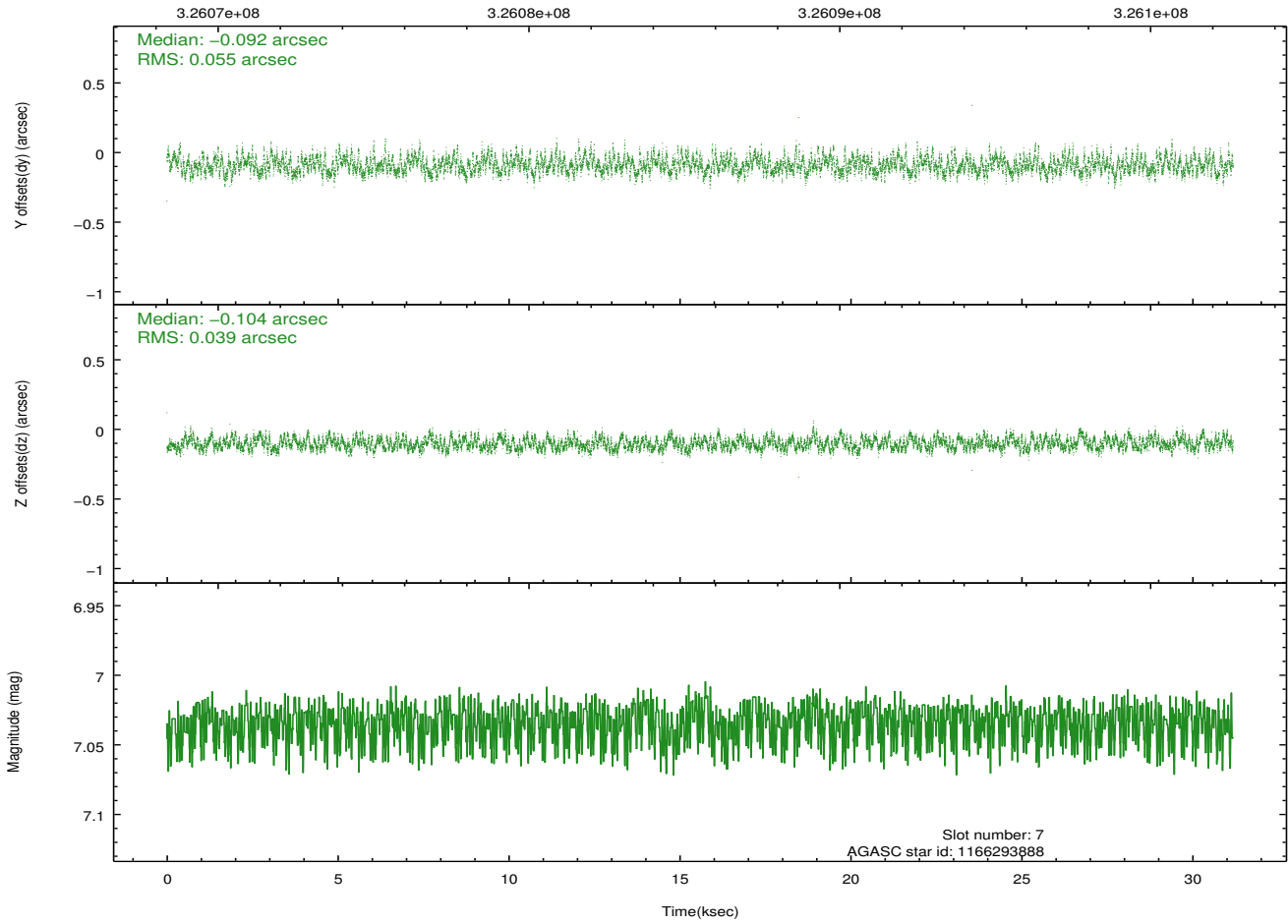
Time (s)



2.4.5 Slot 7

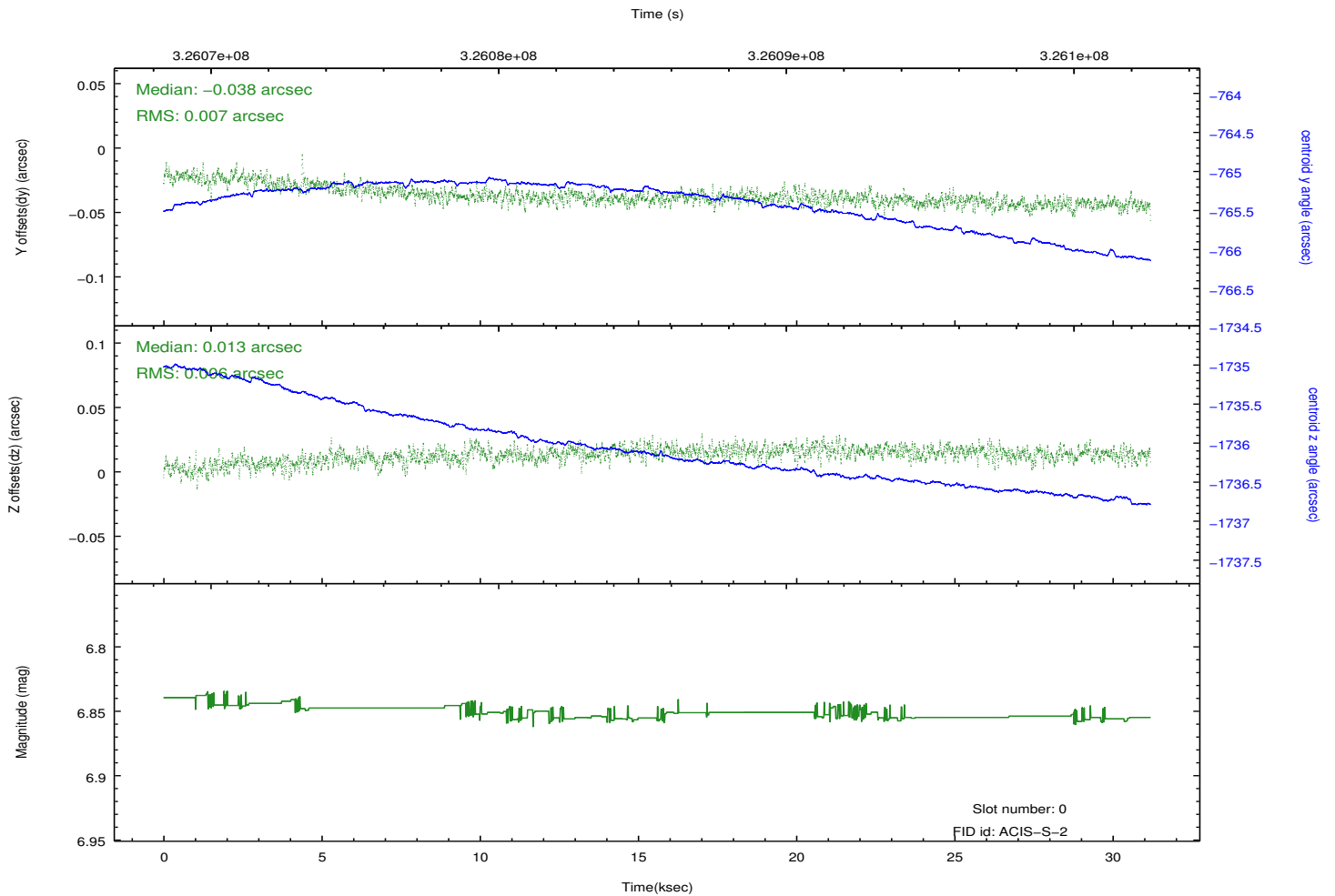
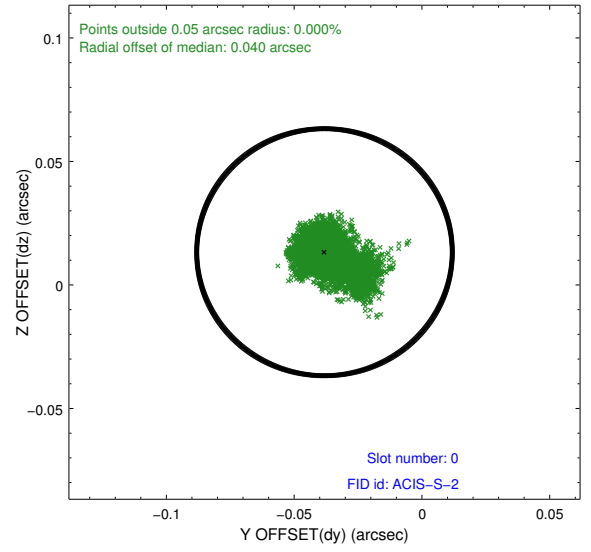
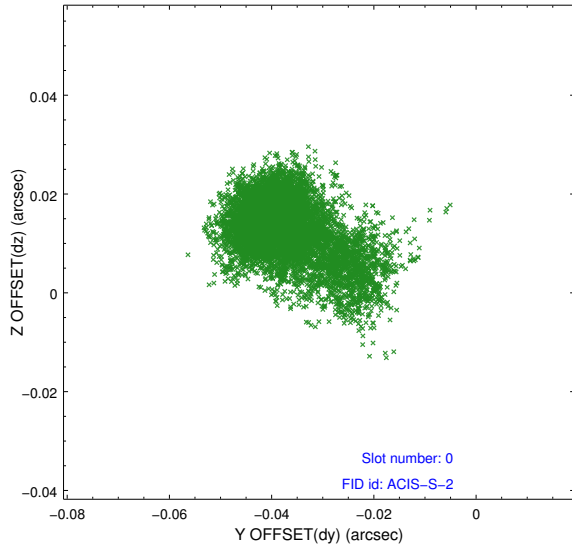


Time (s)

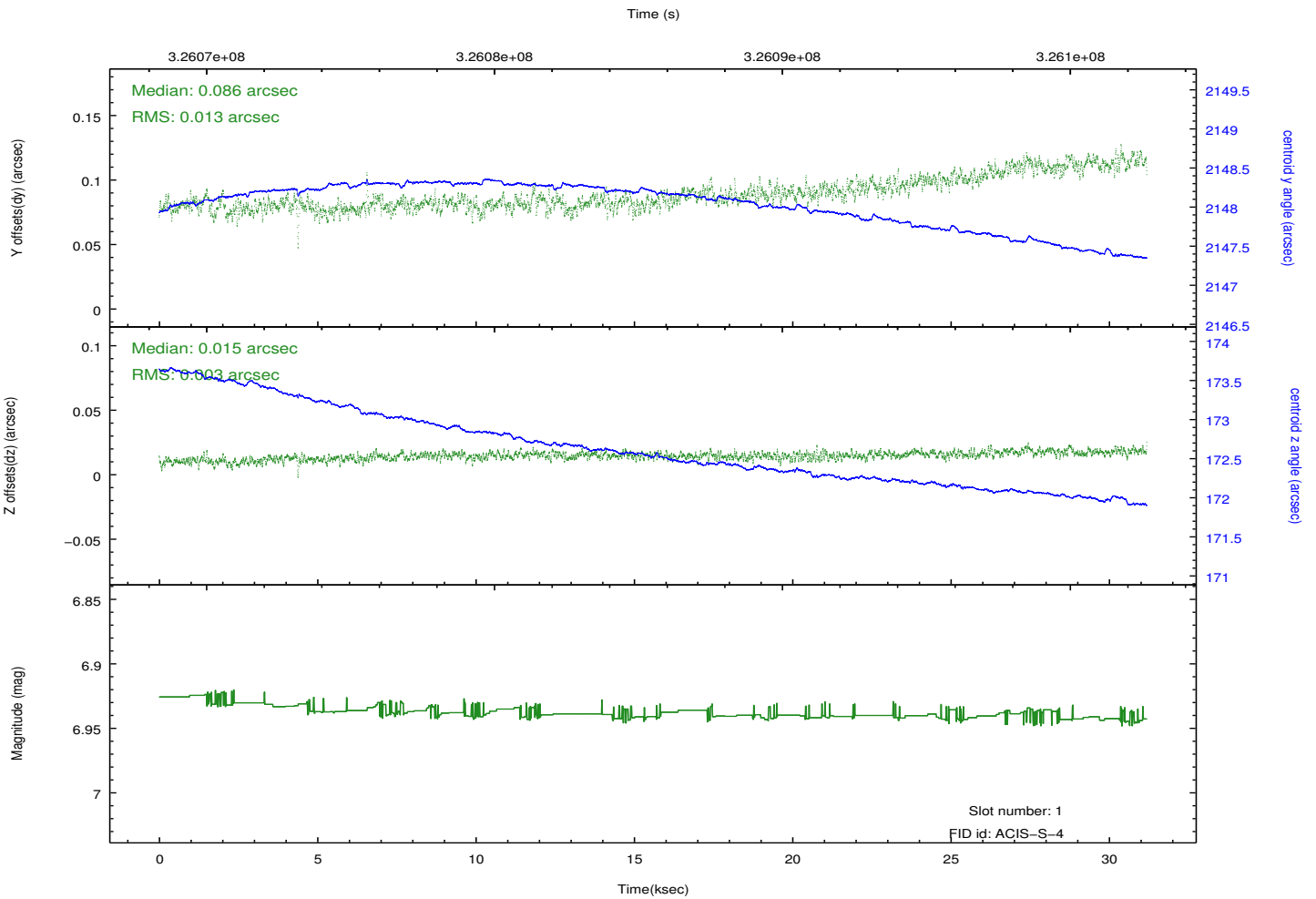
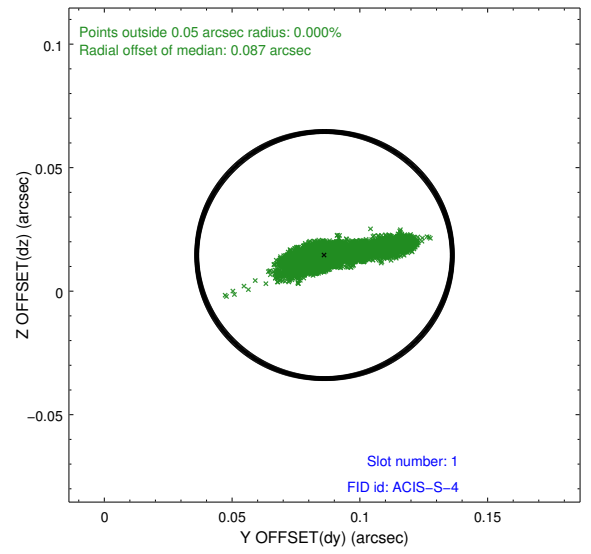
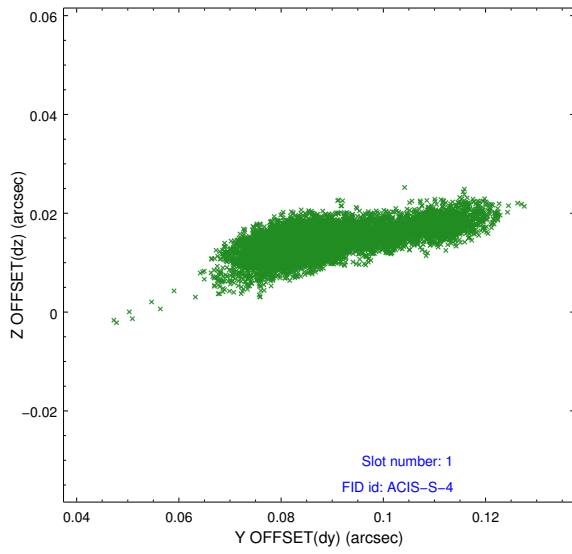


2.5 FID Slots

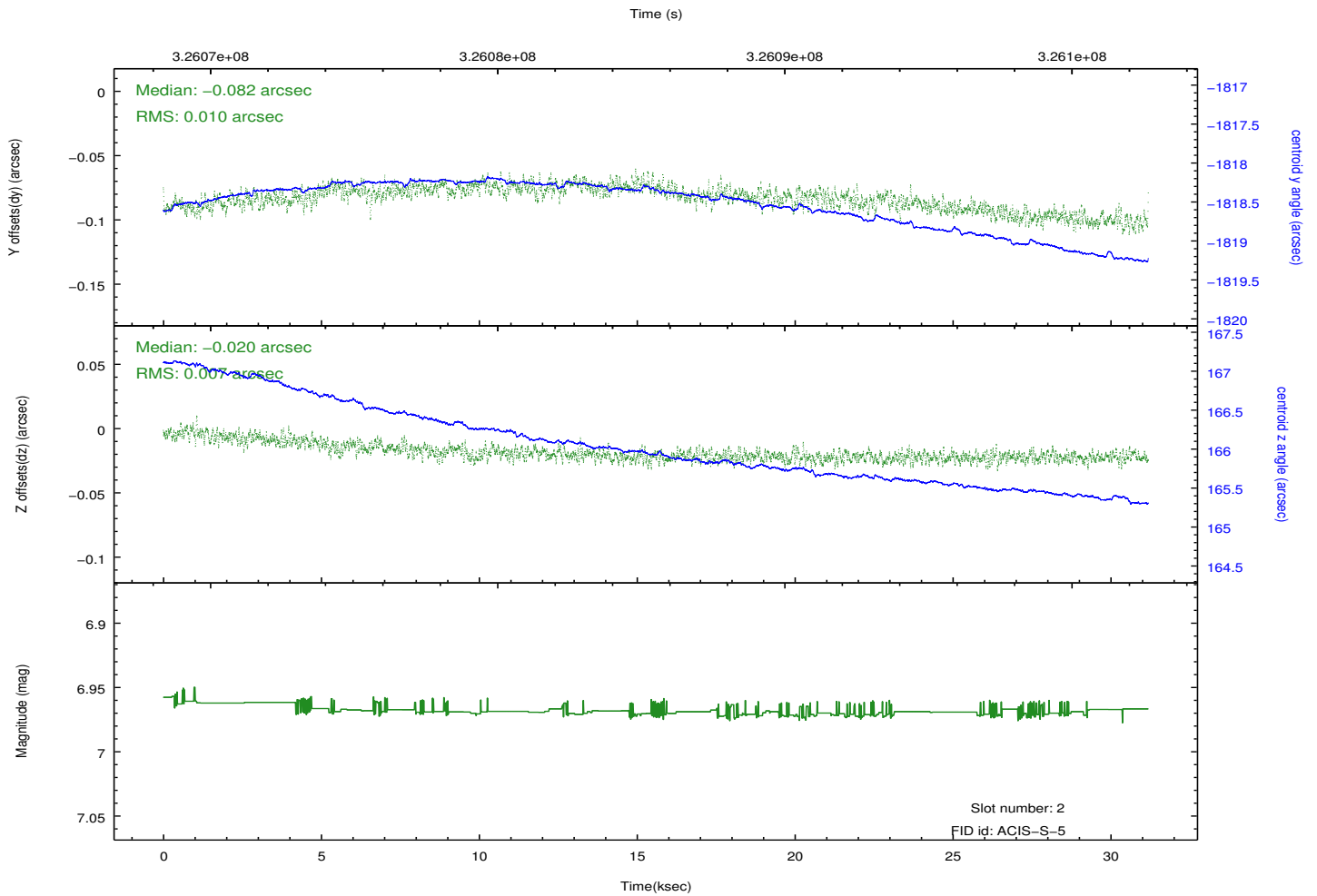
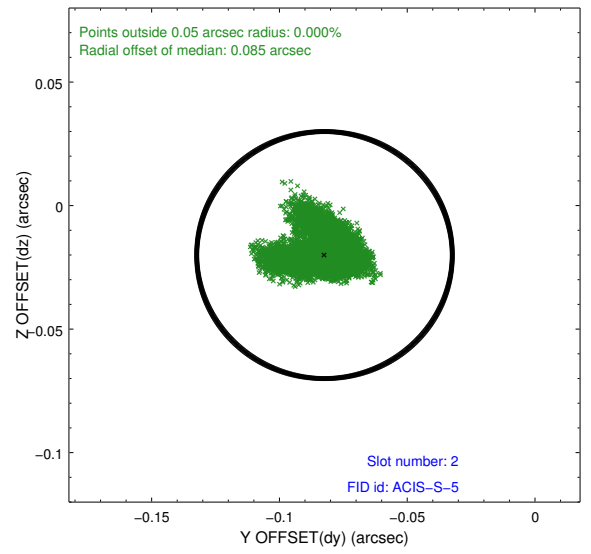
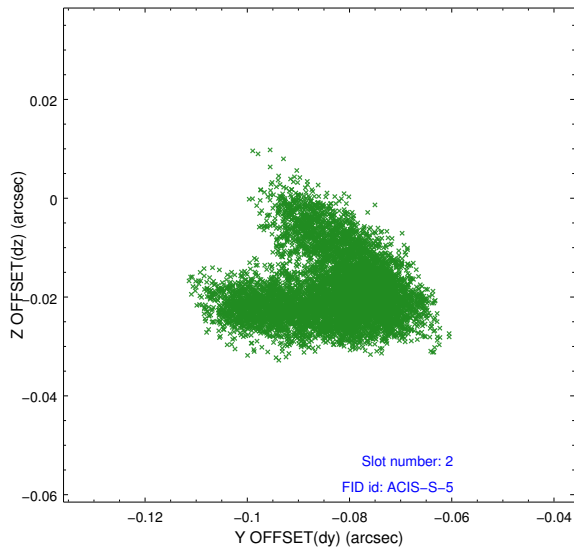
2.5.1 Slot 0



2.5.2 Slot 1



2.5.3 Slot 2



A Summary

A.1 Status

V&V Scientist	Beth Sundheim
V&V Date (YYYY-MM-DD)	2012.05.16
V&V Edition	1
V&V Disposition and Status	OK
V&V Charge Time	31.1829002

A.2 Comments