

V&V Reference Report

L2 ASCDS Version : 8.4.5

Observation 10122 - L2 Version 2
Chandra X-Ray Center

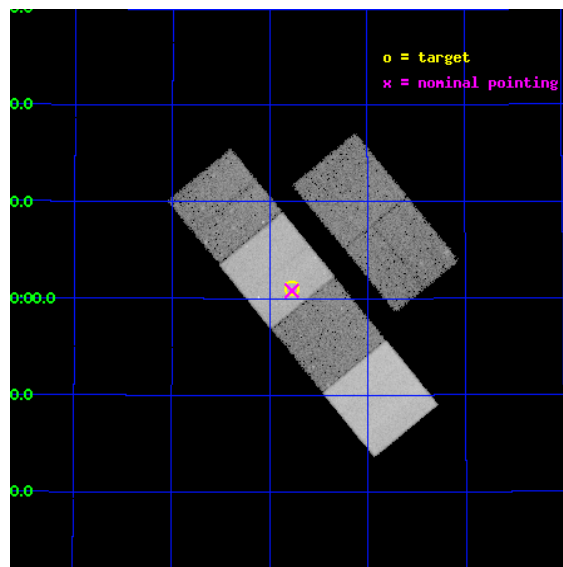
L2 Processing Date : Jun 8 2012

Contents

1	Front	2
2	OBI	3
2.1	OBI	3
2.1.1	Images	3
2.1.2	Bias	3
2.1.3	Parameters	4
2.1.4	Events	4
2.2	Compared Parameters	5
2.3	Aspect	6
2.4	Star Slots	9
2.4.1	Slot 3	9
2.4.2	Slot 4	10
2.4.3	Slot 5	11
2.4.4	Slot 6	12
2.4.5	Slot 7	13
2.5	FID Slots	14
2.5.1	Slot 0	14
2.5.2	Slot 1	15
2.5.3	Slot 2	16
A	Summary	17
A.1	Status	17
A.2	Comments	17

1 Front

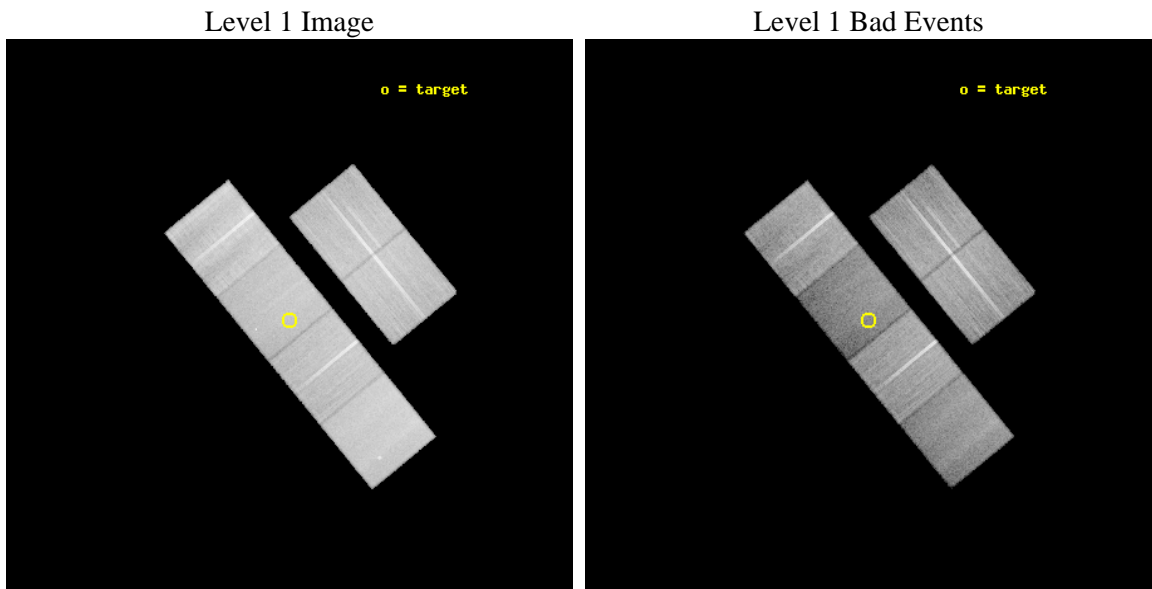
seq_num	501049	Sequence number
obs_id	10122	Observation id
title	An In-Depth Study of the Nearest Gamma-Ray Bursts	Proposal title
observer	Prof Alicia Soderberg	Principal investigator
object	GRB090417B	Source name
dtycycle	0	
cycle	P	events from which exps? Prim/Second/Both
ra_targ	209.6943	Observer's specified target RA [deg]
dec_targ	47.0182	Observer's specified target Dec [deg]
ra_nom	209.69336650146	Nominal RA [deg]
dec_nom	47.013408752235	Nominal Dec [deg]
roll_nom	230.65731873866	Nominal Roll [deg]
revision	2	Processing version of data
ontime	27538.690391839	Sum of GTIs [s]
livetime	27189.978912289	Livetime [s]
ontime2	27538.731431842	Sum of GTIs [s]
ontime3	27532.085400701	Sum of GTIs [s]
ontime5	27538.649351835	Sum of GTIs [s]
ontime6	27532.12633121	Sum of GTIs [s]
ontime7	27538.690391839	Sum of GTIs [s]
ontime8	27538.526231825	Sum of GTIs [s]
l2events	324383	Number of level 2 events



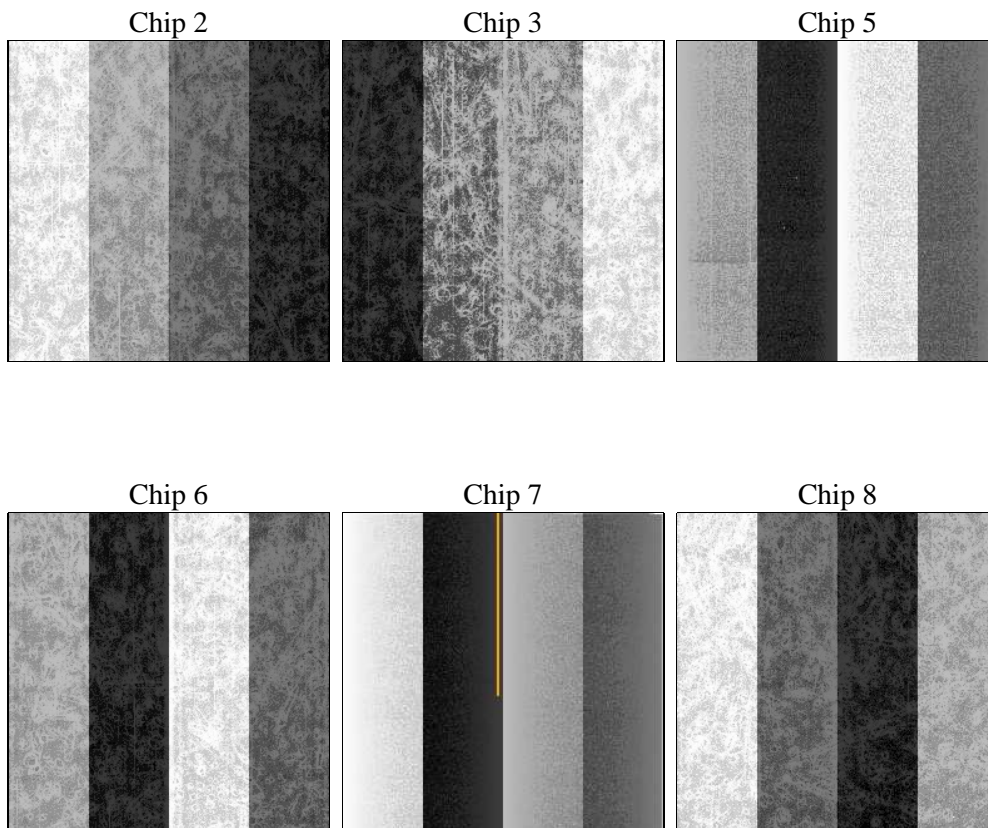
2 OBI

2.1 OBI

2.1.1 Images



2.1.2 Bias



2.1.3 Parameters

obi_num	0	Obi number	sched_exp_time	27500.000000	[s] Scheduled observation exposure time
ascdsver	8.4.5	Processing system revision	ontime	27538.690391839	Sum of GTIs [s]
caldbver	4.4.10	 	ontime2	27538.731431842	Sum of GTIs [s]
date	2012-06-08T20:29:10	Date and time of file creation	ontime3	27532.085400701	Sum of GTIs [s]
revision	2	Processing version of data	ontime5	27538.649351835	Sum of GTIs [s]
			ontime6	27532.12633121	Sum of GTIs [s]
			ontime7	27538.690391839	Sum of GTIs [s]
			ontime8	27538.526231825	Sum of GTIs [s]
			l1events	1470680	Number of level 1 events

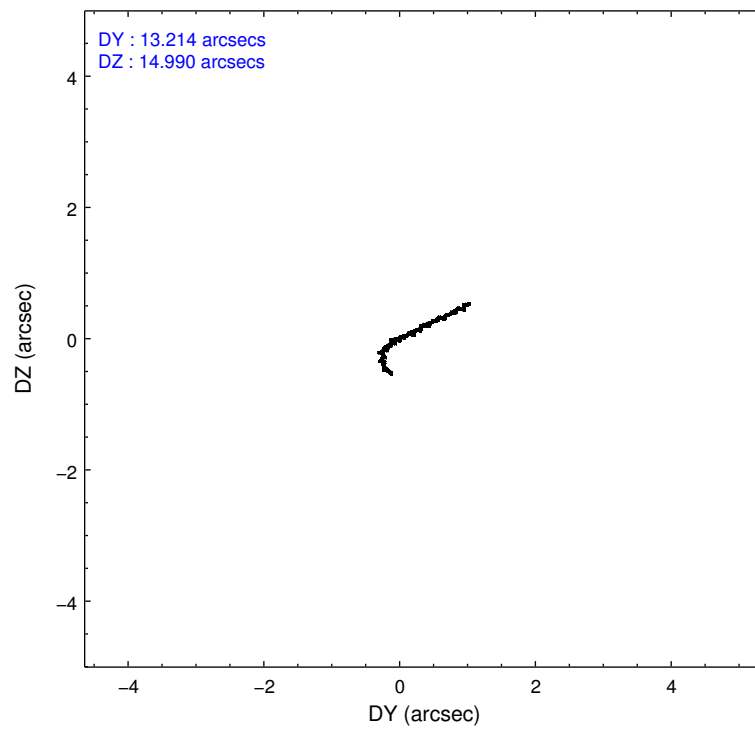
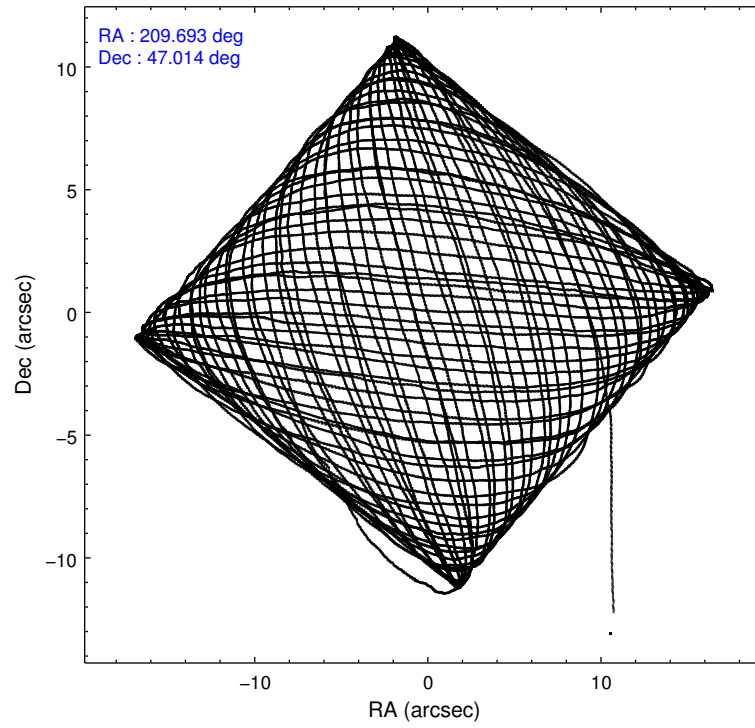
2.1.4 Events

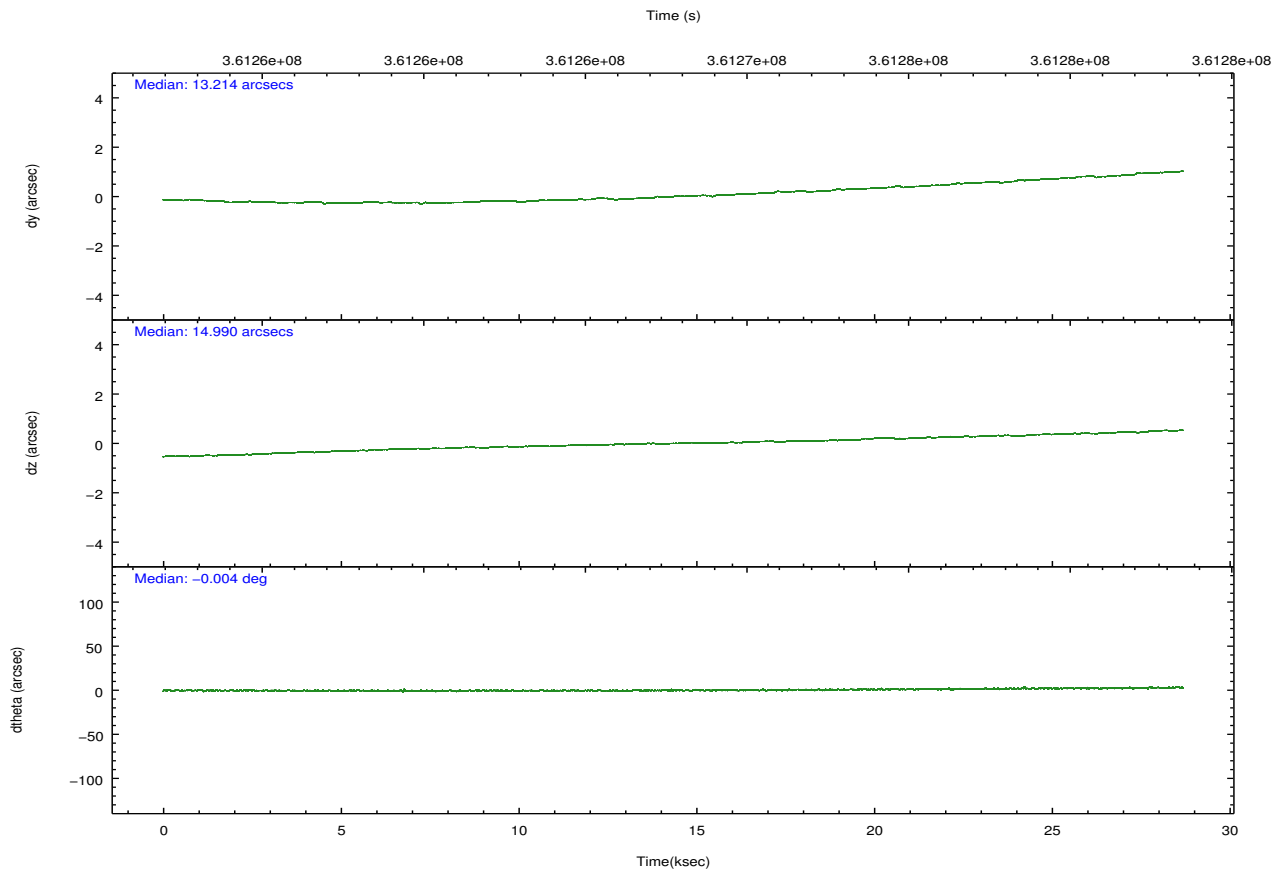
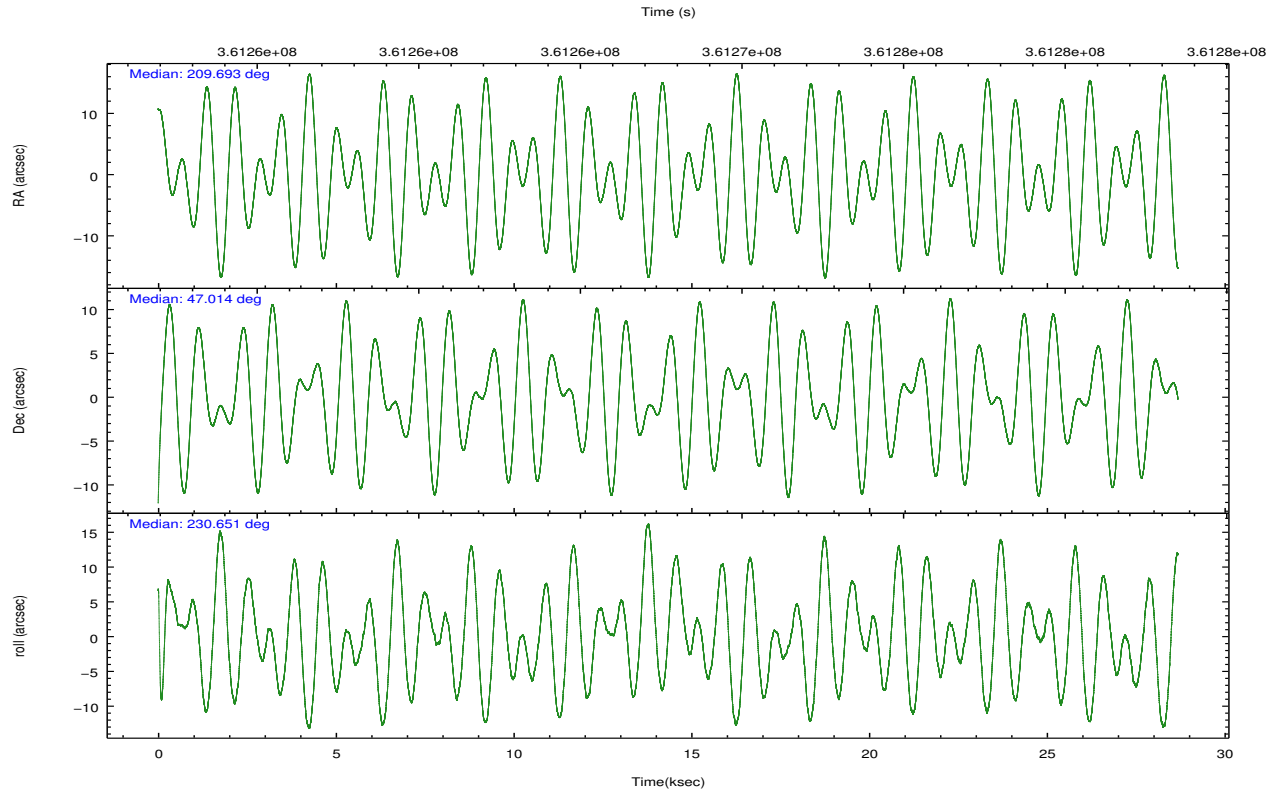
	ccd 2	ccd 3	ccd 5	ccd 6	ccd 7	ccd 8		ccd 2	ccd 3	ccd 5	ccd 6	ccd 7	ccd 8
level 1 events	235998	227421	282413	224905	219835	280108	grade 0 events	8164	7694	10711	8482	11270	19886
rejected events	213915	206619	136347	201913	111089	207227		3%	3%	3%	3%	5%	7%
rejected %	90%	90%	48%	89%	50%	73%	grade 1 events	163	134	725	127	345	250
								0%	0%	0%	0%	0%	0%
							grade 2 events	5420	4542	46019	5232	23229	17586
								2%	1%	16%	2%	10%	6%
							grade 3 events	2219	2337	6213	2359	9973	7776
								0%	1%	2%	1%	4%	2%
							grade 4 events	2331	2248	5942	2403	9864	7220
								0%	0%	2%	1%	4%	2%
							grade 5 events	6587	7800	22541	7739	23483	12098
								2%	3%	7%	3%	10%	4%
							grade 6 events	3950	3982	77222	4523	54423	20418
								1%	1%	27%	2%	24%	7%
							grade 7 events	207164	198684	113040	194040	87248	194874
								87%	87%	40%	86%	39%	69%

2.2 Compared Parameters

Parameter	Planned	Actual	Parameter	Planned	Actual
Instrument	ACIS	ACIS	Obspar format version number	7	7
Detector	ACIS-235678	ACIS-235678	Obspar file type	PREDICTED	ACTUAL
Grating	NONE	NONE	Obspar update status	NONE	UPDATED
Data mode	VFAINT	VFAINT	CCD I0 on	N	N
Observation mode	POINTING	POINTING	CCD I1 on	N	N
[deg] Pointing RA	209.699329	209.693366501462	CCD I2 on	O1	Y
[deg] Pointing Dec	47.040426	47.0134087522355	CCD I3 on	O2	Y
[deg] Pointing Roll	230.496326	230.6573187386564	CCD S0 on	N	N
[s] Window start time (MET)	360460866.184000	360460866.184000	CCD S1 on	Y	Y
[s] Window stop time (MET)	361411266.184000	361411266.184000	CCD S2 on	Y	Y
[mm] SIM focus pos	-0.684267	-0.6828225247311905	CCD S3 on	Y	Y
[mm] SIM defocus	0	0.001444936568705701	CCD S4 on	Y	Y
[mm] SIM translation stage pos	-190.132523	-190.1400660498719	CCD S5 on	N	N
[mm] SIM translation stage offset	0	0.00754346686406393	Number of optional ACIS chips dropped	0	0
[s] Observation start time (MET)	361254549.184000	361252560.18565	On-chip summing requested	N	N
Observation start date	2009-06-13T04:28:03	2009-06-13T03:56:00	Subarray requested	NONE	NONE
[s] Observation end time (MET)	361282049.184000	361282702.87466	Alternating exposures requested	N	N
Observation end date	2009-06-13T12:06:23	2009-06-13T12:18:22	[s] Primary exposure time	0.000000	3.2
Read mode	TIMED	TIMED			

2.3 Aspect



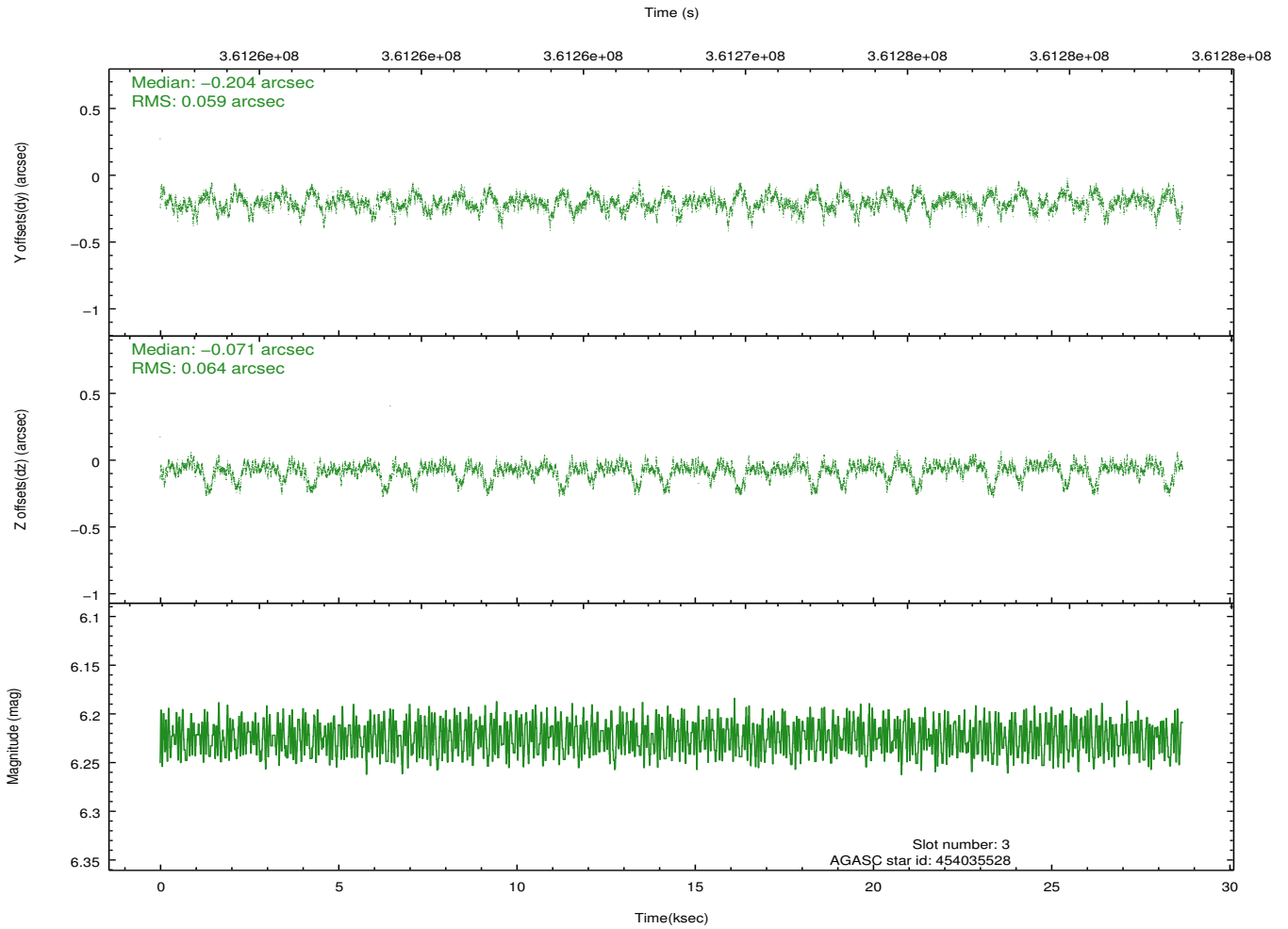
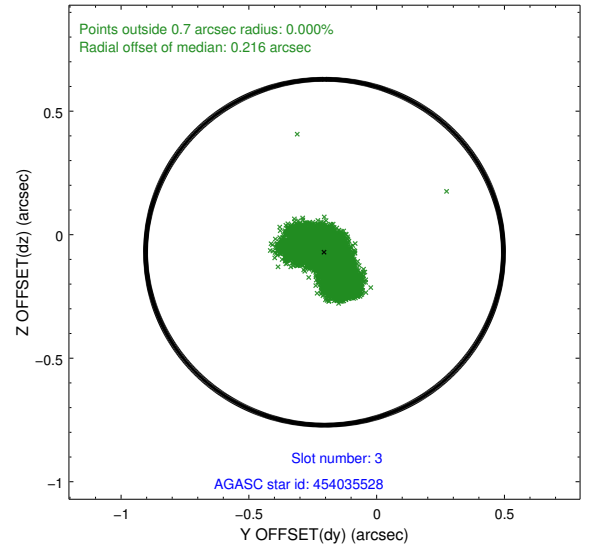
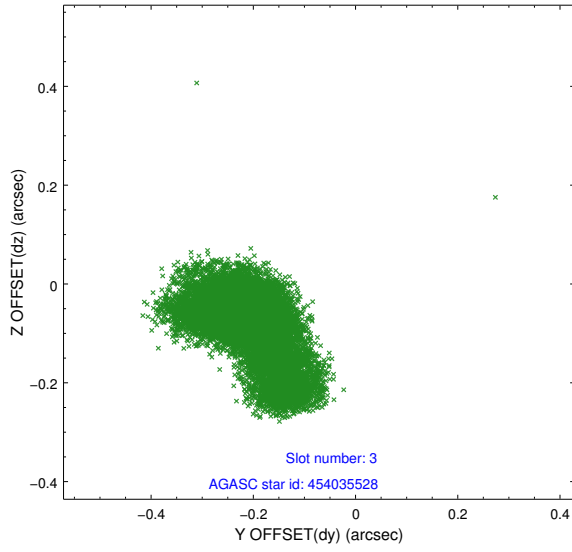


Slot Statistics

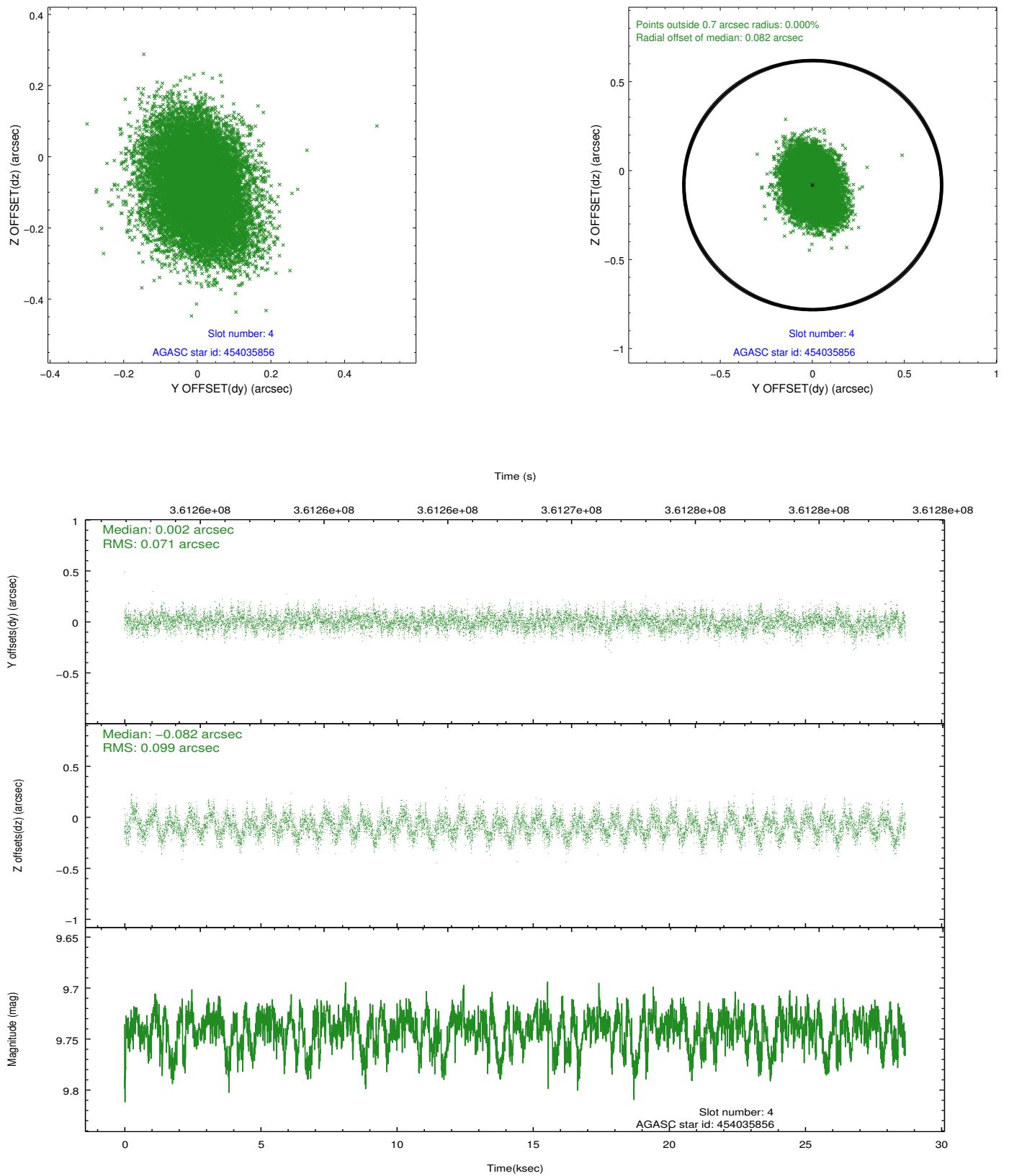
slot	status	id	mag	n_pts	med_dy	med_dz	dr1	dr2	ra	dec	mean_y	mean_z
0	FID	ACIS-S-2	6.91	6997	-0.091	-0.053	0.014	0.029	0.000000	0.000000	-766.37	-1736.42
1	FID	ACIS-S-4	7.00	6995	0.108	0.048	0.010	0.017	0.000000	0.000000	2147.07	172.08
2	FID	ACIS-S-6	7.13	6996	-0.043	0.014	0.009	0.015	0.000000	0.000000	395.77	809.53
3	GUIDE	454035528	6.22	13993	-0.204	-0.071	0.086	0.167	209.690409	46.596241	1248.11	1000.46
4	GUIDE	454035856	9.74	13971	0.002	-0.082	0.130	0.211	209.991646	47.261658	-1069.06	43.62
5	GUIDE	454036472	10.23	13970	-0.058	0.016	0.216	0.347	208.862921	47.107269	1110.19	-1741.23
6	GUIDE	454164696	9.93	13968	-0.069	0.299	0.134	0.216	210.087394	47.402180	-1607.40	-100.04
7	GUIDE	454036528	10.05	13960	0.326	-0.146	0.188	0.327	208.382496	46.921732	2369.43	-2243.04

2.4 Star Slots

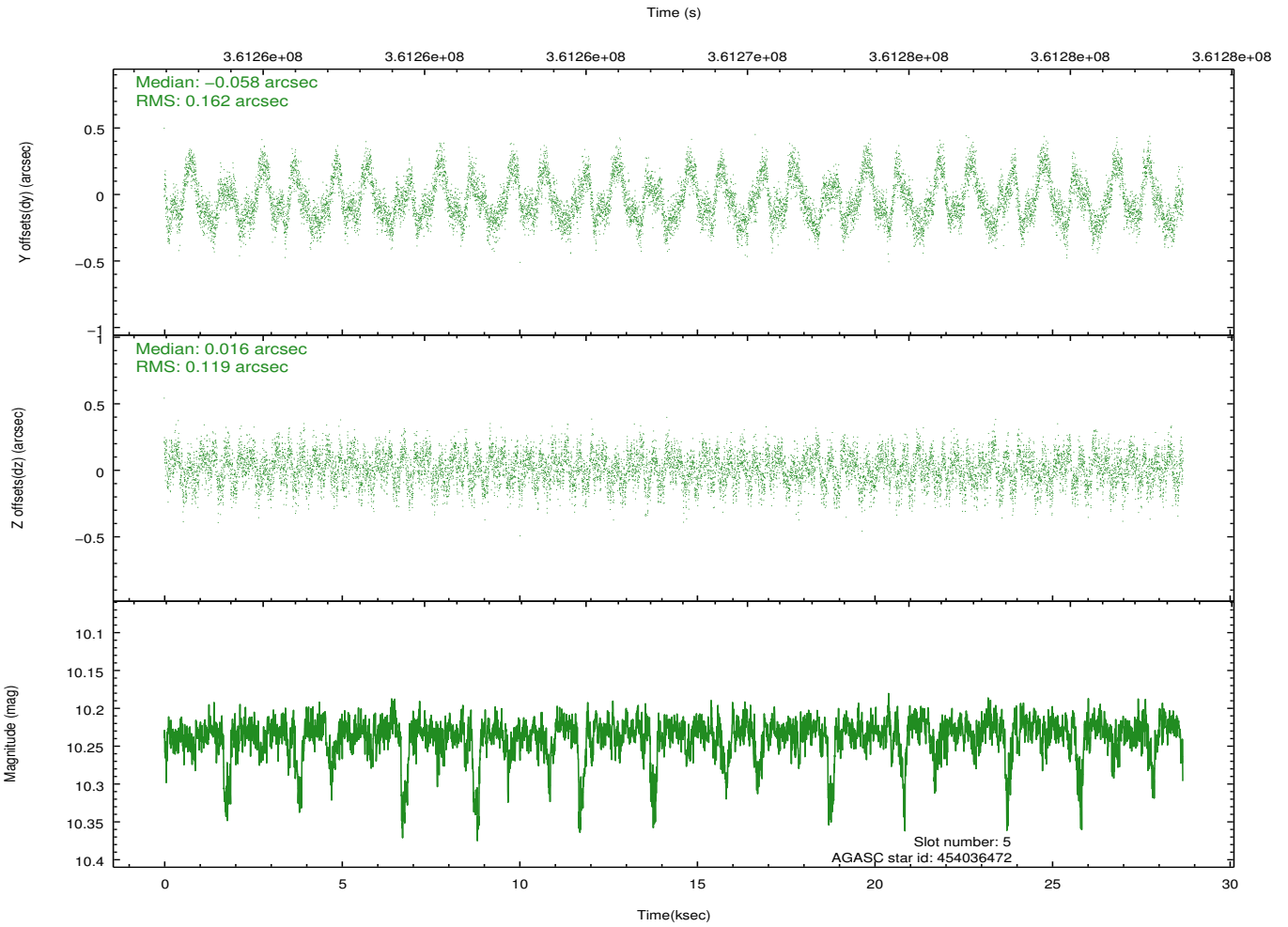
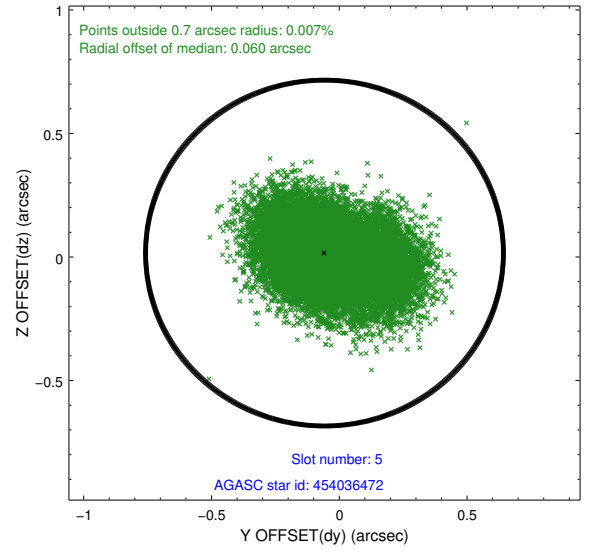
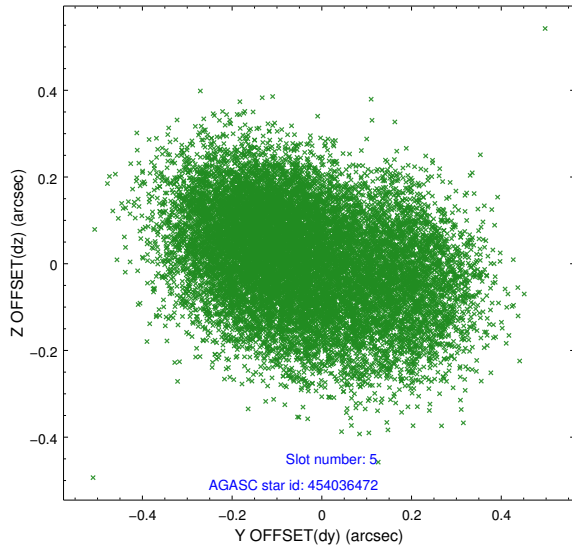
2.4.1 Slot 3



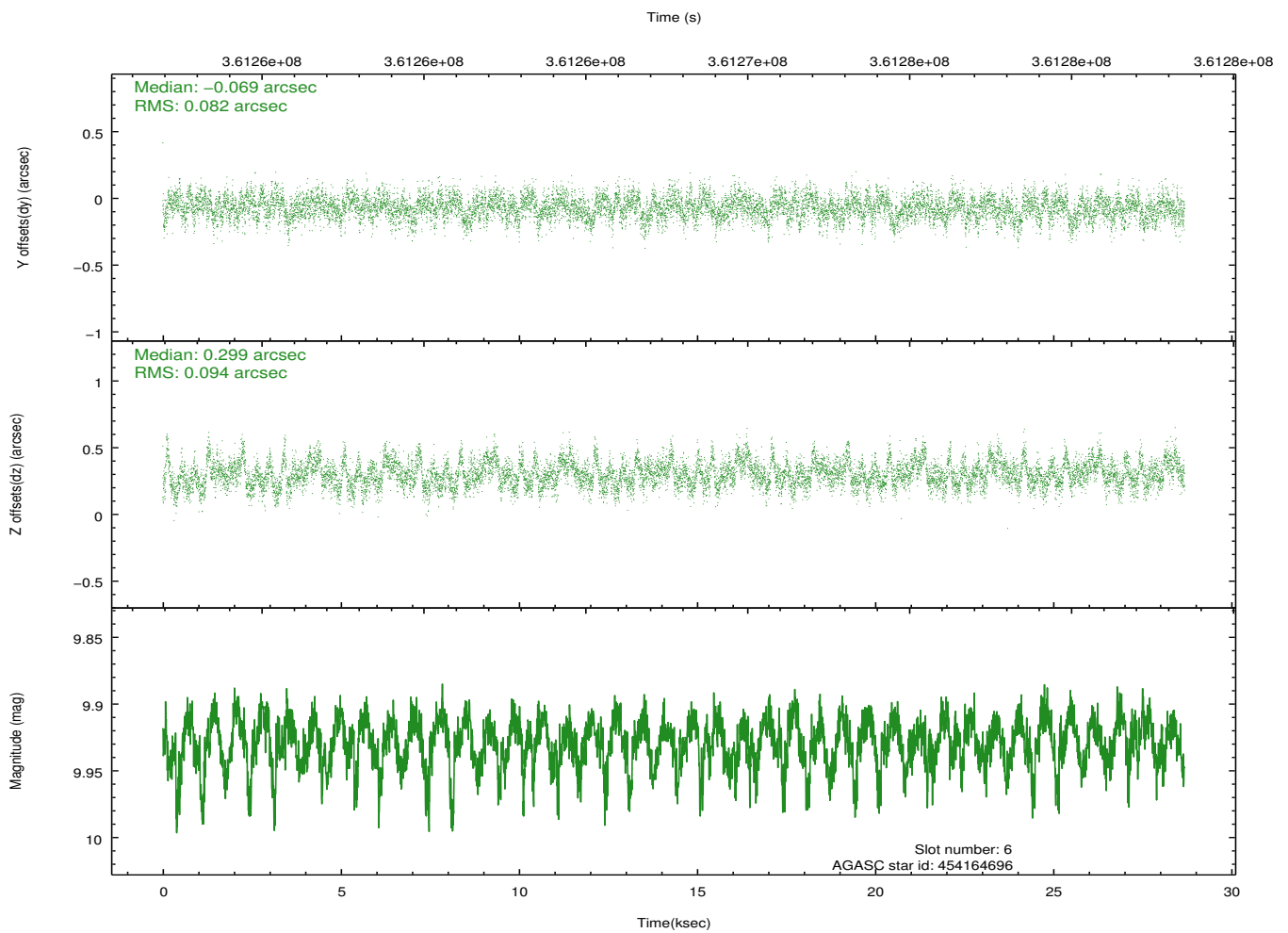
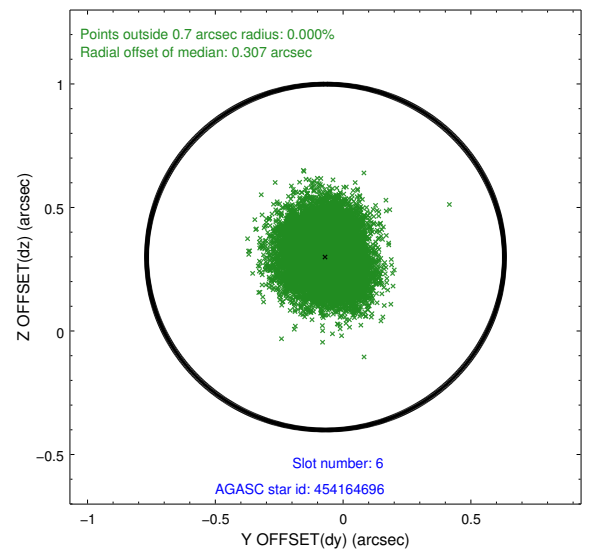
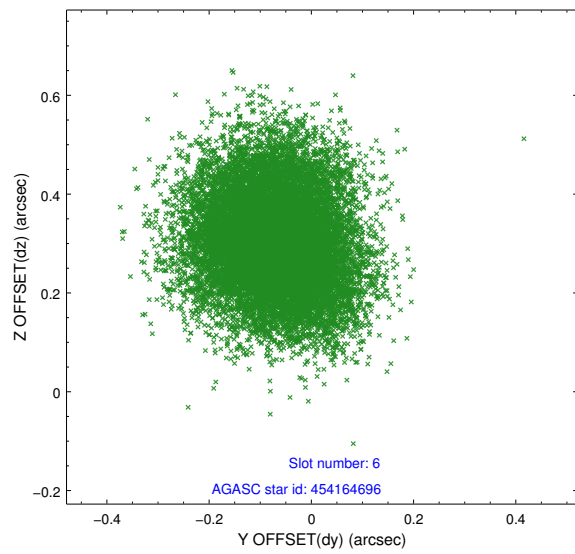
2.4.2 Slot 4



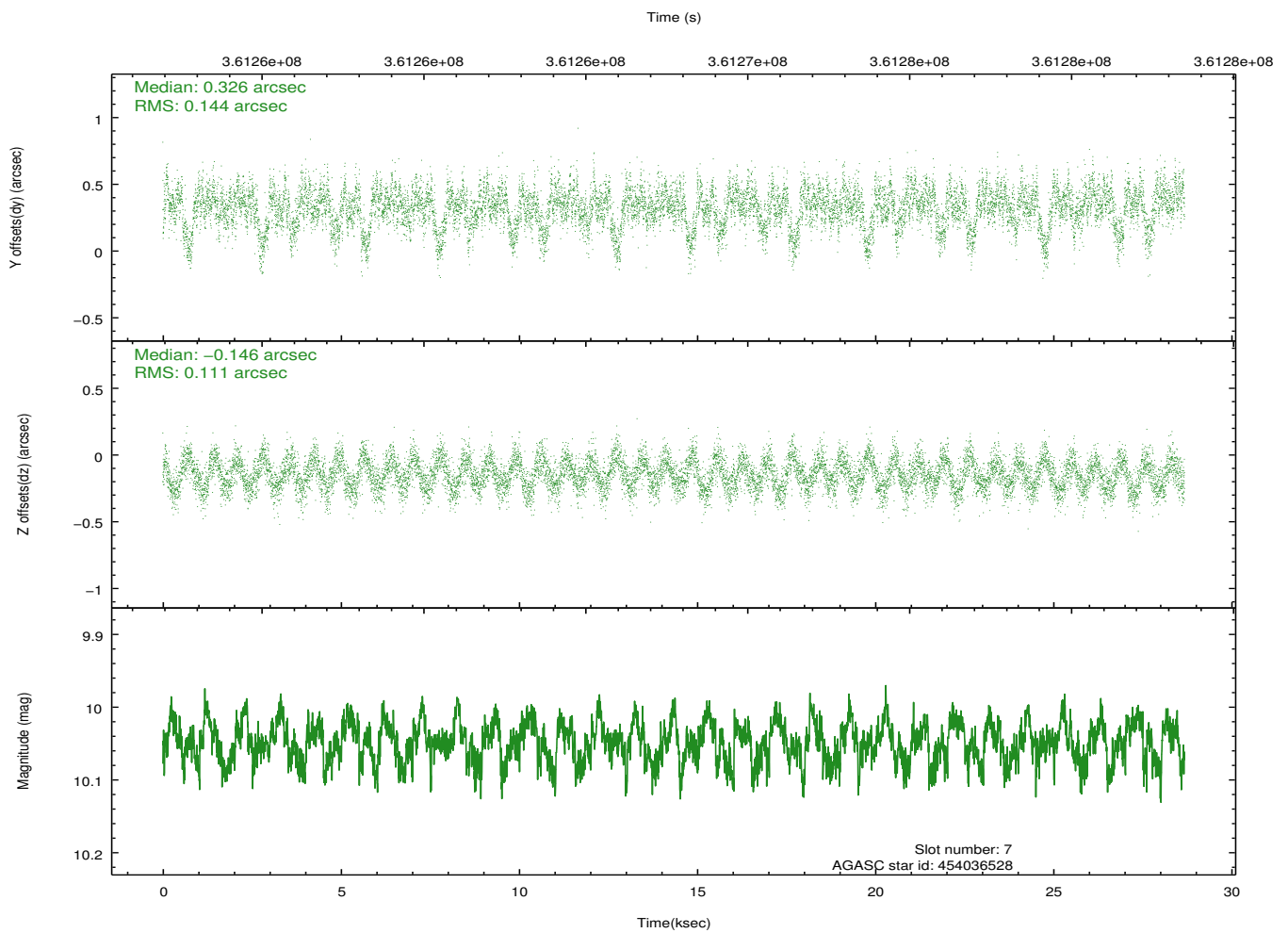
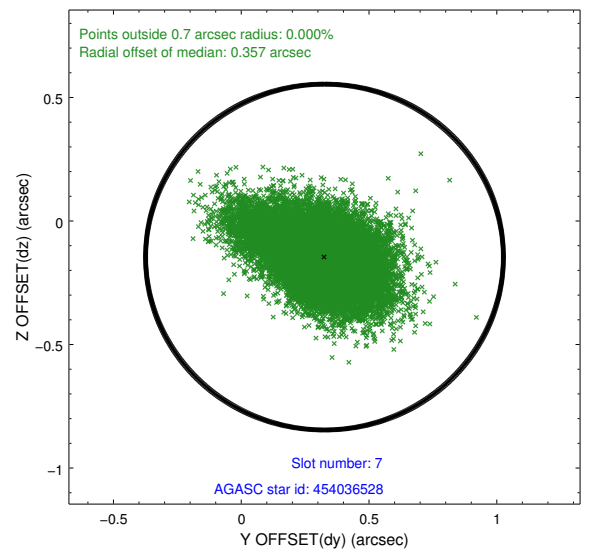
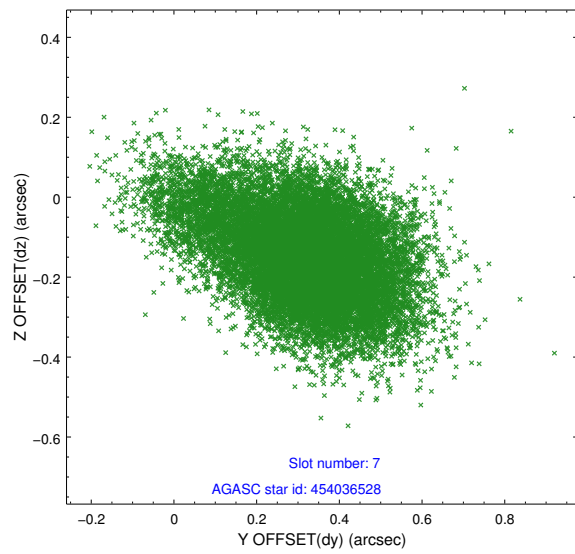
2.4.3 Slot 5



2.4.4 Slot 6

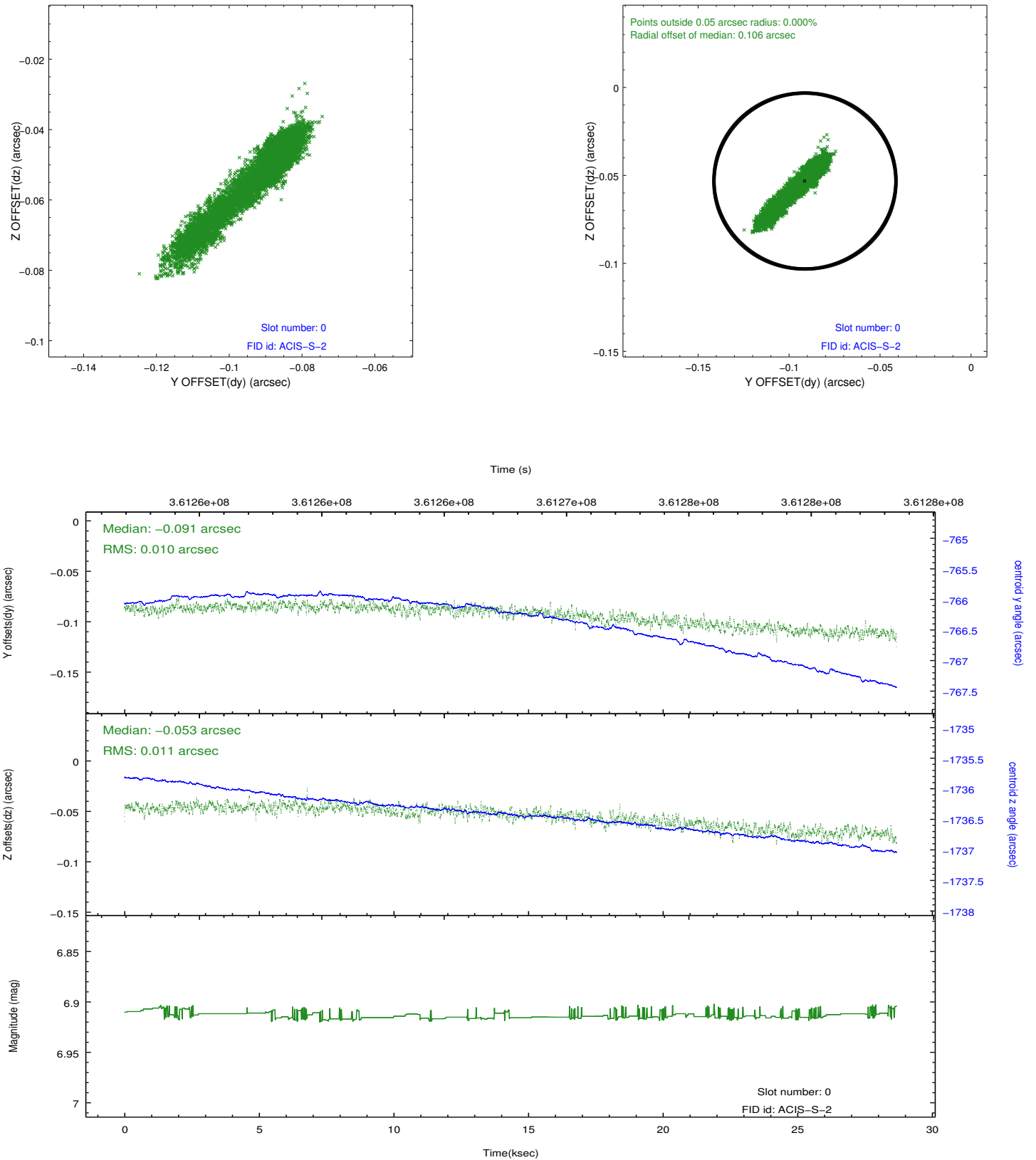


2.4.5 Slot 7

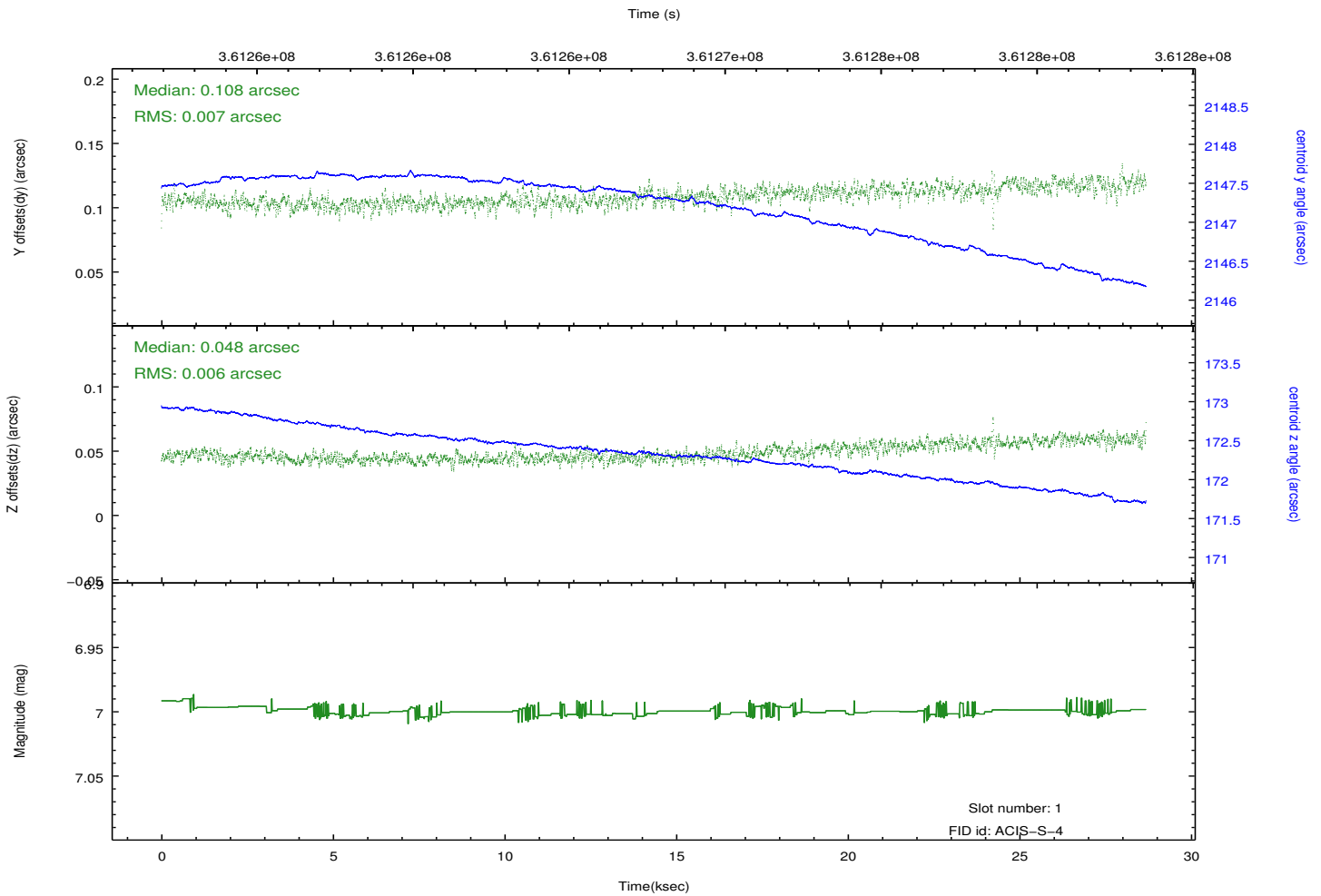
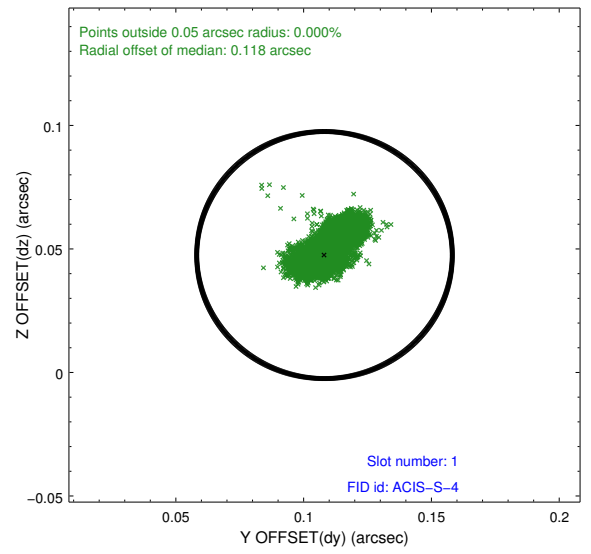
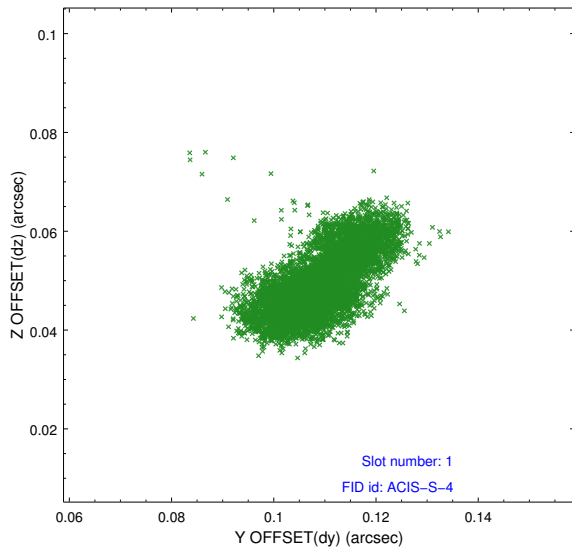


2.5 FID Slots

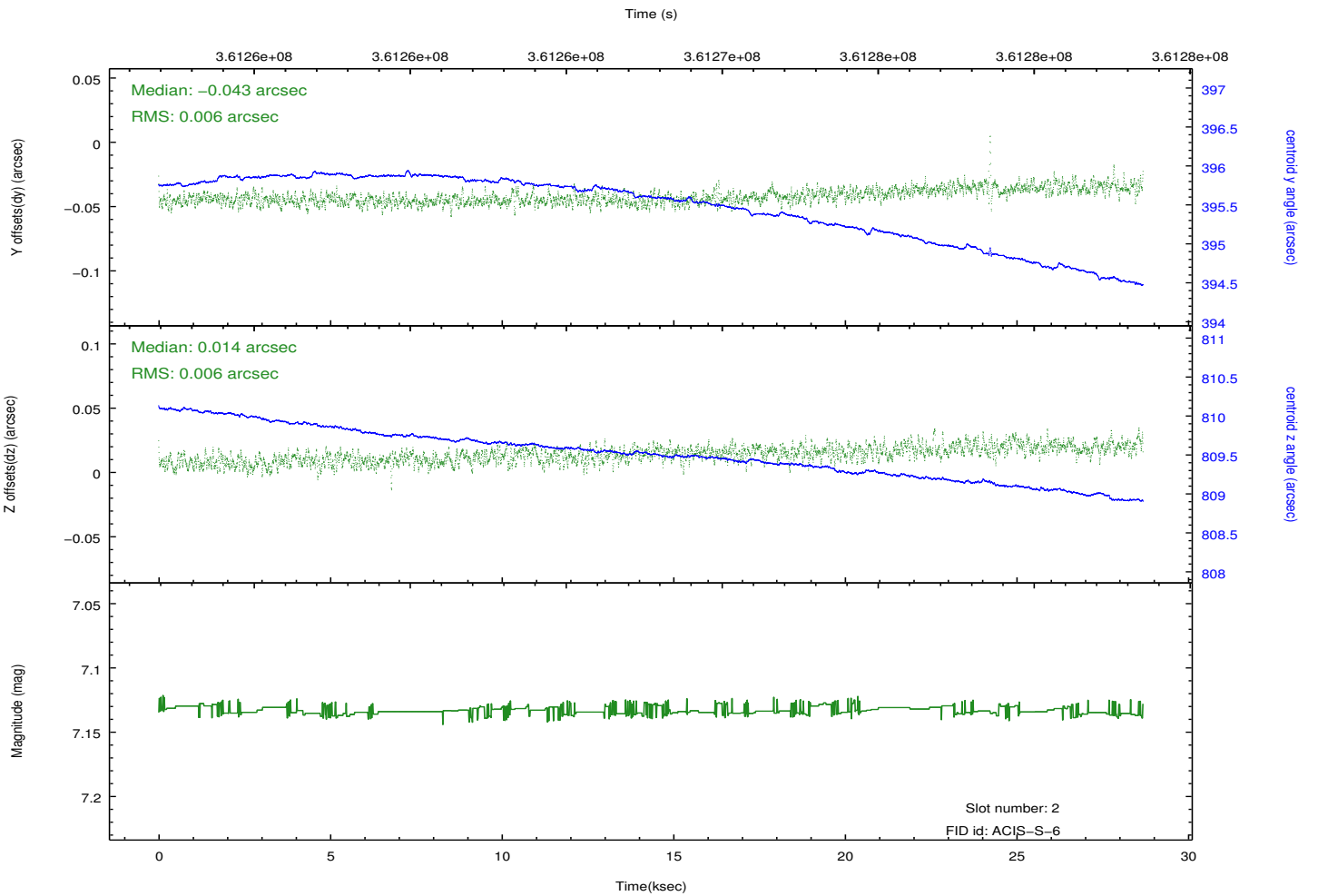
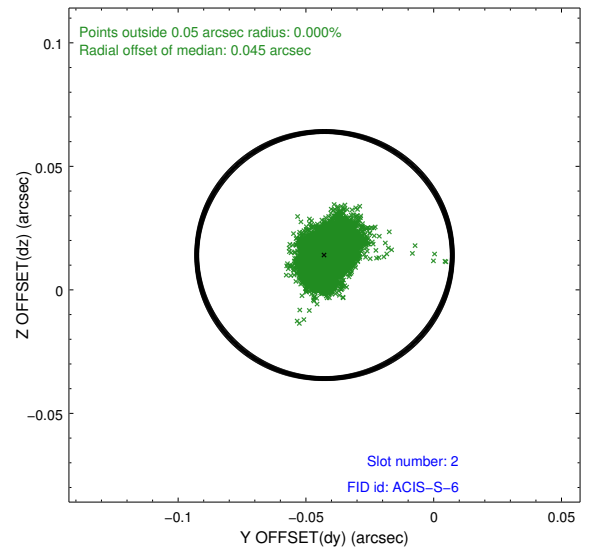
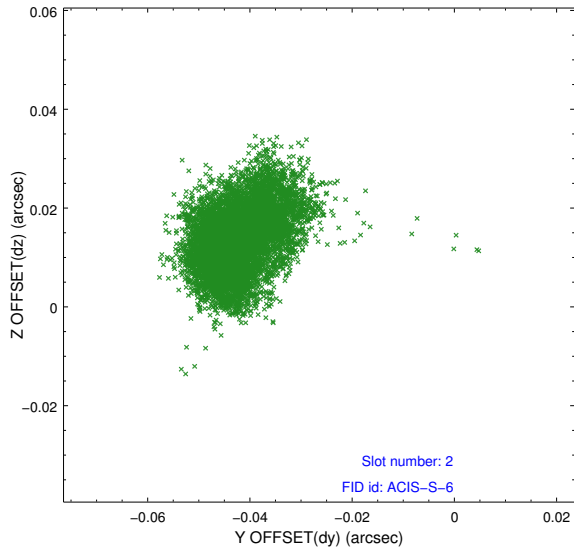
2.5.1 Slot 0



2.5.2 Slot 1



2.5.3 Slot 2



A Summary

A.1 Status

V&V Scientist	Beth Sundheim
V&V Date (YYYY-MM-DD)	2012.06.12
V&V Edition	1
V&V Disposition and Status	OK
V&V Charge Time	27.5391998

A.2 Comments

Window preference met.