

V&V Reference Report

L2 ASCDS Version : 8.4.4

Observation 10252 - L2 Version 2
Chandra X-Ray Center

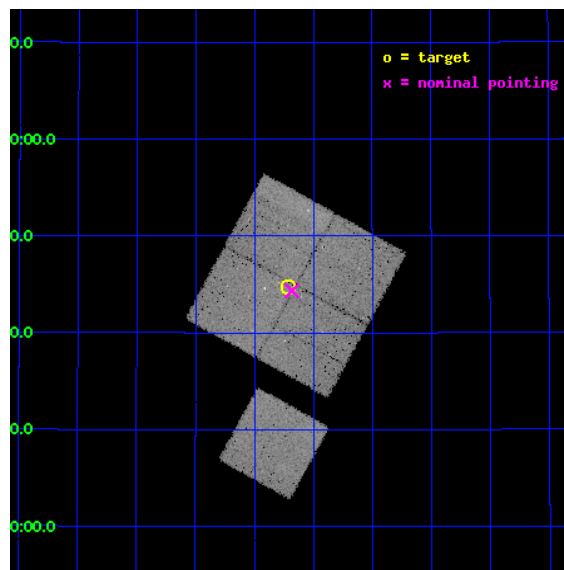
L2 Processing Date : Jun 2 2012

Contents

1	Front	2
2	OBI	3
2.1	OBI	3
2.1.1	Images	3
2.1.2	Bias	3
2.1.3	Parameters	4
2.1.4	Events	4
2.2	Compared Parameters	5
2.3	Aspect	6
2.4	Star Slots	9
2.4.1	Slot 3	9
2.4.2	Slot 4	10
2.4.3	Slot 5	11
2.4.4	Slot 6	12
2.4.5	Slot 7	13
2.5	FID Slots	14
2.5.1	Slot 0	14
2.5.2	Slot 1	15
2.5.3	Slot 2	16
A	Summary	17
A.1	Status	17
A.2	Comments	17

1 Front

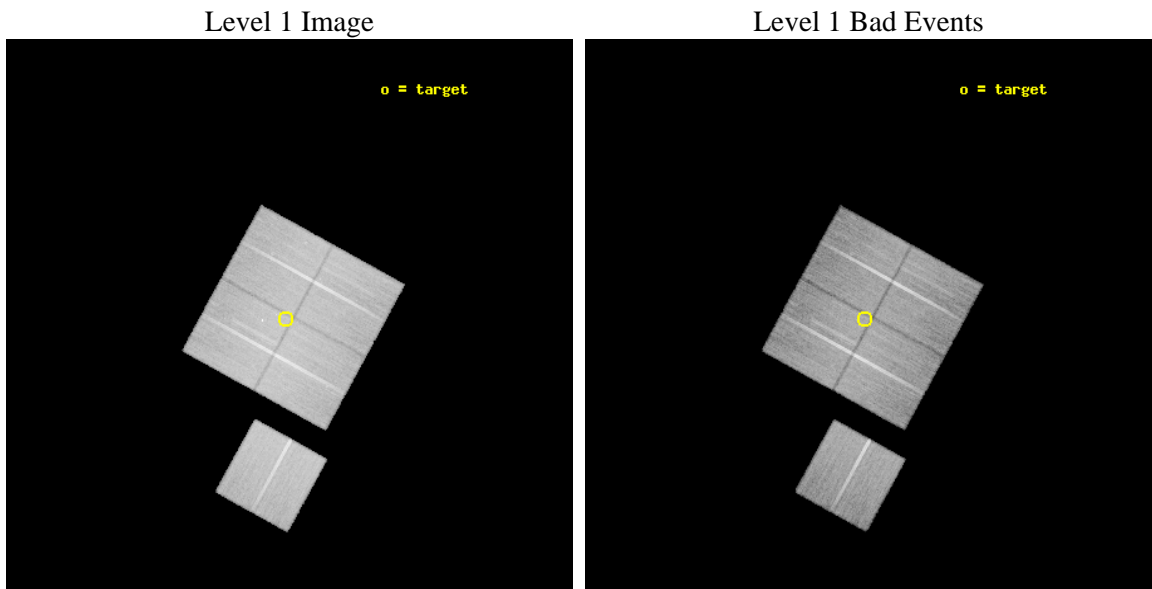
seq_num	701795	Sequence number
obs_id	10252	Observation id
title	The multi-faceted X-ray activity of low-redshift active galaxies	P
observer	Prof Mark Birkinshaw	Principal investigator
object	3C 236 E	Source name
dtcycle	0	
cycle	P	events from which exps? Prim/Second/Both
ra_targ	151.8025	Observer's specified target RA [deg]
dec_targ	34.744833	Observer's specified target Dec [deg]
ra_nom	151.79567123808	Nominal RA [deg]
dec_nom	34.739025182175	Nominal Dec [deg]
roll_nom	208.78921009313	Nominal Roll [deg]
revision	2	Processing version of data
ontime	30172.218191683	Sum of GTIs [s]
livetime	29777.995948545	Livetime [s]
ontime0	30172.218201518	Sum of GTIs [s]
ontime1	30159.654200256	Sum of GTIs [s]
ontime2	30175.359221876	Sum of GTIs [s]
ontime3	30172.218191683	Sum of GTIs [s]
ontime6	30178.5002321	Sum of GTIs [s]
l2events	113124	Number of level 2 events



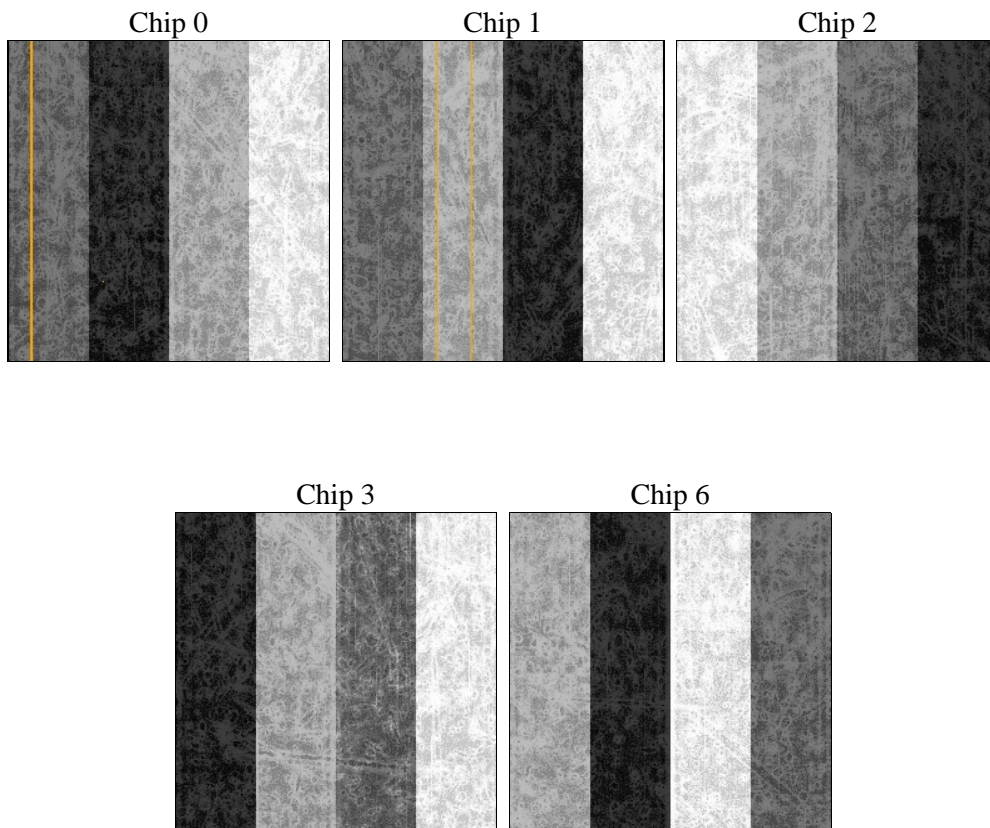
2 OBI

2.1 OBI

2.1.1 Images



2.1.2 Bias



2.1.3 Parameters

obi_num	0	Obi number	sched_exp_time	30000.000000	[s] Scheduled observation exposure time
ascdsver	8.4.4	Processing system revision	ontime	30172.218191683	Sum of GTIs [s]
caldbver	4.4.9	 	ontime0	30172.218201518	Sum of GTIs [s]
date	2012-06-02T00:04:08	Date and time of file creation	ontime1	30159.654200256	Sum of GTIs [s]
revision	2	Processing version of data	ontime2	30175.359221876	Sum of GTIs [s]
			ontime3	30172.218191683	Sum of GTIs [s]
			ontime6	30178.5002321	Sum of GTIs [s]
			l1events	1313630	Number of level 1 events

2.1.4 Events

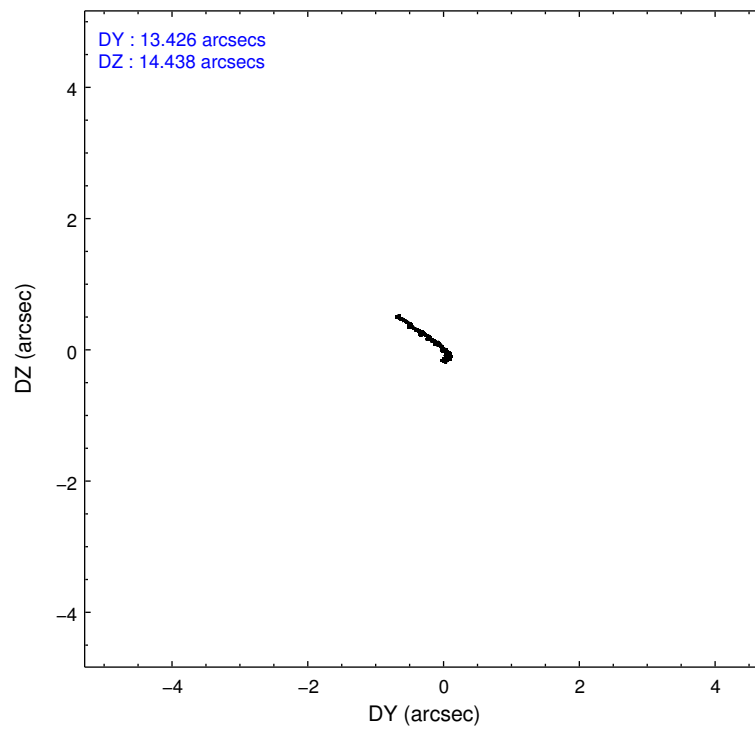
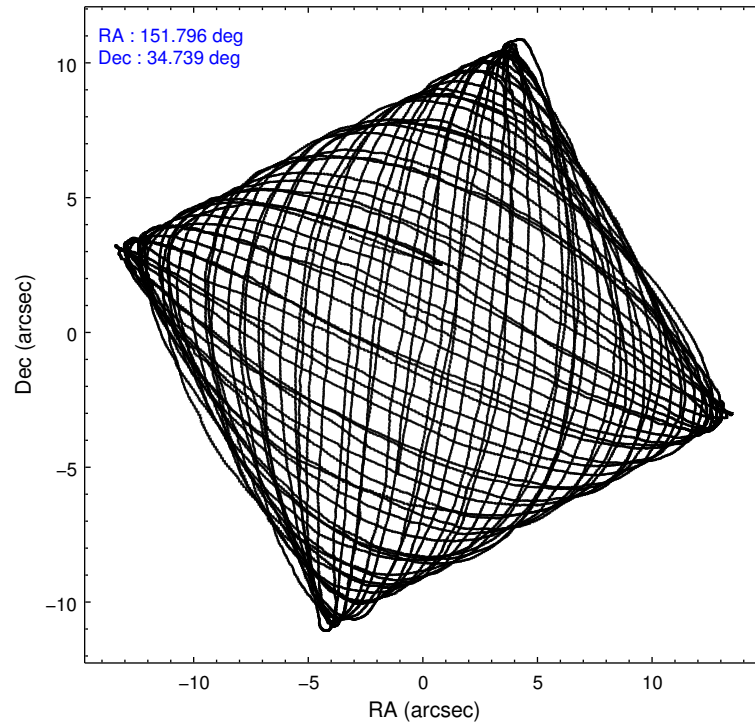
	ccd 0	ccd 1	ccd 2	ccd 3	ccd 6
level 1 events	251791	250874	276694	267783	266488
rejected events	225132	220941	250606	241554	239703
rejected %	89%	88%	90%	90%	89%

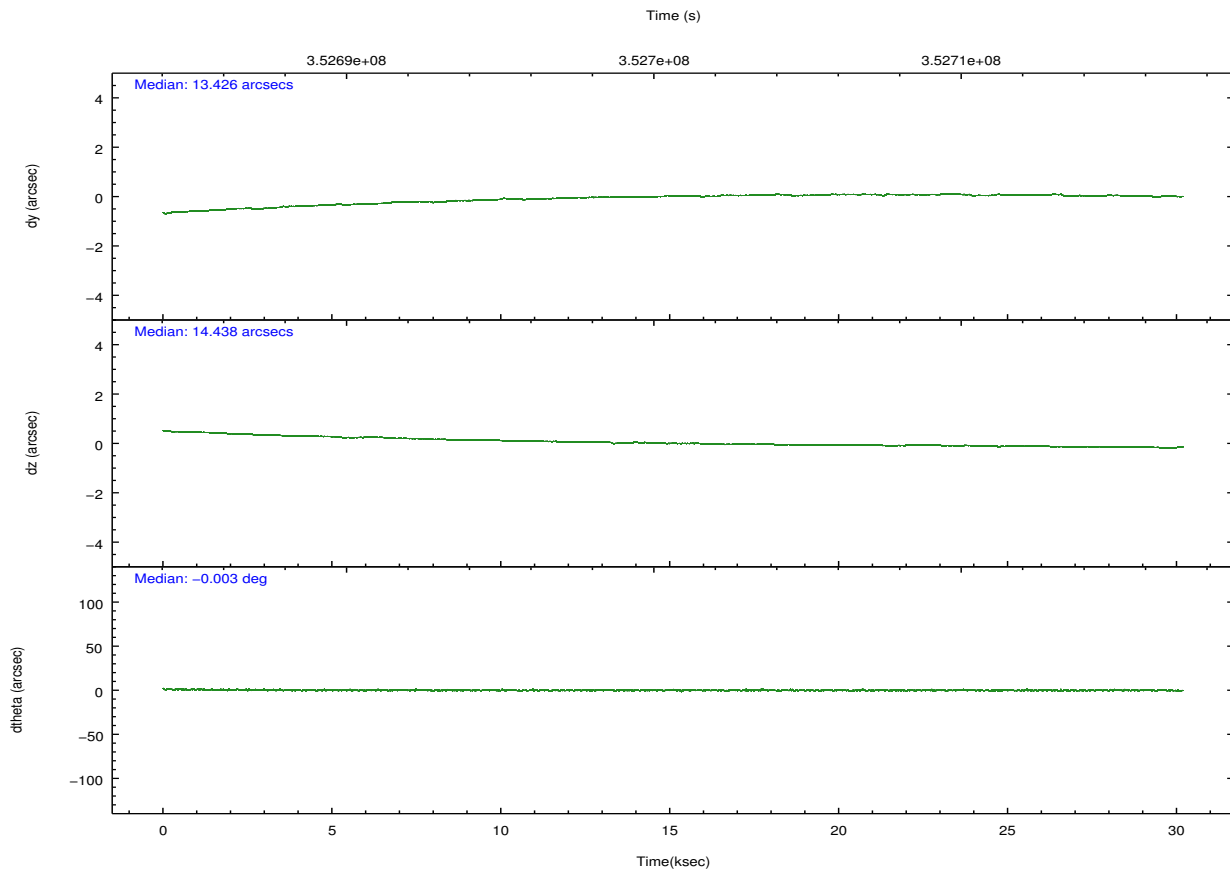
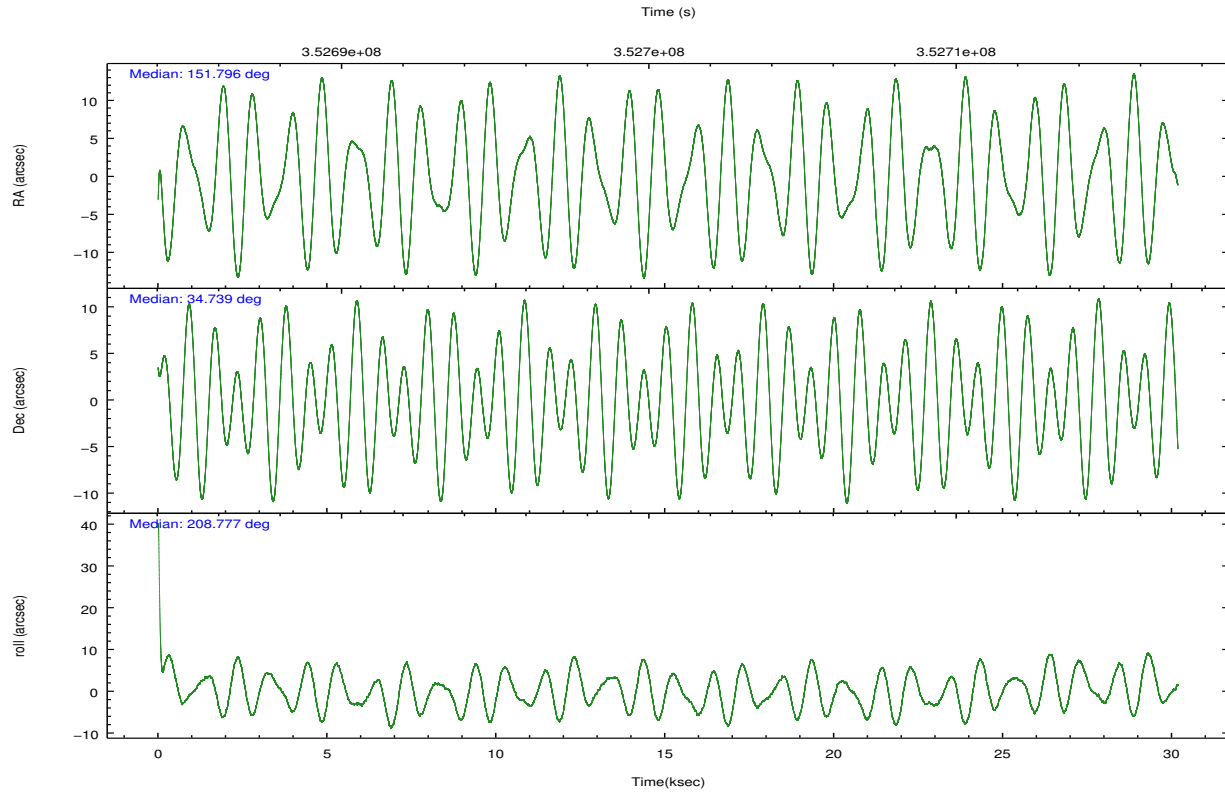
	ccd 0	ccd 1	ccd 2	ccd 3	ccd 6
grade 0 events	9469	10988	9858	9983	9356
	3%	4%	3%	3%	3%
grade 1 events	147	162	162	162	136
	0%	0%	0%	0%	0%
grade 2 events	6456	7145	6290	5792	6166
	2%	2%	2%	2%	2%
grade 3 events	3141	3254	2835	2980	2970
	1%	1%	1%	1%	1%
grade 4 events	2876	3175	2805	2828	2907
	1%	1%	1%	1%	1%
grade 5 events	9891	10538	9514	11215	10796
	3%	4%	3%	4%	4%
grade 6 events	5374	6121	4935	5280	6050
	2%	2%	1%	1%	2%
grade 7 events	214437	209491	240295	229543	228107
	85%	83%	86%	85%	85%

2.2 Compared Parameters

Parameter	Planned	Actual	Parameter	Planned	Actual
Instrument	ACIS	ACIS	Obspar format version number	7	7
Detector	ACIS-01236	ACIS-01236	Obspar file type	PREDICTED	ACTUAL
Grating	NONE	NONE	Obspar update status	NONE	UPDATED
Data mode	VFAINT	VFAINT	CCD I0 on	Y	Y
Observation mode	POINTING	POINTING	CCD I1 on	Y	Y
[deg] Pointing RA	151.812911	151.7956712380838	CCD I2 on	Y	Y
[deg] Pointing Dec	34.762587	34.73902518217545	CCD I3 on	Y	Y
[deg] Pointing Roll	208.570681	208.7892100931263	CCD S0 on	N	N
[mm] SIM focus pos	-0.782348	-0.7809083437167272	CCD S1 on	N	N
[mm] SIM defocus	0	0.001439871863259334	CCD S2 on	O1	Y
[mm] SIM translation stage pos	-233.592463	-233.5874344608287	CCD S3 on	N	N
[mm] SIM translation stage offset	0	-0.005018542100998502	CCD S4 on	N	N
[s] Observation start time (MET)	352685727.184000	352684356.69664	CCD S5 on	N	N
Observation start date	2009-03-06T00:14:21	2009-03-05T23:52:36	Number of optional ACIS chips dropped	0	0
[s] Observation end time (MET)	352715727.184000	352716941.96076	On-chip summing requested	N	N
Observation end date	2009-03-06T08:34:21	2009-03-06T08:55:41	Subarray requested	NONE	NONE
Read mode	TIMED	TIMED	Alternating exposures requested	N	N
			[s] Primary exposure time	0.000000	3.1

2.3 Aspect



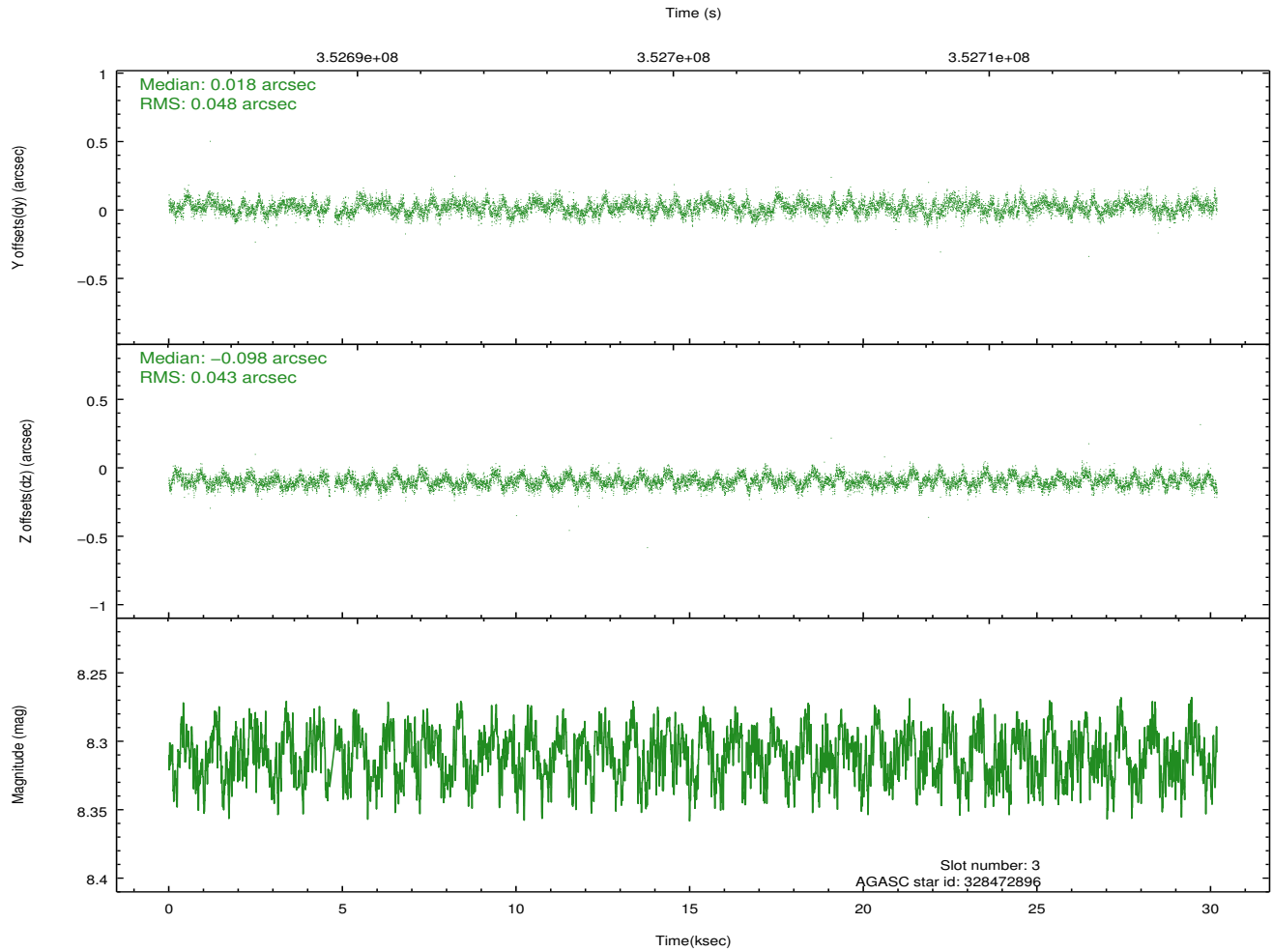
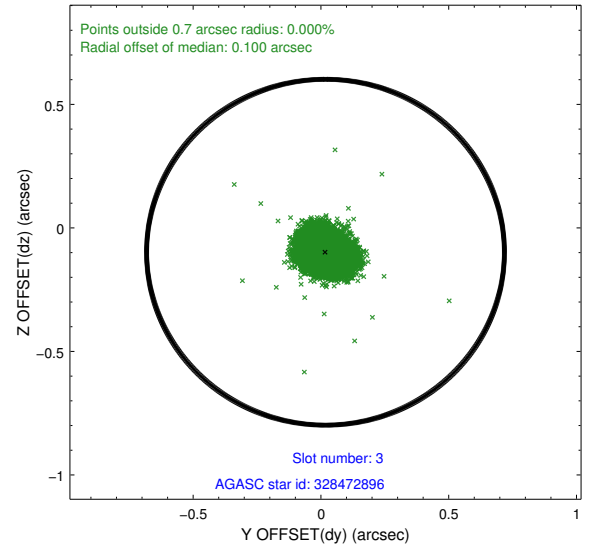
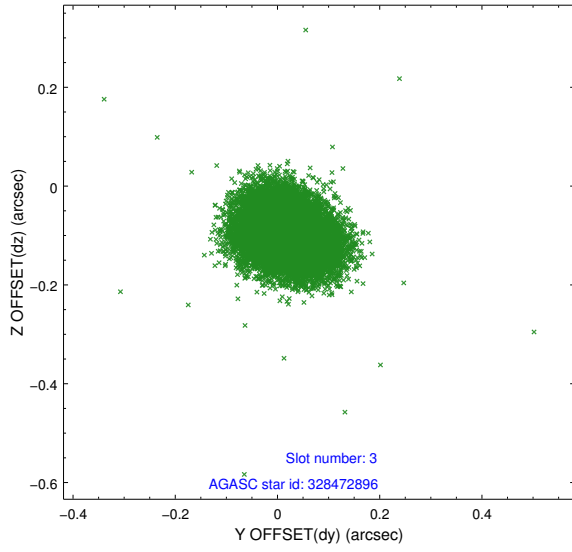


Slot Statistics

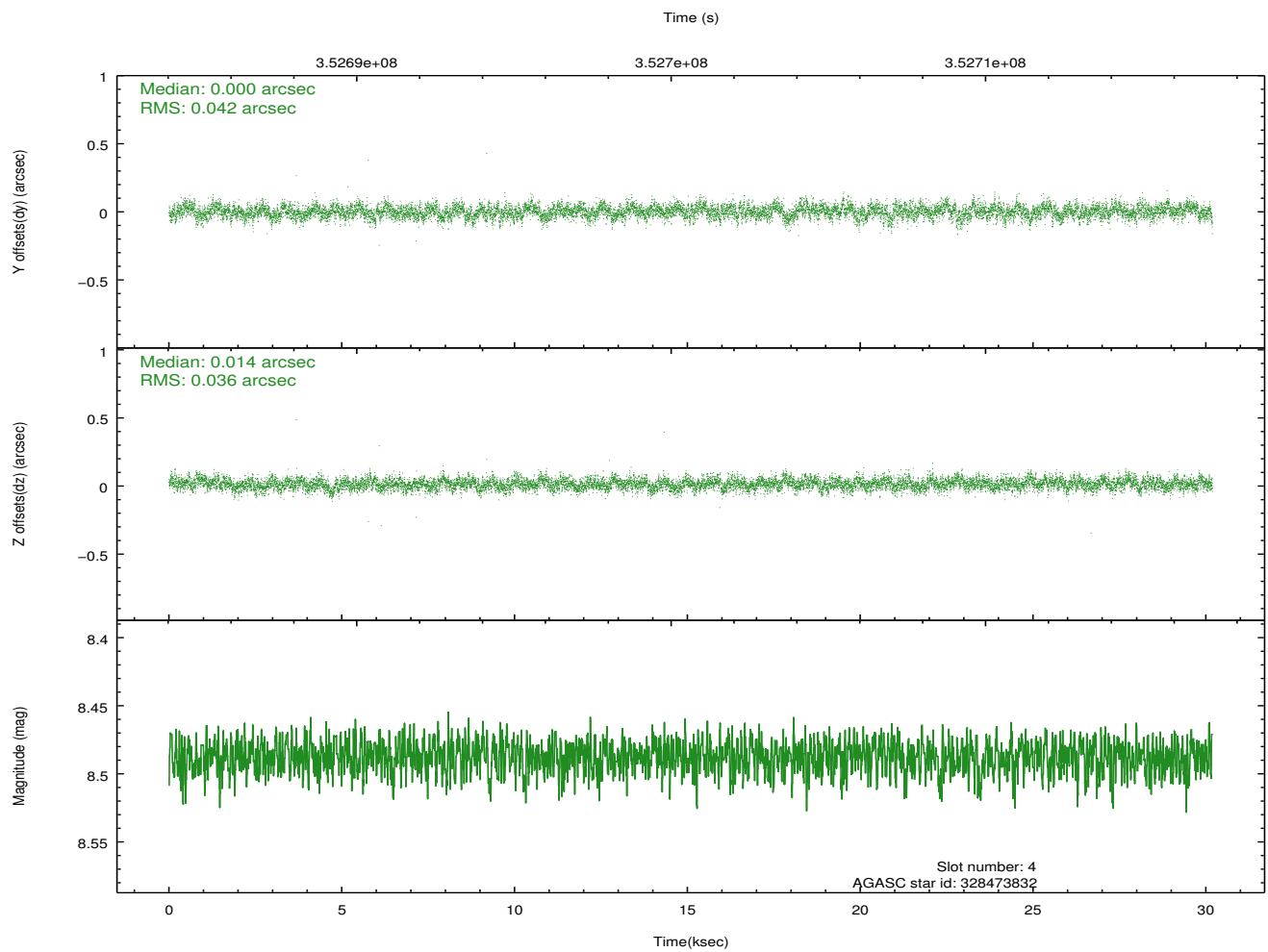
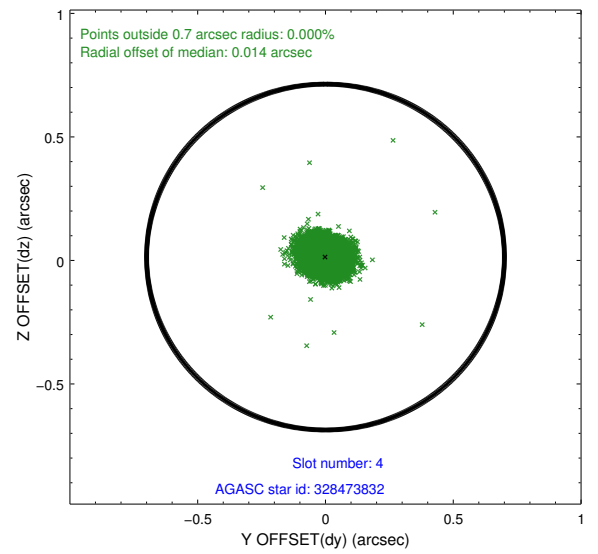
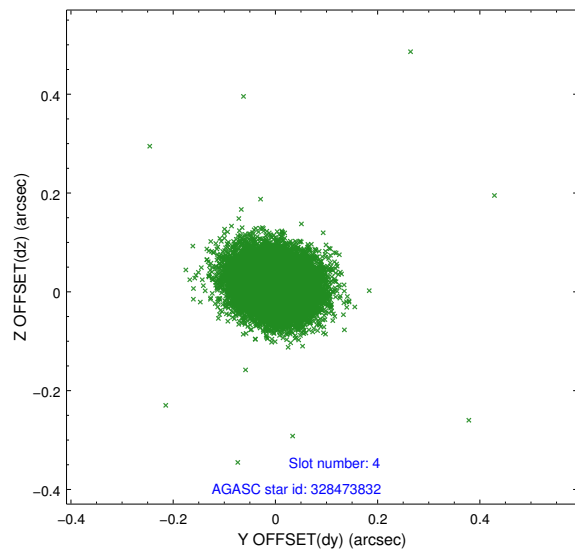
slot	status	id	mag	n_pts	med_dy	med_dz	dr1	dr2	ra	dec	mean_y	mean_z
0	FID	ACIS-I-1	7.05	7361	0.025	0.016	0.008	0.016	0.000000	0.000000	926.22	-838.05
1	FID	ACIS-I-5	7.05	7361	-0.198	0.038	0.011	0.021	0.000000	0.000000	-1822.10	1059.38
2	FID	ACIS-I-6	7.05	7362	0.081	0.017	0.010	0.020	0.000000	0.000000	391.70	1703.98
3	GUIDE	328472896	8.31	14633	0.018	-0.098	0.068	0.108	151.469747	34.201013	1863.40	1286.24
4	GUIDE	328473832	8.49	14715	0.000	0.014	0.058	0.094	151.466016	34.252055	1785.39	1119.62
5	GUIDE	328859664	7.15	14725	0.075	0.187	0.062	0.098	151.454409	35.002360	515.49	-1264.83
6	GUIDE	328860432	9.16	14716	-0.051	-0.007	0.100	0.159	151.141670	35.103376	1147.54	-2028.64
7	GUIDE	328473584	7.45	14721	-0.042	-0.103	0.062	0.102	152.179746	34.242257	-63.22	2165.52

2.4 Star Slots

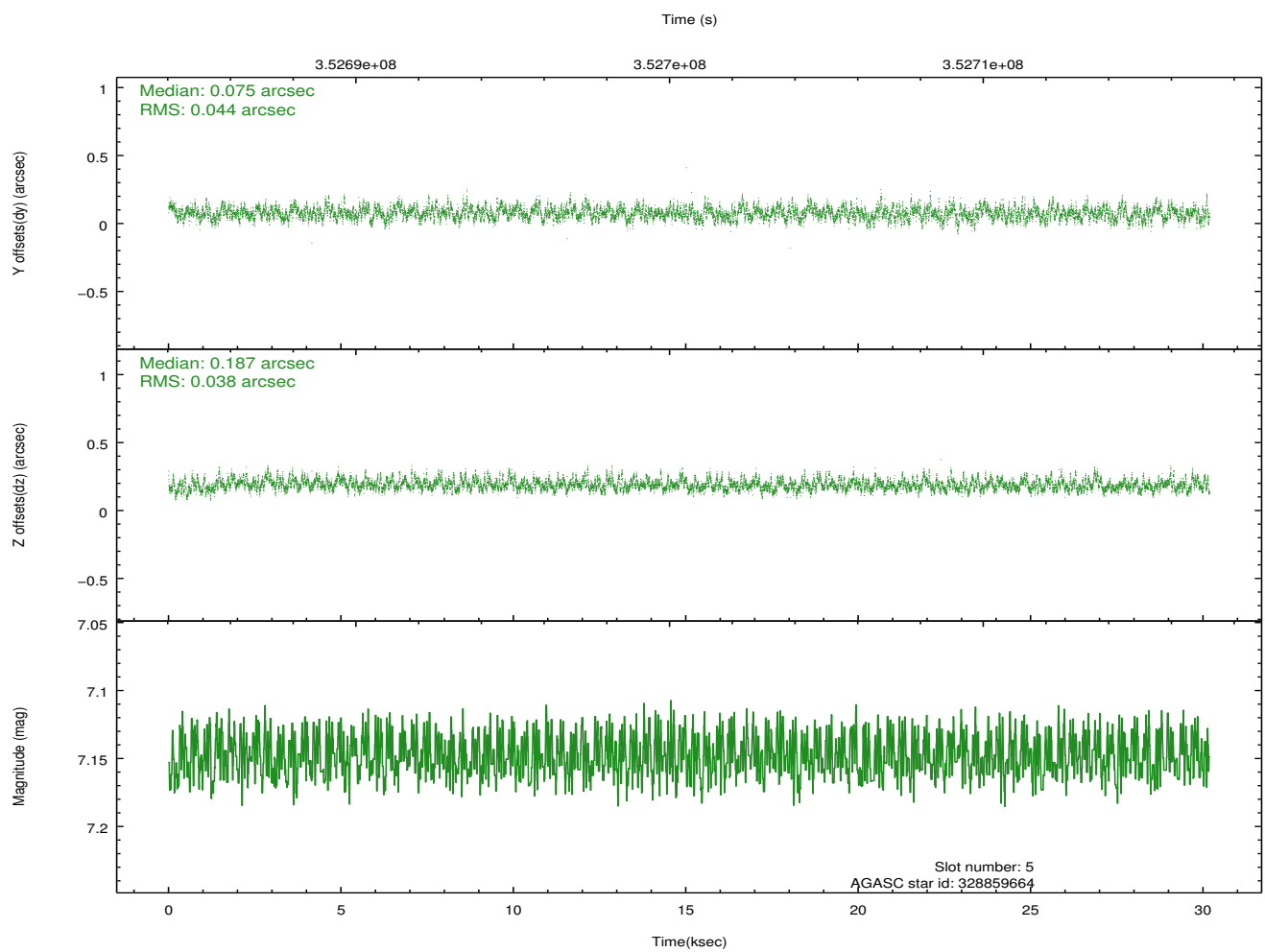
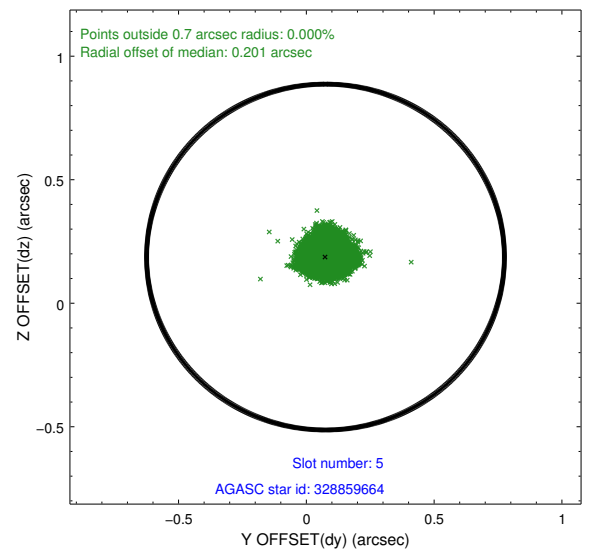
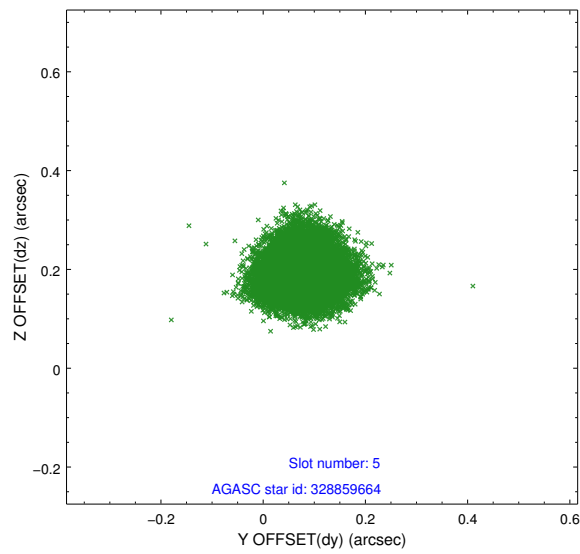
2.4.1 Slot 3



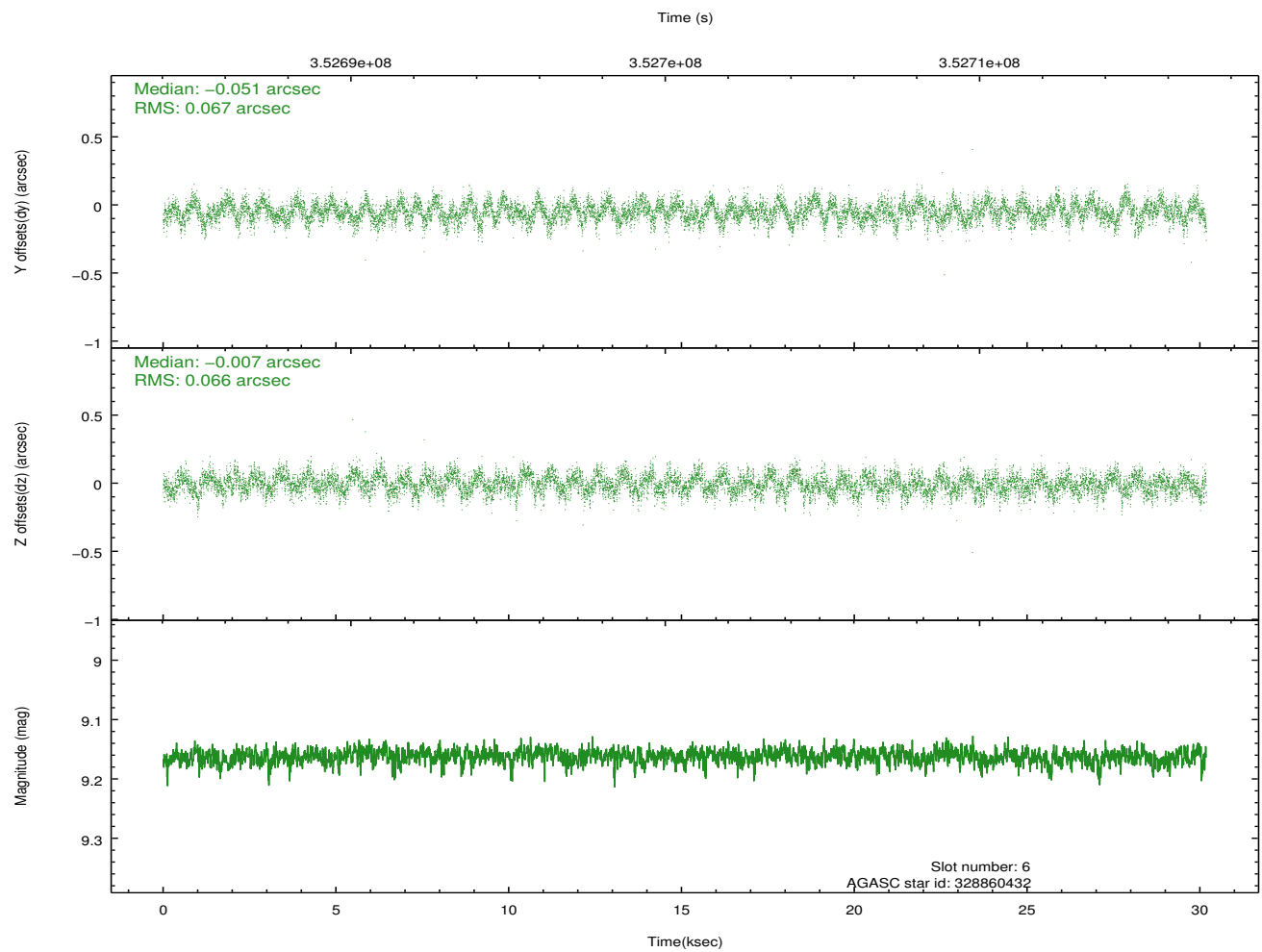
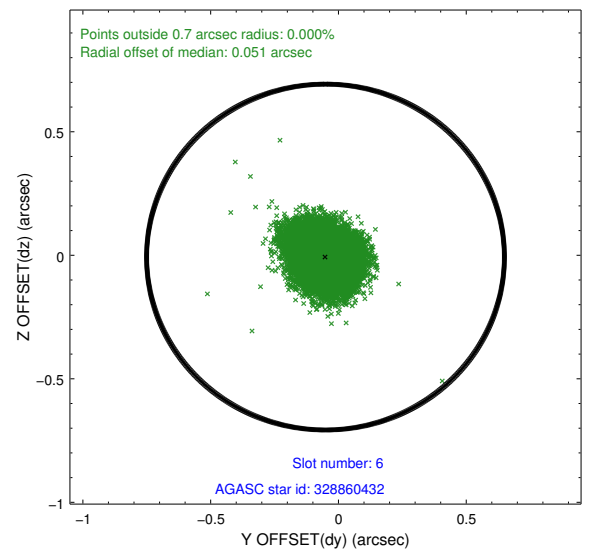
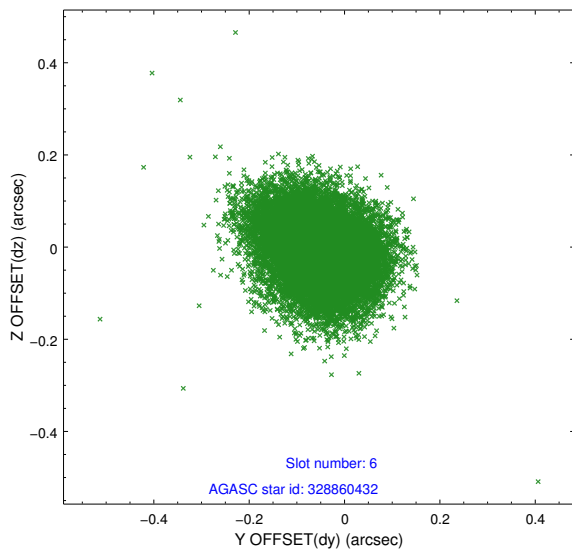
2.4.2 Slot 4



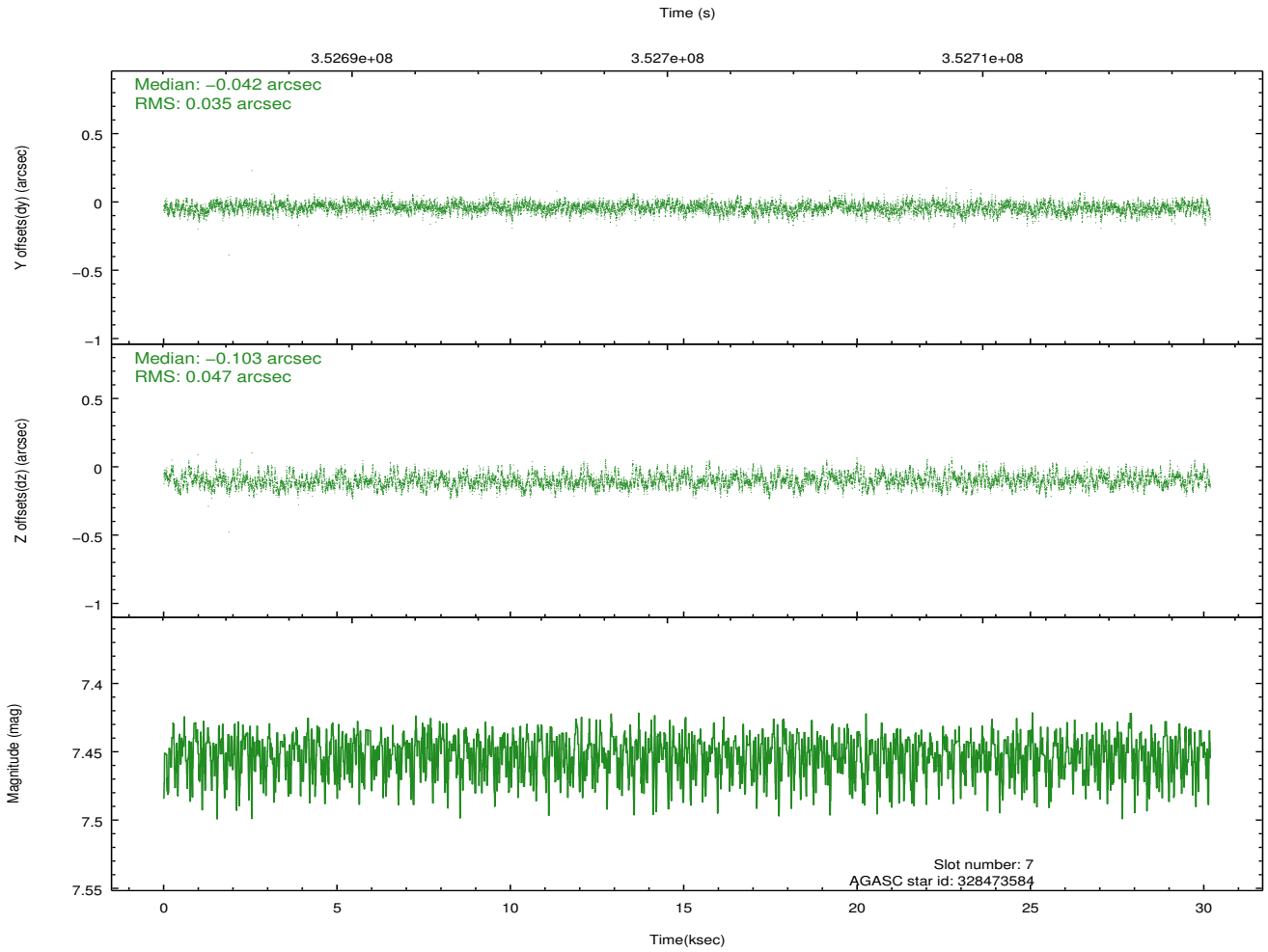
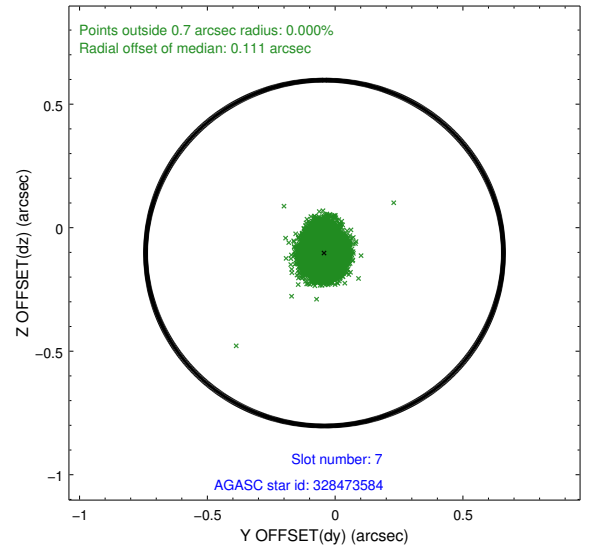
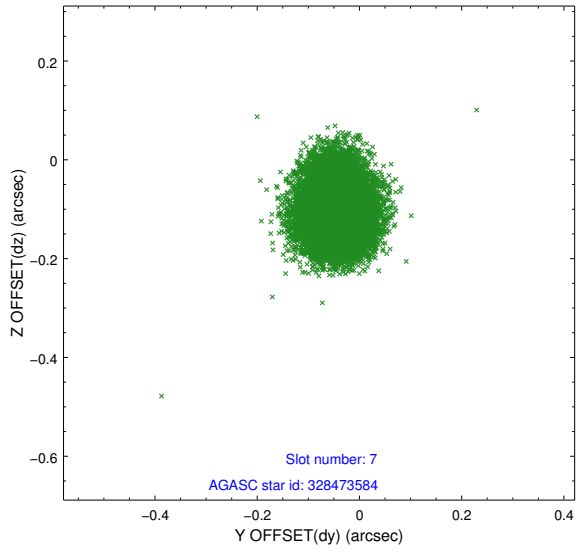
2.4.3 Slot 5



2.4.4 Slot 6

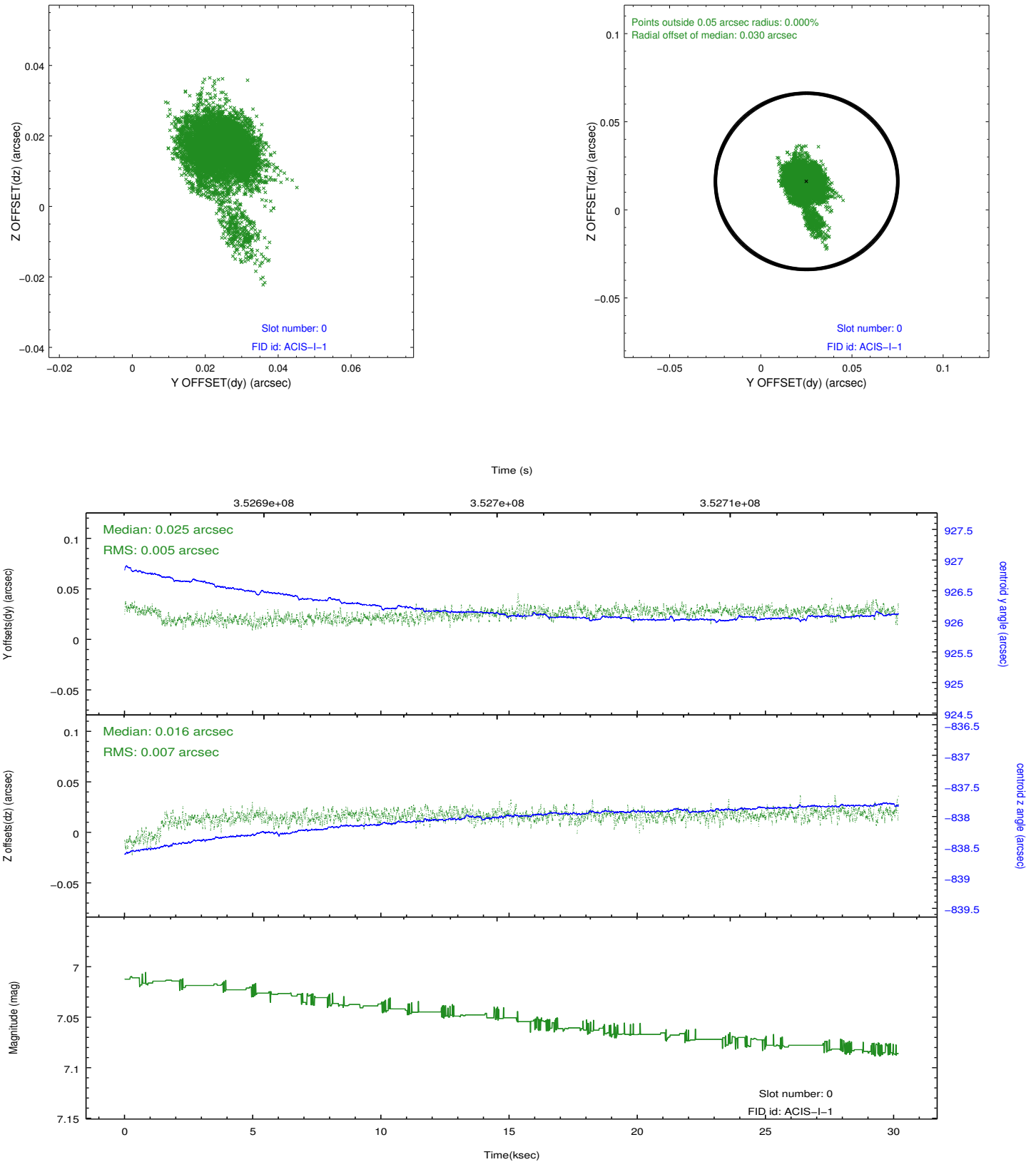


2.4.5 Slot 7

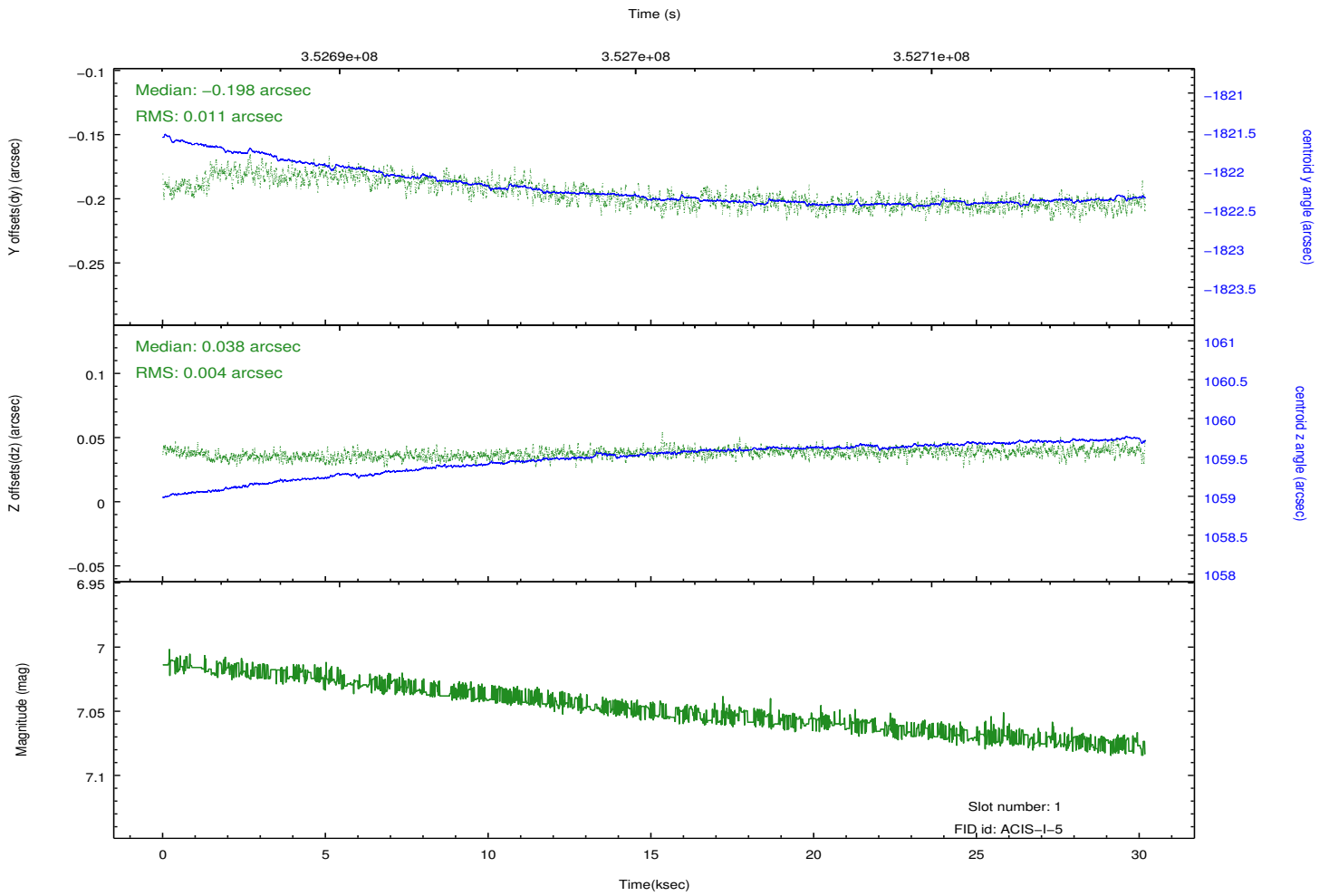
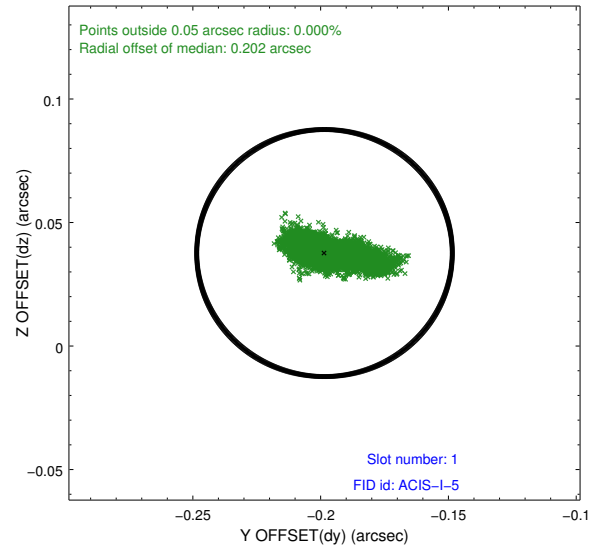
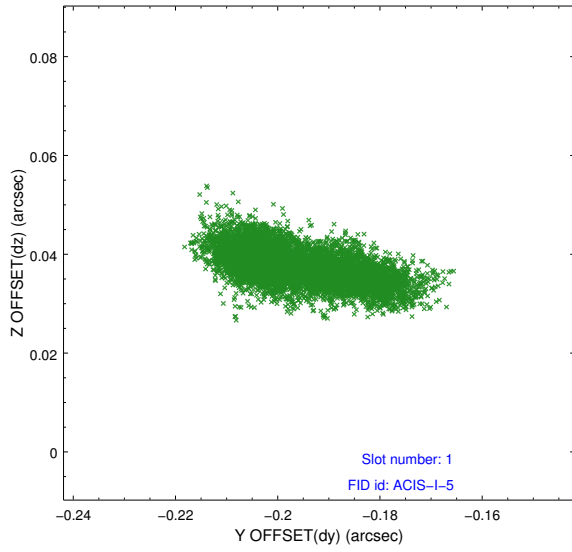


2.5 FID Slots

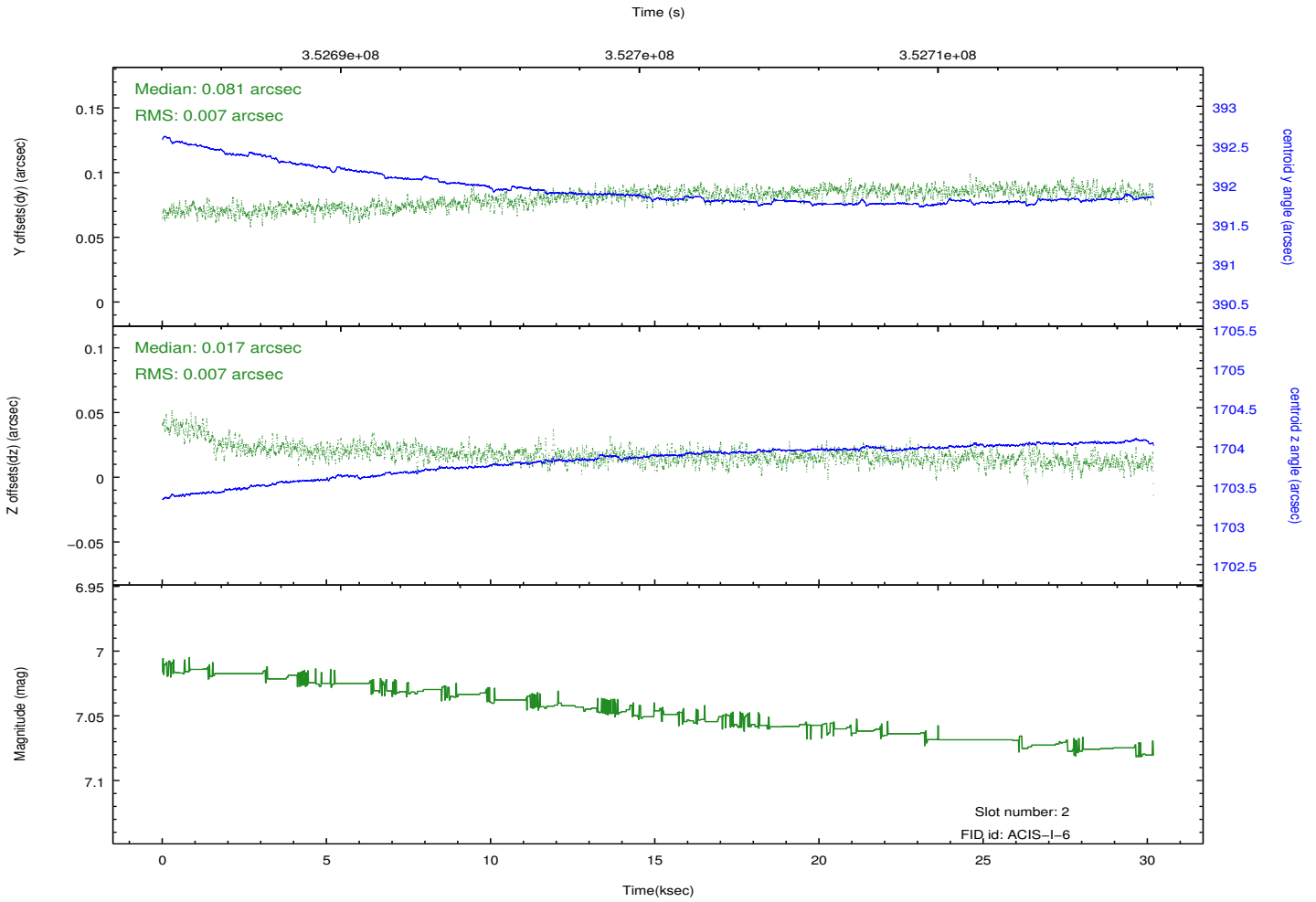
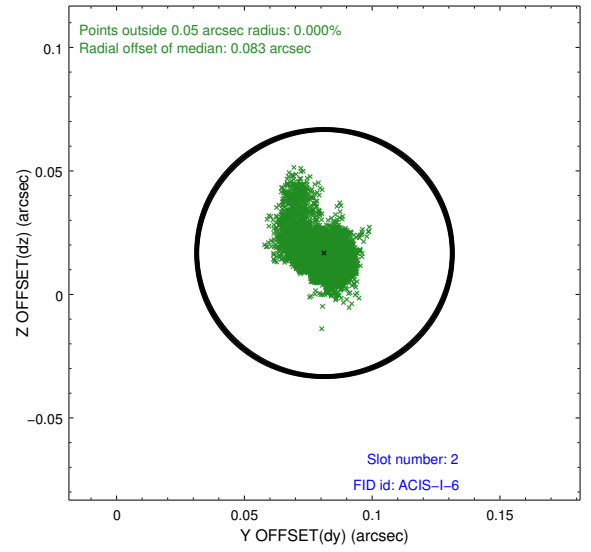
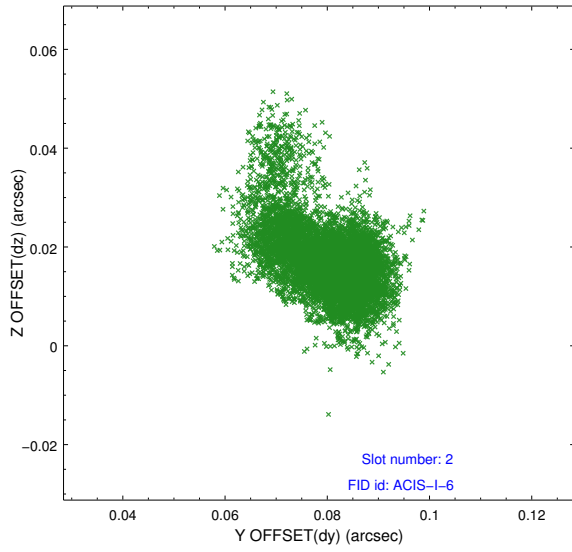
2.5.1 Slot 0



2.5.2 Slot 1



2.5.3 Slot 2



A Summary

A.1 Status

V&V Scientist	Jen Lauer
V&V Date (YYYY-MM-DD)	2012.06.07
V&V Edition	1
V&V Disposition and Status	OK
V&V Charge Time	30.1722181

A.2 Comments

Joint Proposal: HST