

V&V Reference Report

L2 ASCDS Version : 8.4.5

Observation 10272 - L2 Version 2
Chandra X-Ray Center

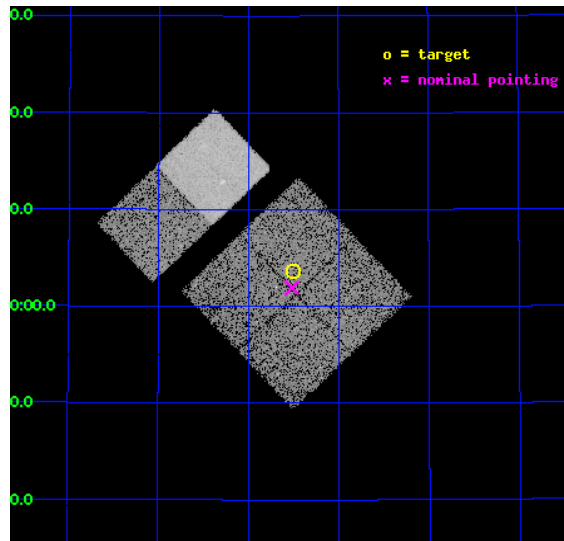
L2 Processing Date : Jun 15 2012

Contents

1	Front	2
2	OBI	3
2.1	OBI	3
2.1.1	Images	3
2.1.2	Bias	3
2.1.3	Parameters	4
2.1.4	Events	4
2.2	Compared Parameters	5
2.3	Aspect	6
2.4	Star Slots	9
2.4.1	Slot 3	9
2.4.2	Slot 4	10
2.4.3	Slot 5	11
2.4.4	Slot 6	12
2.4.5	Slot 7	13
2.5	FID Slots	14
2.5.1	Slot 0	14
2.5.2	Slot 1	15
2.5.3	Slot 2	16
A	Summary	17
A.1	Status	17
A.2	Comments	17

1 Front

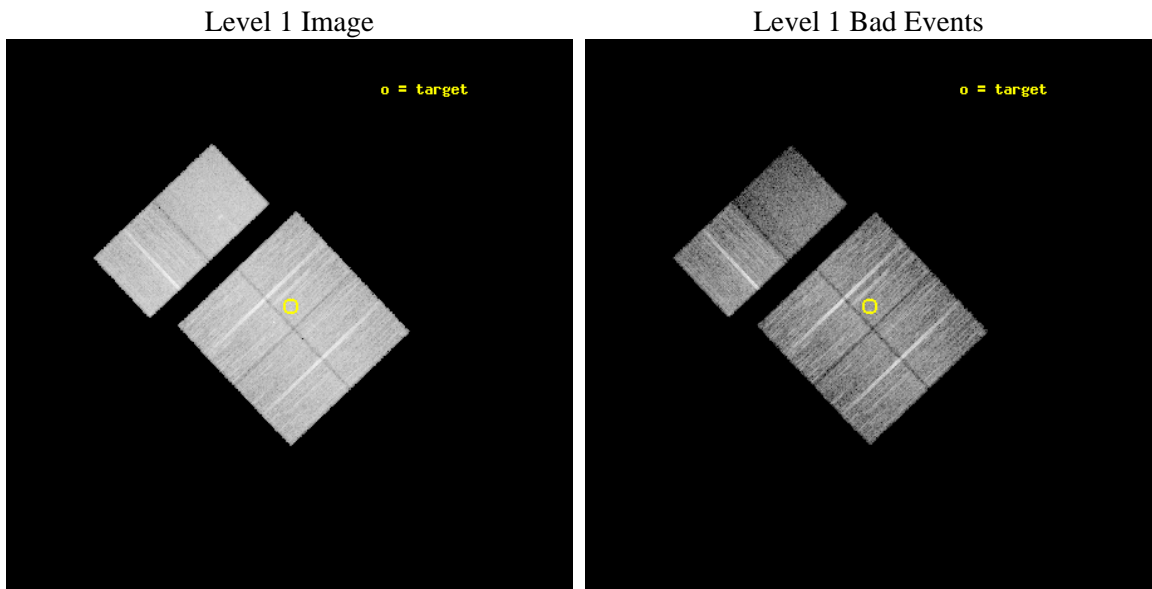
seq_num	701815	Sequence number
obs_id	10272	Observation id
title	Using Chandra and HST to Construct the First Detailed Timeline of Early-Type Galaxy Evolution	Proposal title
observer	Prof. Ann Zabludoff	Principal investigator
object	SDSSJ161330.19+510335.6	Source name
dtcycle	0	
cycle	P	events from which exps? Prim/Second/Both
ra_targ	243.375833	Observer's specified target RA [deg]
dec_targ	51.059889	Observer's specified target Dec [deg]
ra_nom	243.37980487408	Nominal RA [deg]
dec_nom	51.032065104688	Nominal Dec [deg]
roll_nom	316.44114417746	Nominal Roll [deg]
revision	2	Processing version of data
ontime	10924.799959362	Sum of GTIs [s]
livetime	10786.463564151	Livetime [s]
ontime0	10924.799959362	Sum of GTIs [s]
ontime1	10924.799959362	Sum of GTIs [s]
ontime2	10924.799959362	Sum of GTIs [s]
ontime3	10924.799959362	Sum of GTIs [s]
ontime6	10924.799959362	Sum of GTIs [s]
ontime7	10924.799959362	Sum of GTIs [s]
l2events	78787	Number of level 2 events



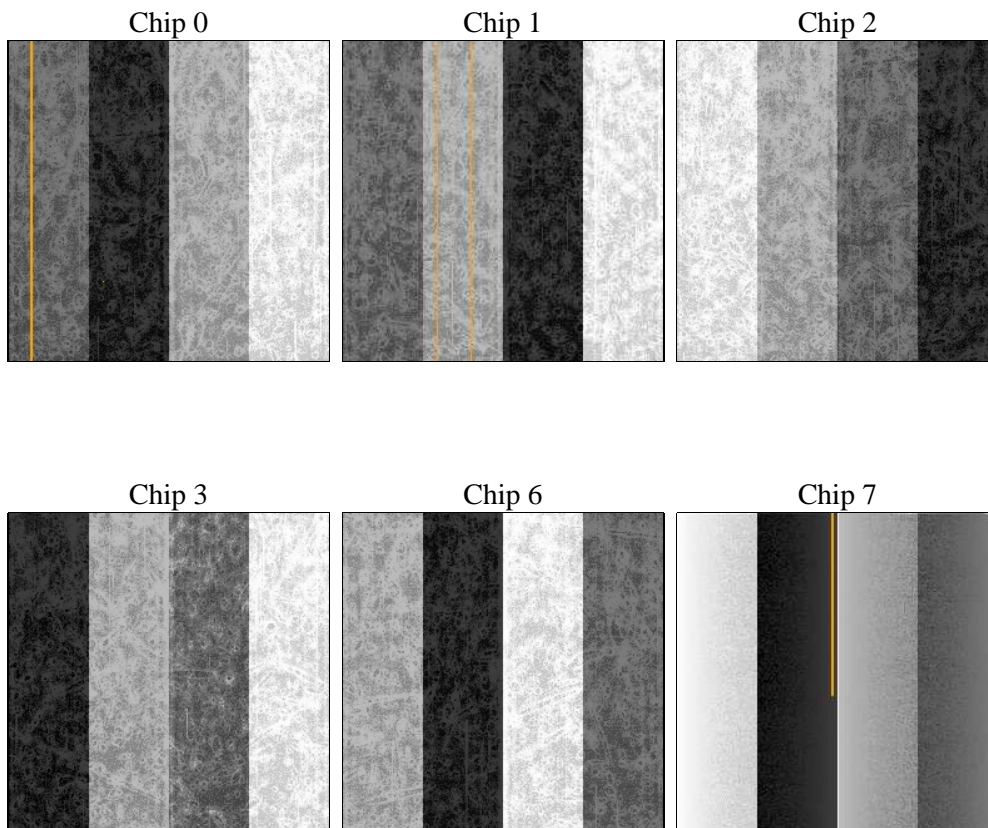
2 OBI

2.1 OBI

2.1.1 Images



2.1.2 Bias



2.1.3 Parameters

obi_num	0	Obi number	sched_exp_time	10778.121000	[s] Scheduled observation exposure time
ascdsver	8.4.5	Processing system revision	ontime	10924.799959362	Sum of GTIs [s]
caldbver	4.4.10	 	ontime0	10924.799959362	Sum of GTIs [s]
date	2012-06-15T13:33:17	Date and time of file creation	ontime1	10924.799959362	Sum of GTIs [s]
revision	2	Processing version of data	ontime2	10924.799959362	Sum of GTIs [s]
			ontime3	10924.799959362	Sum of GTIs [s]
			ontime6	10924.799959362	Sum of GTIs [s]
			ontime7	10924.799959362	Sum of GTIs [s]
			l1events	549846	Number of level 1 events

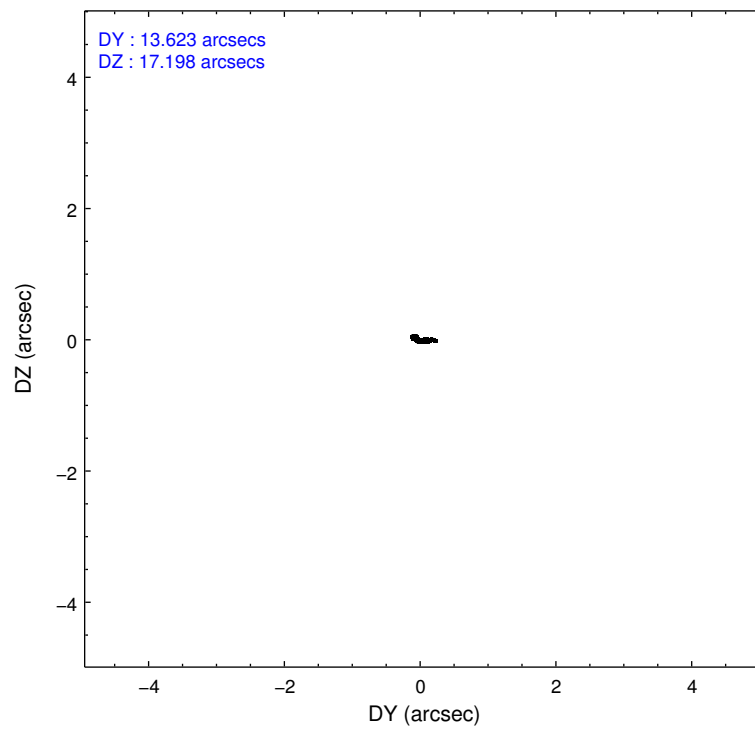
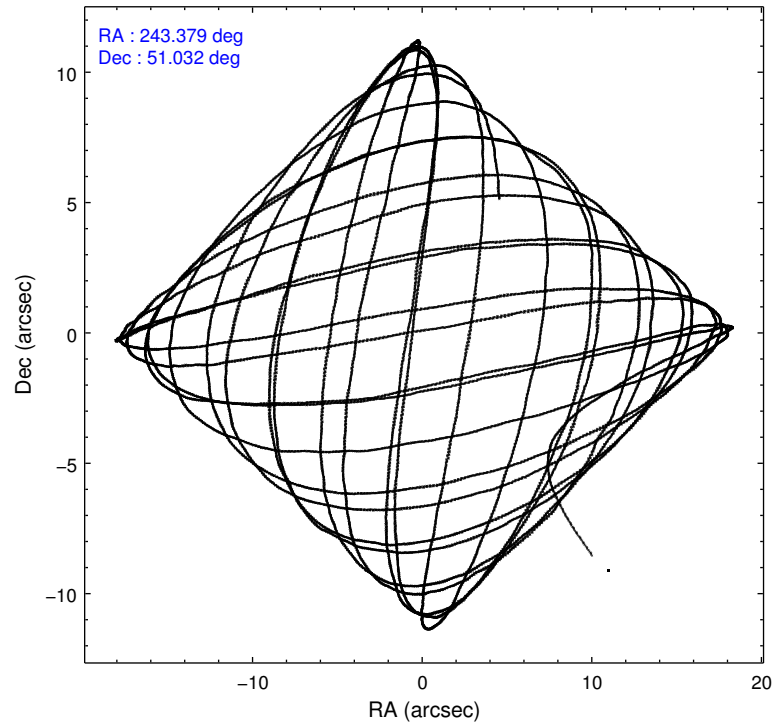
2.1.4 Events

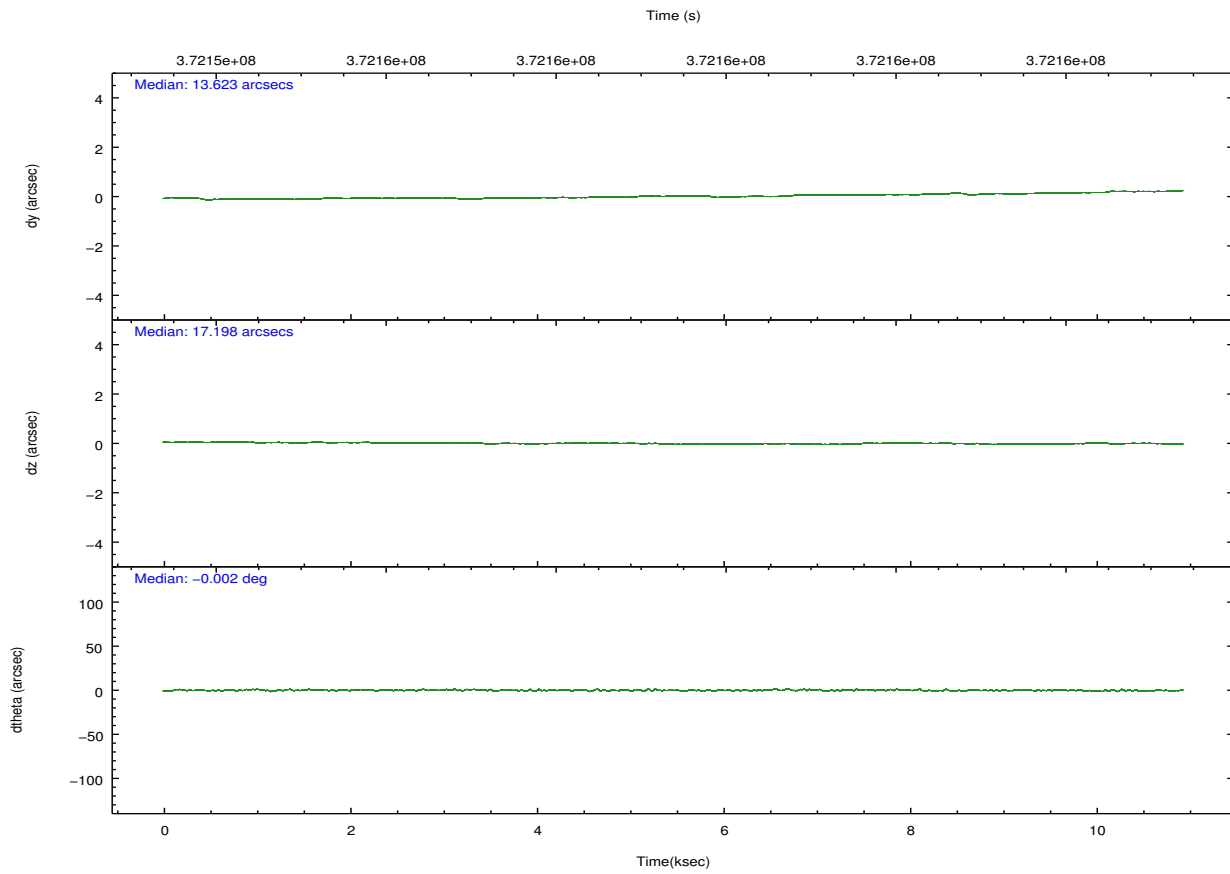
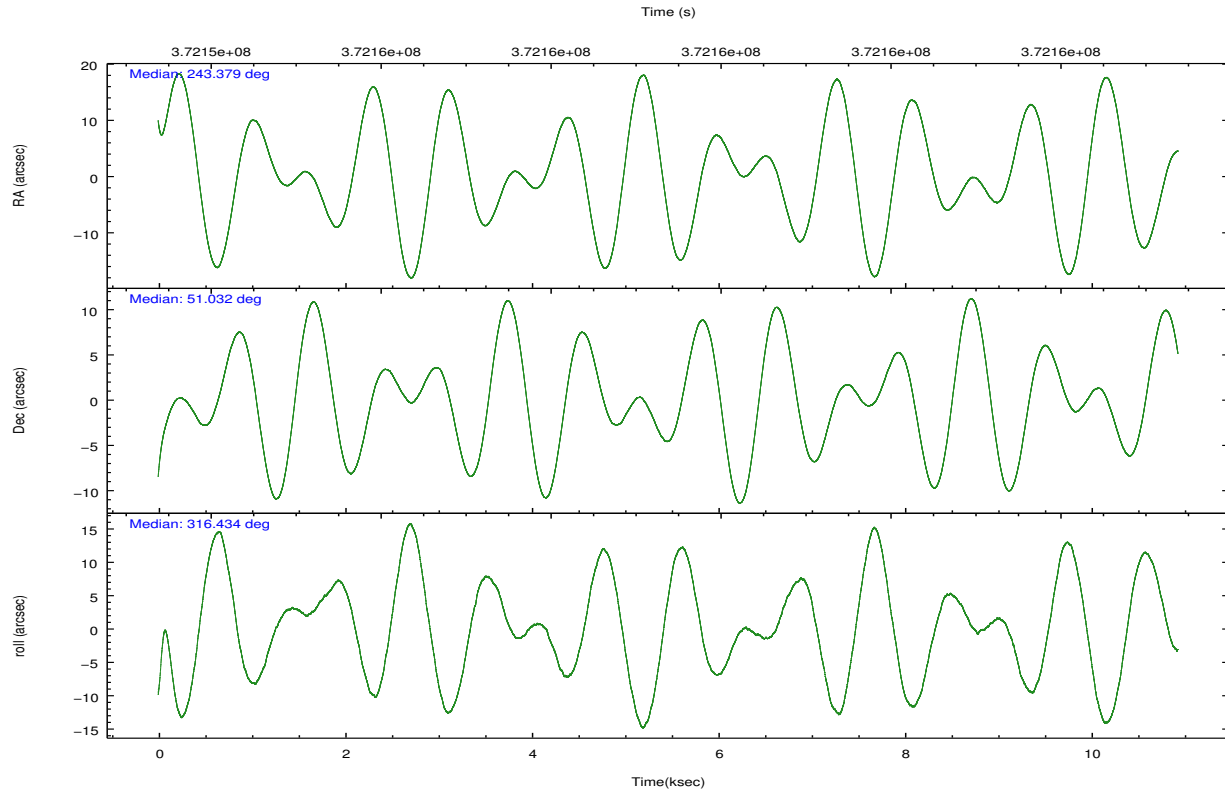
	ccd 0	ccd 1	ccd 2	ccd 3	ccd 6	ccd 7		ccd 0	ccd 1	ccd 2	ccd 3	ccd 6	ccd 7
level 1 events	85690	86918	98455	89607	97153	92023	grade 0 events	3479	3425	3638	3328	3657	4693
rejected events	76642	77595	89572	81291	87650	48729		4%	3%	3%	3%	3%	5%
rejected %	89%	89%	90%	90%	90%	52%	grade 1 events	46	49	65	43	51	152
								0%	0%	0%	0%	0%	0%
							grade 2 events	2340	2142	2179	1921	2266	9738
								2%	2%	2%	2%	2%	10%
							grade 3 events	1029	1120	891	926	1034	4206
								1%	1%	0%	1%	1%	4%
							grade 4 events	921	1077	980	929	1004	4173
								1%	1%	0%	1%	1%	4%
							grade 5 events	2789	3159	2573	3401	3384	9902
								3%	3%	2%	3%	3%	10%
							grade 6 events	1691	1988	1561	1595	1942	22333
								1%	2%	1%	1%	1%	24%
							grade 7 events	73395	73958	86568	77464	83815	36826
								85%	85%	87%	86%	86%	40%

2.2 Compared Parameters

Parameter	Planned	Actual	Parameter	Planned	Actual
Instrument	ACIS	ACIS	Obspar format version number	7	7
Detector	ACIS-012367	ACIS-012367	Obspar file type	PREDICTED	ACTUAL
Grating	NONE	NONE	Obspar update status	NONE	UPDATED
Data mode	FAINT	FAINT	CCD I0 on	Y	Y
Observation mode	POINTING	POINTING	CCD I1 on	Y	Y
[deg] Pointing RA	243.337205	243.3798048740802	CCD I2 on	Y	Y
[deg] Pointing Dec	51.038379	51.03206510468784	CCD I3 on	Y	Y
[deg] Pointing Roll	316.265589	316.4411441774625	CCD S0 on	N	N
[mm] SIM focus pos	-0.782348	-0.7809083437167272	CCD S1 on	N	N
[mm] SIM defocus	0	0.001439871863259334	CCD S2 on	O1	Y
[mm] SIM translation stage pos	-233.592463	-233.5874344608287	CCD S3 on	O2	Y
[mm] SIM translation stage offset	0	-0.005018542100998502	CCD S4 on	N	N
[s] Observation start time (MET)	372154059.184000	372152759.2319	CCD S5 on	N	N
Observation start date	2009-10-17T08:06:33	2009-10-17T07:45:59	Number of optional ACIS chips dropped	0	0
[s] Observation end time (MET)	372164838.184000	372165076.65752	On-chip summing requested	N	N
Observation end date	2009-10-17T11:06:12	2009-10-17T11:11:16	Subarray requested	NONE	NONE
Read mode	TIMED	TIMED	Alternating exposures requested	N	N
			[s] Primary exposure time	0.000000	3.2

2.3 Aspect





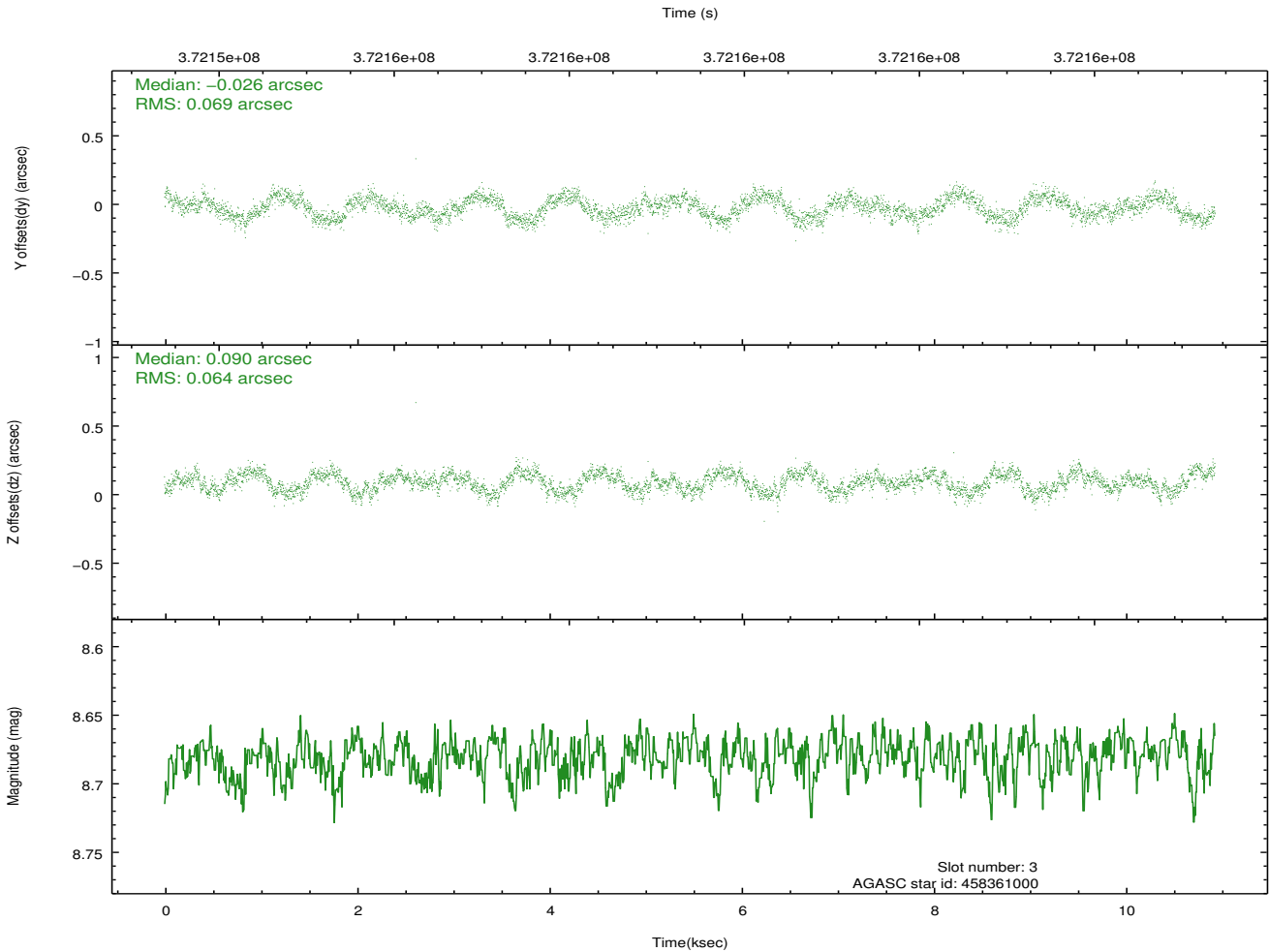
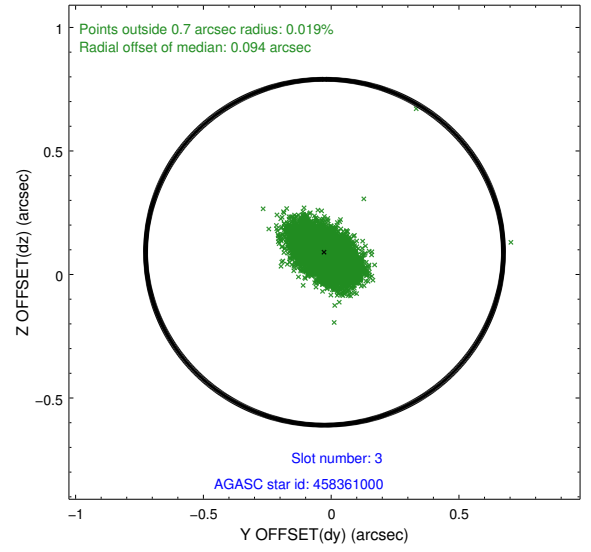
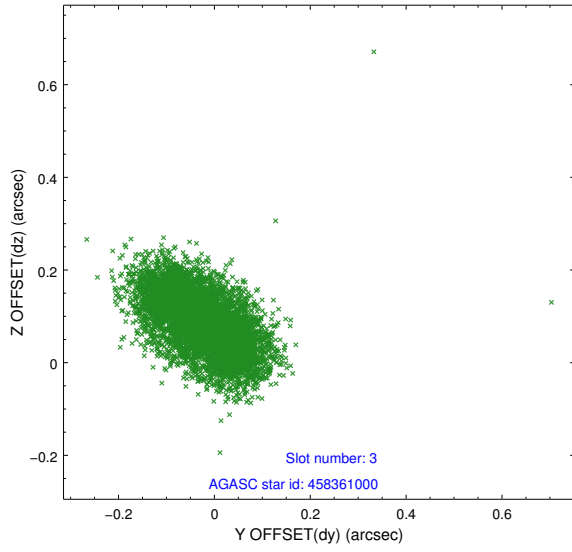
Slot Statistics

slot	status	id	mag	n_pts	med_dy	med_dz	dr1	dr2	ra	dec	mean_y	mean_z
0	FID	ACIS-I-1	6.99	2666	-0.011	-0.090	0.008	0.014	0.000000	0.000000	925.85	-840.94
1	FID	ACIS-I-4	6.92	2666	0.148	0.091	0.008	0.012	0.000000	0.000000	2146.30	1058.81
2	FID	ACIS-I-5	6.98	2667	-0.235	0.069	0.007	0.012	0.000000	0.000000	-1821.78	1057.16
3	GUIDE	458361000	8.68	5331	-0.026	0.090	0.102	0.157	243.206165	50.398283	1376.29	-1872.10
4	GUIDE	458366664	9.32	5331	0.056	-0.052	0.089	0.148	243.148630	51.763569	-2108.68	1595.72
5	GUIDE	458372368	9.75	5320	0.023	-0.057	0.140	0.225	242.799202	50.827762	-363.54	-1389.84
6	GUIDE	458368312	9.01	5329	-0.052	0.034	0.089	0.143	242.130676	51.150583	-2262.72	-1575.68
7	GUIDE	458371944	8.35	5330	-0.000	-0.010	0.079	0.126	242.279445	50.733354	-994.46	-2447.05

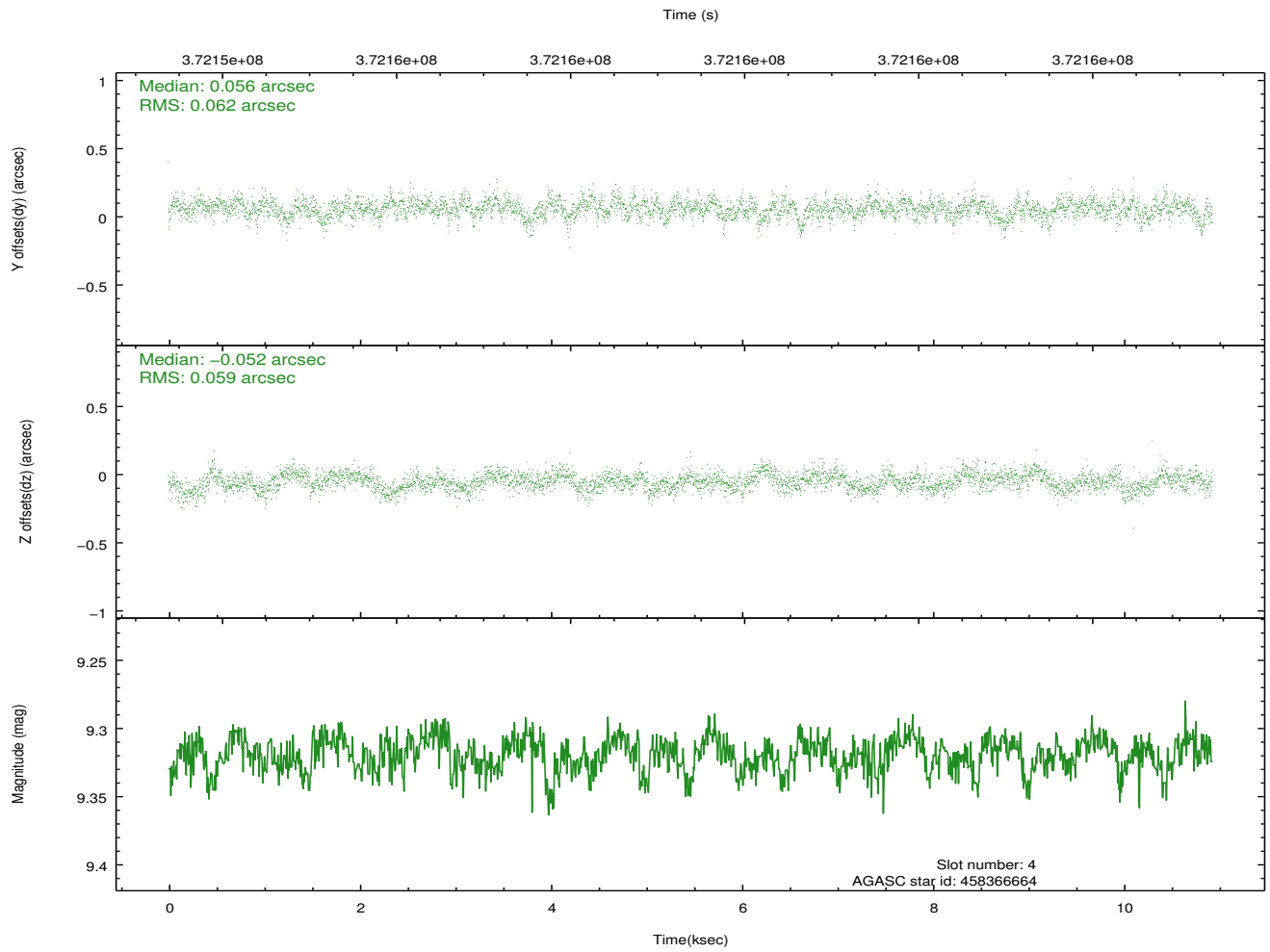
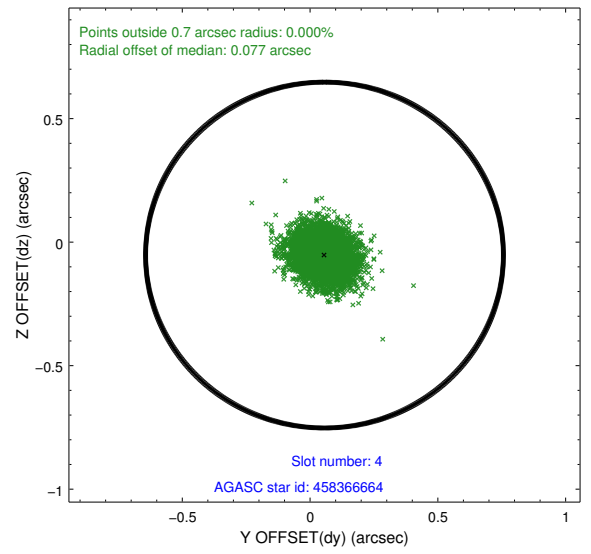
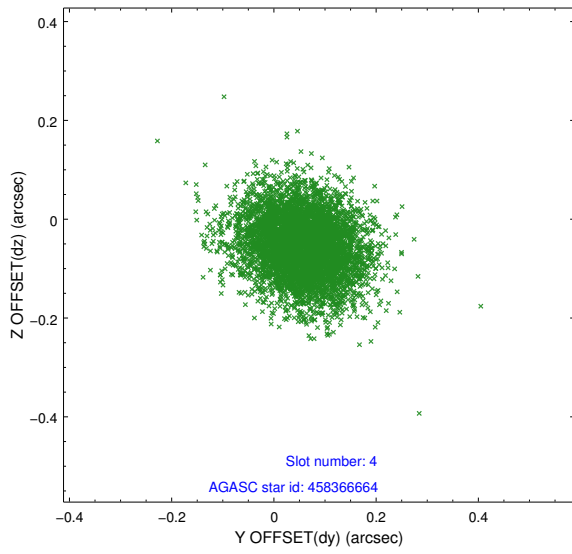
∞

2.4 Star Slots

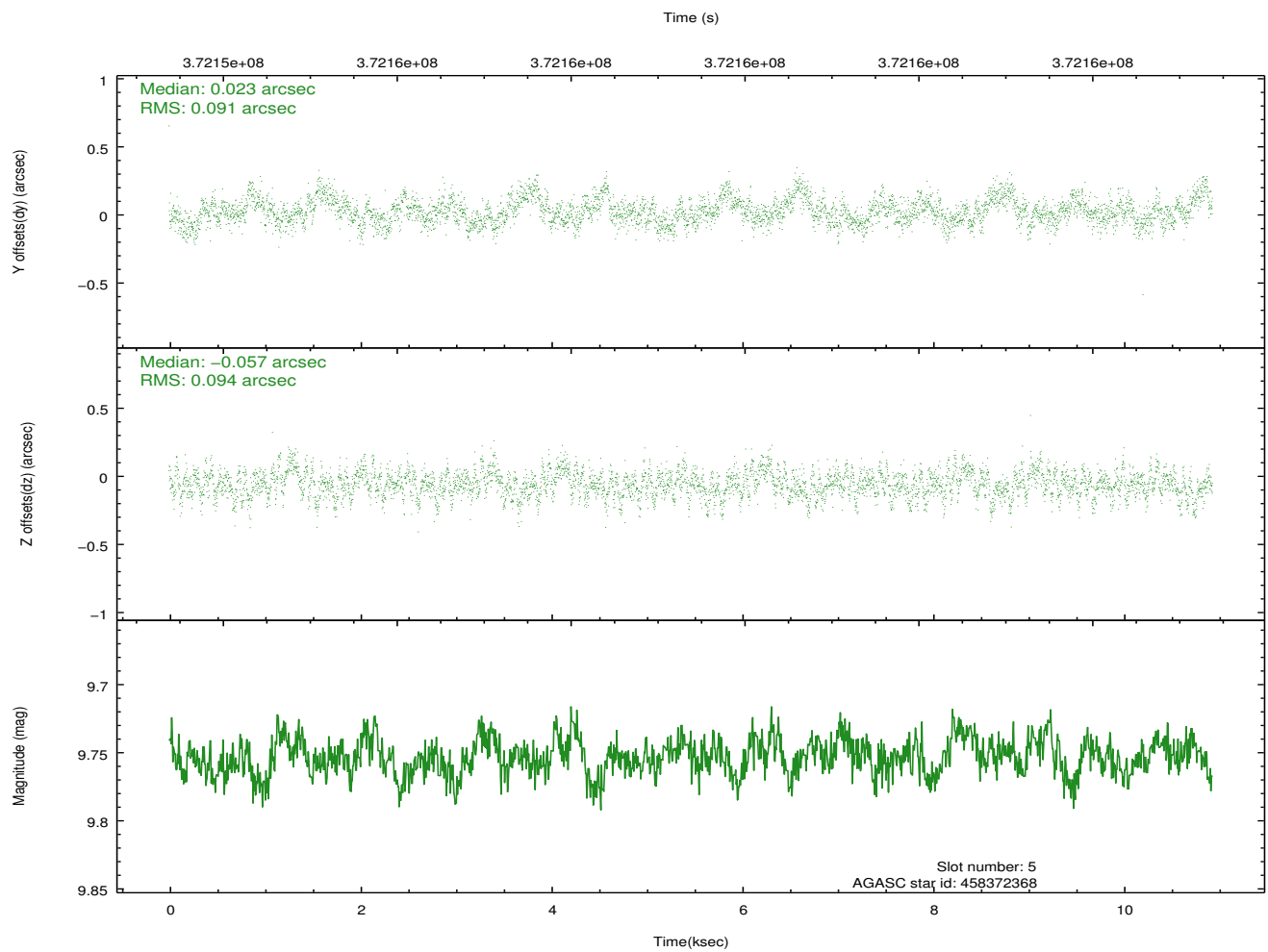
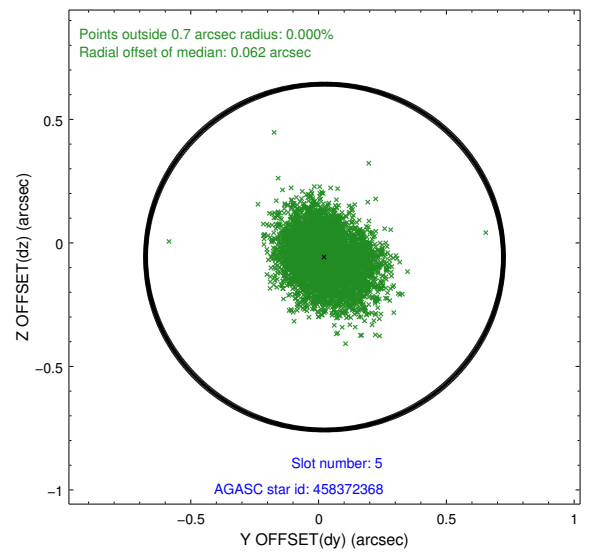
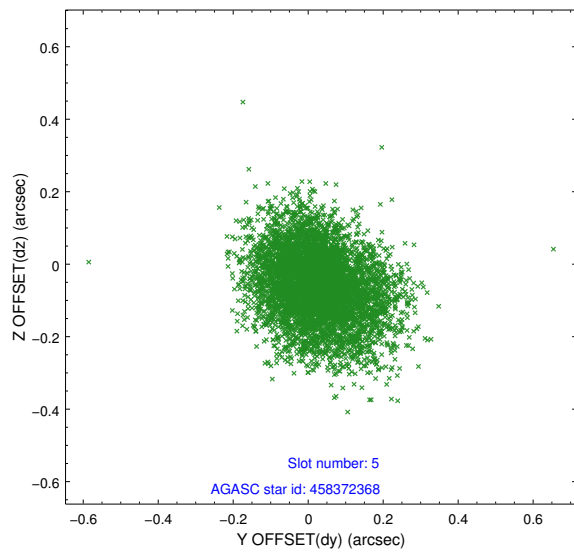
2.4.1 Slot 3



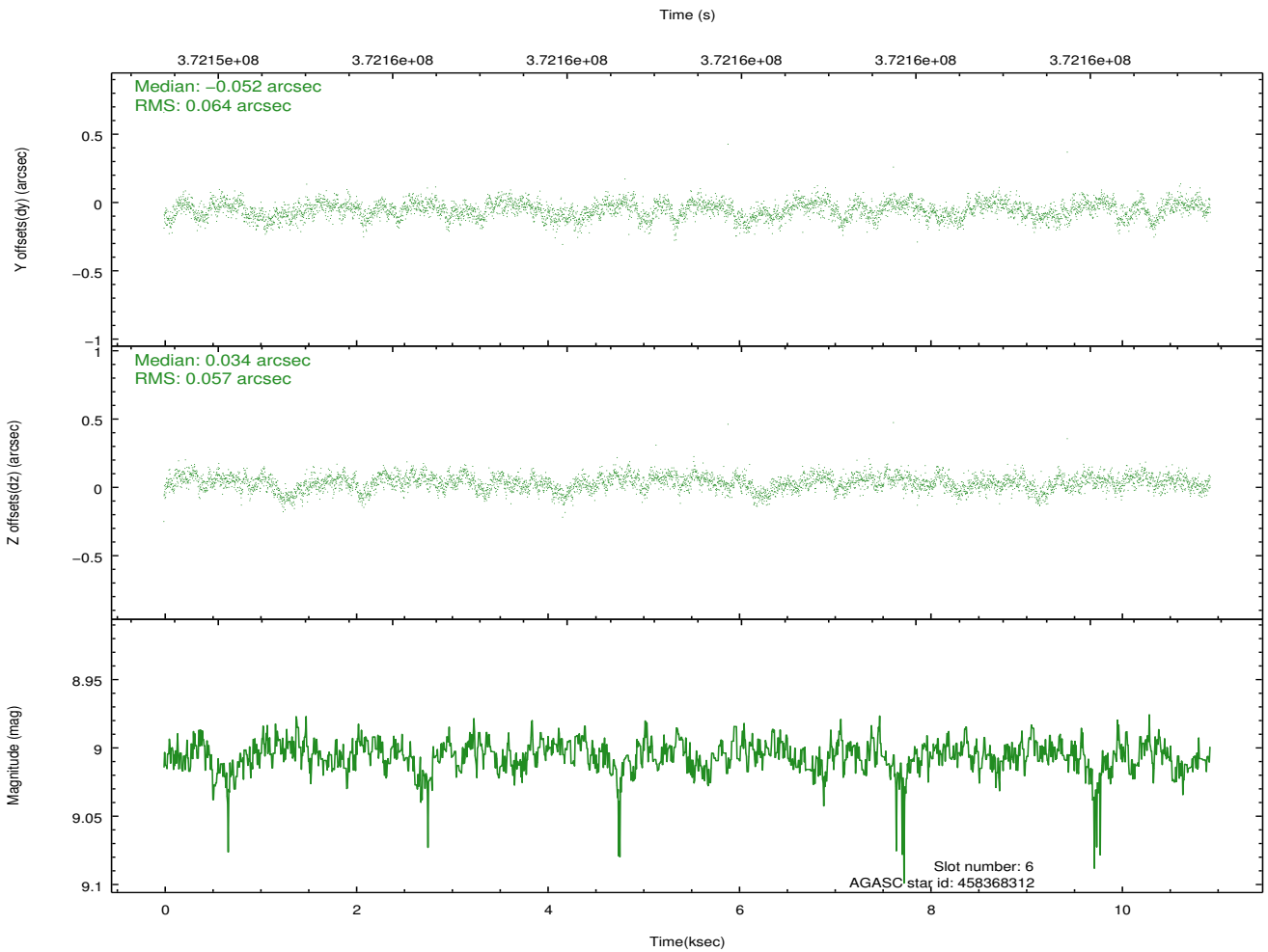
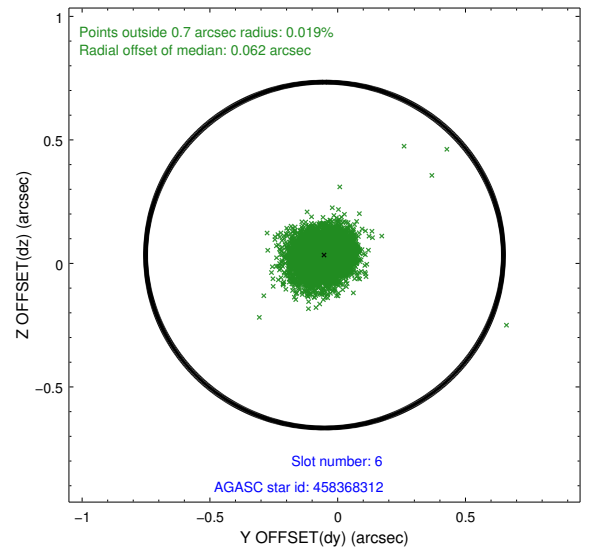
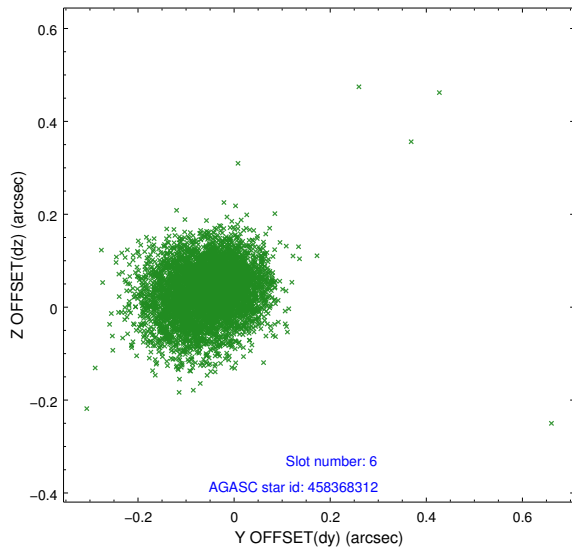
2.4.2 Slot 4



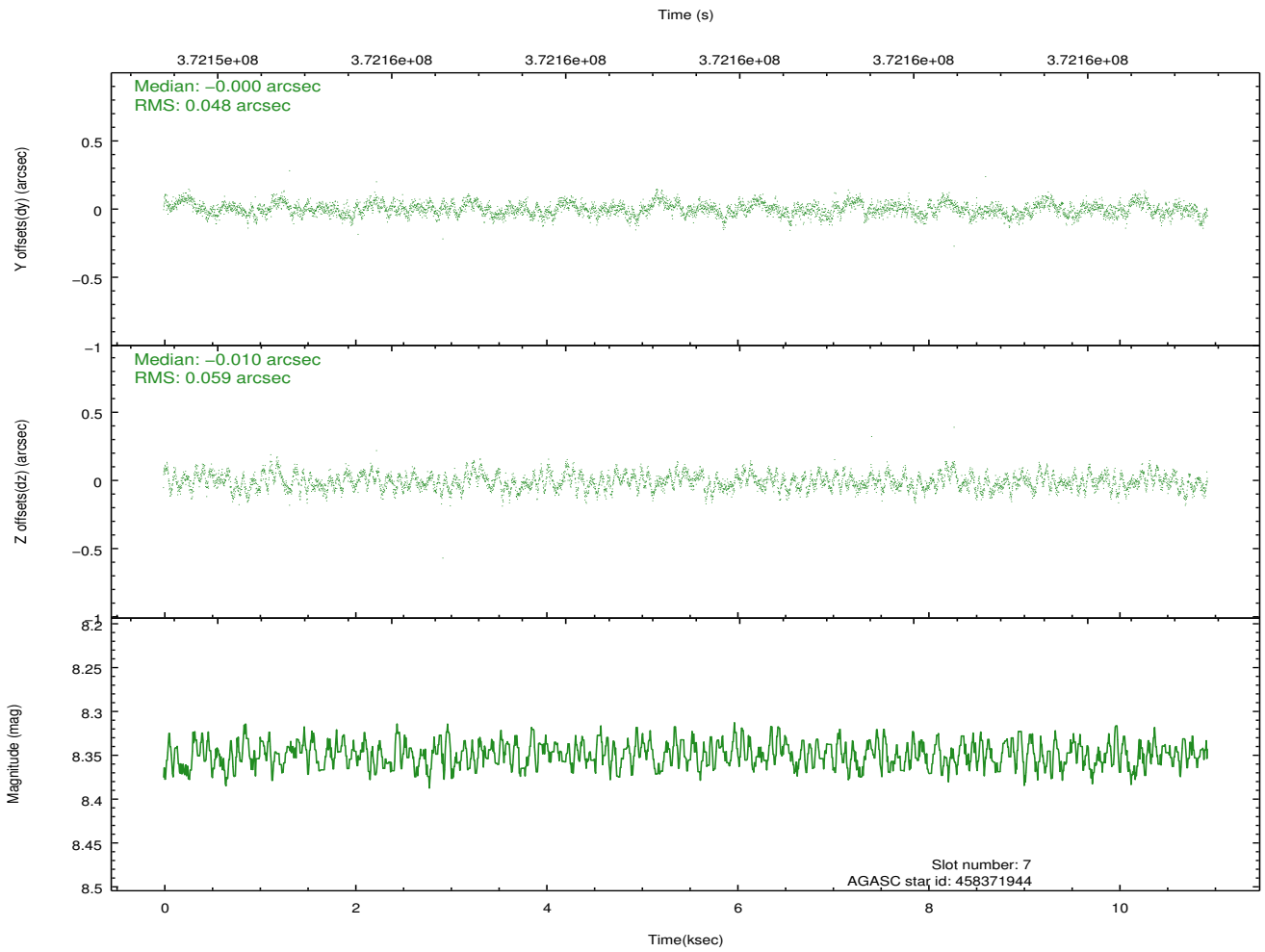
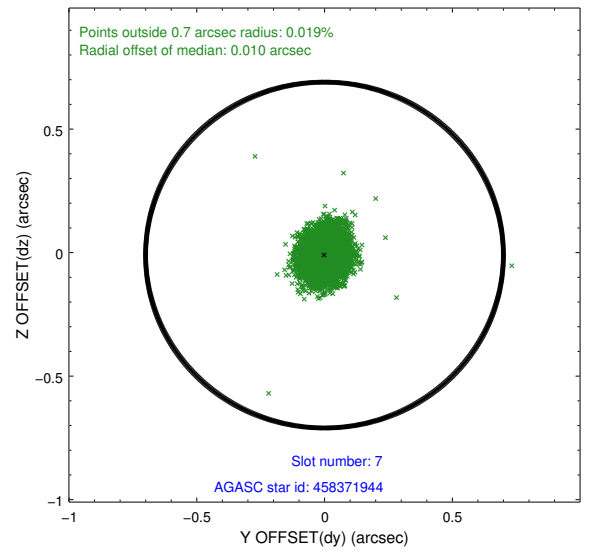
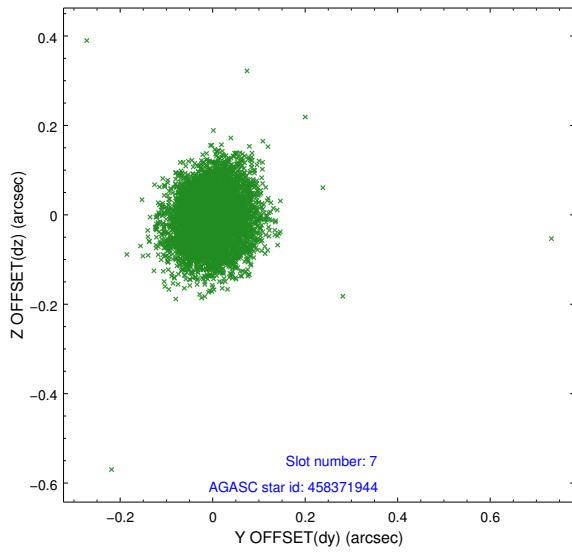
2.4.3 Slot 5



2.4.4 Slot 6

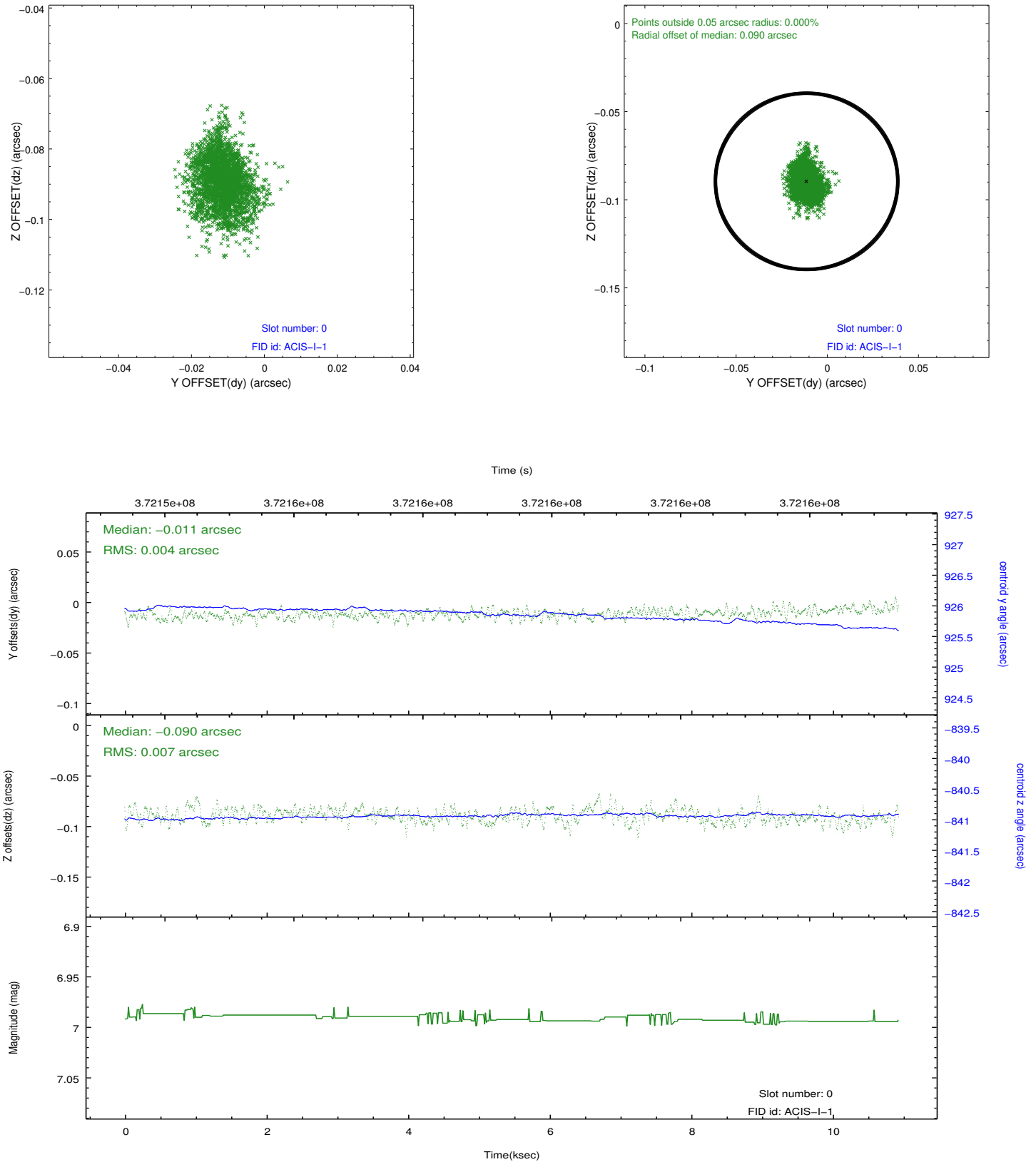


2.4.5 Slot 7

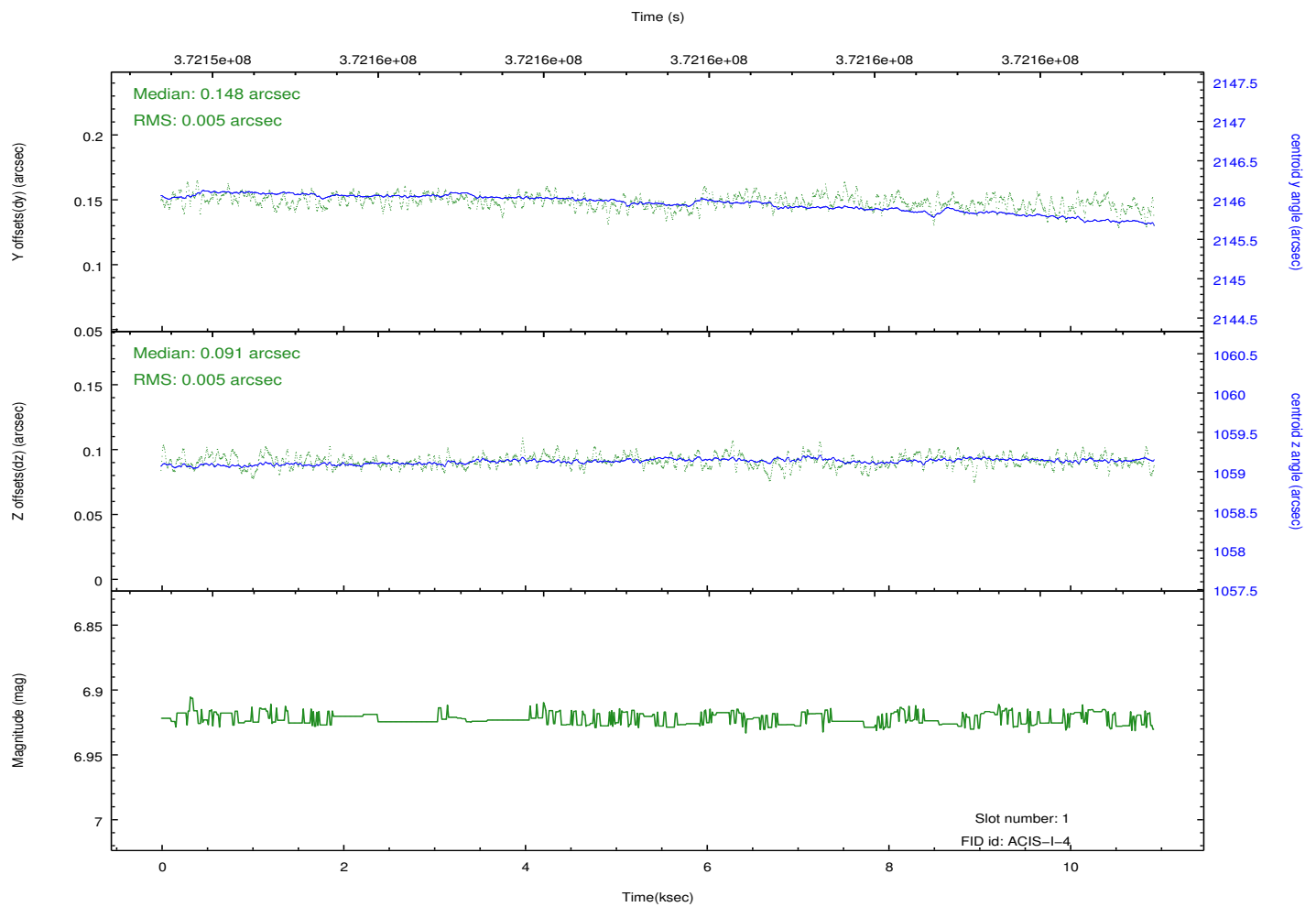
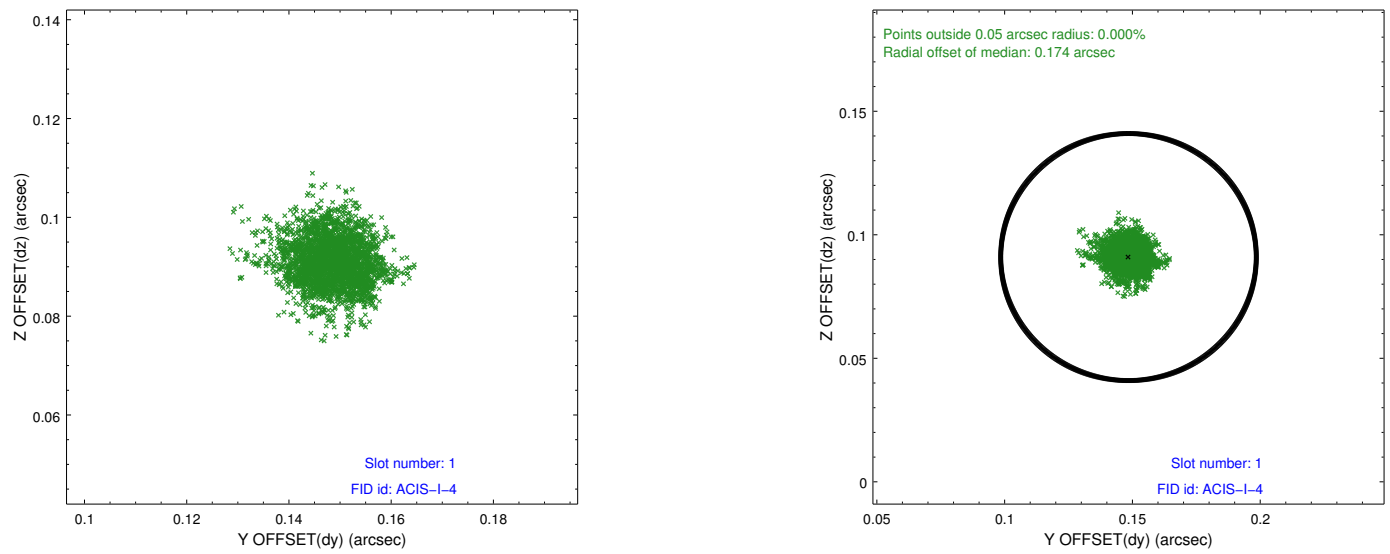


2.5 FID Slots

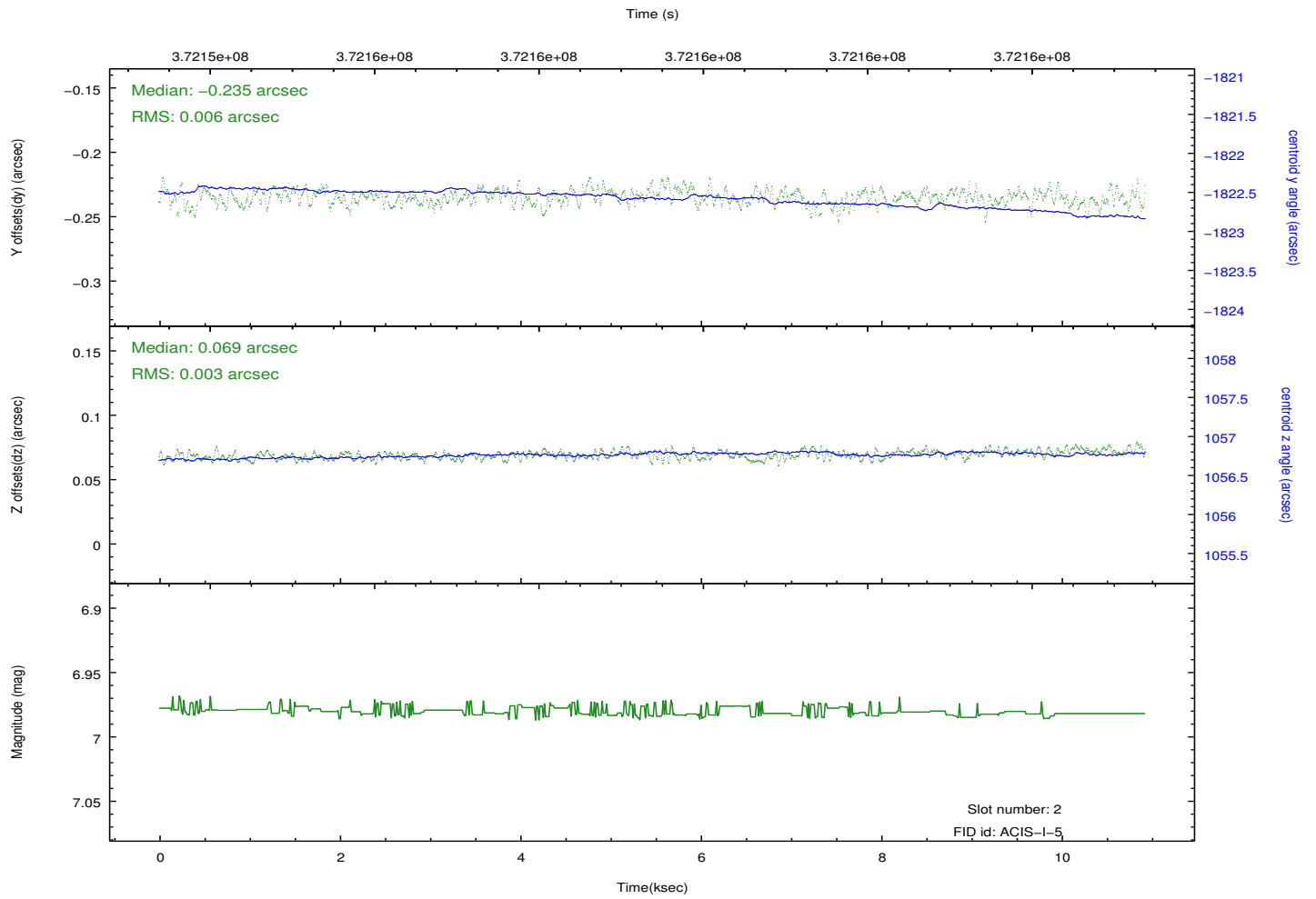
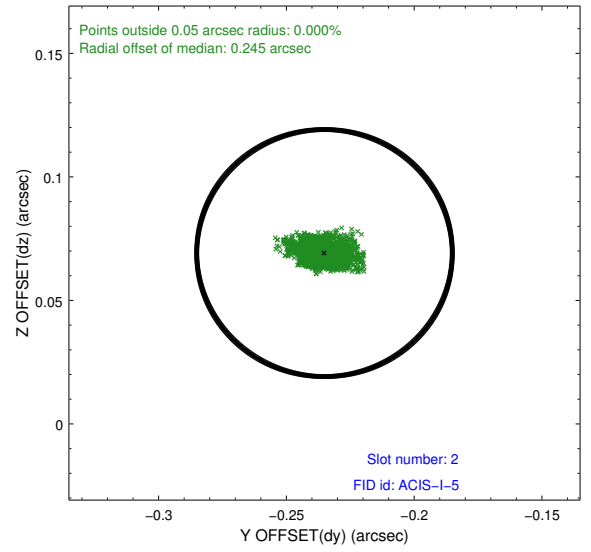
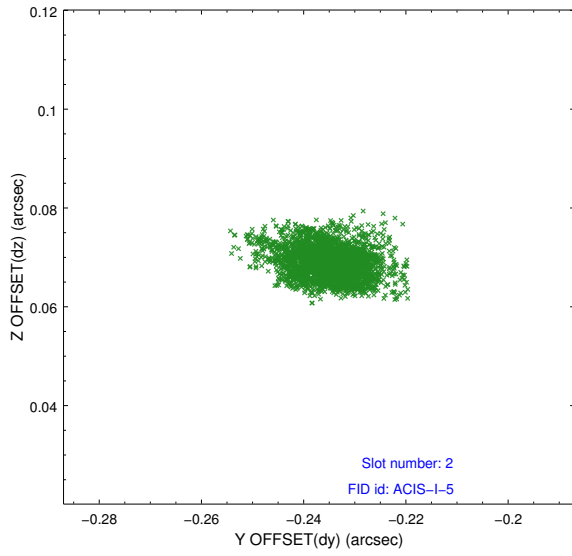
2.5.1 Slot 0



2.5.2 Slot 1



2.5.3 Slot 2



A Summary

A.1 Status

V&V Scientist	Jen Lauer
V&V Date (YYYY-MM-DD)	2012.06.19
V&V Edition	1
V&V Disposition and Status	OK
V&V Charge Time	10.924799959362

A.2 Comments

Joint Proposal: CX0-HST