

V&V Reference Report

L2 ASCDS Version : 8.4.4

Observation 10342 - L2 Version 2
Chandra X-Ray Center

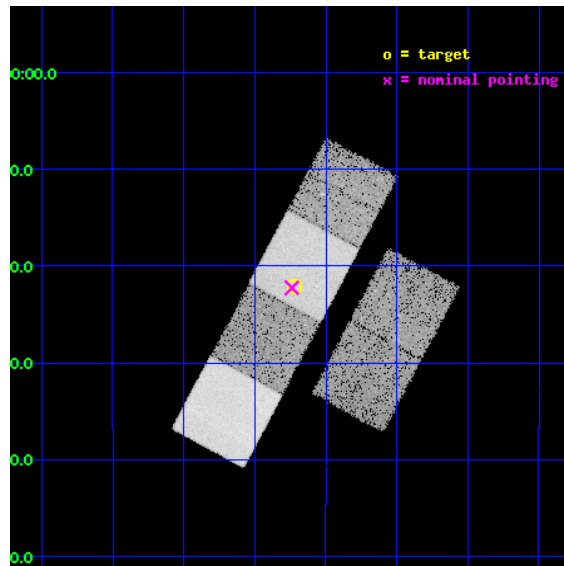
L2 Processing Date : May 23 2012

Contents

1	Front	2
2	OBI	3
2.1	OBI	3
2.1.1	Images	3
2.1.2	Bias	3
2.1.3	Parameters	4
2.1.4	Events	4
2.2	Compared Parameters	5
2.3	Aspect	6
2.4	Star Slots	9
2.4.1	Slot 3	9
2.4.2	Slot 4	10
2.4.3	Slot 5	11
2.4.4	Slot 6	12
2.4.5	Slot 7	13
2.5	FID Slots	14
2.5.1	Slot 0	14
2.5.2	Slot 1	15
2.5.3	Slot 2	16
A	Summary	17
A.1	Status	17
A.2	Comments	17

1 Front

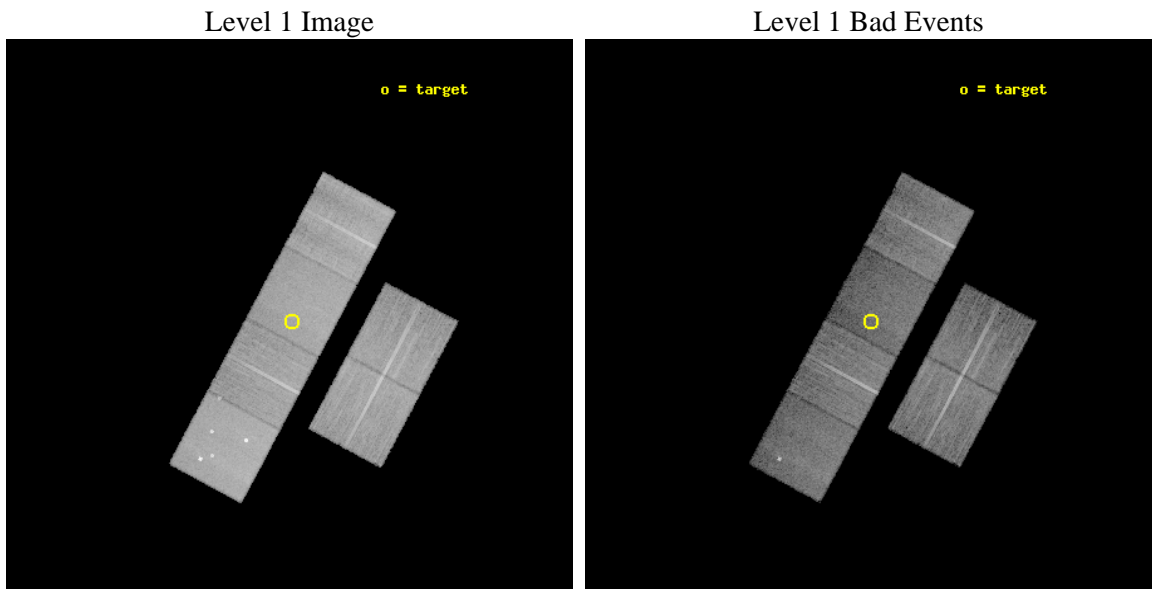
seq_num	701885	Sequence number
obs_id	10342	Observation id
title	Evolution of Activity in Massive Gas-rich Mergers: The X-ray Perspective	Proposal title
observer	Prof. Sylvain Veilleux	Principal investigator
object	F00091-0738	Source name
dtcycle	0	
cycle	P	events from which exps? Prim/Second/Both
ra_targ	2.930417	Observer's specified target RA [deg]
dec_targ	-7.368556	Observer's specified target Dec [deg]
ra_nom	2.9346455026473	Nominal RA [deg]
dec_nom	-7.3709628776686	Nominal Dec [deg]
roll_nom	298.15717295911	Nominal Roll [deg]
revision	2	Processing version of data
ontime	15177.599943519	Sum of GTIs [s]
livetime	14985.41203418	Livetime [s]
ontime2	15174.358943105	Sum of GTIs [s]
ontime3	15177.599943519	Sum of GTIs [s]
ontime5	15177.599943519	Sum of GTIs [s]
ontime6	15177.599943519	Sum of GTIs [s]
ontime7	15177.599943519	Sum of GTIs [s]
ontime8	15174.358923316	Sum of GTIs [s]
l2events	186453	Number of level 2 events



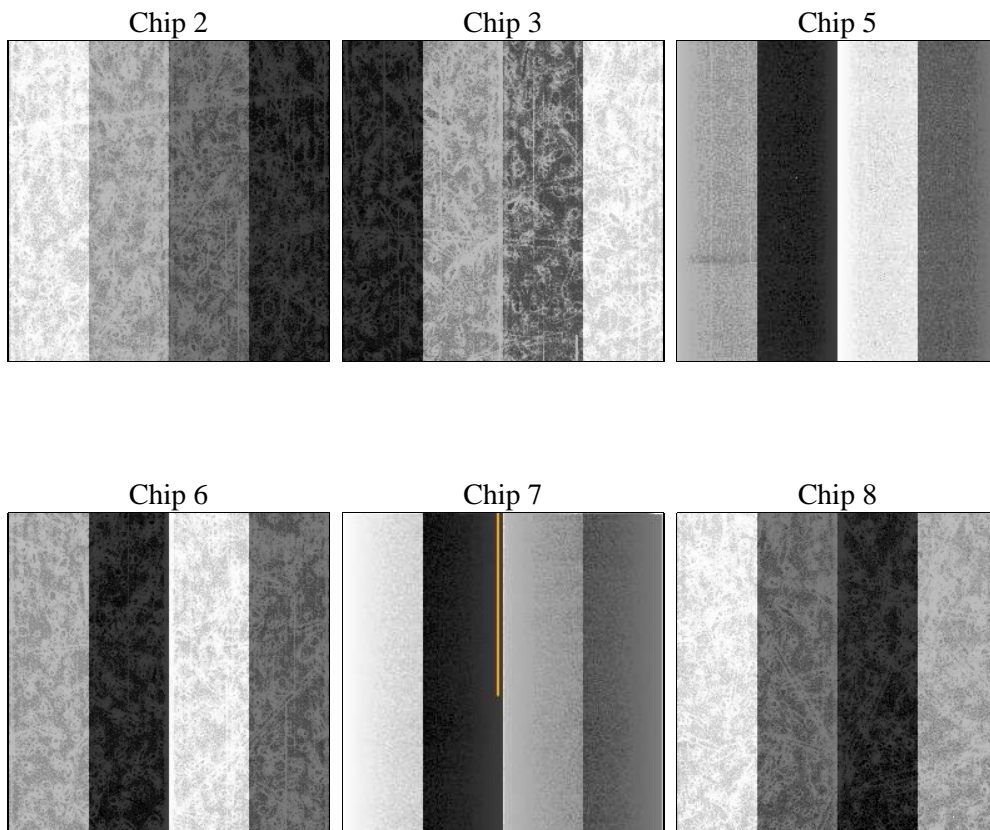
2 OBI

2.1 OBI

2.1.1 Images



2.1.2 Bias



2.1.3 Parameters

obi_num	0	Obi number	sched_exp_time	15000.000000	[s] Scheduled observation exposure time
ascdsver	8.4.4	Processing system revision	ontime	15177.599943519	Sum of GTIs [s]
caldbver	4.4.9	 	ontime2	15174.358943105	Sum of GTIs [s]
date	2012-05-23T12:20:22	Date and time of file creation	ontime3	15177.599943519	Sum of GTIs [s]
revision	2	Processing version of data	ontime5	15177.599943519	Sum of GTIs [s]
			ontime6	15177.599943519	Sum of GTIs [s]
			ontime7	15177.599943519	Sum of GTIs [s]
			ontime8	15174.358923316	Sum of GTIs [s]
			l1events	852601	Number of level 1 events

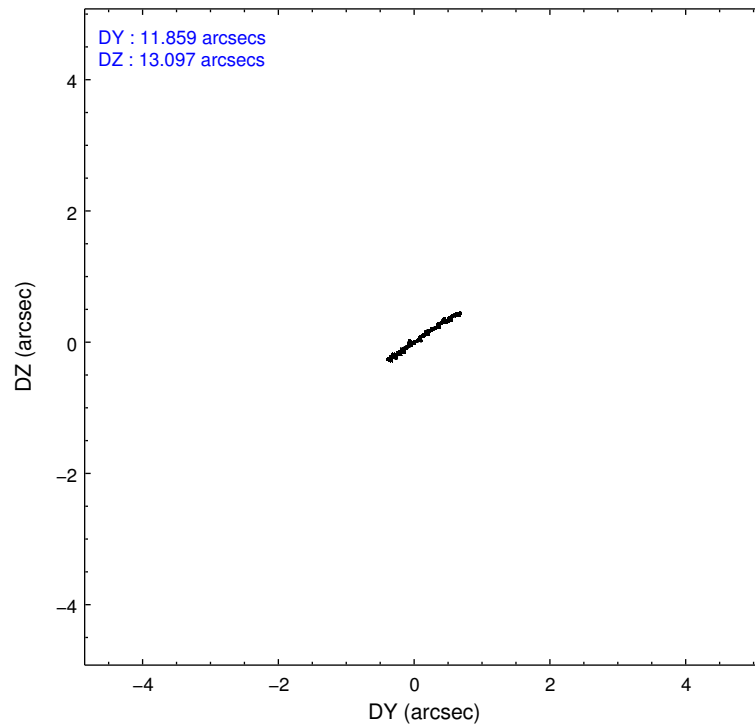
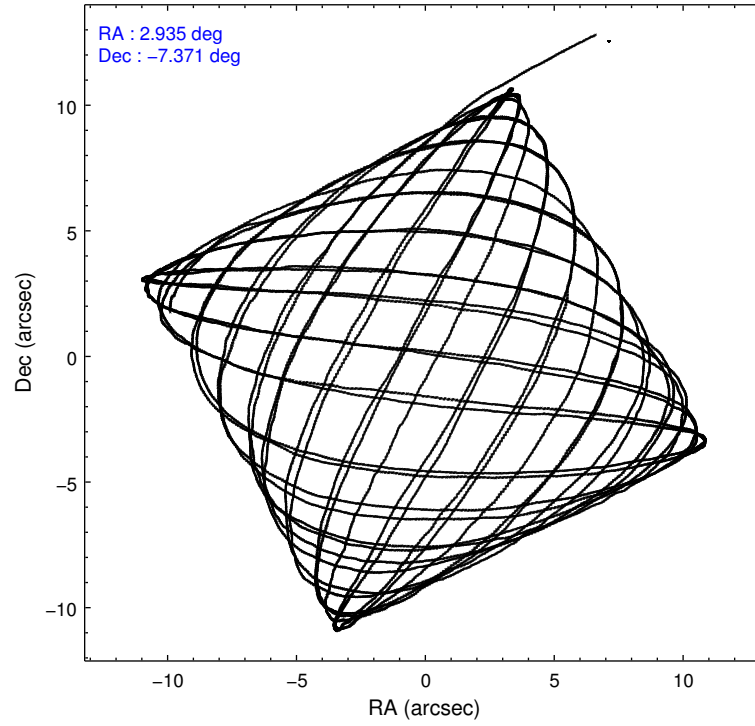
2.1.4 Events

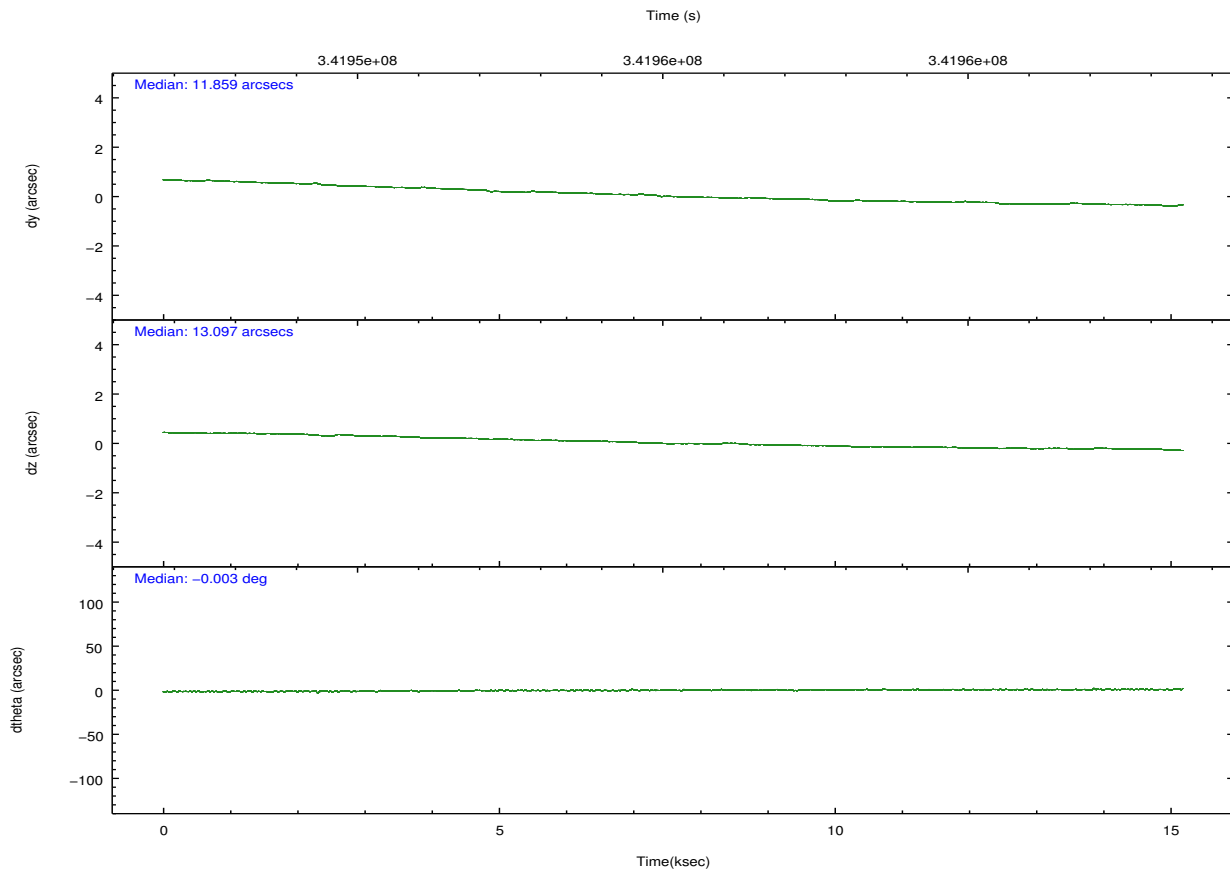
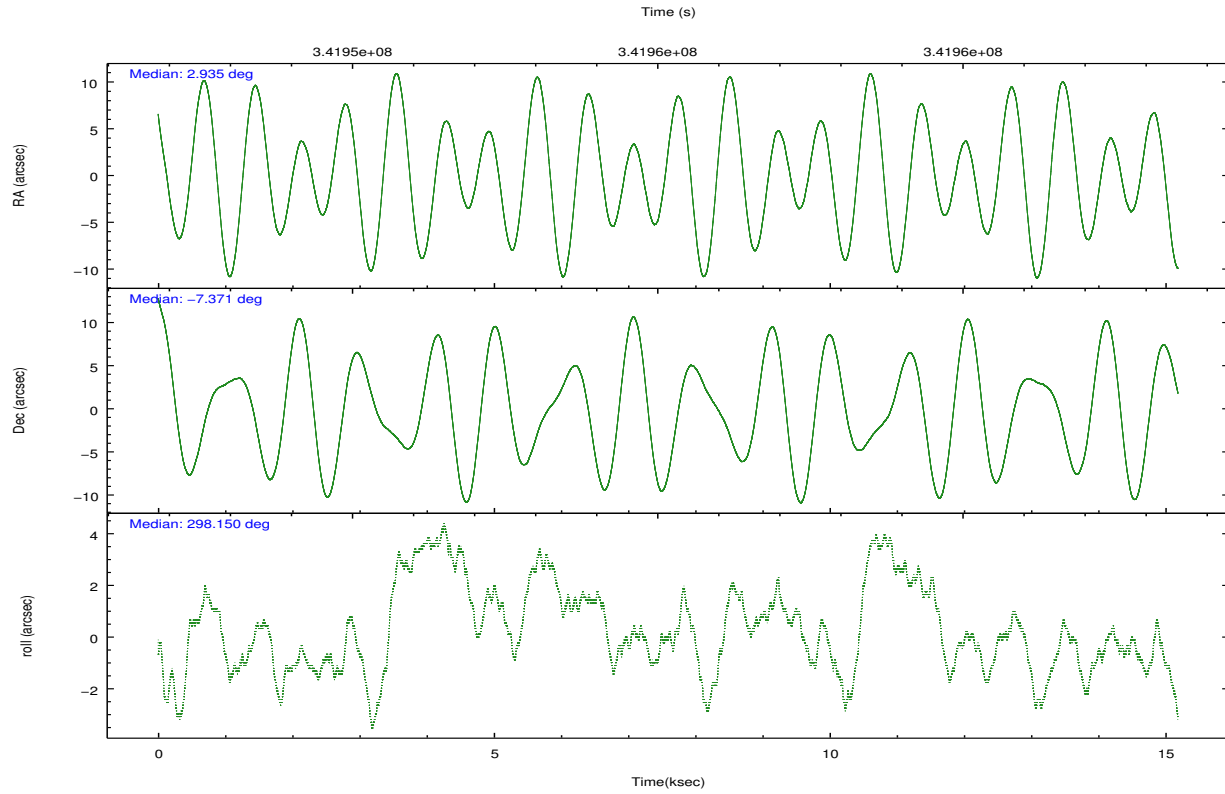
	ccd 2	ccd 3	ccd 5	ccd 6	ccd 7	ccd 8		ccd 2	ccd 3	ccd 5	ccd 6	ccd 7	ccd 8
level 1 events	133279	117736	182298	124666	139580	155042	grade 0 events	4263	4215	13665	4569	5706	11177
rejected events	121194	106029	89538	111765	77097	117313		3%	3%	7%	3%	4%	7%
rejected %	90%	90%	49%	89%	55%	75%	grade 1 events	75	76	405	75	169	115
								0%	0%	0%	0%	0%	0%
							grade 2 events	2895	2526	27200	2795	12450	8736
								2%	2%	14%	2%	8%	5%
							grade 3 events	1323	1263	3575	1446	5666	3981
								0%	1%	1%	1%	4%	2%
							grade 4 events	1260	1337	3233	1360	5517	3753
								0%	1%	1%	1%	3%	2%
							grade 5 events	4294	5074	13689	5116	14466	7394
								3%	4%	7%	4%	10%	4%
							grade 6 events	2373	2394	45348	2760	33318	10185
								1%	2%	24%	2%	23%	6%
							grade 7 events	116796	100851	75183	106545	62288	109701
								87%	85%	41%	85%	44%	70%

2.2 Compared Parameters

Parameter	Planned	Actual	Parameter	Planned	Actual
Instrument	ACIS	ACIS	Obspar format version number	7	7
Detector	ACIS-235678	ACIS-235678	Obspar file type	PREDICTED	ACTUAL
Grating	NONE	NONE	Obspar update status	NONE	UPDATED
Data mode	VFAINT	VFAINT	CCD I0 on	N	N
Observation mode	POINTING	POINTING	CCD I1 on	N	N
[deg] Pointing RA	2.911026	2.934645502647314	CCD I2 on	O1	Y
[deg] Pointing Dec	-7.356884	-7.370962877668635	CCD I3 on	O2	Y
[deg] Pointing Roll	297.997522	298.1571729591055	CCD S0 on	N	N
[mm] SIM focus pos	-0.684267	-0.6828225247311905	CCD S1 on	O3	Y
[mm] SIM defocus	0	0.001444936568705701	CCD S2 on	O4	Y
[mm] SIM translation stage pos	-190.132523	-190.1425803651734	CCD S3 on	Y	Y
[mm] SIM translation stage offset	0	0.01005778216563158	CCD S4 on	O5	Y
[s] Observation start time (MET)	341947760.184000	341946669.36543	CCD S5 on	N	N
Observation start date	2008-11-01T17:28:15	2008-11-01T17:11:09	Number of optional ACIS chips dropped	0	0
[s] Observation end time (MET)	341962760.184000	341963651.56626	On-chip summing requested	N	N
Observation end date	2008-11-01T21:38:15	2008-11-01T21:54:11	Subarray requested	NONE	NONE
Read mode	TIMED	TIMED	Alternating exposures requested	N	N
			[s] Primary exposure time	0.000000	3.2

2.3 Aspect



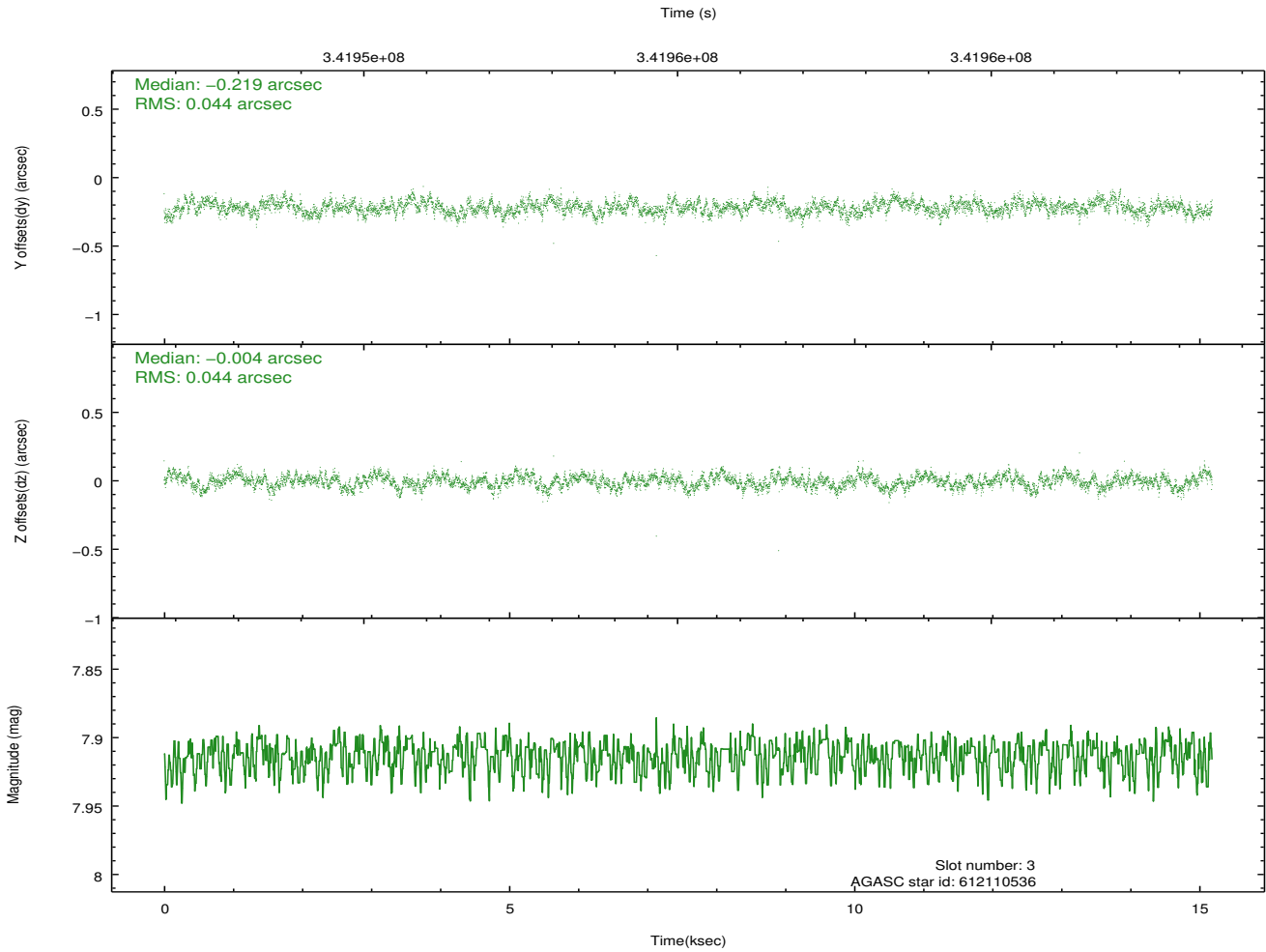
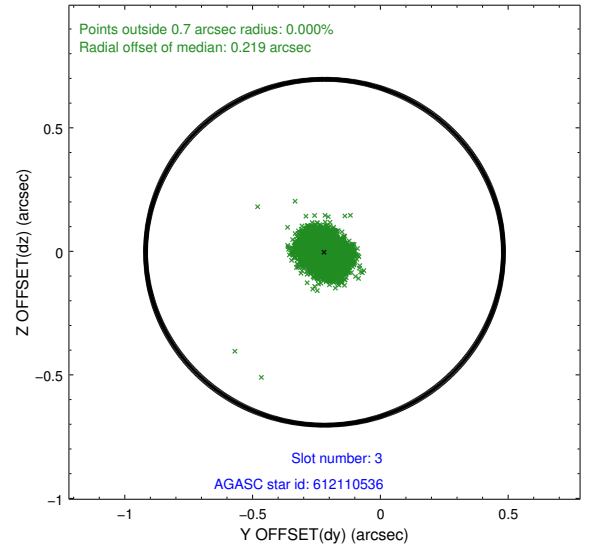
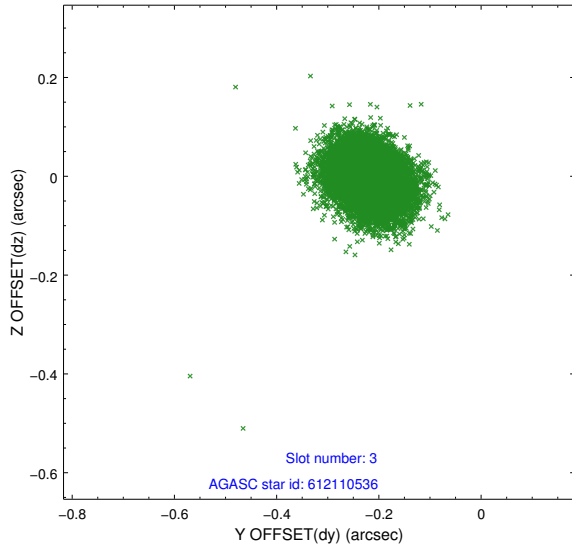


Slot Statistics

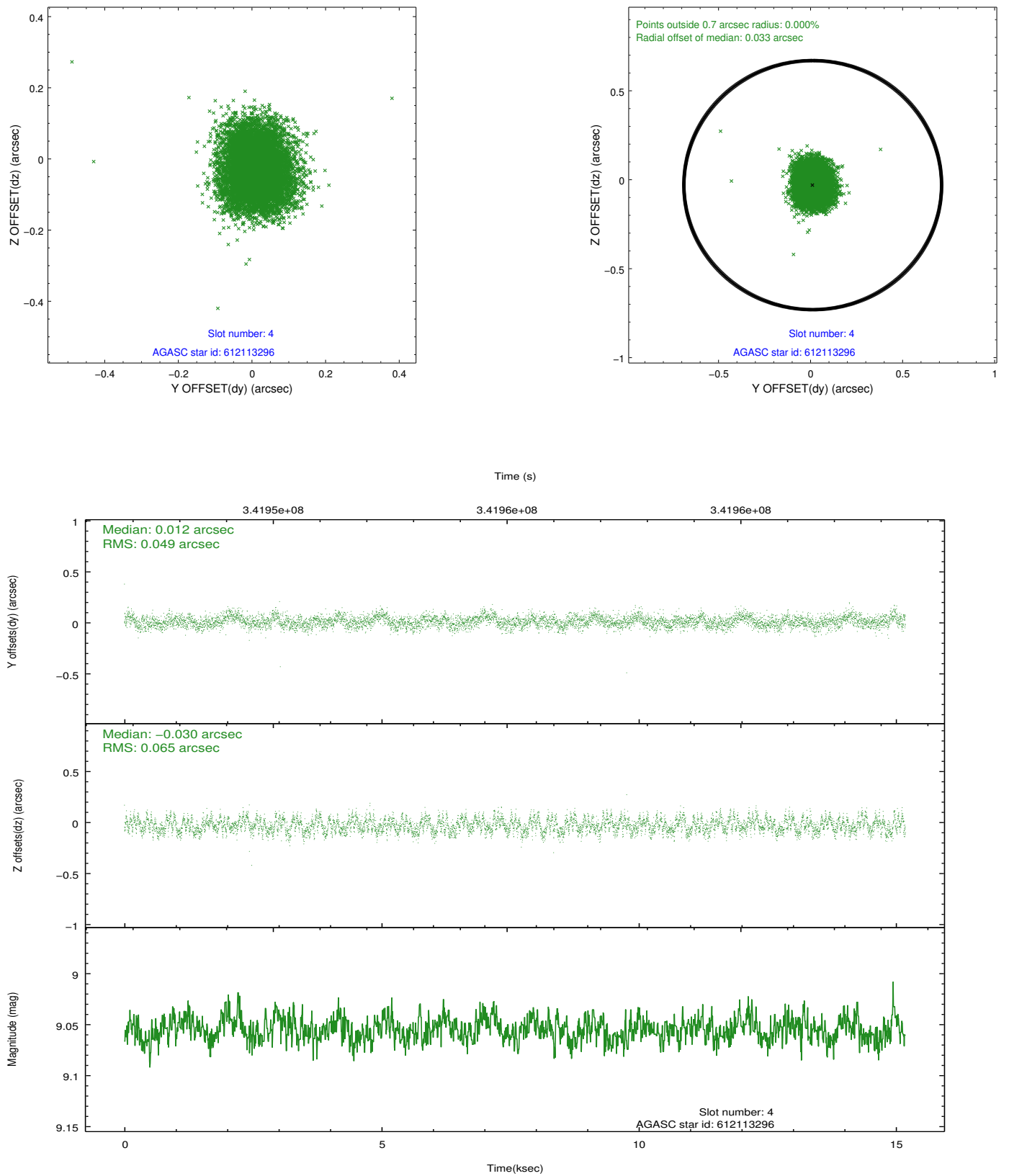
slot	status	id	mag	n_pts	med_dy	med_dz	dr1	dr2	ra	dec	mean_y	mean_z
0	FID	ACIS-S-2	6.92	3704	-0.012	-0.016	0.008	0.013	0.000000	0.000000	-764.85	-1734.43
1	FID	ACIS-S-4	7.01	3704	0.089	0.010	0.011	0.019	0.000000	0.000000	2148.41	173.74
2	FID	ACIS-S-5	7.04	3703	-0.107	0.015	0.012	0.019	0.000000	0.000000	-1817.39	167.79
3	GUIDE	612110536	7.91	7404	-0.219	-0.004	0.066	0.104	3.224517	-6.911800	-888.58	1741.21
4	GUIDE	612113296	9.05	7400	0.012	-0.030	0.087	0.137	2.787620	-7.376275	-144.71	-421.96
5	GUIDE	612113664	9.49	7398	-0.029	0.039	0.099	0.164	2.713174	-7.256436	-650.47	-454.24
6	GUIDE	689569912	9.26	7403	0.168	-0.063	0.080	0.136	3.669086	-7.681624	2304.50	1838.17
7	GUIDE	689570528	8.71	7399	0.068	0.061	0.063	0.107	3.025386	-7.702016	1289.41	-222.54

2.4 Star Slots

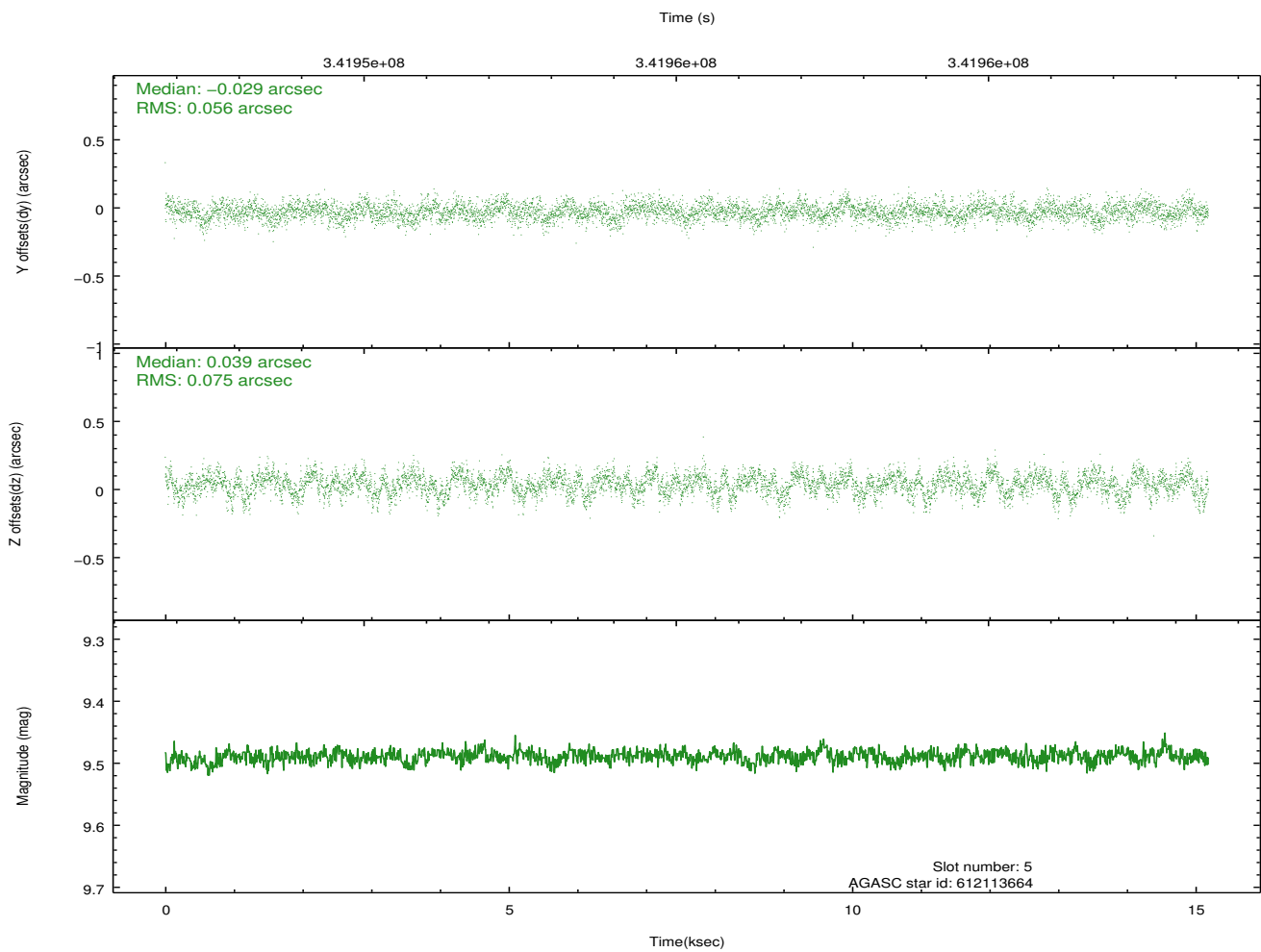
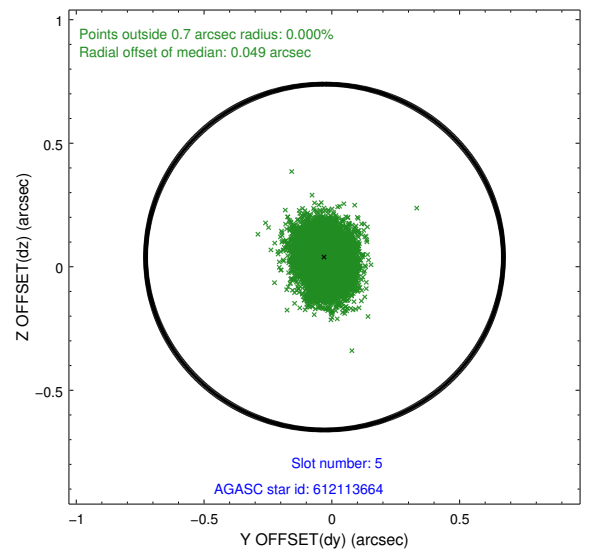
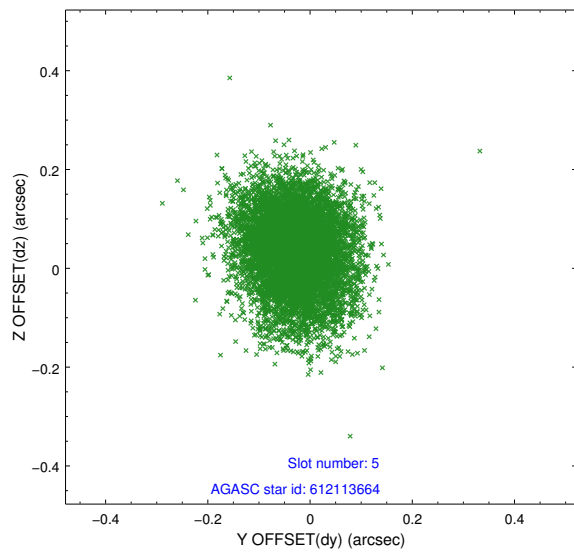
2.4.1 Slot 3



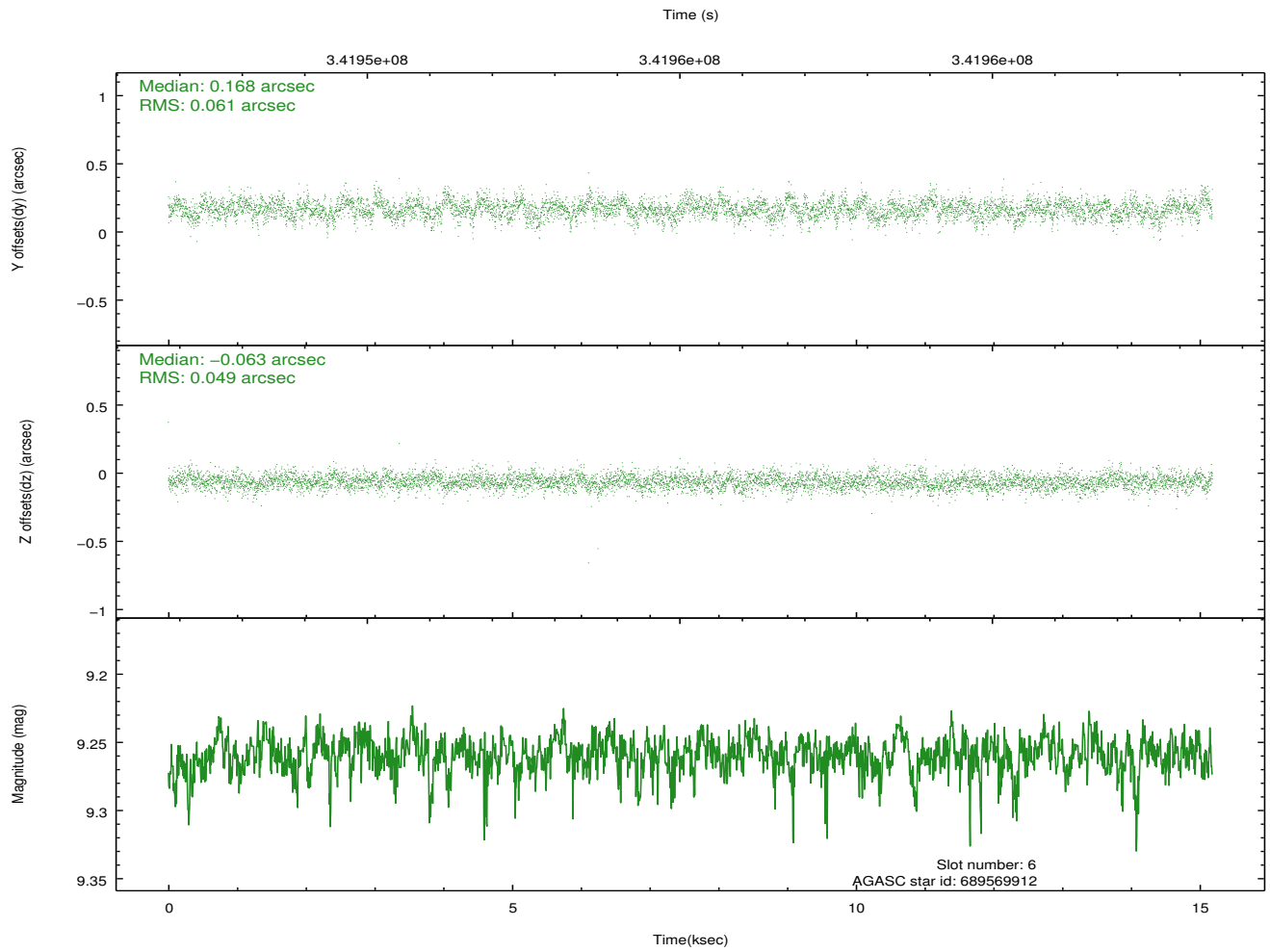
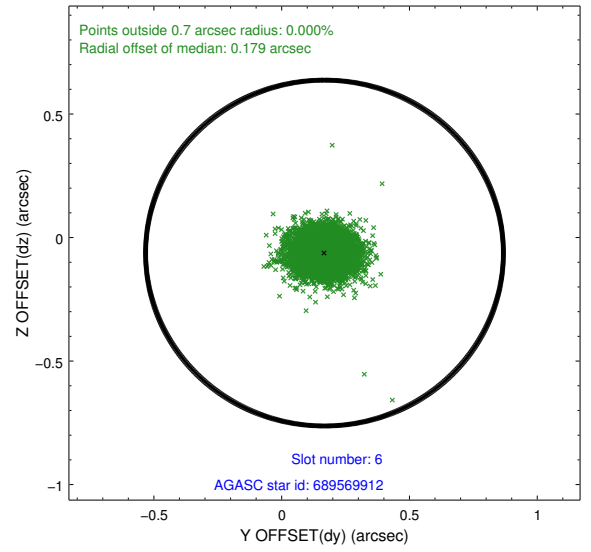
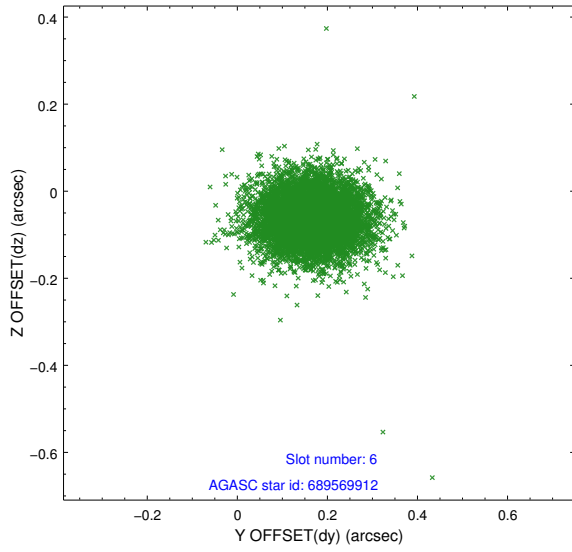
2.4.2 Slot 4



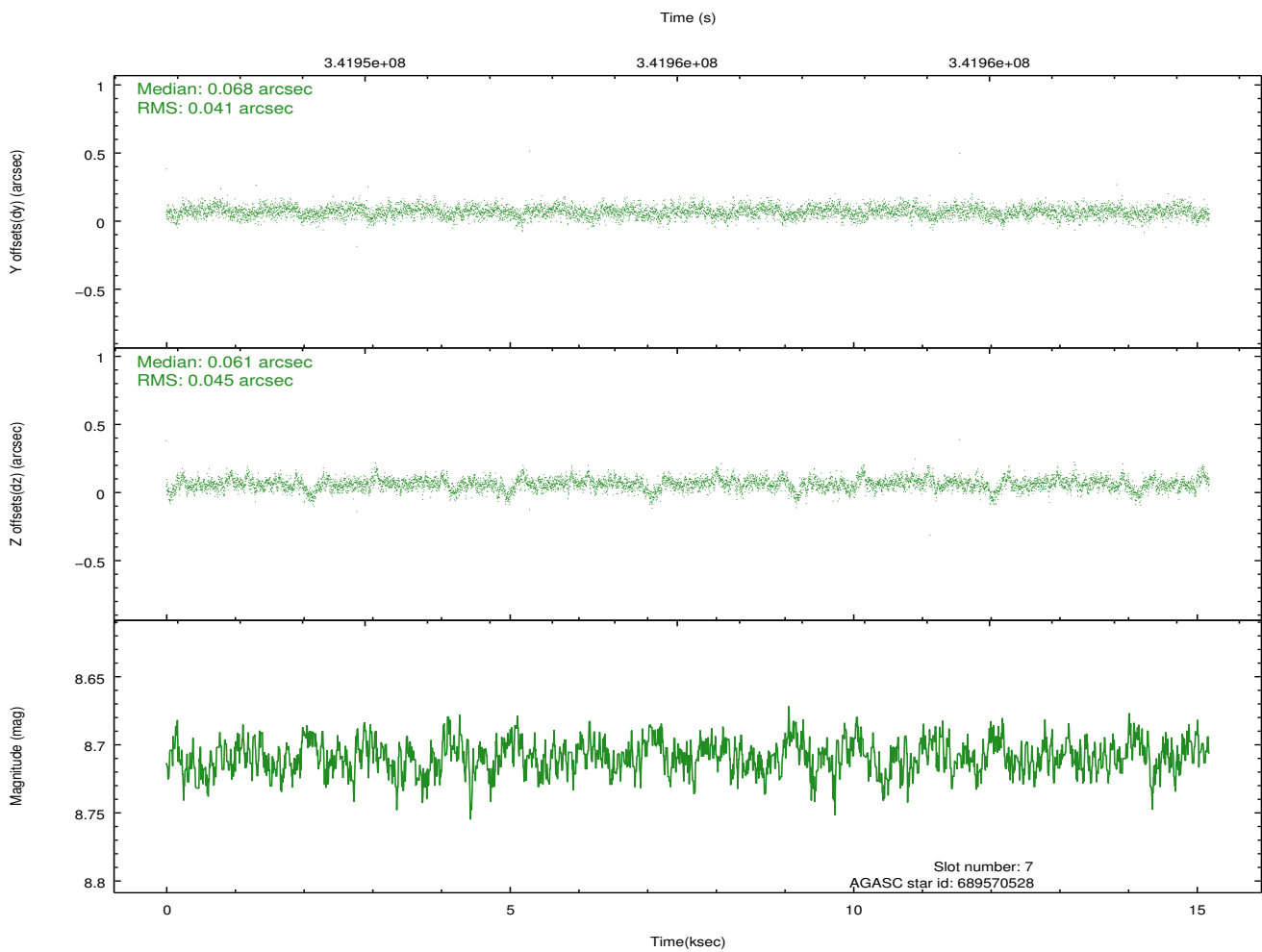
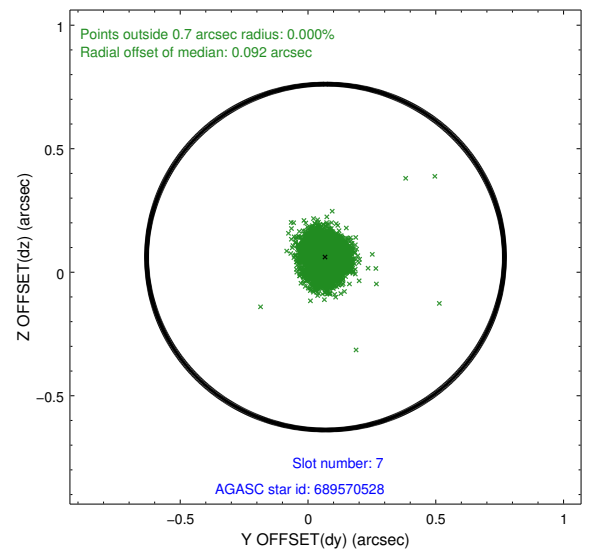
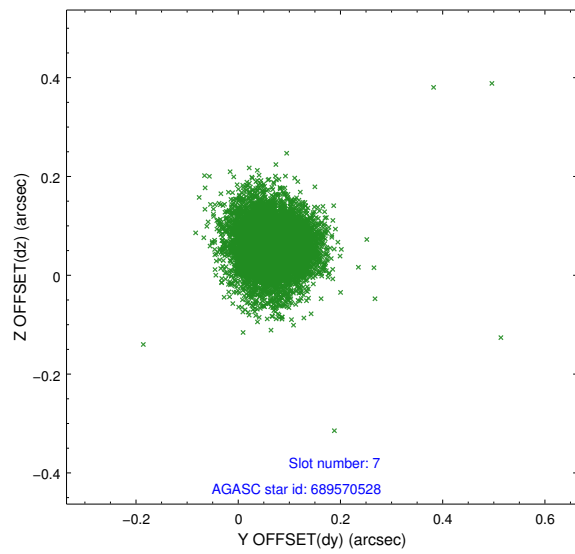
2.4.3 Slot 5



2.4.4 Slot 6

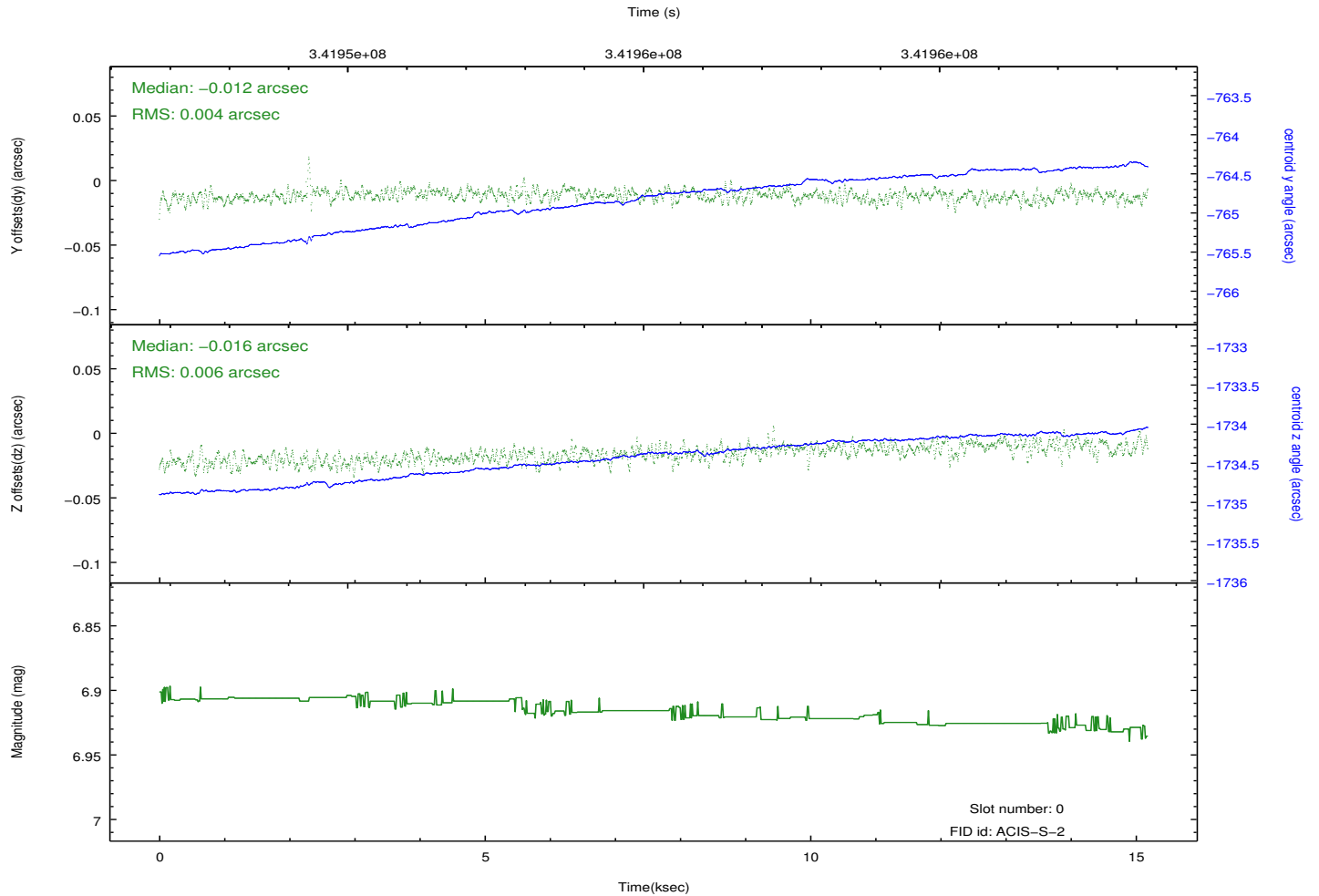
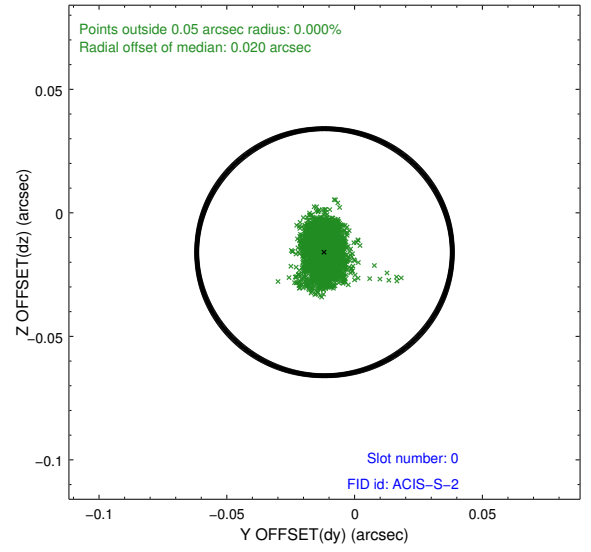
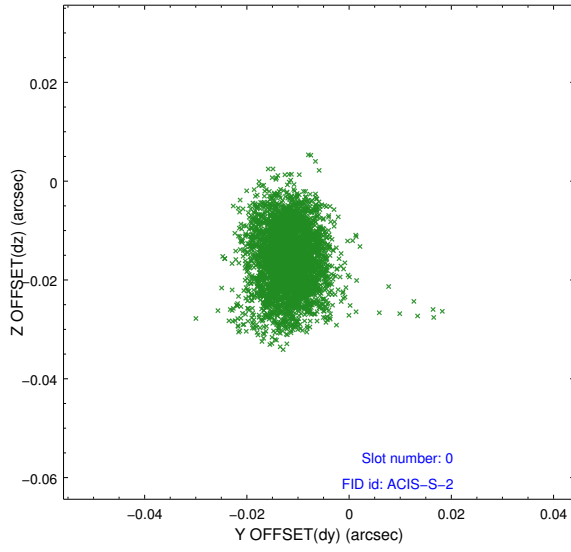


2.4.5 Slot 7

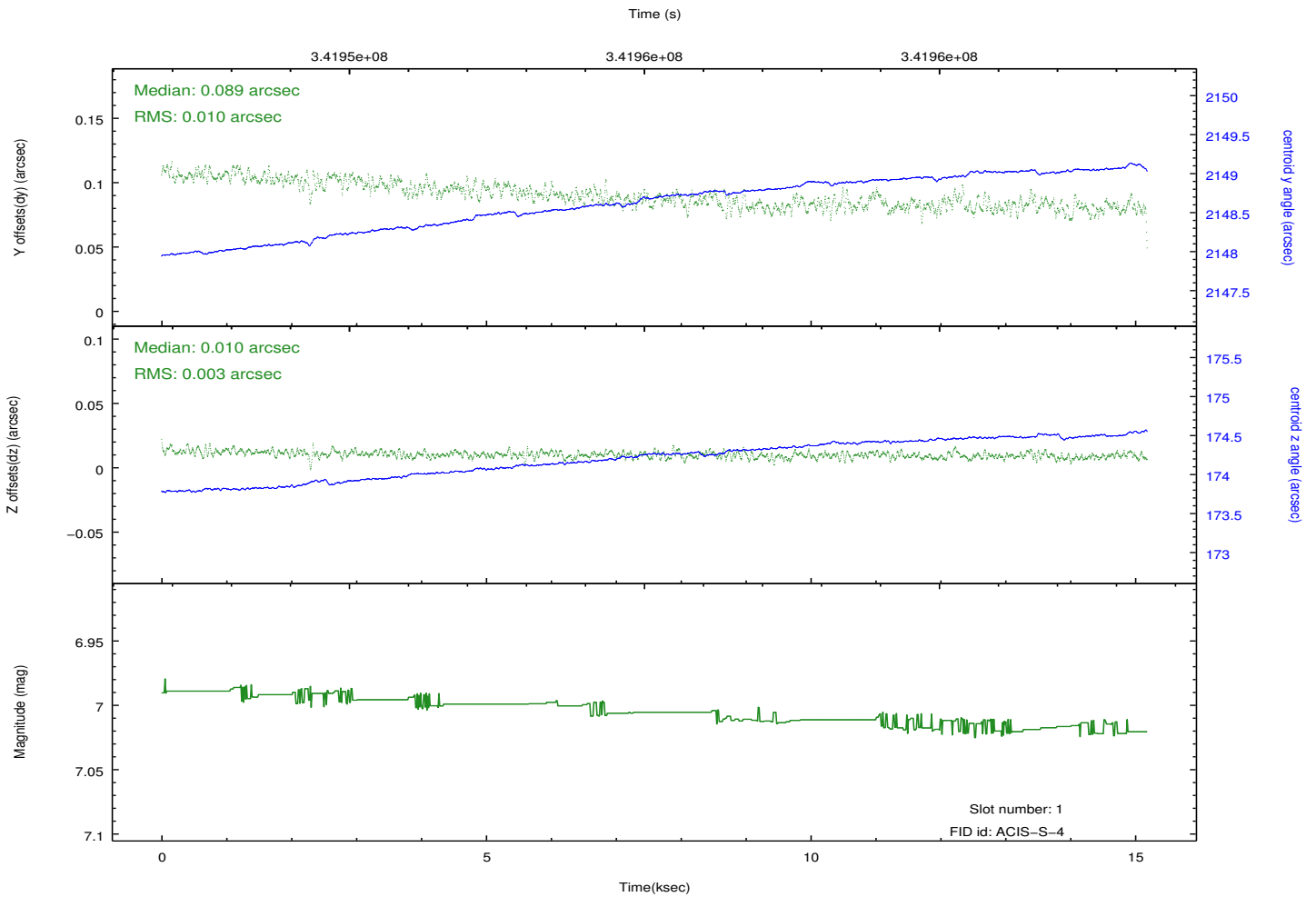
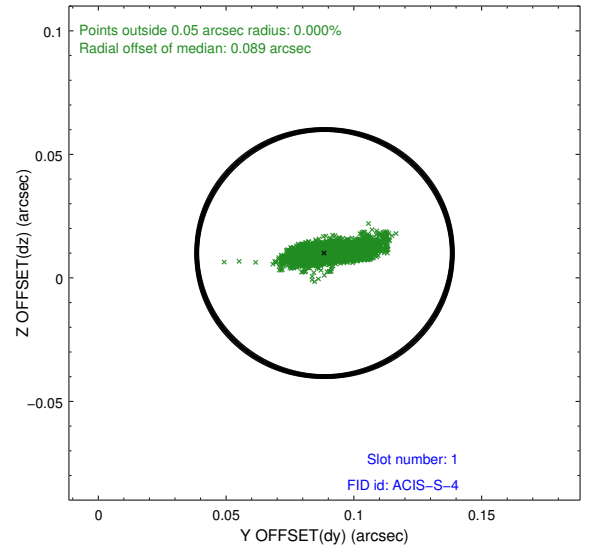
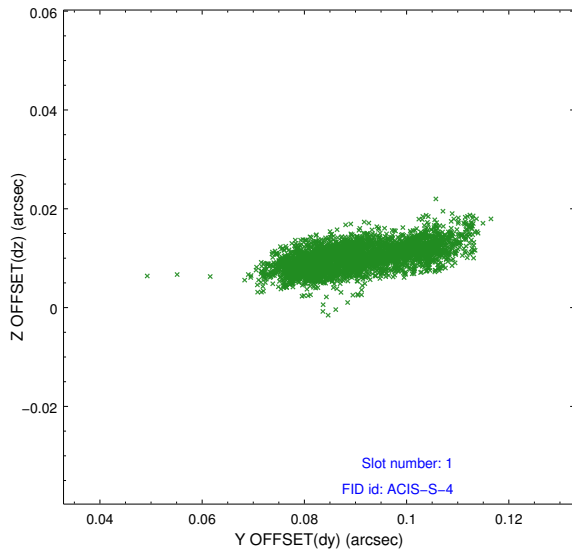


2.5 FID Slots

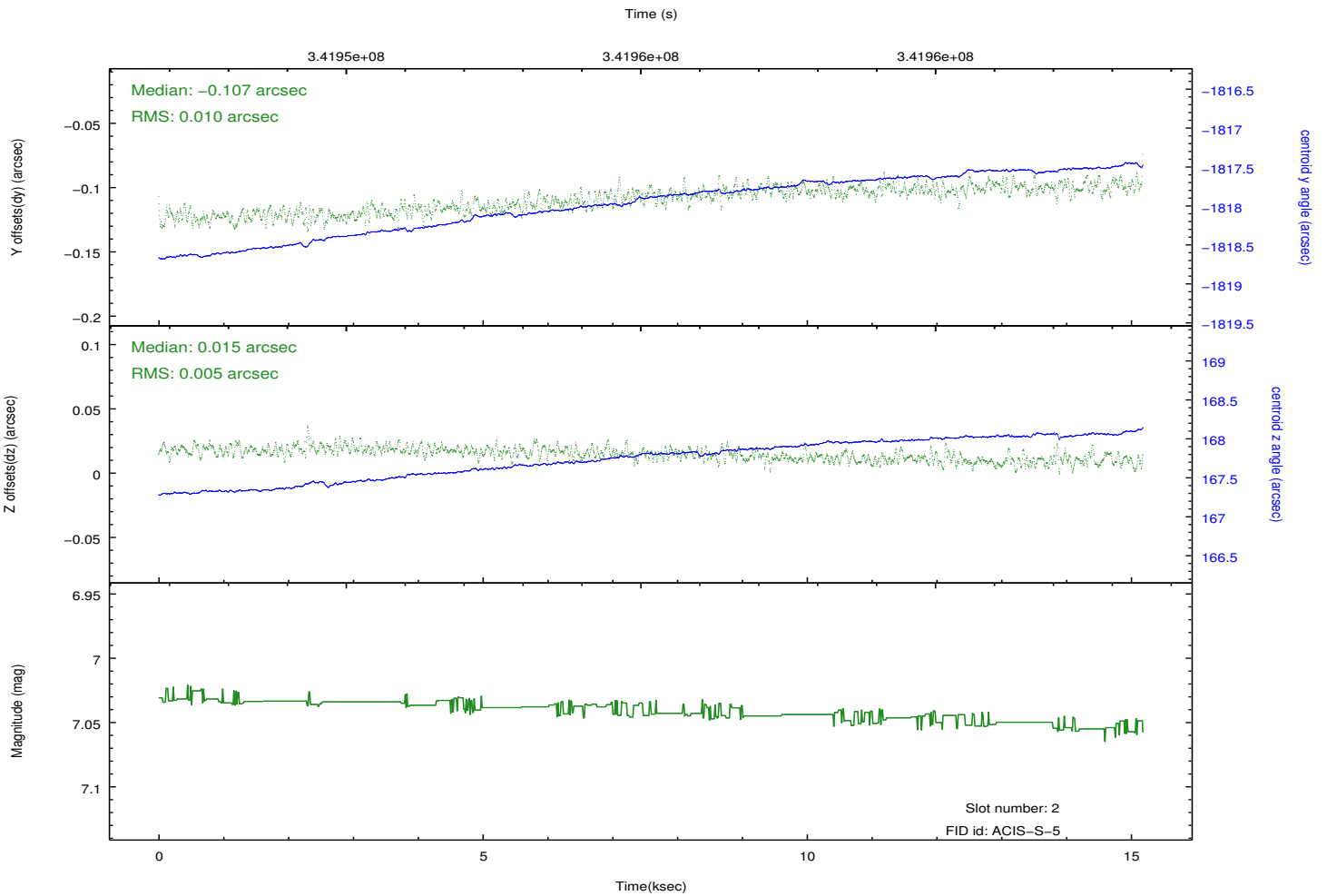
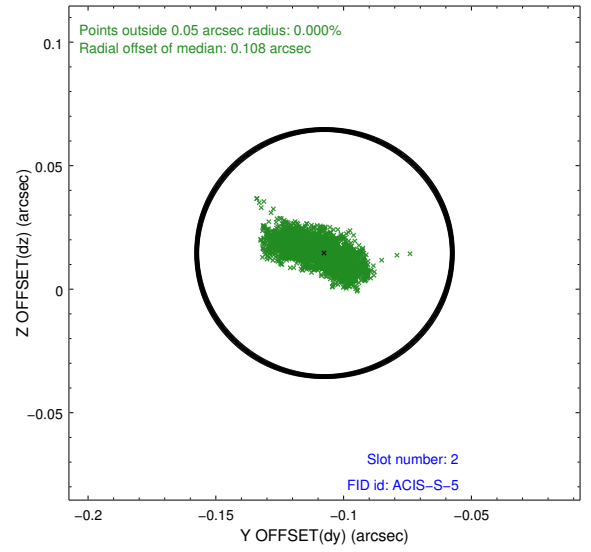
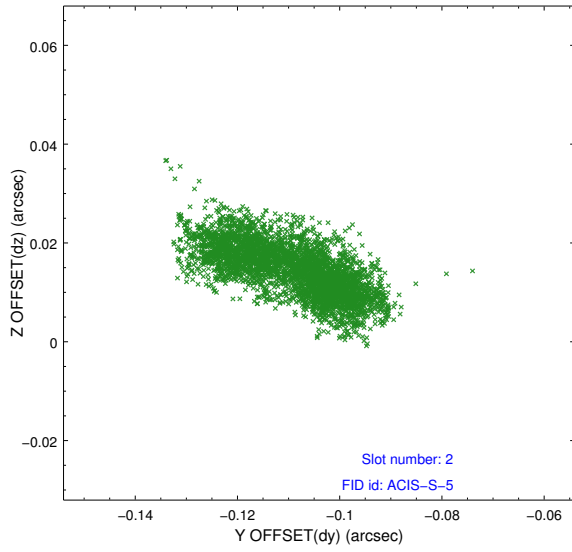
2.5.1 Slot 0



2.5.2 Slot 1



2.5.3 Slot 2



A Summary

A.1 Status

V&V Scientist	Jen Lauer
V&V Date (YYYY-MM-DD)	2012.05.31
V&V Edition	1
V&V Disposition and Status	OK
V&V Charge Time	15.1775999

A.2 Comments