

# V&V Reference Report

## L2 ASCDS Version : 8.4.5

Observation 10362 - L2 Version 2  
Chandra X-Ray Center

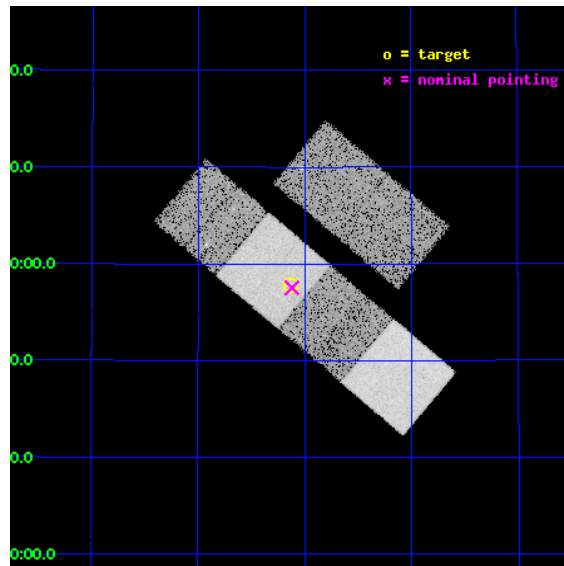
L2 Processing Date : Jun 10 2012

## Contents

<b>1</b>	<b>Front</b>	<b>2</b>
<b>2</b>	<b>OBI</b>	<b>3</b>
2.1	OBI . . . . .	3
2.1.1	Images . . . . .	3
2.1.2	Bias . . . . .	3
2.1.3	Parameters . . . . .	4
2.1.4	Events . . . . .	4
2.2	Compared Parameters . . . . .	5
2.3	Aspect . . . . .	6
2.4	Star Slots . . . . .	9
2.4.1	Slot 3 . . . . .	9
2.4.2	Slot 4 . . . . .	10
2.4.3	Slot 5 . . . . .	11
2.4.4	Slot 6 . . . . .	12
2.4.5	Slot 7 . . . . .	13
2.5	FID Slots . . . . .	14
2.5.1	Slot 0 . . . . .	14
2.5.2	Slot 1 . . . . .	15
2.5.3	Slot 2 . . . . .	16
<b>A</b>	<b>Summary</b>	<b>17</b>
A.1	Status . . . . .	17
A.2	Comments . . . . .	17

# 1 Front

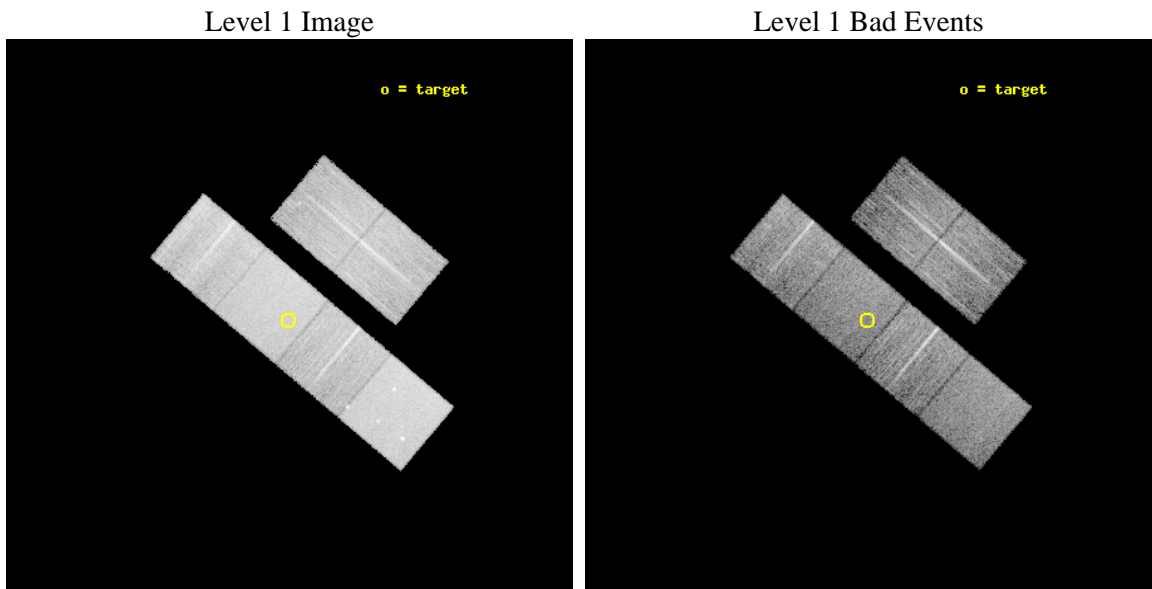
seq_num	701905	Sequence number
obs_id	10362	Observation id
title	Testing the Radiative-Driving Hypothesis of Quasar Outflows	Propos
observer	Dr. Rajib Ganguly	Principal investigator
object	SDSS J1644+4157	Source name
dtycycle	0	&#160
cycle	P	events from which exps? Prim/Second/Both
ra_targ	251.032083	Observer's specified target RA [deg]
dec_targ	41.963444	Observer's specified target Dec [deg]
ra_nom	251.03005674636	Nominal RA [deg]
dec_nom	41.958897414488	Nominal Dec [deg]
roll_nom	220.14498979872	Nominal Roll [deg]
revision	2	Processing version of data
ontime	7948.799970448	Sum of GTIs [s]
livetime	7848.1474790295	Livetime [s]
ontime2	7948.799970448	Sum of GTIs [s]
ontime3	7948.799970448	Sum of GTIs [s]
ontime5	7948.799970448	Sum of GTIs [s]
ontime6	7948.799970448	Sum of GTIs [s]
ontime7	7948.799970448	Sum of GTIs [s]
ontime8	7948.799970448	Sum of GTIs [s]
l2events	143373	Number of level 2 events



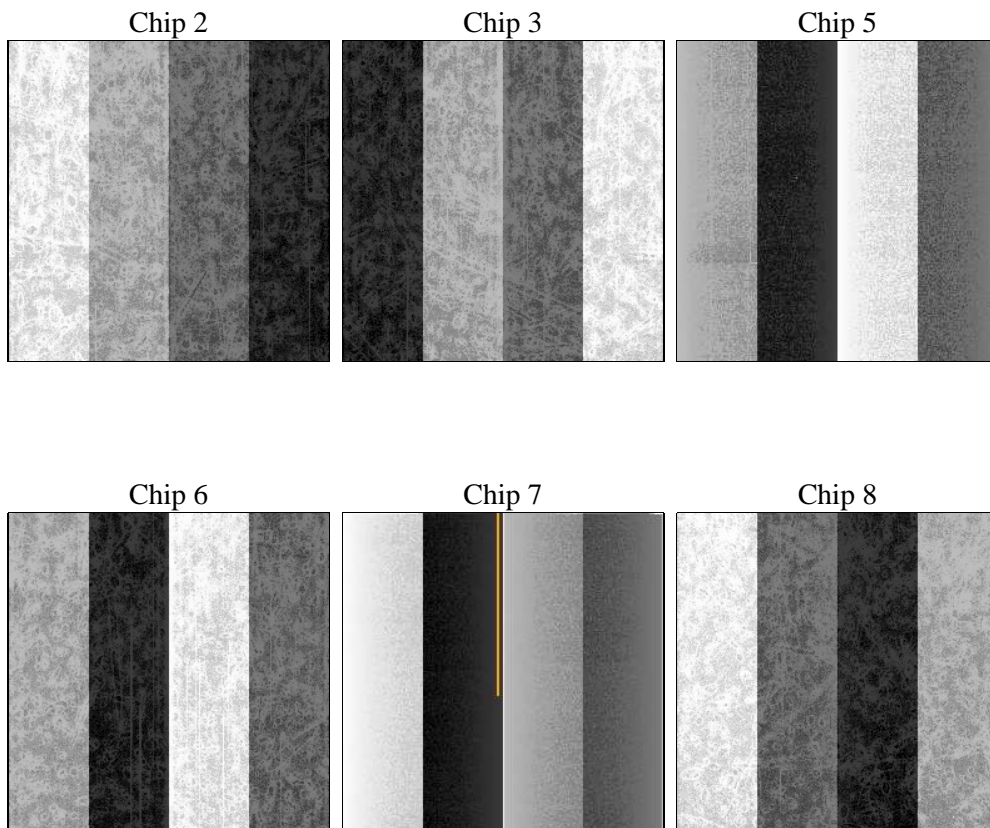
## 2 OBI

### 2.1 OBI

#### 2.1.1 Images



#### 2.1.2 Bias



### 2.1.3 Parameters

obi_num	0	Obi number	sched_exp_time	8000.000000	[s] Scheduled observation exposure time
ascdsver	8.4.5	Processing system revision	ontime	7948.799970448	Sum of GTIs [s]
caldbver	4.4.10	&#160	ontime2	7948.799970448	Sum of GTIs [s]
date	2012-06-10T11:35:45	Date and time of file creation	ontime3	7948.799970448	Sum of GTIs [s]
revision	2	Processing version of data	ontime5	7948.799970448	Sum of GTIs [s]
			ontime6	7948.799970448	Sum of GTIs [s]
			ontime7	7948.799970448	Sum of GTIs [s]
			ontime8	7948.799970448	Sum of GTIs [s]
			l1events	611405	Number of level 1 events

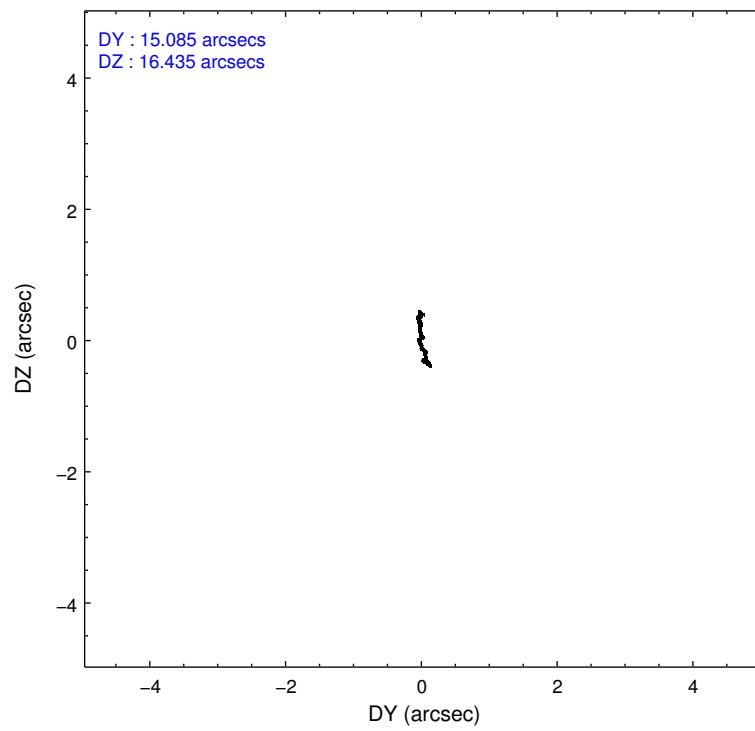
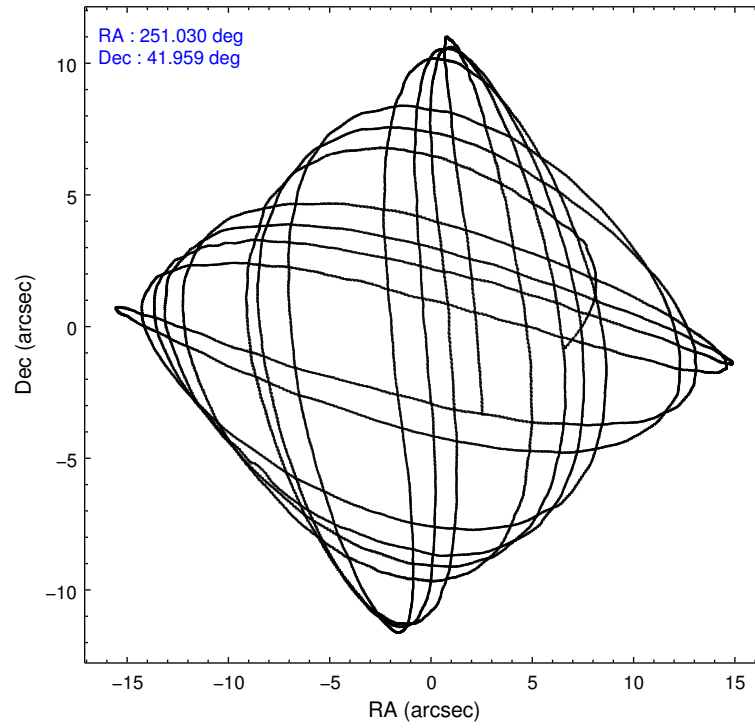
### 2.1.4 Events

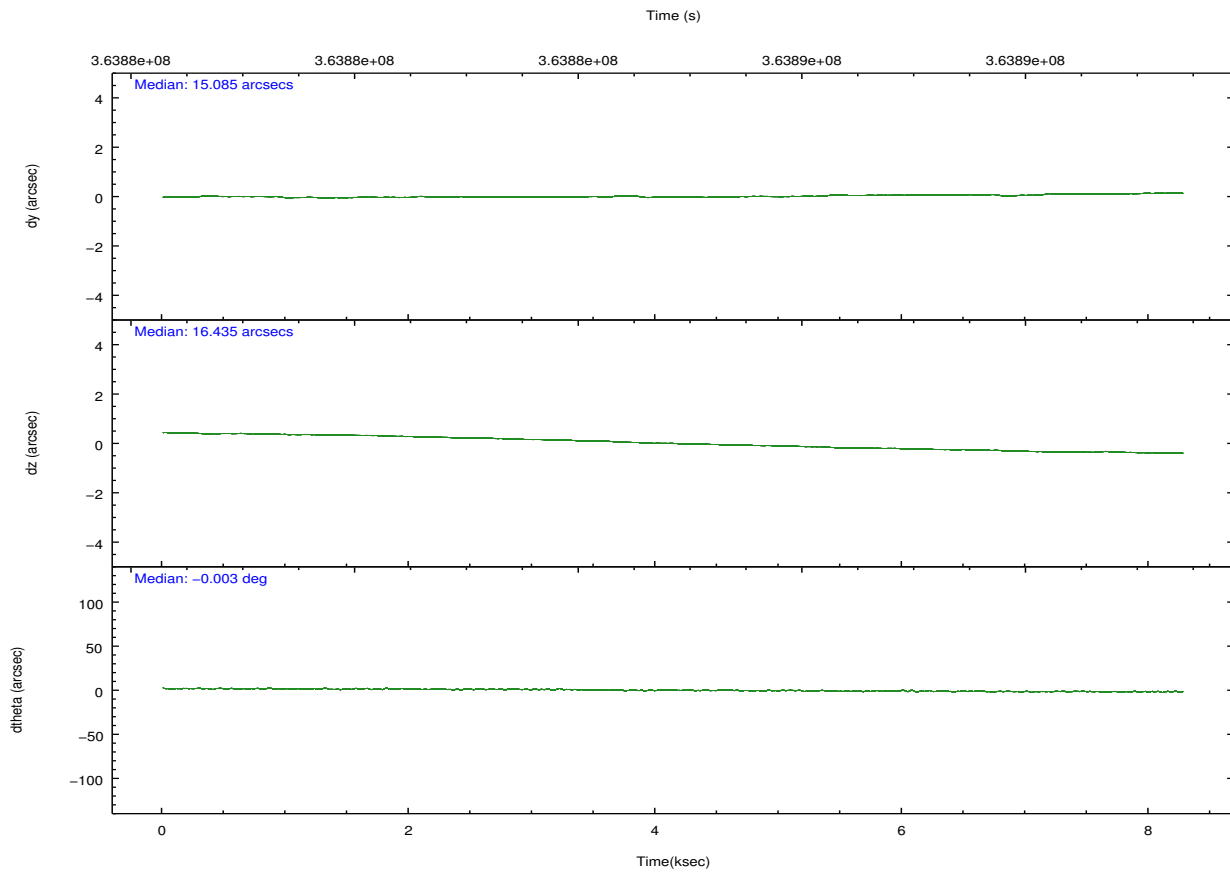
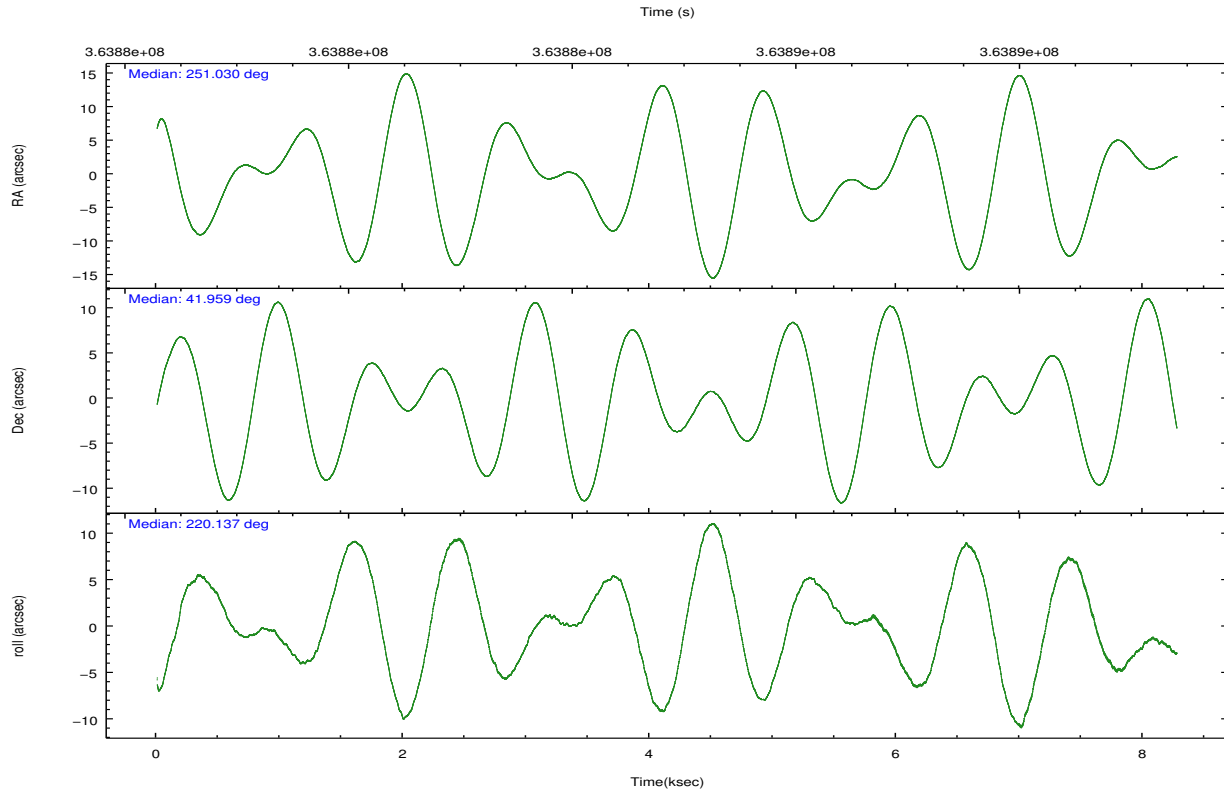
	ccd 2	ccd 3	ccd 5	ccd 6	ccd 7	ccd 8		ccd 2	ccd 3	ccd 5	ccd 6	ccd 7	ccd 8
level 1 events	87022	81376	131792	85159	118654	107402	grade 0 events	4638	4483	4874	3897	4259	7979
rejected events	76531	71205	70908	74908	68891	82193		5%	5%	3%	4%	3%	7%
rejected %	87%	87%	53%	87%	58%	76%	grade 1 events	68	62	218	43	135	89
								0%	0%	0%	0%	0%	0%
							grade 2 events	2218	2007	19048	2389	10237	5875
								2%	2%	14%	2%	8%	5%
							grade 3 events	877	959	2202	982	4124	2604
								1%	1%	1%	1%	3%	2%
							grade 4 events	993	962	1990	914	4119	2356
								1%	1%	1%	1%	3%	2%
							grade 5 events	3476	4112	9246	3963	11079	5441
								3%	5%	7%	4%	9%	5%
							grade 6 events	1765	1765	32796	2073	27036	6398
								2%	2%	24%	2%	22%	5%
							grade 7 events	72987	67026	61418	70898	57665	76660
								83%	82%	46%	83%	48%	71%

## 2.2 Compared Parameters

Parameter	Planned	Actual	Parameter	Planned	Actual
Instrument	ACIS	ACIS	Obspar format version number	7	7
Detector	ACIS-235678	ACIS-235678	Obspar file type	PREDICTED	ACTUAL
Grating	NONE	NONE	Obspar update status	NONE	UPDATED
Data mode	FAINT	FAINT	CCD I0 on	N	N
Observation mode	POINTING	POINTING	CCD I1 on	N	N
[deg] Pointing RA	251.042064	251.0300567463646	CCD I2 on	O1	Y
[deg] Pointing Dec	41.984682	41.95889741448829	CCD I3 on	O2	Y
[deg] Pointing Roll	219.980329	220.1449897987182	CCD S0 on	N	N
[mm] SIM focus pos	-0.684267	-0.6828225247311905	CCD S1 on	Y	Y
[mm] SIM defocus	0	0.001444936568705701	CCD S2 on	Y	Y
[mm] SIM translation stage pos	-190.132523	-190.1400660498719	CCD S3 on	Y	Y
[mm] SIM translation stage offset	0	0.00754346686406393	CCD S4 on	Y	Y
[s] Observation start time (MET)	363880987.184000	363879982.79202	CCD S5 on	N	N
Observation start date	2009-07-13T14:02:01	2009-07-13T13:46:22	Number of optional ACIS chips dropped	0	0
[s] Observation end time (MET)	363888987.184000	363889849.44252	On-chip summing requested	N	N
Observation end date	2009-07-13T16:15:21	2009-07-13T16:30:49	Subarray requested	NONE	NONE
Read mode	TIMED	TIMED	Alternating exposures requested	N	N
			[s] Primary exposure time	0.000000	3.2

## 2.3 Aspect



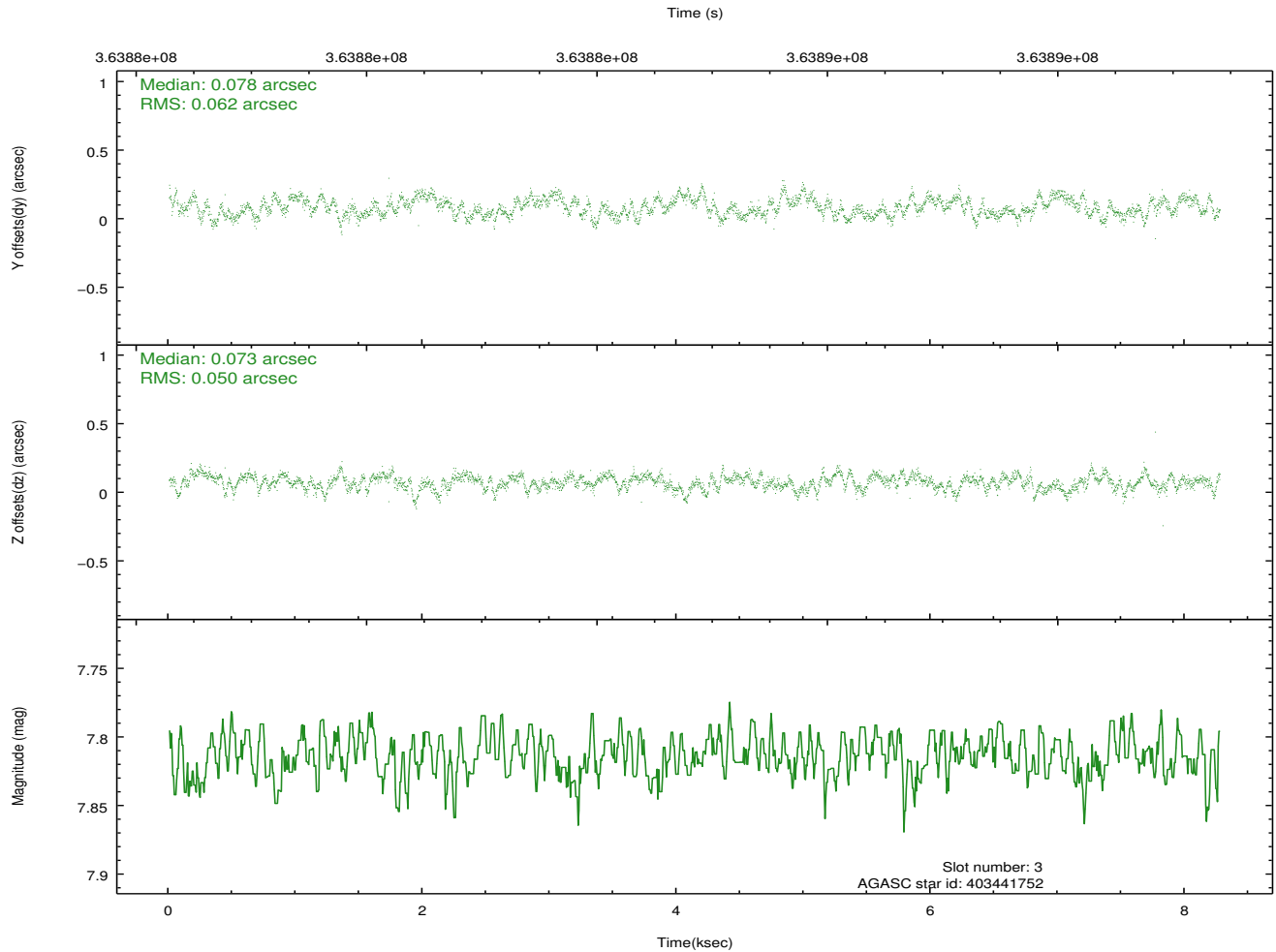
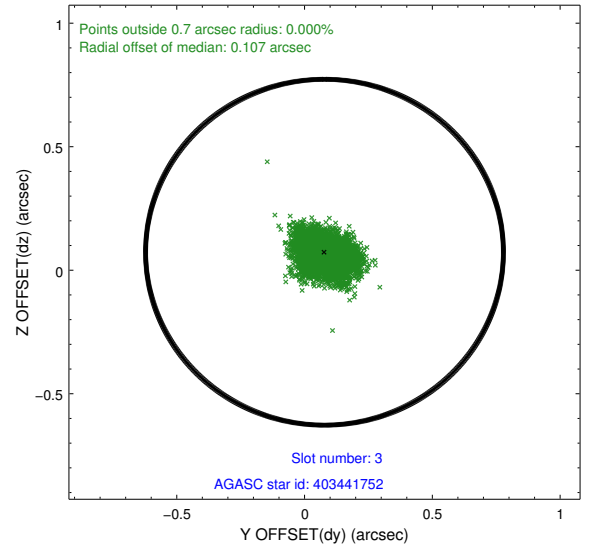
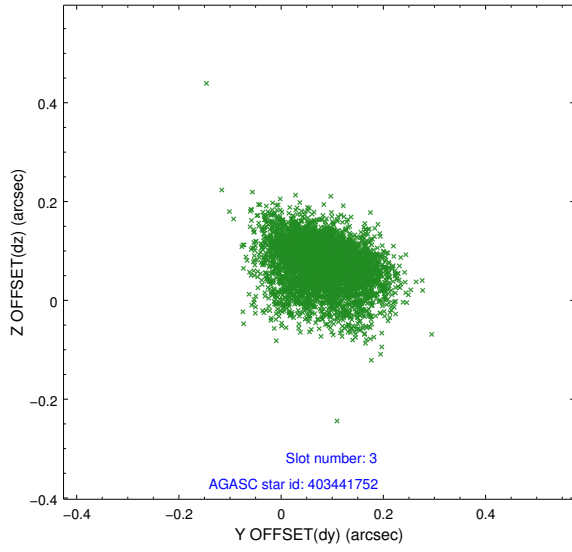


### Slot Statistics

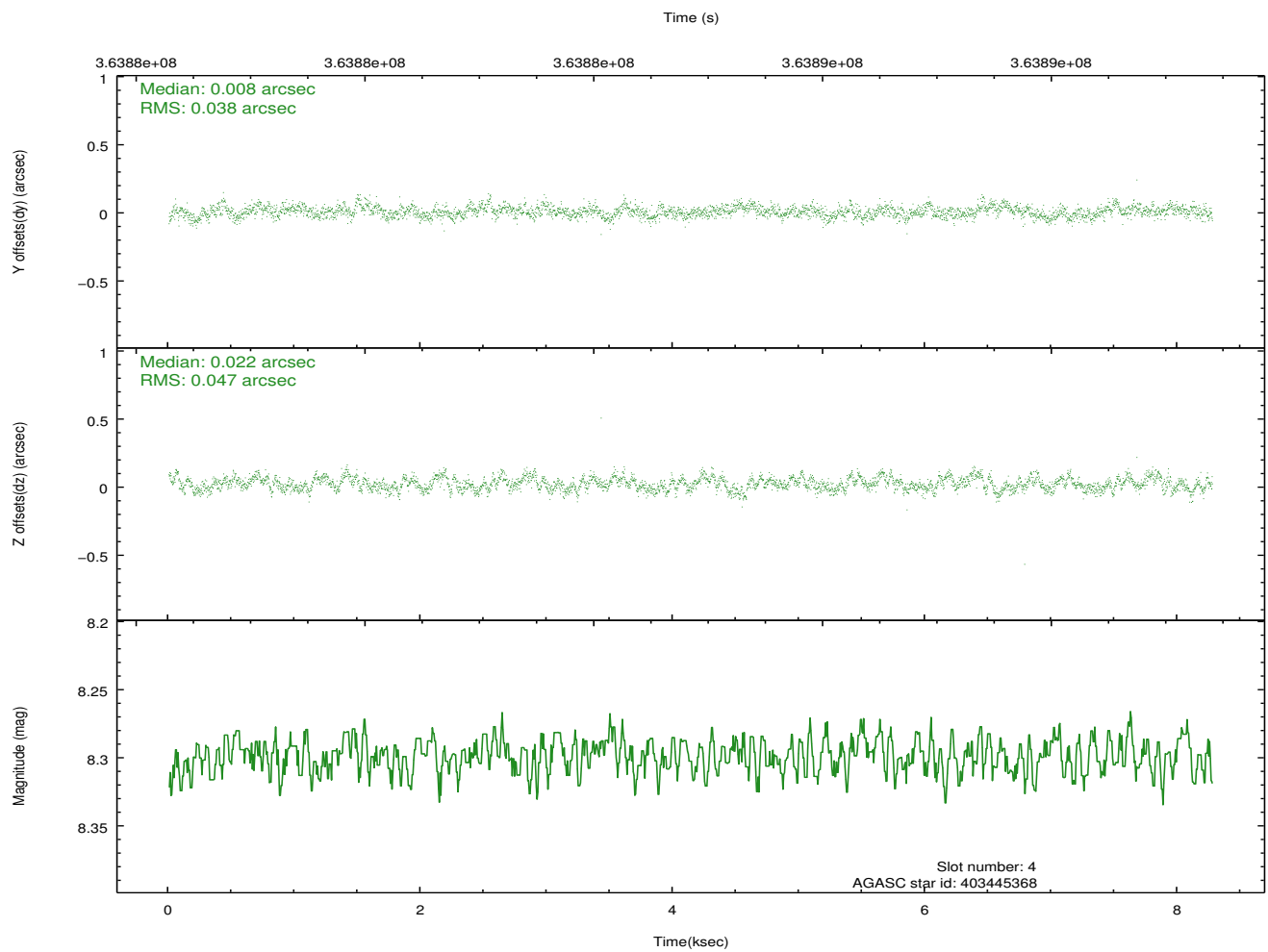
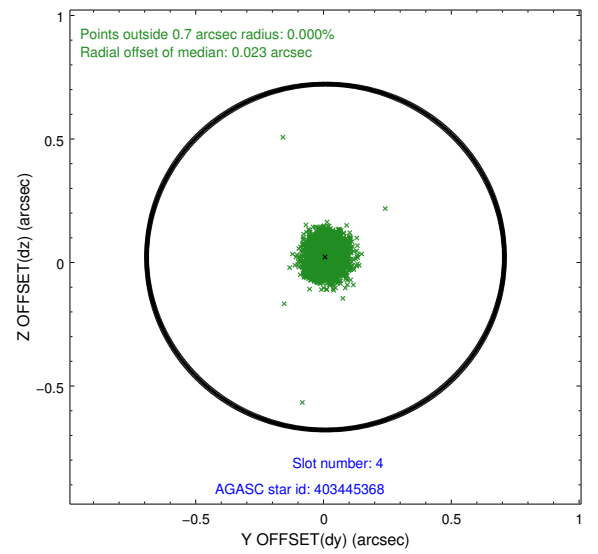
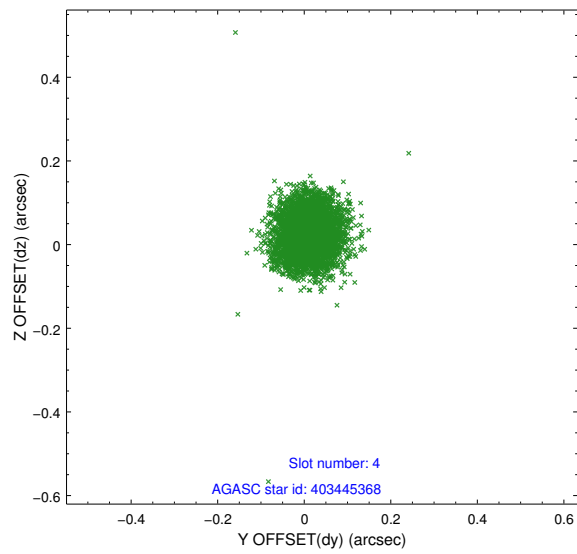
slot	status	id	mag	n_pts	med_dy	med_dz	dr1	dr2	ra	dec	mean_y	mean_z
0	FID	ACIS-S-2	6.87	2018	-0.070	-0.011	0.012	0.017	0.000000	0.000000	-768.16	-1737.87
1	FID	ACIS-S-4	6.95	2018	0.163	0.036	0.007	0.013	0.000000	0.000000	2145.06	169.93
2	FID	ACIS-S-5	6.99	2018	-0.125	-0.018	0.011	0.017	0.000000	0.000000	-1820.18	164.36
3	GUIDE	403441752	7.81	4035	0.078	0.073	0.085	0.136	250.175483	42.145343	1394.68	-1937.61
4	GUIDE	403445368	8.30	4036	0.008	0.022	0.063	0.102	251.382868	42.447196	-1764.00	-696.30
5	GUIDE	403451032	8.23	4036	-0.001	-0.039	0.063	0.100	251.647876	41.792286	-804.79	1571.39
6	GUIDE	403439816	8.47	4033	-0.091	-0.011	0.064	0.104	250.446698	42.465731	95.74	-2346.32
7	GUIDE	403440824	8.60	4035	0.000	-0.042	0.083	0.129	251.315347	41.374636	844.80	2156.21

## 2.4 Star Slots

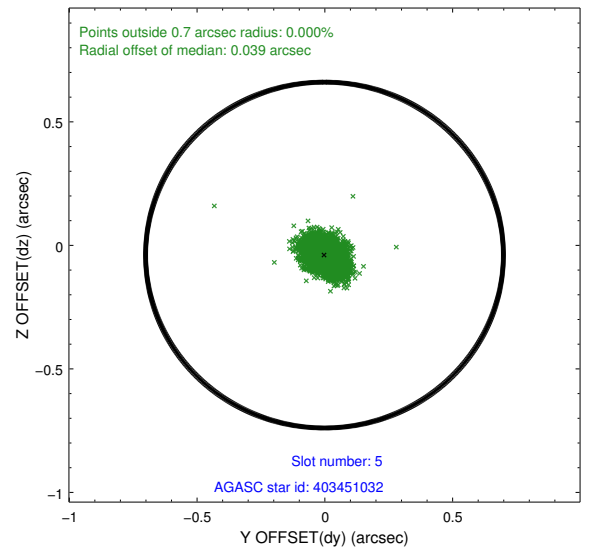
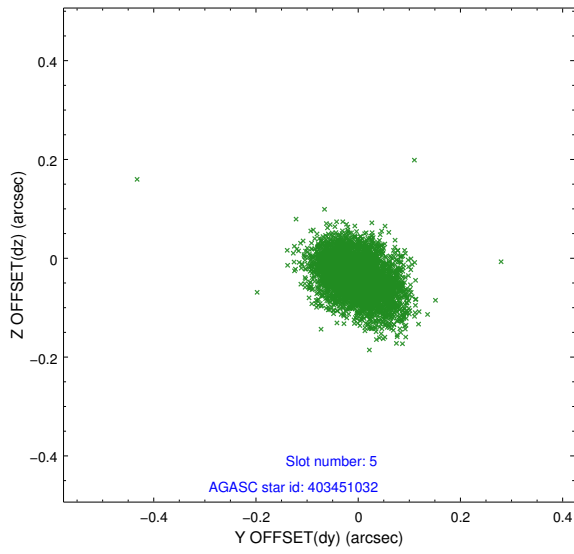
### 2.4.1 Slot 3



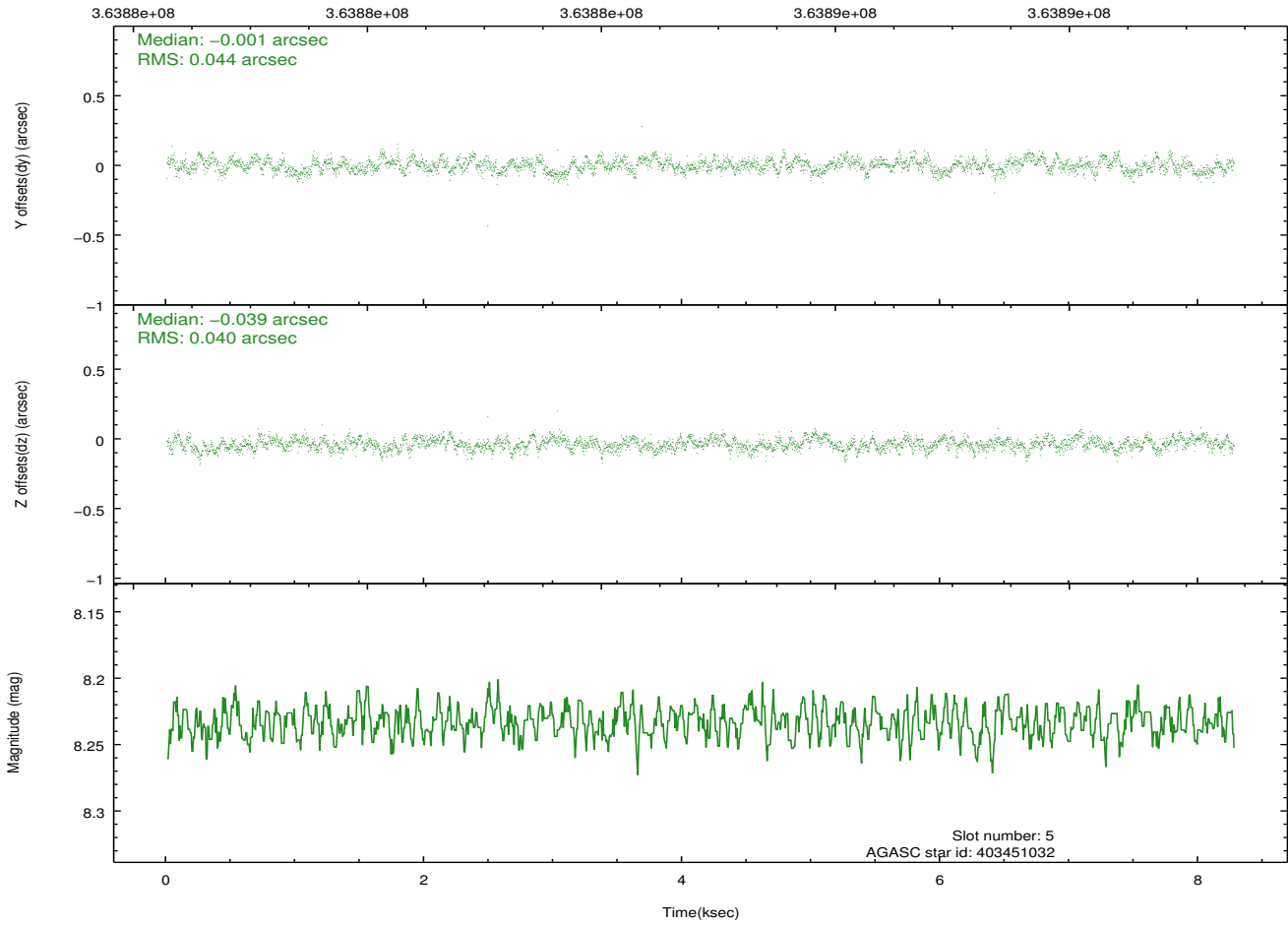
## 2.4.2 Slot 4



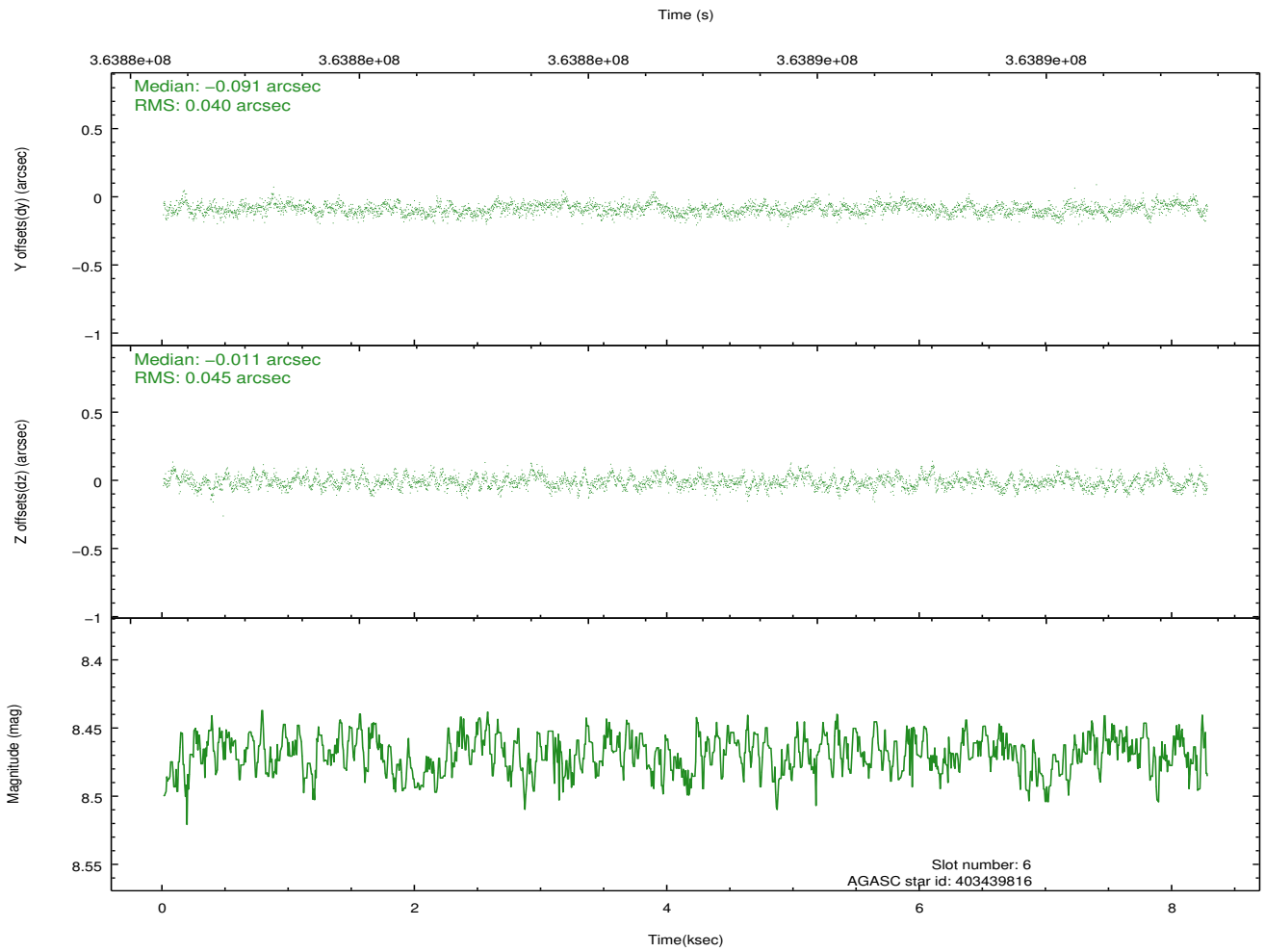
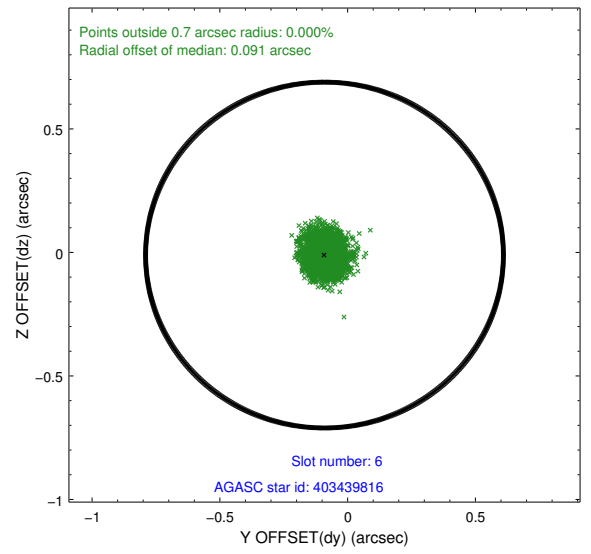
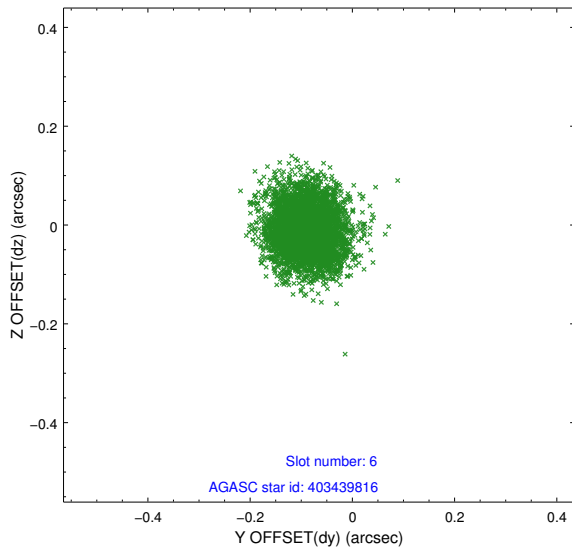
### 2.4.3 Slot 5



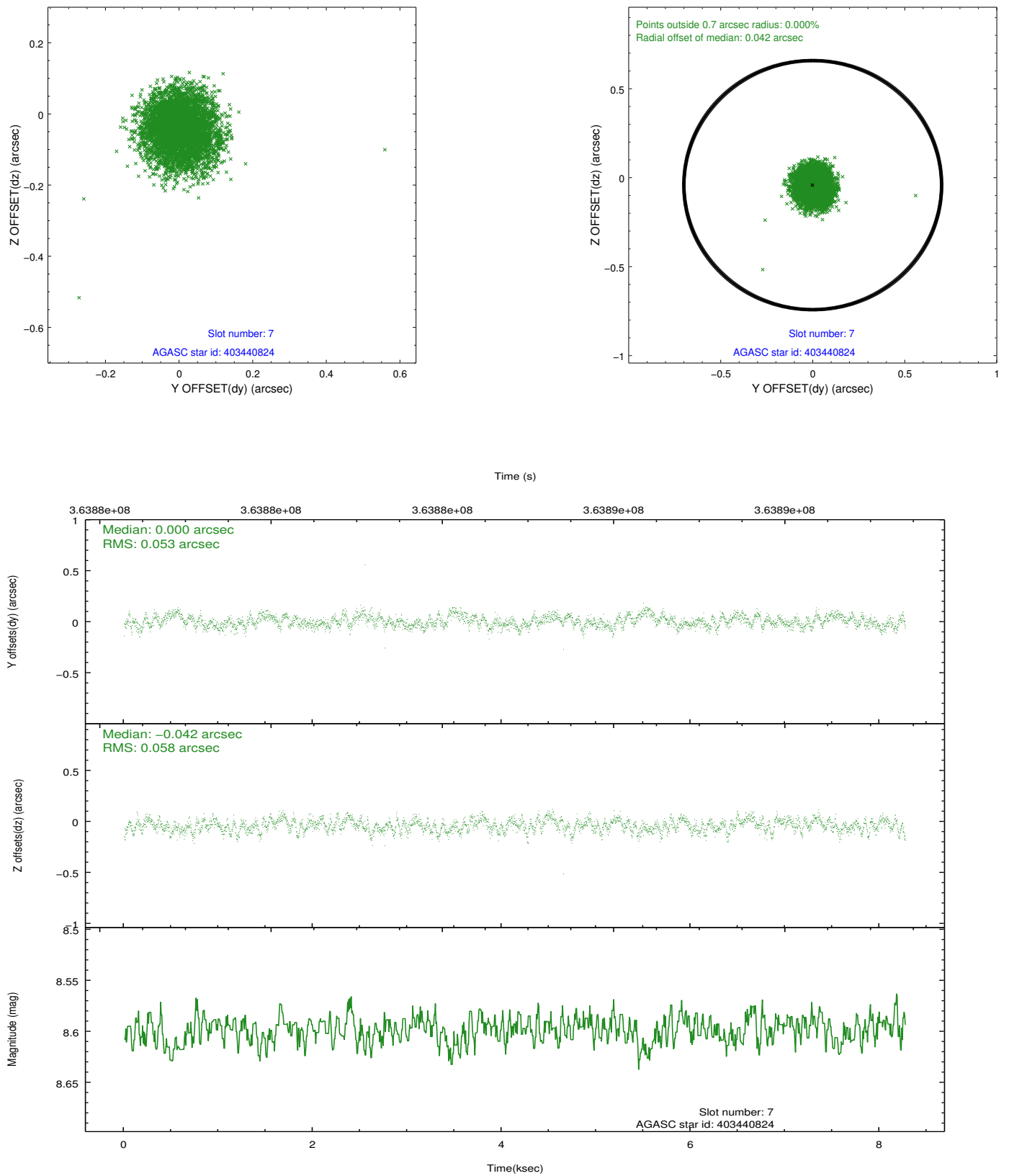
Time (s)



## 2.4.4 Slot 6

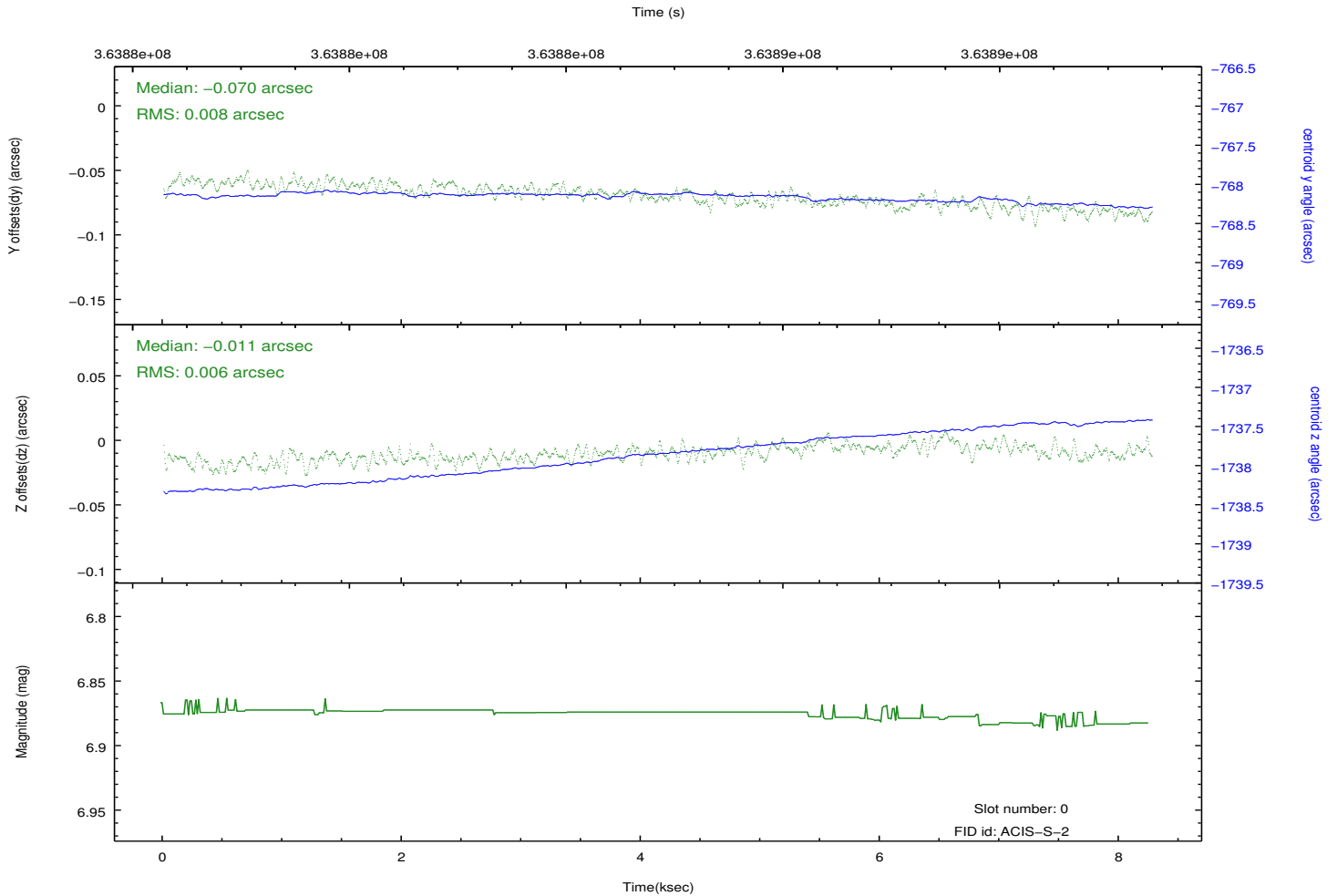
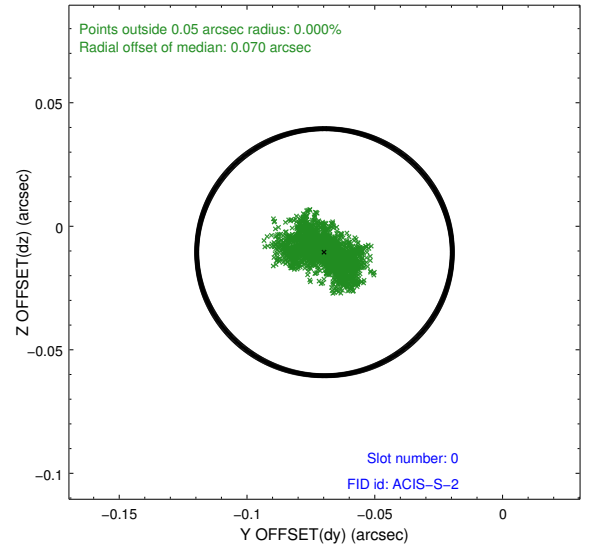
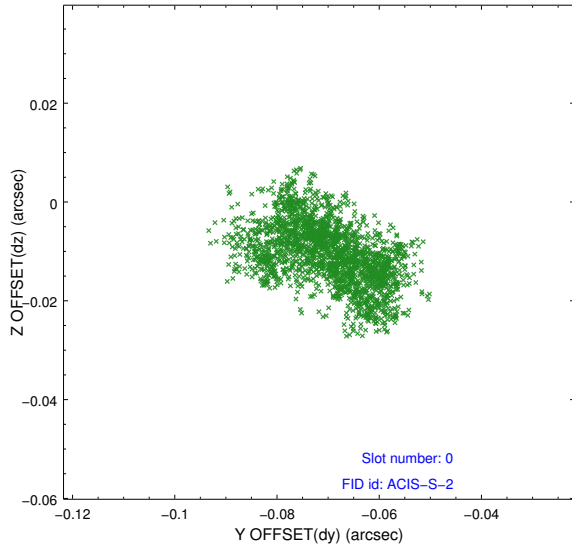


## 2.4.5 Slot 7

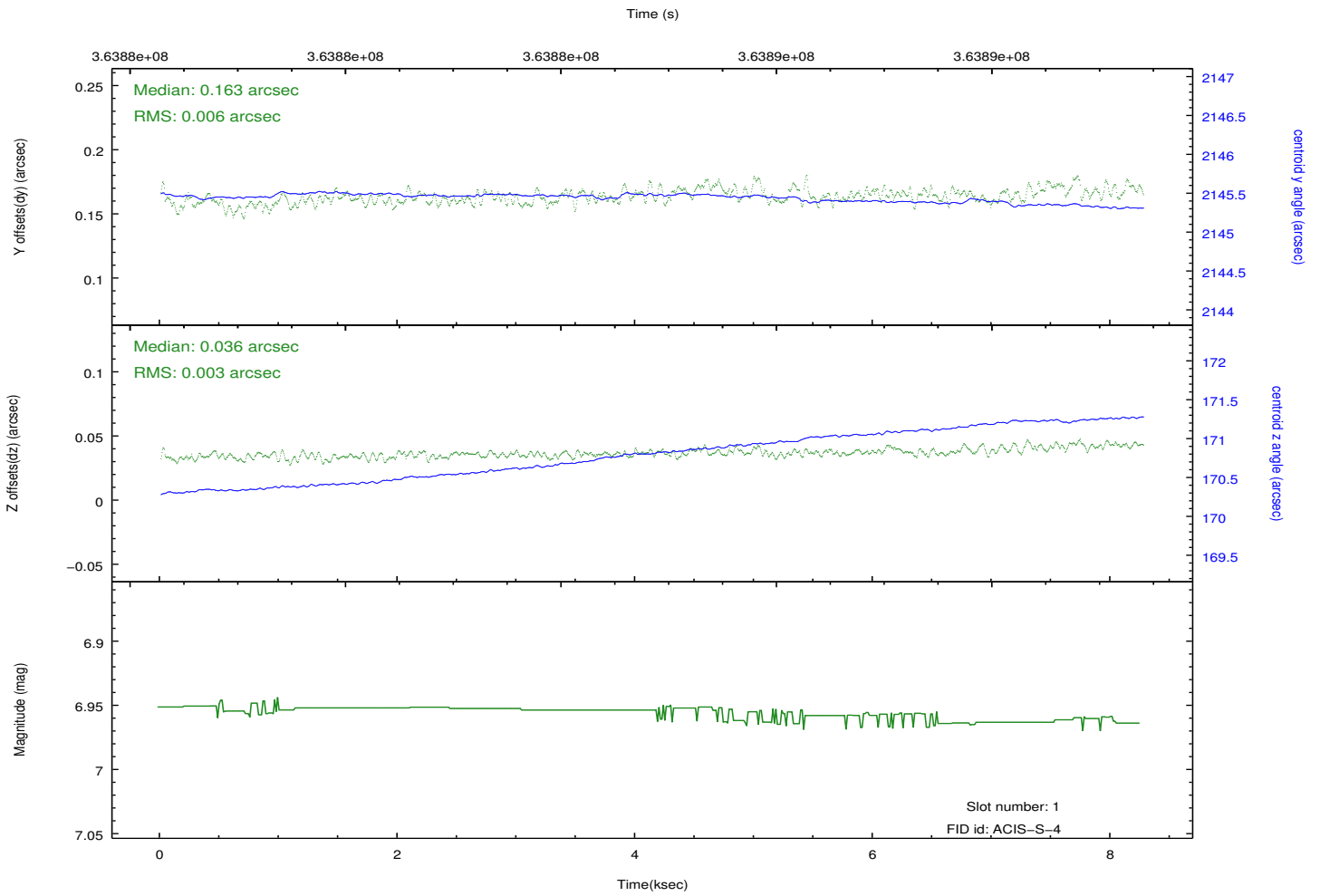
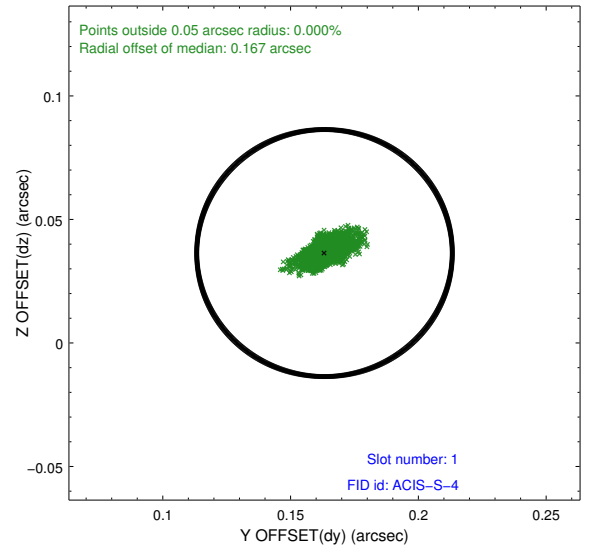
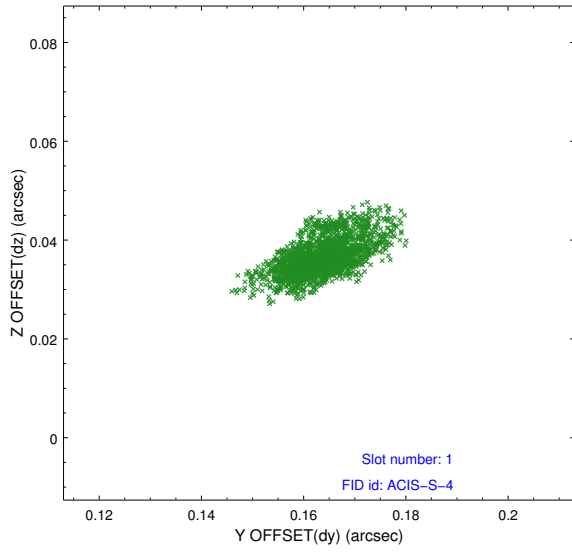


## 2.5 FID Slots

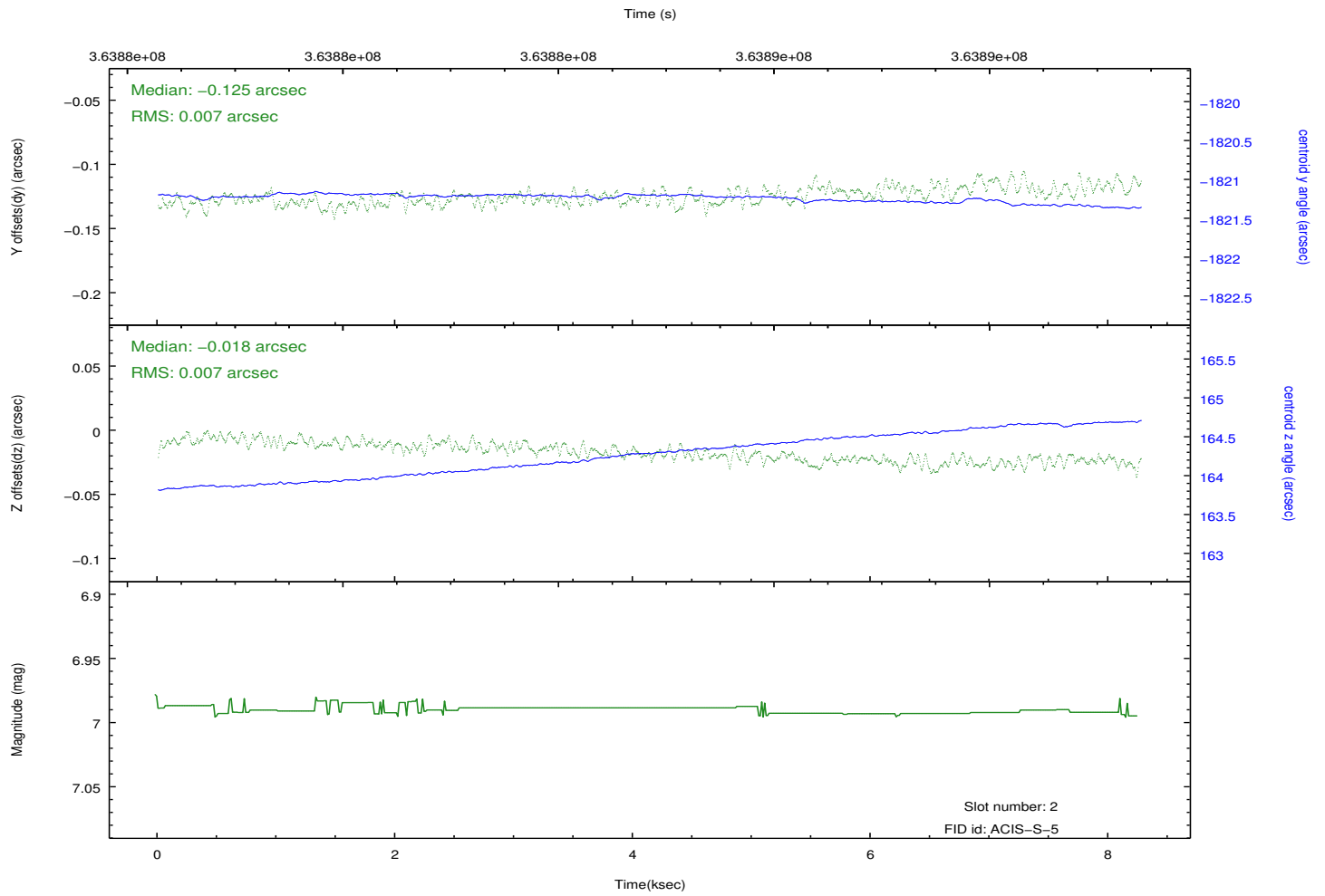
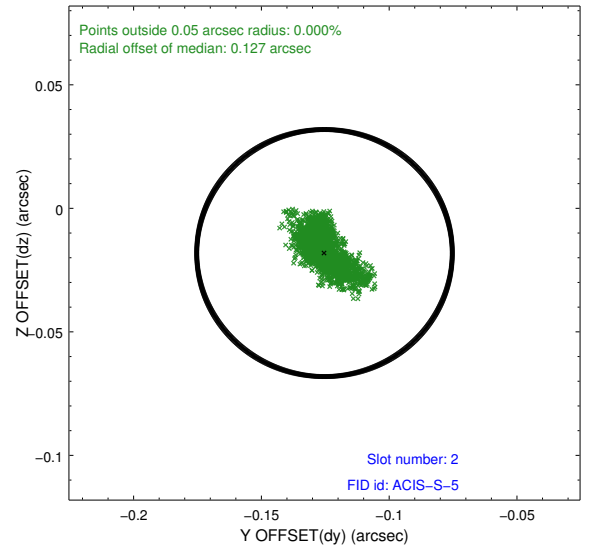
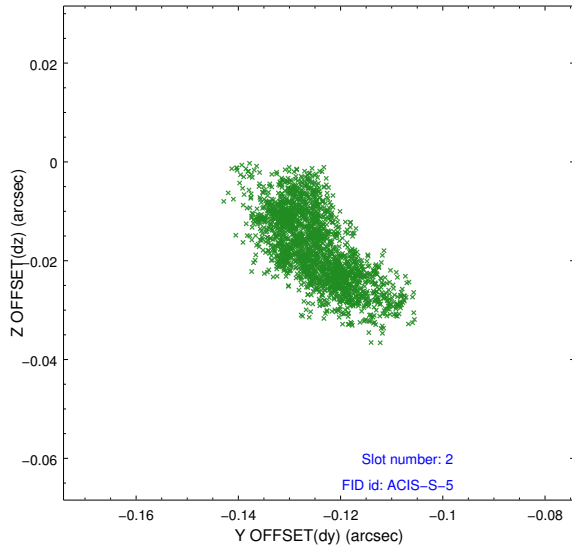
### 2.5.1 Slot 0



## 2.5.2 Slot 1



### 2.5.3 Slot 2



## A Summary

### A.1 Status

V&V Scientist	Jen Lauer
V&V Date (YYYY-MM-DD)	2012.06.13
V&V Edition	1
V&V Disposition and Status	OK
V&V Charge Time	7.94879997

### A.2 Comments