

# V&V Reference Report

## L2 ASCDS Version : 8.4.5

Observation 10382 - L2 Version 2  
Chandra X-Ray Center

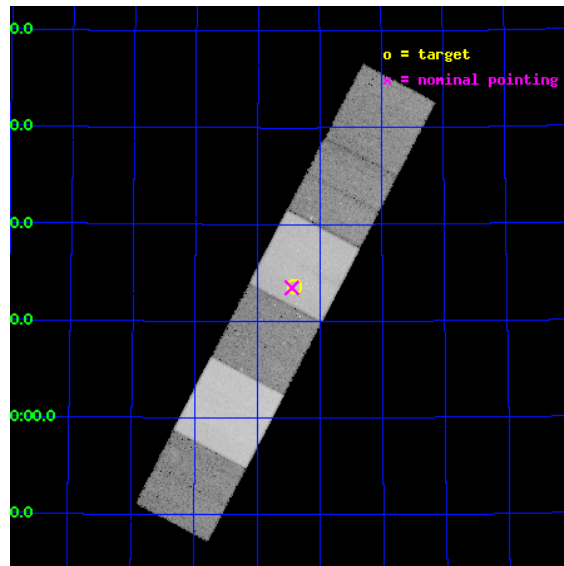
L2 Processing Date : Jun 11 2012

## Contents

<b>1</b>	<b>Front</b>	<b>2</b>
<b>2</b>	<b>OBI</b>	<b>3</b>
2.1	OBI . . . . .	3
2.1.1	Images . . . . .	3
2.1.2	Bias . . . . .	3
2.1.3	Parameters . . . . .	4
2.1.4	Events . . . . .	4
2.2	Compared Parameters . . . . .	5
2.3	Aspect . . . . .	6
2.4	Star Slots . . . . .	9
2.4.1	Slot 3 . . . . .	9
2.4.2	Slot 4 . . . . .	10
2.4.3	Slot 5 . . . . .	11
2.4.4	Slot 6 . . . . .	12
2.4.5	Slot 7 . . . . .	13
2.5	FID Slots . . . . .	14
2.5.1	Slot 0 . . . . .	14
2.5.2	Slot 1 . . . . .	15
2.5.3	Slot 2 . . . . .	16
<b>A</b>	<b>Summary</b>	<b>17</b>
A.1	Status . . . . .	17
A.2	Comments . . . . .	17

# 1 Front

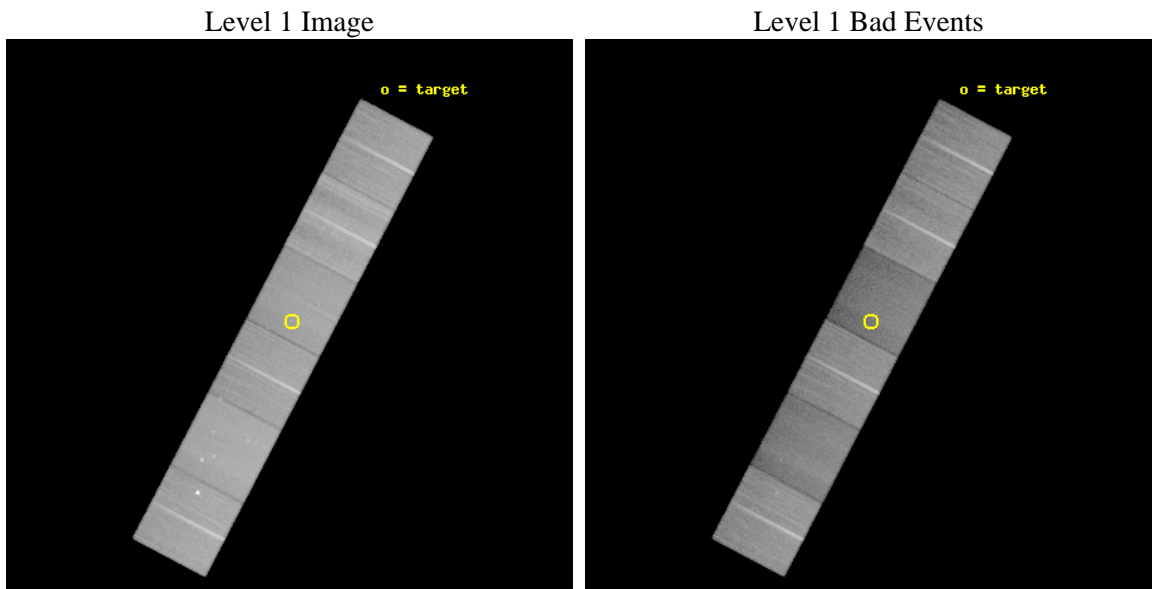
seq_num	701925	Sequence number
obs_id	10382	Observation id
title	The Circumnuclear X-Ray Environments of CSS Radio Sources	Proposal
observer	Dr Daniel Evans	Principal investigator
object	3C 268.3	Source name
dtcycle	0	&#160
cycle	P	events from which exps? Prim/Second/Both
ra_targ	181.602917	Observer's specified target RA [deg]
dec_targ	64.226917	Observer's specified target Dec [deg]
ra_nom	181.61249698925	Nominal RA [deg]
dec_nom	64.224437496777	Nominal Dec [deg]
roll_nom	297.64801120453	Nominal Roll [deg]
revision	2	Processing version of data
ontime	43075.199839592	Sum of GTIs [s]
liveltime	42529.755722452	Livetime [s]
ontime4	43065.476938665	Sum of GTIs [s]
ontime5	43075.199839592	Sum of GTIs [s]
ontime6	43065.477028251	Sum of GTIs [s]
ontime7	43075.199839592	Sum of GTIs [s]
ontime8	43071.958869338	Sum of GTIs [s]
ontime9	43062.235918522	Sum of GTIs [s]
l2events	511244	Number of level 2 events



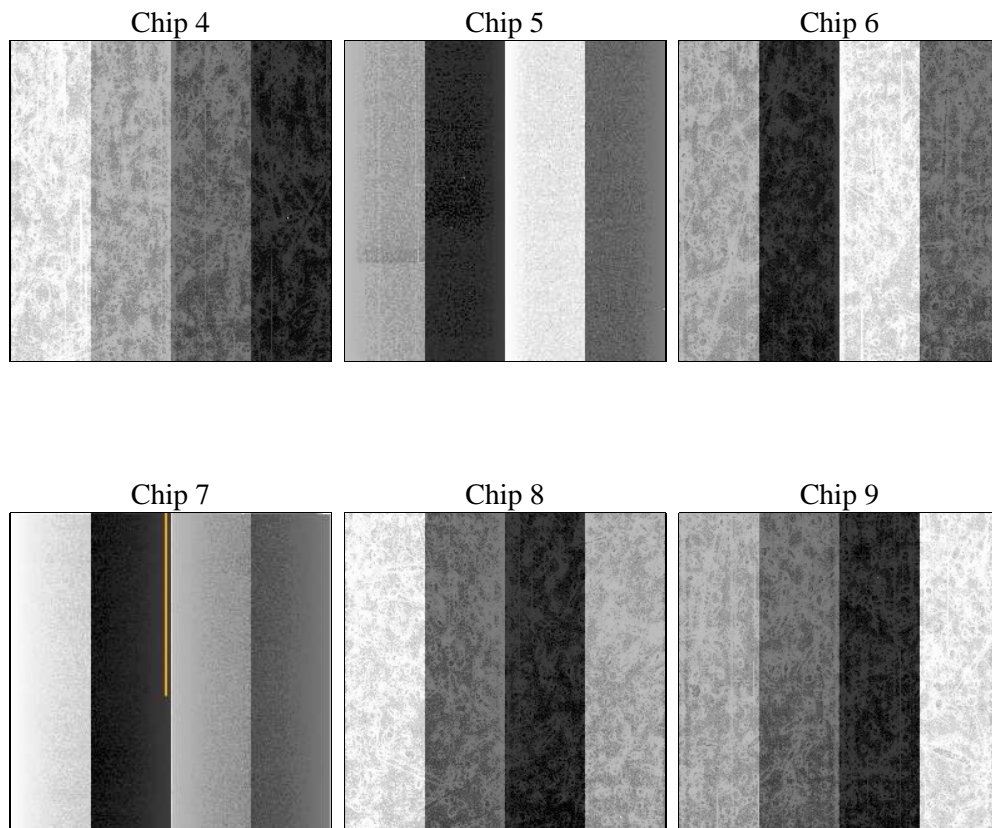
## 2 OBI

### 2.1 OBI

#### 2.1.1 Images



#### 2.1.2 Bias



### 2.1.3 Parameters

obi_num	0	Obi number	sched_exp_time	42936.621000	[s] Scheduled observation exposure time
ascdsver	8.4.5	Processing system revision	ontime	43075.199839592	Sum of GTIs [s]
caldbver	4.4.10	&#160	ontime4	43065.476938665	Sum of GTIs [s]
date	2012-06-11T03:04:16	Date and time of file creation	ontime5	43075.199839592	Sum of GTIs [s]
revision	2	Processing version of data	ontime6	43065.477028251	Sum of GTIs [s]
			ontime7	43075.199839592	Sum of GTIs [s]
			ontime8	43071.958869338	Sum of GTIs [s]
			ontime9	43062.235918522	Sum of GTIs [s]
			l1events	2397754	Number of level 1 events

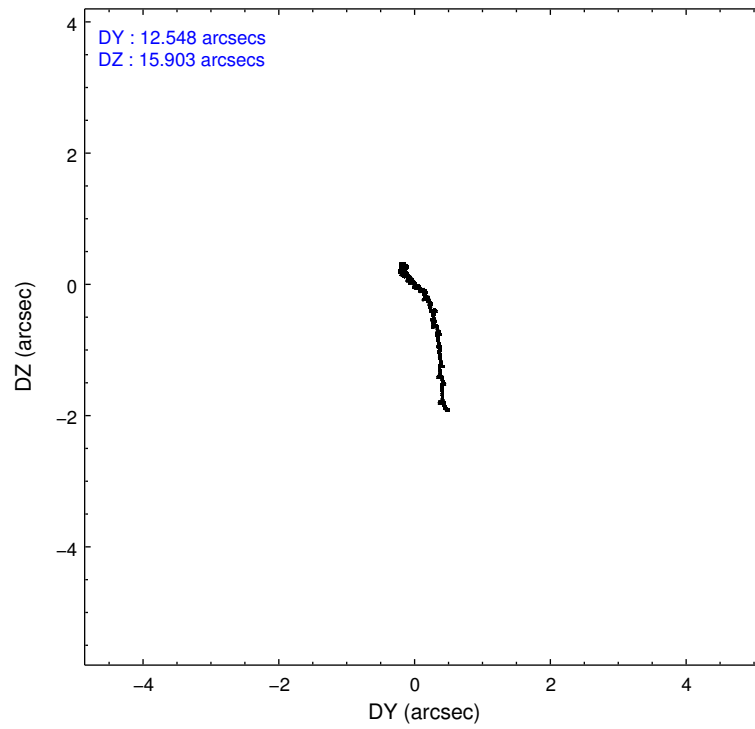
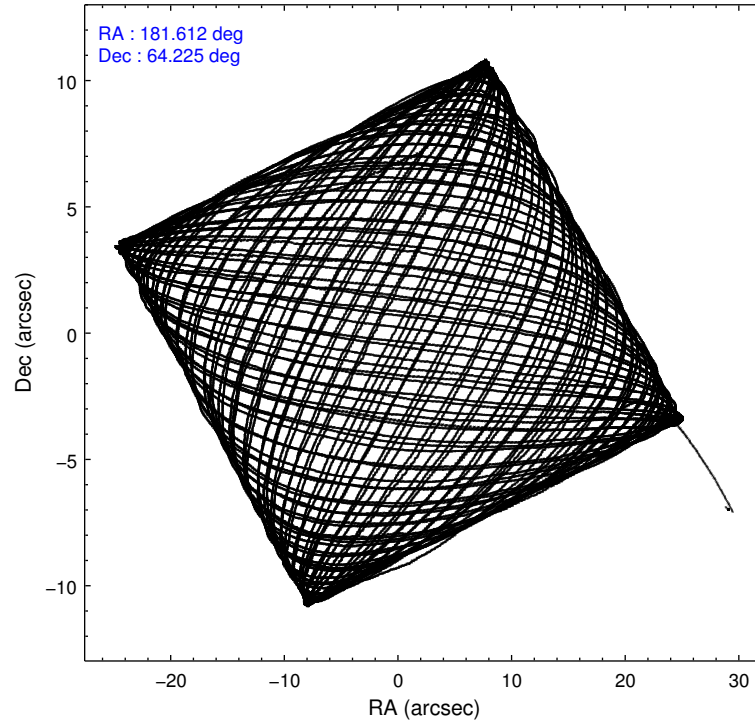
### 2.1.4 Events

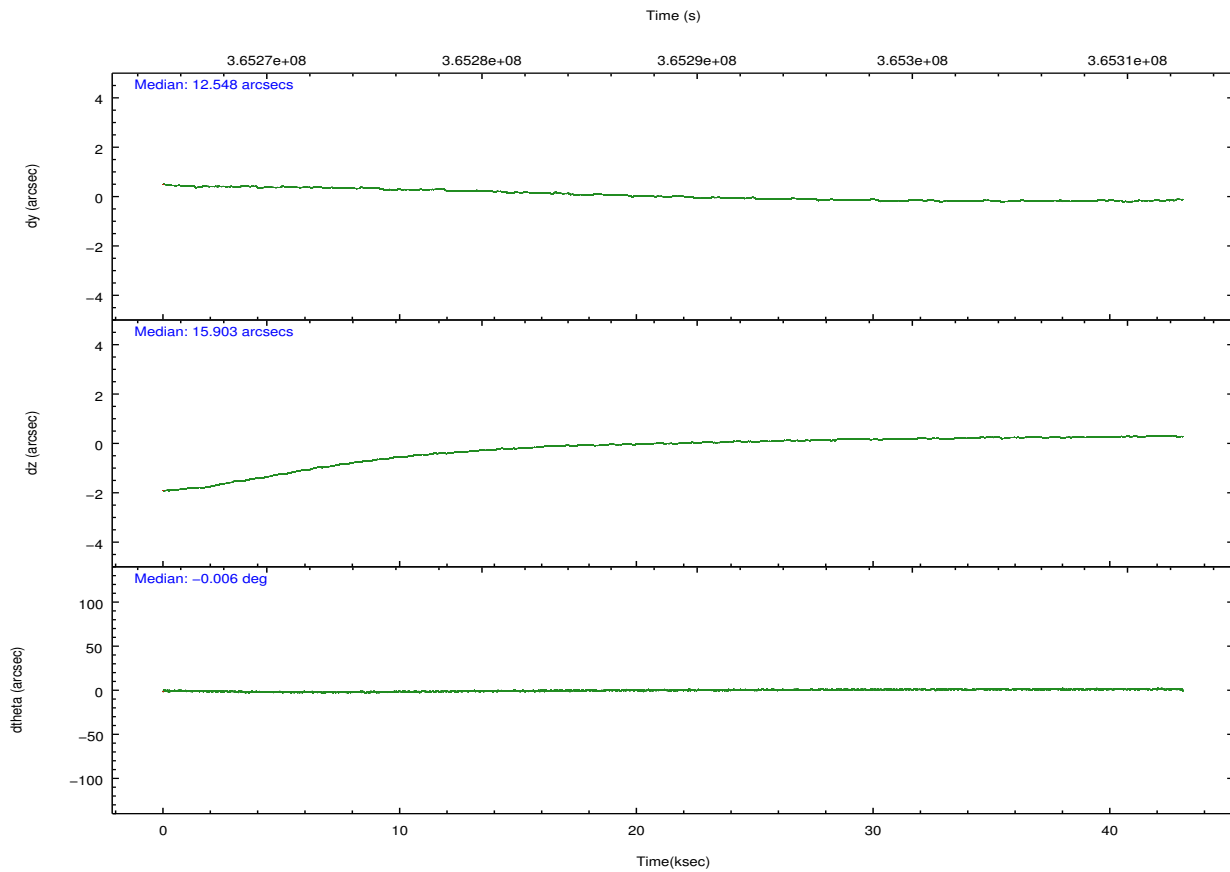
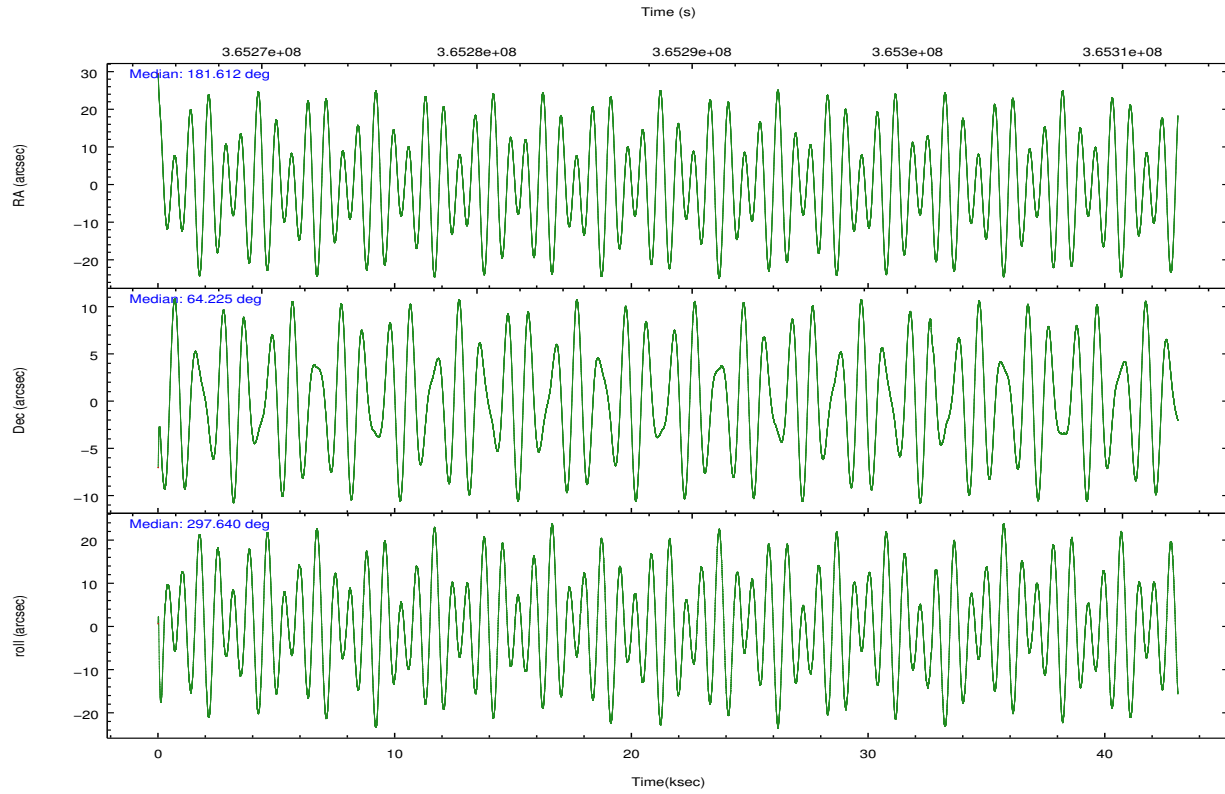
	ccd 4	ccd 5	ccd 6	ccd 7	ccd 8	ccd 9		ccd 4	ccd 5	ccd 6	ccd 7	ccd 8	ccd 9
level 1 events	435047	451693	363908	346476	452699	347931	grade 0 events	25885	19679	13743	17323	32236	13043
rejected events	385228	218644	327057	176772	336750	311754		5%	4%	3%	4%	7%	3%
rejected %	88%	48%	89%	51%	74%	89%	grade 1 events	544	1144	190	517	372	217
								0%	0%	0%	0%	0%	0%
							grade 2 events	9841	73851	8231	36715	28029	7912
								2%	16%	2%	10%	6%	2%
							grade 3 events	4195	10456	3835	15883	12755	4065
								0%	2%	1%	4%	2%	1%
							grade 4 events	3998	9460	3928	15529	11850	4039
								0%	2%	1%	4%	2%	1%
							grade 5 events	12507	36386	12481	36920	19397	13986
								2%	8%	3%	10%	4%	4%
							grade 6 events	6254	121386	7387	85556	31827	7369
								1%	26%	2%	24%	7%	2%
							grade 7 events	371823	179331	314113	138033	316233	297300
								85%	39%	86%	39%	69%	85%

## 2.2 Compared Parameters

Parameter	Planned	Actual	Parameter	Planned	Actual
Instrument	ACIS	ACIS	Obspar format version number	7	7
Detector	ACIS-456789	ACIS-456789	Obspar file type	PREDICTED	ACTUAL
Grating	NONE	NONE	Obspar update status	NONE	UPDATED
Data mode	VFAINT	VFAINT	CCD I0 on	N	N
Observation mode	POINTING	POINTING	CCD I1 on	N	N
[deg] Pointing RA	181.558912	181.6124969892468	CCD I2 on	N	N
[deg] Pointing Dec	64.238756	64.22443749677699	CCD I3 on	N	N
[deg] Pointing Roll	297.539634	297.6480112045323	CCD S0 on	O1	Y
[mm] SIM focus pos	-0.684267	-0.6828225247311905	CCD S1 on	Y	Y
[mm] SIM defocus	0	0.001444936568705701	CCD S2 on	Y	Y
[mm] SIM translation stage pos	-190.132523	-190.1400660498719	CCD S3 on	Y	Y
[mm] SIM translation stage offset	0	0.00754346686406393	CCD S4 on	Y	Y
[s] Observation start time (MET)	365267480.184000	365266263.58641	CCD S5 on	O2	Y
Observation start date	2009-07-29T15:10:14	2009-07-29T14:51:03	Number of optional ACIS chips dropped	0	0
[s] Observation end time (MET)	365310417.184000	365310638.91363	On-chip summing requested	N	N
Observation end date	2009-07-30T03:05:51	2009-07-30T03:10:38	Subarray requested	NONE	NONE
Read mode	TIMED	TIMED	Alternating exposures requested	N	N
			[s] Primary exposure time	0.000000	3.2

## 2.3 Aspect



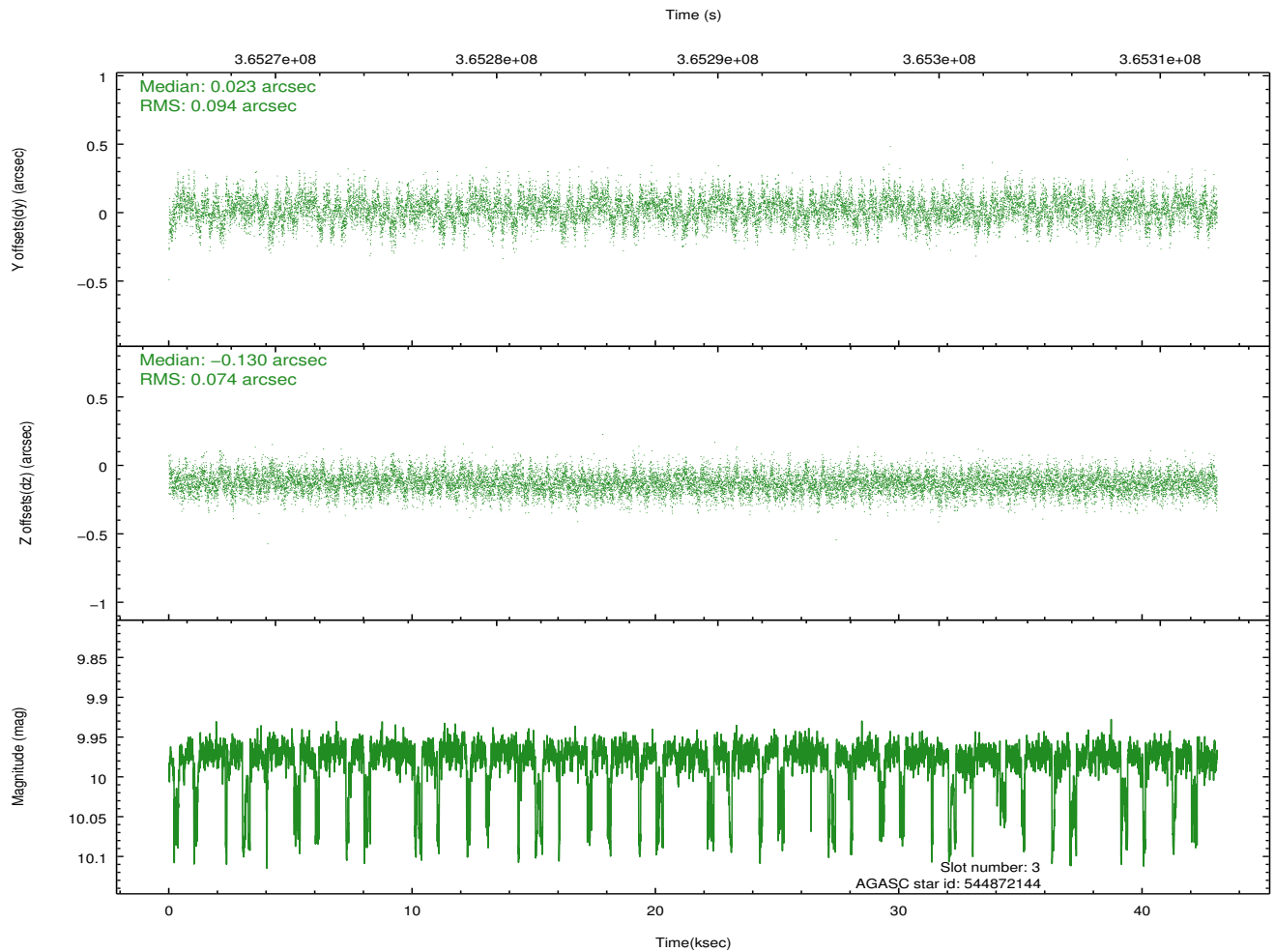
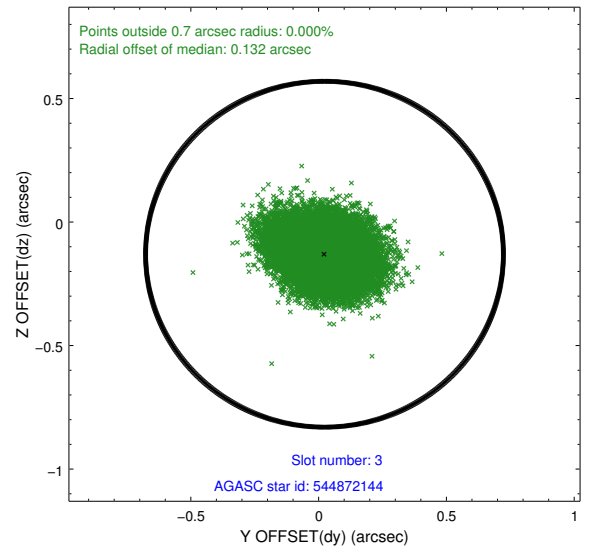
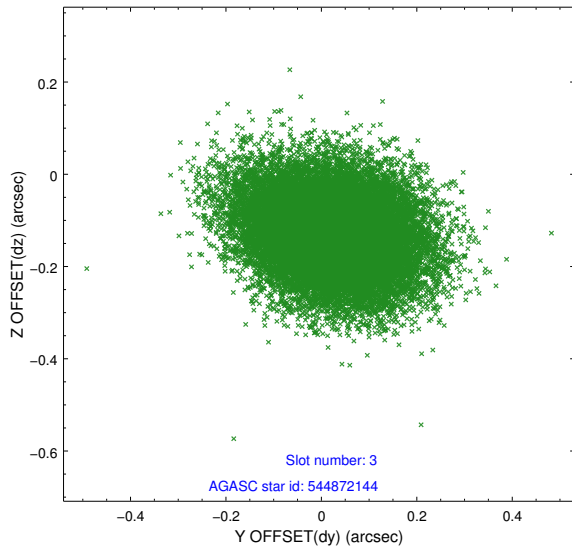


### Slot Statistics

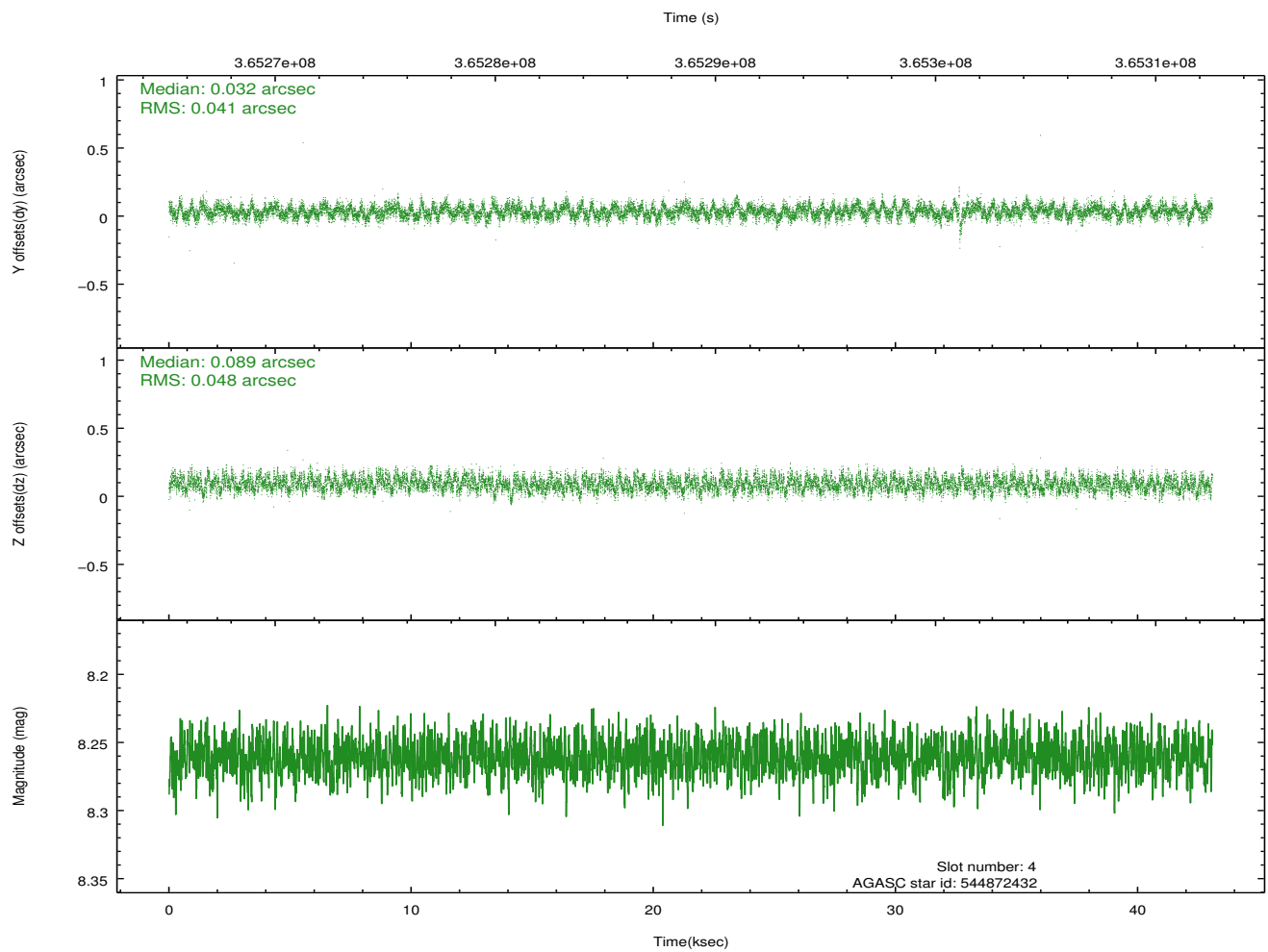
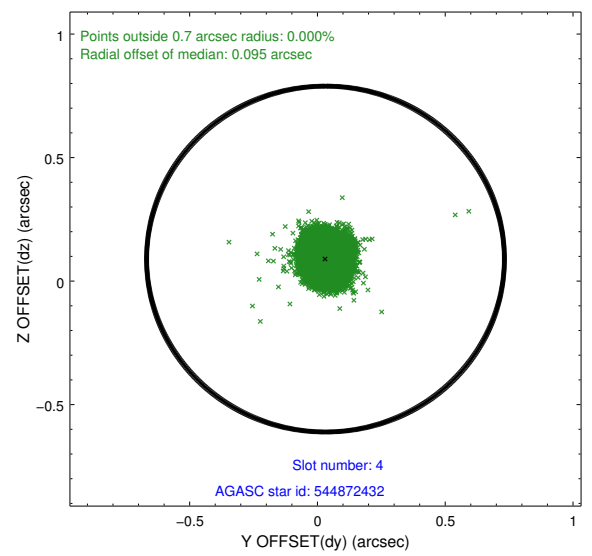
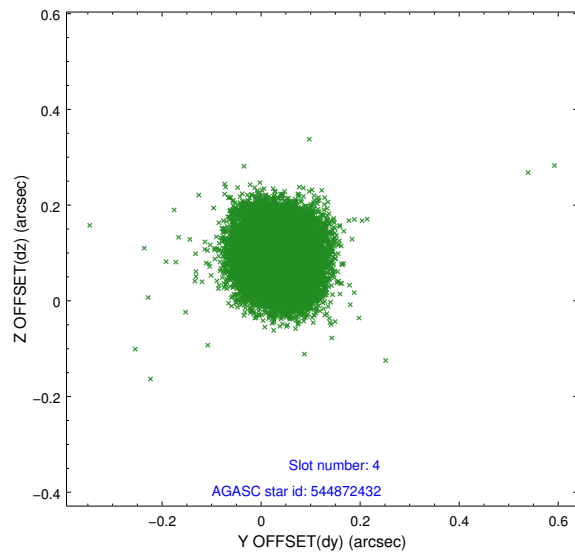
slot	status	id	mag	n_pts	med_dy	med_dz	dr1	dr2	ra	dec	mean_y	mean_z
0	FID	ACIS-S-1	6.98	10508	0.085	-0.097	0.015	0.082	0.000000	0.000000	930.62	-1732.75
1	FID	ACIS-S-5	7.02	10507	-0.126	0.051	0.012	0.018	0.000000	0.000000	-1818.60	164.91
2	FID	ACIS-S-6	7.11	10506	0.021	0.057	0.018	0.078	0.000000	0.000000	396.10	808.89
3	GUIDE	544872144	9.98	20945	0.023	-0.130	0.126	0.211	181.066828	63.560468	1798.38	-1826.78
4	GUIDE	544872432	8.26	21012	0.032	0.089	0.067	0.107	181.070384	64.093771	105.47	-921.12
5	GUIDE	544872904	9.54	20987	-0.045	0.088	0.114	0.185	182.067557	64.803954	-1446.51	1633.43
6	GUIDE	544876008	9.01	20922	-0.091	-0.162	0.086	0.137	181.935887	64.595120	-869.90	1110.17
7	GUIDE	544999904	9.10	20999	0.078	0.114	0.100	0.155	182.961440	64.209794	1086.68	1911.03

## 2.4 Star Slots

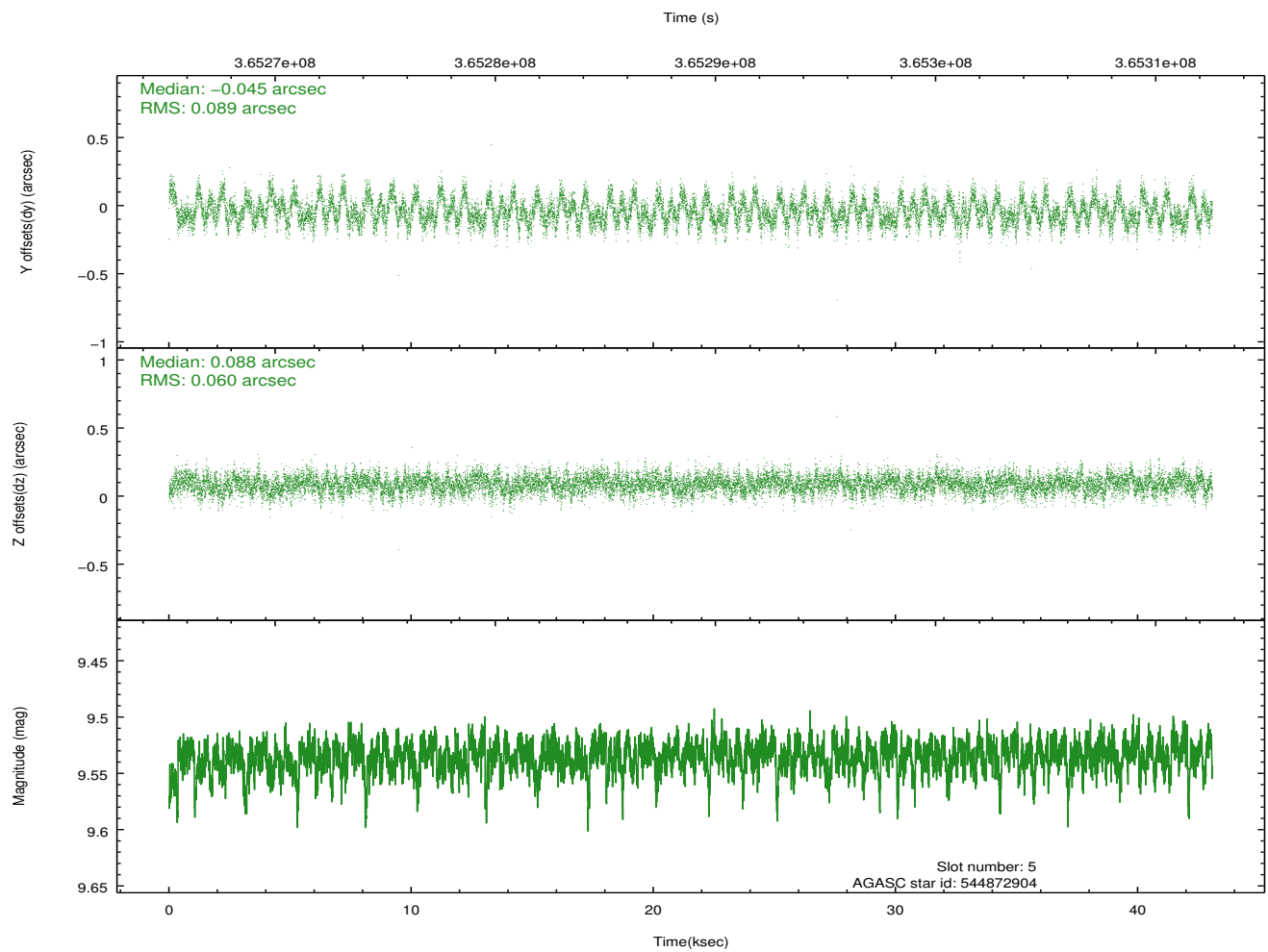
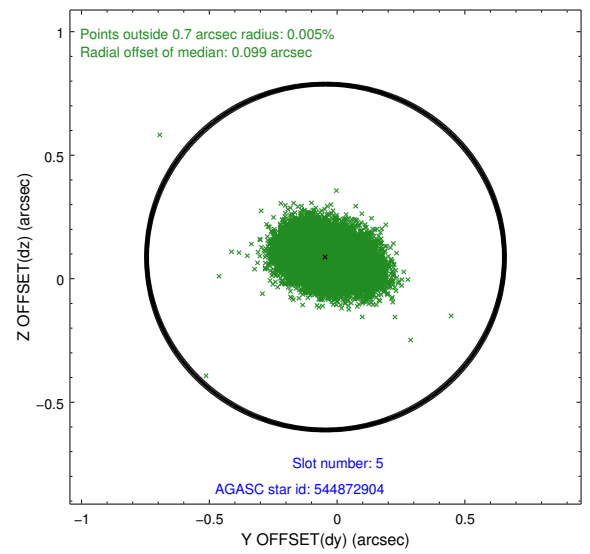
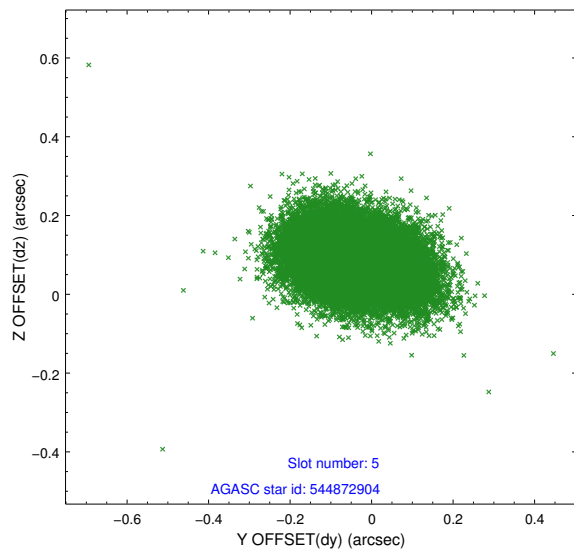
### 2.4.1 Slot 3



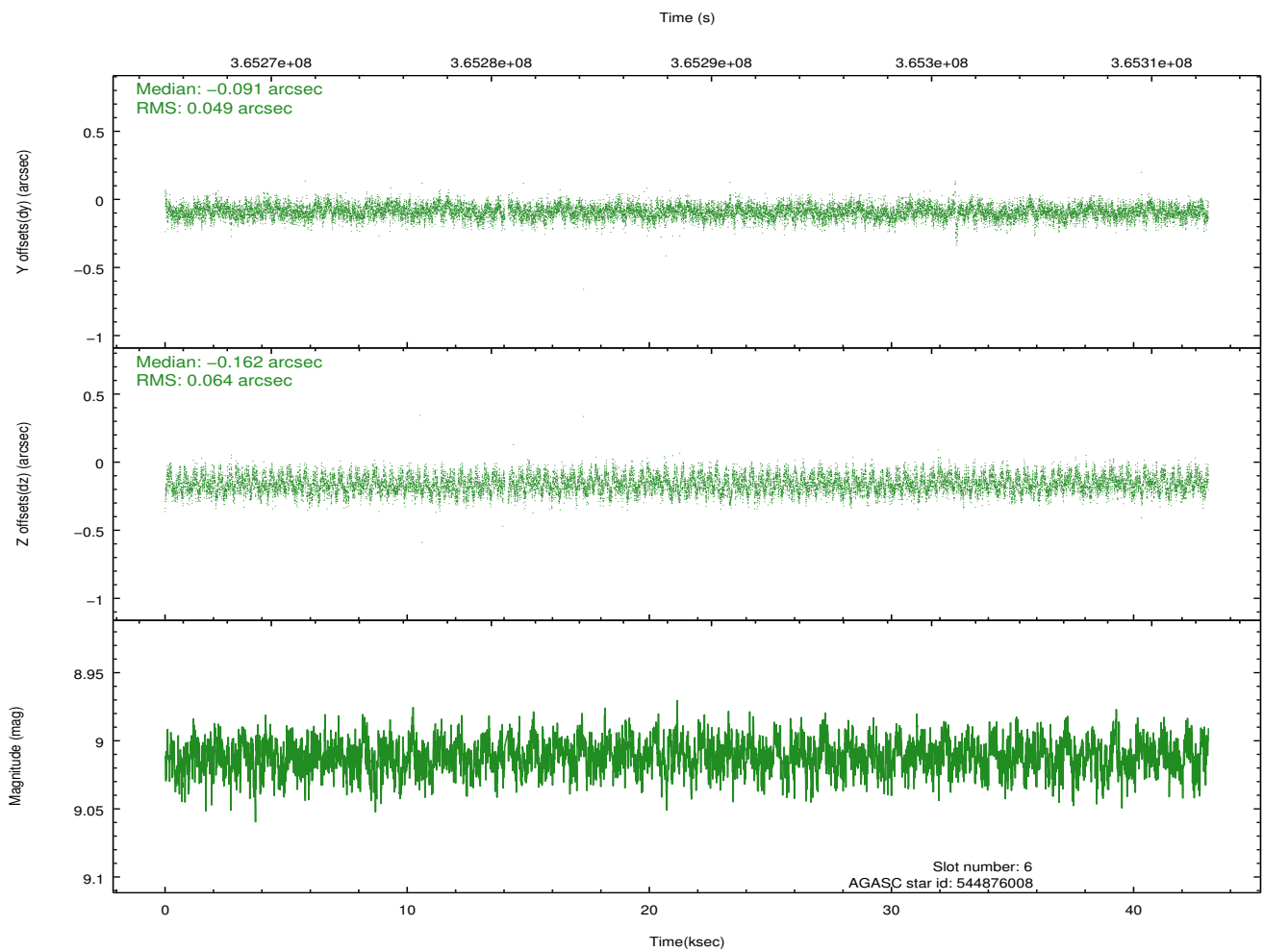
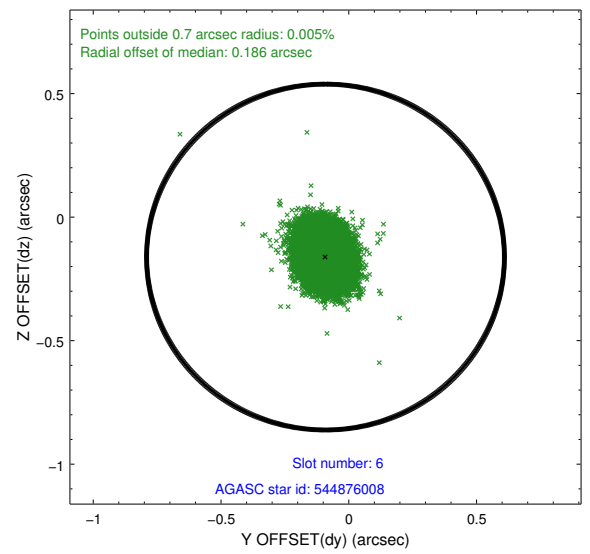
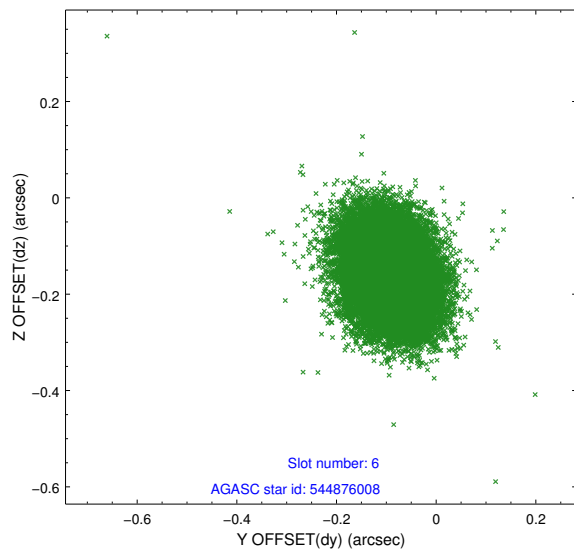
## 2.4.2 Slot 4



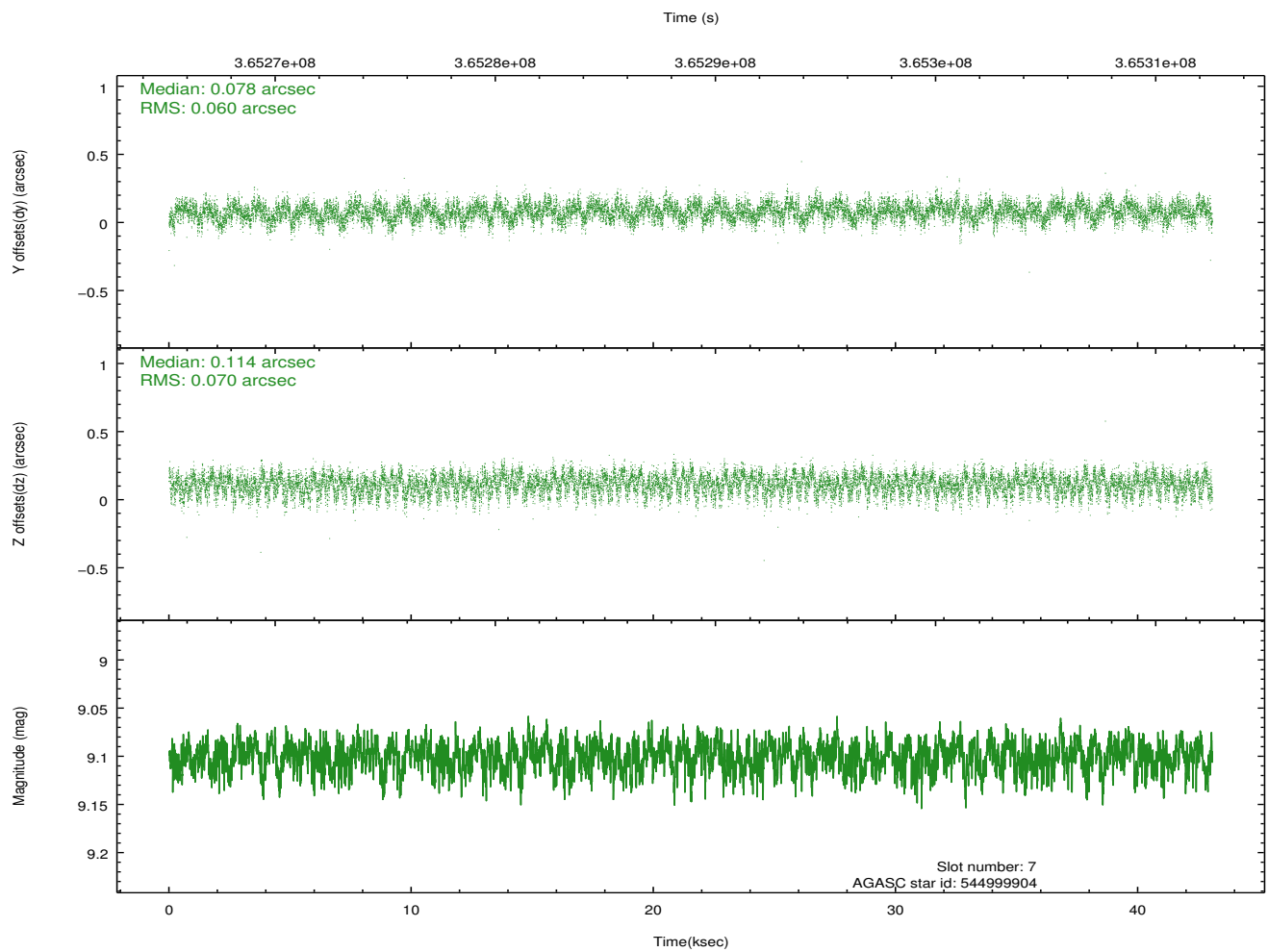
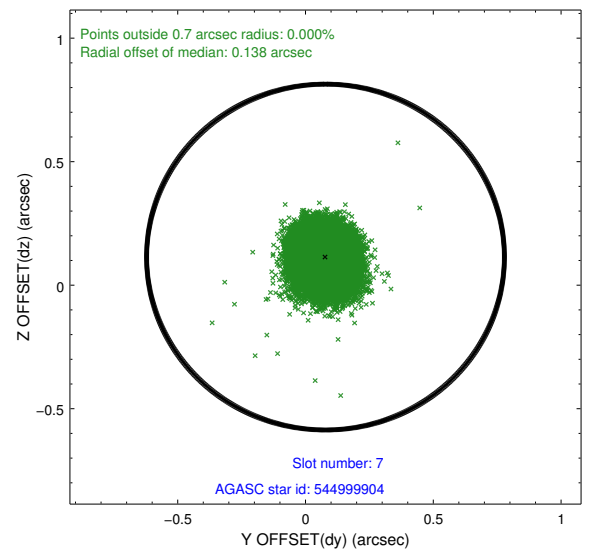
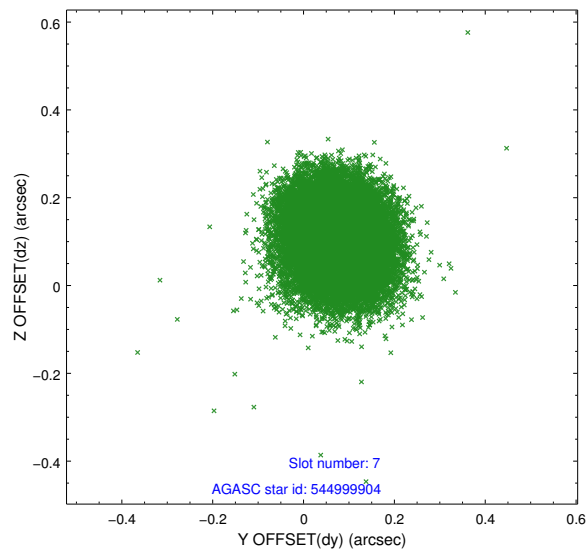
### 2.4.3 Slot 5



## 2.4.4 Slot 6

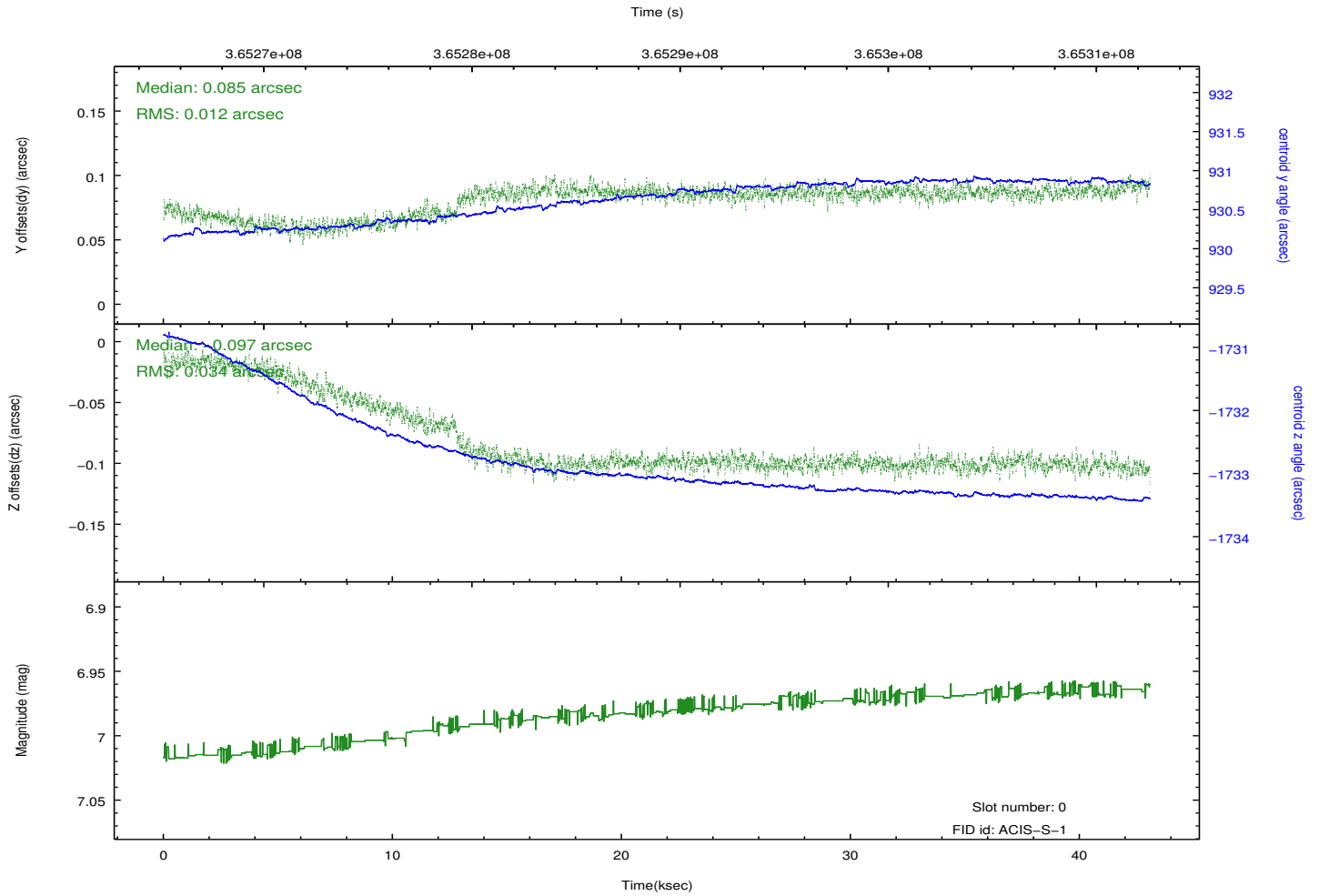
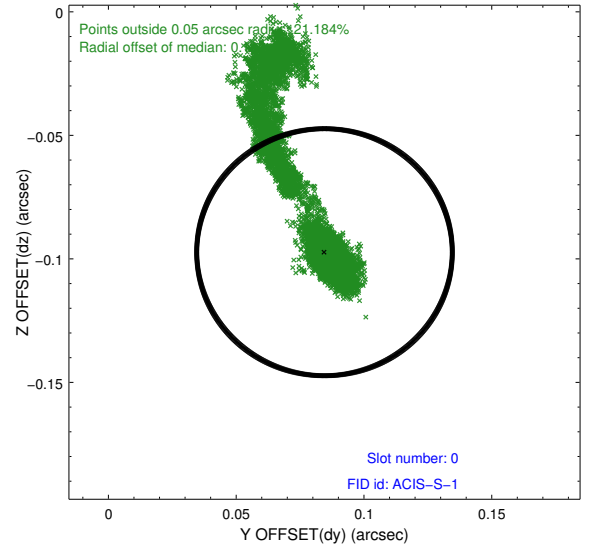
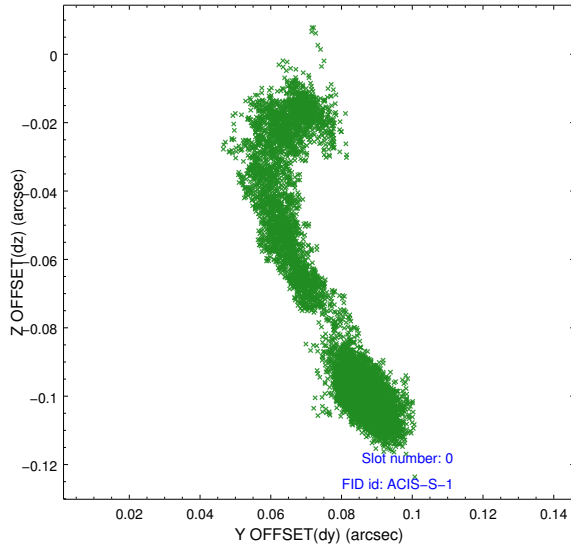


## 2.4.5 Slot 7

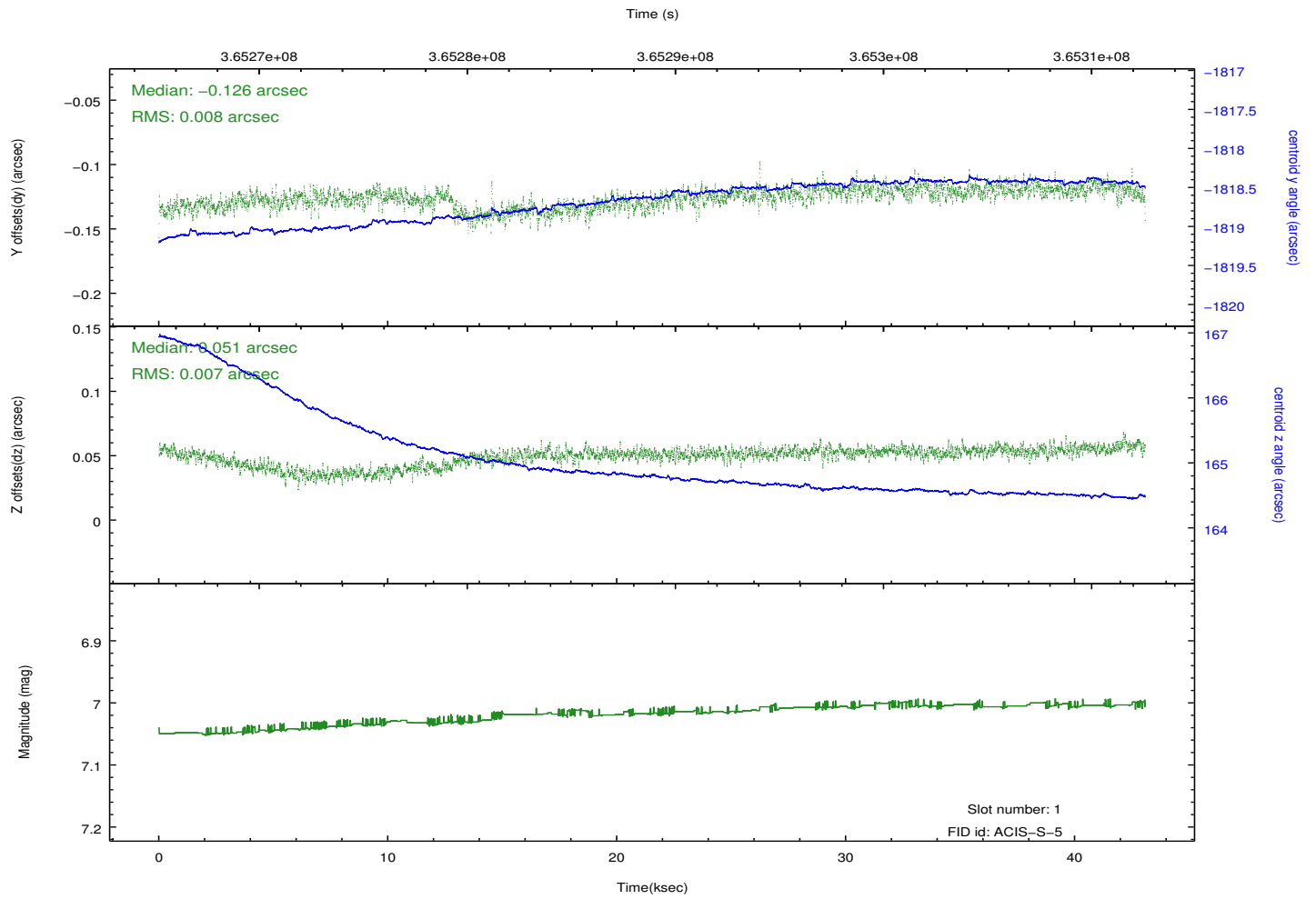
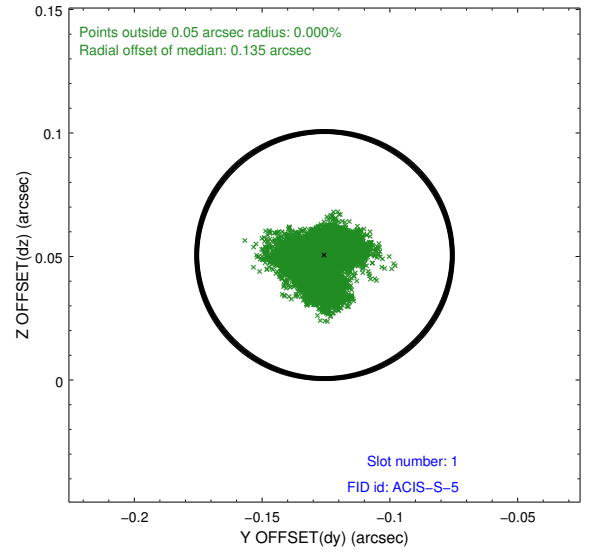
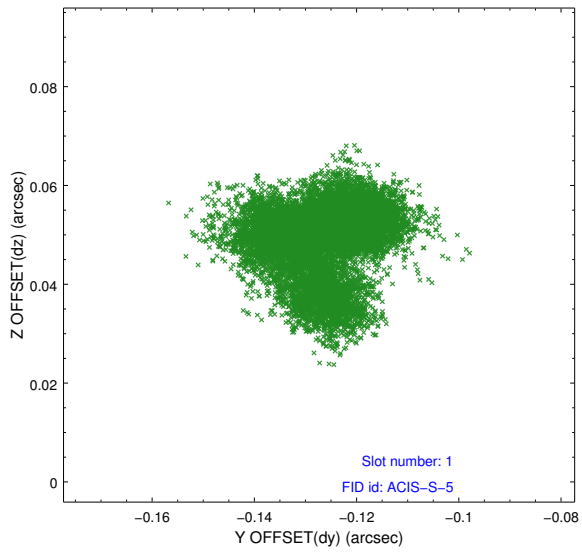


## 2.5 FID Slots

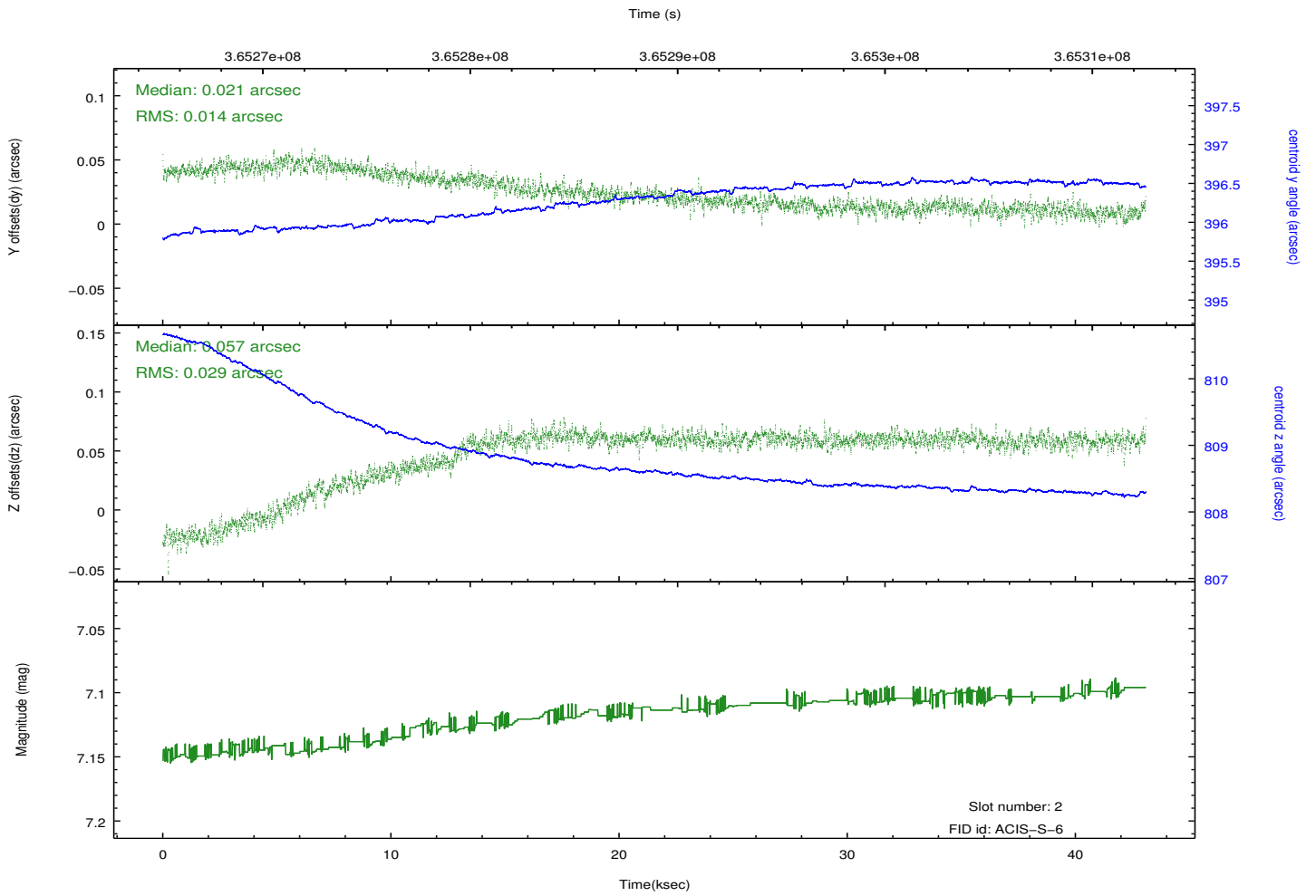
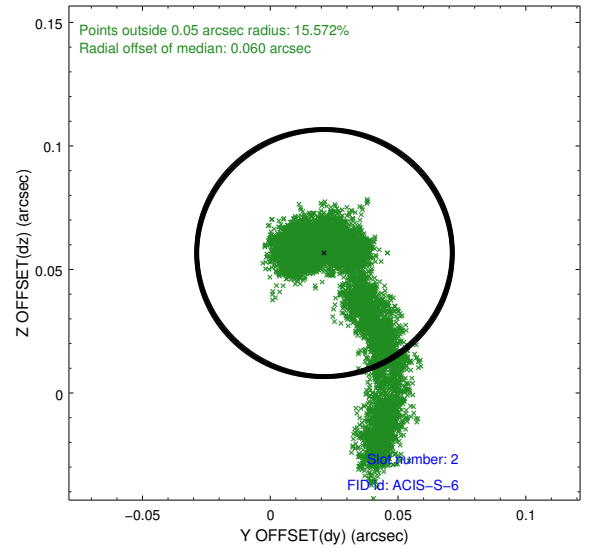
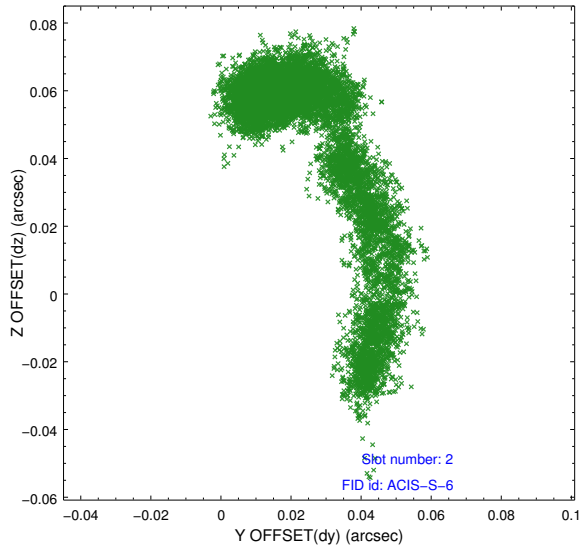
### 2.5.1 Slot 0



## 2.5.2 Slot 1



### 2.5.3 Slot 2



# A Summary

## A.1 Status

V&V Scientist	Jen Lauer
V&V Date (YYYY-MM-DD)	2012.06.14
V&V Edition	1
V&V Disposition and Status	OK
V&V Charge Time	43.0751998

## A.2 Comments