

V&V Reference Report

L2 ASCDS Version : 8.4.4

Observation 10442 - L2 Version 2
Chandra X-Ray Center

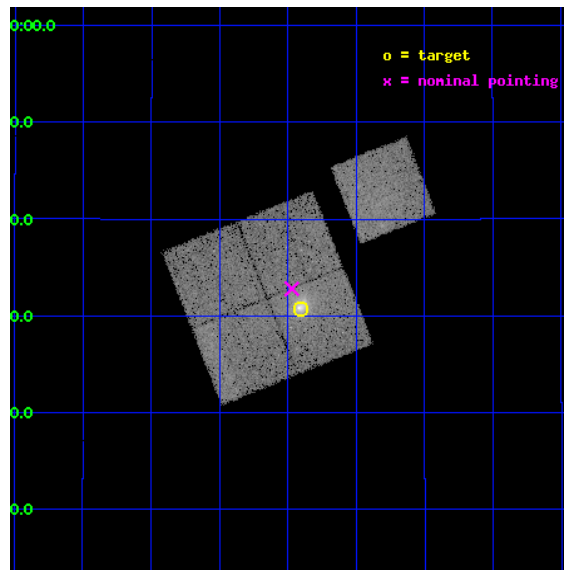
L2 Processing Date : May 29 2012

Contents

1	Front	2
2	OBI	3
2.1	OBI	3
2.1.1	Images	3
2.1.2	Bias	3
2.1.3	Parameters	4
2.1.4	Events	4
2.2	Compared Parameters	5
2.3	Aspect	6
2.4	Star Slots	9
2.4.1	Slot 3	9
2.4.2	Slot 4	10
2.4.3	Slot 5	11
2.4.4	Slot 6	12
2.4.5	Slot 7	13
2.5	FID Slots	14
2.5.1	Slot 0	14
2.5.2	Slot 1	15
2.5.3	Slot 2	16
A	Summary	17
A.1	Status	17
A.2	Comments	17

1 Front

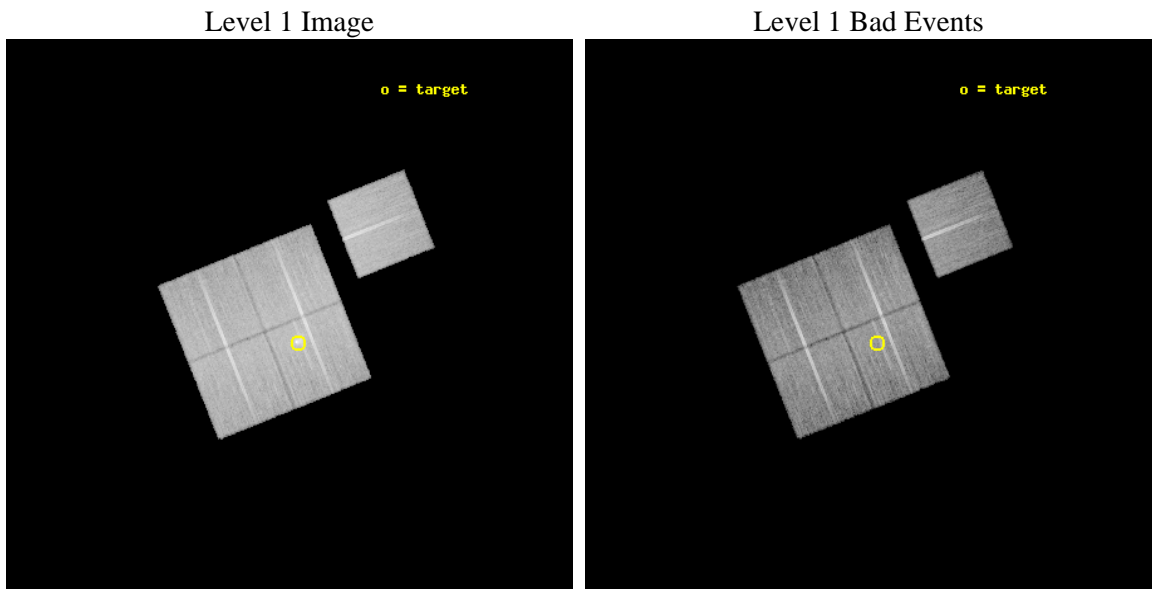
seq_num	800803	Sequence number
obs_id	10442	Observation id
title	LoCuSS: An Unbiased Multi-wavelength Study of the Cluster Quadchotomy - Gas Cooling and Cluster Merging at z=0.2	Proposal title
observer	Dr Graham Smith	Principal investigator
object	ABELL 0598	Source name
dtcycle	0	
cycle	P	events from which exps? Prim/Second/Both
ra_targ	117.85125	Observer's specified target RA [deg]
dec_targ	17.512222	Observer's specified target Dec [deg]
ra_nom	117.8677594879	Nominal RA [deg]
dec_nom	17.546567348699	Nominal Dec [deg]
roll_nom	68.203731698706	Nominal Roll [deg]
revision	2	Processing version of data
ontime	20043.211972117	Sum of GTIs [s]
livetime	19781.332652104	Livetime [s]
ontime0	20043.088852108	Sum of GTIs [s]
ontime1	20039.988911808	Sum of GTIs [s]
ontime2	20043.170932114	Sum of GTIs [s]
ontime3	20043.211972117	Sum of GTIs [s]
ontime6	20043.047812104	Sum of GTIs [s]
l2events	83947	Number of level 2 events



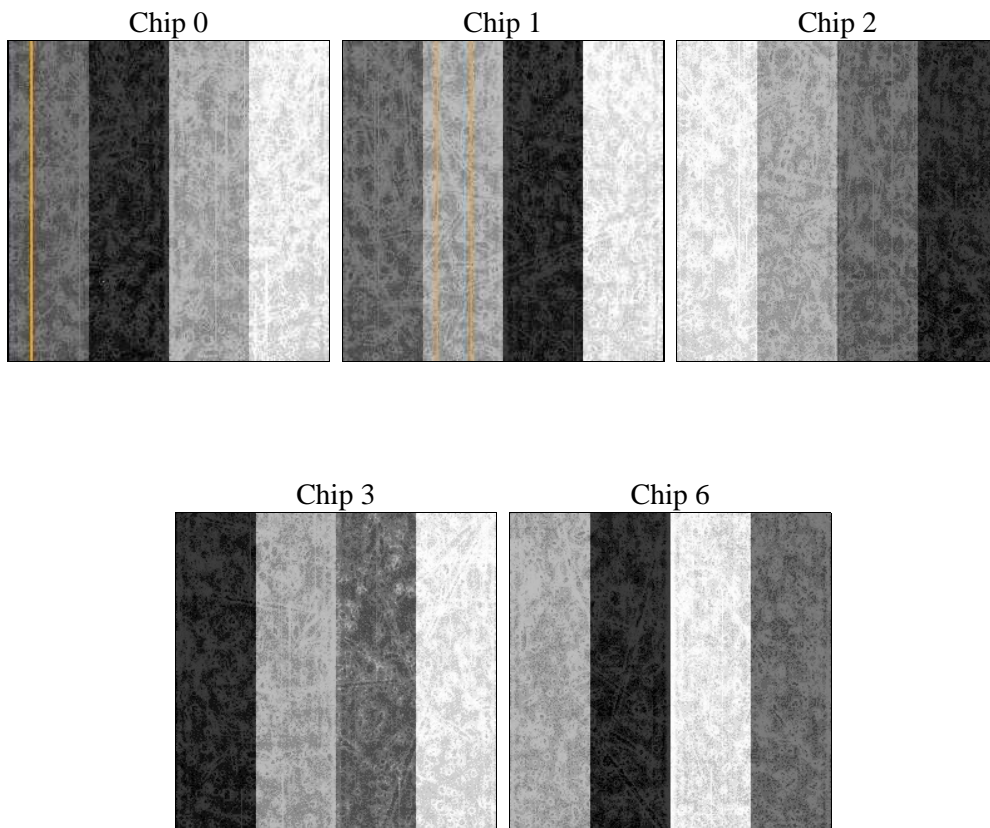
2 OBI

2.1 OBI

2.1.1 Images



2.1.2 Bias



2.1.3 Parameters

obi_num	1	Obi number	sched_exp_time	20000.000000	[s] Scheduled observation exposure time
ascdsver	8.4.4	Processing system revision	ontime	20043.211972117	Sum of GTIs [s]
caldbver	4.4.9	 	ontime0	20043.088852108	Sum of GTIs [s]
date	2012-05-29T14:45:07	Date and time of file creation	ontime1	20039.988911808	Sum of GTIs [s]
revision	2	Processing version of data	ontime2	20043.170932114	Sum of GTIs [s]
			ontime3	20043.211972117	Sum of GTIs [s]
			ontime6	20043.047812104	Sum of GTIs [s]
			l1events	837721	Number of level 1 events

2.1.4 Events

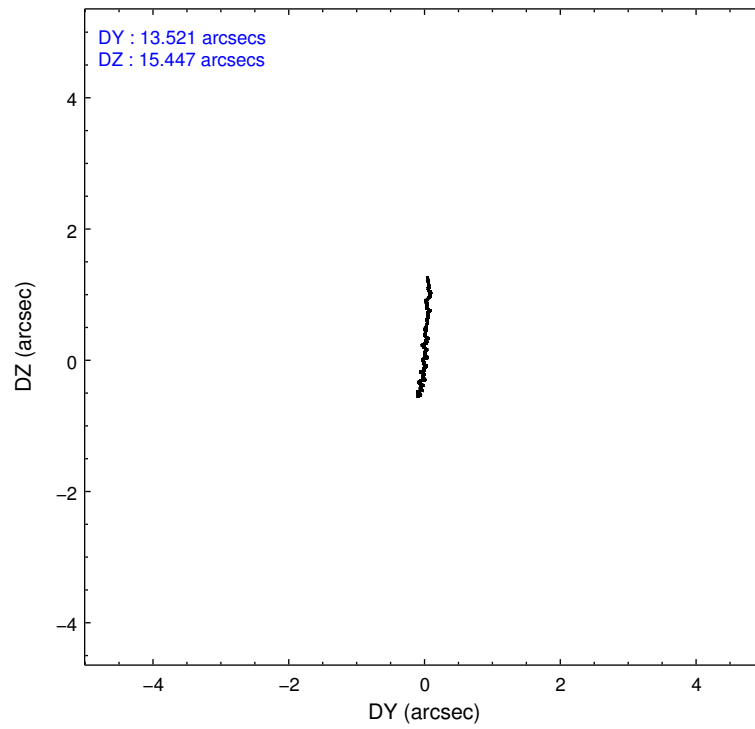
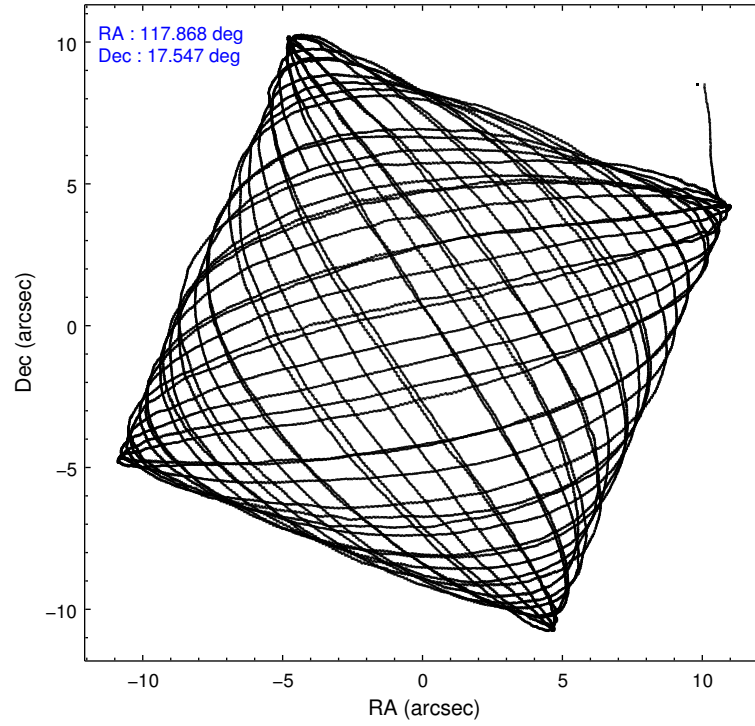
	ccd 0	ccd 1	ccd 2	ccd 3	ccd 6
level 1 events	154772	161098	173693	177374	170784
rejected events	137840	141649	156453	152155	150679
rejected %	89%	87%	90%	85%	88%

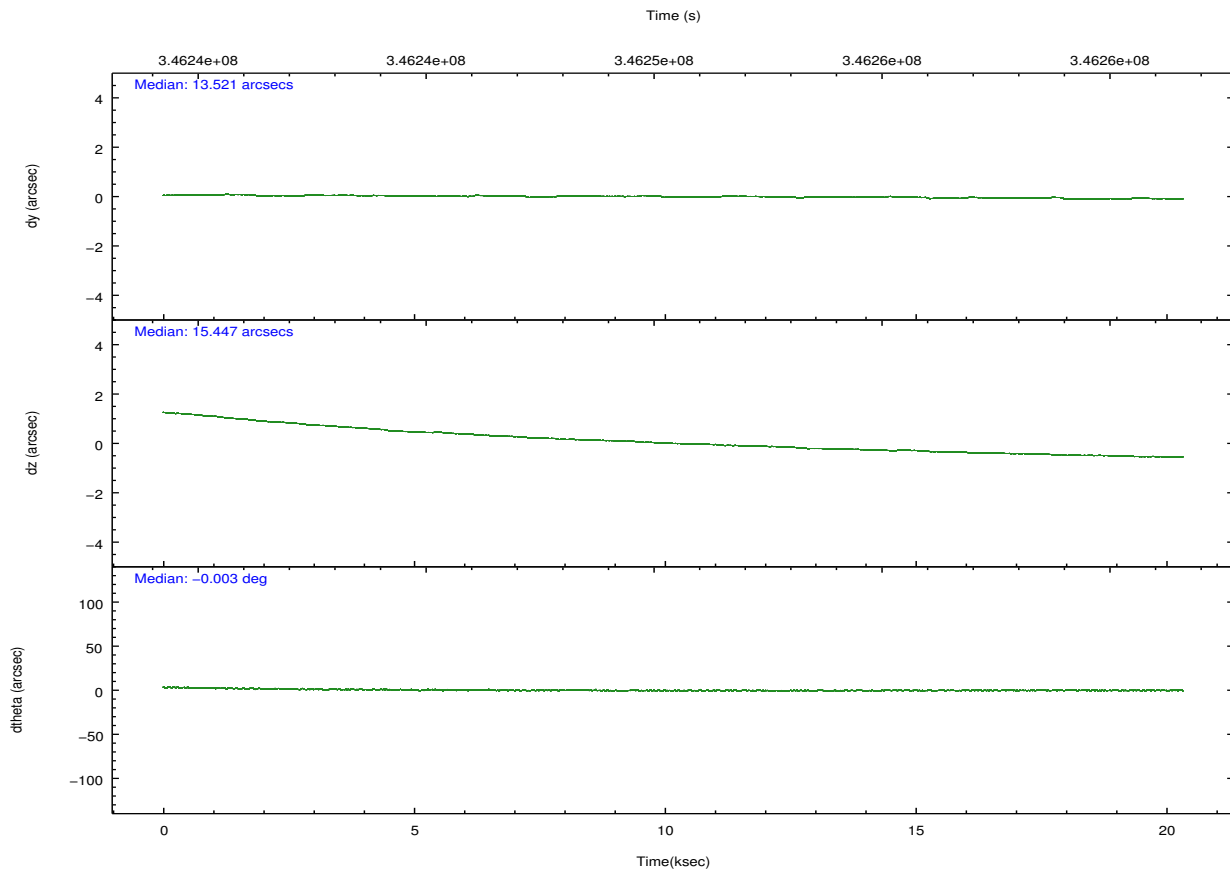
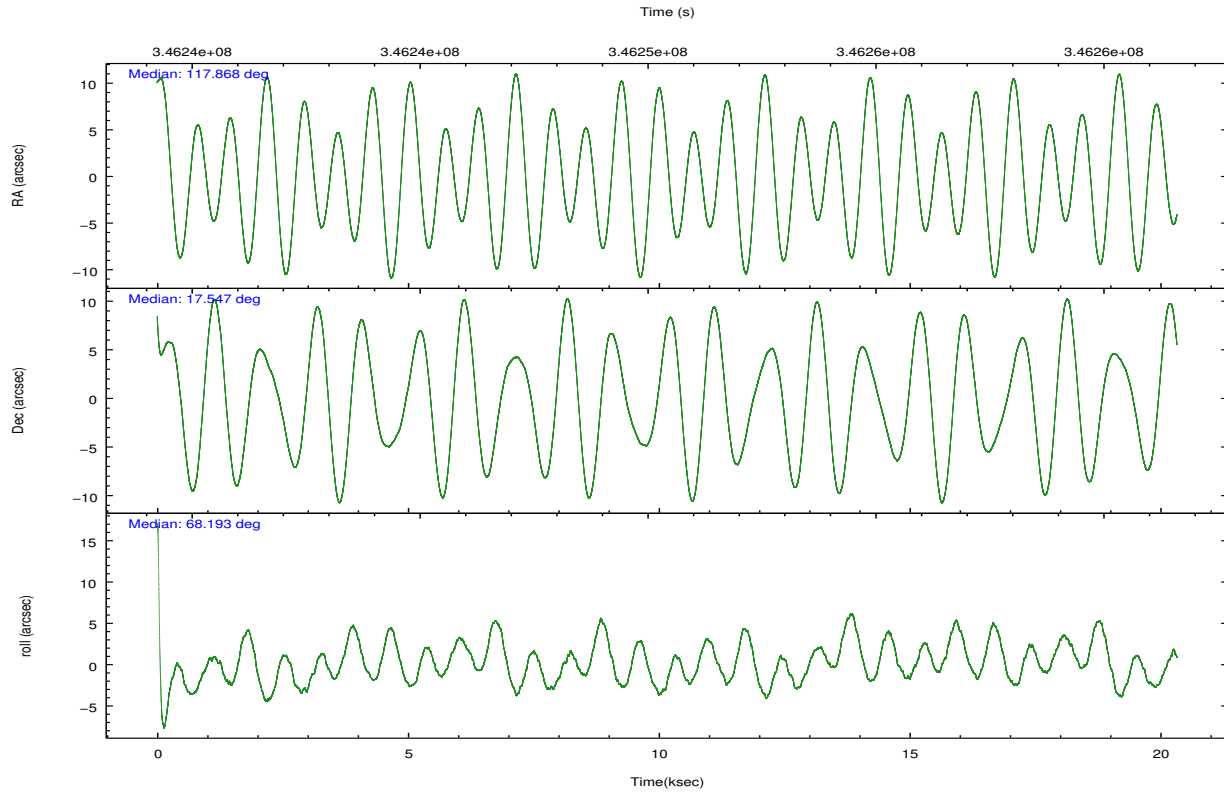
	ccd 0	ccd 1	ccd 2	ccd 3	ccd 6
grade 0 events	5743	7037	6395	13272	8206
	3%	4%	3%	7%	4%
grade 1 events	91	87	103	149	82
	0%	0%	0%	0%	0%
grade 2 events	4174	4404	4120	4322	4217
	2%	2%	2%	2%	2%
grade 3 events	1836	2046	1786	2031	1956
	1%	1%	1%	1%	1%
grade 4 events	1732	2019	1787	2125	1915
	1%	1%	1%	1%	1%
grade 5 events	6142	6662	5665	7128	6836
	3%	4%	3%	4%	4%
grade 6 events	3456	3948	3162	3476	3818
	2%	2%	1%	1%	2%
grade 7 events	131598	134895	150675	144871	143754
	85%	83%	86%	81%	84%

2.2 Compared Parameters

Parameter	Planned	Actual	Parameter	Planned	Actual
Instrument	ACIS	ACIS	Obspar format version number	7	7
Detector	ACIS-01236	ACIS-01236	Obspar file type	PREDICTED	ACTUAL
Grating	NONE	NONE	Obspar update status	NONE	UPDATED
Data mode	VFAINT	VFAINT	Number of optional ACIS chips dropped	0	0
Observation mode	POINTING	POINTING	On-chip summing requested	N	N
[deg] Pointing RA	117.871987	117.867759487901	Subarray requested	NONE	NONE
[deg] Pointing Dec	17.519336	17.54656734869896	Alternating exposures requested	N	N
[deg] Pointing Roll	67.993759	68.20373169870558	[s] Primary exposure time	0.000000	3.1
[mm] SIM focus pos	-0.782348	-0.7809083437167272			
[mm] SIM defocus	0	0.001439871863259334			
[mm] SIM translation stage pos	-227.592463	-227.5933067819097			
[mm] SIM translation stage offset	-6	-5.999146221020027			
[s] Observation start time (MET)	346240574.184000	346239517.17741			
Observation start date	2008-12-21T09:55:09	2008-12-21T09:38:37			
[s] Observation end time (MET)	346260574.184000	346261623.866			
Observation end date	2008-12-21T15:28:29	2008-12-21T15:47:03			
Read mode	TIMED	TIMED			

2.3 Aspect



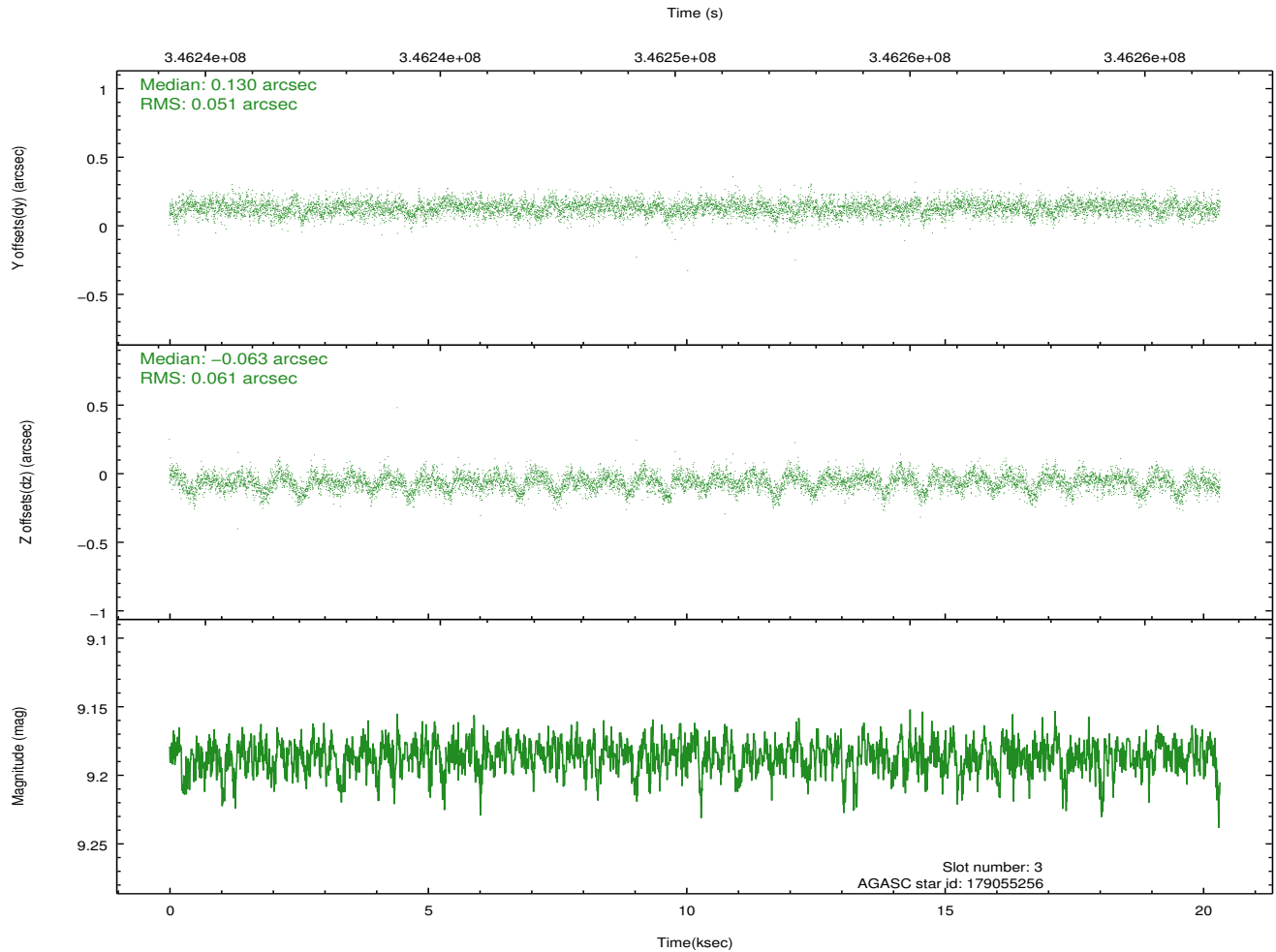
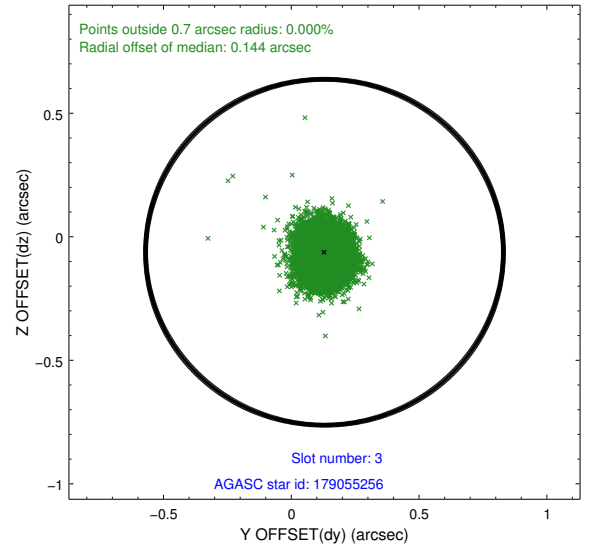
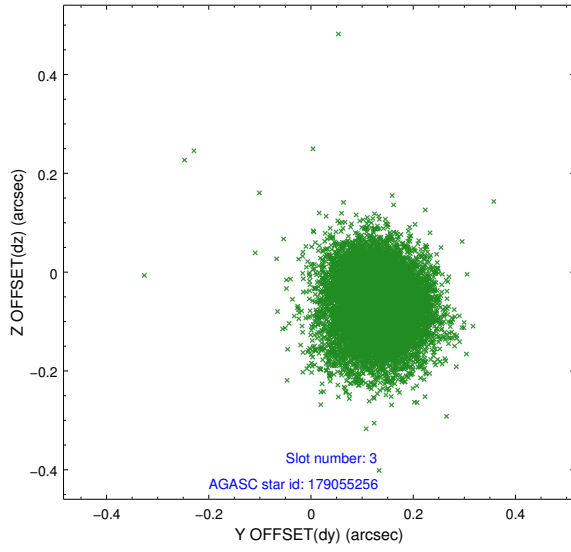


Slot Statistics

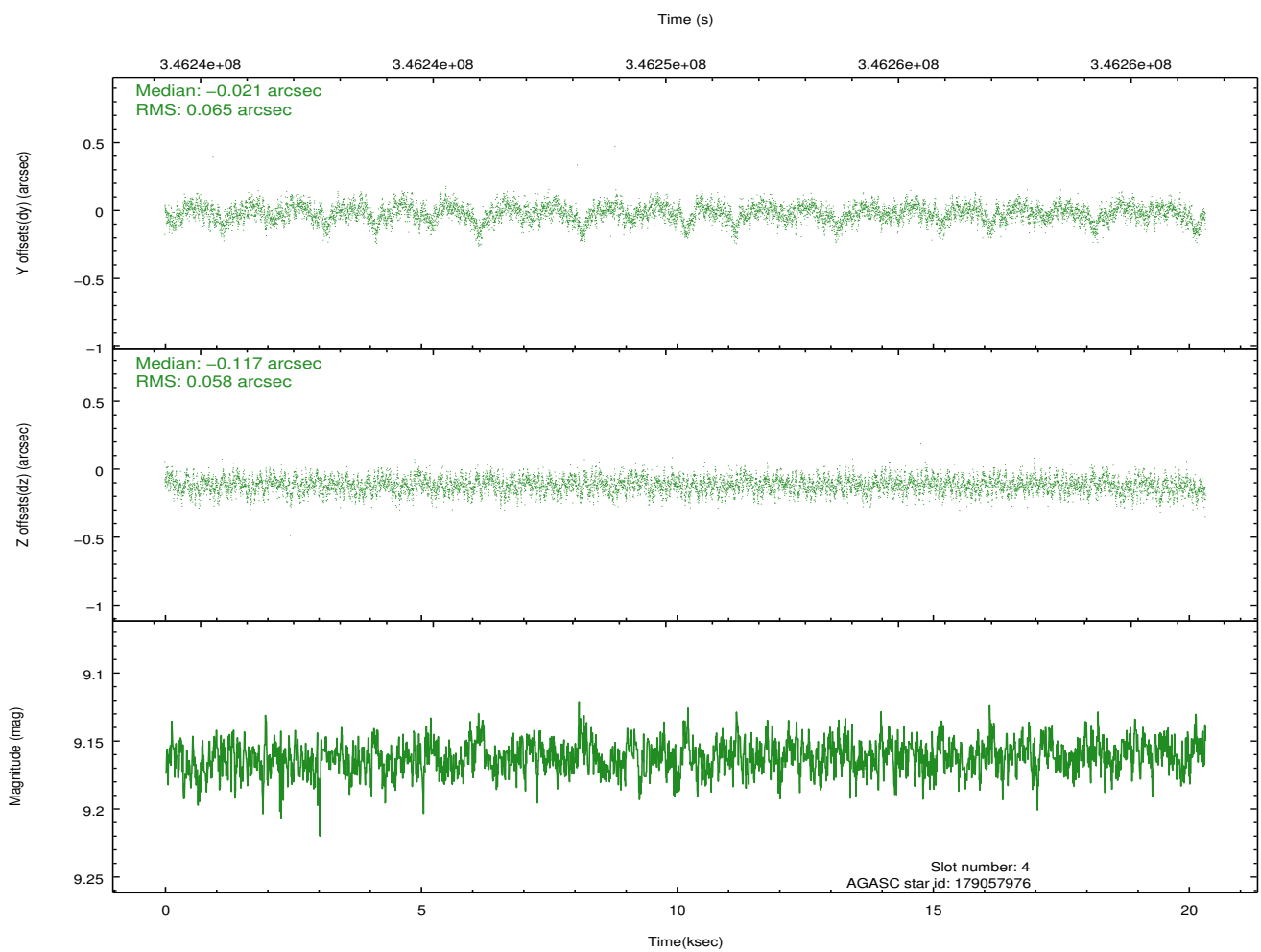
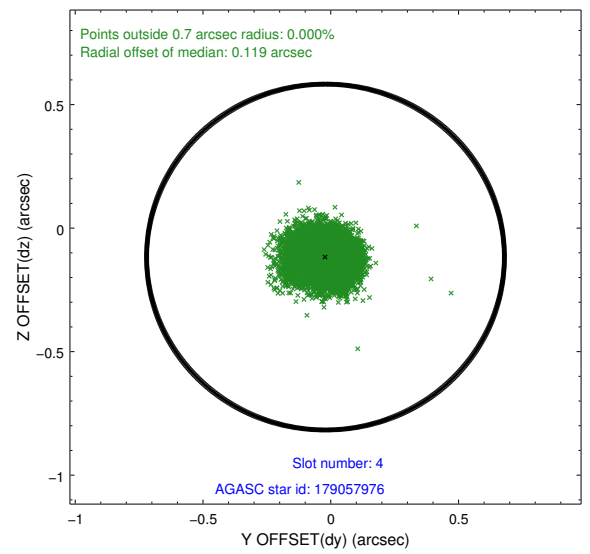
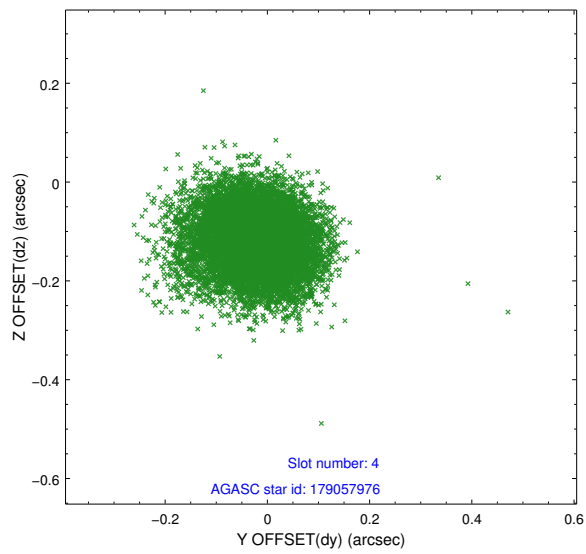
slot	status	id	mag	n_pts	med_dy	med_dz	dr1	dr2	ra	dec	mean_y	mean_z
0	FID	ACIS-I-1	7.01	4959	0.078	-0.029	0.012	0.030	0.000000	0.000000	925.97	-962.32
1	FID	ACIS-I-5	7.00	4958	-0.257	0.071	0.009	0.017	0.000000	0.000000	-1822.40	935.11
2	FID	ACIS-I-6	7.02	4958	0.086	0.030	0.011	0.020	0.000000	0.000000	391.28	1579.82
3	GUIDE	179055256	9.19	9911	0.130	-0.063	0.084	0.138	117.542481	18.229950	1950.19	2003.90
4	GUIDE	179057976	9.16	9911	-0.021	-0.117	0.092	0.149	117.462702	18.034300	1195.29	1994.35
5	GUIDE	179062464	8.73	9911	-0.019	-0.092	0.080	0.127	117.645832	17.473734	-442.58	658.51
6	GUIDE	179175616	9.13	9912	0.078	0.145	0.087	0.143	118.678750	17.720147	1712.98	-2291.73
7	GUIDE	179195152	7.34	9915	-0.160	0.133	0.052	0.085	118.369745	17.780544	1513.68	-1228.84

2.4 Star Slots

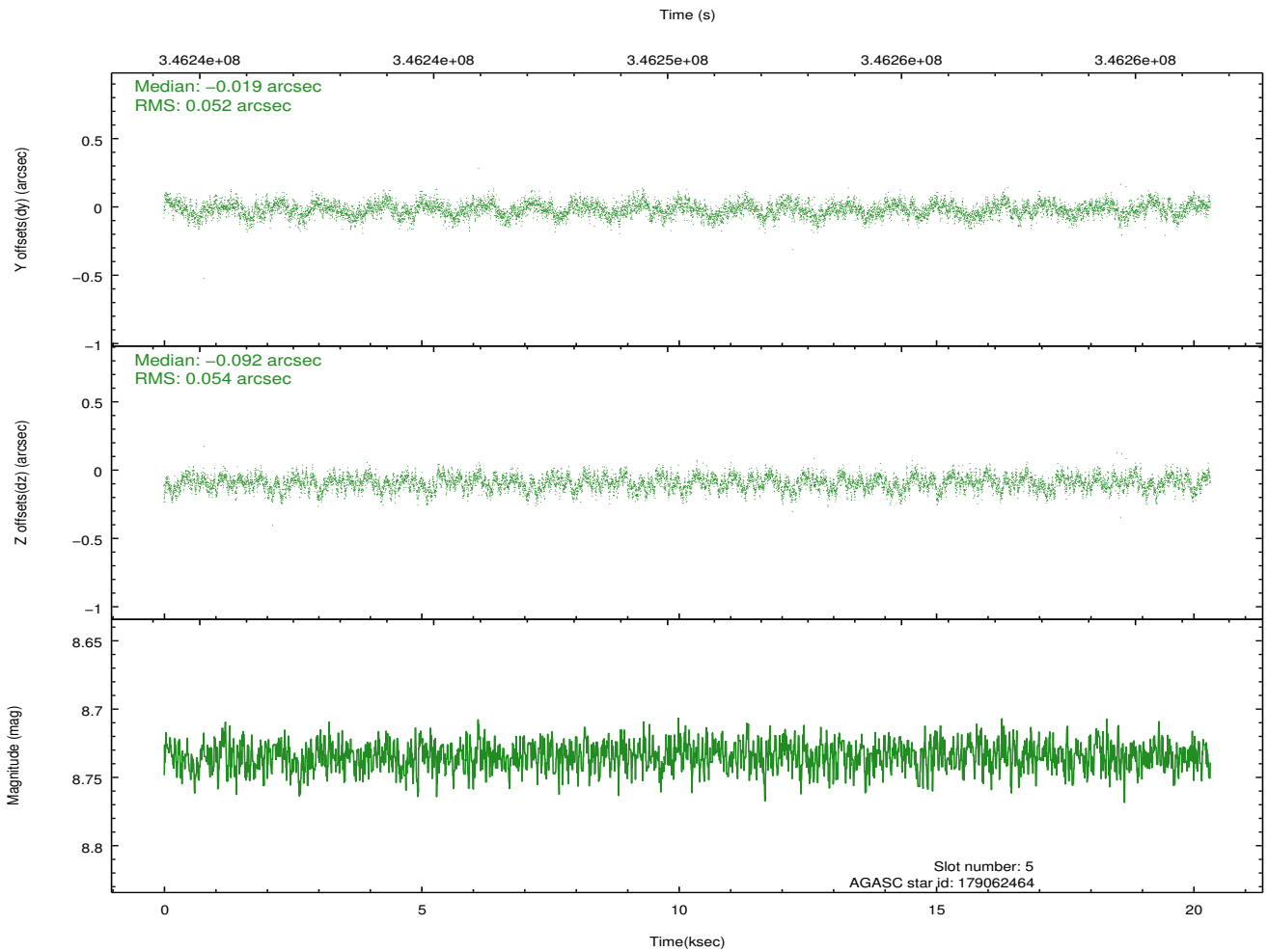
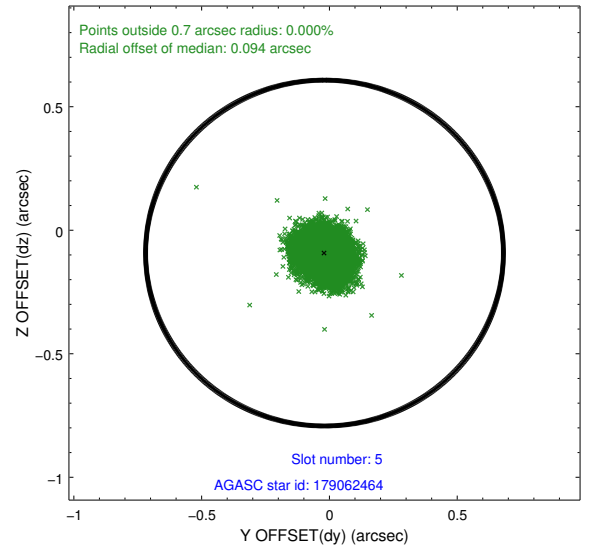
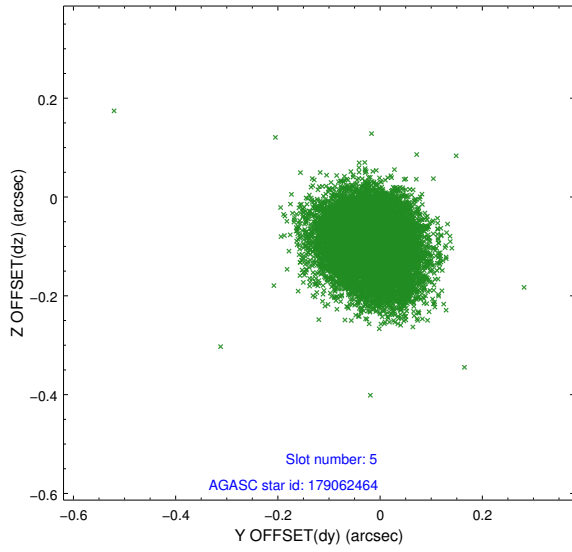
2.4.1 Slot 3



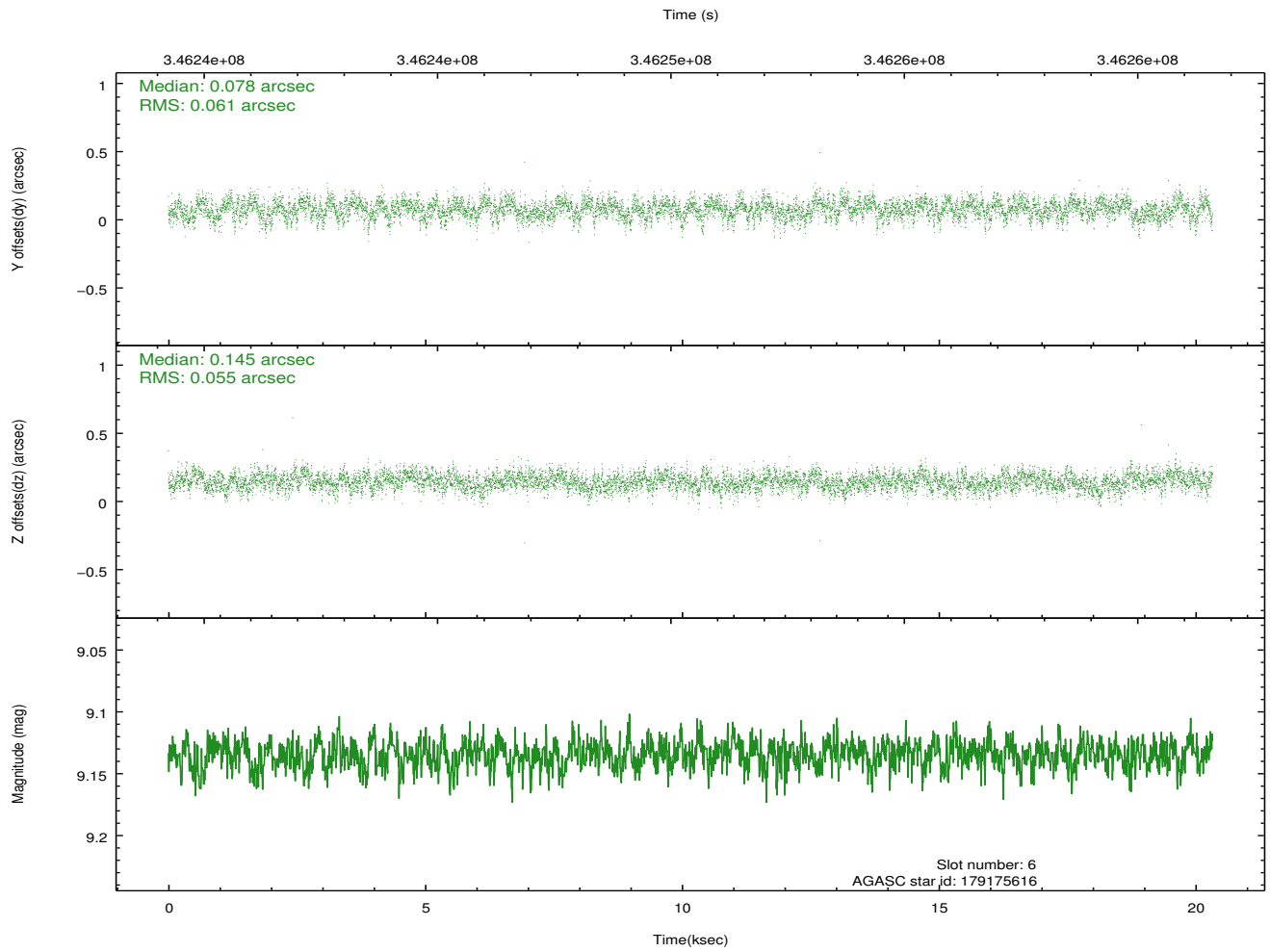
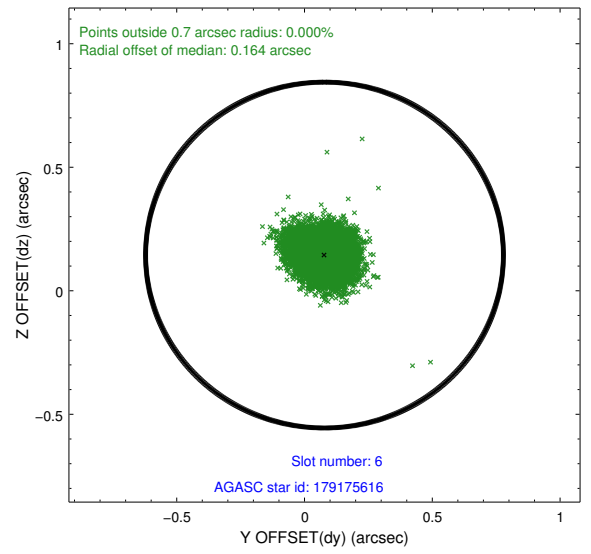
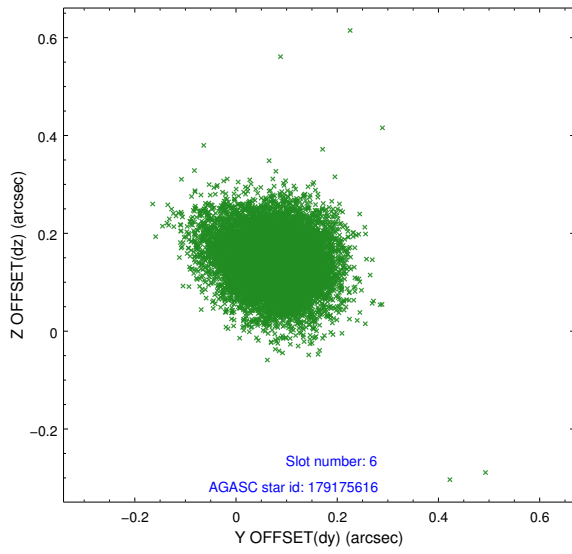
2.4.2 Slot 4



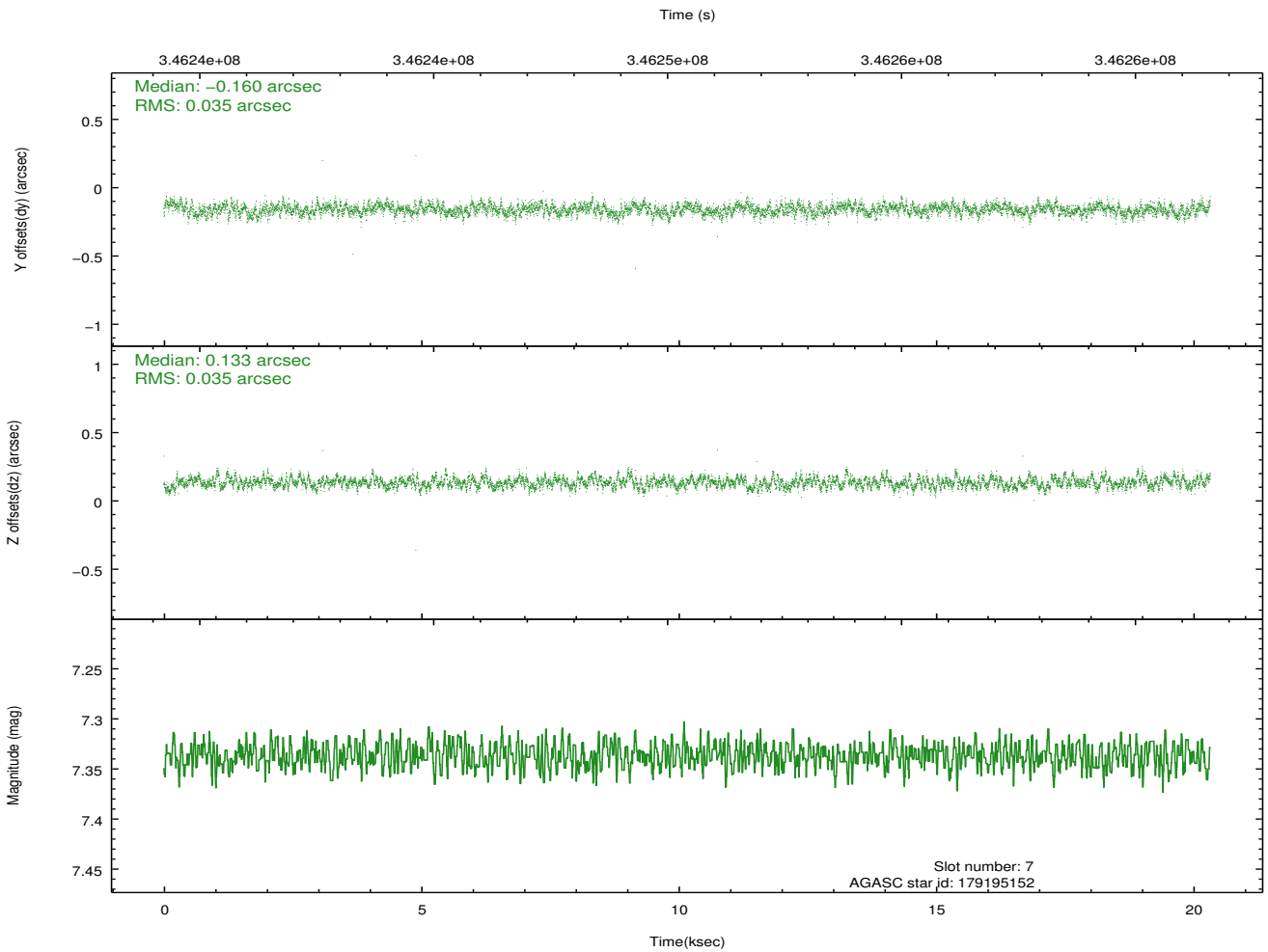
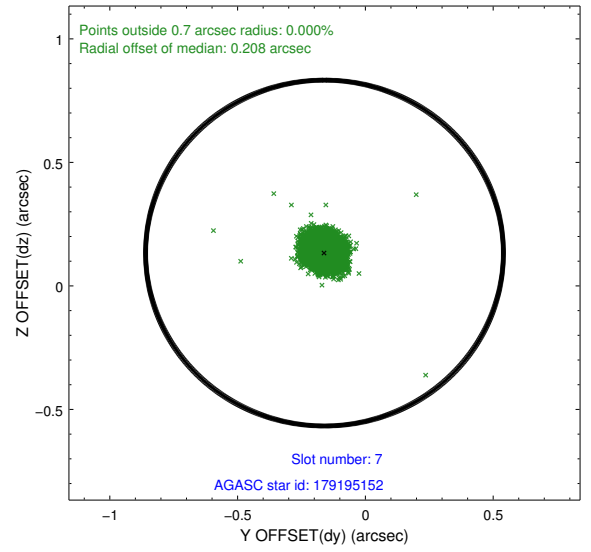
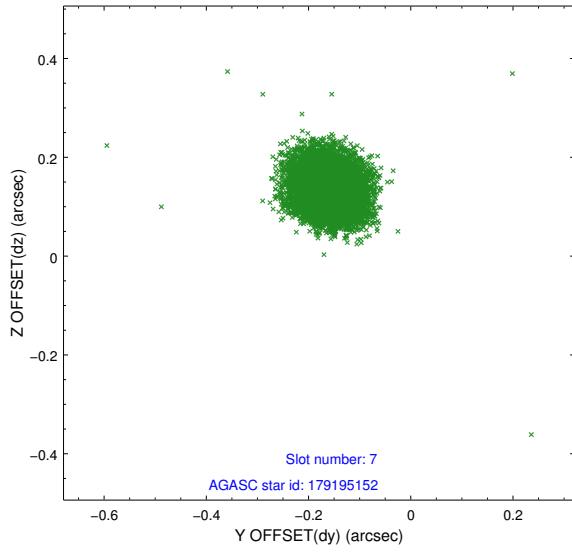
2.4.3 Slot 5



2.4.4 Slot 6

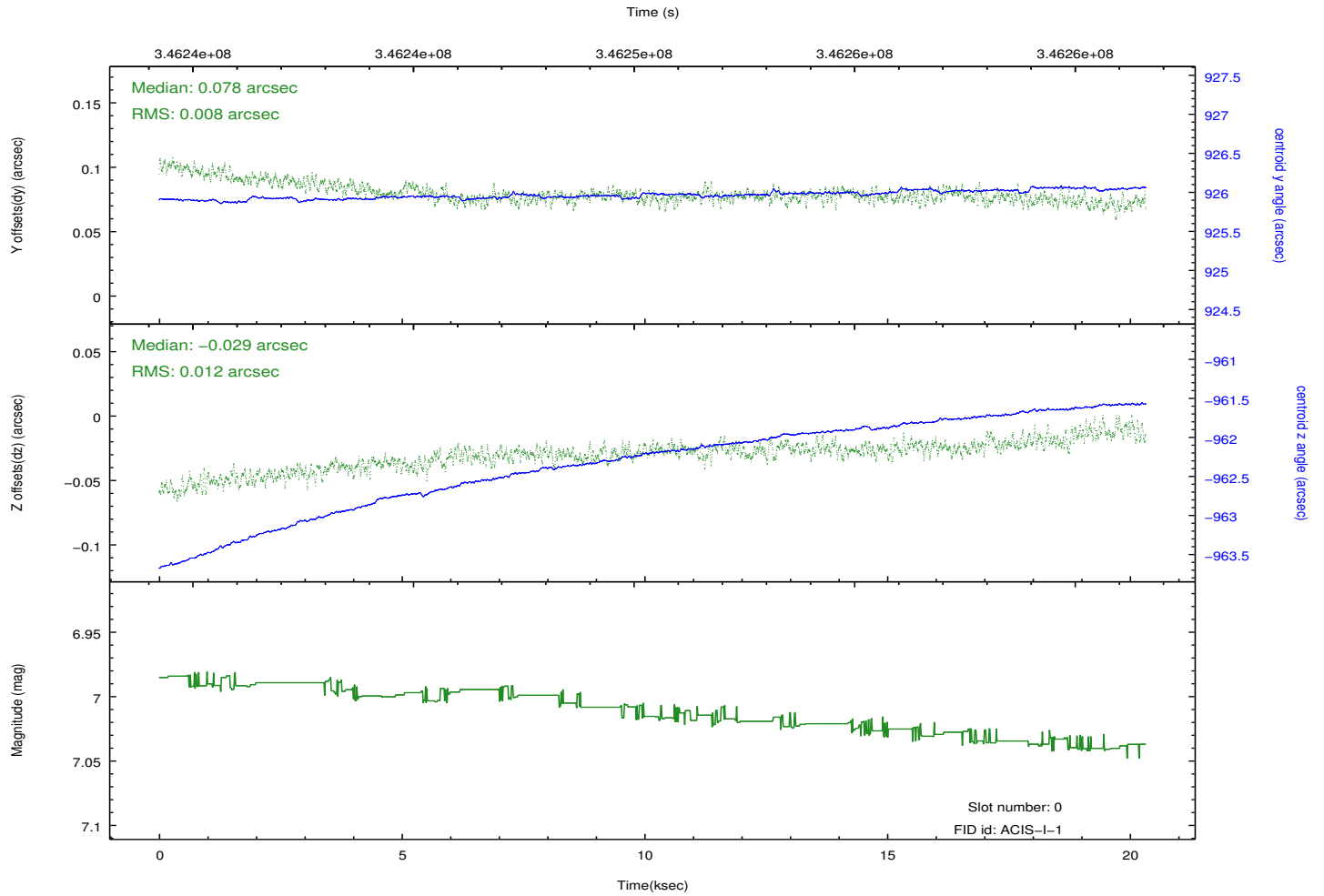
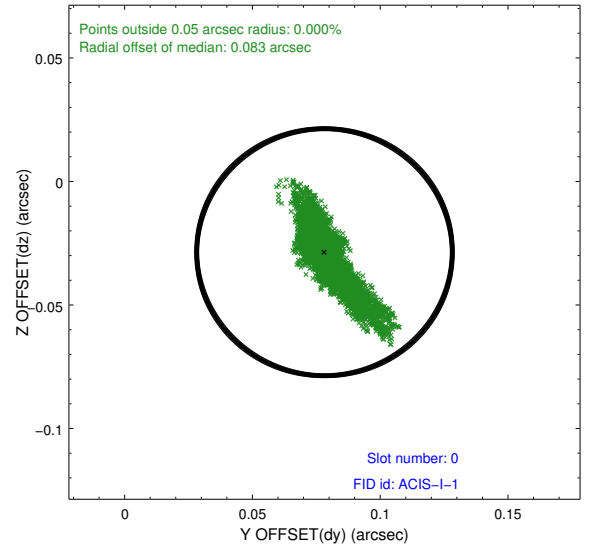
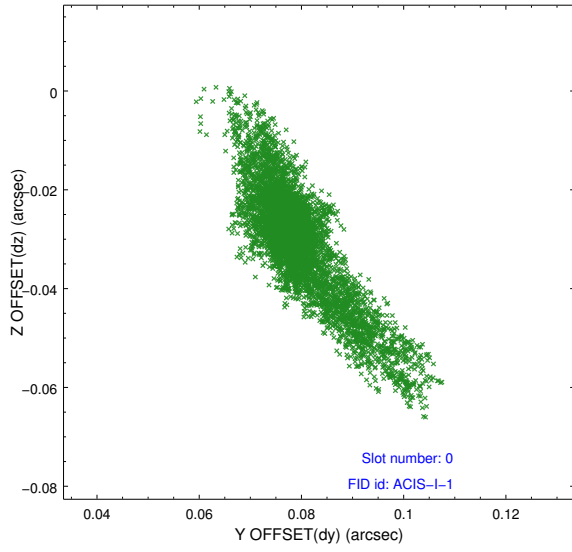


2.4.5 Slot 7

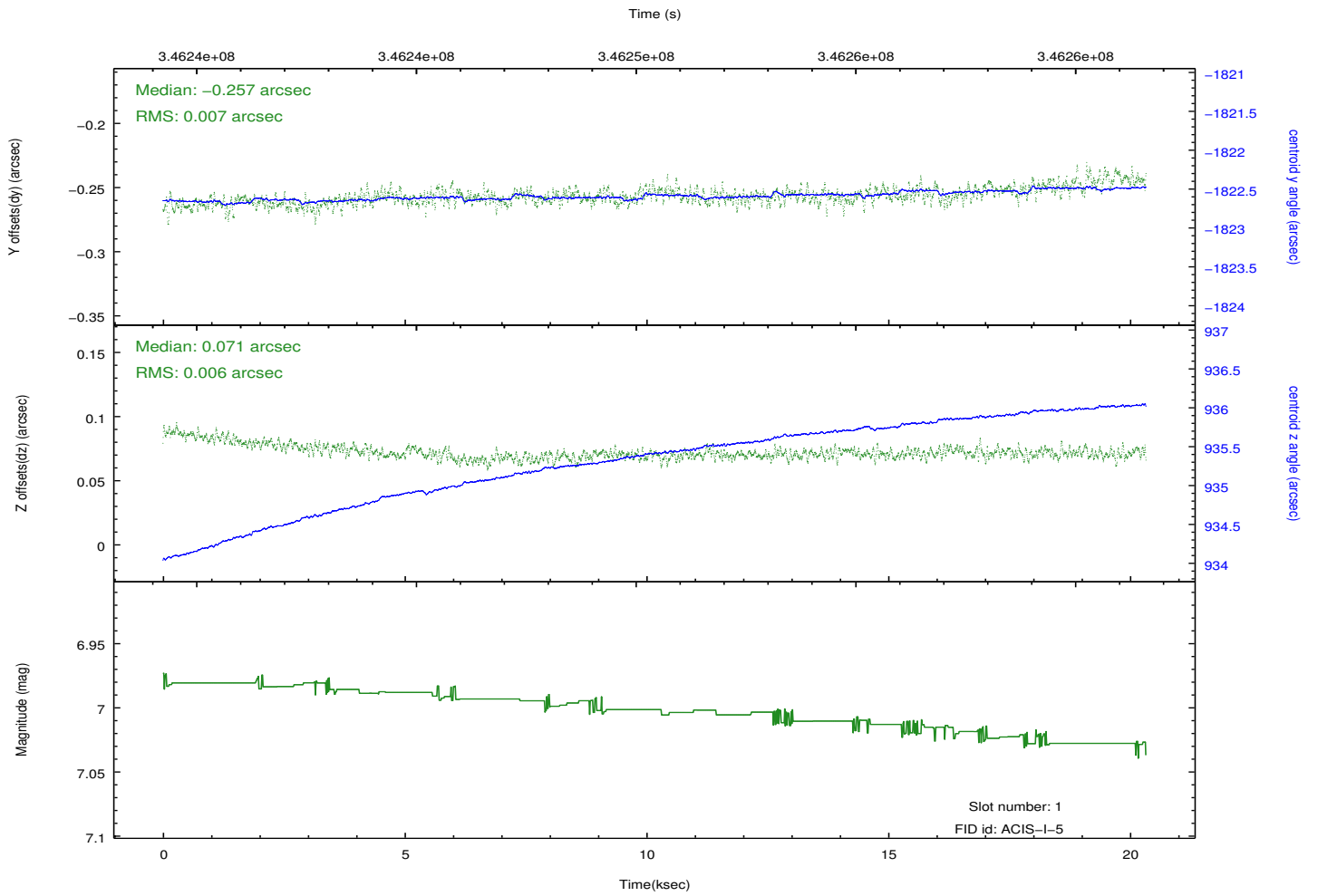
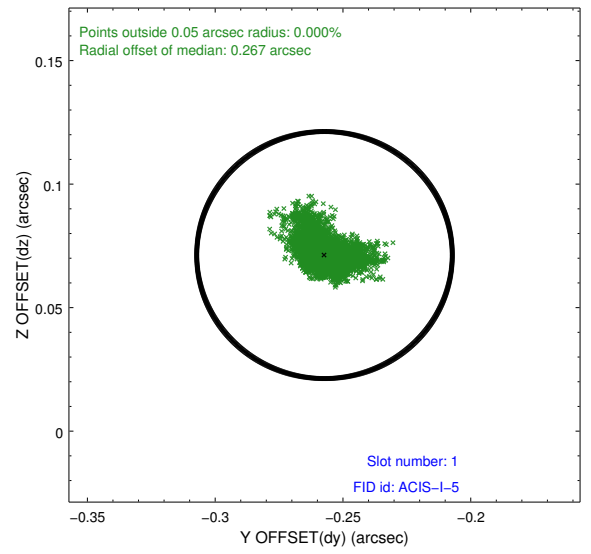
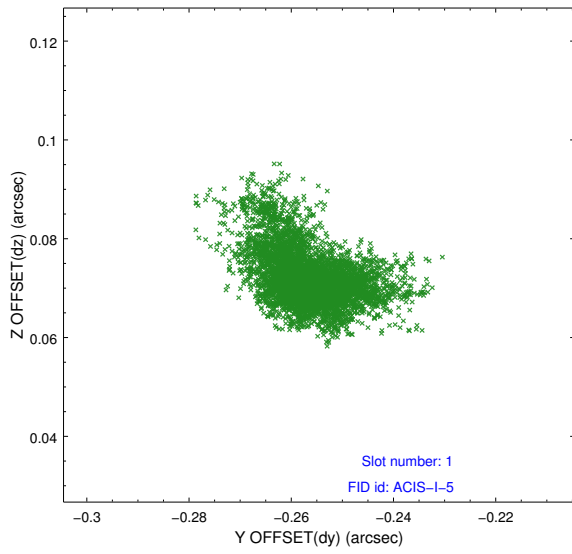


2.5 FID Slots

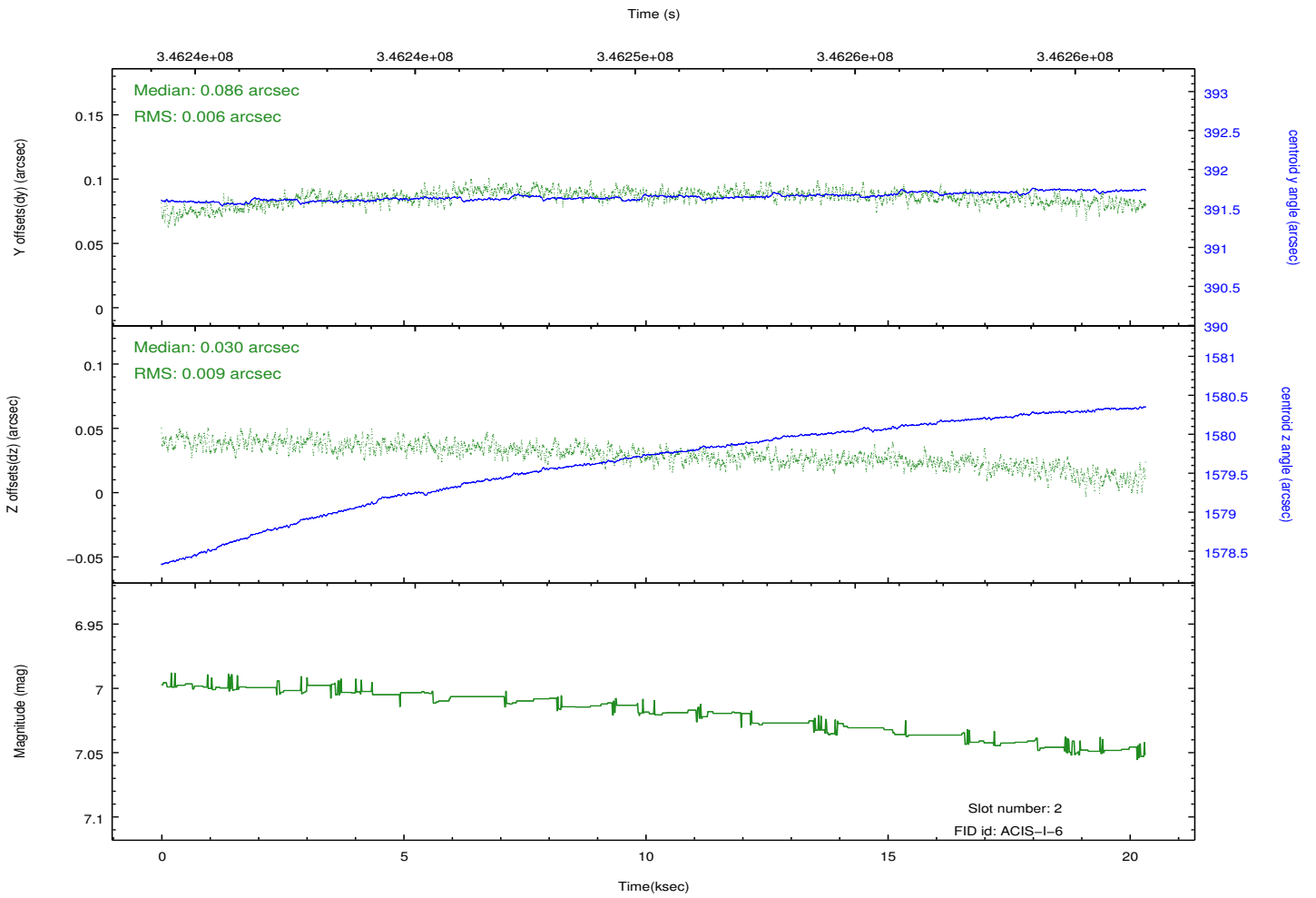
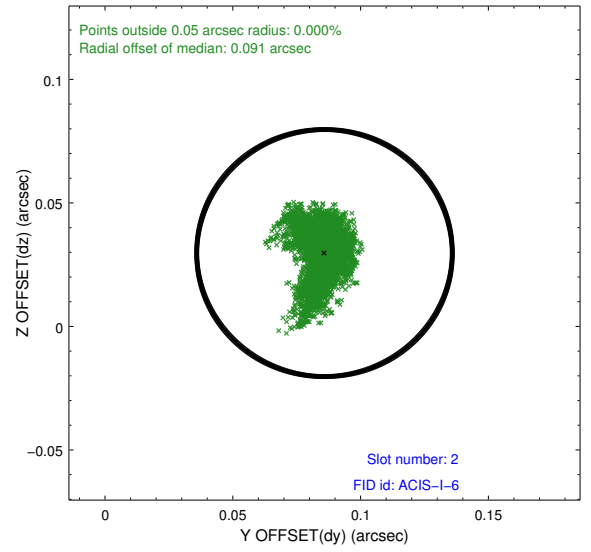
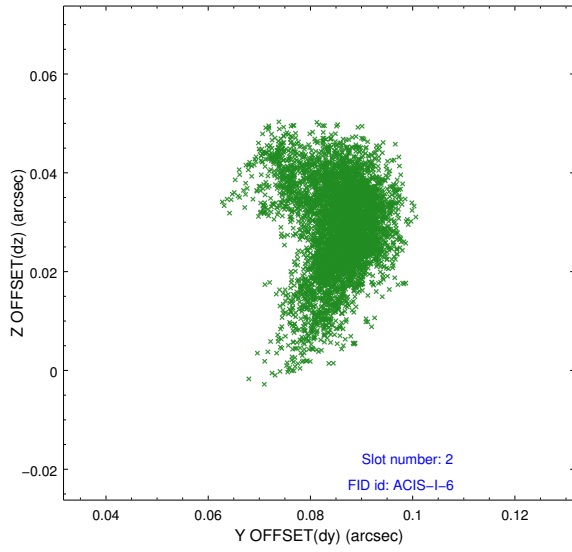
2.5.1 Slot 0



2.5.2 Slot 1



2.5.3 Slot 2



A Summary

A.1 Status

V&V Scientist	Jen Lauer
V&V Date (YYYY-MM-DD)	2012.06.04
V&V Edition	1
V&V Disposition and Status	OK
V&V Charge Time	20.0446001

A.2 Comments