

V&V Reference Report

L2 ASCDS Version : 8.4.5

Observation 10452 - L2 Version 2
Chandra X-Ray Center

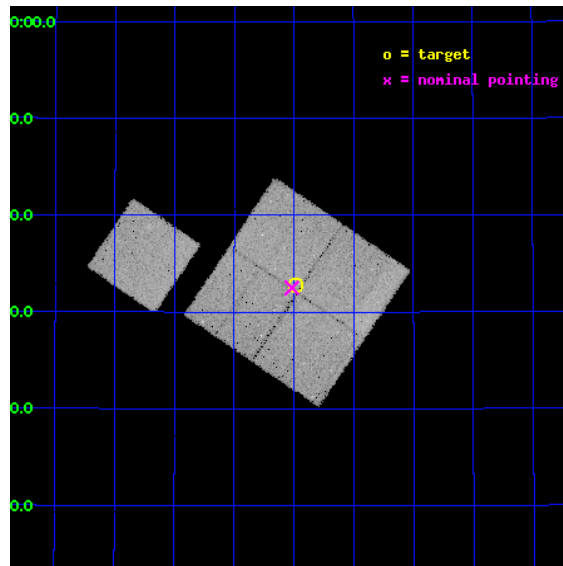
L2 Processing Date : Jun 13 2012

Contents

1	Front	2
2	OBI	3
2.1	OBI	3
2.1.1	Images	3
2.1.2	Bias	3
2.1.3	Parameters	4
2.1.4	Events	4
2.2	Compared Parameters	5
2.3	Aspect	6
2.4	Star Slots	9
2.4.1	Slot 3	9
2.4.2	Slot 4	10
2.4.3	Slot 5	11
2.4.4	Slot 6	12
2.4.5	Slot 7	13
2.5	FID Slots	14
2.5.1	Slot 0	14
2.5.2	Slot 1	15
2.5.3	Slot 2	16
A	Summary	17
A.1	Status	17
A.2	Comments	17

1 Front

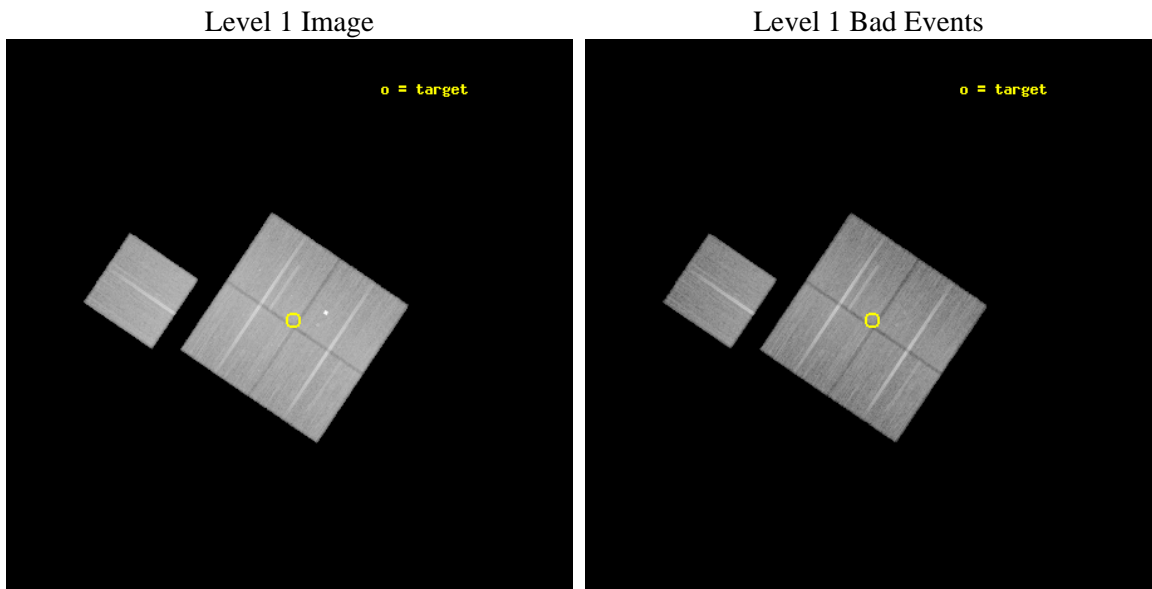
seq_num	800813	Sequence number
obs_id	10452	Observation id
title	The Role of AGN in Massive Galaxy Formation	Proposal title
observer	Dr. Spencer Stanford	Principal investigator
object	ISCS1017	Source name
dtcycle	0	
cycle	P	events from which exps? Prim/Second/Both
ra_targ	218.121667	Observer's specified target RA [deg]
dec_targ	33.54675	Observer's specified target Dec [deg]
ra_nom	218.12923405296	Nominal RA [deg]
dec_nom	33.541682680912	Nominal Dec [deg]
roll_nom	304.03803307751	Nominal Roll [deg]
revision	2	Processing version of data
ontime	34769.410588086	Sum of GTIs [s]
livetime	34315.122641885	Livetime [s]
ontime0	34763.005557299	Sum of GTIs [s]
ontime1	34769.328438342	Sum of GTIs [s]
ontime2	34769.369597971	Sum of GTIs [s]
ontime3	34769.410588086	Sum of GTIs [s]
ontime6	34772.387358546	Sum of GTIs [s]
l2events	129857	Number of level 2 events



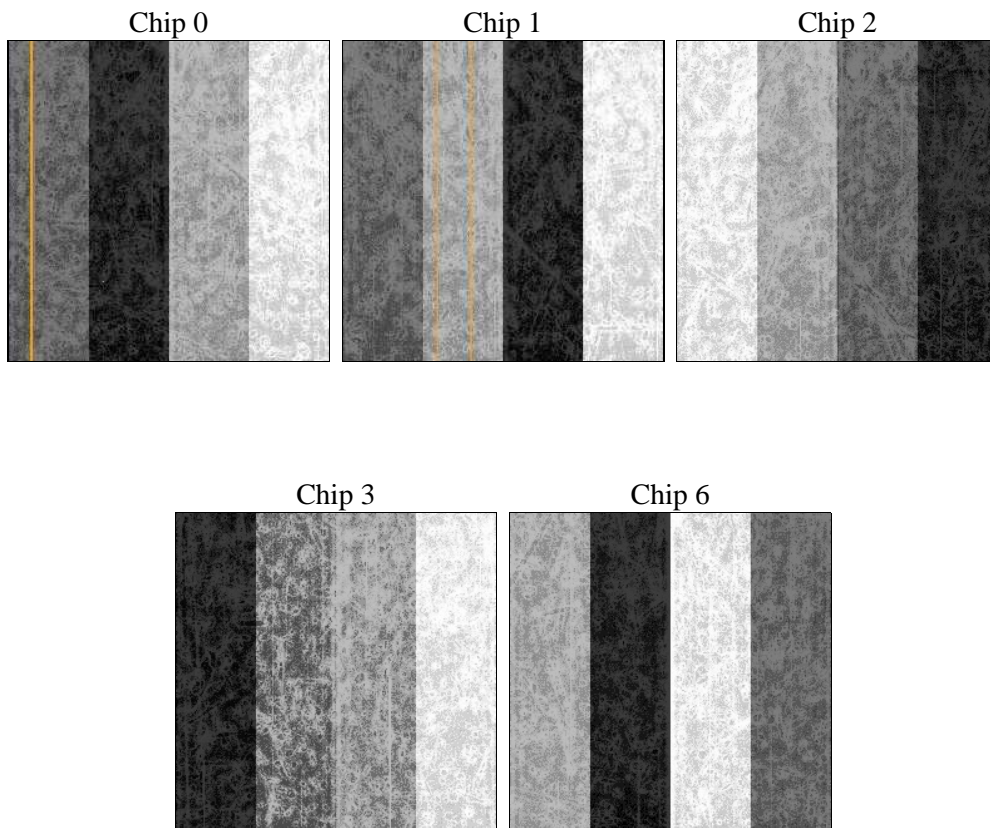
2 OBI

2.1 OBI

2.1.1 Images



2.1.2 Bias



2.1.3 Parameters

obi_num	0	Obi number	sched_exp_time	35000.000000	[s] Scheduled observation exposure time
ascdsver	8.4.5	Processing system revision	ontime	34769.410588086	Sum of GTIs [s]
caldbver	4.4.10	 	ontime0	34763.005557299	Sum of GTIs [s]
date	2012-06-13T21:47:11	Date and time of file creation	ontime1	34769.328438342	Sum of GTIs [s]
revision	2	Processing version of data	ontime2	34769.369597971	Sum of GTIs [s]
			ontime3	34769.410588086	Sum of GTIs [s]
			ontime6	34772.387358546	Sum of GTIs [s]
			l1events	1489713	Number of level 1 events

2.1.4 Events

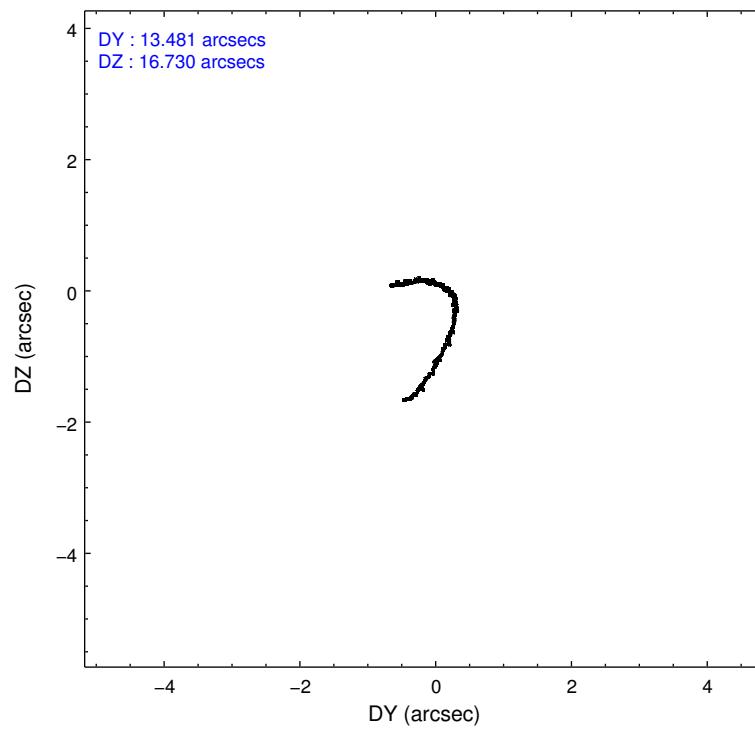
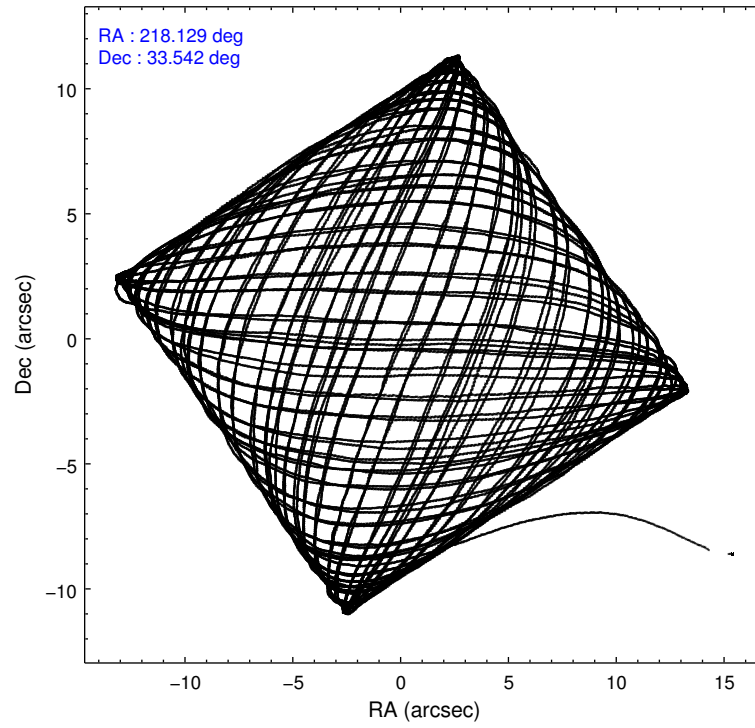
	ccd 0	ccd 1	ccd 2	ccd 3	ccd 6
level 1 events	286660	296516	313800	293052	299685
rejected events	255555	252768	283537	263758	268435
rejected %	89%	85%	90%	90%	89%

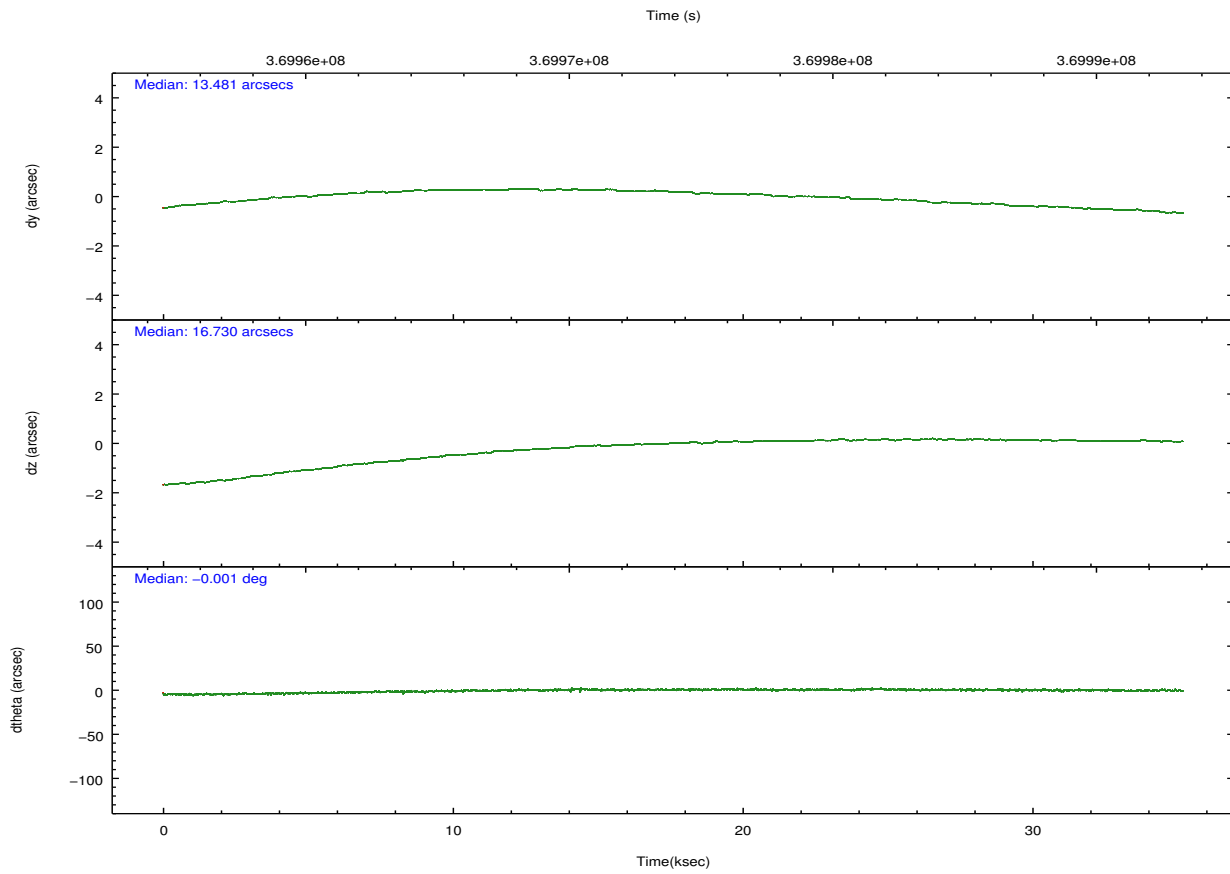
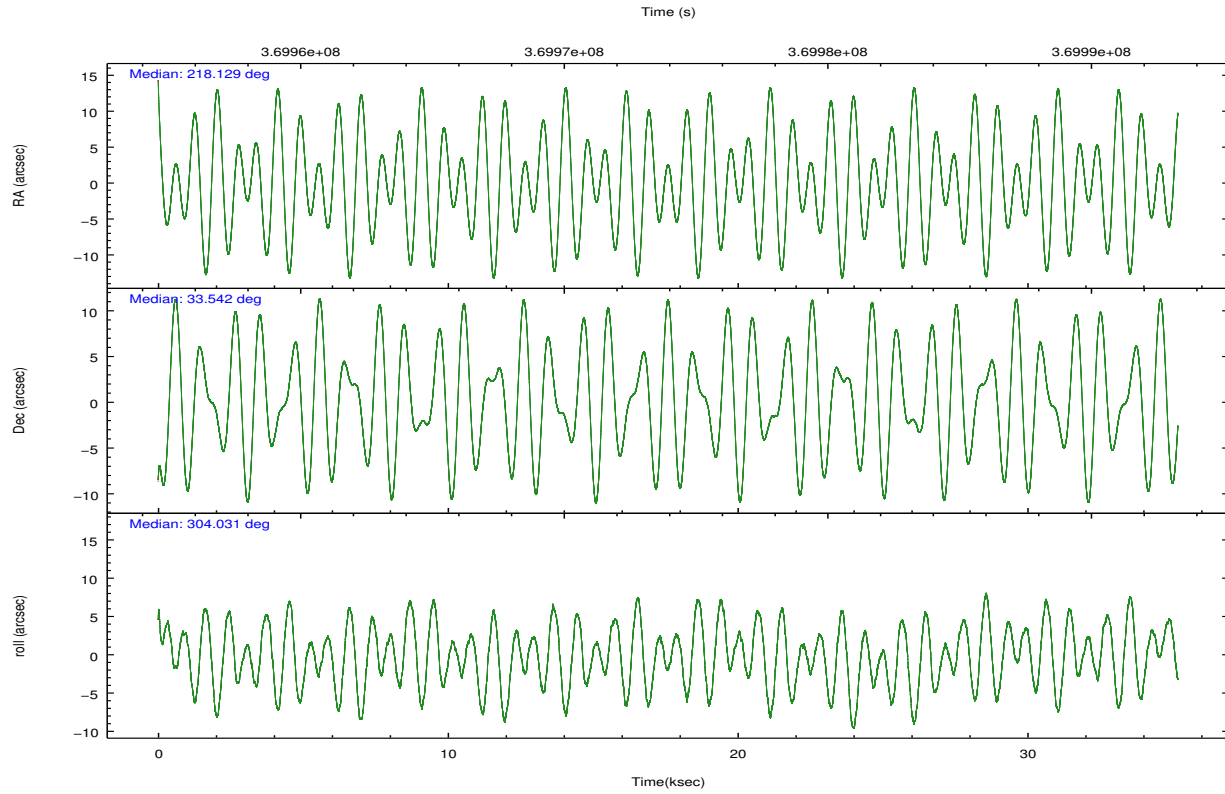
	ccd 0	ccd 1	ccd 2	ccd 3	ccd 6
grade 0 events	10664	21319	10927	10332	10762
	3%	7%	3%	3%	3%
grade 1 events	181	285	160	158	159
	0%	0%	0%	0%	0%
grade 2 events	7804	8194	7340	6596	6901
	2%	2%	2%	2%	2%
grade 3 events	3365	3689	3185	3206	3484
	1%	1%	1%	1%	1%
grade 4 events	3083	3560	3155	3182	3252
	1%	1%	1%	1%	1%
grade 5 events	10891	12155	10414	12702	12146
	3%	4%	3%	4%	4%
grade 6 events	6194	6993	5660	5980	6857
	2%	2%	1%	2%	2%
grade 7 events	244478	240321	272959	250896	256124
	85%	81%	86%	85%	85%

2.2 Compared Parameters

Parameter	Planned	Actual	Parameter	Planned	Actual
Instrument	ACIS	ACIS	Obspar format version number	7	7
Detector	ACIS-01236	ACIS-01236	Obspar file type	PREDICTED	ACTUAL
Grating	NONE	NONE	Obspar update status	NONE	UPDATED
Data mode	VFAINT	VFAINT	CCD I0 on	Y	Y
Observation mode	POINTING	POINTING	CCD I1 on	Y	Y
[deg] Pointing RA	218.099512	218.1292340529641	CCD I2 on	Y	Y
[deg] Pointing Dec	33.553632	33.54168268091245	CCD I3 on	Y	Y
[deg] Pointing Roll	303.845773	304.0380330775088	CCD S0 on	N	N
[mm] SIM focus pos	-0.782348	-0.7809083437167272	CCD S1 on	N	N
[mm] SIM defocus	0	0.001439871863259334	CCD S2 on	O1	Y
[mm] SIM translation stage pos	-233.592463	-233.5874344608287	CCD S3 on	N	N
[mm] SIM translation stage offset	0	-0.005018542100998502	CCD S4 on	N	N
[s] Observation start time (MET)	369956526.184000	369955636.77141	CCD S5 on	N	N
Observation start date	2009-09-21T21:41:00	2009-09-21T21:27:16	Number of optional ACIS chips dropped	0	0
[s] Observation end time (MET)	369991526.184000	369992439.39826	On-chip summing requested	N	N
Observation end date	2009-09-22T07:24:20	2009-09-22T07:40:39	Subarray requested	NONE	NONE
Read mode	TIMED	TIMED	Alternating exposures requested	N	N
			[s] Primary exposure time	0.000000	3.1

2.3 Aspect



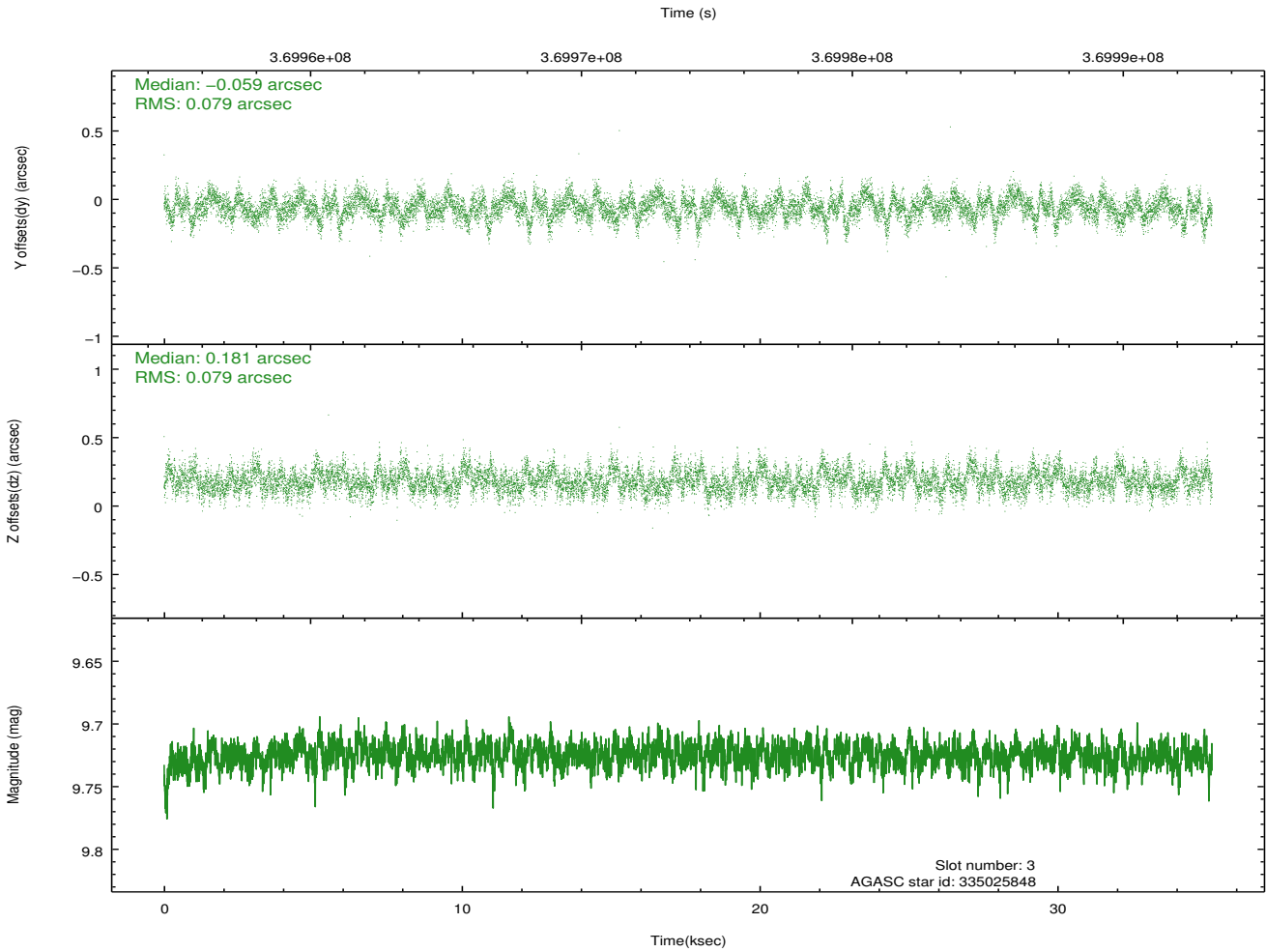
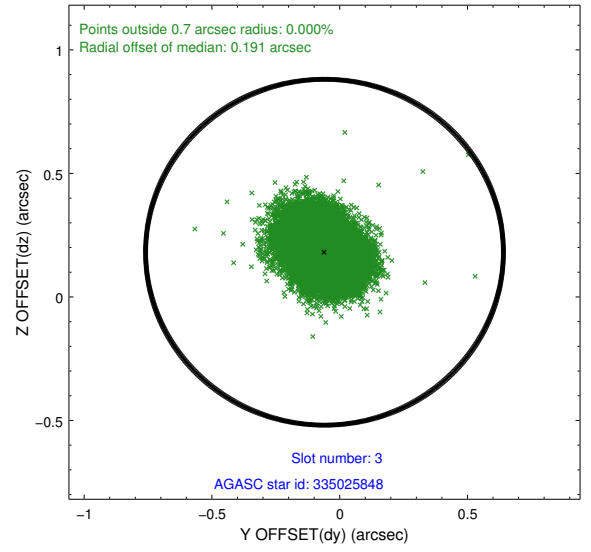
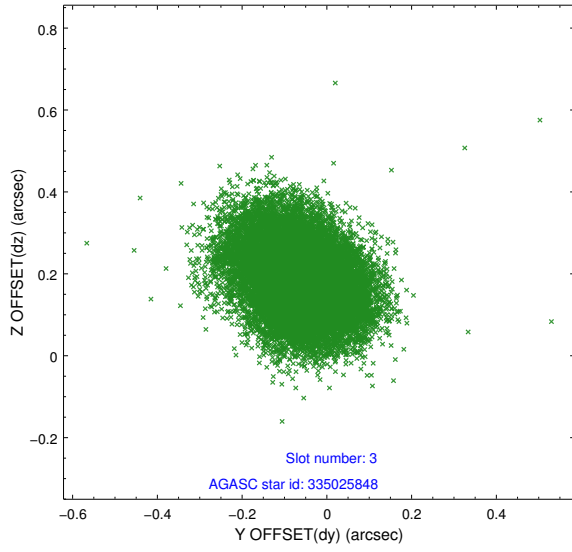


Slot Statistics

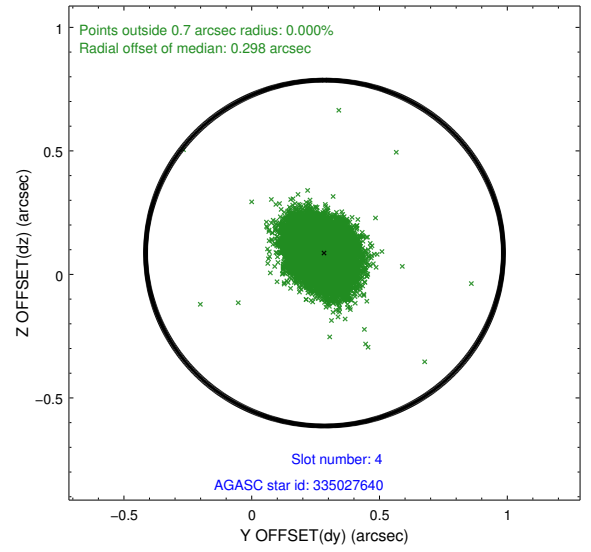
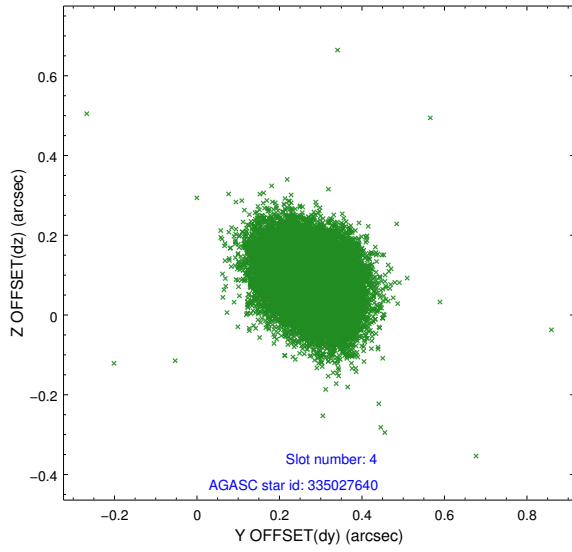
slot	status	id	mag	n_pts	med_dy	med_dz	dr1	dr2	ra	dec	mean_y	mean_z
0	FID	ACIS-I-2	6.91	8582	0.003	-0.036	0.014	0.025	0.000000	0.000000	-768.12	-846.45
1	FID	ACIS-I-5	6.97	8583	-0.159	0.058	0.015	0.023	0.000000	0.000000	-1822.35	1057.49
2	FID	ACIS-I-6	6.97	8583	0.064	0.045	0.017	0.025	0.000000	0.000000	391.67	1701.98
3	GUIDE	335025848	9.72	17143	-0.059	0.181	0.119	0.195	217.530531	33.778292	-1623.50	-960.88
4	GUIDE	335027640	9.09	17150	0.285	0.086	0.096	0.160	218.092211	33.193770	1064.32	-739.49
5	GUIDE	335029384	8.49	17158	0.032	0.082	0.081	0.127	217.848061	33.088477	968.65	-1561.74
6	GUIDE	335028696	9.18	17157	-0.337	-0.289	0.090	0.144	217.260519	33.844112	-2273.96	-1495.96
7	GUIDE	335020984	9.94	17145	0.080	-0.061	0.166	0.270	218.841668	33.815112	446.43	2372.34

2.4 Star Slots

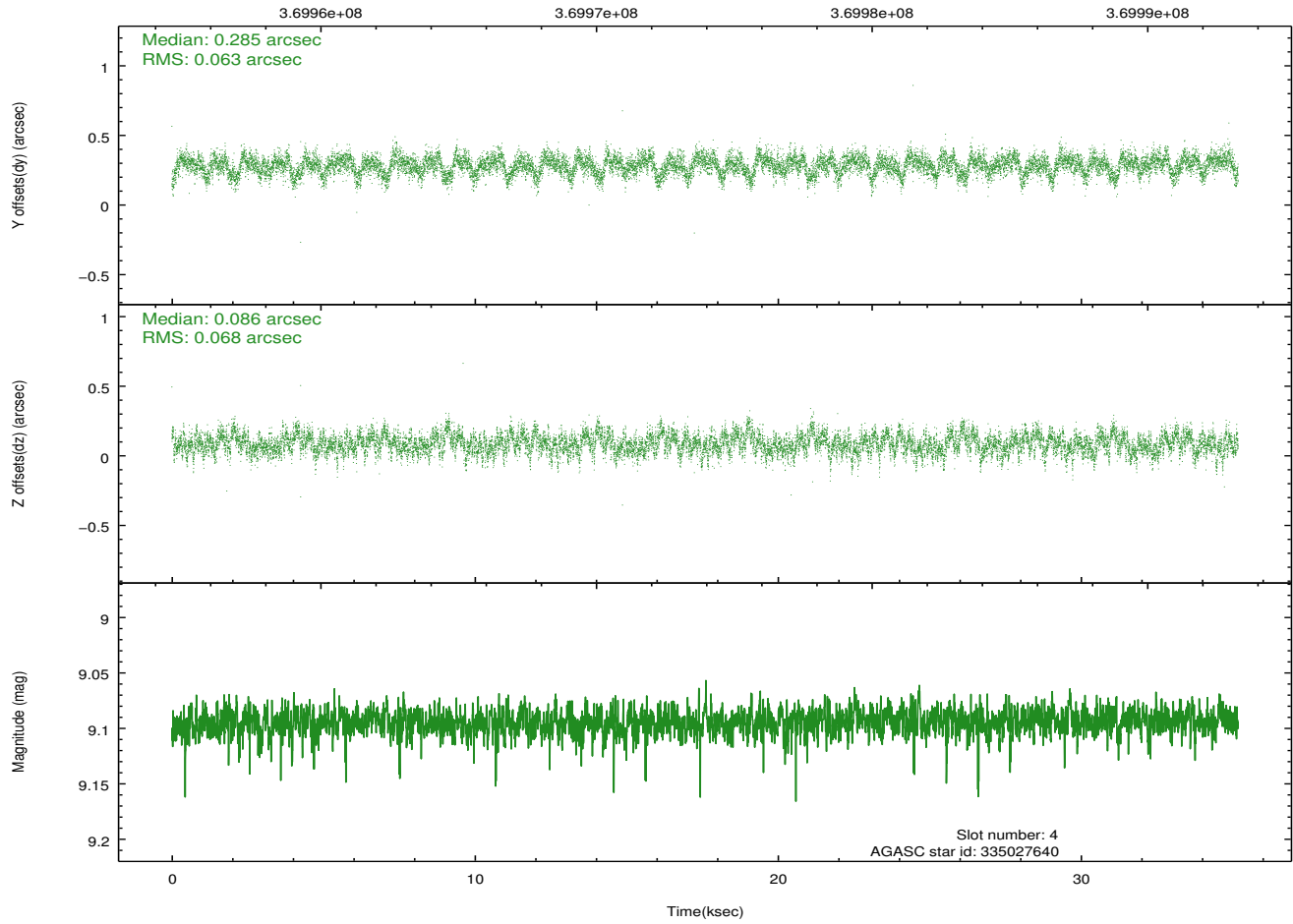
2.4.1 Slot 3



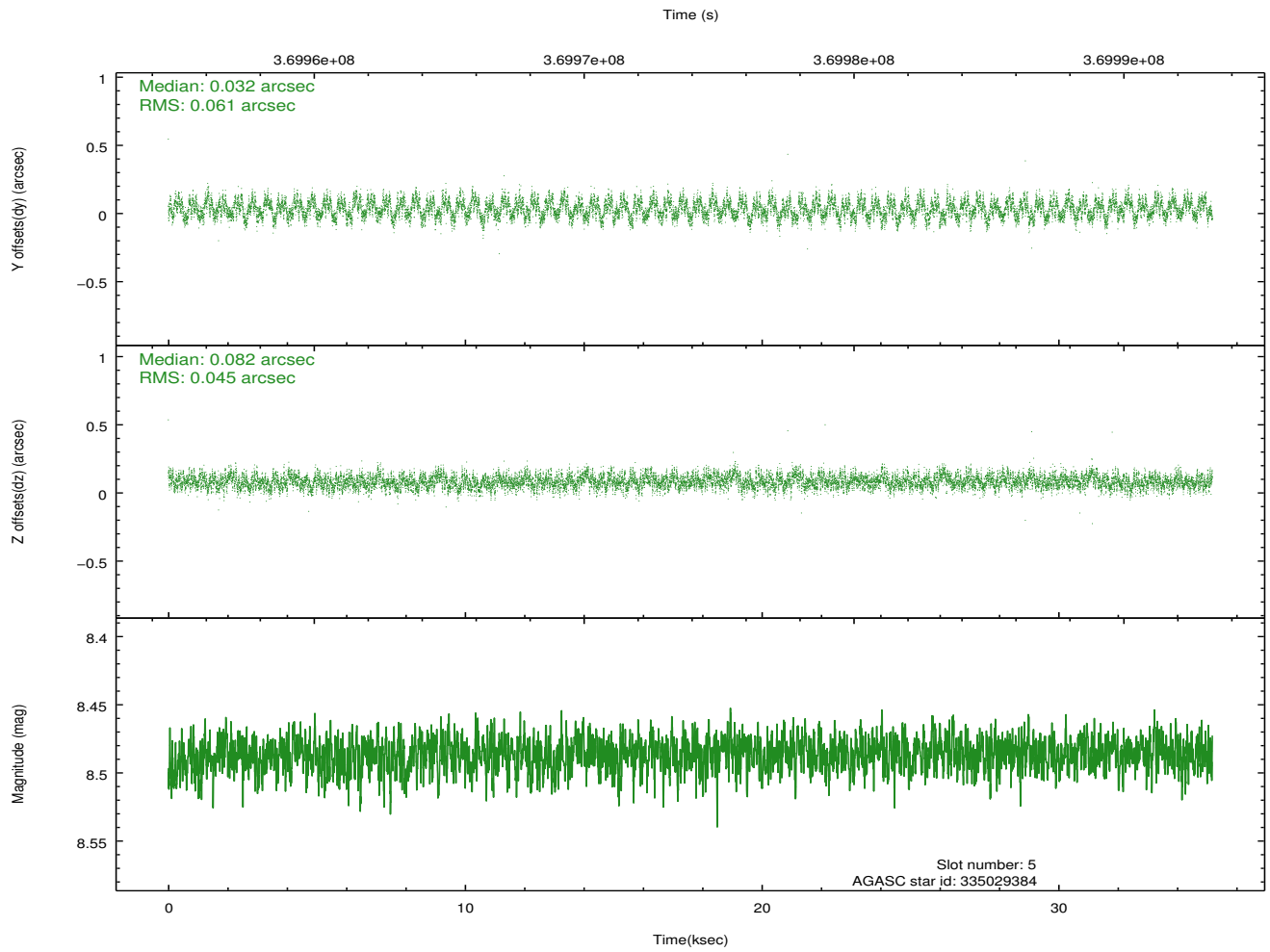
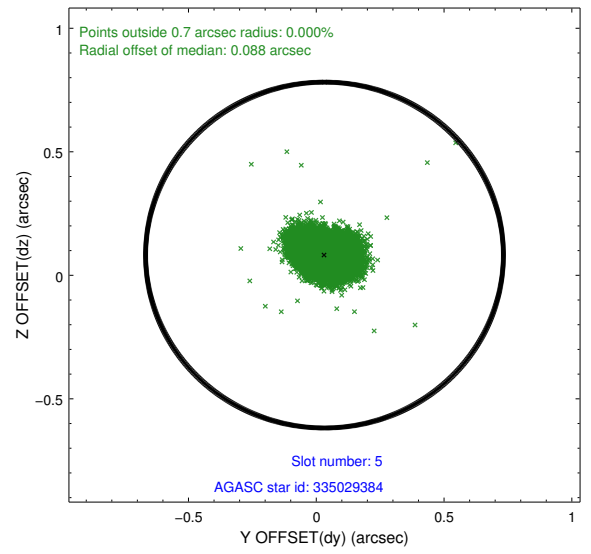
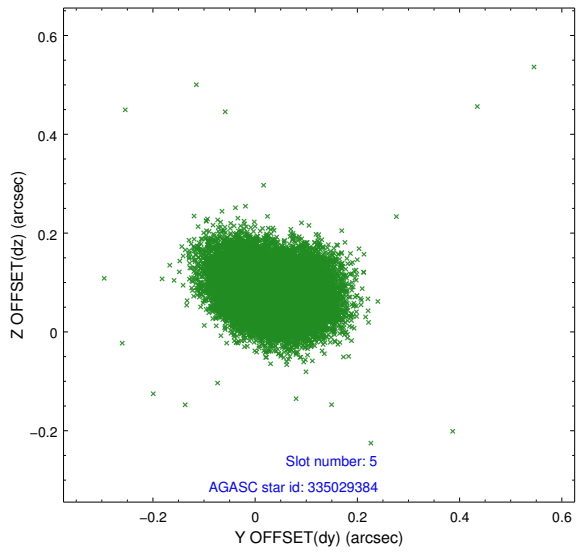
2.4.2 Slot 4



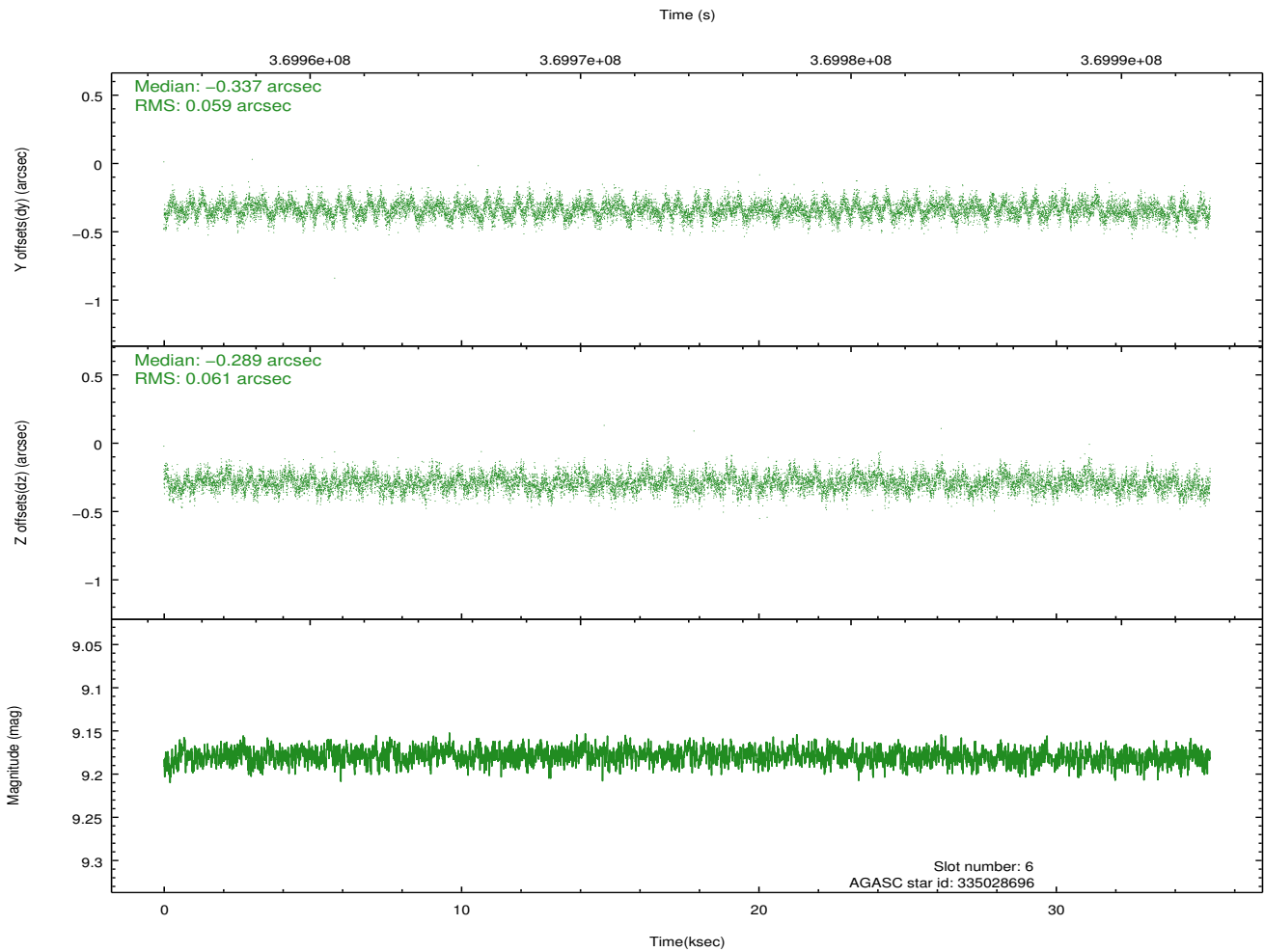
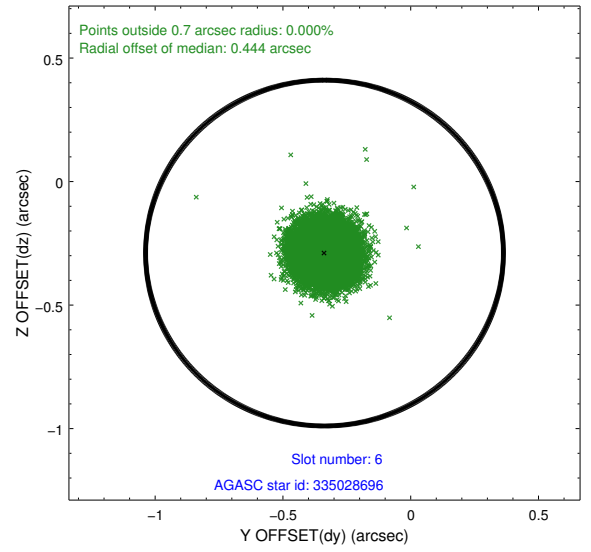
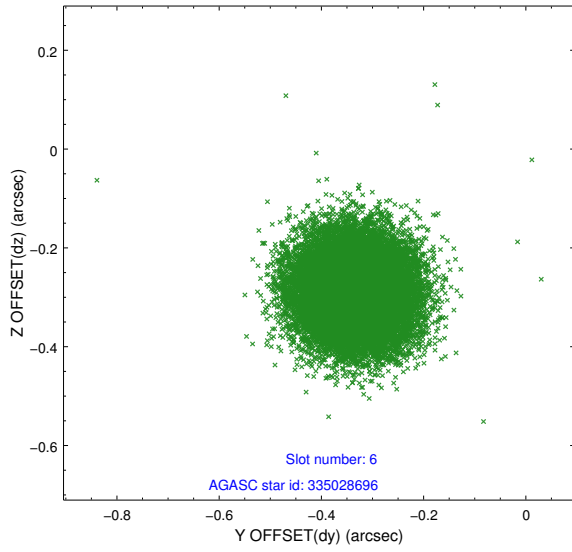
Time (s)



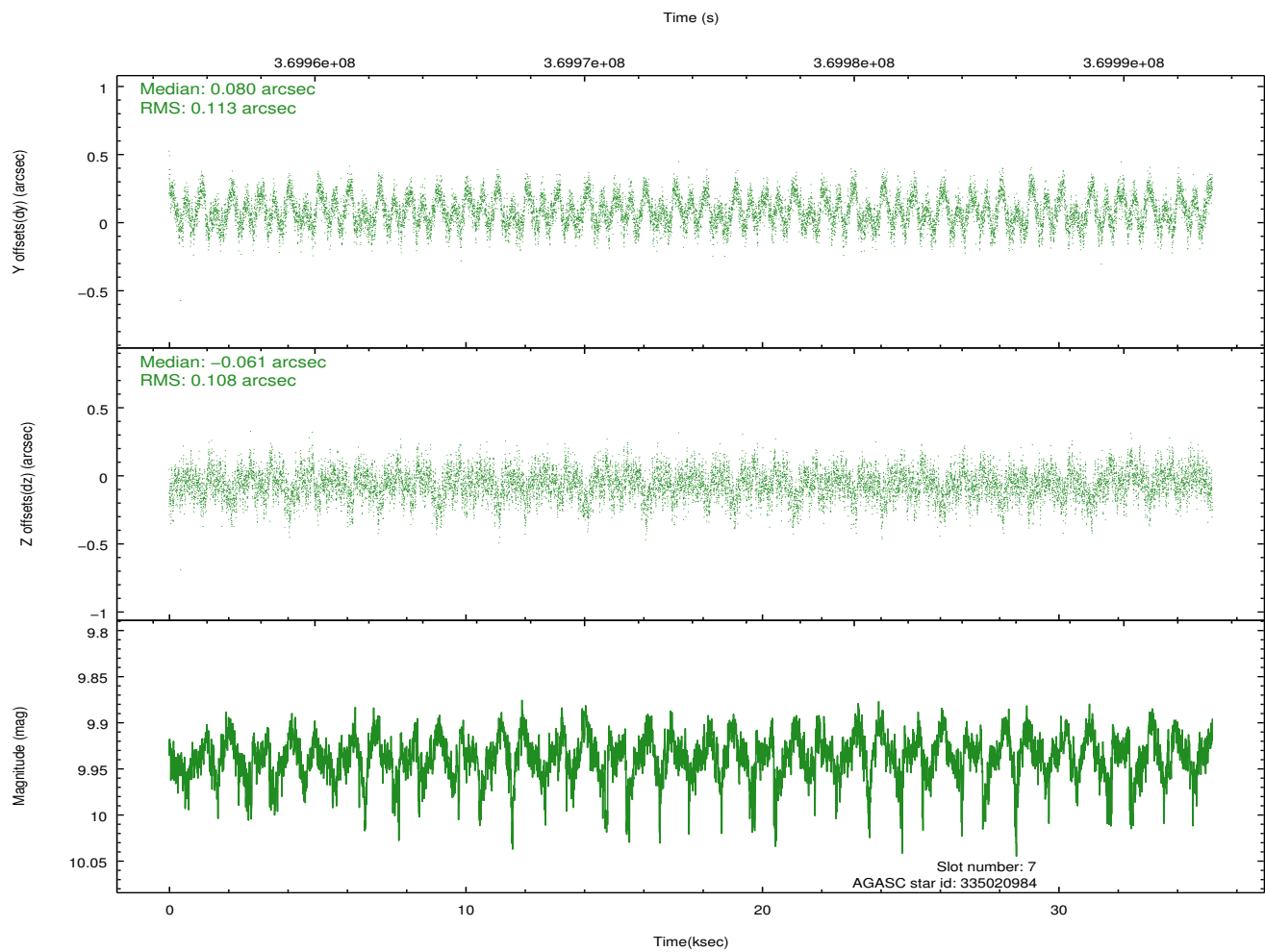
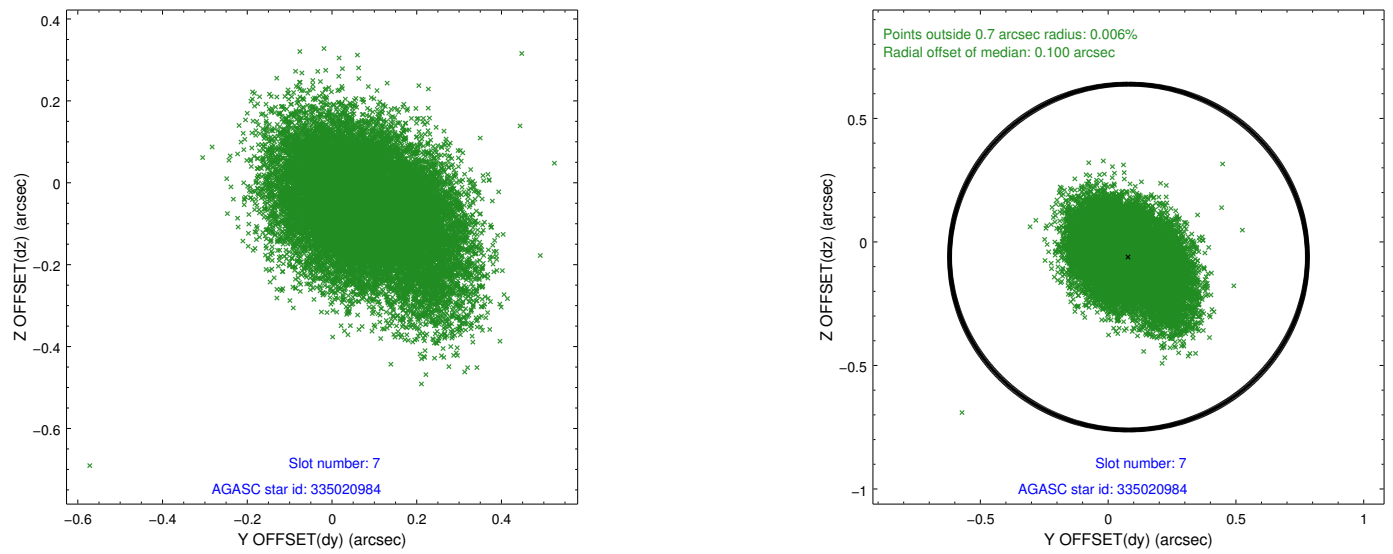
2.4.3 Slot 5



2.4.4 Slot 6

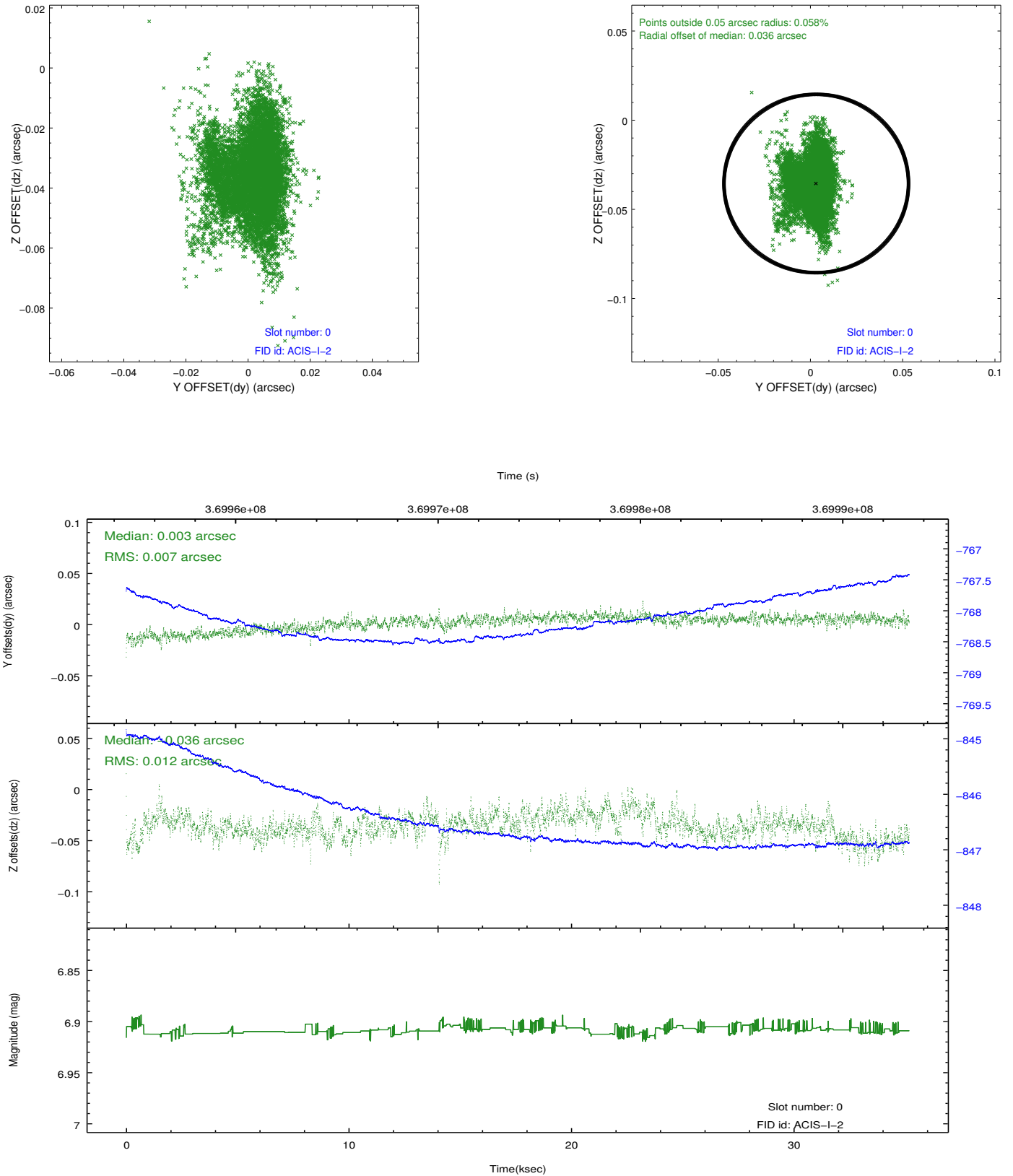


2.4.5 Slot 7

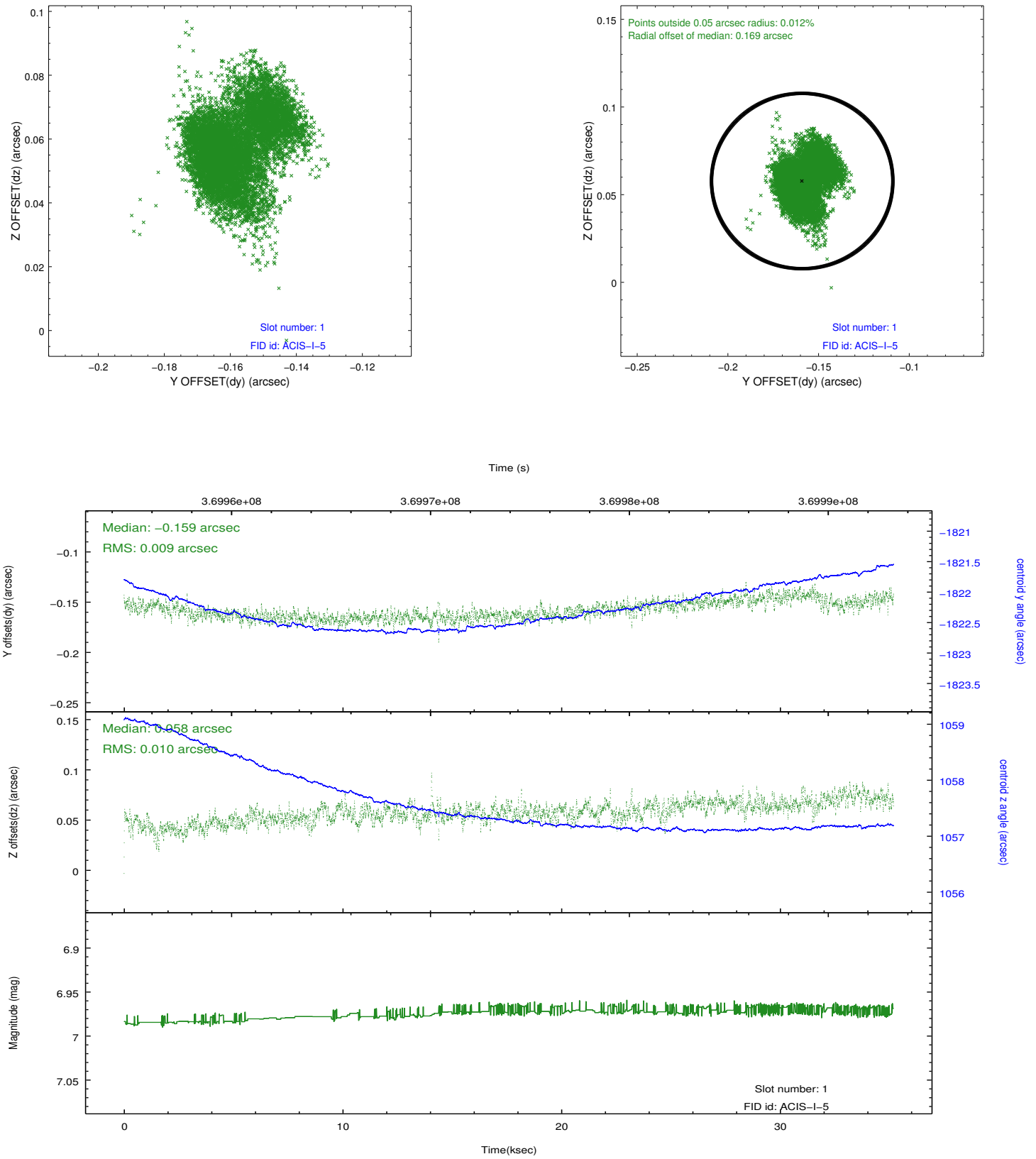


2.5 FID Slots

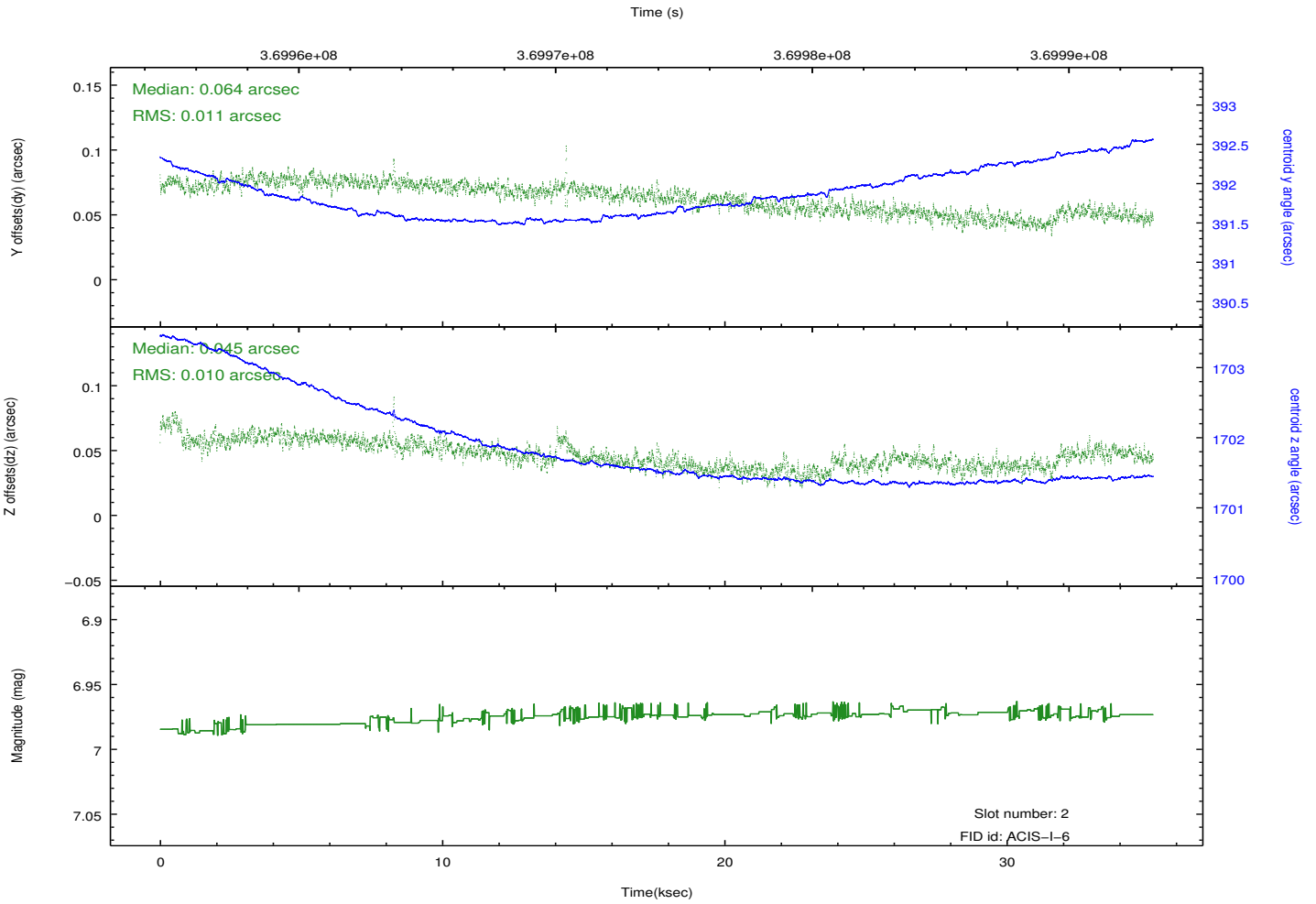
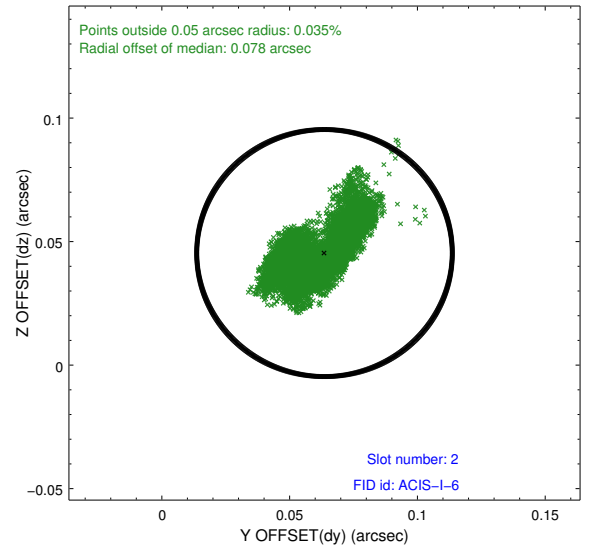
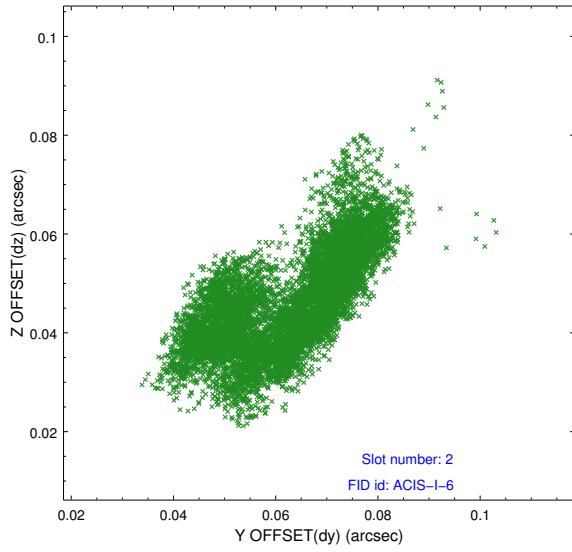
2.5.1 Slot 0



2.5.2 Slot 1



2.5.3 Slot 2



A Summary

A.1 Status

V&V Scientist	Jen Lauer
V&V Date (YYYY-MM-DD)	2012.06.18
V&V Edition	1
V&V Disposition and Status	OK
V&V Charge Time	34.769410589635

A.2 Comments