

V&V Reference Report

L2 ASCDS Version : 8.4.4

Observation 10482 - L2 Version 2
Chandra X-Ray Center

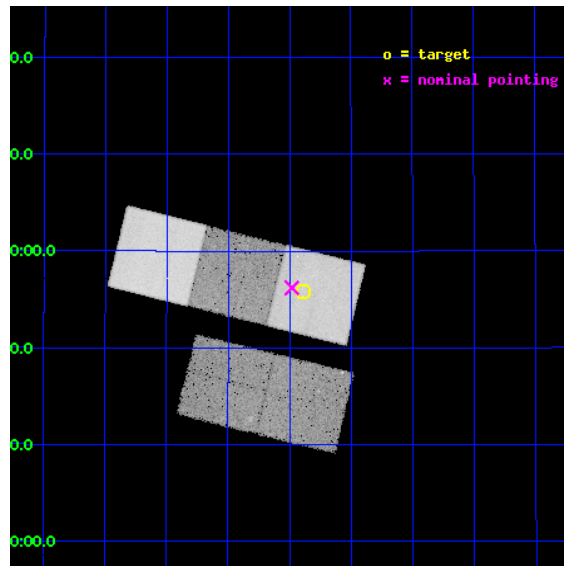
L2 Processing Date : May 25 2012

Contents

1	Front	2
2	OBI	3
2.1	OBI	3
2.1.1	Images	3
2.1.2	Bias	3
2.1.3	Parameters	4
2.1.4	Events	4
2.2	Compared Parameters	5
2.3	Aspect	6
2.4	Star Slots	9
2.4.1	Slot 3	9
2.4.2	Slot 4	10
2.4.3	Slot 5	11
2.4.4	Slot 6	12
2.4.5	Slot 7	13
2.5	FID Slots	14
2.5.1	Slot 0	14
2.5.2	Slot 1	15
2.5.3	Slot 2	16
A	Summary	17
A.1	Status	17
A.2	Comments	17

1 Front

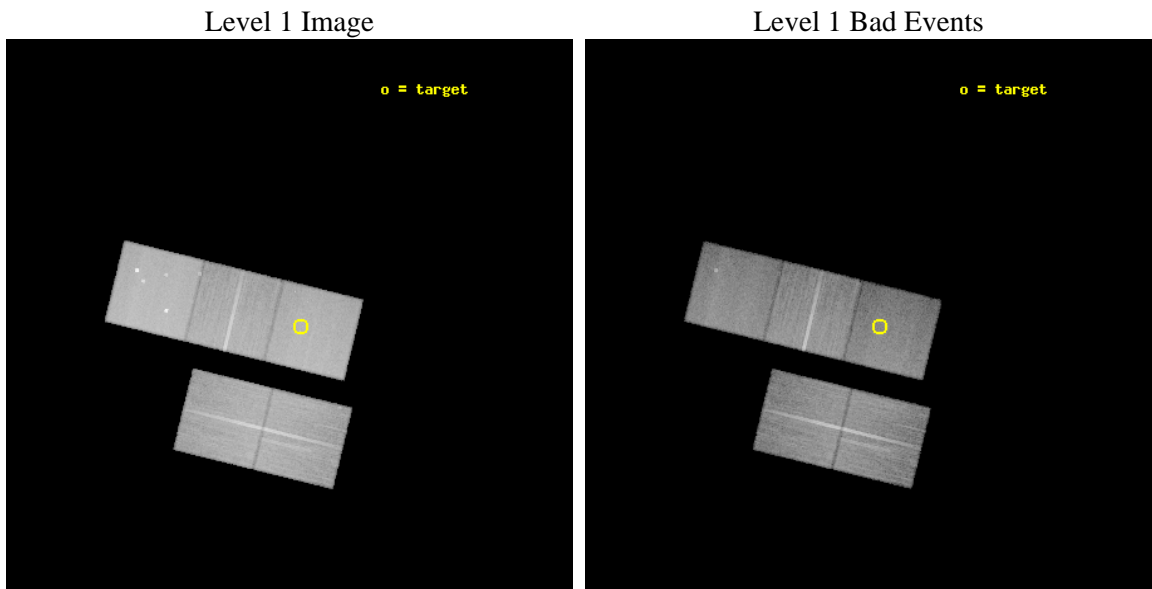
seq_num	800837	Sequence number
obs_id	10482	Observation id
title	Deciphering Cluster Observables: Tracing the Baryons in Clusters of Galaxies	Proposal title
observer	Dr. Amalia Hicks	Principal investigator
object	RCS1615+3055	Source name
dtycycle	0	
cycle	P	events from which exps? Prim/Second/Both
ra_targ	243.9725	Observer's specified target RA [deg]
dec_targ	30.929556	Observer's specified target Dec [deg]
ra_nom	243.99534083454	Nominal RA [deg]
dec_nom	30.936923644114	Nominal Dec [deg]
roll_nom	13.765355081147	Nominal Roll [deg]
revision	2	Processing version of data
ontime	28144.90021646	Sum of GTIs [s]
livetime	27777.166375158	Livetime [s]
ontime2	28138.618315756	Sum of GTIs [s]
ontime3	28144.90021646	Sum of GTIs [s]
ontime5	28144.90021646	Sum of GTIs [s]
ontime6	28144.90021646	Sum of GTIs [s]
ontime7	28144.90021646	Sum of GTIs [s]
l2events	330107	Number of level 2 events



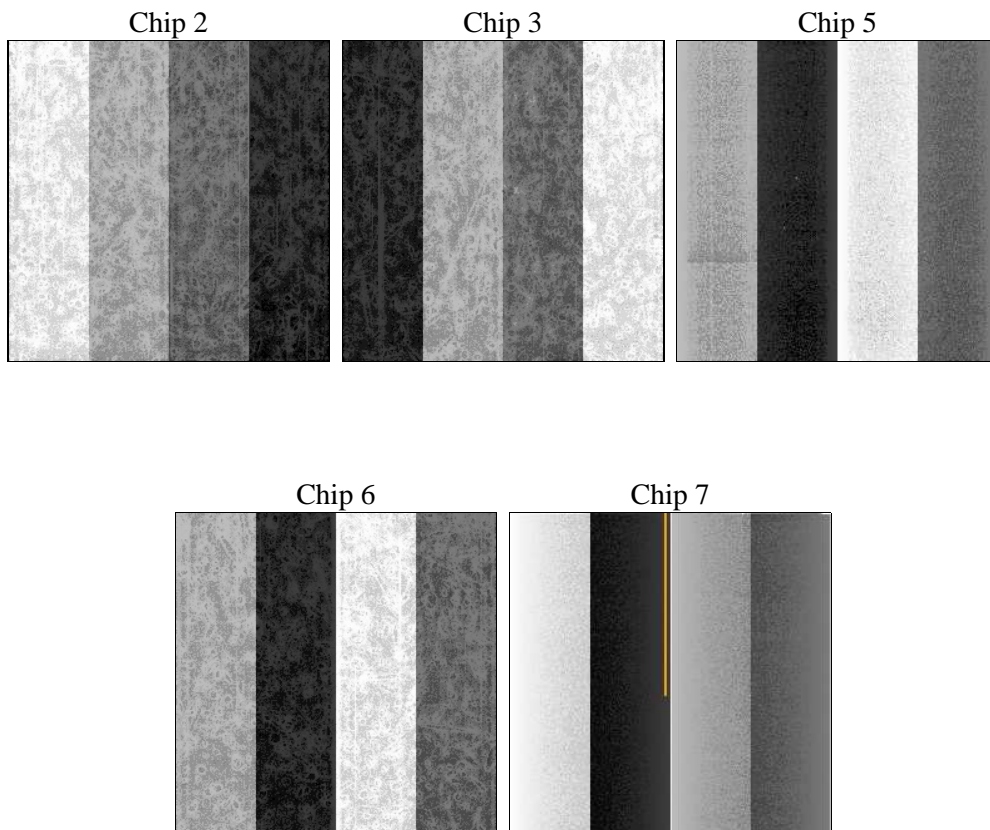
2 OBI

2.1 OBI

2.1.1 Images



2.1.2 Bias



2.1.3 Parameters

obi_num	0	Obi number	sched_exp_time	28000.000000	[s] Scheduled observation exposure time
ascdsver	8.4.4	Processing system revision	ontime	28144.90021646	Sum of GTIs [s]
caldbver	4.4.9	 	ontime2	28138.618315756	Sum of GTIs [s]
date	2012-05-25T21:05:36	Date and time of file creation	ontime3	28144.90021646	Sum of GTIs [s]
revision	2	Processing version of data	ontime5	28144.90021646	Sum of GTIs [s]
			ontime6	28144.90021646	Sum of GTIs [s]
			ontime7	28144.90021646	Sum of GTIs [s]
			l1events	1329780	Number of level 1 events

2.1.4 Events

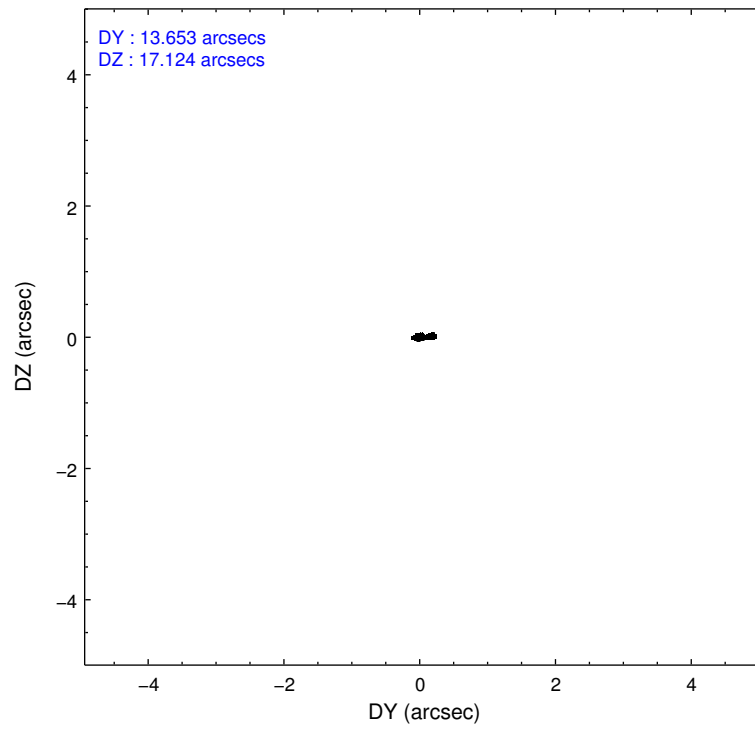
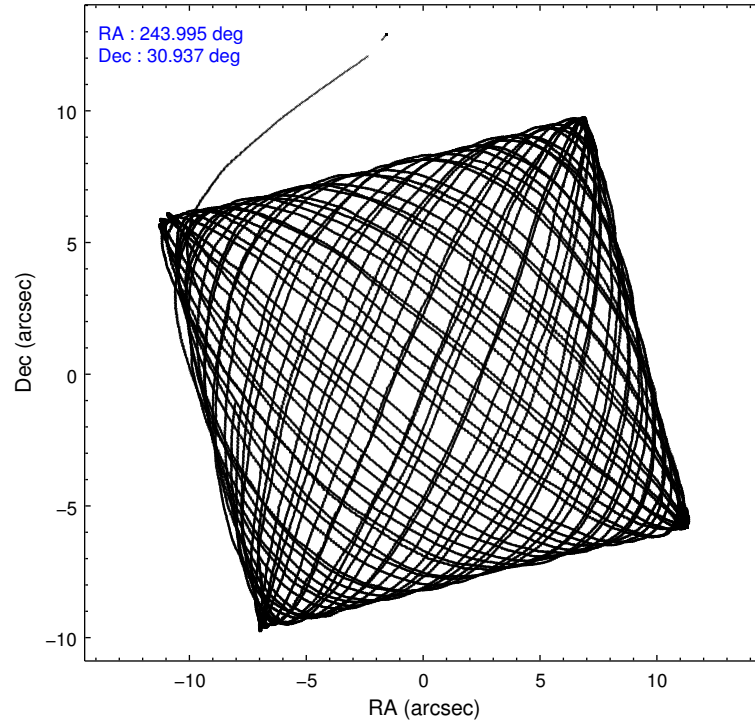
	ccd 2	ccd 3	ccd 5	ccd 6	ccd 7
level 1 events	235565	232520	344157	242127	275411
rejected events	212693	210736	176316	217883	154124
rejected %	90%	90%	51%	89%	55%

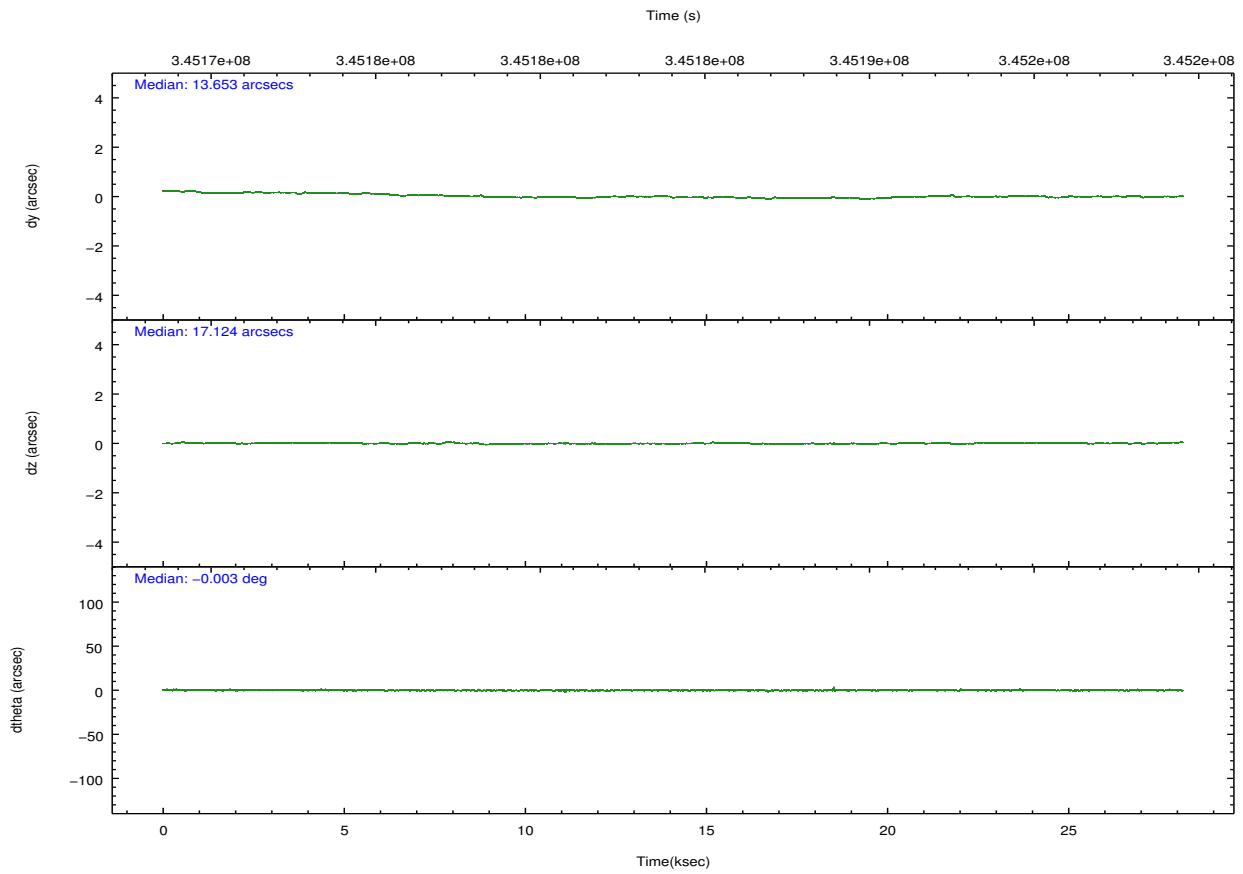
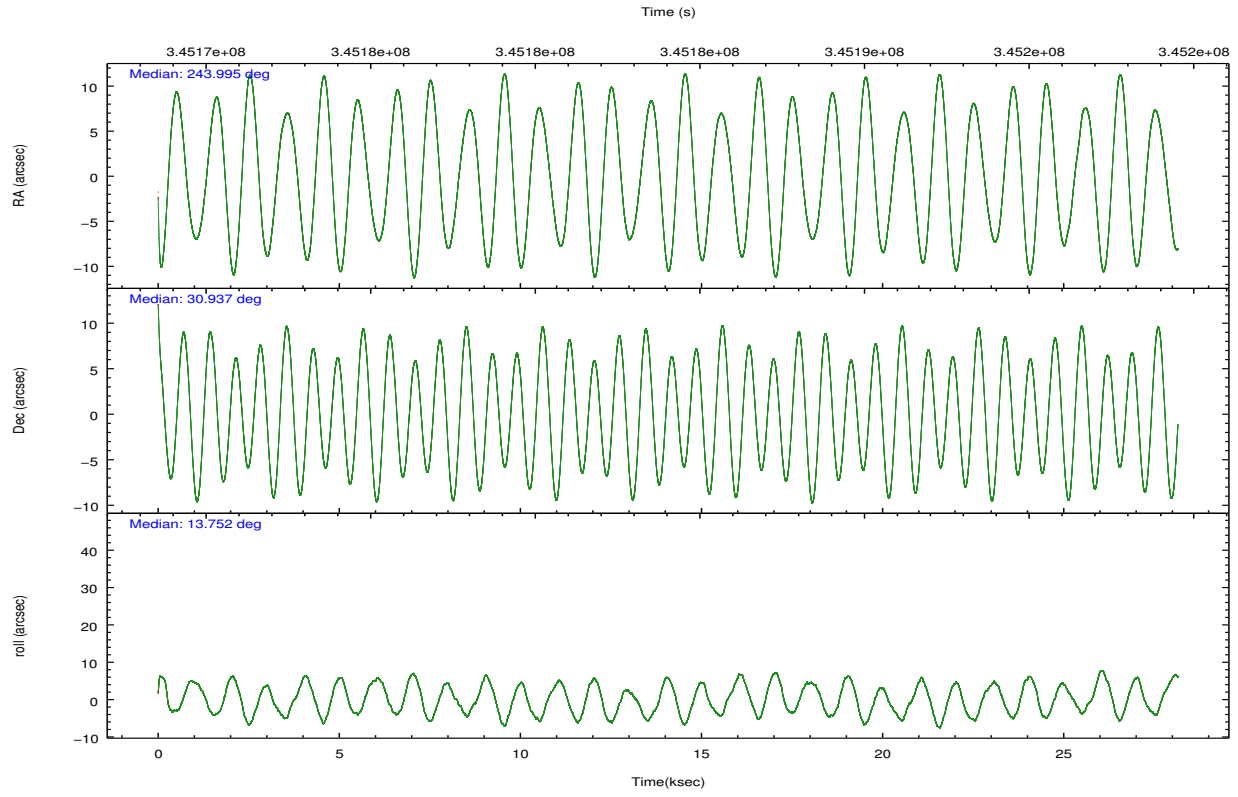
	ccd 2	ccd 3	ccd 5	ccd 6	ccd 7
grade 0 events	8425	7772	20821	8579	11701
	3%	3%	6%	3%	4%
grade 1 events	121	118	1301	121	354
	0%	0%	0%	0%	0%
grade 2 events	5747	4971	50767	5629	25566
	2%	2%	14%	2%	9%
grade 3 events	2445	2637	6964	2680	11369
	1%	1%	2%	1%	4%
grade 4 events	2590	2456	6729	2717	11082
	1%	1%	1%	1%	4%
grade 5 events	7801	9619	26727	9899	28725
	3%	4%	7%	4%	10%
grade 6 events	4370	4635	87845	5411	65288
	1%	1%	25%	2%	23%
grade 7 events	204066	200312	143003	207091	121326
	86%	86%	41%	85%	44%

2.2 Compared Parameters

Parameter	Planned	Actual	Parameter	Planned	Actual
Instrument	ACIS	ACIS	Obspar format version number	7	7
Detector	ACIS-23567	ACIS-23567	Obspar file type	PREDICTED	ACTUAL
Grating	NONE	NONE	Obspar update status	NONE	UPDATED
Data mode	VFAINT	VFAINT	CCD I0 on	N	N
Observation mode	POINTING	POINTING	CCD I1 on	N	N
[deg] Pointing RA	243.972634	243.9953408345395	CCD I2 on	O1	Y
[deg] Pointing Dec	30.917752	30.93692364411393	CCD I3 on	O2	Y
[deg] Pointing Roll	13.620399	13.76535508114673	CCD S0 on	N	N
[mm] SIM focus pos	-0.684267	-0.6828225247311905	CCD S1 on	O4	Y
[mm] SIM defocus	0	0.001444936568705701	CCD S2 on	O3	Y
[mm] SIM translation stage pos	-190.132523	-190.1400660498719	CCD S3 on	Y	Y
[mm] SIM translation stage offset	0	0.00754346686406393	CCD S4 on	N	N
[s] Observation start time (MET)	345170105.184000	345168545.36194	CCD S5 on	N	N
Observation start date	2008-12-09T00:34:00	2008-12-09T00:09:05	Number of optional ACIS chips dropped	0	0
[s] Observation end time (MET)	345198105.184000	345199010.92595	On-chip summing requested	N	N
Observation end date	2008-12-09T08:20:40	2008-12-09T08:36:50	Subarray requested	NONE	NONE
Read mode	TIMED	TIMED	Alternating exposures requested	N	N
			[s] Primary exposure time	0.000000	3.1

2.3 Aspect



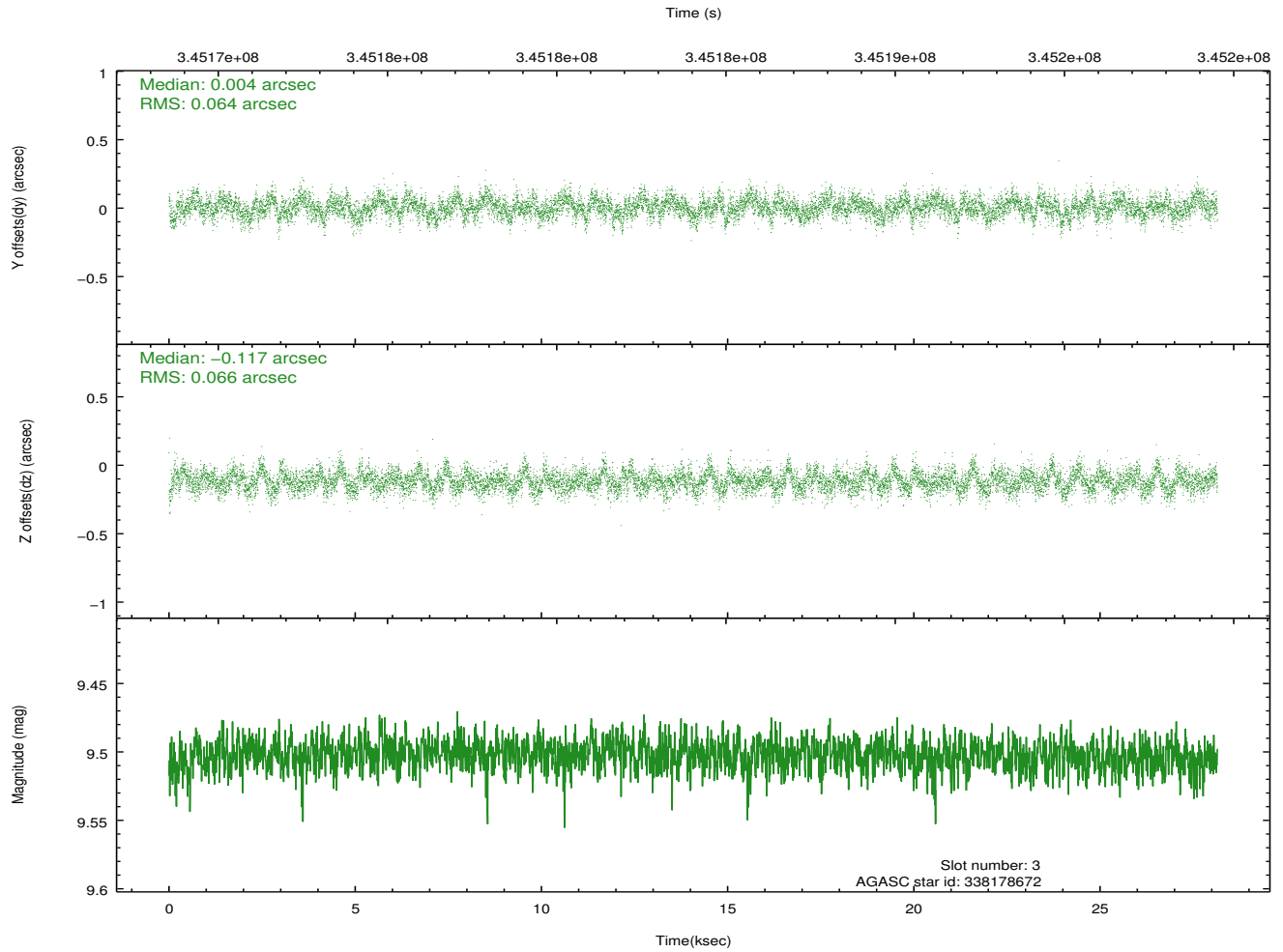
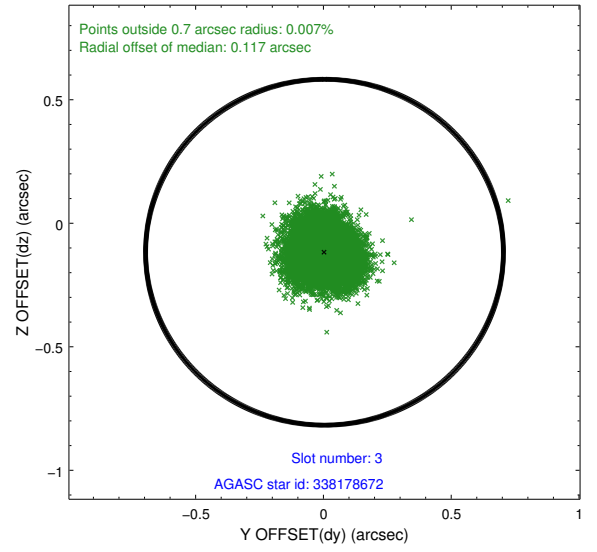
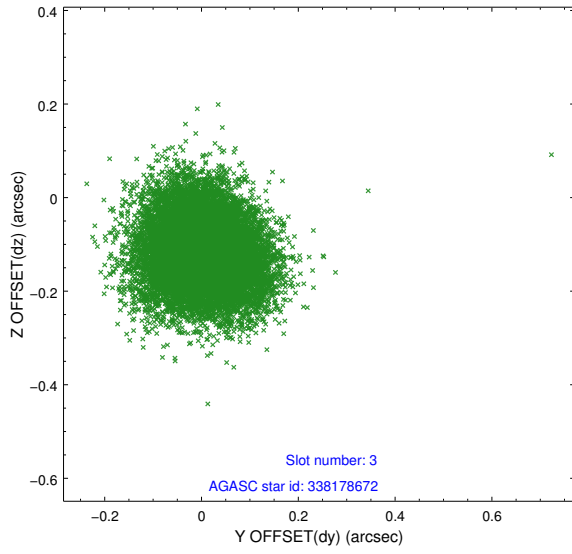


Slot Statistics

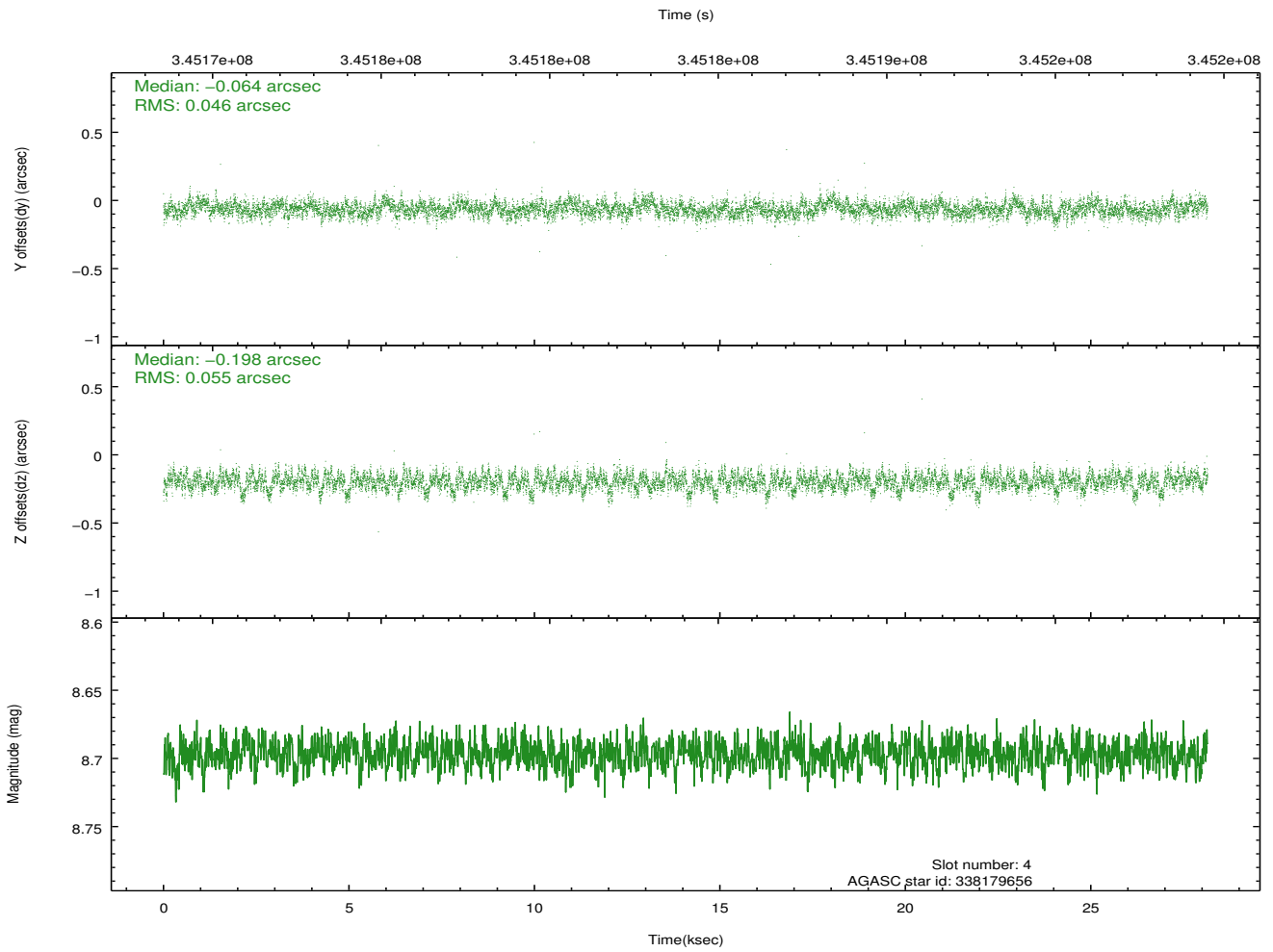
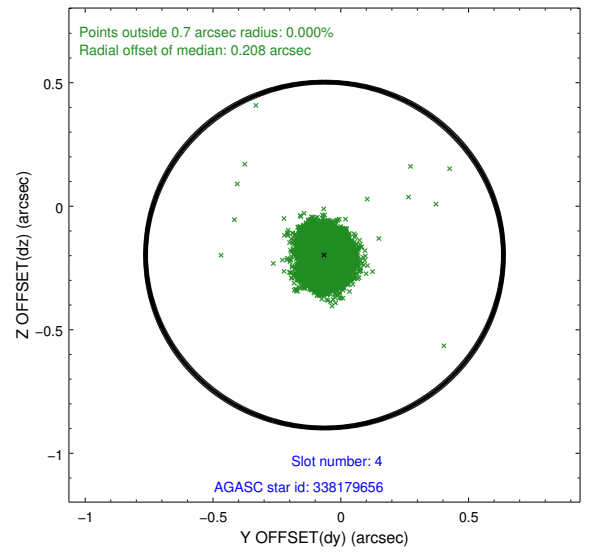
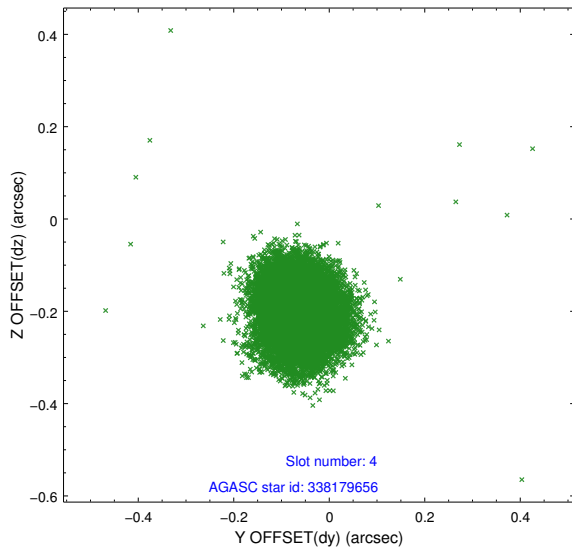
slot	status	id	mag	n_pts	med_dy	med_dz	dr1	dr2	ra	dec	mean_y	mean_z
0	FID	ACIS-S-2	6.88	6867	-0.021	-0.023	0.008	0.013	0.000000	0.000000	-766.66	-1738.57
1	FID	ACIS-S-4	6.96	6866	0.160	0.016	0.007	0.013	0.000000	0.000000	2146.79	169.81
2	FID	ACIS-S-5	7.00	6865	-0.170	0.015	0.006	0.010	0.000000	0.000000	-1819.51	163.64
3	GUIDE	338178672	9.50	13715	0.004	-0.117	0.098	0.159	243.995463	30.539351	-251.48	-1340.33
4	GUIDE	338179656	8.70	13729	-0.064	-0.198	0.076	0.122	243.346722	31.229324	-1607.36	1549.00
5	GUIDE	338182584	9.83	13706	0.100	0.173	0.154	0.246	243.560525	30.238157	-1820.60	-2073.28
6	GUIDE	338184744	9.12	13722	-0.010	0.099	0.083	0.138	243.359501	30.458792	-2236.64	-1152.77
7	GUIDE	338182552	10.02	13519	-0.031	0.051	0.180	0.290	243.904635	30.200494	-813.11	-2459.28

2.4 Star Slots

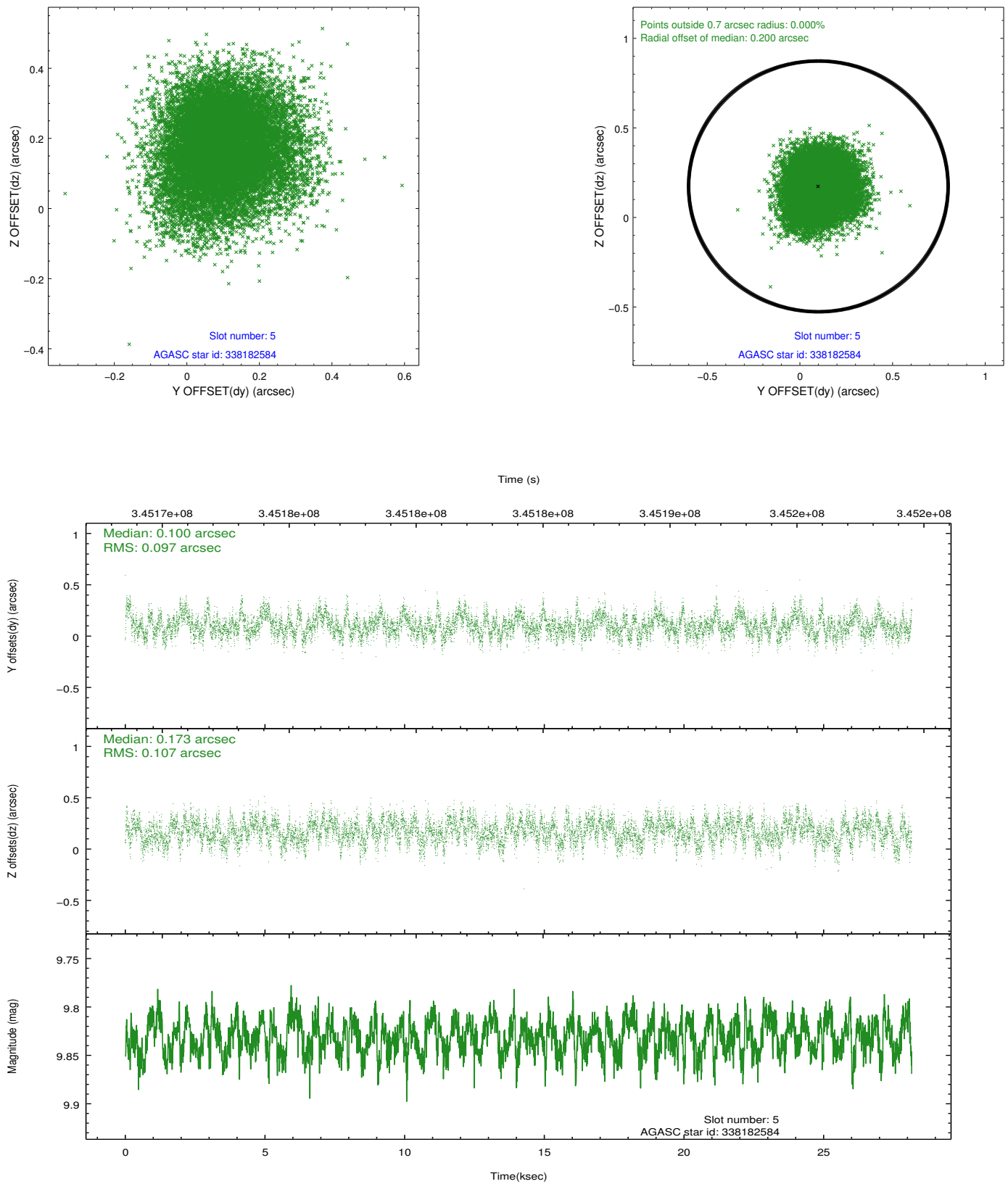
2.4.1 Slot 3



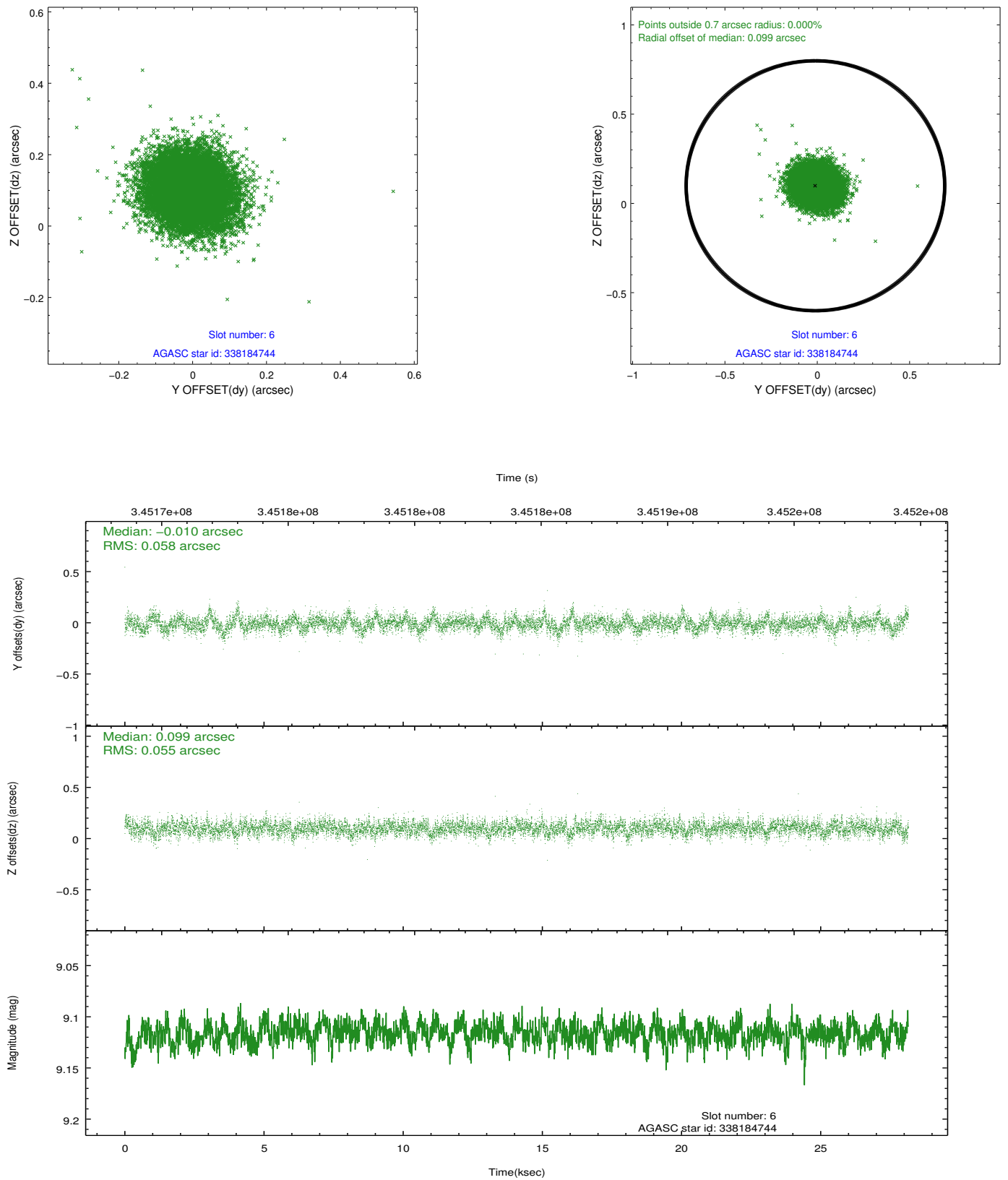
2.4.2 Slot 4



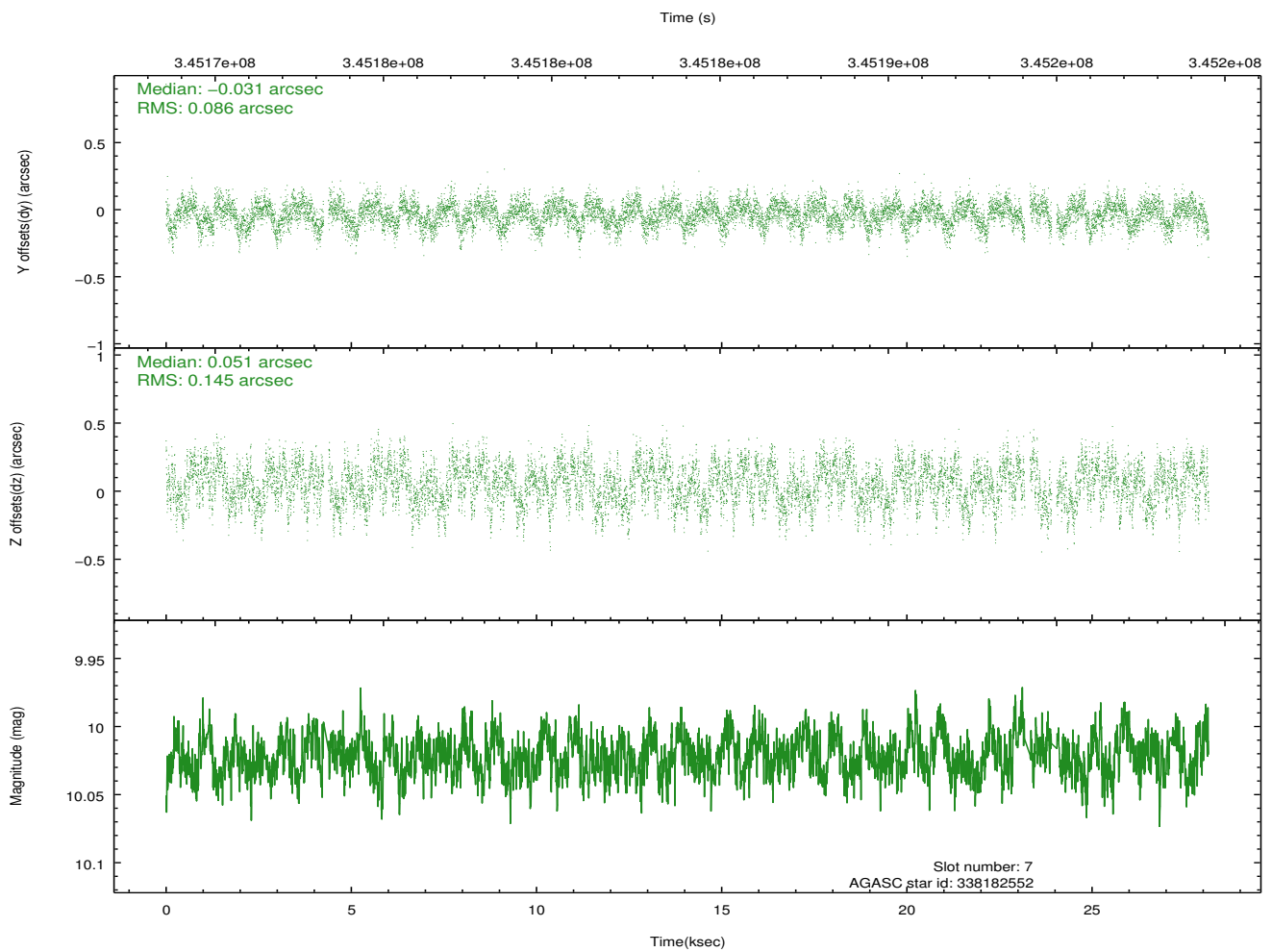
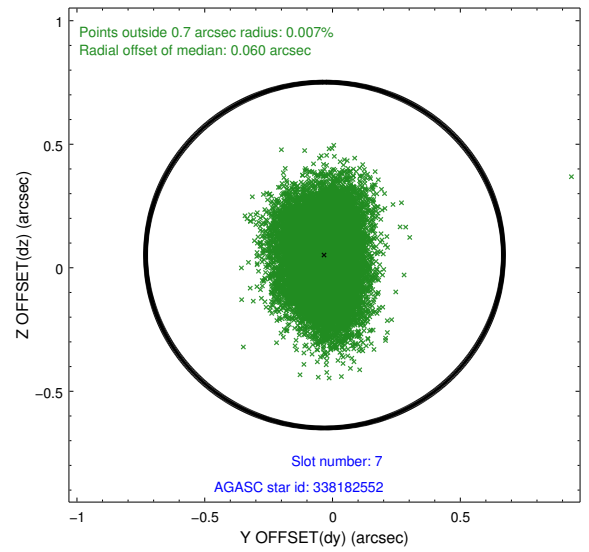
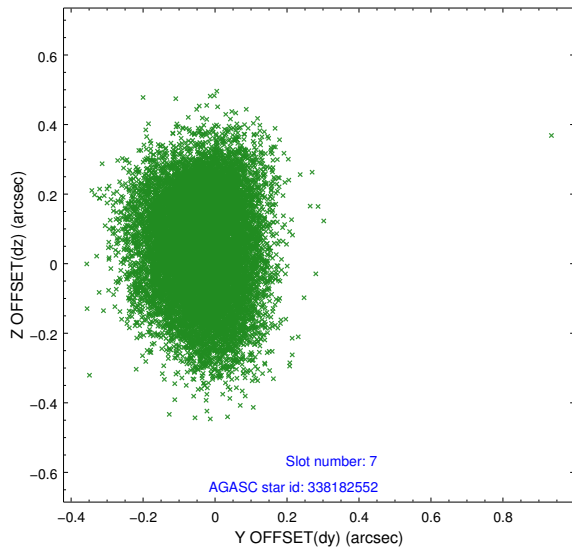
2.4.3 Slot 5



2.4.4 Slot 6

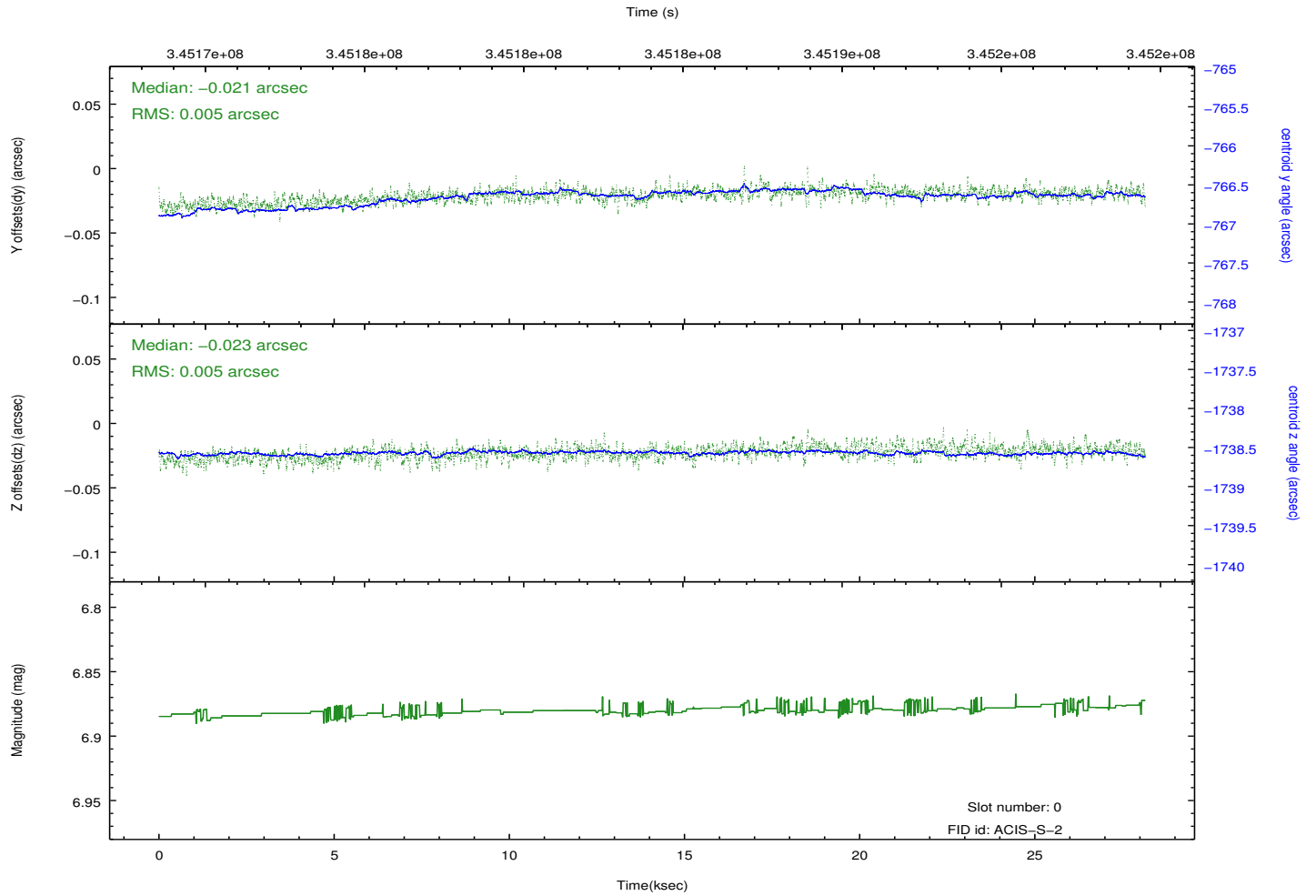
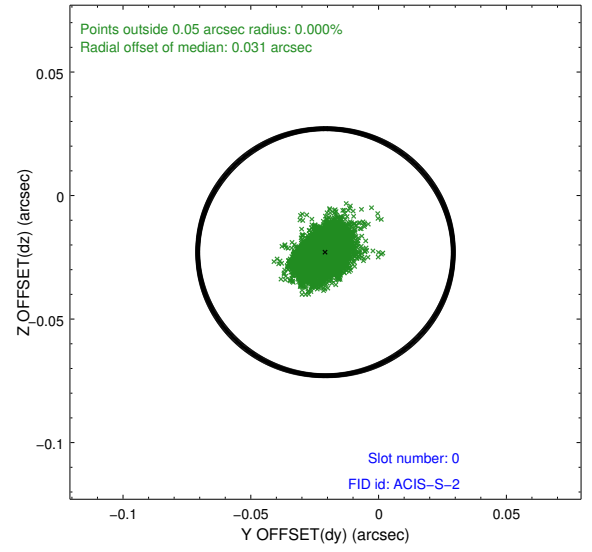
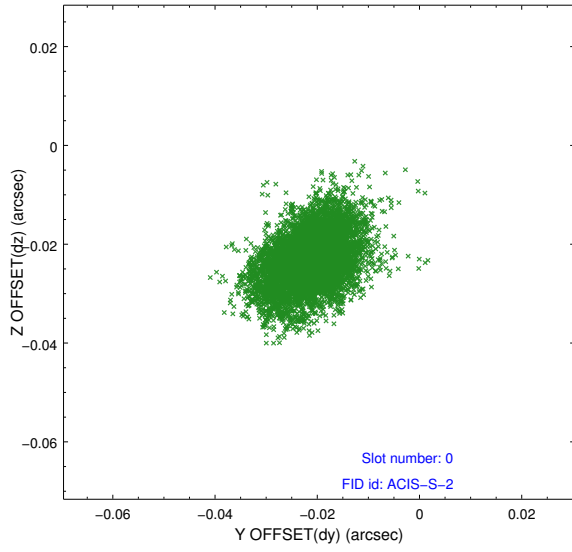


2.4.5 Slot 7

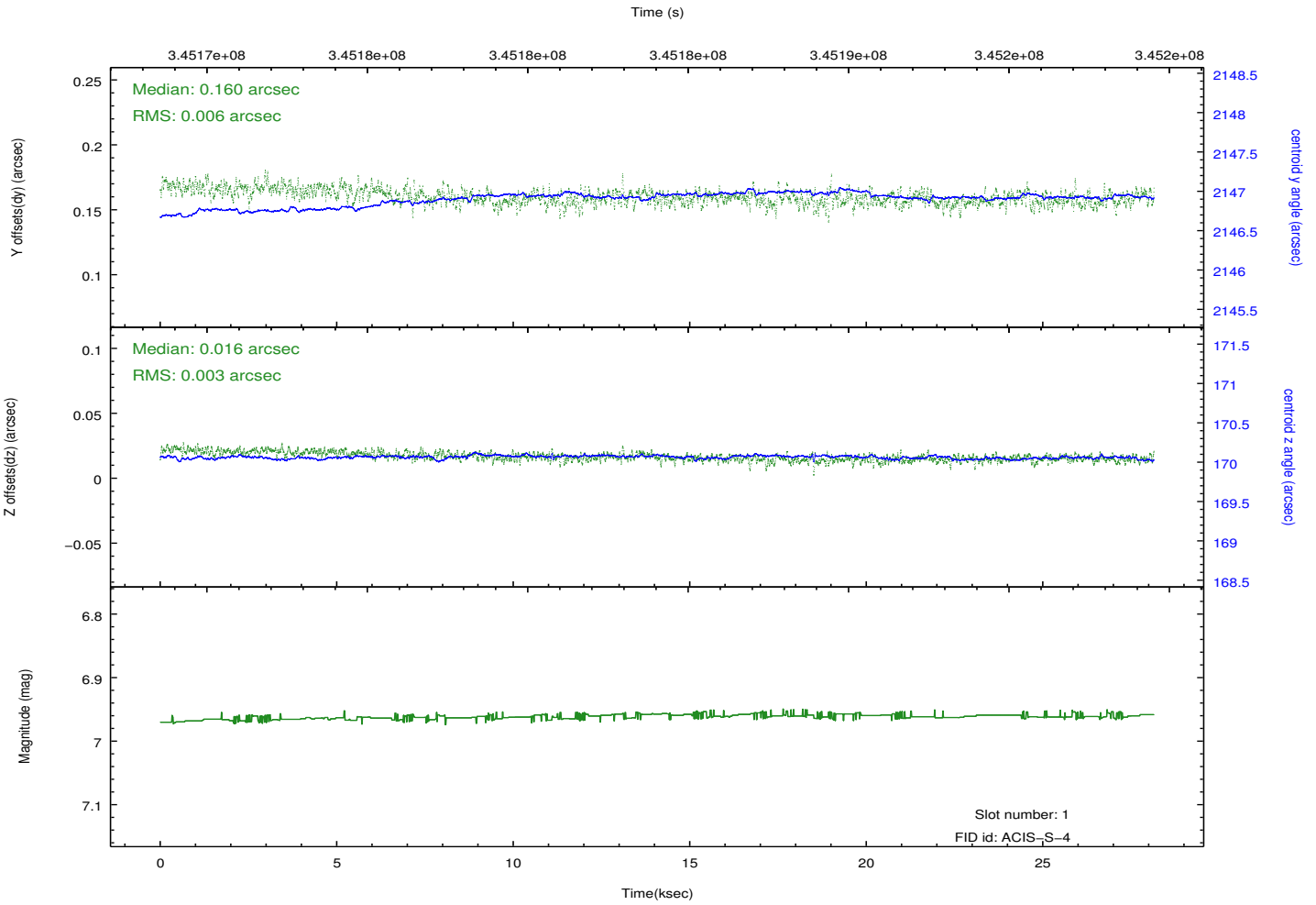
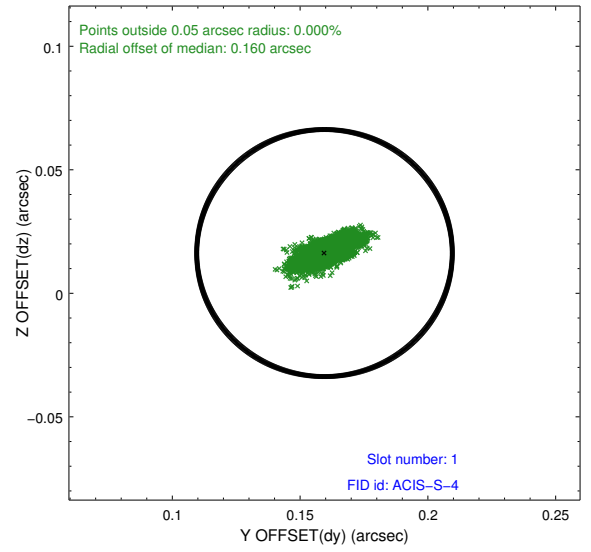
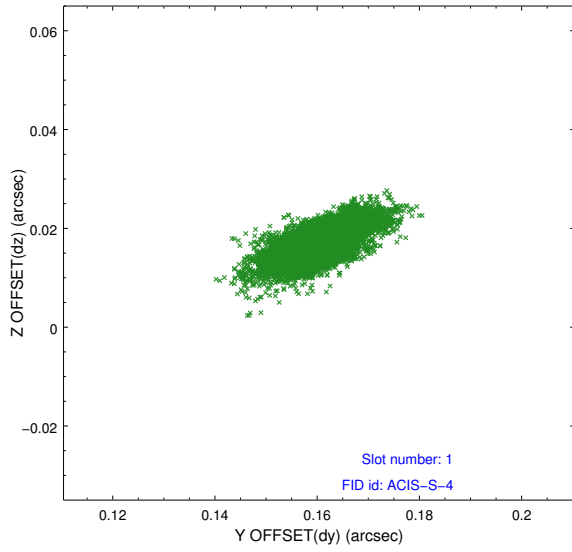


2.5 FID Slots

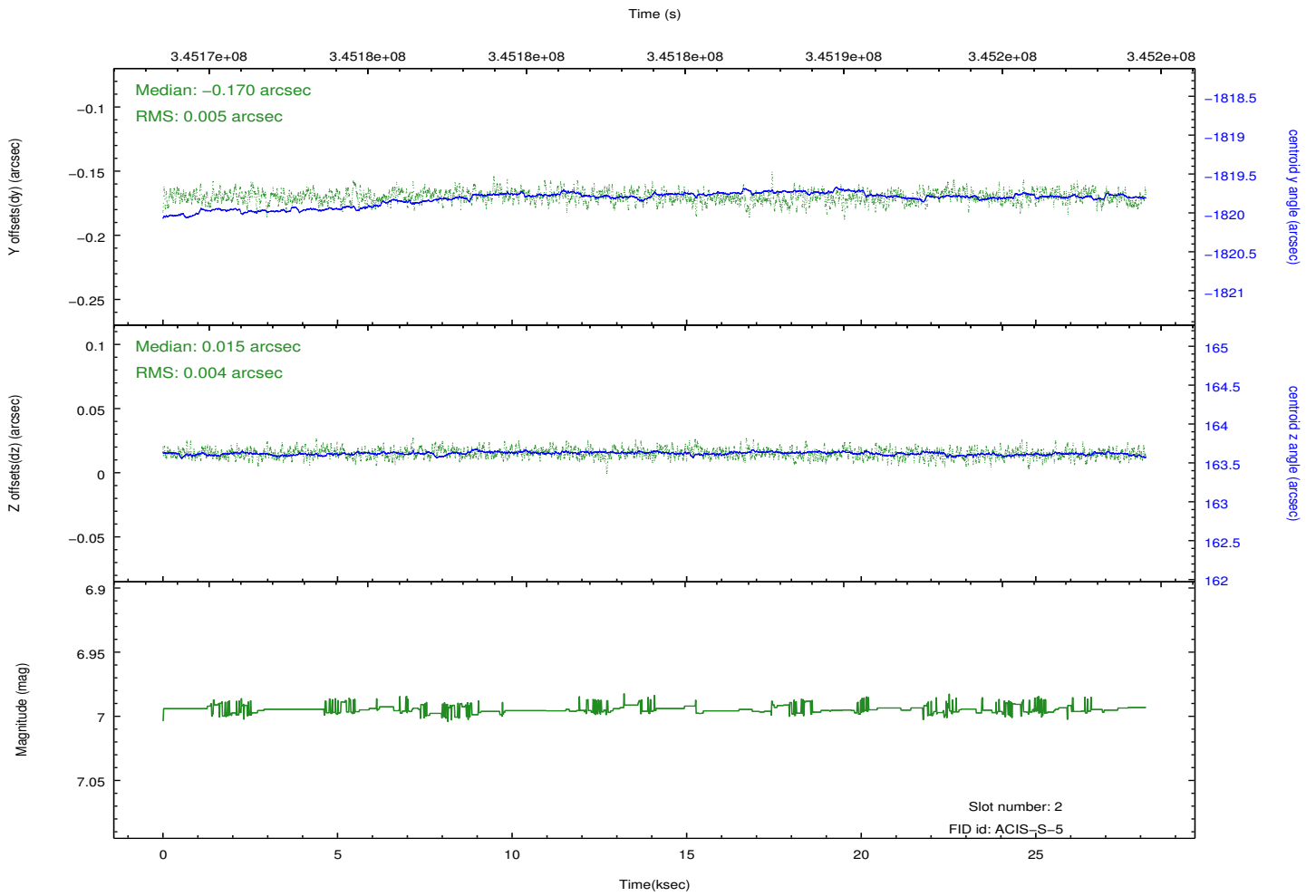
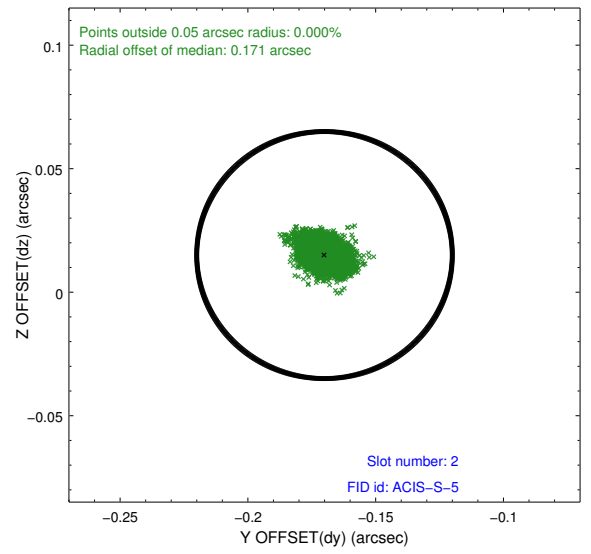
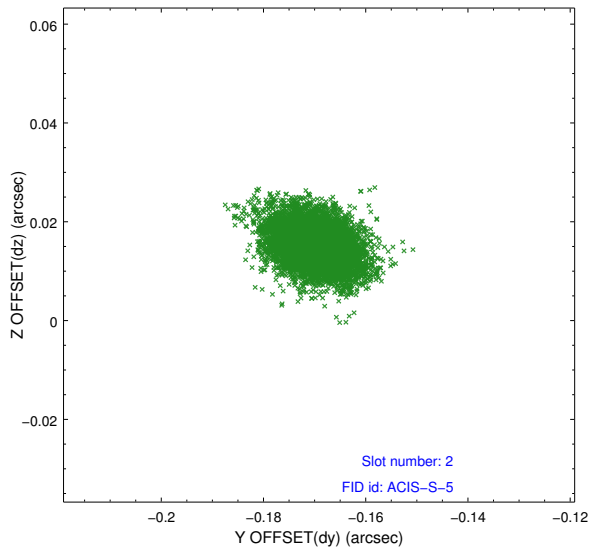
2.5.1 Slot 0



2.5.2 Slot 1



2.5.3 Slot 2



A Summary

A.1 Status

V&V Scientist	Jen Lauer
V&V Date (YYYY-MM-DD)	2012.06.01
V&V Edition	1
V&V Disposition and Status	OK
V&V Charge Time	28.1449002

A.2 Comments