

V&V Reference Report

L2 ASCDS Version : 8.4.4

Observation 10572 - L2 Version 2
Chandra X-Ray Center

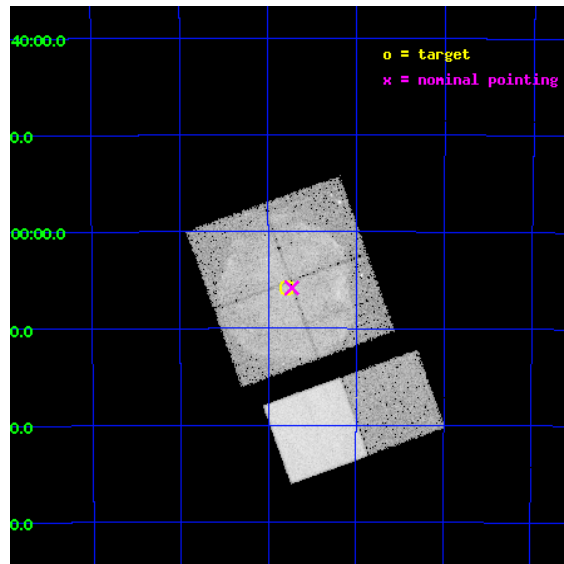
L2 Processing Date : May 19 2012

Contents

1	Front	2
2	OBI	3
2.1	OBI	3
2.1.1	Images	3
2.1.2	Bias	3
2.1.3	Parameters	4
2.1.4	Events	4
2.2	Compared Parameters	5
2.3	Aspect	6
2.4	Star Slots	9
2.4.1	Slot 3	9
2.4.2	Slot 4	10
2.4.3	Slot 5	11
2.4.4	Slot 6	12
2.4.5	Slot 7	13
2.5	FID Slots	14
2.5.1	Slot 0	14
2.5.2	Slot 1	15
2.5.3	Slot 2	16
A	Summary	17
A.1	Status	17
A.2	Comments	17

1 Front

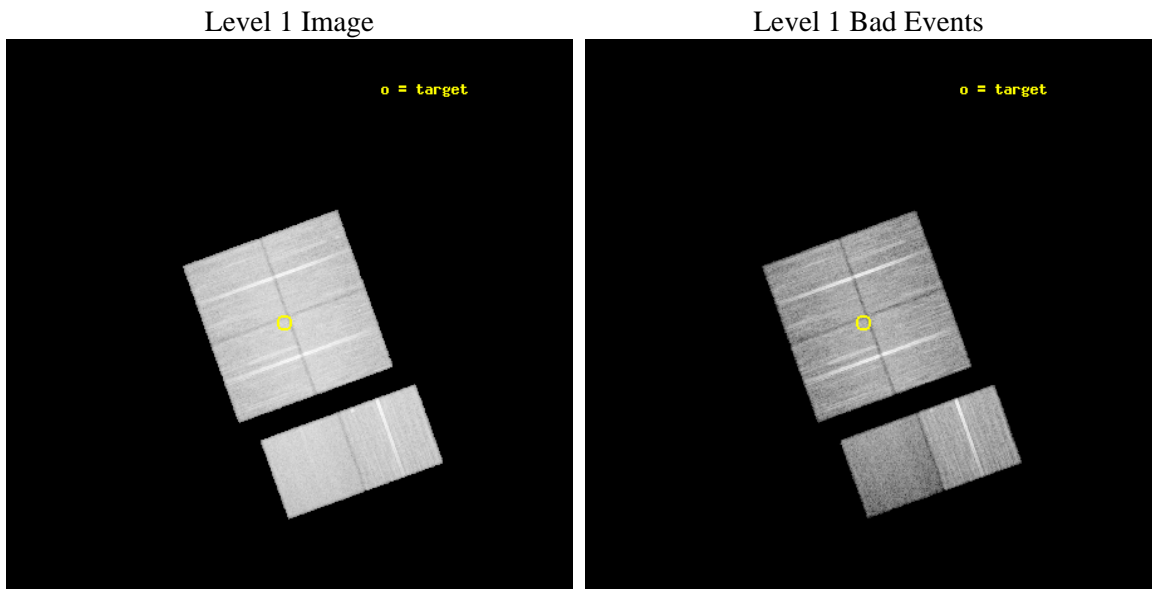
seq_num	501008	Sequence number
obs_id	10572	Observation id
title	Galactic Supernova Remnant G272.2-3.2	Proposal title
observer	Professor Gordon Garmire	Principal investigator
object	G272.2-3.2	Source name
dtcycle	0	
cycle	P	events from which exps? Prim/Second/Both
ra_targ	136.695833	Observer's specified target RA [deg]
dec_targ	-52.097222	Observer's specified target Dec [deg]
ra_nom	136.68270889201	Nominal RA [deg]
dec_nom	-52.096886893031	Nominal Dec [deg]
roll_nom	160.19833168516	Nominal Roll [deg]
revision	2	Processing version of data
ontime	23126.358923674	Sum of GTIs [s]
livetime	22833.519041961	Livetime [s]
ontime0	23123.117943347	Sum of GTIs [s]
ontime1	23119.877062619	Sum of GTIs [s]
ontime2	23119.876953125	Sum of GTIs [s]
ontime3	23126.358923674	Sum of GTIs [s]
ontime6	23129.599913895	Sum of GTIs [s]
ontime7	23129.599913895	Sum of GTIs [s]
l2events	189771	Number of level 2 events



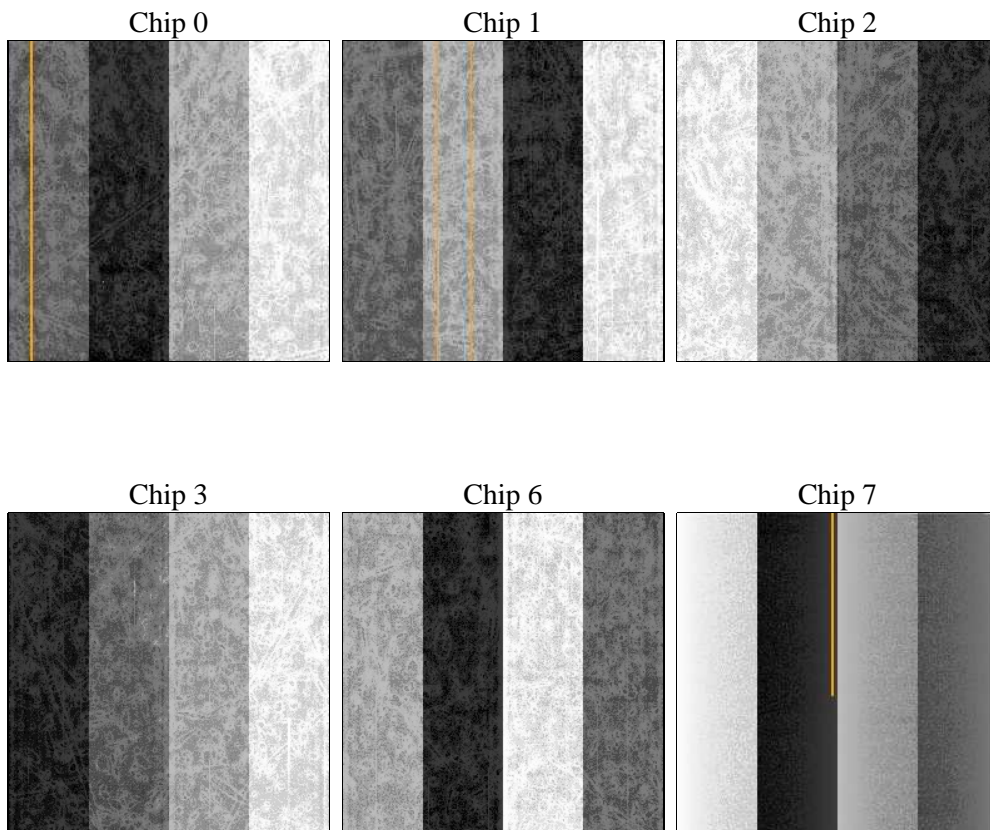
2 OBI

2.1 OBI

2.1.1 Images



2.1.2 Bias



2.1.3 Parameters

obi_num	1	Obi number	sched_exp_time	22999.769000	[s] Scheduled observation exposure time
ascdsver	8.4.4	Processing system revision	ontime	23126.358923674	Sum of GTIs [s]
caldbver	4.4.9	 	ontime0	23123.117943347	Sum of GTIs [s]
date	2012-05-19T22:01:54	Date and time of file creation	ontime1	23119.877062619	Sum of GTIs [s]
revision	2	Processing version of data	ontime2	23119.876953125	Sum of GTIs [s]
			ontime3	23126.358923674	Sum of GTIs [s]
			ontime6	23129.599913895	Sum of GTIs [s]
			ontime7	23129.599913895	Sum of GTIs [s]
			l1events	1090639	Number of level 1 events

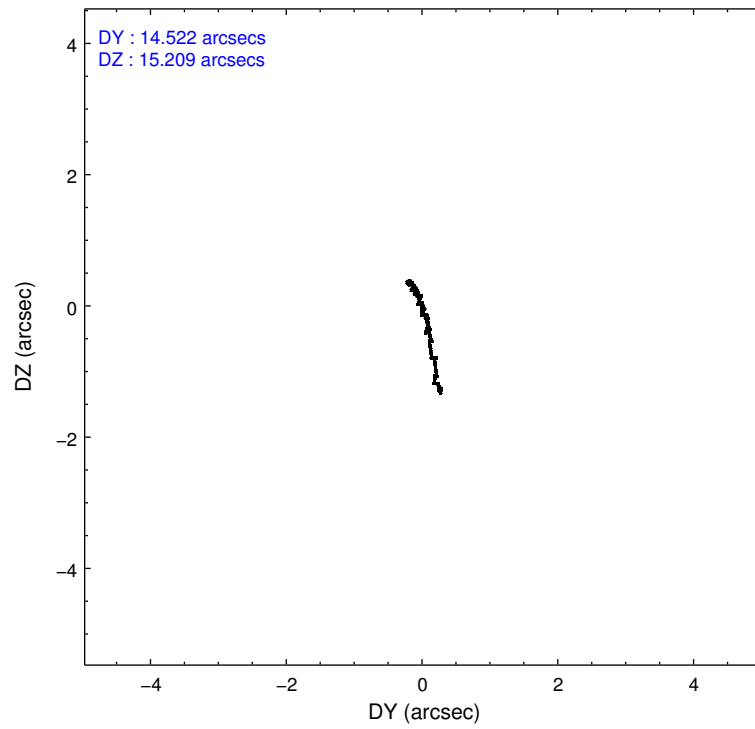
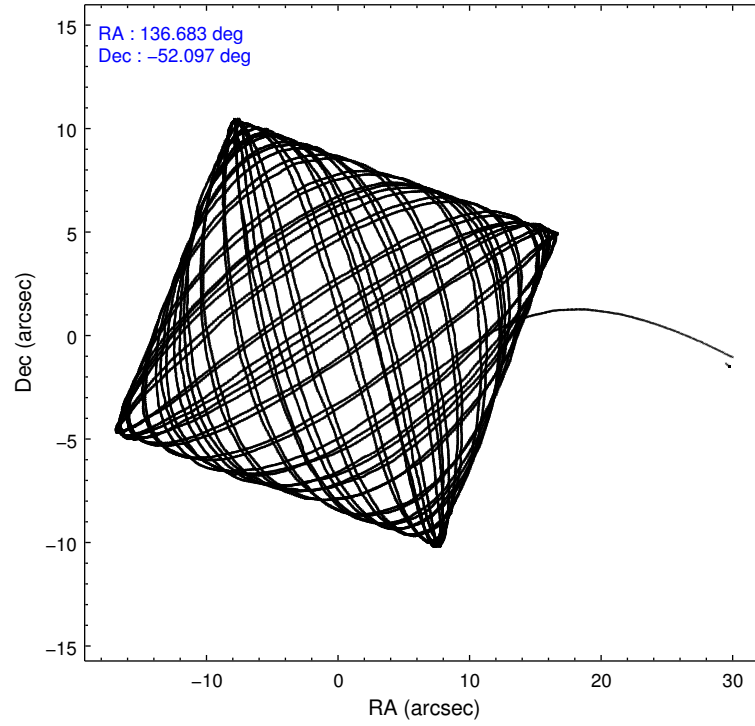
2.1.4 Events

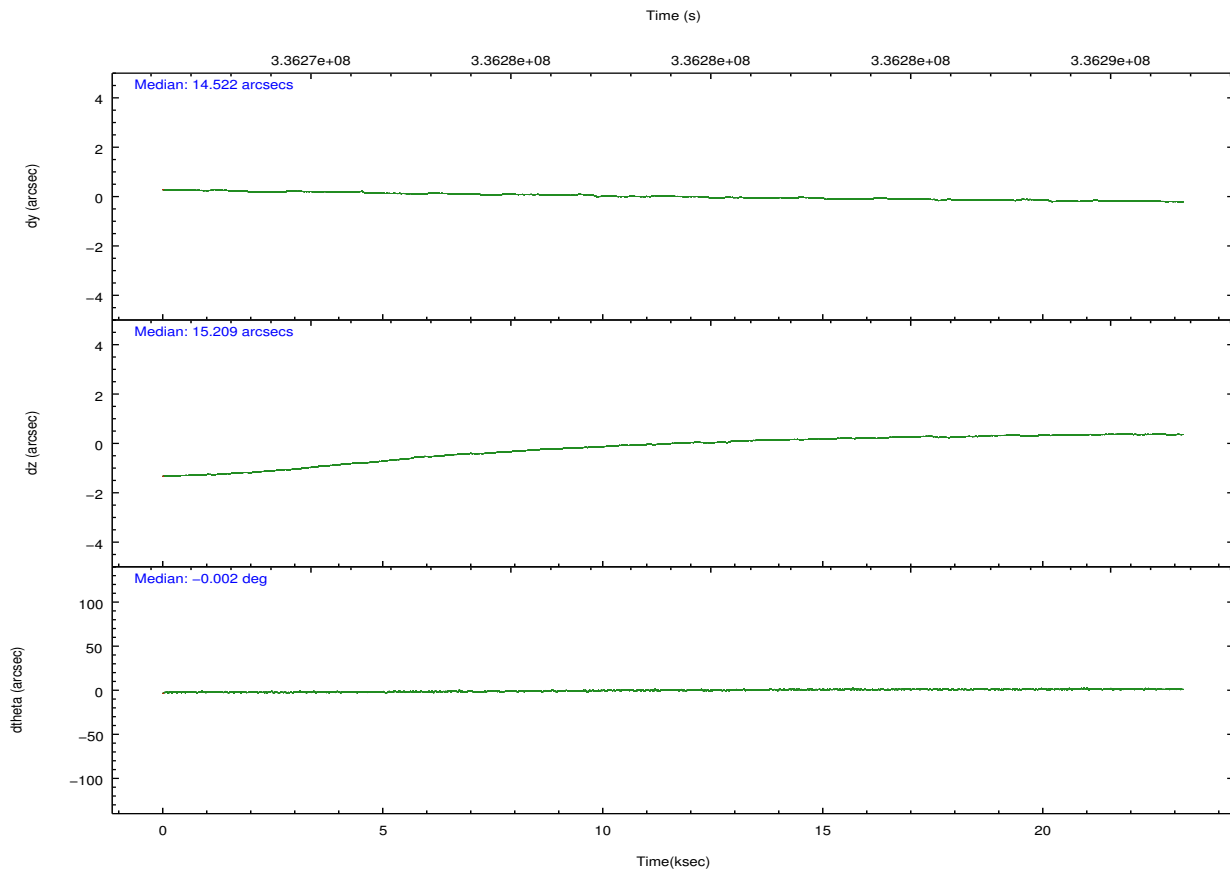
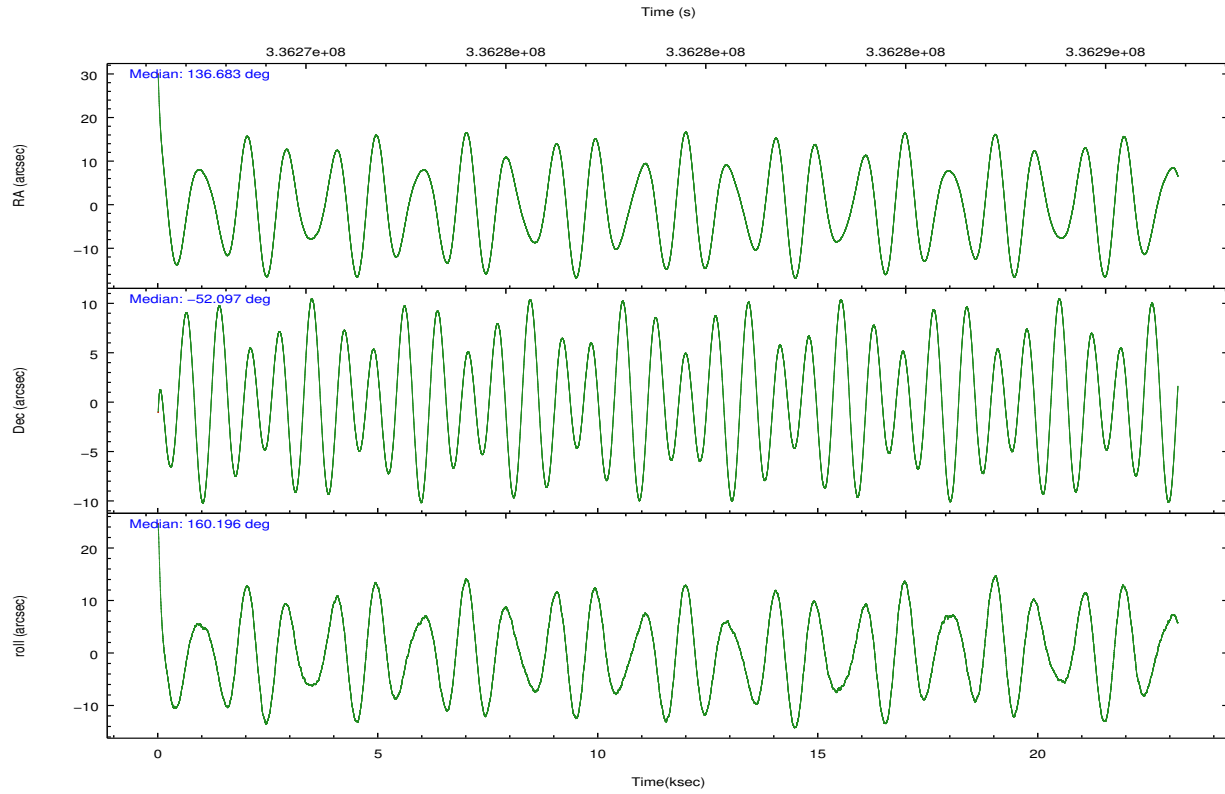
	ccd 0	ccd 1	ccd 2	ccd 3	ccd 6	ccd 7		ccd 0	ccd 1	ccd 2	ccd 3	ccd 6	ccd 7
level 1 events	173715	173817	197684	189115	184119	172189	grade 0 events	12736	13469	16302	15820	6591	8553
rejected events	148750	147067	169144	161293	165411	88024		7%	7%	8%	8%	3%	4%
rejected %	85%	84%	85%	85%	89%	51%	grade 1 events	150	104	185	166	87	257
								0%	0%	0%	0%	0%	0%
							grade 2 events	4950	4794	5012	4555	4526	17840
								2%	2%	2%	2%	2%	10%
							grade 3 events	2060	2281	1960	2109	1999	7971
								1%	1%	0%	1%	1%	4%
							grade 4 events	1954	2318	2144	2038	1964	7833
								1%	1%	1%	1%	1%	4%
							grade 5 events	5397	5816	5072	6362	6415	18383
								3%	3%	2%	3%	3%	10%
							grade 6 events	3266	3895	3126	3304	3634	41976
								1%	2%	1%	1%	1%	24%
							grade 7 events	143202	141140	163883	154761	158903	69376
								82%	81%	82%	81%	86%	40%

2.2 Compared Parameters

Parameter	Planned	Actual	Parameter	Planned	Actual
Instrument	ACIS	ACIS	Obspar format version number	7	7
Detector	ACIS-012367	ACIS-012367	Obspar file type	PREDICTED	ACTUAL
Grating	NONE	NONE	Obspar update status	NONE	UPDATED
Data mode	VFAINT	VFAINT	CCD I0 on	Y	Y
Observation mode	POINTING	POINTING	CCD I1 on	Y	Y
[deg] Pointing RA	136.726719	136.6827088920093	CCD I2 on	Y	Y
[deg] Pointing Dec	-52.091885	-52.09688689303145	CCD I3 on	Y	Y
[deg] Pointing Roll	160.024372	160.1983316851628	CCD S0 on	N	N
[mm] SIM focus pos	-0.782348	-0.7809083437167272	CCD S1 on	N	N
[mm] SIM defocus	0	0.001439871863259334	CCD S2 on	O2	Y
[mm] SIM translation stage pos	-233.592463	-233.5874344608287	CCD S3 on	O1	Y
[mm] SIM translation stage offset	0	-0.005018542100998502	CCD S4 on	N	N
[s] Observation start time (MET)	336267640.184000	336266535.74834	CCD S5 on	N	N
Observation start date	2008-08-27T23:39:35	2008-08-27T23:22:15	Number of optional ACIS chips dropped	0	0
[s] Observation end time (MET)	336290640.184000	336290878.47453	On-chip summing requested	N	N
Observation end date	2008-08-28T06:02:55	2008-08-28T06:07:58	Subarray requested	NONE	NONE
Read mode	TIMED	TIMED	Alternating exposures requested	N	N
			[s] Primary exposure time	0.000000	3.2

2.3 Aspect



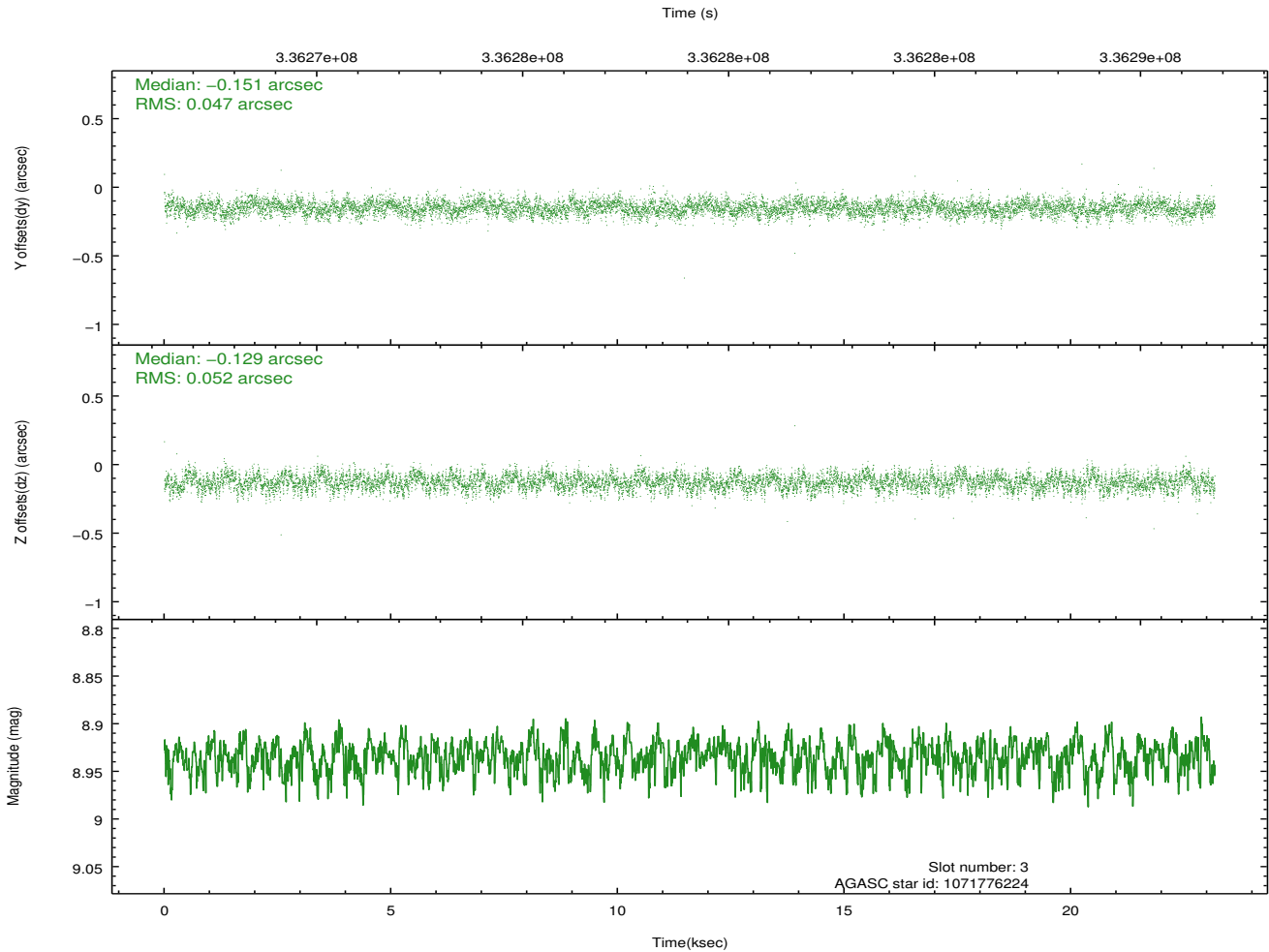
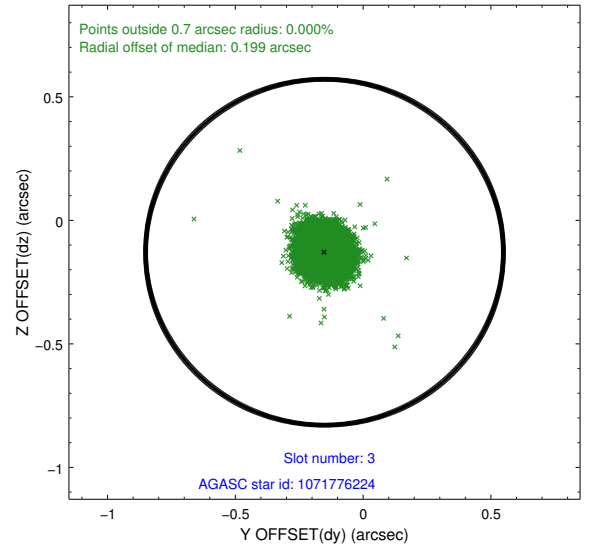
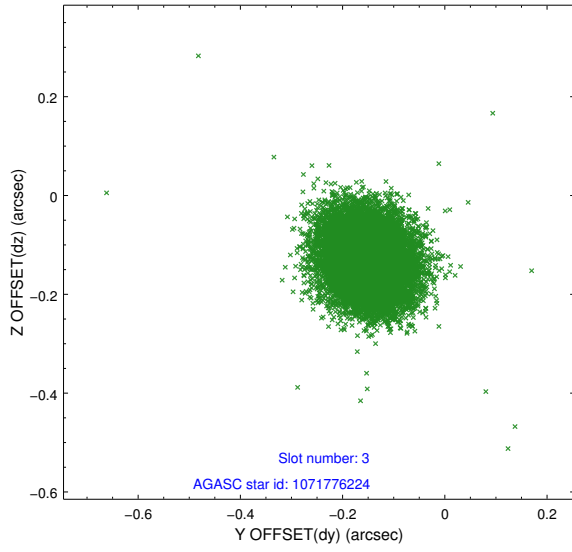


Slot Statistics

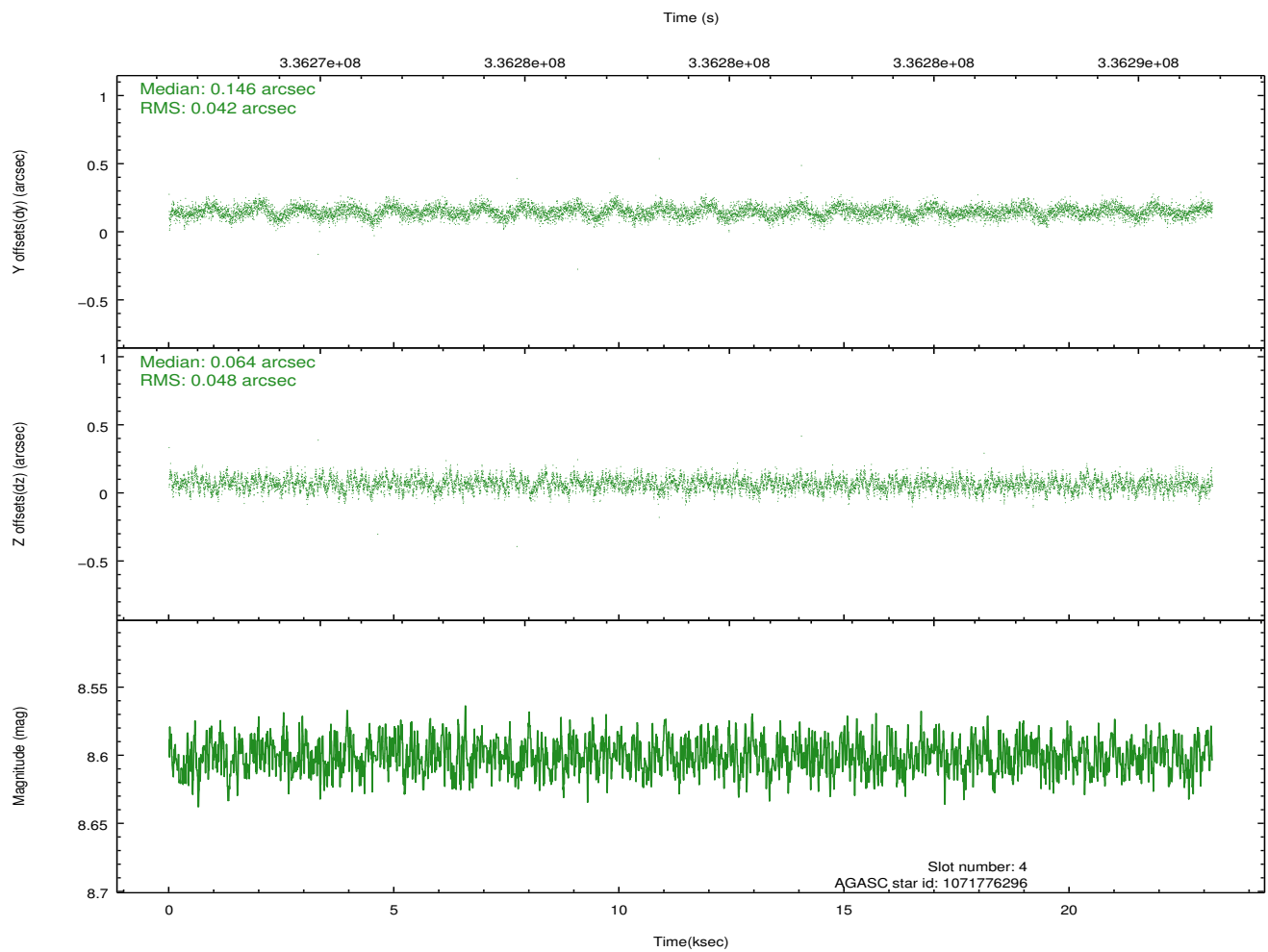
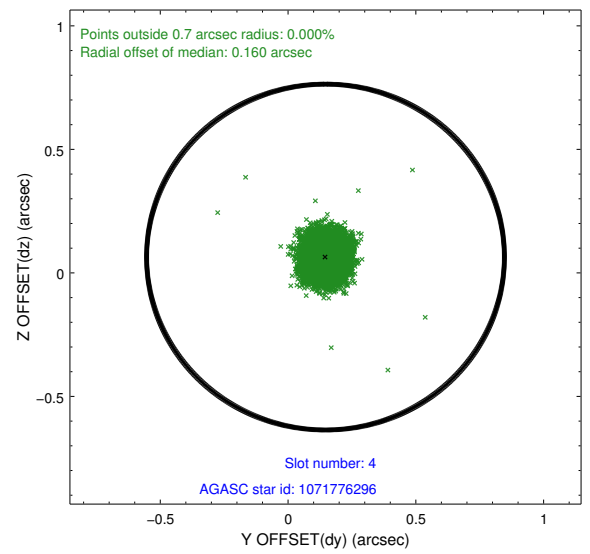
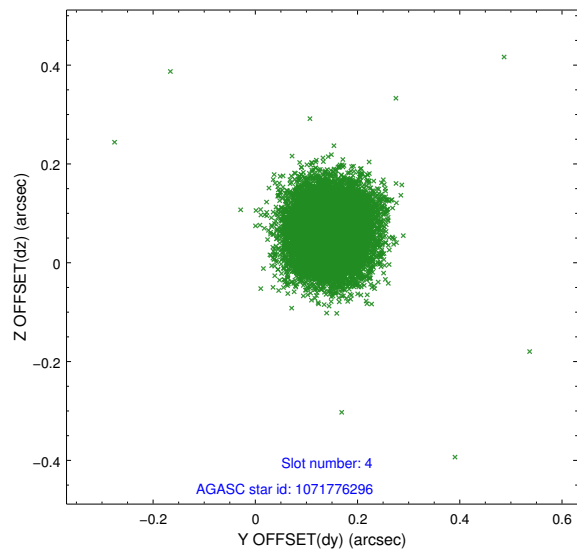
slot	status	id	mag	n_pts	med_dy	med_dz	dr1	dr2	ra	dec	mean_y	mean_z
0	FID	ACIS-I-1	7.09	5653	0.042	-0.012	0.024	0.045	0.000000	0.000000	924.99	-838.61
1	FID	ACIS-I-5	7.07	5653	-0.222	0.044	0.009	0.014	0.000000	0.000000	-1823.32	1058.84
2	FID	ACIS-I-6	7.09	5653	0.090	0.040	0.017	0.044	0.000000	0.000000	390.41	1703.51
3	GUIDE	1071776224	8.93	11302	-0.151	-0.129	0.074	0.119	136.062540	-51.995967	1499.61	184.88
4	GUIDE	1071776296	8.60	11298	0.146	0.064	0.068	0.108	136.837010	-52.361465	-558.76	829.73
5	GUIDE	1071779648	8.67	11303	0.057	-0.037	0.085	0.141	137.777311	-51.635159	-1649.74	-2331.15
6	GUIDE	1071787192	8.38	11300	-0.085	-0.013	0.076	0.121	137.096513	-51.758333	-364.65	-1408.09
7	GUIDE	1071789888	8.96	11296	0.028	0.123	0.103	0.159	136.451135	-51.460781	1357.47	-1922.84

2.4 Star Slots

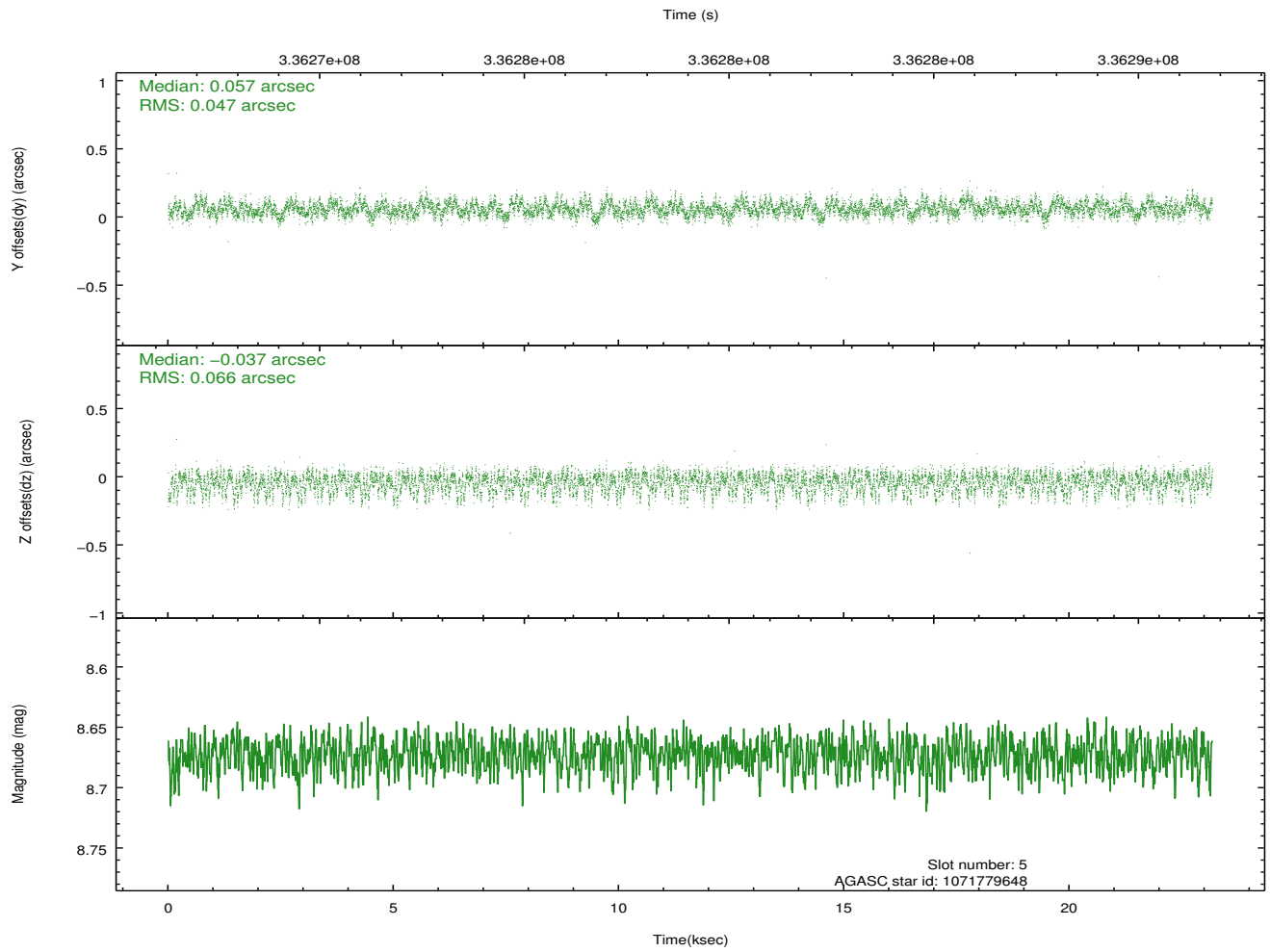
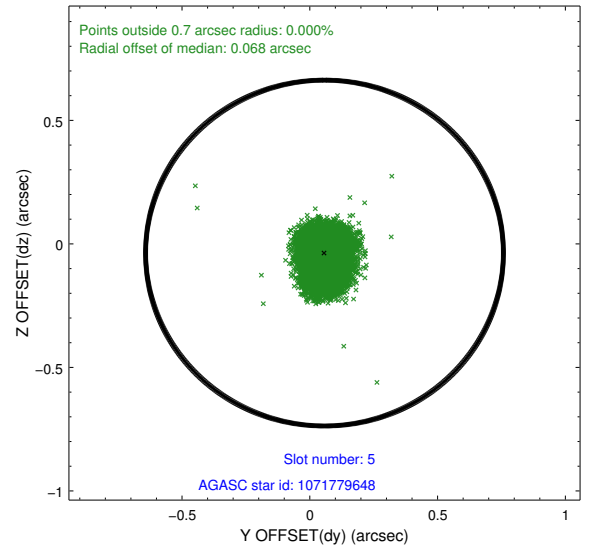
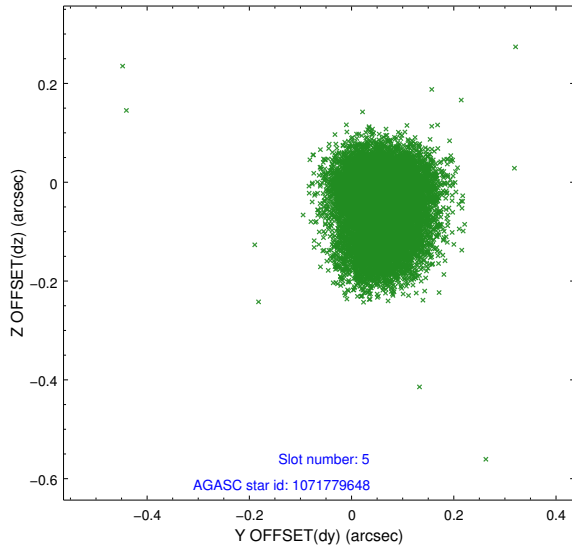
2.4.1 Slot 3



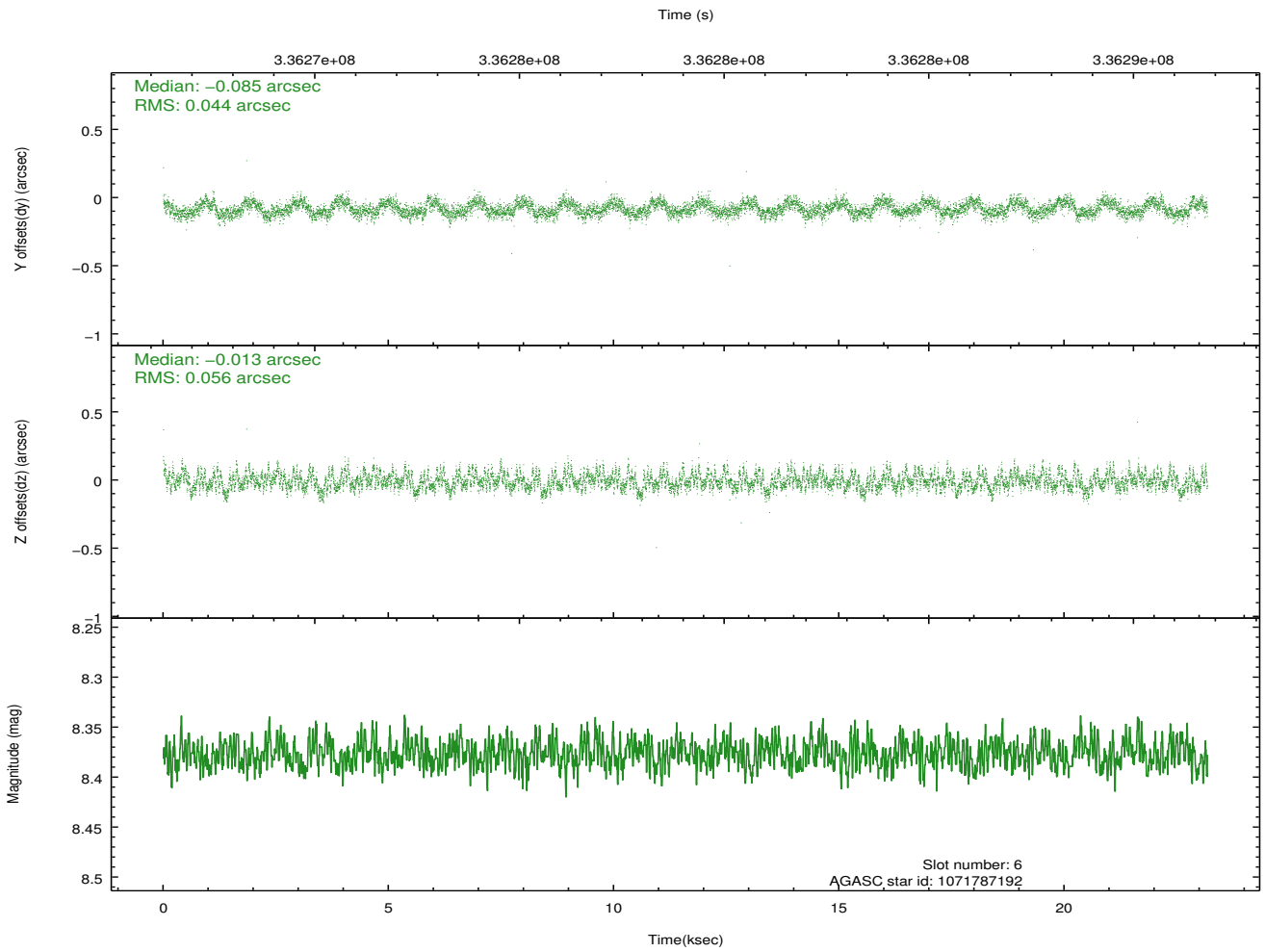
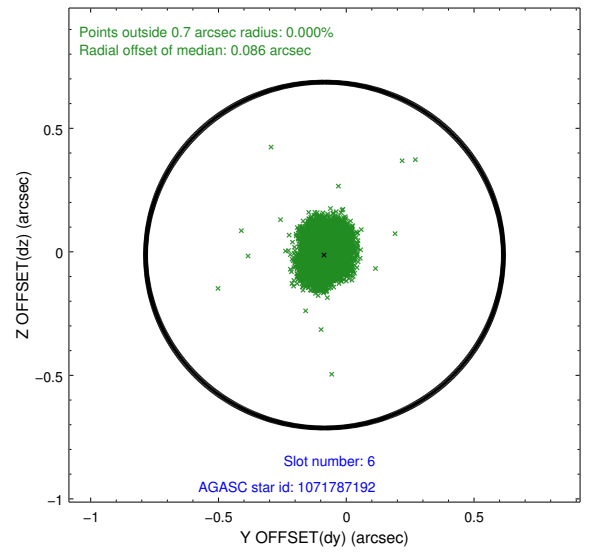
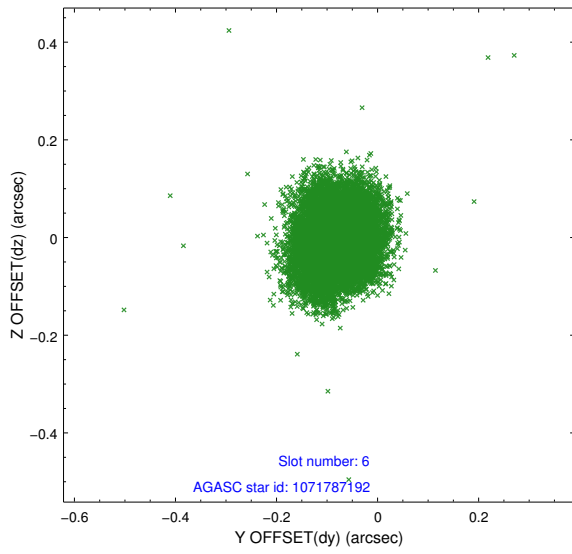
2.4.2 Slot 4



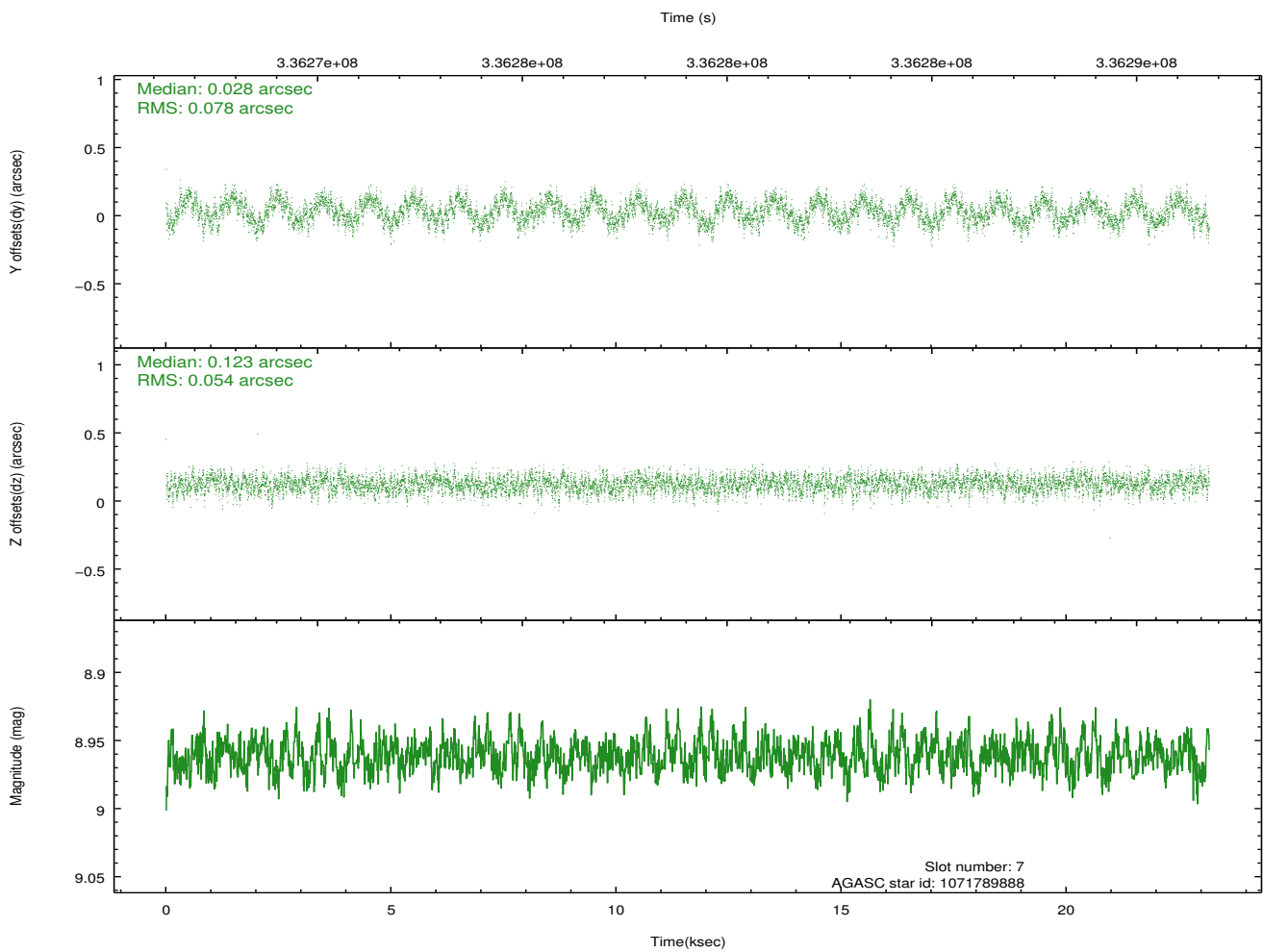
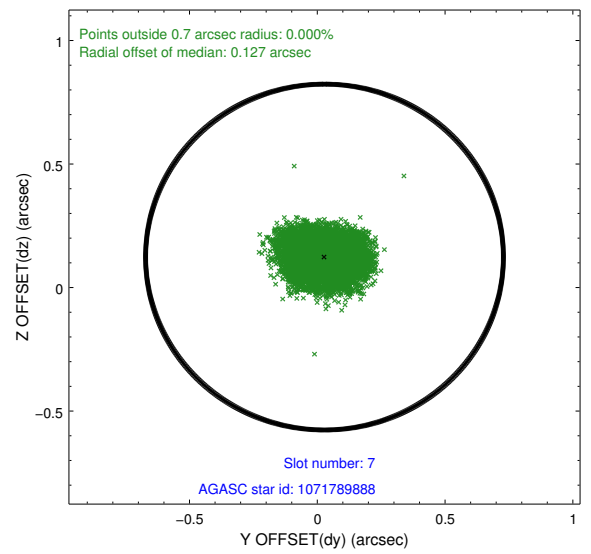
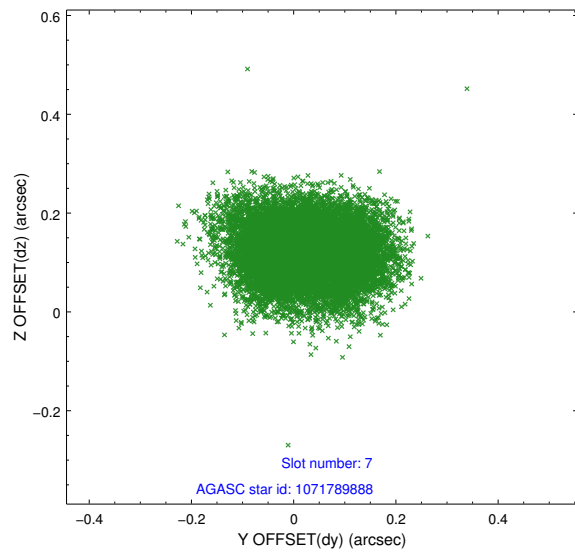
2.4.3 Slot 5



2.4.4 Slot 6

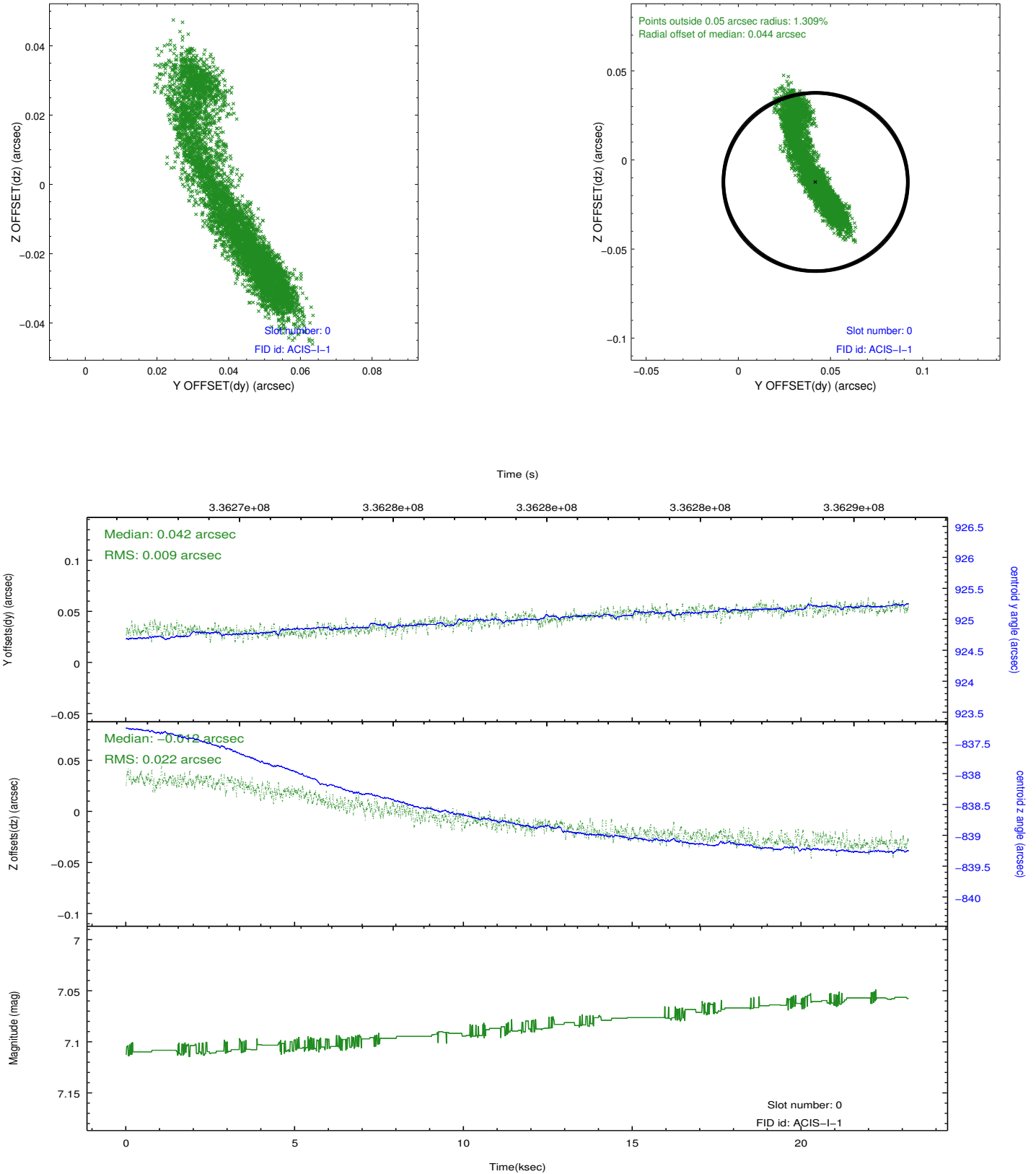


2.4.5 Slot 7

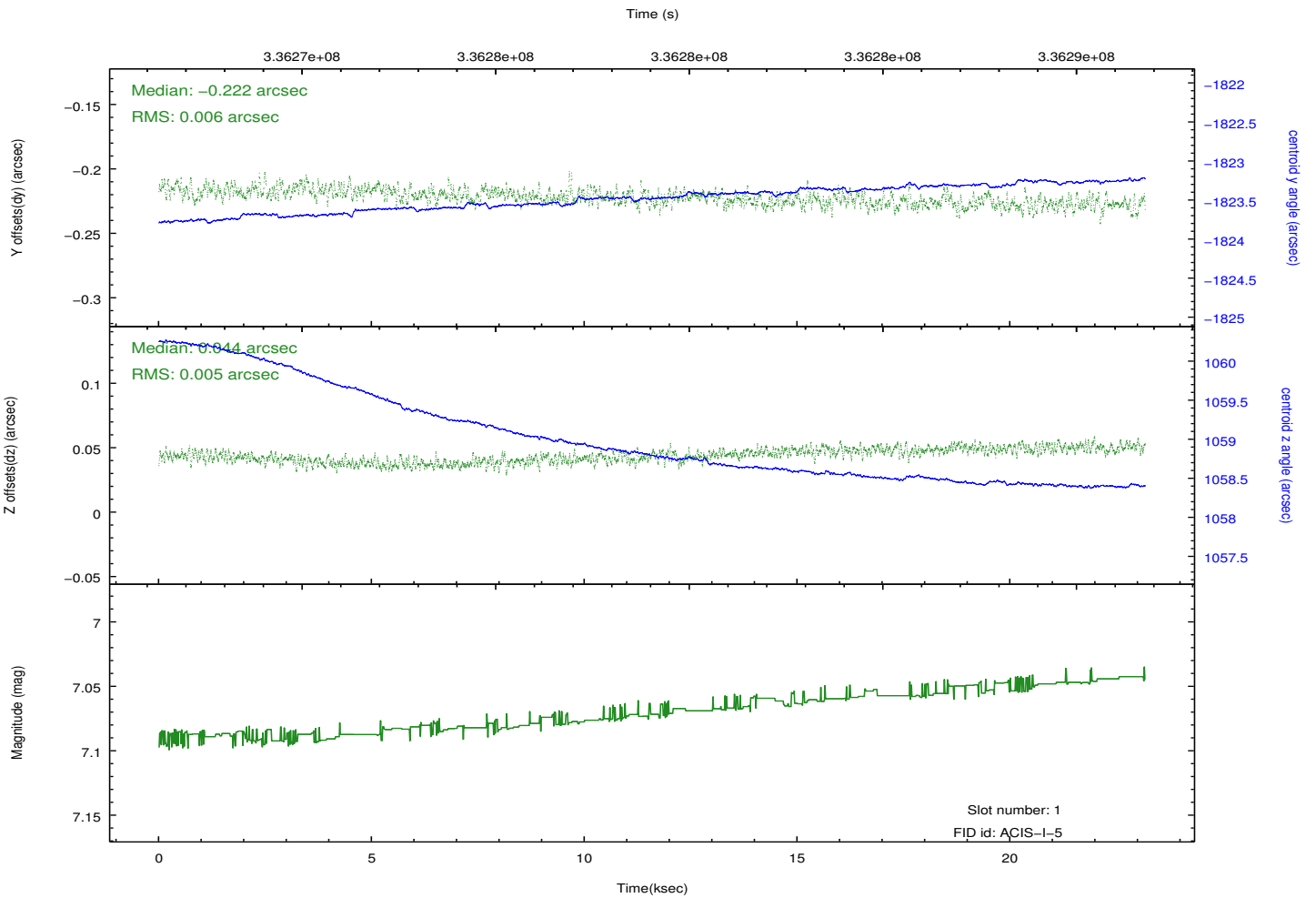
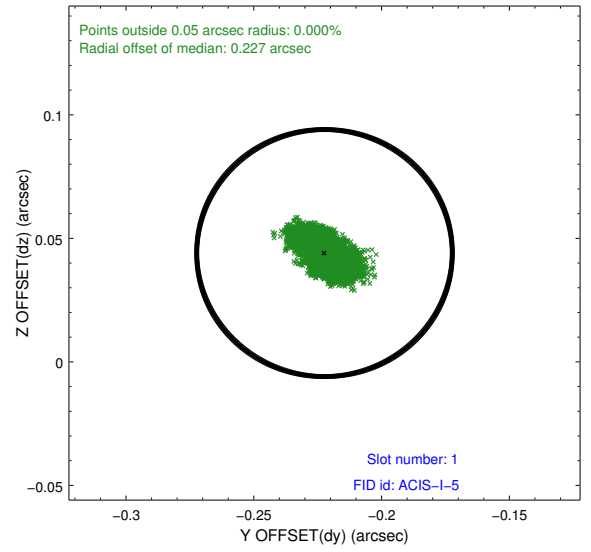
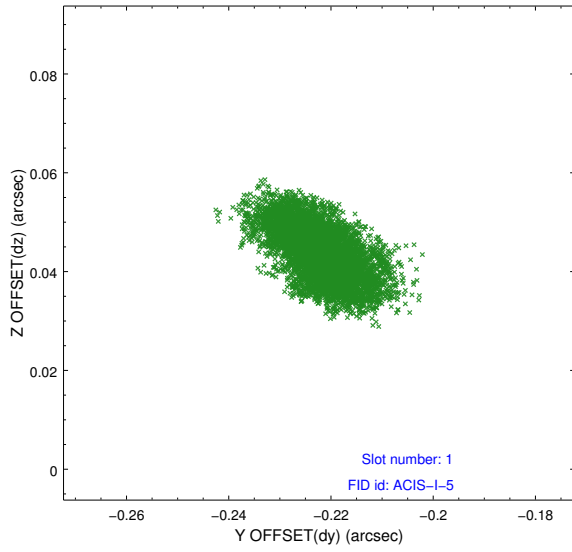


2.5 FID Slots

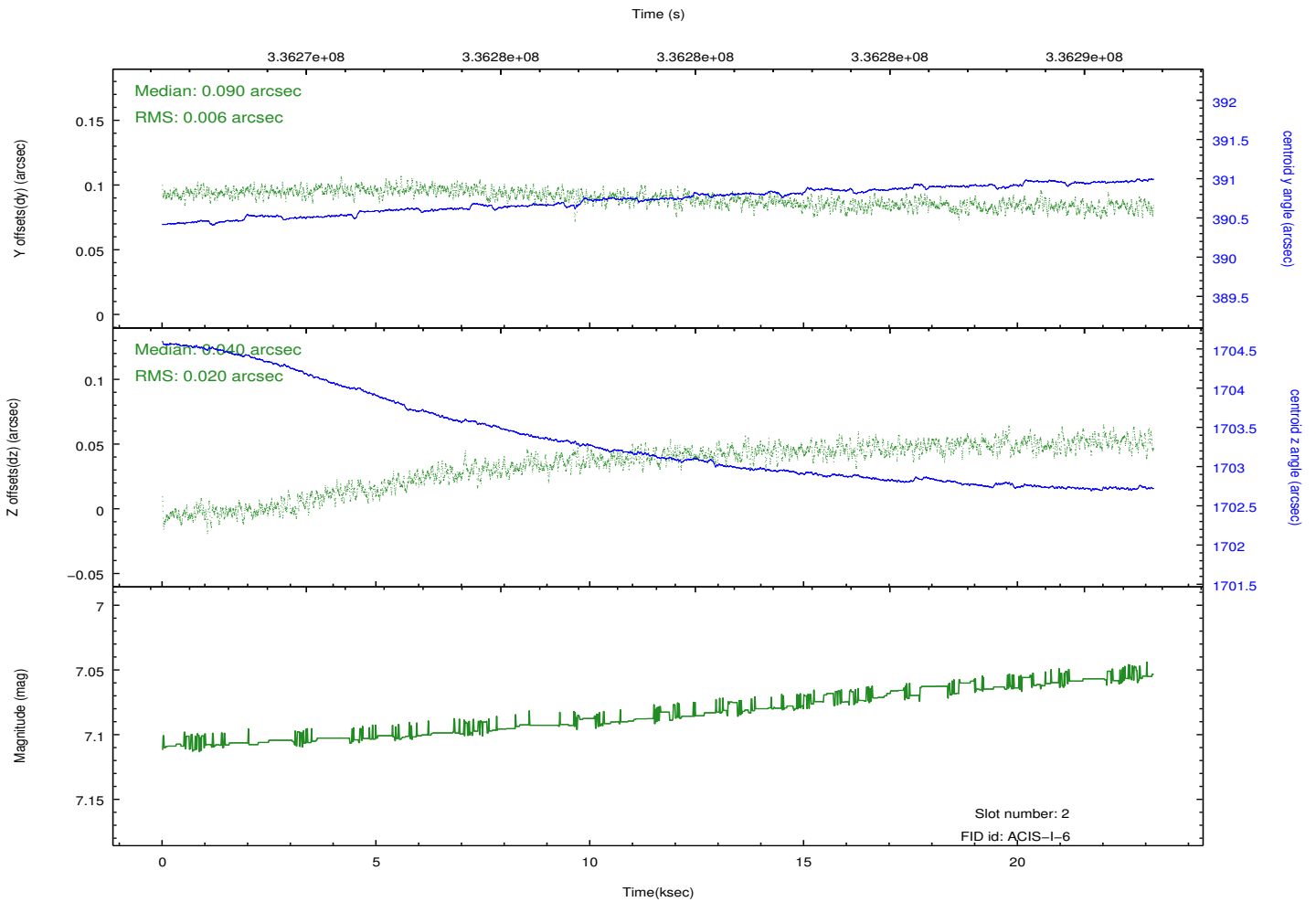
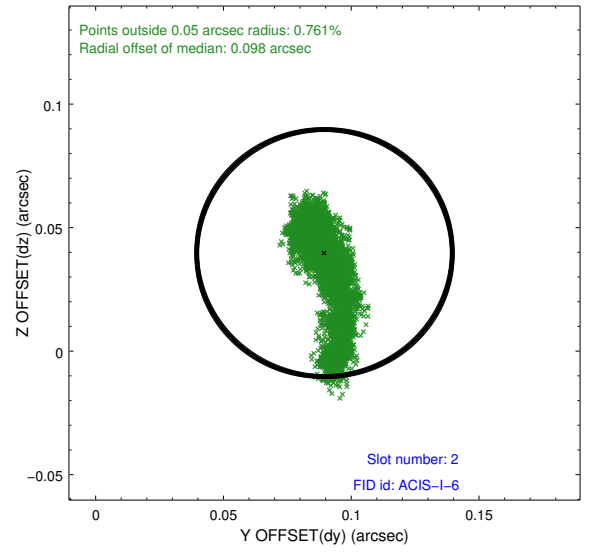
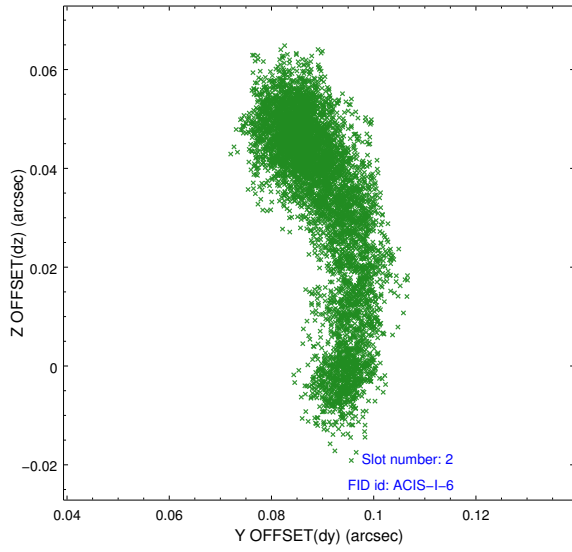
2.5.1 Slot 0



2.5.2 Slot 1



2.5.3 Slot 2



A Summary

A.1 Status

V&V Scientist	Beth Sundheim
V&V Date (YYYY-MM-DD)	2012.05.29
V&V Edition	1
V&V Disposition and Status	OK
V&V Charge Time	23.1263589

A.2 Comments