

V&V Reference Report

L2 ASCDS Version : 8.4.5

Observation 10812 - L2 Version 2
Chandra X-Ray Center

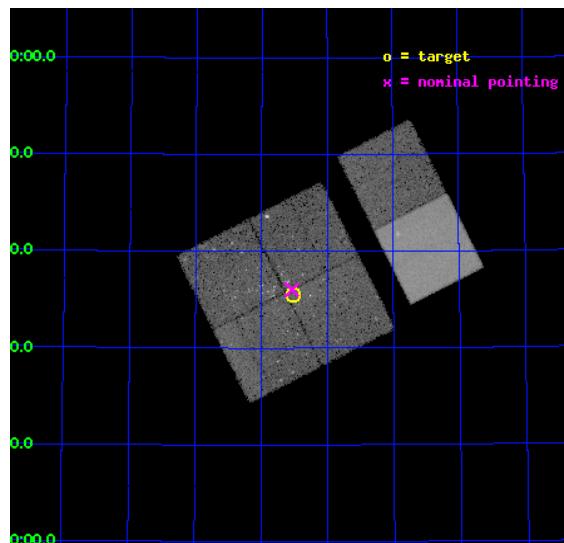
L2 Processing Date : Jun 6 2012

Contents

1	Front	2
2	OBI	3
2.1	OBI	3
2.1.1	Images	3
2.1.2	Bias	3
2.1.3	Parameters	4
2.1.4	Events	4
2.2	Compared Parameters	5
2.3	Aspect	6
2.4	Star Slots	9
2.4.1	Slot 3	9
2.4.2	Slot 4	10
2.4.3	Slot 5	11
2.4.4	Slot 6	12
2.4.5	Slot 7	13
2.5	FID Slots	14
2.5.1	Slot 0	14
2.5.2	Slot 1	15
2.5.3	Slot 2	16
A	Summary	17
A.1	Status	17
A.2	Comments	17

1 Front

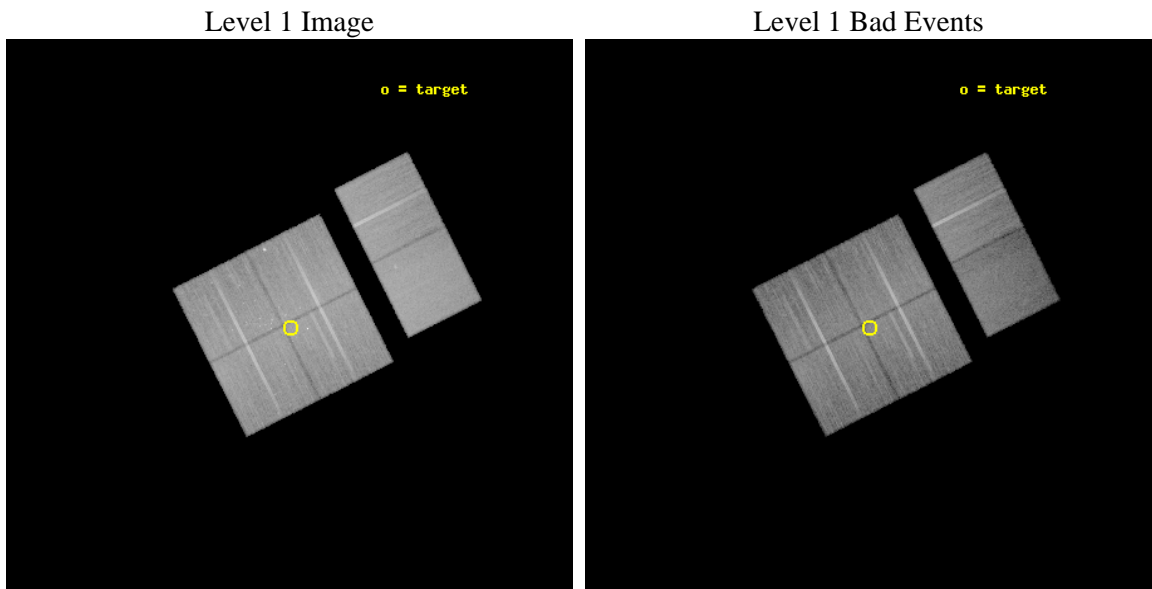
seq_num	200535	Sequence number
obs_id	10812	Observation id
title	Evolution of Young Stars in the Large Massive Cluster Cep OB3b	Pro
observer	Mr. Thomas Allen	Principal investigator
object	V454 Cep sub-cluster	Source name
dtcycle	0	
cycle	P	events from which exps? Prim/Second/Both
ra_targ	343.382083	Observer's specified target RA [deg]
dec_targ	62.592611	Observer's specified target Dec [deg]
ra_nom	343.38500881367	Nominal RA [deg]
dec_nom	62.600565699731	Nominal Dec [deg]
roll_nom	63.206081384668	Nominal Roll [deg]
revision	2	Processing version of data
ontime	25132.799906433	Sum of GTIs [s]
livetime	24814.553260862	Livetime [s]
ontime0	25132.799906433	Sum of GTIs [s]
ontime1	25132.799906433	Sum of GTIs [s]
ontime2	25132.799906433	Sum of GTIs [s]
ontime3	25132.799906433	Sum of GTIs [s]
ontime6	25132.799906433	Sum of GTIs [s]
ontime7	25132.799906433	Sum of GTIs [s]
l2events	216463	Number of level 2 events



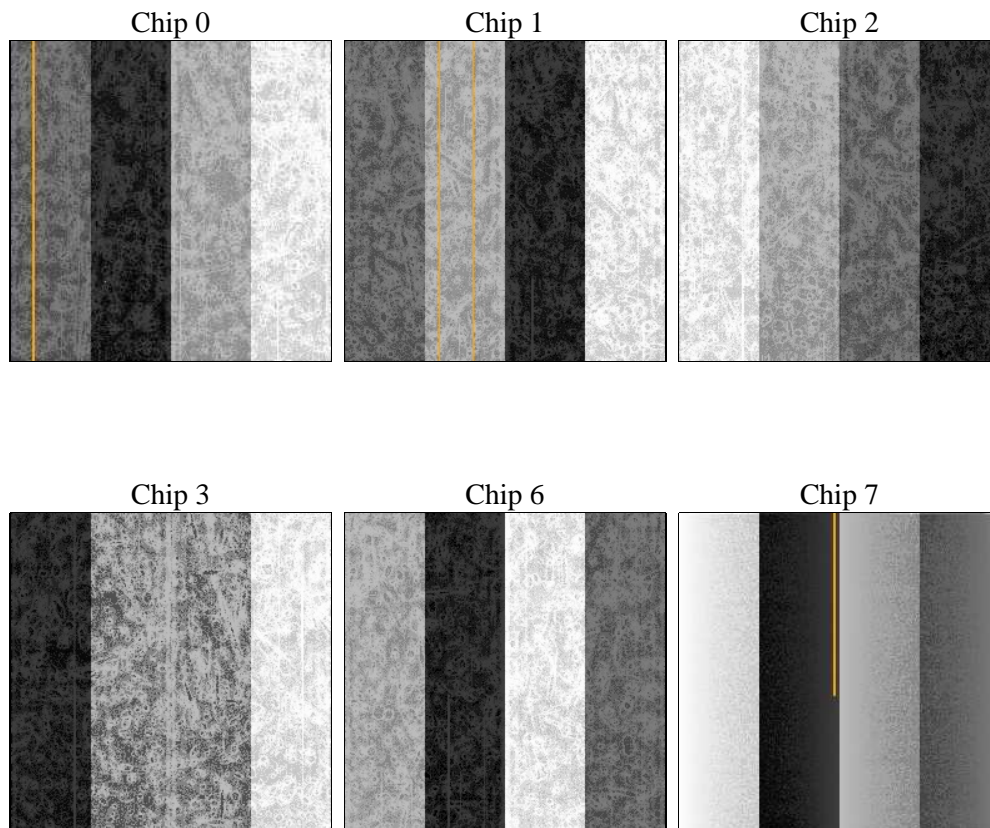
2 OBI

2.1 OBI

2.1.1 Images



2.1.2 Bias



2.1.3 Parameters

obi_num	0	Obi number	sched_exp_time	25000.000000	[s] Scheduled observation exposure time
ascdsver	8.4.5	Processing system revision	ontime	25132.799906433	Sum of GTIs [s]
caldbver	4.4.10	 	ontime0	25132.799906433	Sum of GTIs [s]
date	2012-06-06T07:14:54	Date and time of file creation	ontime1	25132.799906433	Sum of GTIs [s]
revision	2	Processing version of data	ontime2	25132.799906433	Sum of GTIs [s]
			ontime3	25132.799906433	Sum of GTIs [s]
			ontime6	25132.799906433	Sum of GTIs [s]
			ontime7	25132.799906433	Sum of GTIs [s]
			l1events	1402816	Number of level 1 events

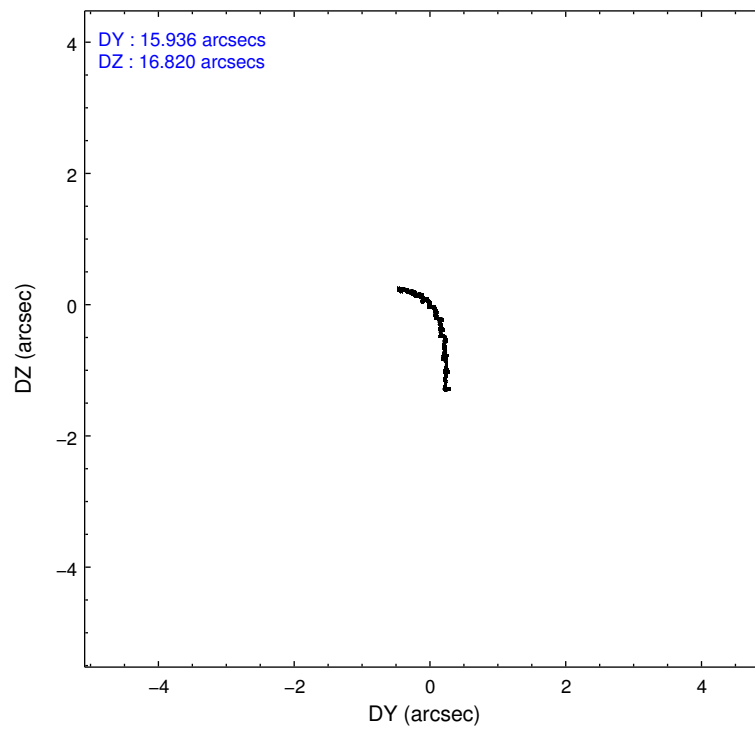
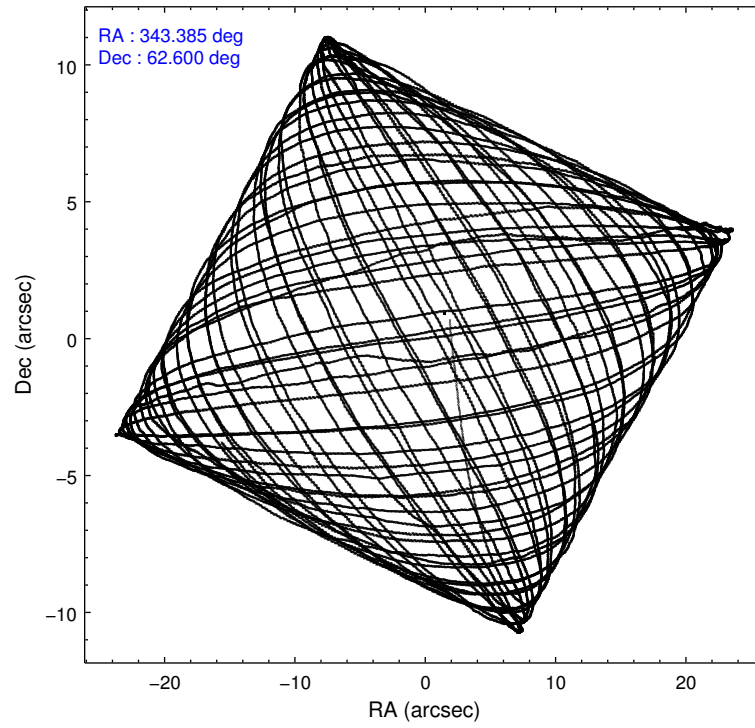
2.1.4 Events

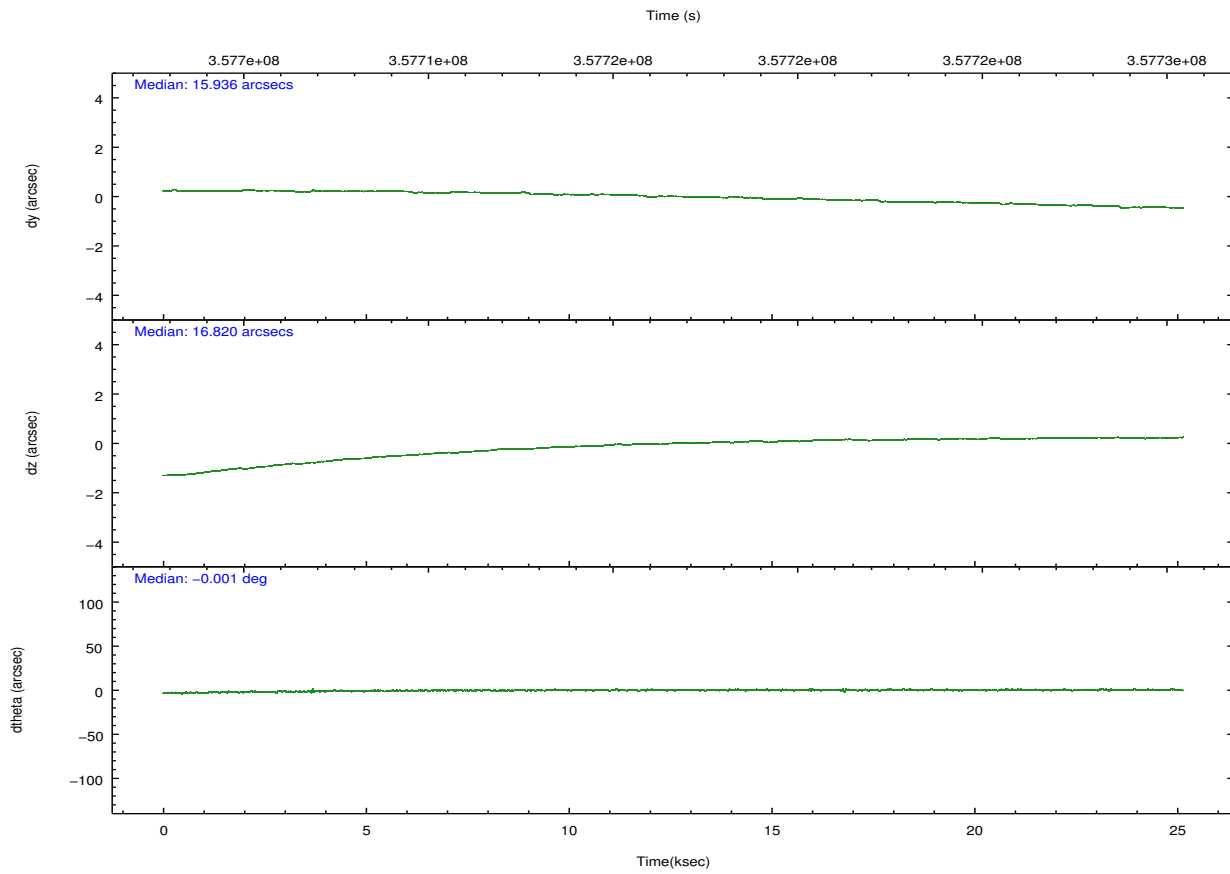
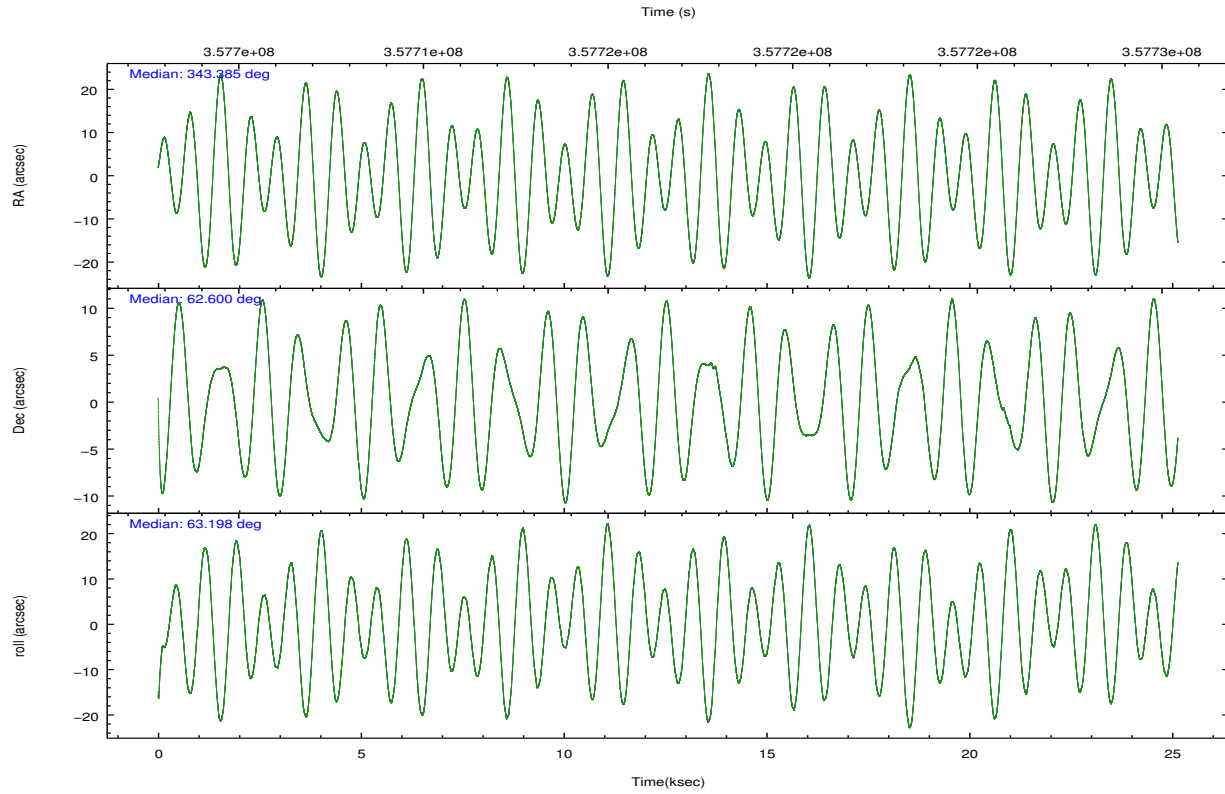
	ccd 0	ccd 1	ccd 2	ccd 3	ccd 6	ccd 7		ccd 0	ccd 1	ccd 2	ccd 3	ccd 6	ccd 7
level 1 events	218904	215759	240923	226855	238740	261635	grade 0 events	11589	10747	10520	10299	8391	11224
rejected events	192510	189120	216272	203072	215409	147200		5%	4%	4%	4%	3%	4%
rejected %	87%	87%	89%	89%	90%	56%	grade 1 events	132	133	164	189	132	292
								0%	0%	0%	0%	0%	0%
							grade 2 events	6100	6259	5823	5195	5650	24635
								2%	2%	2%	2%	2%	9%
							grade 3 events	2714	2876	2514	2455	2548	10966
								1%	1%	1%	1%	1%	4%
							grade 4 events	2572	2825	2622	2546	2595	10975
								1%	1%	1%	1%	1%	4%
							grade 5 events	8272	8984	7788	9606	9715	27802
								3%	4%	3%	4%	4%	10%
							grade 6 events	4544	5258	4308	4434	5357	62585
								2%	2%	1%	1%	2%	23%
							grade 7 events	182981	178677	207184	192131	204352	113156
								83%	82%	85%	84%	85%	43%

2.2 Compared Parameters

Parameter	Planned	Actual	Parameter	Planned	Actual
Instrument	ACIS	ACIS	Obspar format version number	7	7
Detector	ACIS-012367	ACIS-012367	Obspar file type	PREDICTED	ACTUAL
Grating	NONE	NONE	Obspar update status	NONE	UPDATED
Data mode	VFAINT	VFAINT	CCD I0 on	Y	Y
Observation mode	POINTING	POINTING	CCD I1 on	Y	Y
[deg] Pointing RA	343.388566	343.3850088136703	CCD I2 on	Y	Y
[deg] Pointing Dec	62.573143	62.60056569973118	CCD I3 on	Y	Y
[deg] Pointing Roll	62.994242	63.20608138466785	CCD S0 on	N	N
[mm] SIM focus pos	-0.782348	-0.7809083437167272	CCD S1 on	N	N
[mm] SIM defocus	0	0.001439871863259334	CCD S2 on	O1	Y
[mm] SIM translation stage pos	-233.592463	-233.5874344608287	CCD S3 on	O2	Y
[mm] SIM translation stage offset	0	-0.005018542100998502	CCD S4 on	N	N
[s] Observation start time (MET)	357704193.184000	357702487.88376	CCD S5 on	N	N
Observation start date	2009-05-03T02:15:27	2009-05-03T01:48:07	Number of optional ACIS chips dropped	0	0
[s] Observation end time (MET)	357729193.184000	357729544.81011	On-chip summing requested	N	N
Observation end date	2009-05-03T09:12:07	2009-05-03T09:19:04	Subarray requested	NONE	NONE
Read mode	TIMED	TIMED	Alternating exposures requested	N	N
			[s] Primary exposure time	0.000000	3.2

2.3 Aspect



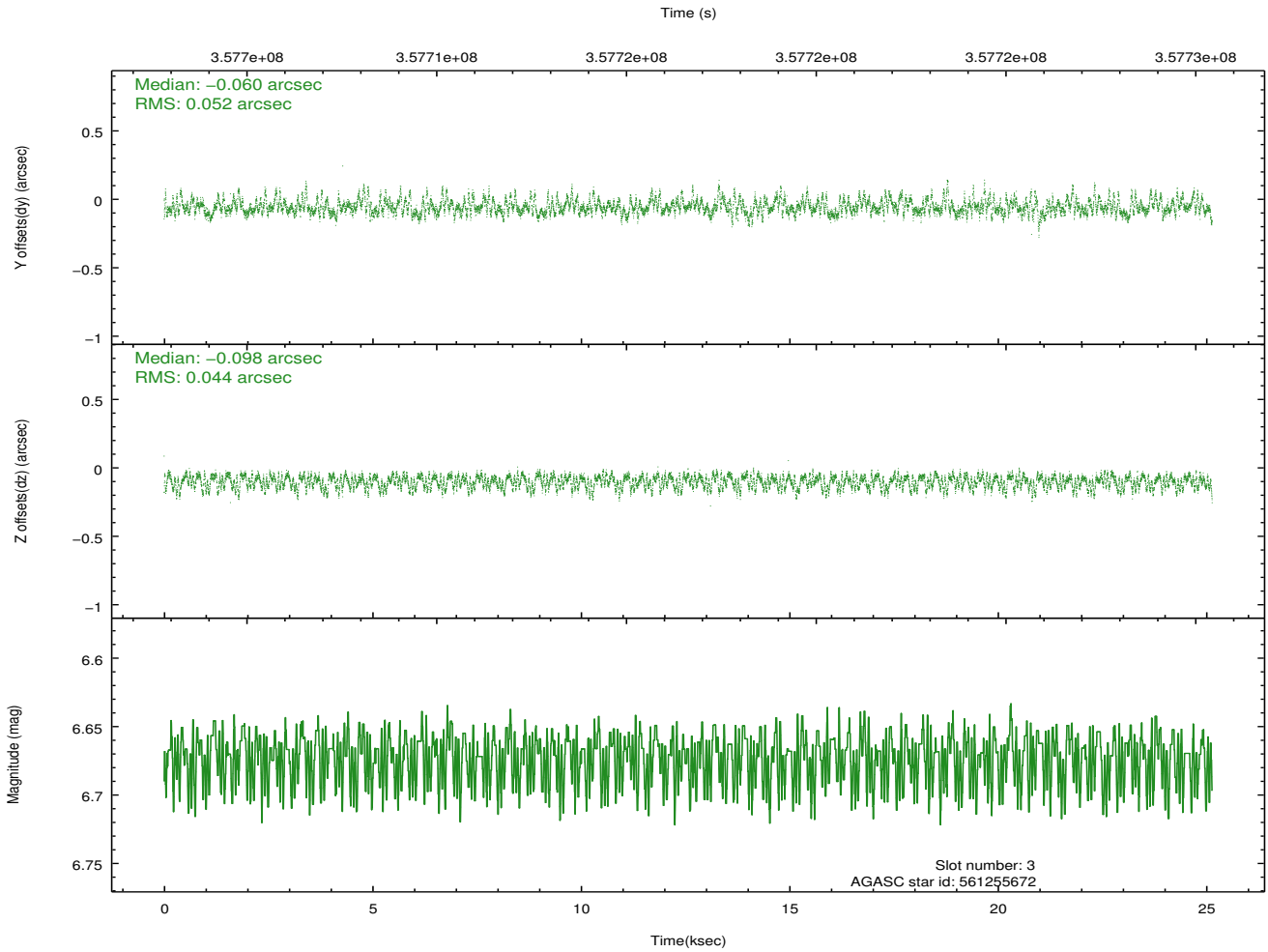
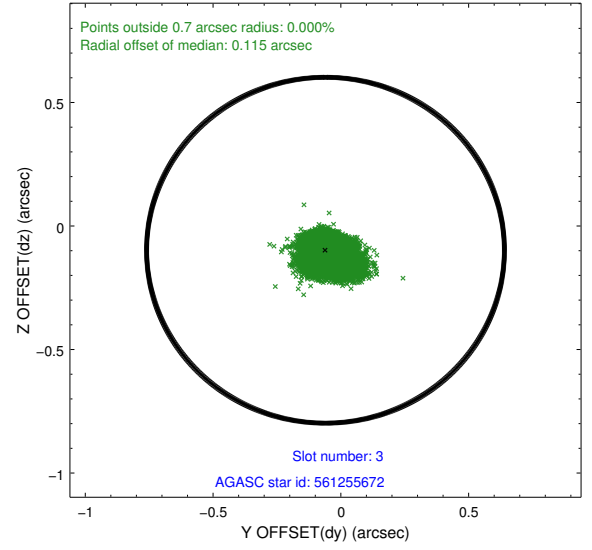
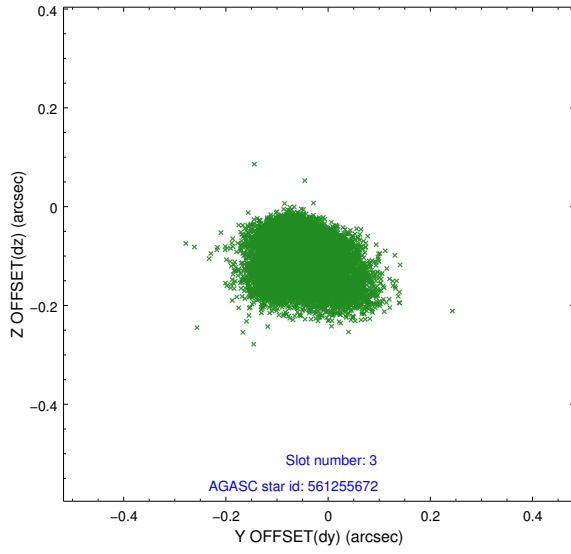


Slot Statistics

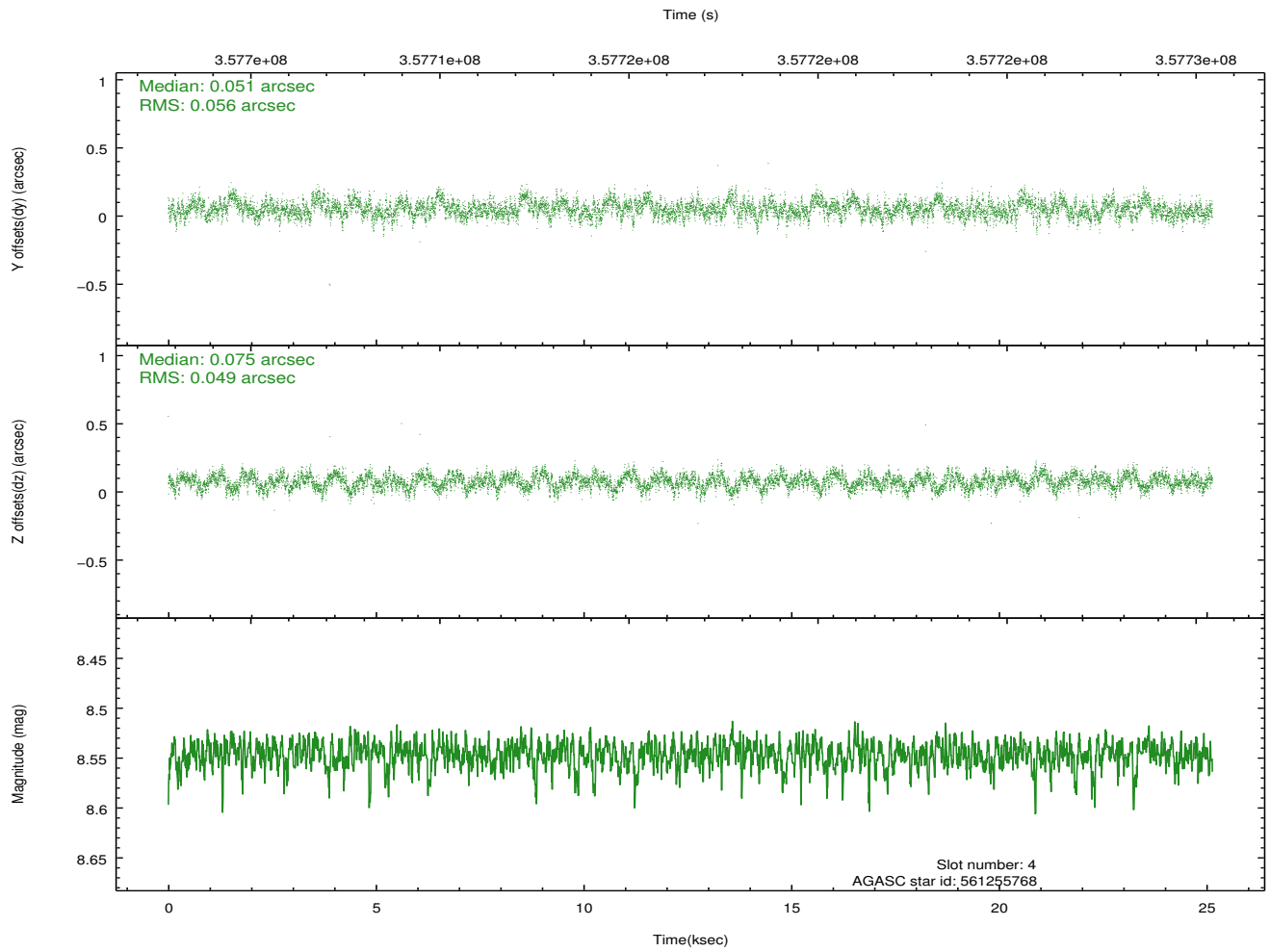
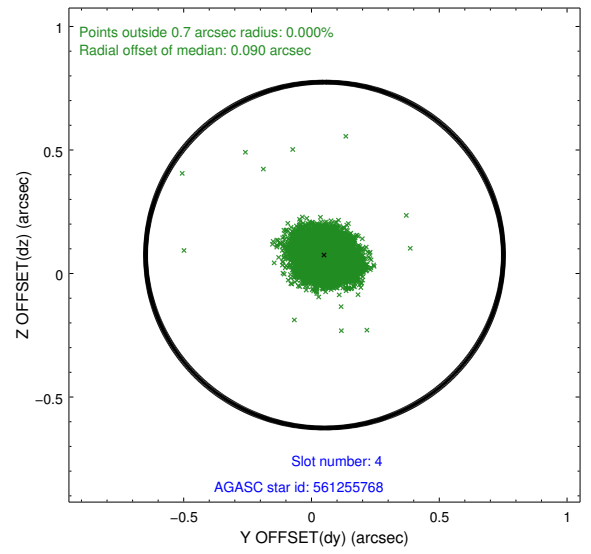
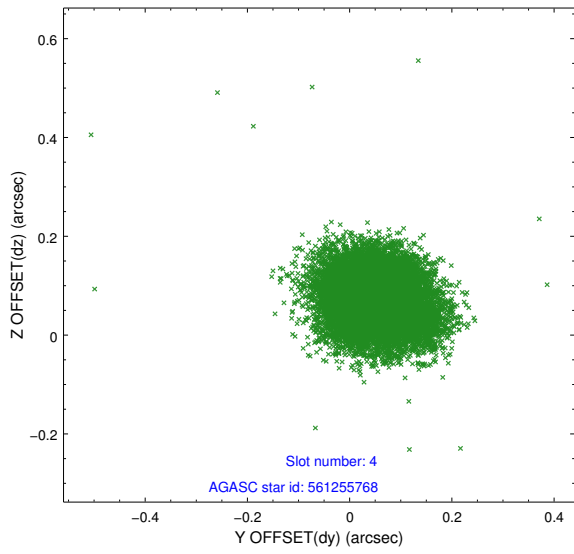
slot	status	id	mag	n_pts	med_dy	med_dz	dr1	dr2	ra	dec	mean_y	mean_z
0	FID	ACIS-I-1	7.05	6132	0.054	-0.023	0.012	0.021	0.000000	0.000000	923.56	-840.31
1	FID	ACIS-I-5	7.04	6132	-0.209	0.059	0.009	0.022	0.000000	0.000000	-1824.71	1057.24
2	FID	ACIS-I-6	7.05	6132	0.064	0.036	0.016	0.024	0.000000	0.000000	389.03	1701.82
3	GUIDE	561255672	6.67	12262	-0.060	-0.098	0.069	0.124	342.872792	62.972182	899.43	1405.52
4	GUIDE	561255768	8.55	12260	0.051	0.075	0.079	0.127	344.276311	63.031635	2139.41	-537.02
5	GUIDE	561256368	8.09	12261	0.019	0.153	0.063	0.101	343.926918	62.306341	-442.82	-1236.67
6	GUIDE	561253264	8.48	12262	-0.072	-0.112	0.062	0.101	342.997096	63.382252	2310.11	1886.49
7	GUIDE	561253040	8.08	12255	0.055	-0.011	0.079	0.122	343.127313	62.440534	-621.68	171.59

2.4 Star Slots

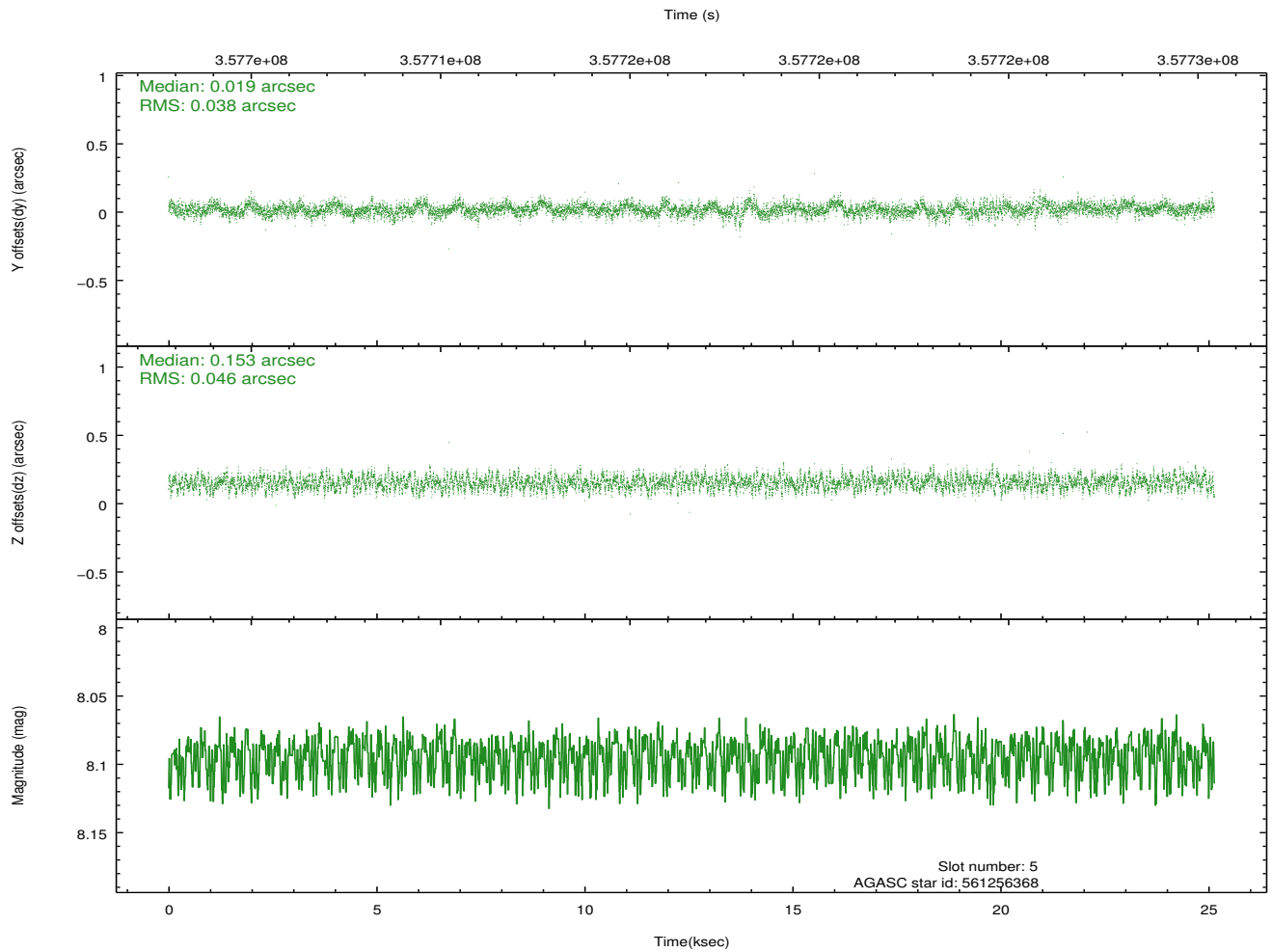
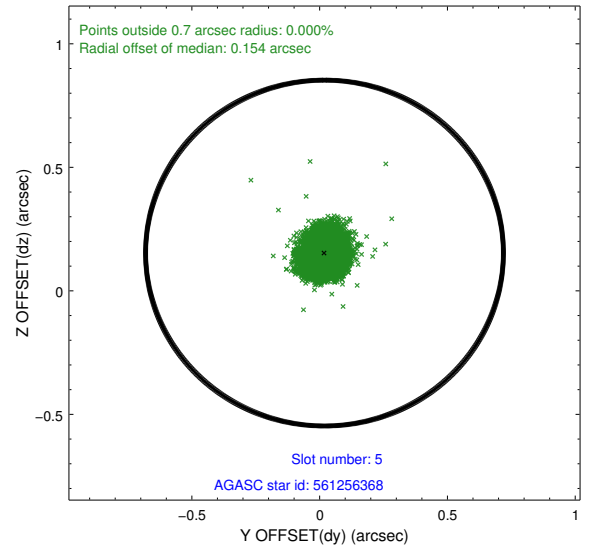
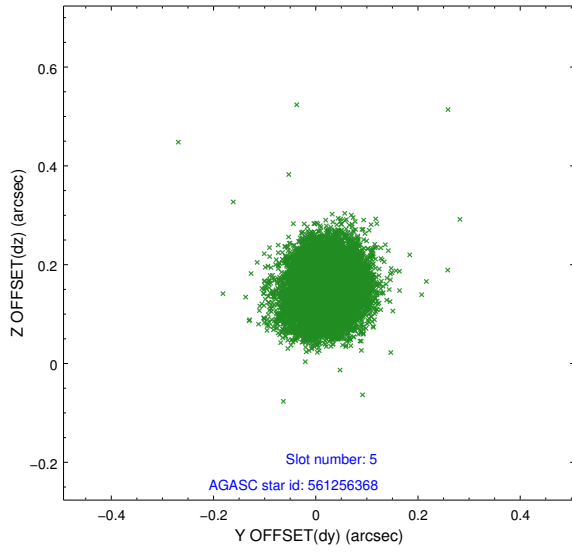
2.4.1 Slot 3



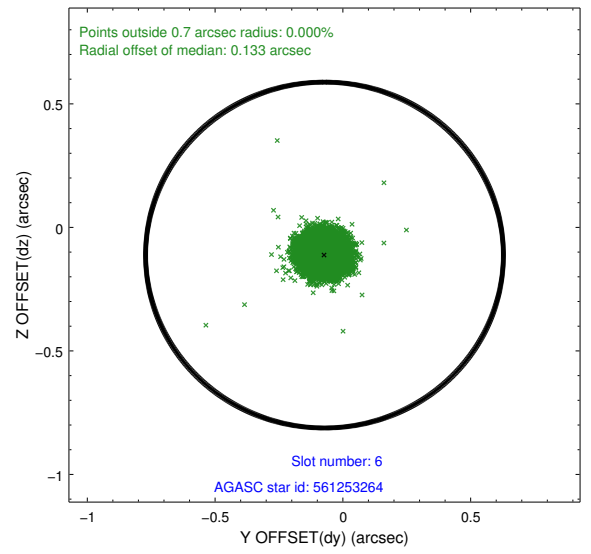
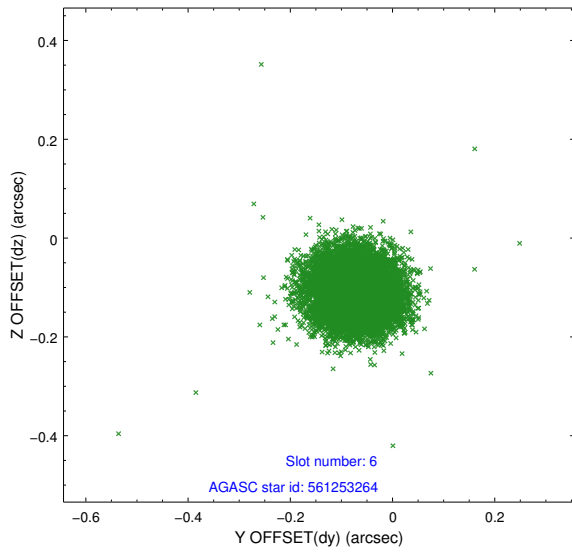
2.4.2 Slot 4



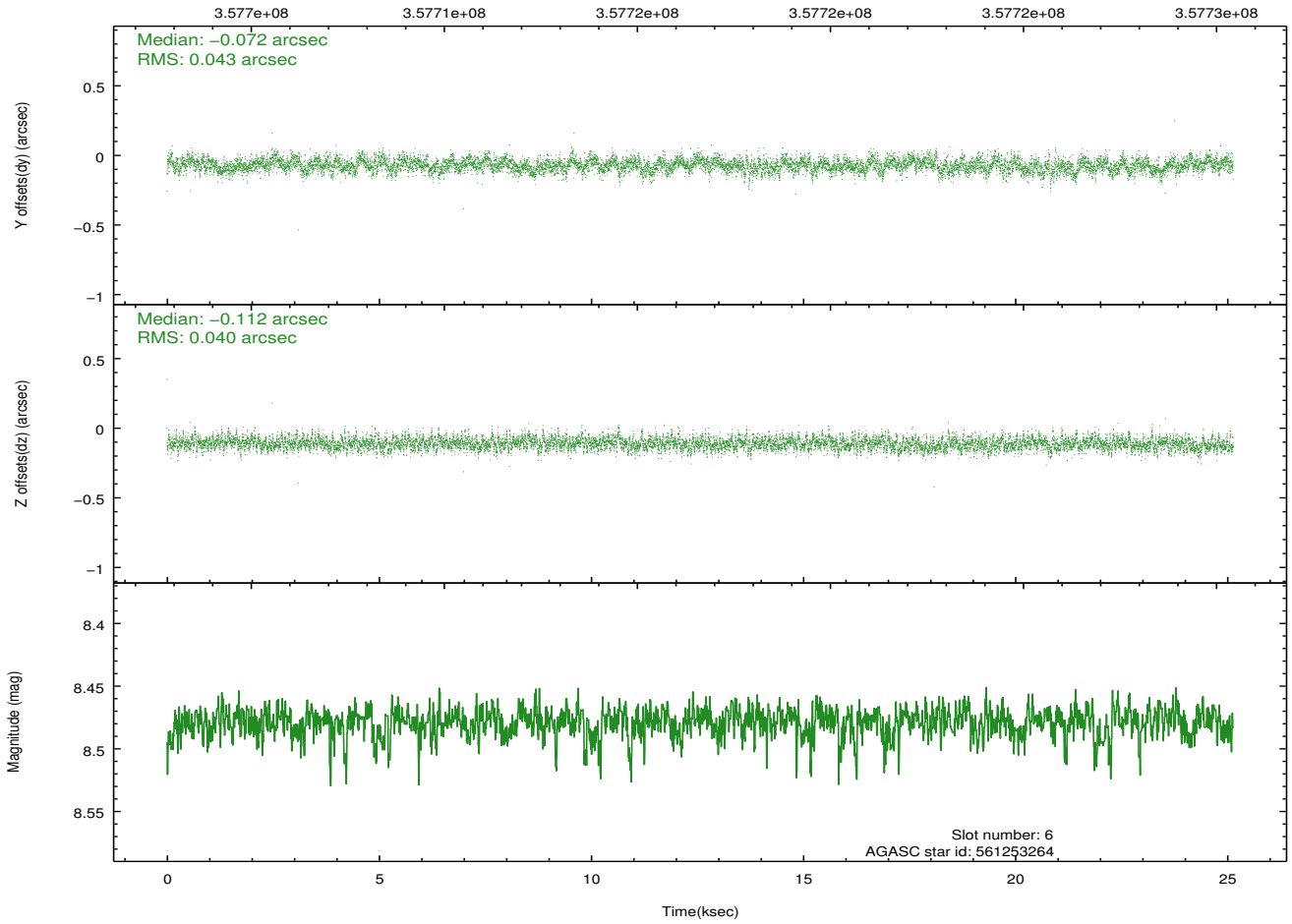
2.4.3 Slot 5



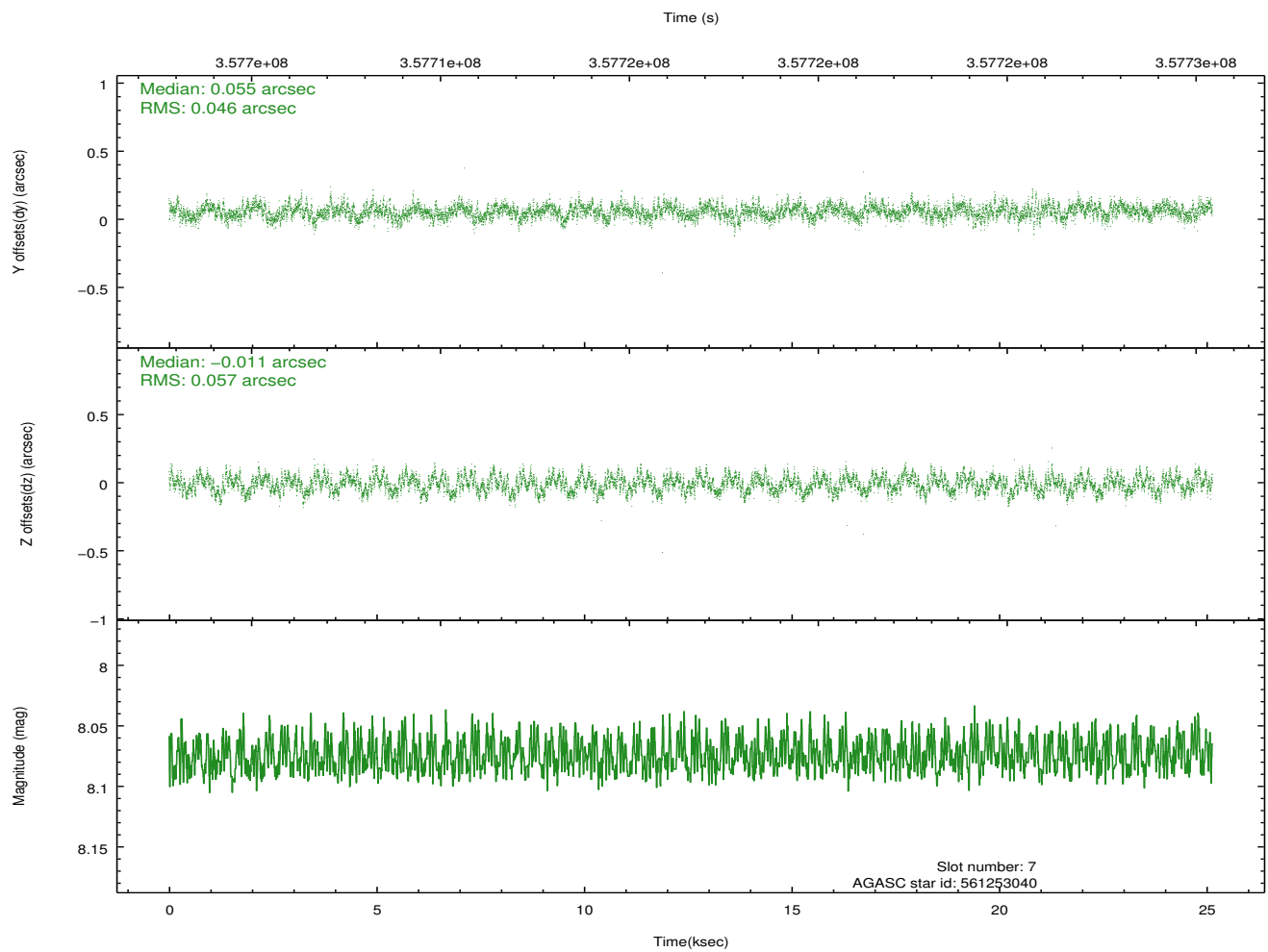
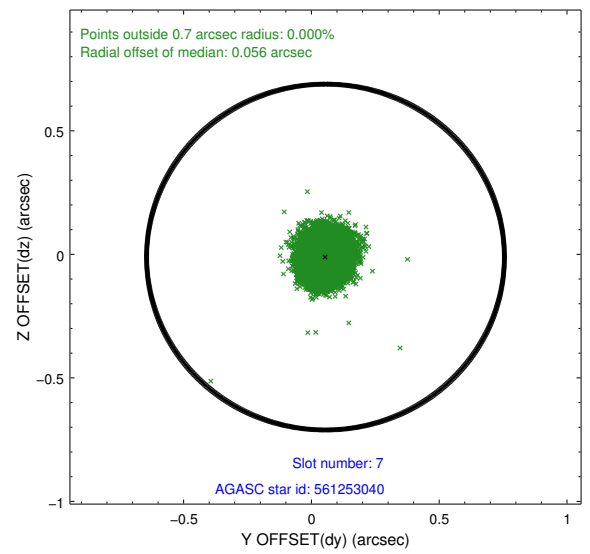
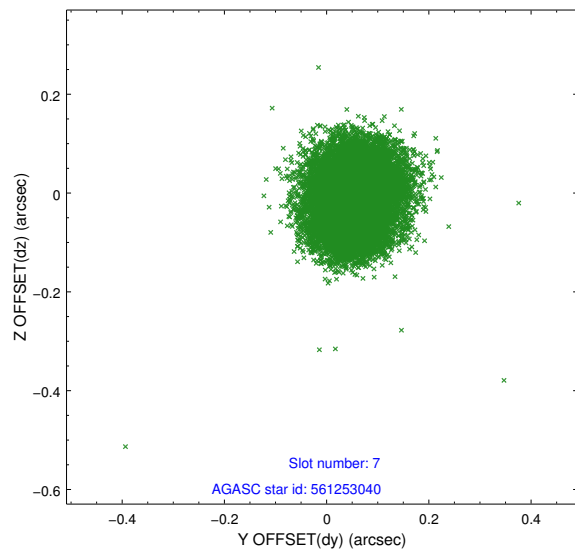
2.4.4 Slot 6



Time (s)

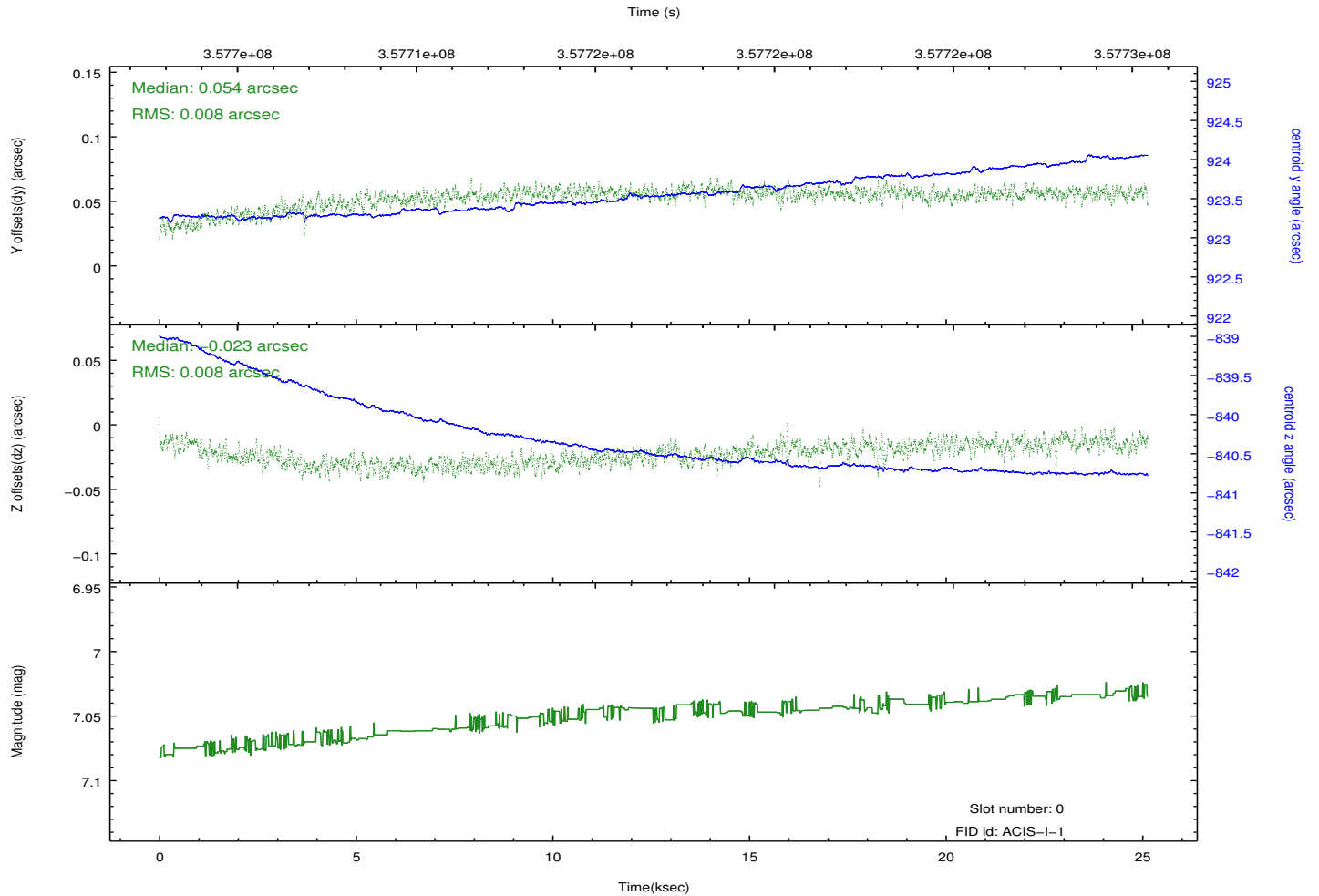
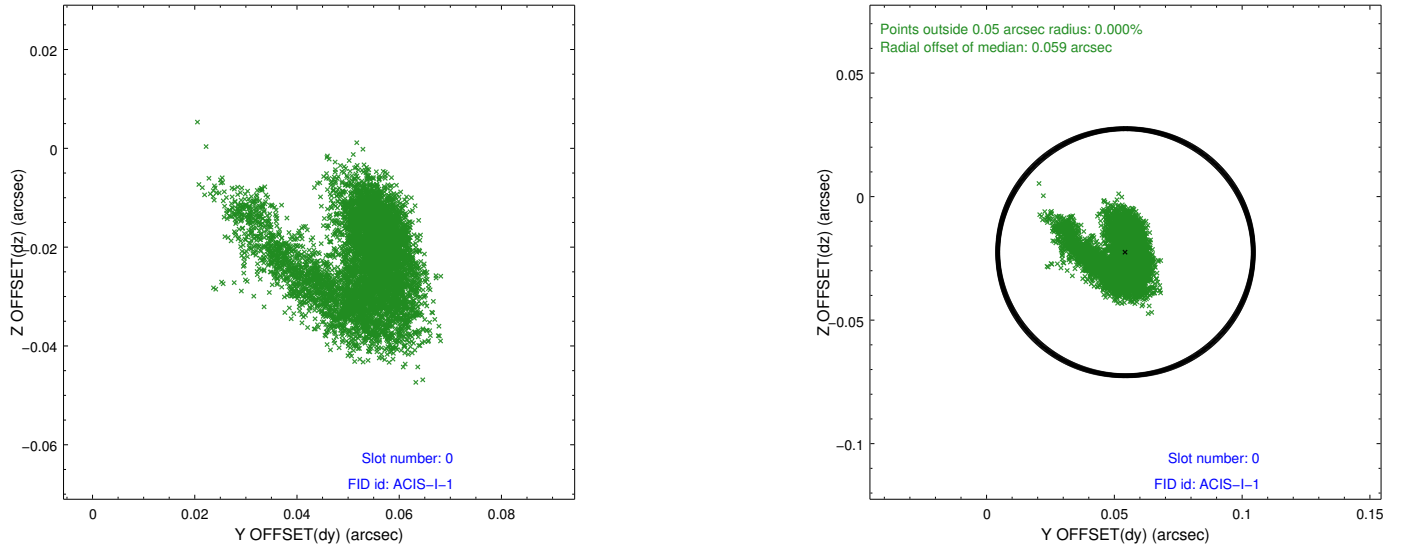


2.4.5 Slot 7

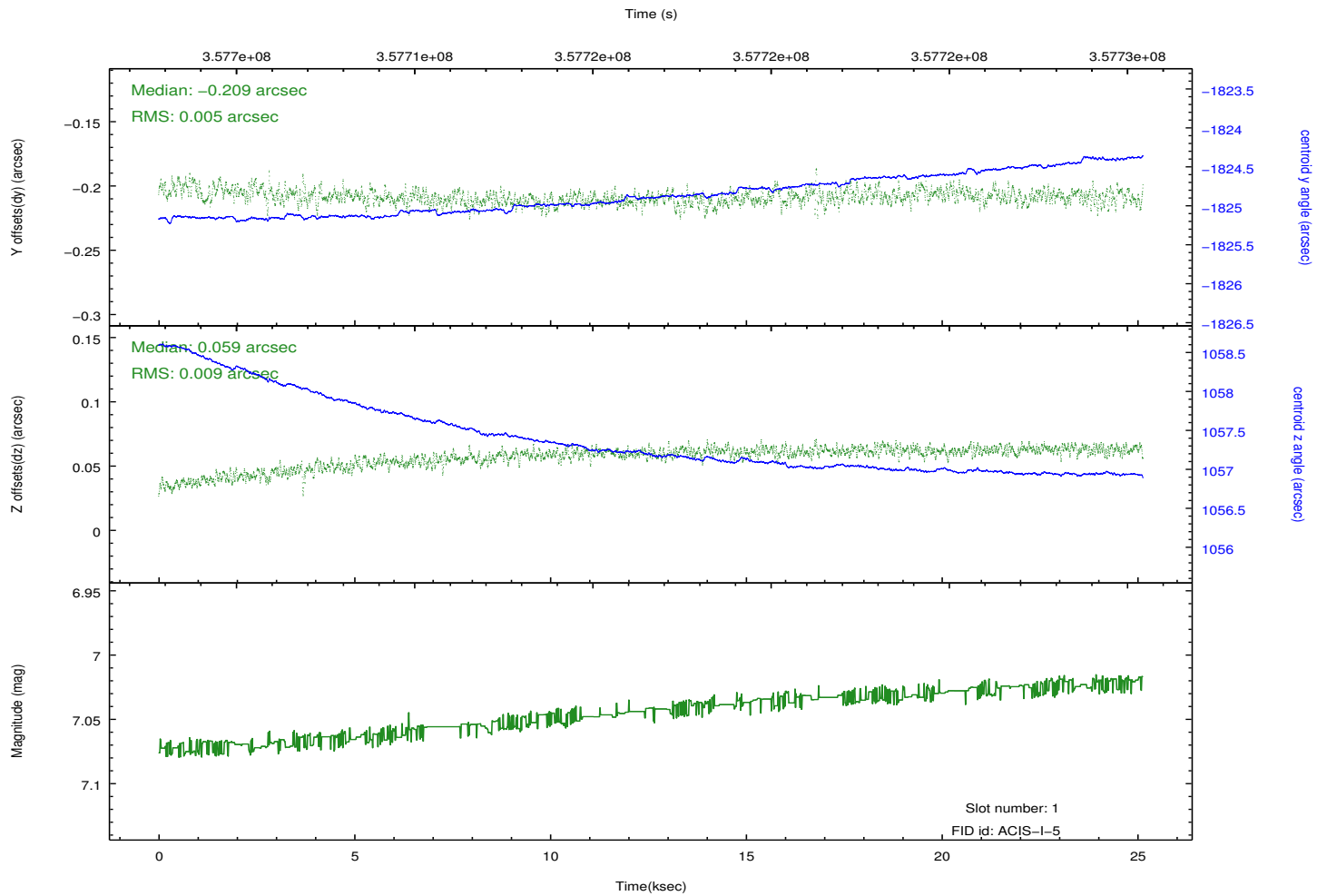
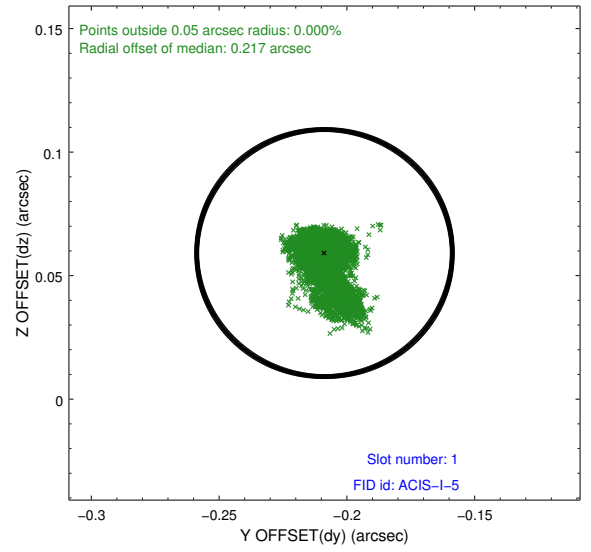
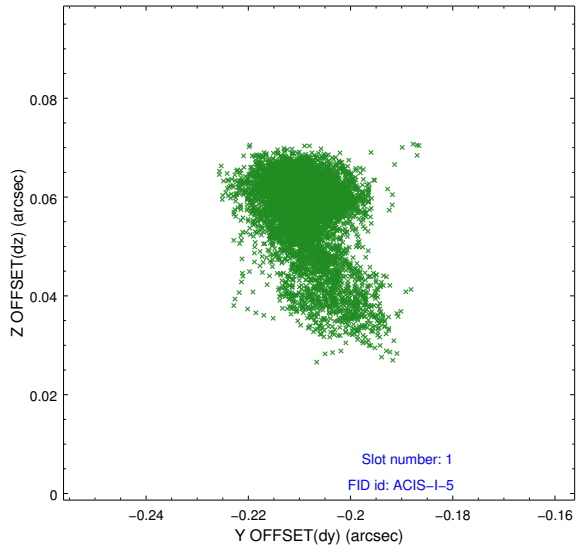


2.5 FID Slots

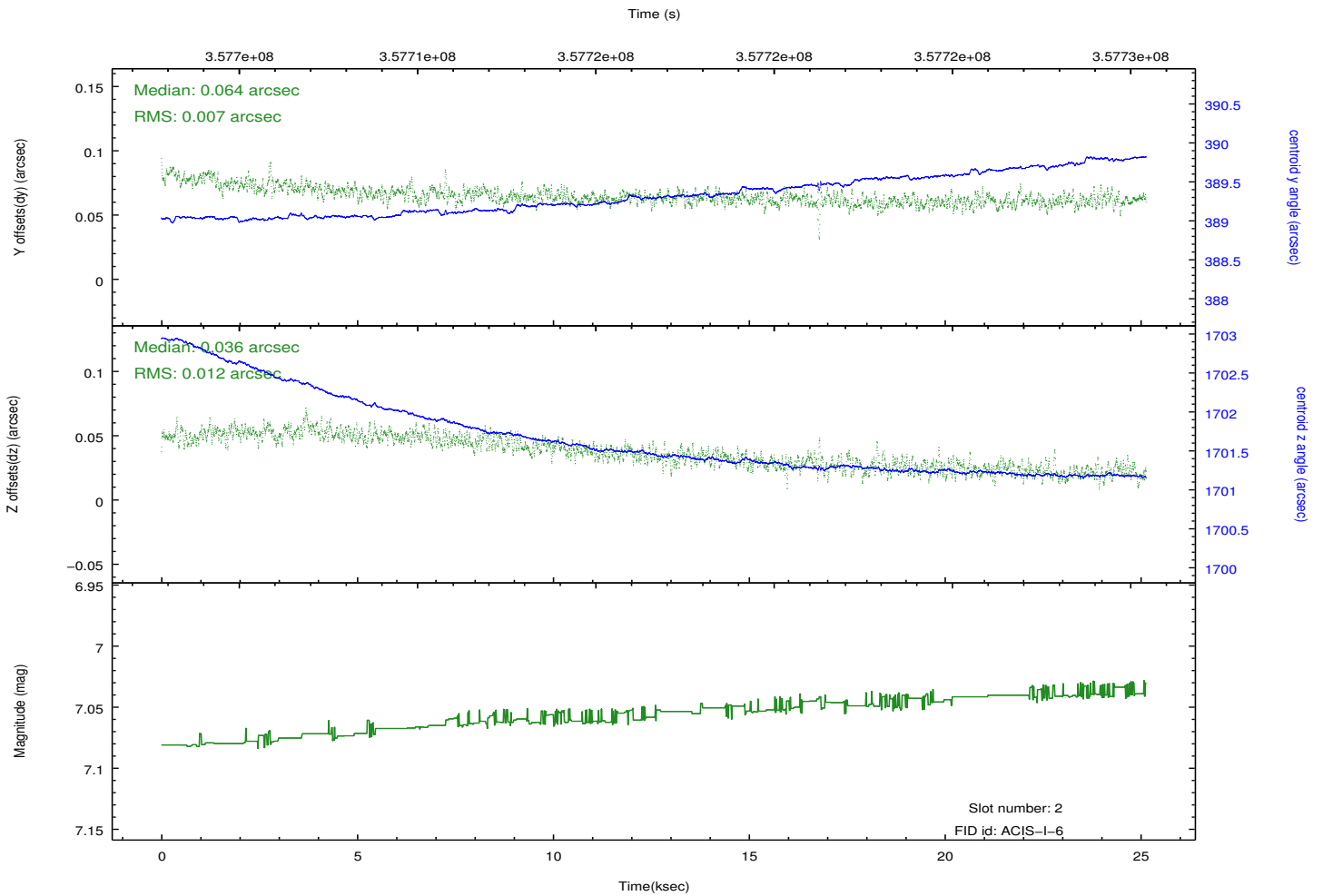
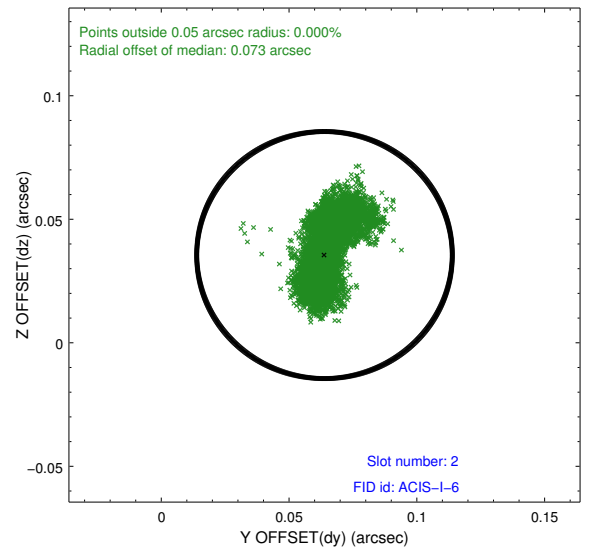
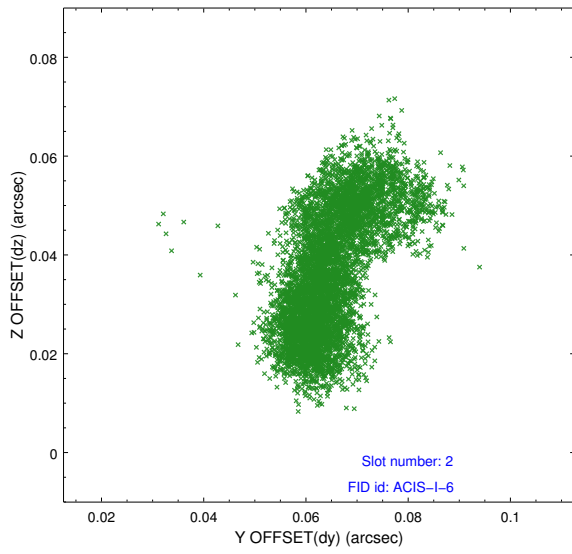
2.5.1 Slot 0



2.5.2 Slot 1



2.5.3 Slot 2



A Summary

A.1 Status

V&V Scientist	Beth Sundheim
V&V Date (YYYY-MM-DD)	2012.06.08
V&V Edition	1
V&V Disposition and Status	OK
V&V Charge Time	25.1327999

A.2 Comments