

V&V Reference Report

L2 ASCDS Version : 8.4.5

Observation 10882 - L2 Version 3
Chandra X-Ray Center

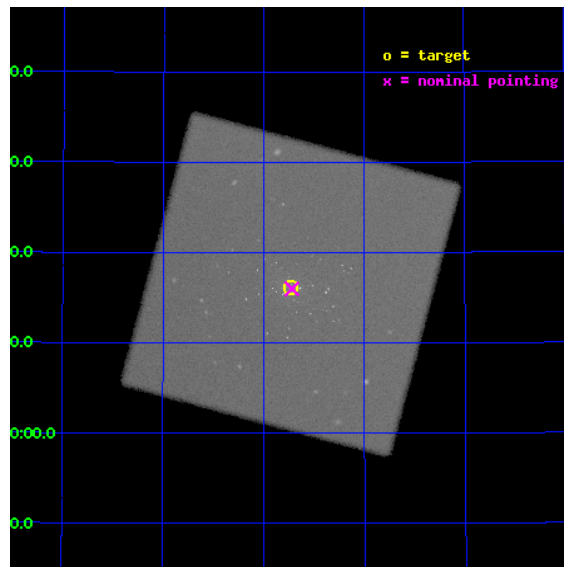
L2 Processing Date : Aug 13 2012

Contents

1	Front	2
2	OBI	3
2.1	OBI	3
2.1.1	Images	3
2.1.2	Parameters	4
2.1.3	Events	4
2.2	Compared Parameters	5
2.3	Aspect	6
2.4	Star Slots	9
2.4.1	Slot 3	9
2.4.2	Slot 4	10
2.4.3	Slot 5	11
2.4.4	Slot 6	12
2.4.5	Slot 7	13
2.5	FID Slots	14
2.5.1	Slot 0	14
2.5.2	Slot 1	15
2.5.3	Slot 2	16
A	Summary	17
A.1	Status	17
A.2	Comments	17

1 Front

seq_num	300259	Sequence number
obs_id	10882	Observation id
title	Resolving short supersoft source states of optical novae in the core of M31	Proposal title
observer	Dr. Wolfgang Pietsch	Principal investigator
object	M31	Source name
ra_targ	10.684583	Observer's specified target RA [deg]
dec_targ	41.269278	Observer's specified target Dec [deg]
ra_nom	10.680101028279	Nominal RA [deg]
dec_nom	41.26661245858	Nominal Dec [deg]
roll_nom	239.90747222951	Nominal Roll [deg]
revision	3	Processing version of data
ontime	19080.119711459	[s]
livetime	18845.904526161	Ontime multiplied by DTCOR
l2events	1500385	Number of level 2 events

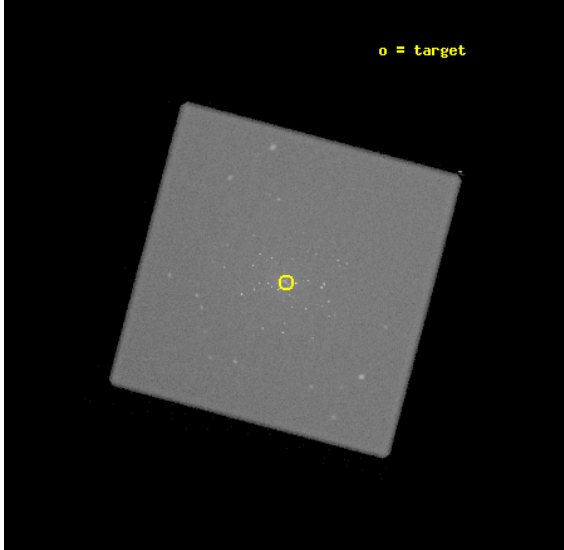


2 OBI

2.1 OBI

2.1.1 Images

Level 1 Image



Level 1 Bad Events



2.1.2 Parameters

obi_num	0	Obi number	sched_exp_time	18900.000000	[s] Scheduled observation exposure time
ascdsver	8.4.5	Processing system revision	ontime	19080.119711459	[s]
caldbver	4.5.1.1	 	l1events	2239520	Number of level 1 events
date	2012-08-13T17:31:01	Date and time of file creation			
revision	3	Processing version of data			

2.1.3 Events

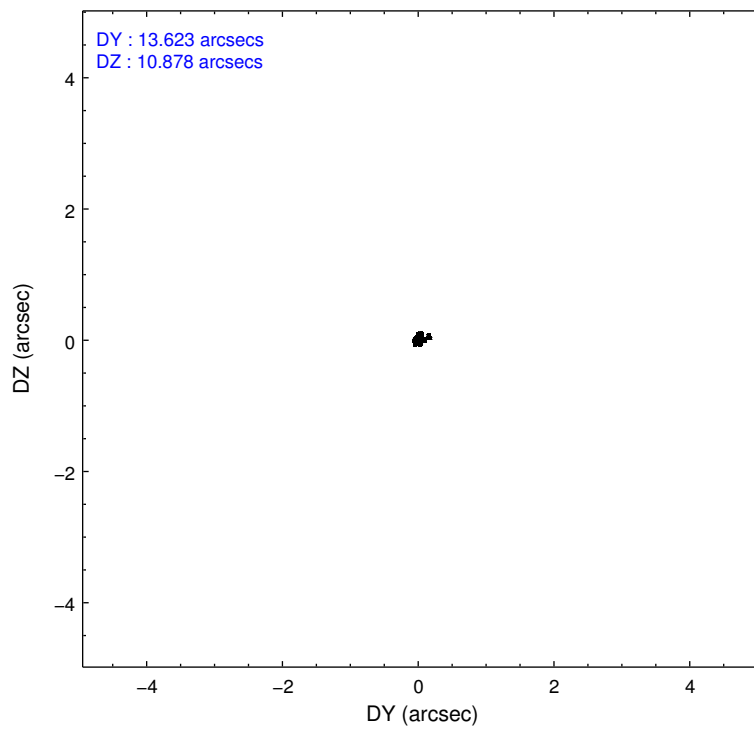
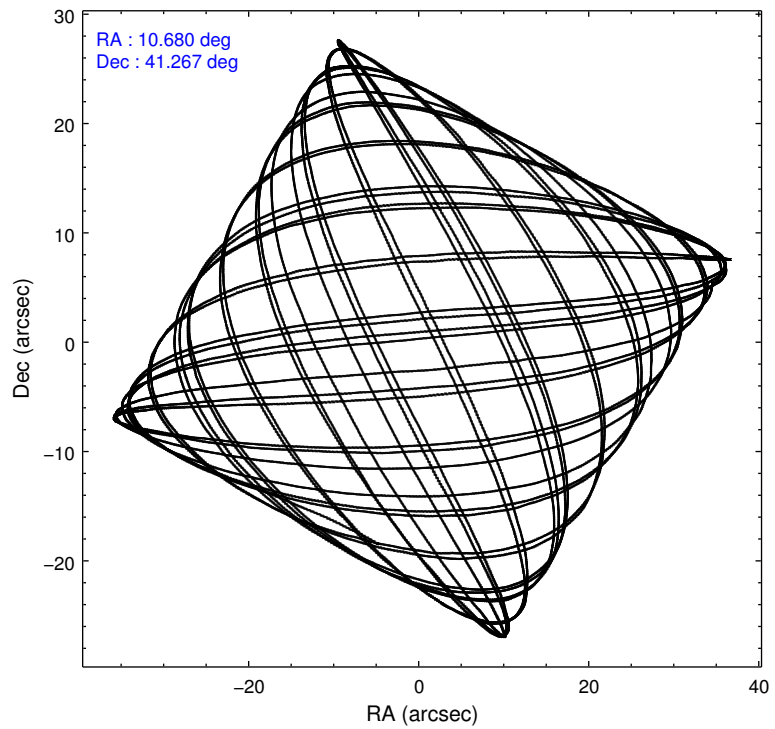
Level 1 Events

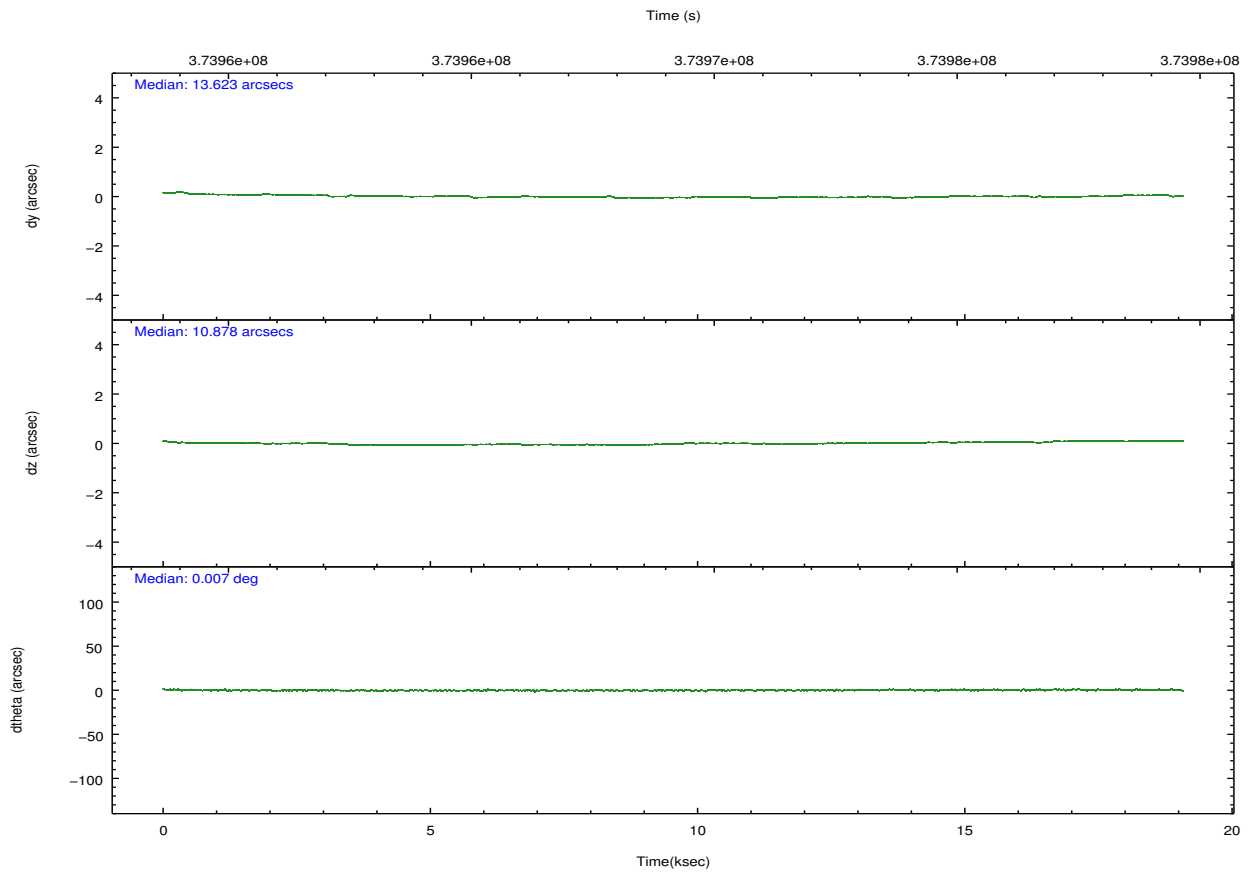
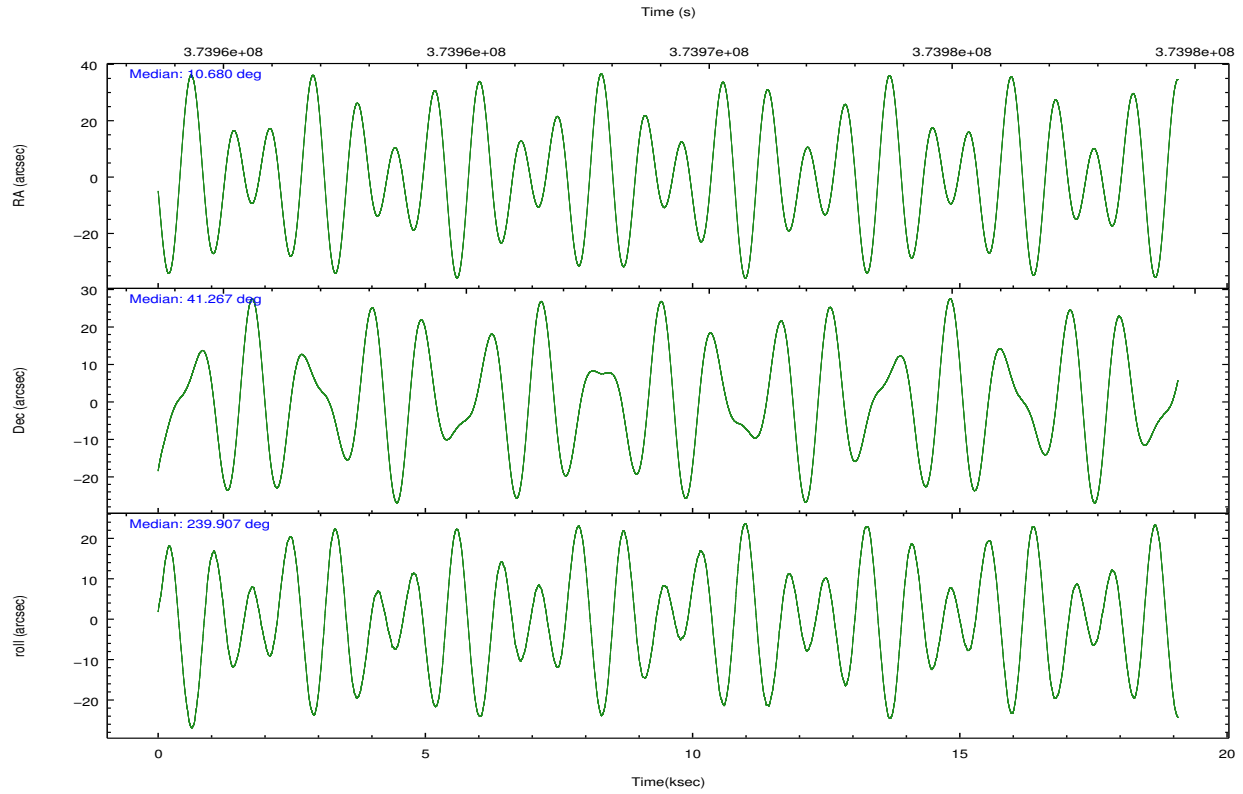
	segment 0
level 1 events	2239520
rejected events	89279
rejected %	3%

2.2 Compared Parameters

Parameter	Planned	Actual	Parameter	Planned	Actual
Instrument	HRC	HRC	Obspar format version number	7	7
Detector	HRC-I	HRC-I	Obspar file type	PREDICTED	ACTUAL
Grating	NONE	NONE	Obspar update status	NONE	UPDATED
Data mode	OBSERVING	OBSERVING			
Observation mode	POINTING	POINTING			
[deg] Pointing RA	10.679387	10.68010102827903			
[deg] Pointing Dec	41.293856	41.26661245857967			
[deg] Pointing Roll	240.003429	239.9074722295147			
[s] Window start time (MET)	373939266.184000	373939266.184000			
[s] Window stop time (MET)	374198406.184000	374198406.184000			
[mm] SIM focus pos	-1.040293	-1.038866356238299			
[mm] SIM defocus	0	0.001426264420575141			
[mm] SIM translation stage pos	126.985494	126.9829799899862			
[mm] SIM translation stage offset	0	0.002508901615314585			
[s] Observation start time (MET)	373959796.184000	373958854.42286			
Observation start date	2009-11-07T05:42:10	2009-11-07T05:27:34			
[s] Observation end time (MET)	373978696.184000	373979661.92391			
Observation end date	2009-11-07T10:57:10	2009-11-07T11:14:21			

2.3 Aspect



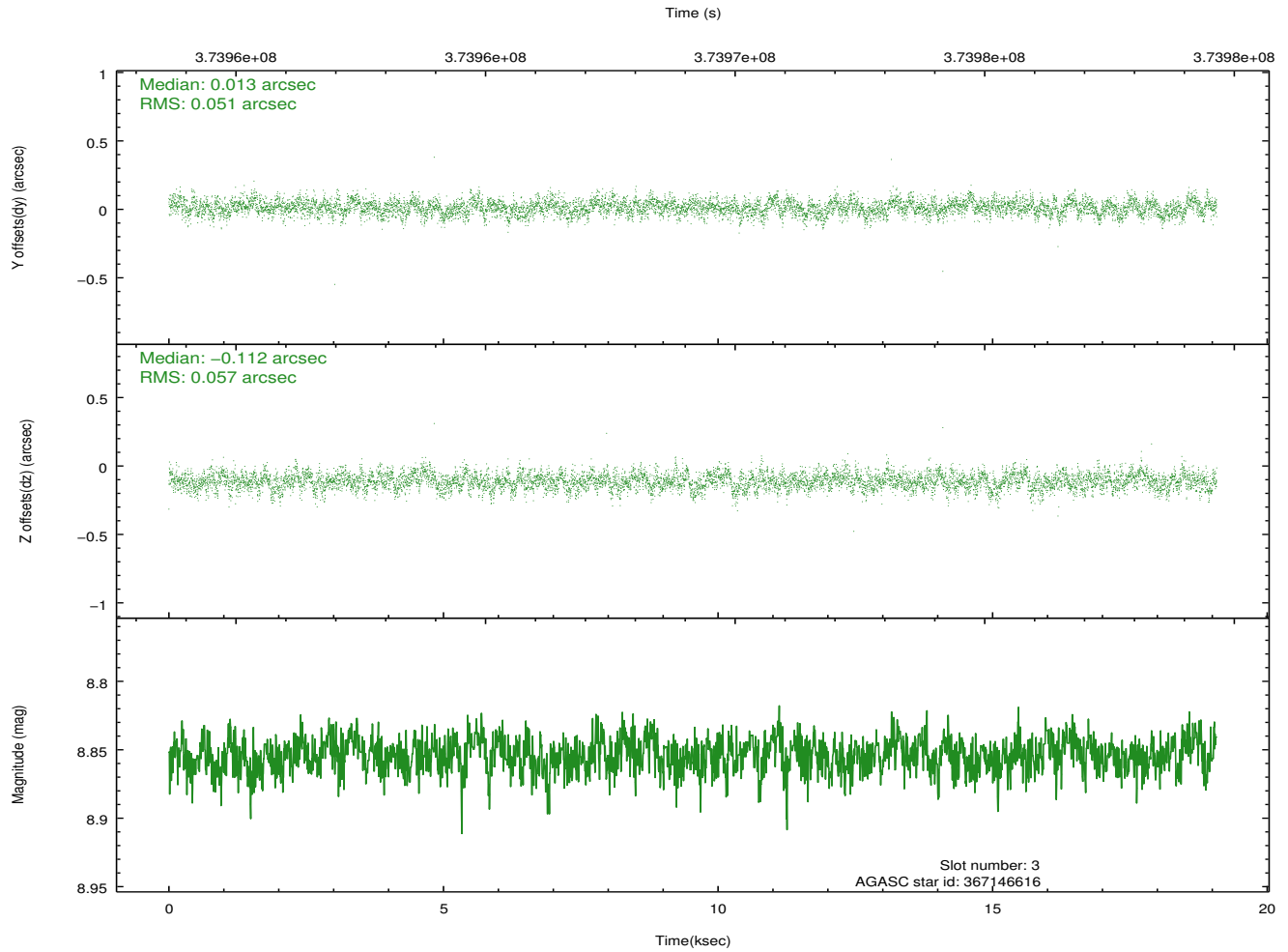
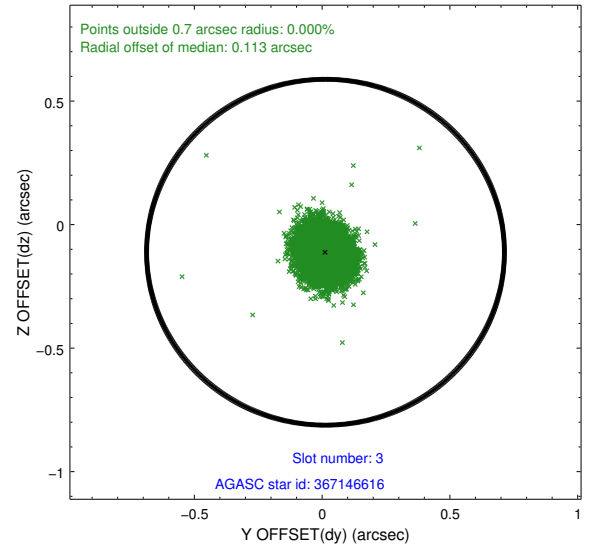
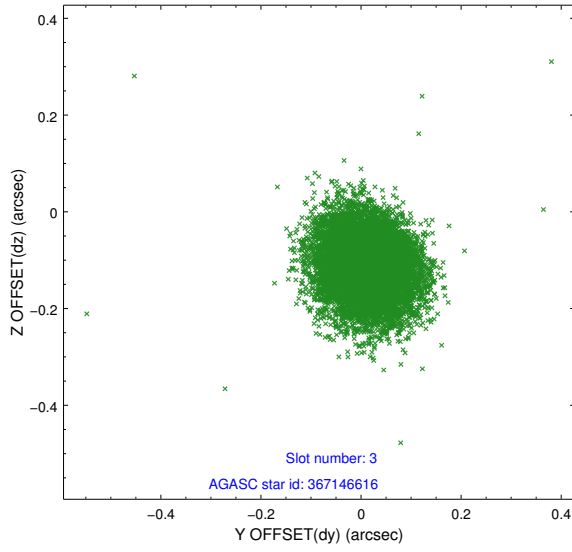


Slot Statistics

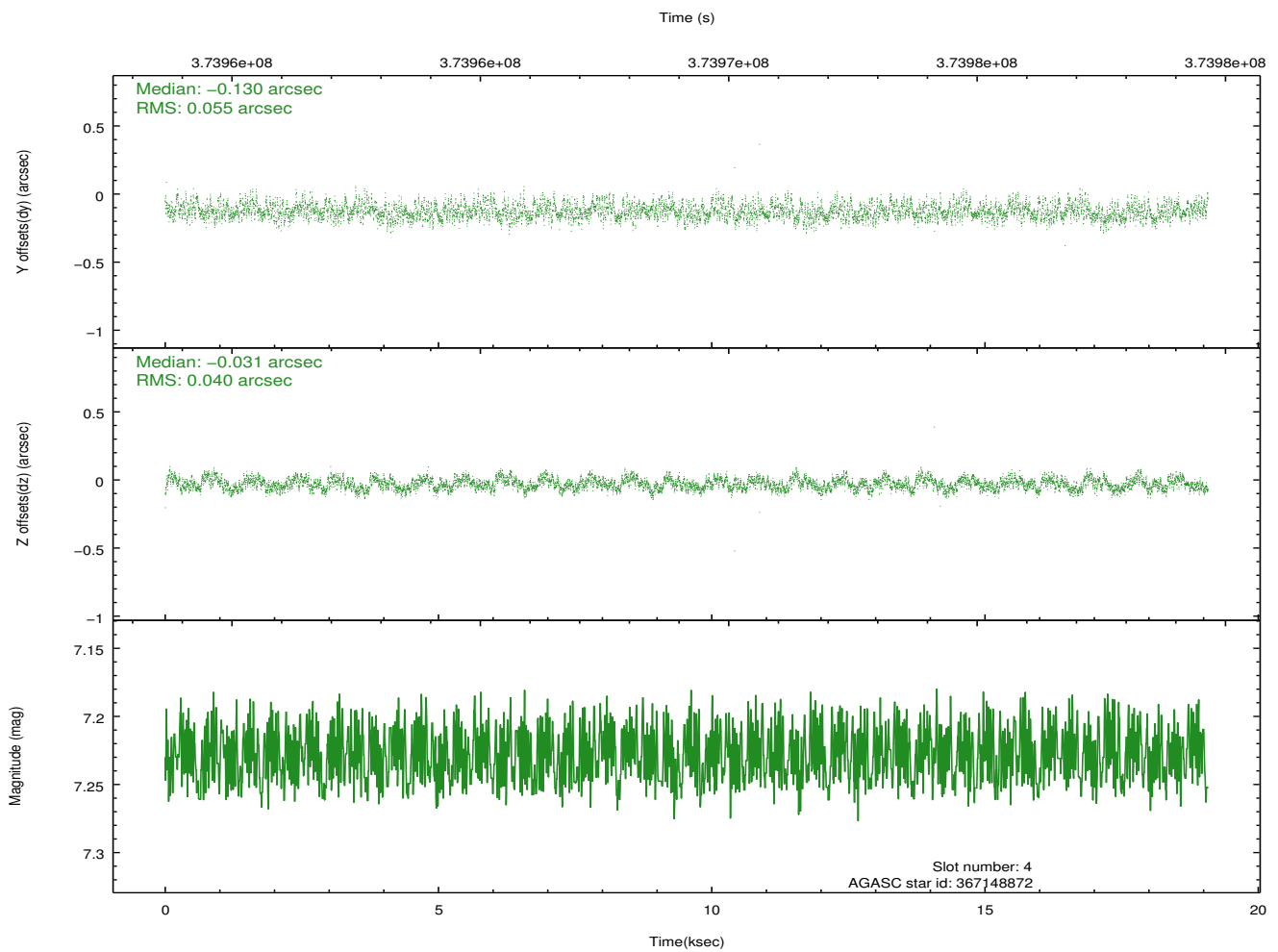
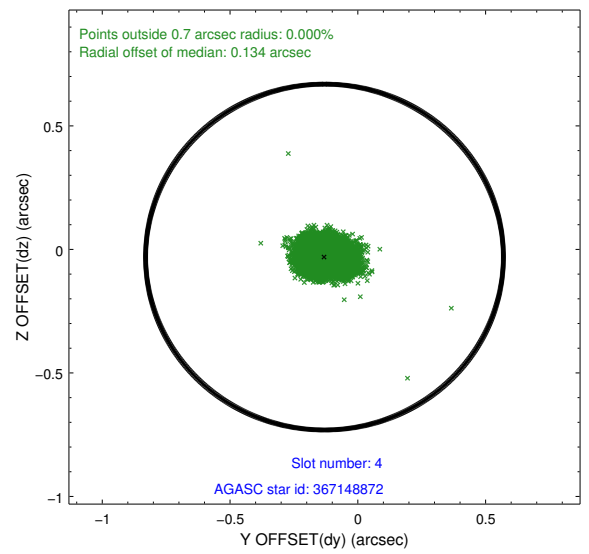
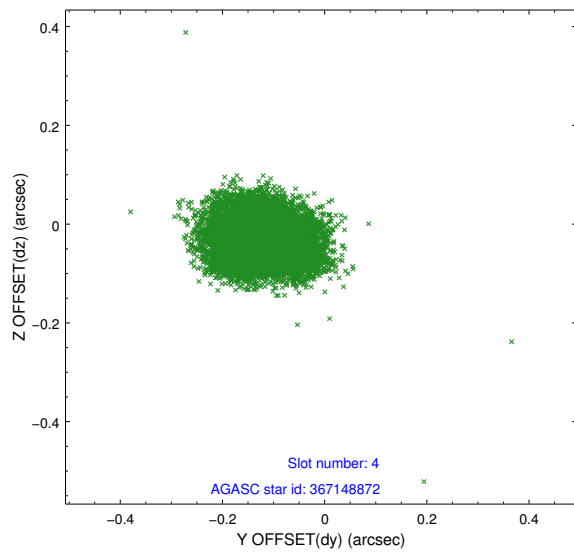
slot	status	id	mag	n_pts	med_dy	med_dz	dr1	dr2	ra	dec	mean_y	mean_z
0	FID	HRC-I-2	6.98	4654	0.105	-0.079	0.006	0.011	0.000000	0.000000	843.38	-1300.47
1	FID	HRC-I-3	7.04	4654	-0.126	0.040	0.006	0.011	0.000000	0.000000	-1197.85	1005.45
2	FID	HRC-I-4	6.96	4652	0.140	-0.048	0.006	0.011	0.000000	0.000000	1273.25	1003.53
3	GUIDE	367146616	8.85	9302	0.013	-0.112	0.080	0.131	11.418645	41.190163	-685.45	1916.92
4	GUIDE	367148872	7.23	9307	-0.130	-0.031	0.072	0.116	10.505940	40.688258	2124.75	680.32
5	GUIDE	367663272	9.29	9249	-0.000	0.126	0.106	0.172	10.656279	41.699429	-1232.56	-783.83
6	GUIDE	367674552	8.85	9306	0.019	-0.078	0.083	0.133	11.016238	41.570845	-1318.88	286.51
7	GUIDE	367139648	8.19	9306	0.098	0.094	0.069	0.110	11.021290	40.433909	2211.11	2359.06

2.4 Star Slots

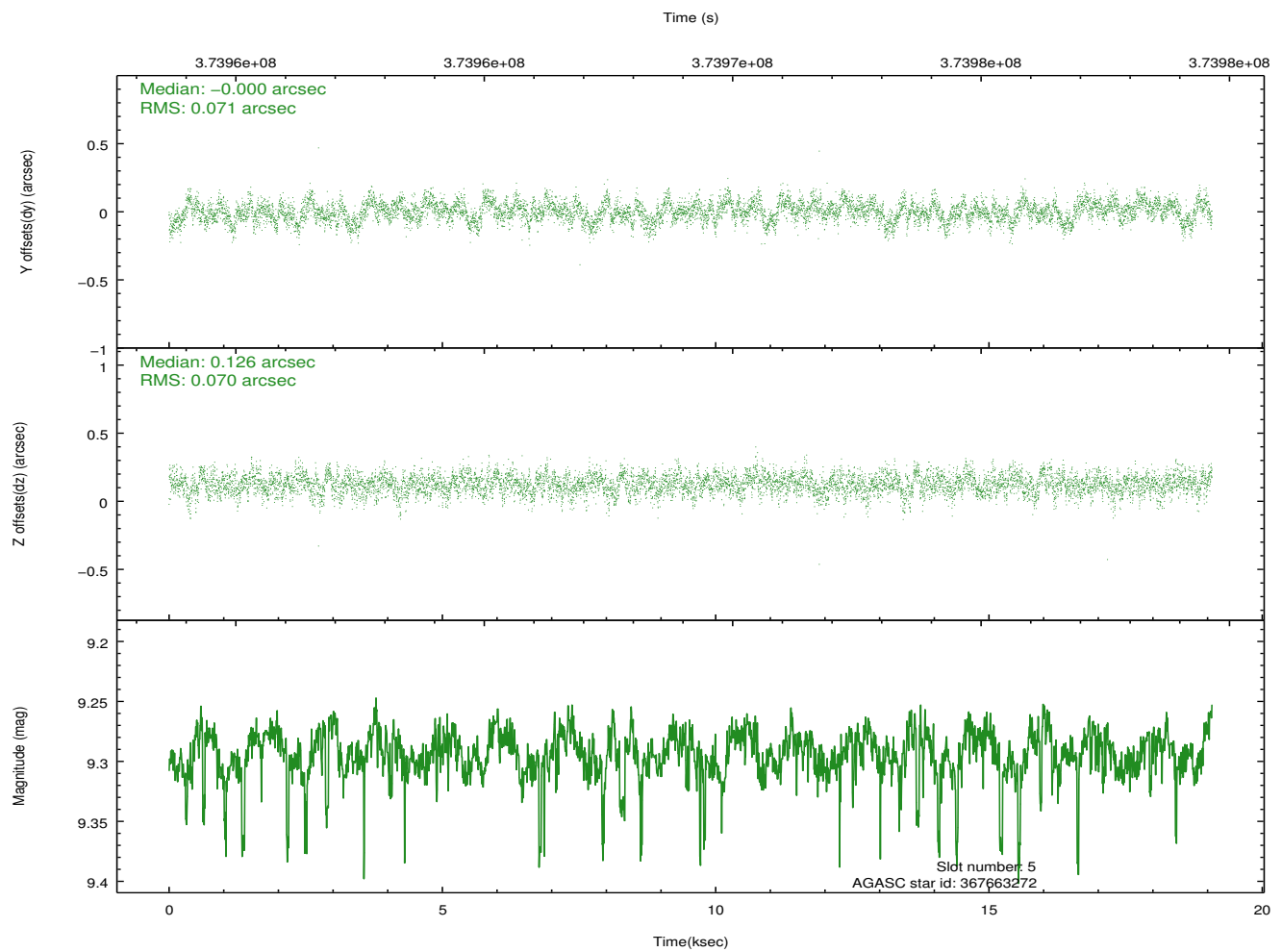
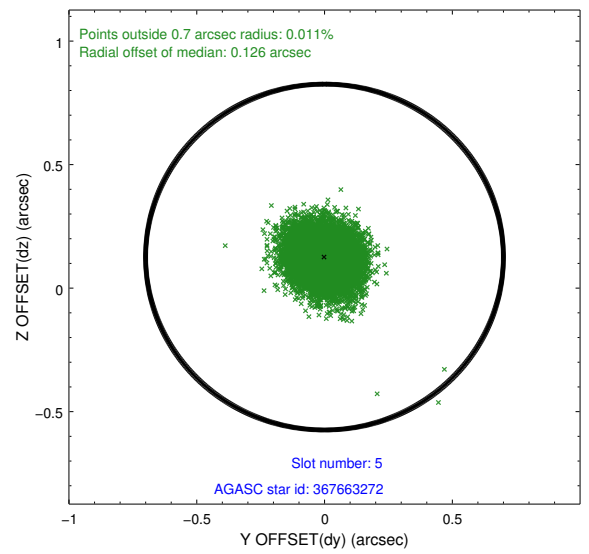
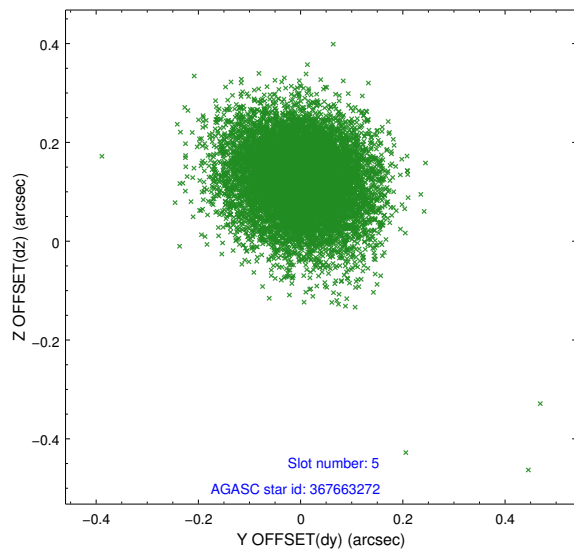
2.4.1 Slot 3



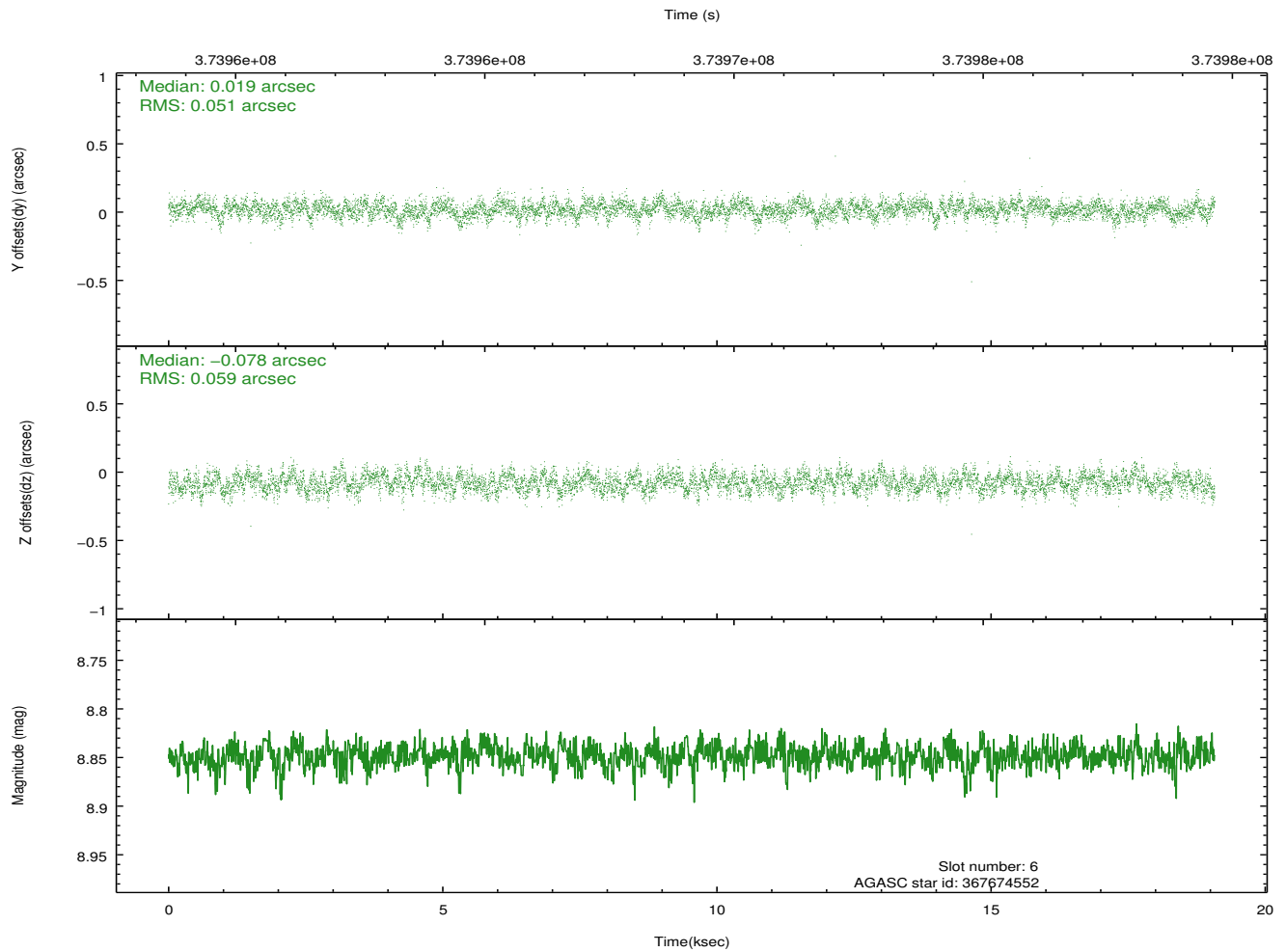
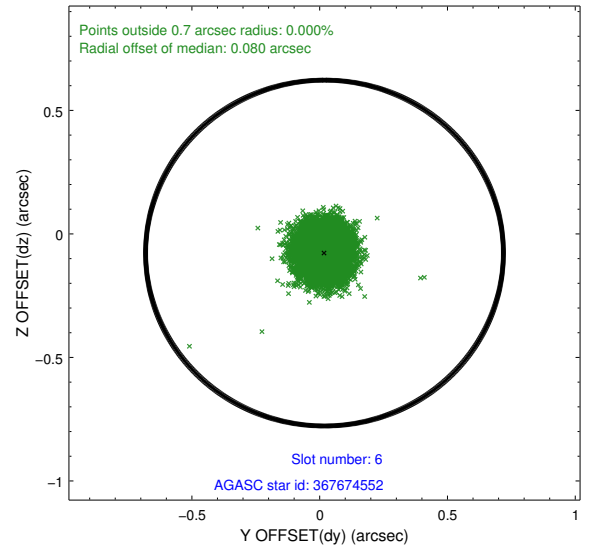
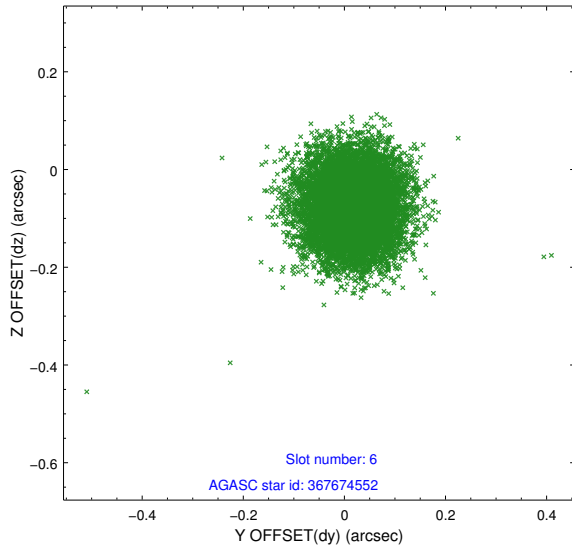
2.4.2 Slot 4



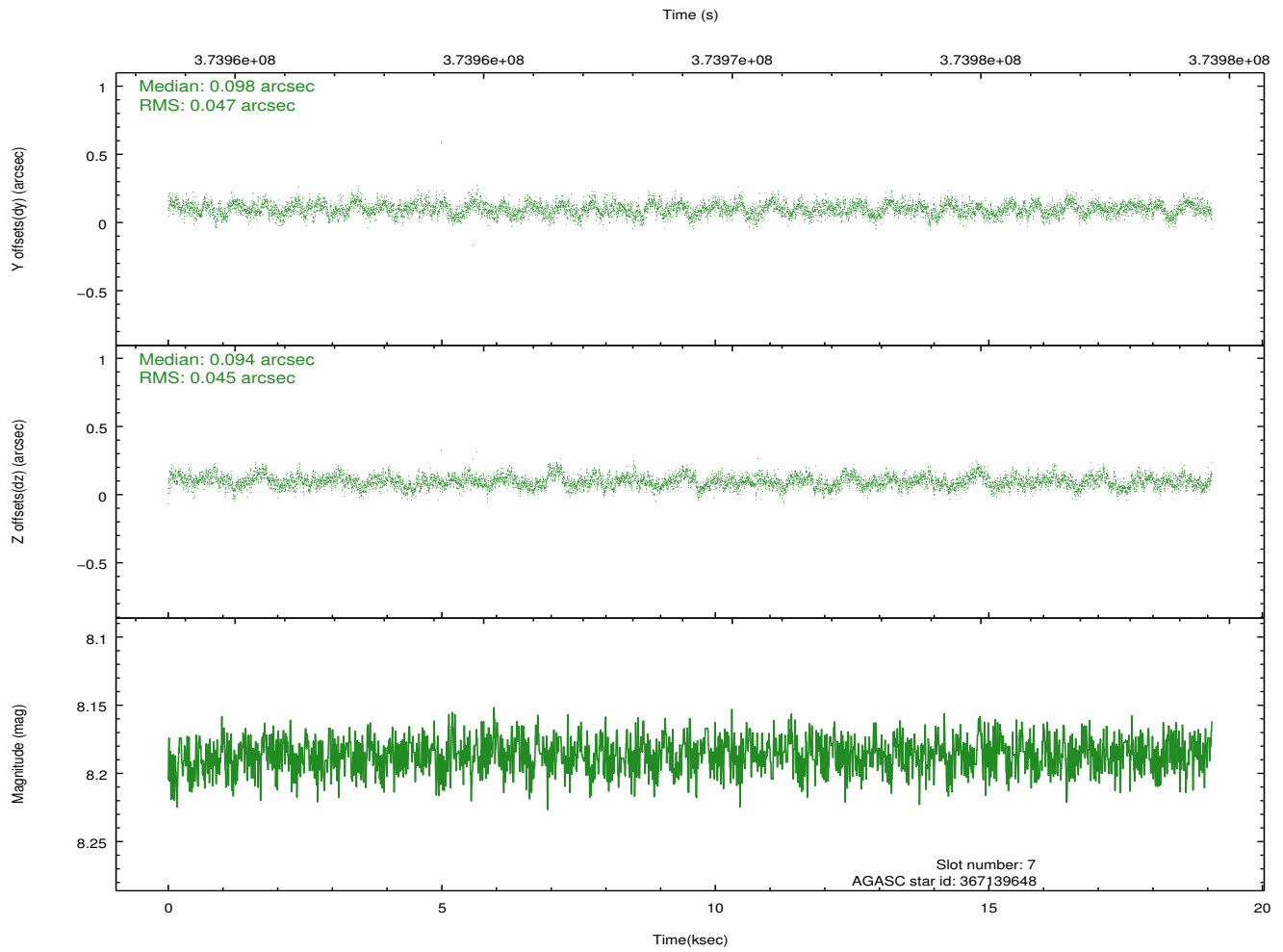
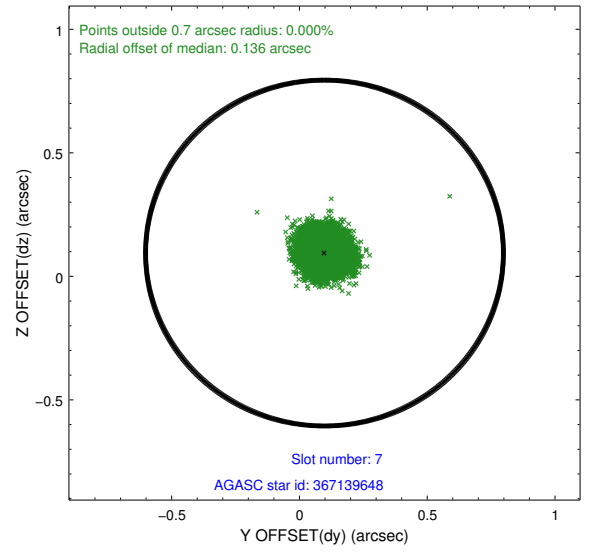
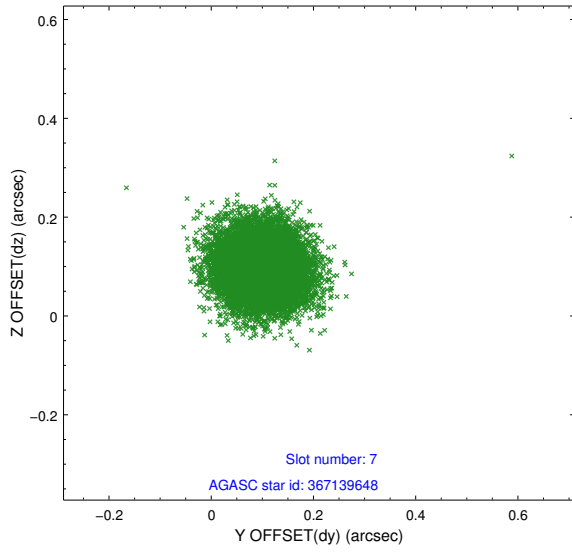
2.4.3 Slot 5



2.4.4 Slot 6

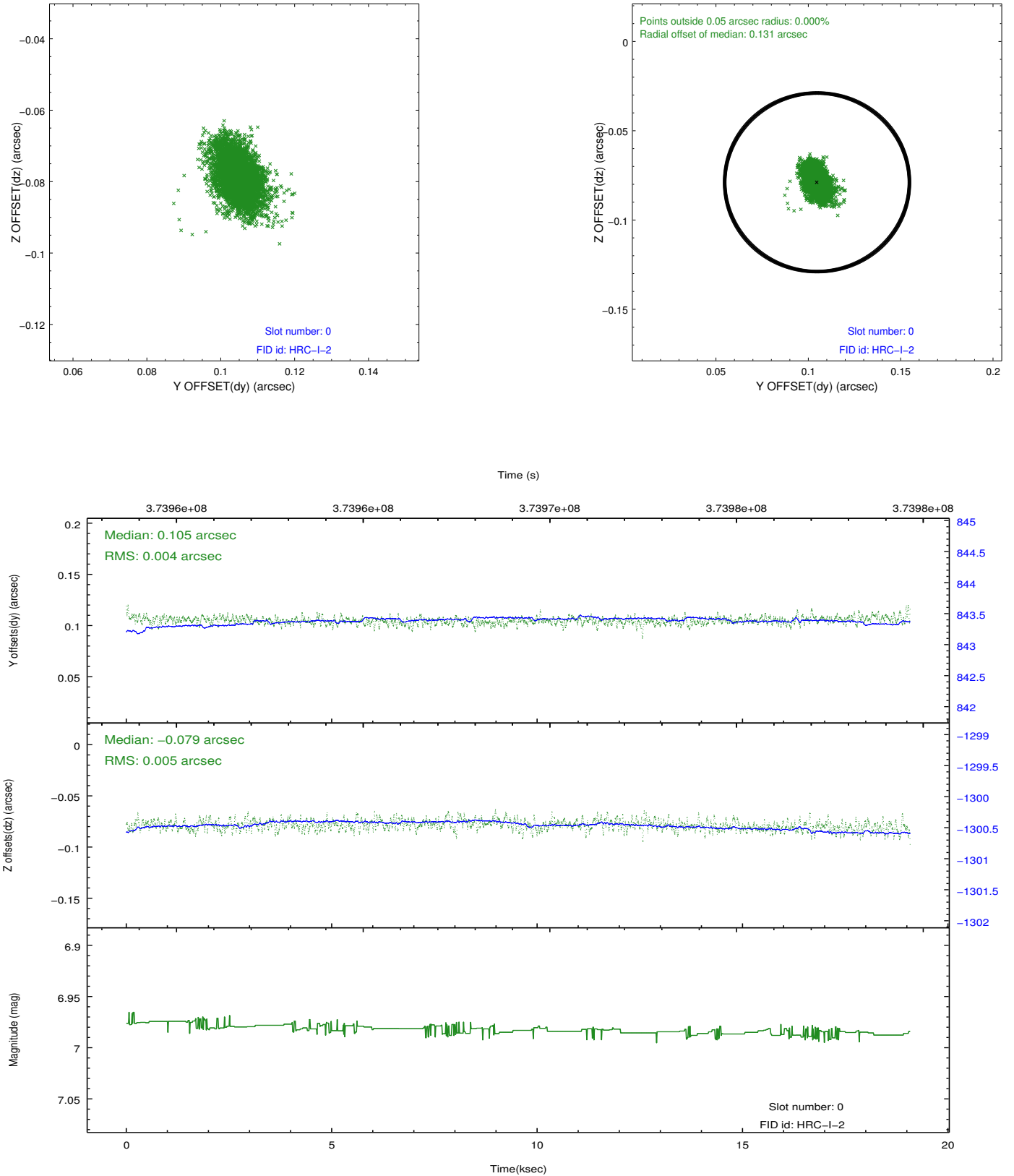


2.4.5 Slot 7

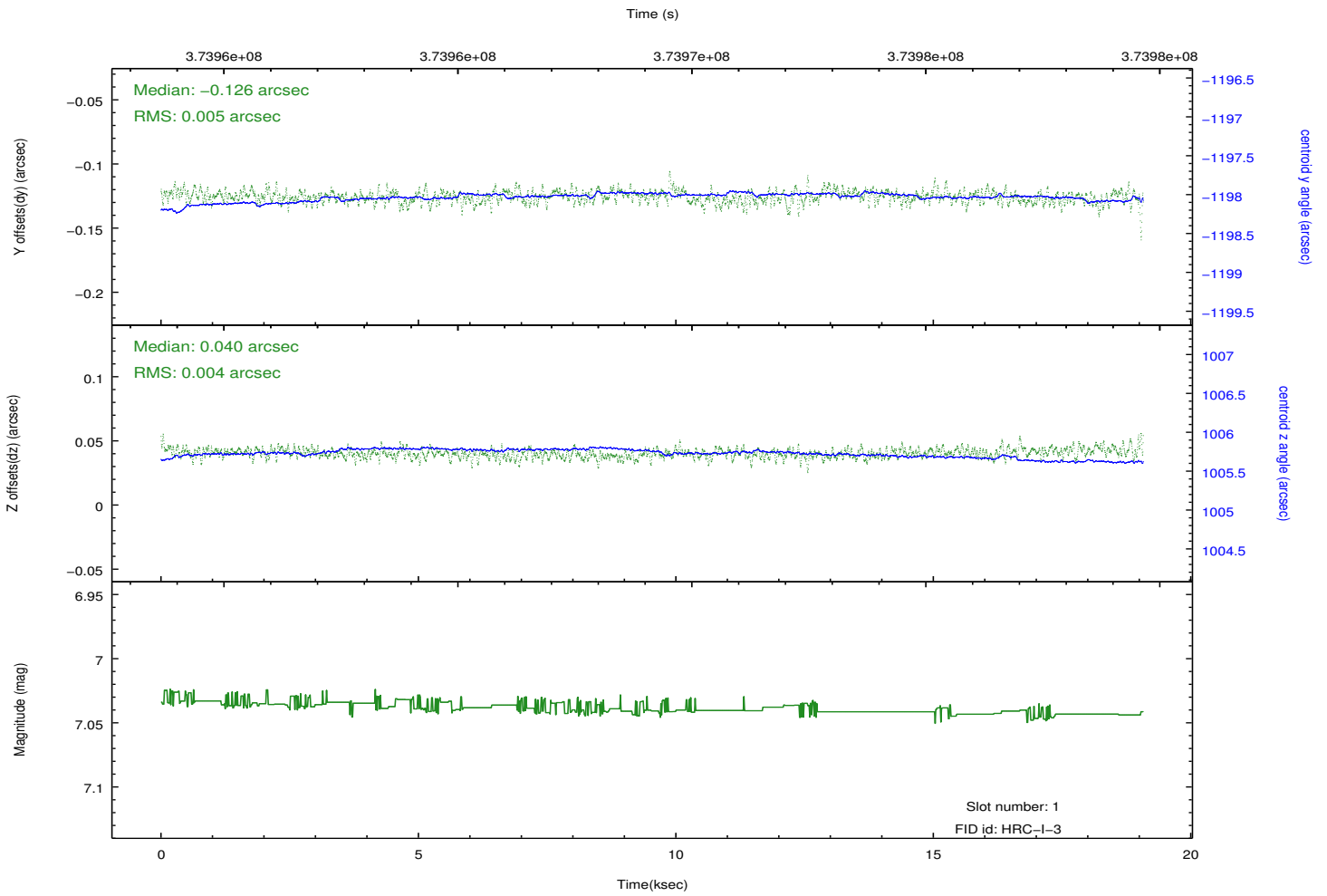
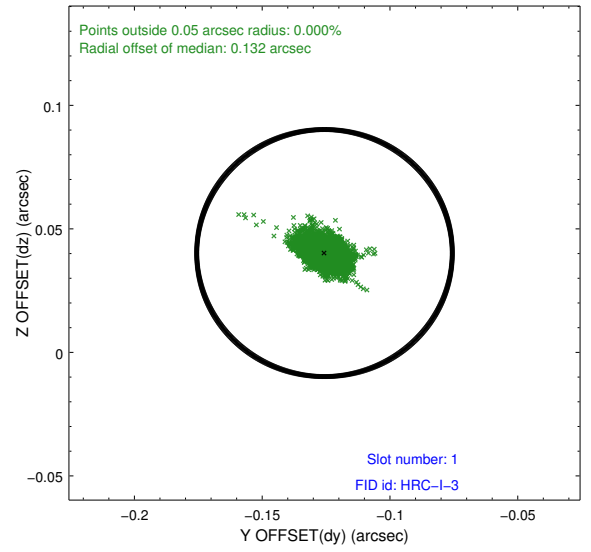
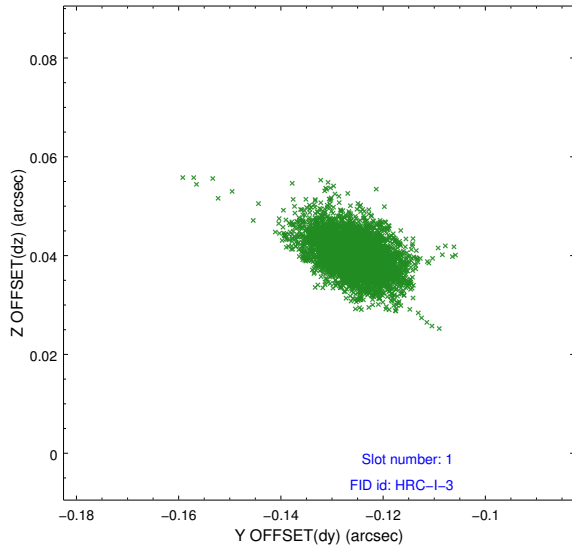


2.5 FID Slots

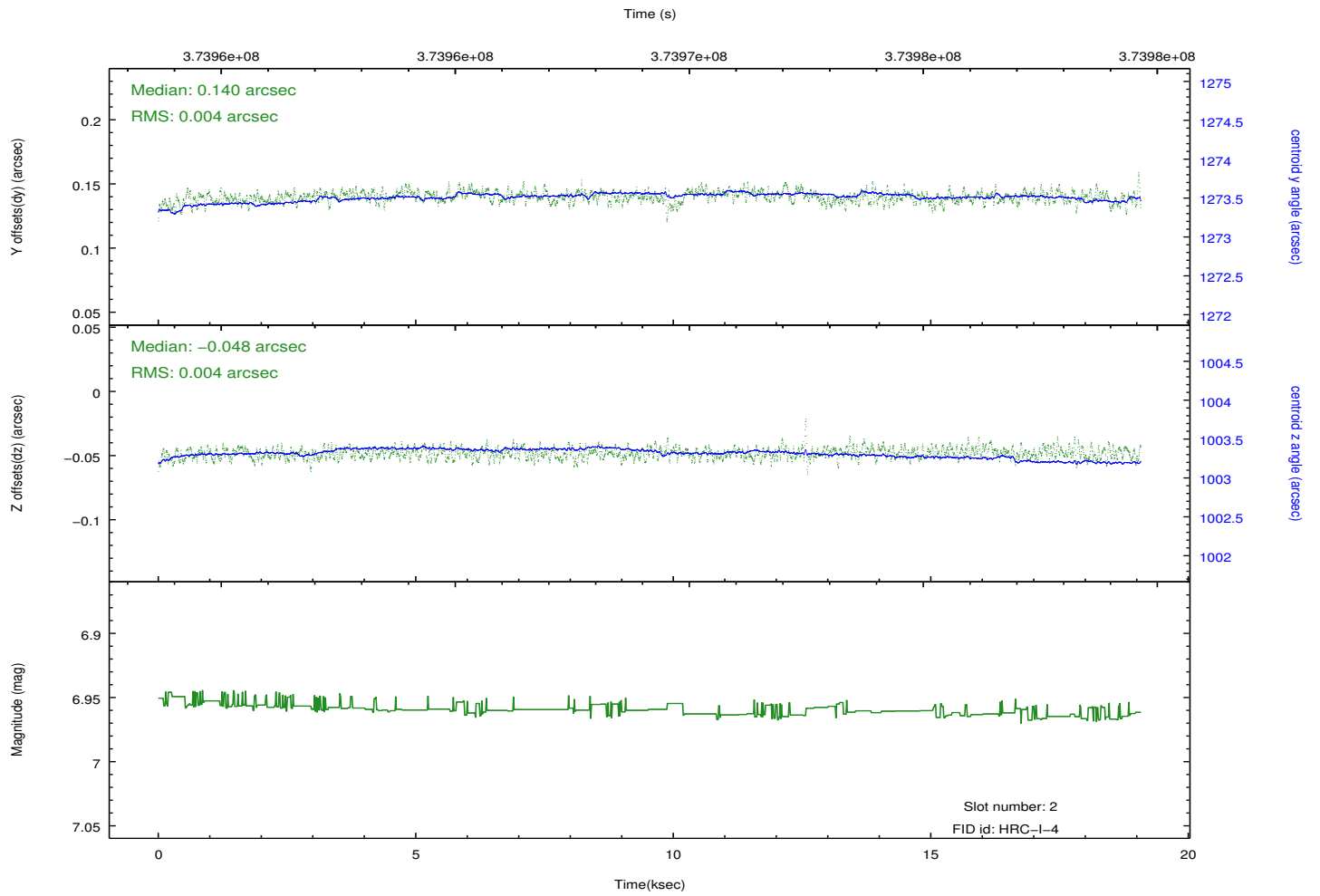
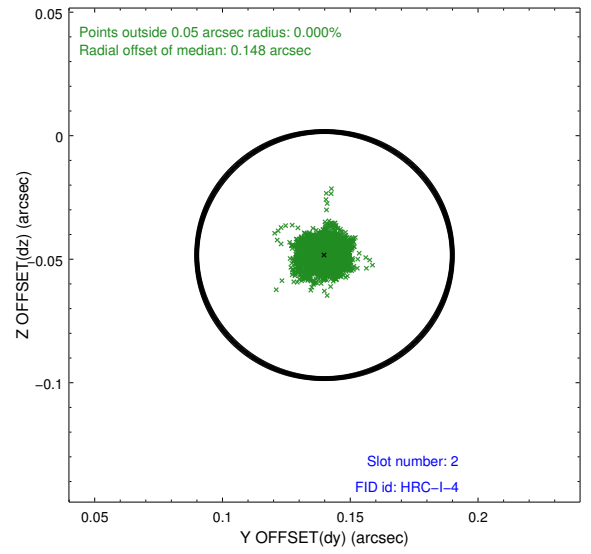
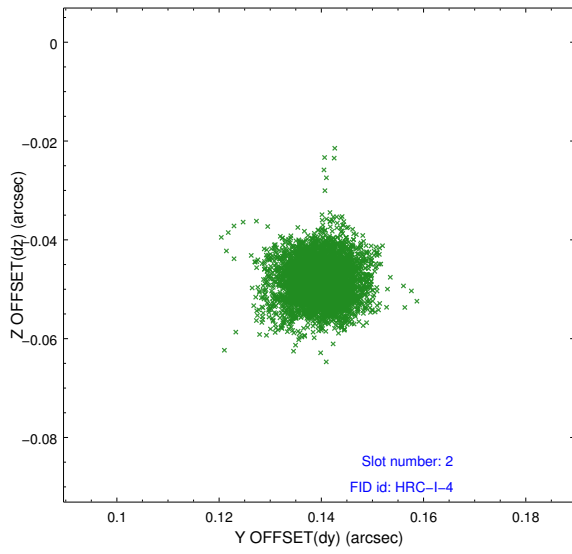
2.5.1 Slot 0



2.5.2 Slot 1



2.5.3 Slot 2



A Summary

A.1 Status

V&V Scientist	Jen Lauer
V&V Date (YYYY-MM-DD)	2012.08.22
V&V Edition	1
V&V Disposition and Status	OK
V&V Charge Time	19.080375961602

A.2 Comments

Joint proposal with XMM. Time constraint met.