

V&V Reference Report

L2 ASCDS Version : 8.4.5

Observation 10912 - L2 Version 2
Chandra X-Ray Center

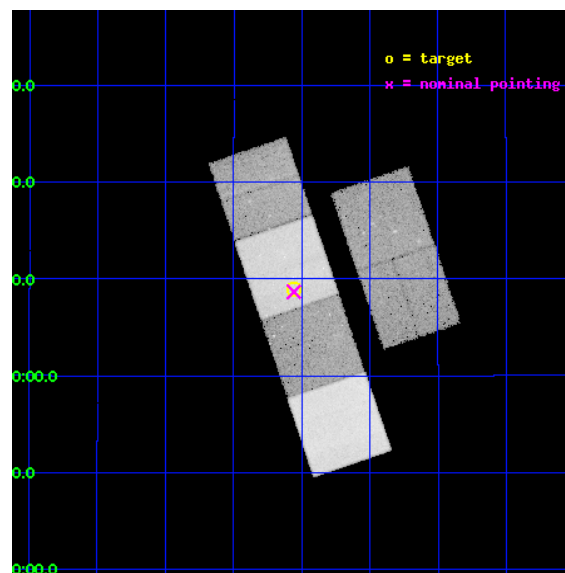
L2 Processing Date : Jun 7 2012

Contents

1	Front	2
2	OBI	3
2.1	OBI	3
2.1.1	Images	3
2.1.2	Bias	3
2.1.3	Parameters	4
2.1.4	Events	4
2.2	Compared Parameters	5
2.3	Aspect	6
2.4	Star Slots	9
2.4.1	Slot 3	9
2.4.2	Slot 4	10
2.4.3	Slot 5	11
2.4.4	Slot 6	12
2.4.5	Slot 7	13
2.5	FID Slots	14
2.5.1	Slot 0	14
2.5.2	Slot 1	15
2.5.3	Slot 2	16
A	Summary	17
A.1	Status	17
A.2	Comments	17

1 Front

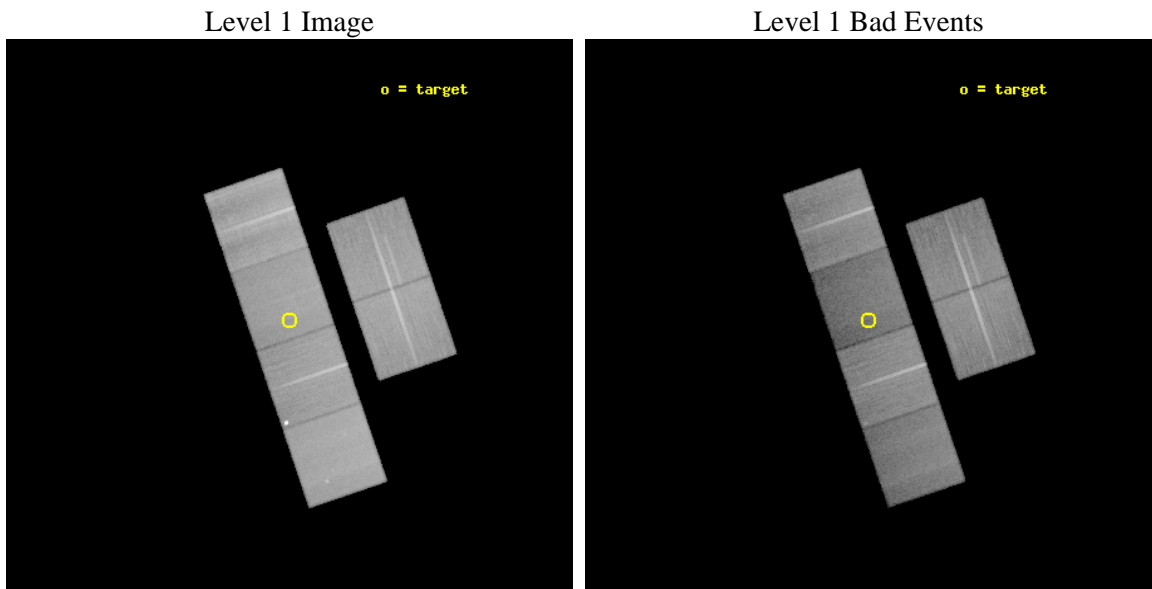
seq_num	501166	Sequence number
obs_id	10912	Observation id
title	Long GRB Jet Breaks	Proposal title
observer	Professor Gordon Garmire	Principal investigator
object	GRB 090423	Source name
dtcycle	0	
cycle	P	events from which exps? Prim/Second/Both
ra_targ	148.8883	Observer's specified target RA [deg]
dec_targ	18.14937	Observer's specified target Dec [deg]
ra_nom	148.88942600473	Nominal RA [deg]
dec_nom	18.14465181782	Nominal Dec [deg]
roll_nom	251.15627686141	Nominal Roll [deg]
revision	2	Processing version of data
ontime	36259.199864984	Sum of GTIs [s]
livetime	35800.064043624	Livetime [s]
ontime2	36252.7178846	Sum of GTIs [s]
ontime3	36259.199864984	Sum of GTIs [s]
ontime5	36259.199864984	Sum of GTIs [s]
ontime6	36255.959014118	Sum of GTIs [s]
ontime7	36259.199864984	Sum of GTIs [s]
ontime8	36255.95889473	Sum of GTIs [s]
l2events	429736	Number of level 2 events



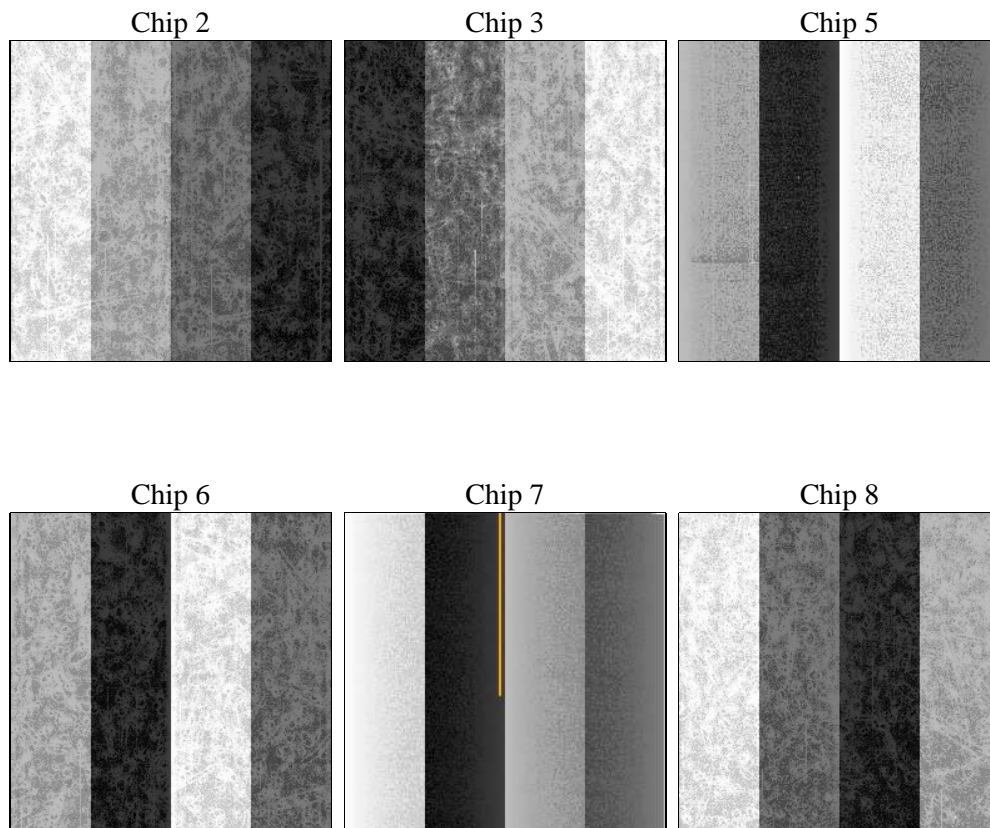
2 OBI

2.1 OBI

2.1.1 Images



2.1.2 Bias



2.1.3 Parameters

obi_num	0	Obi number	sched_exp_time	36110.902000	[s] Scheduled observation exposure time
ascdsver	8.4.5	Processing system revision	ontime	36259.199864984	Sum of GTIs [s]
caldbver	4.4.10	 	ontime2	36252.7178846	Sum of GTIs [s]
date	2012-06-07T17:51:09	Date and time of file creation	ontime3	36259.199864984	Sum of GTIs [s]
revision	2	Processing version of data	ontime5	36259.199864984	Sum of GTIs [s]
			ontime6	36255.959014118	Sum of GTIs [s]
			ontime7	36259.199864984	Sum of GTIs [s]
			ontime8	36255.95889473	Sum of GTIs [s]
			l1events	1954870	Number of level 1 events

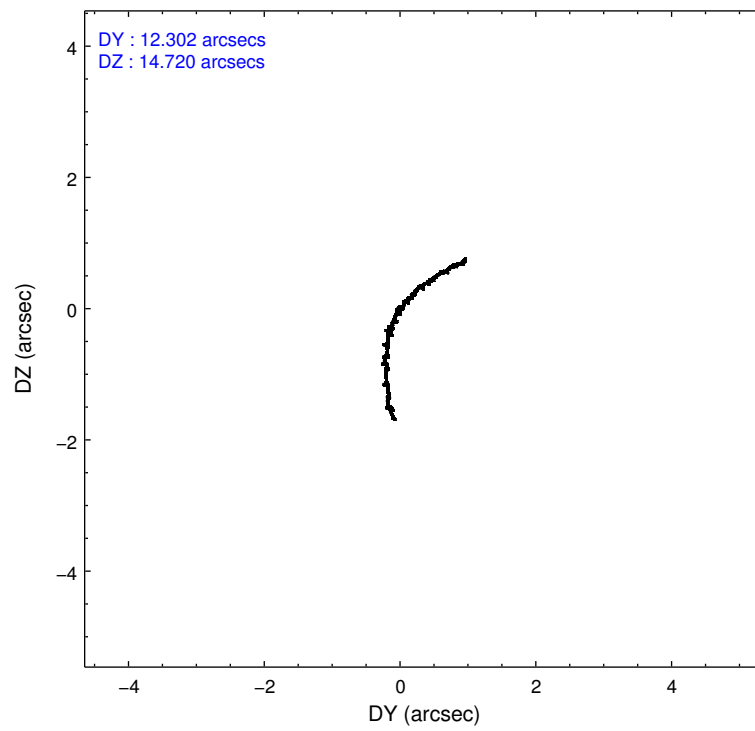
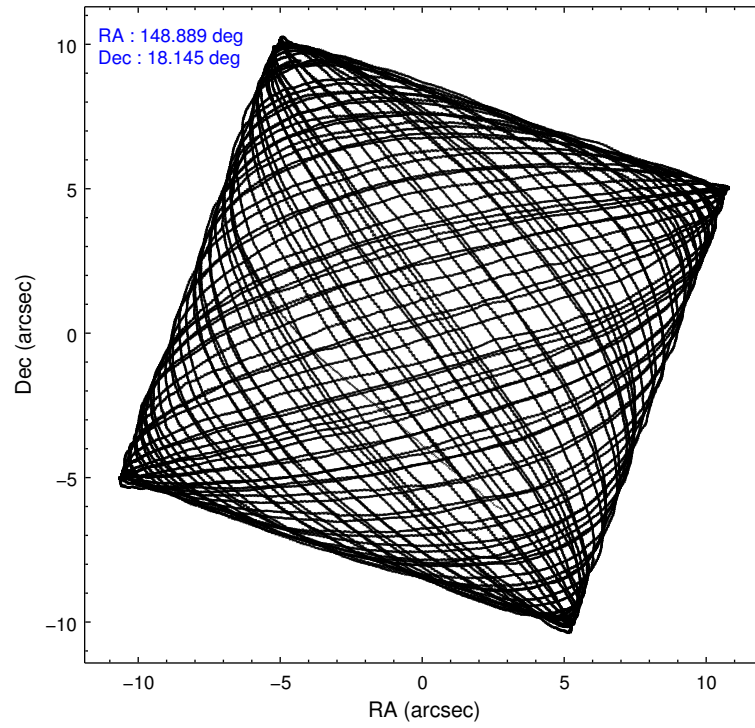
2.1.4 Events

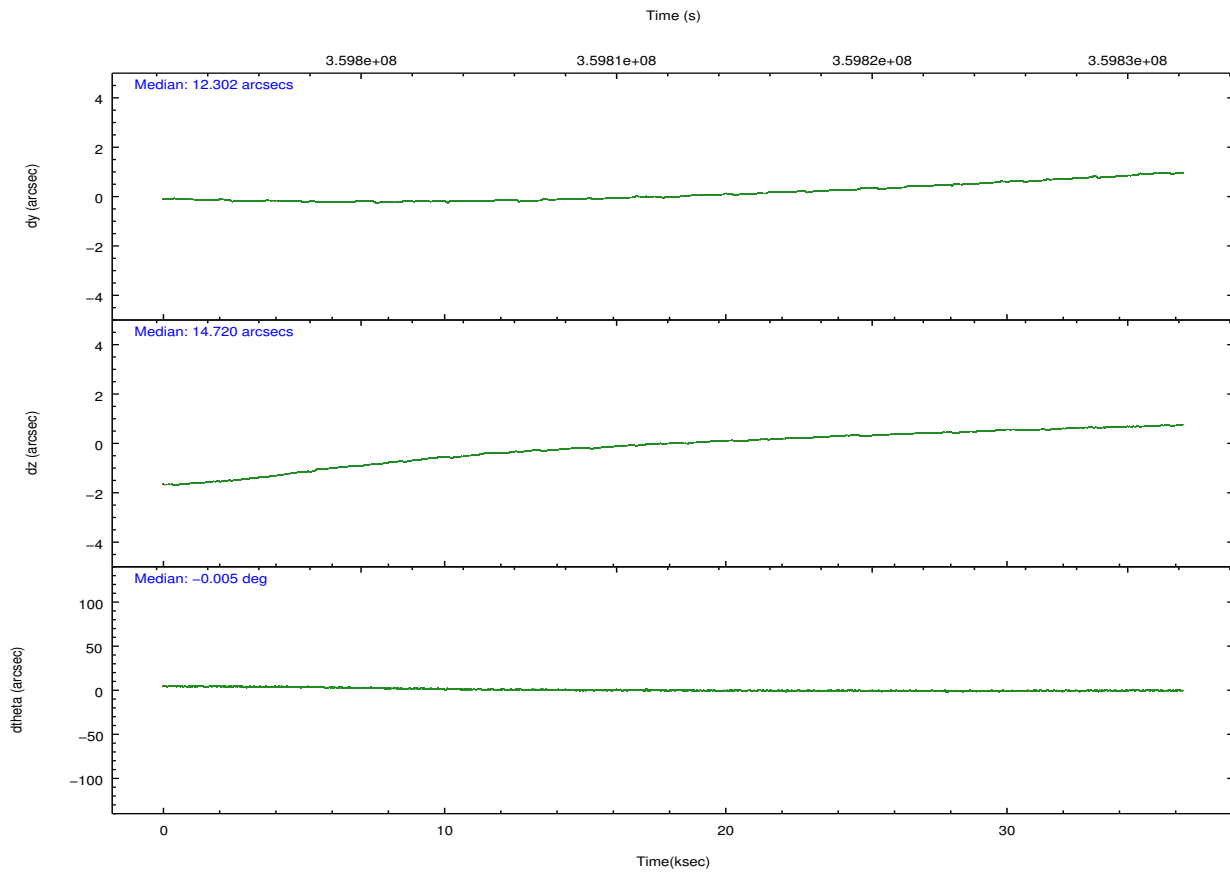
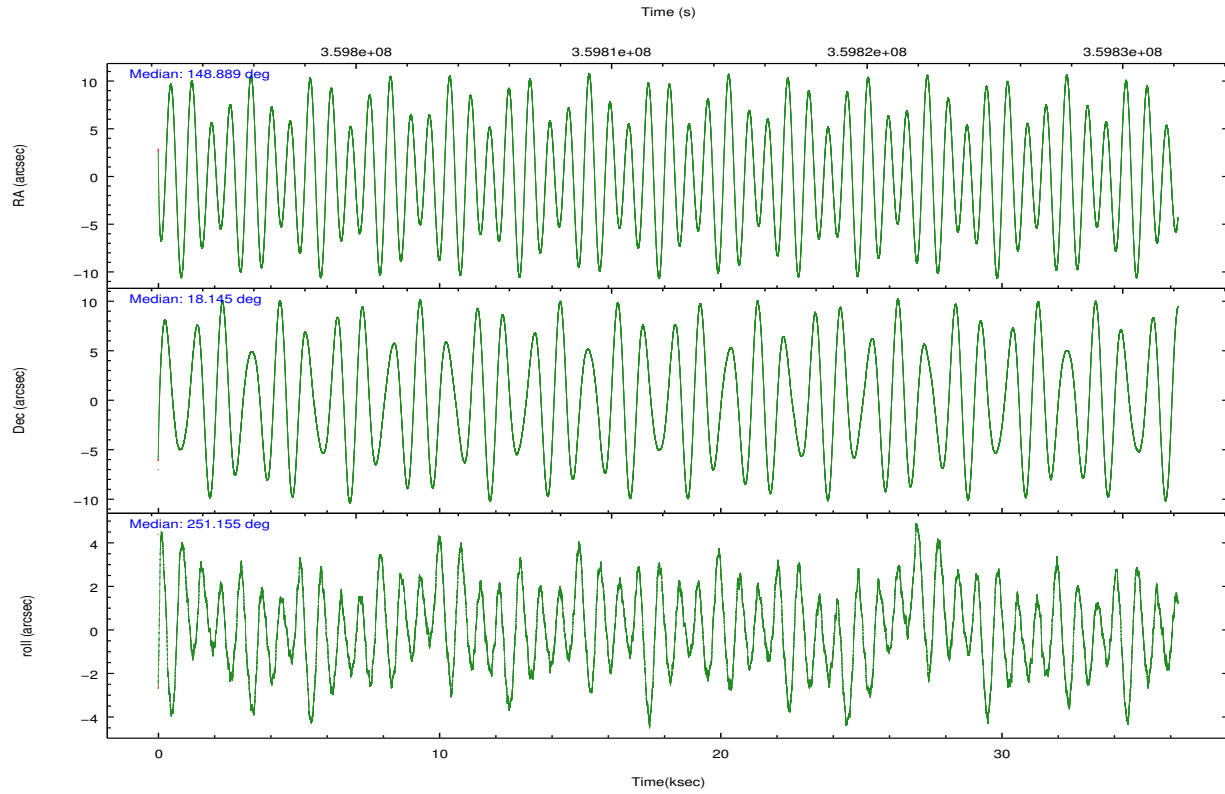
	ccd 2	ccd 3	ccd 5	ccd 6	ccd 7	ccd 8		ccd 2	ccd 3	ccd 5	ccd 6	ccd 7	ccd 8
level 1 events	318739	290050	372853	309769	288711	374748	grade 0 events	10566	10362	15222	22072	14592	27457
rejected events	289797	262233	178613	268442	146914	276123		3%	3%	4%	7%	5%	7%
rejected %	90%	90%	47%	86%	50%	73%	grade 1 events	186	146	842	196	483	315
								0%	0%	0%	0%	0%	0%
							grade 2 events	7048	6001	61027	6834	30412	23383
								2%	2%	16%	2%	10%	6%
							grade 3 events	2974	3109	8711	3240	13377	10981
								0%	1%	2%	1%	4%	2%
							grade 4 events	3126	3189	8421	3220	13098	9958
								0%	1%	2%	1%	4%	2%
							grade 5 events	8795	10389	30385	10500	30887	16032
								2%	3%	8%	3%	10%	4%
							grade 6 events	5327	5254	101662	6126	70844	27137
								1%	1%	27%	1%	24%	7%
							grade 7 events	280717	251600	146583	257581	115018	259485
								88%	86%	39%	83%	39%	69%

2.2 Compared Parameters

Parameter	Planned	Actual	Parameter	Planned	Actual
Instrument	ACIS	ACIS	Obspar format version number	7	7
Detector	ACIS-235678	ACIS-235678	Obspar file type	PREDICTED	ACTUAL
Grating	NONE	NONE	Obspar update status	NONE	UPDATED
Data mode	VFAINT	VFAINT	CCD I0 on	N	N
Observation mode	POINTING	POINTING	CCD I1 on	N	N
[deg] Pointing RA	148.883481	148.8894260047347	CCD I2 on	O2	Y
[deg] Pointing Dec	18.171390	18.14465181782001	CCD I3 on	O3	Y
[deg] Pointing Roll	251.001497	251.156276861413	CCD S0 on	N	N
[mm] SIM focus pos	-0.684267	-0.6828225247311905	CCD S1 on	O1	Y
[mm] SIM defocus	0	0.001444936568705701	CCD S2 on	O5	Y
[mm] SIM translation stage pos	-190.132523	-190.1400660498719	CCD S3 on	Y	Y
[mm] SIM translation stage offset	0	0.00754346686406393	CCD S4 on	O4	Y
[s] Observation start time (MET)	359794226.184000	359793099.51288	CCD S5 on	N	N
Observation start date	2009-05-27T06:49:20	2009-05-27T06:31:39	Number of optional ACIS chips dropped	0	0
[s] Observation end time (MET)	359830337.184000	359830561.72724	On-chip summing requested	N	N
Observation end date	2009-05-27T16:51:11	2009-05-27T16:56:01	Subarray requested	NONE	NONE
Read mode	TIMED	TIMED	Alternating exposures requested	N	N
			[s] Primary exposure time	0.000000	3.2

2.3 Aspect



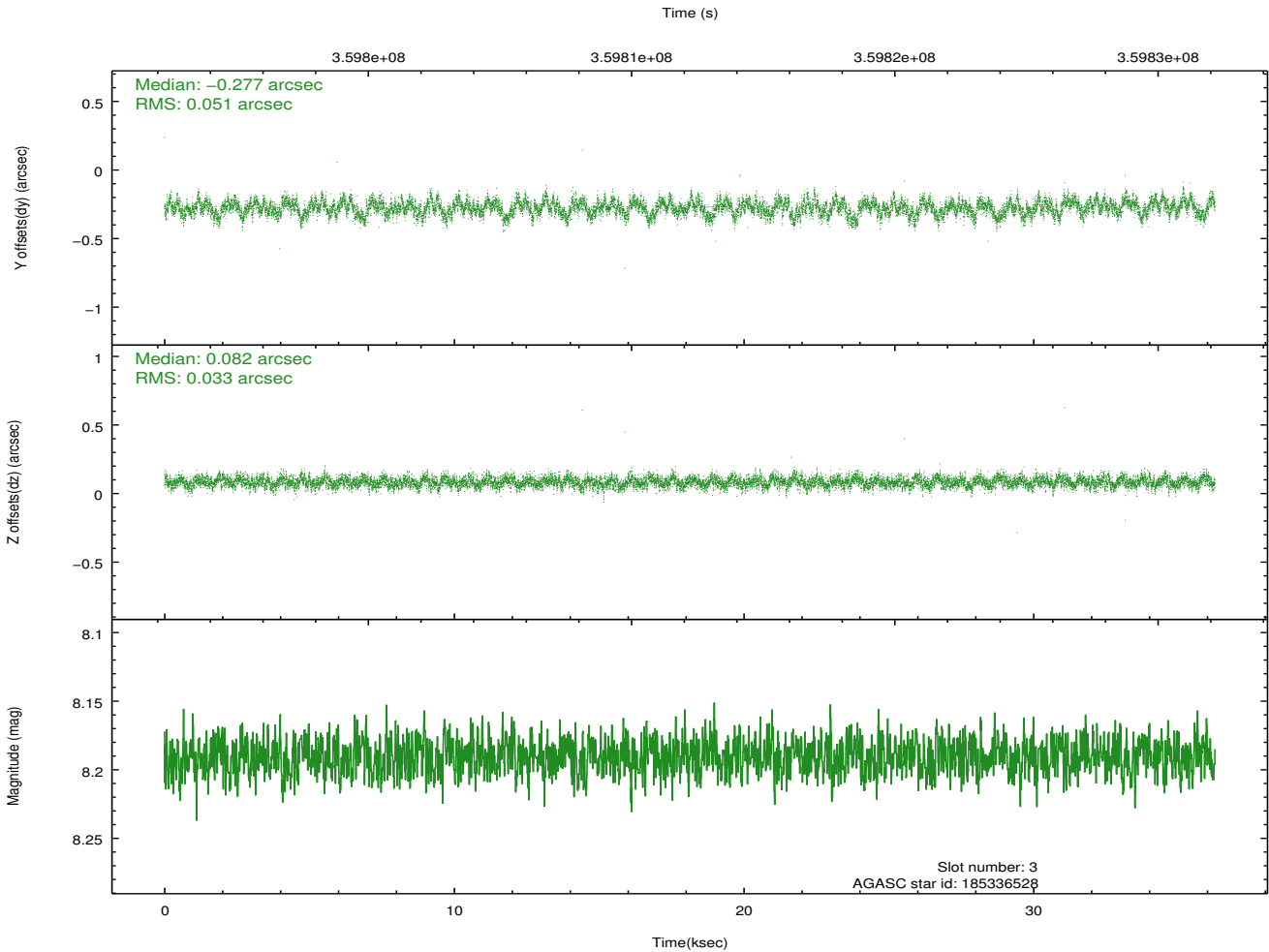
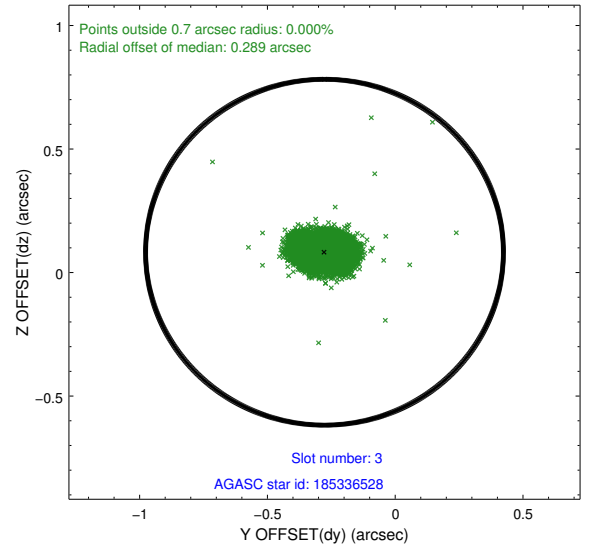
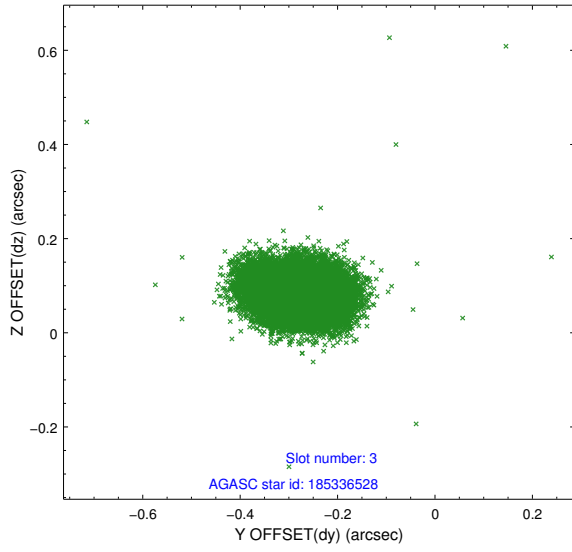


Slot Statistics

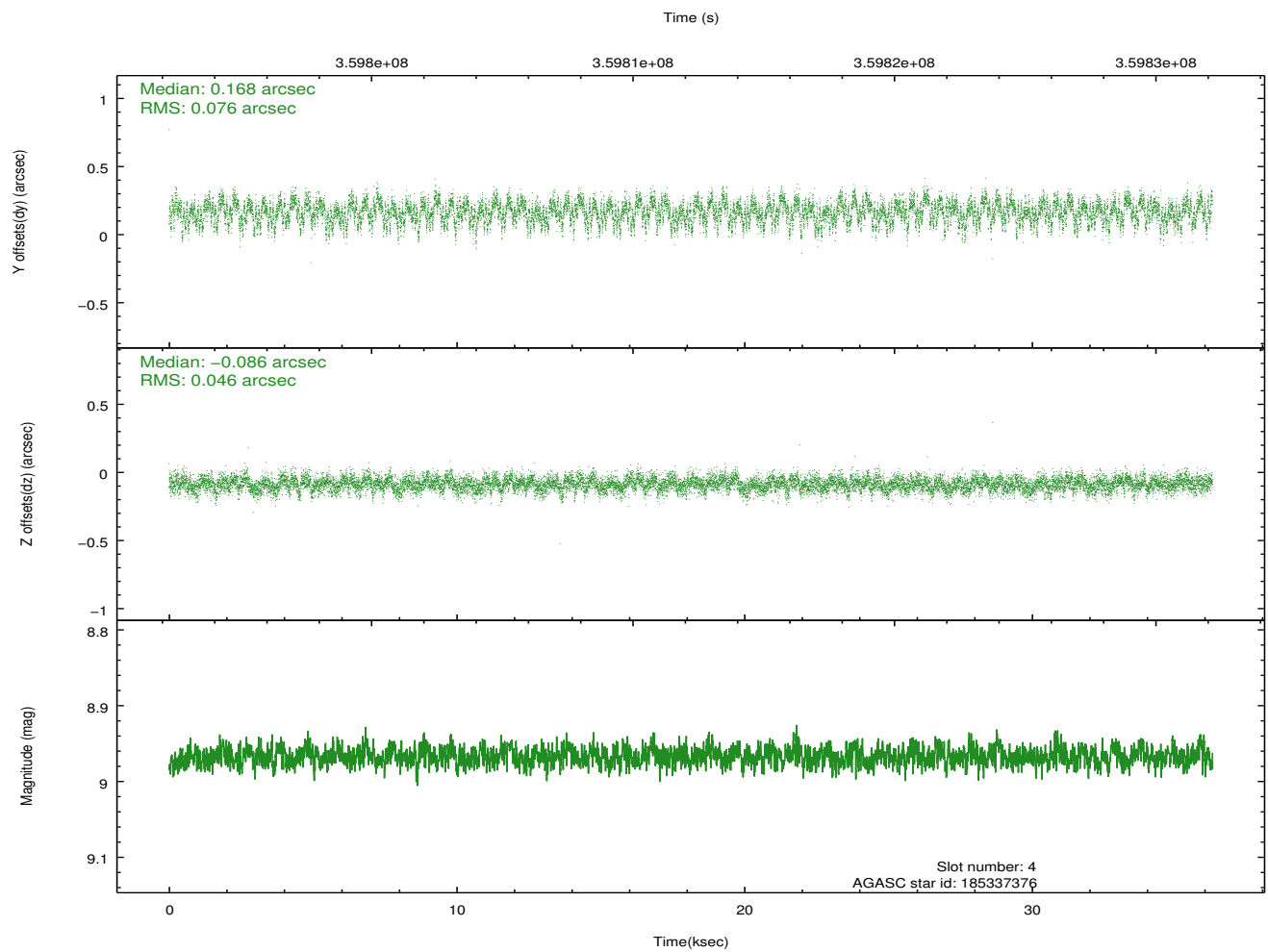
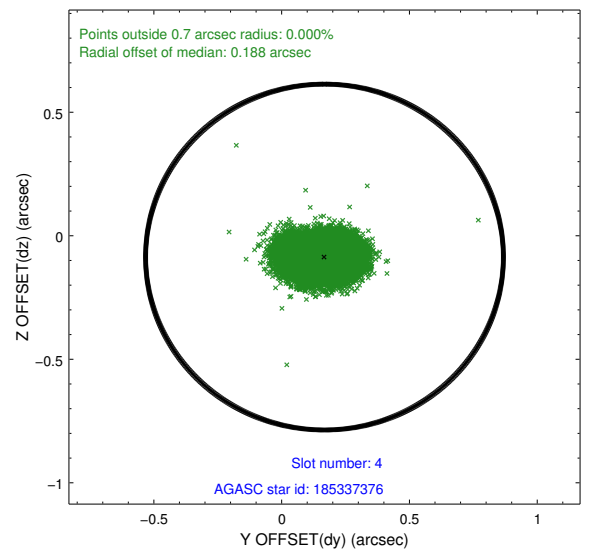
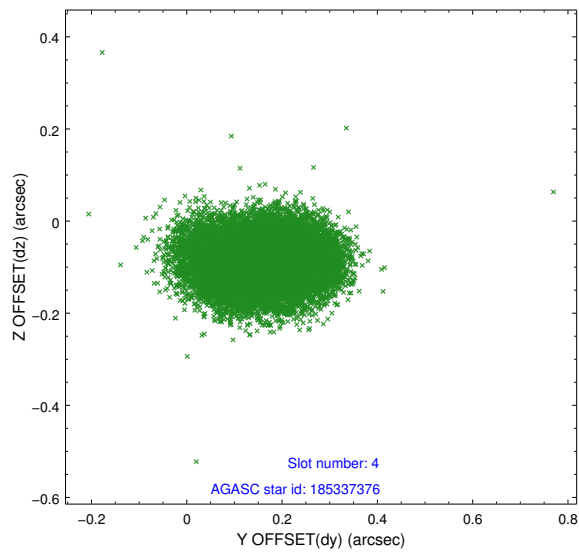
slot	status	id	mag	n_pts	med_dy	med_dz	dr1	dr2	ra	dec	mean_y	mean_z
0	FID	ACIS-S-2	6.93	8844	-0.045	-0.030	0.015	0.030	0.000000	0.000000	-765.38	-1735.95
1	FID	ACIS-S-4	7.02	8845	0.142	0.029	0.022	0.035	0.000000	0.000000	2148.05	172.58
2	FID	ACIS-S-5	7.05	8846	-0.129	0.008	0.018	0.025	0.000000	0.000000	-1818.29	166.23
3	GUIDE	185336528	8.19	17679	-0.277	0.082	0.063	0.106	148.892720	18.821206	-2221.49	-731.27
4	GUIDE	185337376	8.97	17682	0.168	-0.086	0.094	0.153	148.106056	17.934285	1669.38	-2241.32
5	GUIDE	185339440	8.60	17686	0.131	0.145	0.069	0.113	148.983258	17.541515	2033.57	1062.37
6	GUIDE	185342864	9.36	17653	0.237	0.011	0.115	0.189	148.362201	17.656961	2331.68	-1088.24
7	GUIDE	185337696	8.61	17678	-0.254	-0.148	0.074	0.121	148.432118	18.944409	-2132.37	-2359.84

2.4 Star Slots

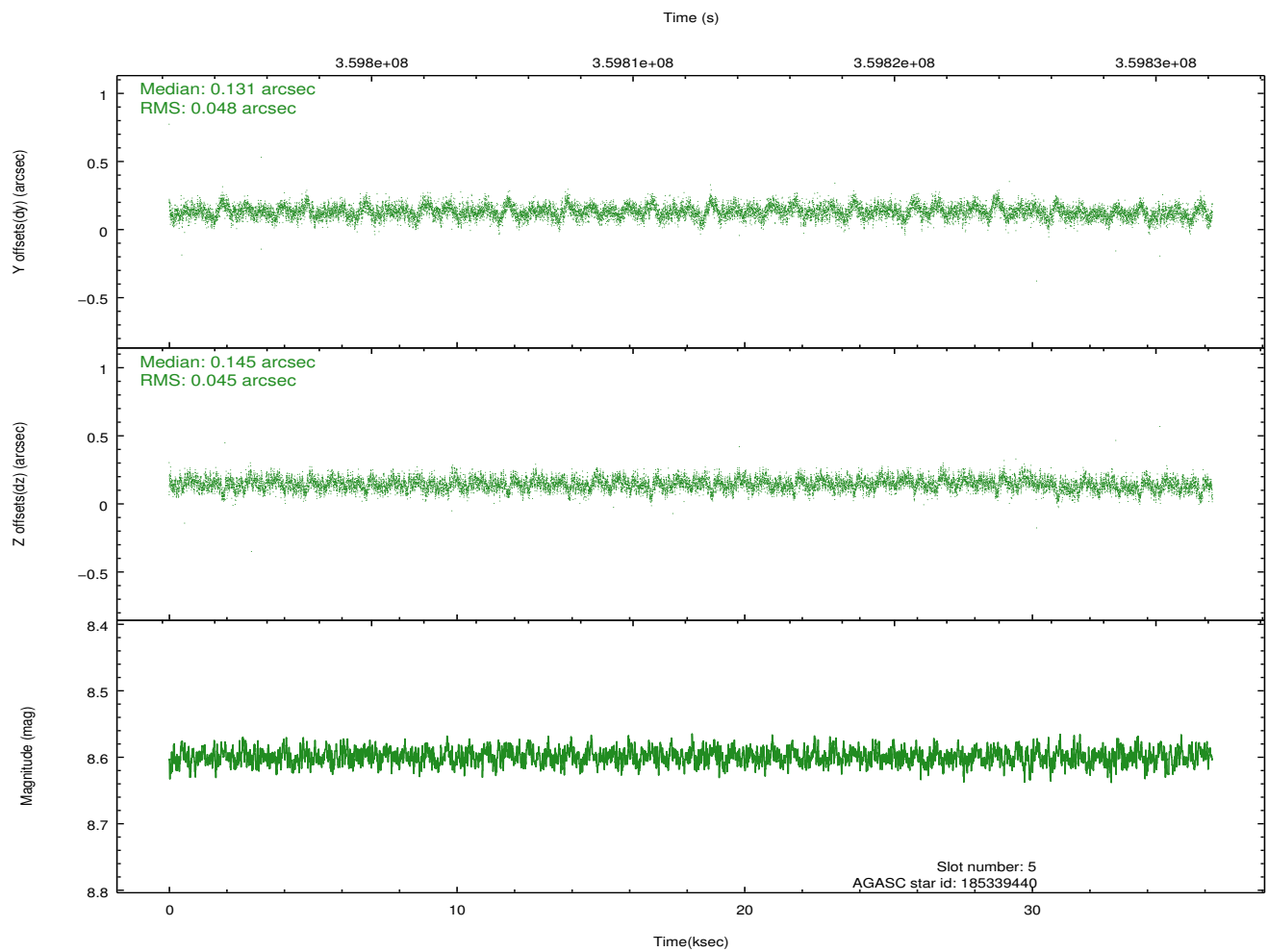
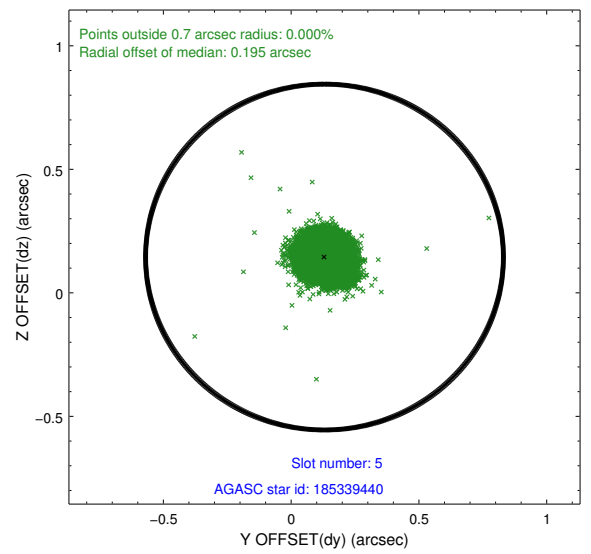
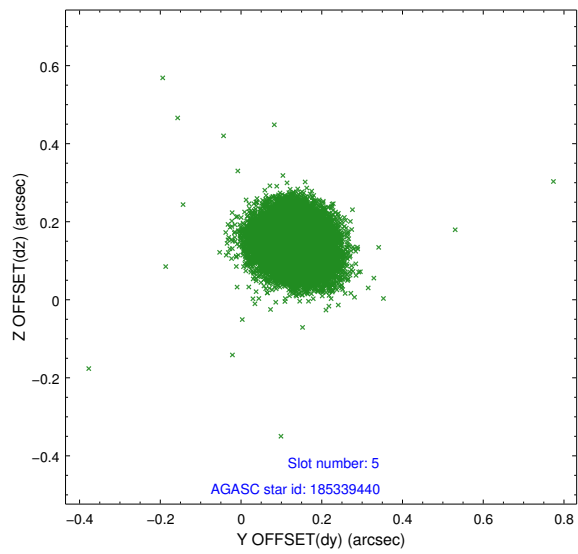
2.4.1 Slot 3



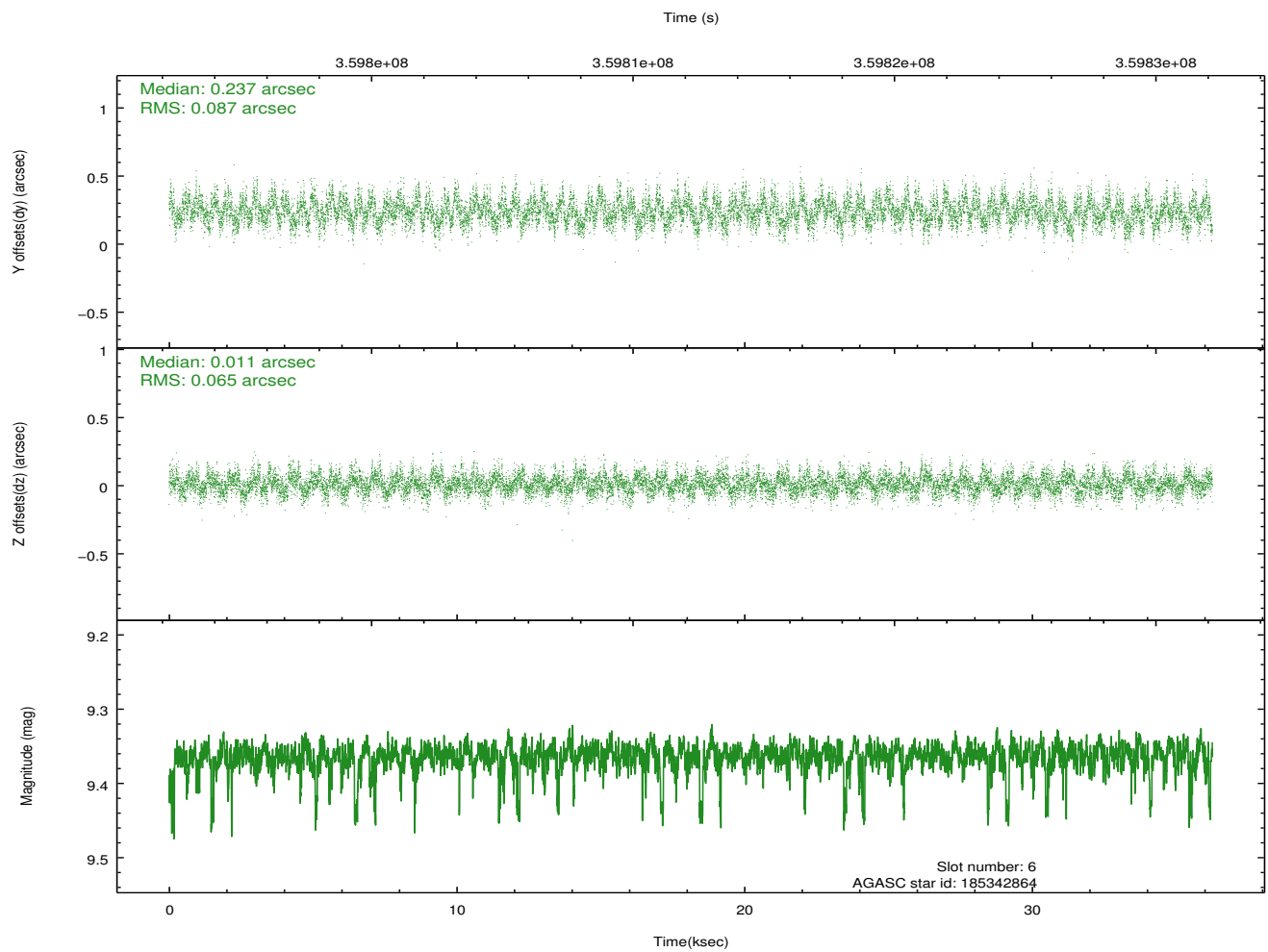
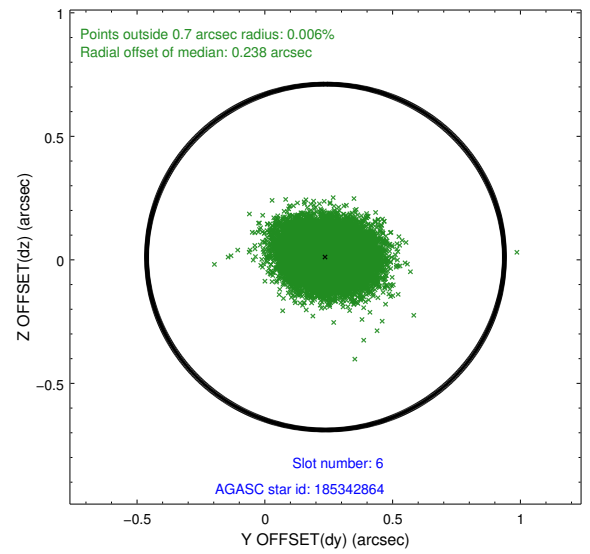
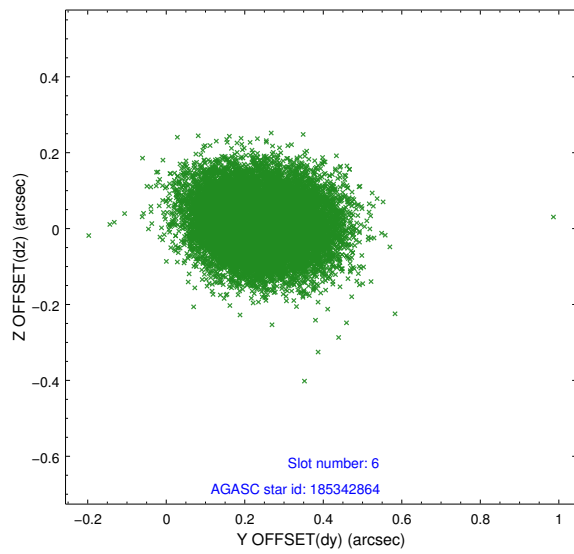
2.4.2 Slot 4



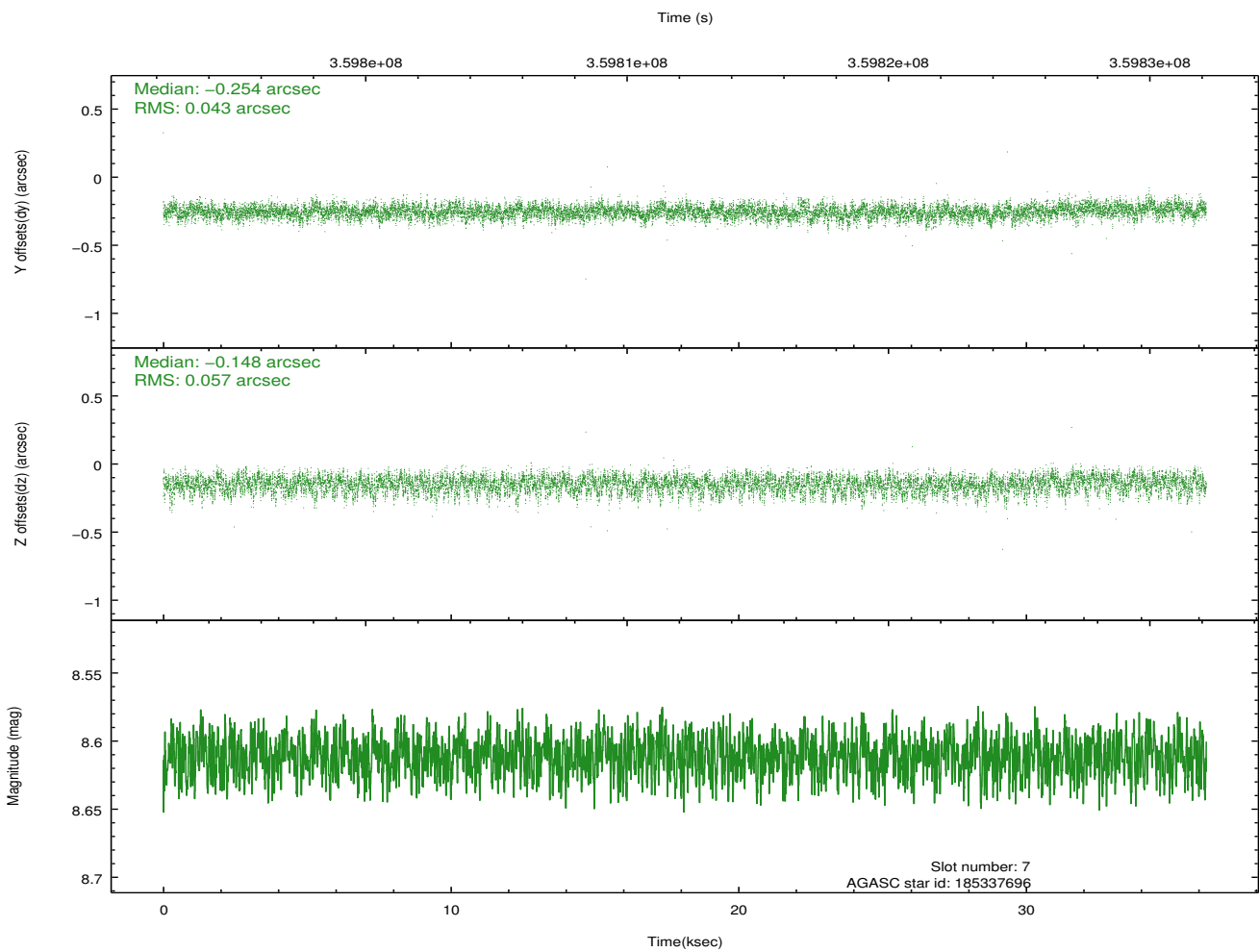
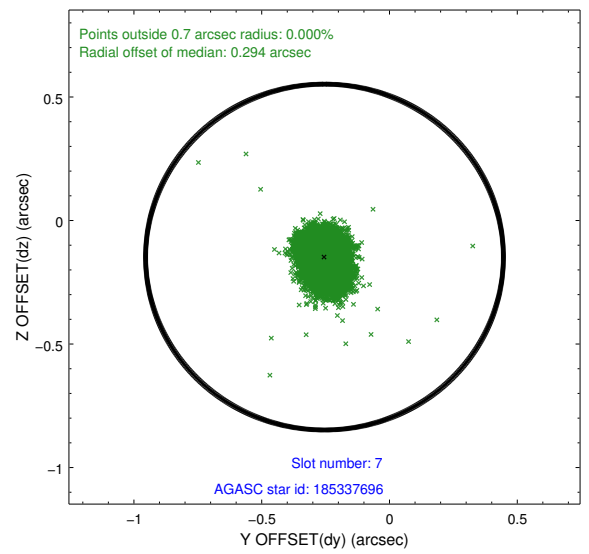
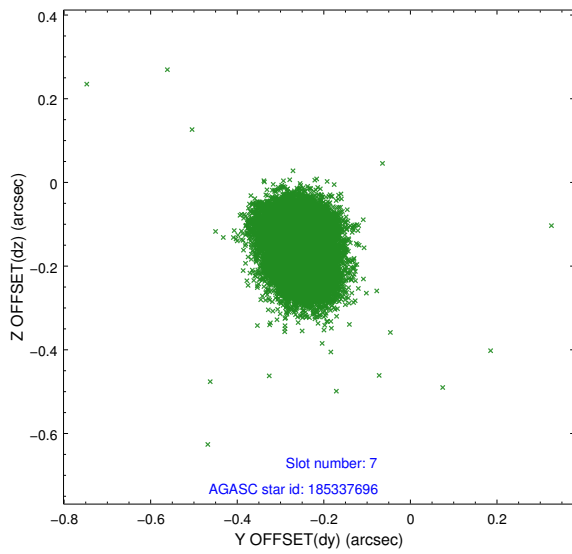
2.4.3 Slot 5



2.4.4 Slot 6

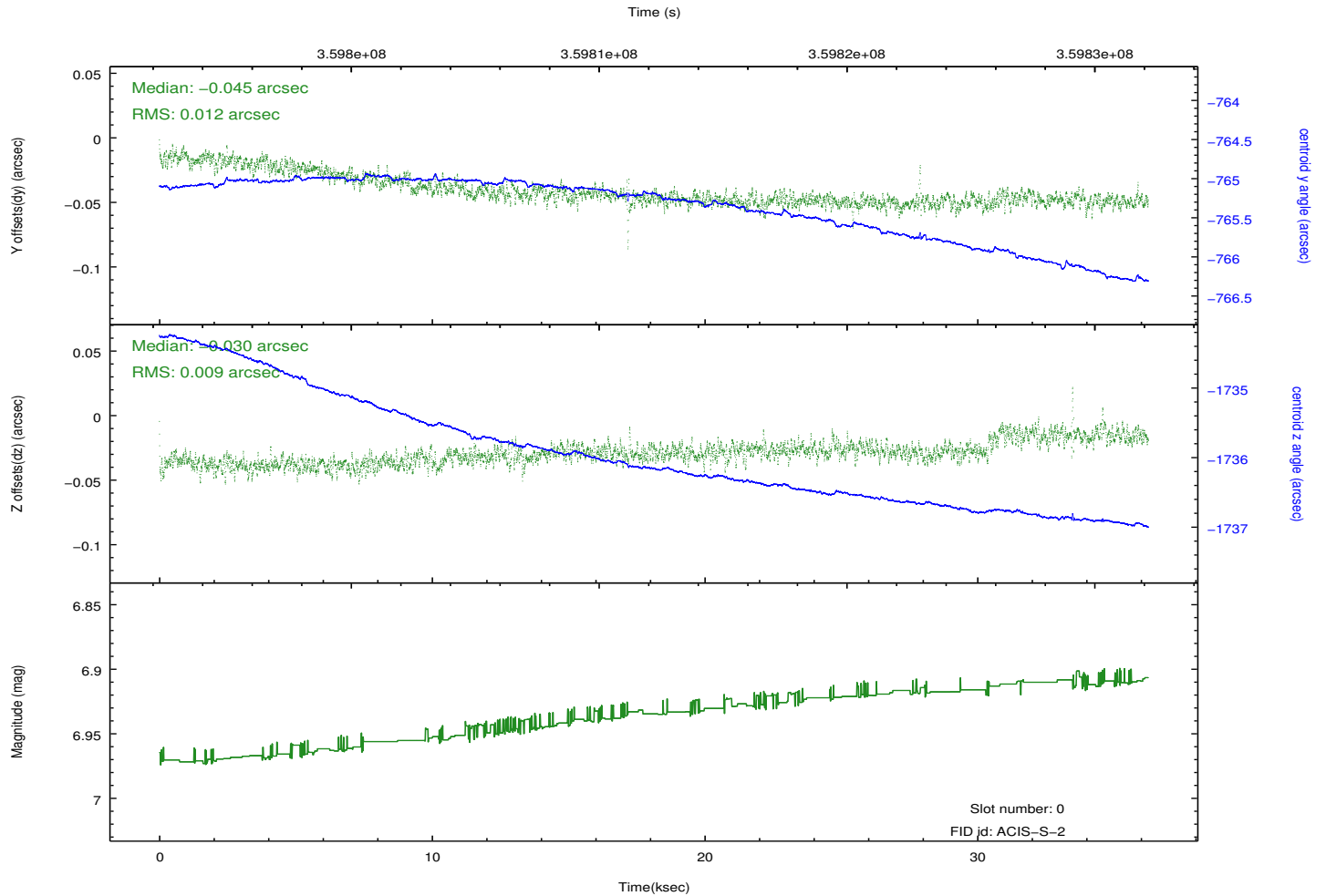
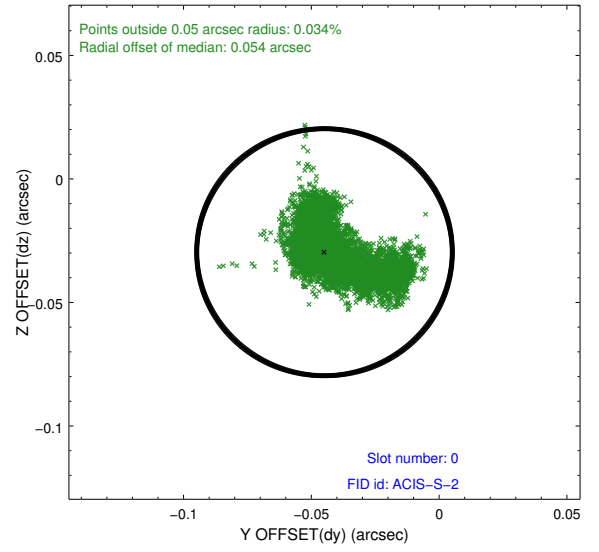
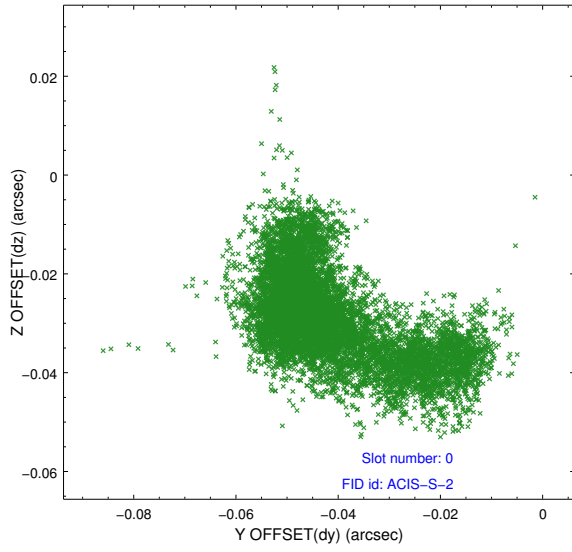


2.4.5 Slot 7

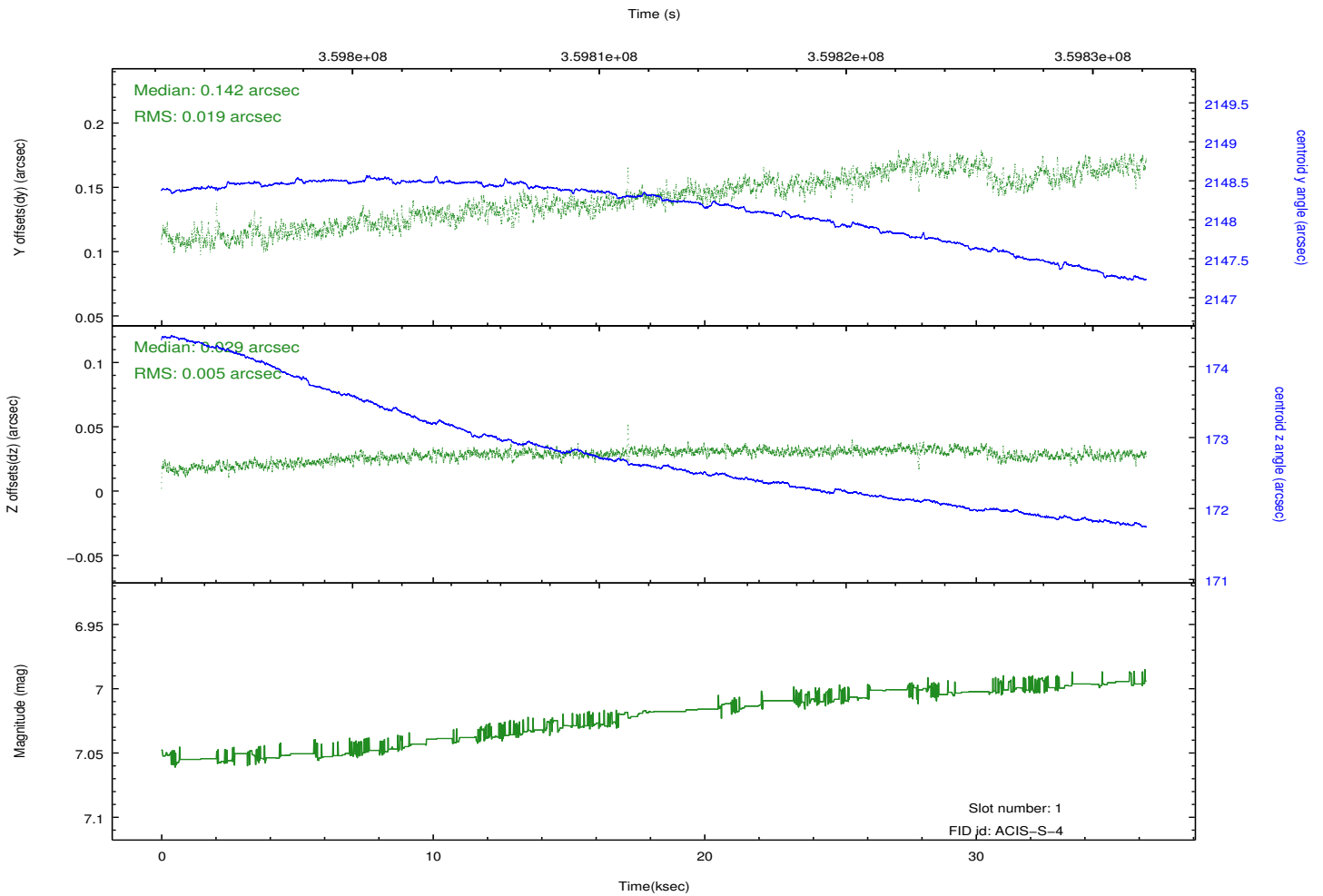
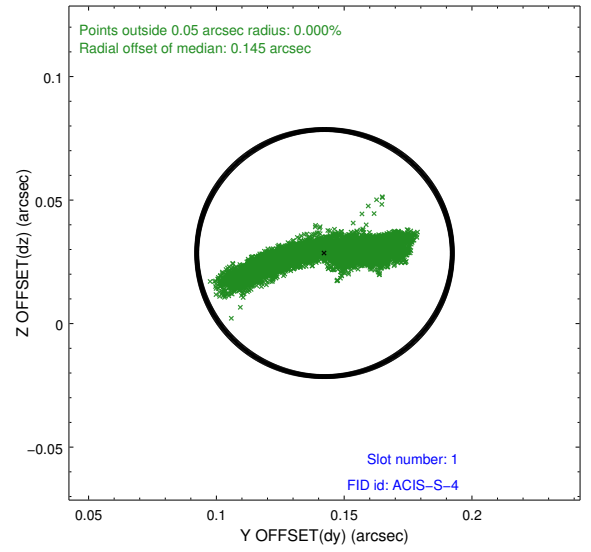
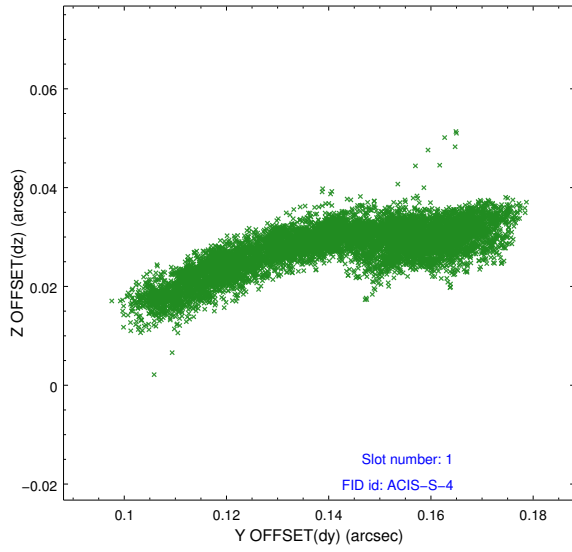


2.5 FID Slots

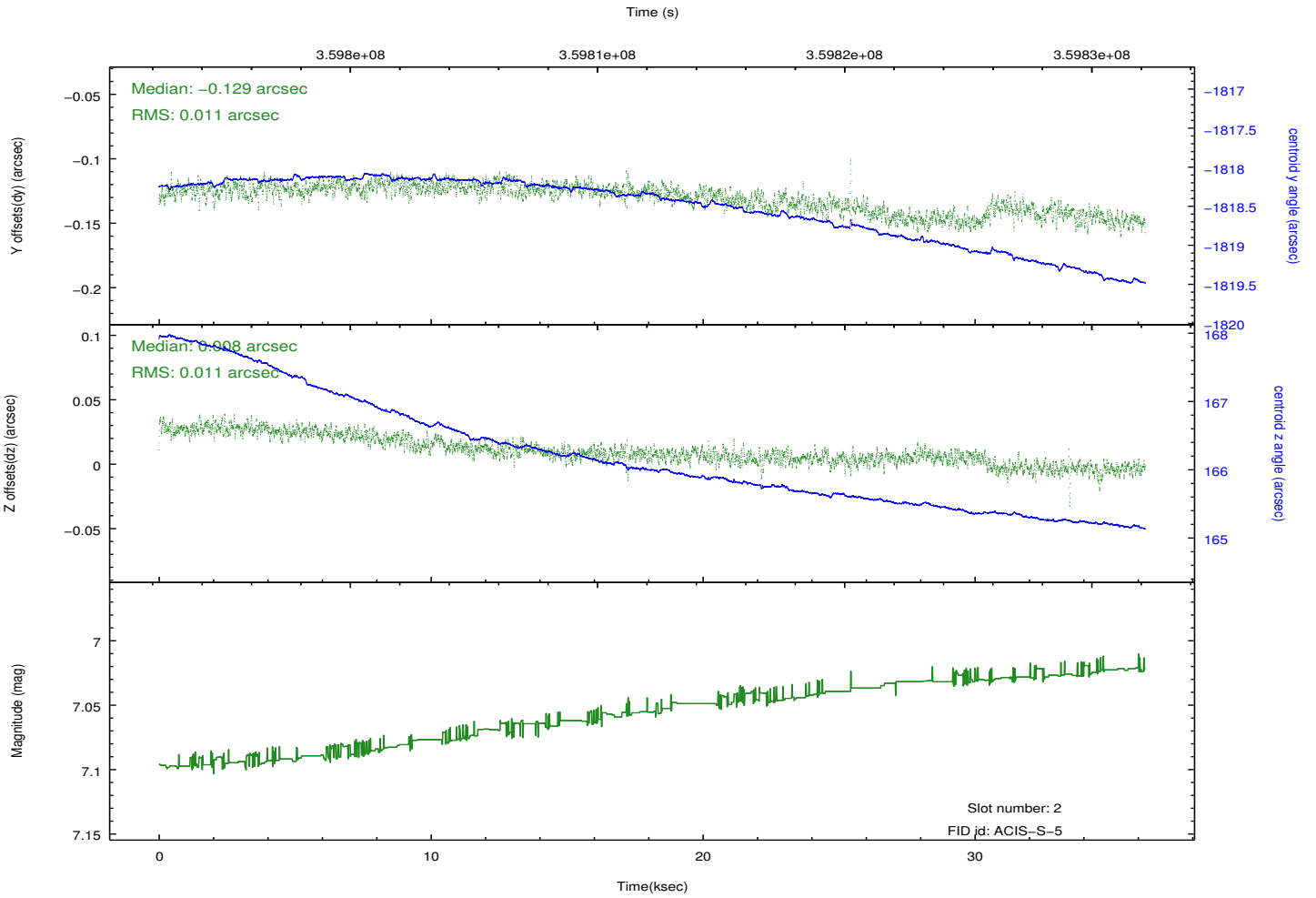
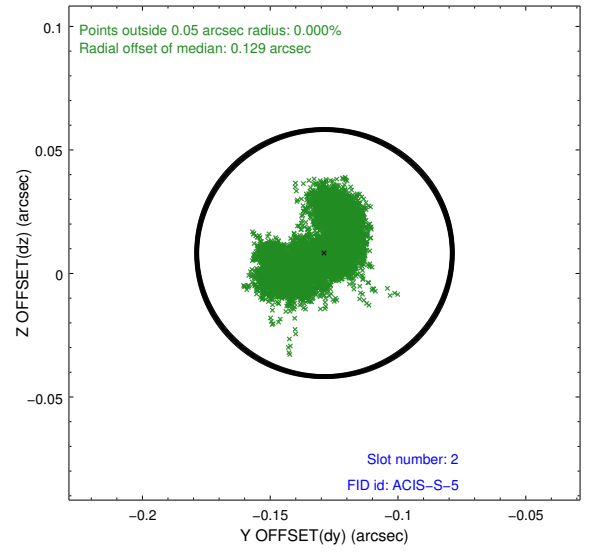
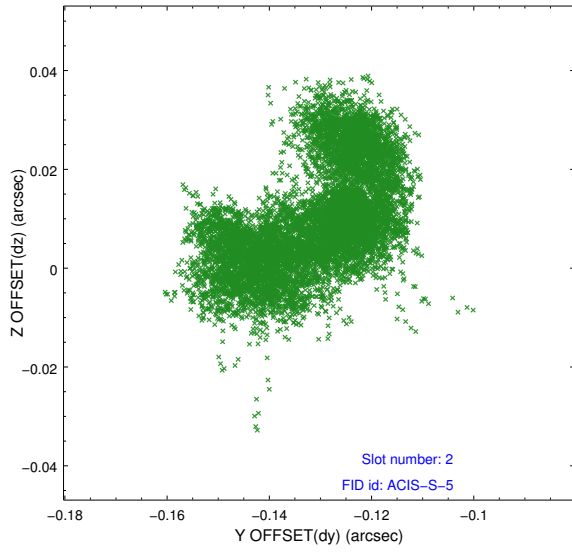
2.5.1 Slot 0



2.5.2 Slot 1



2.5.3 Slot 2



A Summary

A.1 Status

V&V Scientist	Jen Lauer
V&V Date (YYYY-MM-DD)	2012.06.11
V&V Edition	1
V&V Disposition and Status	OK
V&V Charge Time	36.2591998

A.2 Comments

Monitoring interval met.