

V&V Reference Report

L2 ASCDS Version : 8.4.5

Observation 10932 - L2 Version 2
Chandra X-Ray Center

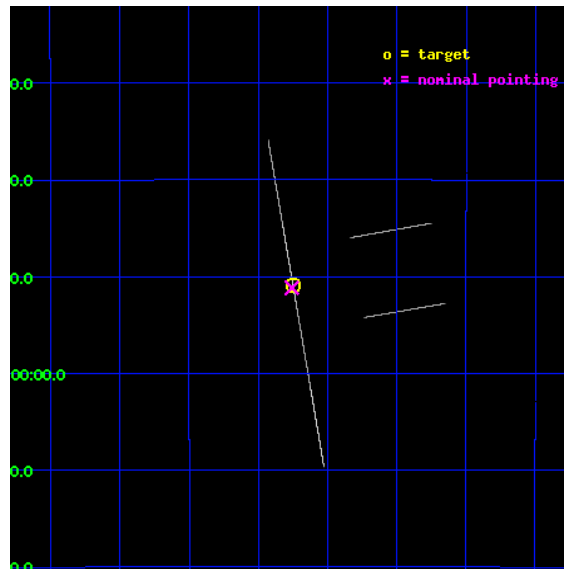
L2 Processing Date : Jun 11 2012

Contents

1	Front	2
2	OBI	3
2.1	OBI	3
2.1.1	Images	3
2.1.2	Bias	3
2.1.3	Parameters	4
2.1.4	Events	4
2.2	Compared Parameters	5
2.3	Aspect	6
2.4	Star Slots	9
2.4.1	Slot 3	9
2.4.2	Slot 4	10
2.4.3	Slot 5	11
2.4.4	Slot 6	12
2.4.5	Slot 7	13
2.5	FID Slots	14
2.5.1	Slot 0	14
2.5.2	Slot 1	15
2.5.3	Slot 2	16
A	Summary	17
A.1	Status	17
A.2	Comments	17

1 Front

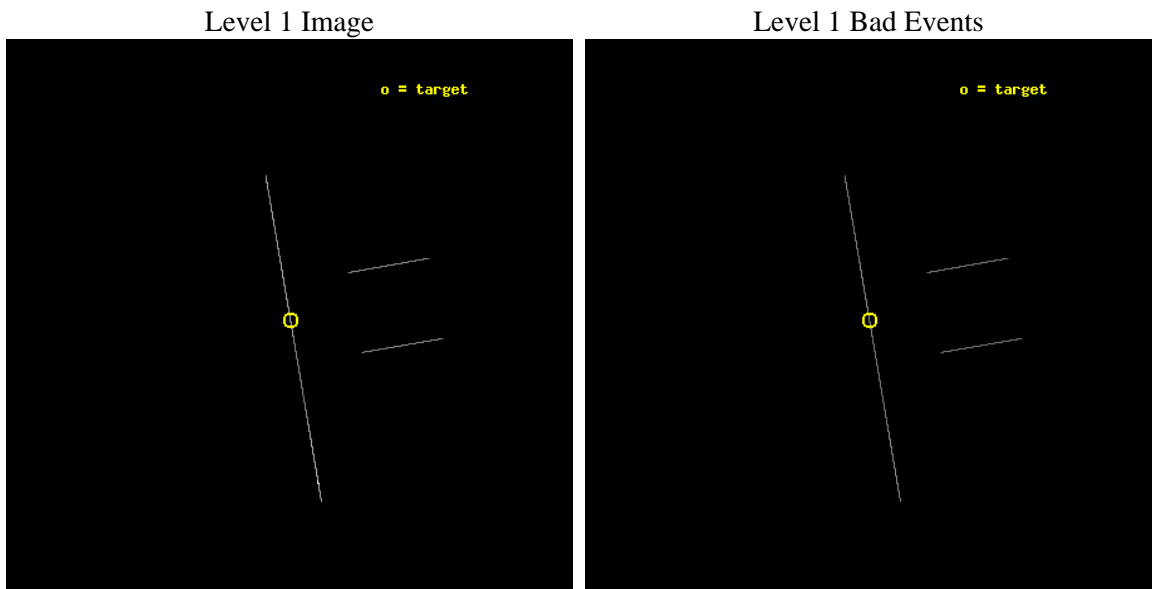
seq_num	401017	Sequence number
obs_id	10932	Observation id
title	Deep search for the pulsars powering the TeV emission of LS I 61+303 and LS 5039	Proposal title
observer	Dr. Nanda Rea	Principal investigator
object	LS 5039	Source name
ra_targ	276.5625	Observer's specified target RA [deg]
dec_targ	-14.848222	Observer's specified target Dec [deg]
ra_nom	276.56437960527	Nominal RA [deg]
dec_nom	-14.852708855373	Nominal Dec [deg]
roll_nom	260.15711258179	Nominal Roll [deg]
revision	2	Processing version of data
ontime	25081.0	Sum of GTIs [s]
livetime	24983.02734375	Livetime [s]
ontime2	25081.0	Sum of GTIs [s]
ontime3	25081.0	Sum of GTIs [s]
ontime5	25081.0	Sum of GTIs [s]
ontime6	25081.0	Sum of GTIs [s]
ontime7	25081.0	Sum of GTIs [s]
ontime8	25081.0	Sum of GTIs [s]
l2events	486758	Number of level 2 events



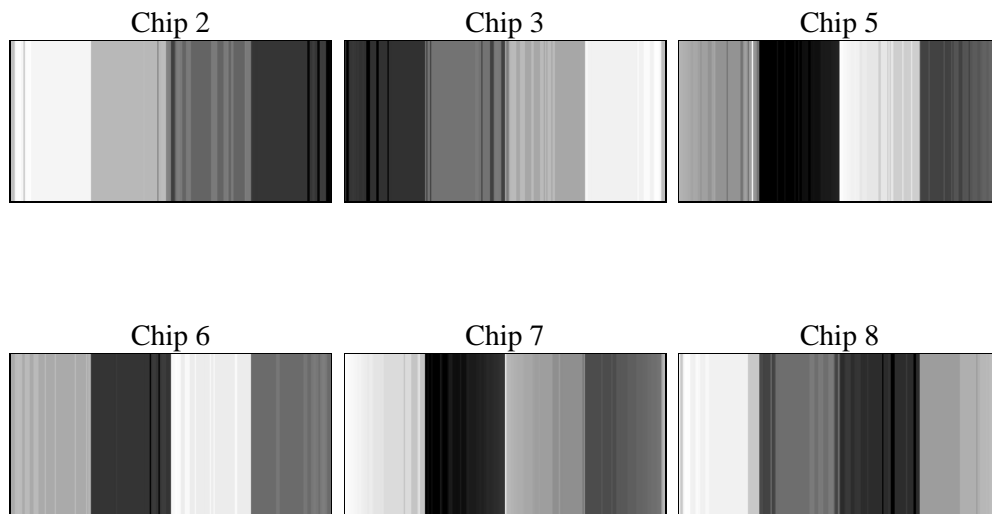
2 OBI

2.1 OBI

2.1.1 Images



2.1.2 Bias



2.1.3 Parameters

obi_num	1	Obi number	sched_exp_time	25000.000000	[s] Scheduled observation exposure time
ascdsver	8.4.5	Processing system revision	ontime	25081.0	Sum of GTIs [s]
caldbver	4.4.10	 	ontime2	25081.0	Sum of GTIs [s]
date	2012-06-11T14:38:24	Date and time of file creation	ontime3	25081.0	Sum of GTIs [s]
revision	2	Processing version of data	ontime5	25081.0	Sum of GTIs [s]
			ontime6	25081.0	Sum of GTIs [s]
			ontime7	25081.0	Sum of GTIs [s]
			ontime8	25081.0	Sum of GTIs [s]
			l1events	846211	Number of level 1 events

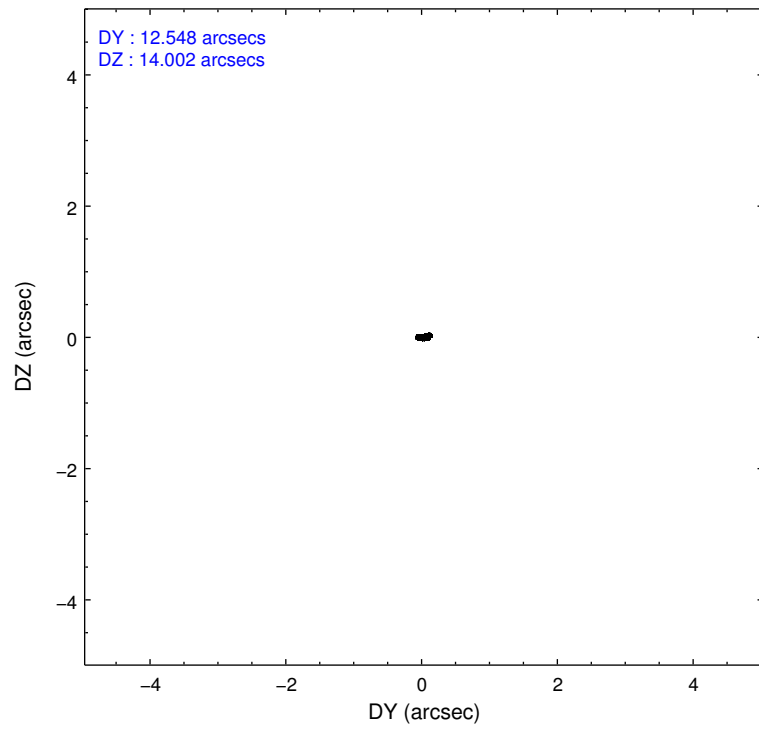
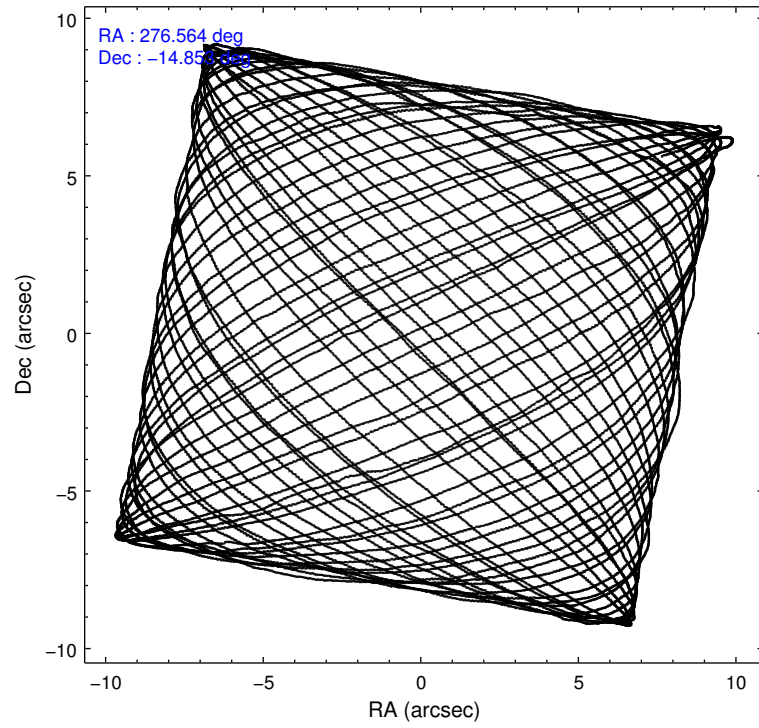
2.1.4 Events

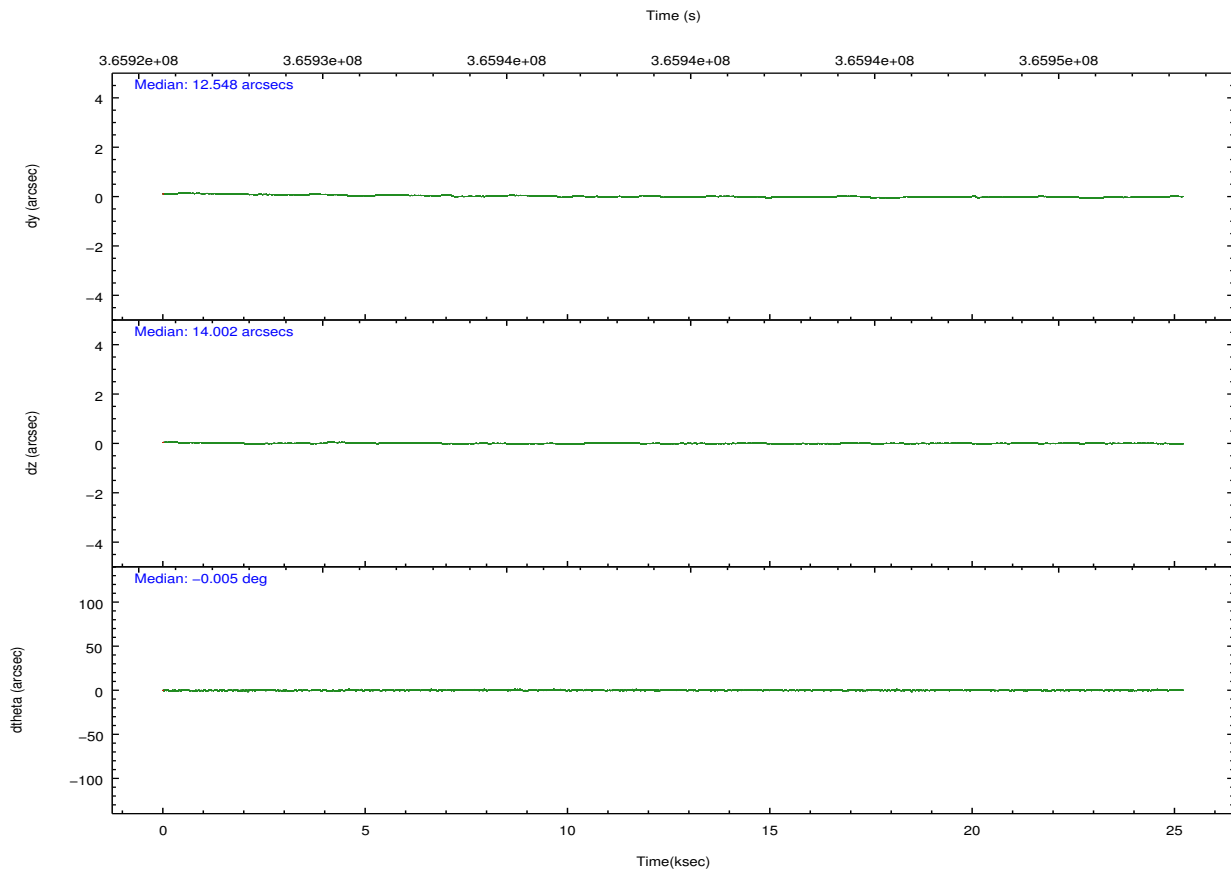
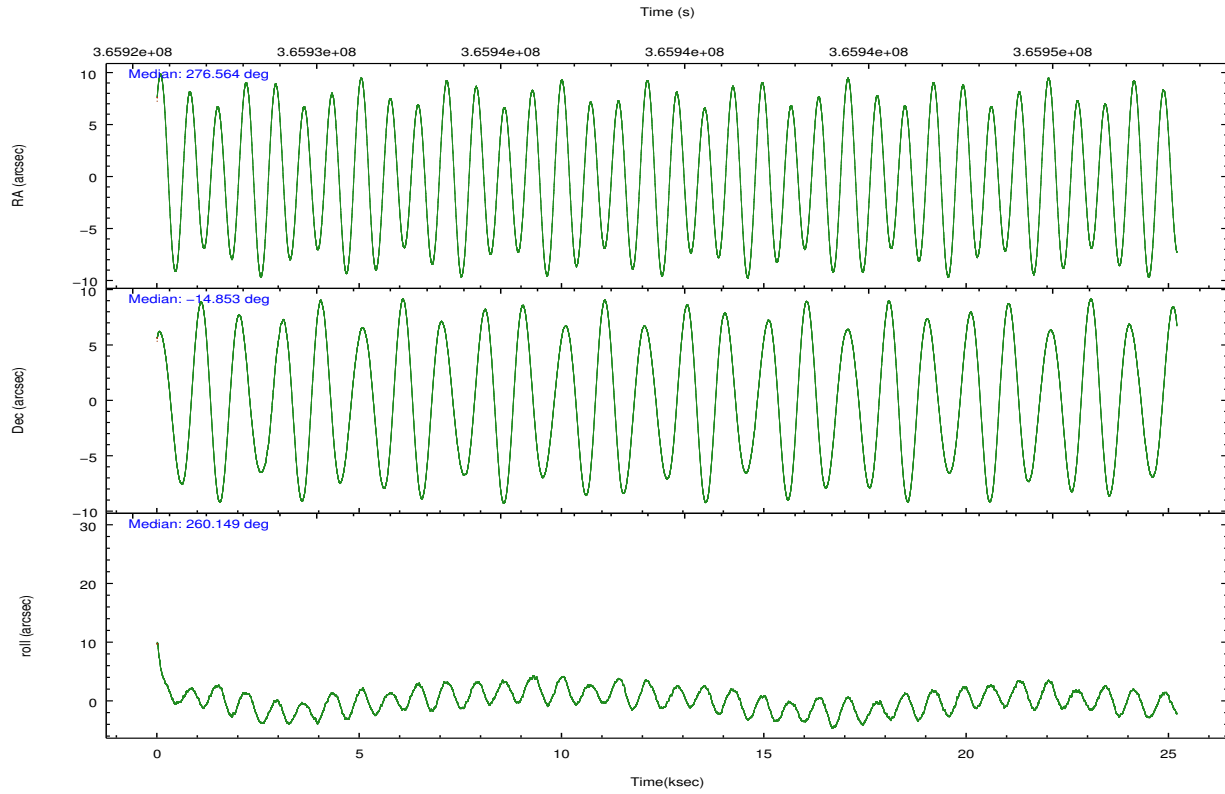
	ccd 2	ccd 3	ccd 5	ccd 6	ccd 7	ccd 8		ccd 2	ccd 3	ccd 5	ccd 6	ccd 7	ccd 8
level 1 events	52489	57614	374399	58691	181500	121518	grade 0 events	6090	6662	129314	6274	12979	22071
rejected events	10304	11657	24686	12034	27902	16839		11%	11%	34%	10%	7%	18%
rejected %	19%	20%	6%	20%	15%	13%	grade 1 events	238	226	492	222	454	473
								0%	0%	0%	0%	0%	0%
							grade 2 events	16668	18249	103540	17773	40665	33161
								31%	31%	27%	30%	22%	27%
							grade 3 events	5230	5660	4694	5728	9501	11088
								9%	9%	1%	9%	5%	9%
							grade 4 events	5111	4841	4457	5199	9262	10750
								9%	8%	1%	8%	5%	8%
							grade 5 events	10064	11424	24140	11809	27430	16353
								19%	19%	6%	20%	15%	13%
							grade 6 events	9088	10552	107762	11686	81209	27622
								17%	18%	28%	19%	44%	22%
							grade 7 events	0	0	0	0	0	0
								0%	0%	0%	0%	0%	0%

2.2 Compared Parameters

Parameter	Planned	Actual	Parameter	Planned	Actual
Instrument	ACIS	ACIS	Obspar format version number	7	7
Detector	ACIS-235678	ACIS-235678	Obspar file type	PREDICTED	ACTUAL
Grating	NONE	NONE	Obspar update status	NONE	UPDATED
Data mode	CC33_FAINT	CC33_FAINT	CCD I0 on	N	N
Observation mode	POINTING	POINTING	CCD I1 on	N	N
[deg] Pointing RA	276.554260	276.5643796052688	CCD I2 on	O1	Y
[deg] Pointing Dec	-14.827190	-14.8527088553732	CCD I3 on	O2	Y
[deg] Pointing Roll	259.997894	260.1571125817928	CCD S0 on	N	N
[mm] SIM focus pos	-0.684267	-0.6828225247311905	CCD S1 on	Y	Y
[mm] SIM defocus	0	0.001444936568705701	CCD S2 on	Y	Y
[mm] SIM translation stage pos	-190.132523	-190.1400660498719	CCD S3 on	Y	Y
[mm] SIM translation stage offset	0	0.00754346686406393	CCD S4 on	Y	Y
[s] Observation start time (MET)	365927122.184000	365926632.68197	CCD S5 on	N	N
Observation start date	2009-08-06T06:24:16	2009-08-06T06:17:12	Number of optional ACIS chips dropped	0	0
[s] Observation end time (MET)	365952122.184000	365953351.8708	On-chip summing requested	N	N
Observation end date	2009-08-06T13:20:56	2009-08-06T13:42:31	Subarray requested	NONE	NONE
Read mode	CONTINUOUS	CONTINUOUS	Alternating exposures requested	N	N
			[s] Primary exposure time	0.000000	0

2.3 Aspect



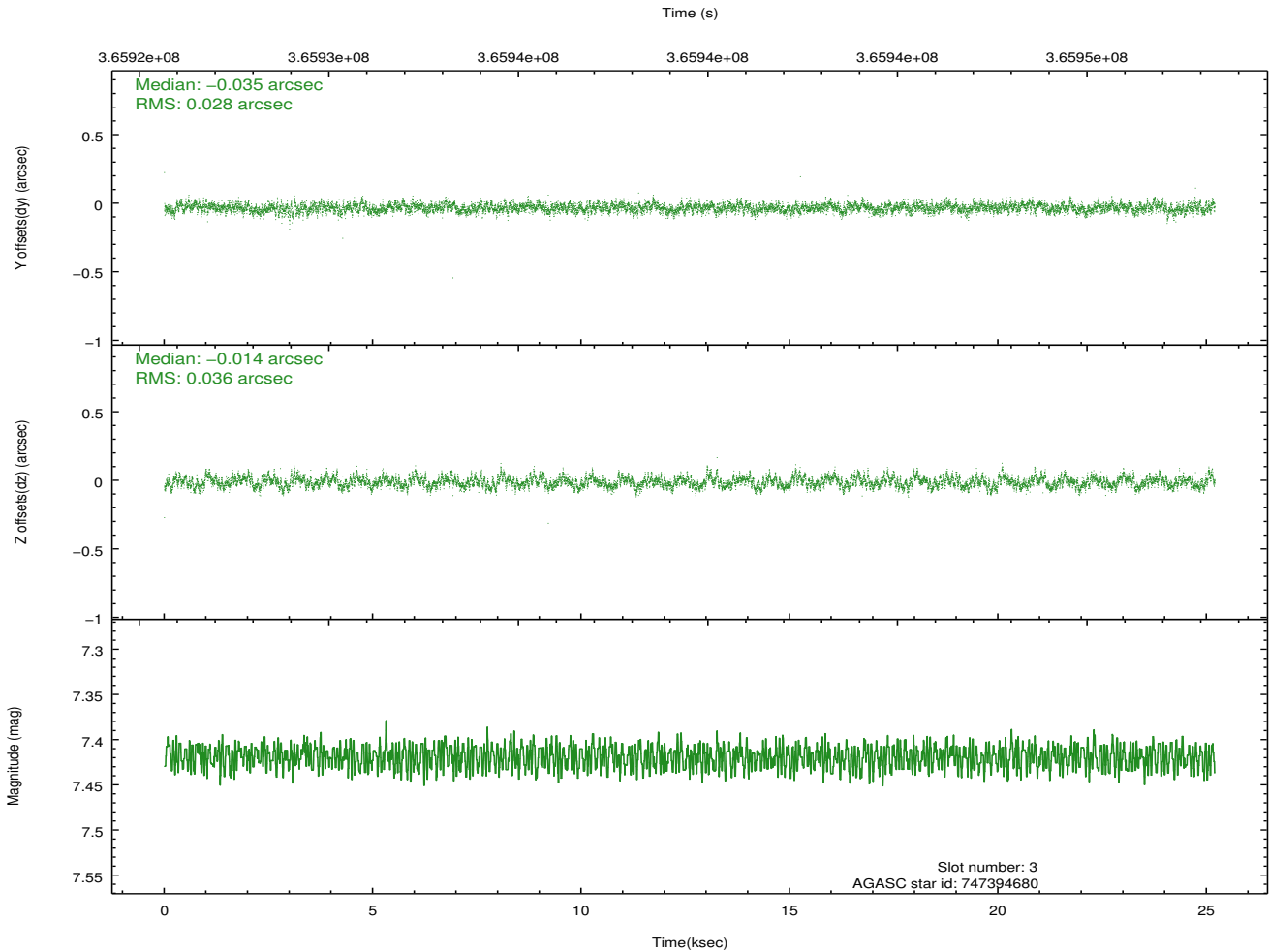
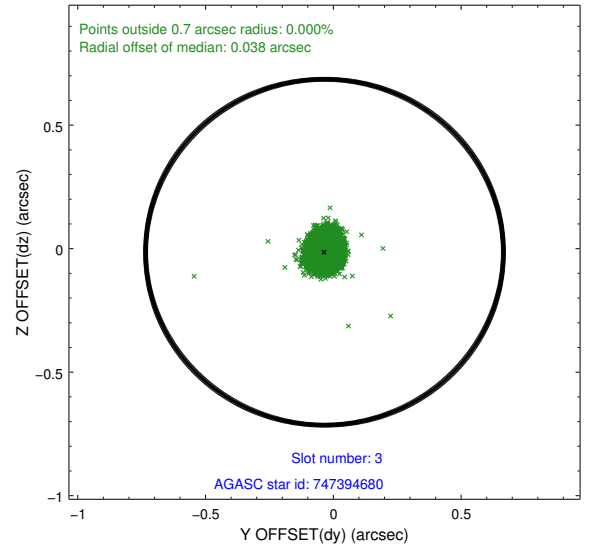
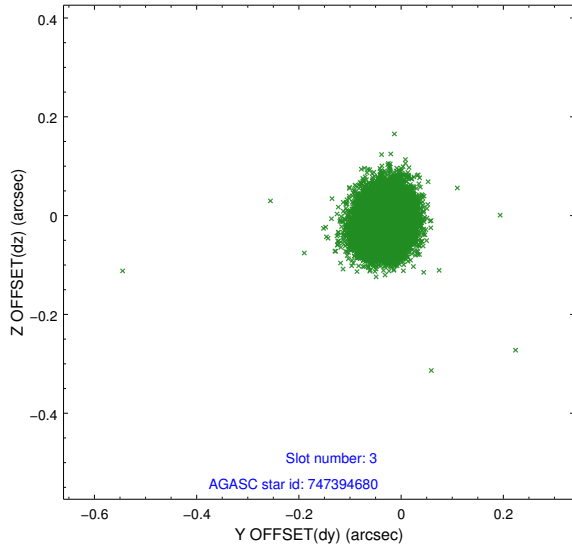


Slot Statistics

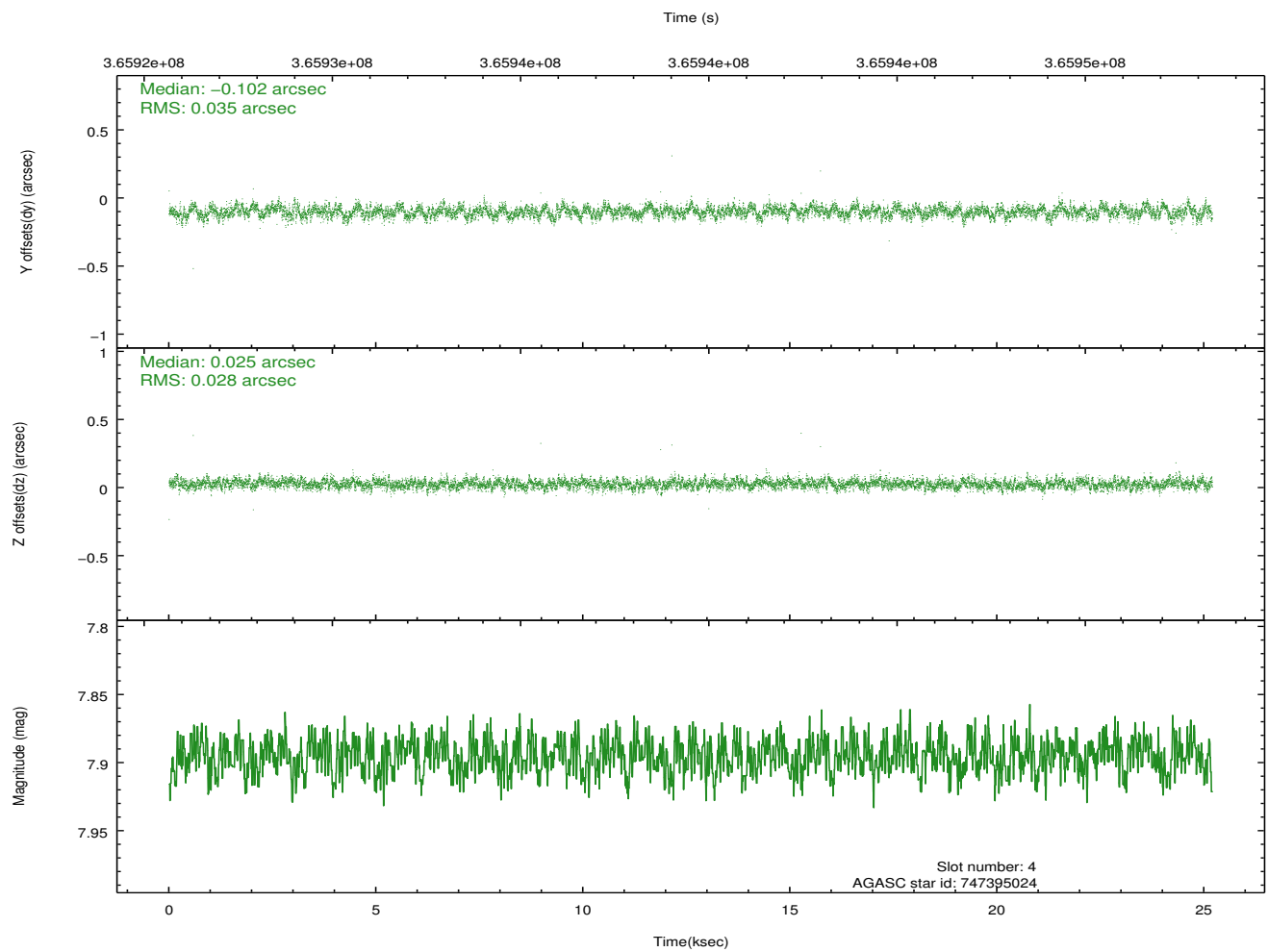
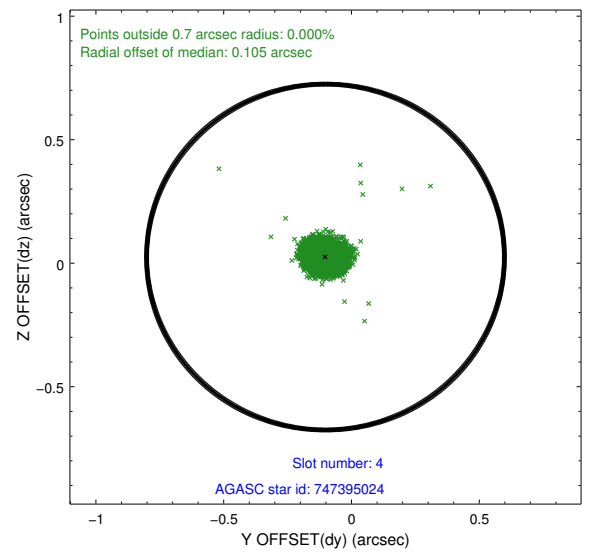
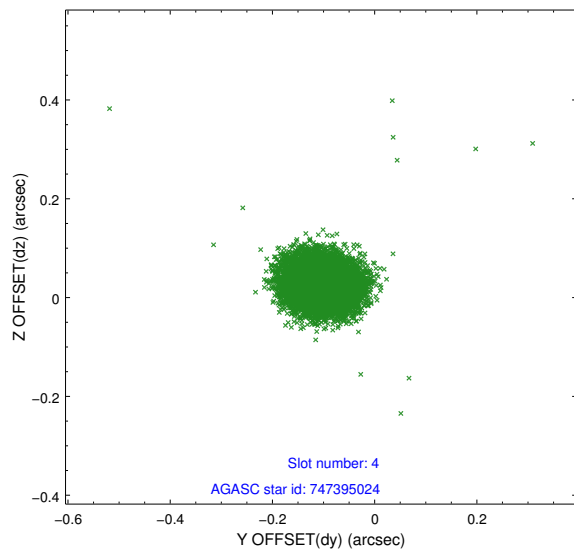
slot	status	id	mag	n_pts	med_dy	med_dz	dr1	dr2	ra	dec	mean_y	mean_z
0	FID	ACIS-S-2	7.01	6147	-0.040	-0.057	0.006	0.011	0.000000	0.000000	-765.49	-1735.42
1	FID	ACIS-S-4	7.09	6147	0.158	0.035	0.005	0.010	0.000000	0.000000	2147.91	173.06
2	FID	ACIS-S-5	7.13	6145	-0.149	0.031	0.006	0.011	0.000000	0.000000	-1818.31	166.82
3	GUIDE	747394680	7.42	12294	-0.035	-0.014	0.048	0.077	276.275759	-14.649373	-460.82	-1066.39
4	GUIDE	747395024	7.90	12293	-0.102	0.025	0.047	0.076	277.013372	-14.660681	-866.37	1470.72
5	GUIDE	821297448	7.47	12288	0.081	0.061	0.055	0.091	276.406695	-15.152775	1243.99	-300.98
6	GUIDE	747380456	8.60	12289	-0.001	-0.012	0.074	0.118	276.136187	-14.775528	71.66	-1465.24
7	GUIDE	821313912	7.14	12292	0.048	-0.062	0.068	0.125	276.880488	-15.373623	1741.33	1457.54

2.4 Star Slots

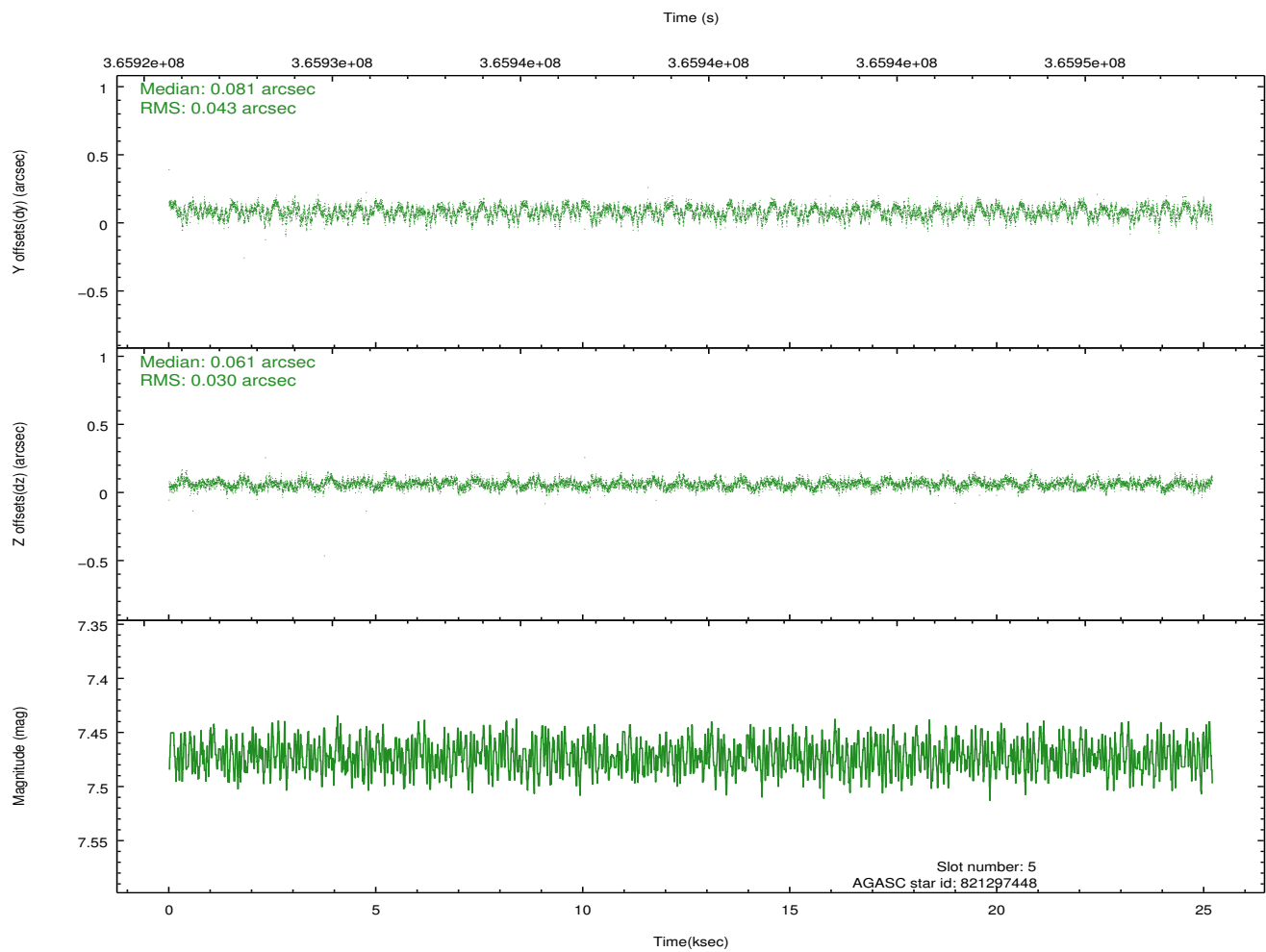
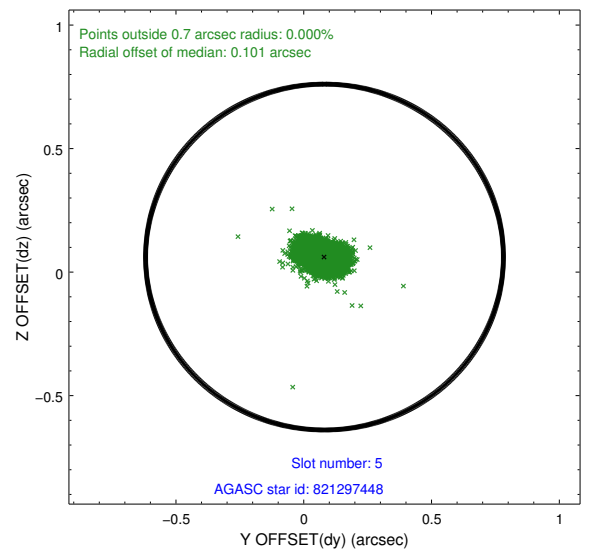
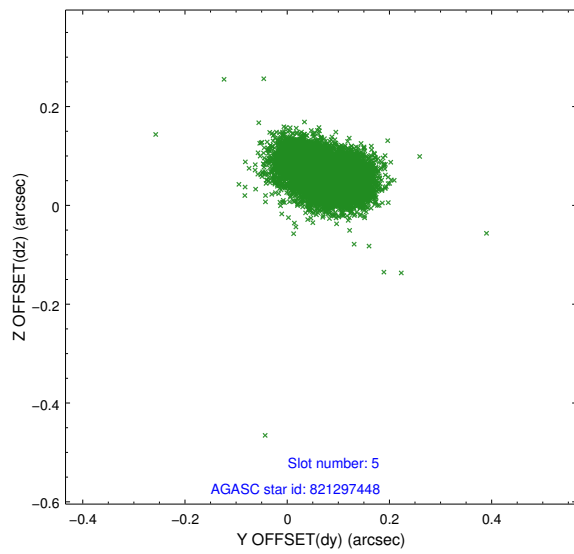
2.4.1 Slot 3



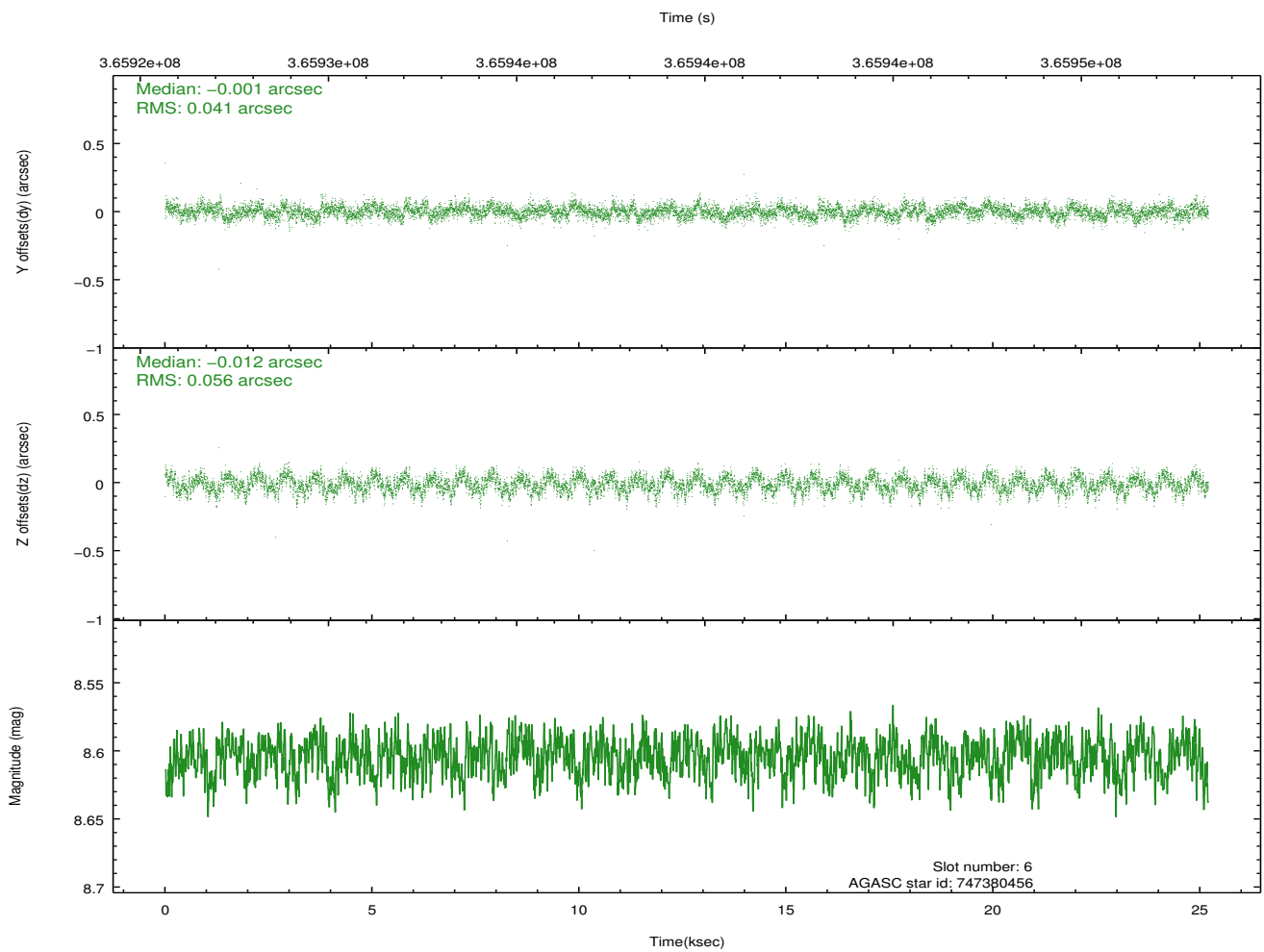
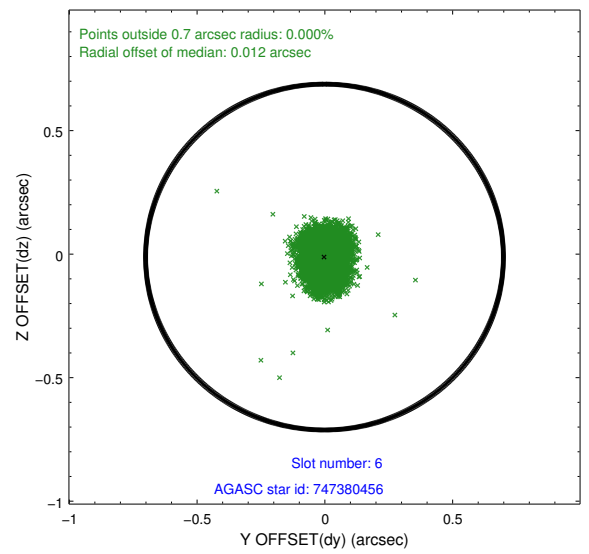
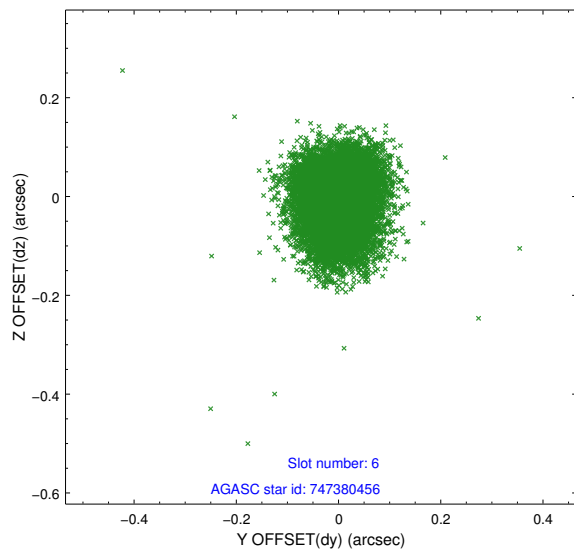
2.4.2 Slot 4



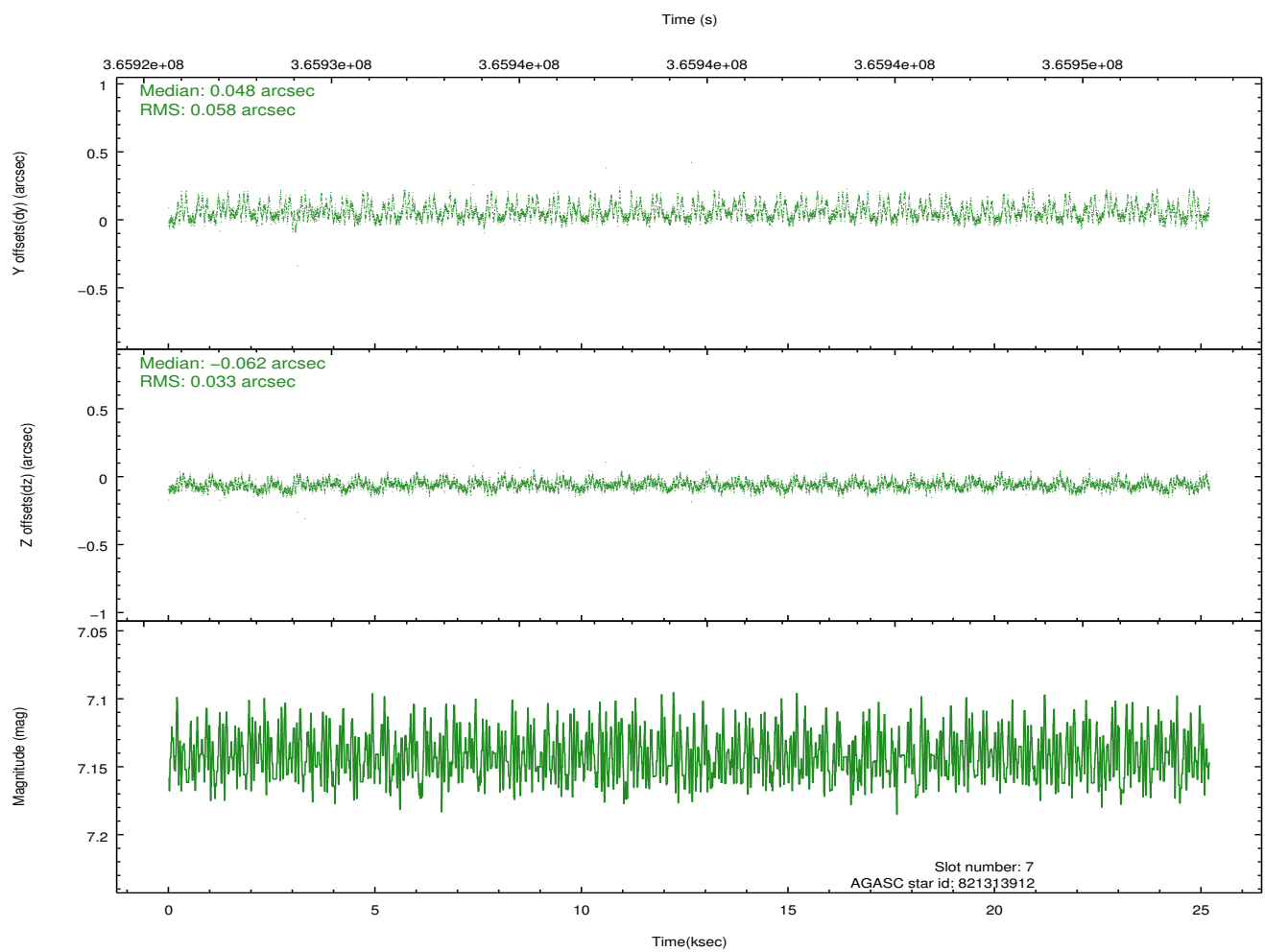
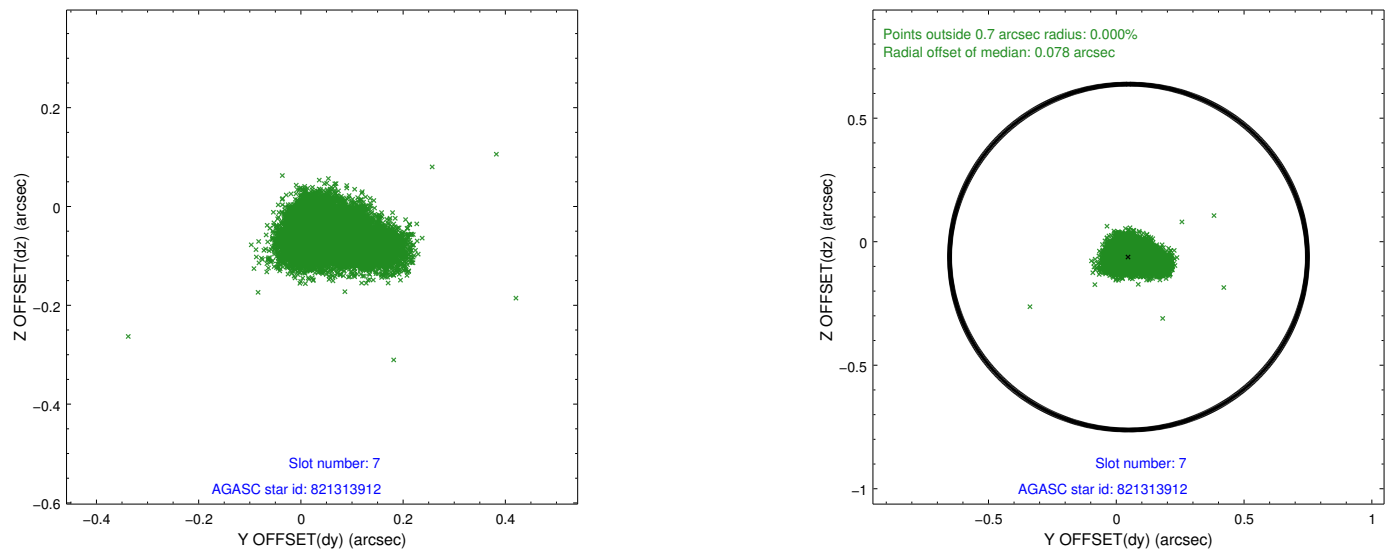
2.4.3 Slot 5



2.4.4 Slot 6

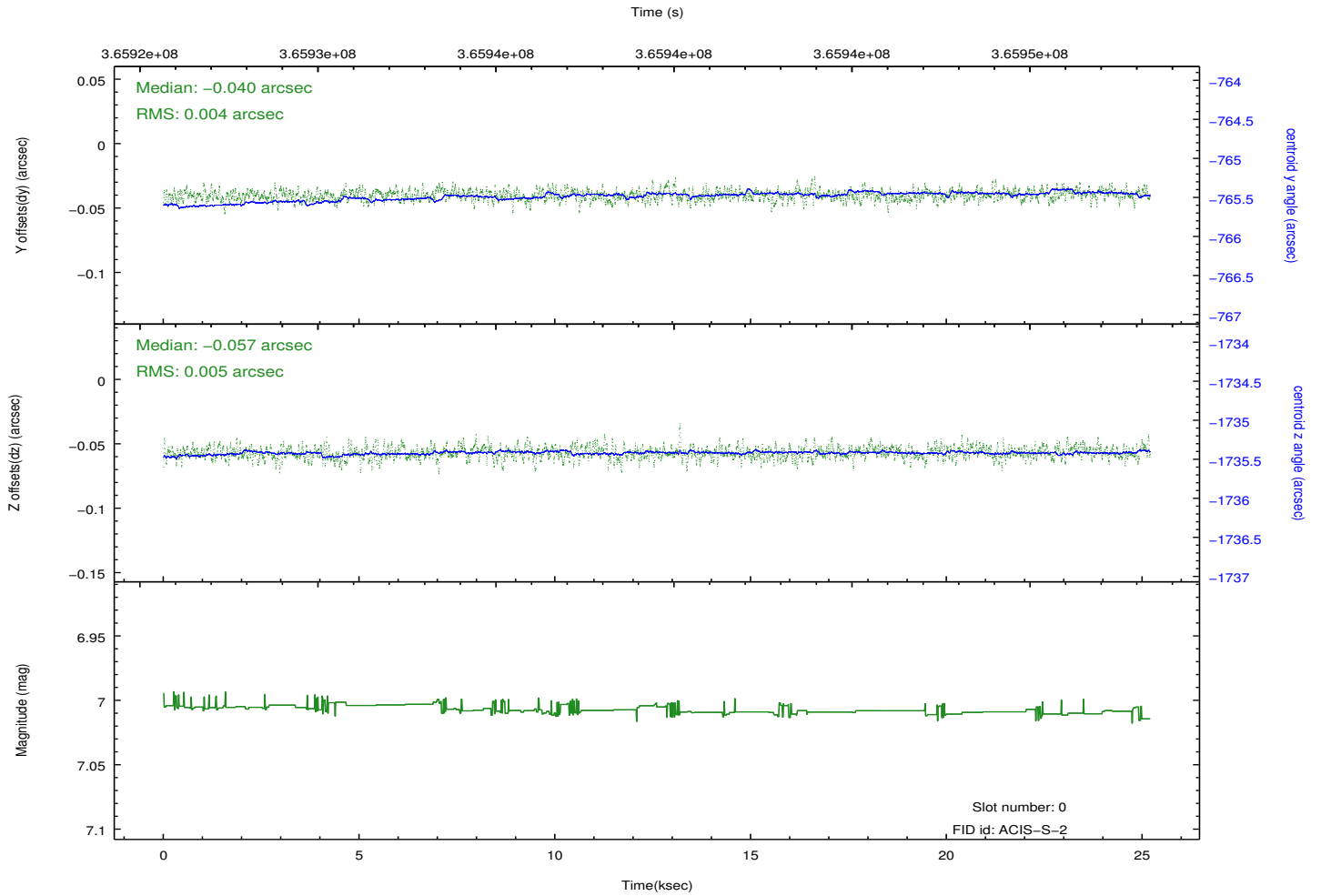
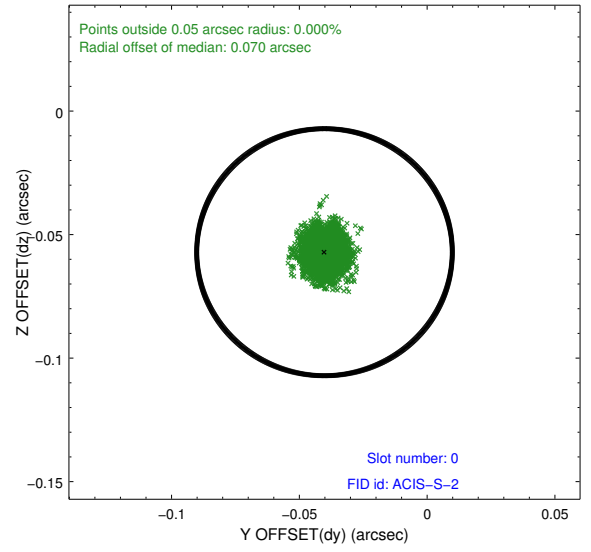
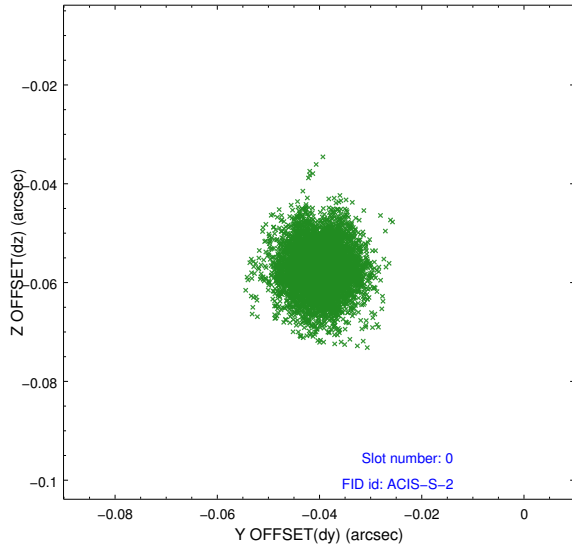


2.4.5 Slot 7

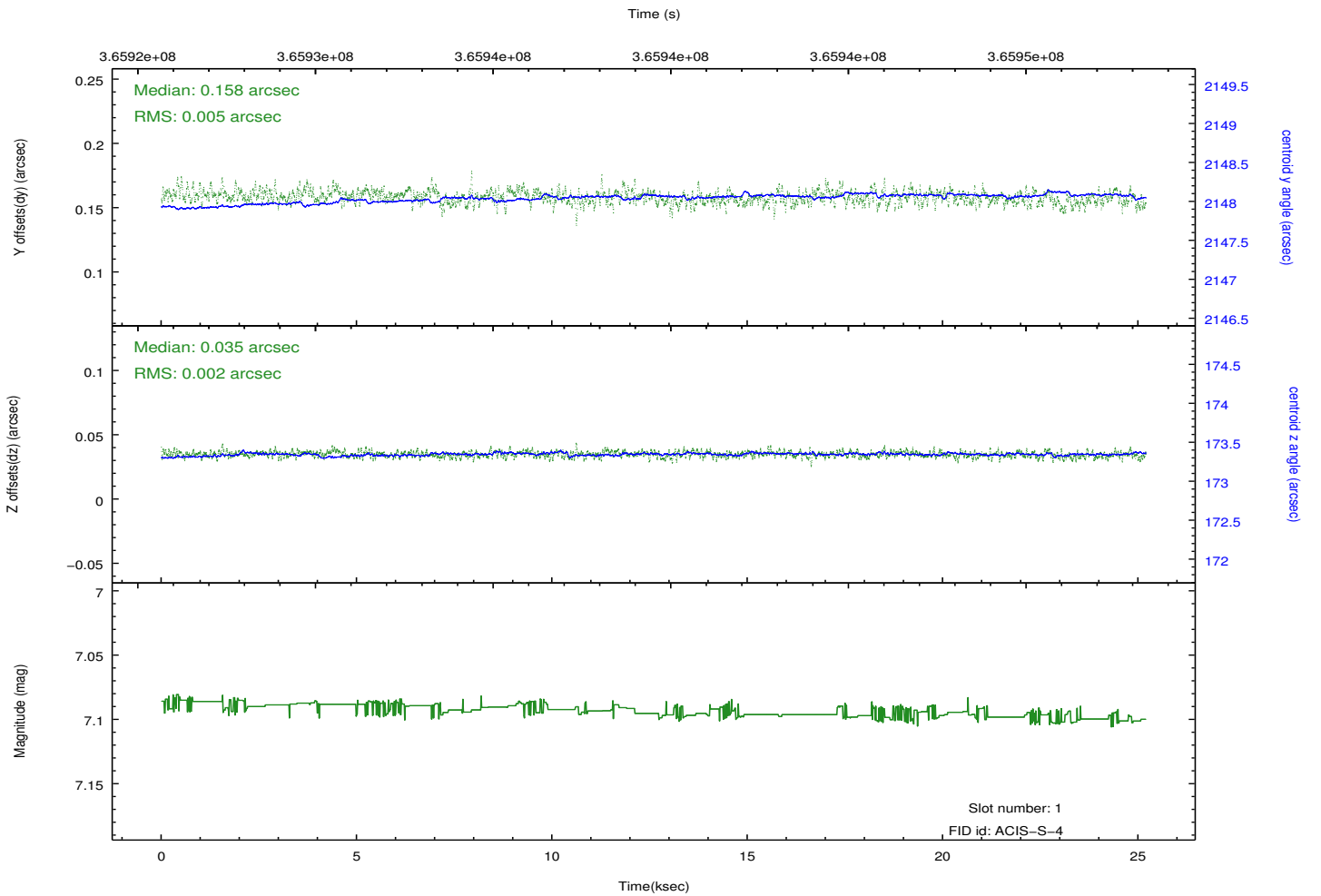
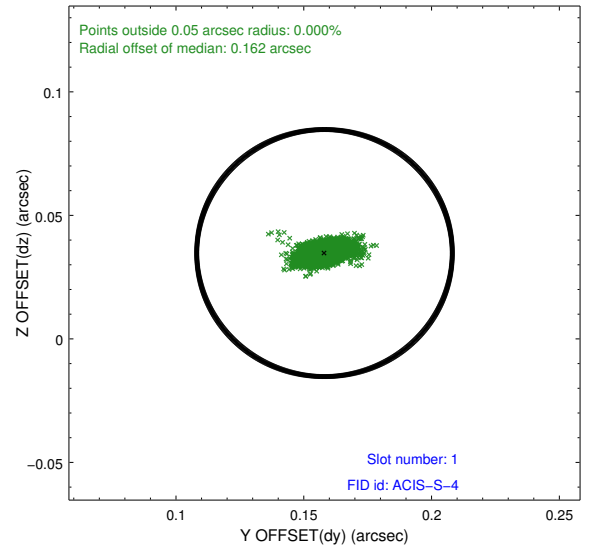
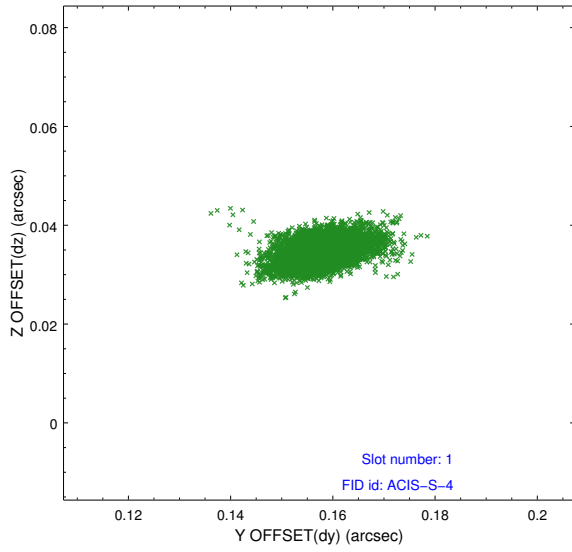


2.5 FID Slots

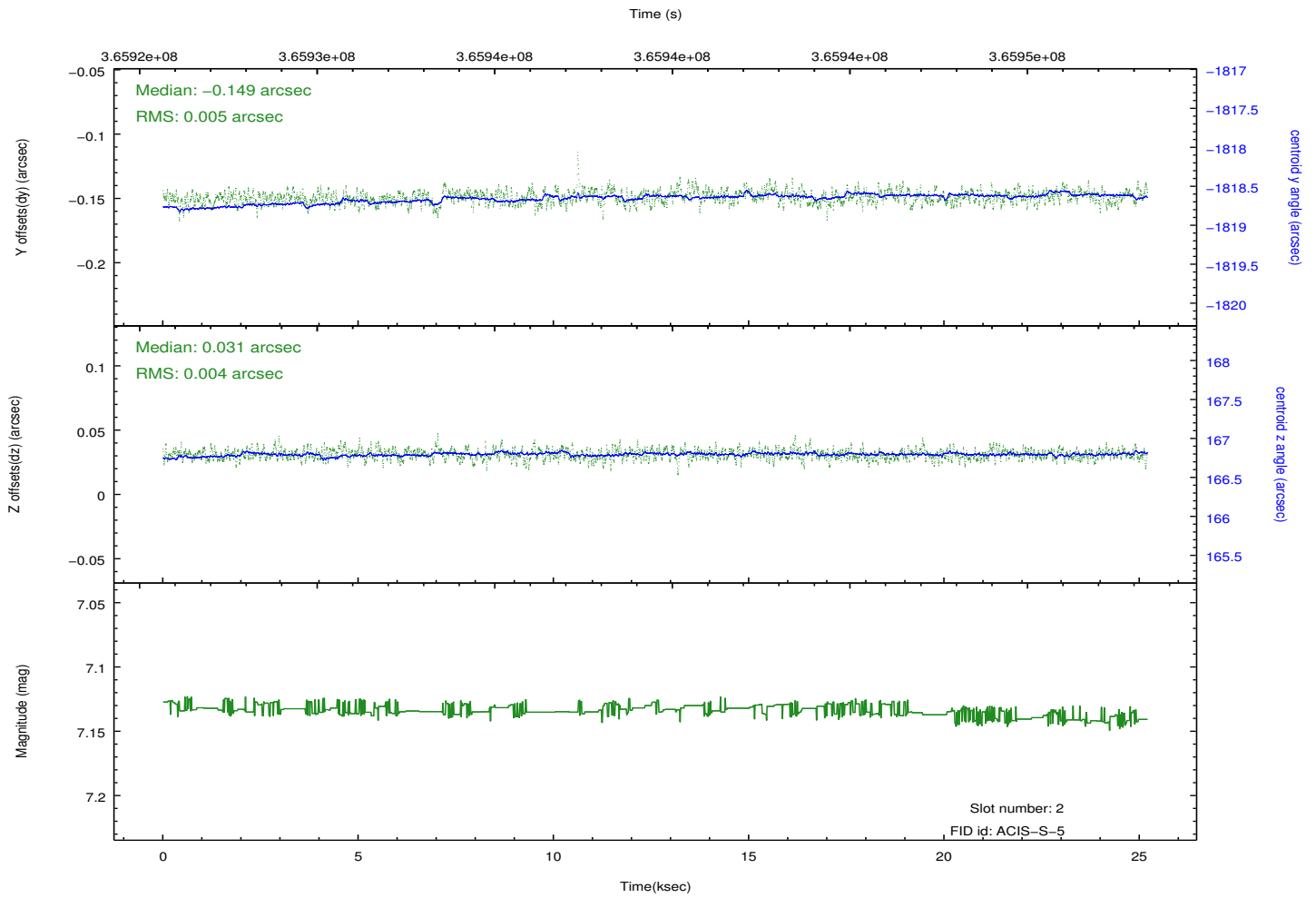
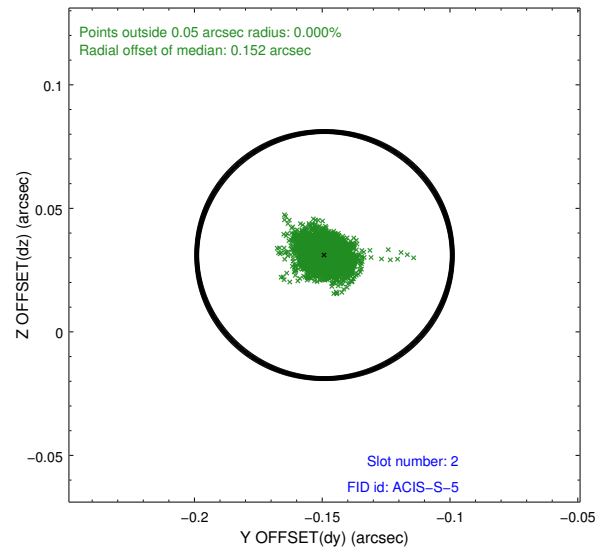
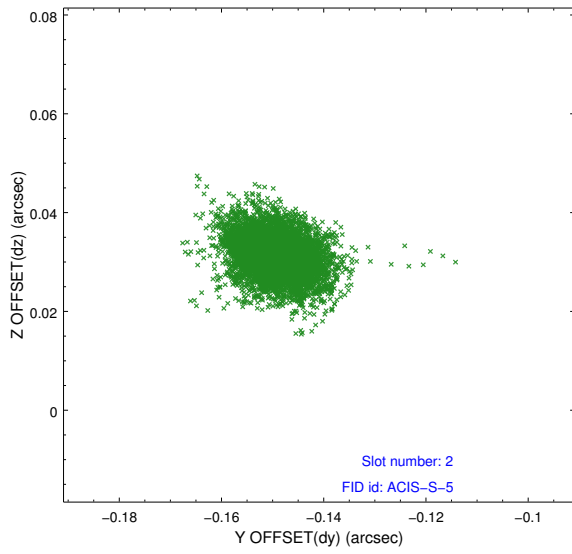
2.5.1 Slot 0



2.5.2 Slot 1



2.5.3 Slot 2



A Summary

A.1 Status

V&V Scientist	Joy Nichols
V&V Date (YYYY-MM-DD)	2012.06.13
V&V Edition	1
V&V Disposition and Status	OK
V&V Charge Time	25.081

A.2 Comments