

V&V Reference Report

L2 ASCDS Version : 8.4.5

Observation 10942 - L2 Version 2
Chandra X-Ray Center

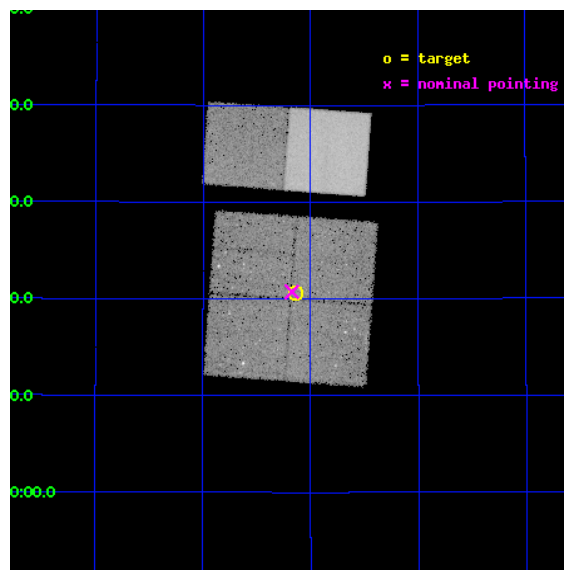
L2 Processing Date : Jun 20 2012

Contents

1	Front	2
2	OBI	3
2.1	OBI	3
2.1.1	Images	3
2.1.2	Bias	3
2.1.3	Parameters	4
2.1.4	Events	4
2.2	Compared Parameters	5
2.3	Aspect	6
2.4	Star Slots	9
2.4.1	Slot 3	9
2.4.2	Slot 4	10
2.4.3	Slot 5	11
2.4.4	Slot 6	12
2.4.5	Slot 7	13
2.5	FID Slots	14
2.5.1	Slot 0	14
2.5.2	Slot 1	15
2.5.3	Slot 2	16
A	Summary	17
A.1	Status	17
A.2	Comments	17

1 Front

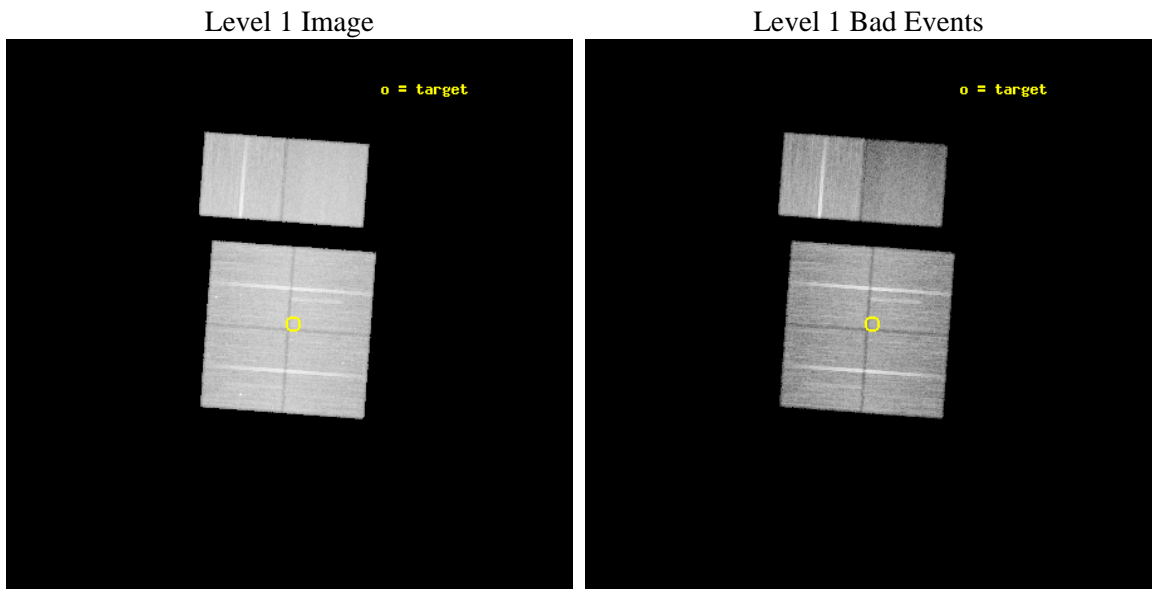
seq_num	200574	Sequence number
obs_id	10942	Observation id
title	The Chandra Cygnus OB2 Survey	Proposal title
observer	Dr. Jeremy Drake	Principal investigator
object	Cygnus OB2	Source name
dtcycle	0	
cycle	P	events from which exps? Prim/Second/Both
ra_targ	307.783547	Observer's specified target RA [deg]
dec_targ	41.342518	Observer's specified target Dec [deg]
ra_nom	307.79354048159	Nominal RA [deg]
dec_nom	41.345485702539	Nominal Dec [deg]
roll_nom	4.1747658466363	Nominal Roll [deg]
revision	2	Processing version of data
ontime	27343.436043561	Sum of GTIs [s]
livetime	26997.196992136	Livetime [s]
ontime0	27343.312923551	Sum of GTIs [s]
ontime1	27343.353933513	Sum of GTIs [s]
ontime2	27340.153993309	Sum of GTIs [s]
ontime3	27343.436043561	Sum of GTIs [s]
ontime6	27346.759093881	Sum of GTIs [s]
ontime7	27346.718053877	Sum of GTIs [s]
l2events	207748	Number of level 2 events



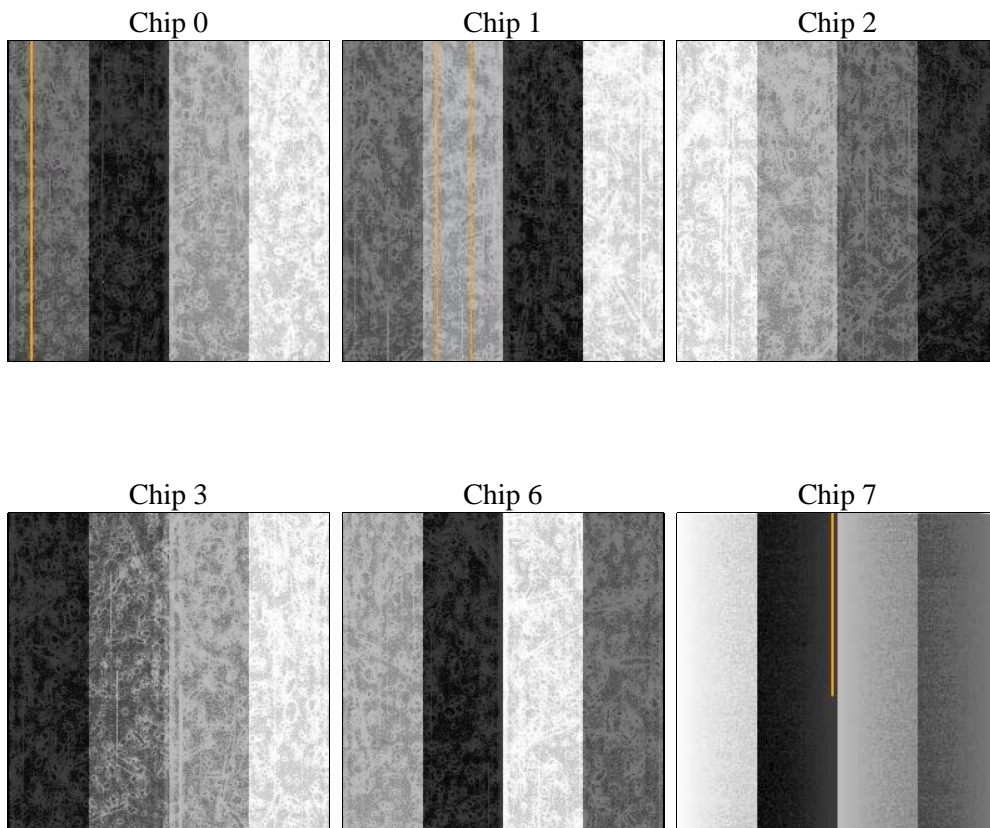
2 OBI

2.1 OBI

2.1.1 Images



2.1.2 Bias



2.1.3 Parameters

obi_num	0	Obi number	sched_exp_time	27300.000000	[s] Scheduled observation exposure time
ascdsver	8.4.5	Processing system revision	ontime	27343.436043561	Sum of GTIs [s]
caldbver	4.4.10	 	ontime0	27343.312923551	Sum of GTIs [s]
date	2012-06-20T13:02:35	Date and time of file creation	ontime1	27343.353933513	Sum of GTIs [s]
revision	2	Processing version of data	ontime2	27340.153993309	Sum of GTIs [s]
			ontime3	27343.436043561	Sum of GTIs [s]
			ontime6	27346.759093881	Sum of GTIs [s]
			ontime7	27346.718053877	Sum of GTIs [s]
			l1events	1279663	Number of level 1 events

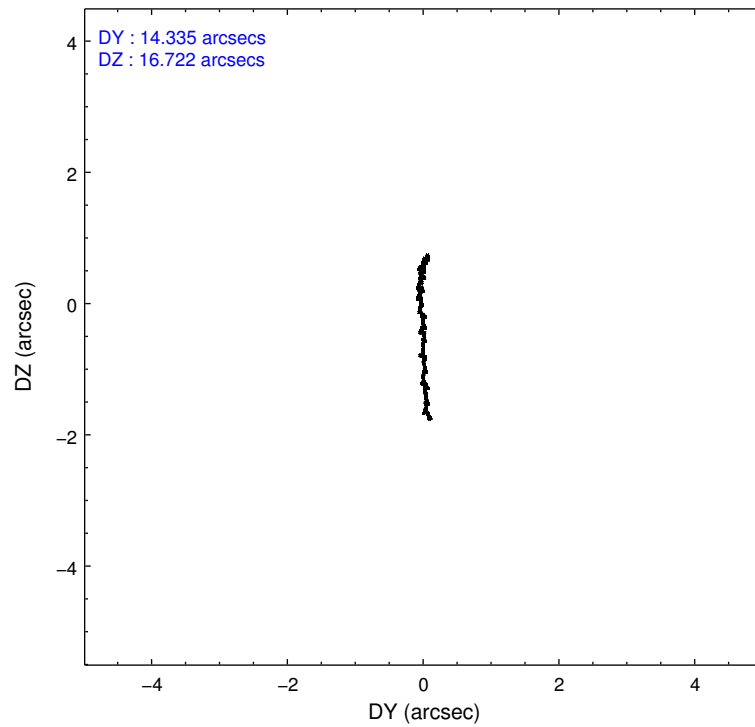
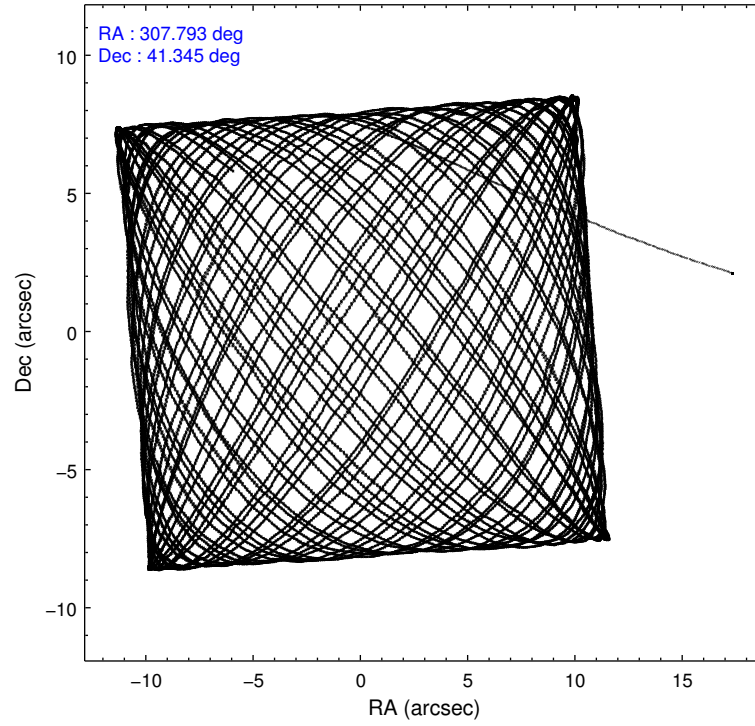
2.1.4 Events

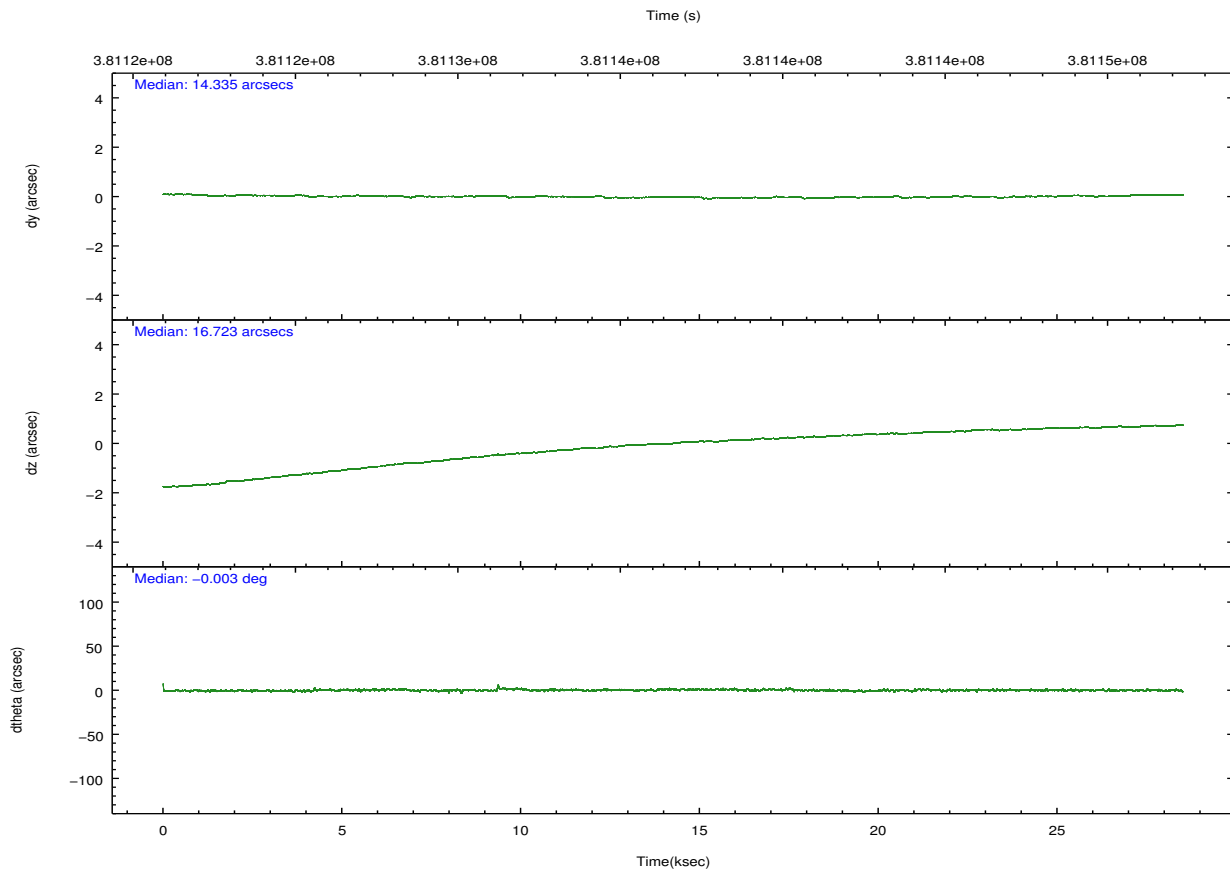
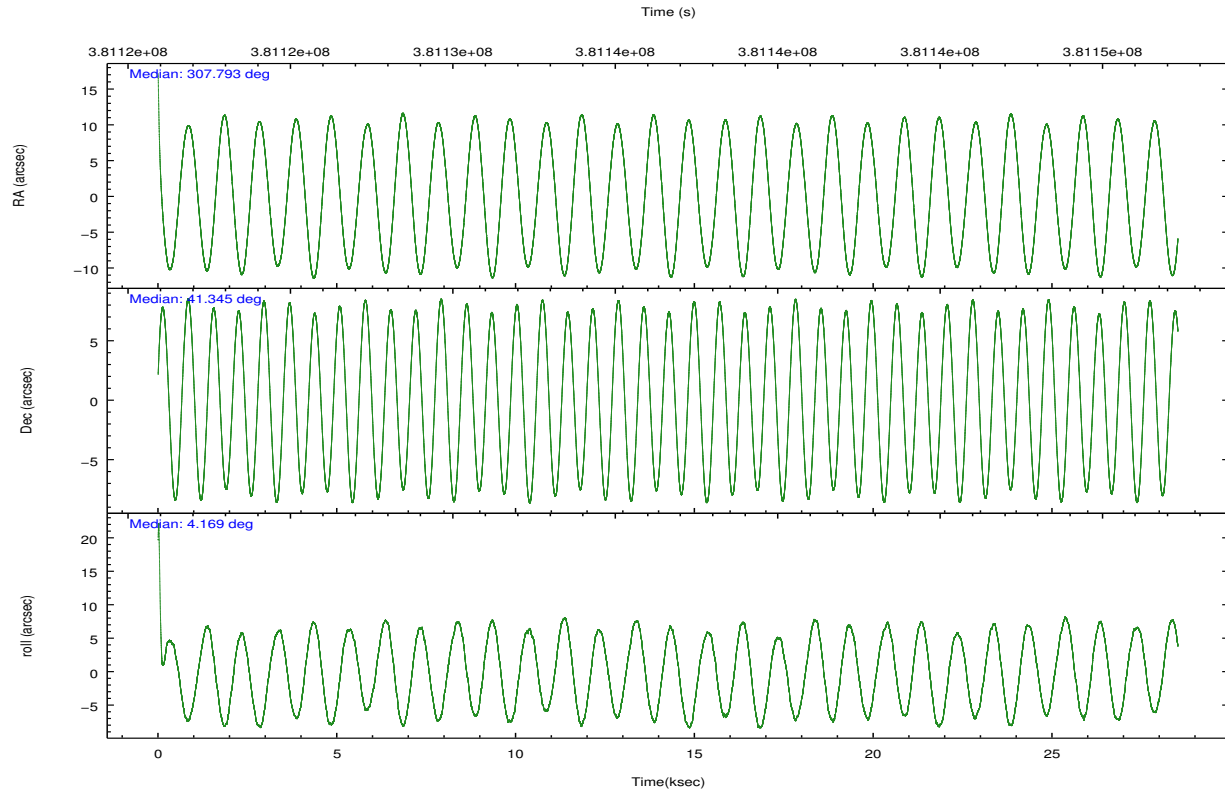
	ccd 0	ccd 1	ccd 2	ccd 3	ccd 6	ccd 7		ccd 0	ccd 1	ccd 2	ccd 3	ccd 6	ccd 7
level 1 events	202781	202793	218396	213878	224454	217361	grade 0 events	11022	10225	10777	9144	9759	10972
rejected events	176706	176698	193415	191312	199748	110227		5%	5%	4%	4%	4%	5%
rejected %	87%	87%	88%	89%	88%	50%	grade 1 events	125	115	162	134	127	346
								0%	0%	0%	0%	0%	0%
							grade 2 events	5946	5689	5550	4738	5346	23186
								2%	2%	2%	2%	2%	10%
							grade 3 events	2602	2717	2316	2327	2447	9890
								1%	1%	1%	1%	1%	4%
							grade 4 events	2397	2662	2407	2374	2379	9738
								1%	1%	1%	1%	1%	4%
							grade 5 events	6970	7437	6542	7760	7883	23117
								3%	3%	2%	3%	3%	10%
							grade 6 events	4111	4803	3933	3986	4777	53359
								2%	2%	1%	1%	2%	24%
							grade 7 events	169608	169145	186709	183415	191736	86753
								83%	83%	85%	85%	85%	39%

2.2 Compared Parameters

Parameter	Planned	Actual	Parameter	Planned	Actual
Instrument	ACIS	ACIS	Obspar format version number	7	7
Detector	ACIS-012367	ACIS-012367	Obspar file type	PREDICTED	ACTUAL
Grating	NONE	NONE	Obspar update status	NONE	UPDATED
Data mode	VFAINT	VFAINT	CCD I0 on	Y	Y
Observation mode	POINTING	POINTING	CCD I1 on	Y	Y
[deg] Pointing RA	307.763351	307.7935404815904	CCD I2 on	Y	Y
[deg] Pointing Dec	41.329931	41.3454857025395	CCD I3 on	Y	Y
[deg] Pointing Roll	3.986008	4.174765846636326	CCD S0 on	N	N
[mm] SIM focus pos	-0.782348	-0.7809083437167272	CCD S1 on	N	N
[mm] SIM defocus	0	0.001439871863259334	CCD S2 on	O2	Y
[mm] SIM translation stage pos	-233.592463	-233.5874344608287	CCD S3 on	O1	Y
[mm] SIM translation stage offset	0	-0.005018542100998502	CCD S4 on	N	N
[s] Observation start time (MET)	381123591.184000	381121321.08466	CCD S5 on	N	N
Observation start date	2010-01-29T03:38:45	2010-01-29T03:02:01	Number of optional ACIS chips dropped	0	0
[s] Observation end time (MET)	381150891.184000	381152337.07373	On-chip summing requested	N	N
Observation end date	2010-01-29T11:13:45	2010-01-29T11:38:57	Subarray requested	NONE	NONE
Read mode	TIMED	TIMED	Alternating exposures requested	N	N
			[s] Primary exposure time	0.000000	3.2

2.3 Aspect



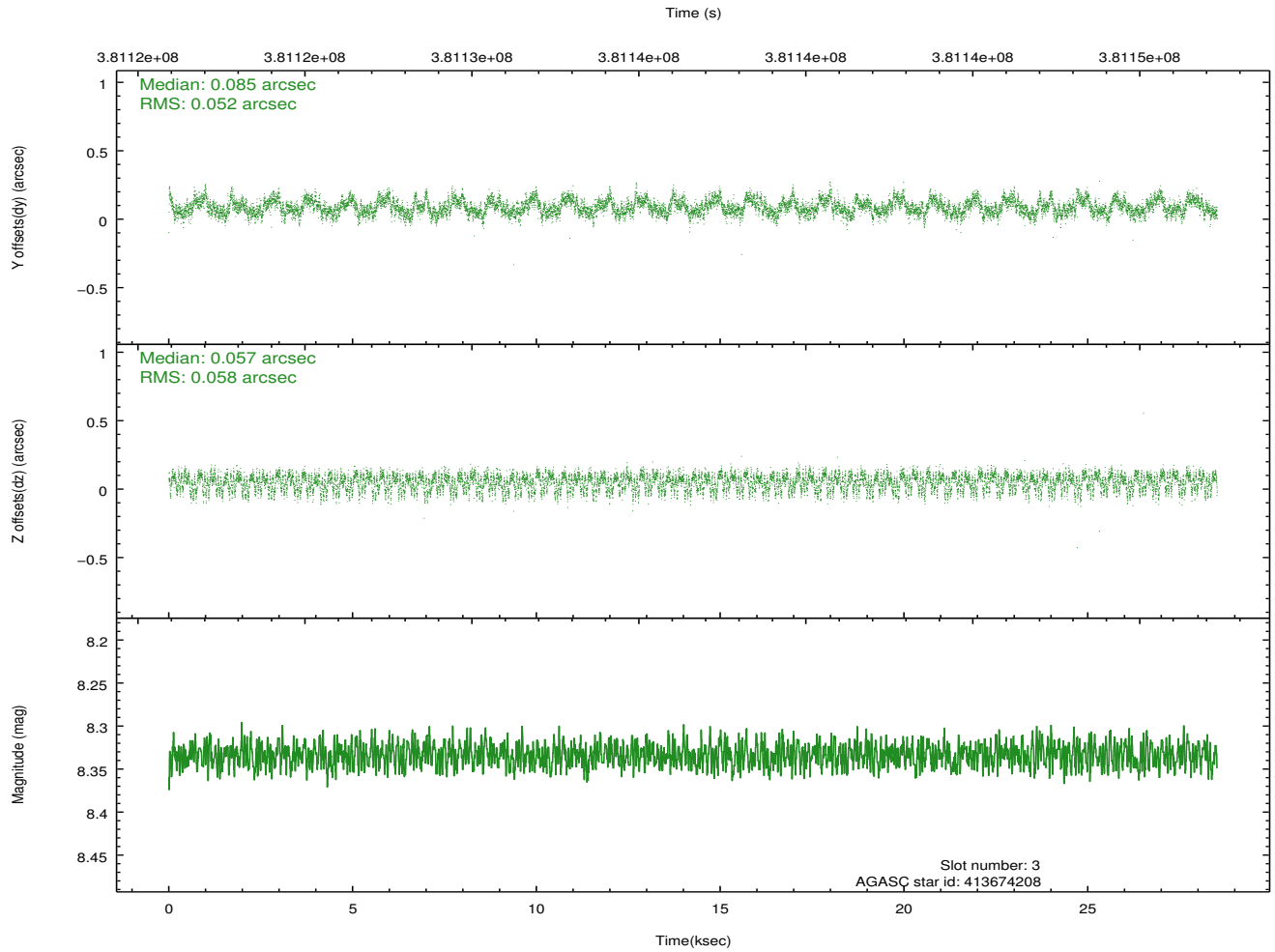
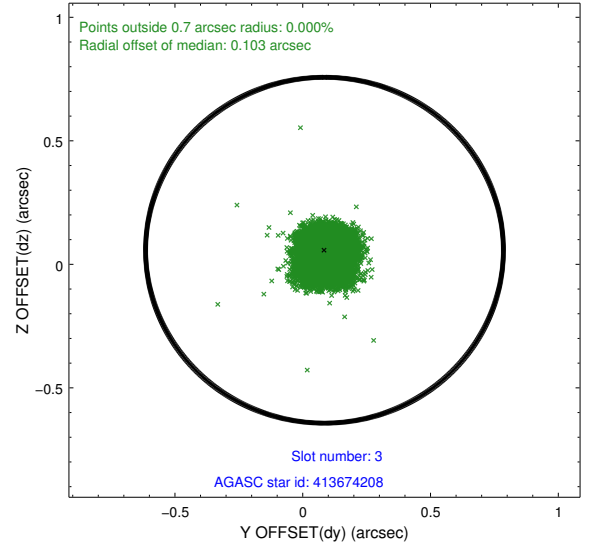
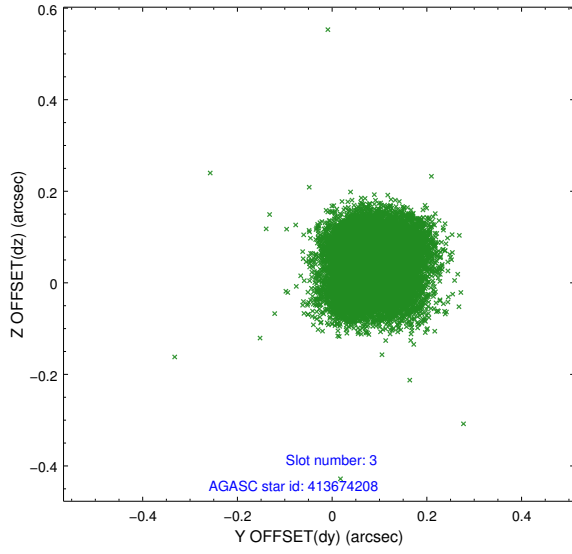


Slot Statistics

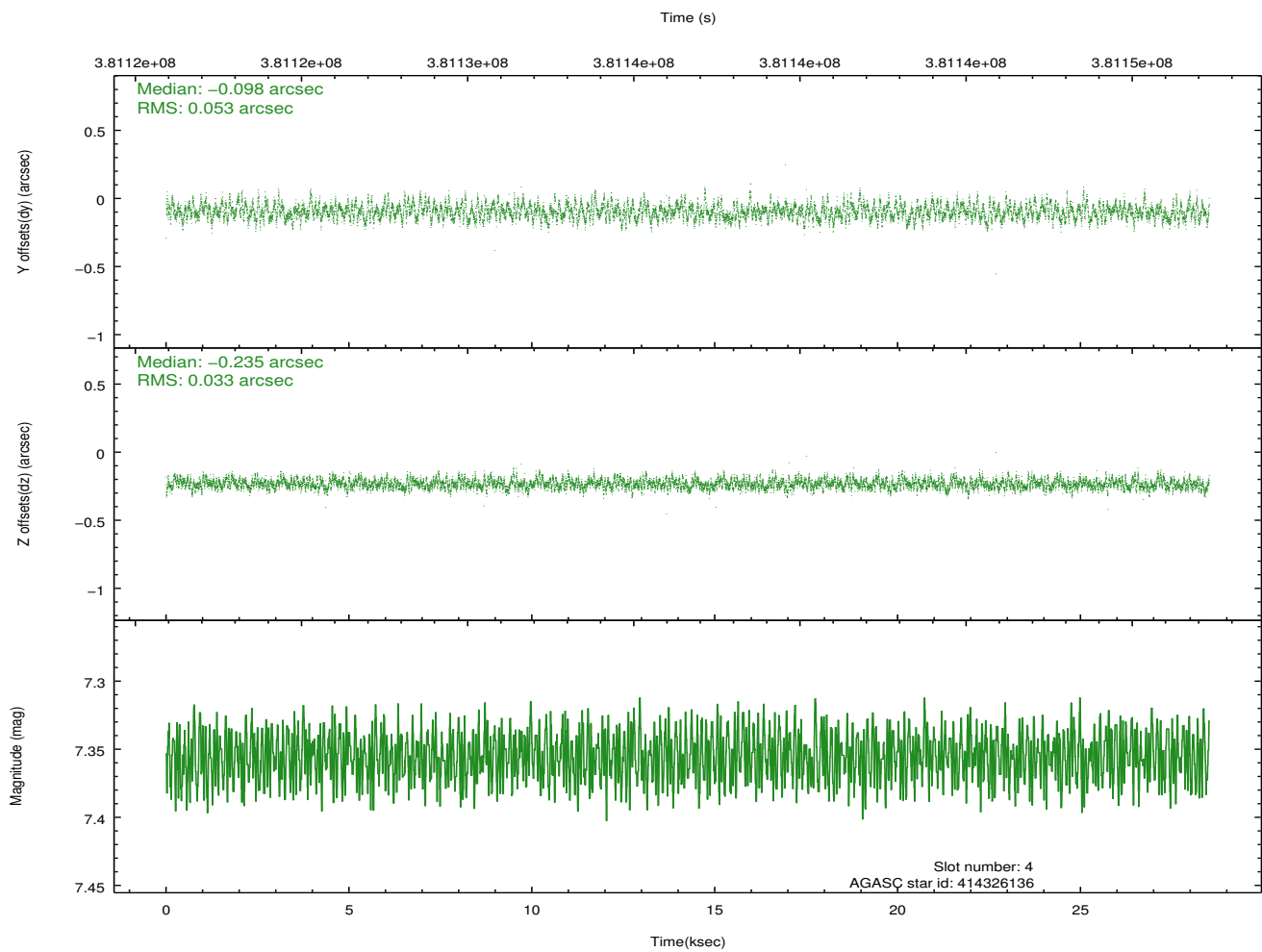
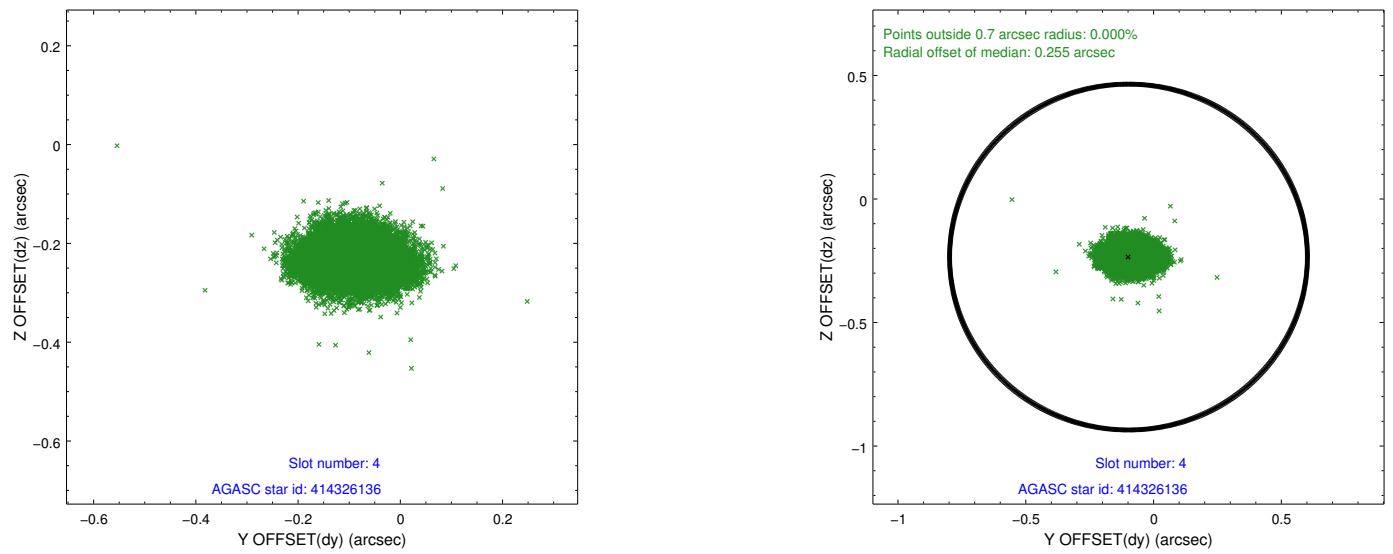
slot	status	id	mag	n_pts	med_dy	med_dz	dr1	dr2	ra	dec	mean_y	mean_z
0	FID	ACIS-I-2	6.96	6956	-0.104	-0.086	0.016	0.028	0.000000	0.000000	-769.12	-846.62
1	FID	ACIS-I-4	6.96	6955	0.194	0.085	0.009	0.014	0.000000	0.000000	2145.17	1059.71
2	FID	ACIS-I-5	7.03	6956	-0.190	0.070	0.013	0.021	0.000000	0.000000	-1822.95	1057.60
3	GUIDE	413674208	8.33	13902	0.085	0.057	0.084	0.132	307.139504	40.901877	-1799.58	-1413.14
4	GUIDE	414326136	7.36	13911	-0.098	-0.235	0.066	0.108	308.256176	41.473642	1362.51	427.87
5	GUIDE	413677656	8.44	13904	-0.085	-0.030	0.090	0.143	307.023952	40.610384	-2194.83	-2435.09
6	GUIDE	413803744	8.86	13899	0.152	0.068	0.086	0.143	308.586342	40.704904	2085.69	-2389.73
7	GUIDE	414199536	8.59	13898	-0.052	0.141	0.087	0.142	307.117380	41.957142	-1567.72	2379.25

2.4 Star Slots

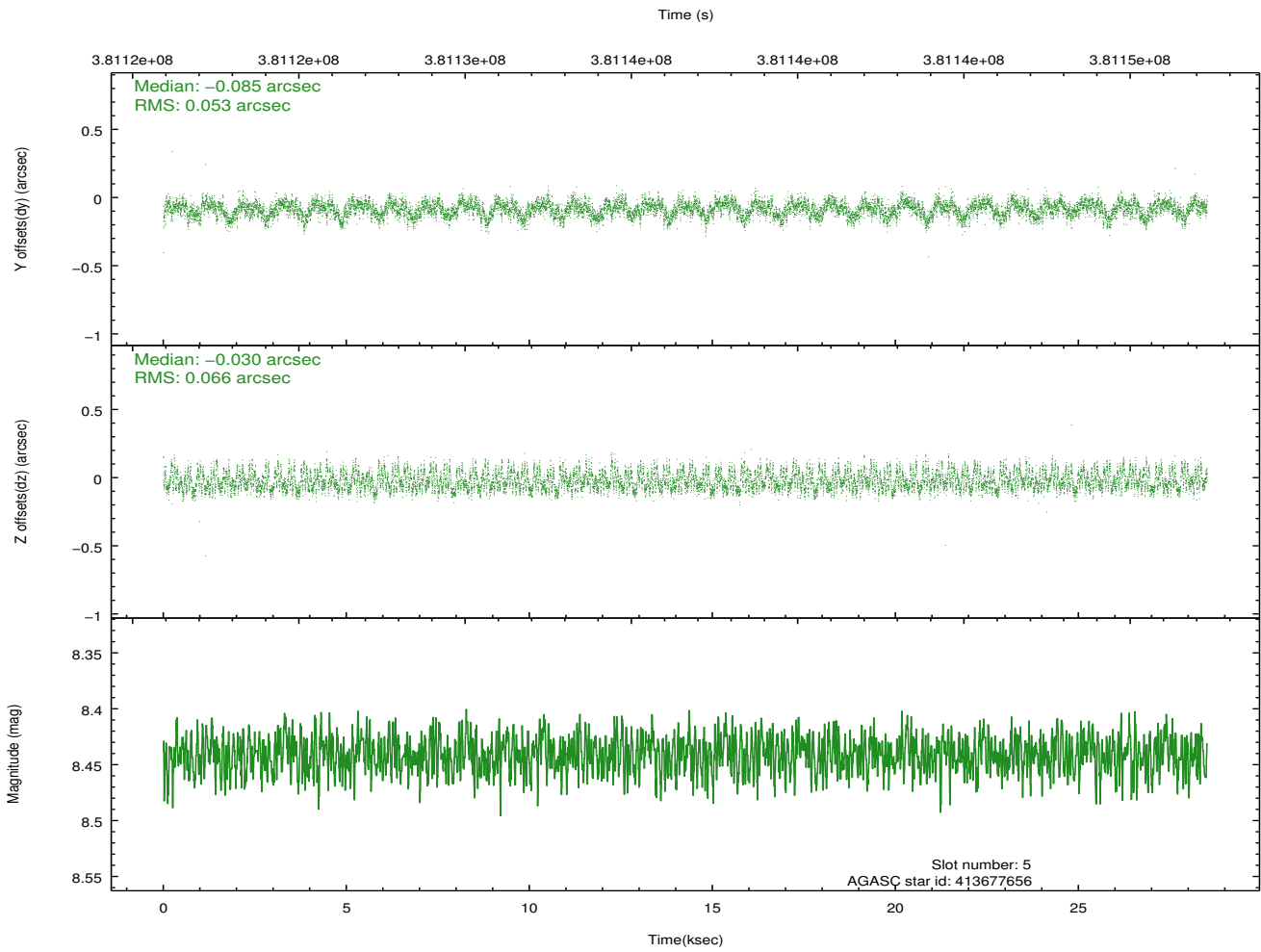
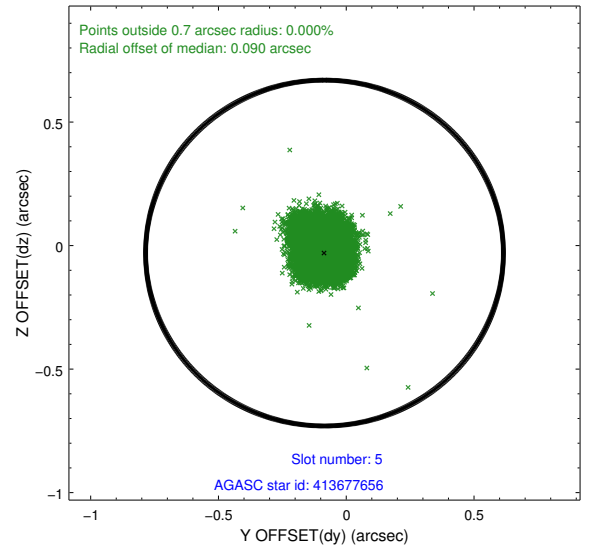
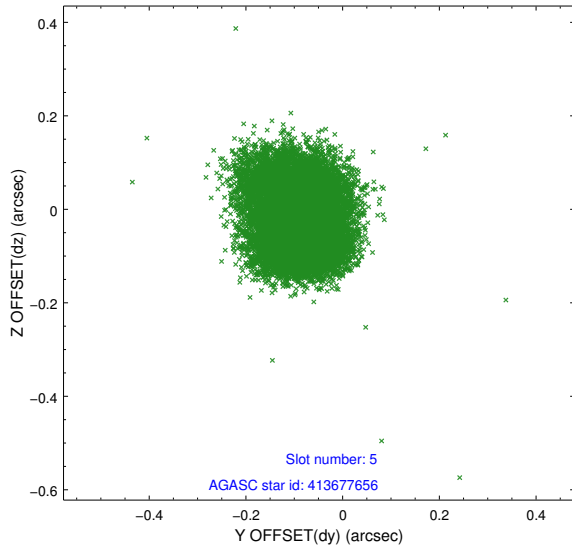
2.4.1 Slot 3



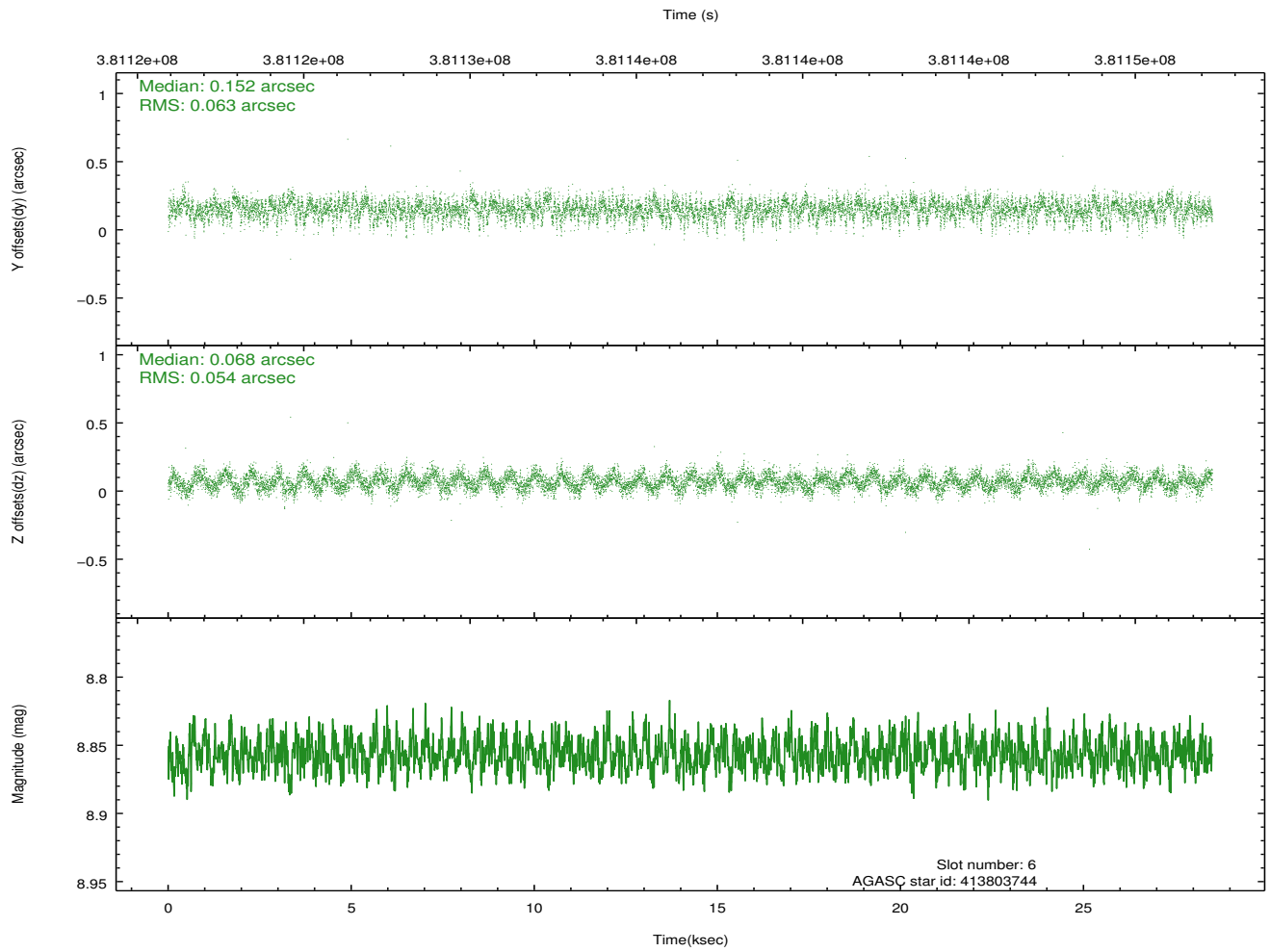
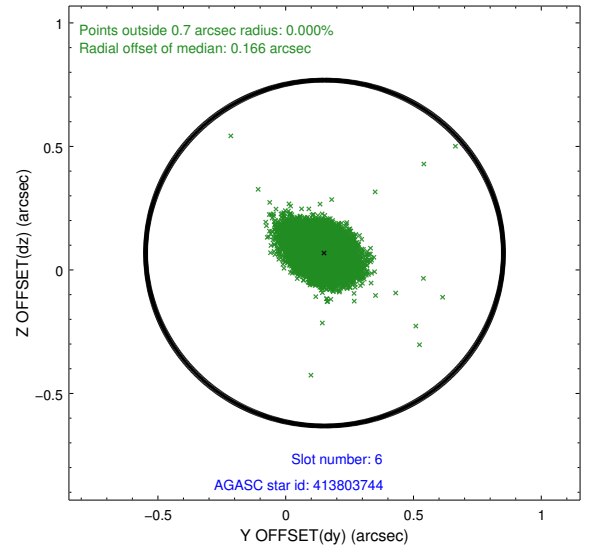
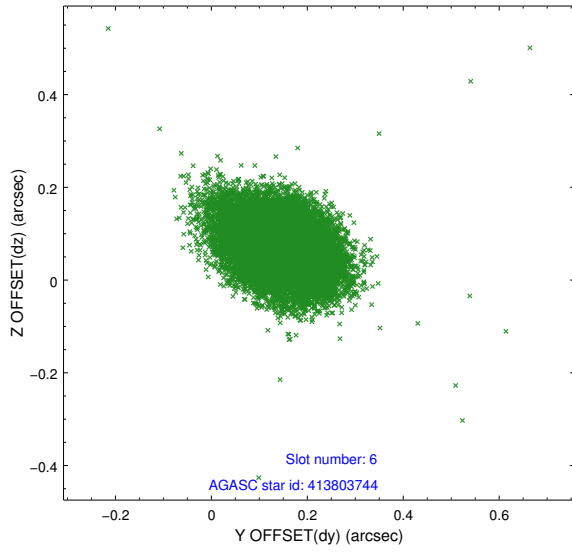
2.4.2 Slot 4



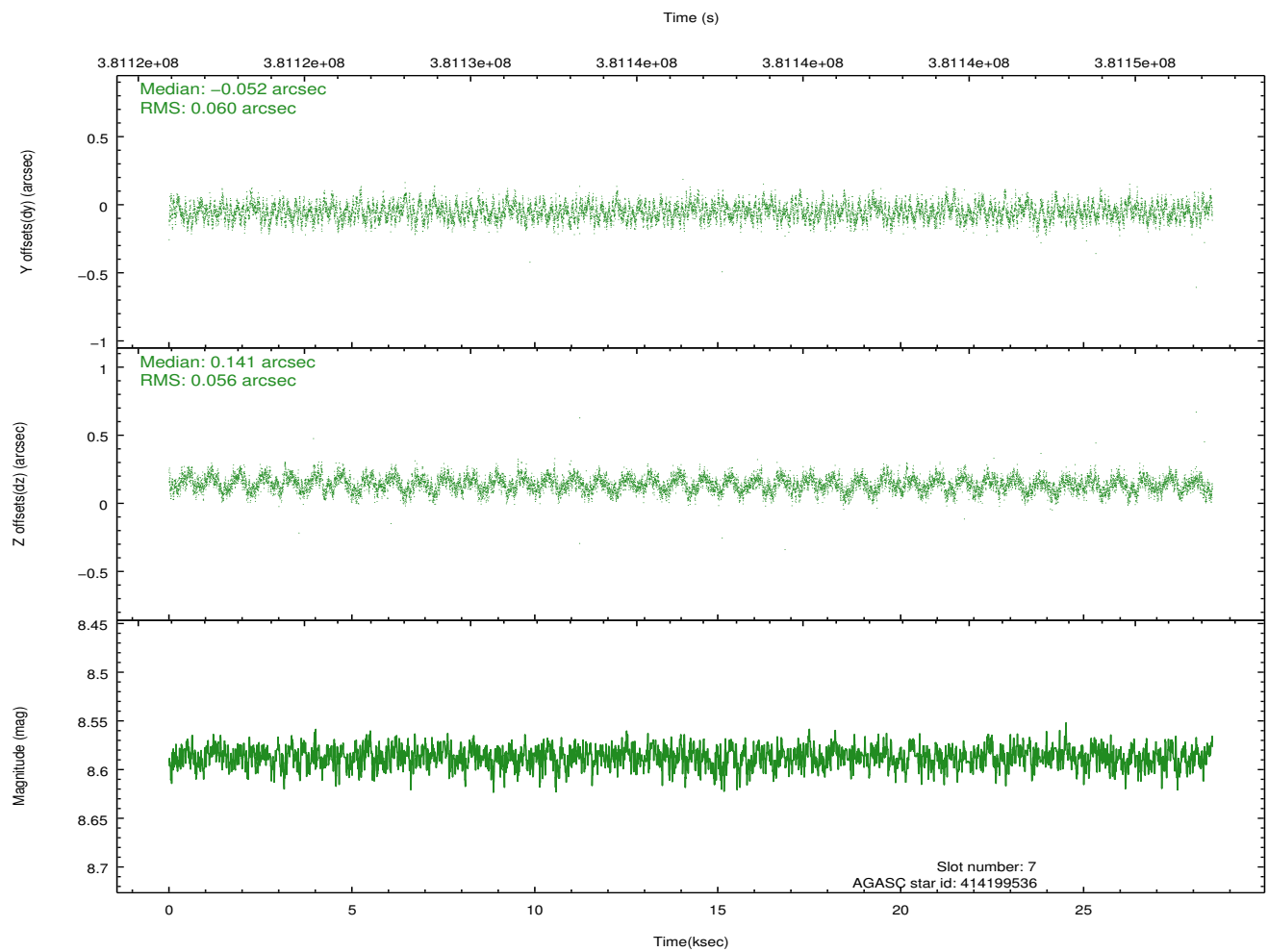
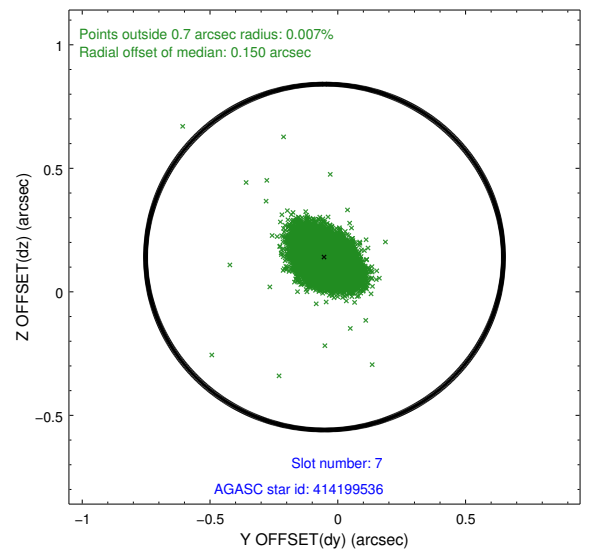
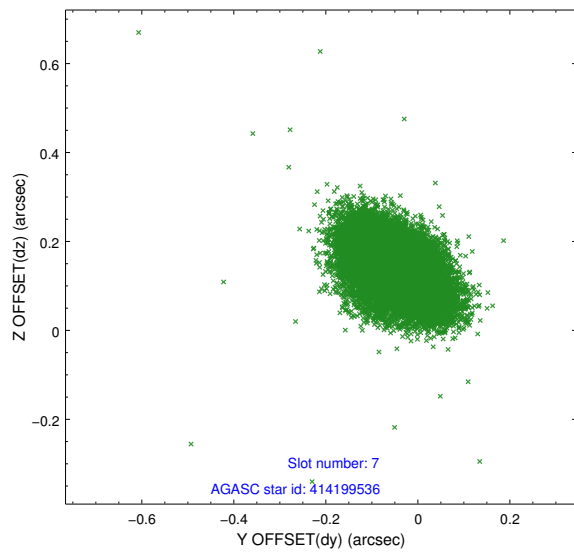
2.4.3 Slot 5



2.4.4 Slot 6

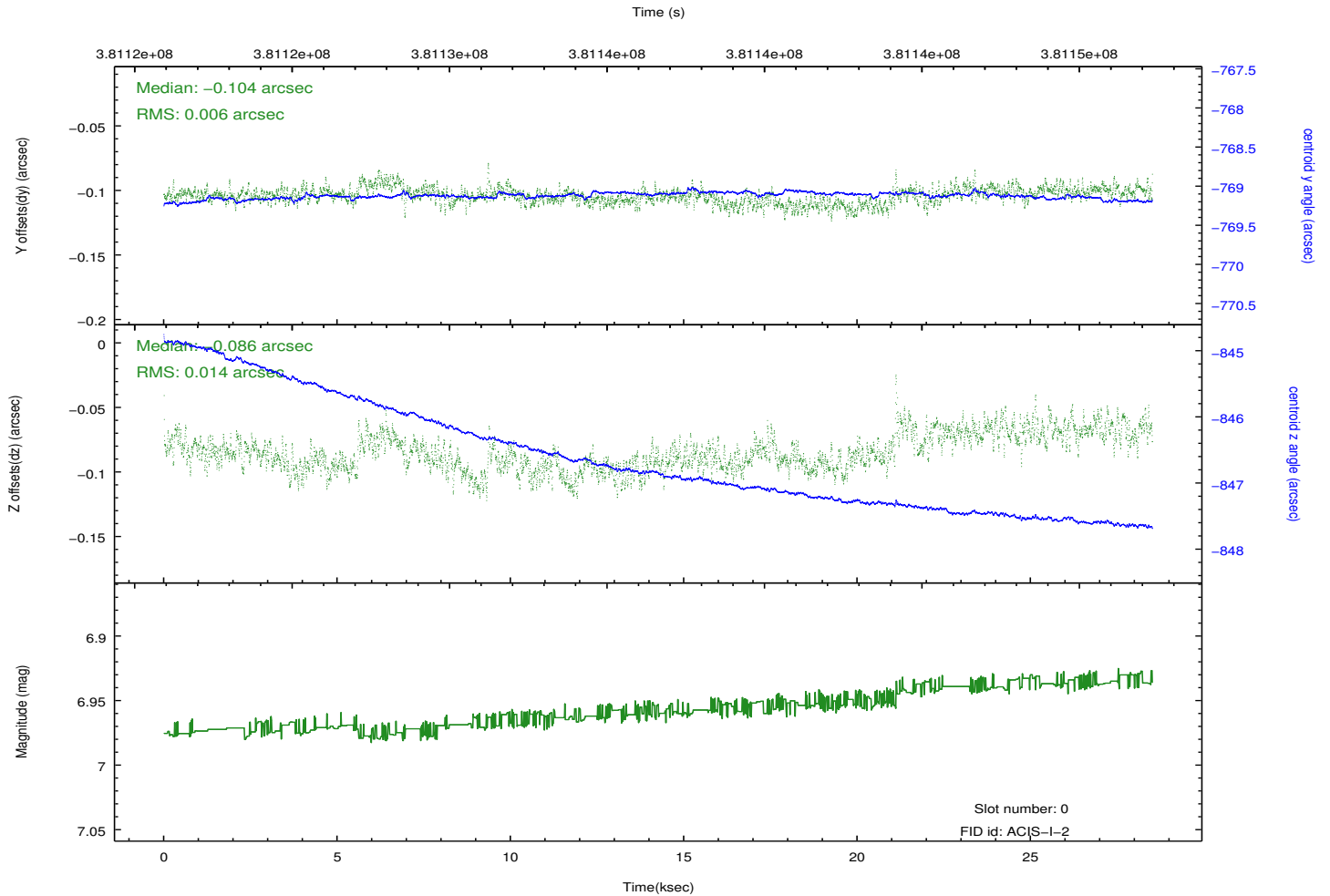
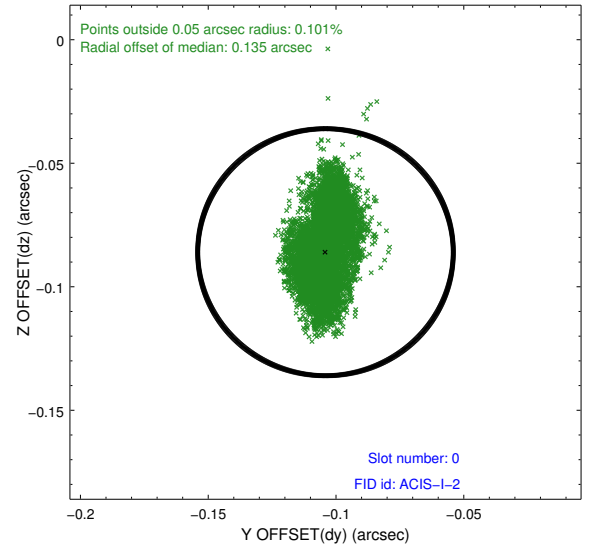
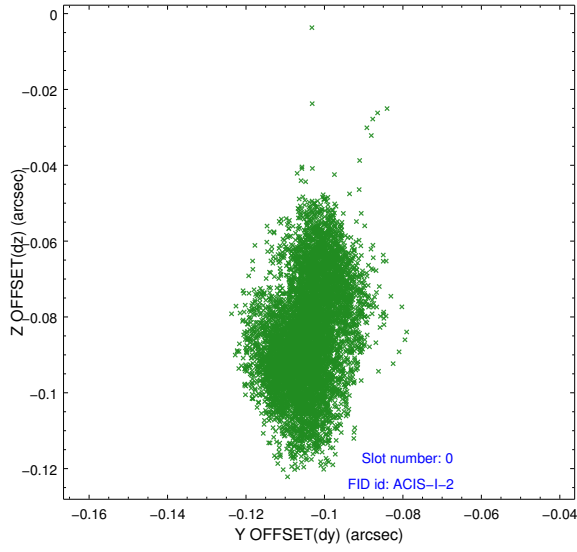


2.4.5 Slot 7

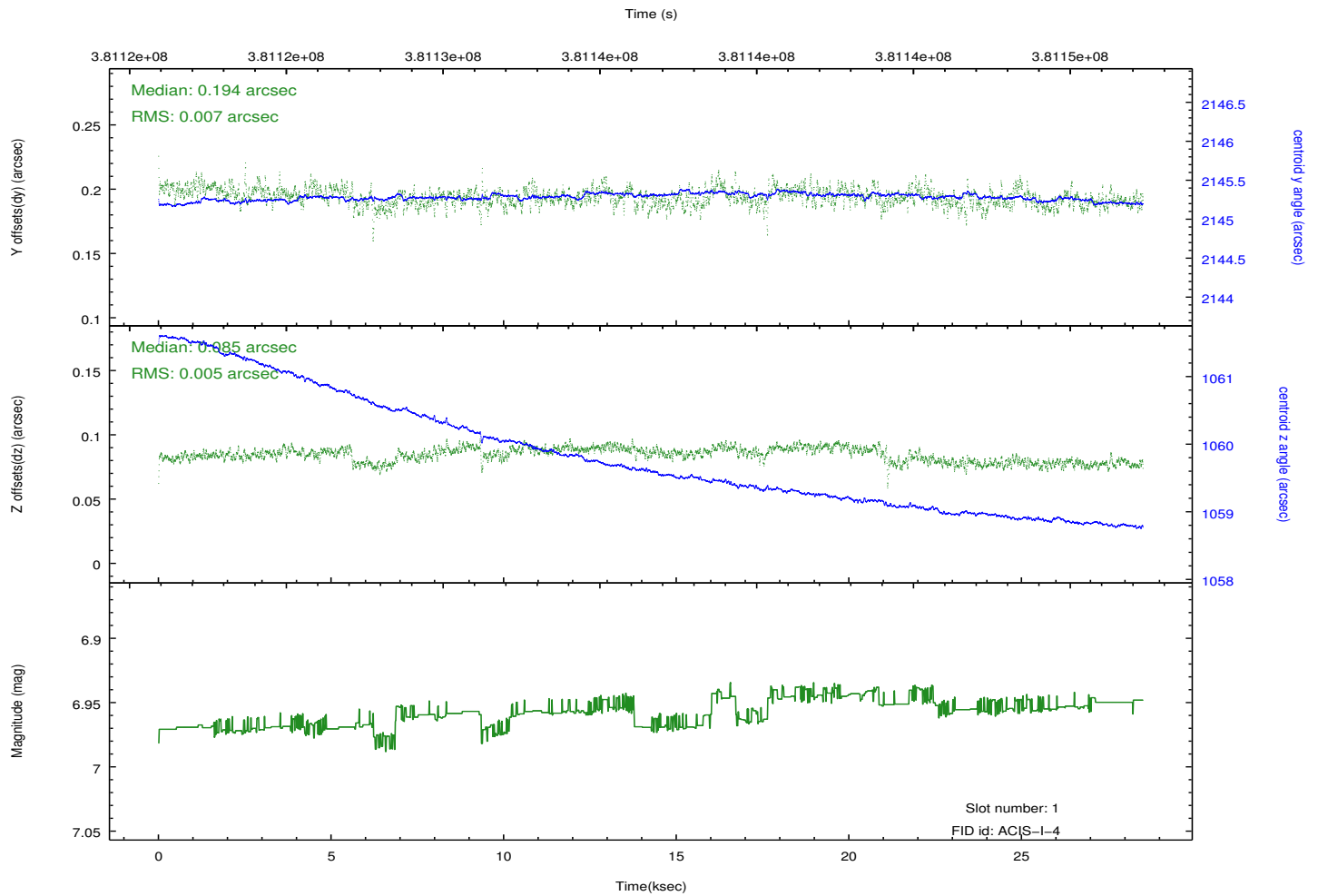
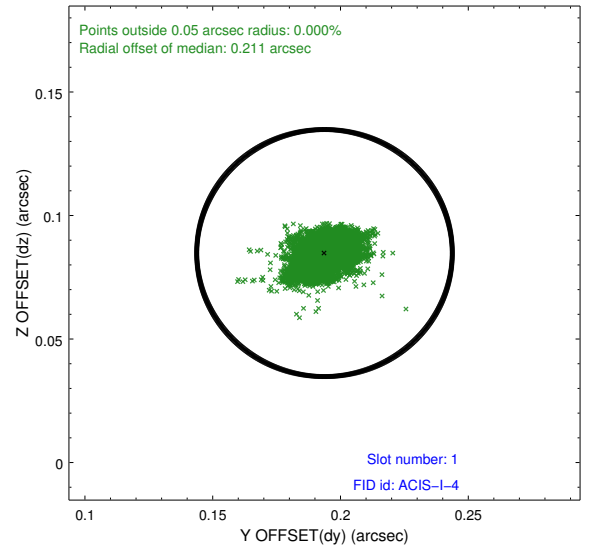
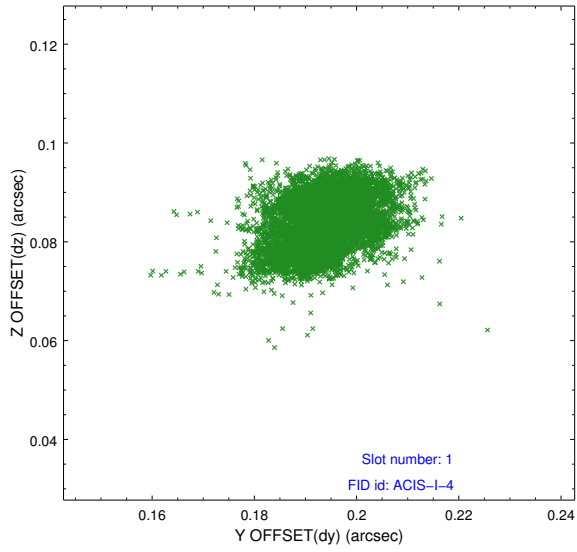


2.5 FID Slots

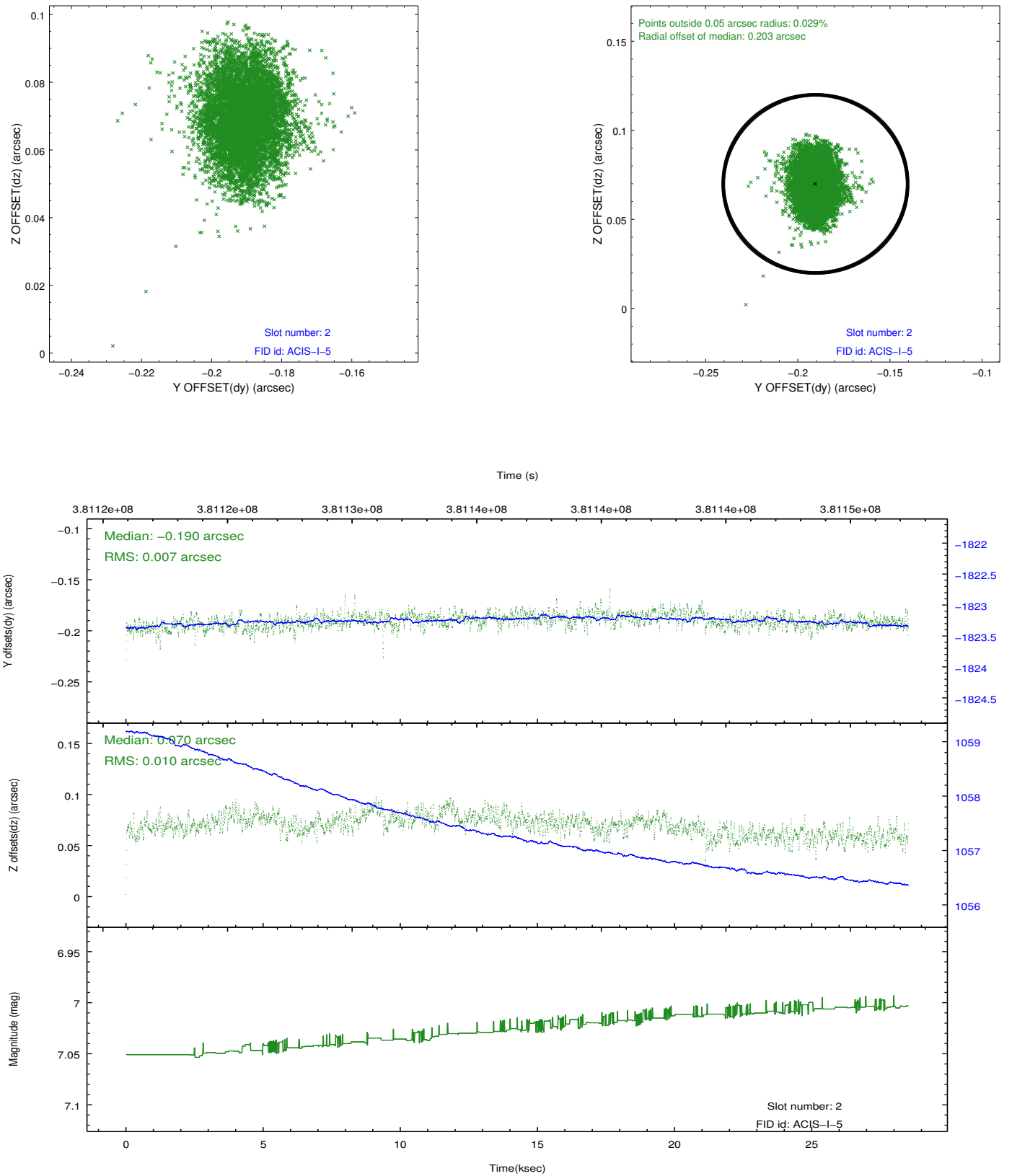
2.5.1 Slot 0



2.5.2 Slot 1



2.5.3 Slot 2



A Summary

A.1 Status

V&V Scientist	Jen Lauer
V&V Date (YYYY-MM-DD)	2012.06.26
V&V Edition	1
V&V Disposition and Status	OK
V&V Charge Time	27.343436050355

A.2 Comments

Roll preference met.