

V&V Reference Report

L2 ASCDS Version : 8.4.5

Observation 10962 - L2 Version 2
Chandra X-Ray Center

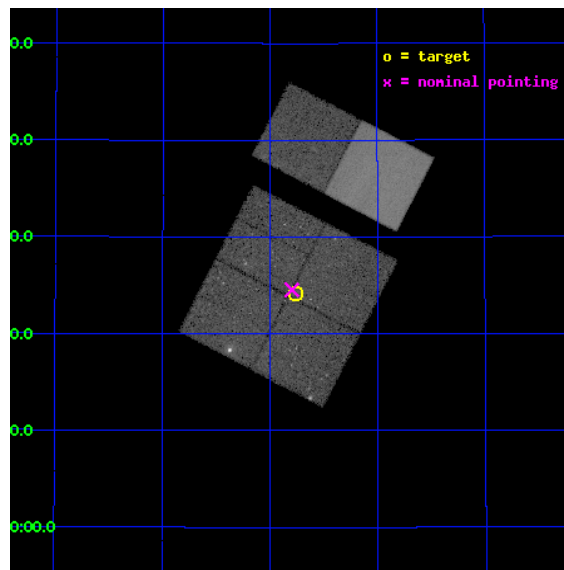
L2 Processing Date : Jun 21 2012

Contents

1	Front	2
2	OBI	3
2.1	OBI	3
2.1.1	Images	3
2.1.2	Bias	3
2.1.3	Parameters	4
2.1.4	Events	4
2.2	Compared Parameters	5
2.3	Aspect	6
2.4	Star Slots	9
2.4.1	Slot 3	9
2.4.2	Slot 4	10
2.4.3	Slot 5	11
2.4.4	Slot 6	12
2.4.5	Slot 7	13
2.5	FID Slots	14
2.5.1	Slot 0	14
2.5.2	Slot 1	15
2.5.3	Slot 2	16
A	Summary	17
A.1	Status	17
A.2	Comments	17

1 Front

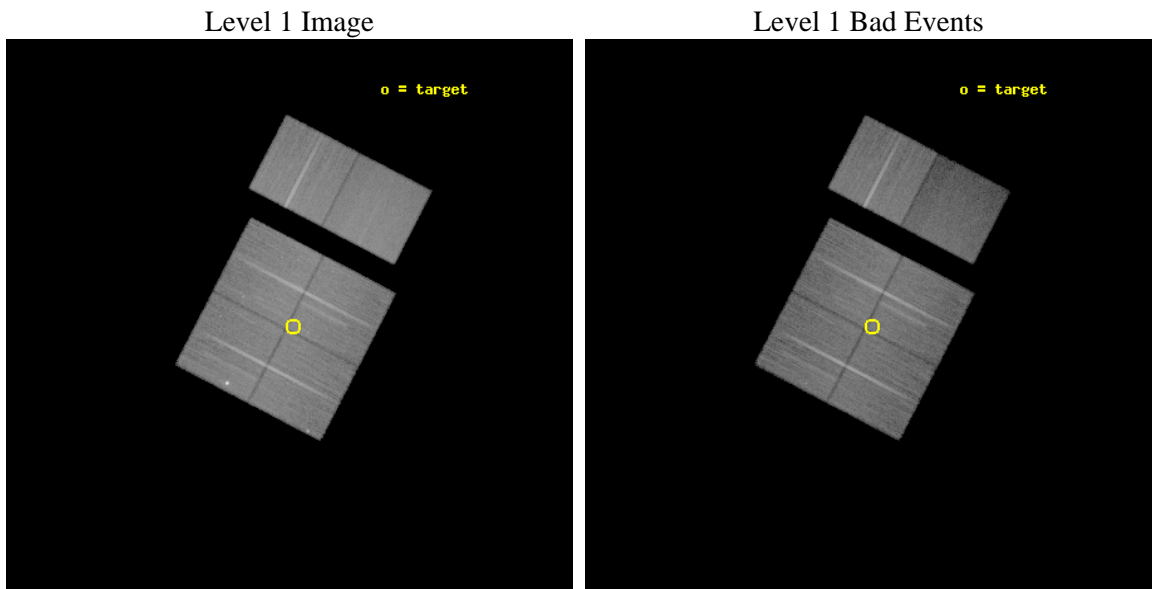
seq_num	200594	Sequence number
obs_id	10962	Observation id
title	The Chandra Cygnus OB2 Survey	Proposal title
observer	Dr. Jeremy Drake	Principal investigator
object	Cygnus OB2	Source name
dtcycle	0	
cycle	P	events from which exps? Prim/Second/Both
ra_targ	307.941441	Observer's specified target RA [deg]
dec_targ	41.403464	Observer's specified target Dec [deg]
ra_nom	307.94910744875	Nominal RA [deg]
dec_nom	41.409145904117	Nominal Dec [deg]
roll_nom	27.403611511886	Nominal Roll [deg]
revision	2	Processing version of data
ontime	29753.599889219	Sum of GTIs [s]
livetime	29376.841891955	Livetime [s]
ontime0	29753.599889219	Sum of GTIs [s]
ontime1	29753.599889219	Sum of GTIs [s]
ontime2	29747.117928743	Sum of GTIs [s]
ontime3	29753.599889219	Sum of GTIs [s]
ontime6	29747.117958546	Sum of GTIs [s]
ontime7	29753.599889219	Sum of GTIs [s]
l2events	231904	Number of level 2 events



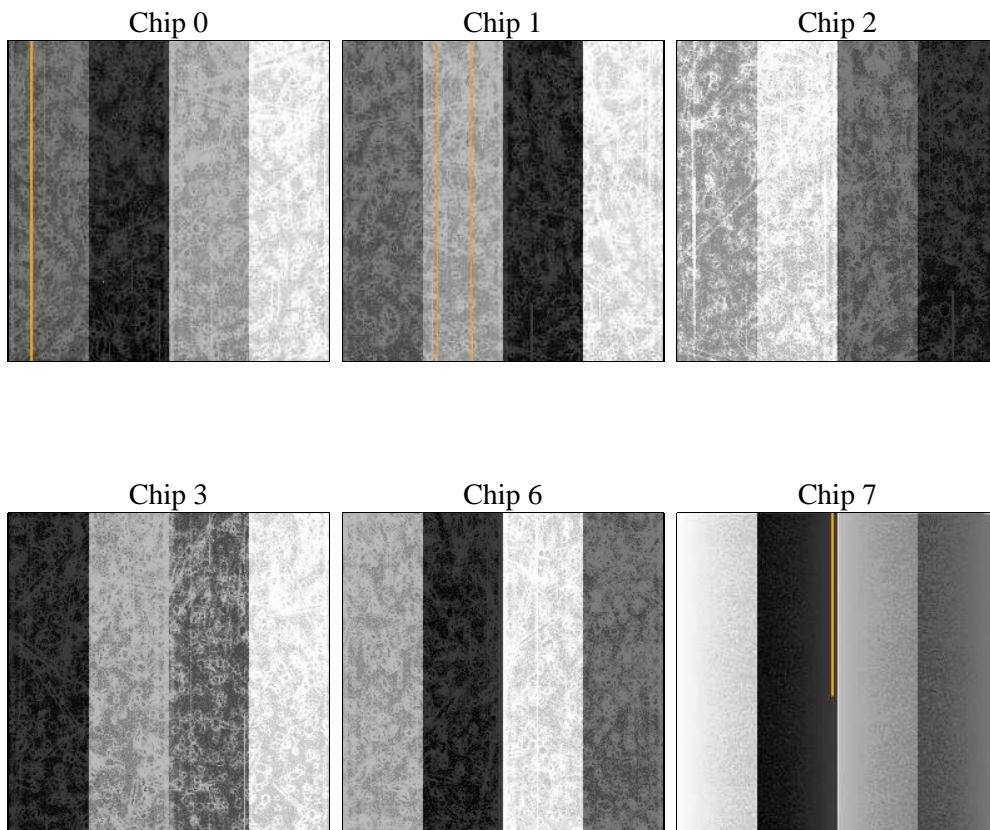
2 OBI

2.1 OBI

2.1.1 Images



2.1.2 Bias



2.1.3 Parameters

obi_num	0	Obi number	sched_exp_time	30000.000000	[s] Scheduled observation exposure time
ascdsver	8.4.5	Processing system revision	ontime	29753.599889219	Sum of GTIs [s]
caldbver	4.4.10	 	ontime0	29753.599889219	Sum of GTIs [s]
date	2012-06-21T17:14:46	Date and time of file creation	ontime1	29753.599889219	Sum of GTIs [s]
revision	2	Processing version of data	ontime2	29747.117928743	Sum of GTIs [s]
			ontime3	29753.599889219	Sum of GTIs [s]
			ontime6	29747.117958546	Sum of GTIs [s]
			ontime7	29753.599889219	Sum of GTIs [s]
			l1events	1351941	Number of level 1 events

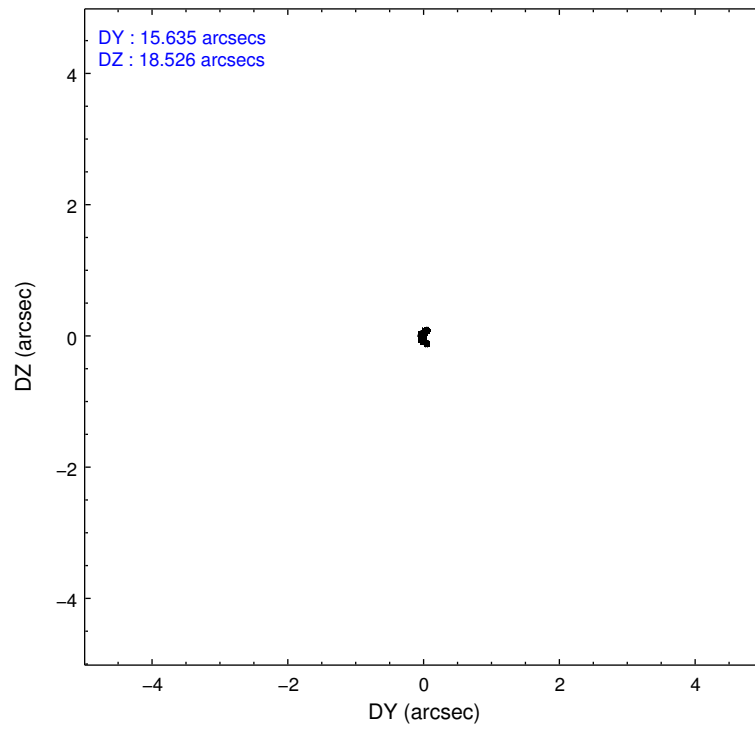
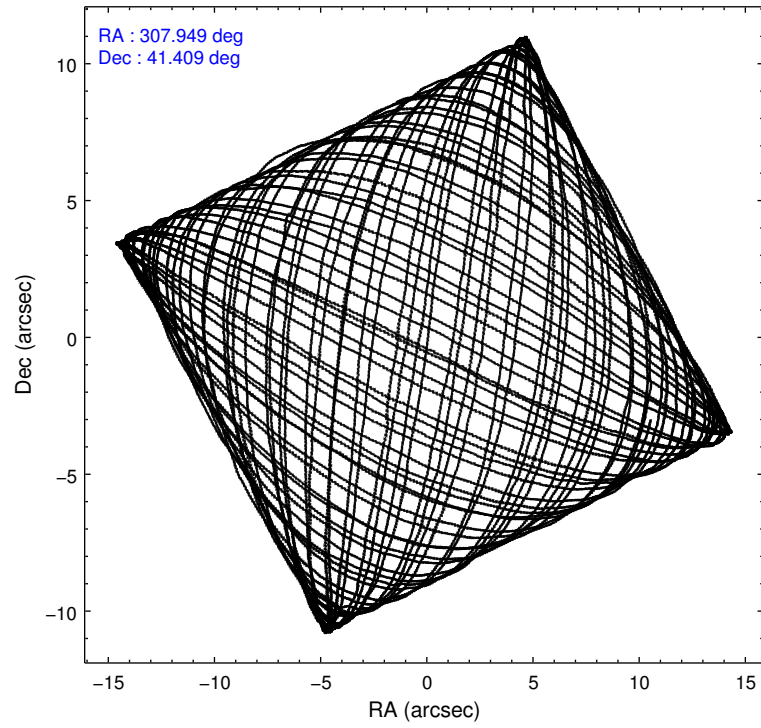
2.1.4 Events

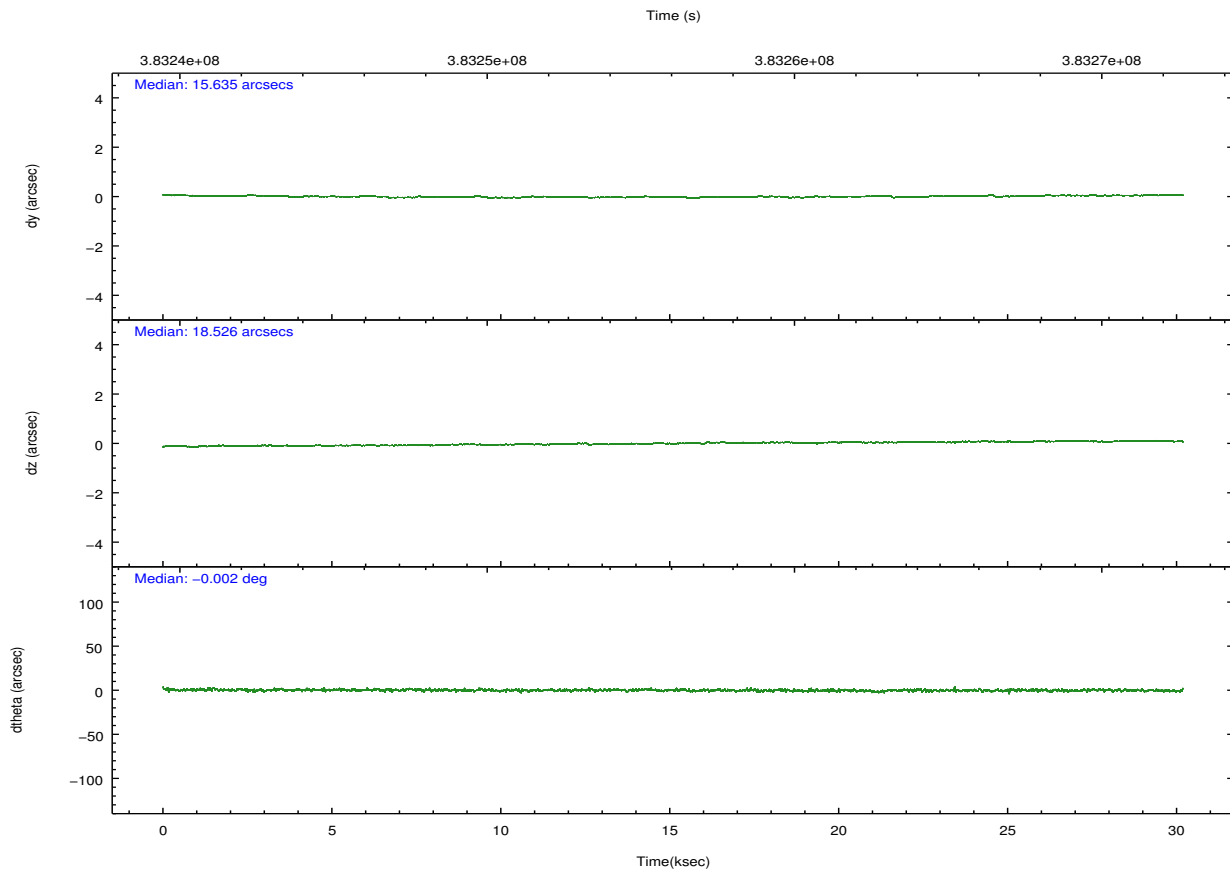
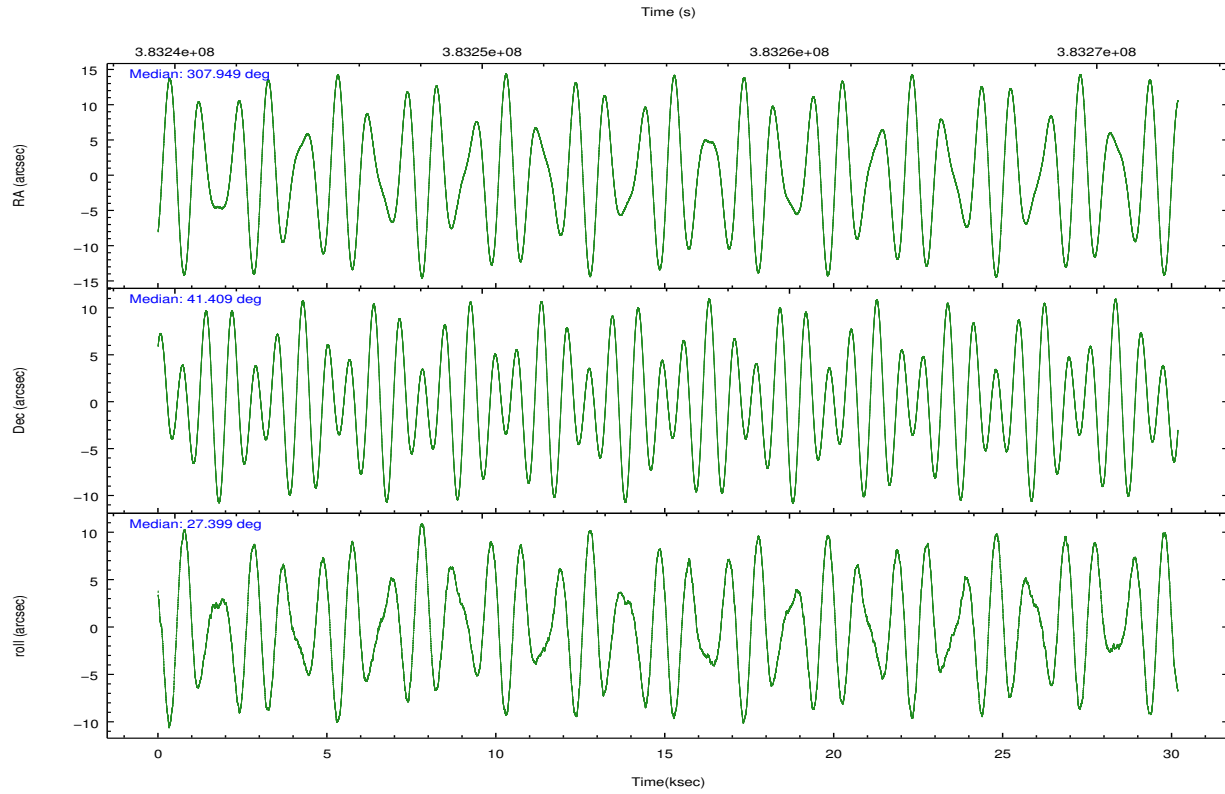
	ccd 0	ccd 1	ccd 2	ccd 3	ccd 6	ccd 7		ccd 0	ccd 1	ccd 2	ccd 3	ccd 6	ccd 7
level 1 events	221501	211134	235881	219881	235354	228190	grade 0 events	20247	11918	13141	10488	9922	11864
rejected events	183285	182345	207294	194945	209606	114849		9%	5%	5%	4%	4%	5%
rejected %	82%	86%	87%	88%	89%	50%	grade 1 events	231	139	172	153	138	353
								0%	0%	0%	0%	0%	0%
							grade 2 events	7431	6053	6124	5233	5786	24460
								3%	2%	2%	2%	2%	10%
							grade 3 events	2979	2933	2560	2475	2494	10717
								1%	1%	1%	1%	1%	4%
							grade 4 events	2827	2783	2571	2505	2510	10410
								1%	1%	1%	1%	1%	4%
							grade 5 events	7316	7802	6822	8208	8367	24494
								3%	3%	2%	3%	3%	10%
							grade 6 events	4741	5107	4203	4242	5043	55922
								2%	2%	1%	1%	2%	24%
							grade 7 events	175729	174399	200288	186577	201094	89970
								79%	82%	84%	84%	85%	39%

2.2 Compared Parameters

Parameter	Planned	Actual	Parameter	Planned	Actual
Instrument	ACIS	ACIS	Obspar format version number	7	7
Detector	ACIS-012367	ACIS-012367	Obspar file type	PREDICTED	ACTUAL
Grating	NONE	NONE	Obspar update status	NONE	UPDATED
Data mode	VFAINT	VFAINT	CCD I0 on	Y	Y
Observation mode	POINTING	POINTING	CCD I1 on	Y	Y
[deg] Pointing RA	307.929476	307.9491074487539	CCD I2 on	Y	Y
[deg] Pointing Dec	41.385922	41.409145904117	CCD I3 on	Y	Y
[deg] Pointing Roll	27.207913	27.40361151188613	CCD S0 on	N	N
[mm] SIM focus pos	-0.782348	-0.7809083437167272	CCD S1 on	N	N
[mm] SIM defocus	0	0.001439871863259334	CCD S2 on	O2	Y
[mm] SIM translation stage pos	-233.592463	-233.5874344608287	CCD S3 on	O1	Y
[mm] SIM translation stage offset	0	-0.005018542100998502	CCD S4 on	N	N
[s] Observation start time (MET)	383241149.184000	383240773.14207	CCD S5 on	N	N
Observation start date	2010-02-22T15:51:23	2010-02-22T15:46:13	Number of optional ACIS chips dropped	0	0
[s] Observation end time (MET)	383271149.184000	383271283.29361	On-chip summing requested	N	N
Observation end date	2010-02-23T00:11:23	2010-02-23T00:14:43	Subarray requested	NONE	NONE
Read mode	TIMED	TIMED	Alternating exposures requested	N	N
			[s] Primary exposure time	0.000000	3.2

2.3 Aspect





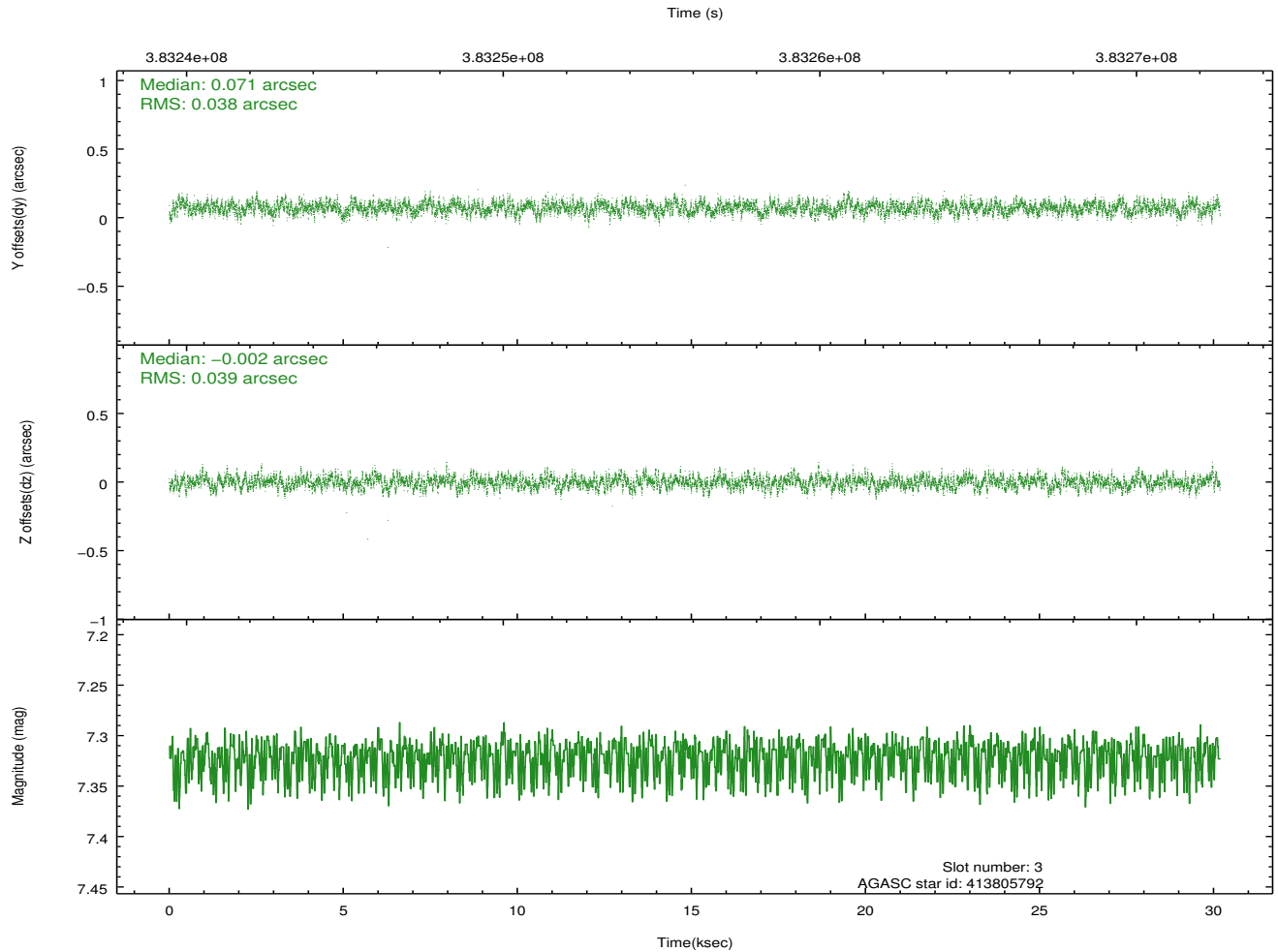
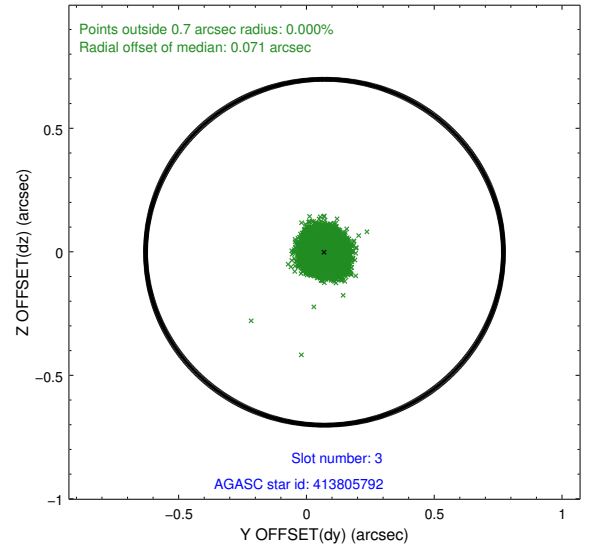
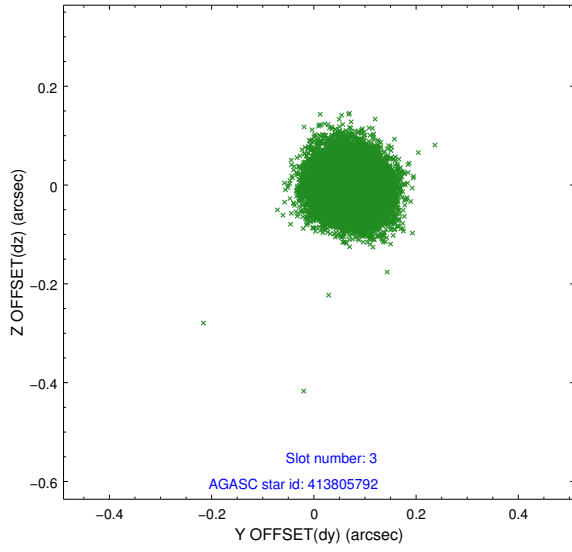
Slot Statistics

slot	status	id	mag	n_pts	med_dy	med_dz	dr1	dr2	ra	dec	mean_y	mean_z
0	FID	ACIS-I-1	7.00	7361	-0.047	0.036	0.008	0.014	0.000000	0.000000	923.75	-842.18
1	FID	ACIS-I-2	6.91	7361	-0.126	-0.056	0.006	0.011	0.000000	0.000000	-770.38	-848.74
2	FID	ACIS-I-4	6.94	7362	0.074	0.087	0.007	0.012	0.000000	0.000000	2143.73	1057.63
3	GUIDE	413805792	7.32	14723	0.071	-0.002	0.058	0.092	307.778748	40.858024	-1233.16	-1501.86
4	GUIDE	414324712	9.32	14703	-0.014	-0.018	0.114	0.189	307.938856	41.820690	737.98	1380.54
5	GUIDE	414324952	9.02	14713	-0.037	-0.093	0.092	0.145	307.998954	42.060645	1275.85	2075.64
6	GUIDE	414326136	7.38	14724	0.019	0.087	0.071	0.114	308.256176	41.473642	929.44	-119.94
7	GUIDE	413803288	6.99	14723	-0.041	0.025	0.065	0.100	307.629978	40.506899	-2175.06	-2438.37

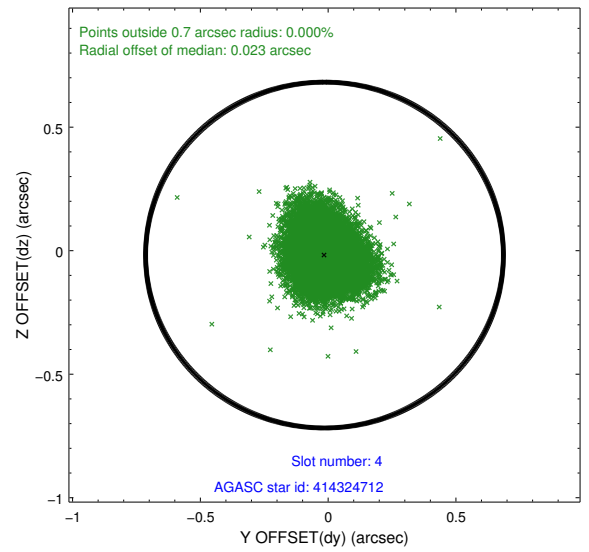
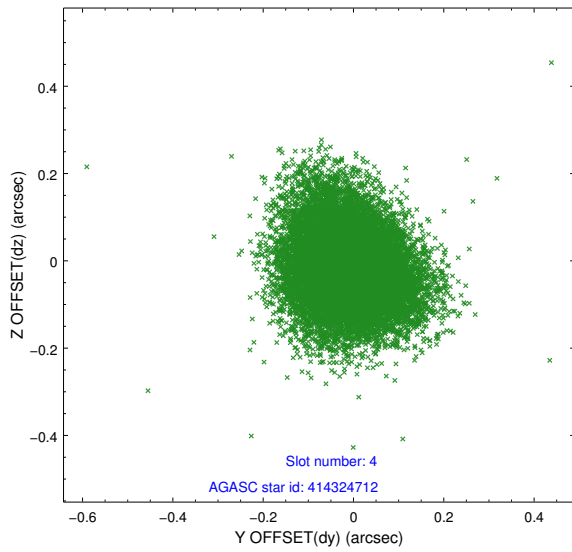
∞

2.4 Star Slots

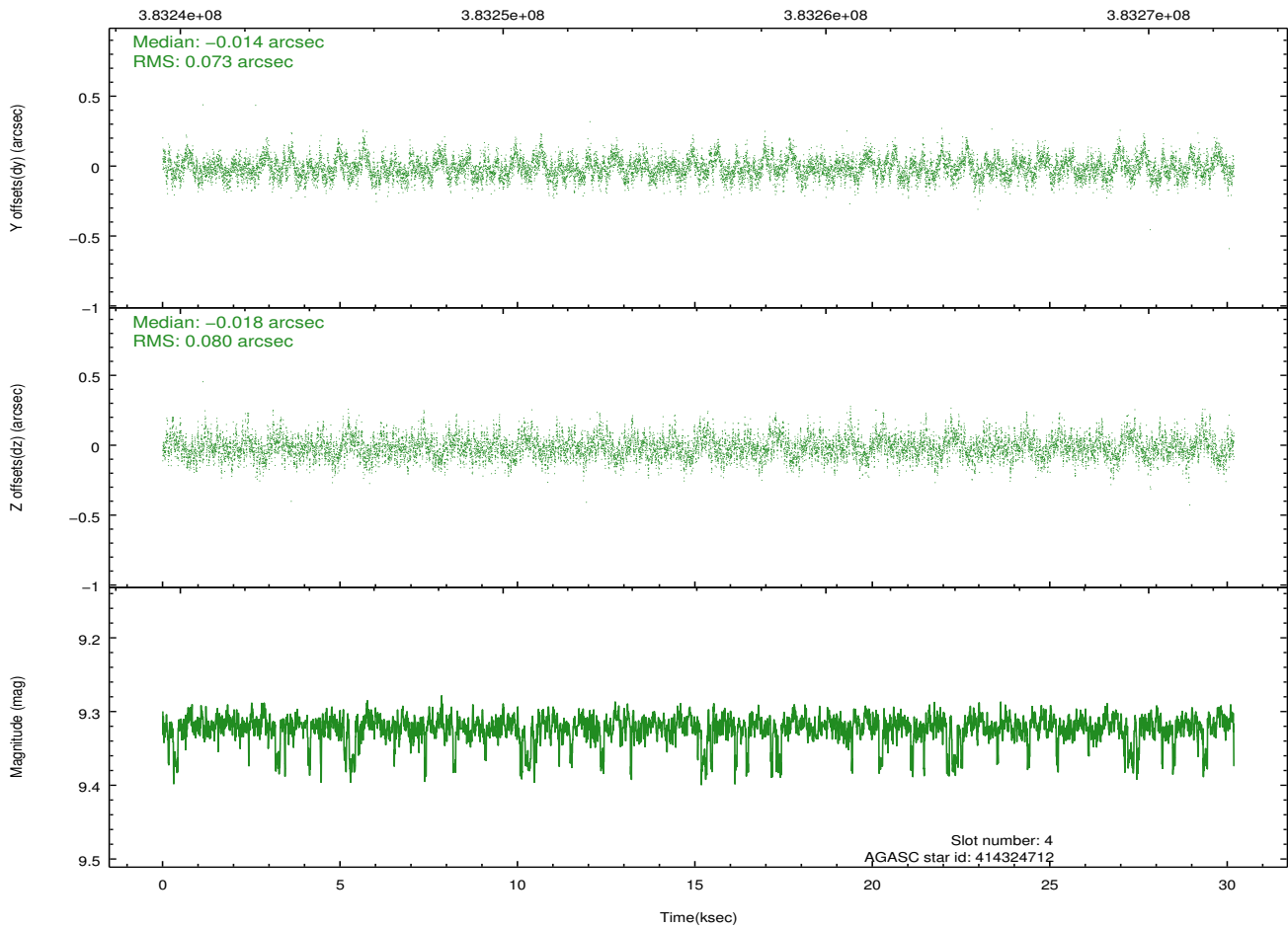
2.4.1 Slot 3



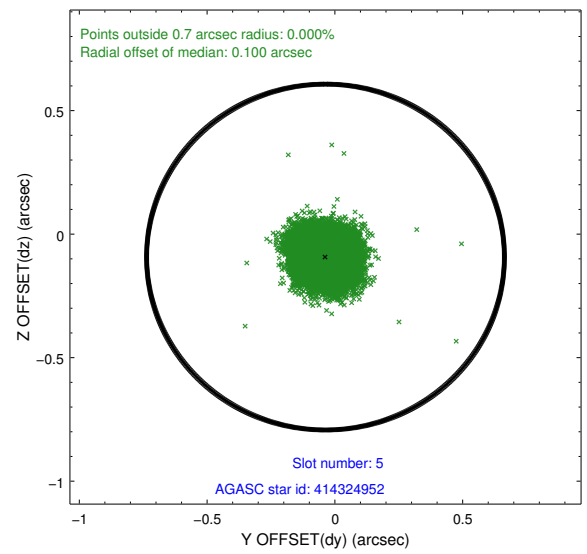
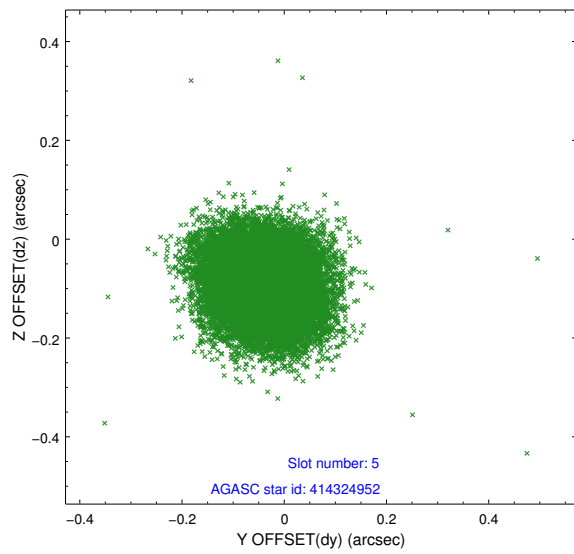
2.4.2 Slot 4



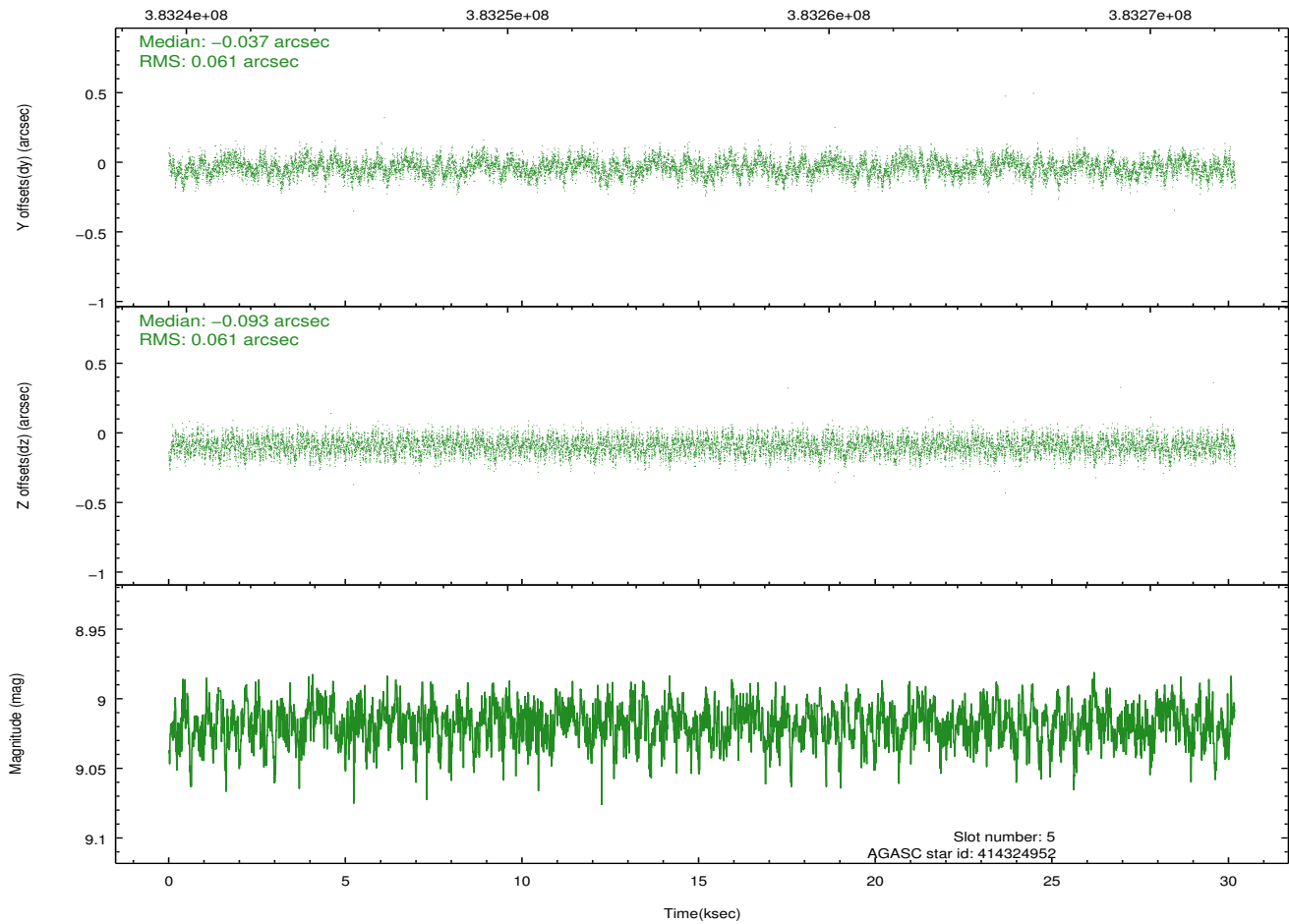
Time (s)



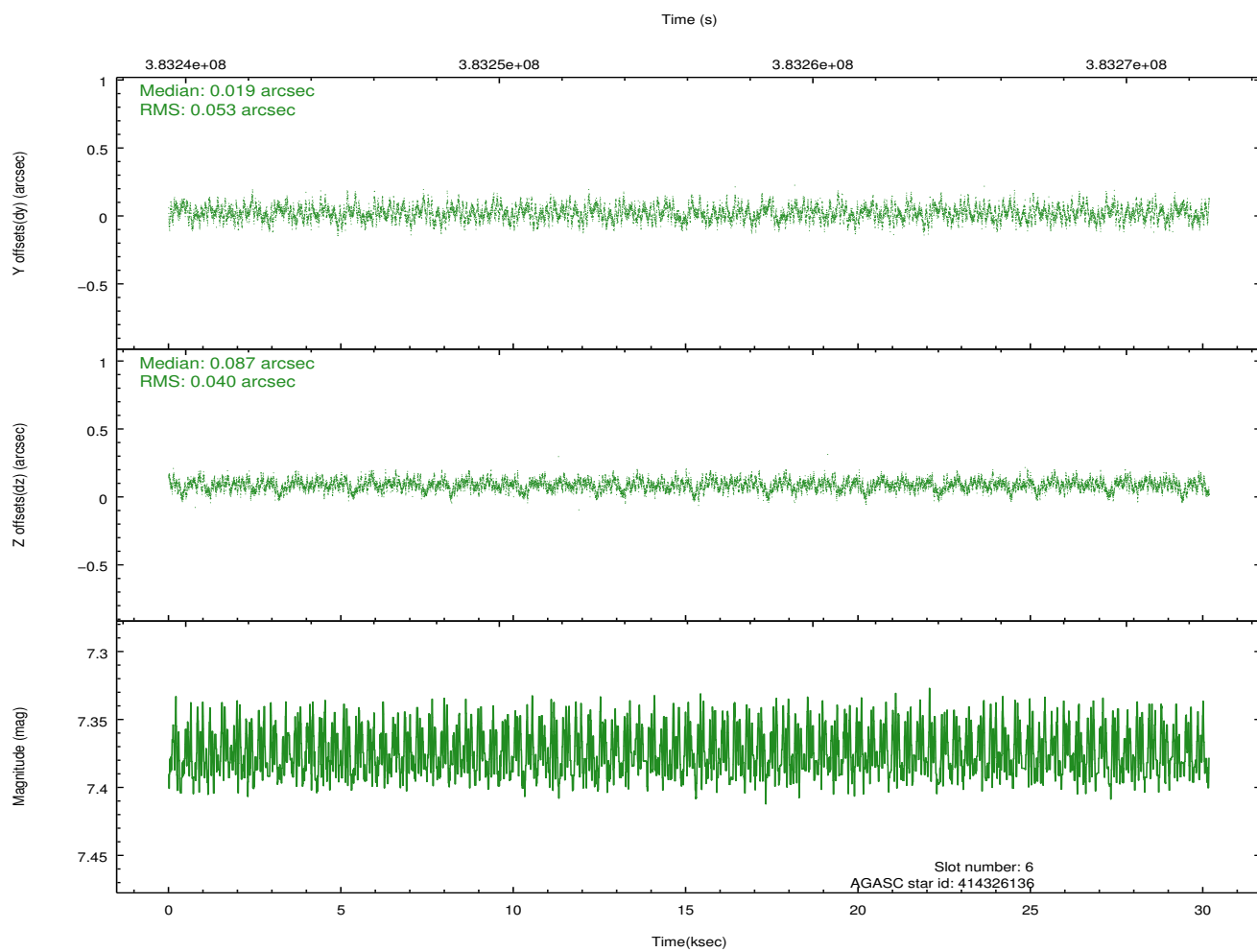
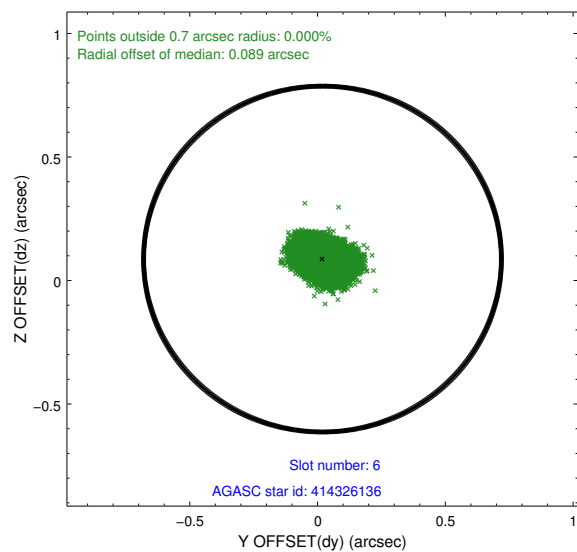
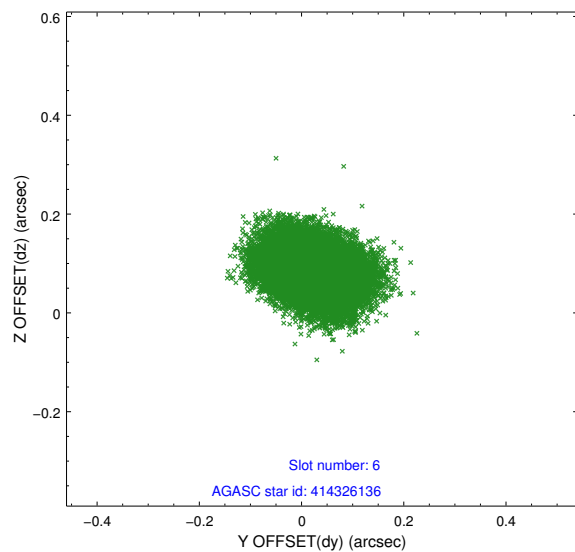
2.4.3 Slot 5



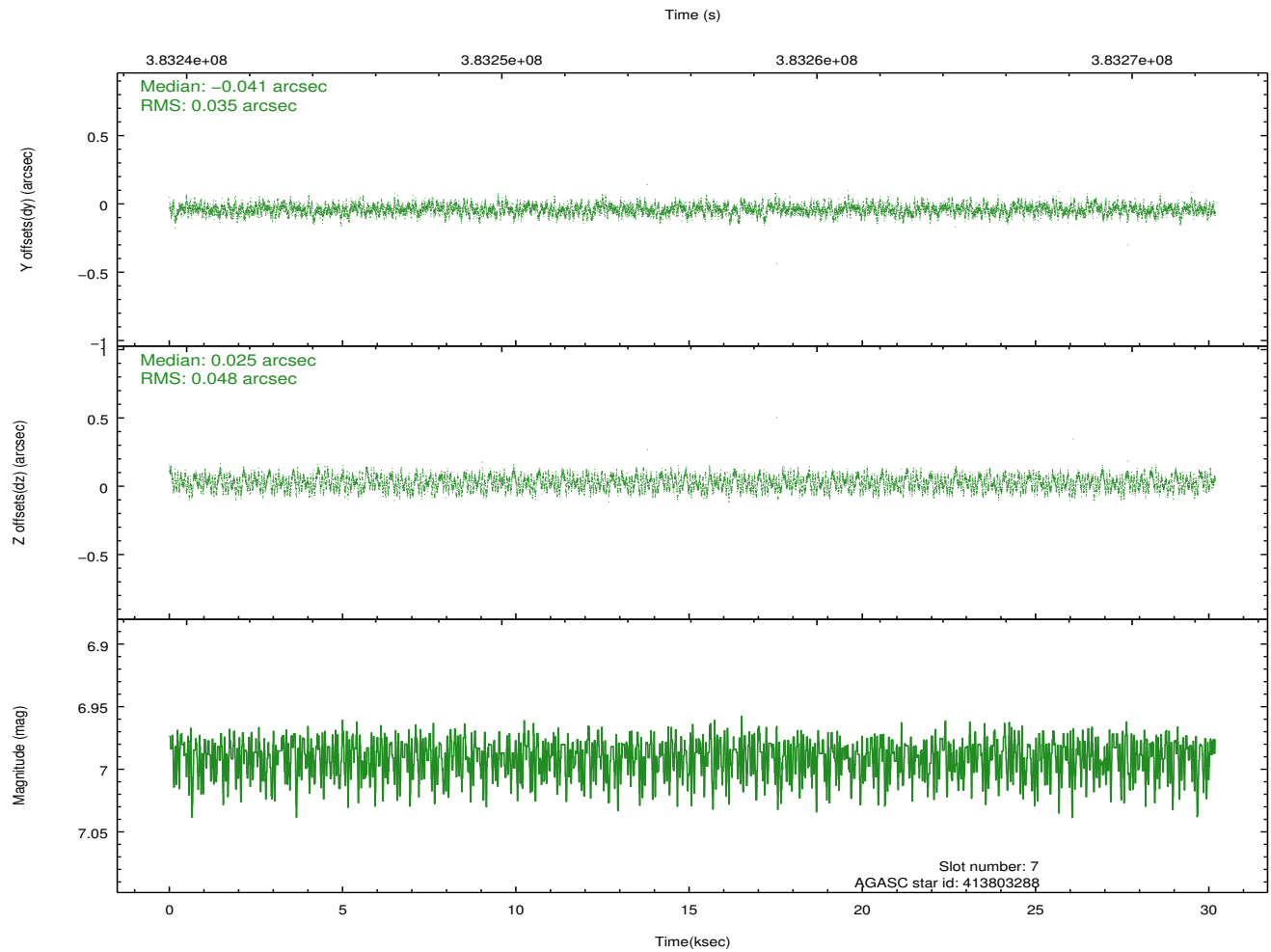
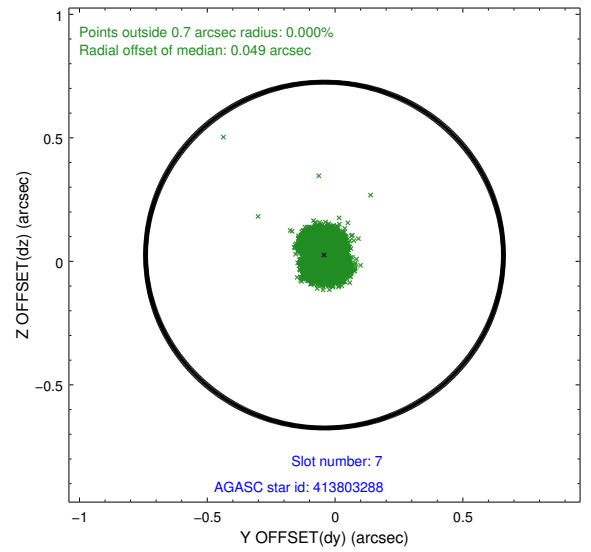
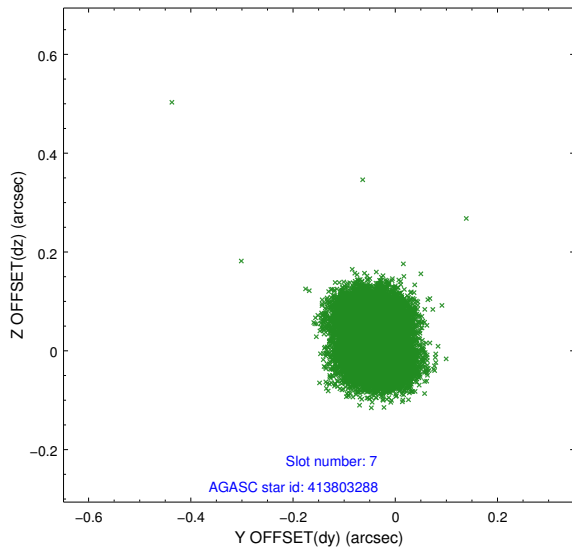
Time (s)



2.4.4 Slot 6

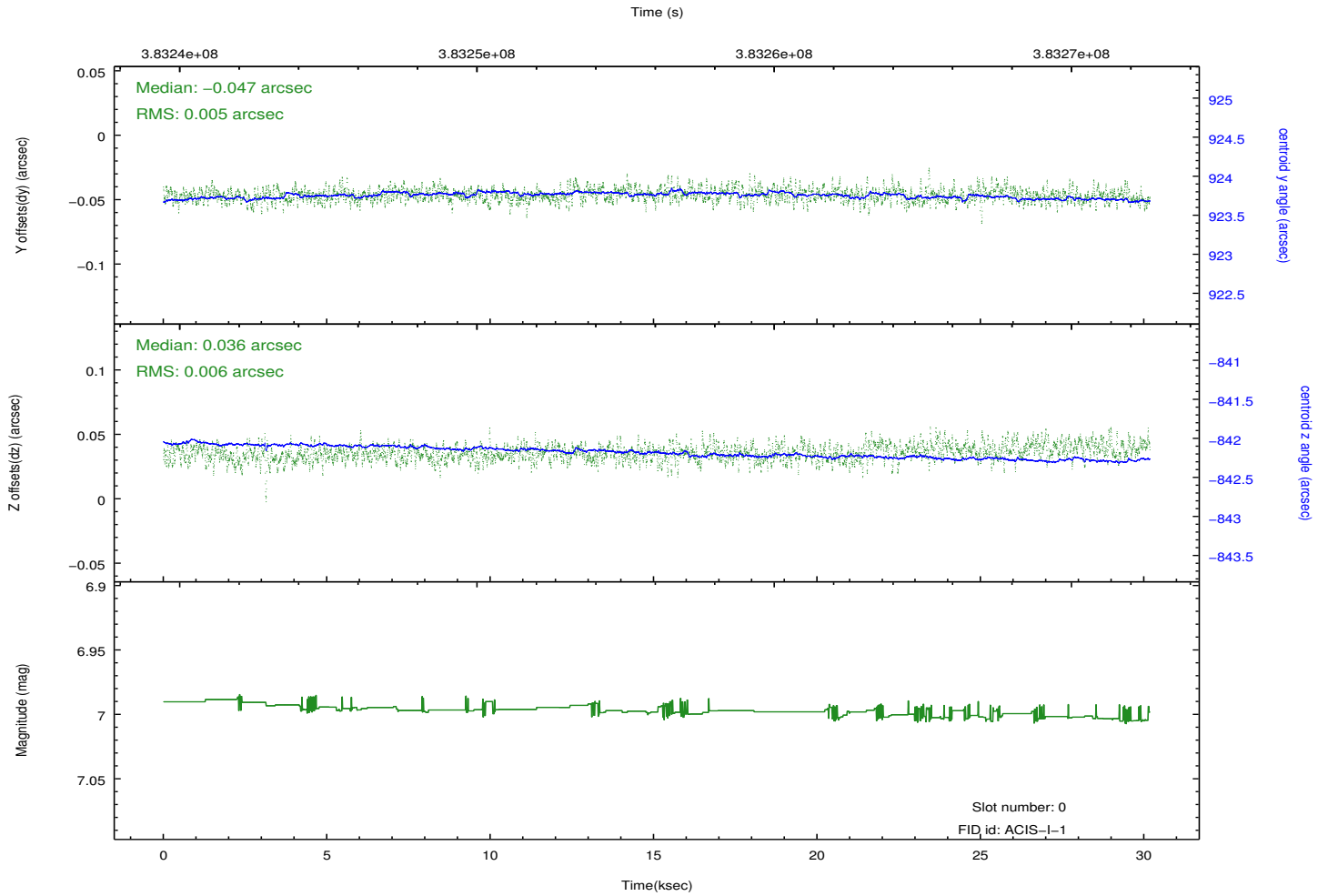
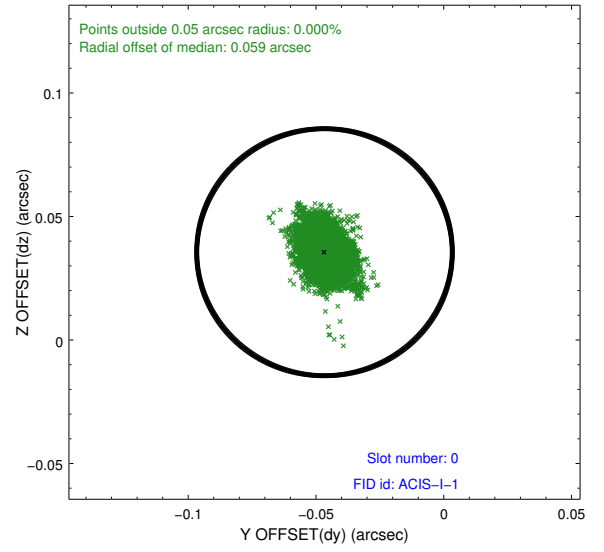
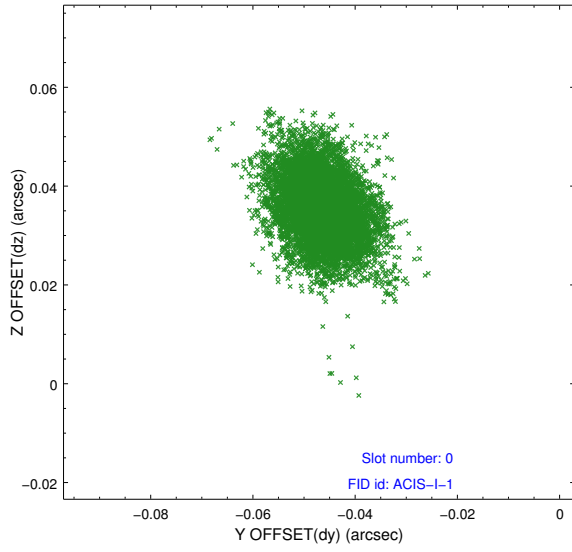


2.4.5 Slot 7

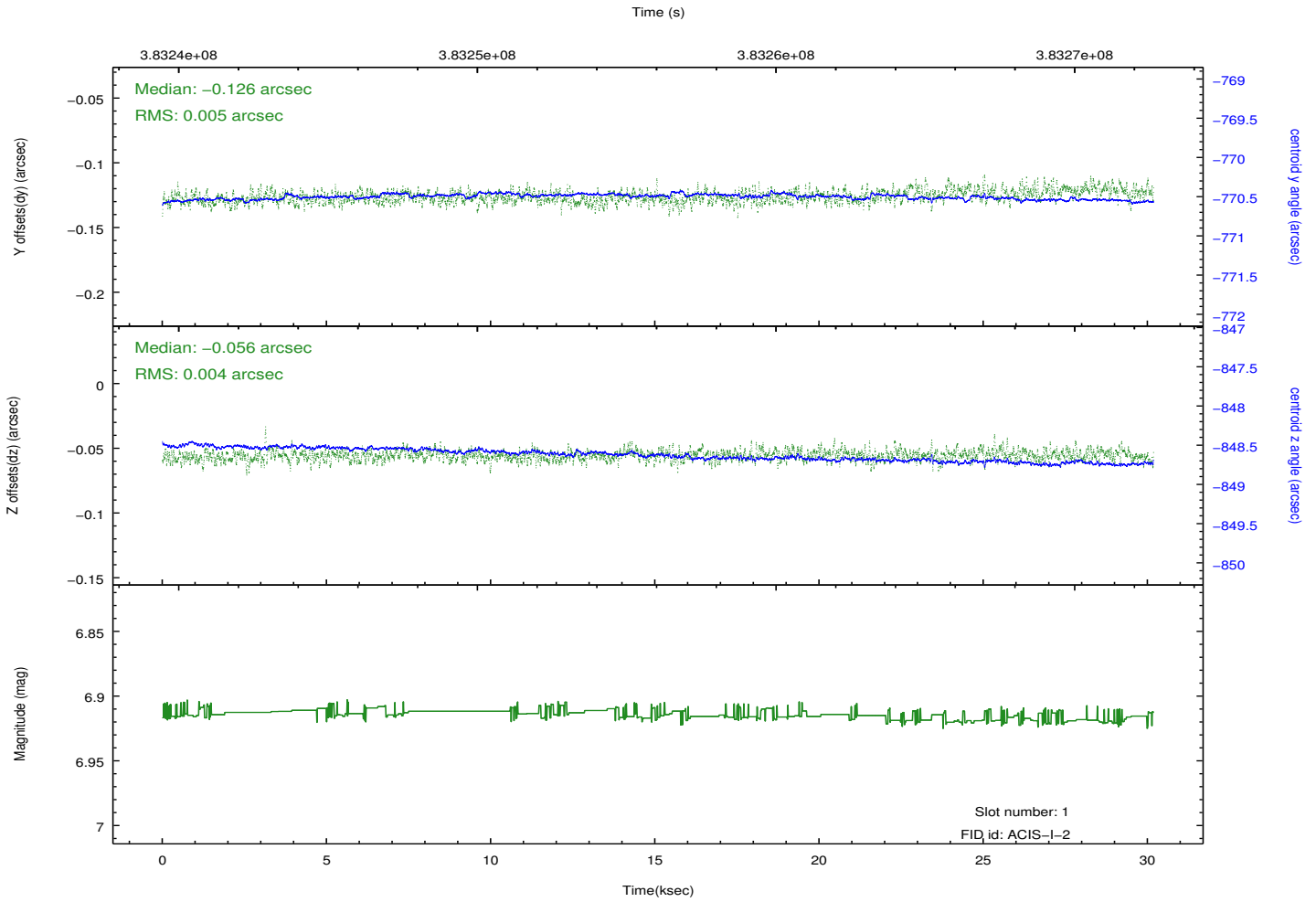
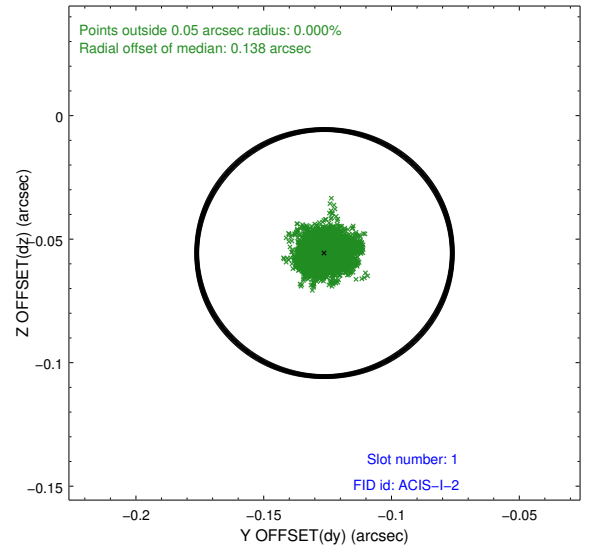
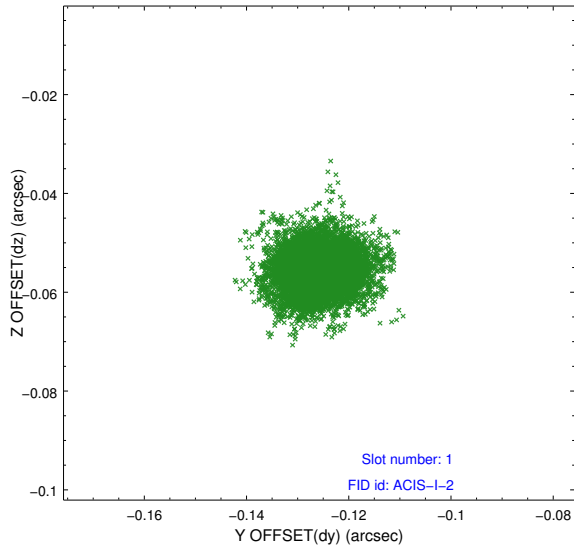


2.5 FID Slots

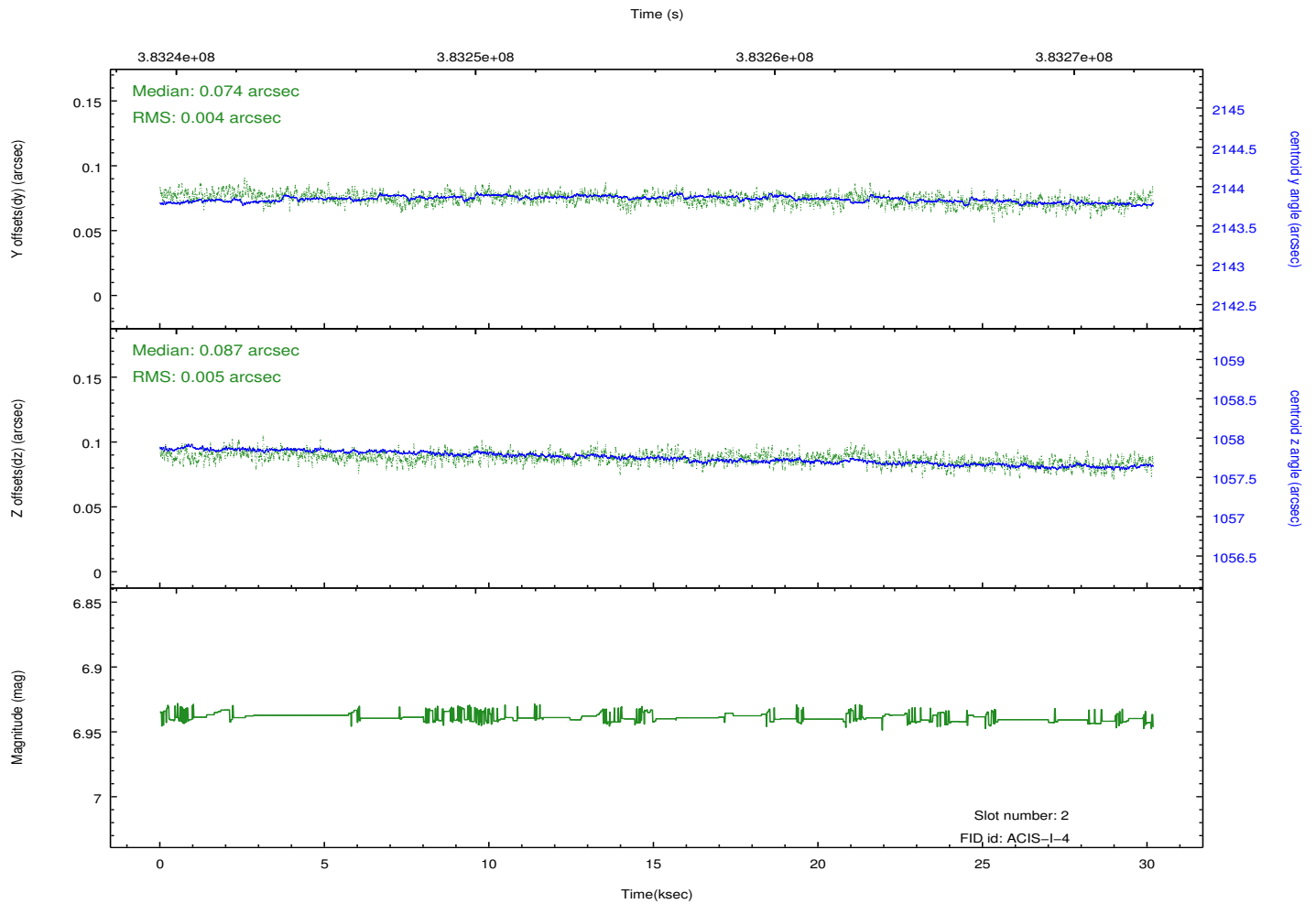
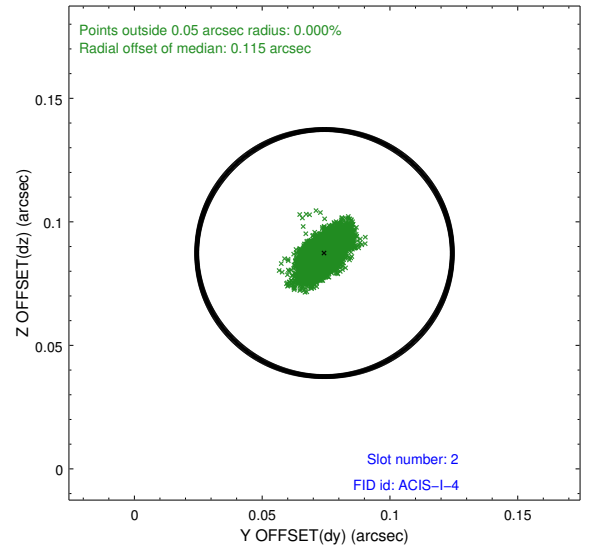
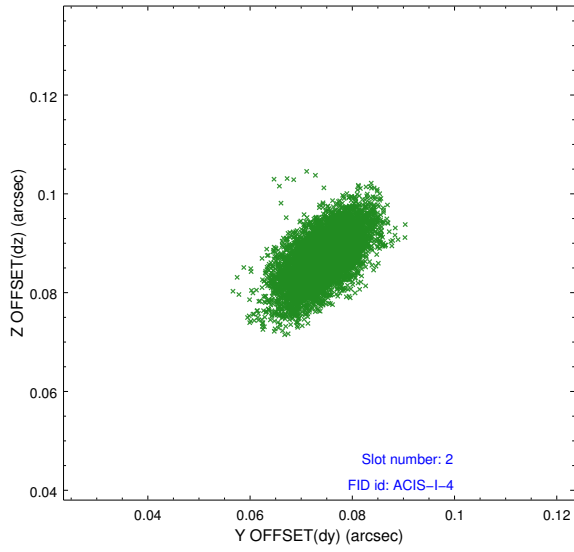
2.5.1 Slot 0



2.5.2 Slot 1



2.5.3 Slot 2



A Summary

A.1 Status

V&V Scientist	Jen Lauer
V&V Date (YYYY-MM-DD)	2012.06.27
V&V Edition	1
V&V Disposition and Status	OK
V&V Charge Time	29.753599889219

A.2 Comments

Roll preference met.