

V&V Reference Report

L2 ASCDS Version : 8.4.5

Observation 11562 - L2 Version 2
Chandra X-Ray Center

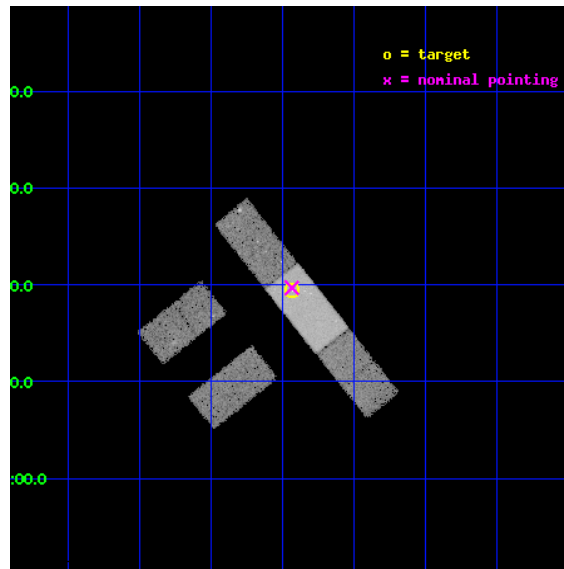
L2 Processing Date : Jun 19 2012

Contents

1	Front	2
2	OBI	3
2.1	OBI	3
2.1.1	Images	3
2.1.2	Bias	3
2.1.3	Parameters	4
2.1.4	Events	4
2.2	Compared Parameters	5
2.3	Aspect	6
2.4	Star Slots	9
2.4.1	Slot 3	9
2.4.2	Slot 4	10
2.4.3	Slot 5	11
2.4.4	Slot 6	12
2.4.5	Slot 7	13
2.5	FID Slots	14
2.5.1	Slot 0	14
2.5.2	Slot 1	15
2.5.3	Slot 2	16
A	Summary	17
A.1	Status	17
A.2	Comments	17

1 Front

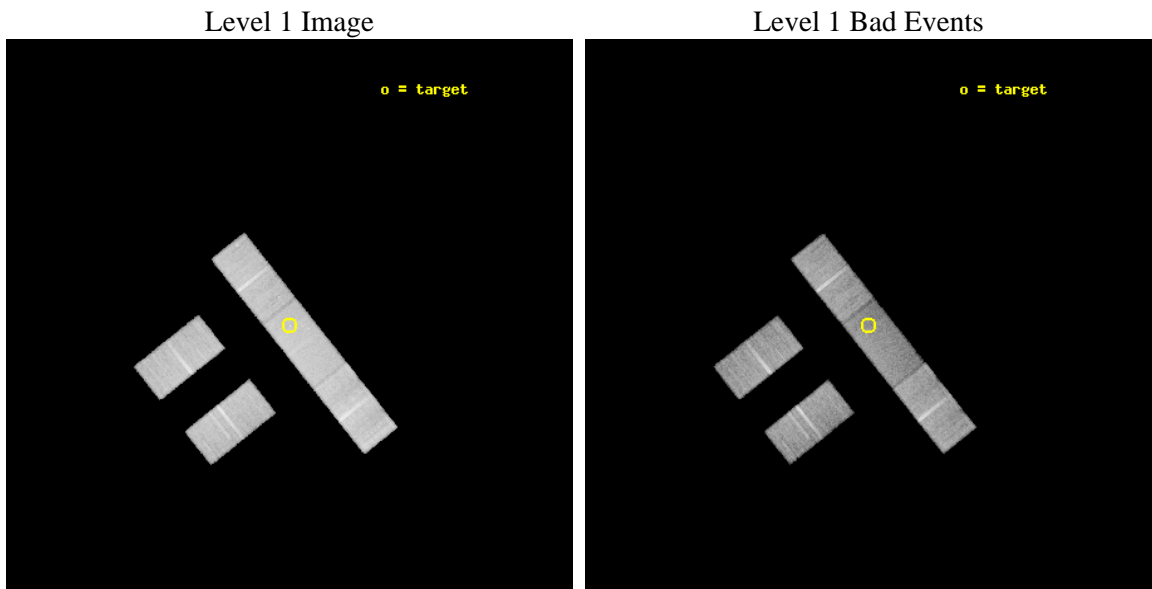
seq_num	702148	Sequence number
obs_id	11562	Observation id
title	The Size of Quasar Non-Thermal/X-ray Emission Regions	Proposal tit
observer	Prof. Christopher Kochanek	Principal investigator
object	SDSS0924+0219	Source name
dtcycle	0	
cycle	P	events from which exps? Prim/Second/Both
ra_targ	141.232917	Observer's specified target RA [deg]
dec_targ	2.323583	Observer's specified target Dec [deg]
ra_nom	141.23348302649	Nominal RA [deg]
dec_nom	2.3283836933911	Nominal Dec [deg]
roll_nom	51.491068064825	Nominal Roll [deg]
revision	2	Processing version of data
ontime	22062.329167068	Sum of GTIs [s]
livetime	21542.273344677	Livetime [s]
ontime2	22062.165007055	Sum of GTIs [s]
ontime3	22062.247087061	Sum of GTIs [s]
ontime6	22062.288127065	Sum of GTIs [s]
ontime7	22062.329167068	Sum of GTIs [s]
ontime8	22062.206047058	Sum of GTIs [s]
l2events	90313	Number of level 2 events



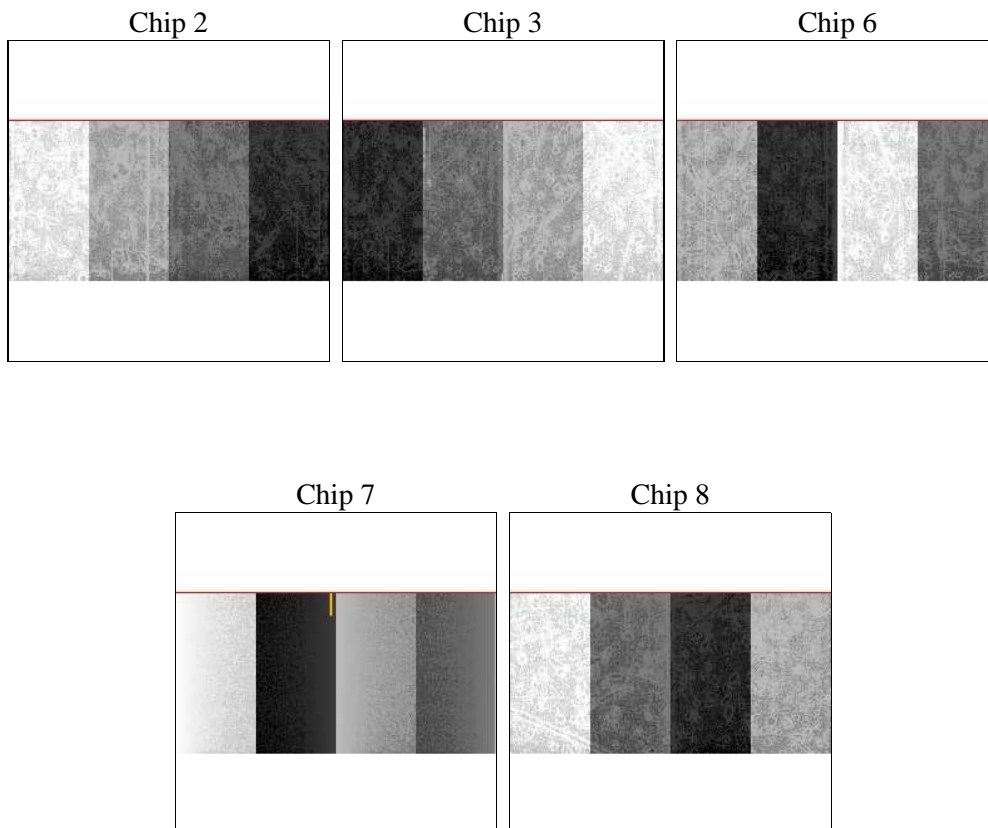
2 OBI

2.1 OBI

2.1.1 Images



2.1.2 Bias



2.1.3 Parameters

obi_num	0	Obi number	sched_exp_time	22000.000000	[s] Scheduled observation exposure time
ascdsver	8.4.5	Processing system revision	ontime	22062.329167068	Sum of GTIs [s]
caldbver	4.4.10	 	ontime2	22062.165007055	Sum of GTIs [s]
date	2012-06-19T22:20:05	Date and time of file creation	ontime3	22062.247087061	Sum of GTIs [s]
revision	2	Processing version of data	ontime6	22062.288127065	Sum of GTIs [s]
			ontime7	22062.329167068	Sum of GTIs [s]
			ontime8	22062.206047058	Sum of GTIs [s]
			l1events	557761	Number of level 1 events

2.1.4 Events

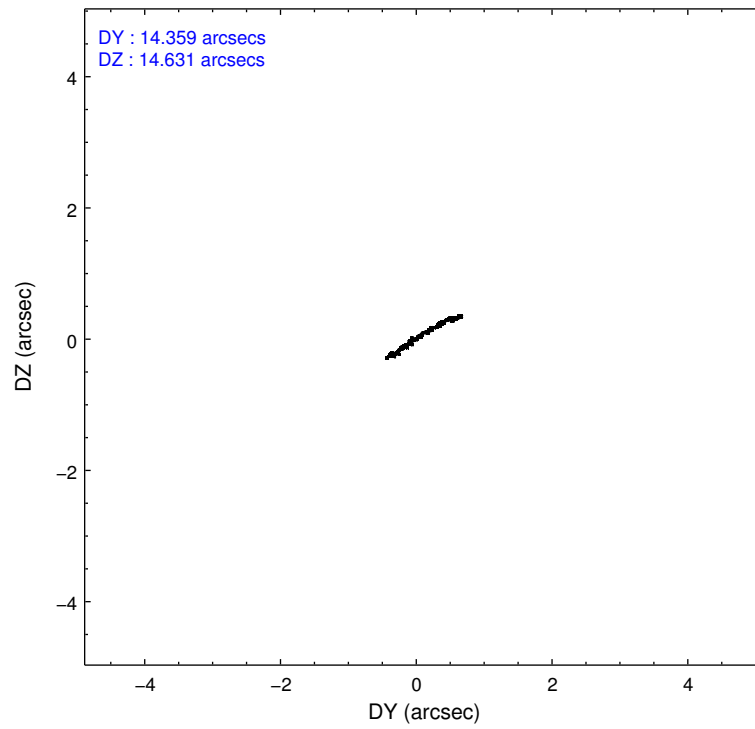
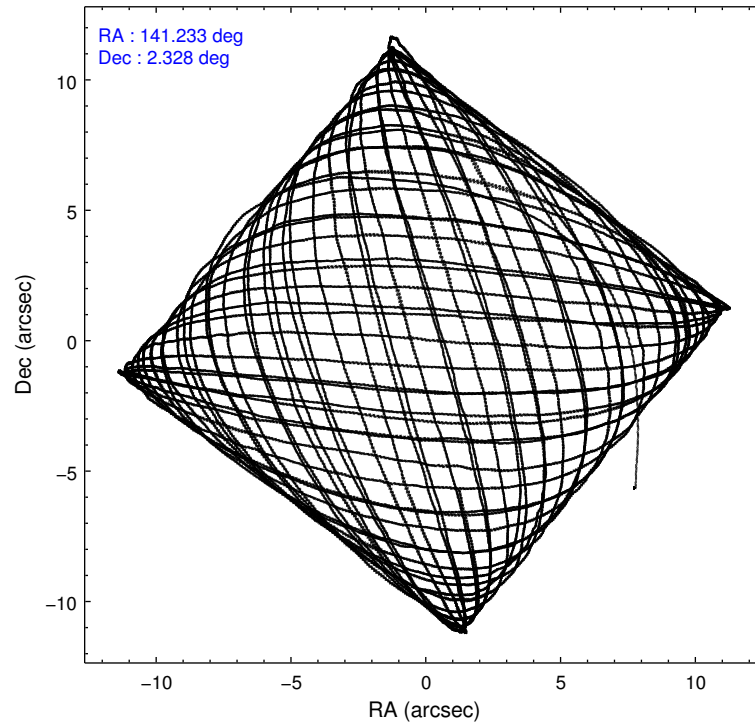
	ccd 2	ccd 3	ccd 6	ccd 7	ccd 8
level 1 events	102475	99335	105873	117402	132676
rejected events	91844	89288	94151	62902	100490
rejected %	89%	89%	88%	53%	75%

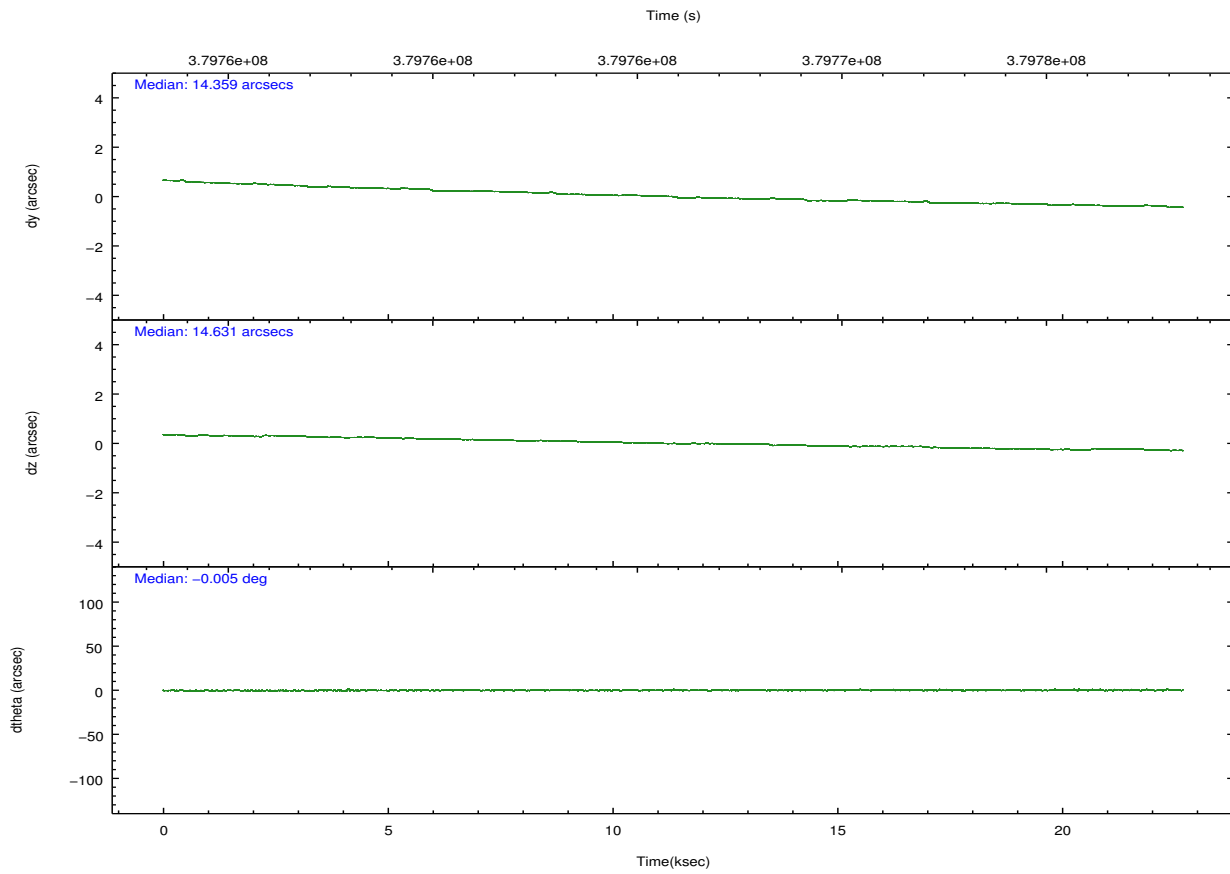
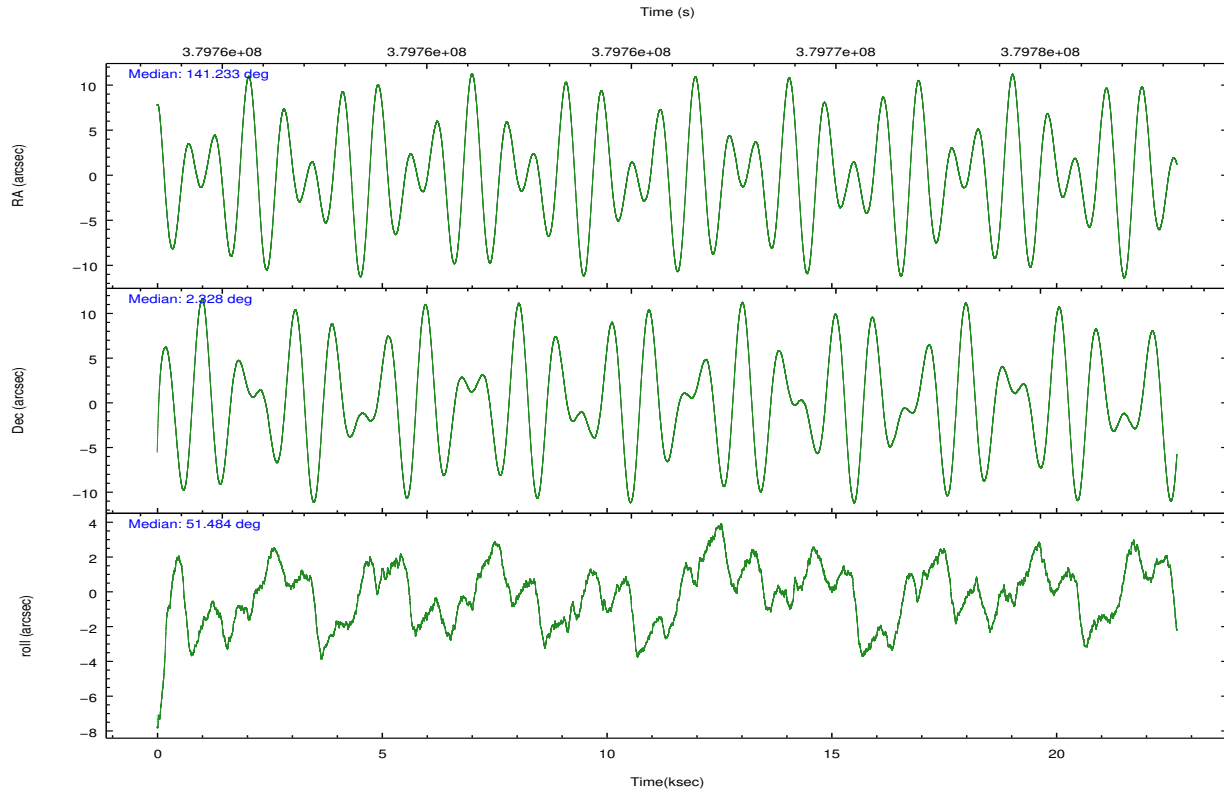
	ccd 2	ccd 3	ccd 6	ccd 7	ccd 8
grade 0 events	3689	3371	4108	5510	9049
	3%	3%	3%	4%	6%
grade 1 events	44	55	48	164	72
	0%	0%	0%	0%	0%
grade 2 events	2330	2128	2476	11525	7423
	2%	2%	2%	9%	5%
grade 3 events	1324	1316	1386	5319	3471
	1%	1%	1%	4%	2%
grade 4 events	1399	1300	1428	5258	3371
	1%	1%	1%	4%	2%
grade 5 events	3547	4130	4197	12339	5911
	3%	4%	3%	10%	4%
grade 6 events	1890	1933	2324	26892	8873
	1%	1%	2%	22%	6%
grade 7 events	88252	85102	89906	50395	94506
	86%	85%	84%	42%	71%

2.2 Compared Parameters

Parameter	Planned	Actual	Parameter	Planned	Actual
Instrument	ACIS	ACIS	Obspar format version number	7	7
Detector	ACIS-23678	ACIS-23678	Obspar file type	PREDICTED	ACTUAL
Grating	NONE	NONE	Obspar update status	NONE	UPDATED
Data mode	VFAINT	VFAINT	CCD I0 on	N	N
Observation mode	POINTING	POINTING	CCD I1 on	N	N
[deg] Pointing RA	141.229816	141.2334830264852	CCD I2 on	O4	Y
[deg] Pointing Dec	2.301303	2.32838369339107	CCD I3 on	O3	Y
[deg] Pointing Roll	51.334588	51.49106806482539	CCD S0 on	N	N
[mm] SIM focus pos	-0.684267	-0.6828225247311905	CCD S1 on	N	N
[mm] SIM defocus	0	0.001444936568705701	CCD S2 on	O1	Y
[mm] SIM translation stage pos	-190.132523	-190.1400660498719	CCD S3 on	Y	Y
[mm] SIM translation stage offset	0	0.00754346686406393	CCD S4 on	O2	Y
[s] Observation start time (MET)	379755204.184000	379753194.5779	CCD S5 on	N	N
Observation start date	2010-01-13T07:32:18	2010-01-13T06:59:54	Number of optional ACIS chips dropped	0	0
[s] Observation end time (MET)	379777204.184000	379777981.12915	On-chip summing requested	N	N
Observation end date	2010-01-13T13:38:58	2010-01-13T13:53:01	Subarray requested	CUSTOM	1/2
Read mode	TIMED	TIMED	Subarray start row	257	257
			Subarray row count	512	512
			Alternating exposures requested	N	N
			[s] Primary exposure time	0.000000	1.7

2.3 Aspect



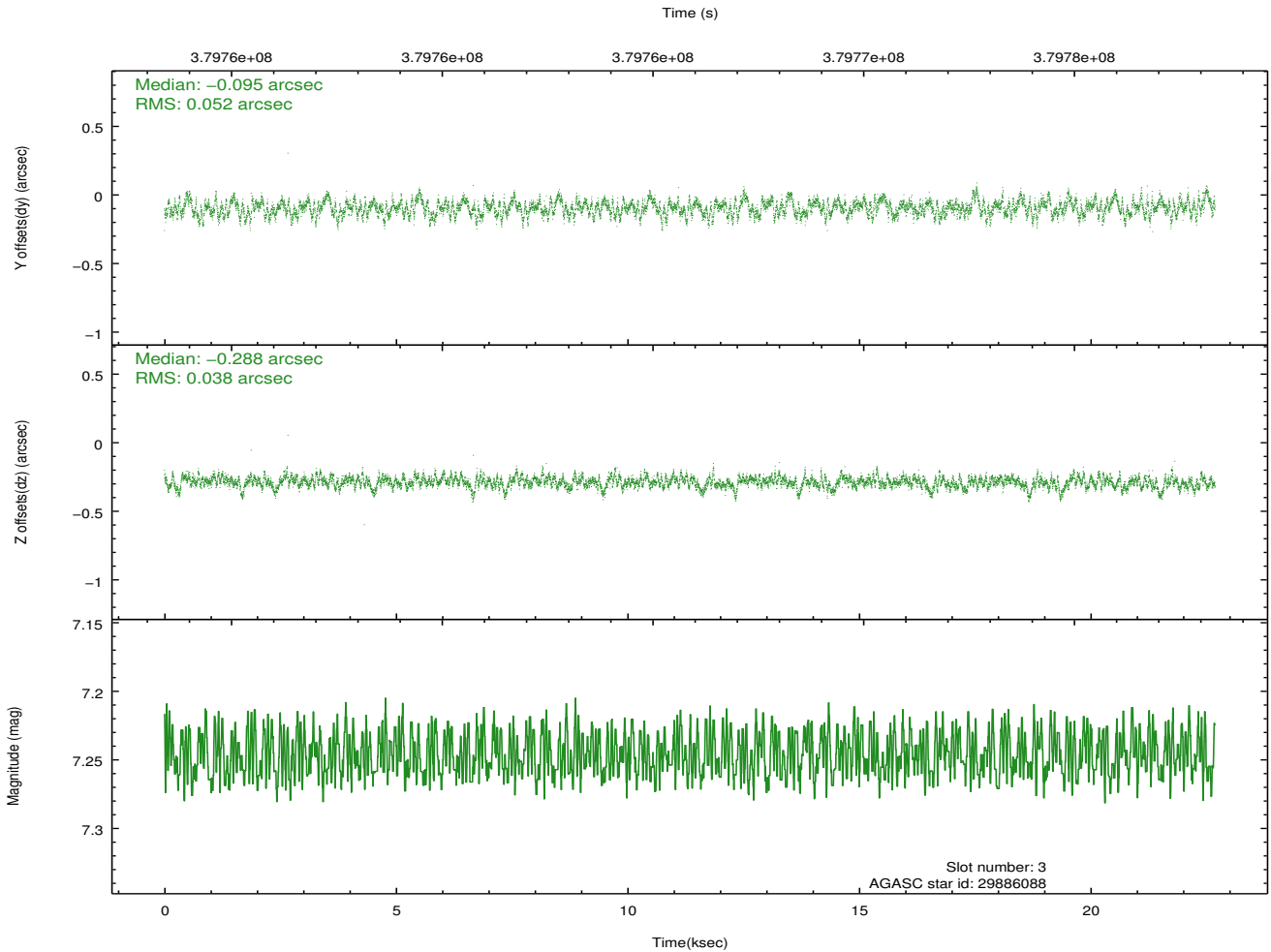
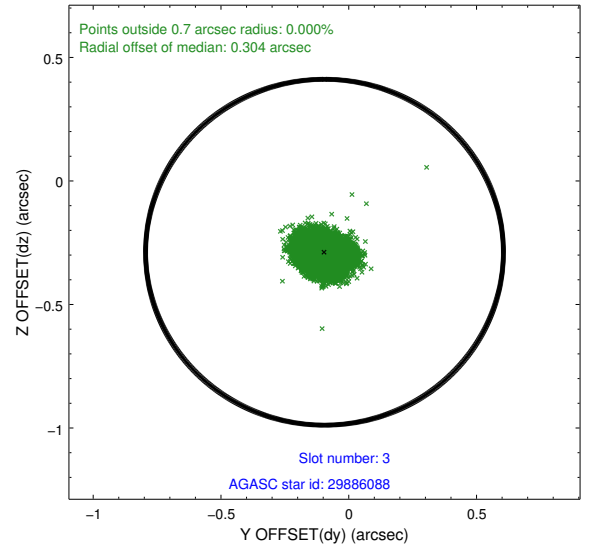
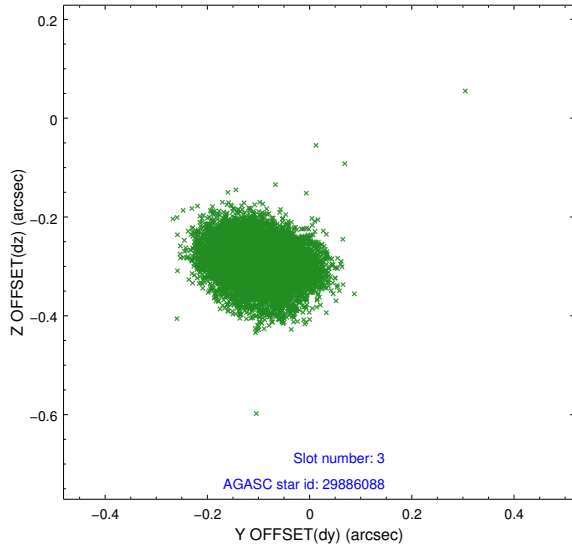


Slot Statistics

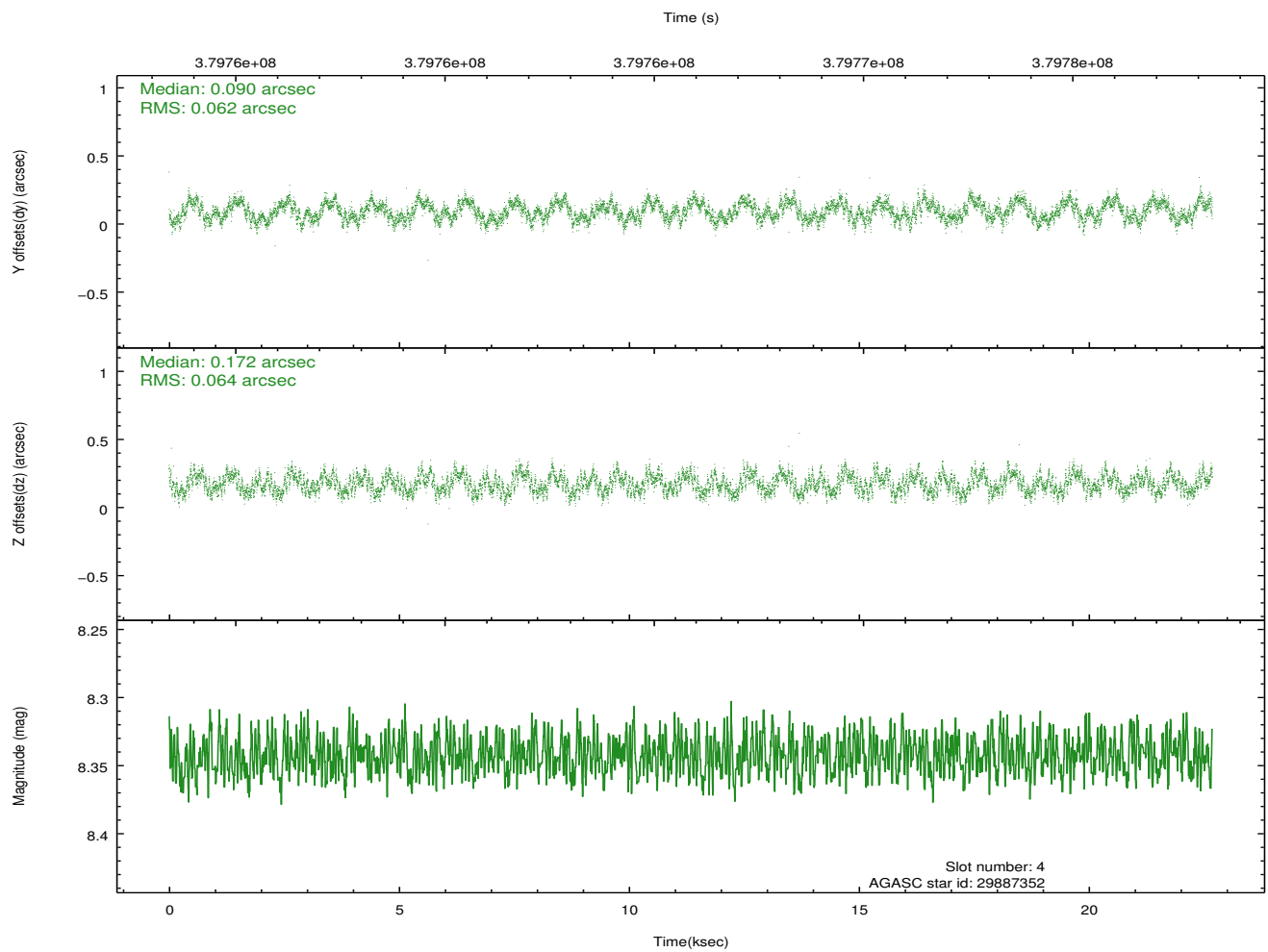
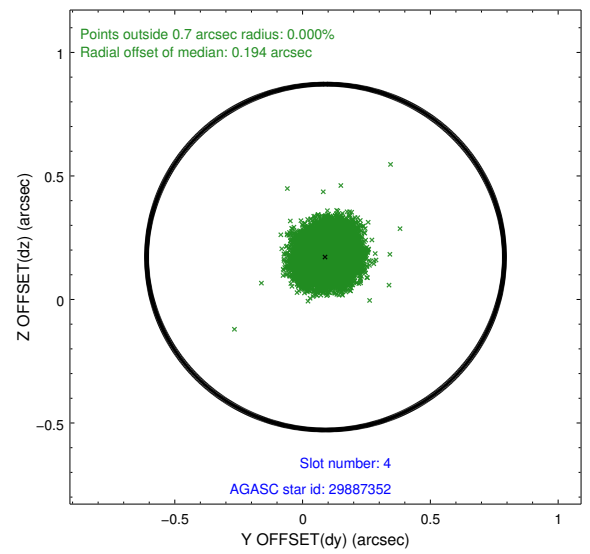
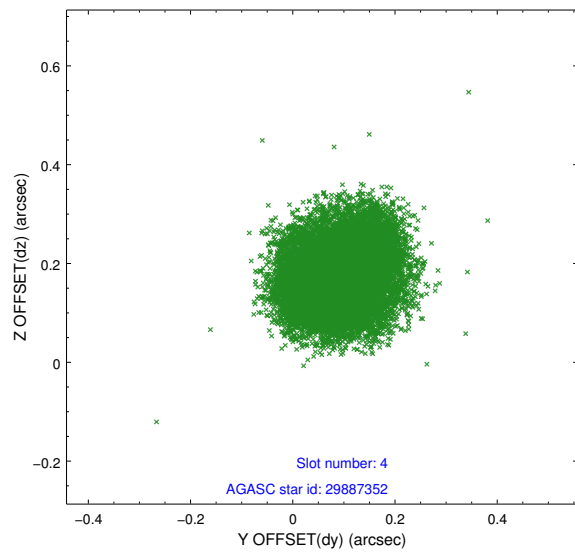
slot	status	id	mag	n_pts	med_dy	med_dz	dr1	dr2	ra	dec	mean_y	mean_z
0	FID	ACIS-S-2	6.91	5533	-0.086	-0.043	0.016	0.023	0.000000	0.000000	-767.41	-1736.07
1	FID	ACIS-S-4	6.99	5533	0.220	0.053	0.018	0.026	0.000000	0.000000	2146.08	172.39
2	FID	ACIS-S-5	7.02	5532	-0.166	-0.001	0.009	0.013	0.000000	0.000000	-1820.17	166.13
3	GUIDE	29886088	7.25	11066	-0.095	-0.288	0.068	0.113	140.911389	2.409953	-409.96	1138.44
4	GUIDE	29887352	8.34	11064	0.090	0.172	0.097	0.144	141.532384	1.680922	-1063.01	-2245.14
5	GUIDE	29892168	9.57	11055	0.117	0.268	0.126	0.215	141.475378	1.649111	-1280.53	-2156.80
6	GUIDE	30289640	9.55	11014	-0.142	-0.208	0.153	0.239	141.362441	2.801985	1705.24	753.74
7	GUIDE	30292744	8.52	11059	0.039	0.054	0.077	0.122	141.614493	2.506173	1440.58	-618.62

2.4 Star Slots

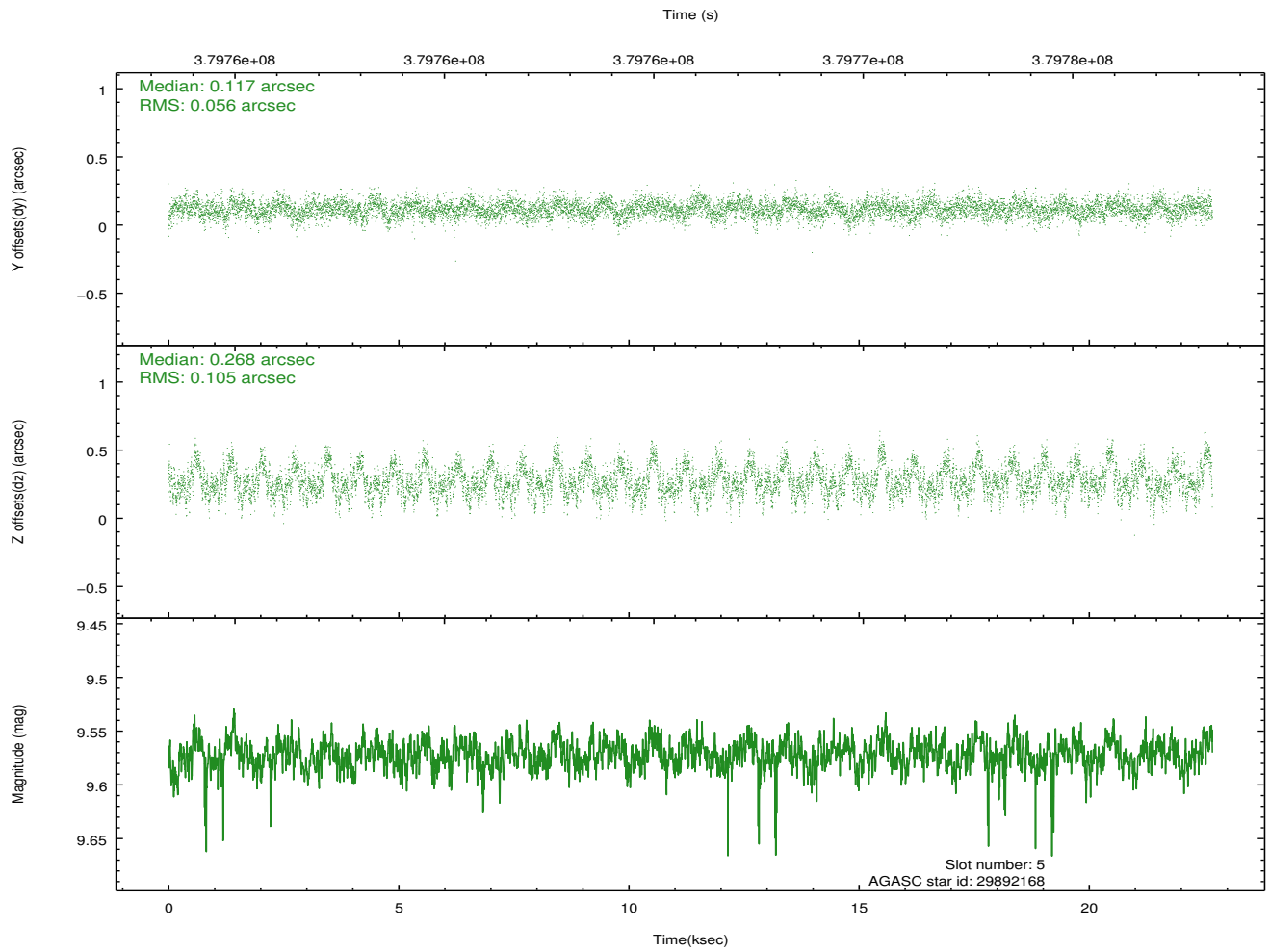
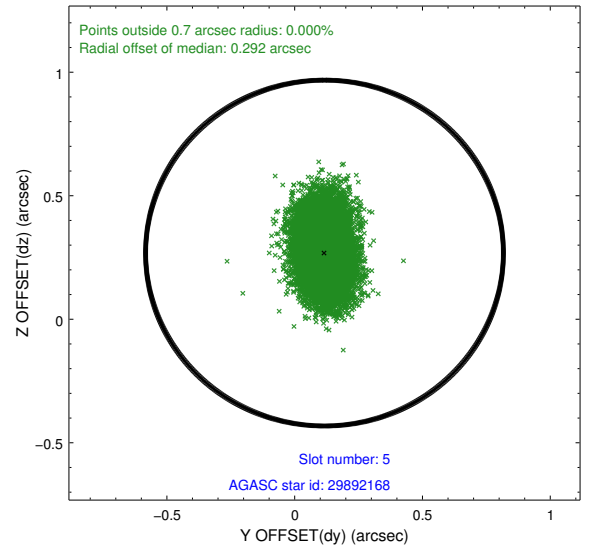
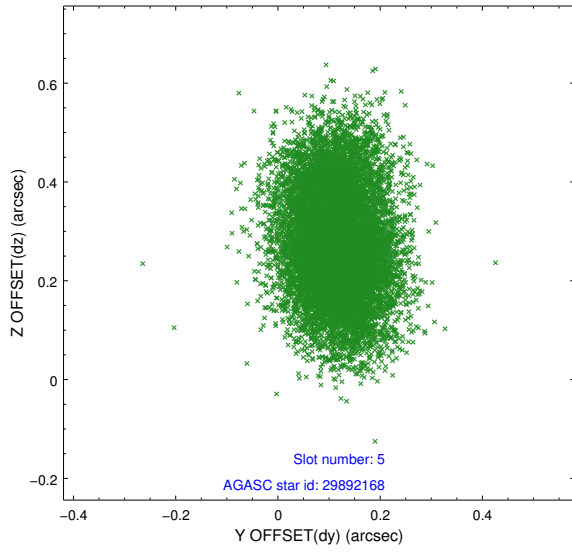
2.4.1 Slot 3



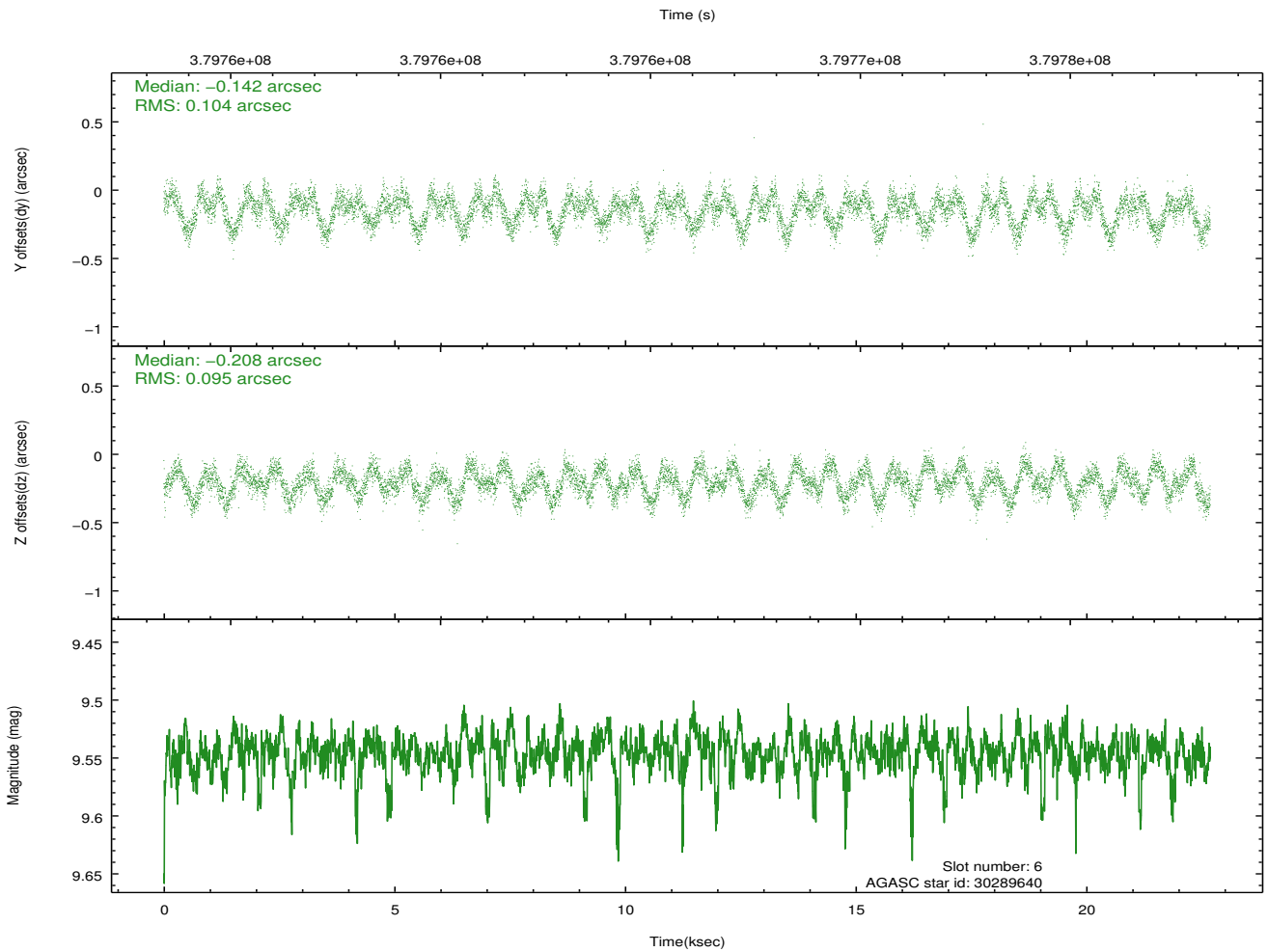
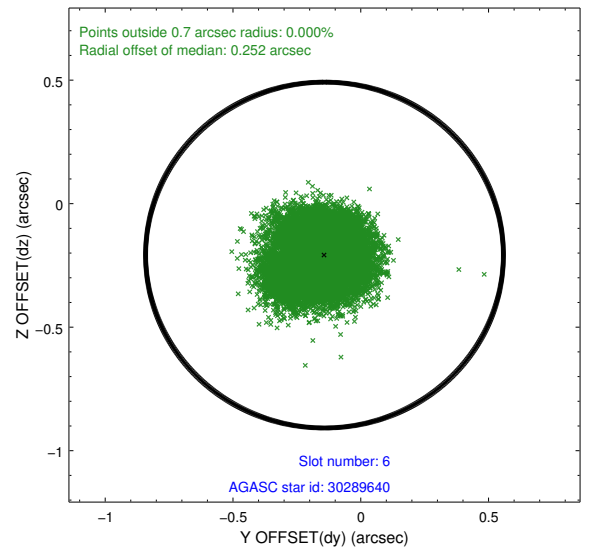
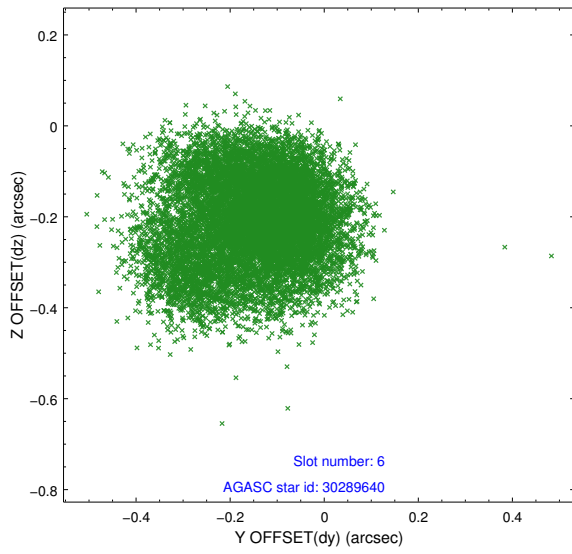
2.4.2 Slot 4



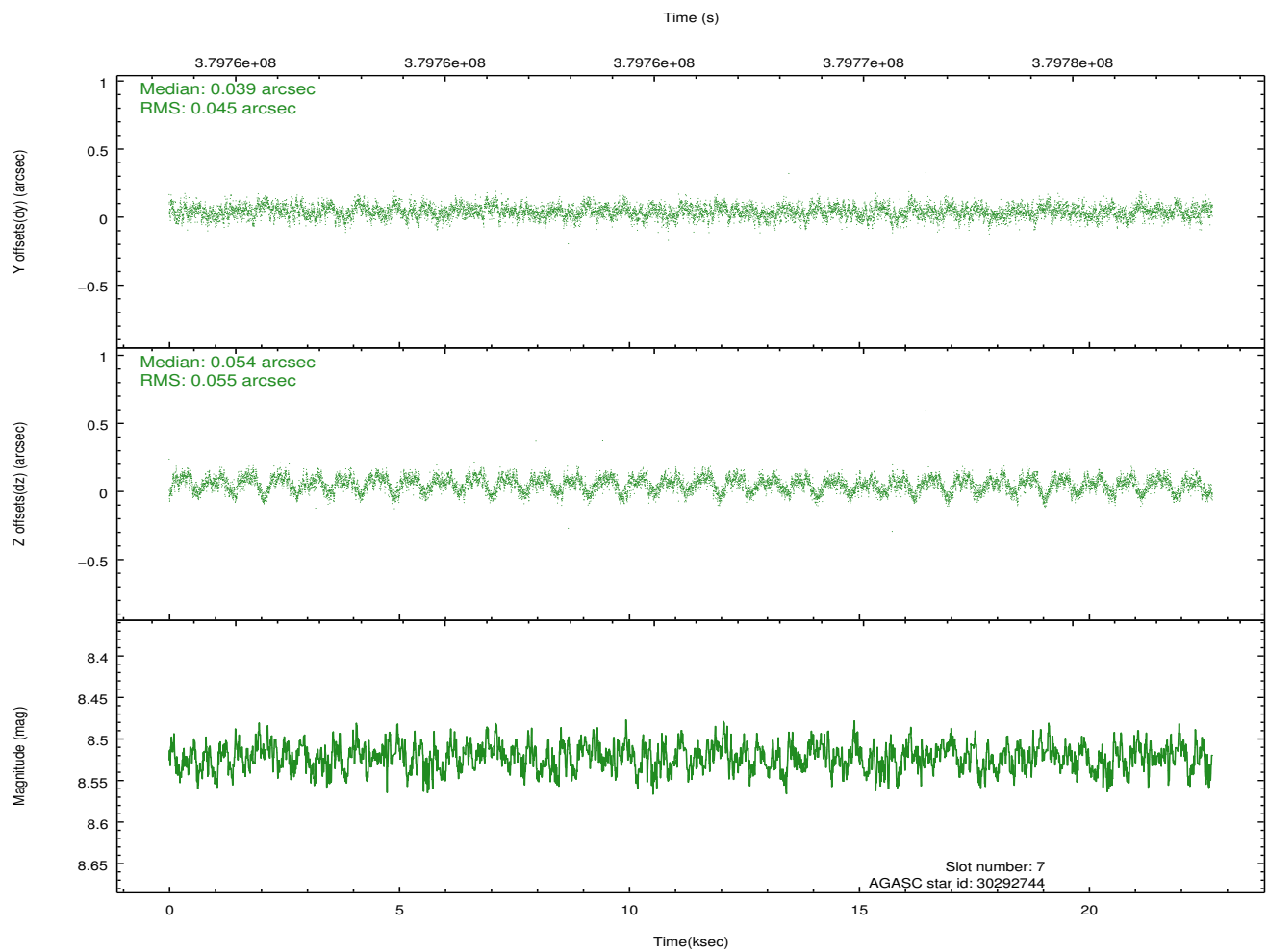
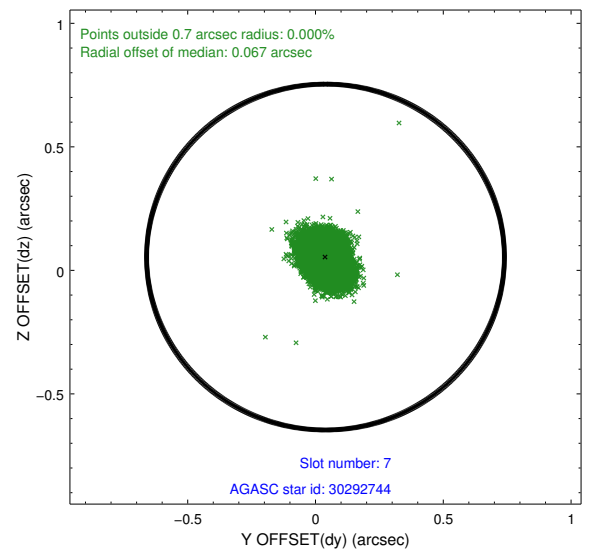
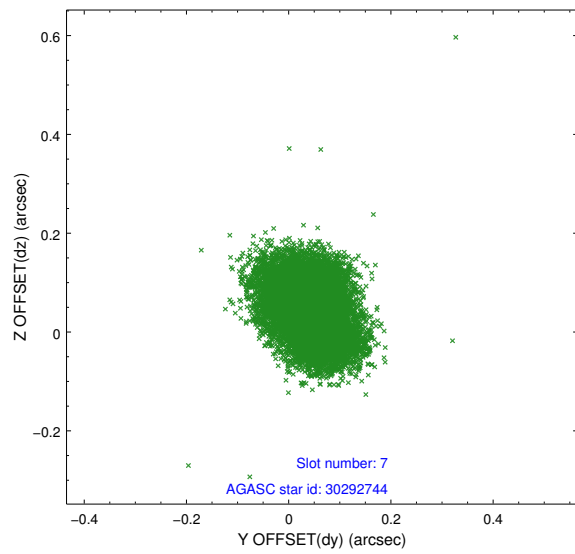
2.4.3 Slot 5



2.4.4 Slot 6

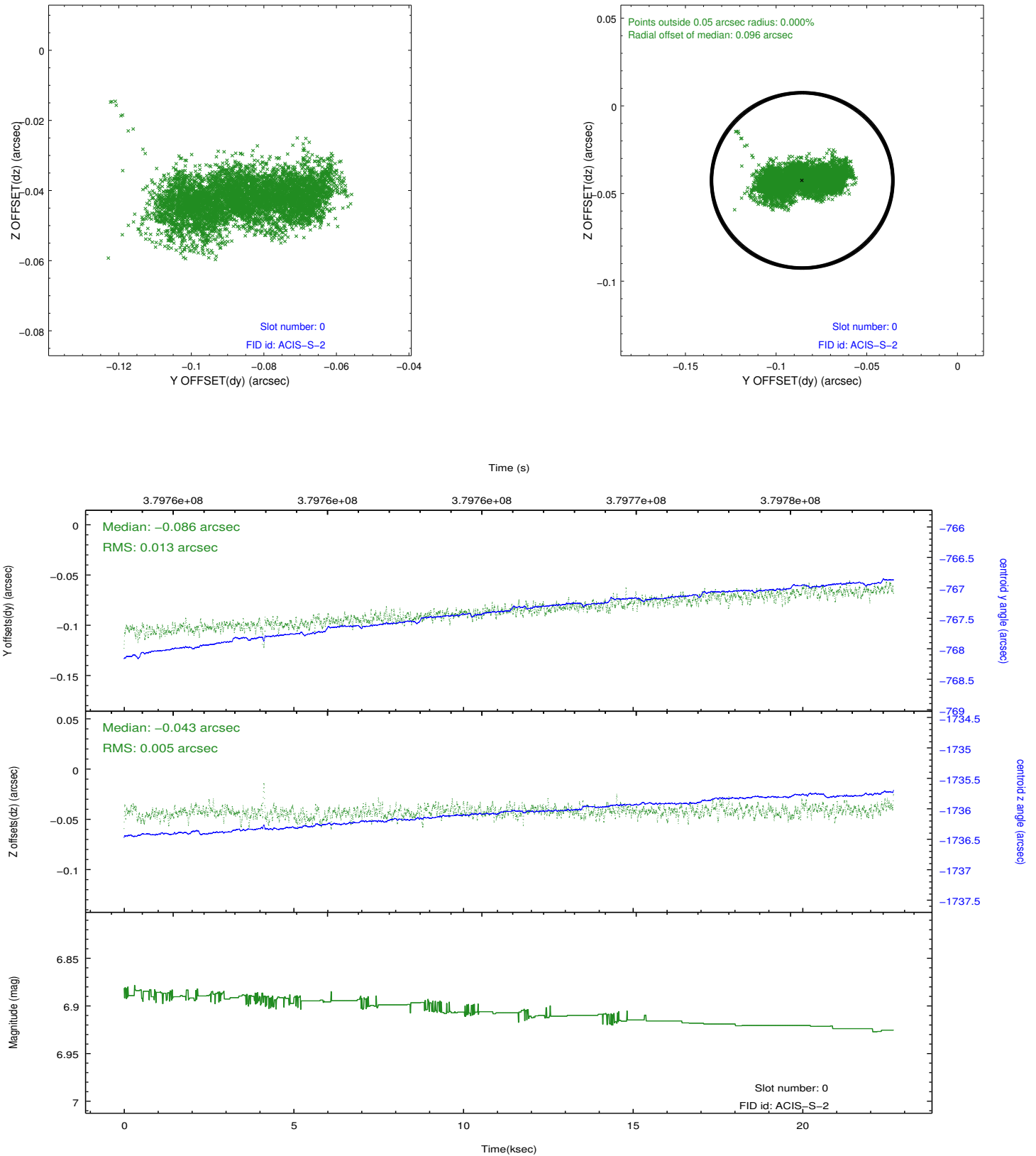


2.4.5 Slot 7

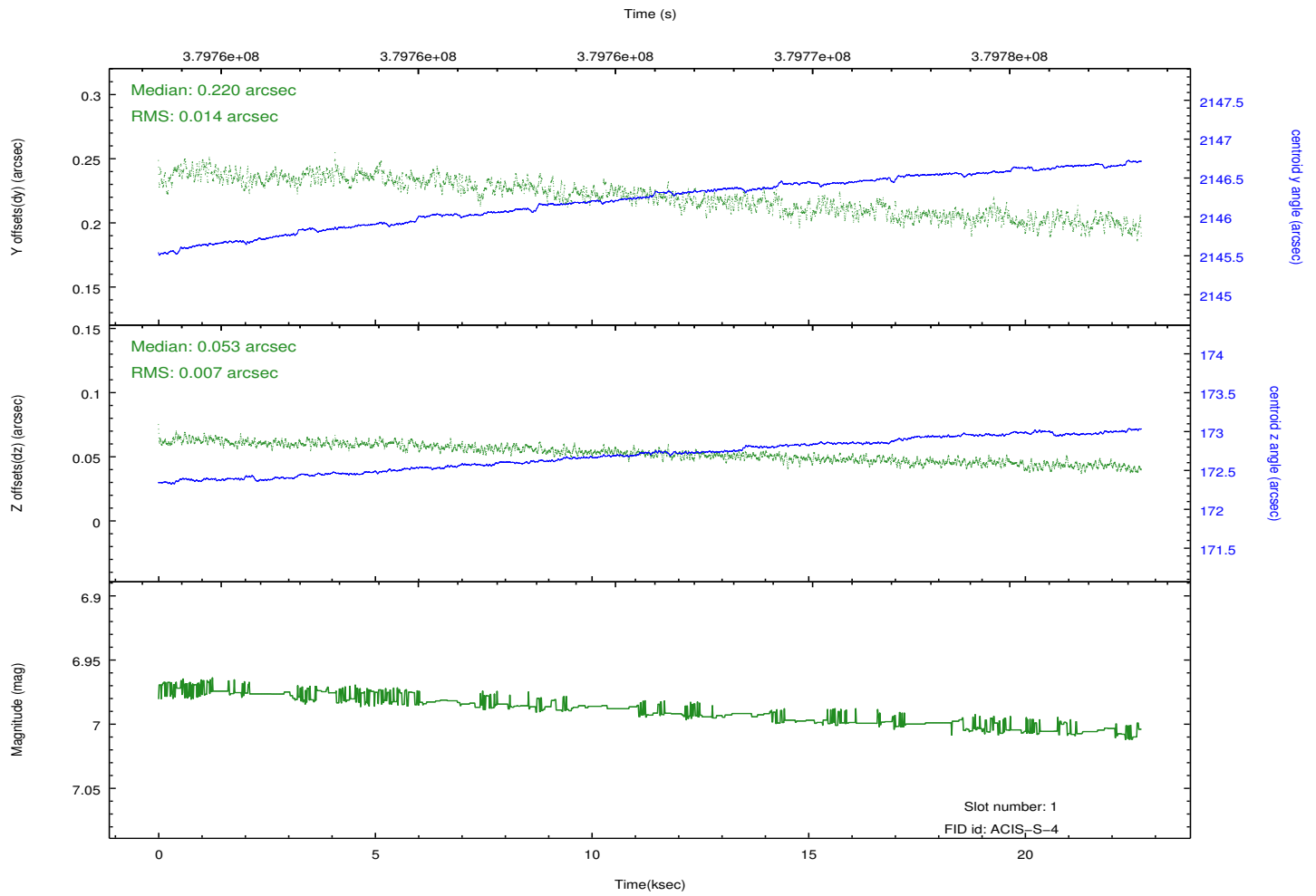
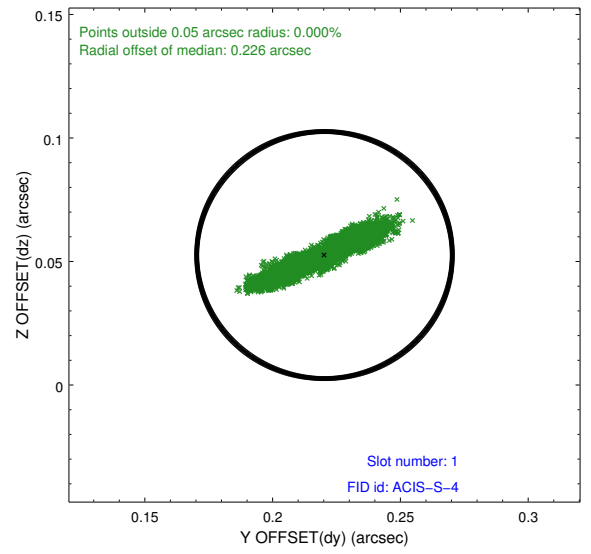
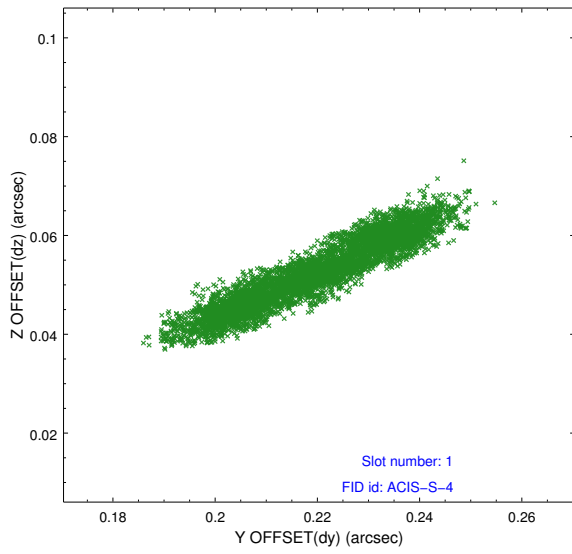


2.5 FID Slots

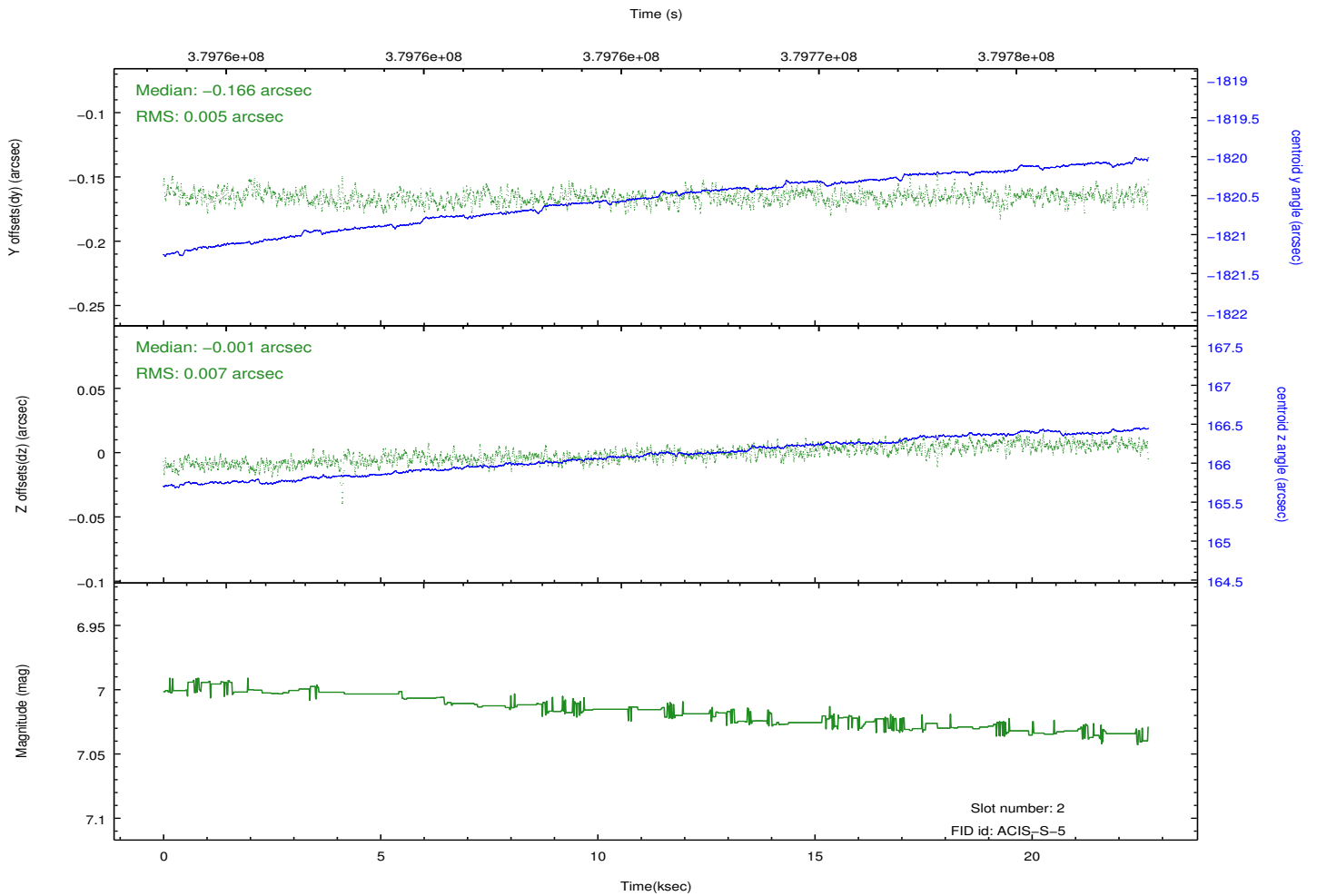
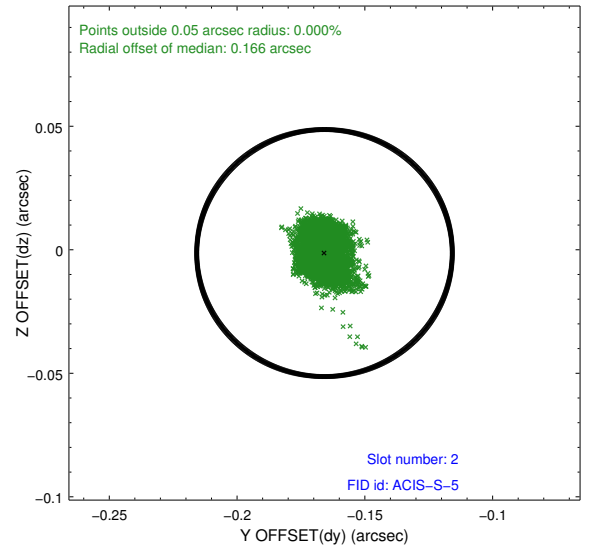
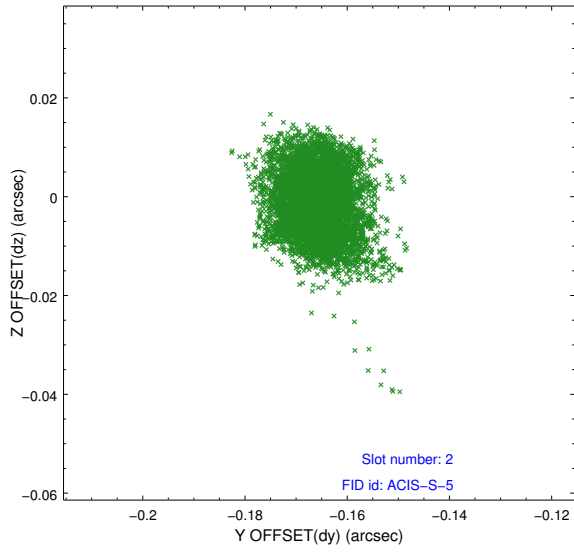
2.5.1 Slot 0



2.5.2 Slot 1



2.5.3 Slot 2



A Summary

A.1 Status

V&V Scientist	Jen Lauer
V&V Date (YYYY-MM-DD)	2012.06.25
V&V Edition	1
V&V Disposition and Status	OK
V&V Charge Time	22.062329164863

A.2 Comments