

V&V Reference Report

L2 ASCDS Version : 8.4.5

Observation 11772 - L2 Version 2
Chandra X-Ray Center

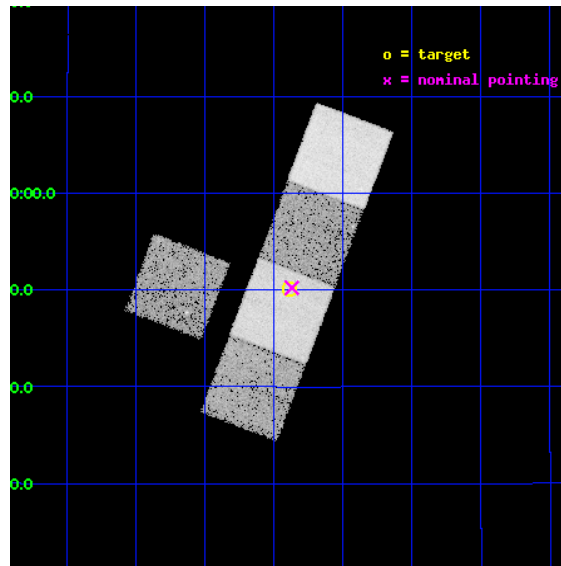
L2 Processing Date : Jun 24 2012

Contents

1	Front	2
2	OBI	3
2.1	OBI	3
2.1.1	Images	3
2.1.2	Bias	3
2.1.3	Parameters	4
2.1.4	Events	4
2.2	Compared Parameters	5
2.3	Aspect	6
2.4	Star Slots	9
2.4.1	Slot 3	9
2.4.2	Slot 4	10
2.4.3	Slot 5	11
2.4.4	Slot 6	12
2.4.5	Slot 7	13
2.5	FID Slots	14
2.5.1	Slot 0	14
2.5.2	Slot 1	15
2.5.3	Slot 2	16
A	Summary	17
A.1	Status	17
A.2	Comments	17

1 Front

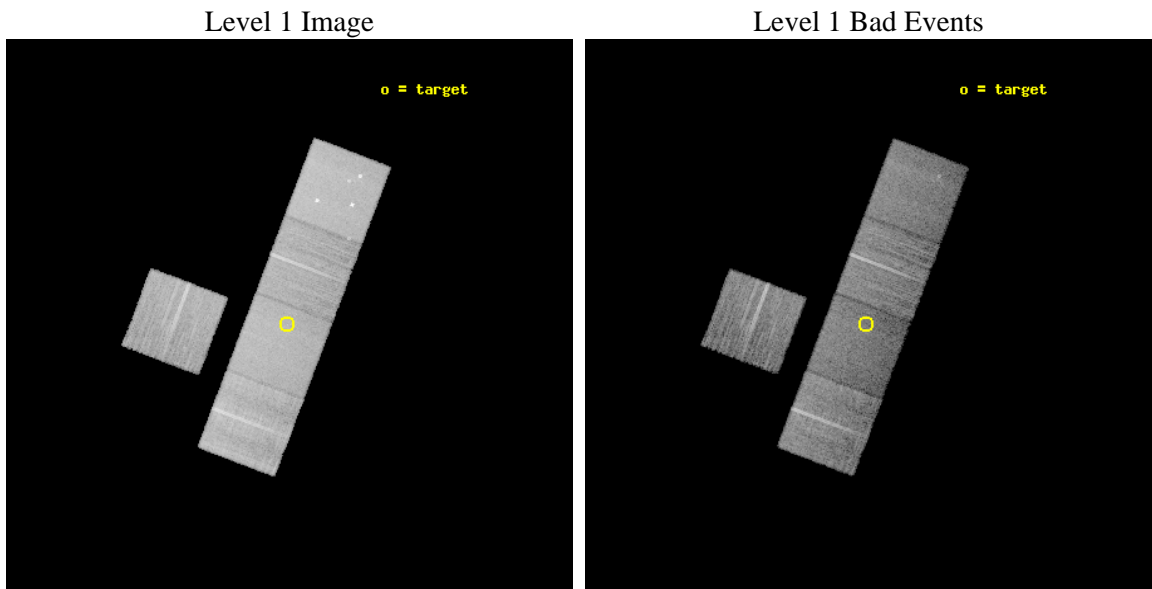
seq_num	900907	Sequence number
obs_id	11772	Observation id
title	A survey of dark gamma-ray burst hosts	Proposal title
observer	Dr Andrew Levan	Principal investigator
object	GRB100413A	Source name
dtcycle	0	
cycle	P	events from which exps? Prim/Second/Both
ra_targ	266.221583	Observer's specified target RA [deg]
dec_targ	15.834222	Observer's specified target Dec [deg]
ra_nom	266.21760243323	Nominal RA [deg]
dec_nom	15.837165072936	Nominal Dec [deg]
roll_nom	110.80599375016	Nominal Roll [deg]
revision	2	Processing version of data
ontime	15134.200116396	Sum of GTIs [s]
livetime	14936.460650239	Livetime [s]
ontime3	15134.200116396	Sum of GTIs [s]
ontime5	15134.200116396	Sum of GTIs [s]
ontime6	15134.200116396	Sum of GTIs [s]
ontime7	15134.200116396	Sum of GTIs [s]
ontime8	15131.059146047	Sum of GTIs [s]
l2events	175327	Number of level 2 events



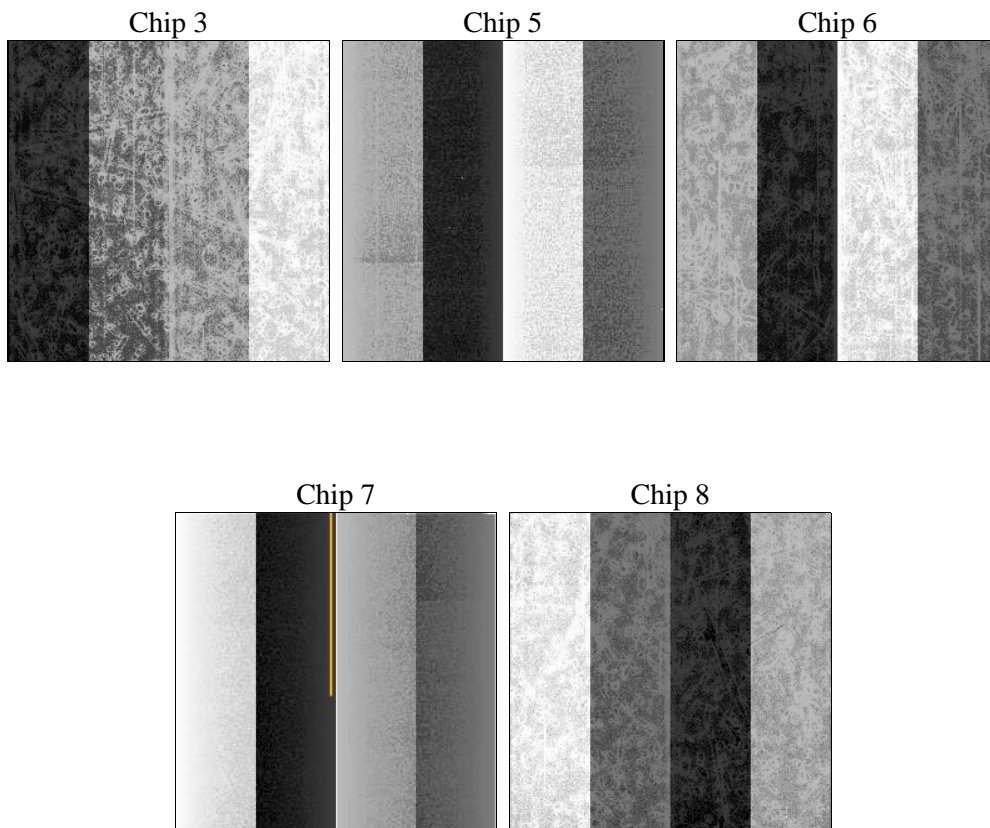
2 OBI

2.1 OBI

2.1.1 Images



2.1.2 Bias



2.1.3 Parameters

obi_num	0	Obi number	sched_exp_time	15000.000000	[s] Scheduled observation exposure time
ascdsver	8.4.5	Processing system revision	ontime	15134.200116396	Sum of GTIs [s]
caldbver	4.4.10	 	ontime3	15134.200116396	Sum of GTIs [s]
date	2012-06-24T09:52:21	Date and time of file creation	ontime5	15134.200116396	Sum of GTIs [s]
revision	2	Processing version of data	ontime6	15134.200116396	Sum of GTIs [s]
			ontime7	15134.200116396	Sum of GTIs [s]
			ontime8	15131.059146047	Sum of GTIs [s]
			l1events	690798	Number of level 1 events

2.1.4 Events

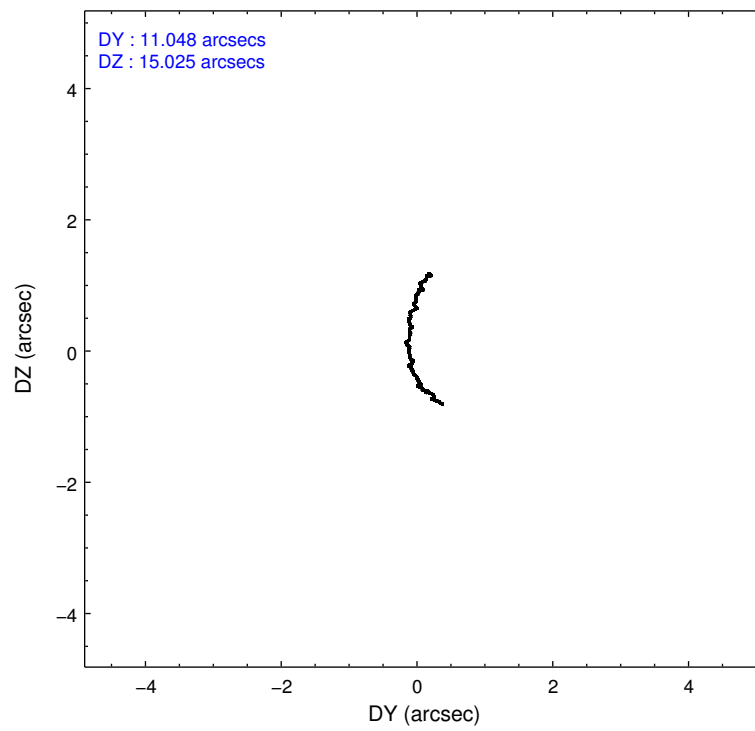
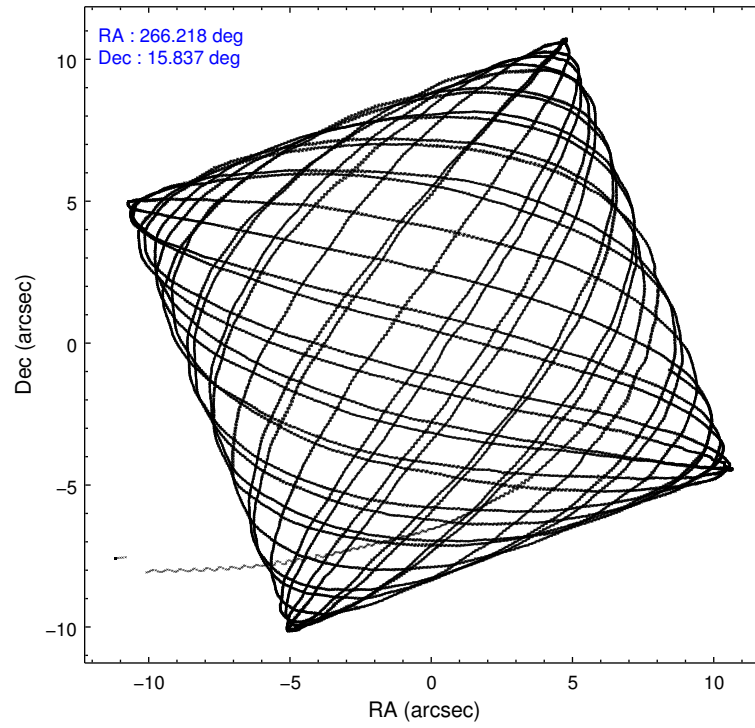
	ccd 3	ccd 5	ccd 6	ccd 7	ccd 8
level 1 events	112577	175775	115307	139241	147898
rejected events	101121	88834	102492	76905	108864
rejected %	89%	50%	88%	55%	73%

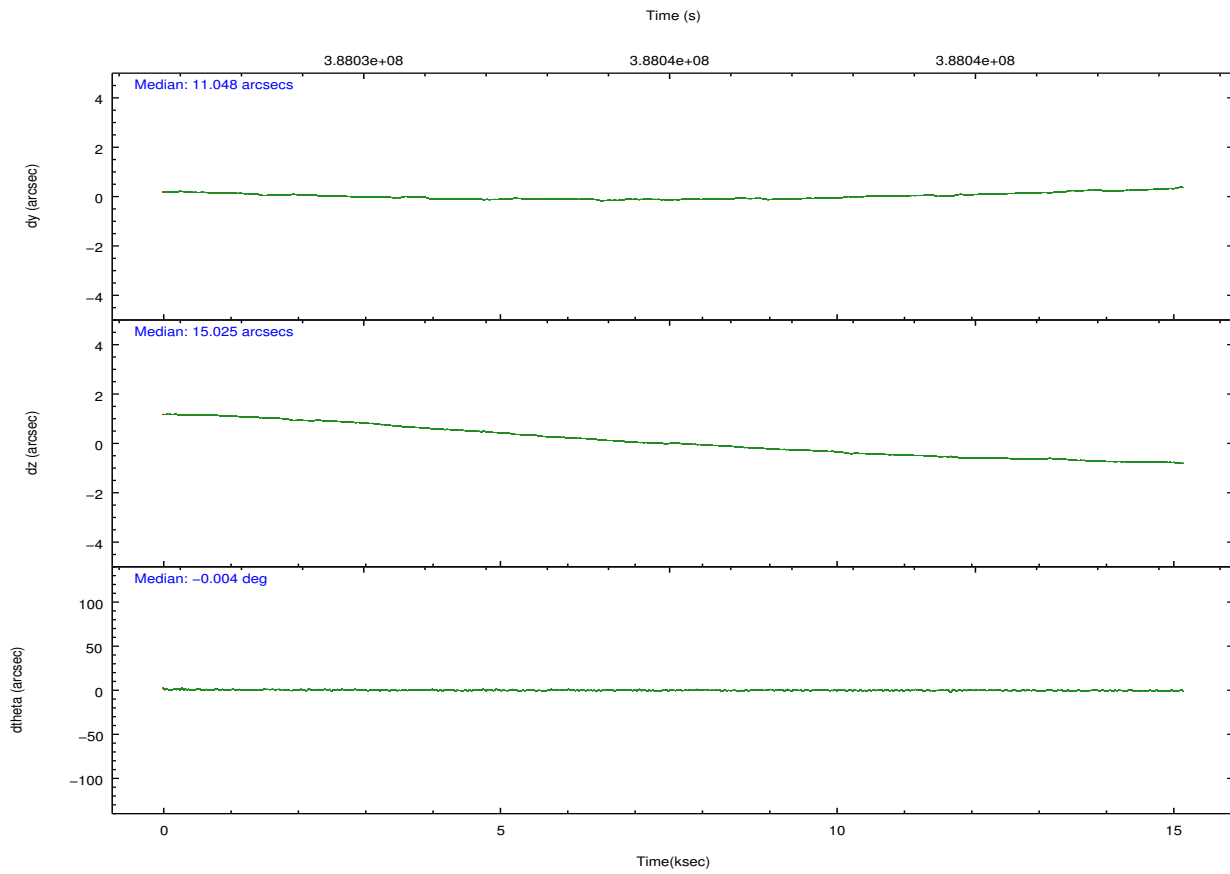
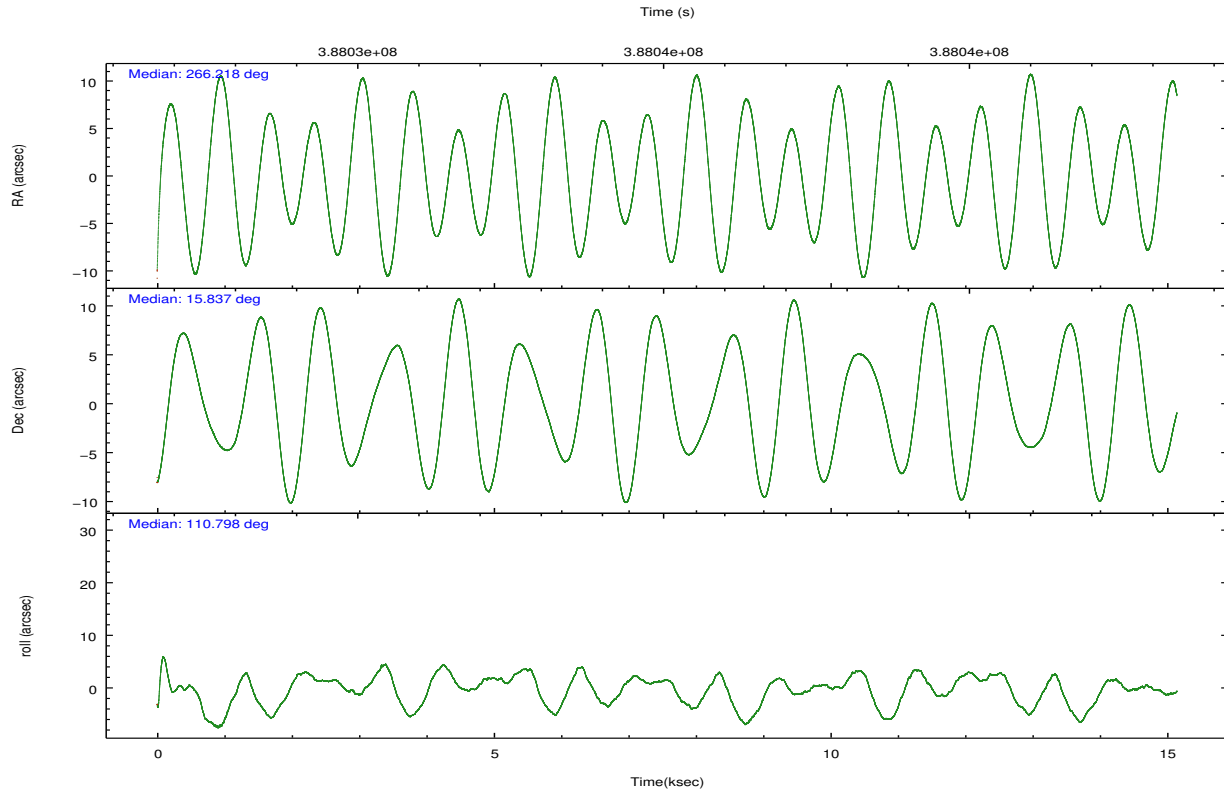
	ccd 3	ccd 5	ccd 6	ccd 7	ccd 8
grade 0 events	4165	10530	4529	5873	11789
	3%	5%	3%	4%	7%
grade 1 events	76	321	52	165	148
	0%	0%	0%	0%	0%
grade 2 events	2510	25828	2984	12795	9020
	2%	14%	2%	9%	6%
grade 3 events	1307	3504	1314	5597	4153
	1%	1%	1%	4%	2%
grade 4 events	1244	3233	1269	5568	3924
	1%	1%	1%	3%	2%
grade 5 events	5149	13455	5196	14492	7477
	4%	7%	4%	10%	5%
grade 6 events	2330	44671	2833	33040	10518
	2%	25%	2%	23%	7%
grade 7 events	95796	74233	97130	61711	100869
	85%	42%	84%	44%	68%

2.2 Compared Parameters

Parameter	Planned	Actual	Parameter	Planned	Actual
Instrument	ACIS	ACIS	Obspar format version number	7	7
Detector	ACIS-35678	ACIS-35678	Obspar file type	PREDICTED	ACTUAL
Grating	NONE	NONE	Obspar update status	NONE	UPDATED
Data mode	VFAINT	VFAINT	Number of optional ACIS chips dropped	0	0
Observation mode	POINTING	POINTING	On-chip summing requested	N	N
[deg] Pointing RA	266.239857	266.2176024332342	Subarray requested	NONE	NONE
[deg] Pointing Dec	15.820188	15.83716507293616	Alternating exposures requested	N	N
[deg] Pointing Roll	110.643309	110.8059937501649	[s] Primary exposure time	0.000000	3.1
[mm] SIM focus pos	-0.684267	-0.6828225247311905			
[mm] SIM defocus	0	0.001444936568705701			
[mm] SIM translation stage pos	-190.132523	-190.1425803651734			
[mm] SIM translation stage offset	0	0.01005778216563158			
[s] Observation start time (MET)	388027623.184000	388026583.97255			
Observation start date	2010-04-19T01:25:57	2010-04-19T01:09:43			
[s] Observation end time (MET)	388042623.184000	388043456.49841			
Observation end date	2010-04-19T05:35:57	2010-04-19T05:50:56			
Read mode	TIMED	TIMED			

2.3 Aspect



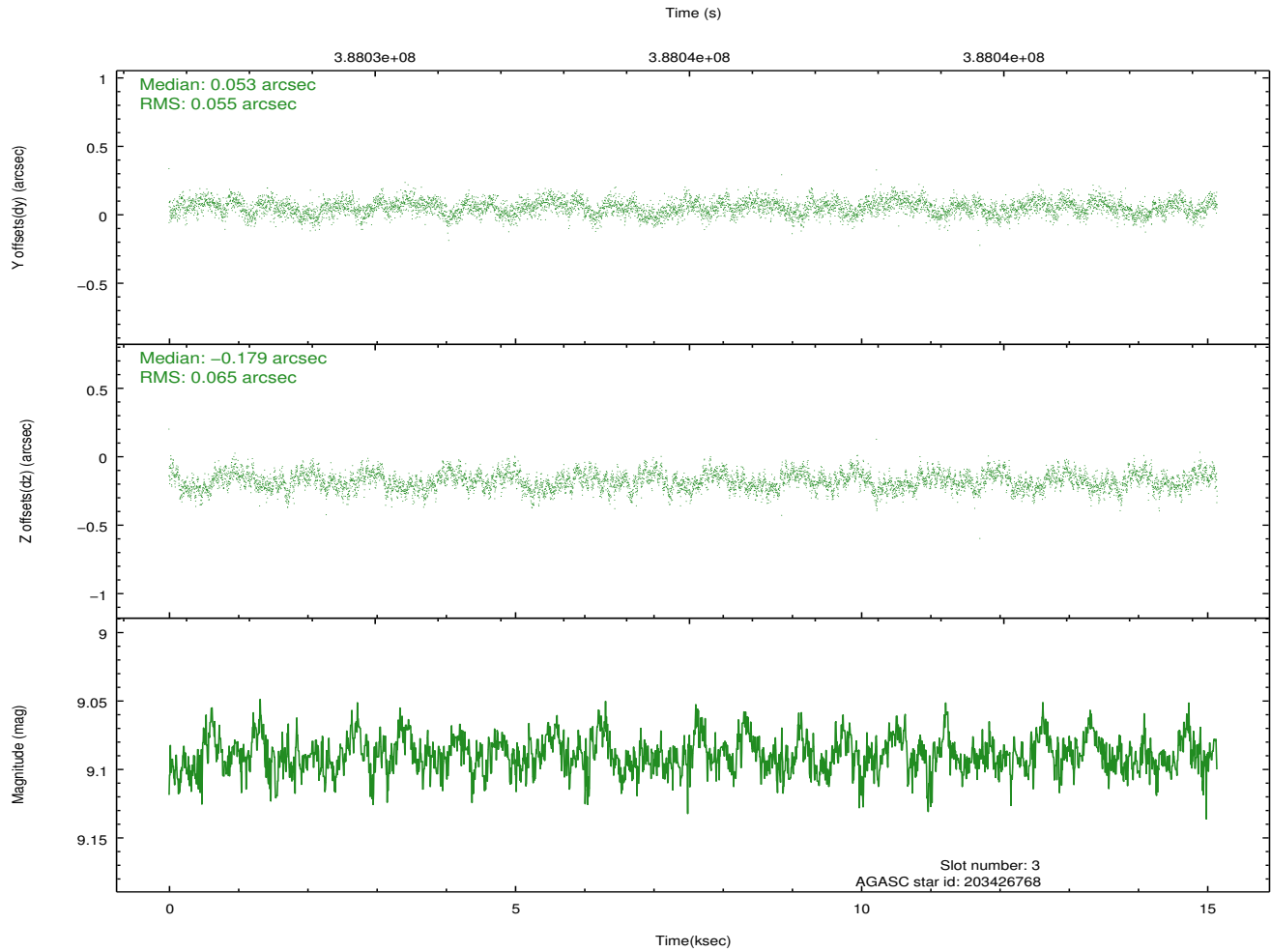
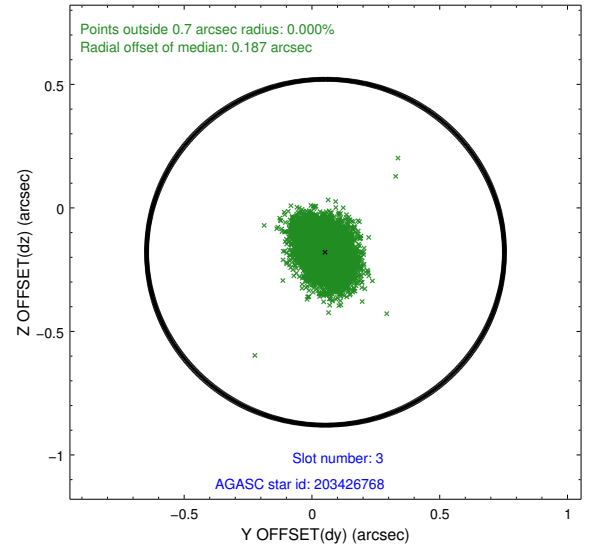
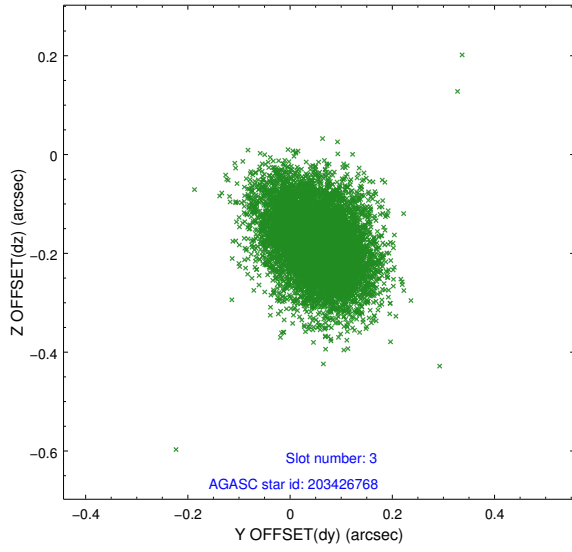


Slot Statistics

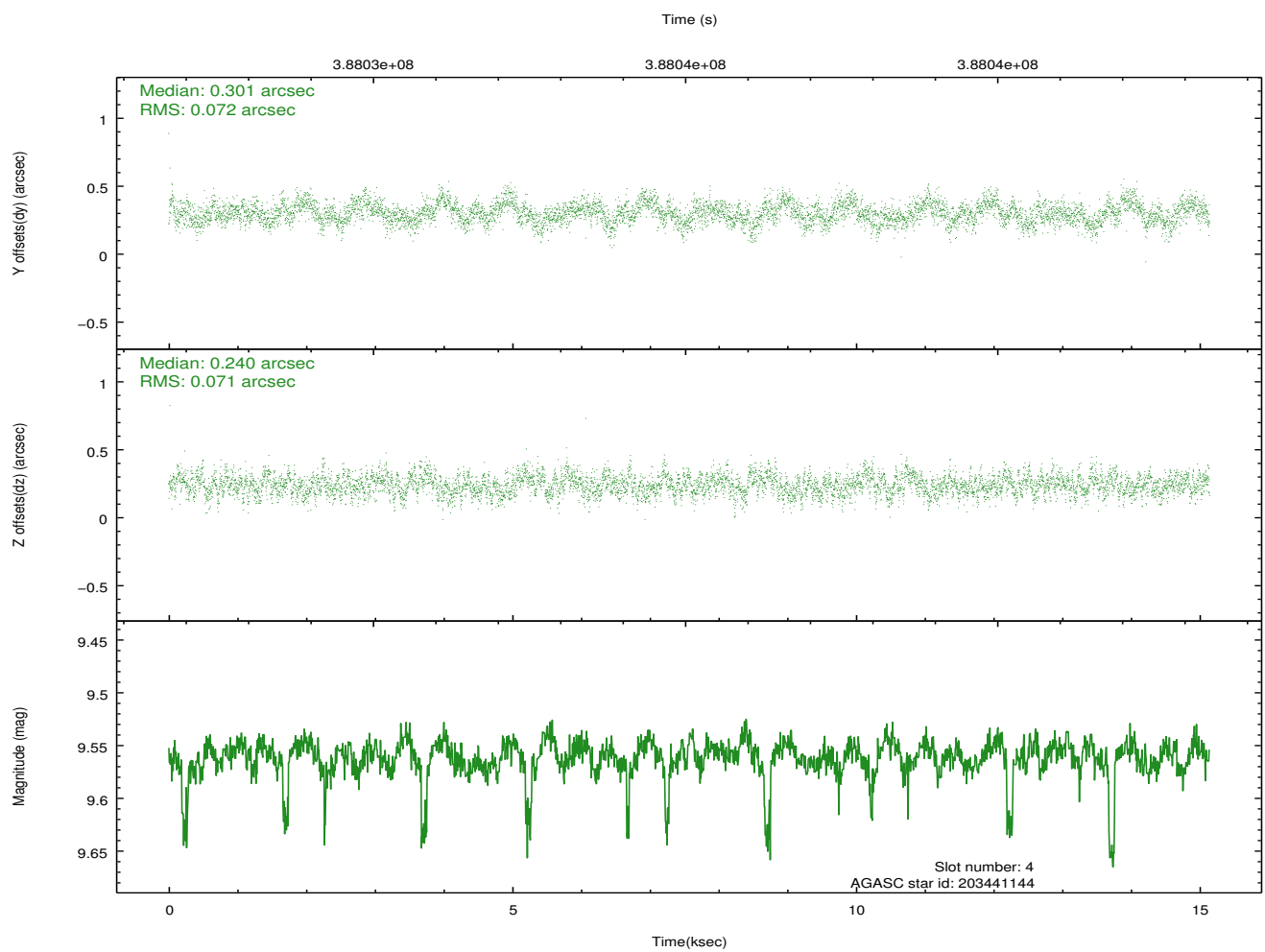
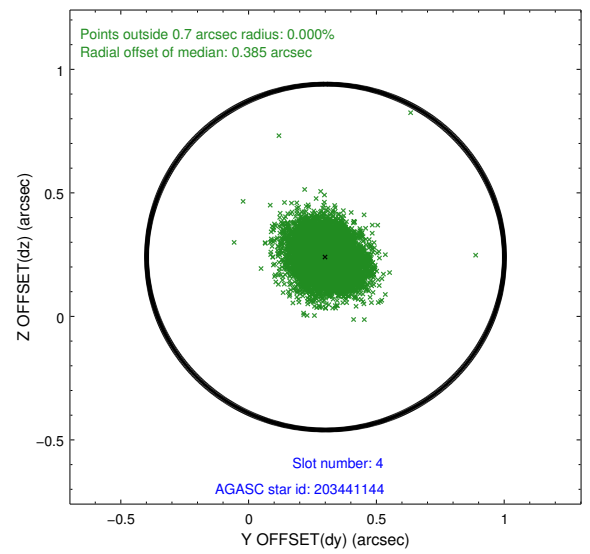
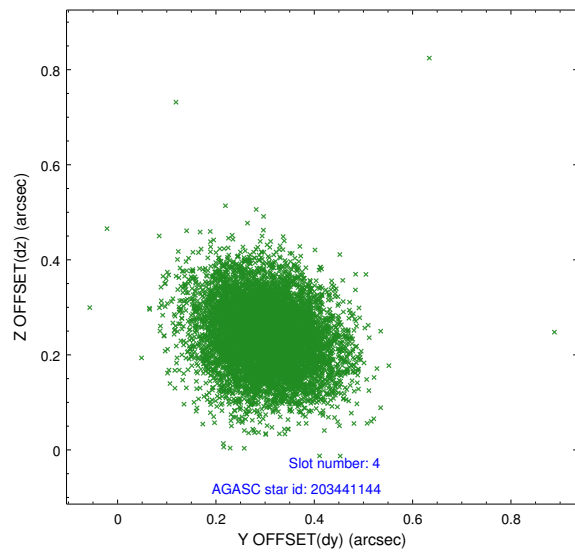
slot	status	id	mag	n_pts	med_dy	med_dz	dr1	dr2	ra	dec	mean_y	mean_z
0	FID	ACIS-S-2	6.88	3694	-0.079	-0.051	0.008	0.013	0.000000	0.000000	-764.02	-1736.49
1	FID	ACIS-S-4	6.97	3694	0.074	0.044	0.008	0.014	0.000000	0.000000	2149.28	171.77
2	FID	ACIS-S-6	7.10	3694	-0.022	0.015	0.010	0.017	0.000000	0.000000	398.41	809.48
3	GUIDE	203426768	9.09	7381	0.053	-0.179	0.090	0.149	266.090889	16.006411	809.42	246.31
4	GUIDE	203441144	9.56	7355	0.301	0.240	0.107	0.175	266.541372	15.472529	-1538.71	-537.54
5	GUIDE	203298584	8.75	7381	-0.056	-0.242	0.104	0.165	265.650131	15.600098	-18.32	2191.91
6	GUIDE	203293368	7.97	7385	-0.061	-0.205	0.092	0.148	265.912881	15.014095	-2314.45	2087.10
7	GUIDE	203431400	9.18	7380	-0.234	0.396	0.099	0.162	266.833251	16.165885	443.93	-2358.68

2.4 Star Slots

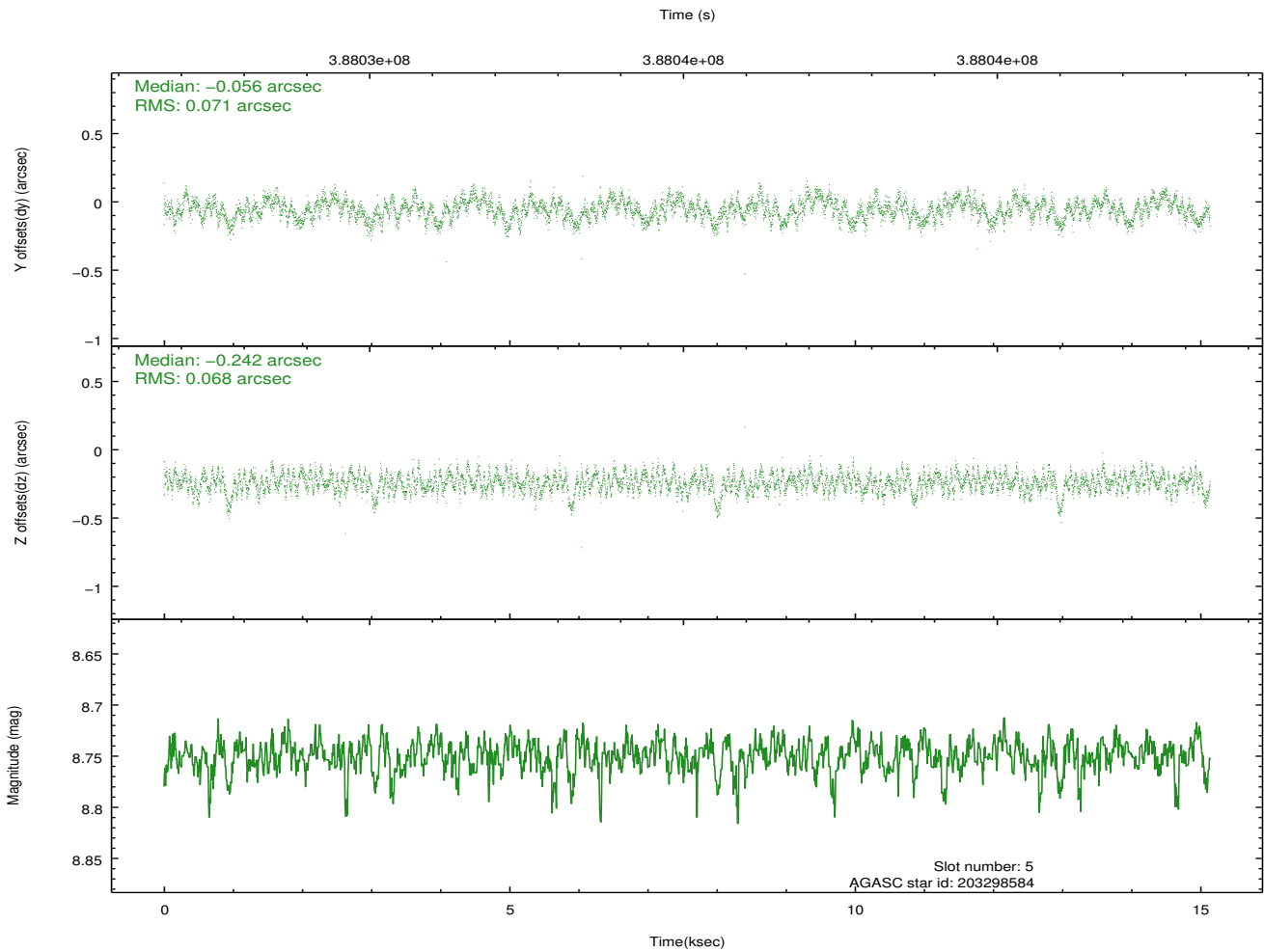
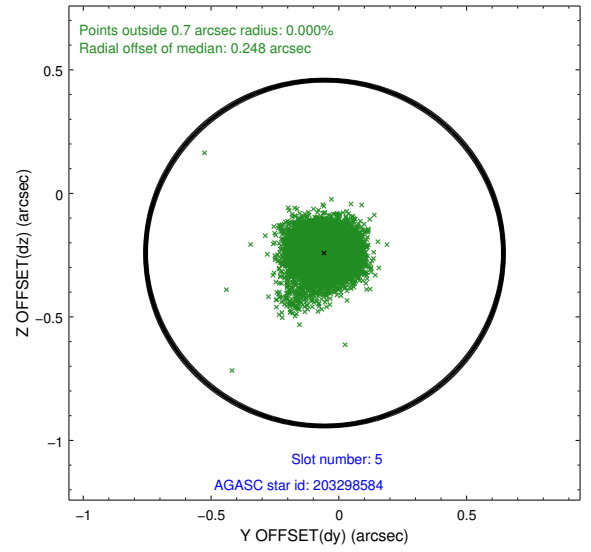
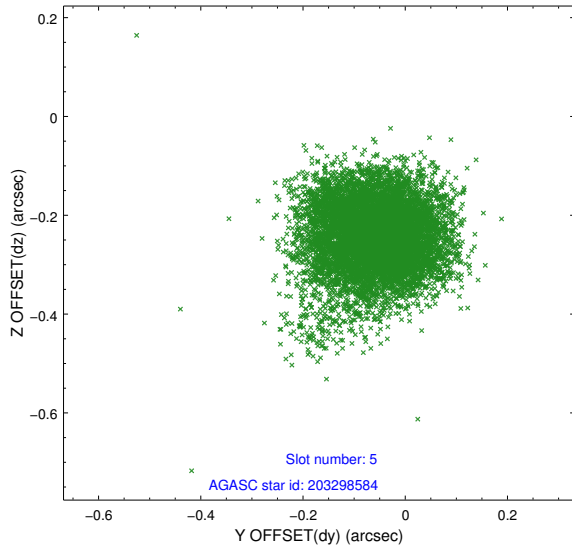
2.4.1 Slot 3



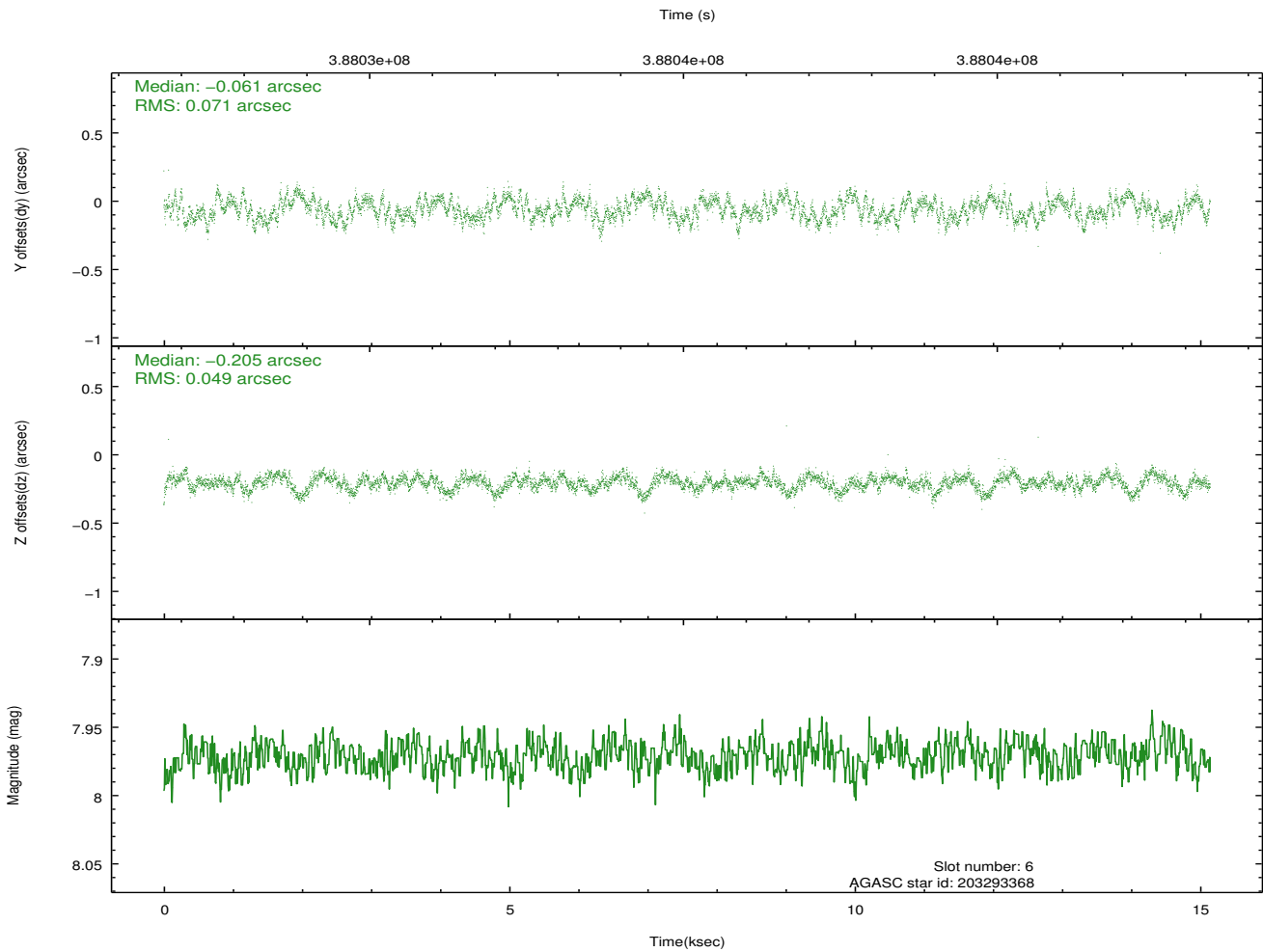
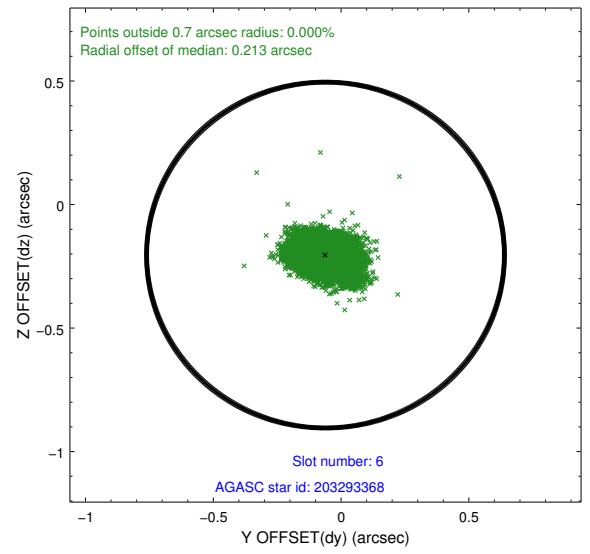
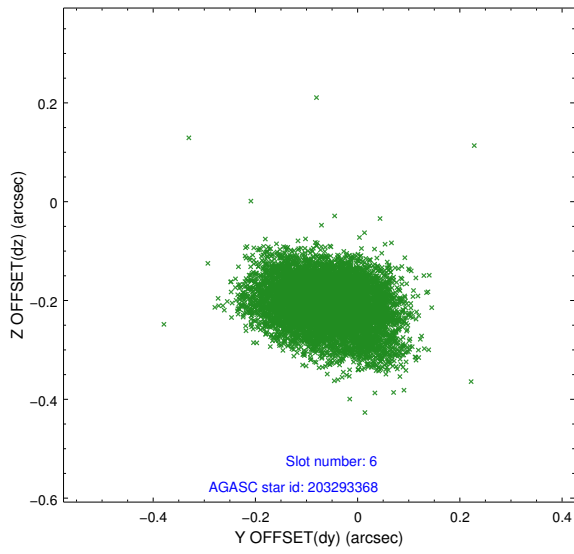
2.4.2 Slot 4



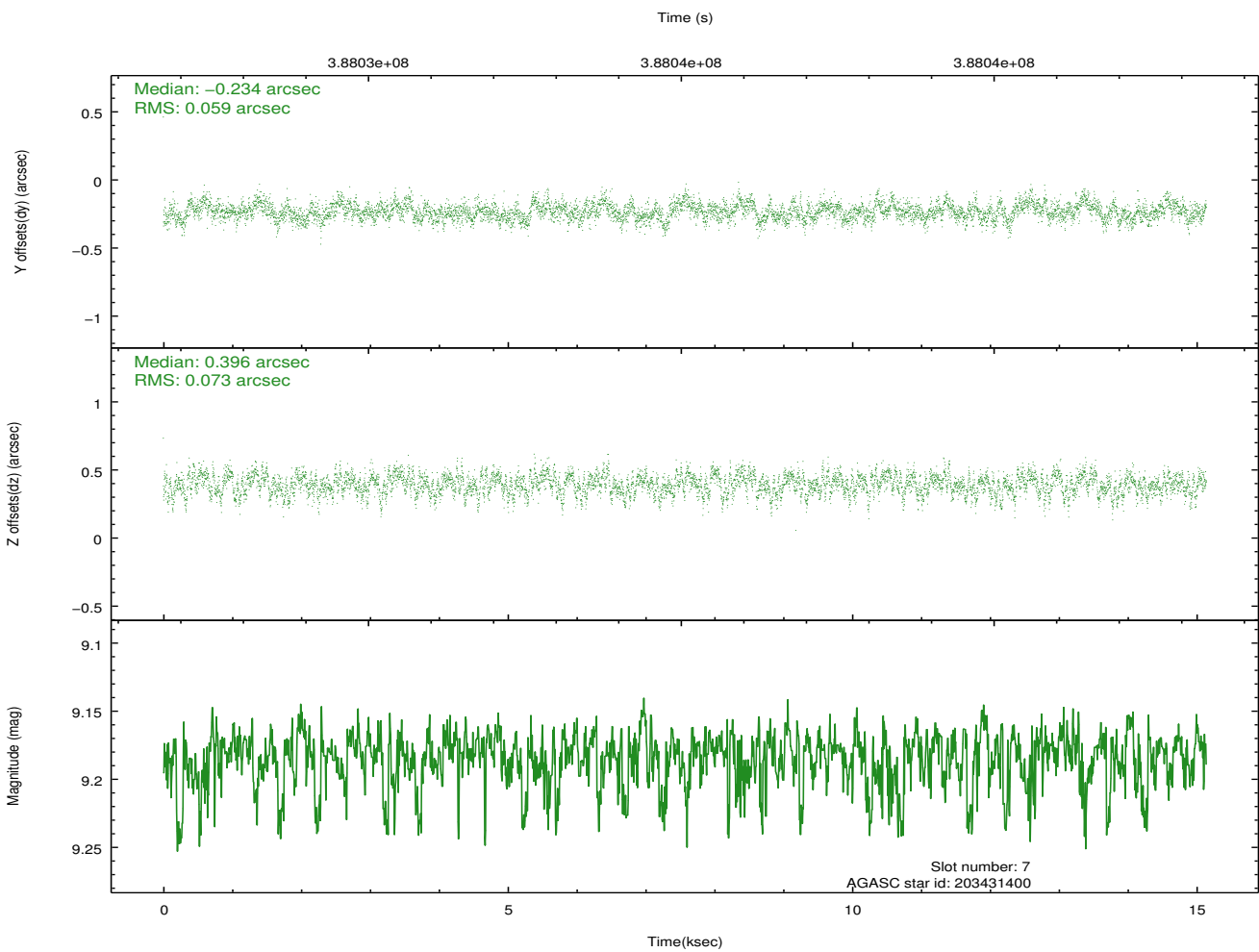
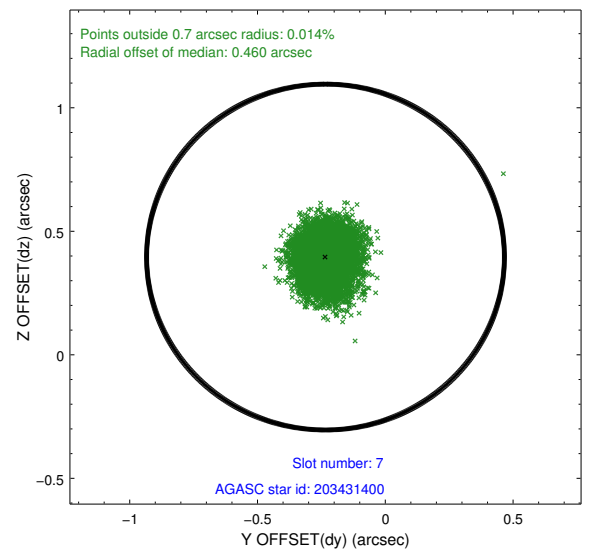
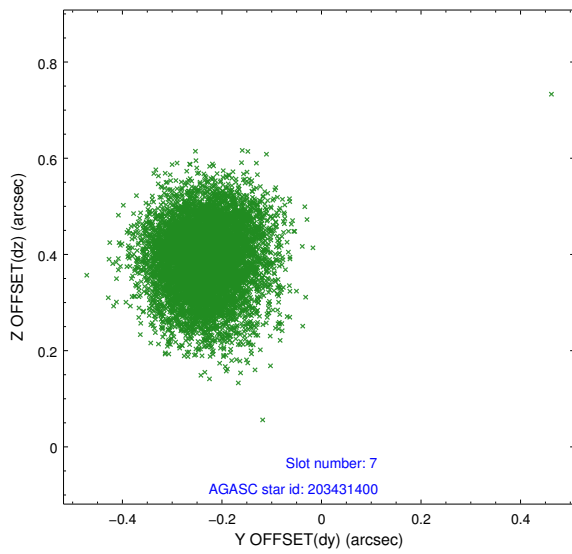
2.4.3 Slot 5



2.4.4 Slot 6

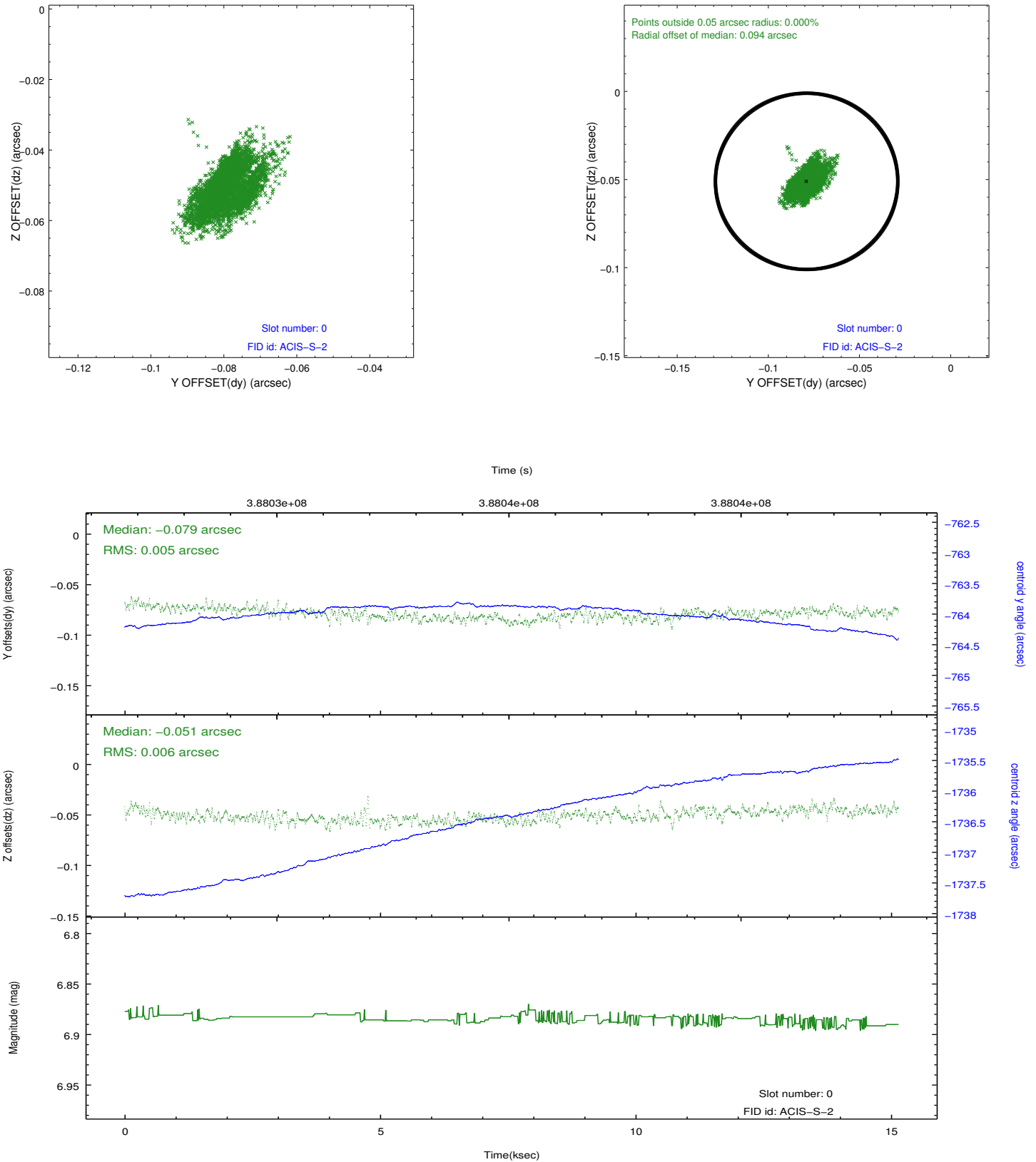


2.4.5 Slot 7

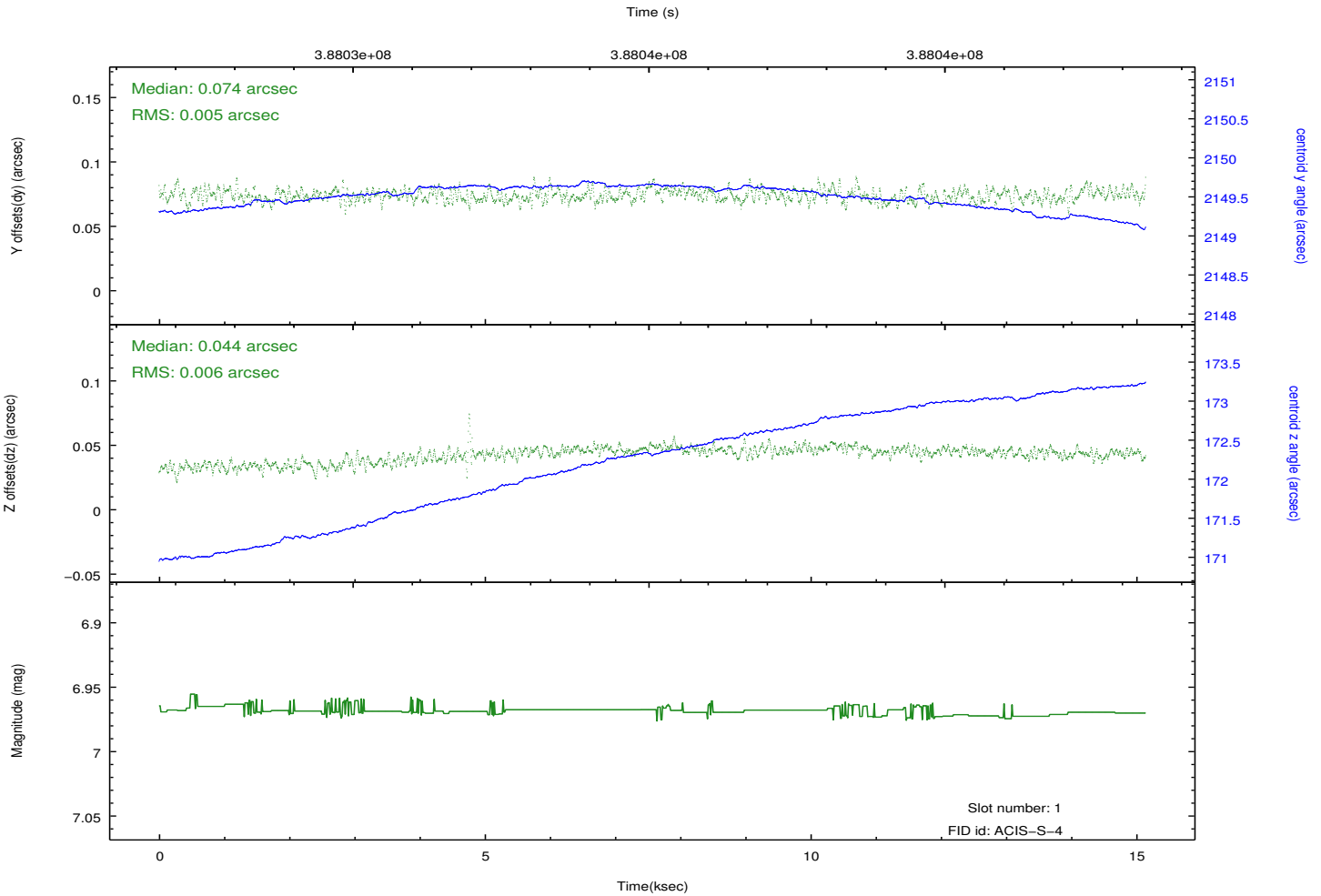
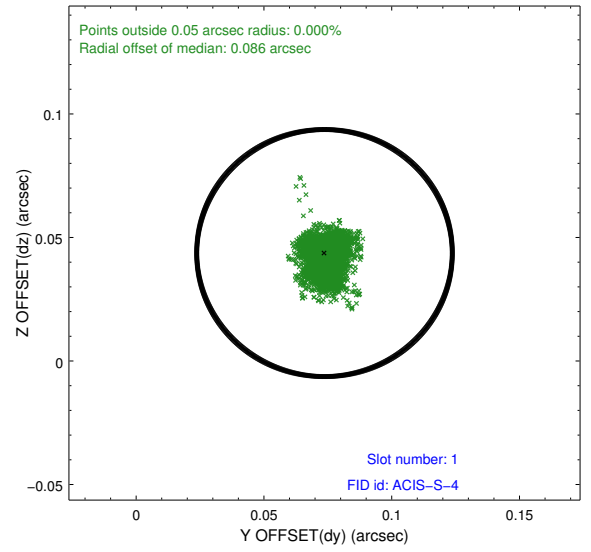
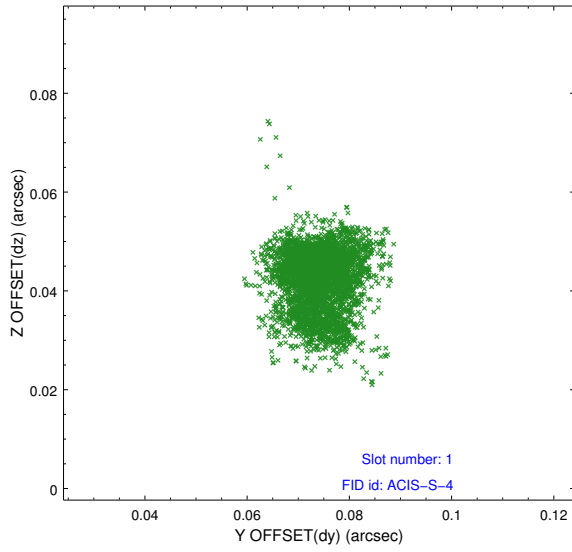


2.5 FID Slots

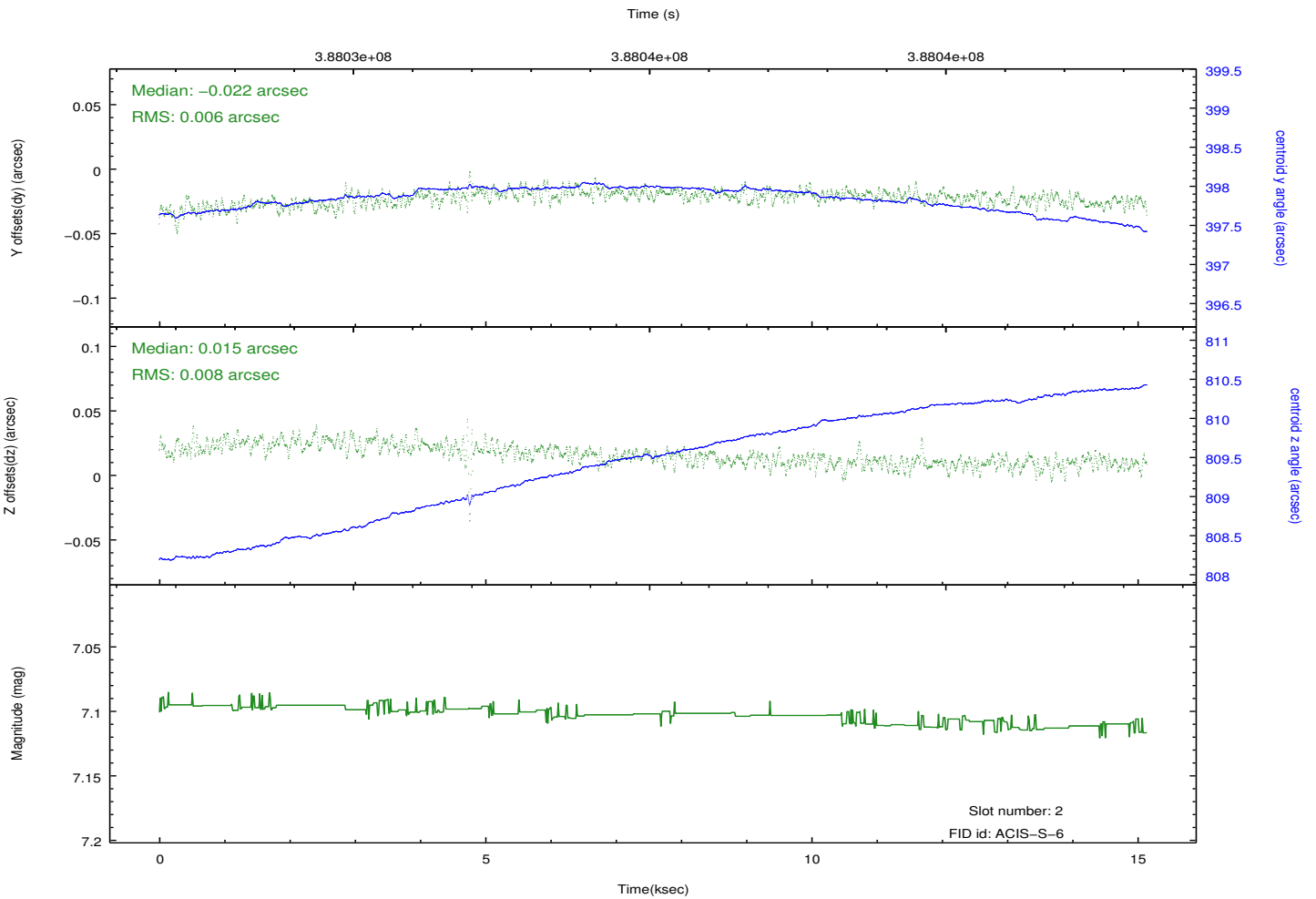
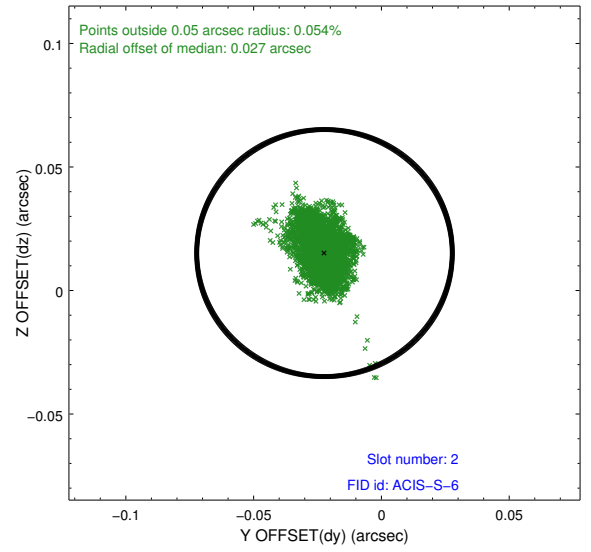
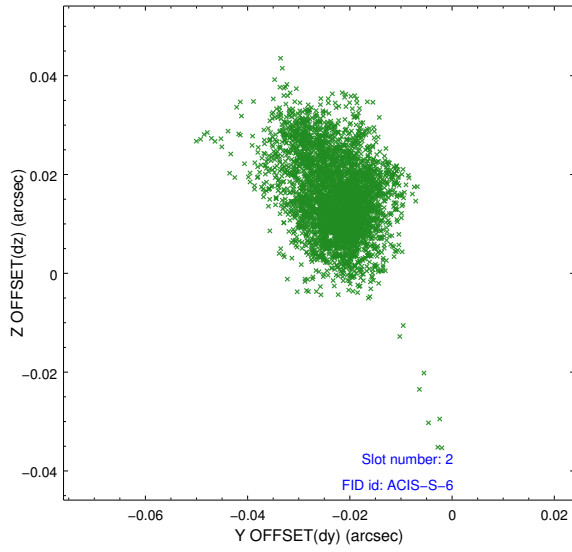
2.5.1 Slot 0



2.5.2 Slot 1



2.5.3 Slot 2



A Summary

A.1 Status

V&V Scientist	Beth Sundheim
V&V Date (YYYY-MM-DD)	2012.07.01
V&V Edition	1
V&V Disposition and Status	OK
V&V Charge Time	15.134200116396

A.2 Comments