

V&V Reference Report

L2 ASCDS Version : 8.4.5

Observation 11822 - L2 Version 2
Chandra X-Ray Center

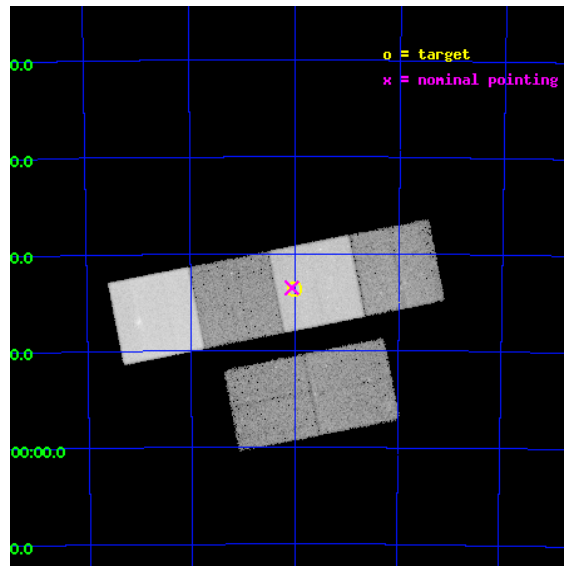
L2 Processing Date : Jun 26 2012

Contents

1	Front	2
2	OBI	3
2.1	OBI	3
2.1.1	Images	3
2.1.2	Bias	3
2.1.3	Parameters	4
2.1.4	Events	4
2.2	Compared Parameters	5
2.3	Aspect	6
2.4	Star Slots	9
2.4.1	Slot 3	9
2.4.2	Slot 4	10
2.4.3	Slot 5	11
2.4.4	Slot 6	12
2.4.5	Slot 7	13
2.5	FID Slots	14
2.5.1	Slot 0	14
2.5.2	Slot 1	15
2.5.3	Slot 2	16
A	Summary	17
A.1	Status	17
A.2	Comments	17

1 Front

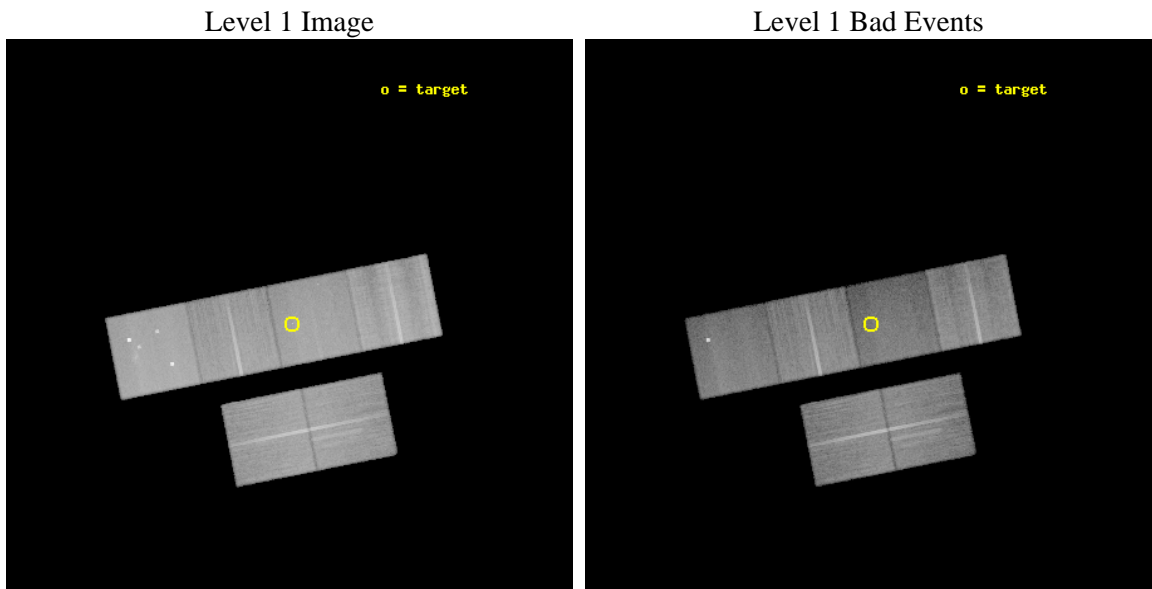
seq_num	501339	Sequence number
obs_id	11822	Observation id
title	X-ray emission from the old pulsar B1451-68	Proposal title
observer	Professor Gordon Garmire	Principal investigator
object	PSR B1451-68	Source name
dtcycle	0	
cycle	P	events from which exps? Prim/Second/Both
ra_targ	224.000833	Observer's specified target RA [deg]
dec_targ	-68.7275	Observer's specified target Dec [deg]
ra_nom	224.01337101451	Nominal RA [deg]
dec_nom	-68.725793324678	Nominal Dec [deg]
roll_nom	348.77289331155	Nominal Roll [deg]
revision	2	Processing version of data
ontime	35139.199869156	Sum of GTIs [s]
livetime	34694.246162127	Livetime [s]
ontime2	35135.95883882	Sum of GTIs [s]
ontime3	35132.717838585	Sum of GTIs [s]
ontime5	35139.199869156	Sum of GTIs [s]
ontime6	35135.958848774	Sum of GTIs [s]
ontime7	35139.199869156	Sum of GTIs [s]
ontime8	35135.958848774	Sum of GTIs [s]
l2events	390545	Number of level 2 events



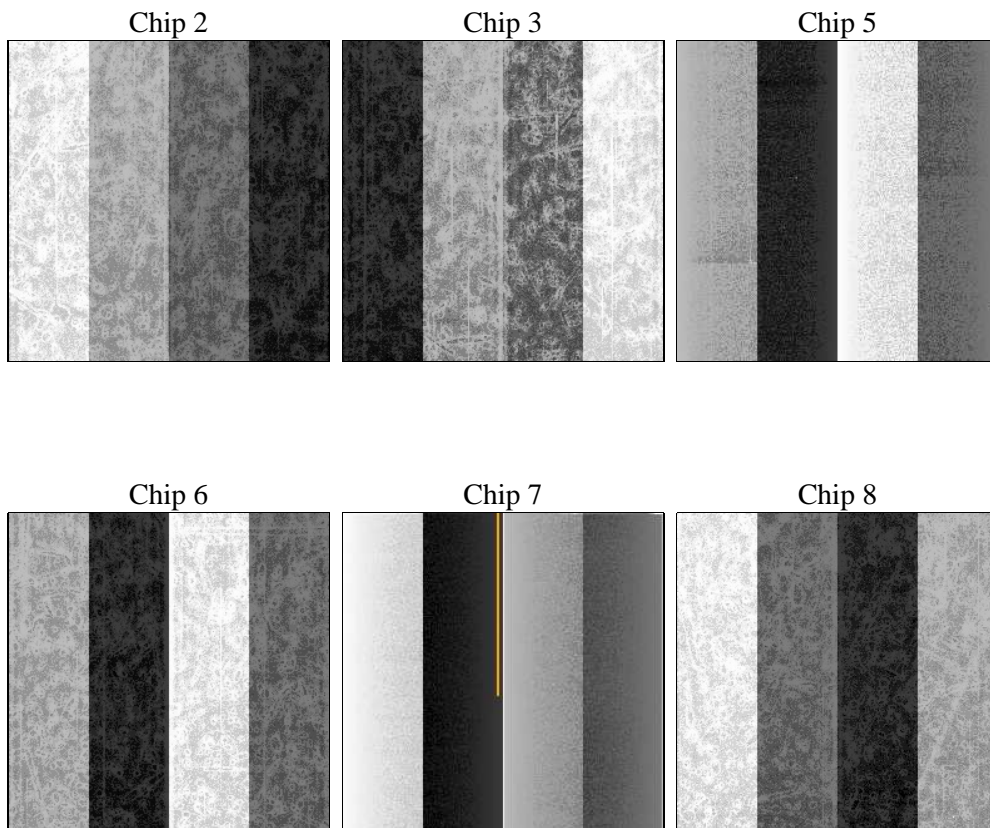
2 OBI

2.1 OBI

2.1.1 Images



2.1.2 Bias



2.1.3 Parameters

obi_num	0	Obi number	sched_exp_time	35000.641000	[s] Scheduled observation exposure time
ascdsver	8.4.5	Processing system revision	ontime	35139.199869156	Sum of GTIs [s]
caldbver	4.4.10	 	ontime2	35135.95883882	Sum of GTIs [s]
date	2012-06-26T00:40:59	Date and time of file creation	ontime3	35132.717838585	Sum of GTIs [s]
revision	2	Processing version of data	ontime5	35139.199869156	Sum of GTIs [s]
			ontime6	35135.958848774	Sum of GTIs [s]
			ontime7	35139.199869156	Sum of GTIs [s]
			ontime8	35135.958848774	Sum of GTIs [s]
			l1events	1719713	Number of level 1 events

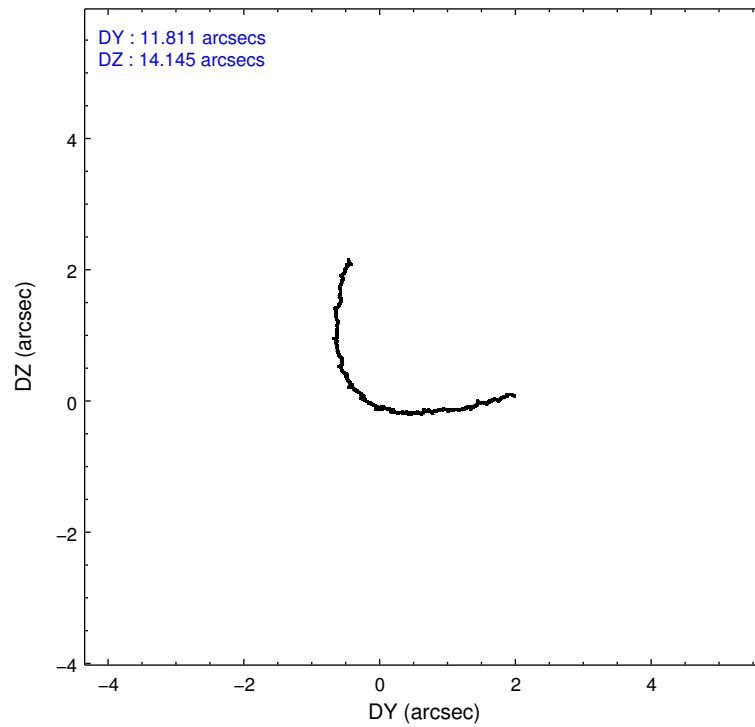
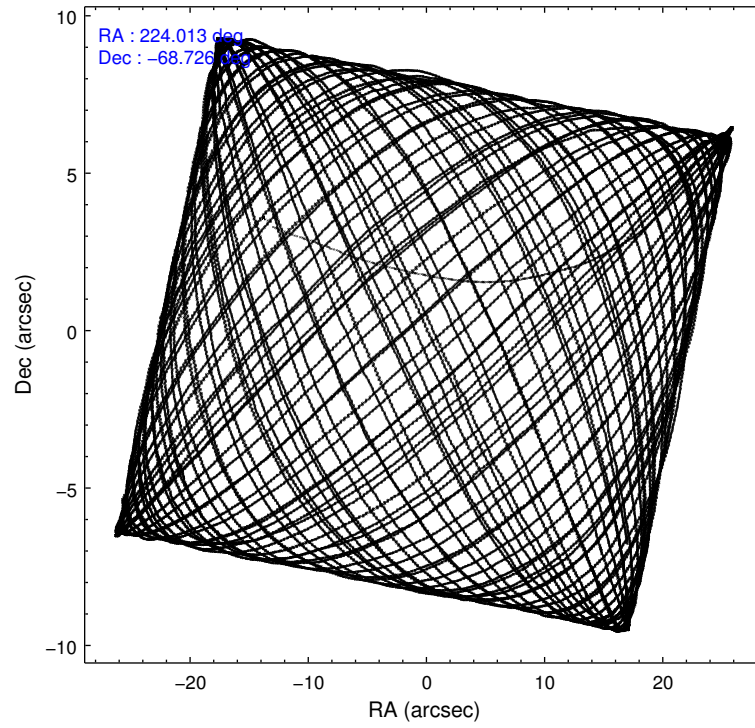
2.1.4 Events

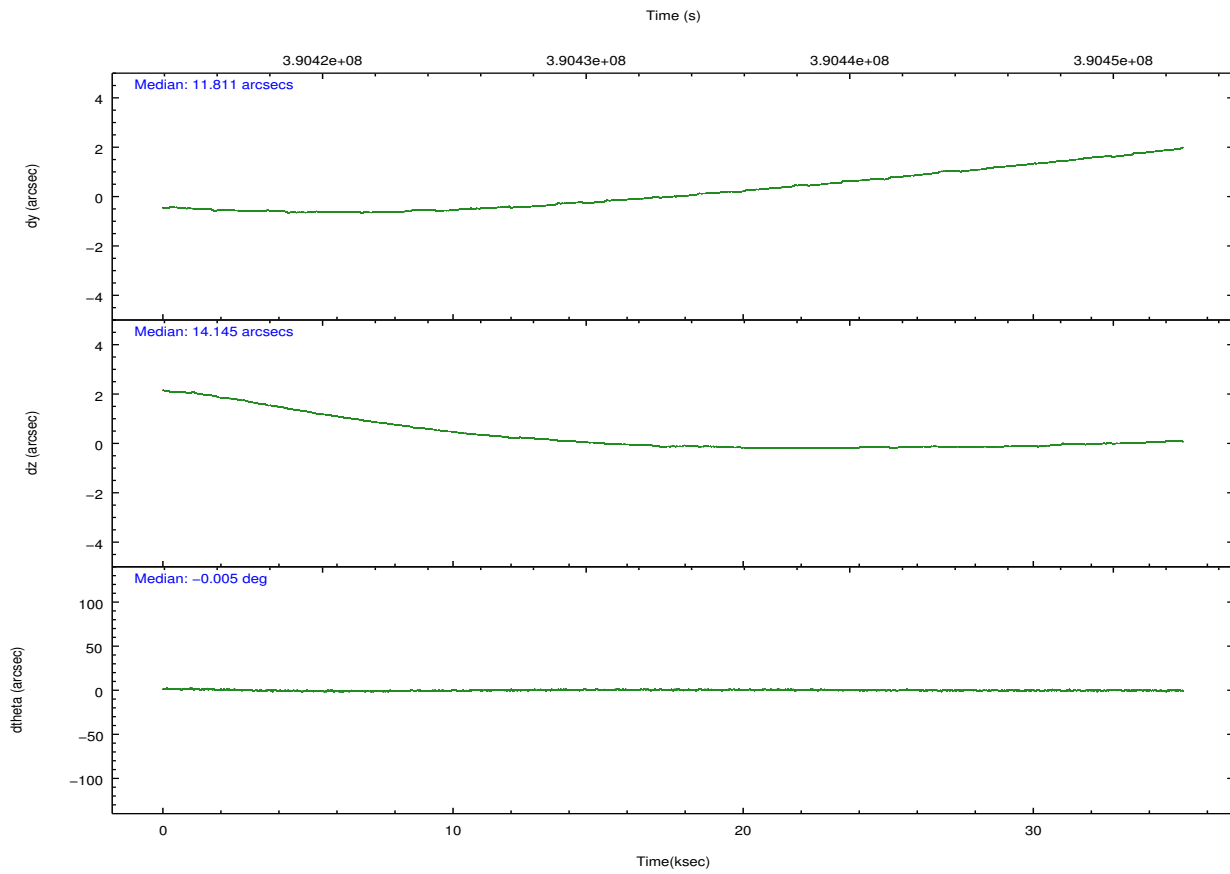
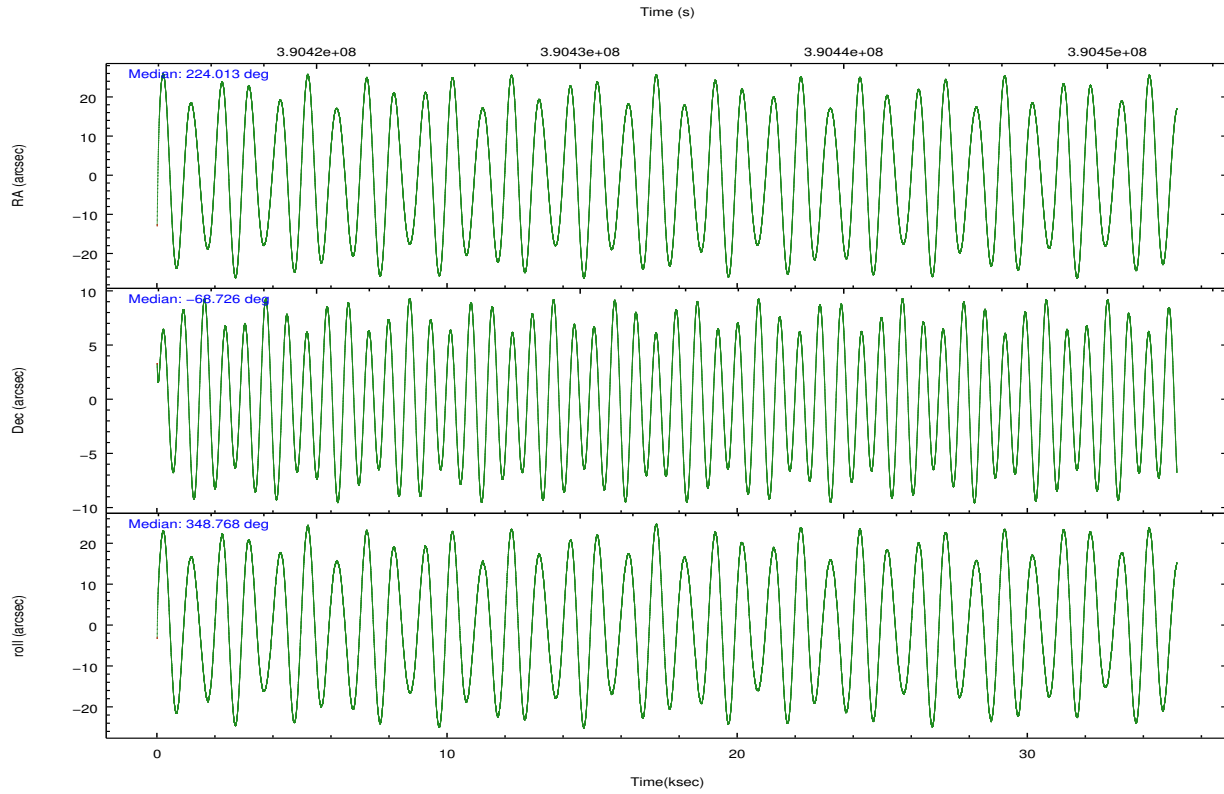
	ccd 2	ccd 3	ccd 5	ccd 6	ccd 7	ccd 8		ccd 2	ccd 3	ccd 5	ccd 6	ccd 7	ccd 8
level 1 events	267553	249364	360282	257401	264218	320895	grade 0 events	10082	9361	25097	10310	13154	24701
rejected events	241029	224217	168651	229665	135735	234118		3%	3%	6%	4%	4%	7%
rejected %	90%	89%	46%	89%	51%	72%	grade 1 events	165	150	717	137	396	285
								0%	0%	0%	0%	0%	0%
							grade 2 events	6480	5645	59570	6162	27679	21249
								2%	2%	16%	2%	10%	6%
							grade 3 events	2783	2868	7798	2887	11757	9237
								1%	1%	2%	1%	4%	2%
							grade 4 events	2701	2701	7324	2804	11808	8570
								1%	1%	2%	1%	4%	2%
							grade 5 events	8135	9435	27596	9586	27973	14685
								3%	3%	7%	3%	10%	4%
							grade 6 events	4611	4707	92839	5730	64777	23602
								1%	1%	25%	2%	24%	7%
							grade 7 events	232596	214497	139341	219785	106674	218566
								86%	86%	38%	85%	40%	68%

2.2 Compared Parameters

Parameter	Planned	Actual	Parameter	Planned	Actual
Instrument	ACIS	ACIS	Obspar format version number	7	7
Detector	ACIS-235678	ACIS-235678	Obspar file type	PREDICTED	ACTUAL
Grating	NONE	NONE	Obspar update status	NONE	UPDATED
Data mode	VFAINT	VFAINT	CCD I0 on	N	N
Observation mode	POINTING	POINTING	CCD I1 on	N	N
[deg] Pointing RA	223.942322	224.0133710145127	CCD I2 on	O1	Y
[deg] Pointing Dec	-68.734957	-68.72579332467839	CCD I3 on	Y	Y
[deg] Pointing Roll	348.550054	348.7728933115532	CCD S0 on	N	N
[mm] SIM focus pos	-0.684267	-0.6828225247311905	CCD S1 on	O2	Y
[mm] SIM defocus	0	0.001444936568705701	CCD S2 on	Y	Y
[mm] SIM translation stage pos	-190.132523	-190.1425803651734	CCD S3 on	Y	Y
[mm] SIM translation stage offset	0	0.01005778216563158	CCD S4 on	Y	Y
[s] Observation start time (MET)	390415868.184000	390414726.98149	CCD S5 on	N	N
Observation start date	2010-05-16T16:50:02	2010-05-16T16:32:06	Number of optional ACIS chips dropped	0	0
[s] Observation end time (MET)	390450868.184000	390451092.44585	On-chip summing requested	N	N
Observation end date	2010-05-17T02:33:22	2010-05-17T02:38:12	Subarray requested	NONE	NONE
Read mode	TIMED	TIMED	Alternating exposures requested	N	N
			[s] Primary exposure time	0.000000	3.2

2.3 Aspect





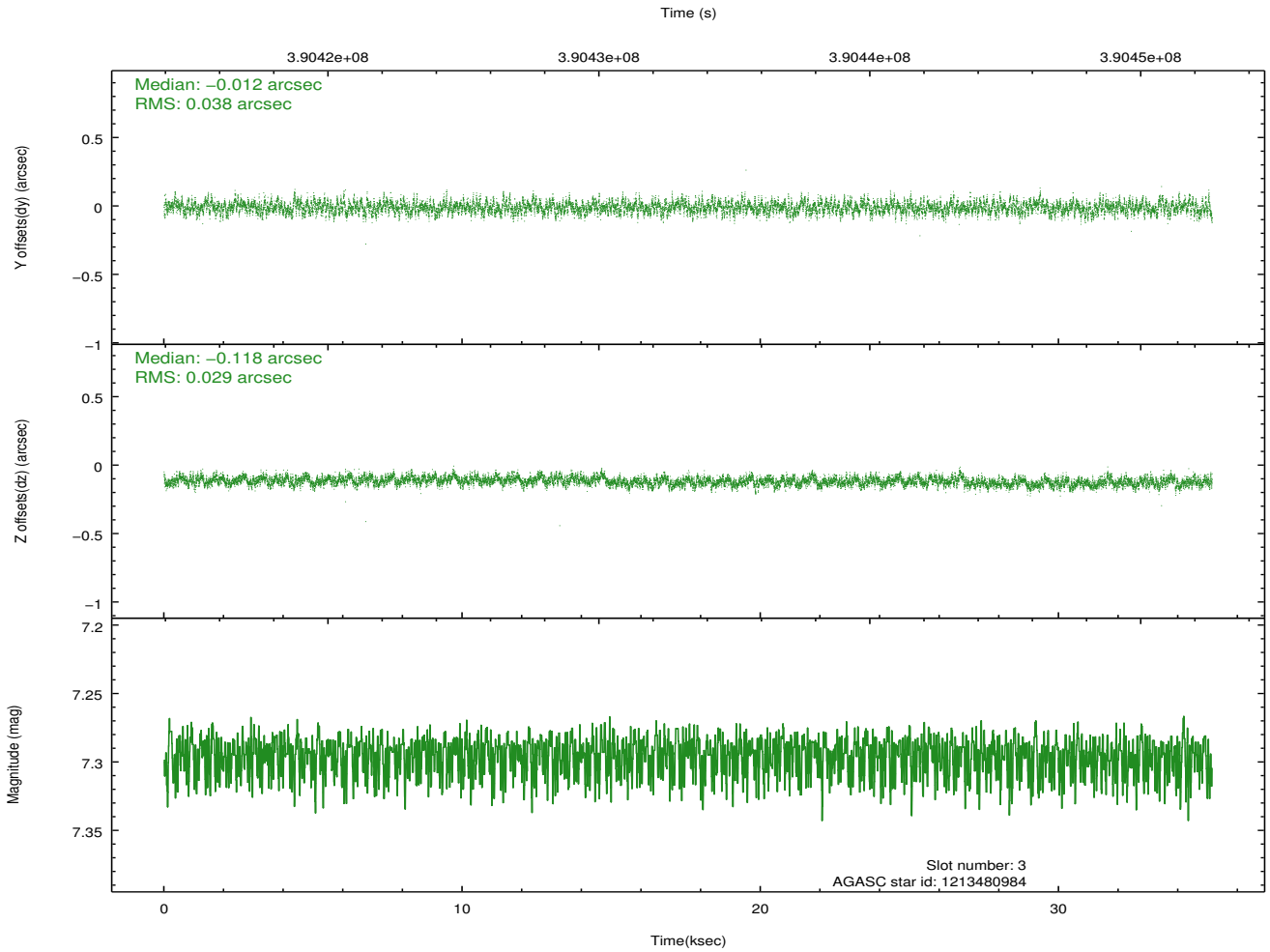
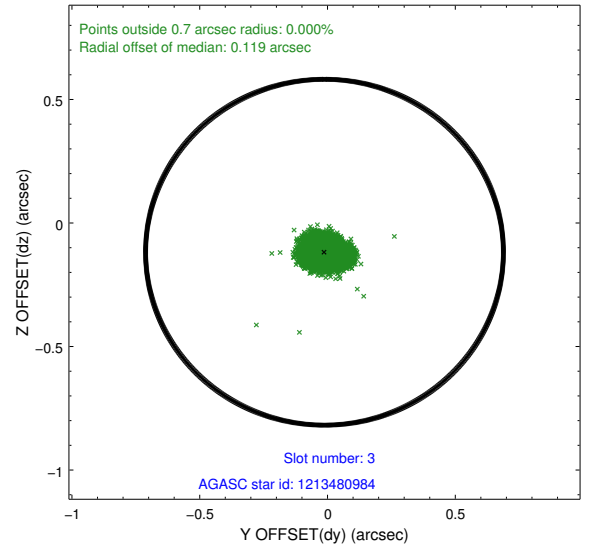
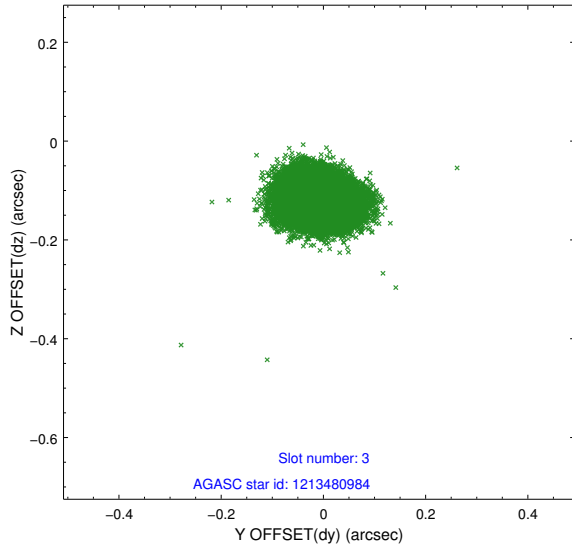
Slot Statistics

slot	status	id	mag	n_pts	med_dy	med_dz	dr1	dr2	ra	dec	mean_y	mean_z
0	FID	ACIS-S-1	6.98	8572	0.044	0.001	0.019	0.071	0.000000	0.000000	931.13	-1731.44
1	FID	ACIS-S-4	6.98	8573	0.089	-0.020	0.027	0.054	0.000000	0.000000	2148.60	172.67
2	FID	ACIS-S-5	7.02	8573	-0.153	0.029	0.019	0.043	0.000000	0.000000	-1817.89	166.35
3	GUIDE	1213480984	7.29	17141	-0.012	-0.118	0.051	0.082	223.352756	-68.391617	-1010.70	1052.17
4	GUIDE	1213486024	7.78	17144	-0.124	0.079	0.068	0.109	225.304529	-69.218650	2054.92	-1380.07
5	GUIDE	1213487088	8.63	17135	0.215	0.182	0.063	0.101	222.010202	-69.080750	-2178.02	-1751.30
6	GUIDE	1213487192	7.88	17142	-0.080	-0.064	0.057	0.094	224.973733	-69.206014	1631.06	-1411.20
7	GUIDE	1213488896	8.19	17134	0.004	-0.075	0.062	0.100	222.759971	-68.475981	-1712.13	588.90

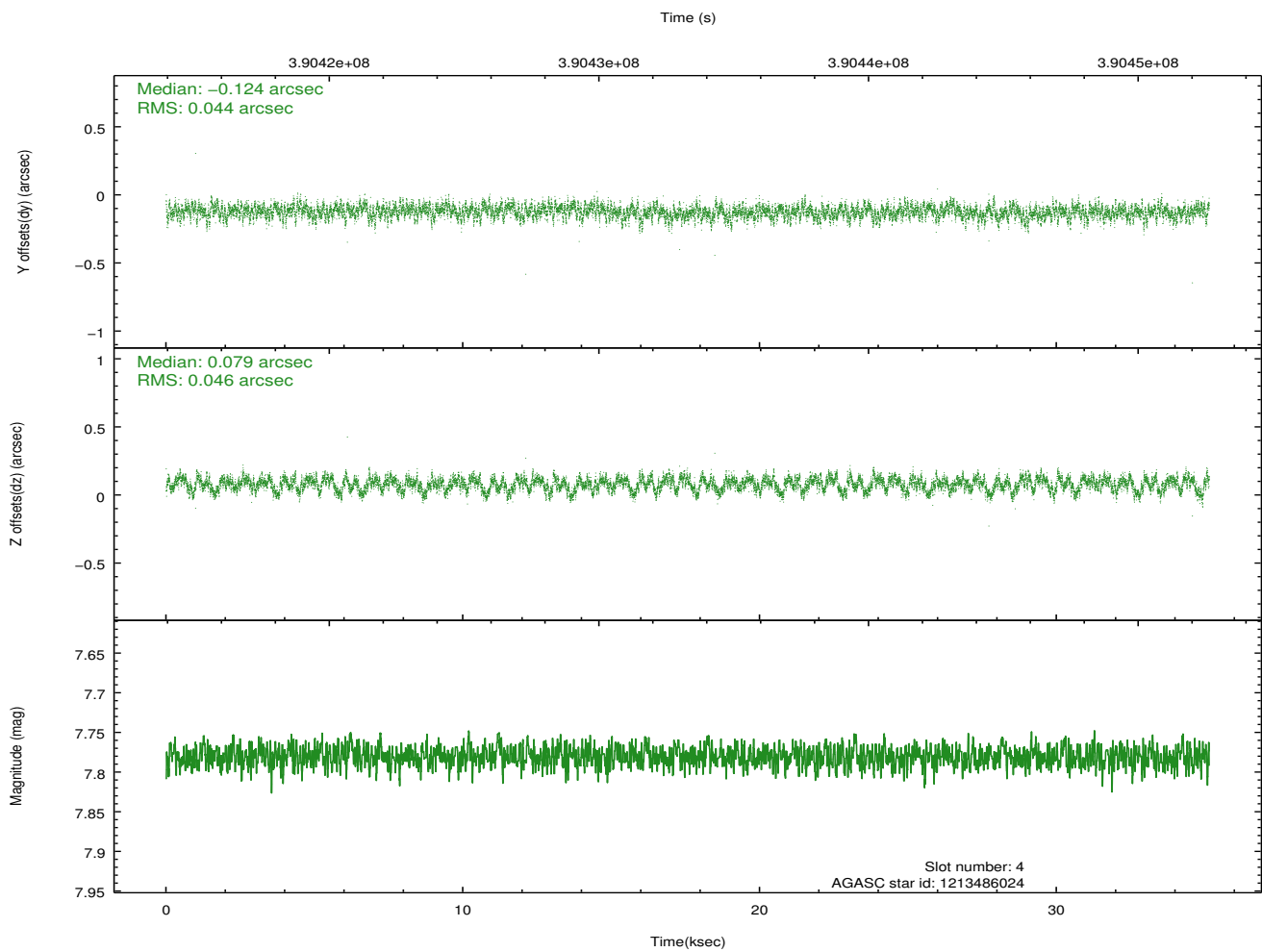
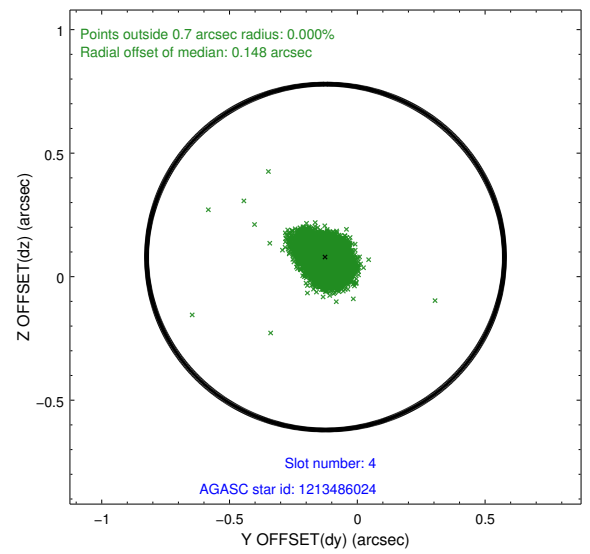
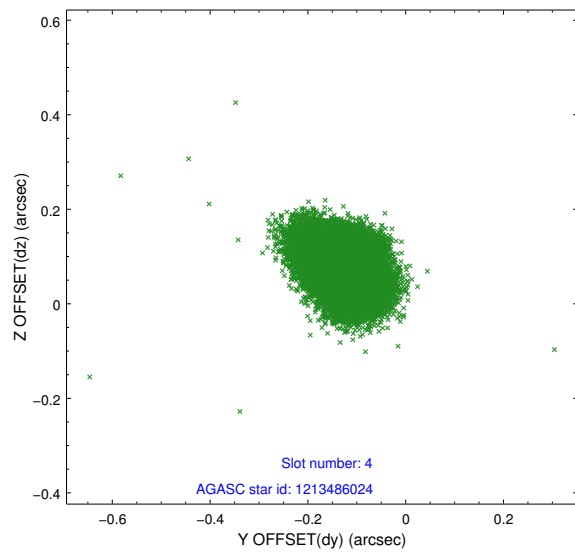
∞

2.4 Star Slots

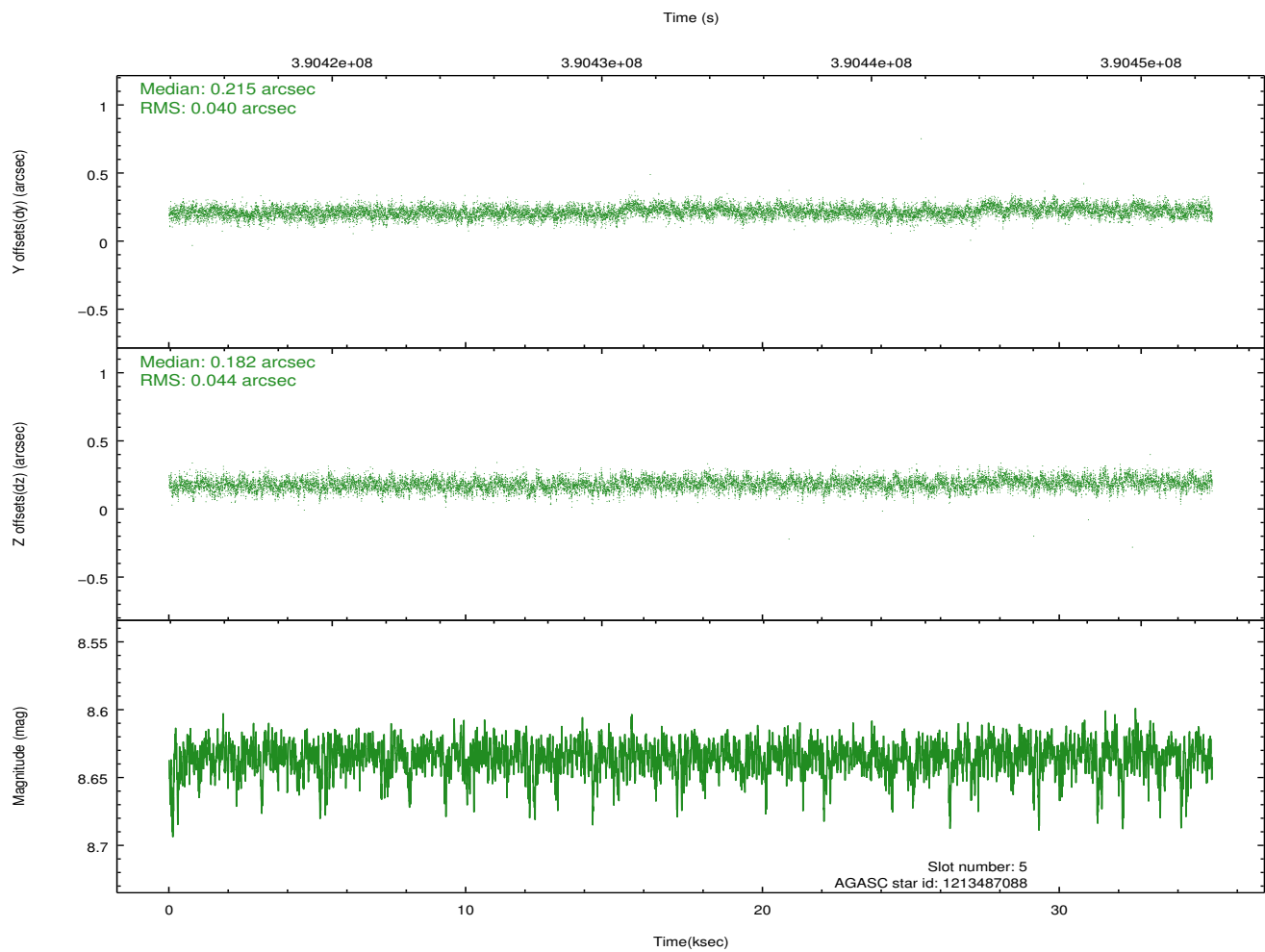
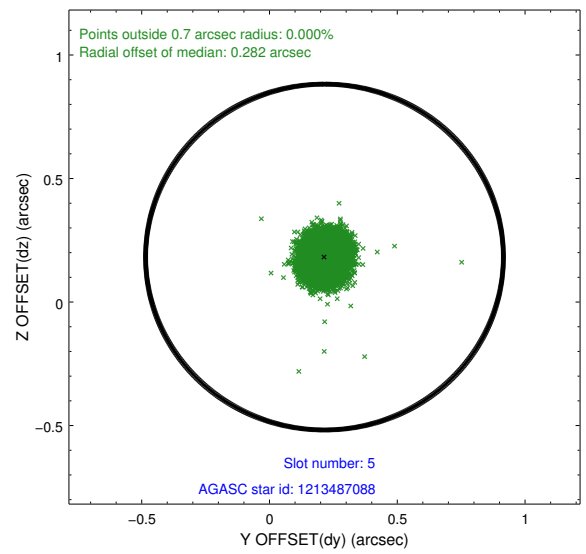
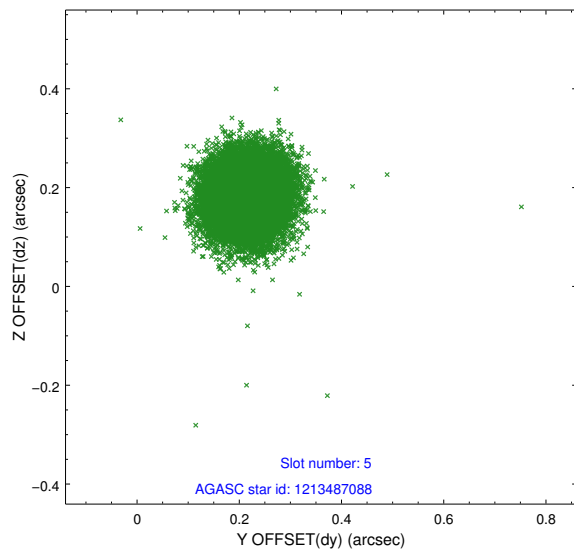
2.4.1 Slot 3



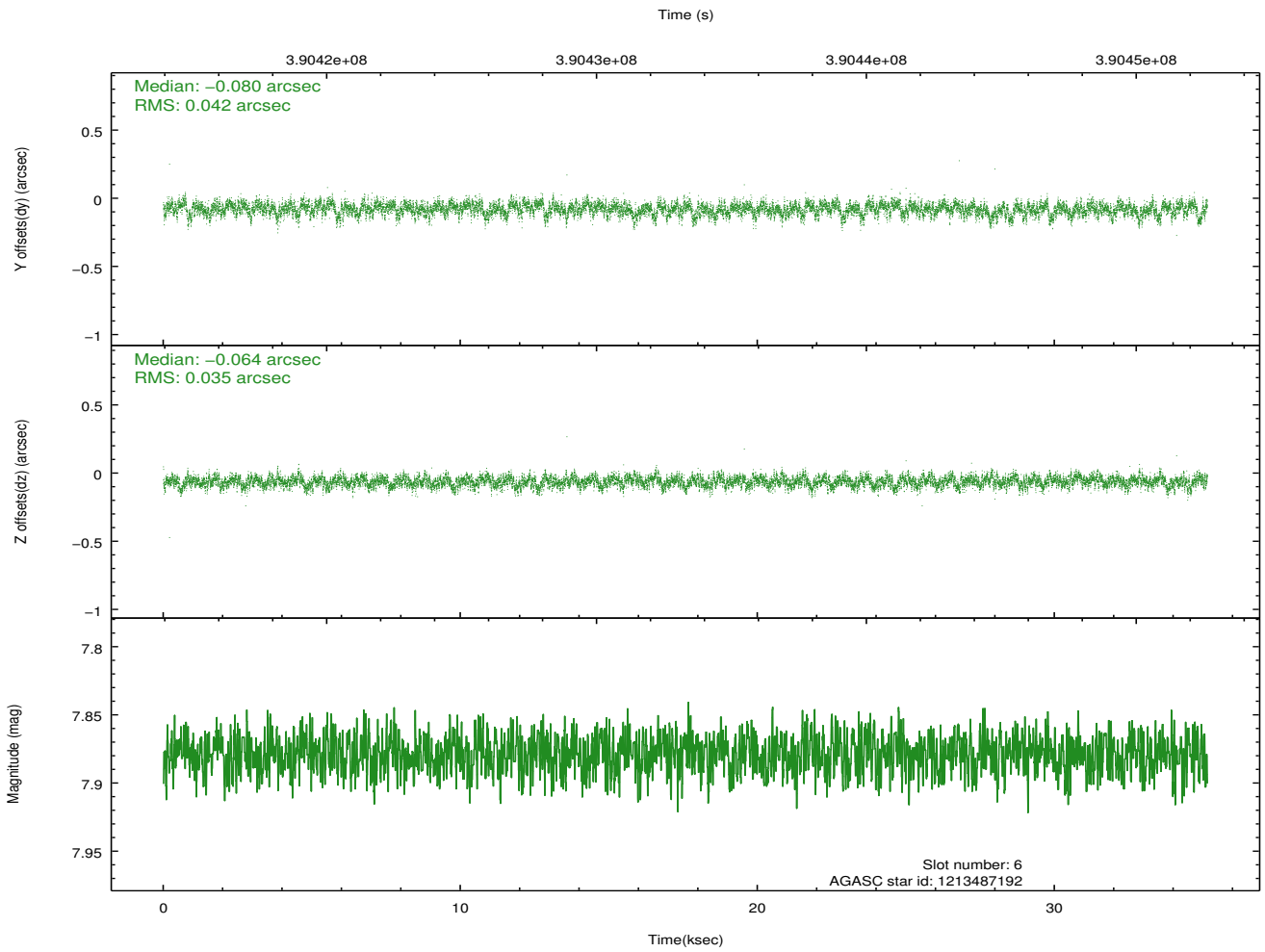
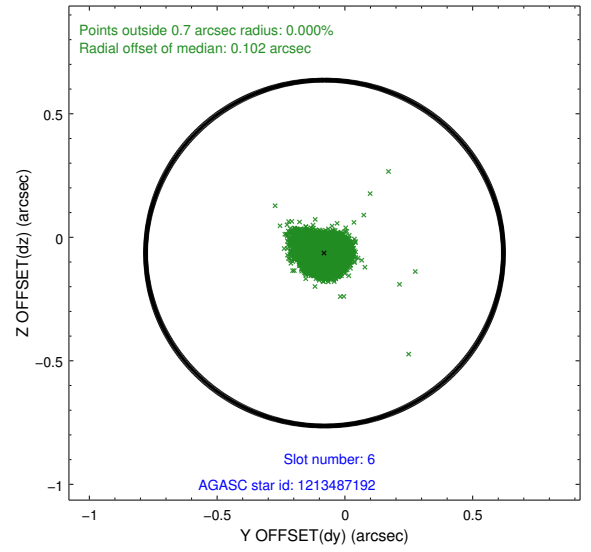
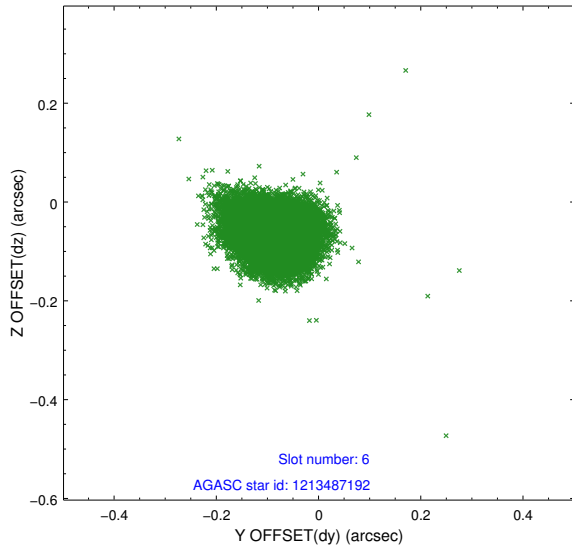
2.4.2 Slot 4



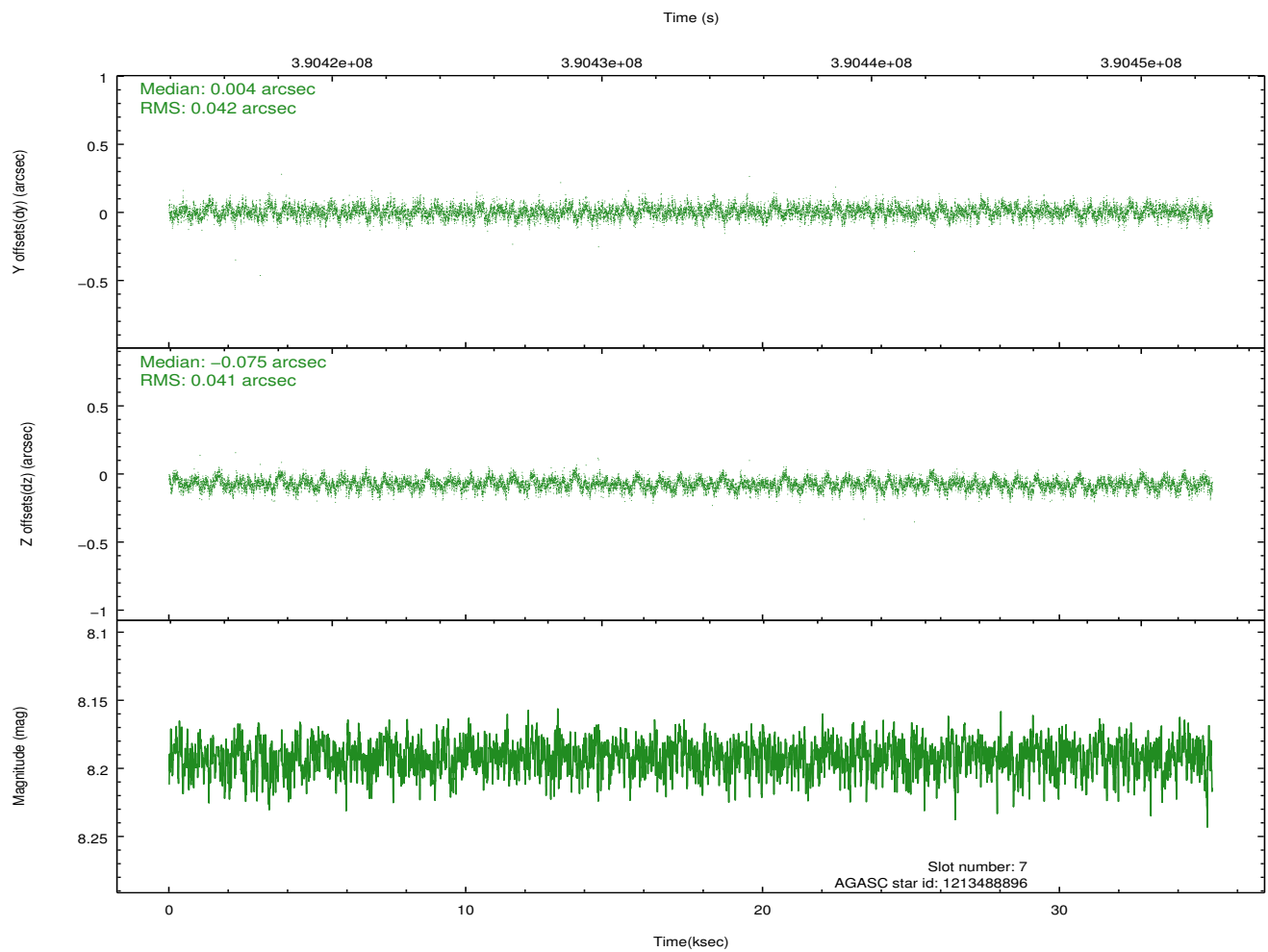
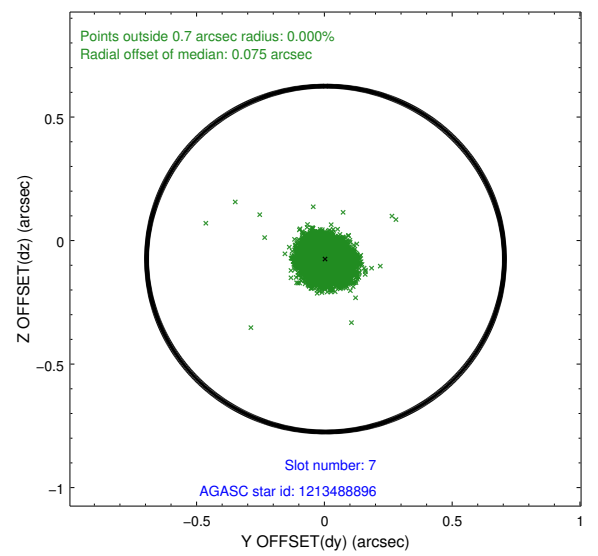
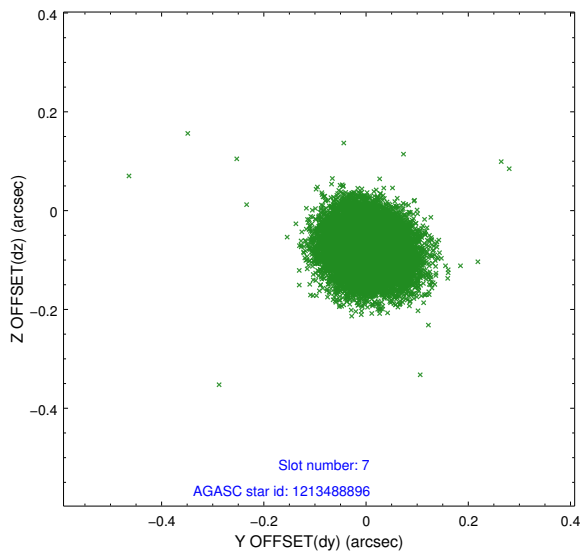
2.4.3 Slot 5



2.4.4 Slot 6

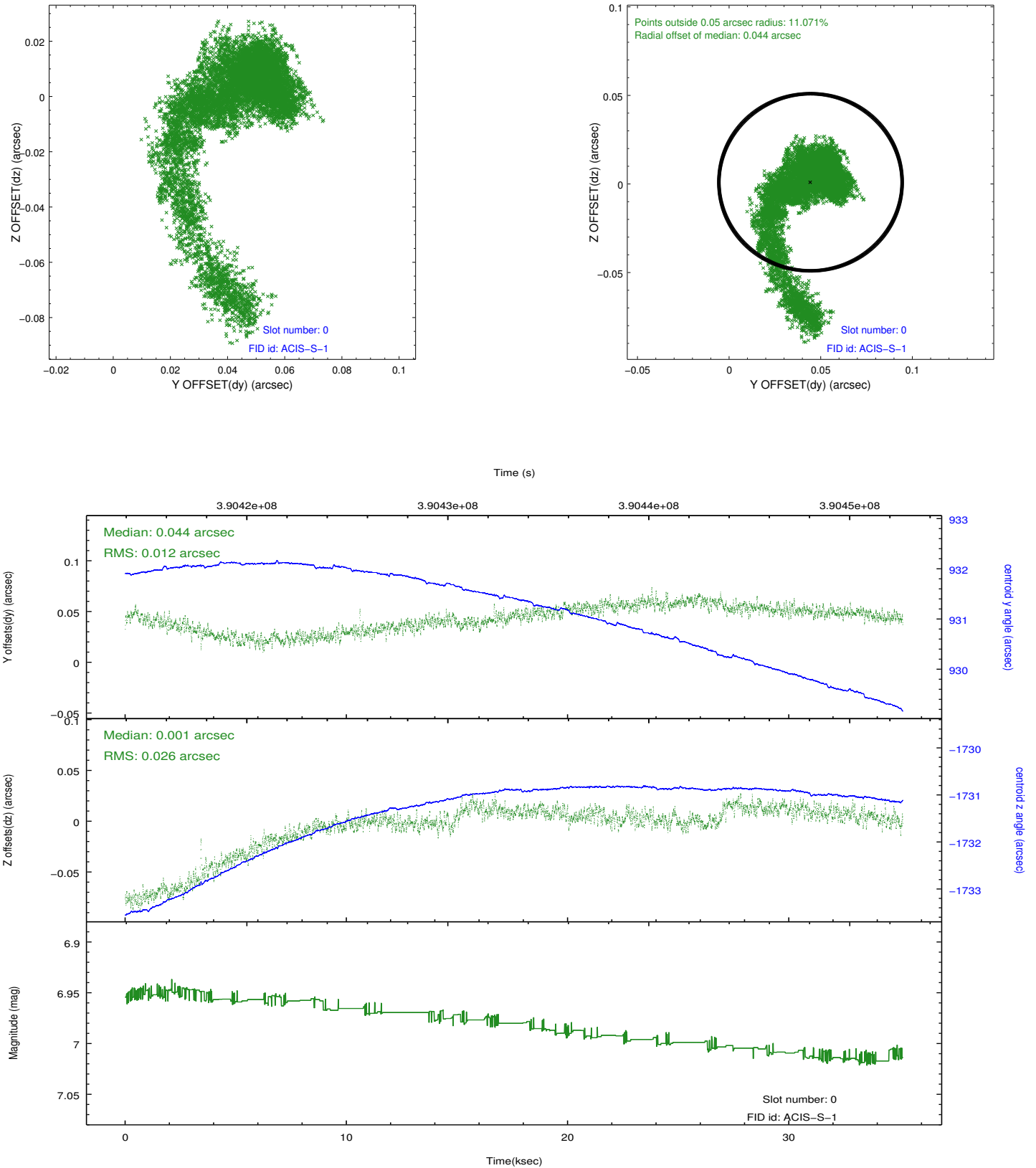


2.4.5 Slot 7

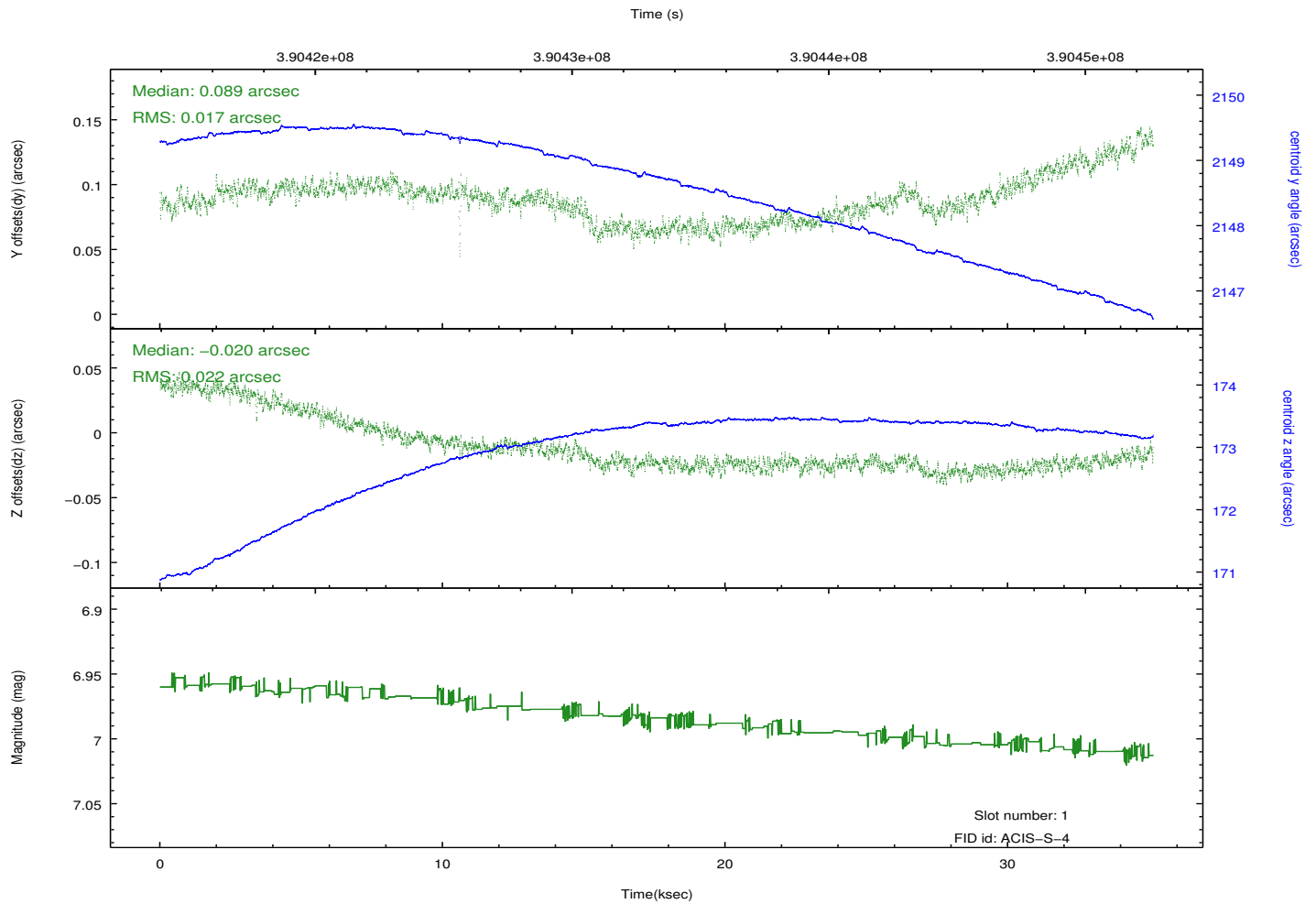
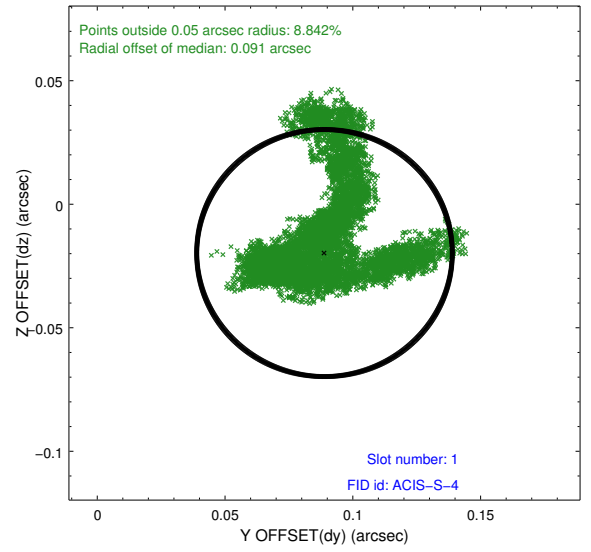
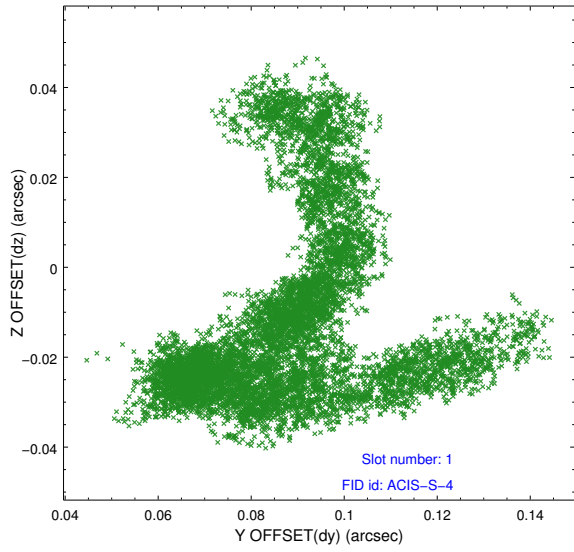


2.5 FID Slots

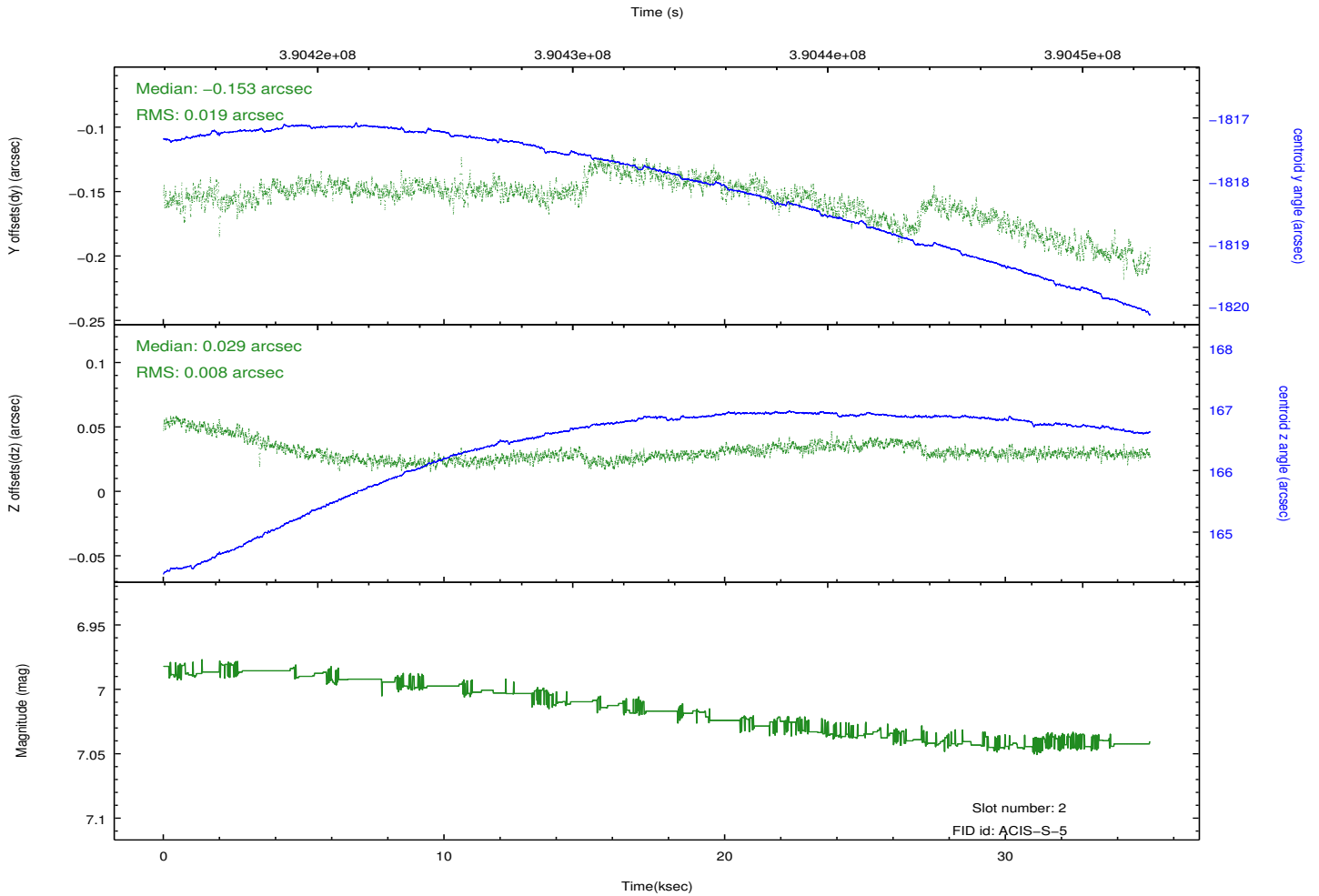
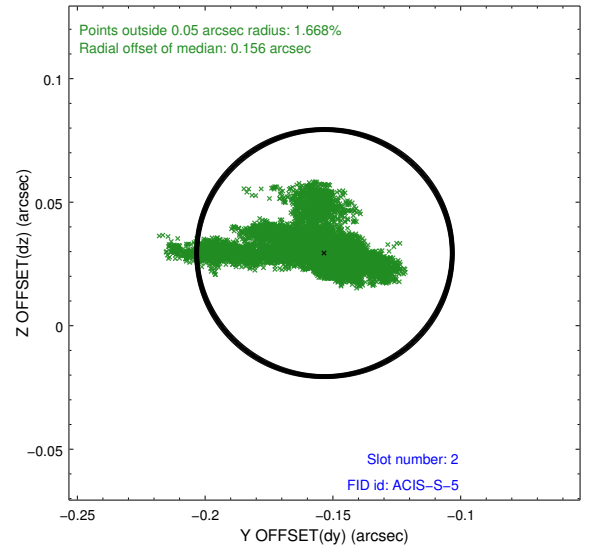
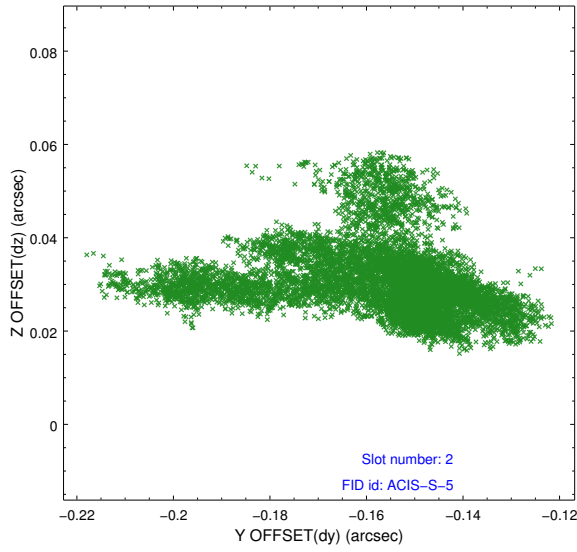
2.5.1 Slot 0



2.5.2 Slot 1



2.5.3 Slot 2



A Summary

A.1 Status

V&V Scientist	Beth Sundheim
V&V Date (YYYY-MM-DD)	2012.07.03
V&V Edition	1
V&V Disposition and Status	OK
V&V Charge Time	35.139199869156

A.2 Comments