

V&V Reference Report

L2 ASCDS Version : 8.4.5

Observation 11932 - L2 Version 4
Chandra X-Ray Center

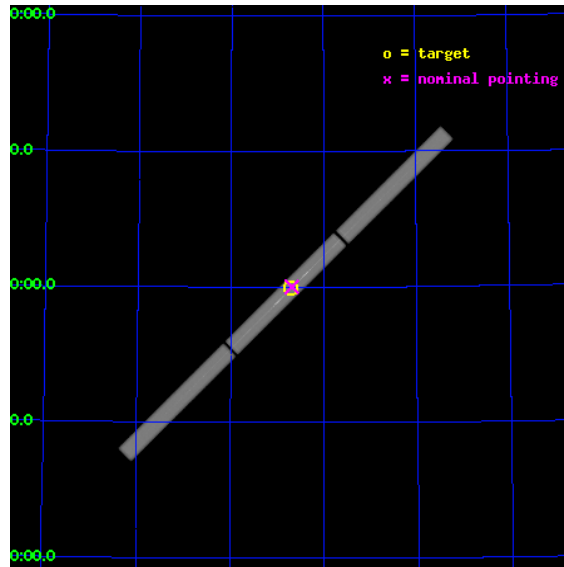
L2 Processing Date : Aug 13 2012

Contents

1	Front	2
2	OBI	3
2.1	OBI	3
2.1.1	Images	3
2.1.2	Parameters	4
2.1.3	Events	4
2.2	Compared Parameters	5
2.3	Aspect	6
2.4	Star Slots	9
2.4.1	Slot 3	9
2.4.2	Slot 4	10
2.4.3	Slot 5	11
2.4.4	Slot 6	12
2.4.5	Slot 7	13
2.5	FID Slots	14
2.5.1	Slot 0	14
2.5.2	Slot 1	15
2.5.3	Slot 2	16
3	Gratings	17
3.1	LETG Arm	17
A	Summary	19
A.1	Status	19
A.2	Comments	19

1 Front

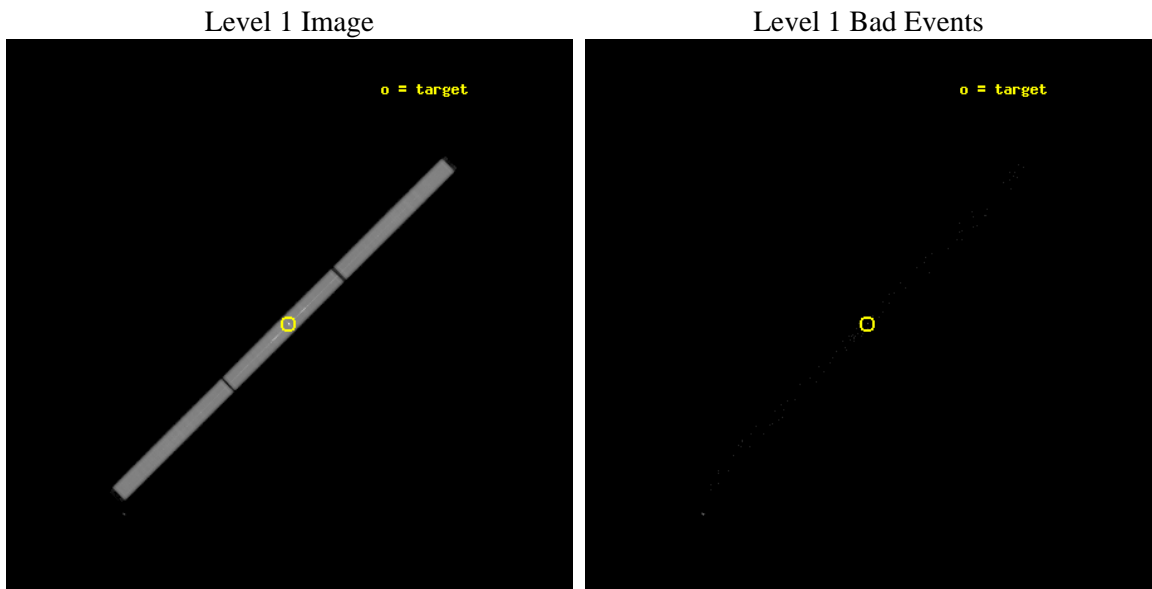
seq_num	290921	Sequence number
obs_id	11932	Observation id
title	AO-11 Calibration Observations of Capella	Proposal title
observer	Dr. CXC Calibration	Principal investigator
object	Capella	Source name
ra_targ	79.17625	Observer's specified target RA [deg]
dec_targ	45.997889	Observer's specified target Dec [deg]
ra_nom	79.171473057377	Nominal RA [deg]
dec_nom	46.00127825687	Nominal Dec [deg]
roll_nom	135.29894542907	Nominal Roll [deg]
revision	4	Processing version of data
ontime	30636.48279506	[s]
livetime	30284.039471128	Overtime multiplied by DTCOR
l2events	3084243	Number of level 2 events



2 OBI

2.1 OBI

2.1.1 Images



2.1.2 Parameters

obi_num	1	Obi number	sched_exp_time	30454.000000	[s] Scheduled observation exposure time
ascdsver	8.4.5	Processing system revision	ontime	30636.48279506	[s]
caldsver	4.5.1.1	 	l1events	4035704	Number of level 1 events
date	2012-08-13T18:13:18	Date and time of file creation			
revision	4	Processing version of data			

2.1.3 Events

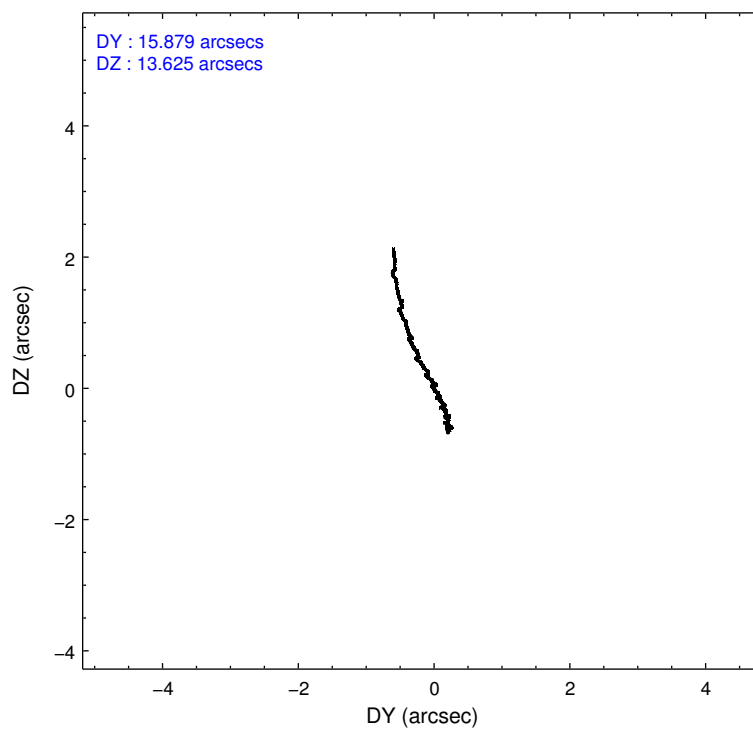
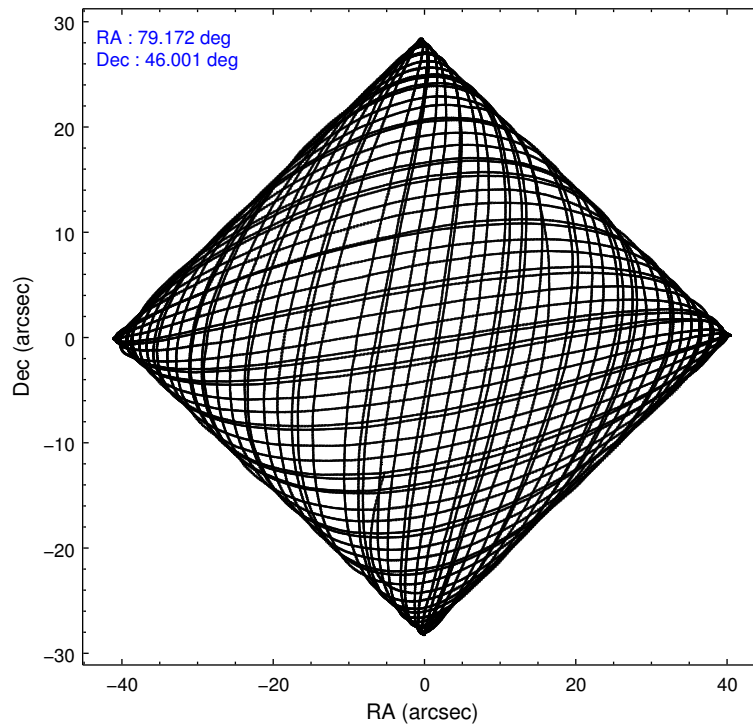
Level 1 Events

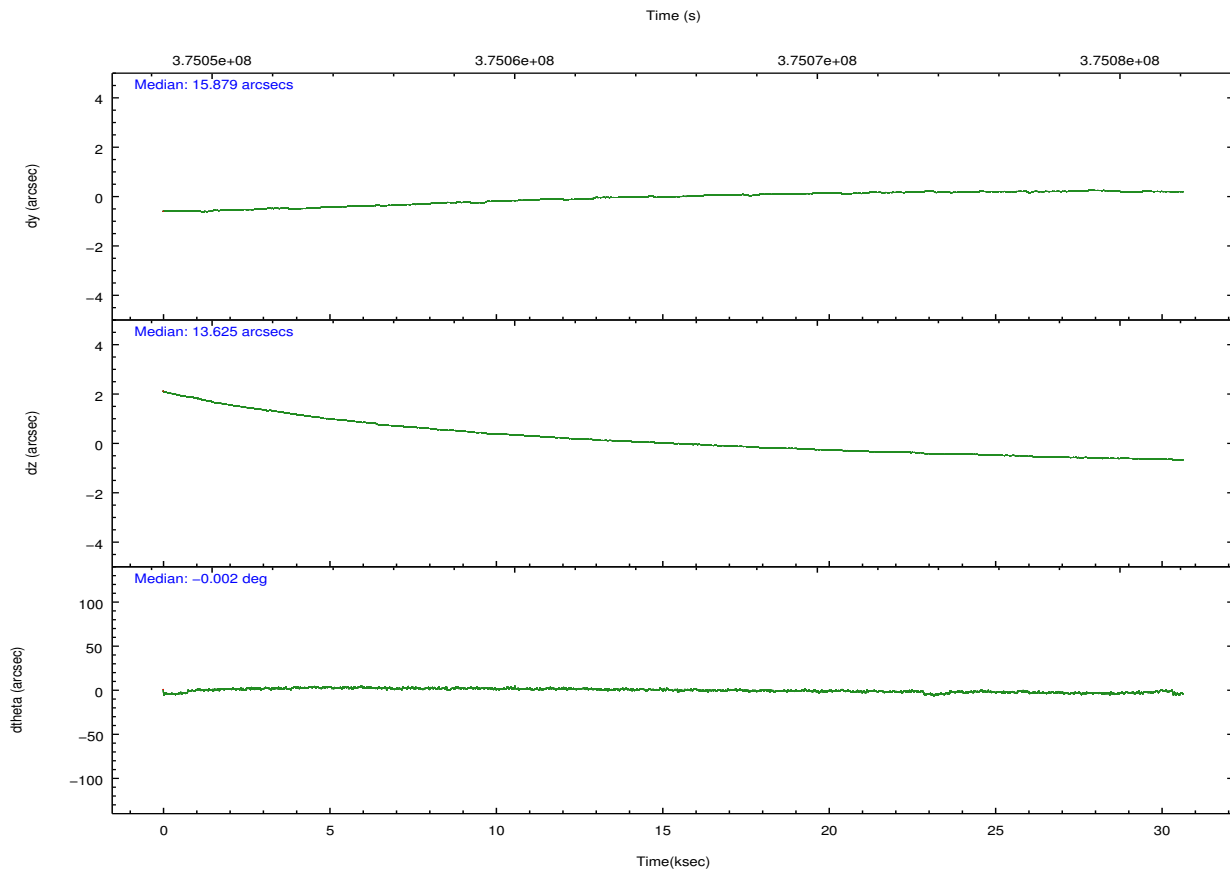
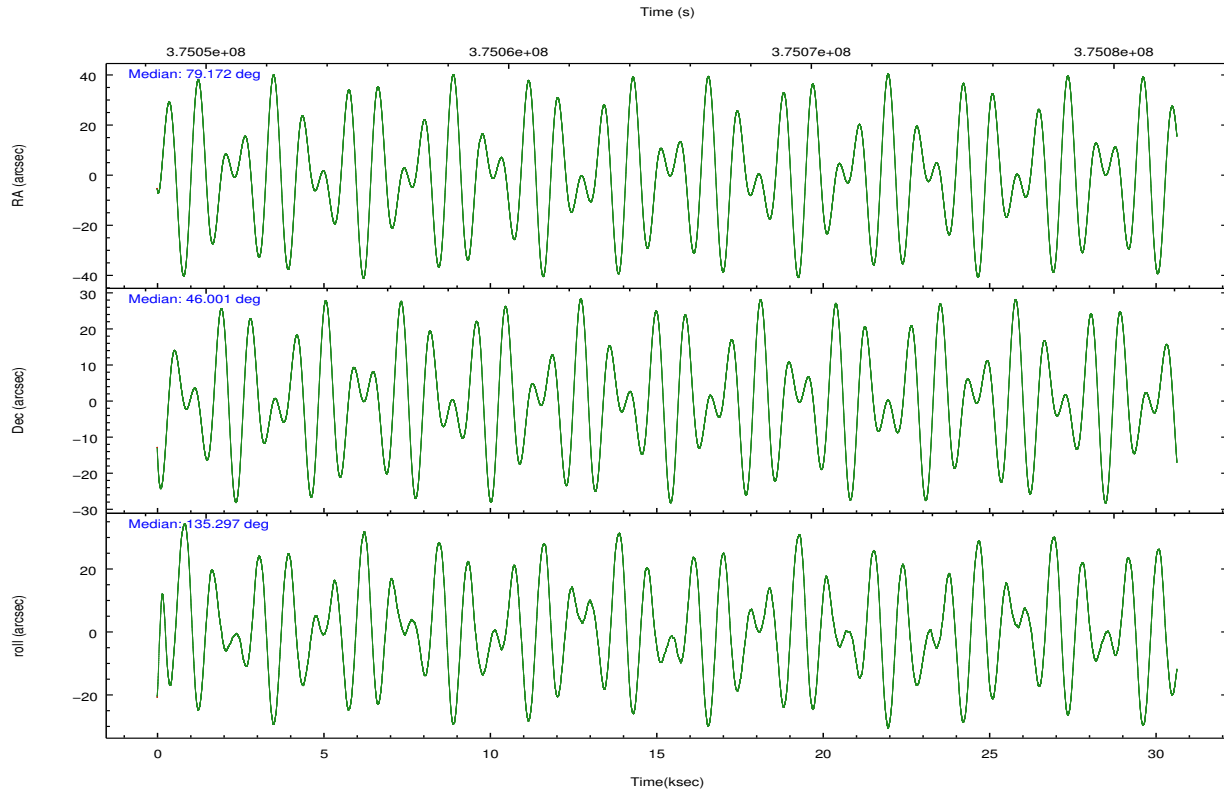
	segment 1	segment 2	segment 3
level 1 events	1288840	1448696	1298168
rejected events	39902	40989	40080
rejected %	3%	2%	3%

2.2 Compared Parameters

Parameter	Planned	Actual	Parameter	Planned	Actual
Instrument	HRC	HRC	Obspar format version number	7	7
Detector	HRC-S	HRC-S	Obspar file type	PREDICTED	ACTUAL
Grating	LETG	LETG	Obspar update status	NONE	UPDATED
Data mode	OBSERVING	OBSERVING			
Observation mode	POINTING	POINTING			
[deg] Pointing RA	79.211891	79.1714730573772			
[deg] Pointing Dec	45.995392	46.00127825686982			
[deg] Pointing Roll	135.202553	135.2989454290711			
[mm] SIM focus pos	-1.429586	-1.428180813131781			
[mm] SIM defocus	0.1037507710433287	0.1051558262725154			
[mm] SIM translation stage pos	250.455976	250.466033080201			
[mm] SIM translation stage offset	0	-0.01005468664627074			
[s] Observation start time (MET)	375050093.184000	375048958.89032			
Observation start date	2009-11-19T20:33:47	2009-11-19T20:15:58			
[s] Observation end time (MET)	375080547.184000	375081255.61695			
Observation end date	2009-11-20T05:01:21	2009-11-20T05:14:15			

2.3 Aspect



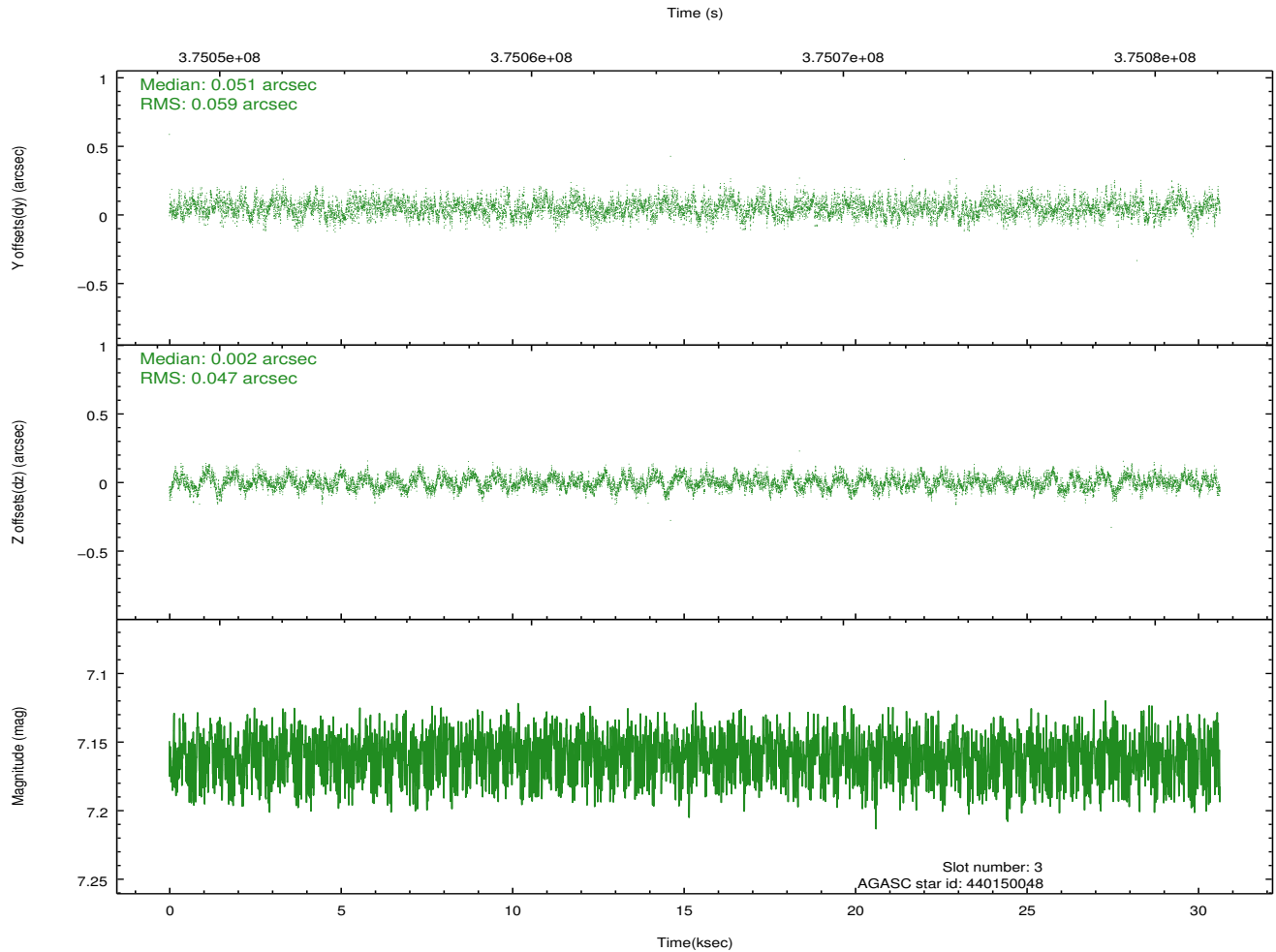
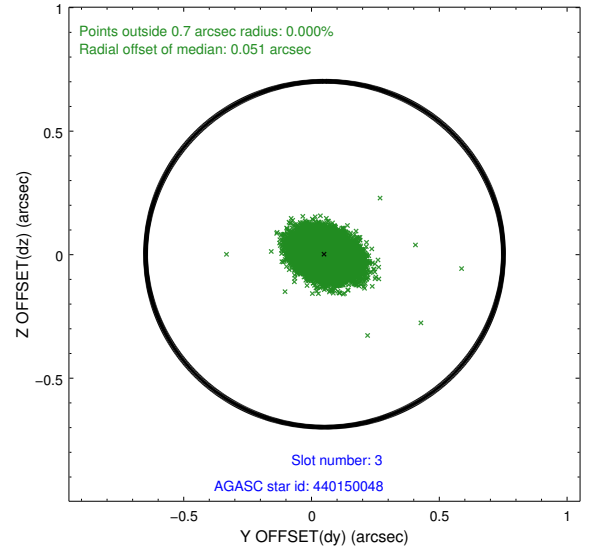
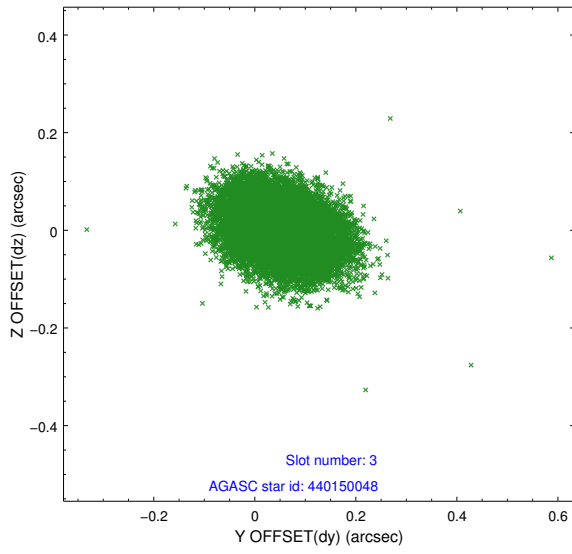


Slot Statistics

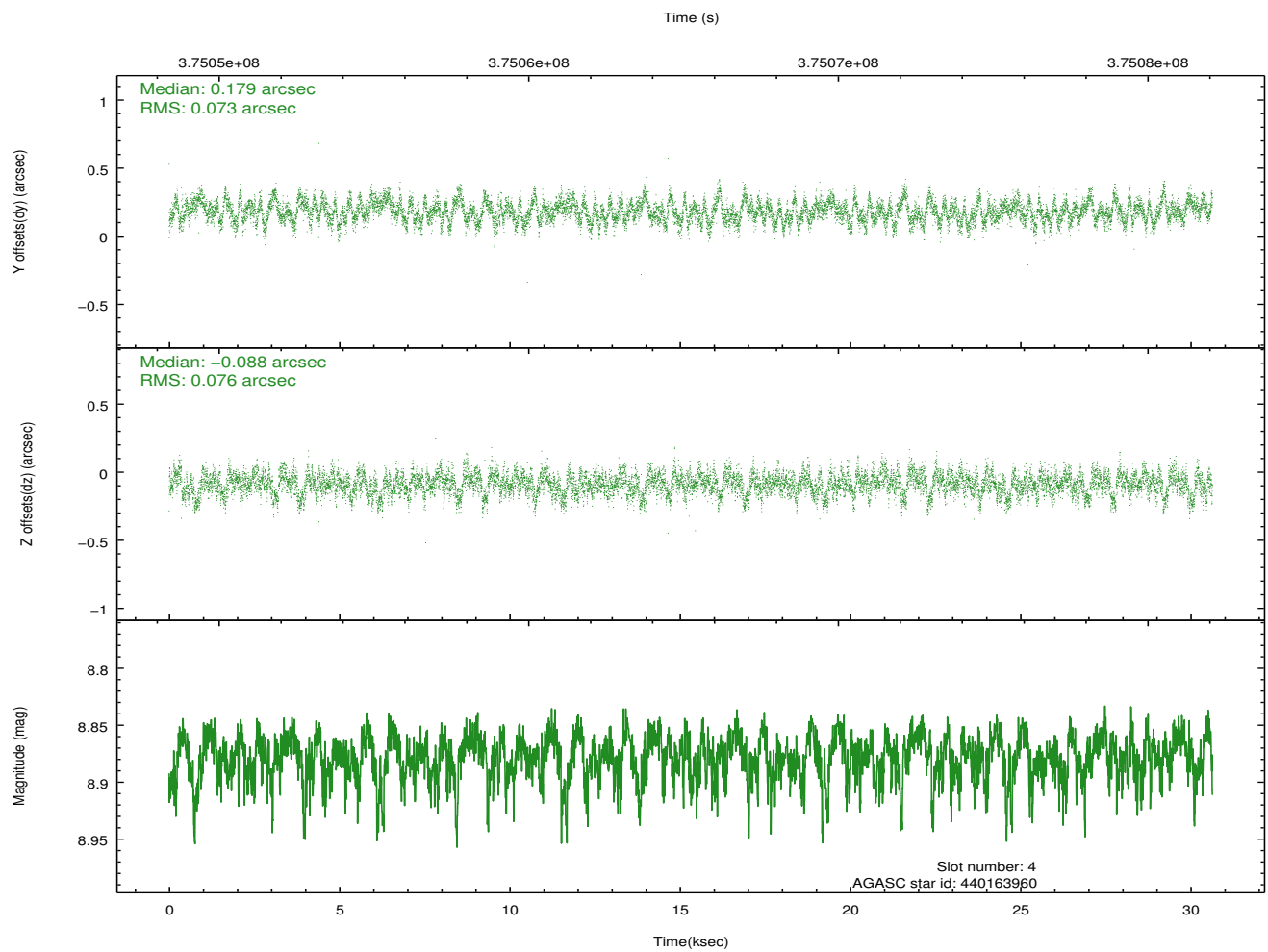
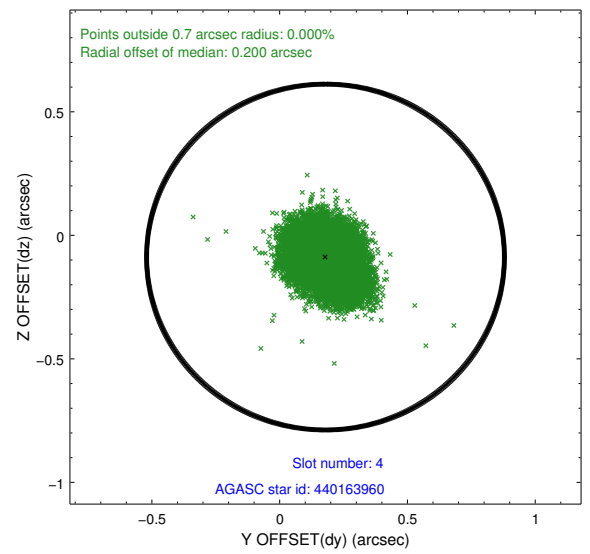
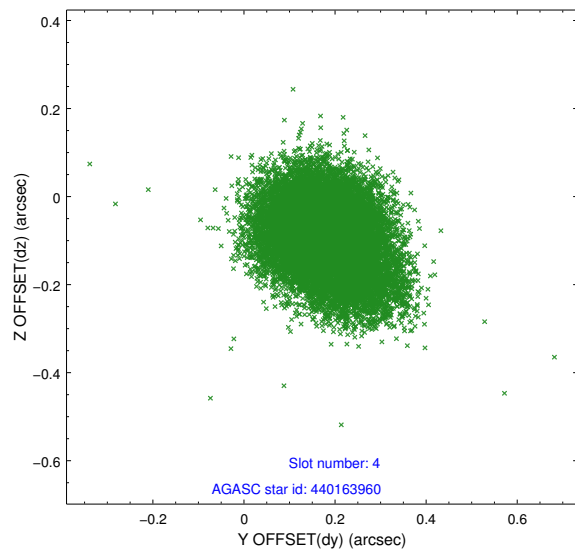
slot	status	id	mag	n_pts	med_dy	med_dz	dr1	dr2	ra	dec	mean_y	mean_z
0	FID	HRC-S-2	7.01	7473	0.216	-0.089	0.024	0.060	0.000000	0.000000	1229.57	-455.25
1	FID	HRC-S-3	7.04	7472	-0.014	-0.064	0.022	0.052	0.000000	0.000000	-1172.87	566.95
2	FID	HRC-S-4	6.98	7470	0.201	-0.143	0.030	0.074	0.000000	0.000000	1228.00	569.52
3	GUIDE	440150048	7.16	14942	0.051	0.002	0.081	0.130	79.112838	46.416060	1242.17	-901.30
4	GUIDE	440163960	8.88	14931	0.179	-0.088	0.112	0.182	79.298370	45.827072	-580.10	276.86
5	GUIDE	440164960	8.29	14932	0.139	0.060	0.099	0.161	79.132526	46.140947	509.87	-231.79
6	GUIDE	438441368	9.99	14889	-0.280	0.130	0.157	0.263	78.646413	46.420494	2077.86	-100.33
7	GUIDE	440140240	9.96	14921	-0.088	-0.095	0.184	0.333	78.889349	46.726437	2420.89	-1307.72

2.4 Star Slots

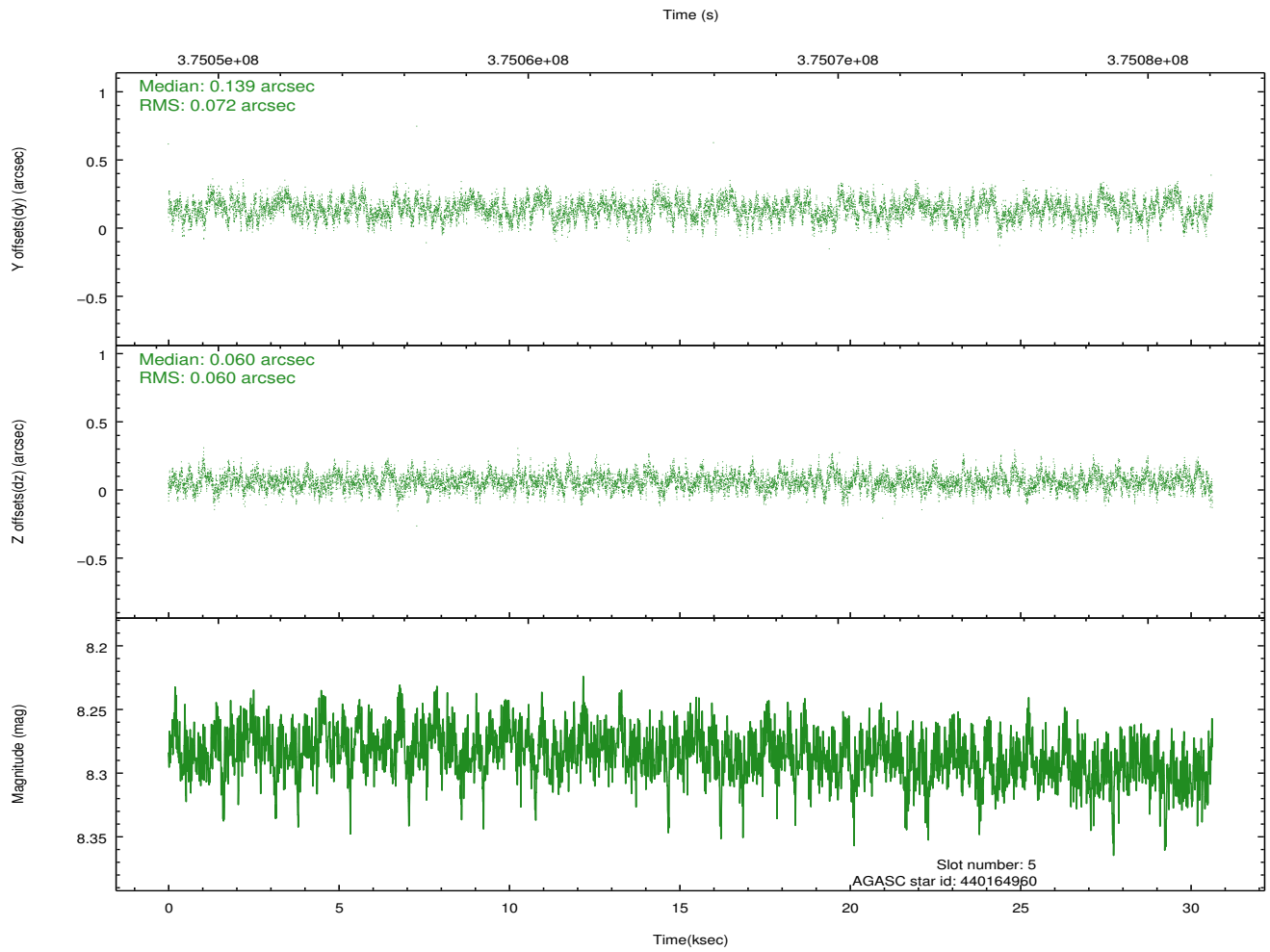
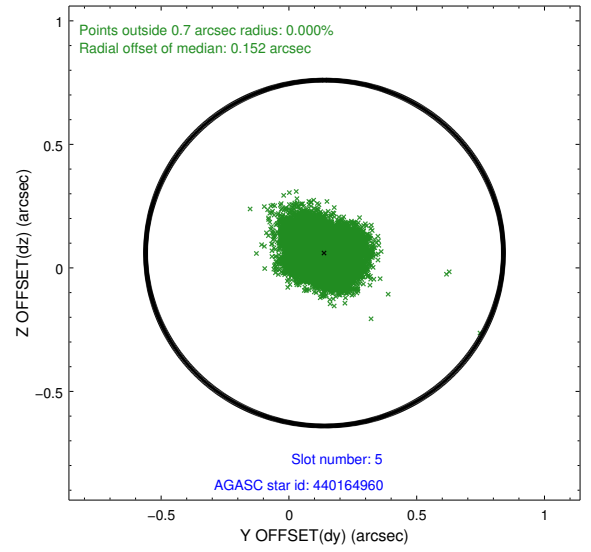
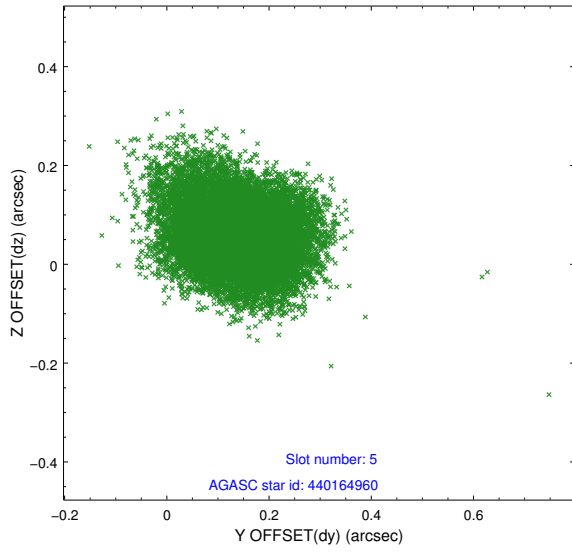
2.4.1 Slot 3



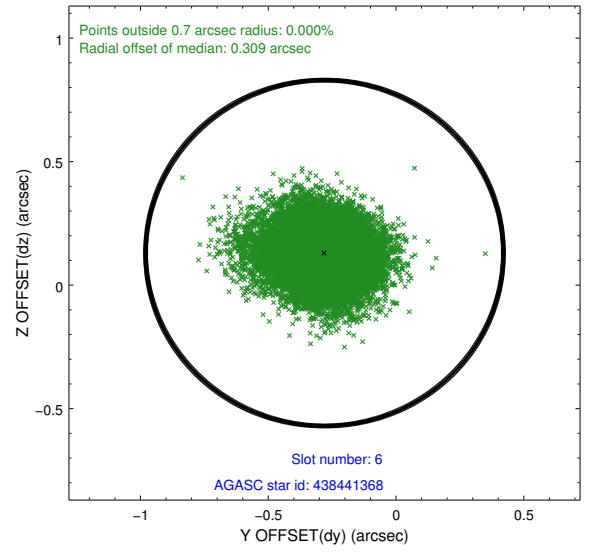
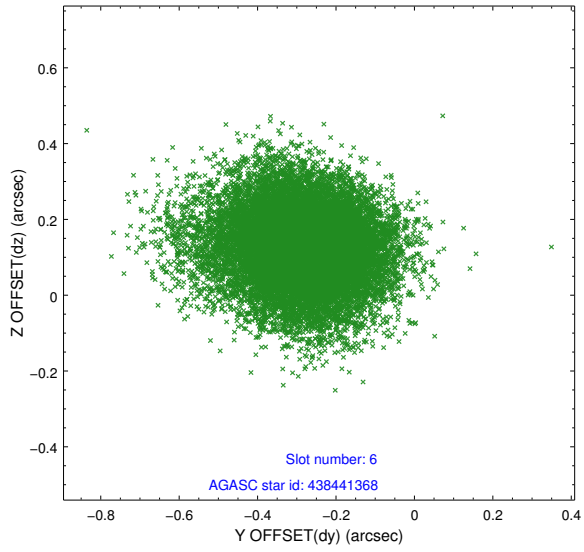
2.4.2 Slot 4



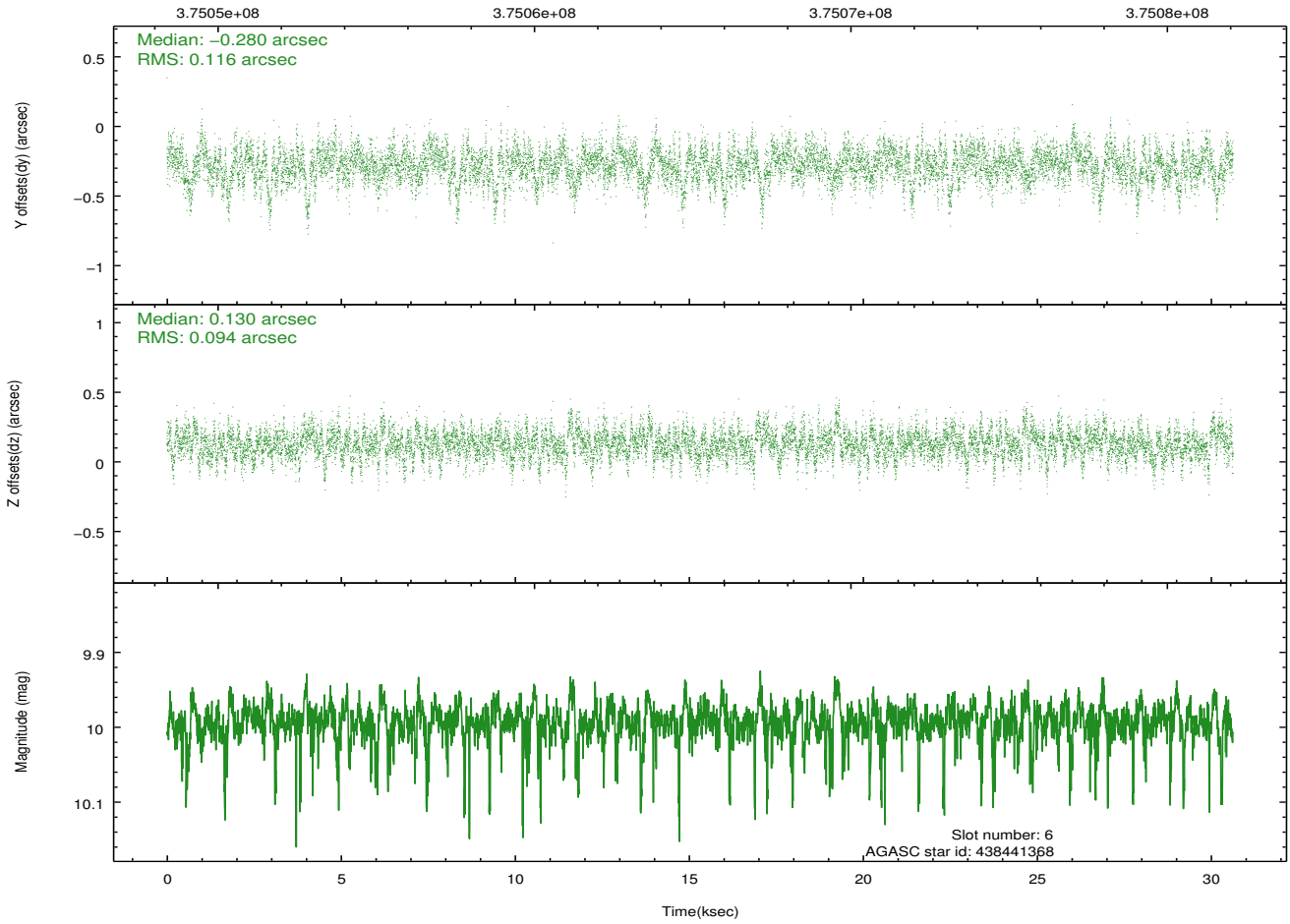
2.4.3 Slot 5



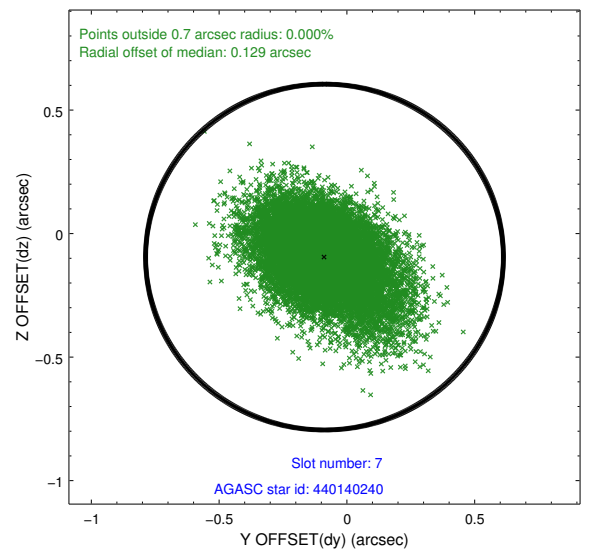
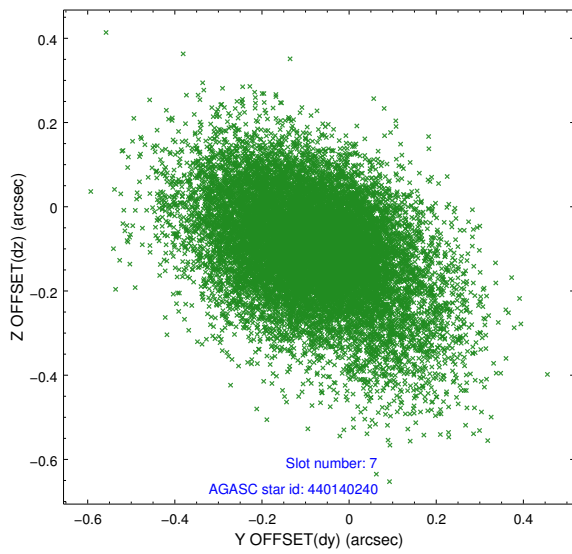
2.4.4 Slot 6



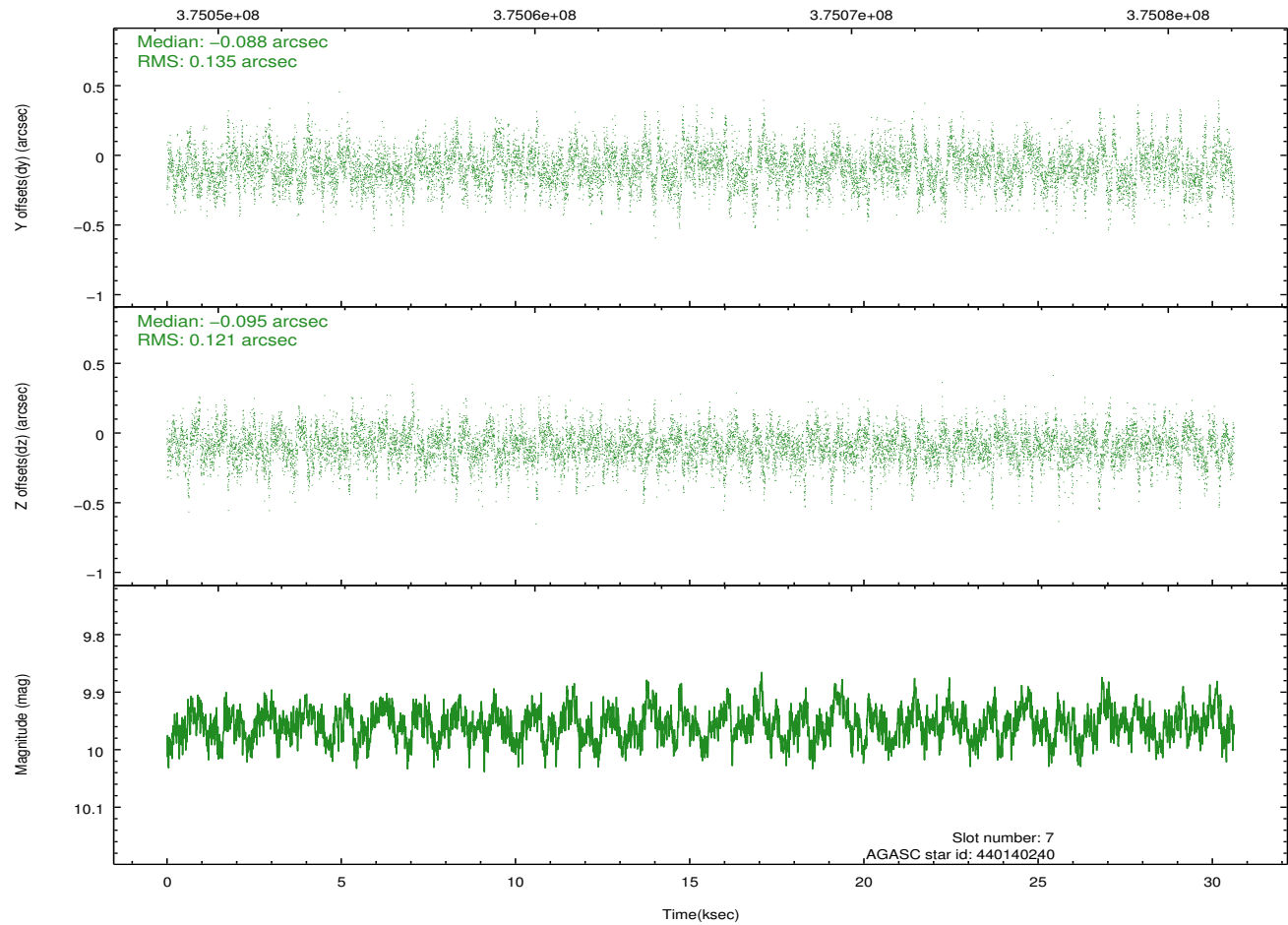
Time (s)



2.4.5 Slot 7

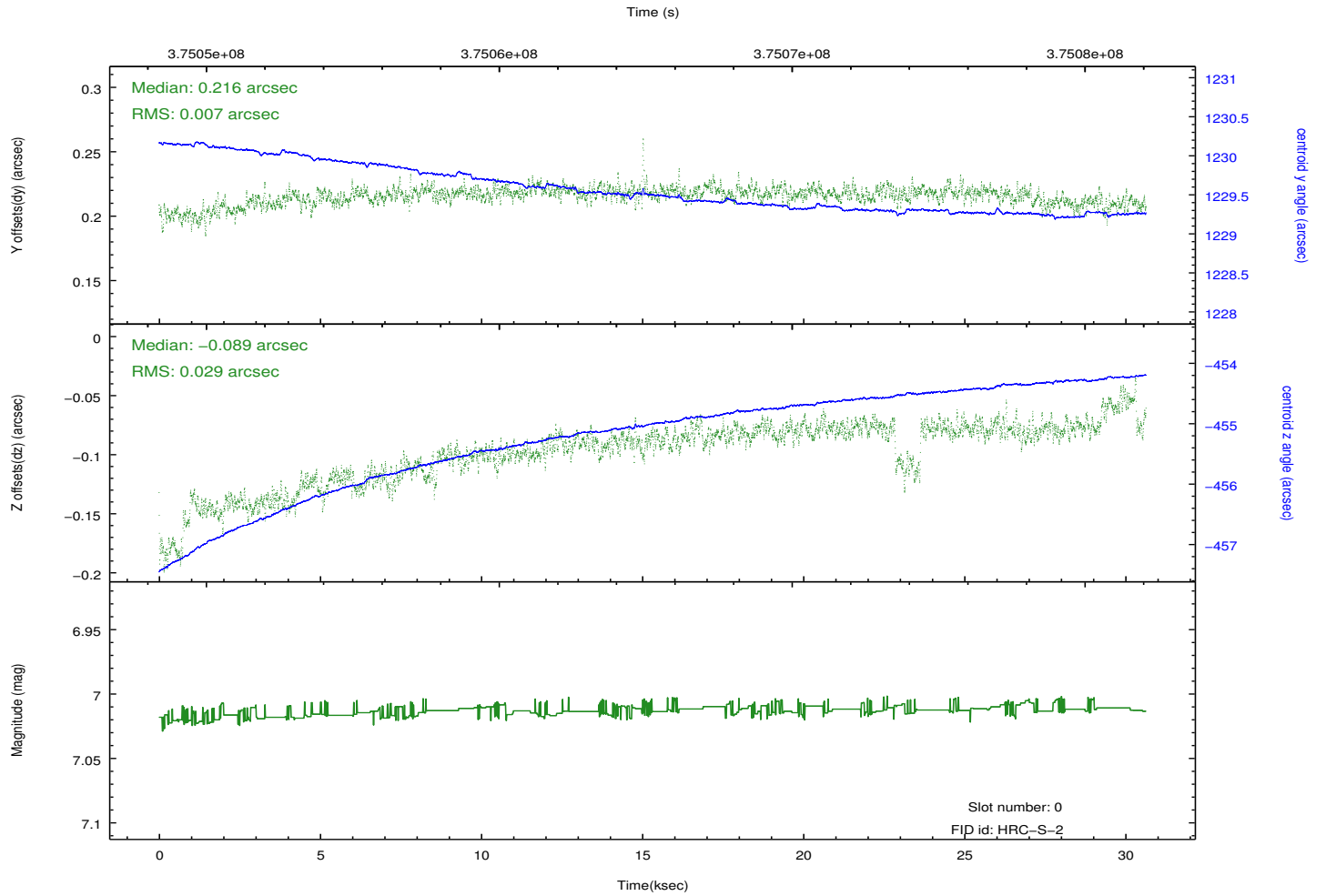
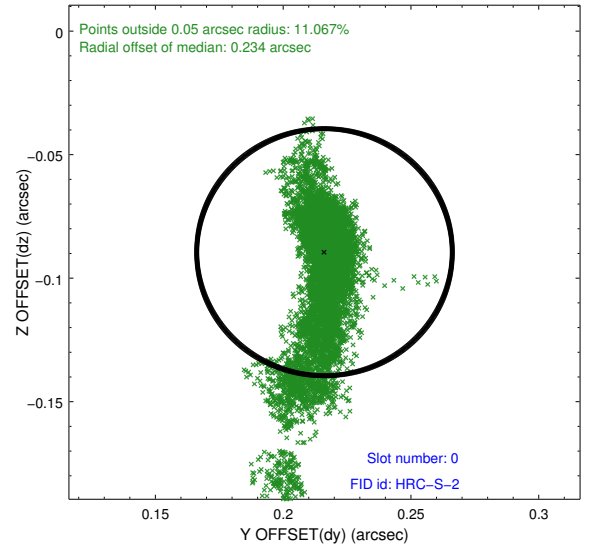
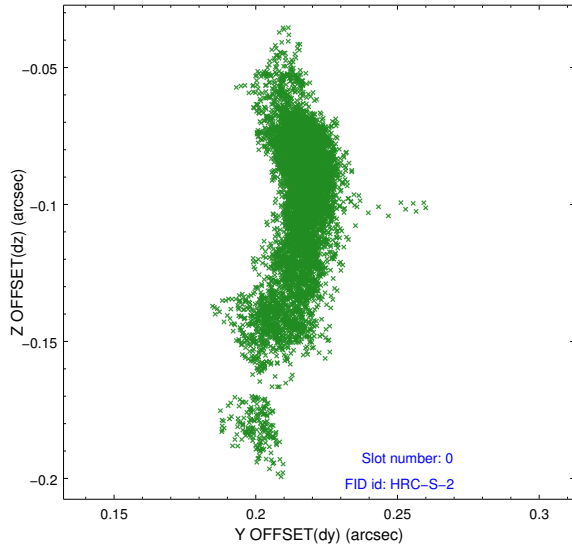


Time (s)

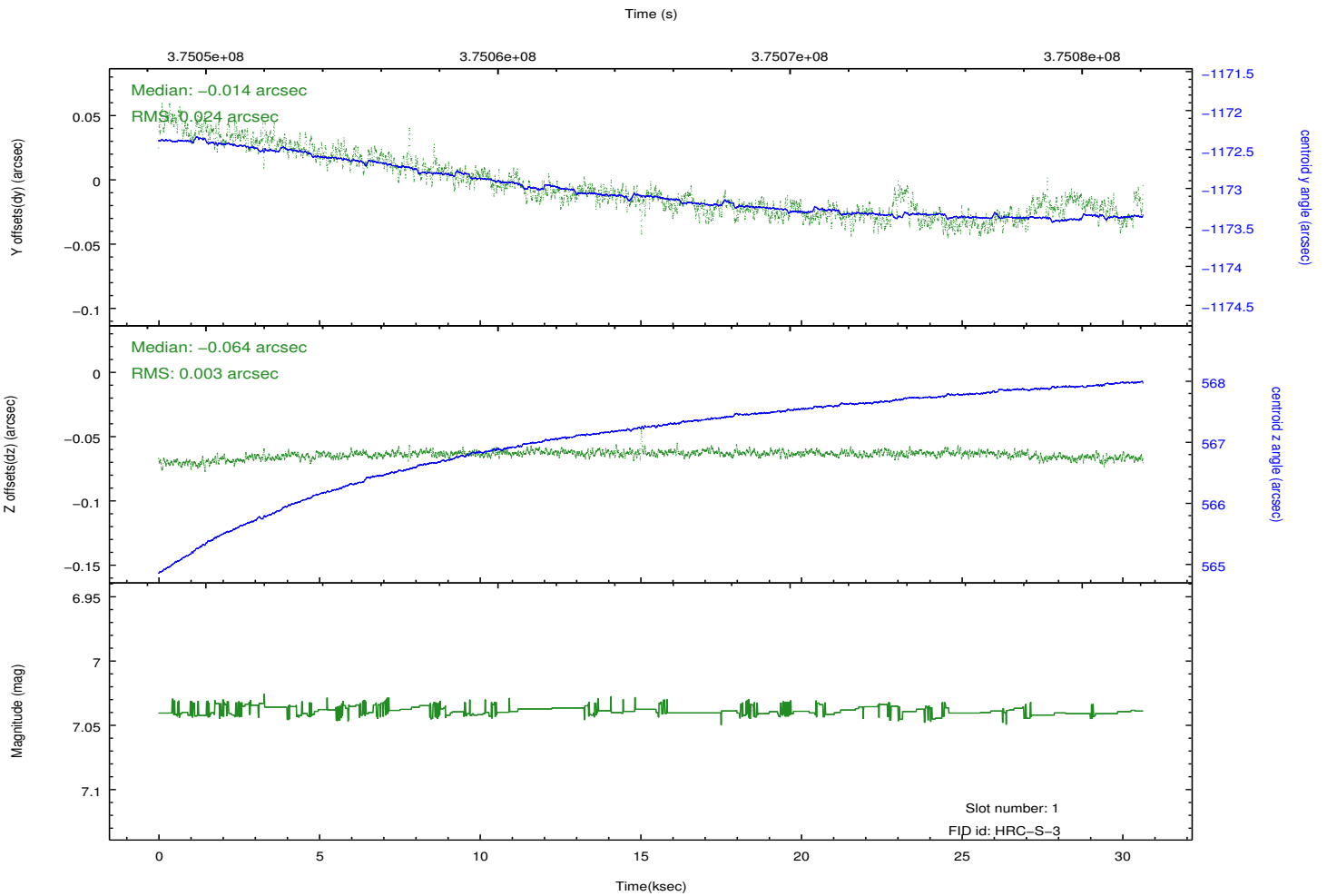
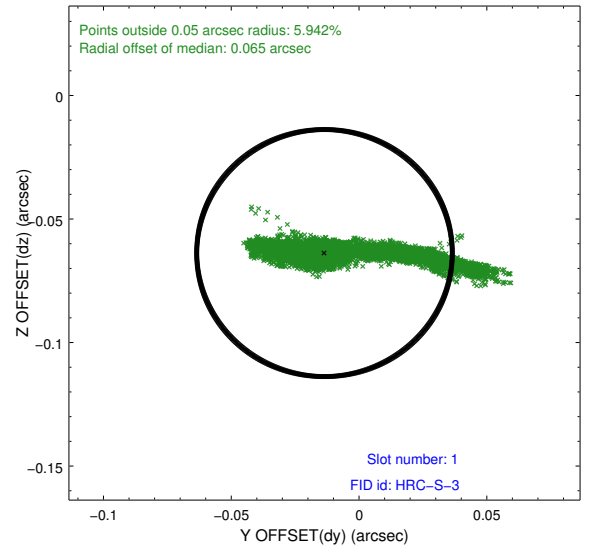
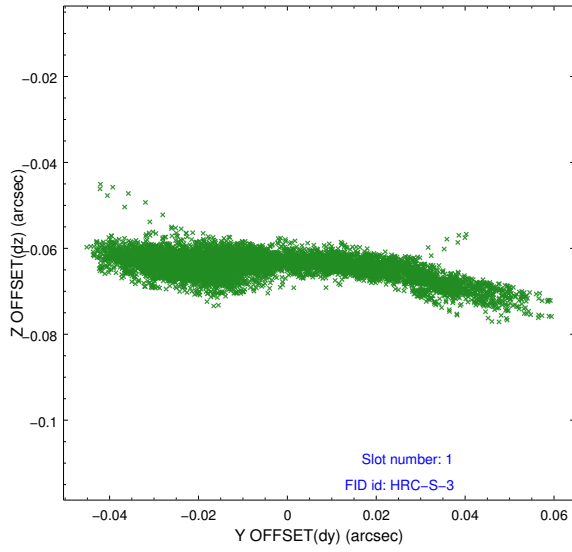


2.5 FID Slots

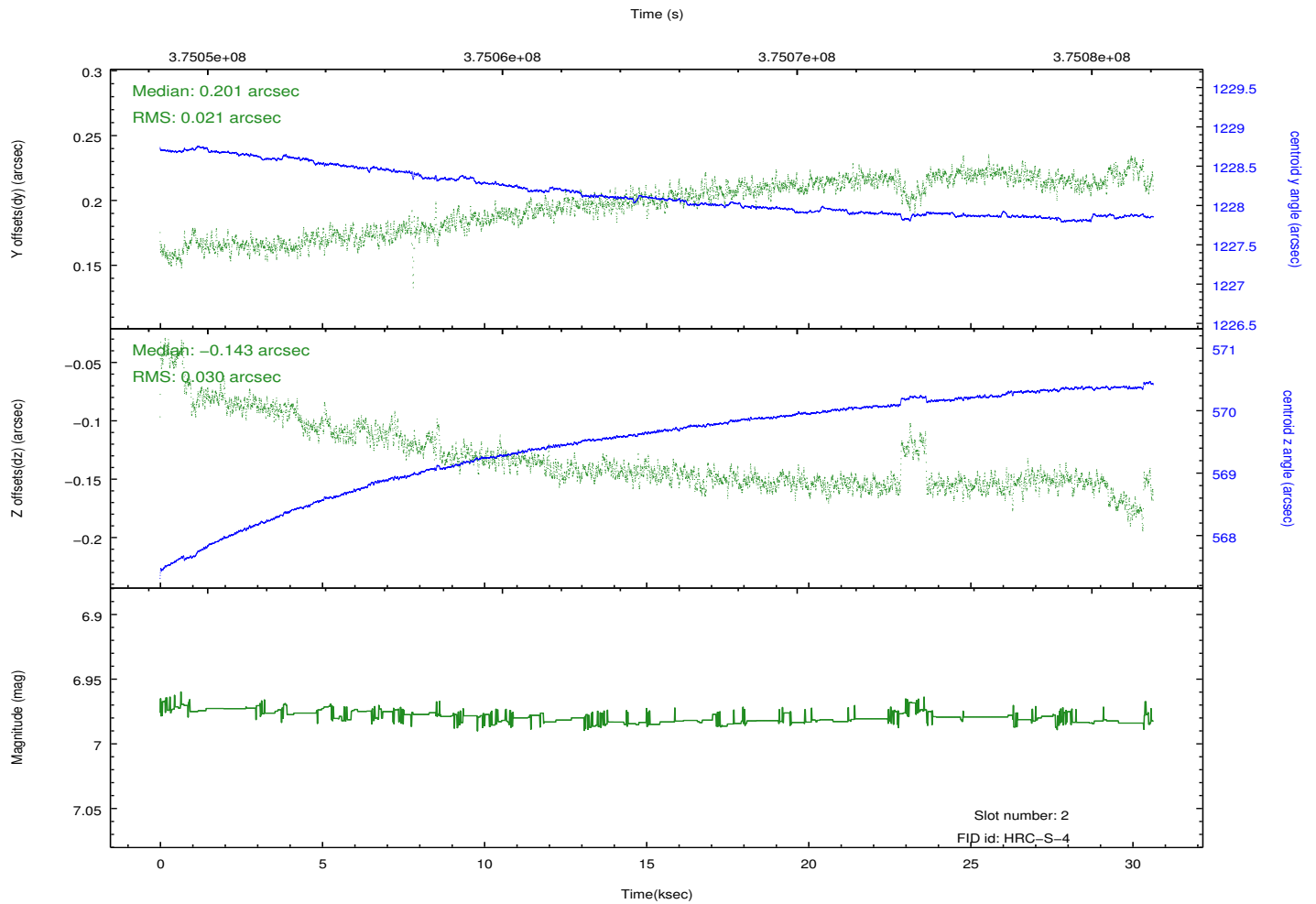
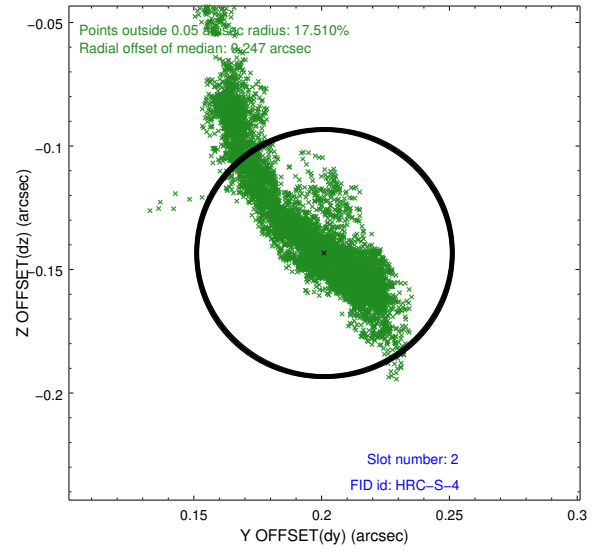
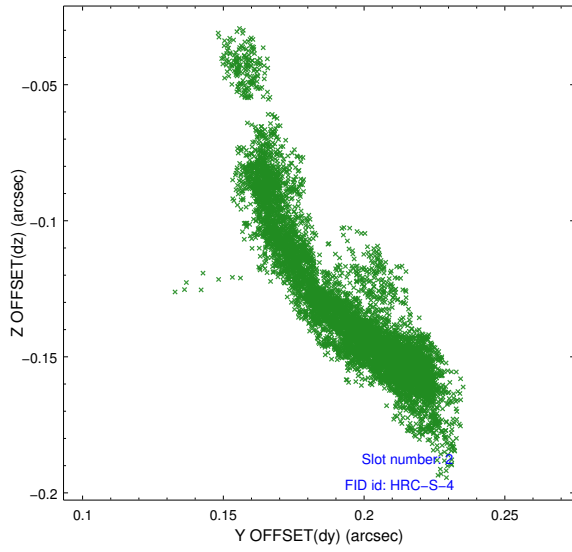
2.5.1 Slot 0



2.5.2 Slot 1

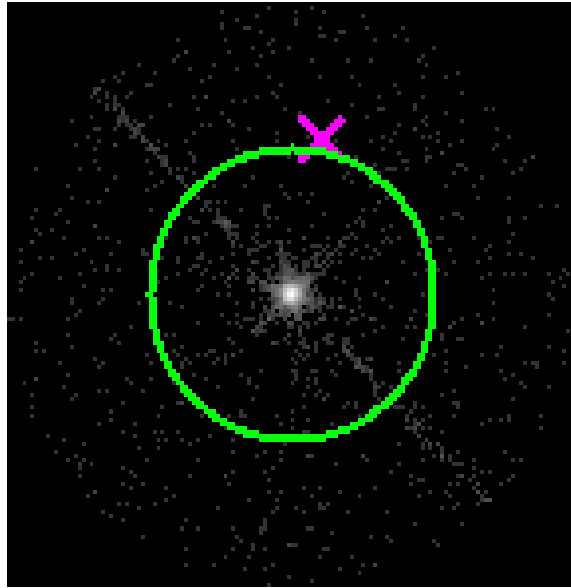


2.5.3 Slot 2

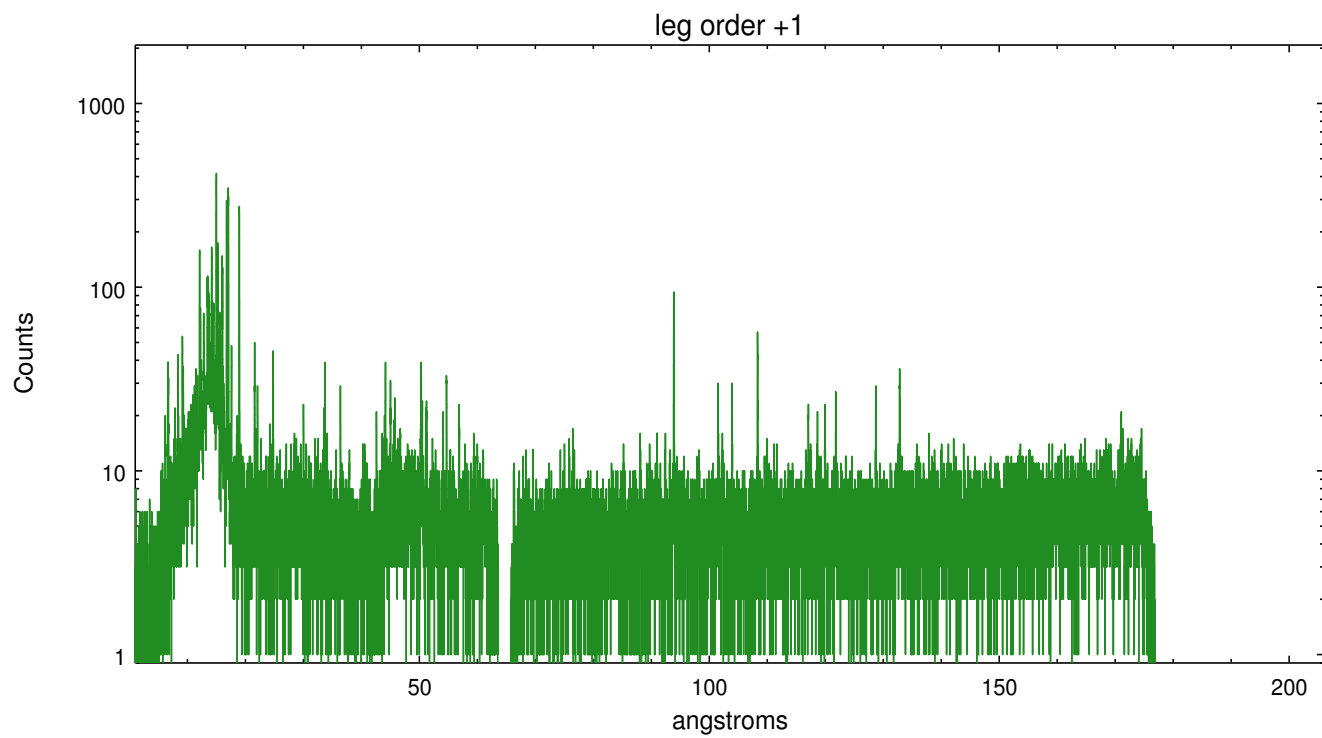
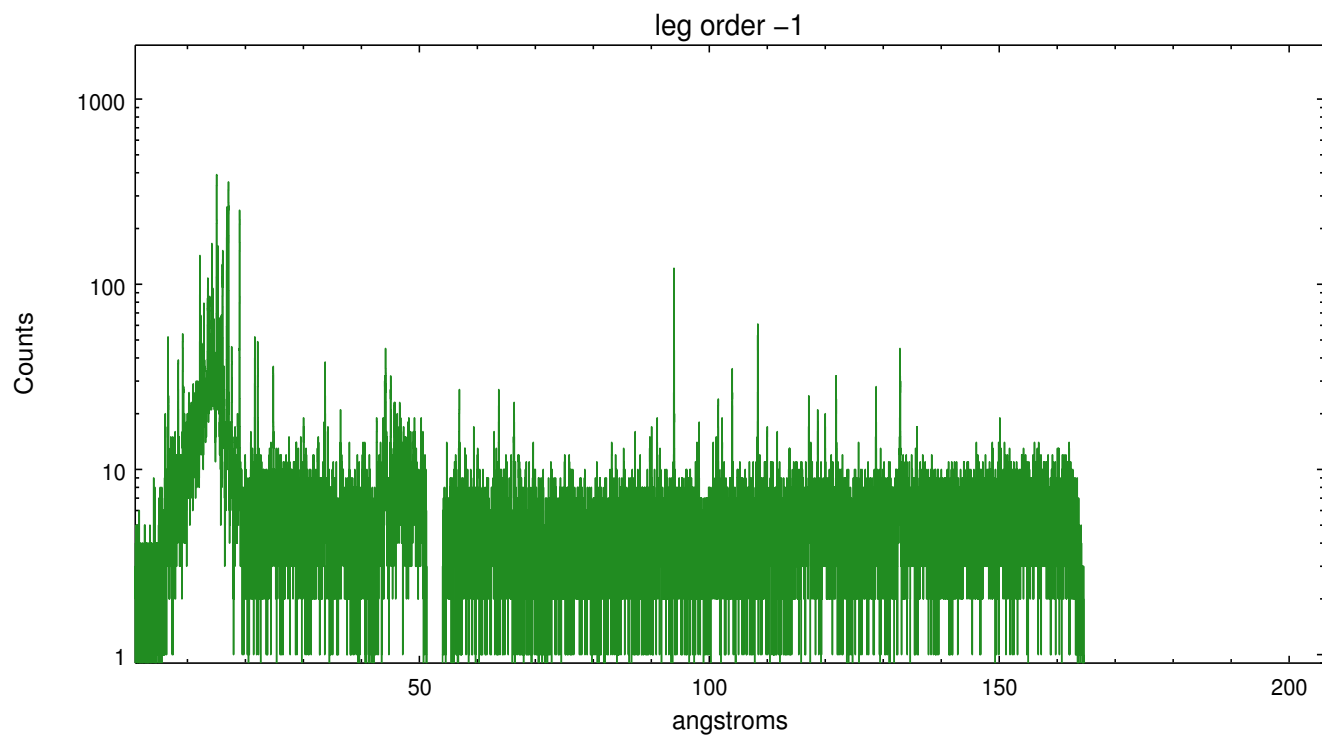


3 Gratings

3.1 LETG Arm



LETG Zero Order



A Summary

A.1 Status

V&V Scientist	Joy Nichols
V&V Date (YYYY-MM-DD)	2012.08.22
V&V Edition	1
V&V Disposition and Status	OK
V&V Charge Time	30.636482795477

A.2 Comments