

# V&V Reference Report

## L2 ASCDS Version : 8.4.5

Observation 11982 - L2 Version 2  
Chandra X-Ray Center

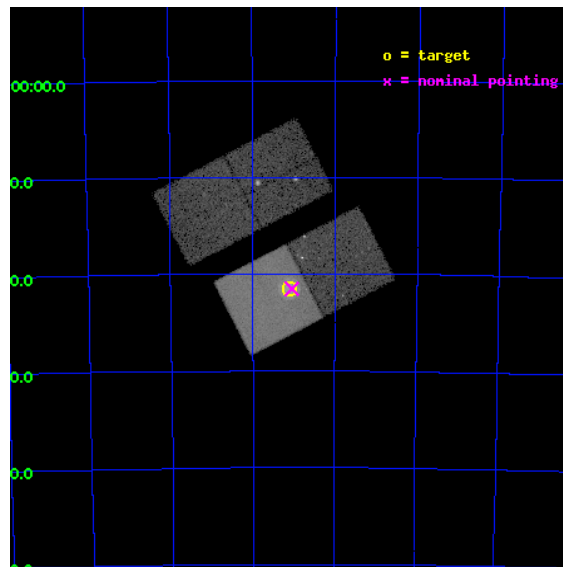
L2 Processing Date : Jun 25 2012

## Contents

<b>1</b>	<b>Front</b>	<b>2</b>
<b>2</b>	<b>OBI</b>	<b>3</b>
2.1	OBI . . . . .	3
2.1.1	Images . . . . .	3
2.1.2	Bias . . . . .	3
2.1.3	Parameters . . . . .	4
2.1.4	Events . . . . .	4
2.2	Compared Parameters . . . . .	5
2.3	Aspect . . . . .	6
2.4	Star Slots . . . . .	9
2.4.1	Slot 3 . . . . .	9
2.4.2	Slot 4 . . . . .	10
2.4.3	Slot 5 . . . . .	11
2.4.4	Slot 6 . . . . .	12
2.4.5	Slot 7 . . . . .	13
2.5	FID Slots . . . . .	14
2.5.1	Slot 0 . . . . .	14
2.5.2	Slot 1 . . . . .	15
2.5.3	Slot 2 . . . . .	16
<b>A</b>	<b>Summary</b>	<b>17</b>
A.1	Status . . . . .	17
A.2	Comments . . . . .	17

# 1 Front

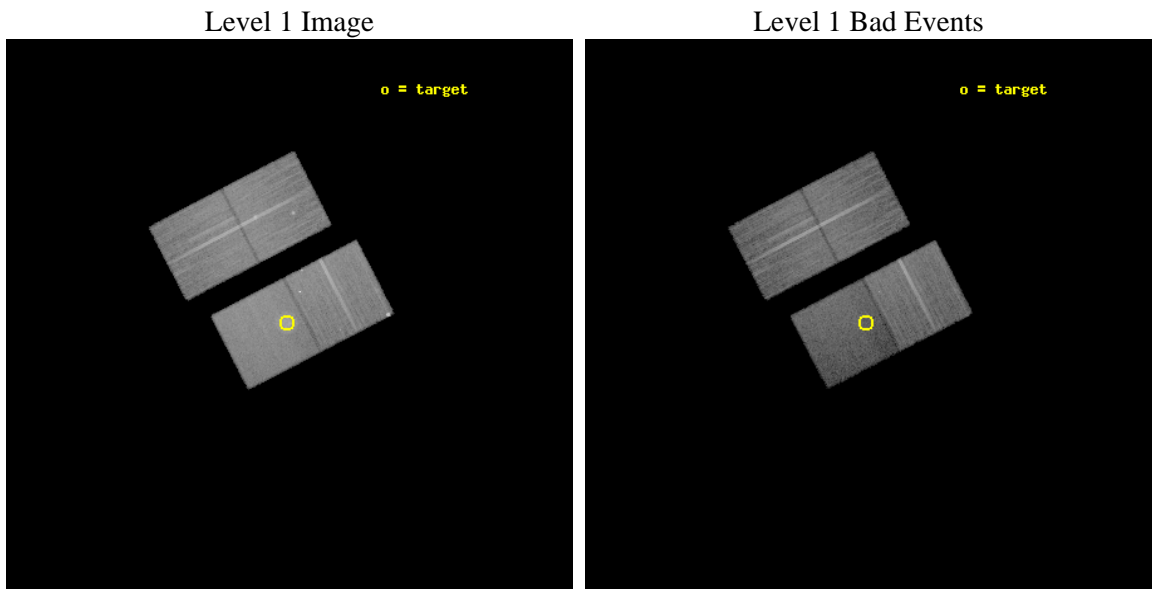
seq_num	501185	Sequence number
obs_id	11982	Observation id
title	A Detailed Study of the Aged O-Rich Supernova Remnant 0049-73.6	Pr
observer	DR. Sangwook Park	Principal investigator
object	SNR 0049-73.6	Source name
dtcycle	0	&#160
cycle	P	events from which exps? Prim/Second/Both
ra_targ	12.779167	Observer's specified target RA [deg]
dec_targ	-73.358333	Observer's specified target Dec [deg]
ra_nom	12.762319624251	Nominal RA [deg]
dec_nom	-73.35869106353	Nominal Dec [deg]
roll_nom	152.64047574172	Nominal Roll [deg]
revision	2	Processing version of data
ontime	24893.00019145	Sum of GTIs [s]
livetime	24567.754817989	Livetime [s]
ontime2	24893.00019145	Sum of GTIs [s]
ontime3	24893.00019145	Sum of GTIs [s]
ontime6	24886.718240798	Sum of GTIs [s]
ontime7	24893.00019145	Sum of GTIs [s]
l2events	143490	Number of level 2 events



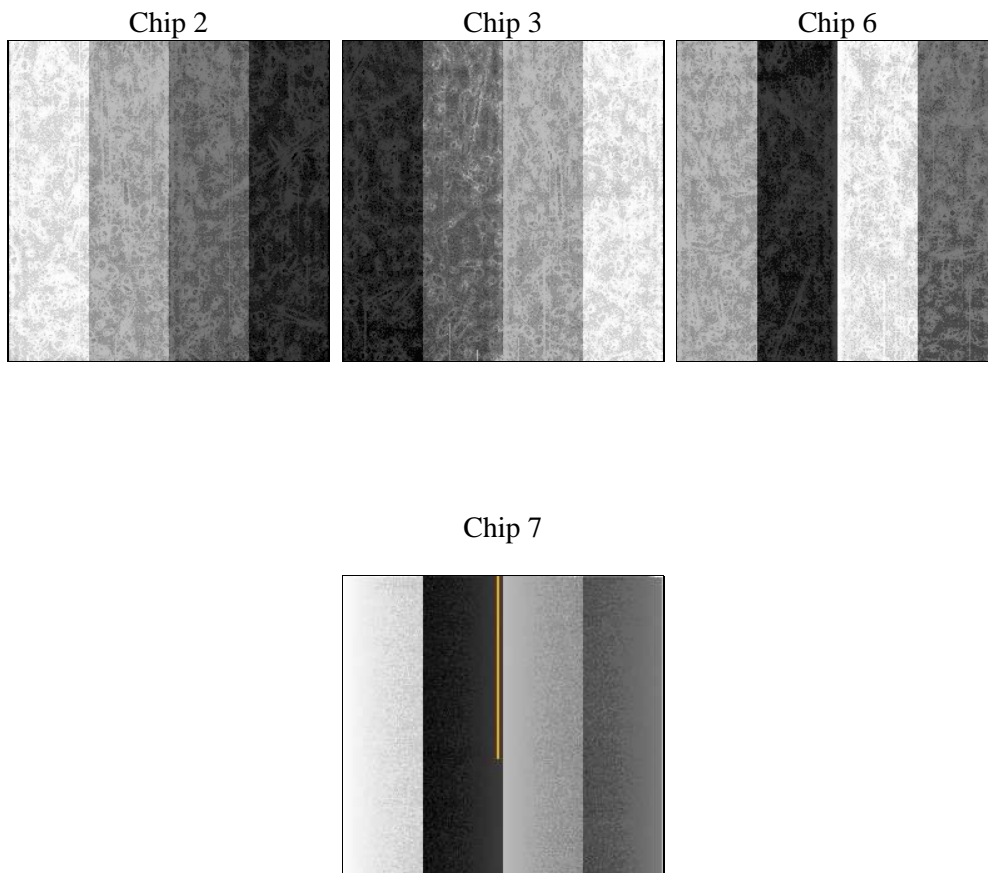
## 2 OBI

### 2.1 OBI

#### 2.1.1 Images



#### 2.1.2 Bias



### 2.1.3 Parameters

obi_num	0	Obi number	sched_exp_time	24760.261000	[s] Scheduled observation exposure time
ascdsver	8.4.5	Processing system revision	ontime	24893.00019145	Sum of GTIs [s]
caldsver	4.4.10	&#160	ontime2	24893.00019145	Sum of GTIs [s]
date	2012-06-25T10:11:00	Date and time of file creation	ontime3	24893.00019145	Sum of GTIs [s]
revision	2	Processing version of data	ontime6	24886.718240798	Sum of GTIs [s]
			ontime7	24893.00019145	Sum of GTIs [s]
			l1events	715468	Number of level 1 events

### 2.1.4 Events

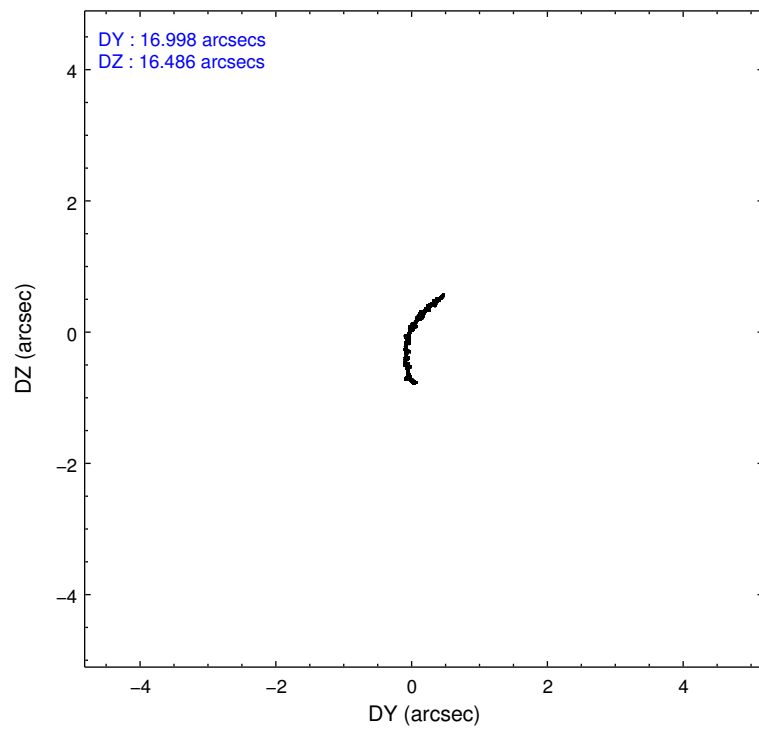
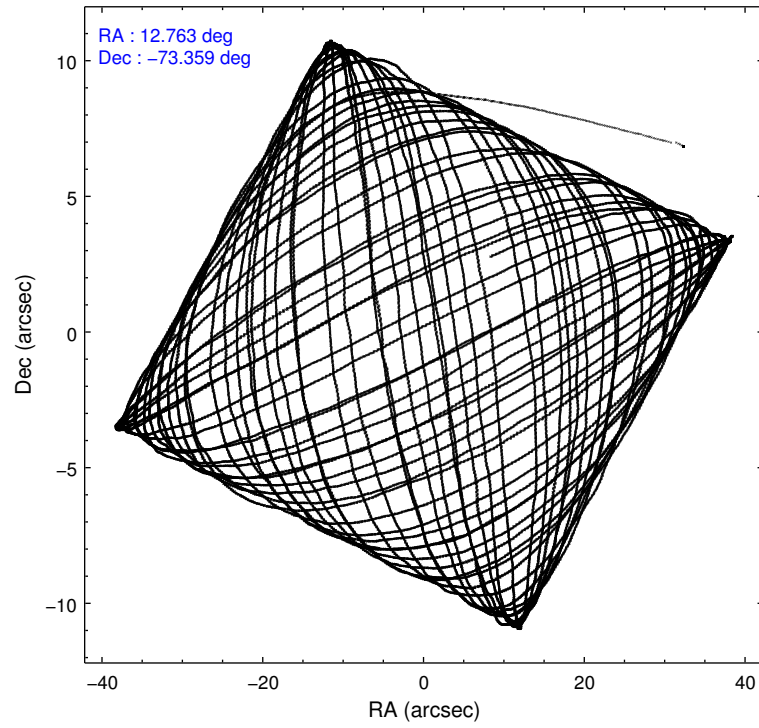
	ccd 2	ccd 3	ccd 6	ccd 7
level 1 events	176717	169659	181513	187579
rejected events	156678	152583	156334	92979
rejected %	88%	89%	86%	49%

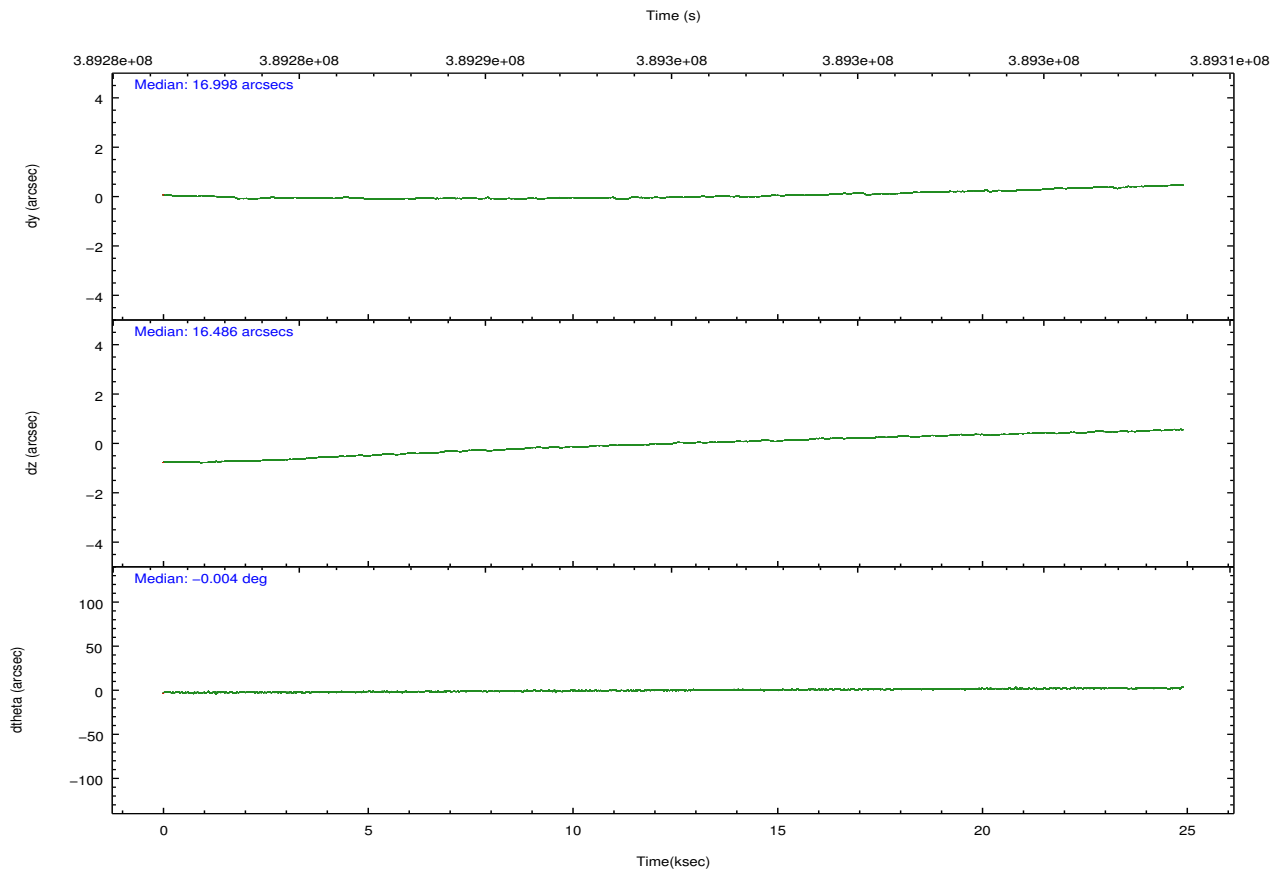
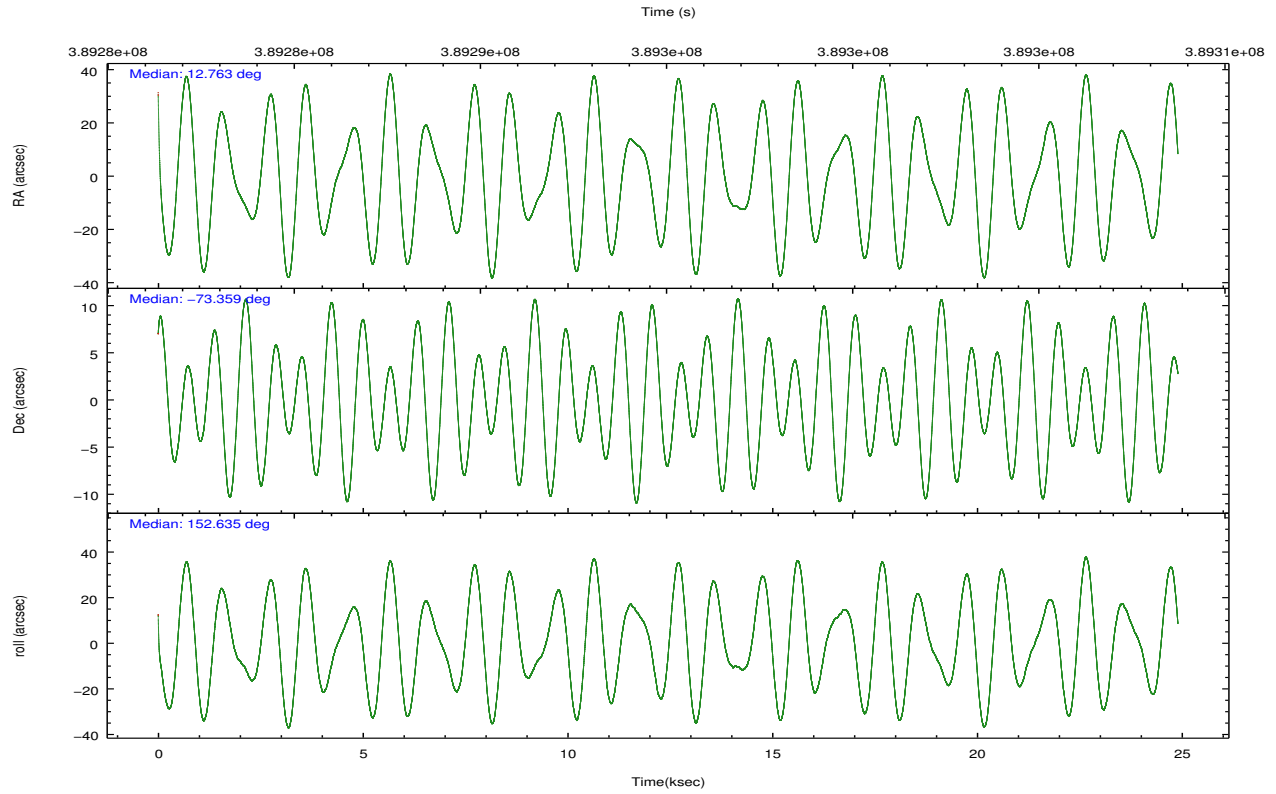
	ccd 2	ccd 3	ccd 6	ccd 7
grade 0 events	8445	6405	12256	11897
	4%	3%	6%	6%
grade 1 events	121	106	224	262
	0%	0%	0%	0%
grade 2 events	4692	3698	4860	20843
	2%	2%	2%	11%
grade 3 events	1937	1929	2102	9033
	1%	1%	1%	4%
grade 4 events	1976	1937	2185	9069
	1%	1%	1%	4%
grade 5 events	5447	6543	6634	19114
	3%	3%	3%	10%
grade 6 events	3332	3370	4153	45286
	1%	1%	2%	24%
grade 7 events	150767	145671	149099	72075
	85%	85%	82%	38%

## 2.2 Compared Parameters

Parameter	Planned	Actual	Parameter	Planned	Actual
Instrument	ACIS	ACIS	Obspar format version number	7	7
Detector	ACIS-2367	ACIS-2367	Obspar file type	PREDICTED	ACTUAL
Grating	NONE	NONE	Obspar update status	NONE	UPDATED
Data mode	VFAINT	VFAINT	Number of optional ACIS chips dropped	0	0
Observation mode	POINTING	POINTING	On-chip summing requested	N	N
[deg] Pointing RA	12.857587	12.76231962425106	Subarray requested	NONE	NONE
[deg] Pointing Dec	-73.357044	-73.35869106352992	Alternating exposures requested	N	N
[deg] Pointing Roll	152.575128	152.640475741719	[s] Primary exposure time	0.000000	3.1
[mm] SIM focus pos	-0.684267	-0.6828225247311905			
[mm] SIM defocus	0	0.001444936568705701			
[mm] SIM translation stage pos	-190.132523	-190.1400660498719			
[mm] SIM translation stage offset	0	0.00754346686406393			
[s] Observation start time (MET)	389282726.184000	389281607.87385			
Observation start date	2010-05-03T14:04:20	2010-05-03T13:46:47			
[s] Observation end time (MET)	389307486.184000	389307703.86268			
Observation end date	2010-05-03T20:57:00	2010-05-03T21:01:43			
Read mode	TIMED	TIMED			

## 2.3 Aspect



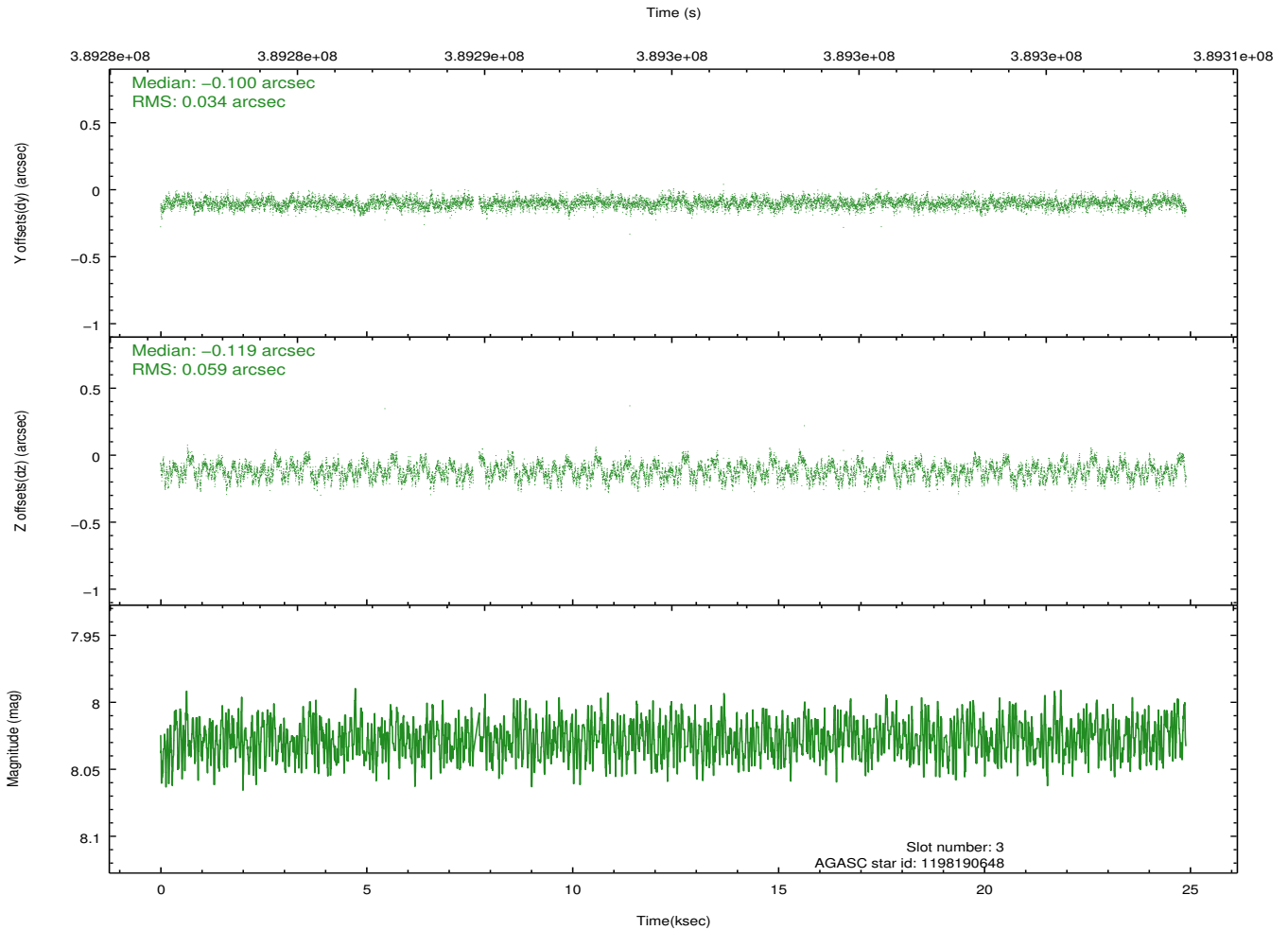
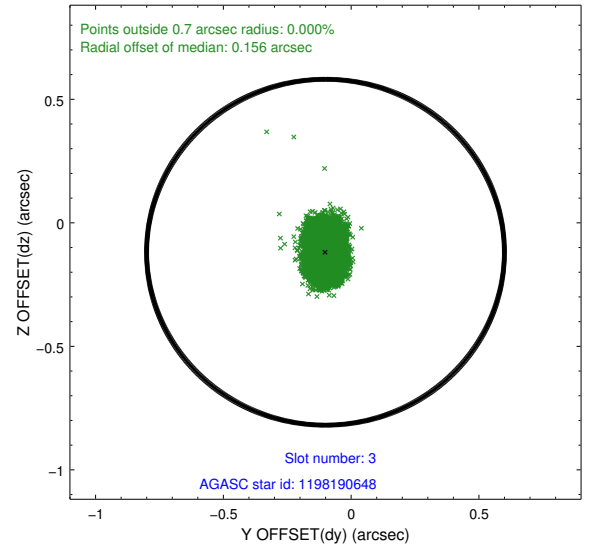
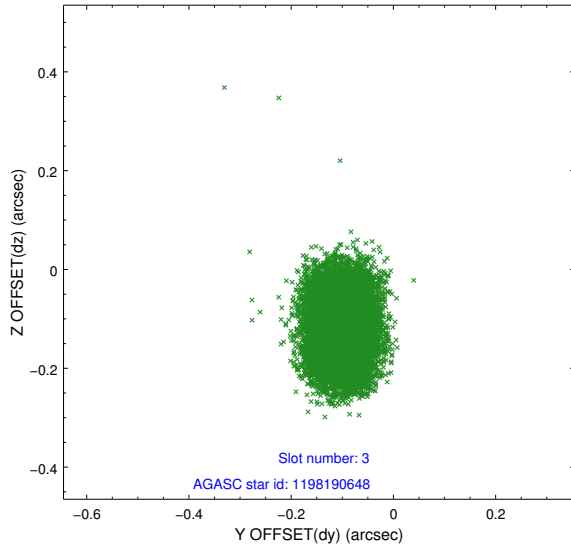


### Slot Statistics

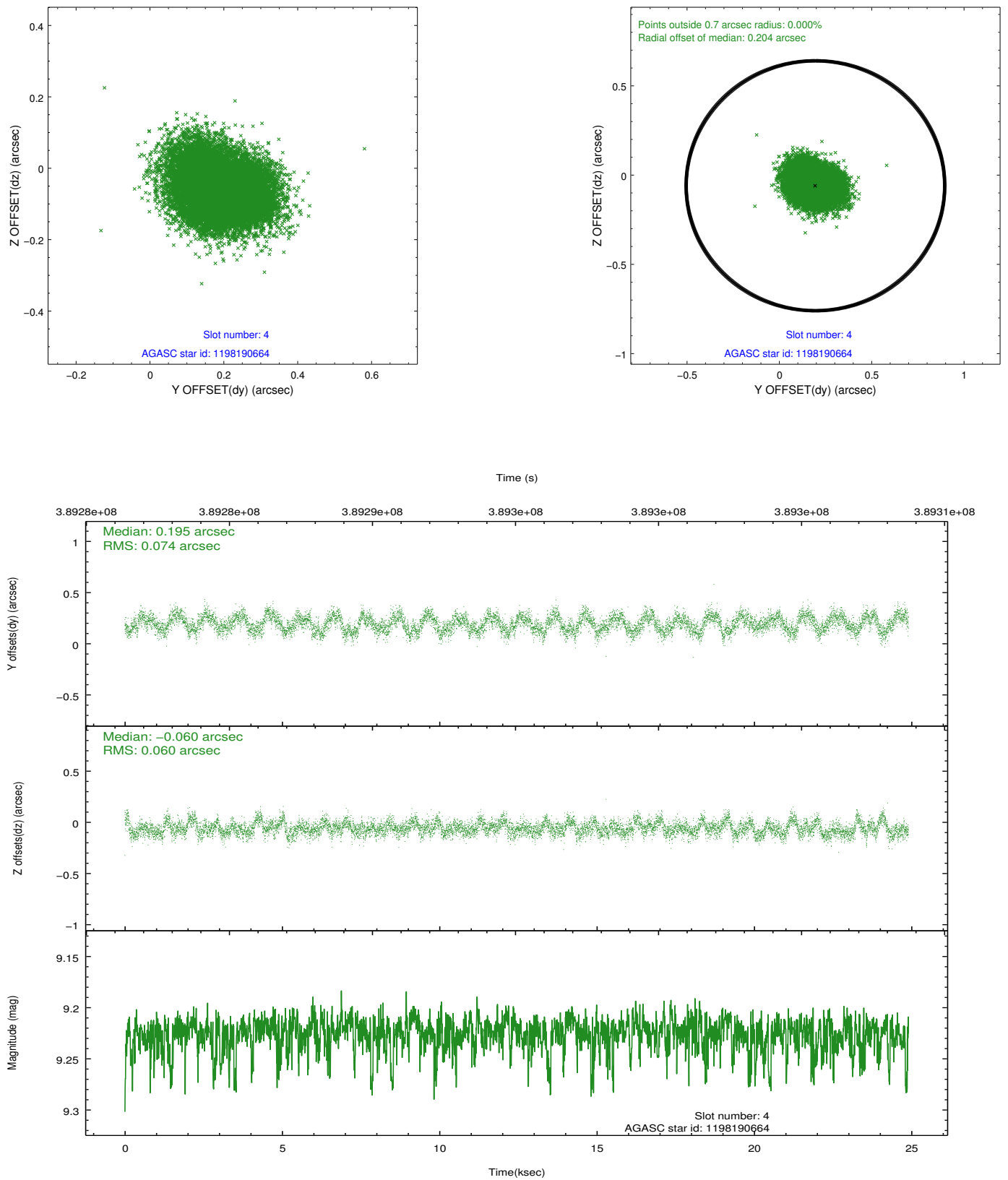
slot	status	id	mag	n_pts	med_dy	med_dz	dr1	dr2	ra	dec	mean_y	mean_z
0	FID	ACIS-S-2	6.92	6074	-0.081	-0.026	0.014	0.021	0.000000	0.000000	-770.17	-1737.87
1	FID	ACIS-S-4	7.00	6074	0.190	0.046	0.008	0.014	0.000000	0.000000	2143.32	170.56
2	FID	ACIS-S-5	7.03	6074	-0.138	-0.011	0.014	0.031	0.000000	0.000000	-1822.92	164.31
3	GUIDE	1198190648	8.03	12077	-0.100	-0.119	0.072	0.116	12.344115	-73.478663	263.95	633.01
4	GUIDE	1198190664	9.22	12136	0.195	-0.060	0.103	0.160	14.057016	-73.825958	-1850.60	955.42
5	GUIDE	1198191824	9.31	12139	0.015	-0.047	0.121	0.195	11.519918	-73.478175	1007.66	1031.60
6	GUIDE	1198192408	9.40	12123	-0.128	0.296	0.120	0.198	12.860639	-72.678863	1122.02	-2167.83
7	GUIDE	1198192456	8.58	12141	0.029	-0.071	0.087	0.139	13.422921	-73.869405	-1352.26	1379.07

## 2.4 Star Slots

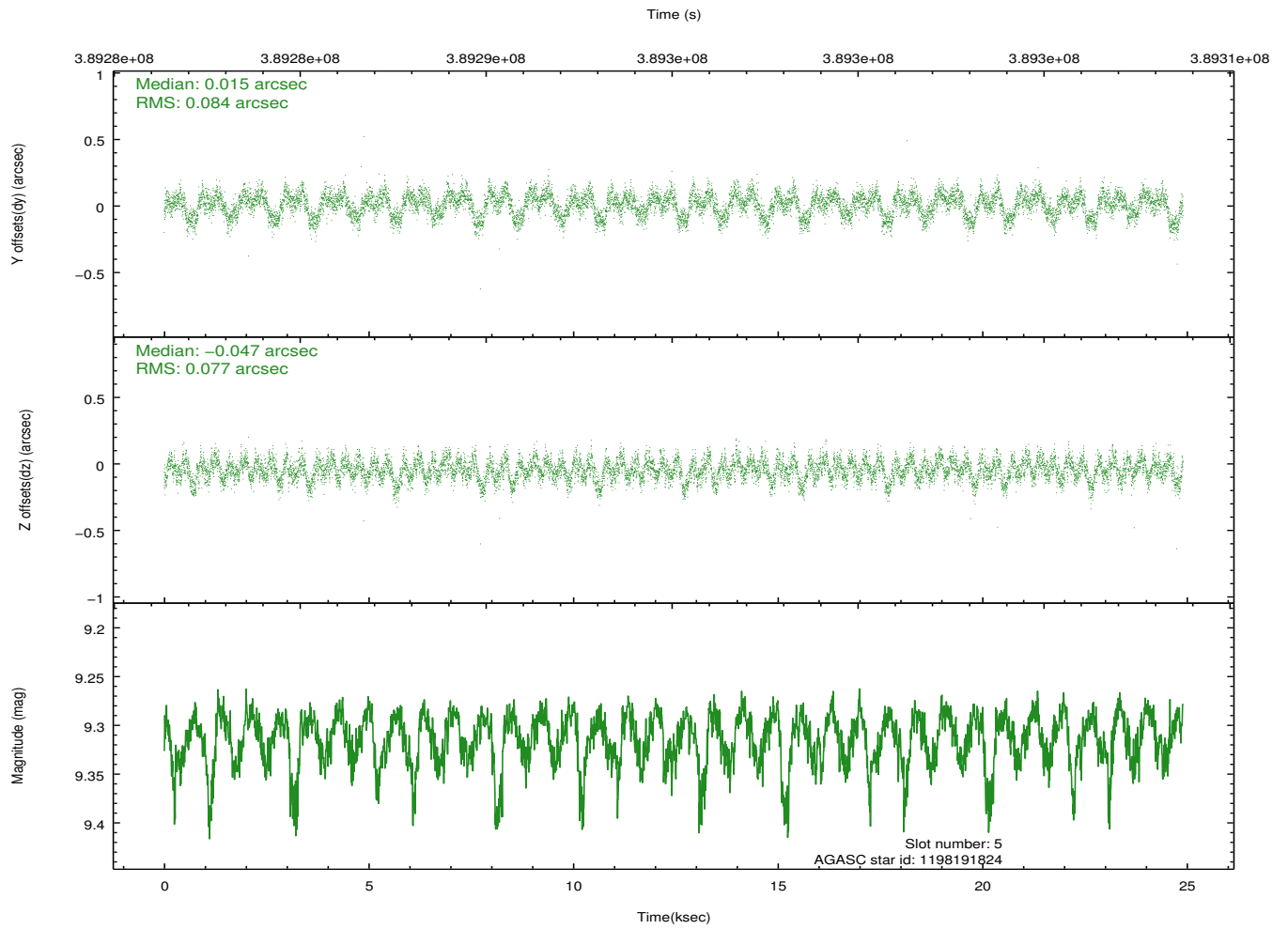
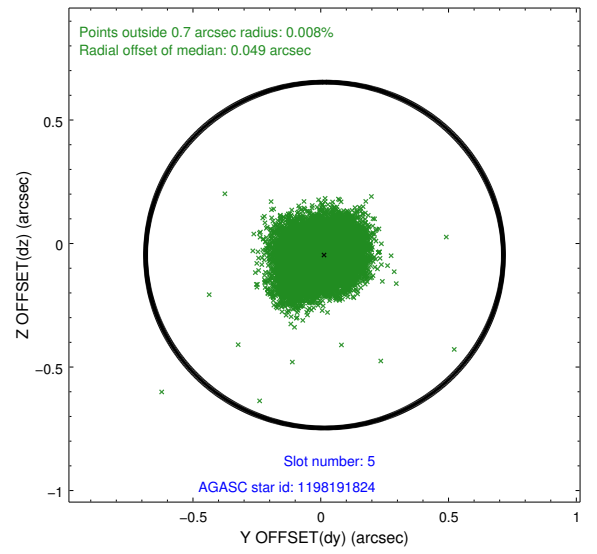
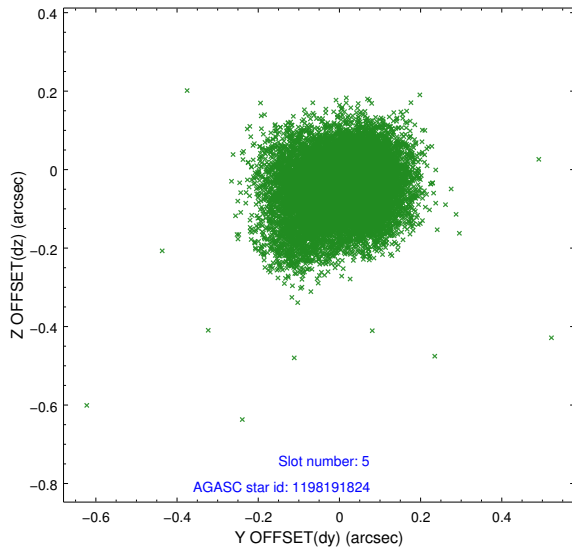
### 2.4.1 Slot 3



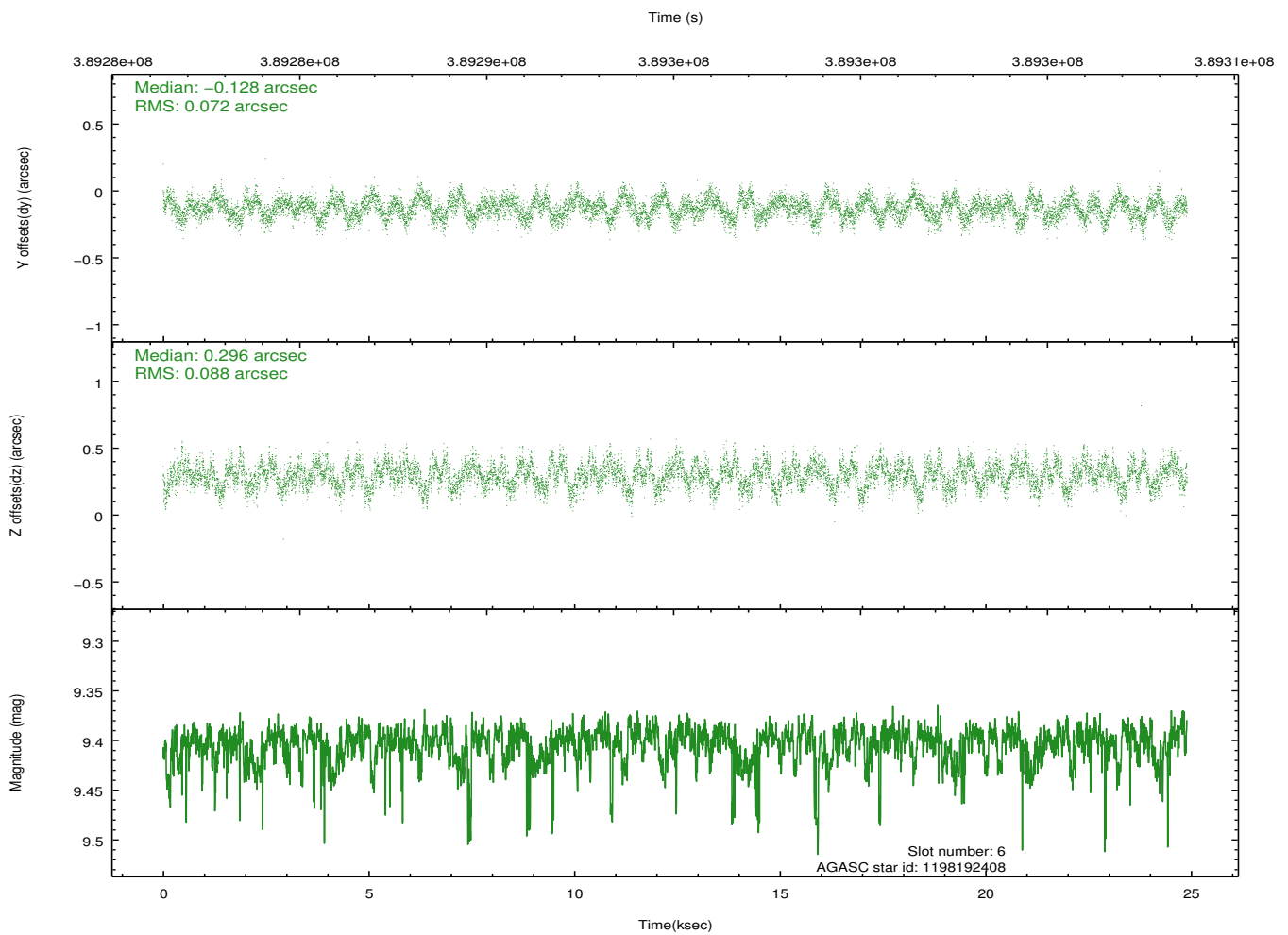
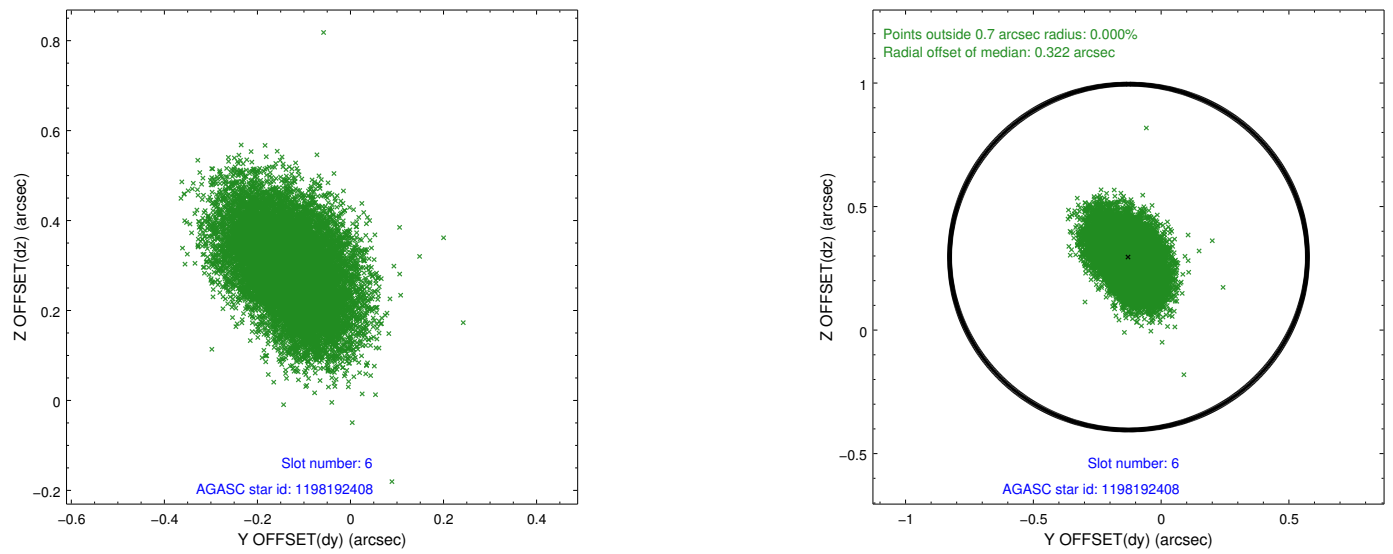
## 2.4.2 Slot 4



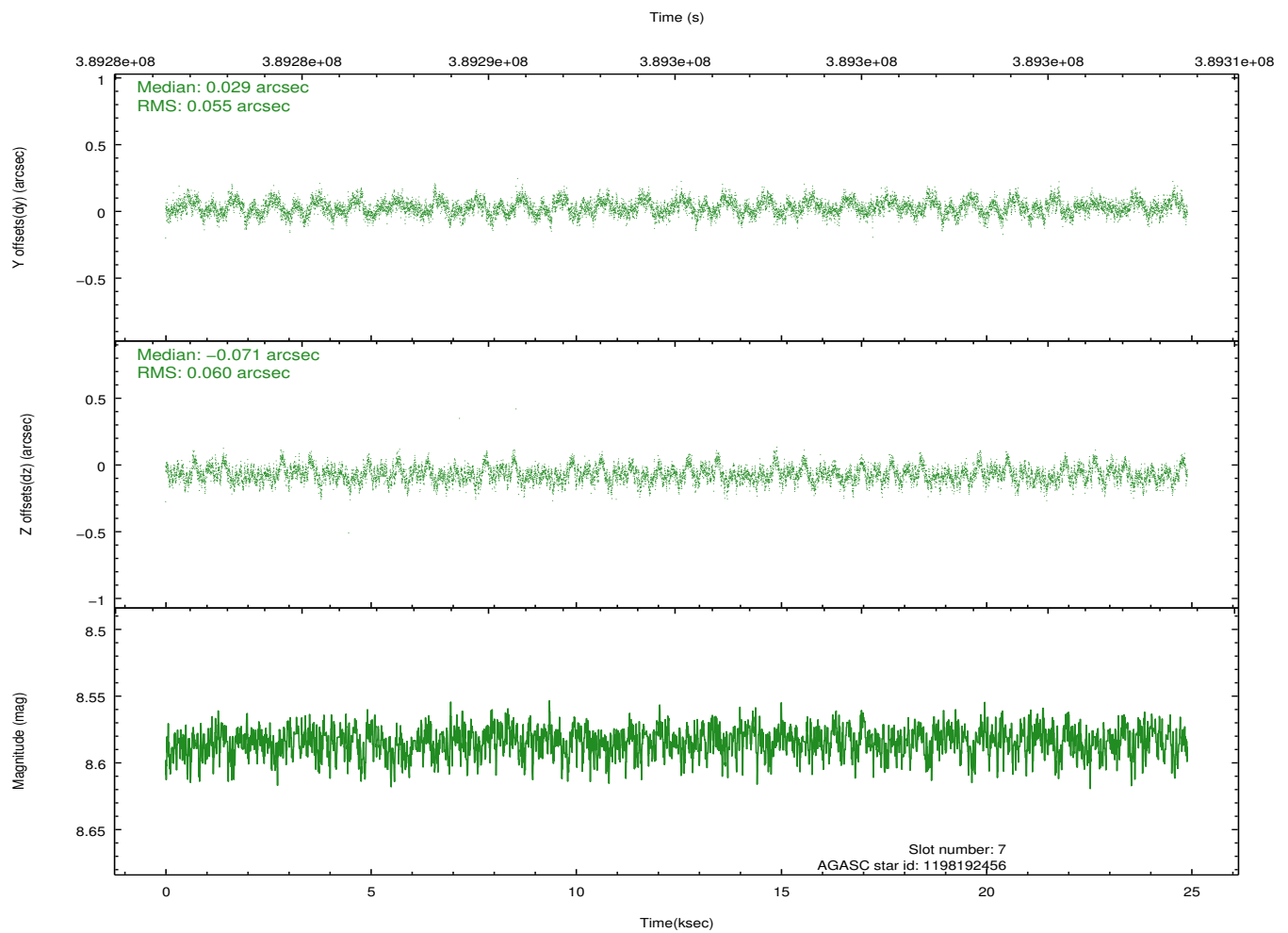
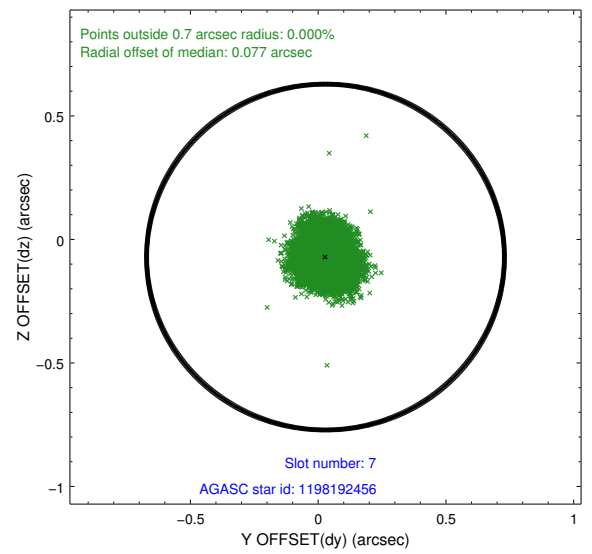
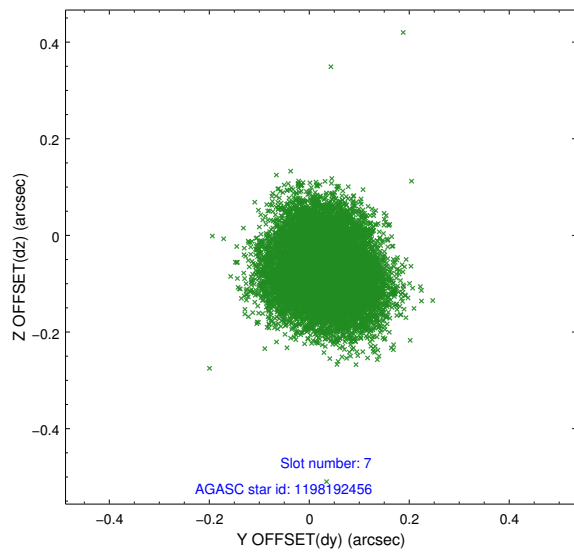
### 2.4.3 Slot 5



## 2.4.4 Slot 6

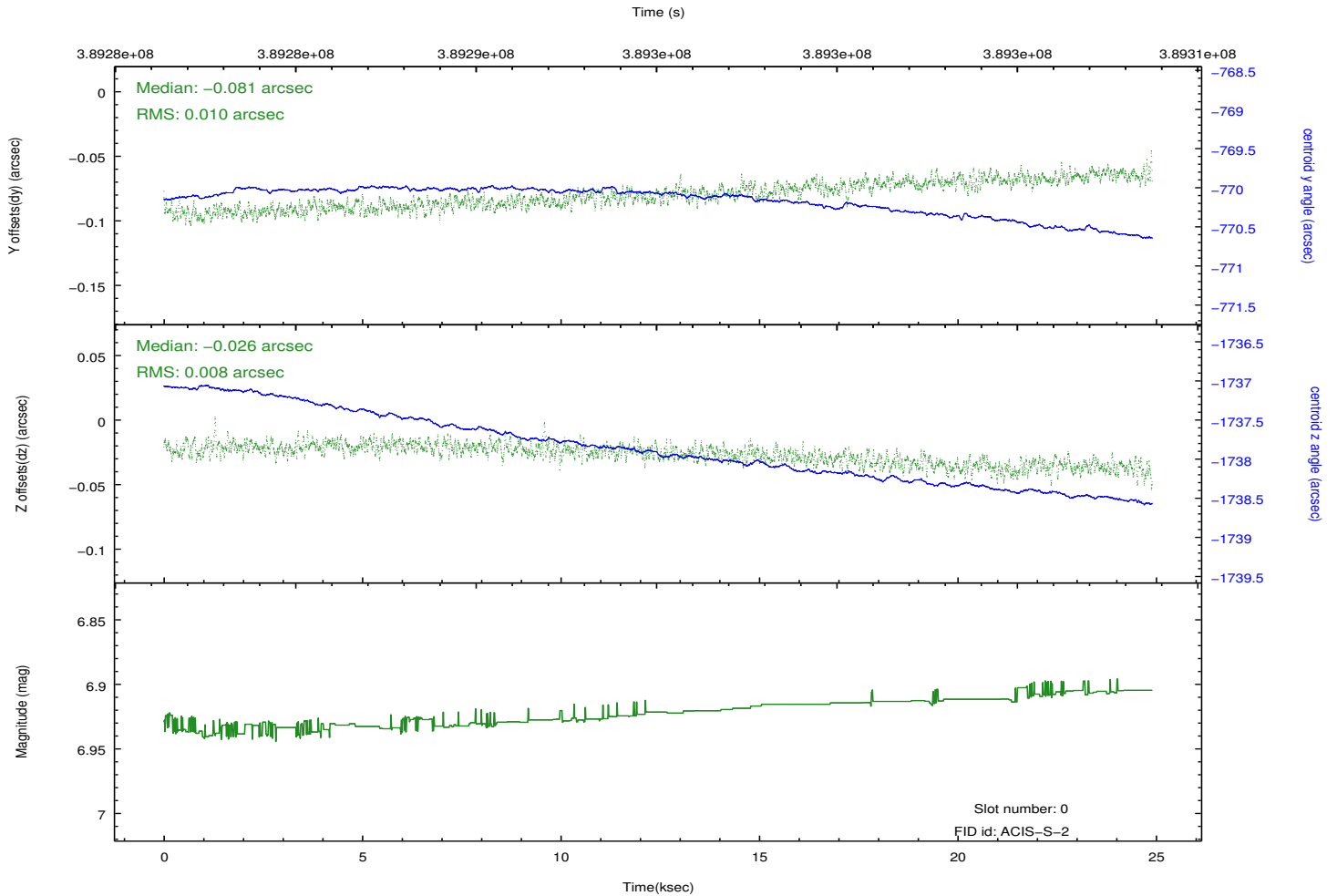
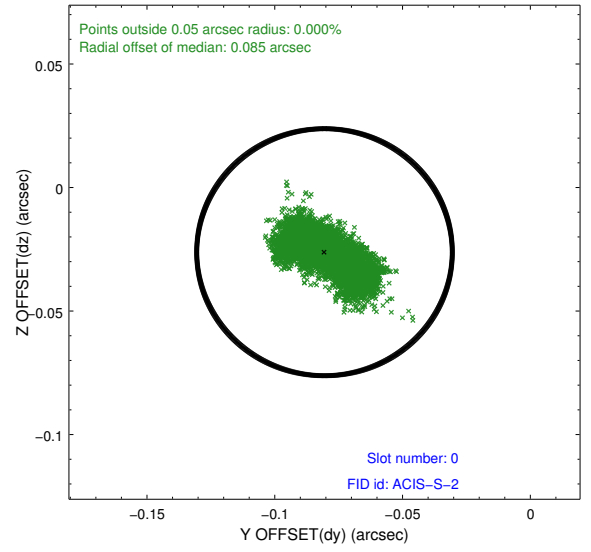
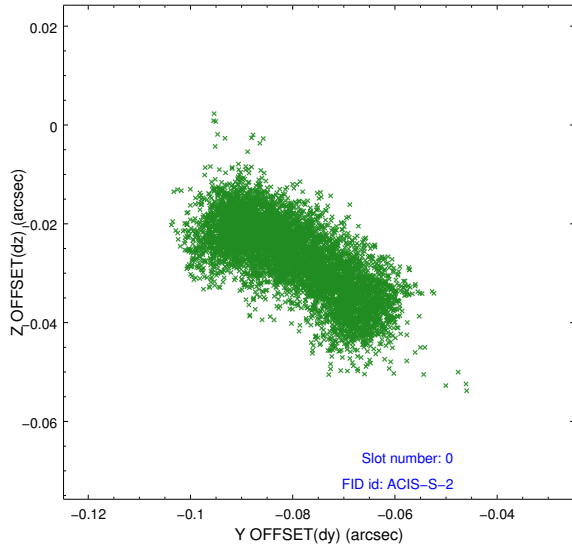


## 2.4.5 Slot 7

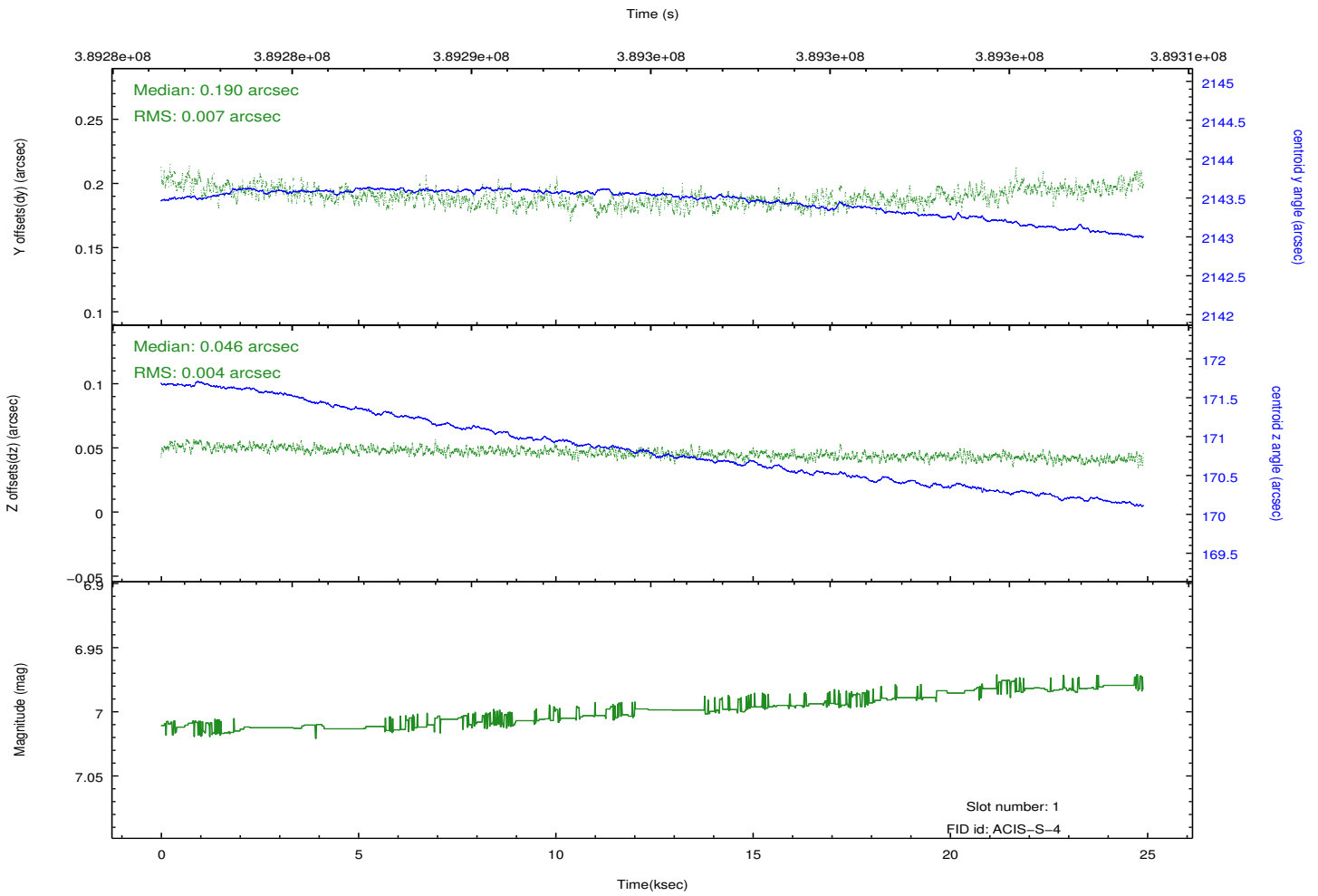
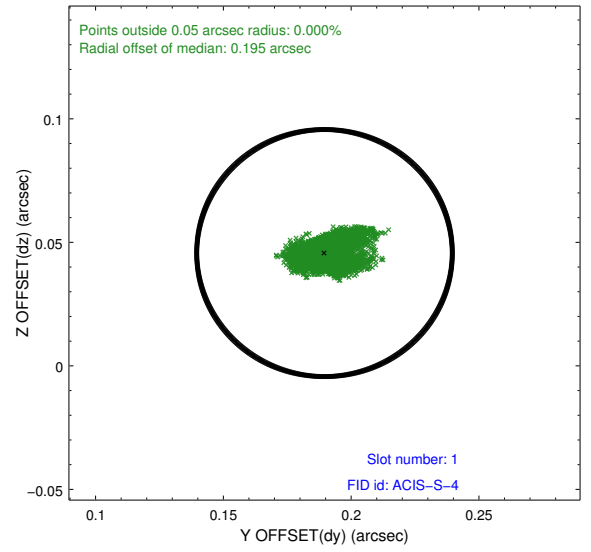
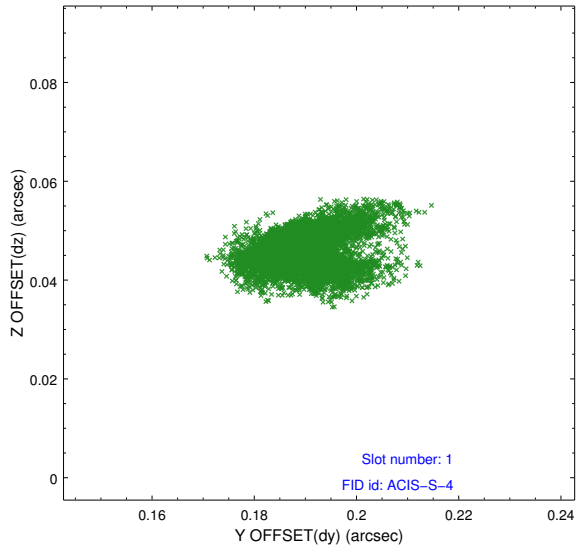


## 2.5 FID Slots

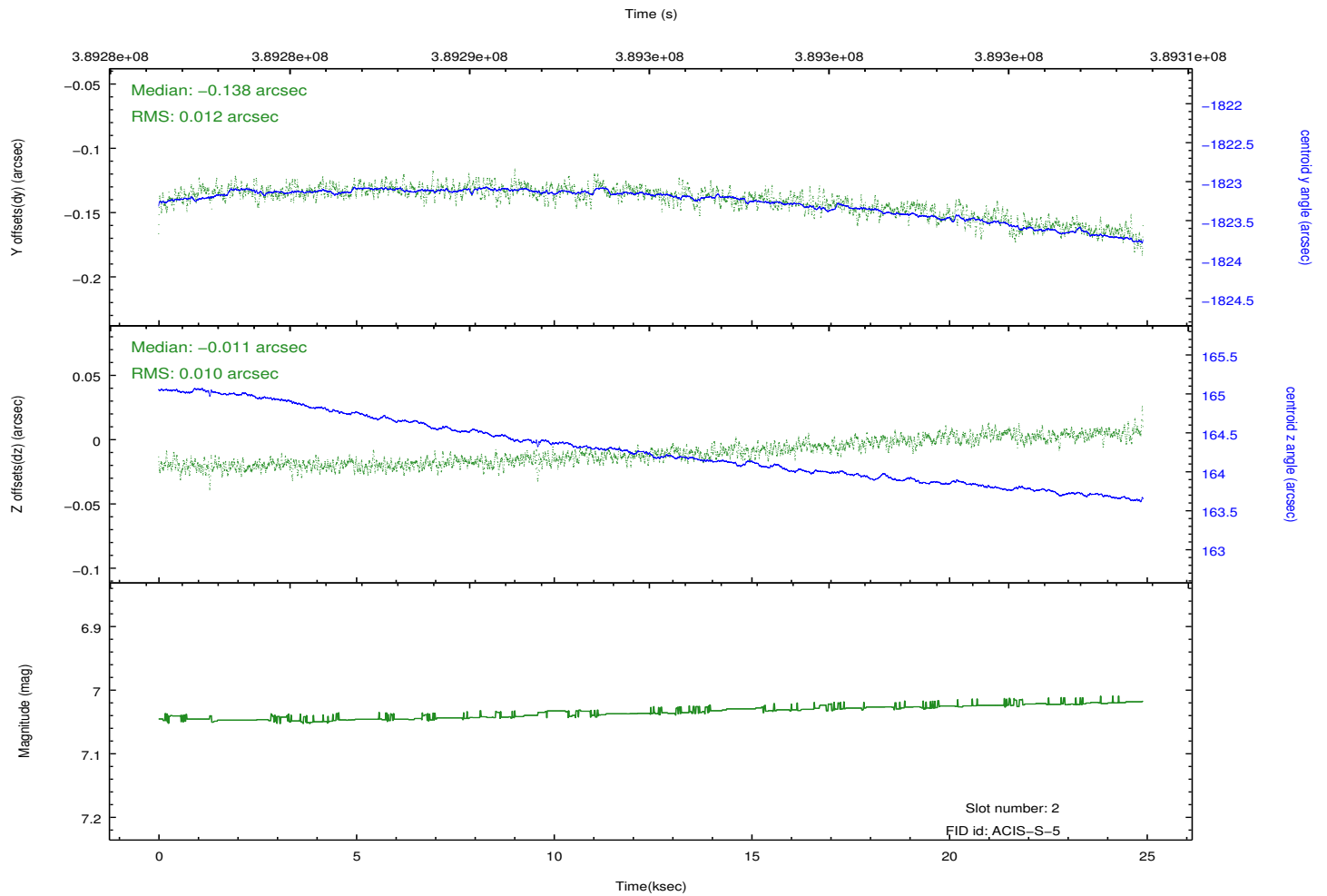
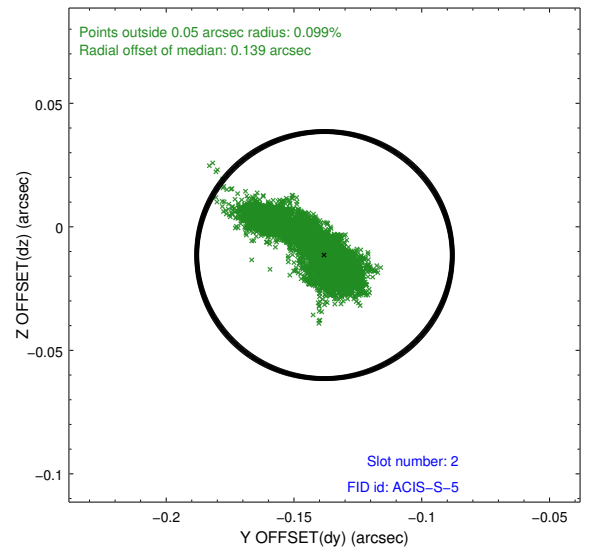
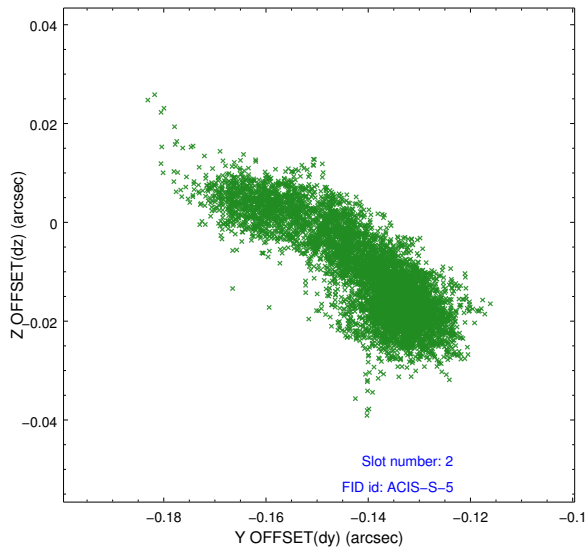
### 2.5.1 Slot 0



## 2.5.2 Slot 1



### 2.5.3 Slot 2



# A Summary

## A.1 Status

V&V Scientist	Jen Lauer
V&V Date (YYYY-MM-DD)	2012.07.02
V&V Edition	1
V&V Disposition and Status	OK
V&V Charge Time	24.8930001

## A.2 Comments