

V&V Reference Report

L2 ASCDS Version : 8.4.5

Observation 12002 - L2 Version 2
Chandra X-Ray Center

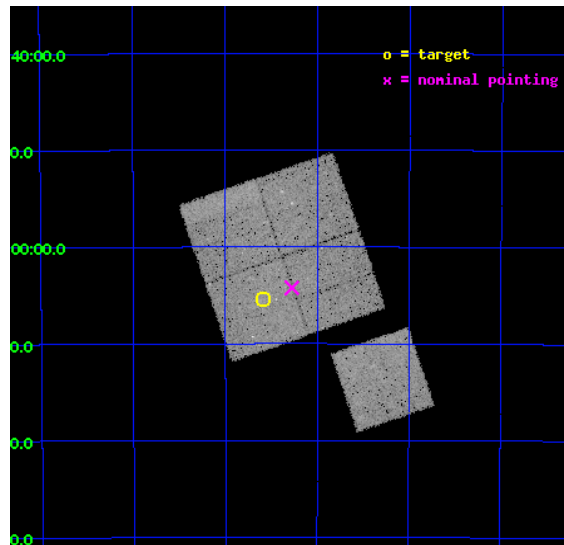
L2 Processing Date : Jun 29 2012

Contents

1	Front	2
2	OBI	3
2.1	OBI	3
2.1.1	Images	3
2.1.2	Bias	3
2.1.3	Parameters	4
2.1.4	Events	4
2.2	Compared Parameters	5
2.3	Aspect	6
2.4	Star Slots	9
2.4.1	Slot 3	9
2.4.2	Slot 4	10
2.4.3	Slot 5	11
2.4.4	Slot 6	12
2.4.5	Slot 7	13
2.5	FID Slots	14
2.5.1	Slot 0	14
2.5.2	Slot 1	15
2.5.3	Slot 2	16
A	Summary	17
A.1	Status	17
A.2	Comments	17

1 Front

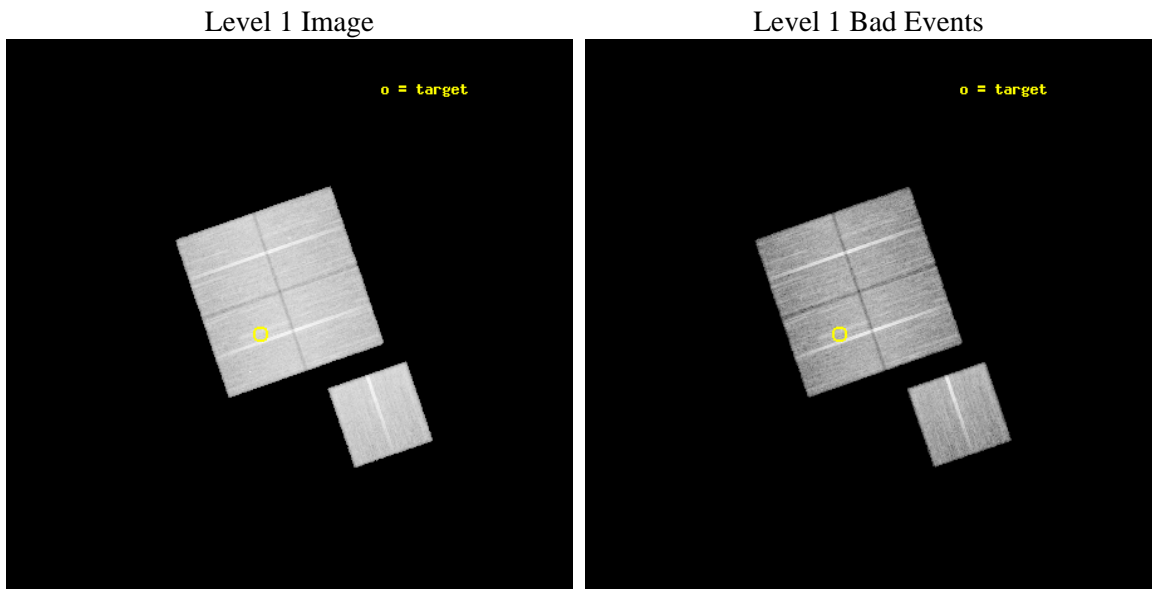
seq_num	800888	Sequence number
obs_id	12002	Observation id
title	Chandra Observations of a Complete Sample of SZE Selected Galaxy Clusters	Proposal title
observer	Dr Joseph Mohr	Principal investigator
object	SPT-CL 0534-5005	Source name
dtcycle	0	
cycle	P	events from which exps? Prim/Second/Both
ra_targ	83.397917	Observer's specified target RA [deg]
dec_targ	-50.09	Observer's specified target Dec [deg]
ra_nom	83.318749875922	Nominal RA [deg]
dec_nom	-50.070535847163	Nominal Dec [deg]
roll_nom	161.03717482142	Nominal Roll [deg]
revision	2	Processing version of data
ontime	27766.659243286	Sum of GTIs [s]
livetime	27403.867398755	Livetime [s]
ontime0	27763.518253028	Sum of GTIs [s]
ontime1	27766.65920341	Sum of GTIs [s]
ontime2	27766.659243166	Sum of GTIs [s]
ontime3	27766.659243286	Sum of GTIs [s]
ontime6	27769.800213575	Sum of GTIs [s]
l2events	95493	Number of level 2 events



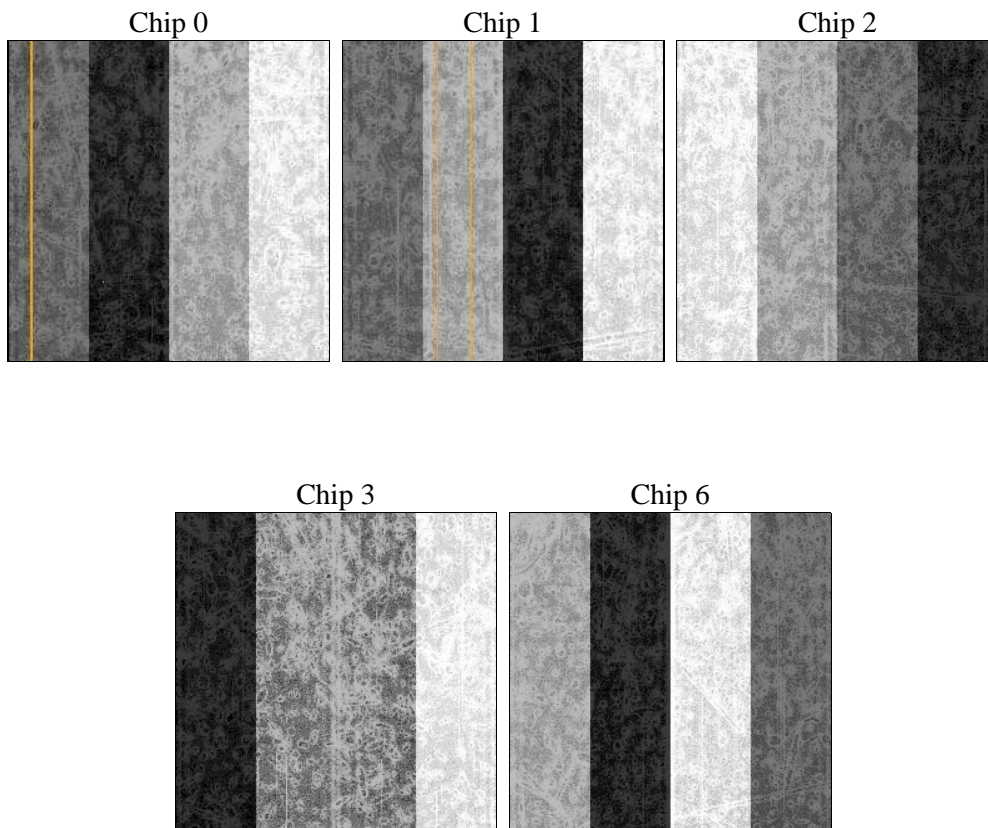
2 OBI

2.1 OBI

2.1.1 Images



2.1.2 Bias



2.1.3 Parameters

obi_num	2	Obi number	sched_exp_time	28000.000000	[s] Scheduled observation exposure time
ascdsver	8.4.5	Processing system revision	ontime	27766.659243286	Sum of GTIs [s]
caldsver	4.5.0	 	ontime0	27763.518253028	Sum of GTIs [s]
date	2012-06-29T11:54:15	Date and time of file creation	ontime1	27766.65920341	Sum of GTIs [s]
revision	2	Processing version of data	ontime2	27766.659243166	Sum of GTIs [s]
			ontime3	27766.659243286	Sum of GTIs [s]
			ontime6	27769.800213575	Sum of GTIs [s]
			l1events	1004156	Number of level 1 events

2.1.4 Events

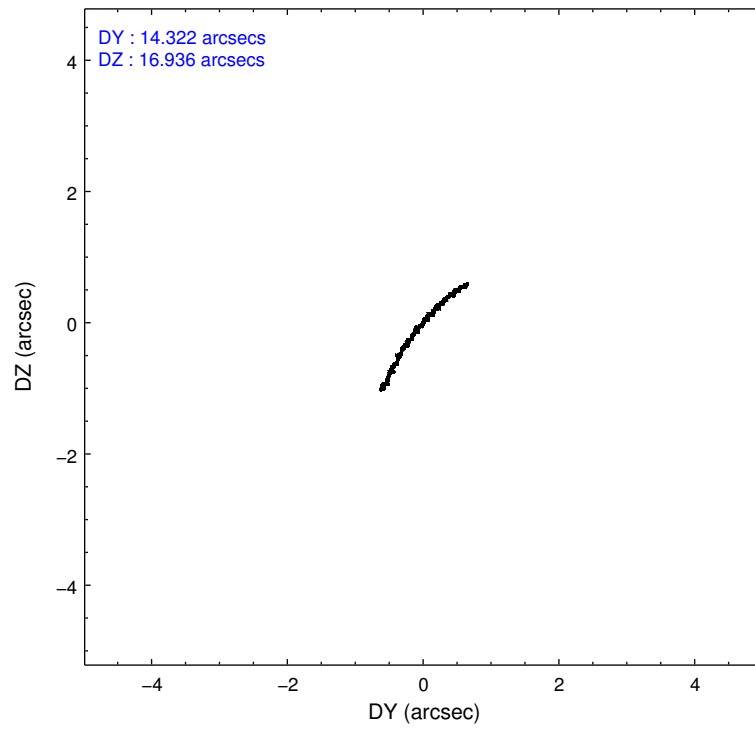
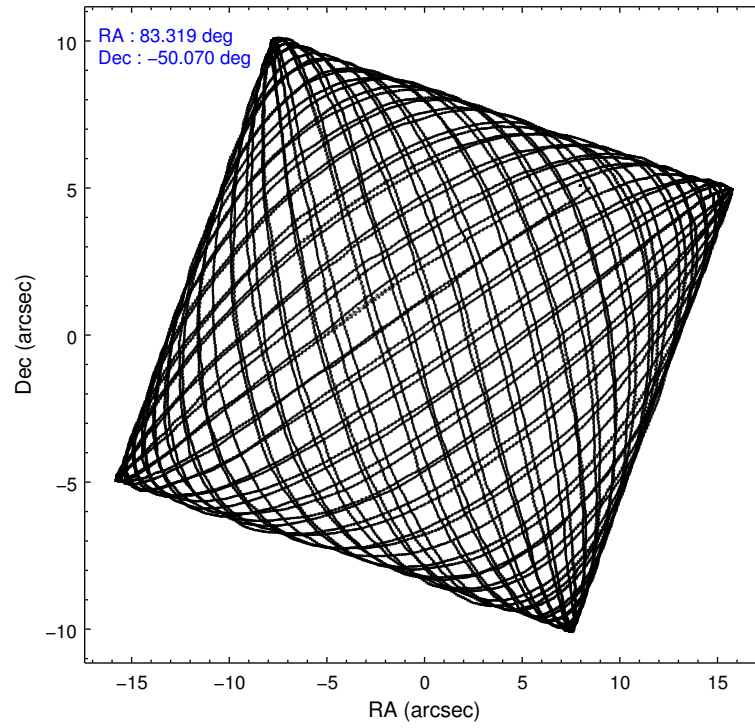
	ccd 0	ccd 1	ccd 2	ccd 3	ccd 6
level 1 events	190676	194177	205432	206901	206970
rejected events	168103	169302	183518	185181	183702
rejected %	88%	87%	89%	89%	88%

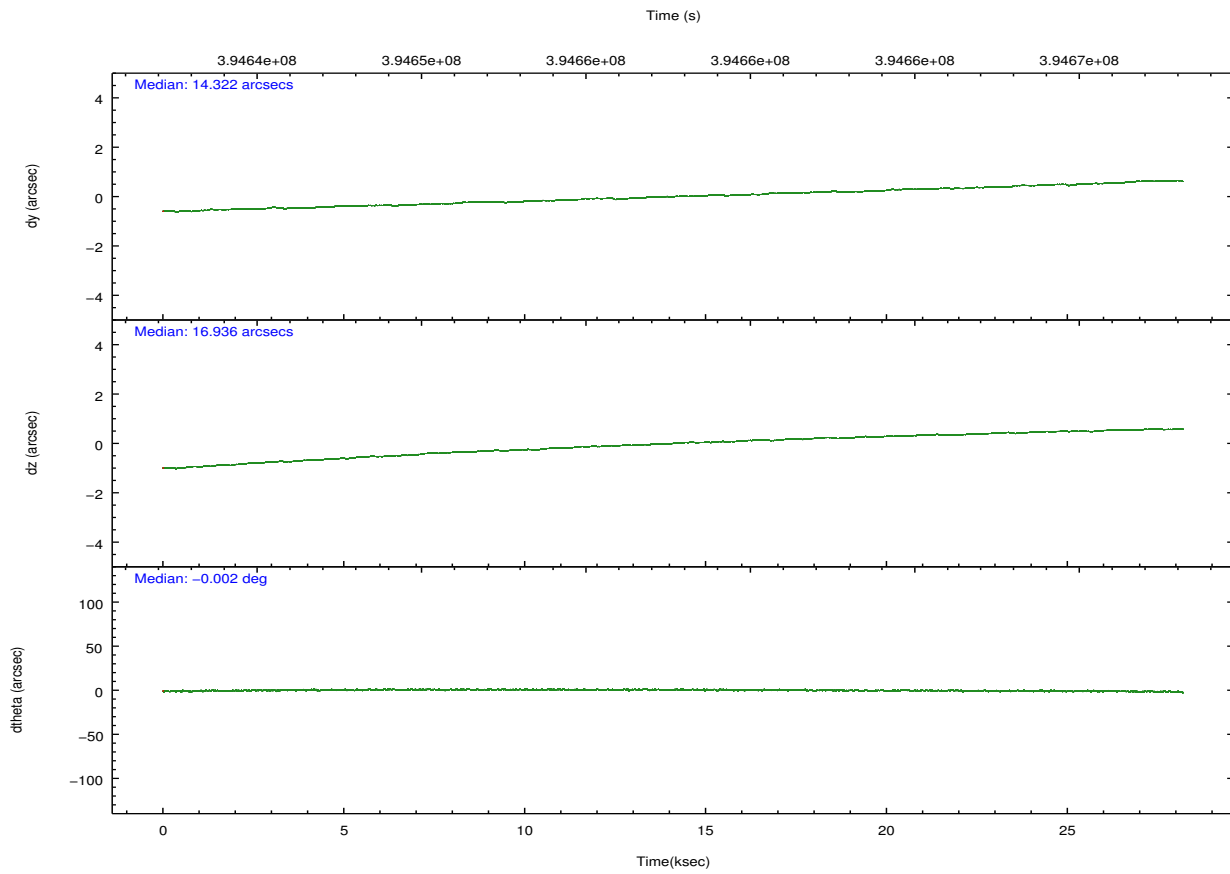
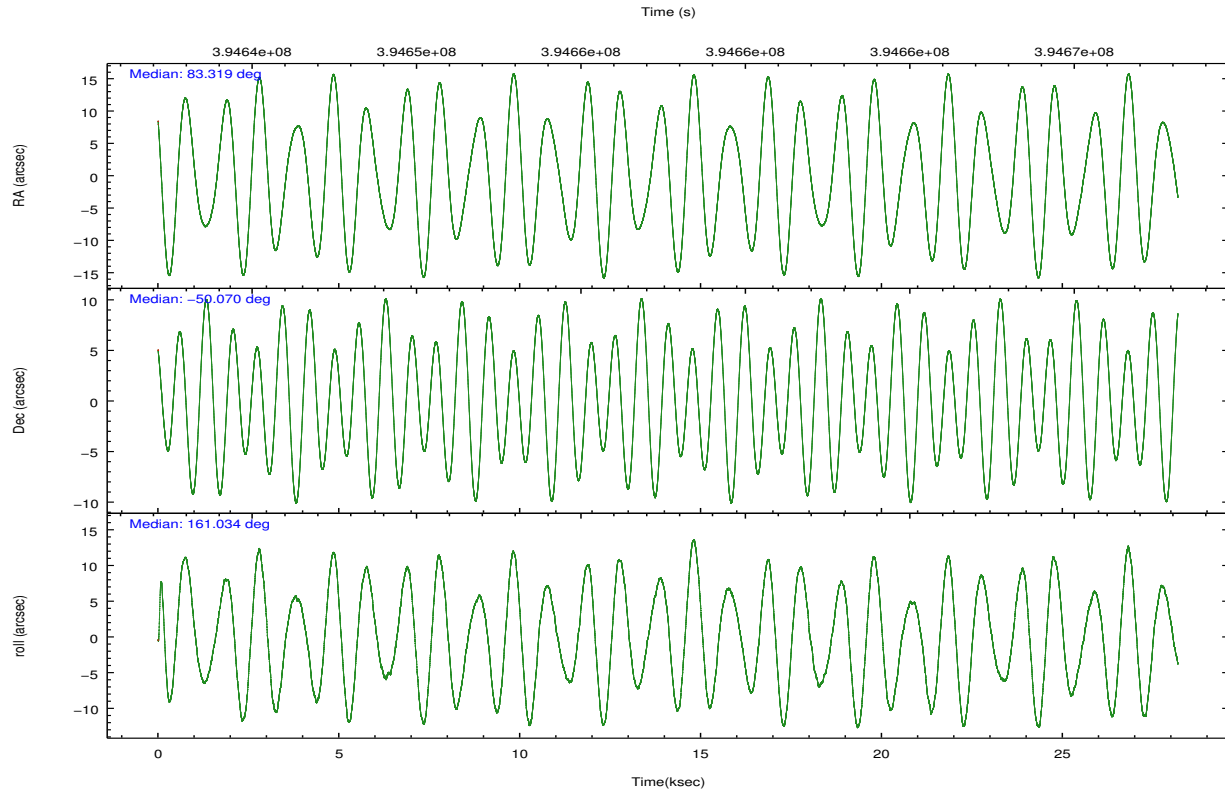
	ccd 0	ccd 1	ccd 2	ccd 3	ccd 6
grade 0 events	7767	8827	7945	7846	8191
	4%	4%	3%	3%	3%
grade 1 events	95	101	117	128	118
	0%	0%	0%	0%	0%
grade 2 events	5576	5747	5229	4773	5160
	2%	2%	2%	2%	2%
grade 3 events	2509	2556	2246	2292	2467
	1%	1%	1%	1%	1%
grade 4 events	2279	2595	2393	2365	2432
	1%	1%	1%	1%	1%
grade 5 events	8249	8919	8225	9415	9266
	4%	4%	4%	4%	4%
grade 6 events	4444	5155	4106	4449	5029
	2%	2%	1%	2%	2%
grade 7 events	159757	160277	175171	175633	174307
	83%	82%	85%	84%	84%

2.2 Compared Parameters

Parameter	Planned	Actual	Parameter	Planned	Actual
Instrument	ACIS	ACIS	Obspar format version number	7	7
Detector	ACIS-01236	ACIS-01236	Obspar file type	PREDICTED	ACTUAL
Grating	NONE	NONE	Obspar update status	NONE	UPDATED
Data mode	VFAINT	VFAINT	CCD I0 on	Y	Y
Observation mode	POINTING	POINTING	CCD I1 on	Y	Y
[deg] Pointing RA	83.360766	83.31874987592246	CCD I2 on	Y	Y
[deg] Pointing Dec	-50.065156	-50.07053584716304	CCD I3 on	Y	Y
[deg] Pointing Roll	160.860718	161.0371748214183	CCD S0 on	N	N
[mm] SIM focus pos	-0.782348	-0.7809083437167272	CCD S1 on	N	N
[mm] SIM defocus	0	0.001439871863259334	CCD S2 on	O1	Y
[mm] SIM translation stage pos	-225.840463	-225.8433433320239	CCD S3 on	N	N
[mm] SIM translation stage offset	-7.752	-7.749109670905796	CCD S4 on	N	N
[s] Observation start time (MET)	394643747.184000	394643274.4971	CCD S5 on	N	N
Observation start date	2010-07-04T15:14:41	2010-07-04T15:07:54	Number of optional ACIS chips dropped	0	0
[s] Observation end time (MET)	394671747.184000	394672377.32359	On-chip summing requested	N	N
Observation end date	2010-07-04T23:01:21	2010-07-04T23:12:57	Subarray requested	NONE	NONE
Read mode	TIMED	TIMED	Alternating exposures requested	N	N
			[s] Primary exposure time	0.000000	3.1

2.3 Aspect



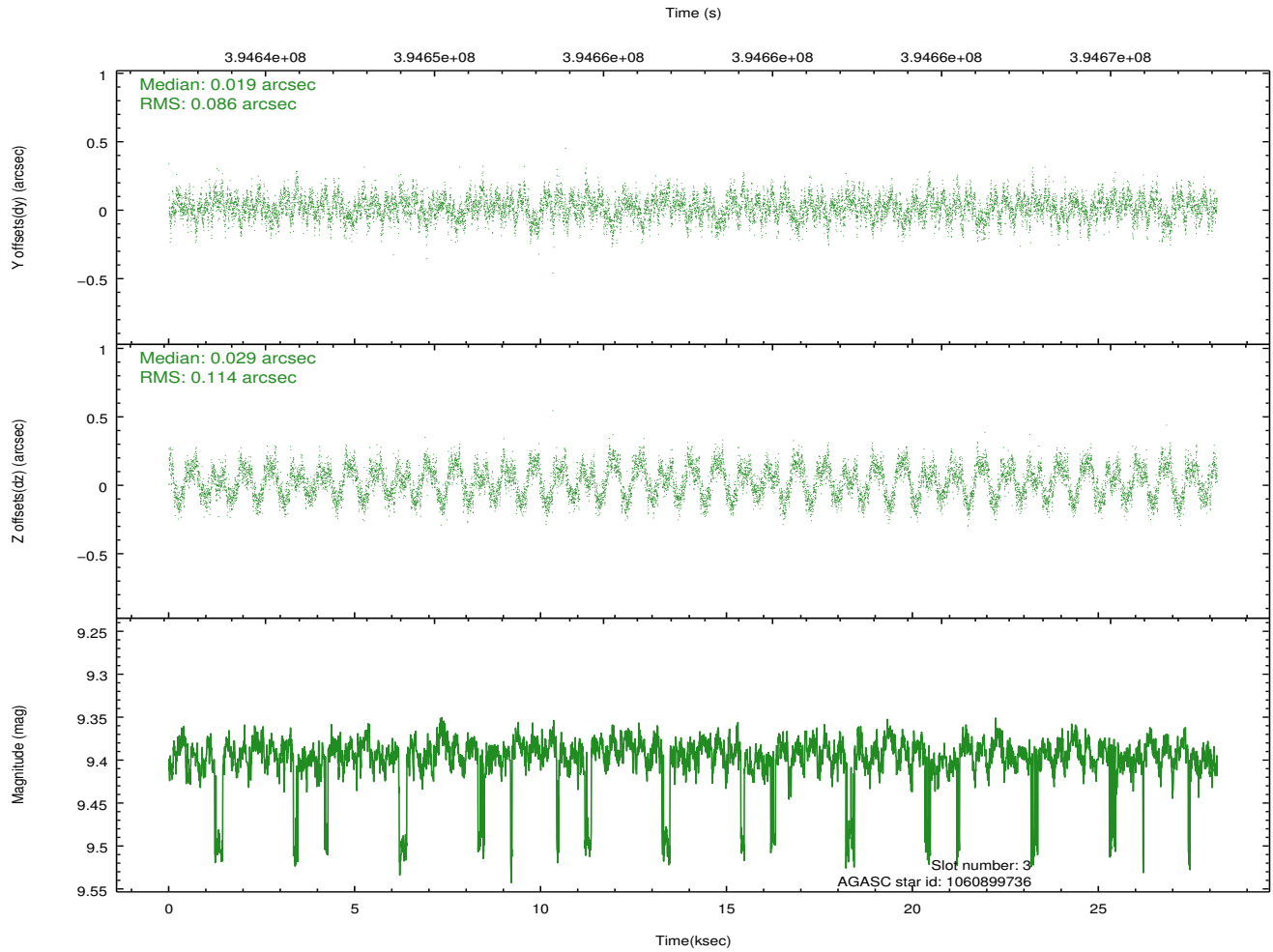
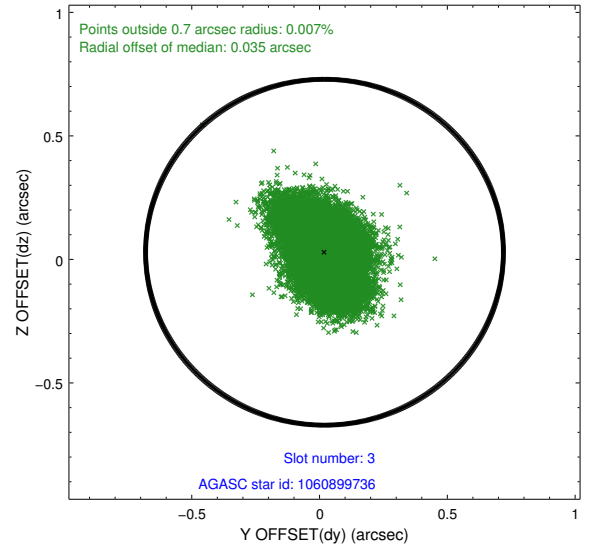
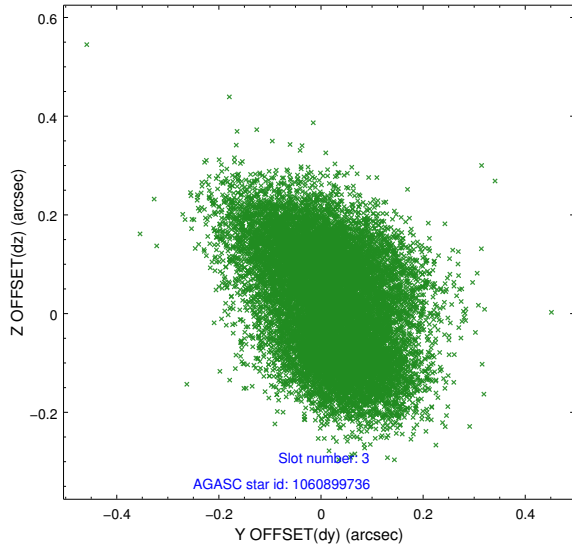


Slot Statistics

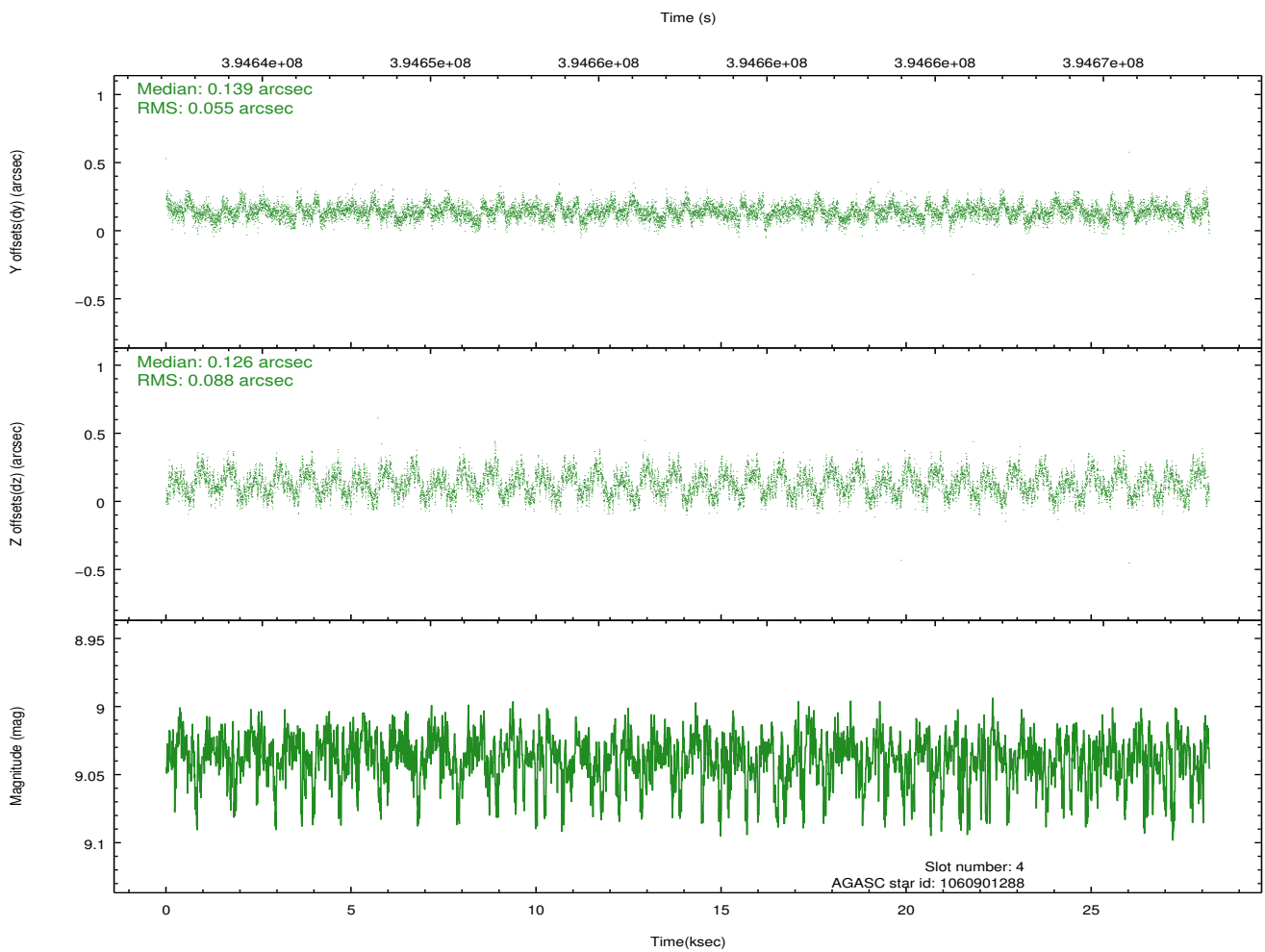
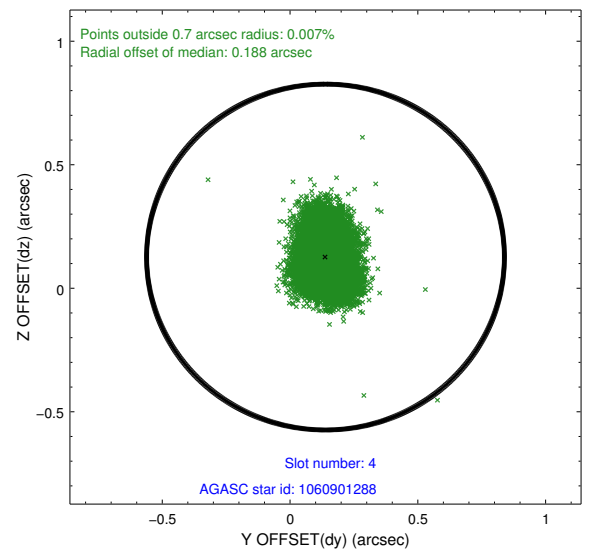
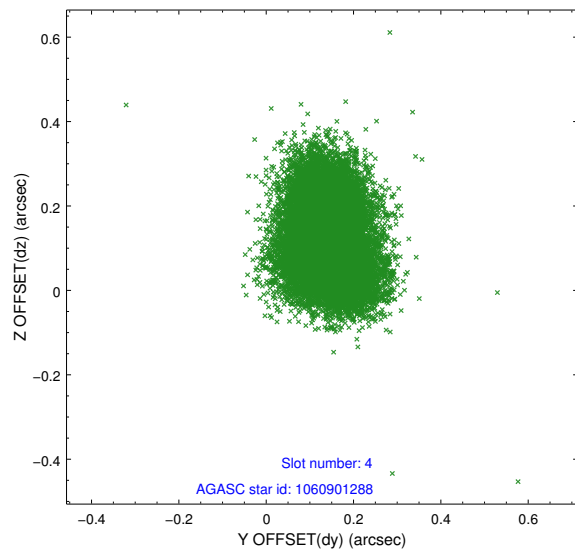
slot	status	id	mag	n_pts	med_dy	med_dz	dr1	dr2	ra	dec	mean_y	mean_z
0	FID	ACIS-I-1	7.01	6875	0.146	-0.093	0.010	0.017	0.000000	0.000000	925.15	-999.69
1	FID	ACIS-I-5	6.99	6876	-0.295	0.122	0.010	0.019	0.000000	0.000000	-1823.34	897.96
2	FID	ACIS-I-6	7.01	6876	0.059	0.042	0.011	0.020	0.000000	0.000000	390.53	1542.48
3	GUIDE	1060899736	9.39	13684	0.019	0.029	0.154	0.239	82.882261	-49.324117	1934.82	-2148.43
4	GUIDE	1060901288	9.04	13743	0.139	0.126	0.112	0.176	83.960474	-49.702888	-892.76	-1684.56
5	GUIDE	1060903184	9.05	13666	0.127	0.198	0.095	0.154	84.153090	-49.579220	-1176.43	-2250.05
6	GUIDE	1060906784	7.85	13742	-0.078	-0.203	0.070	0.117	82.890088	-50.064904	1026.22	358.82
7	GUIDE	1060906824	7.03	13748	-0.208	-0.145	0.069	0.104	82.626321	-50.099887	1558.62	682.11

2.4 Star Slots

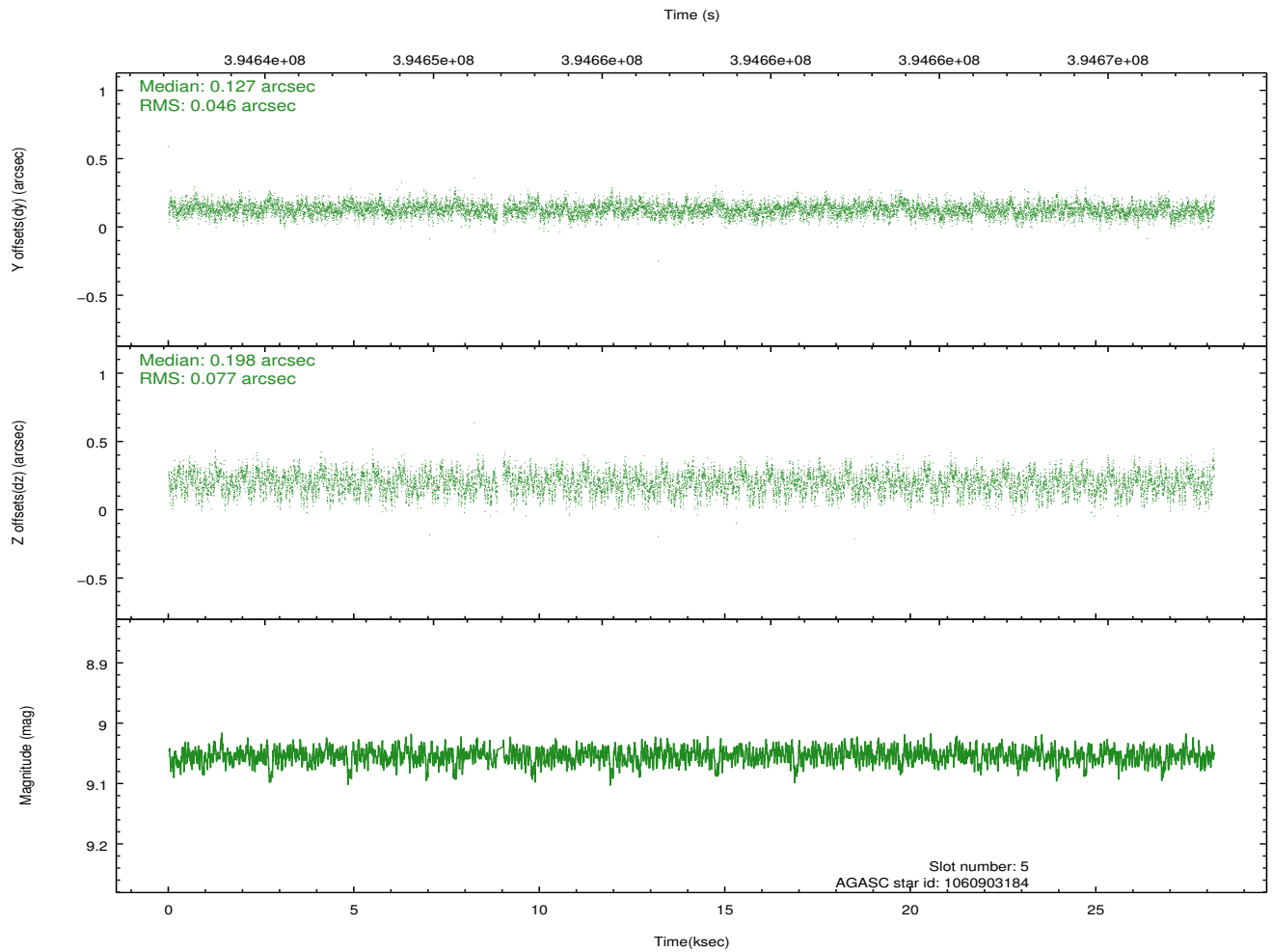
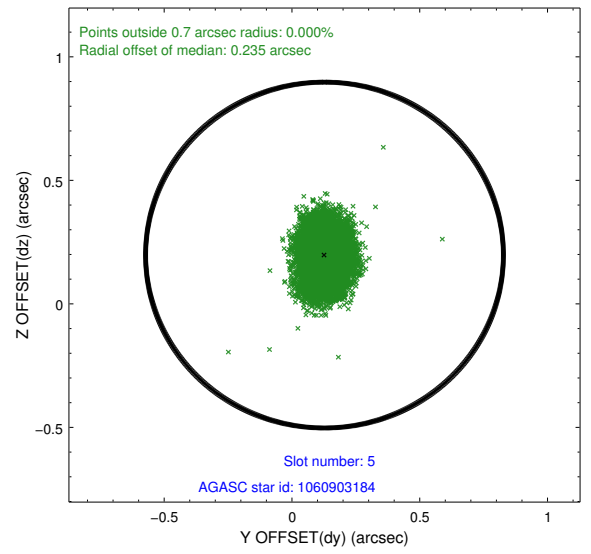
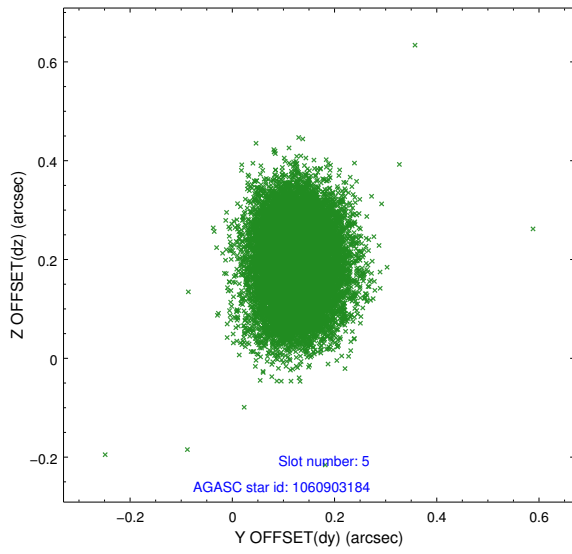
2.4.1 Slot 3



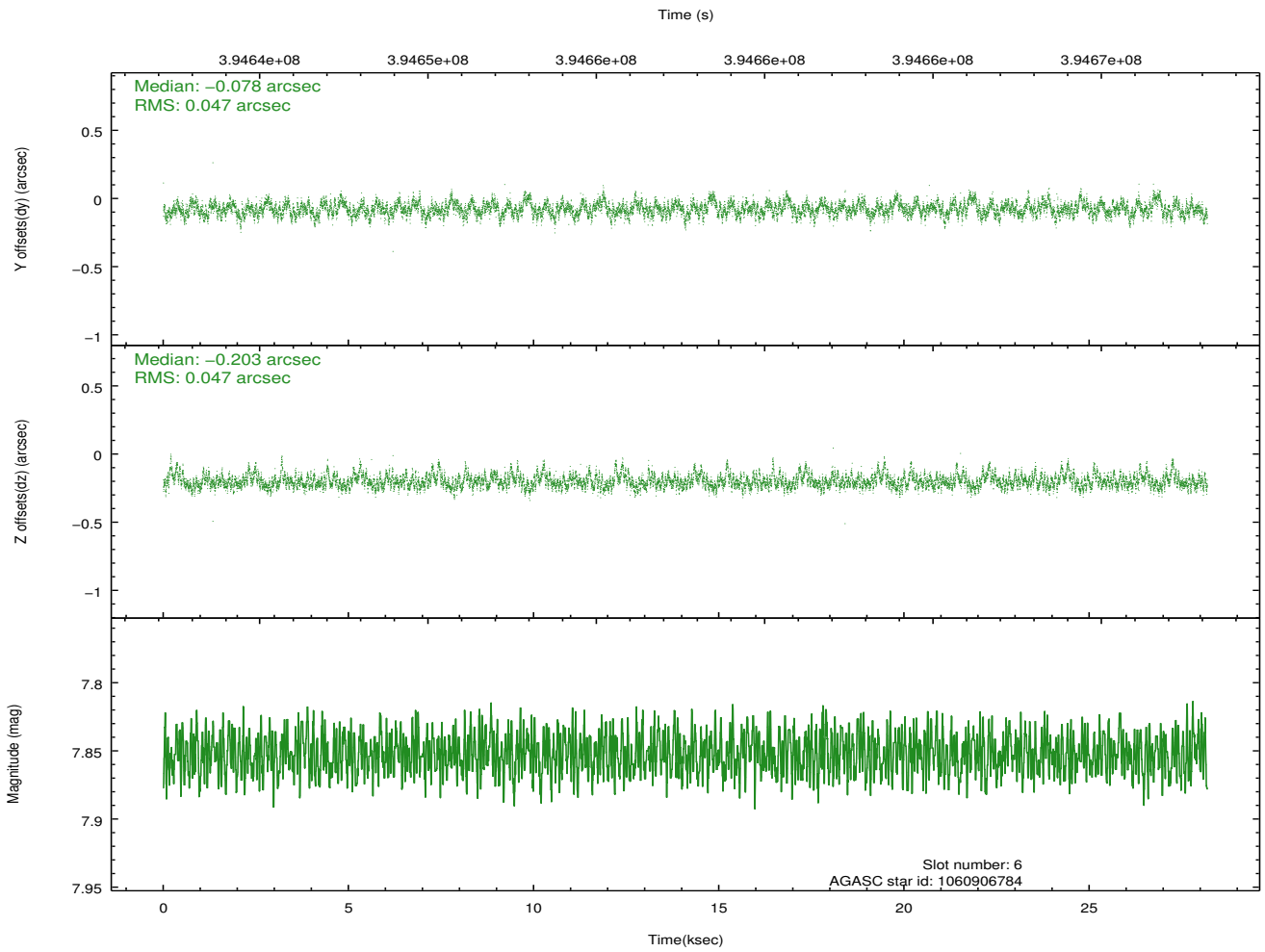
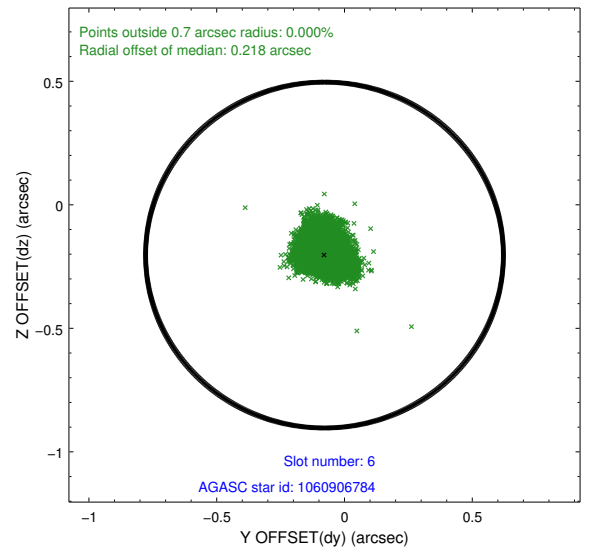
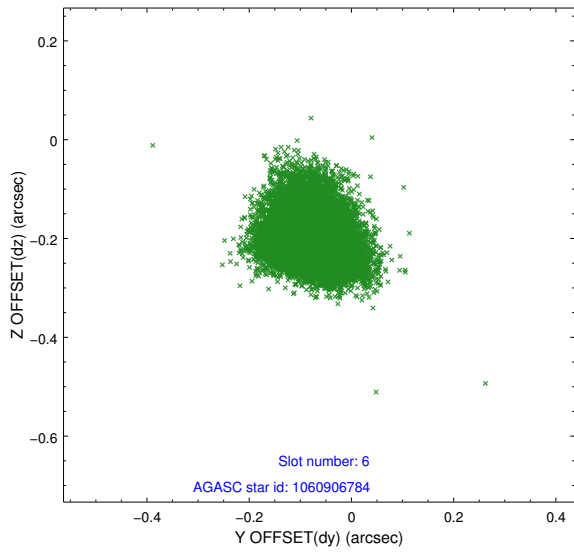
2.4.2 Slot 4



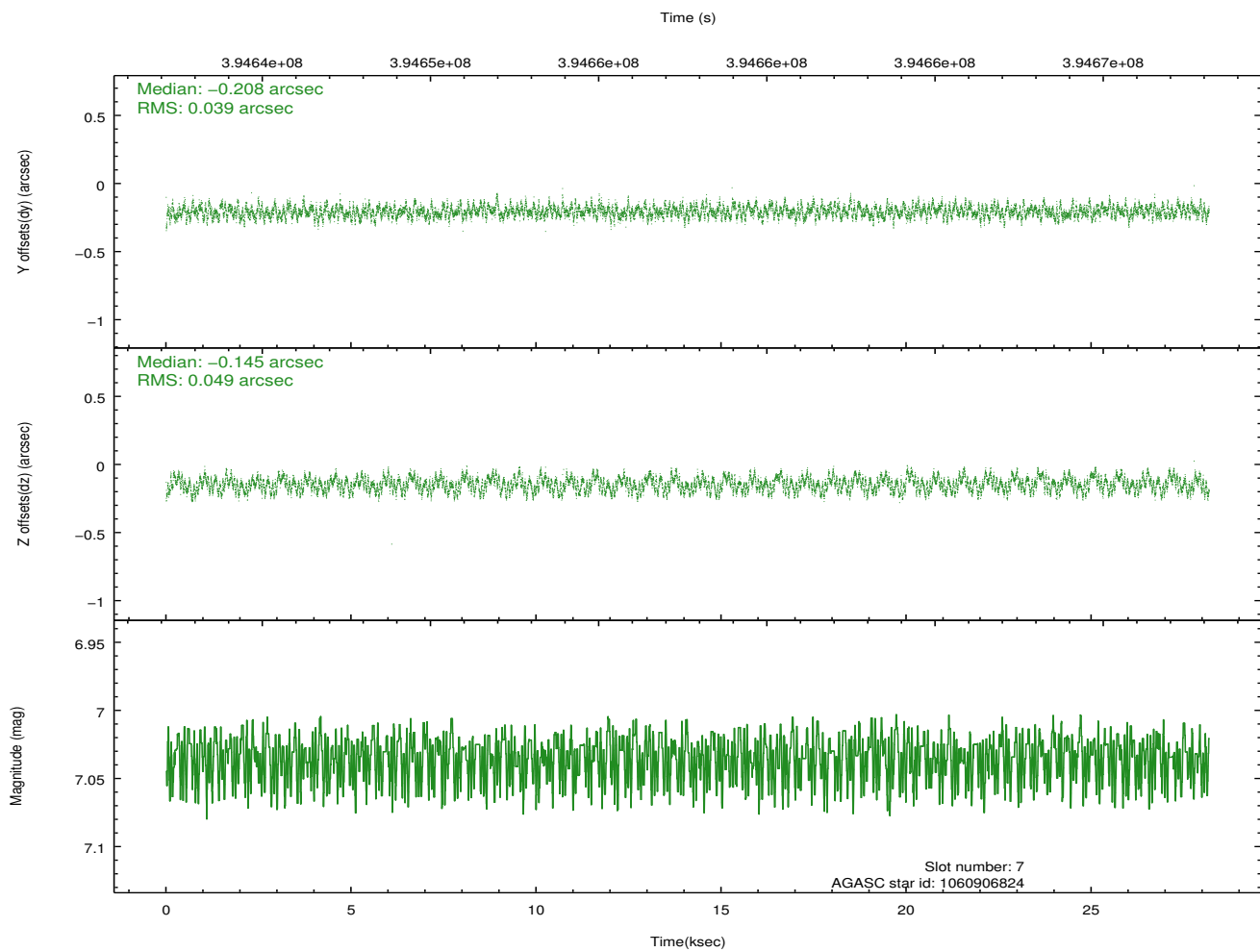
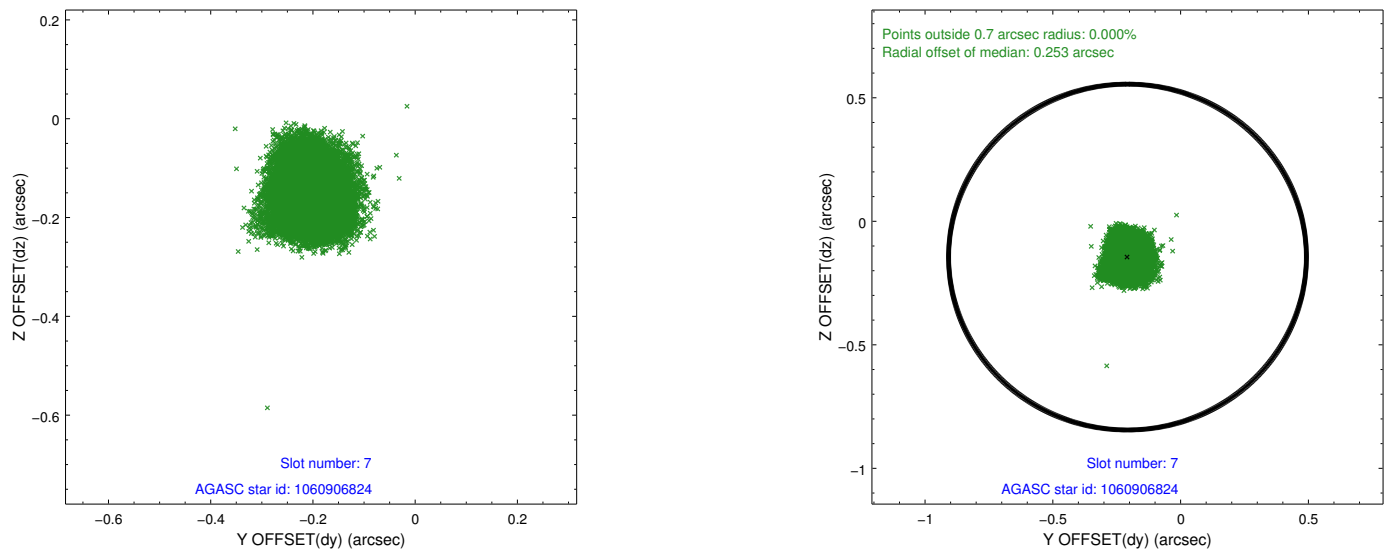
2.4.3 Slot 5



2.4.4 Slot 6

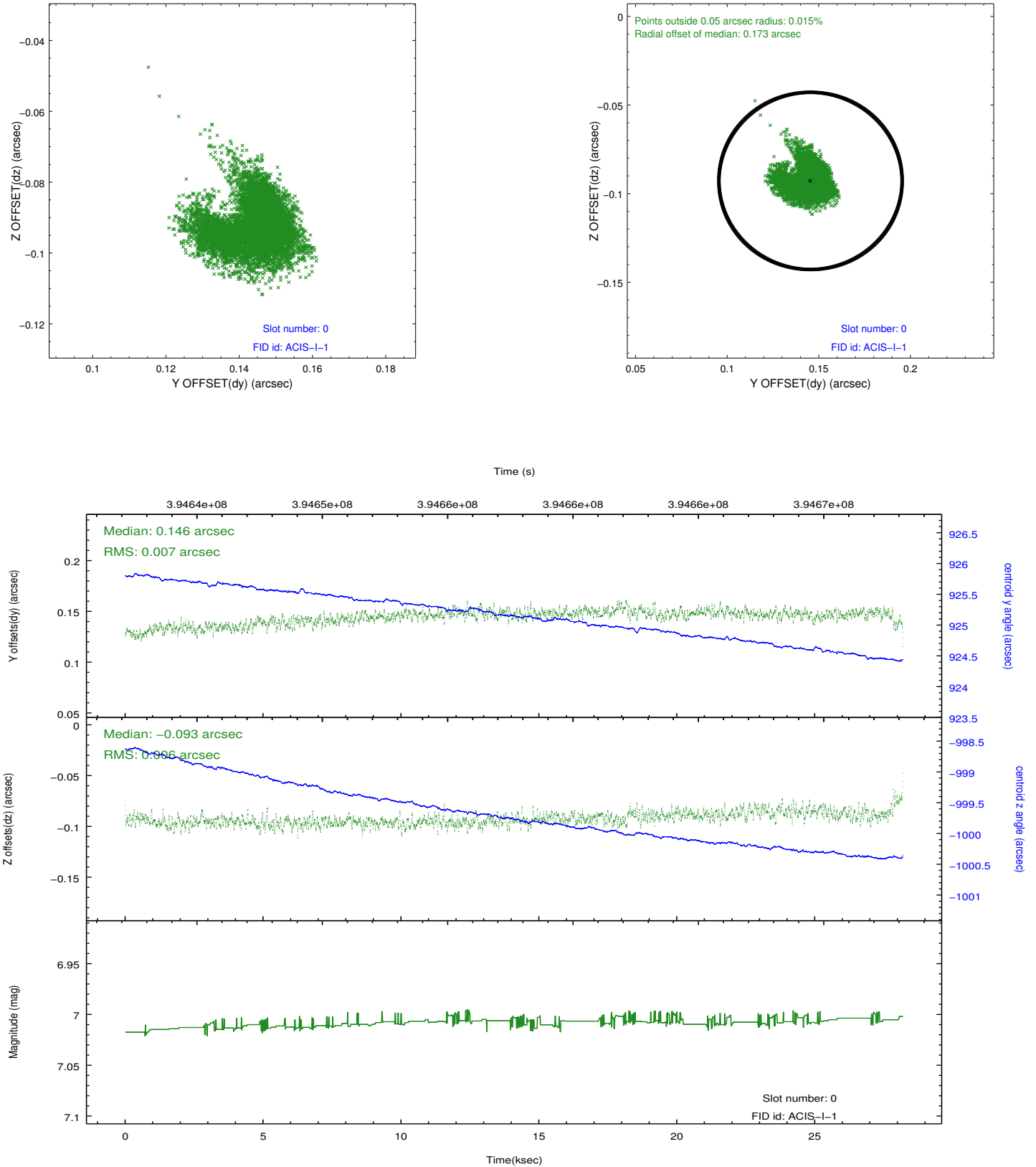


2.4.5 Slot 7

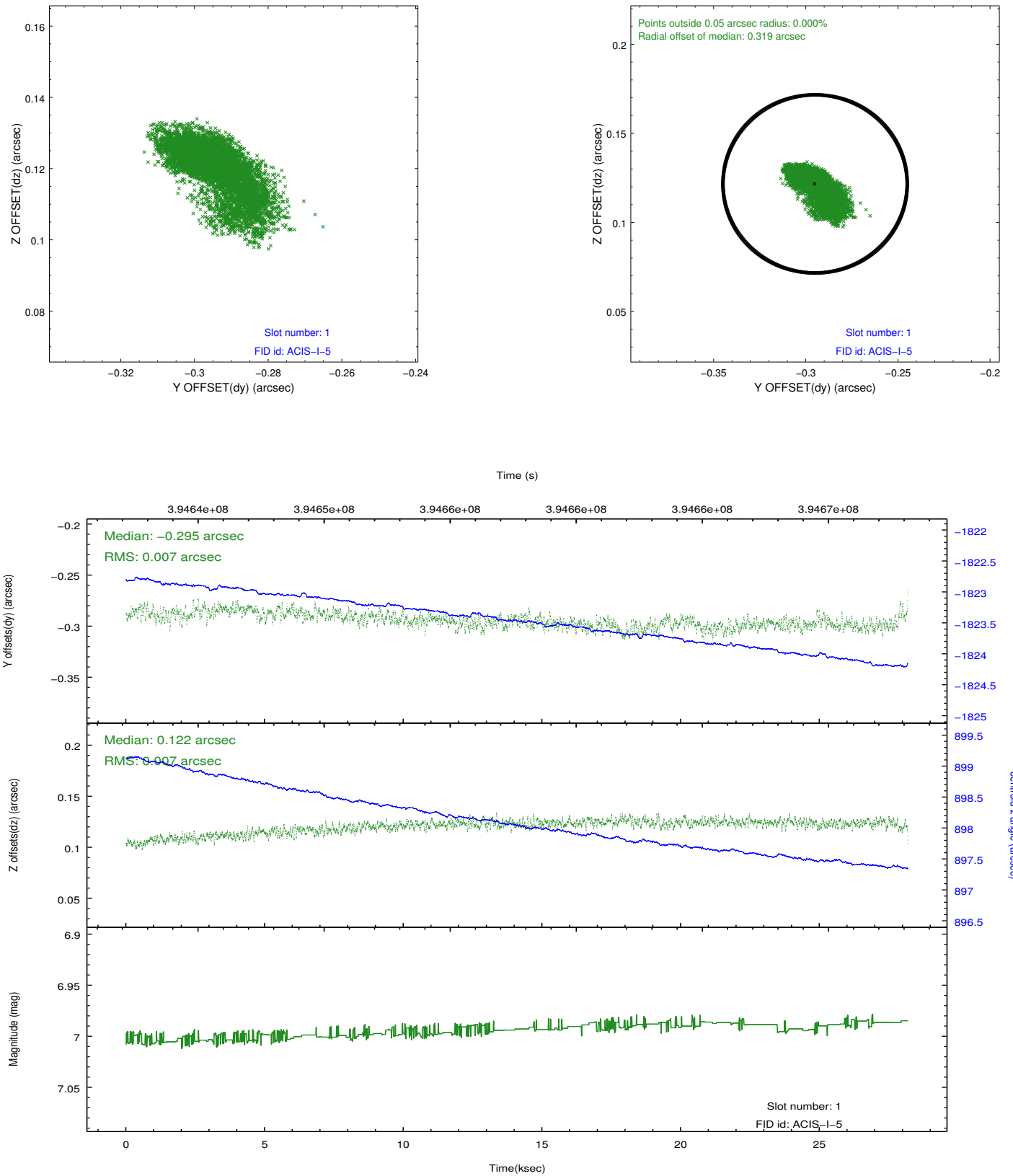


2.5 FID Slots

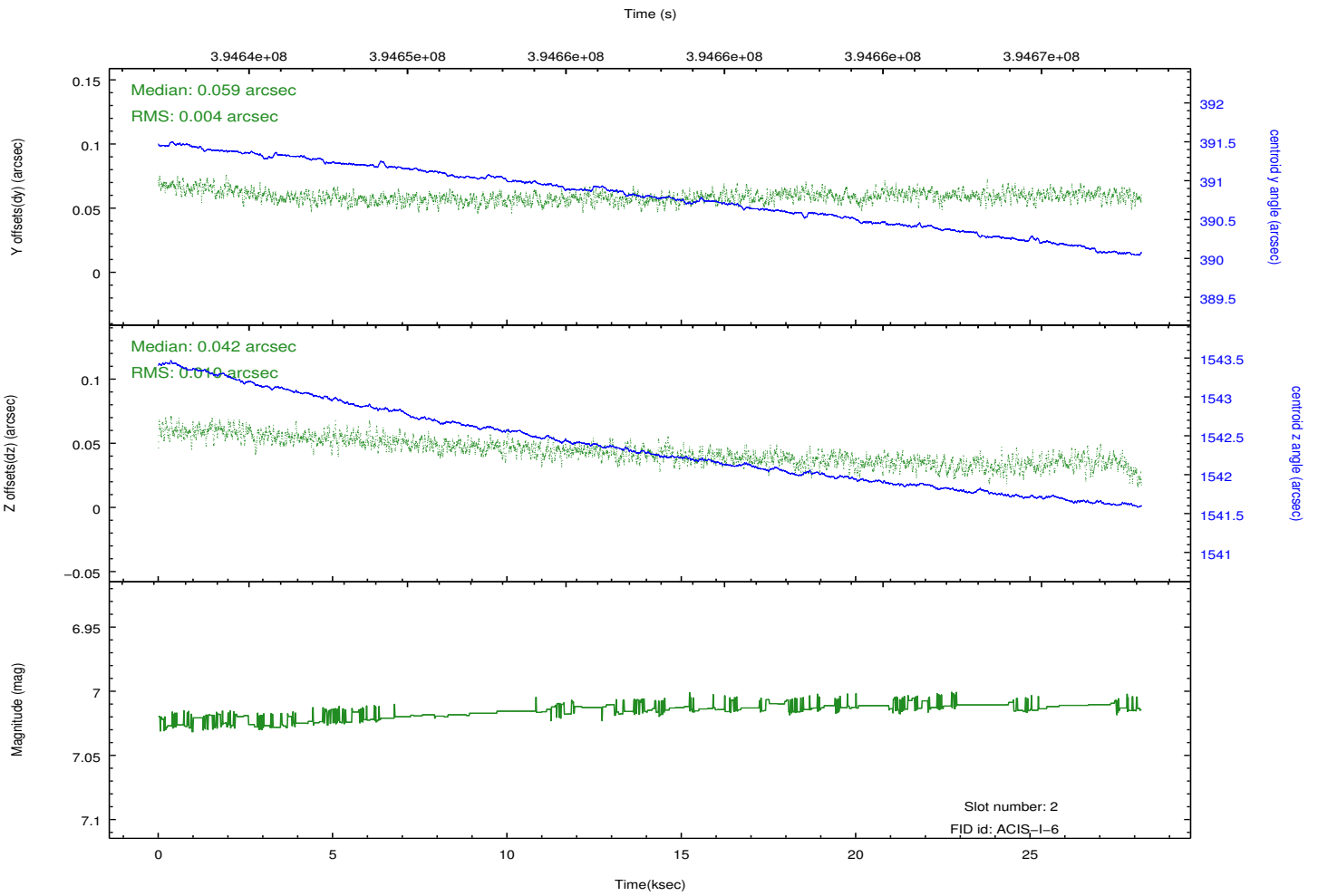
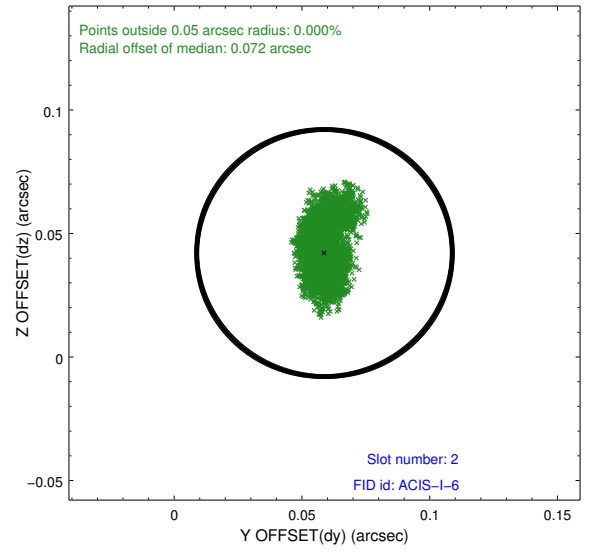
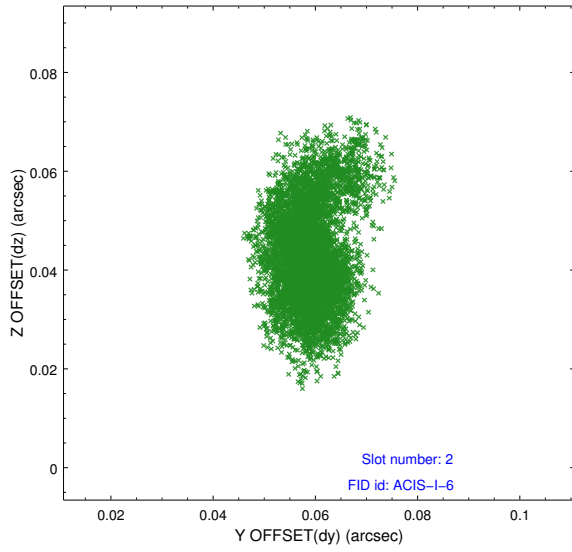
2.5.1 Slot 0



2.5.2 Slot 1



2.5.3 Slot 2



A Summary

A.1 Status

V&V Scientist	Jen Lauer
V&V Date (YYYY-MM-DD)	2012.07.06
V&V Edition	1
V&V Disposition and Status	OK
V&V Charge Time	27.766659243226

A.2 Comments