

V&V Reference Report

L2 ASCDS Version : 8.4.5

Observation 12112 - L2 Version 2
Chandra X-Ray Center

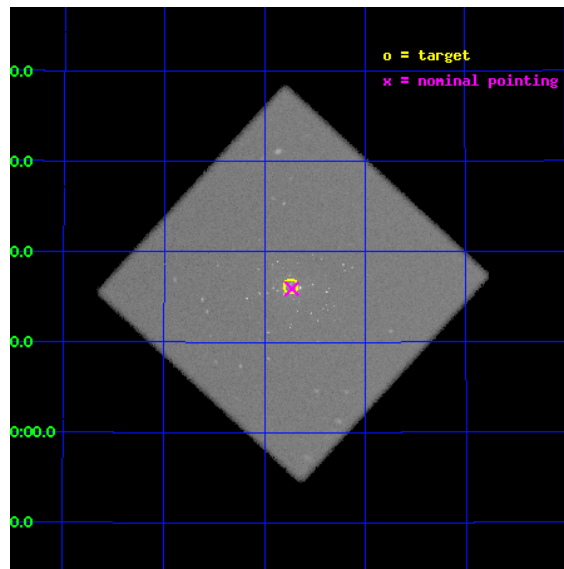
L2 Processing Date : Jul 7 2012

Contents

1	Front	2
2	OBI	3
2.1	OBI	3
2.1.1	Images	3
2.1.2	Parameters	4
2.1.3	Events	4
2.2	Compared Parameters	5
2.3	Aspect	6
2.4	Star Slots	9
2.4.1	Slot 3	9
2.4.2	Slot 4	10
2.4.3	Slot 5	11
2.4.4	Slot 6	12
2.4.5	Slot 7	13
2.5	FID Slots	14
2.5.1	Slot 0	14
2.5.2	Slot 1	15
2.5.3	Slot 2	16
A	Summary	17
A.1	Status	17
A.2	Comments	17

1 Front

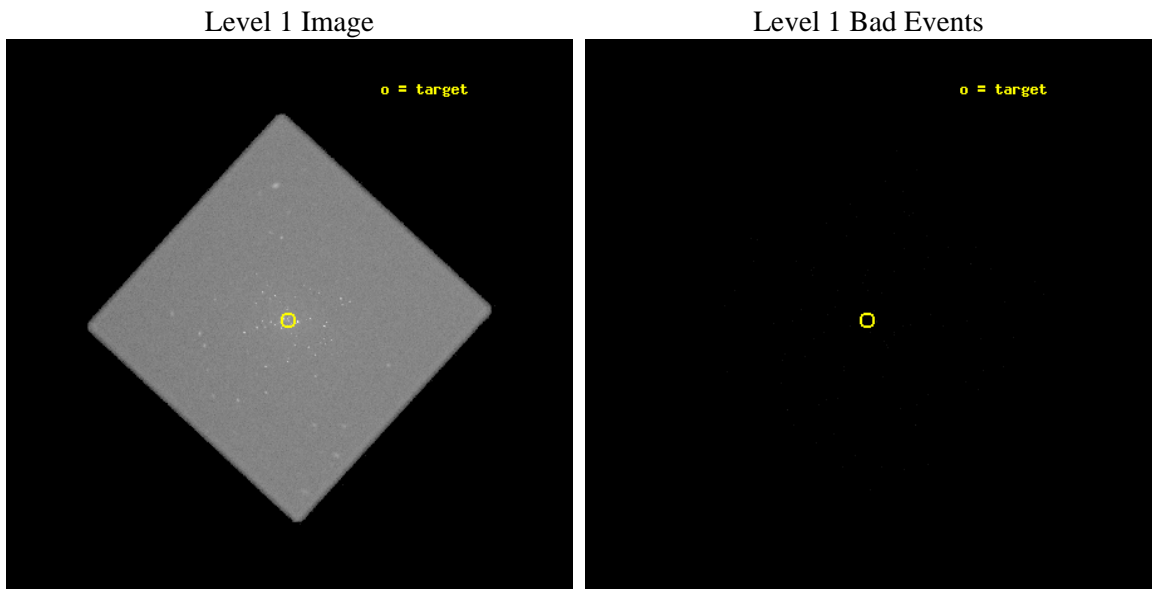
seq_num	300280	Sequence number
obs_id	12112	Observation id
title	Resolving short supersoft source states of optical novae in the core of M31	Proposal title
observer	Dr. Wolfgang Pietsch	Principal investigator
object	M31	Source name
ra_targ	10.684583	Observer's specified target RA [deg]
dec_targ	41.269278	Observer's specified target Dec [deg]
ra_nom	10.682301183339	Nominal RA [deg]
dec_nom	41.265310146919	Nominal Dec [deg]
roll_nom	267.64409664207	Nominal Roll [deg]
revision	2	Processing version of data
ontime	20163.032289624	[s]
livetime	19944.396994655	Ontime multiplied by DTCOR
l2events	1502199	Number of level 2 events



2 OBI

2.1 OBI

2.1.1 Images



2.1.2 Parameters

obi_num	0	Obi number	sched_exp_time	20000.000000	[s] Scheduled observation exposure time
ascdsver	8.4.5	Processing system revision	ontime	20163.032289624	[s]
caldbver	4.5.0	 	l1events	2207887	Number of level 1 events
date	2012-07-07T17:27:30	Date and time of file creation			
revision	2	Processing version of data			

2.1.3 Events

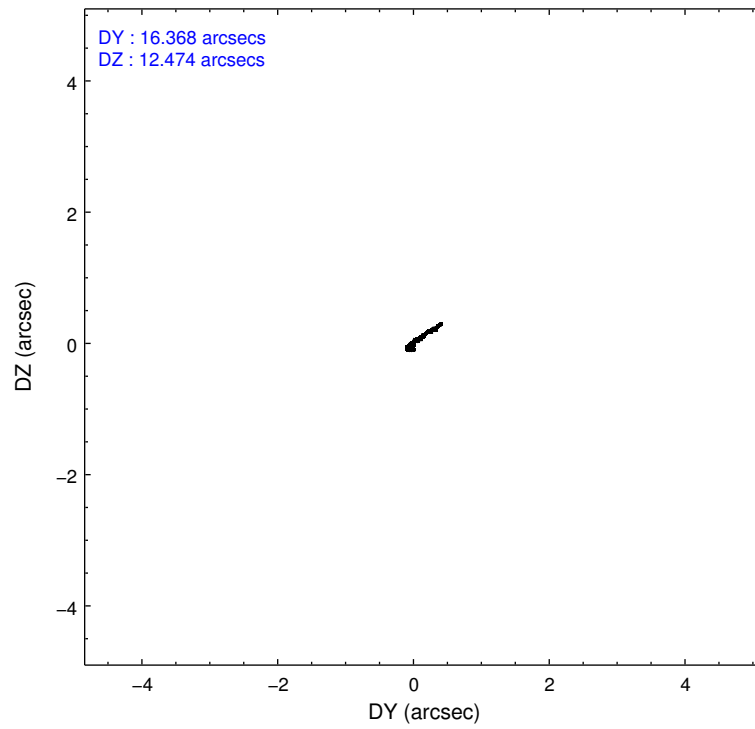
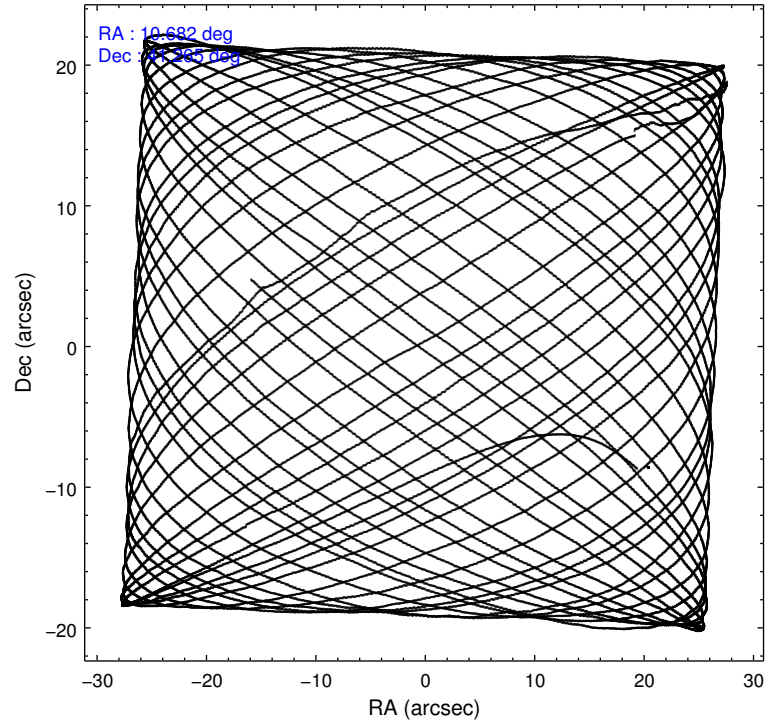
Level 1 Events

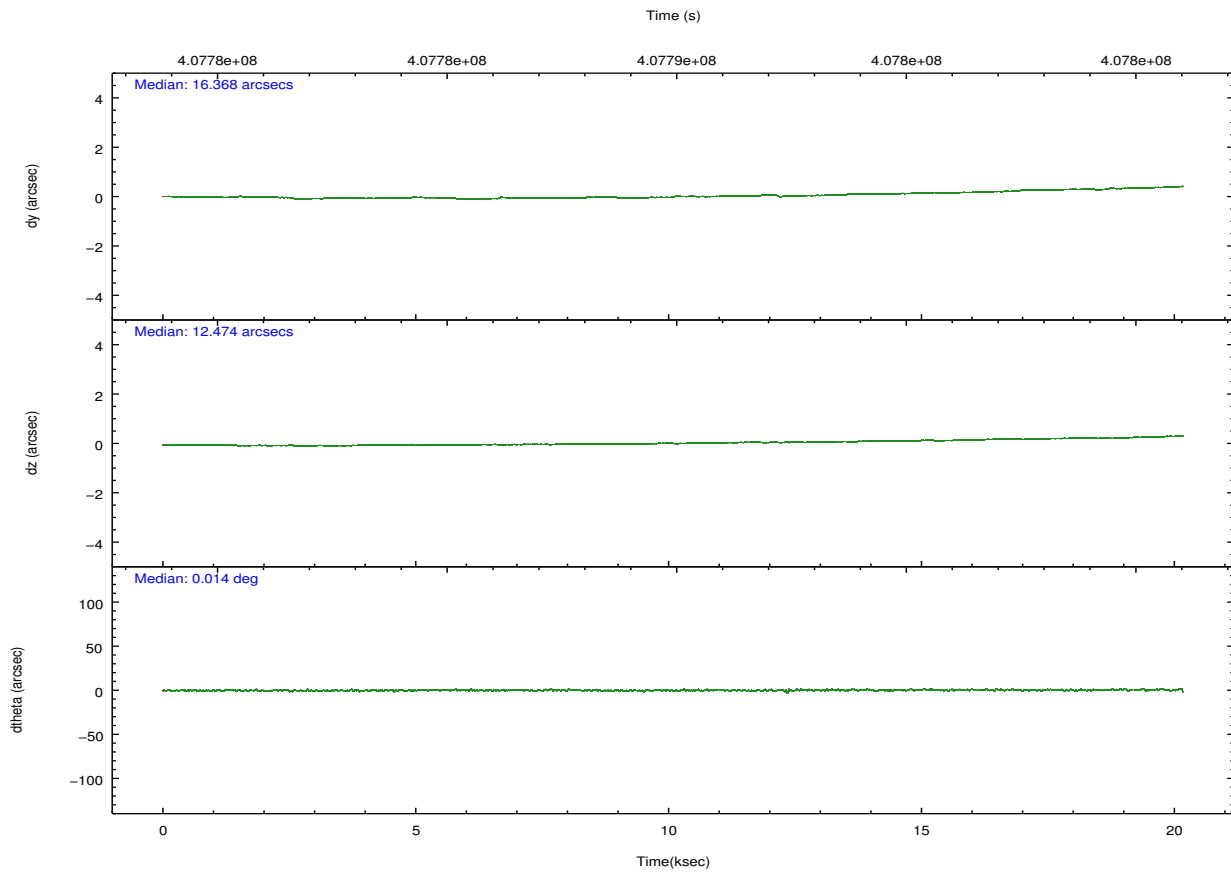
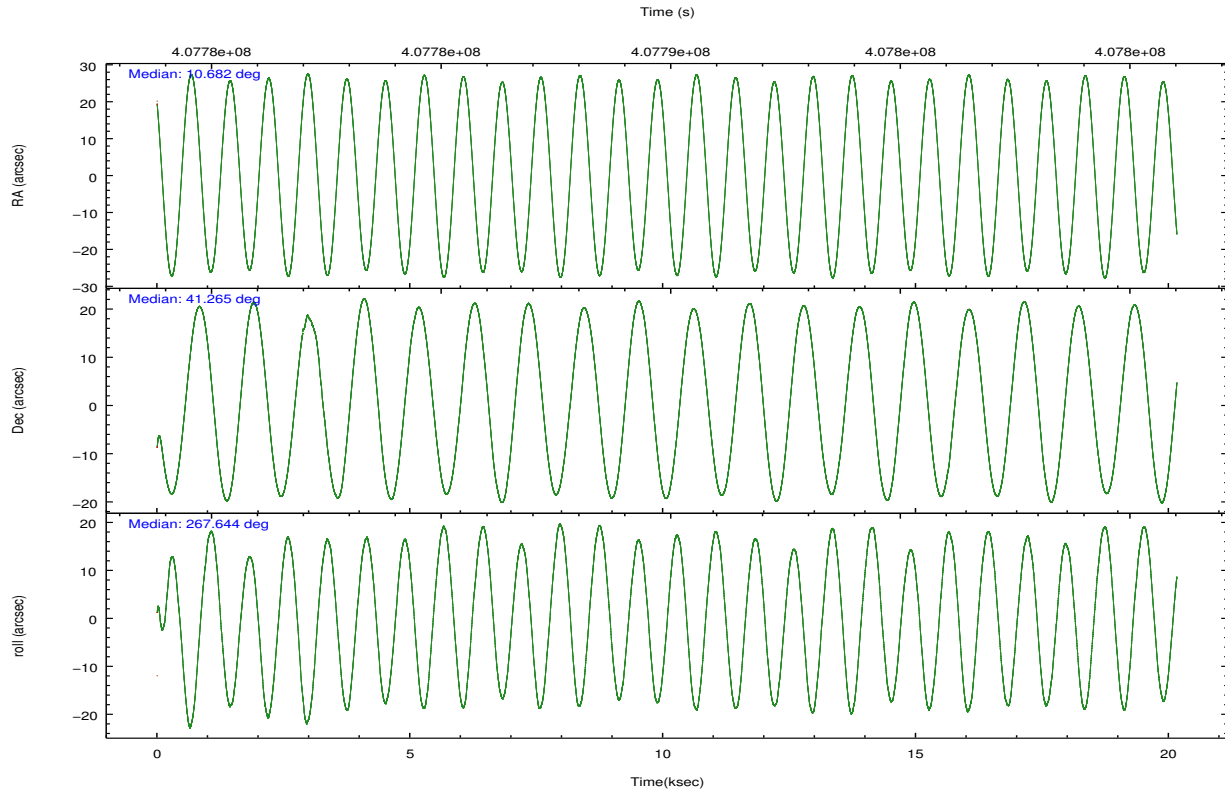
	segment 0
level 1 events	2207887
rejected events	103302
rejected %	4%

2.2 Compared Parameters

Parameter	Planned	Actual	Parameter	Planned	Actual
Instrument	HRC	HRC	Obspar format version number	7	7
Detector	HRC-I	HRC-I	Obspar file type	PREDICTED	ACTUAL
Grating	NONE	NONE	Obspar update status	NONE	UPDATED
Data mode	OBSERVING	OBSERVING			
Observation mode	POINTING	POINTING			
[deg] Pointing RA	10.664765	10.68230118333933			
[deg] Pointing Dec	41.289209	41.26531014691925			
[deg] Pointing Roll	267.751144	267.6440966420661			
[mm] SIM focus pos	-1.040293	-1.038866356238299			
[mm] SIM defocus	0	0.001426264420575141			
[mm] SIM translation stage pos	126.985494	126.9829799899862			
[mm] SIM translation stage offset	0	0.002508901615314585			
[s] Observation start time (MET)	407780010.184000	407778859.78374			
Observation start date	2010-12-03T16:12:24	2010-12-03T15:54:19			
[s] Observation end time (MET)	407800010.184000	407800502.14736			
Observation end date	2010-12-03T21:45:44	2010-12-03T21:55:02			

2.3 Aspect



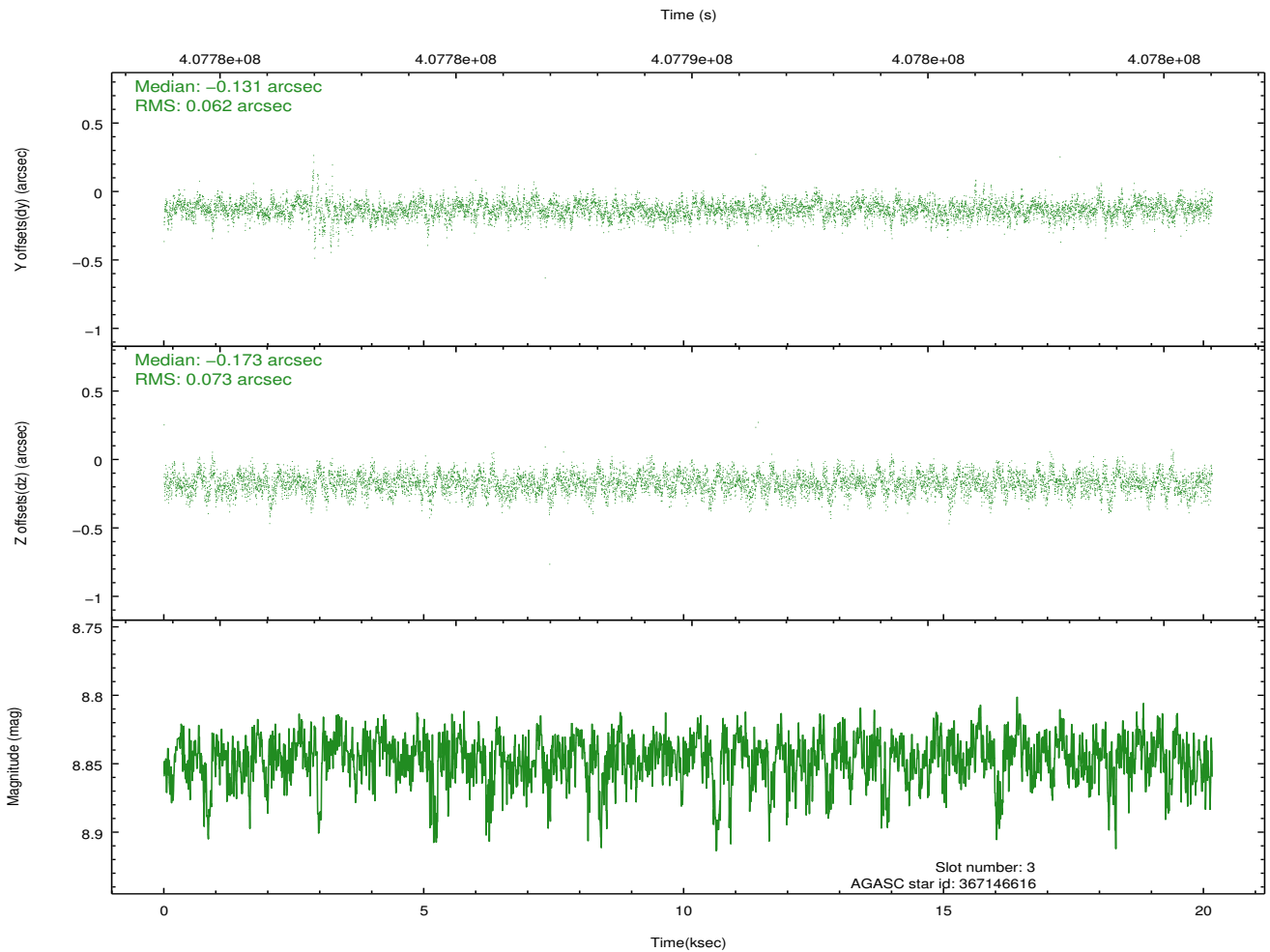
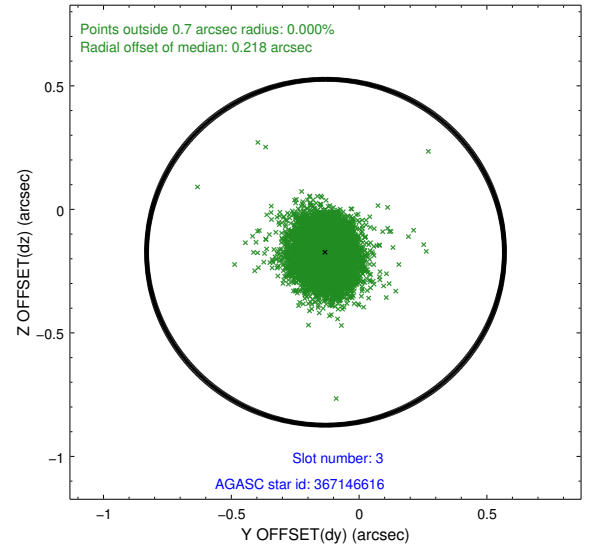
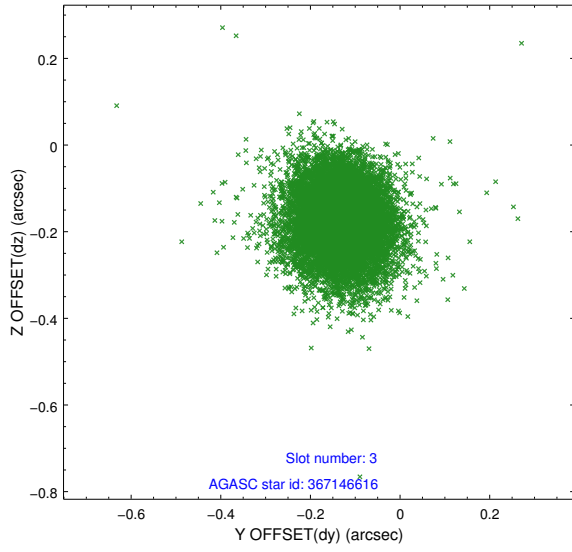


Slot Statistics

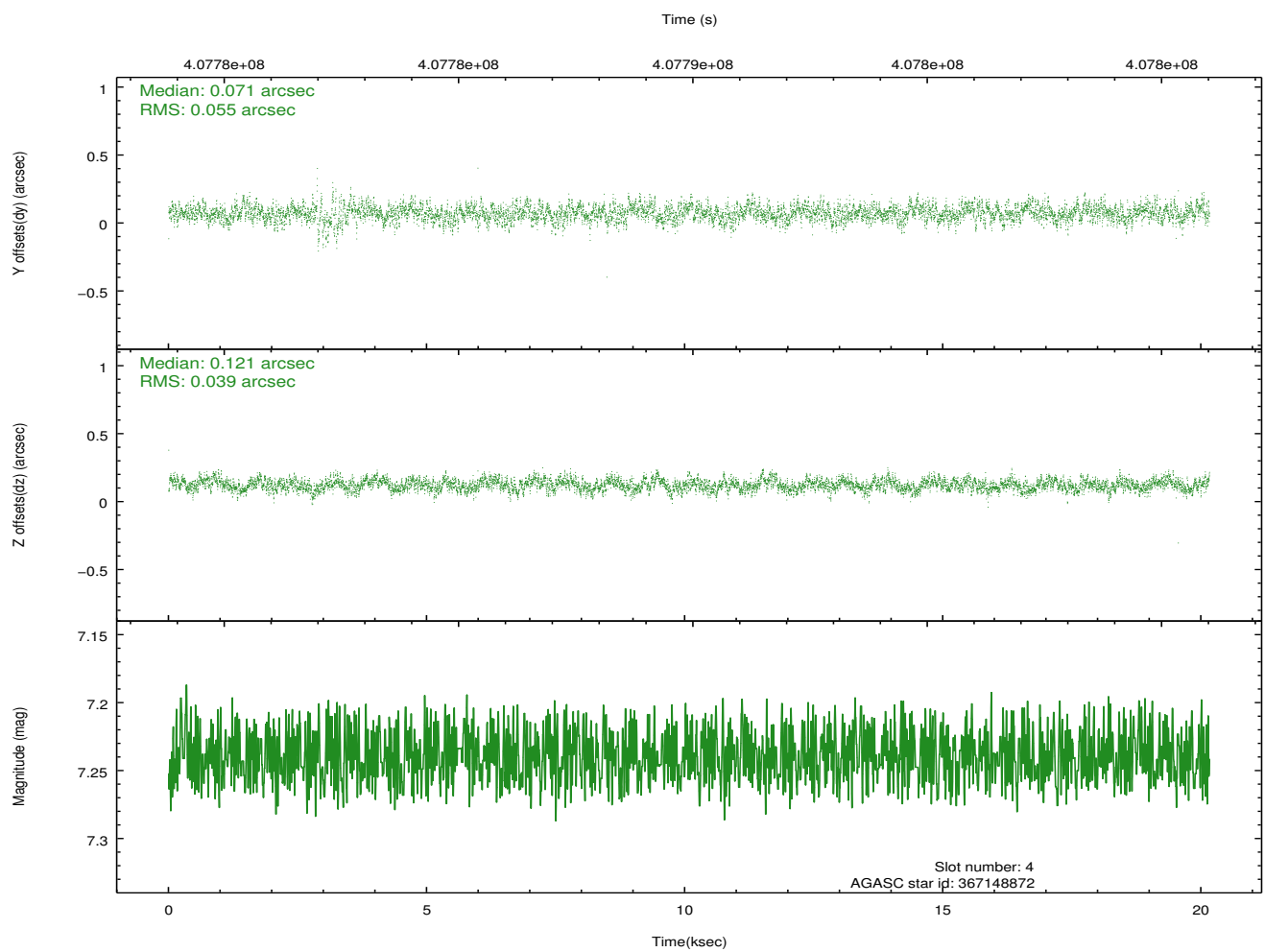
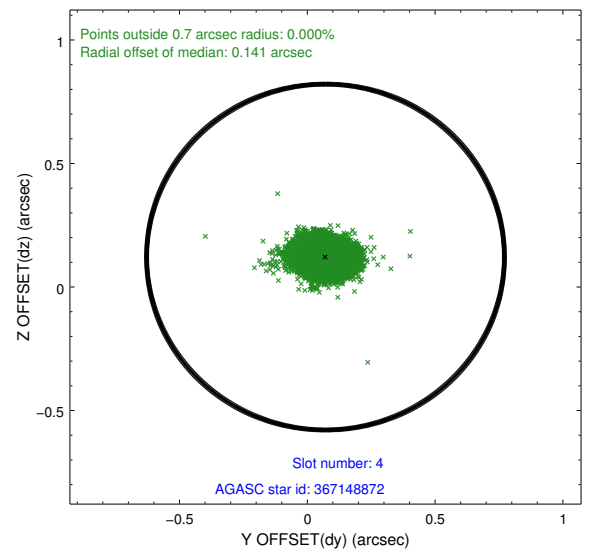
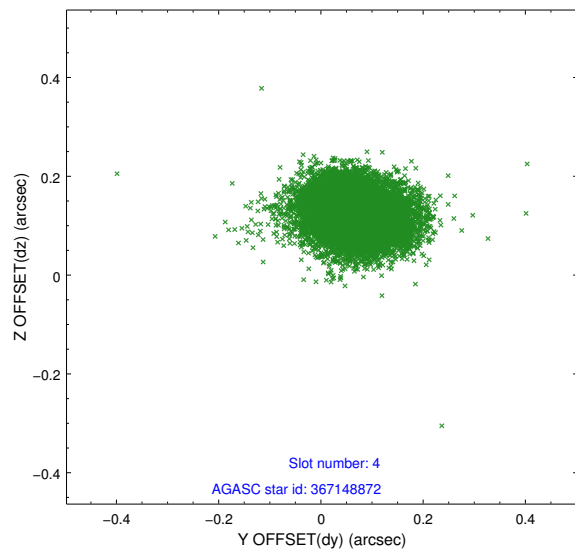
slot	status	id	mag	n_pts	med_dy	med_dz	dr1	dr2	ra	dec	mean_y	mean_z
0	FID	HRC-I-1	7.00	4918	-0.118	-0.031	0.006	0.010	0.000000	0.000000	-772.52	-1300.47
1	FID	HRC-I-2	7.02	4919	0.188	-0.086	0.008	0.013	0.000000	0.000000	840.26	-1302.52
2	FID	HRC-I-4	7.01	4919	0.046	0.025	0.005	0.009	0.000000	0.000000	1270.83	1001.29
3	GUIDE	367146616	8.85	9833	-0.131	-0.173	0.099	0.164	11.418645	41.190163	266.92	2054.26
4	GUIDE	367148872	7.24	9837	0.071	0.121	0.070	0.116	10.505940	40.688258	2178.93	-348.07
5	GUIDE	367663272	9.30	9808	-0.027	0.203	0.120	0.194	10.656279	41.699429	-1474.32	-81.39
6	GUIDE	367674552	8.85	9833	0.050	-0.058	0.091	0.150	11.016238	41.570845	-1052.43	906.15
7	GUIDE	367138920	7.73	9834	0.040	-0.086	0.076	0.123	11.513485	40.808909	1626.09	2379.34

2.4 Star Slots

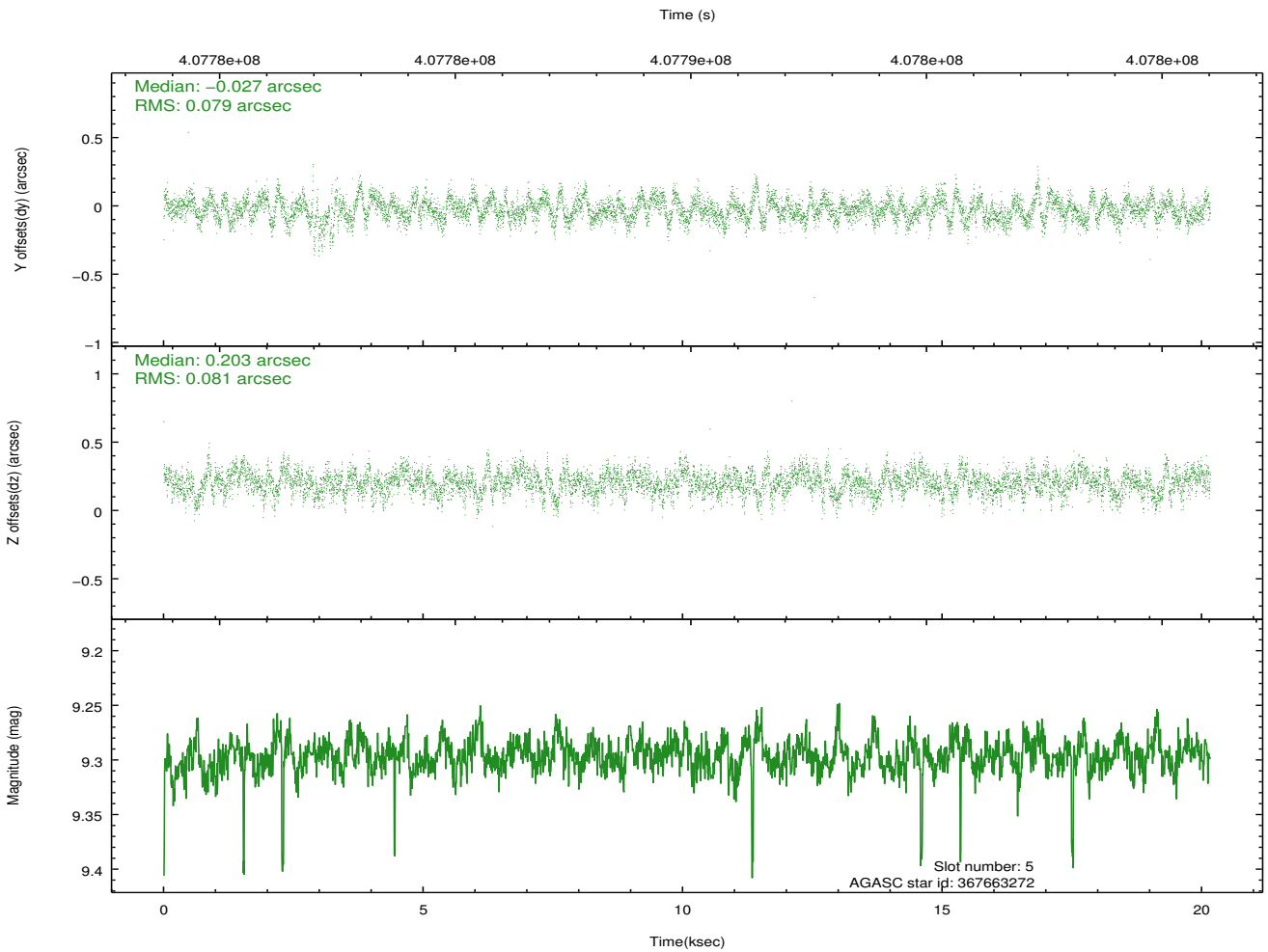
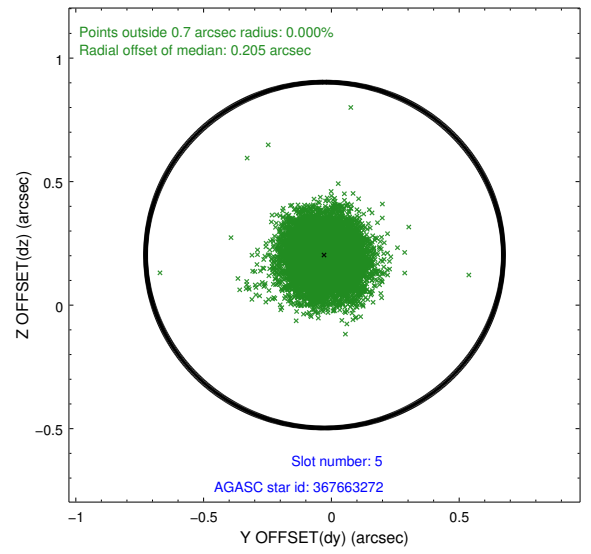
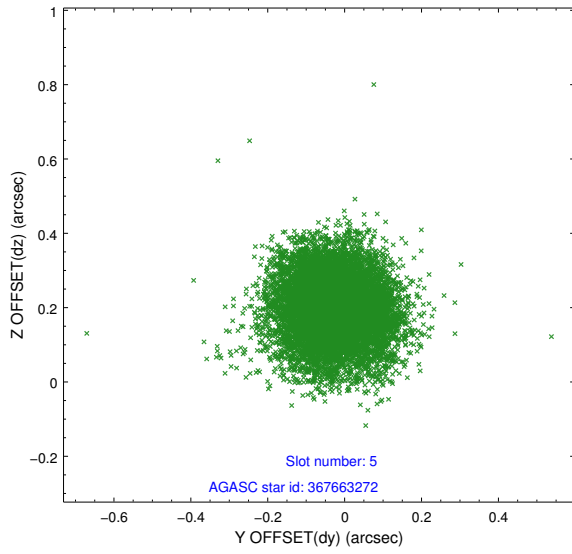
2.4.1 Slot 3



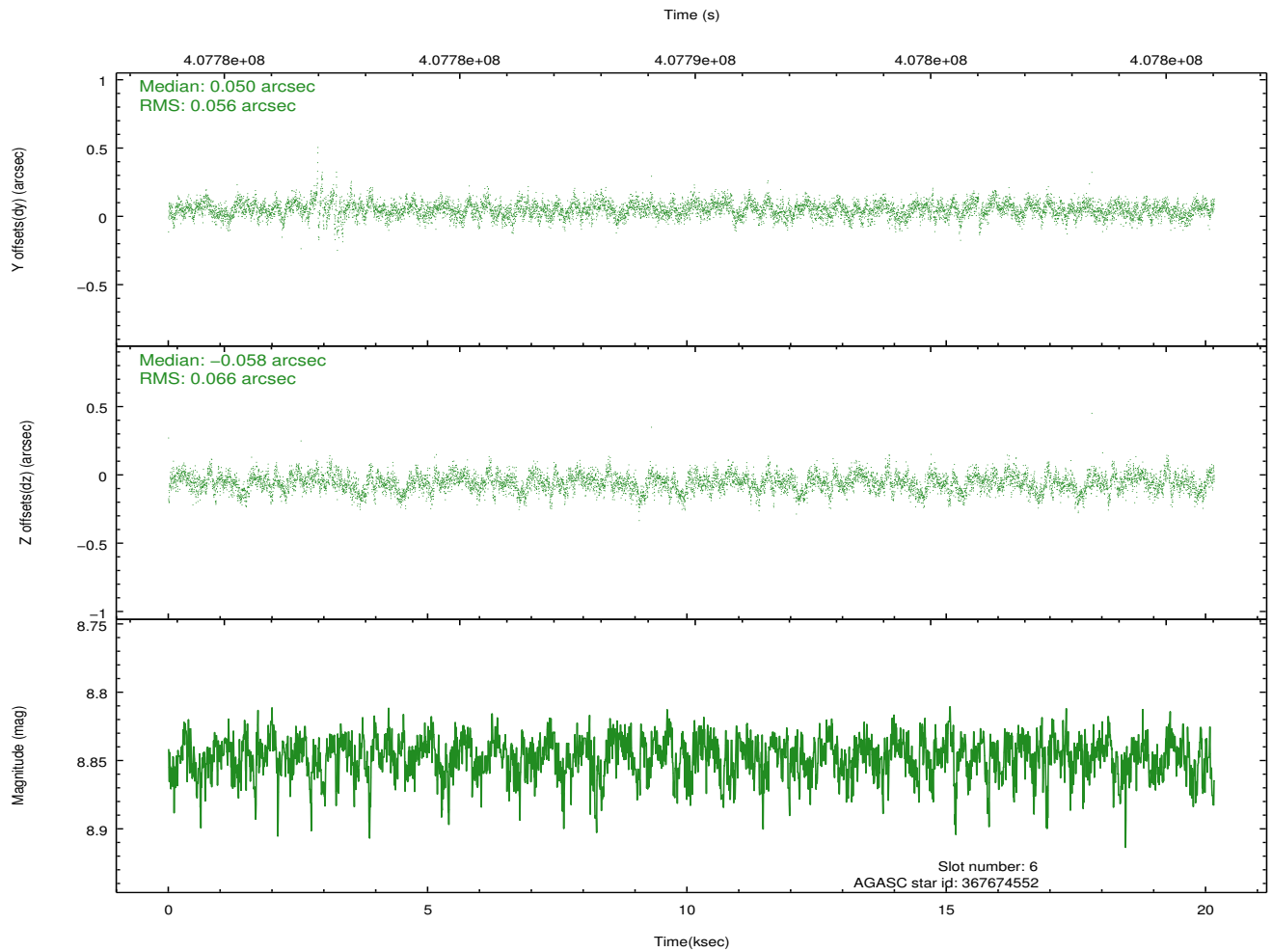
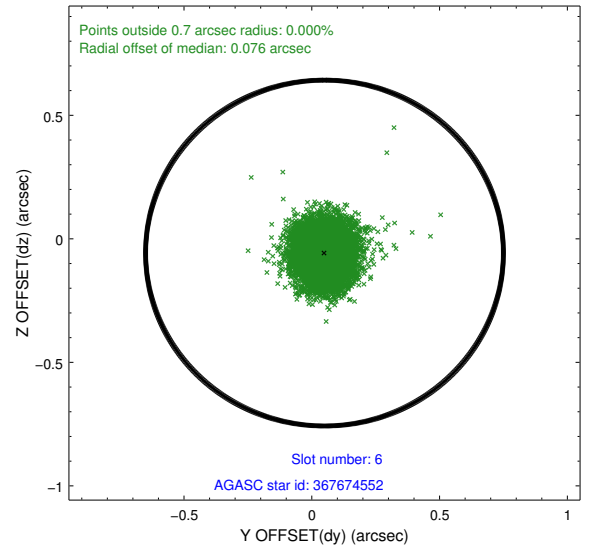
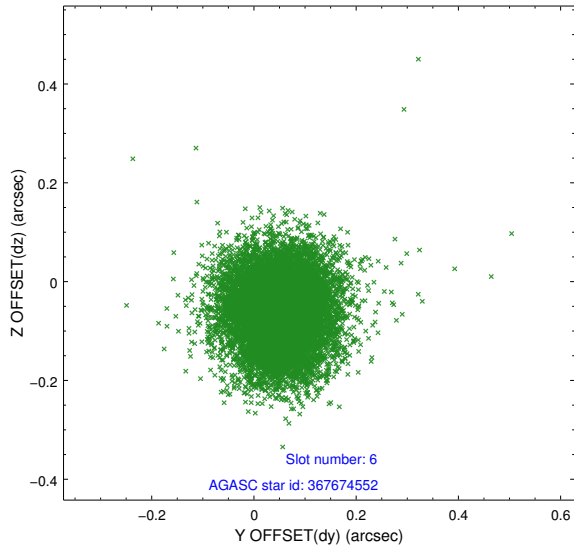
2.4.2 Slot 4



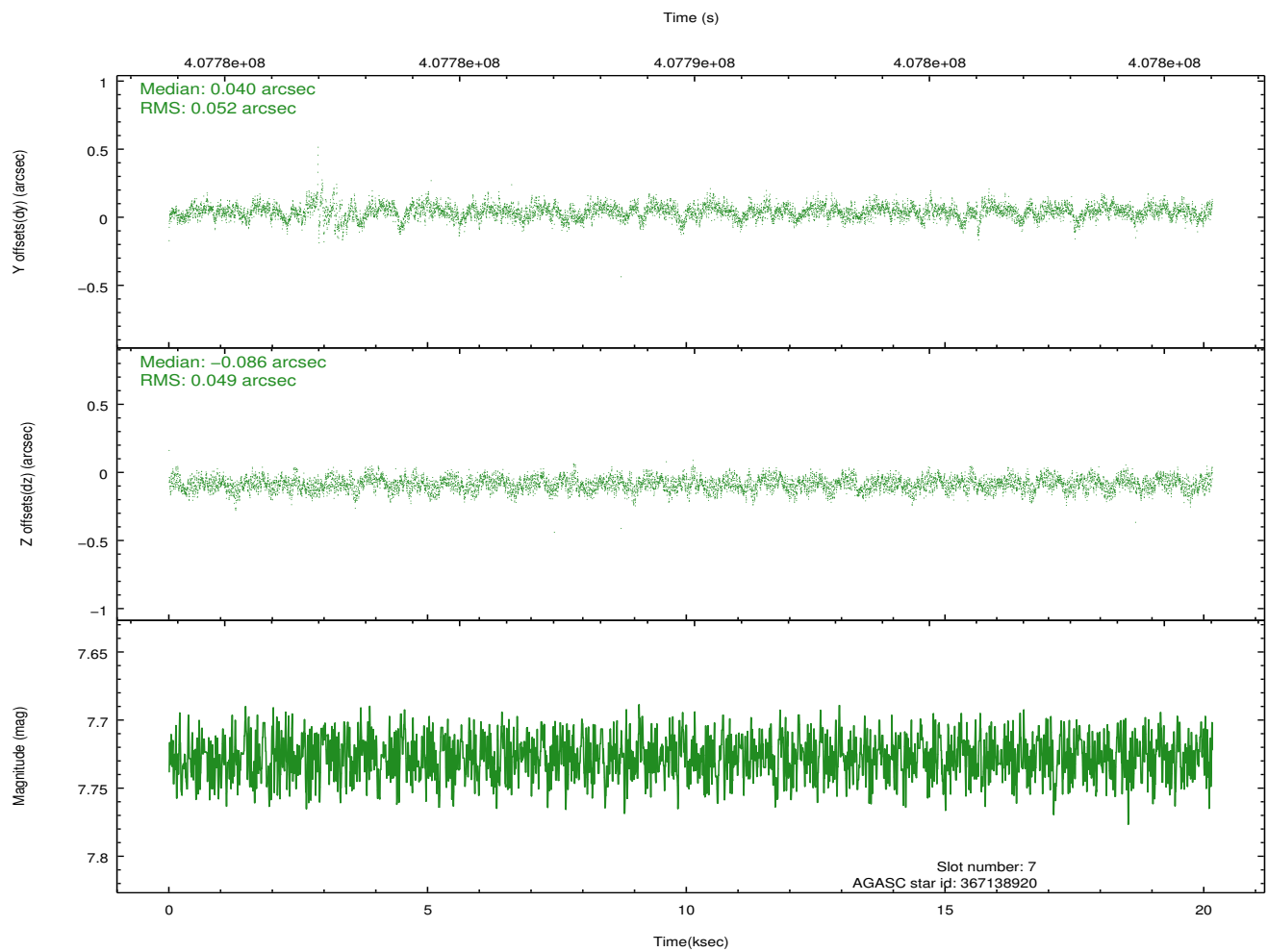
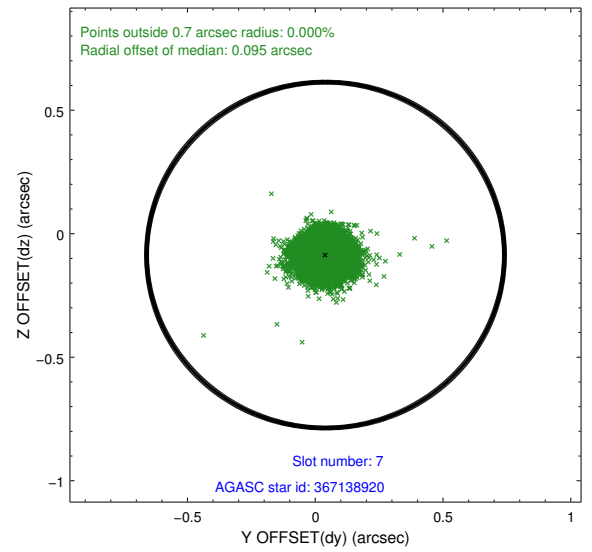
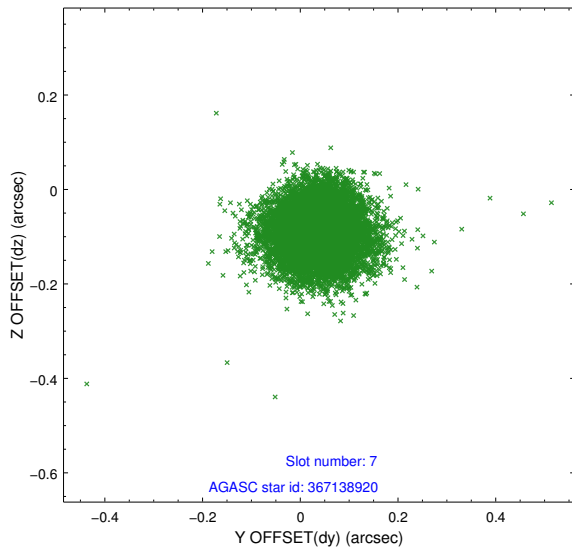
2.4.3 Slot 5



2.4.4 Slot 6

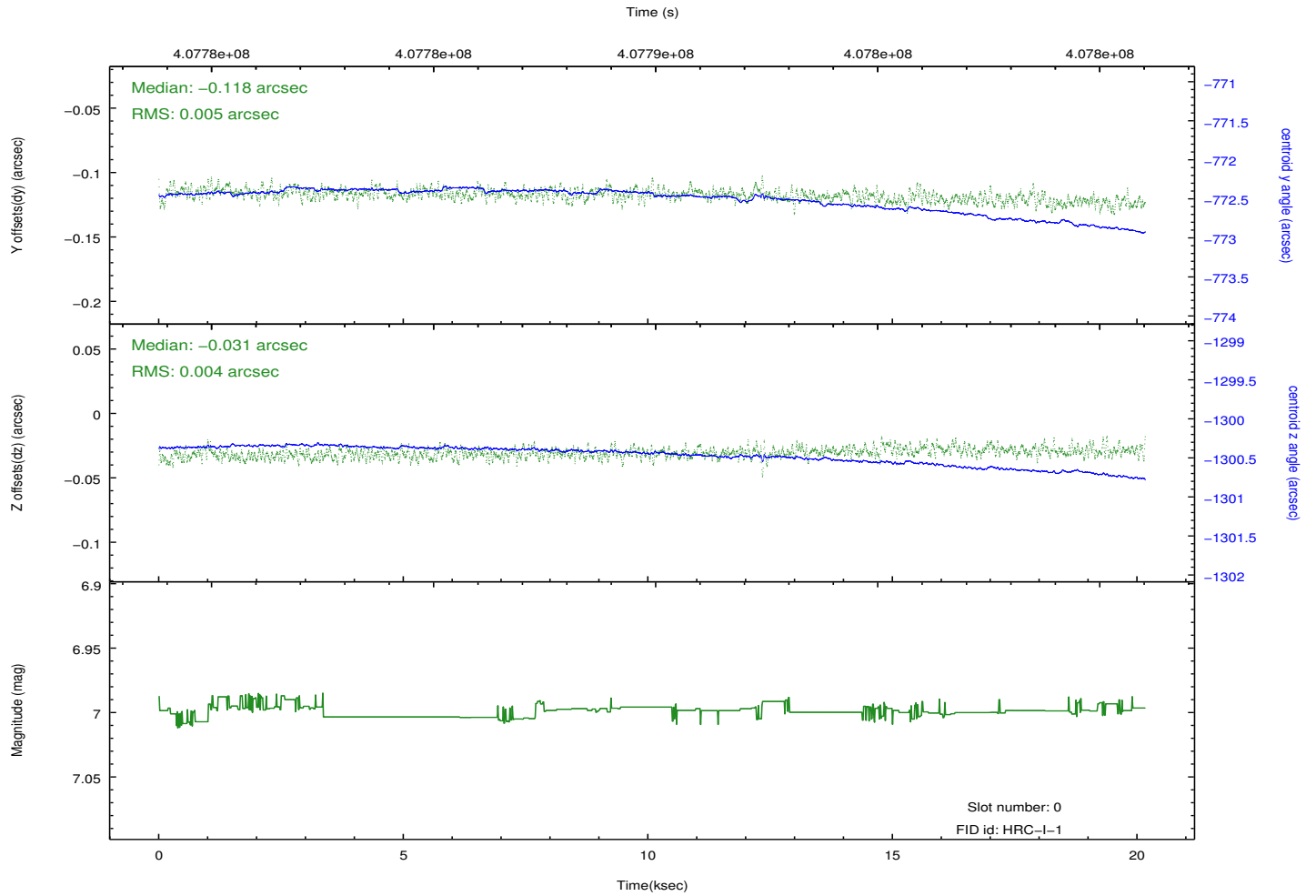
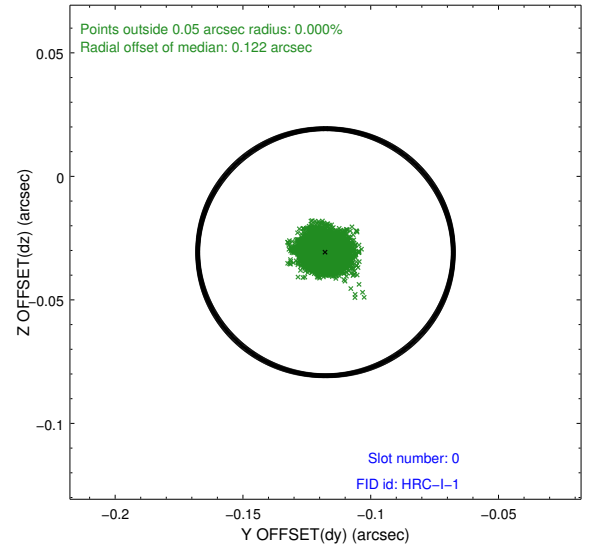
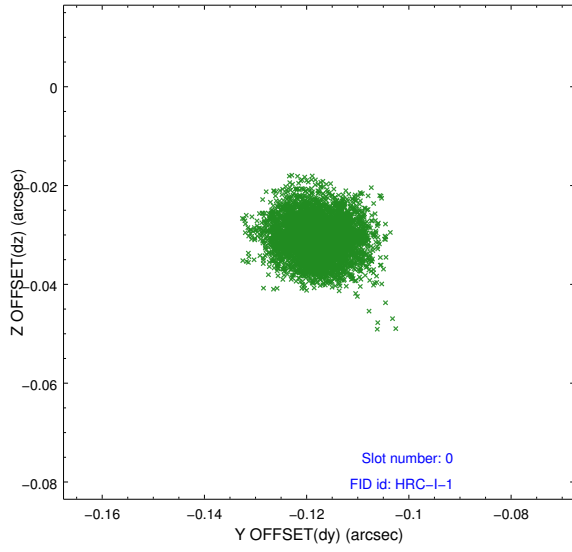


2.4.5 Slot 7

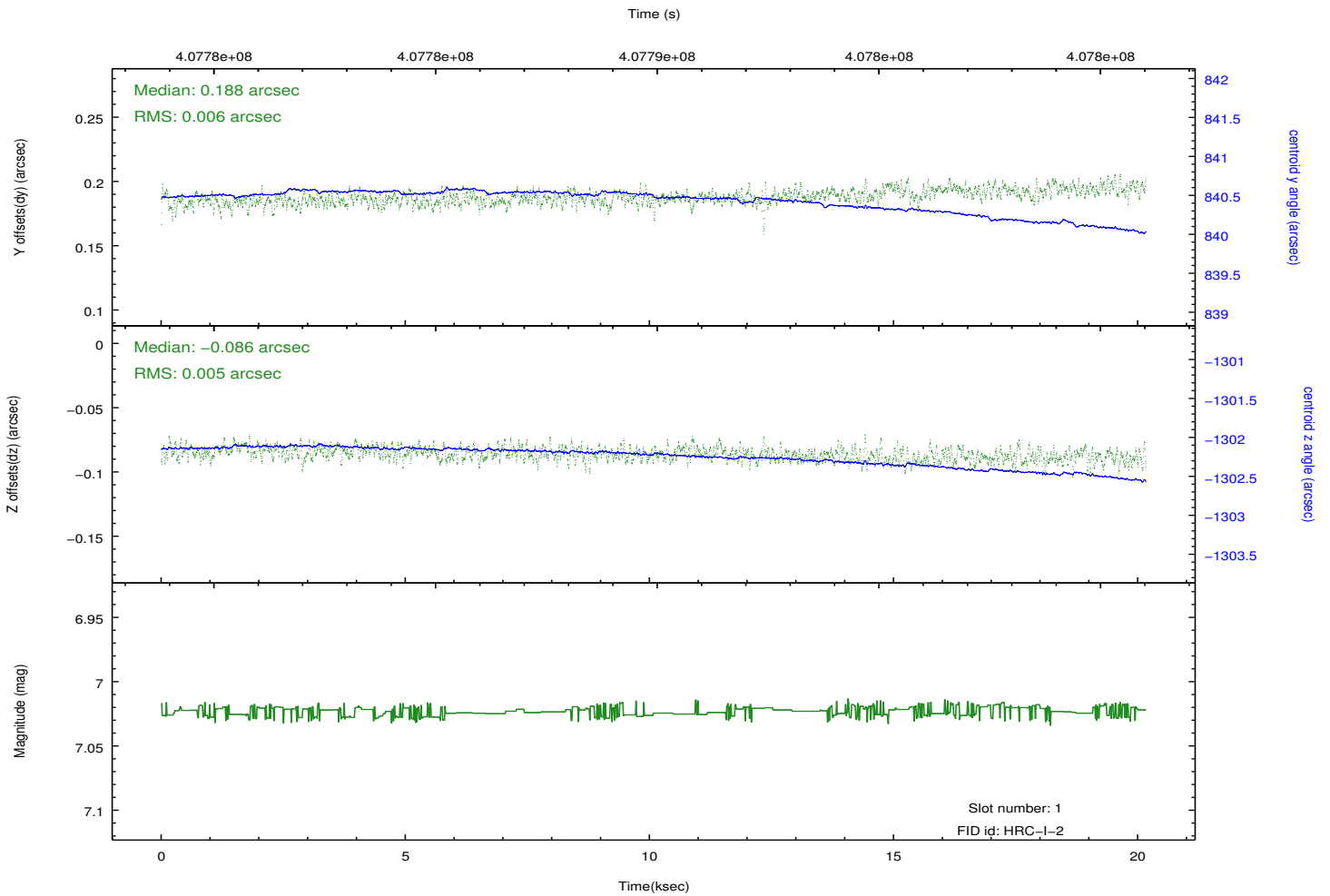
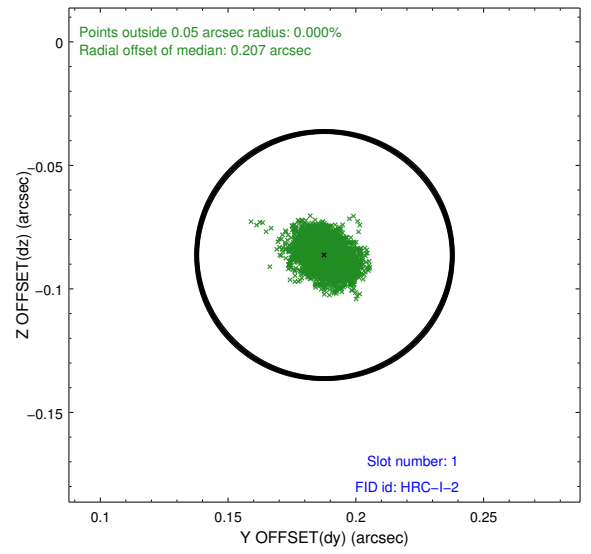
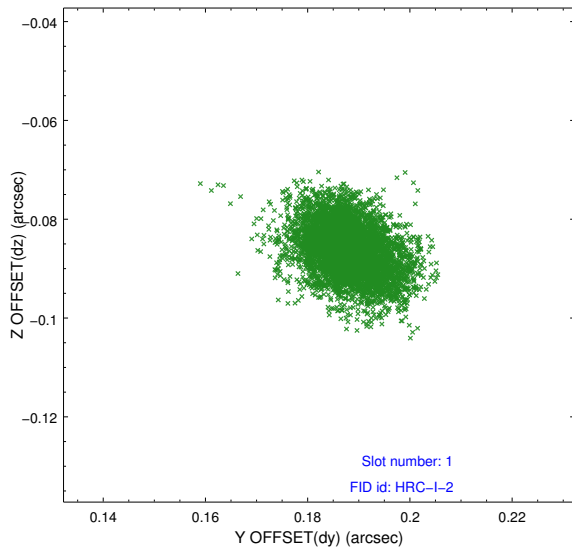


2.5 FID Slots

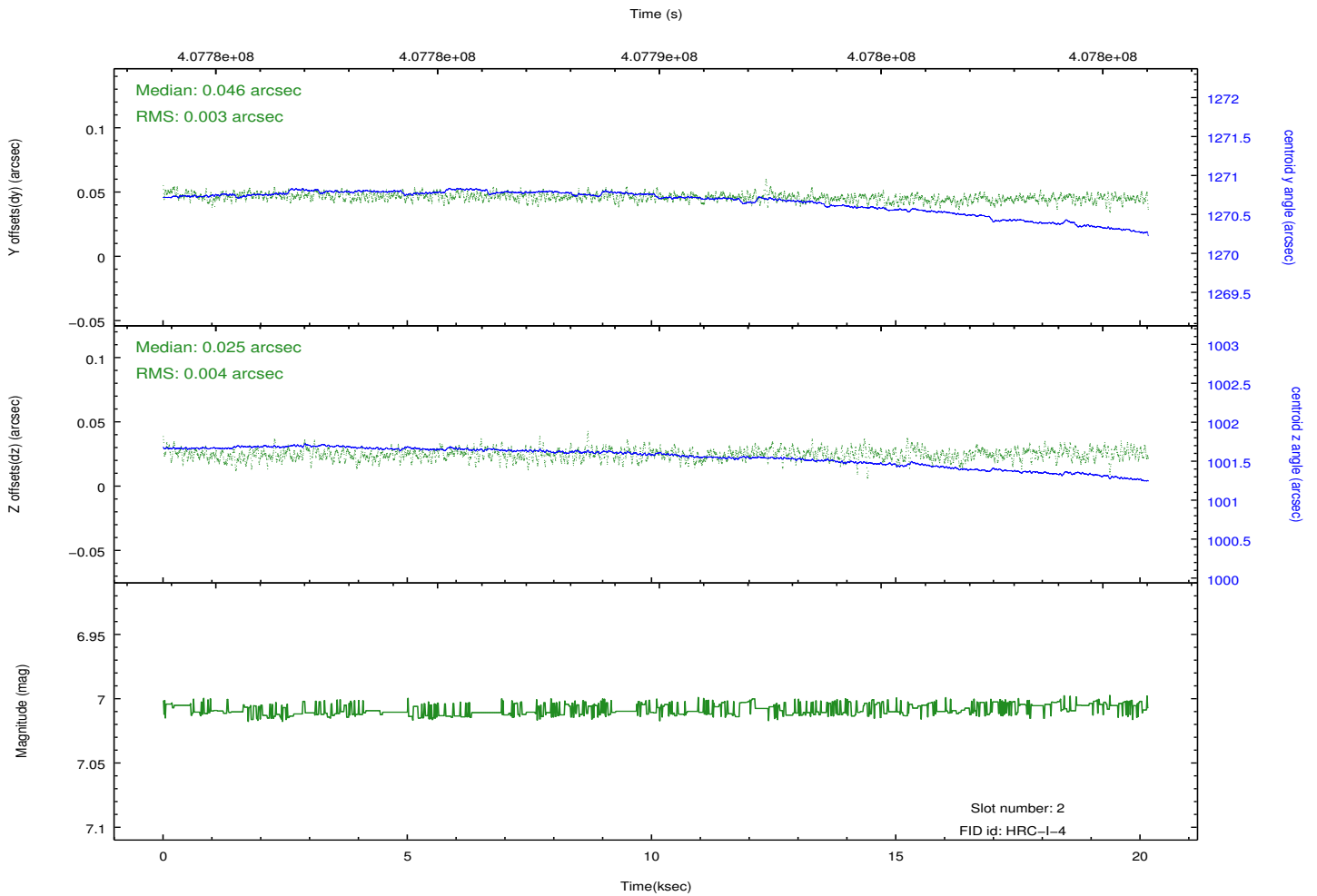
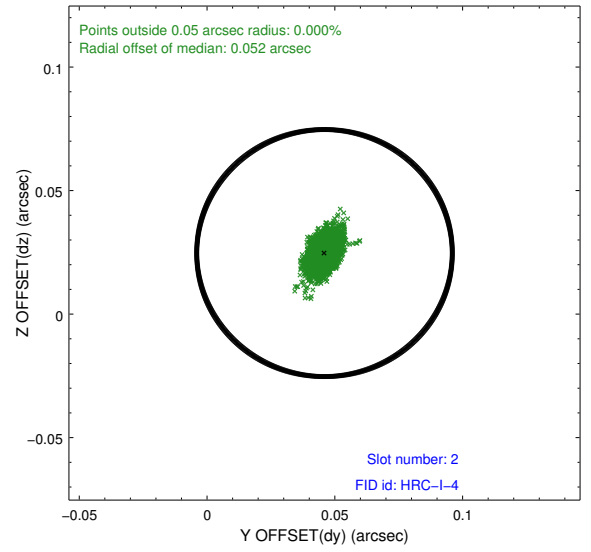
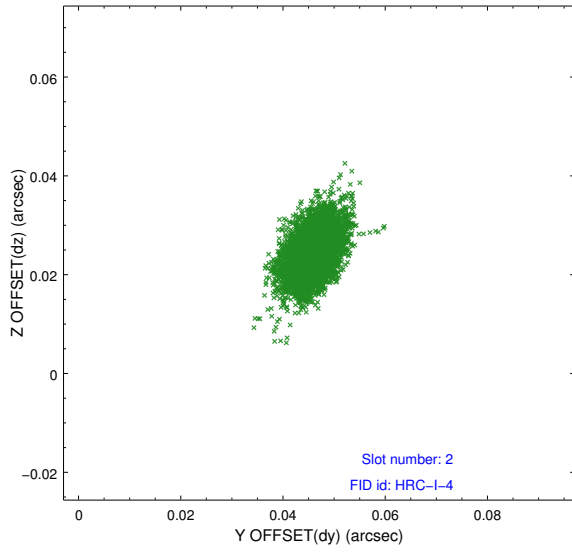
2.5.1 Slot 0



2.5.2 Slot 1



2.5.3 Slot 2



A Summary

A.1 Status

V&V Scientist	Jen Lauer
V&V Date (YYYY-MM-DD)	2012.07.17
V&V Edition	1
V&V Disposition and Status	OK
V&V Charge Time	20.163032289922

A.2 Comments

Joint Proposal: CXO-XMM. Monitor constraint met, follows obs12111 by 10 days.