

V&V Reference Report

L2 ASCDS Version : 8.4.5

Observation 12122 - L2 Version 2
Chandra X-Ray Center

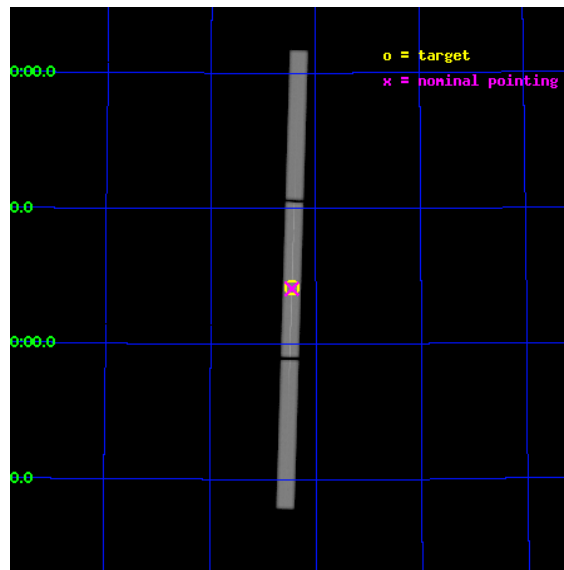
L2 Processing Date : Jun 30 2012

Contents

1	Front	2
2	OBI	3
2.1	OBI	3
2.1.1	Images	3
2.1.2	Parameters	4
2.1.3	Events	4
2.2	Compared Parameters	5
2.3	Aspect	6
2.4	Star Slots	9
2.4.1	Slot 3	9
2.4.2	Slot 4	10
2.4.3	Slot 5	11
2.4.4	Slot 6	12
2.4.5	Slot 7	13
2.5	FID Slots	14
2.5.1	Slot 0	14
2.5.2	Slot 1	15
2.5.3	Slot 2	16
3	Gratings	17
3.1	LETG Arm	17
A	Summary	19
A.1	Status	19
A.2	Comments	19

1 Front

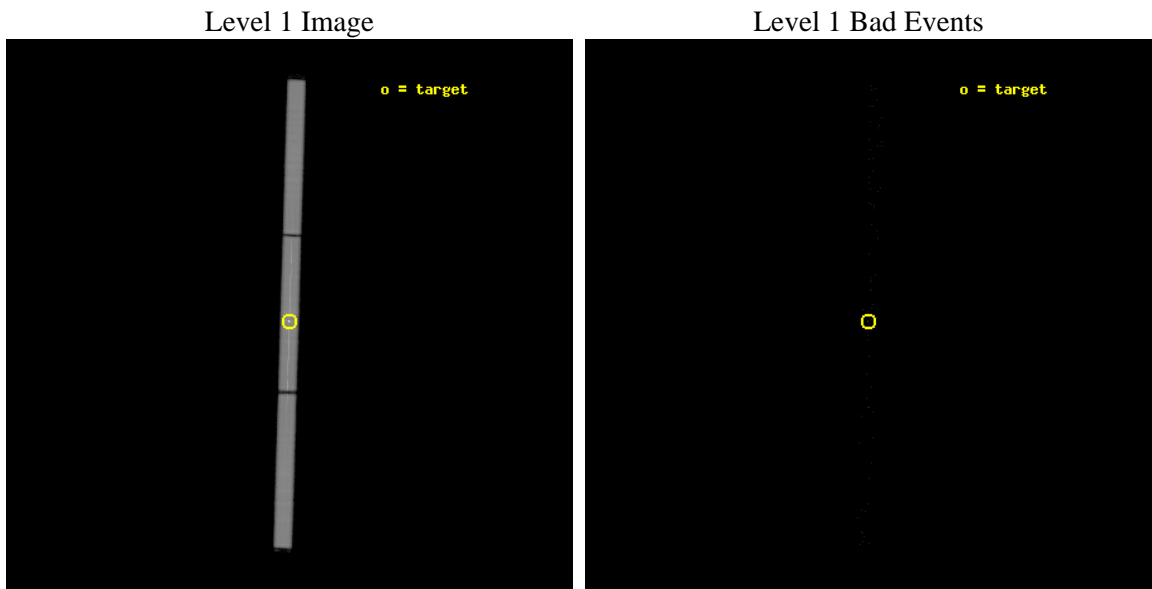
seq_num	790225	Sequence number
obs_id	12122	Observation id
title	AO-11 Calibration Observations of Mkn 421	Proposal title
observer	Calibration Calibration	Principal investigator
object	MKN421	Source name
ra_targ	166.113333	Observer's specified target RA [deg]
dec_targ	38.208806	Observer's specified target Dec [deg]
ra_nom	166.1134520472	Nominal RA [deg]
dec_nom	38.204069545289	Nominal Dec [deg]
roll_nom	271.64567988945	Nominal Roll [deg]
revision	2	Processing version of data
ontime	25179.126286447	[s]
livetime	24920.129431936	Ontime multiplied by DTCOR
l2events	2273387	Number of level 2 events



2 OBI

2.1 OBI

2.1.1 Images



2.1.2 Parameters

obi_num	0	Obi number	sched_exp_time	25000.000000	[s] Scheduled observation exposure time
ascdsver	8.4.5	Processing system revision	ontime	25179.126286447	[s]
caldsver	4.5.0	 	l1events	2894204	Number of level 1 events
date	2012-06-30T01:01:16	Date and time of file creation			
revision	2	Processing version of data			

2.1.3 Events

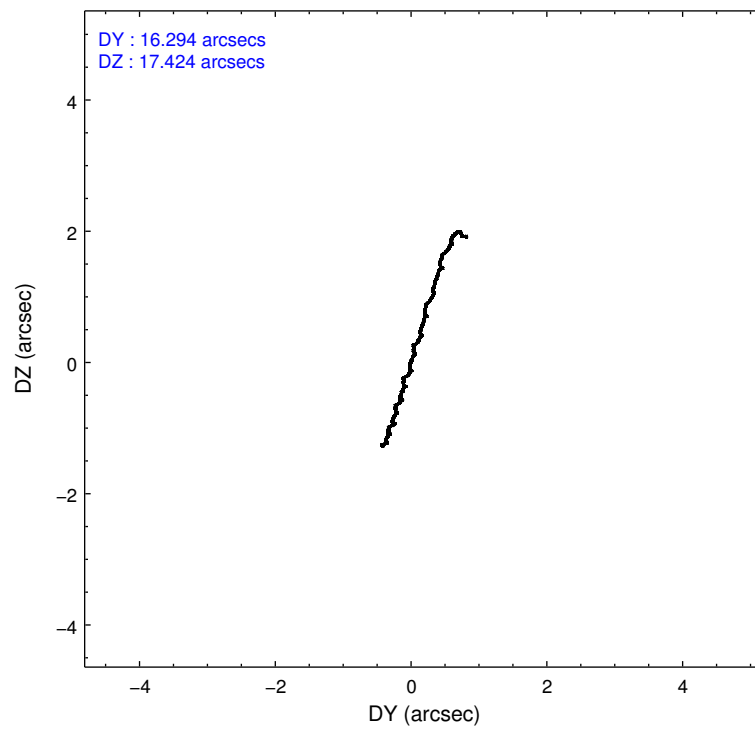
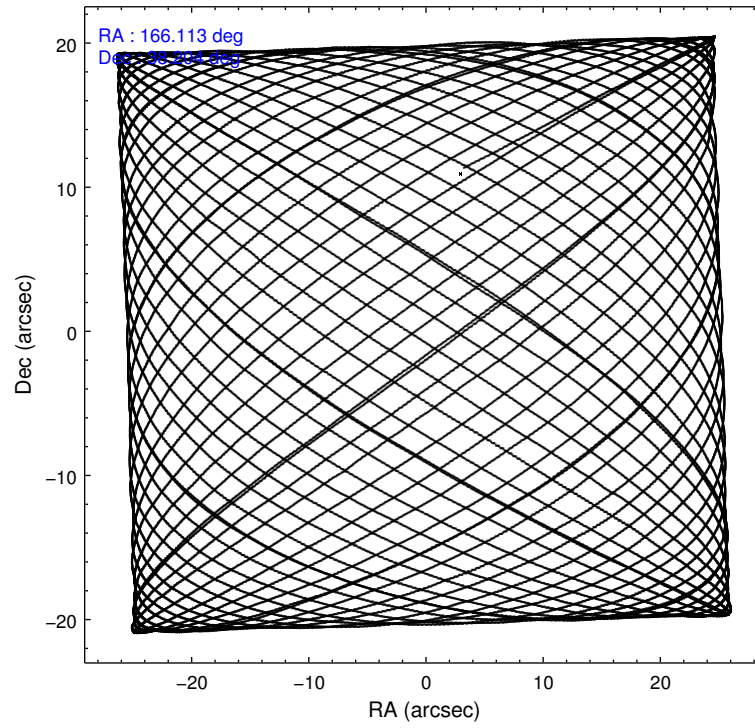
Level 1 Events

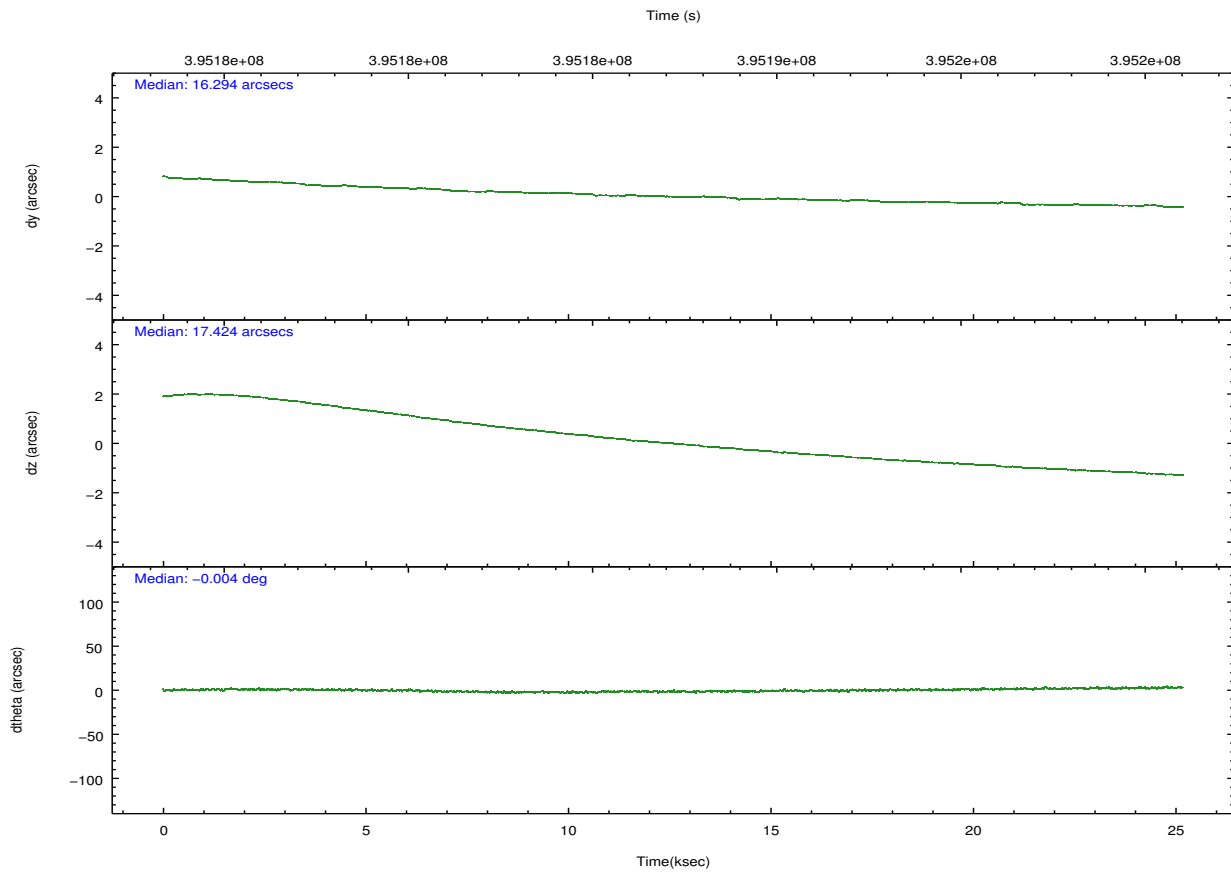
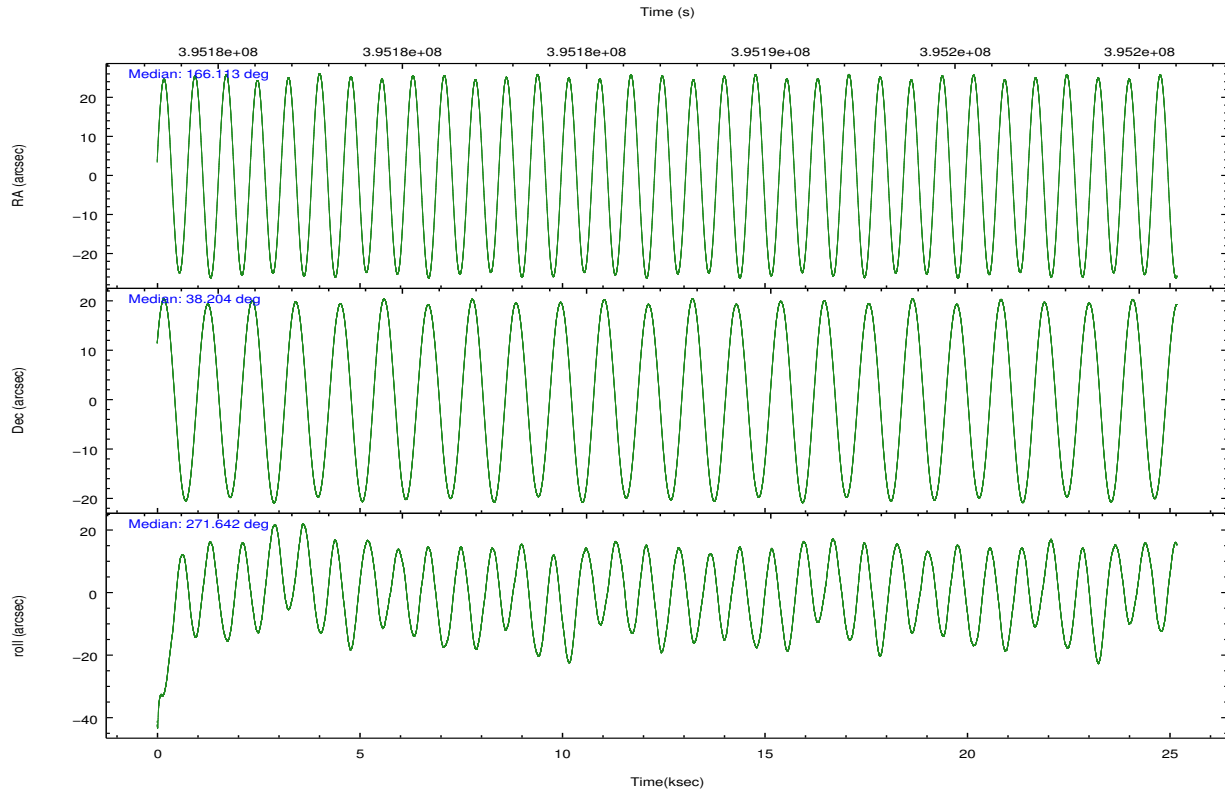
	segment 1	segment 2	segment 3
level 1 events	917445	1047923	928836
rejected events	5212	6128	5443
rejected %	0%	0%	0%

2.2 Compared Parameters

Parameter	Planned	Actual	Parameter	Planned	Actual
Instrument	HRC	HRC	Obspar format version number	7	7
Detector	HRC-S	HRC-S	Obspar file type	PREDICTED	ACTUAL
Grating	LETG	LETG	Obspar update status	NONE	UPDATED
Data mode	OBSERVING	OBSERVING			
Observation mode	POINTING	POINTING			
[deg] Pointing RA	166.092720	166.1134520471985			
[deg] Pointing Dec	38.227702	38.20406954528941			
[deg] Pointing Roll	271.591172	271.645679889448			
[mm] SIM focus pos	-1.429586	-1.428180813131781			
[mm] SIM defocus	0.1037507710433287	0.1051558262725154			
[mm] SIM translation stage pos	250.455976	250.466033080201			
[mm] SIM translation stage offset	0	-0.01005468664627074			
[s] Observation start time (MET)	395174763.184000	395174295.24923			
Observation start date	2010-07-10T18:44:57	2010-07-10T18:38:15			
[s] Observation end time (MET)	395199763.184000	395200286.68806			
Observation end date	2010-07-11T01:41:37	2010-07-11T01:51:26			

2.3 Aspect



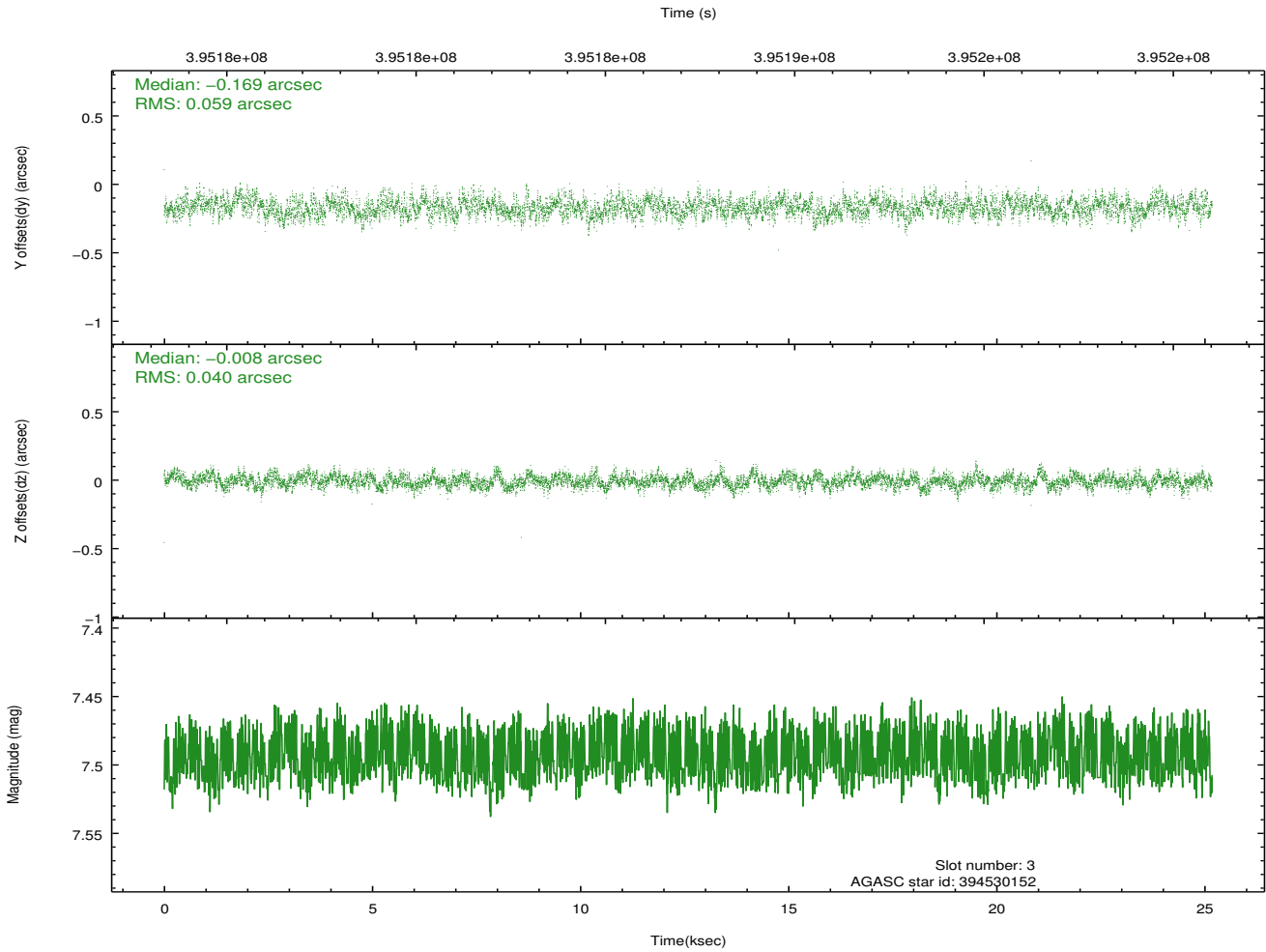
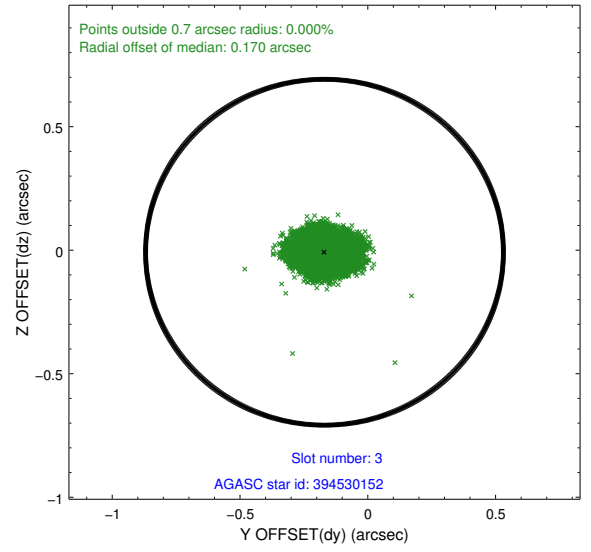
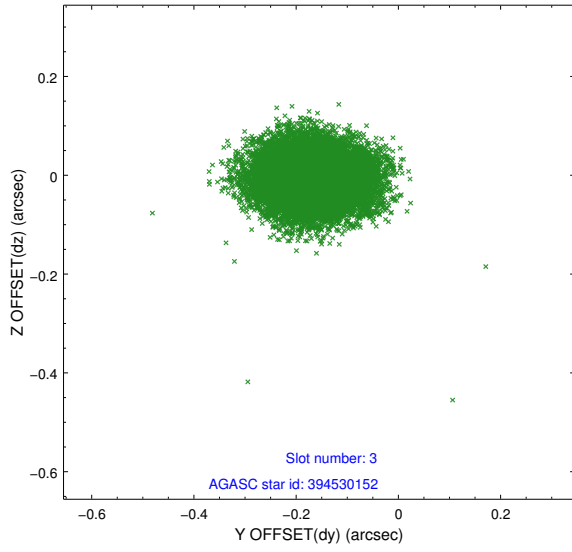


Slot Statistics

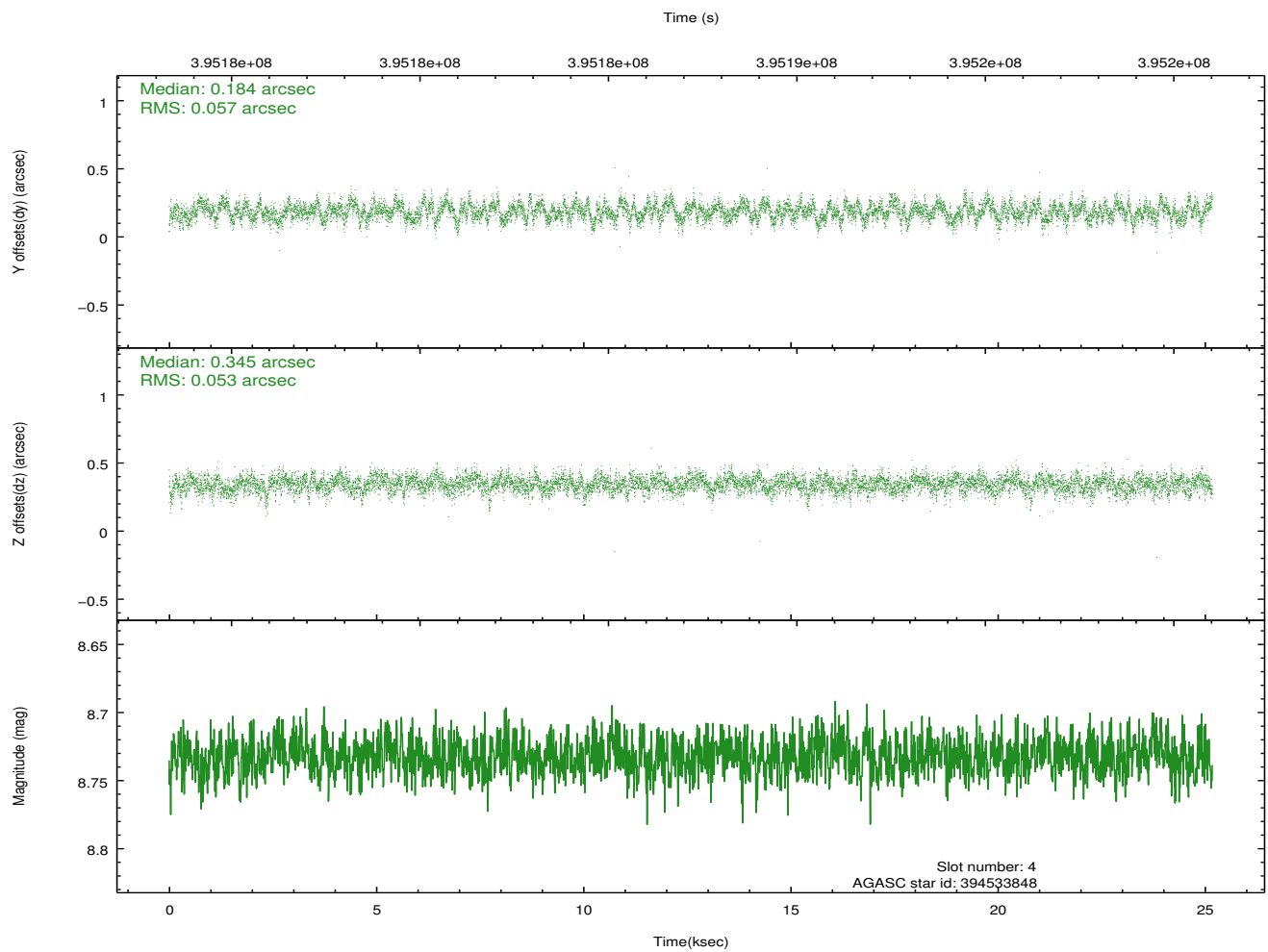
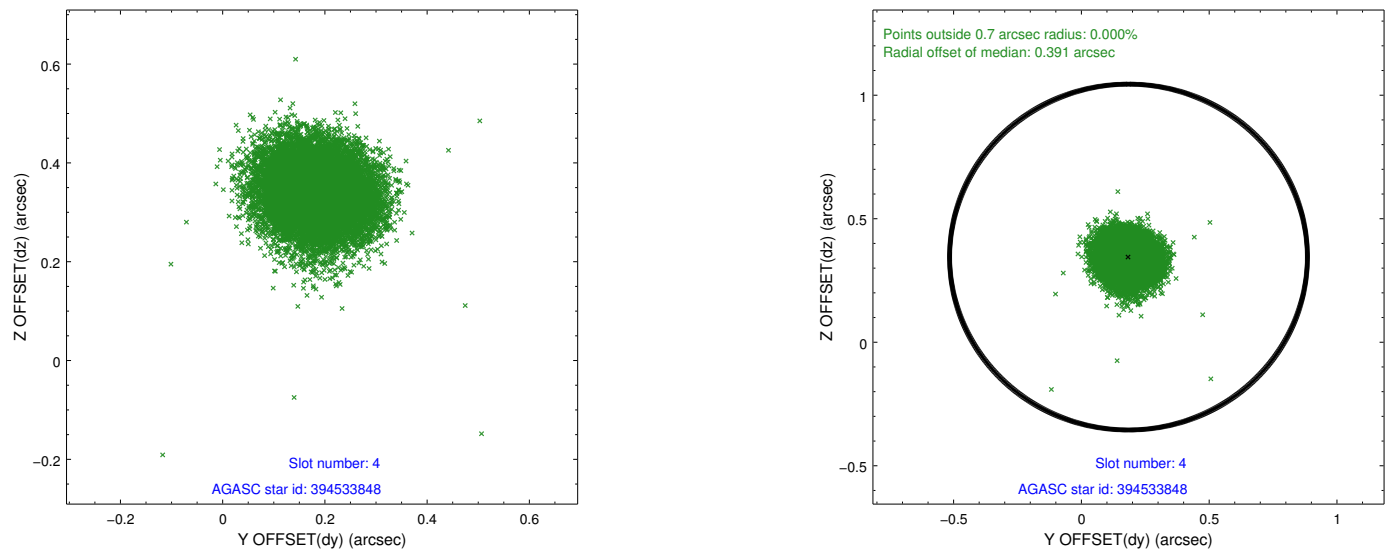
slot	status	id	mag	n_pts	med_dy	med_dz	dr1	dr2	ra	dec	mean_y	mean_z
0	FID	HRC-S-1	7.04	6142	0.036	-0.164	0.025	0.070	0.000000	0.000000	-1170.82	-466.57
1	FID	HRC-S-2	7.02	6142	0.268	-0.120	0.008	0.019	0.000000	0.000000	1228.90	-459.19
2	FID	HRC-S-3	7.05	6142	0.084	-0.019	0.026	0.070	0.000000	0.000000	-1173.31	563.05
3	GUIDE	394530152	7.49	12282	-0.169	-0.008	0.076	0.123	166.075805	38.868252	-2306.23	16.56
4	GUIDE	394533848	8.73	12280	0.184	0.345	0.083	0.133	166.382906	38.276007	-152.80	821.54
5	GUIDE	394543960	9.79	12252	0.080	0.119	0.180	0.302	165.802757	37.787371	1560.86	-868.31
6	GUIDE	394546712	6.60	12284	-0.086	0.325	0.076	0.125	166.451462	38.394357	-573.10	1028.01
7	GUIDE	394546720	6.41	12283	-0.012	-0.775	0.095	0.163	166.130115	38.241361	-45.95	106.44

2.4 Star Slots

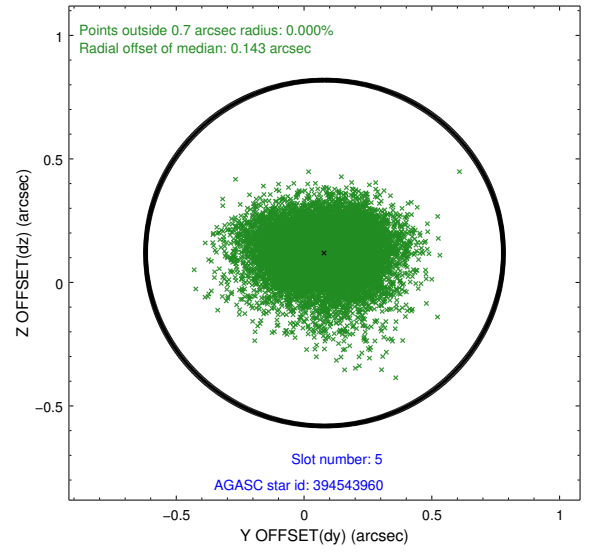
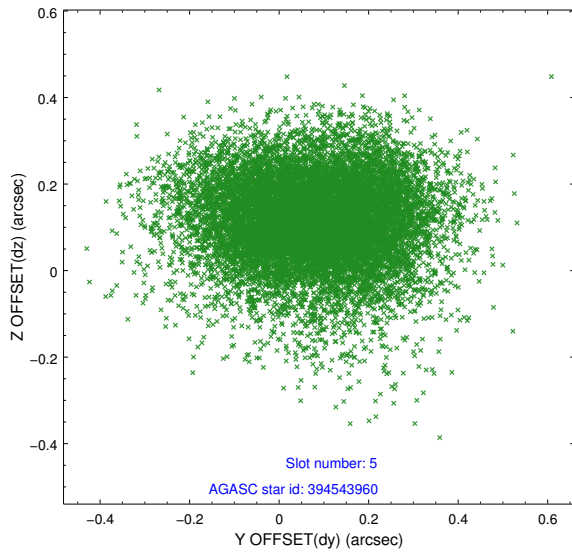
2.4.1 Slot 3



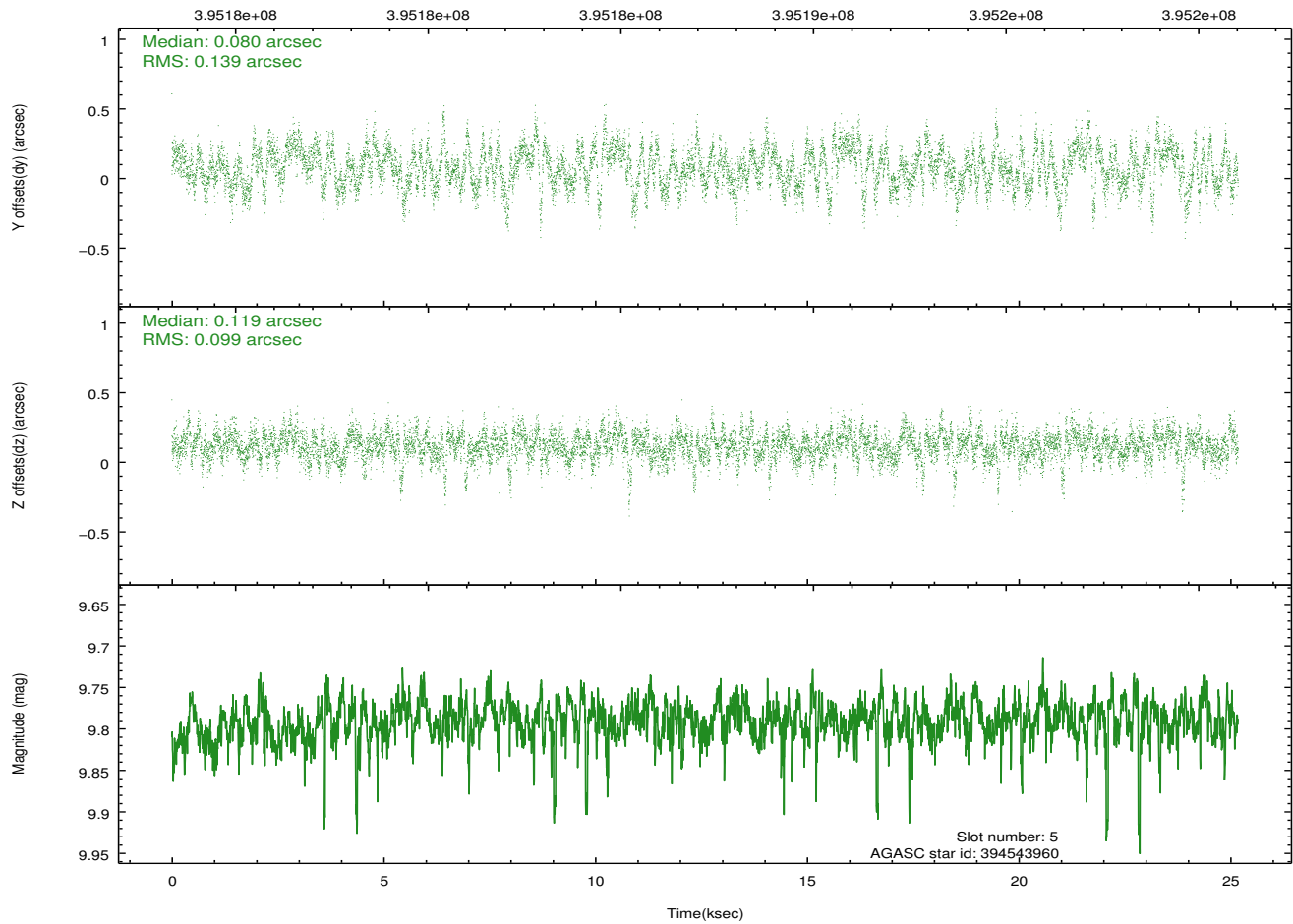
2.4.2 Slot 4



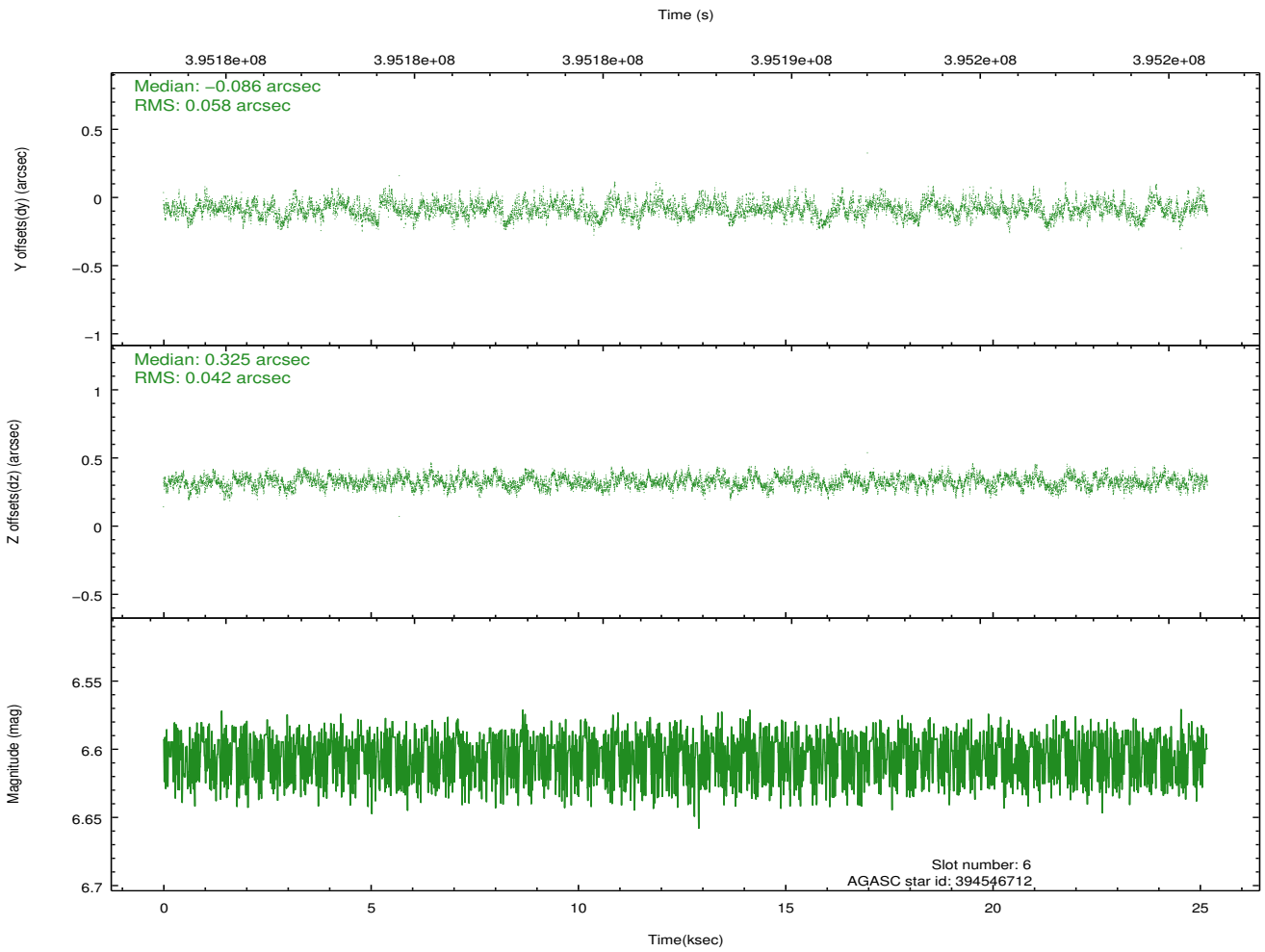
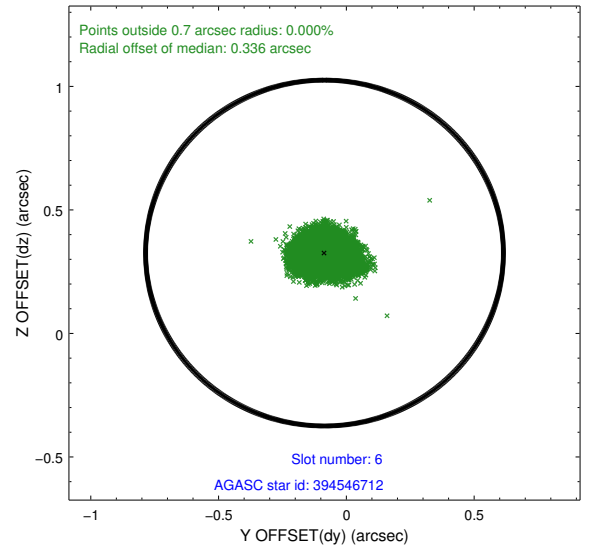
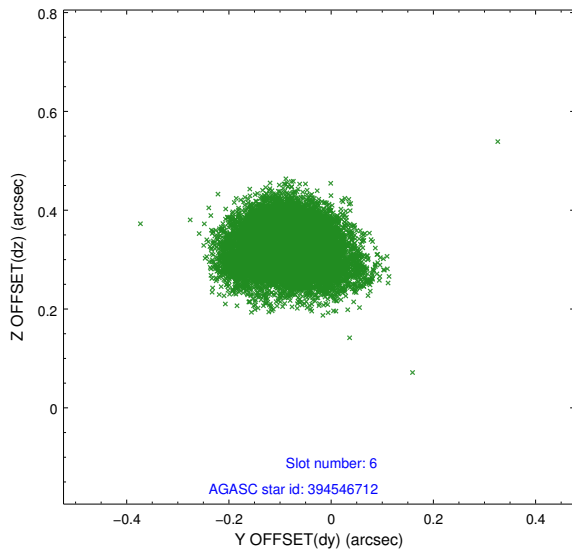
2.4.3 Slot 5



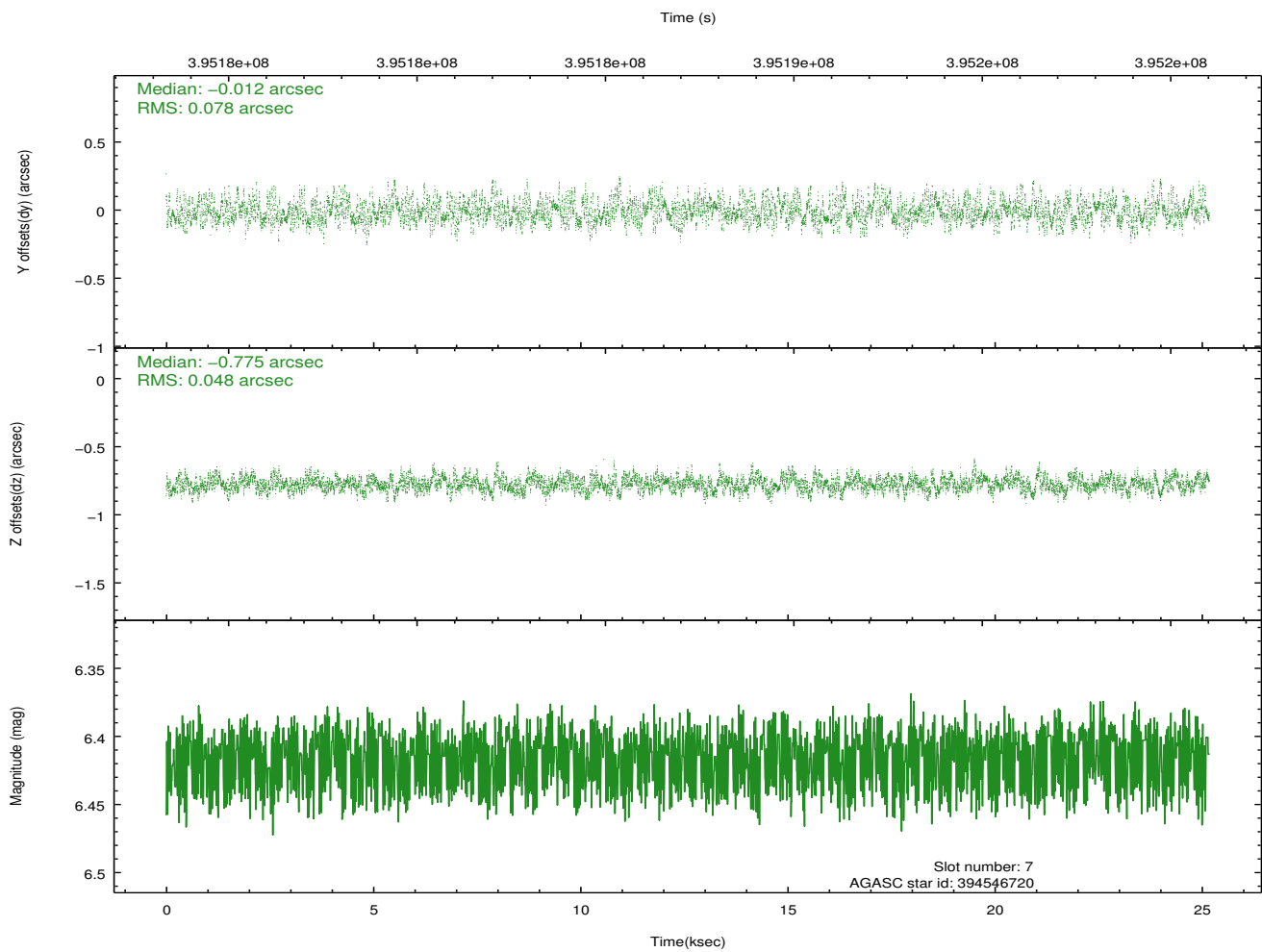
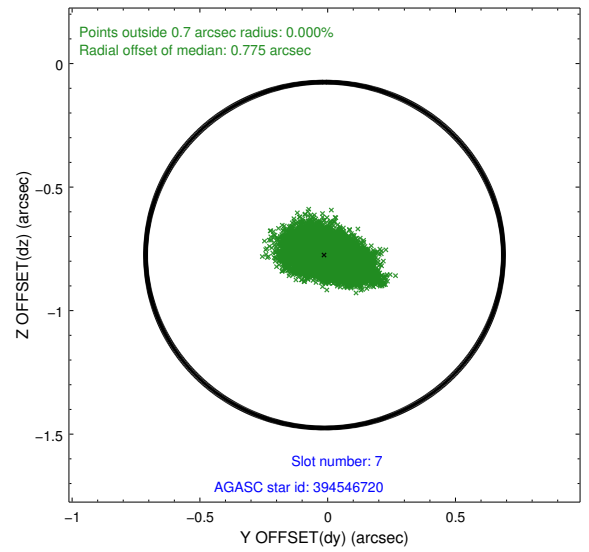
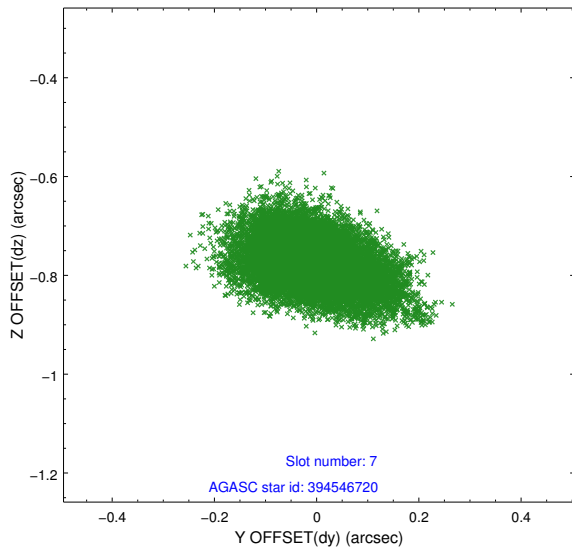
Time (s)



2.4.4 Slot 6

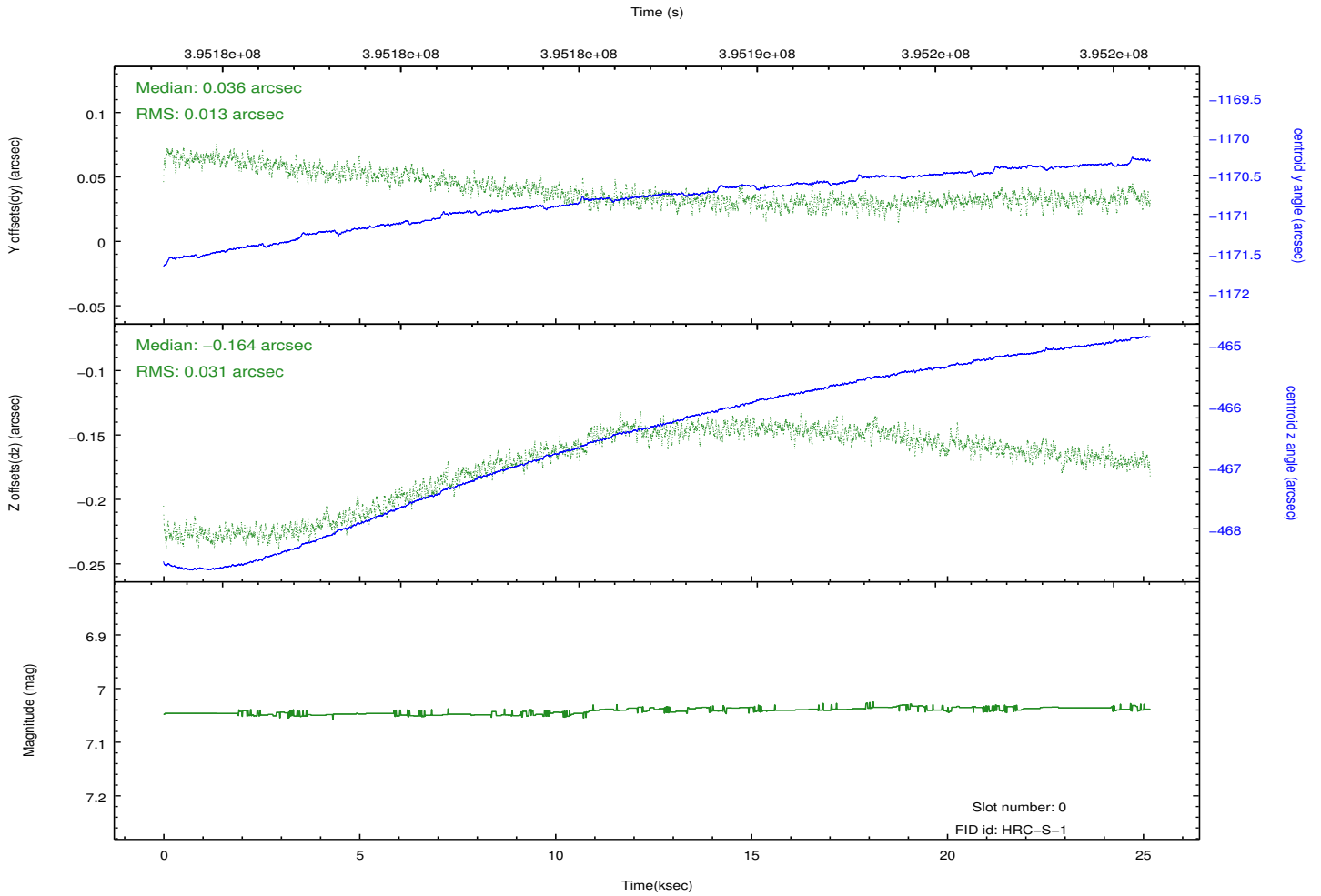
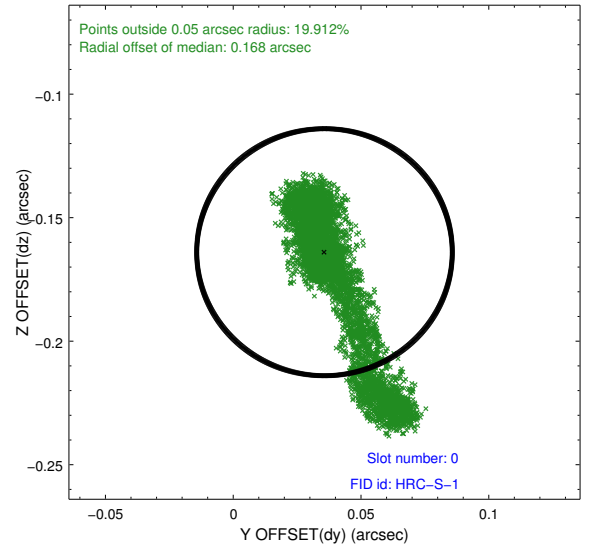
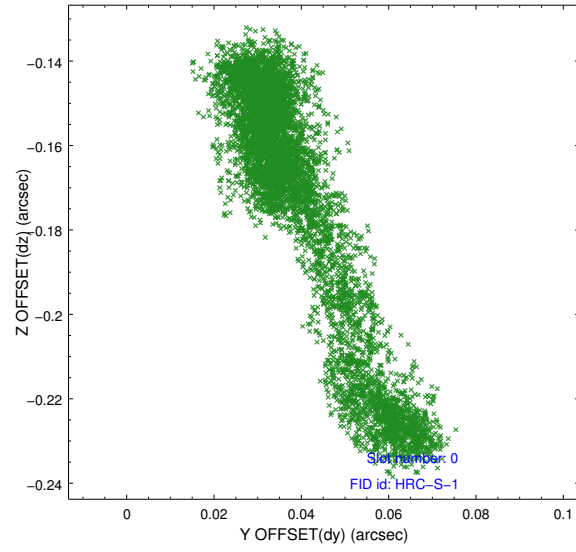


2.4.5 Slot 7

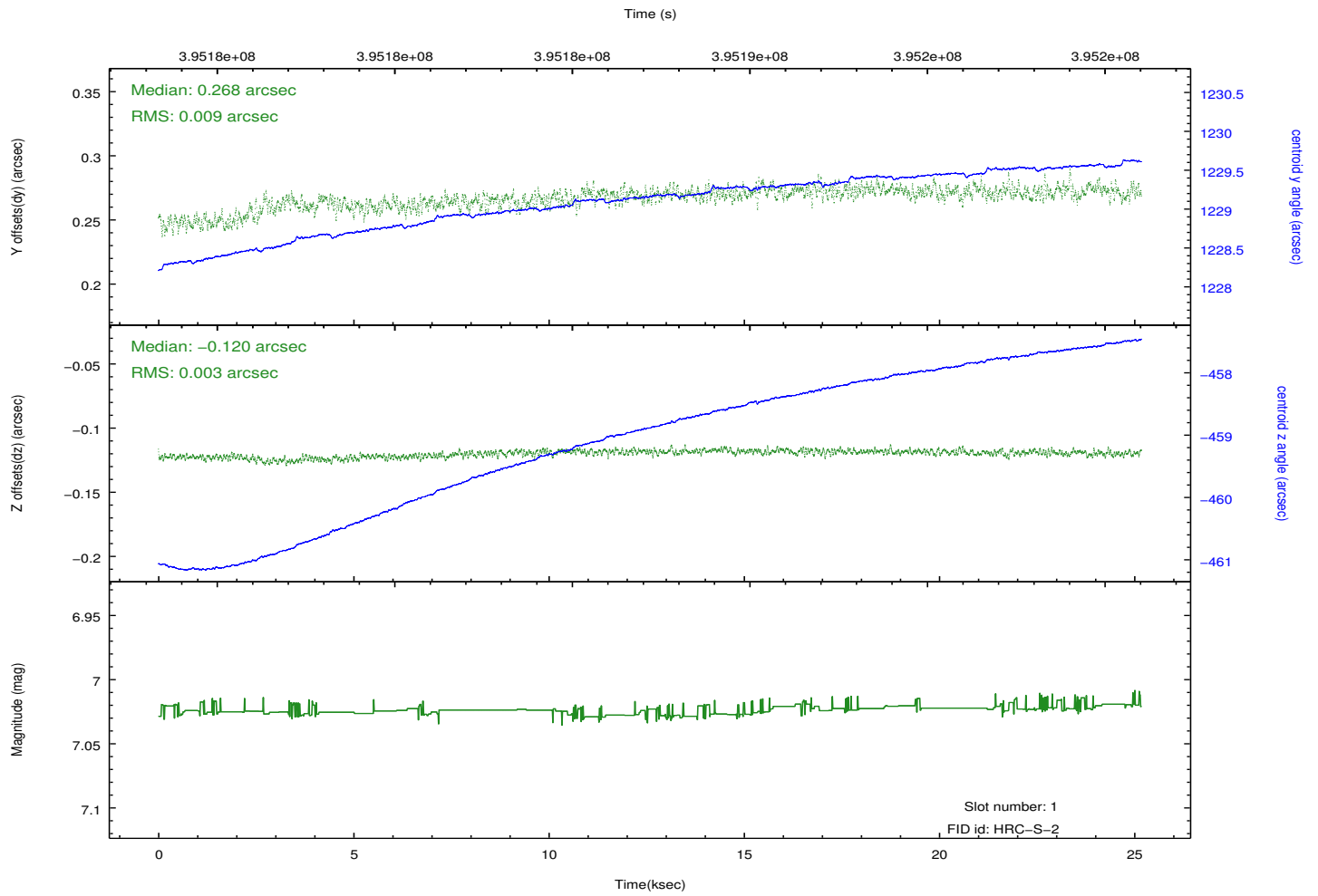
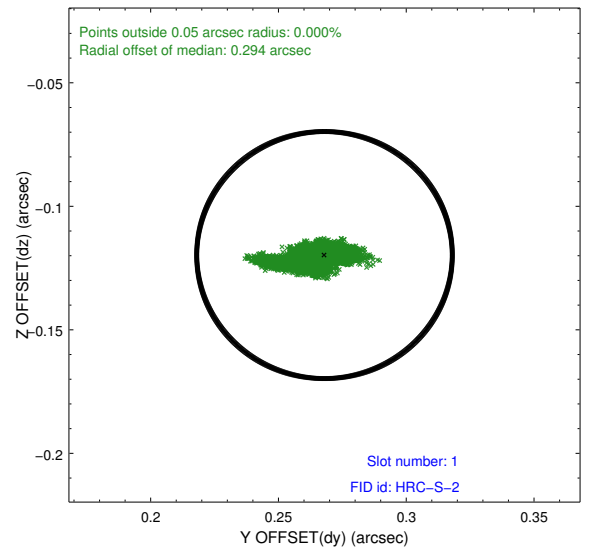
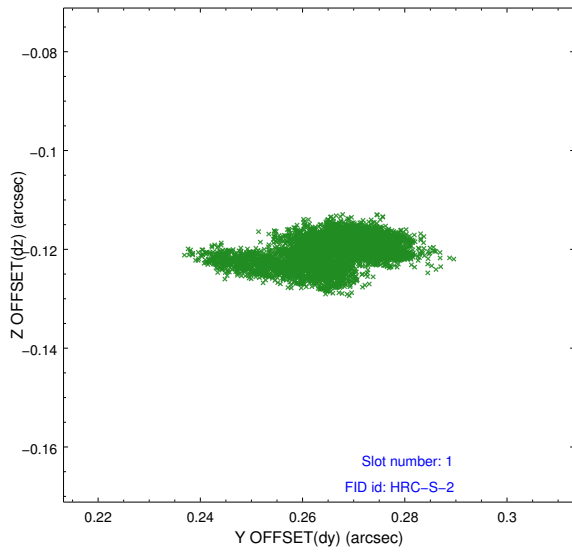


2.5 FID Slots

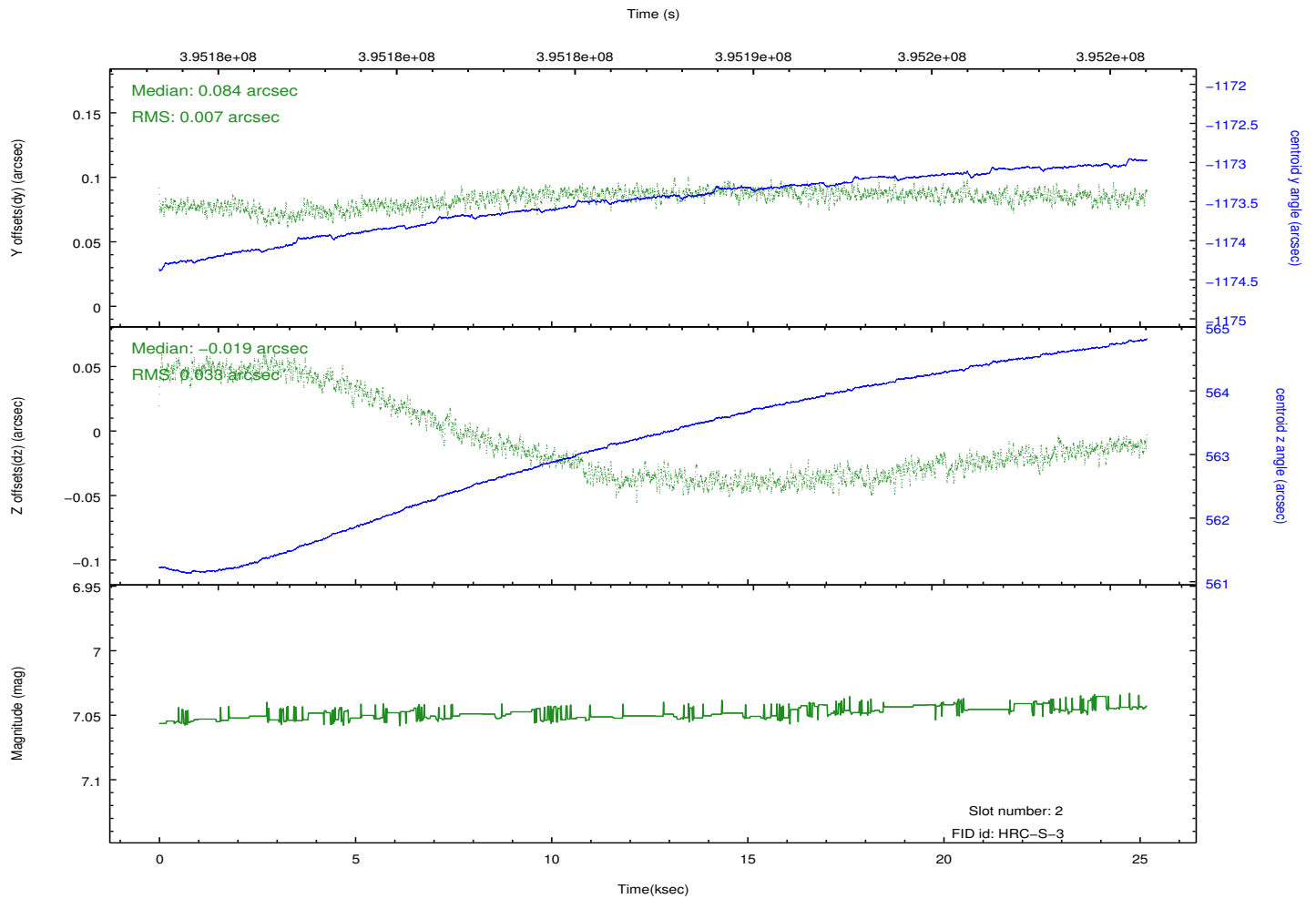
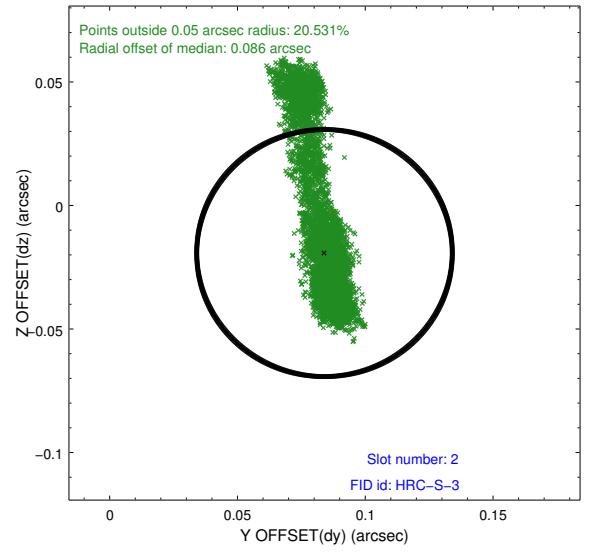
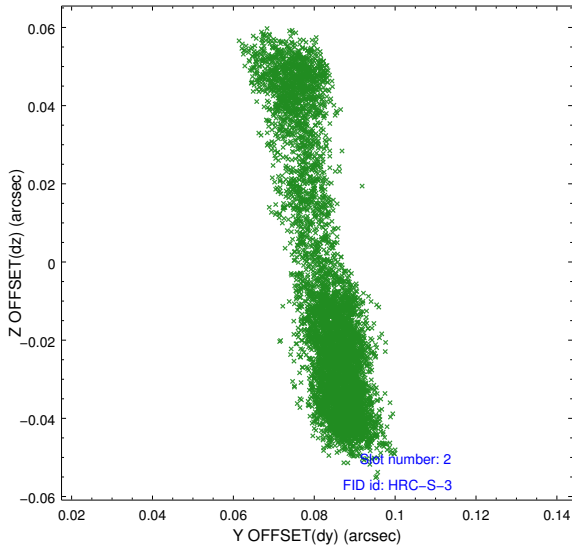
2.5.1 Slot 0



2.5.2 Slot 1

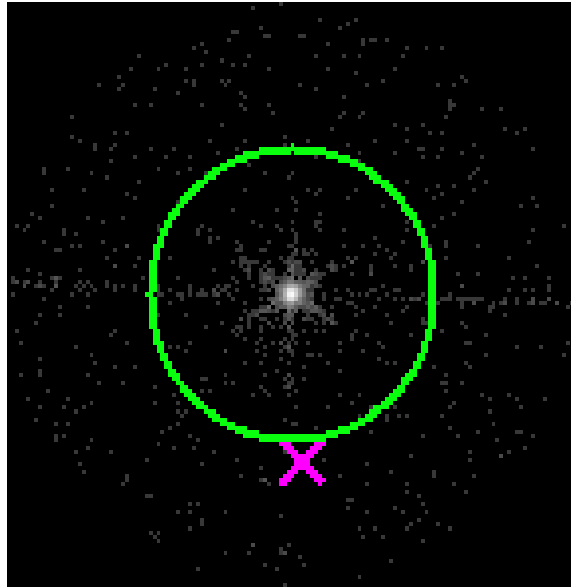


2.5.3 Slot 2

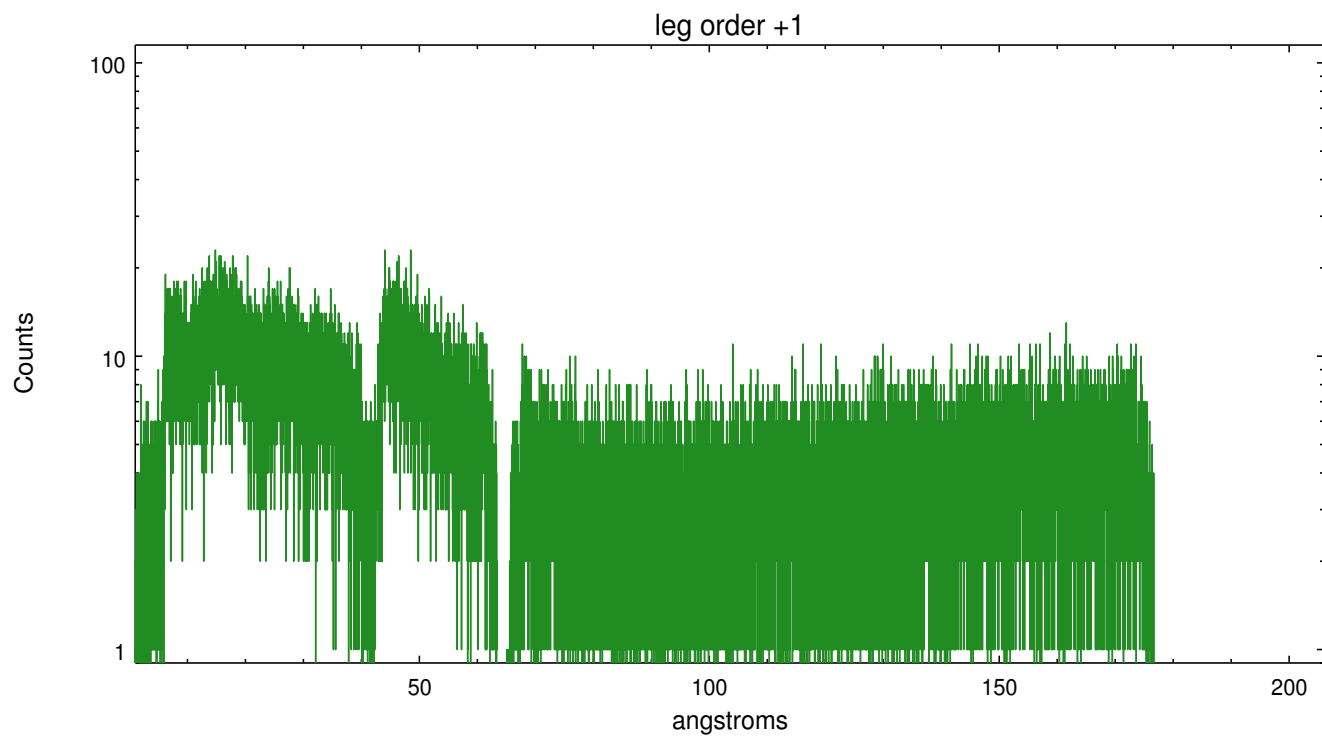
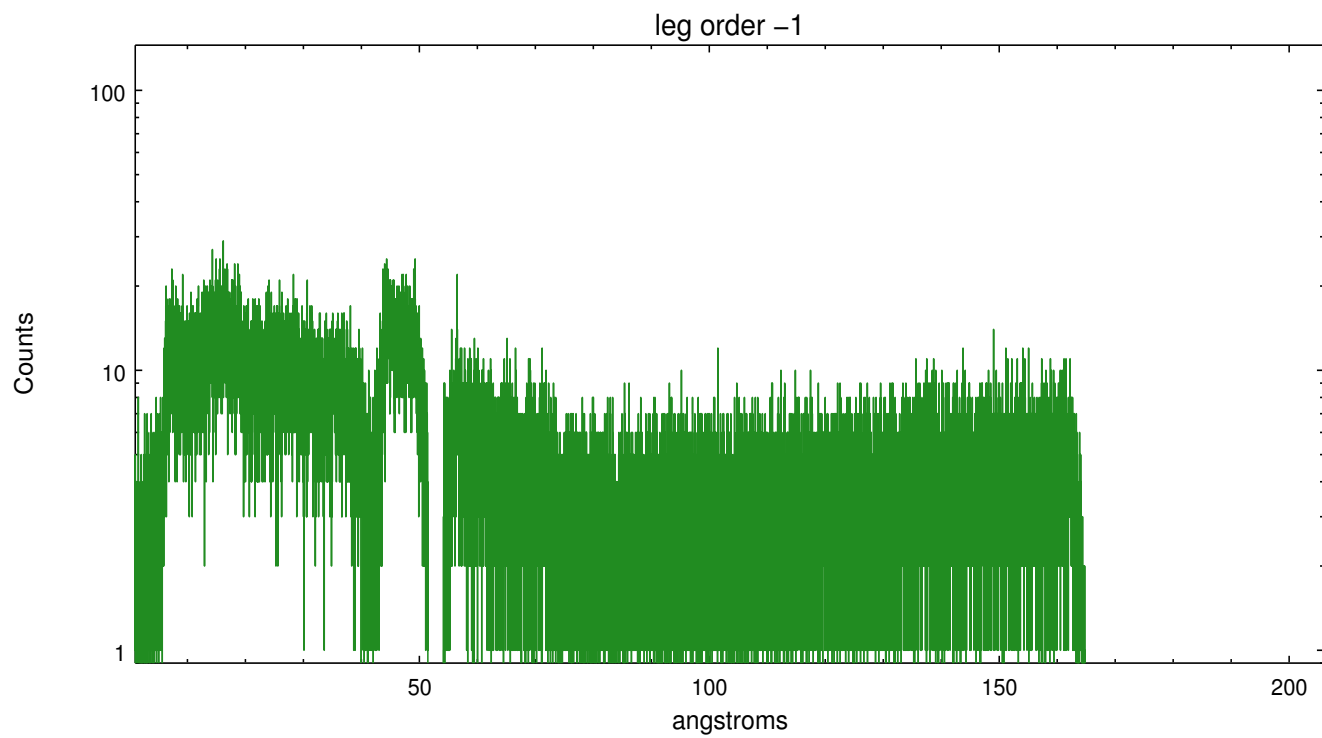


3 Gratings

3.1 LETG Arm



LETG Zero Order



A Summary

A.1 Status

V&V Scientist	Joy Nichols
V&V Date (YYYY-MM-DD)	2012.07.03
V&V Edition	1
V&V Disposition and Status	OK
V&V Charge Time	25.179126276851

A.2 Comments