

V&V Reference Report

L2 ASCDS Version : 8.4.5

Observation 12212 - L2 Version 2
Chandra X-Ray Center

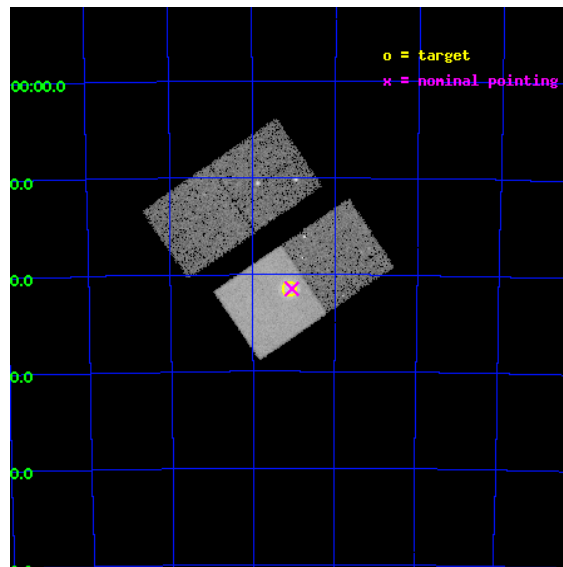
L2 Processing Date : Jun 25 2012

Contents

1	Front	2
2	OBI	3
2.1	OBI	3
2.1.1	Images	3
2.1.2	Bias	3
2.1.3	Parameters	4
2.1.4	Events	4
2.2	Compared Parameters	5
2.3	Aspect	6
2.4	Star Slots	9
2.4.1	Slot 3	9
2.4.2	Slot 4	10
2.4.3	Slot 5	11
2.4.4	Slot 6	12
2.4.5	Slot 7	13
2.5	FID Slots	14
2.5.1	Slot 0	14
2.5.2	Slot 1	15
2.5.3	Slot 2	16
A	Summary	17
A.1	Status	17
A.2	Comments	17

1 Front

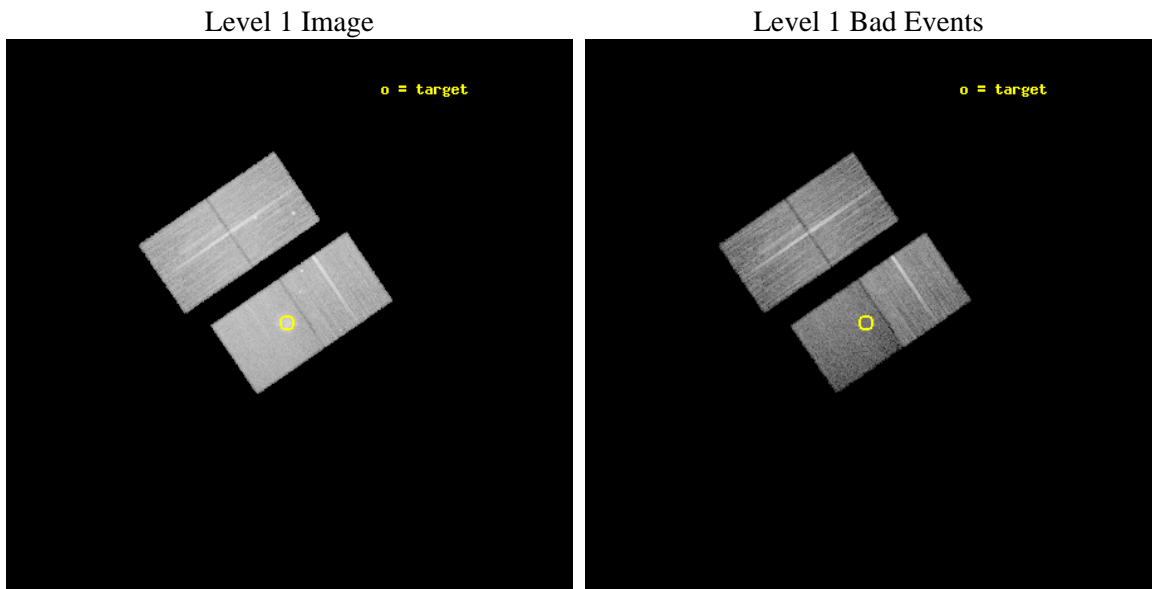
seq_num	501185	Sequence number
obs_id	12212	Observation id
title	A Detailed Study of the Aged O-Rich Supernova Remnant 0049-73.6	Pr
observer	DR. Sangwook Park	Principal investigator
object	SNR 0049-73.6	Source name
dtcycle	0	
cycle	P	events from which exps? Prim/Second/Both
ra_targ	12.779167	Observer's specified target RA [deg]
dec_targ	-73.358333	Observer's specified target Dec [deg]
ra_nom	12.76235228327	Nominal RA [deg]
dec_nom	-73.358094537071	Nominal Dec [deg]
roll_nom	145.64051695659	Nominal Roll [deg]
revision	2	Processing version of data
ontime	18549.43782419	Sum of GTIs [s]
livetime	18307.075763119	Livetime [s]
ontime2	18549.31470418	Sum of GTIs [s]
ontime3	18549.355744183	Sum of GTIs [s]
ontime6	18543.114843428	Sum of GTIs [s]
ontime7	18549.43782419	Sum of GTIs [s]
l2events	107327	Number of level 2 events



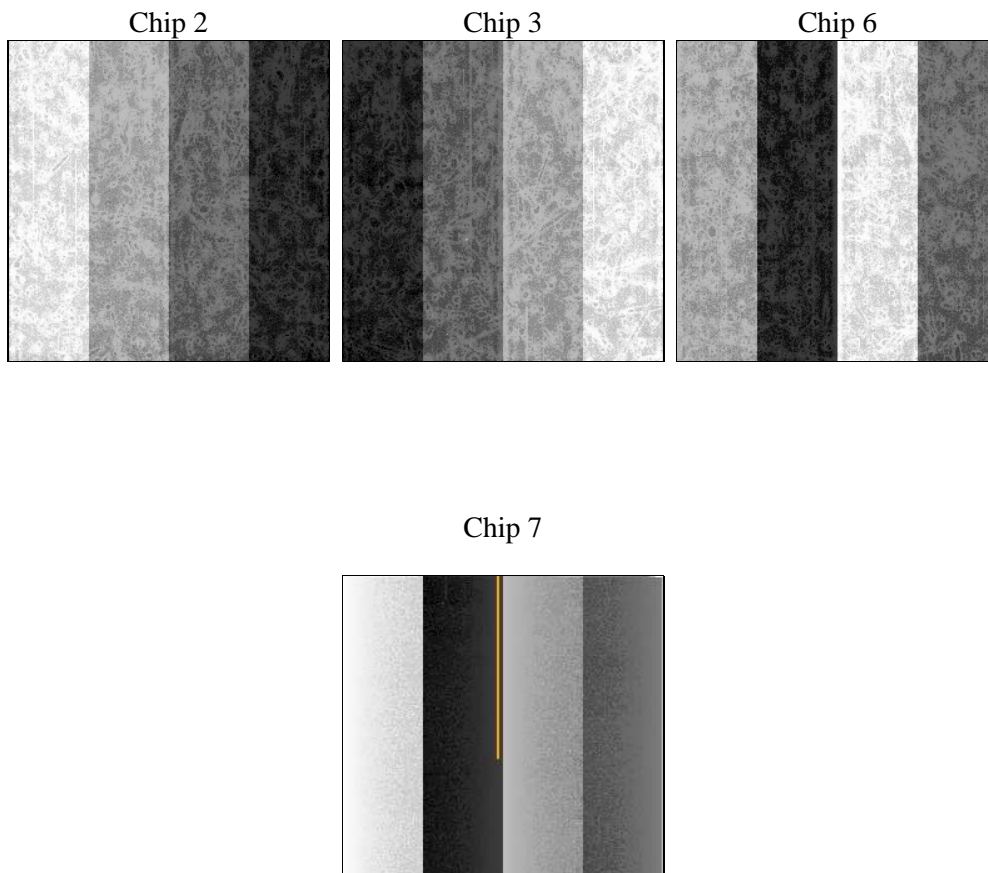
2 OBI

2.1 OBI

2.1.1 Images



2.1.2 Bias



2.1.3 Parameters

obi_num	0	Obi number	sched_exp_time	18500.000000	[s] Scheduled observation exposure time
ascdsver	8.4.5	Processing system revision	ontime	18549.43782419	Sum of GTIs [s]
caldbver	4.4.10	 	ontime2	18549.31470418	Sum of GTIs [s]
date	2012-06-26T00:24:49	Date and time of file creation	ontime3	18549.355744183	Sum of GTIs [s]
revision	2	Processing version of data	ontime6	18543.114843428	Sum of GTIs [s]
			ontime7	18549.43782419	Sum of GTIs [s]
			l1events	538697	Number of level 1 events

2.1.4 Events

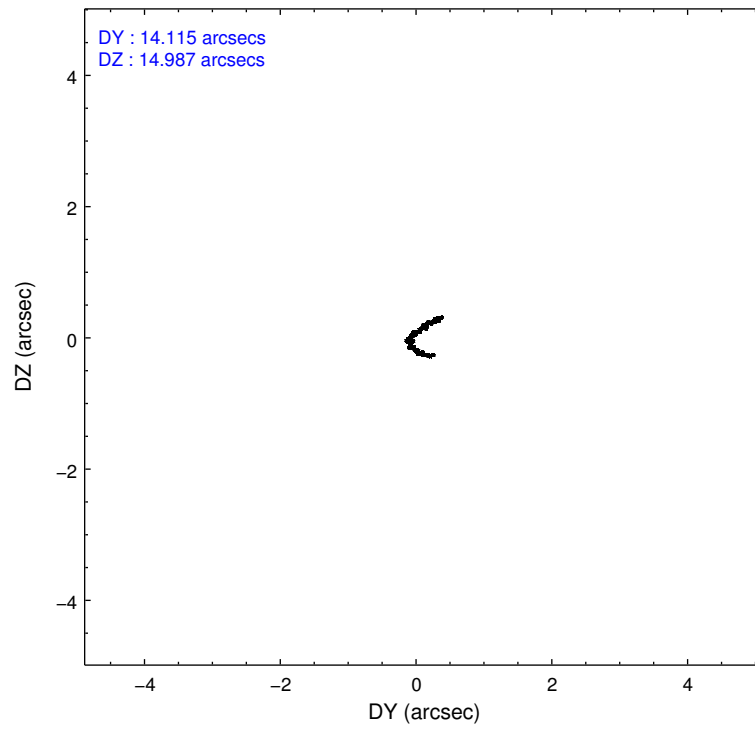
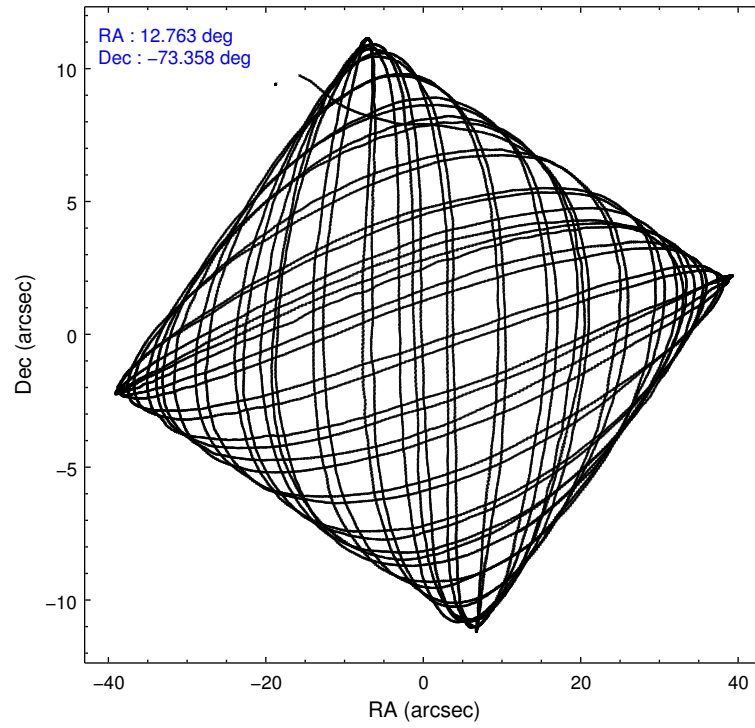
	ccd 2	ccd 3	ccd 6	ccd 7
level 1 events	135571	129879	131571	141676
rejected events	120470	116965	115866	69520
rejected %	88%	90%	88%	49%

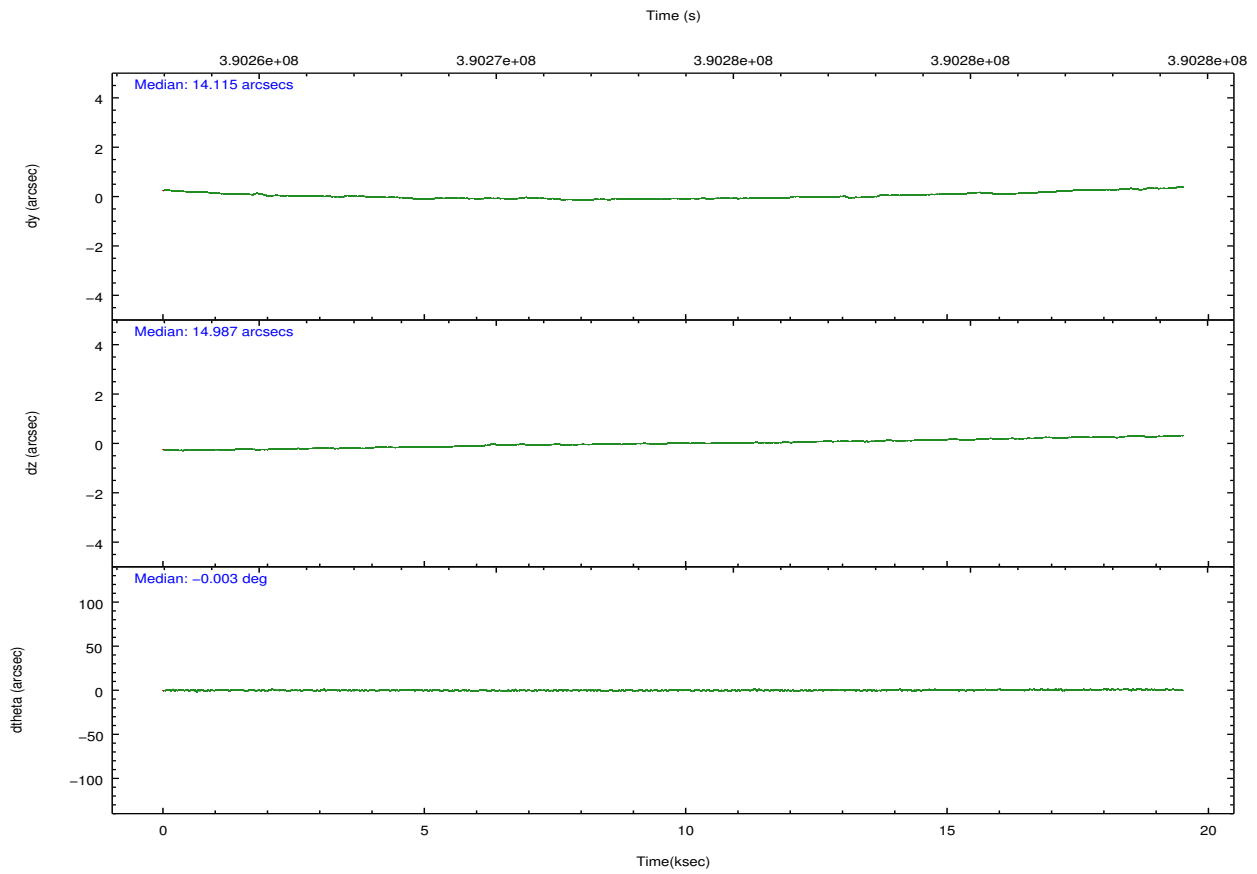
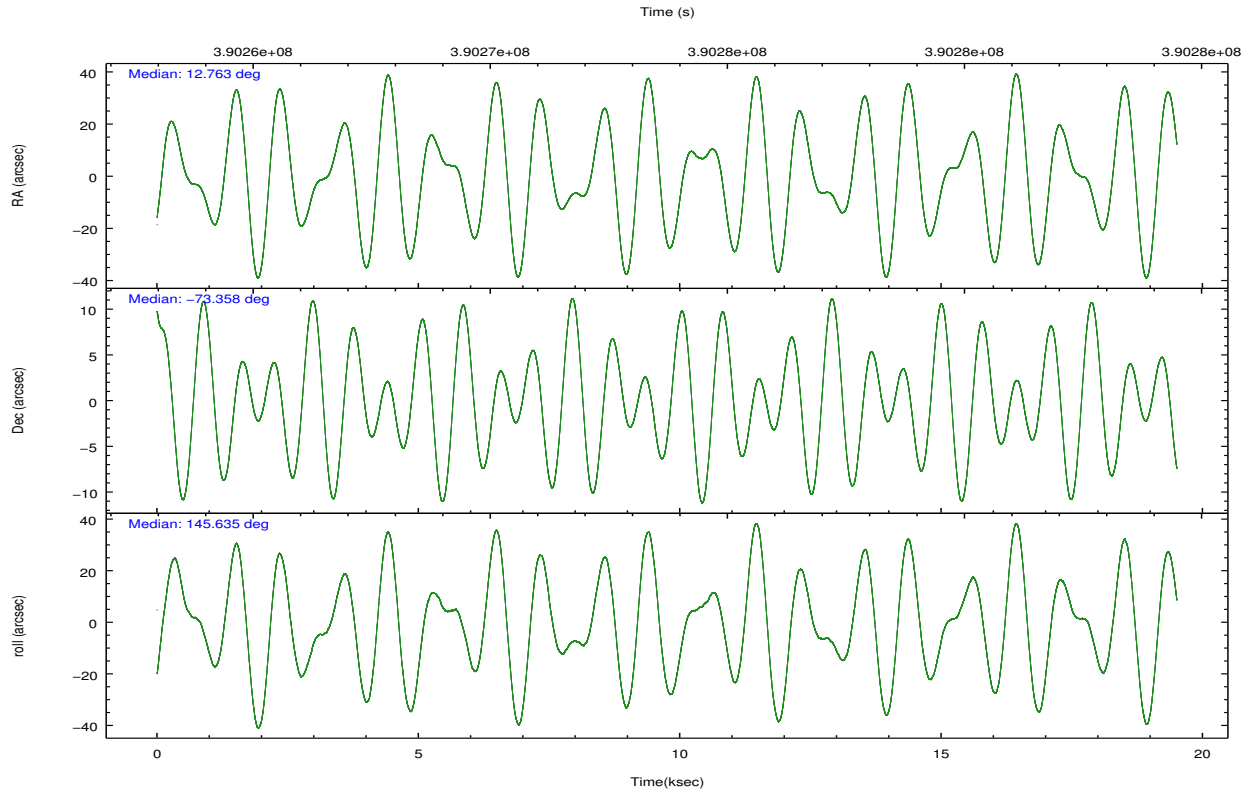
	ccd 2	ccd 3	ccd 6	ccd 7
grade 0 events	6260	4767	6217	8745
	4%	3%	4%	6%
grade 1 events	88	81	75	253
	0%	0%	0%	0%
grade 2 events	3463	2785	3370	15525
	2%	2%	2%	10%
grade 3 events	1480	1514	1633	6841
	1%	1%	1%	4%
grade 4 events	1445	1412	1507	6702
	1%	1%	1%	4%
grade 5 events	4076	4938	5044	14436
	3%	3%	3%	10%
grade 6 events	2457	2439	2981	34352
	1%	1%	2%	24%
grade 7 events	116302	111943	110744	54822
	85%	86%	84%	38%

2.2 Compared Parameters

Parameter	Planned	Actual	Parameter	Planned	Actual
Instrument	ACIS	ACIS	Obspar format version number	7	7
Detector	ACIS-2367	ACIS-2367	Obspar file type	PREDICTED	ACTUAL
Grating	NONE	NONE	Obspar update status	NONE	UPDATED
Data mode	VFAINT	VFAINT	Number of optional ACIS chips dropped	0	0
Observation mode	POINTING	POINTING	On-chip summing requested	N	N
[deg] Pointing RA	12.857551	12.76235228327016	Subarray requested	NONE	NONE
[deg] Pointing Dec	-73.359794	-73.35809453707094	Alternating exposures requested	N	N
[deg] Pointing Roll	145.575103	145.6405169565913	[s] Primary exposure time	0.000000	3.1
[mm] SIM focus pos	-0.684267	-0.6828225247311905			
[mm] SIM defocus	0	0.001444936568705701			
[mm] SIM translation stage pos	-190.132523	-190.1400660498719			
[mm] SIM translation stage offset	0	0.00754346686406393			
[s] Observation start time (MET)	390264981.184000	390263115.63628			
Observation start date	2010-05-14T22:55:15	2010-05-14T22:25:15			
[s] Observation end time (MET)	390283481.184000	390284866.64989			
Observation end date	2010-05-15T04:03:35	2010-05-15T04:27:46			
Read mode	TIMED	TIMED			

2.3 Aspect



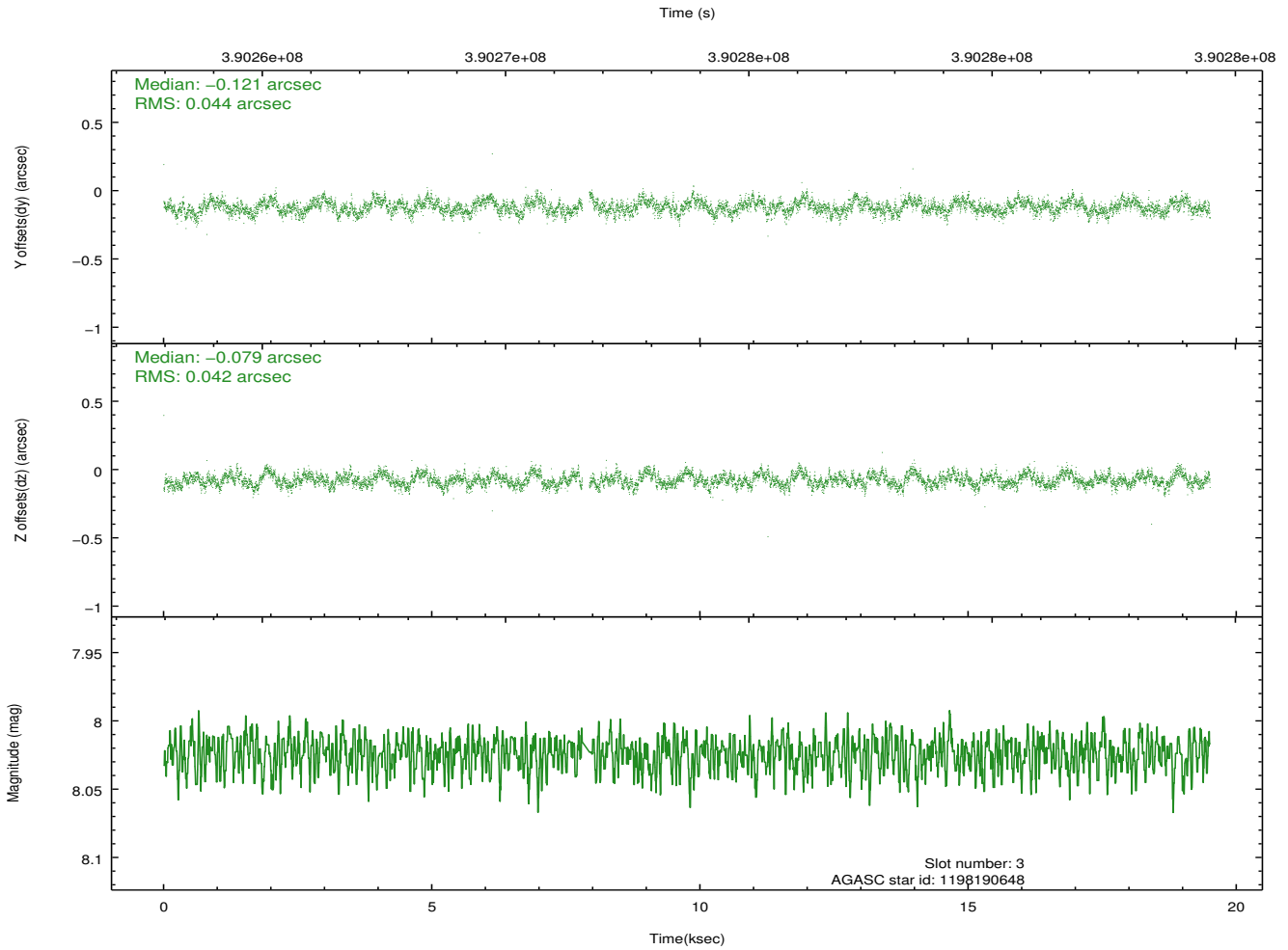
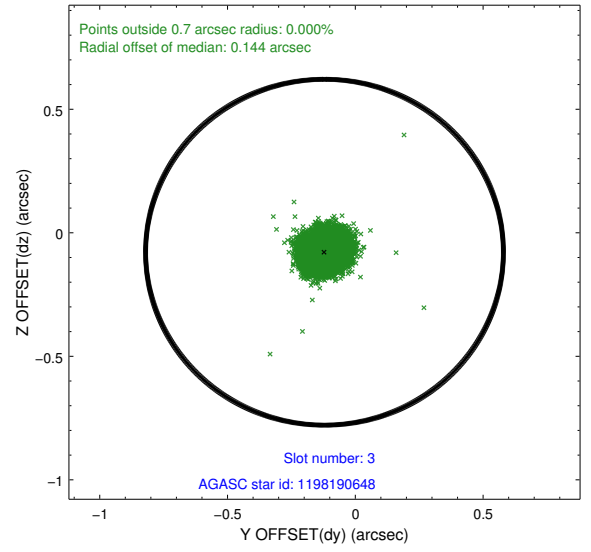
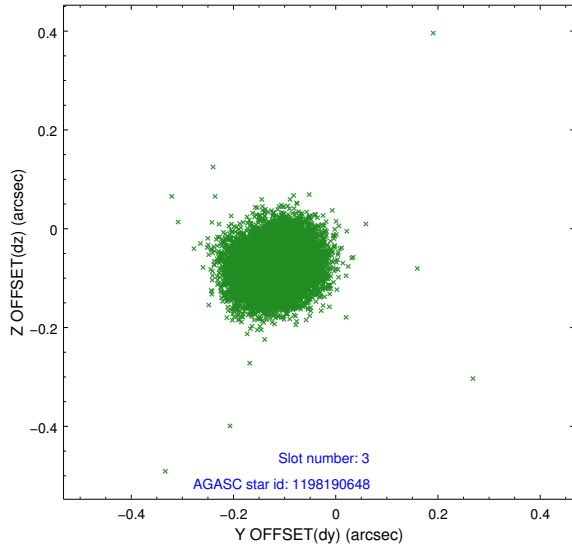


Slot Statistics

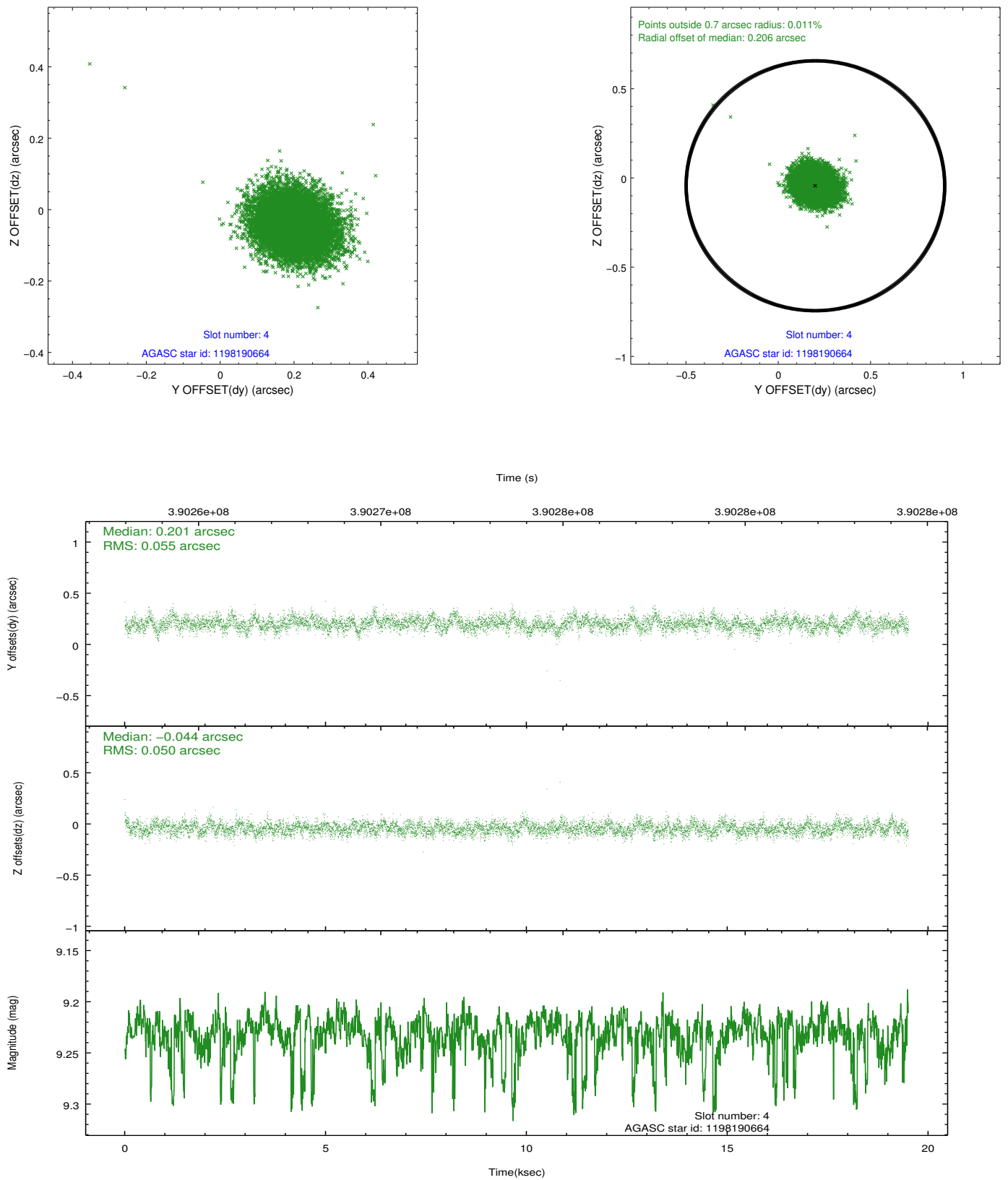
slot	status	id	mag	n_pts	med_dy	med_dz	dr1	dr2	ra	dec	mean_y	mean_z
0	FID	ACIS-S-1	6.96	4756	0.036	-0.002	0.013	0.021	0.000000	0.000000	928.91	-1732.03
1	FID	ACIS-S-2	6.89	4759	-0.156	-0.068	0.009	0.016	0.000000	0.000000	-767.08	-1736.79
2	FID	ACIS-S-4	6.97	4759	0.094	0.076	0.009	0.015	0.000000	0.000000	2146.18	171.97
3	GUIDE	1198190648	8.02	9454	-0.121	-0.079	0.065	0.103	12.344115	-73.478663	190.44	652.33
4	GUIDE	1198190664	9.23	9475	0.201	-0.044	0.079	0.129	14.057016	-73.825958	-1947.70	714.60
5	GUIDE	1198191824	9.33	9503	-0.007	-0.046	0.119	0.183	11.519918	-73.478175	879.91	1138.56
6	GUIDE	1198192408	9.41	9471	-0.125	0.209	0.106	0.169	12.860639	-72.678863	1383.47	-2023.16
7	GUIDE	1198192456	8.58	9511	0.053	-0.040	0.060	0.099	13.422921	-73.869405	-1504.65	1195.80

2.4 Star Slots

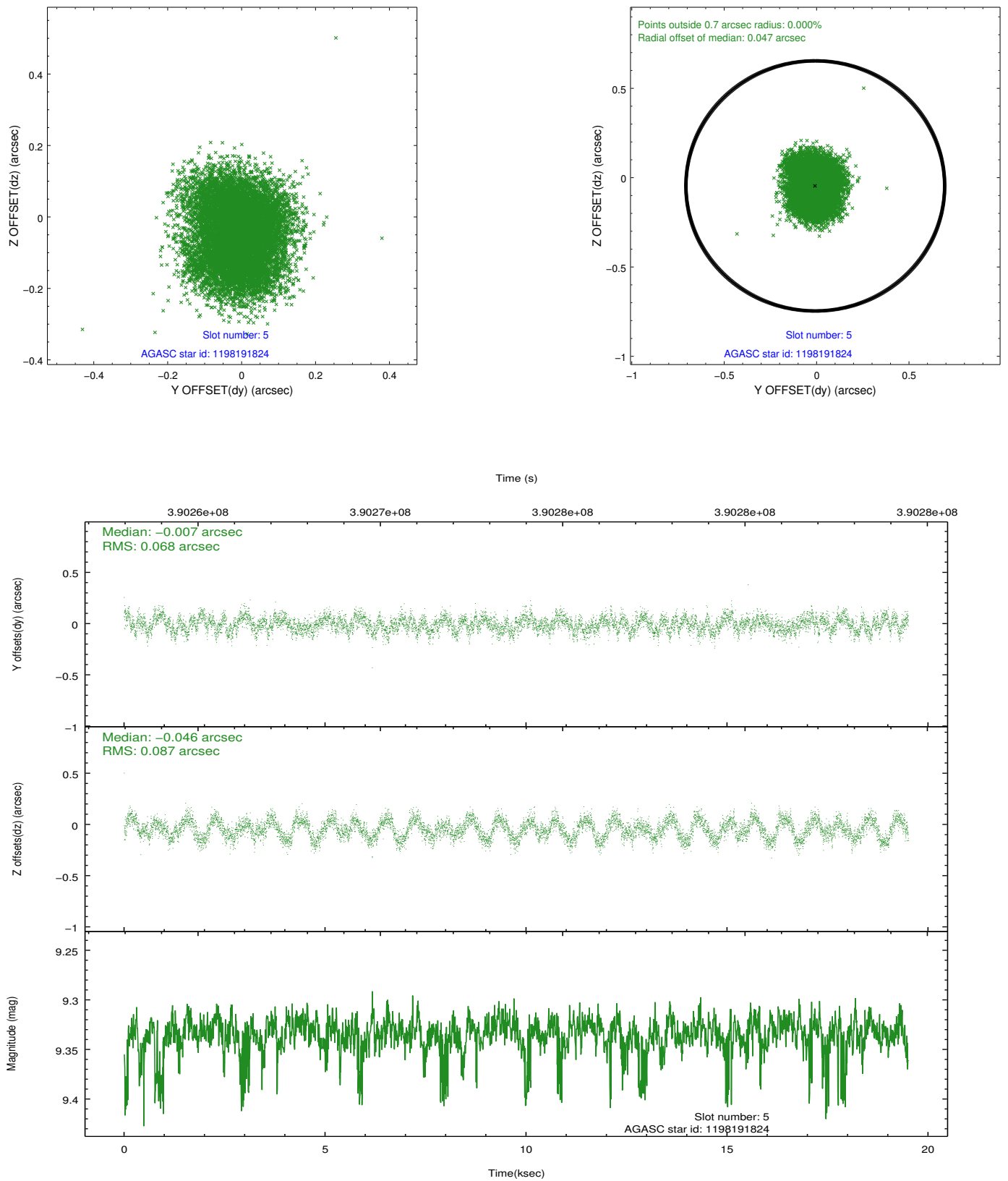
2.4.1 Slot 3



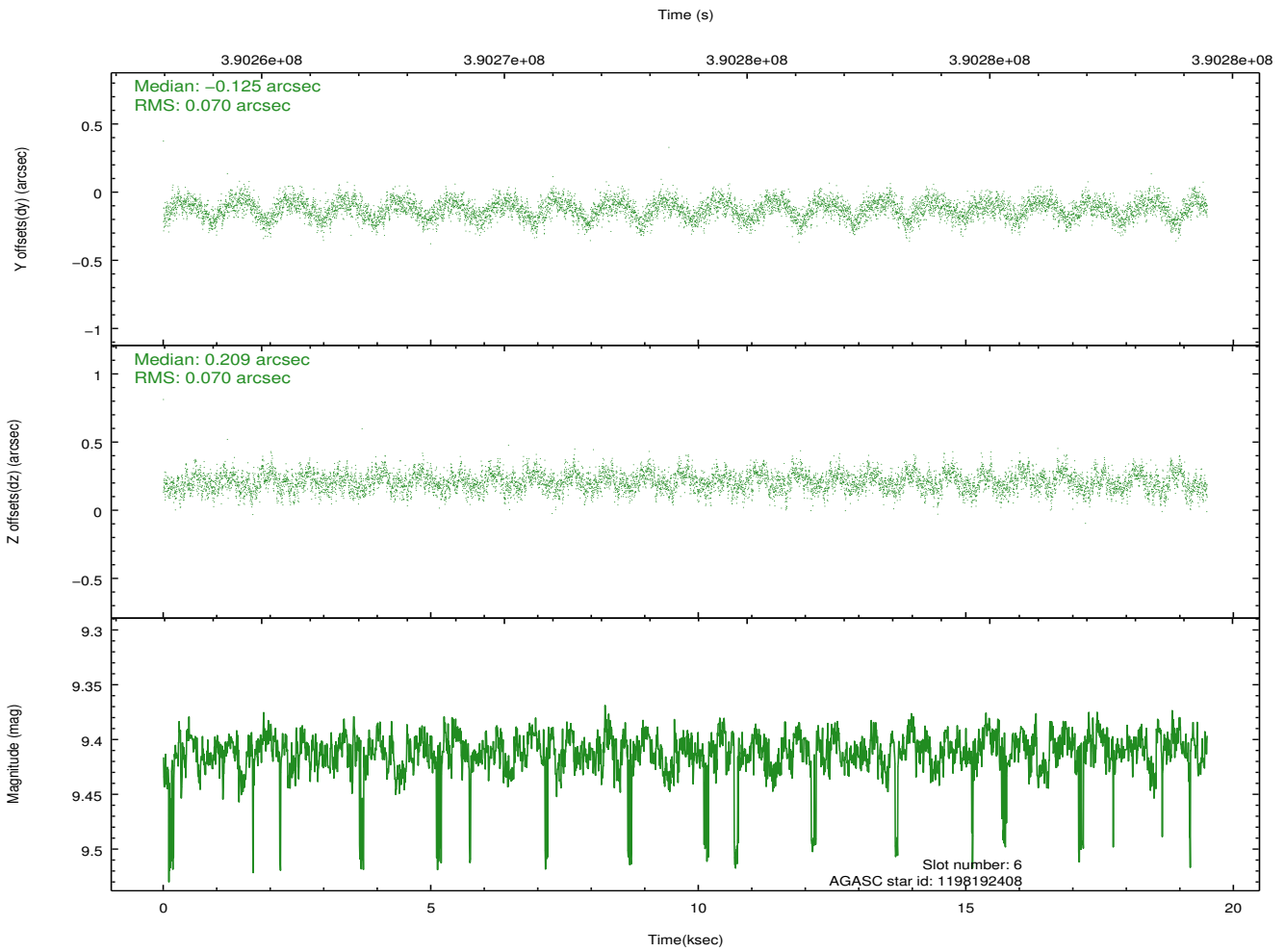
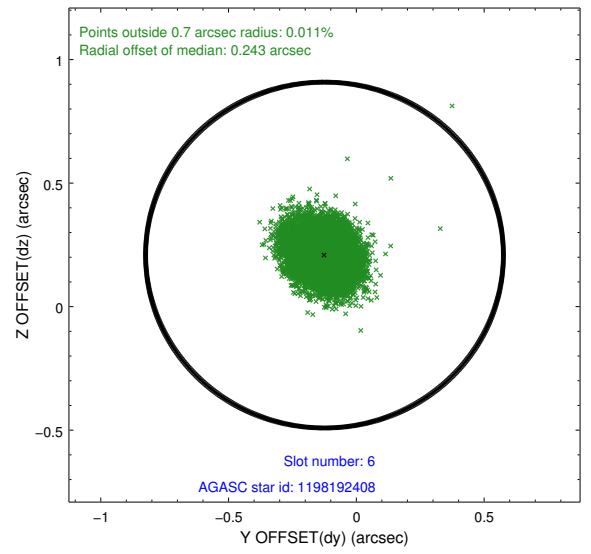
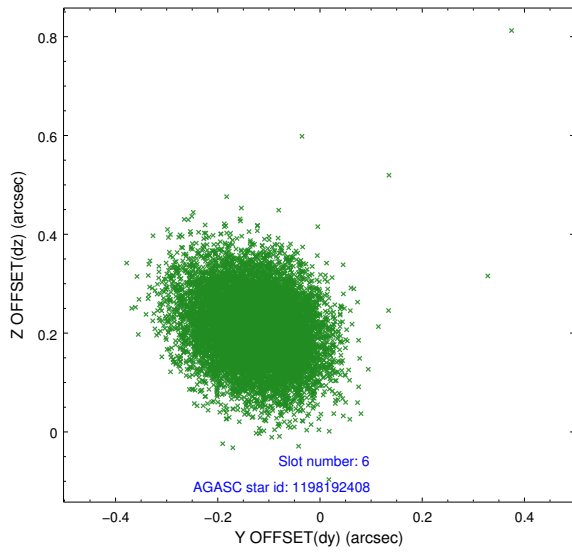
2.4.2 Slot 4



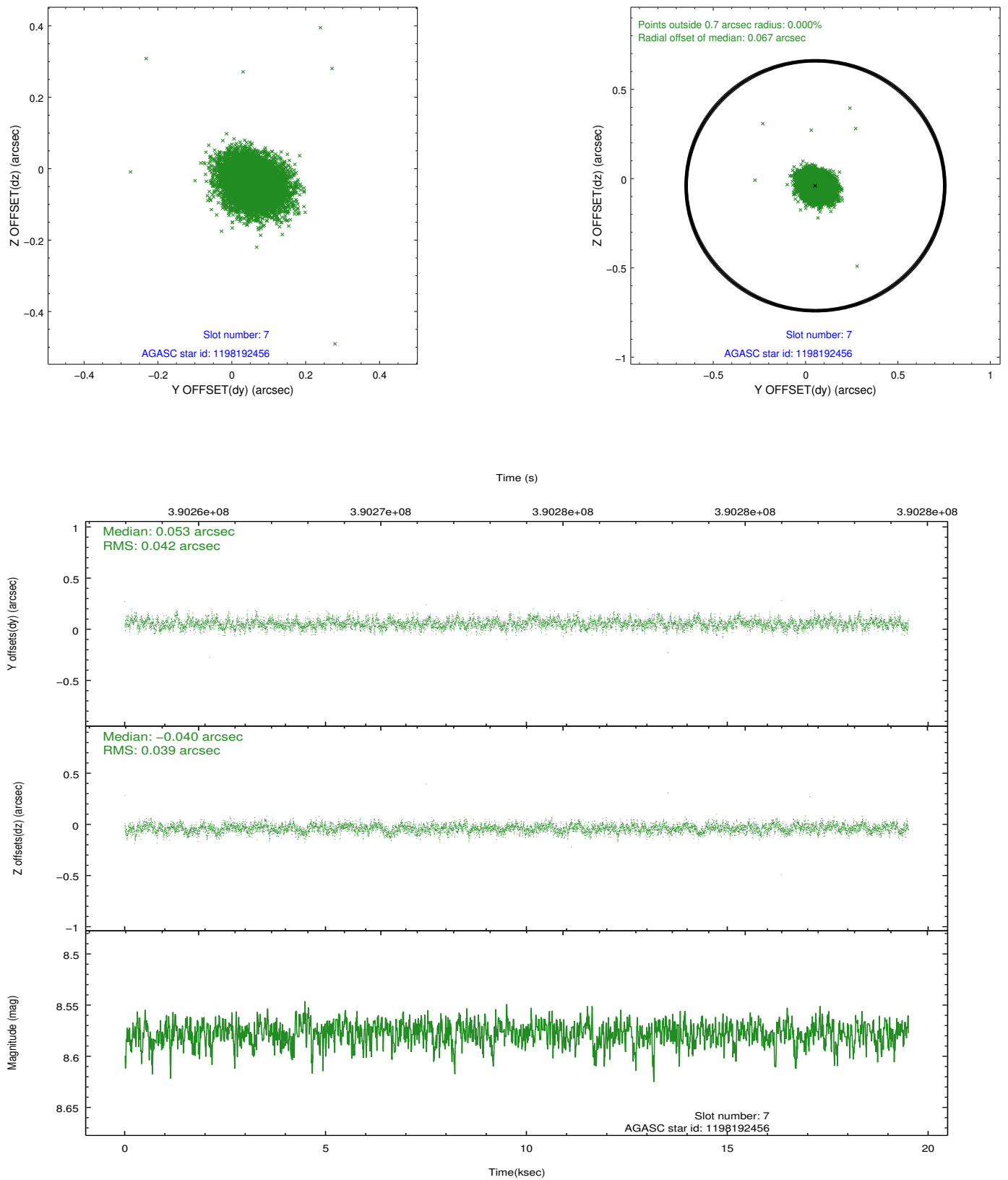
2.4.3 Slot 5



2.4.4 Slot 6

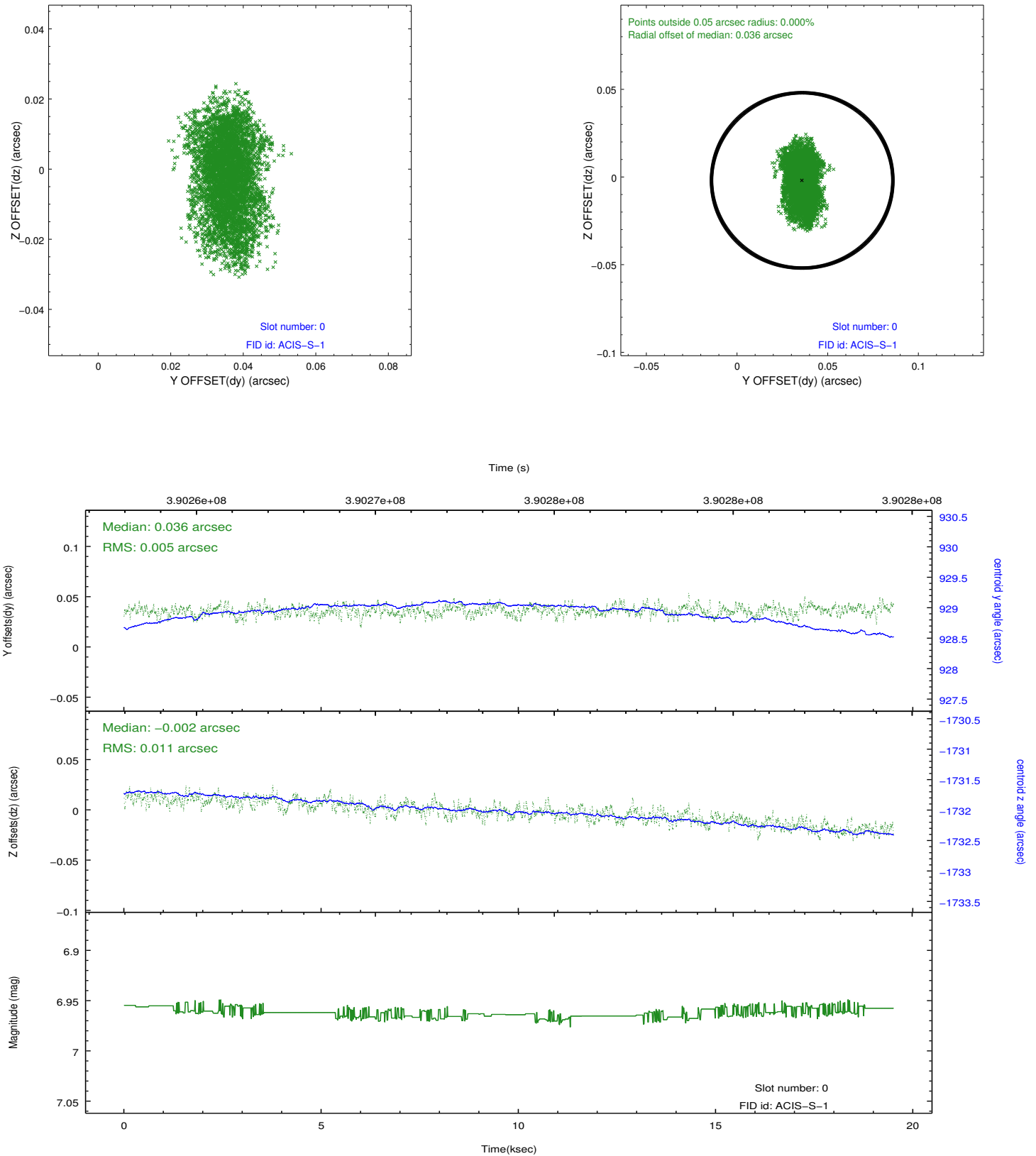


2.4.5 Slot 7

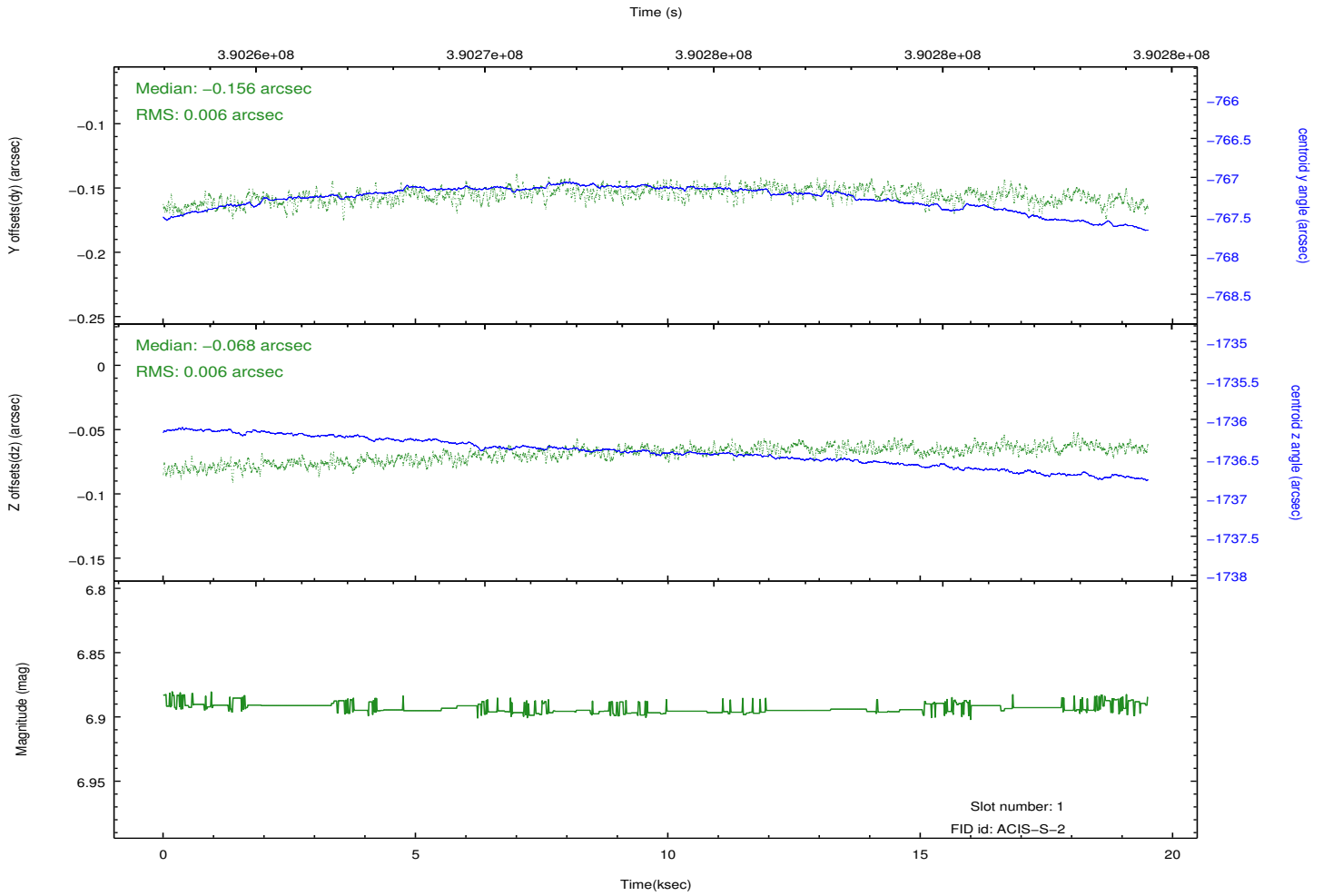
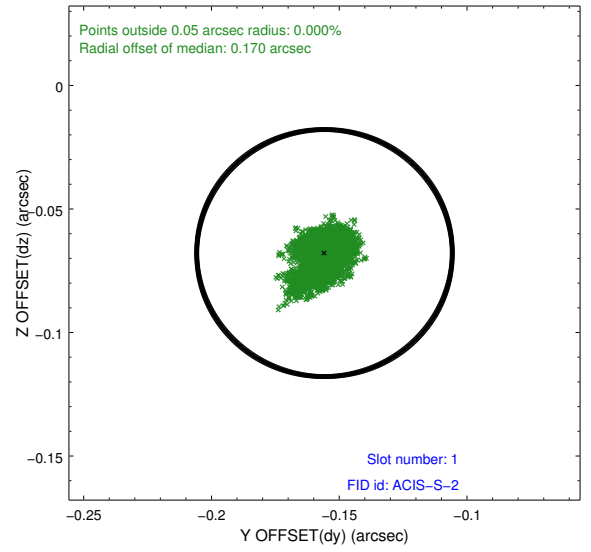
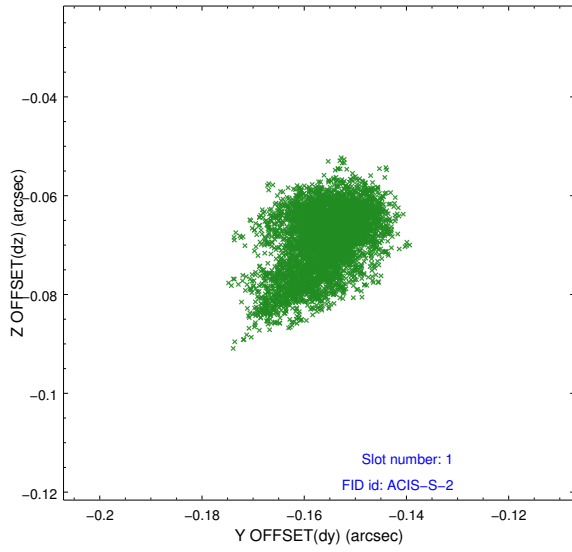


2.5 FID Slots

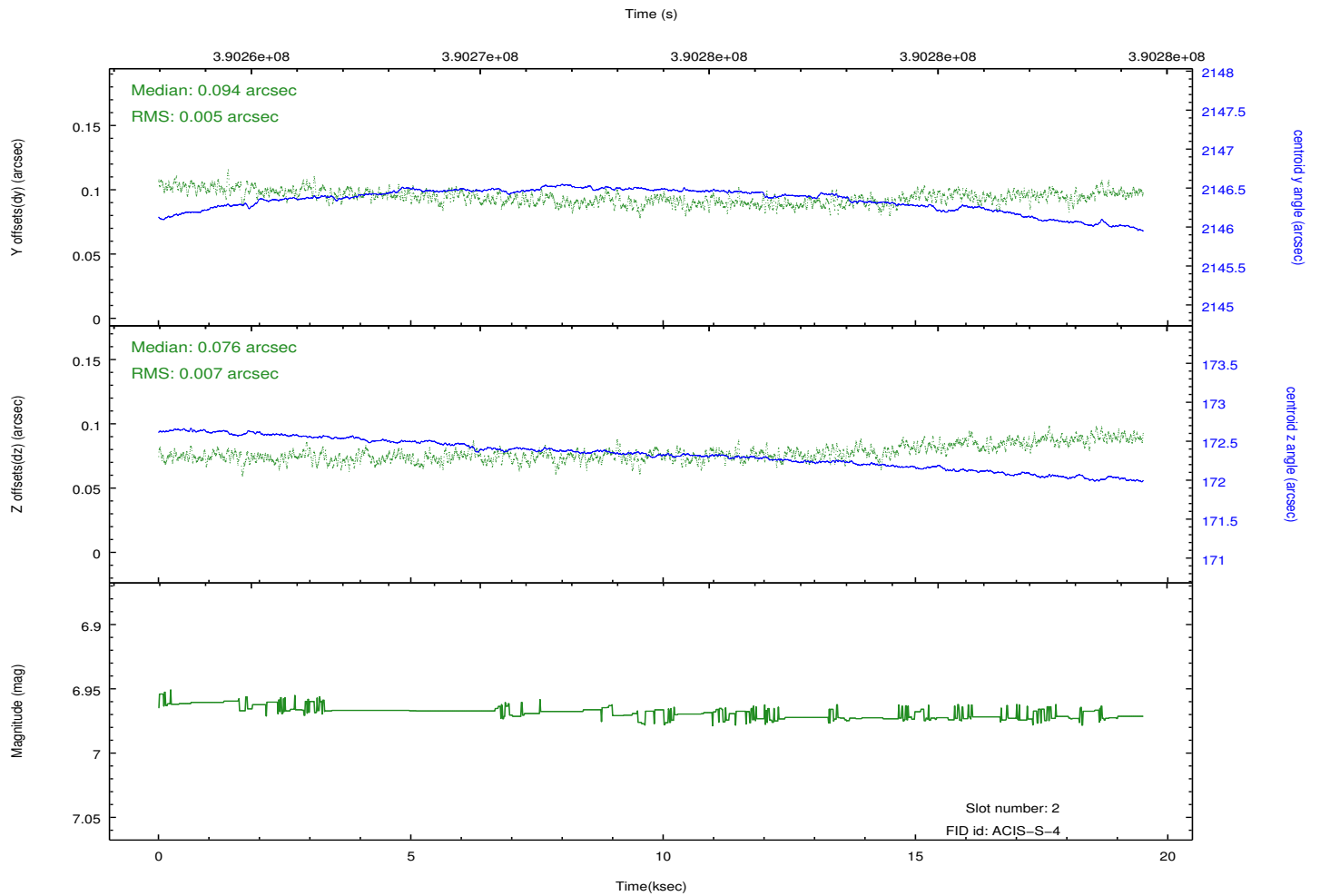
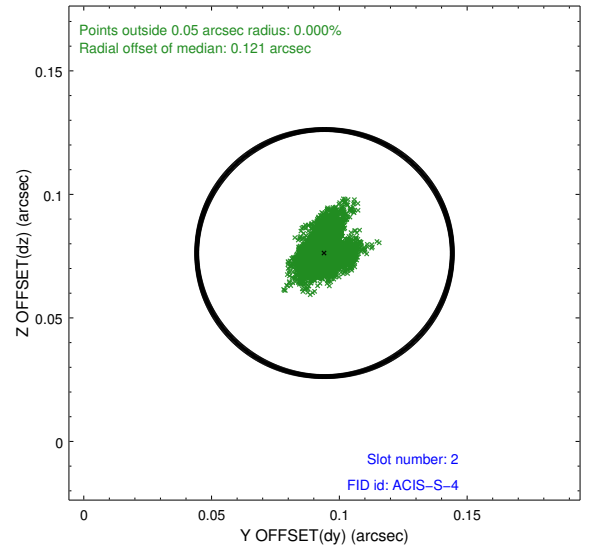
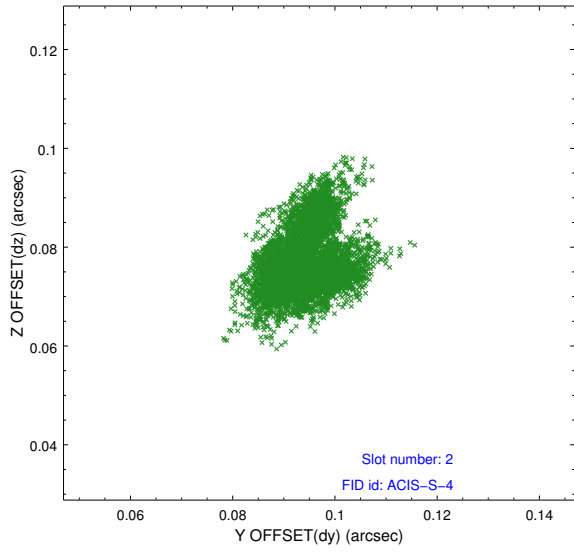
2.5.1 Slot 0



2.5.2 Slot 1



2.5.3 Slot 2



A Summary

A.1 Status

V&V Scientist	Beth Sundheim
V&V Date (YYYY-MM-DD)	2012.07.03
V&V Edition	1
V&V Disposition and Status	OK
V&V Charge Time	18.549437828362

A.2 Comments