

# V&V Reference Report

## L2 ASCDS Version : 8.4.5

Observation 12242 - L2 Version 2  
Chandra X-Ray Center

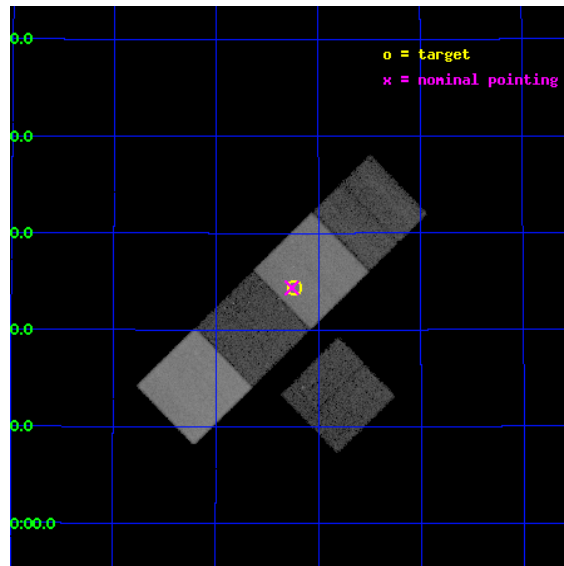
L2 Processing Date : Jul 2 2012

## Contents

<b>1</b>	<b>Front</b>	<b>2</b>
<b>2</b>	<b>OBI</b>	<b>3</b>
2.1	OBI . . . . .	3
2.1.1	Images . . . . .	3
2.1.2	Bias . . . . .	3
2.1.3	Parameters . . . . .	4
2.1.4	Events . . . . .	4
2.2	Compared Parameters . . . . .	5
2.3	Aspect . . . . .	6
2.4	Star Slots . . . . .	9
2.4.1	Slot 3 . . . . .	9
2.4.2	Slot 4 . . . . .	10
2.4.3	Slot 5 . . . . .	11
2.4.4	Slot 6 . . . . .	12
2.4.5	Slot 7 . . . . .	13
2.5	FID Slots . . . . .	14
2.5.1	Slot 0 . . . . .	14
2.5.2	Slot 1 . . . . .	15
2.5.3	Slot 2 . . . . .	16
<b>A</b>	<b>Summary</b>	<b>17</b>
A.1	Status . . . . .	17
A.2	Comments . . . . .	17

# 1 Front

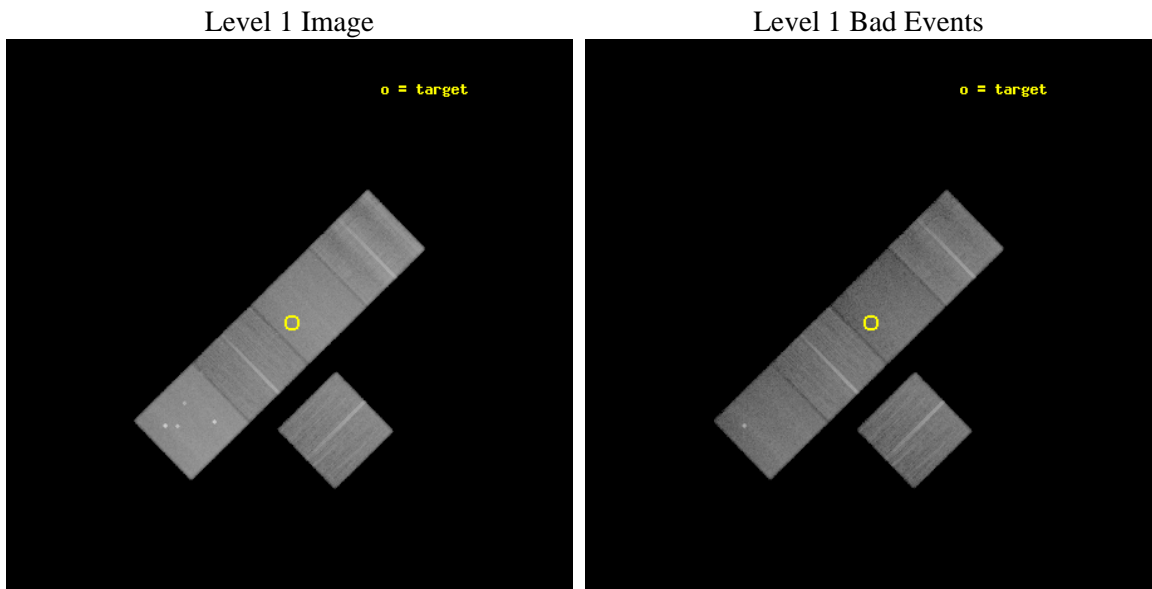
seq_num	702339	Sequence number
obs_id	12242	Observation id
title	Is the binary AGN in the galaxy pair UGC 08327 activating or quiescing?	Proposal title
observer	Dr. Francesca Panessa	Principal investigator
object	UGC 08327	Source name
dtcycle	0	&#160
cycle	P	events from which exps? Prim/Second/Both
ra_targ	198.807917	Observer's specified target RA [deg]
dec_targ	44.407222	Observer's specified target Dec [deg]
ra_nom	198.8145636707	Nominal RA [deg]
dec_nom	44.406153440242	Nominal Dec [deg]
roll_nom	315.61806026121	Nominal Roll [deg]
revision	2	Processing version of data
ontime	30039.000231028	Sum of GTIs [s]
livetime	29646.518578619	Livetime [s]
ontime2	30038.985666931	Sum of GTIs [s]
ontime5	30039.000231028	Sum of GTIs [s]
ontime6	30039.000231028	Sum of GTIs [s]
ontime7	30039.000231028	Sum of GTIs [s]
ontime8	30039.000231028	Sum of GTIs [s]
l2events	347021	Number of level 2 events



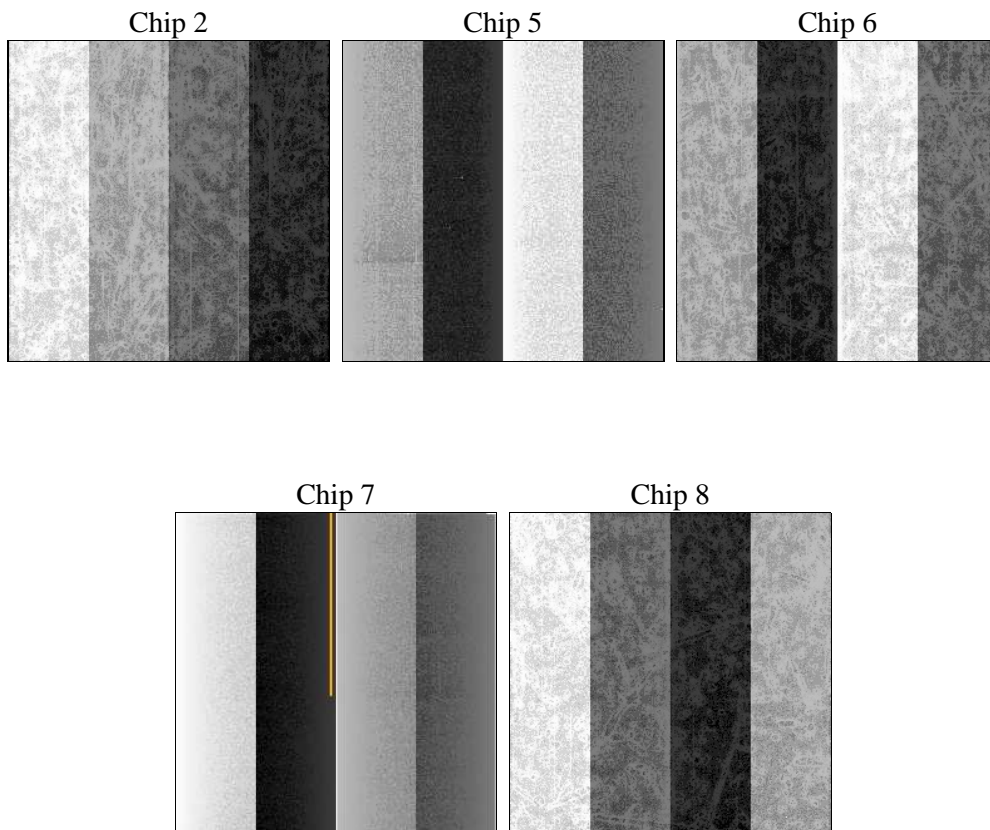
## 2 OBI

### 2.1 OBI

#### 2.1.1 Images



#### 2.1.2 Bias



### 2.1.3 Parameters

obi_num	0	Obi number	sched_exp_time	30000.000000	[s] Scheduled observation exposure time
ascdsver	8.4.5	Processing system revision	ontime	30039.000231028	Sum of GTIs [s]
caldbver	4.5.0	&#160	ontime2	30038.985666931	Sum of GTIs [s]
date	2012-07-02T20:47:02	Date and time of file creation	ontime5	30039.000231028	Sum of GTIs [s]
revision	2	Processing version of data	ontime6	30039.000231028	Sum of GTIs [s]
			ontime7	30039.000231028	Sum of GTIs [s]
			ontime8	30039.000231028	Sum of GTIs [s]
			l1events	1371110	Number of level 1 events

### 2.1.4 Events

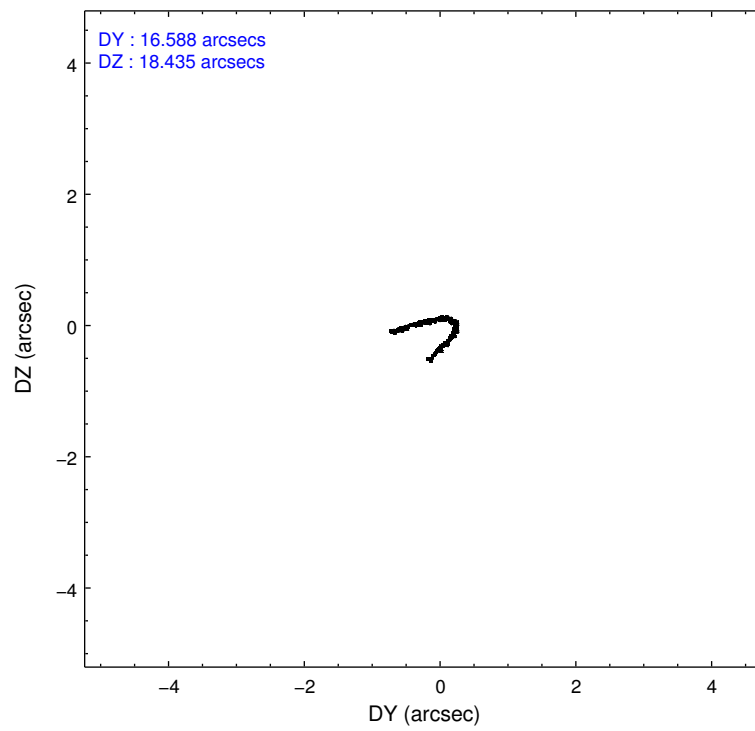
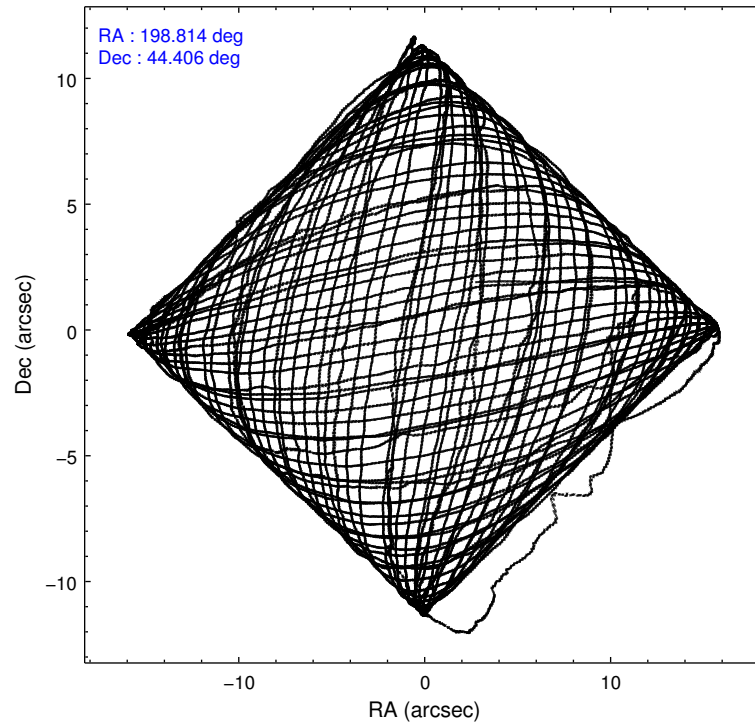
	ccd 2	ccd 5	ccd 6	ccd 7	ccd 8
level 1 events	225432	345884	225412	278611	295771
rejected events	201827	173630	200349	151070	216205
rejected %	89%	50%	88%	54%	73%

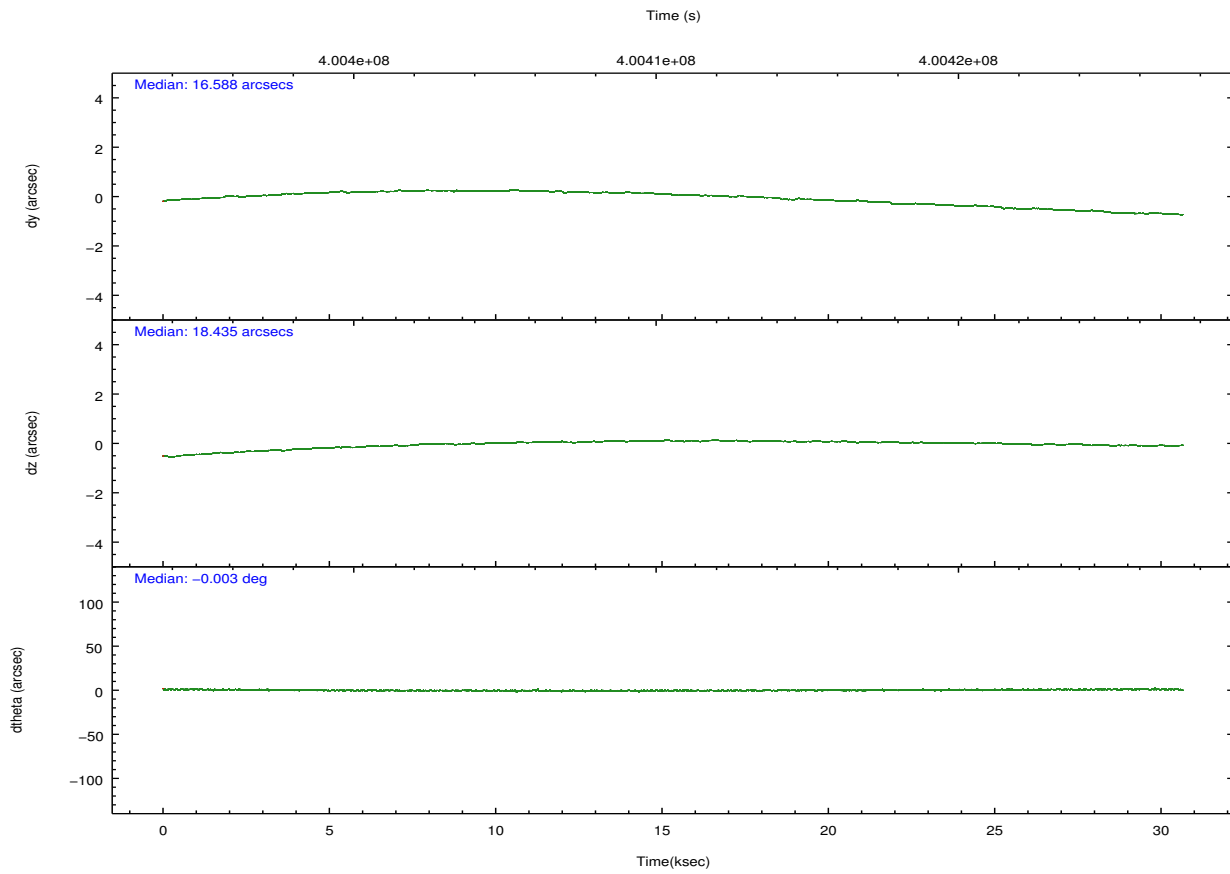
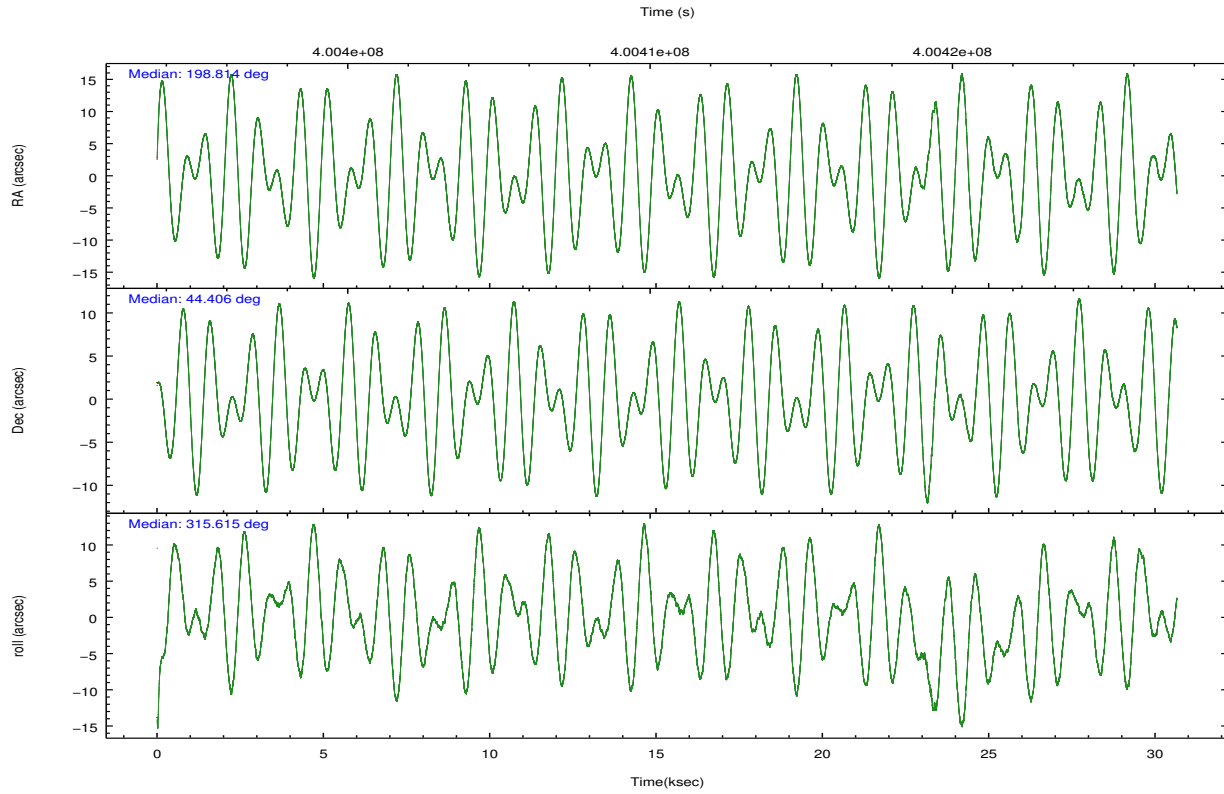
	ccd 2	ccd 5	ccd 6	ccd 7	ccd 8
grade 0 events	8247	20903	8548	12103	23917
	3%	6%	3%	4%	8%
grade 1 events	122	1739	111	420	246
	0%	0%	0%	0%	0%
grade 2 events	5913	50398	5812	25913	18057
	2%	14%	2%	9%	6%
grade 3 events	2536	6411	2628	11440	8585
	1%	1%	1%	4%	2%
grade 4 events	2471	6232	2518	11297	8147
	1%	1%	1%	4%	2%
grade 5 events	8264	26361	10303	28901	14929
	3%	7%	4%	10%	5%
grade 6 events	4441	88325	5557	66799	20868
	1%	25%	2%	23%	7%
grade 7 events	193438	145515	189935	121738	201022
	85%	42%	84%	43%	67%

## 2.2 Compared Parameters

Parameter	Planned	Actual	Parameter	Planned	Actual
Instrument	ACIS	ACIS	Obspar format version number	7	7
Detector	ACIS-25678	ACIS-25678	Obspar file type	PREDICTED	ACTUAL
Grating	NONE	NONE	Obspar update status	NONE	UPDATED
Data mode	FAINT	FAINT	CCD I0 on	N	N
Observation mode	POINTING	POINTING	CCD I1 on	N	N
[deg] Pointing RA	198.777340	198.8145636707041	CCD I2 on	O2	Y
[deg] Pointing Dec	44.412584	44.40615344024209	CCD I3 on	O1	N
[deg] Pointing Roll	315.487491	315.6180602612081	CCD S0 on	N	N
[mm] SIM focus pos	-0.684267	-0.6828225247311905	CCD S1 on	Y	Y
[mm] SIM defocus	0	0.001444936568705701	CCD S2 on	Y	Y
[mm] SIM translation stage pos	-190.132523	-190.1425803651734	CCD S3 on	Y	Y
[mm] SIM translation stage offset	0	0.01005778216563158	CCD S4 on	Y	Y
[s] Observation start time (MET)	400395890.184000	400394729.16645	CCD S5 on	N	N
Observation start date	2010-09-09T05:03:44	2010-09-09T04:45:29	Number of optional ACIS chips dropped	1	1
[s] Observation end time (MET)	400425890.184000	400426630.75558	On-chip summing requested	N	N
Observation end date	2010-09-09T13:23:44	2010-09-09T13:37:10	Subarray requested	NONE	NONE
Read mode	TIMED	TIMED	Alternating exposures requested	N	N
			[s] Primary exposure time	0.000000	3.1

## 2.3 Aspect



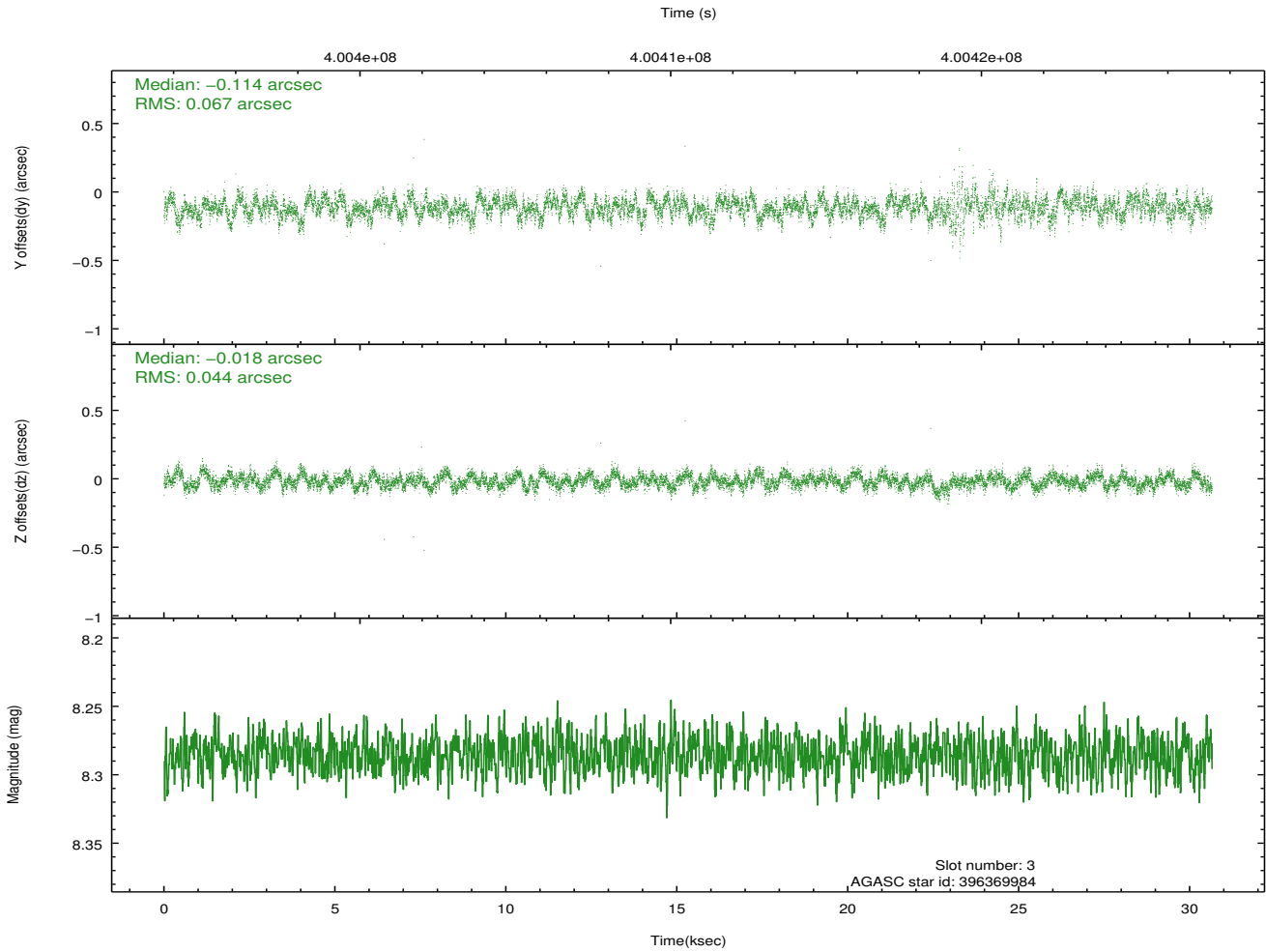
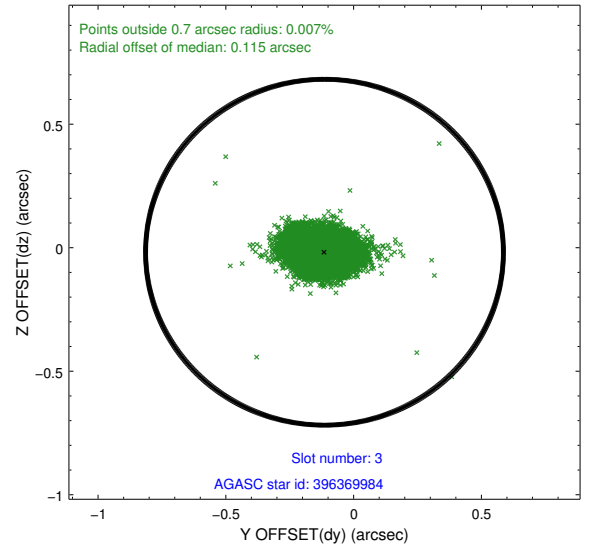
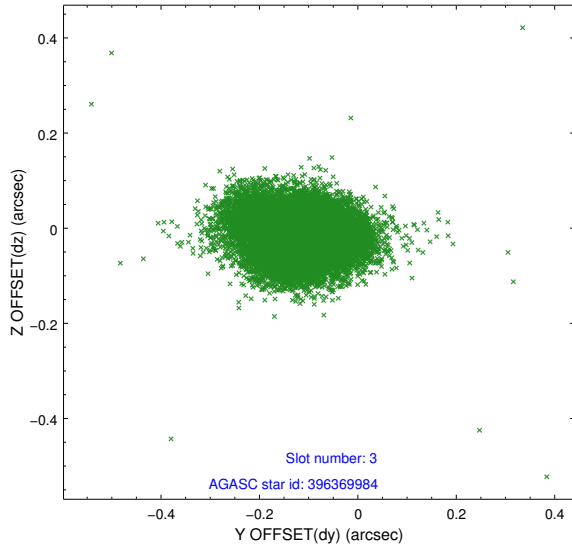


### Slot Statistics

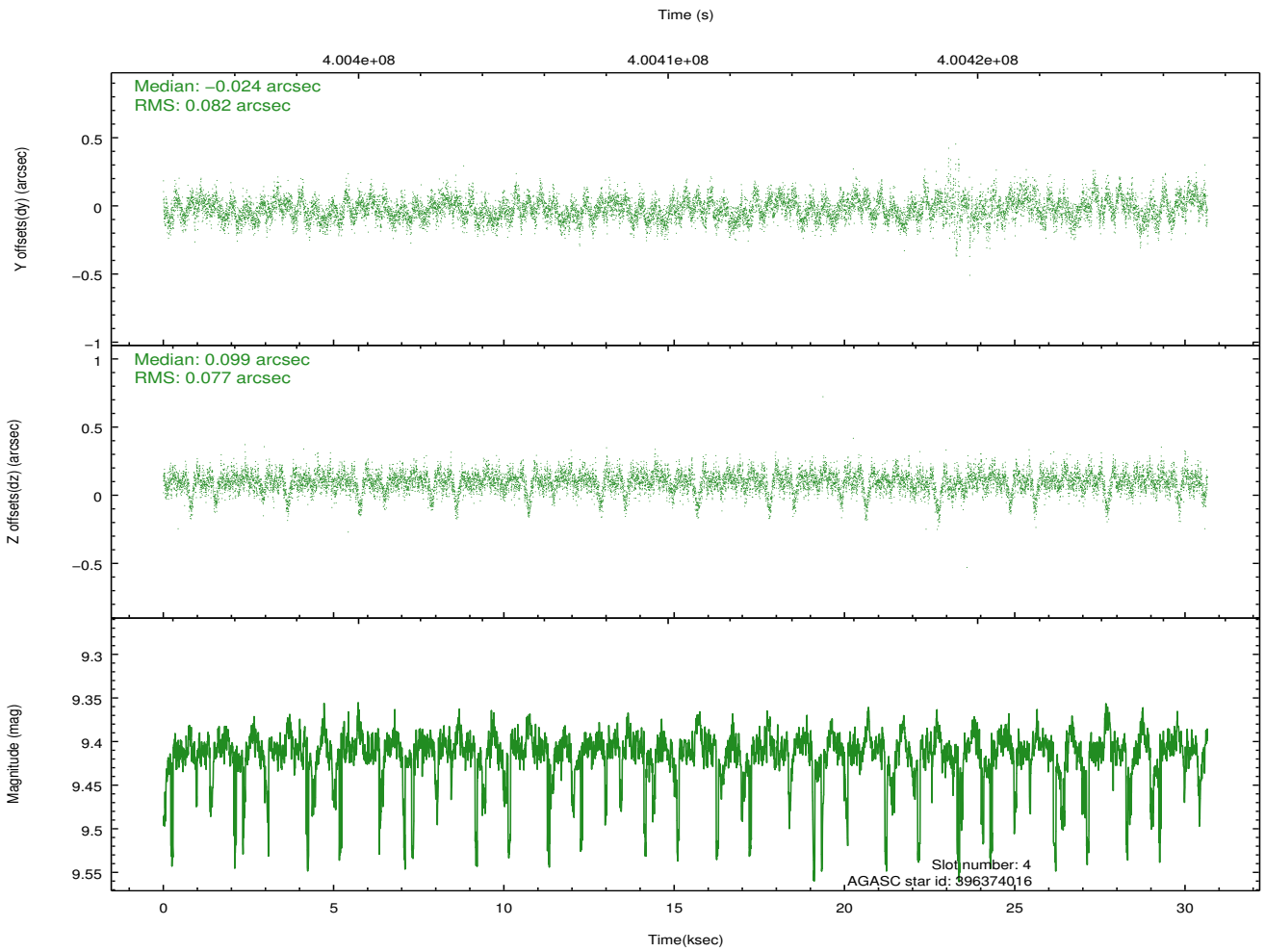
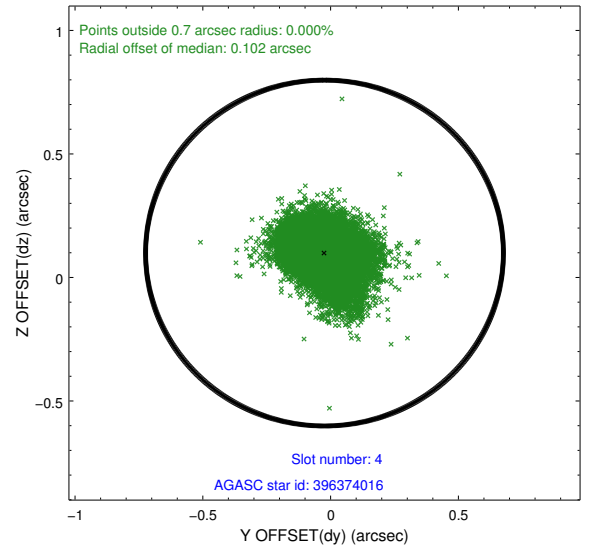
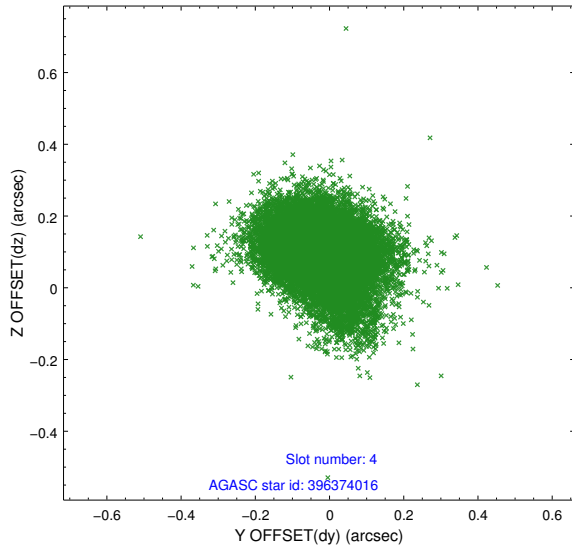
slot	status	id	mag	n_pts	med_dy	med_dz	dr1	dr2	ra	dec	mean_y	mean_z
0	FID	ACIS-S-2	6.87	7475	-0.064	-0.034	0.011	0.017	0.000000	0.000000	-769.61	-1739.82
1	FID	ACIS-S-4	6.96	7476	0.143	0.040	0.010	0.019	0.000000	0.000000	2143.89	168.60
2	FID	ACIS-S-5	6.99	7477	-0.113	0.003	0.008	0.015	0.000000	0.000000	-1822.37	162.40
3	GUIDE	396369984	8.29	14946	-0.114	-0.018	0.082	0.137	199.169989	43.839251	2172.79	-755.30
4	GUIDE	396374016	9.41	14859	-0.024	0.099	0.117	0.201	199.049182	44.102233	1283.35	-302.90
5	GUIDE	396378504	9.10	14893	0.071	0.090	0.103	0.170	198.227196	44.400847	-982.34	-1018.83
6	GUIDE	396378656	9.05	14938	-0.006	-0.107	0.093	0.153	199.073320	44.722991	-244.62	1328.54
7	GUIDE	453525256	8.95	14937	0.080	-0.054	0.094	0.161	198.604570	45.180555	-2251.07	1664.58

## 2.4 Star Slots

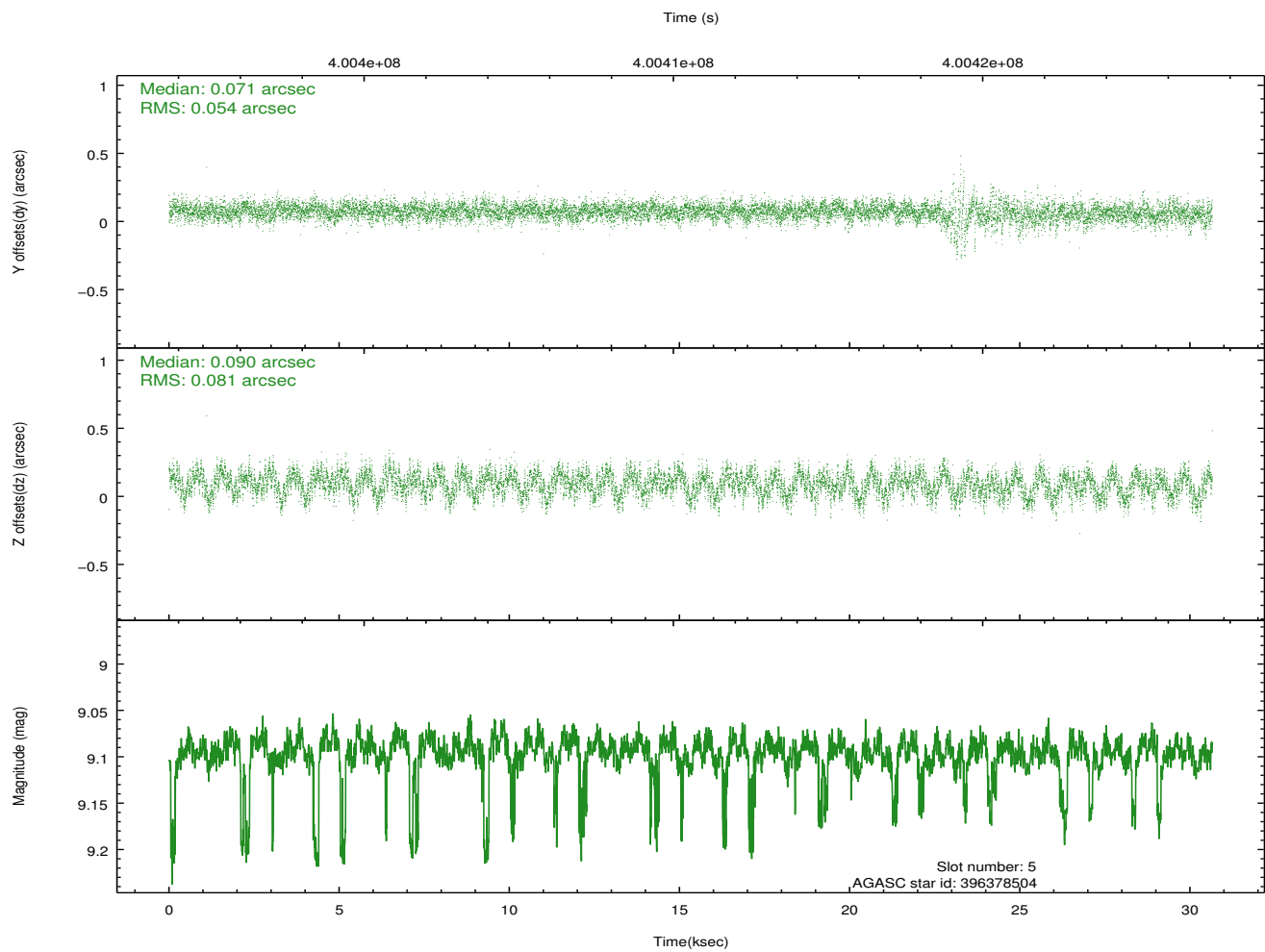
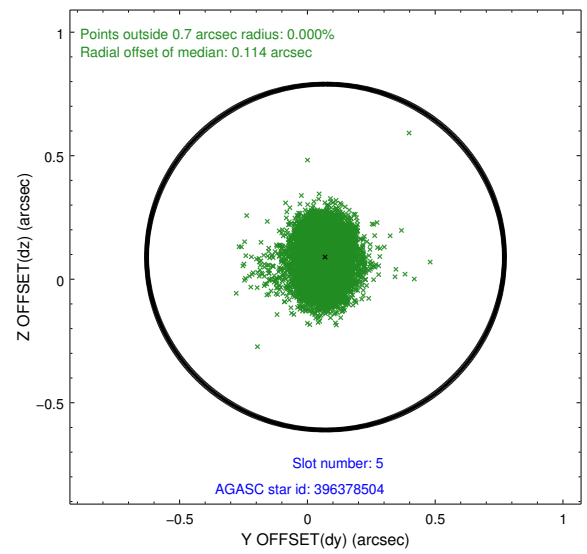
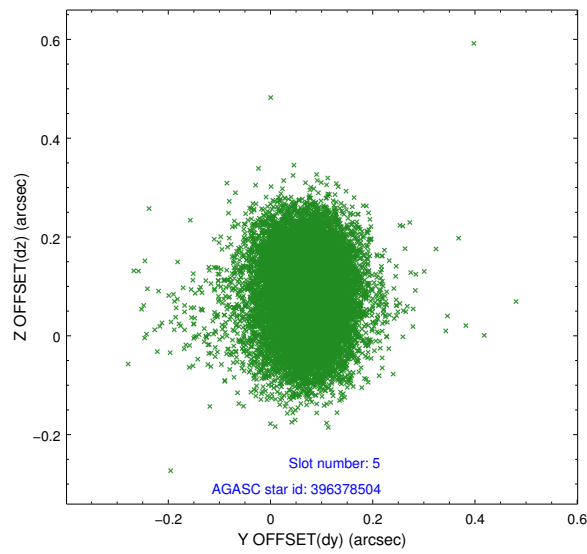
### 2.4.1 Slot 3



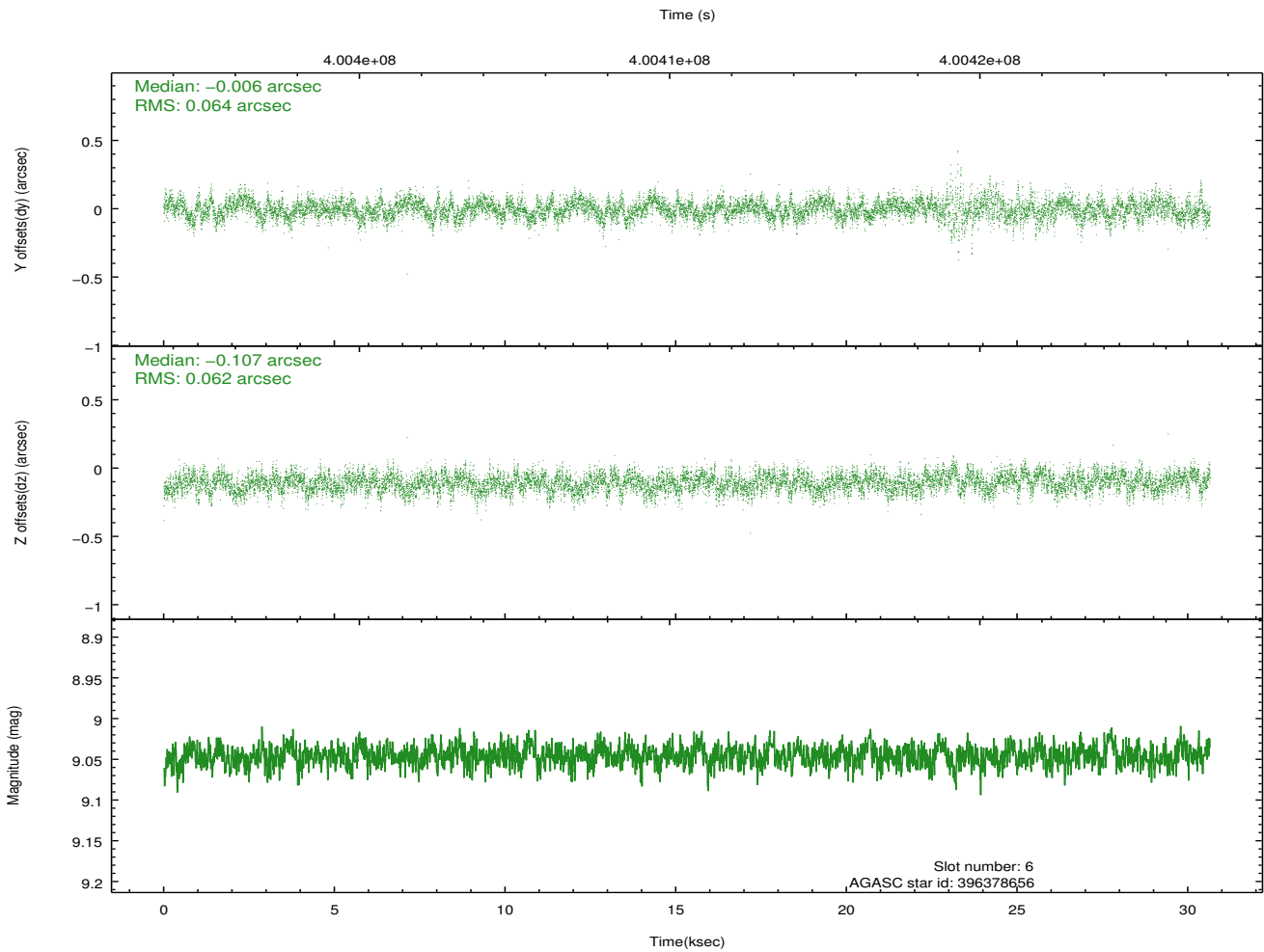
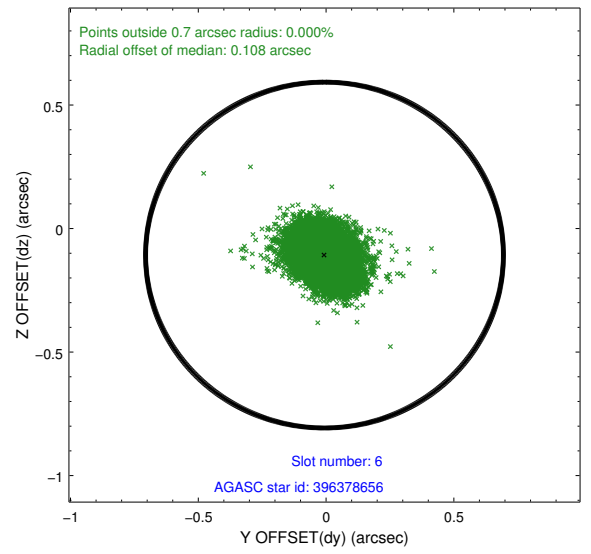
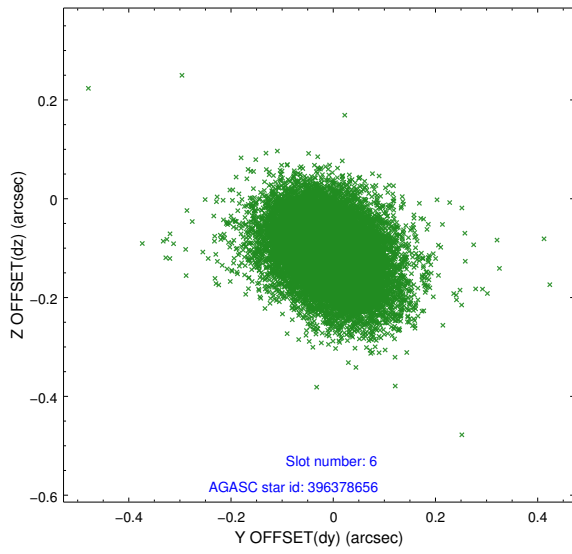
### 2.4.2 Slot 4



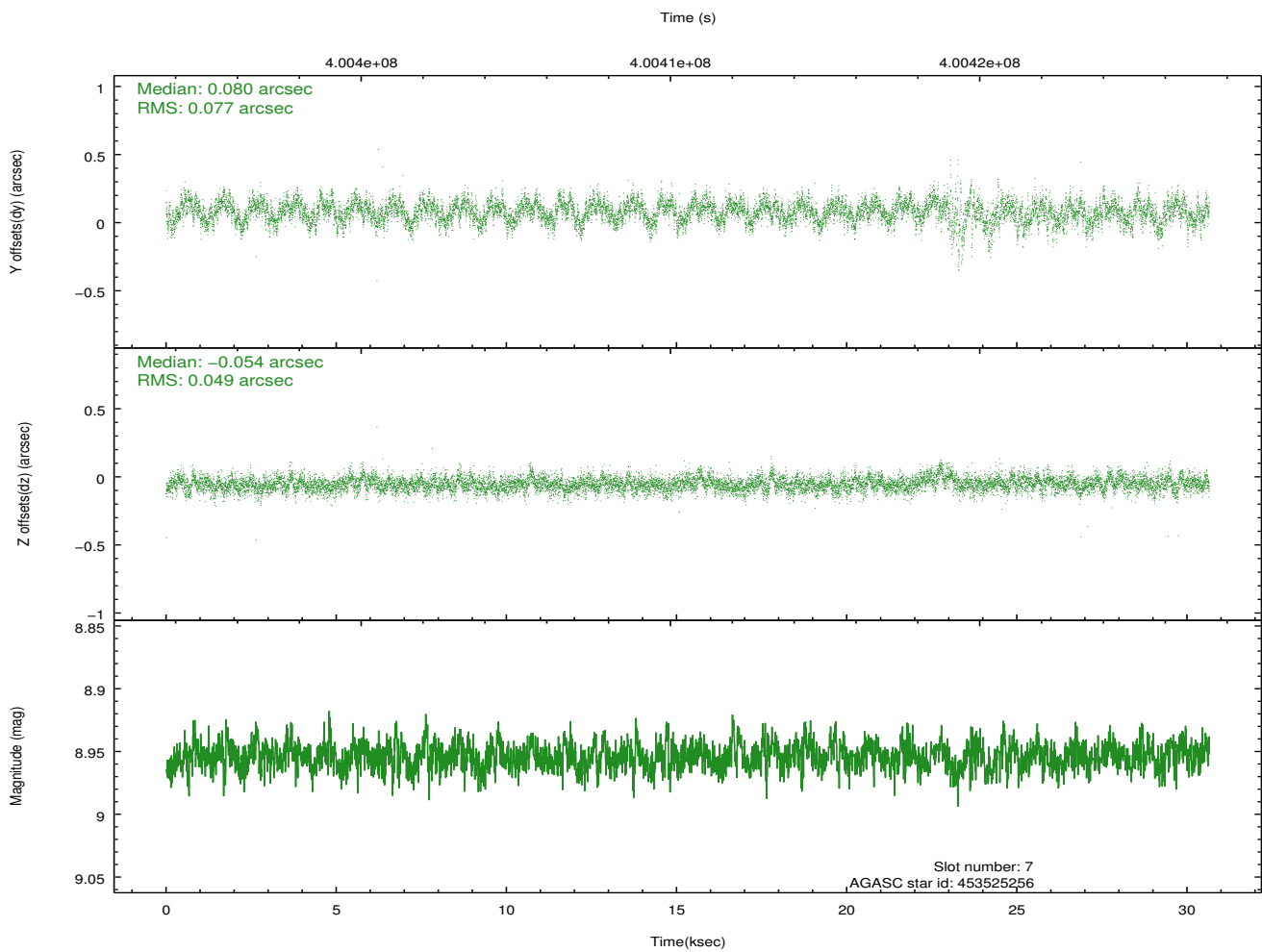
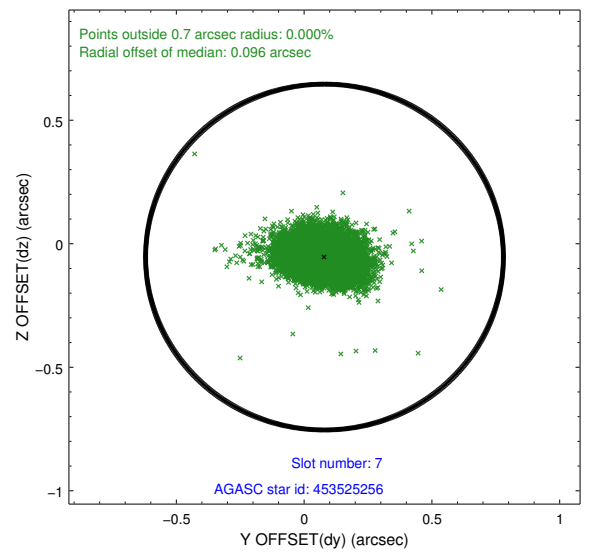
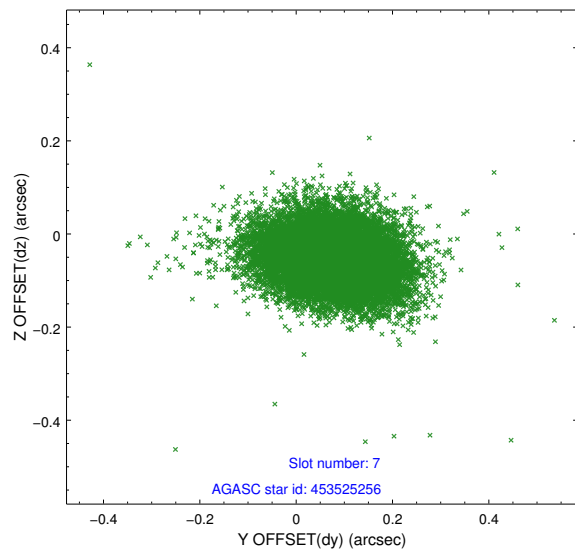
### 2.4.3 Slot 5



### 2.4.4 Slot 6

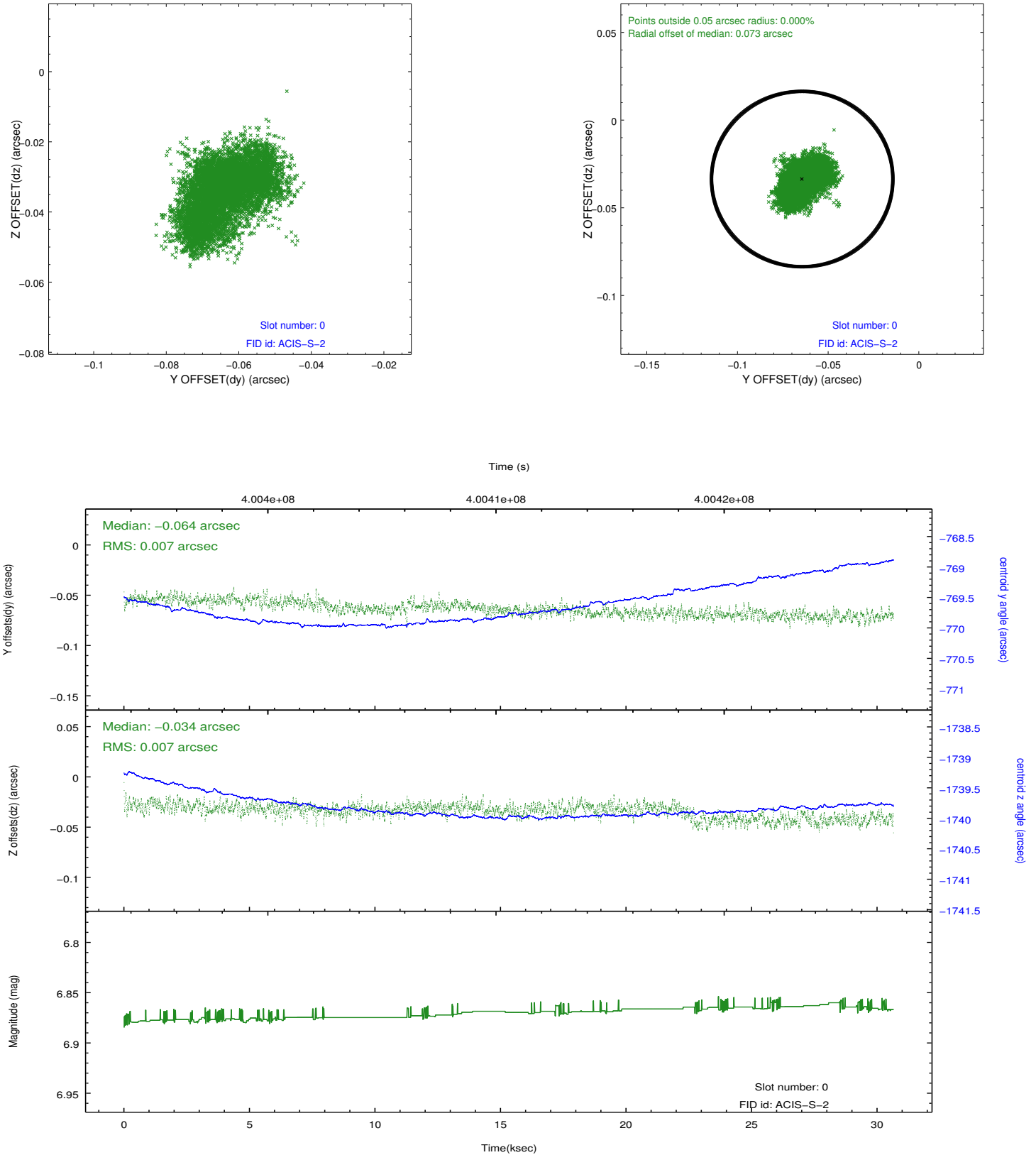


## 2.4.5 Slot 7

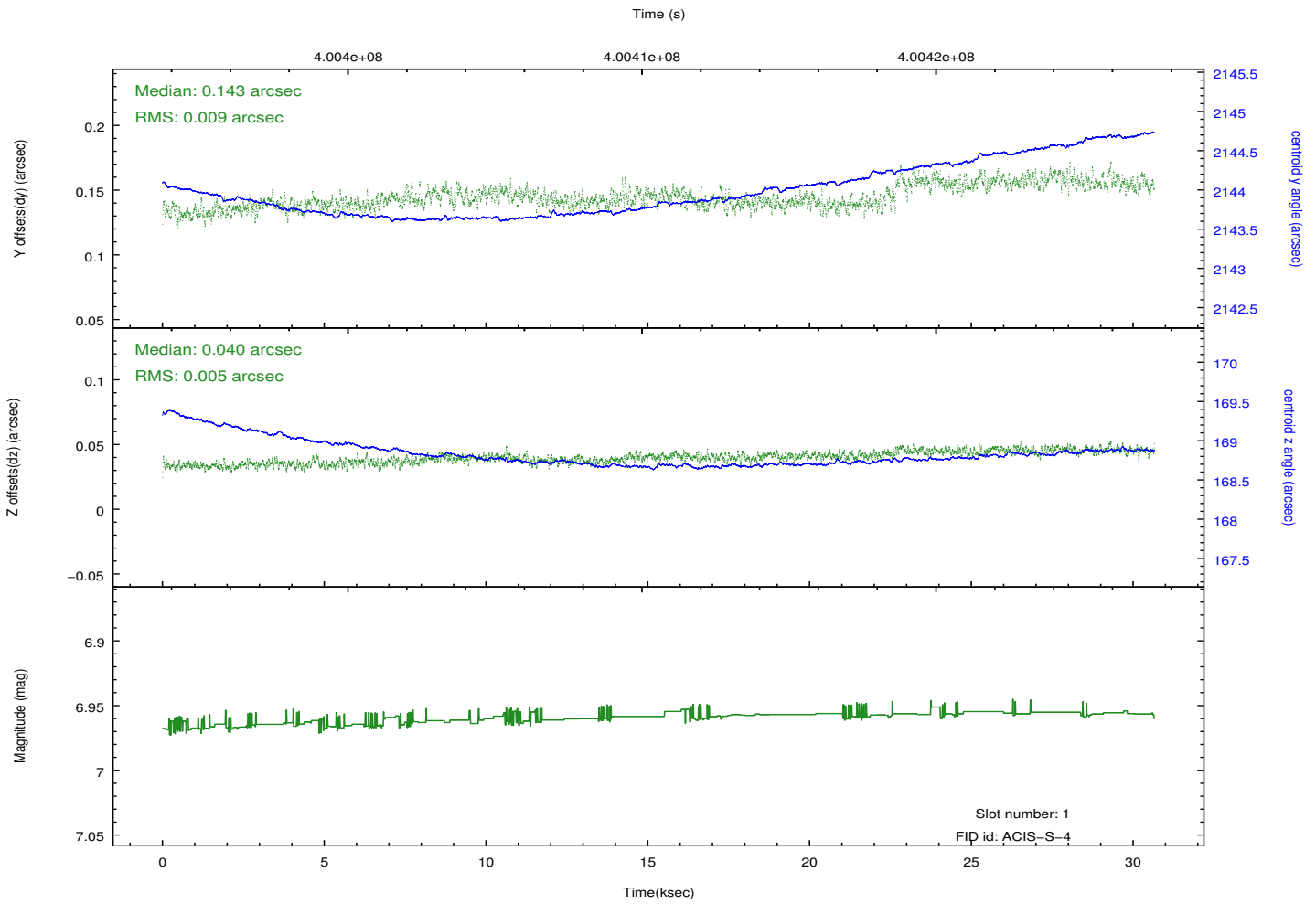
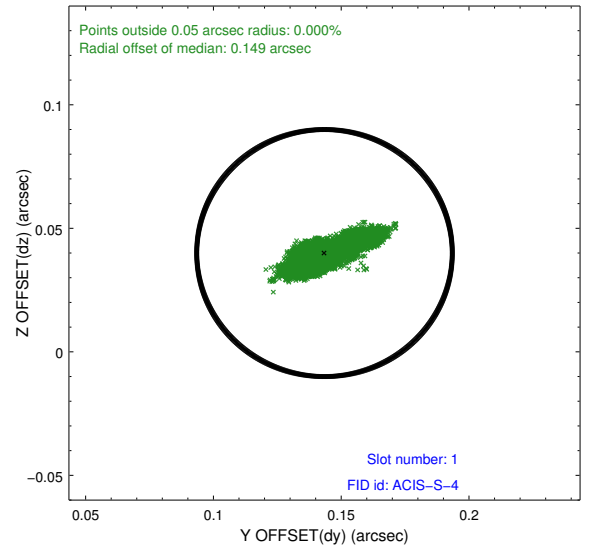
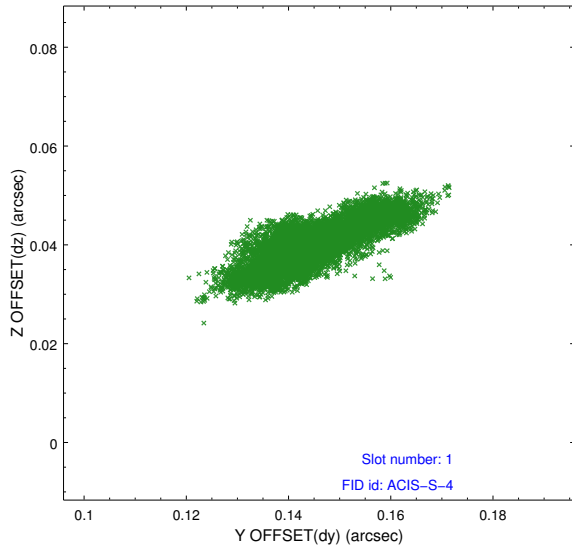


## 2.5 FID Slots

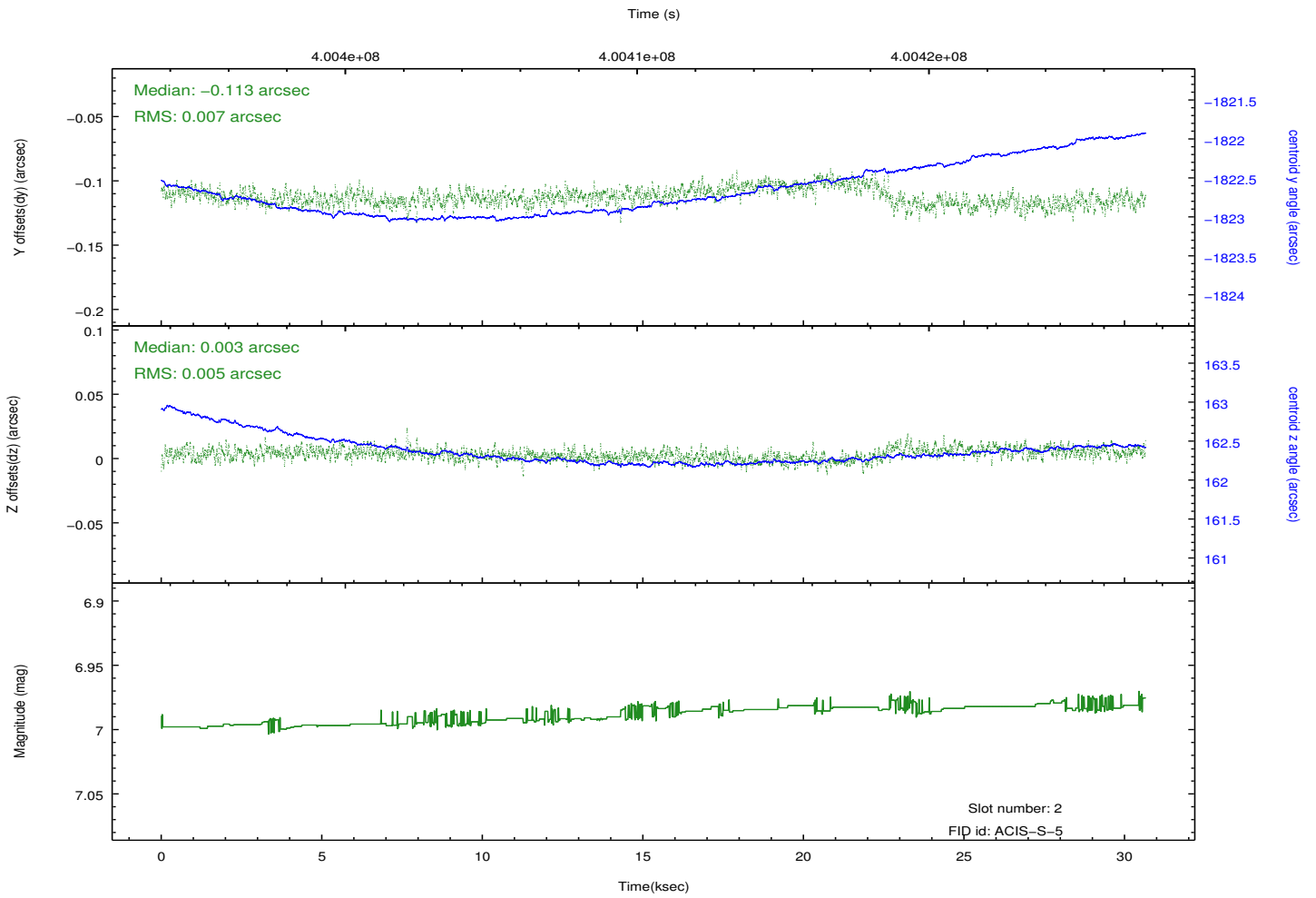
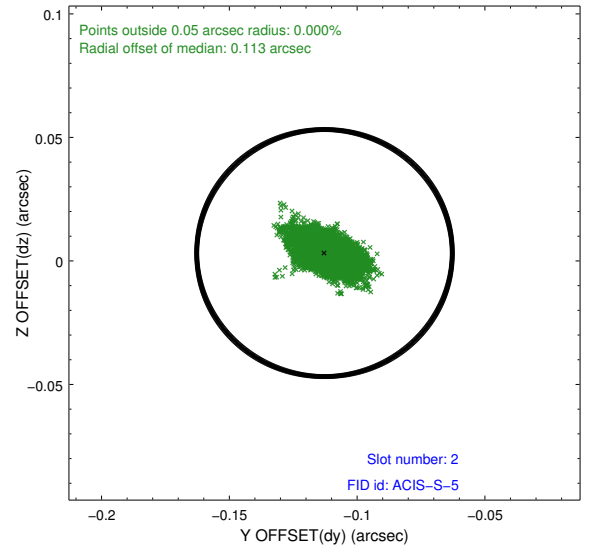
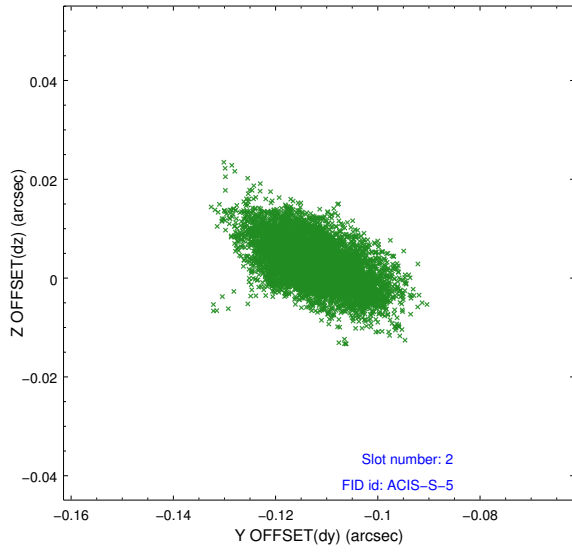
### 2.5.1 Slot 0



## 2.5.2 Slot 1



### 2.5.3 Slot 2



# A Summary

## A.1 Status

V&V Scientist	Beth Sundheim
V&V Date (YYYY-MM-DD)	2012.07.11
V&V Edition	1
V&V Disposition and Status	OK
V&V Charge Time	30.039000231028

## A.2 Comments