

# V&V Reference Report

## L2 ASCDS Version : 8.4.3.1

Observation 12262 - L2 Version 2  
Chandra X-Ray Center

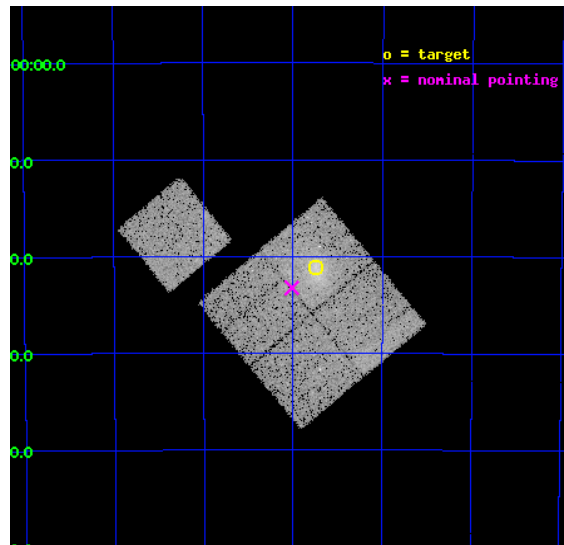
L2 Processing Date : Feb 29 2012

## Contents

<b>1</b>	<b>Front</b>	<b>2</b>
<b>2</b>	<b>OBI</b>	<b>3</b>
2.1	OBI . . . . .	3
2.1.1	Images . . . . .	3
2.1.2	Bias . . . . .	3
2.1.3	Parameters . . . . .	4
2.1.4	Events . . . . .	4
2.2	Compared Parameters . . . . .	5
2.3	Aspect . . . . .	6
2.4	Star Slots . . . . .	9
2.4.1	Slot 3 . . . . .	9
2.4.2	Slot 4 . . . . .	10
2.4.3	Slot 5 . . . . .	11
2.4.4	Slot 6 . . . . .	12
2.4.5	Slot 7 . . . . .	13
2.5	FID Slots . . . . .	14
2.5.1	Slot 0 . . . . .	14
2.5.2	Slot 1 . . . . .	15
2.5.3	Slot 2 . . . . .	16
<b>A</b>	<b>Summary</b>	<b>17</b>
A.1	Status . . . . .	17
A.2	Comments . . . . .	17

# 1 Front

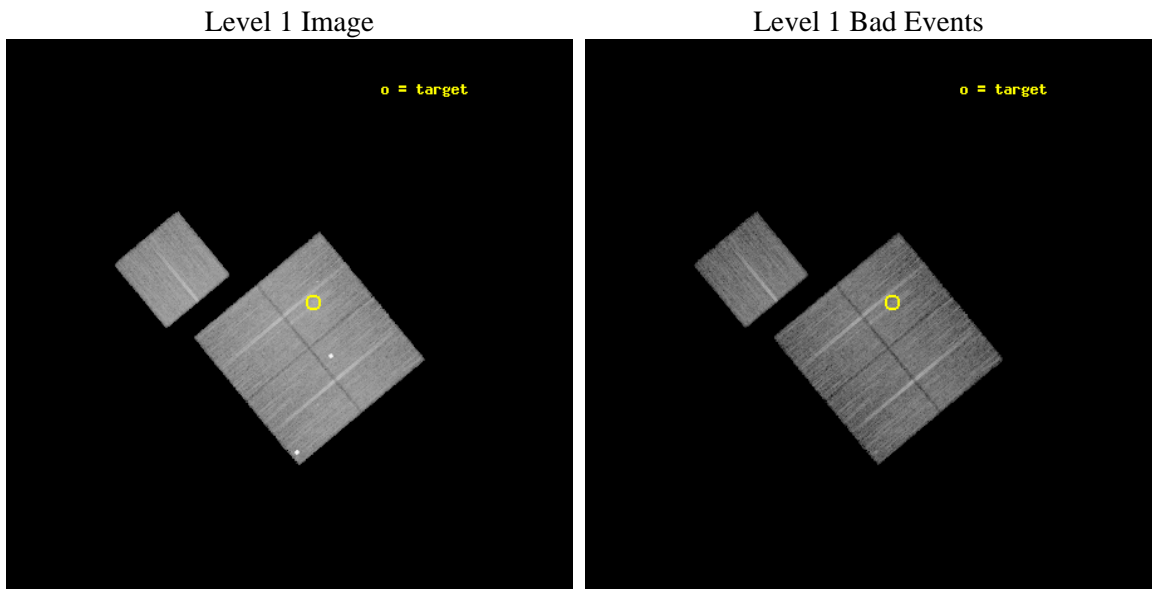
seq_num	800981	Sequence number
obs_id	12262	Observation id
title	Chandra Observations of the ACT Sample of SZE-Selected Galaxy Clusters	Proposal title
observer	Prof John Hughes	Principal investigator
object	ACT J0235-5121	Source name
dtycycle	0	&#160
cycle	P	events from which exps? Prim/Second/Both
ra_targ	38.938333	Observer's specified target RA [deg]
dec_targ	-51.351222	Observer's specified target Dec [deg]
ra_nom	39.003278597031	Nominal RA [deg]
dec_nom	-51.387512027436	Nominal Dec [deg]
roll_nom	320.25941719089	Nominal Roll [deg]
revision	2	Processing version of data
ontime	20057.000154257	Sum of GTIs [s]
livetime	19794.940681493	Livetime [s]
ontime0	20057.000154257	Sum of GTIs [s]
ontime1	20057.000154257	Sum of GTIs [s]
ontime2	20057.000154257	Sum of GTIs [s]
ontime3	20057.000154257	Sum of GTIs [s]
ontime6	20053.859144032	Sum of GTIs [s]
l2events	66074	Number of level 2 events



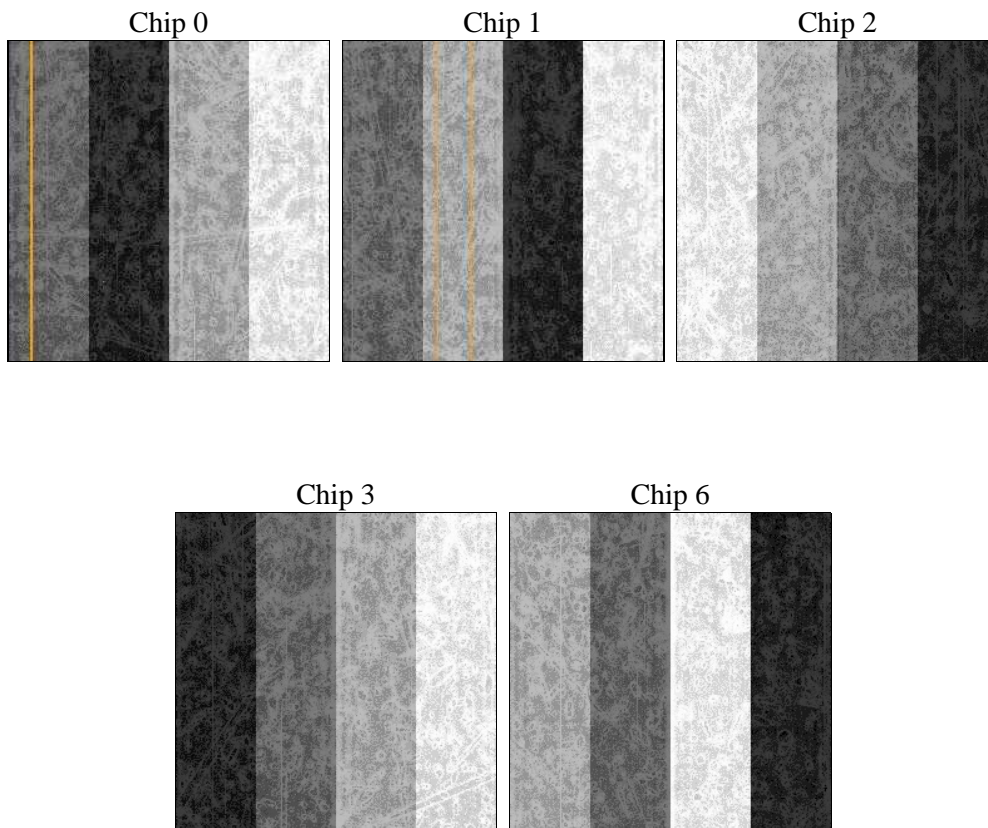
## 2 OBI

### 2.1 OBI

#### 2.1.1 Images



#### 2.1.2 Bias



### 2.1.3 Parameters

obi_num	0	Obi number	sched_exp_time	20000.000000	[s] Scheduled observation exposure time
ascdsver	8.4.3	Processing system revision	ontime	20057.000154257	Sum of GTIs [s]
caldbver	4.4.8	&#160	ontime0	20057.000154257	Sum of GTIs [s]
date	2012-02-29T12:46:30	Date and time of file creation	ontime1	20057.000154257	Sum of GTIs [s]
revision	2	Processing version of data	ontime2	20057.000154257	Sum of GTIs [s]
			ontime3	20057.000154257	Sum of GTIs [s]
			ontime6	20053.859144032	Sum of GTIs [s]
			l1events	638571	Number of level 1 events

### 2.1.4 Events

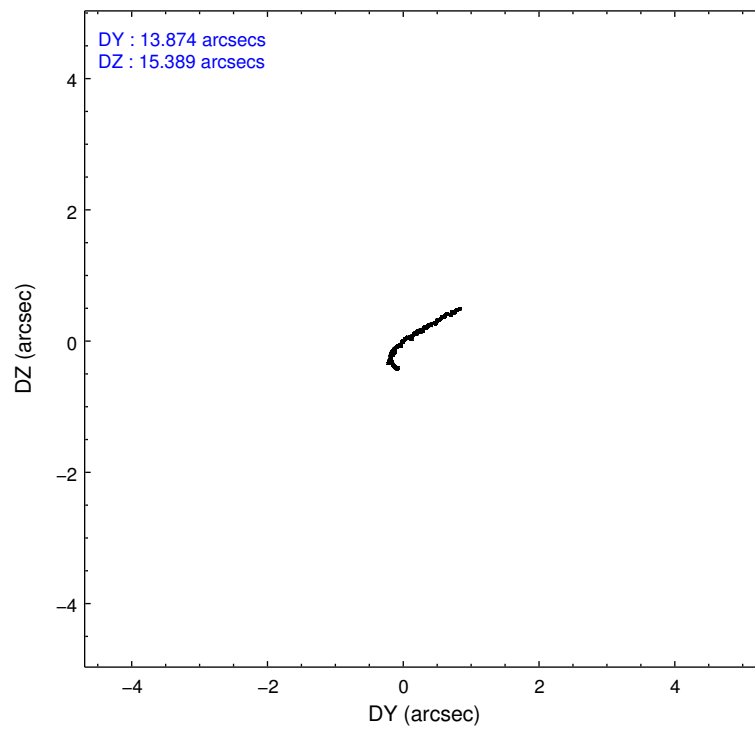
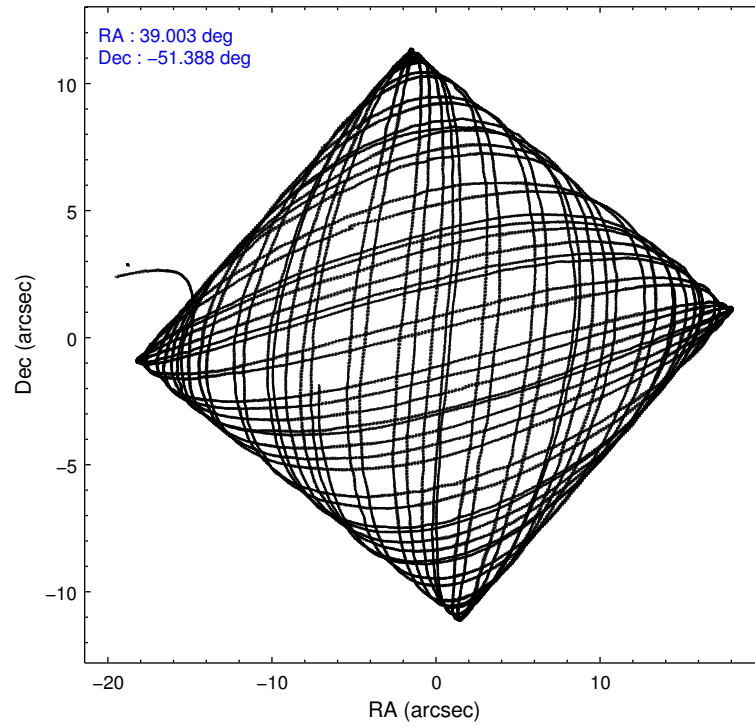
	ccd 0	ccd 1	ccd 2	ccd 3	ccd 6
level 1 events	127088	126119	124773	130815	129776
rejected events	104901	104160	110932	111961	115295
rejected %	82%	82%	88%	85%	88%

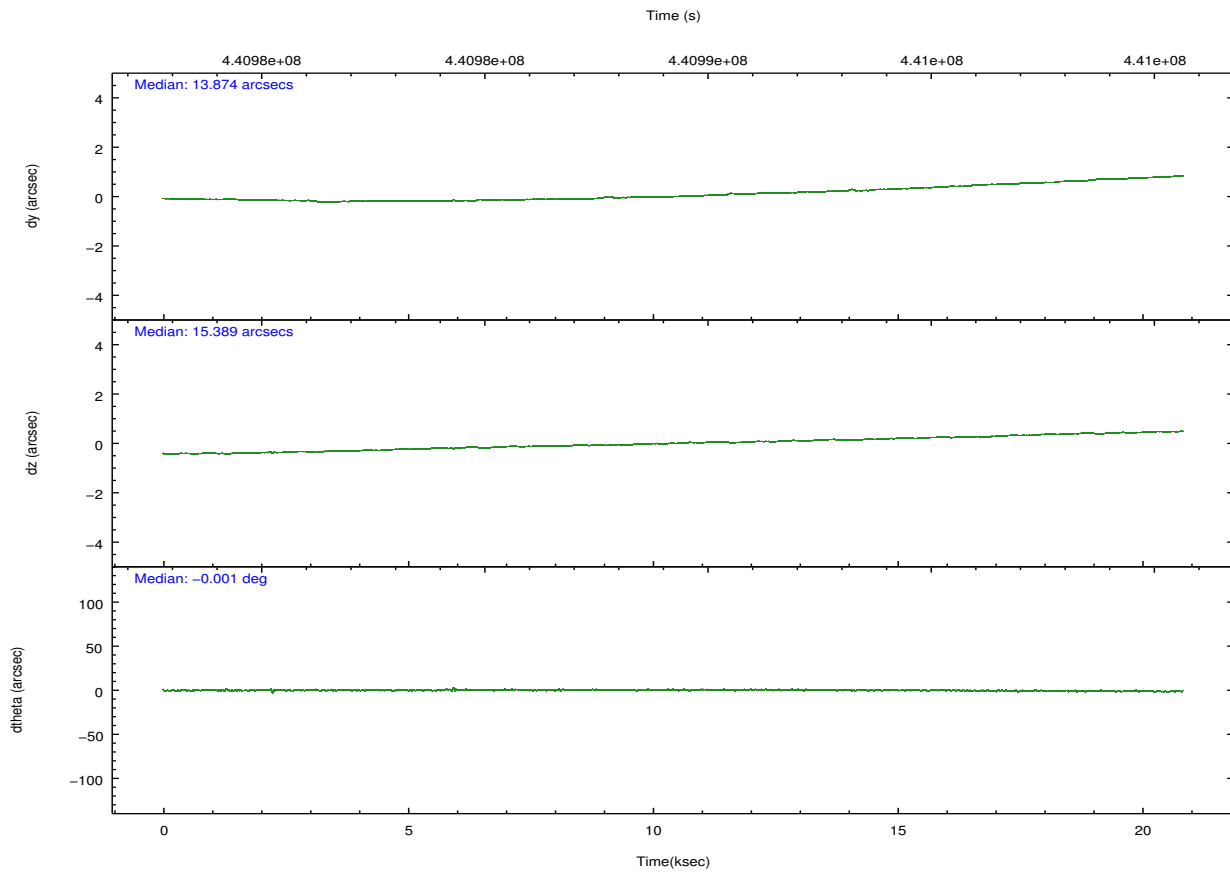
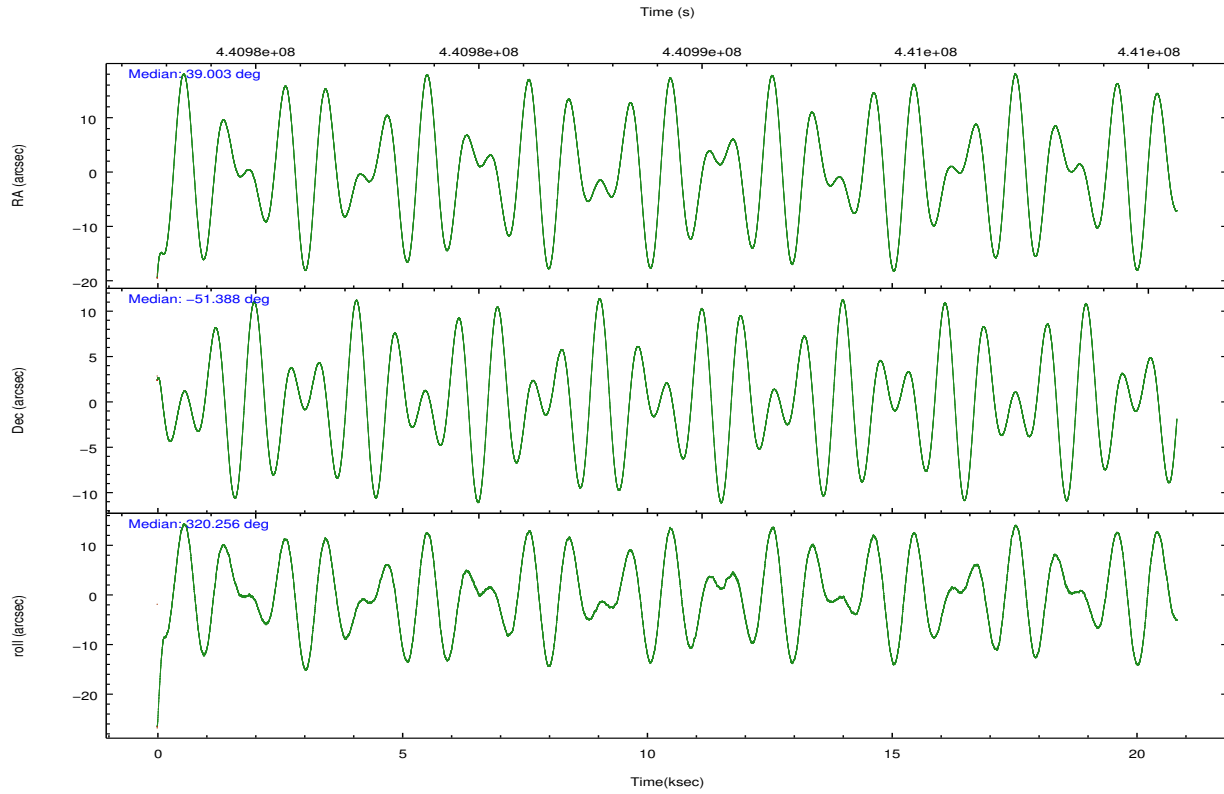
	ccd 0	ccd 1	ccd 2	ccd 3	ccd 6
grade 0 events	9032	11576	4797	9245	4916
	7%	9%	3%	7%	3%
grade 1 events	106	110	66	84	61
	0%	0%	0%	0%	0%
grade 2 events	7305	3928	3347	3443	3206
	5%	3%	2%	2%	2%
grade 3 events	1529	1483	1499	1627	1521
	1%	1%	1%	1%	1%
grade 4 events	1381	1553	1473	1592	1501
	1%	1%	1%	1%	1%
grade 5 events	5483	5760	5170	6340	5893
	4%	4%	4%	4%	4%
grade 6 events	2942	3424	2727	2953	3338
	2%	2%	2%	2%	2%
grade 7 events	99310	98285	105694	105531	109340
	78%	77%	84%	80%	84%

## 2.2 Compared Parameters

Parameter	Planned	Actual	Parameter	Planned	Actual
Instrument	ACIS	ACIS	Obspar format version number	7	7
Detector	ACIS-01236	ACIS-01236	Obspar file type	PREDICTED	ACTUAL
Grating	NONE	NONE	Obspar update status	NONE	UPDATED
Data mode	VFAINT	VFAINT	CCD I0 on	Y	Y
Observation mode	POINTING	POINTING	CCD I1 on	Y	Y
[deg] Pointing RA	38.959829	39.00327859703112	CCD I2 on	Y	Y
[deg] Pointing Dec	-51.382933	-51.38751202743564	CCD I3 on	Y	Y
[deg] Pointing Roll	320.016785	320.2594171908854	CCD S0 on	N	N
[mm] SIM focus pos	-0.782348	-0.7809083437167272	CCD S1 on	N	N
[mm] SIM defocus	0	0.001439871863259334	CCD S2 on	O1	Y
[mm] SIM translation stage pos	-225.792463	-225.7829997647864	CCD S3 on	N	N
[mm] SIM translation stage offset	-7.8	-7.809453238143249	CCD S4 on	N	N
[s] Observation start time (MET)	440979632.184000	440977982.09184	CCD S5 on	N	N
Observation start date	2011-12-22T22:19:26	2011-12-22T21:53:02	Number of optional ACIS chips dropped	0	0
[s] Observation end time (MET)	440999632.184000	441000277.89302	On-chip summing requested	N	N
Observation end date	2011-12-23T03:52:46	2011-12-23T04:04:37	Subarray requested	NONE	NONE
Read mode	TIMED	TIMED	Alternating exposures requested	N	N
			[s] Primary exposure time	0.000000	3.1

## 2.3 Aspect



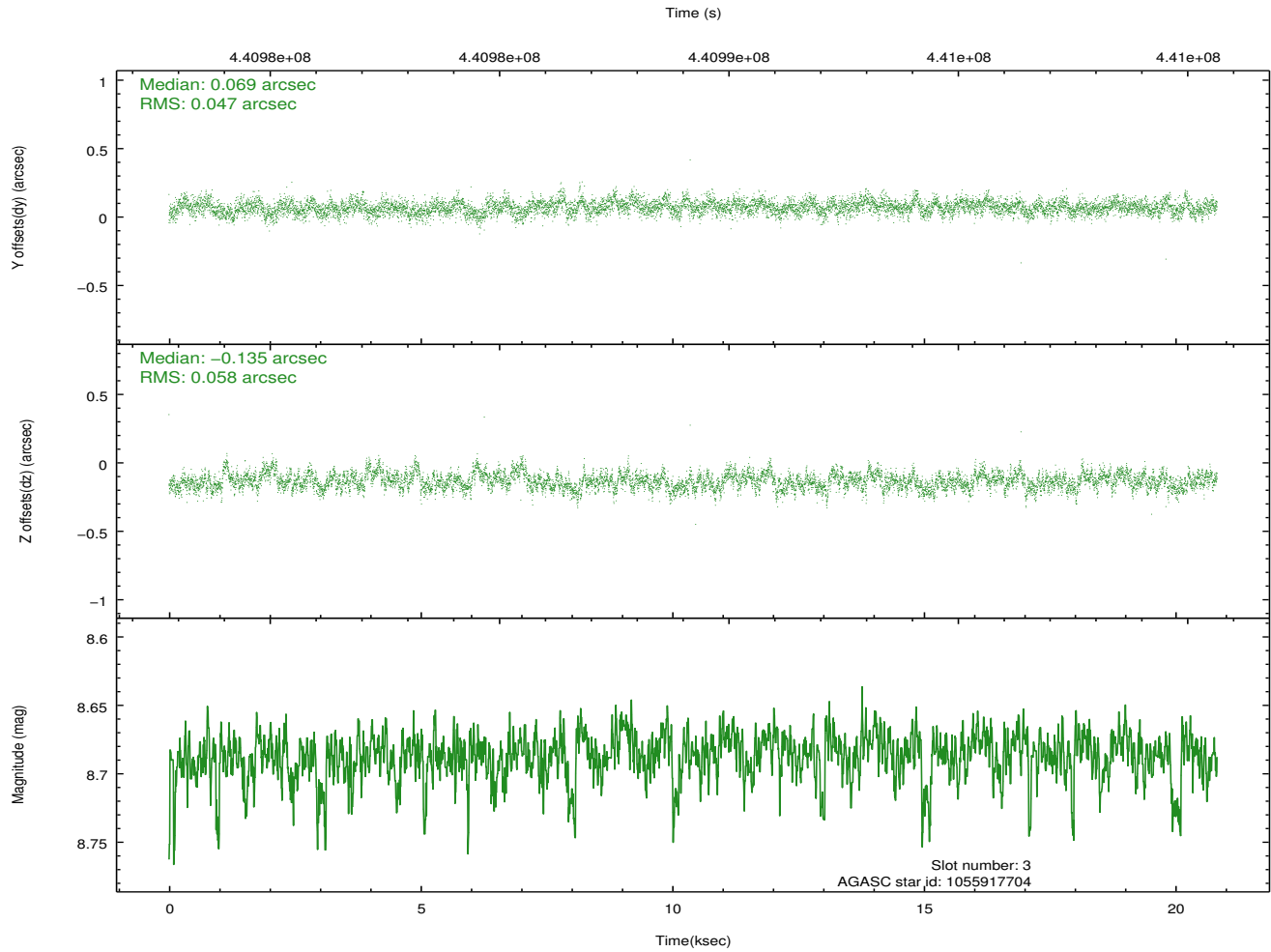
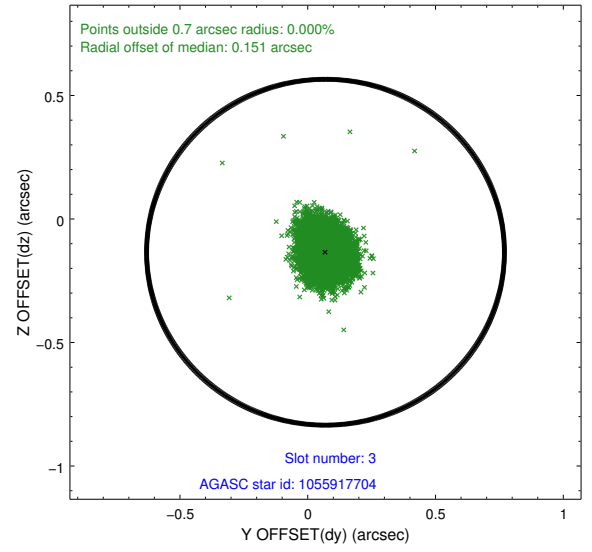
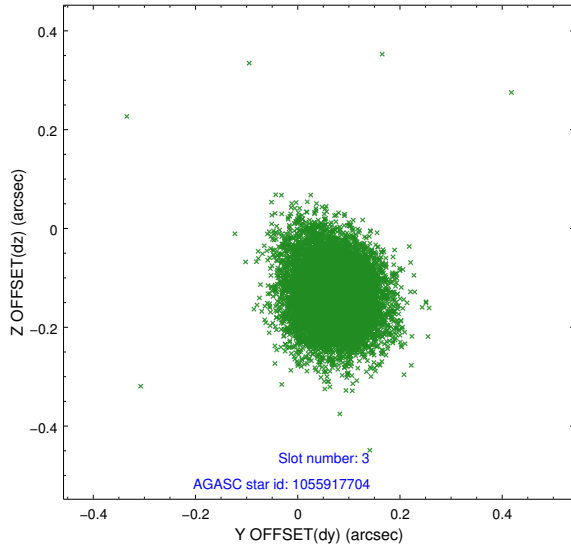


### Slot Statistics

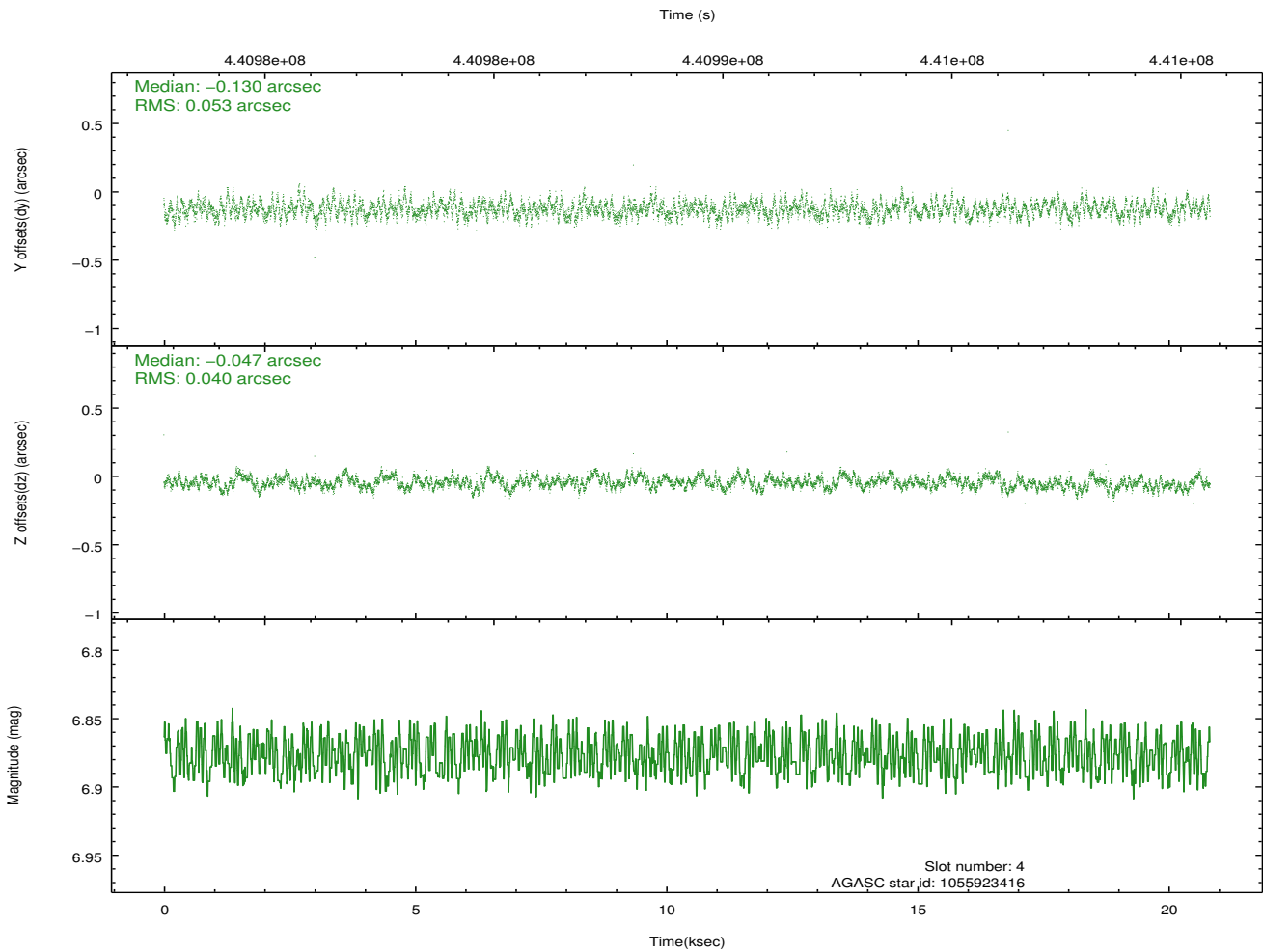
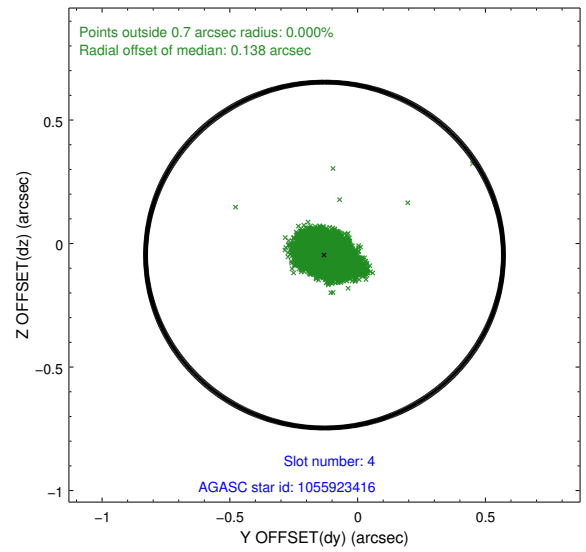
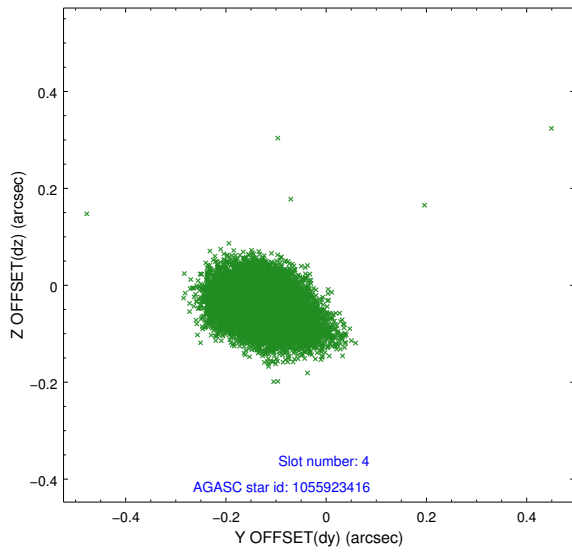
slot	status	id	mag	n_pts	med_dy	med_dz	dr1	dr2	ra	dec	mean_y	mean_z
0	FID	ACIS-I-1	7.09	5081	0.176	-0.145	0.010	0.026	0.000000	0.000000	925.50	-999.47
1	FID	ACIS-I-5	7.08	5081	-0.342	0.131	0.008	0.014	0.000000	0.000000	-1823.01	898.19
2	FID	ACIS-I-6	7.09	5081	0.075	0.085	0.013	0.028	0.000000	0.000000	390.78	1542.83
3	GUIDE	1055917704	8.69	10148	0.069	-0.135	0.078	0.128	38.591744	-51.795371	327.43	-1665.27
4	GUIDE	1055923416	6.88	10157	-0.130	-0.047	0.070	0.113	38.881386	-50.853397	-1361.23	1345.99
5	GUIDE	1055924984	8.68	10157	0.127	0.197	0.080	0.126	37.692435	-51.438399	-2035.03	-1999.04
6	GUIDE	1055920424	7.59	10160	-0.132	-0.052	0.066	0.102	37.595498	-51.377368	-2343.79	-1977.48
7	GUIDE	1055925672	8.59	10147	0.062	0.035	0.079	0.126	40.277366	-51.440904	2418.23	1723.04

## 2.4 Star Slots

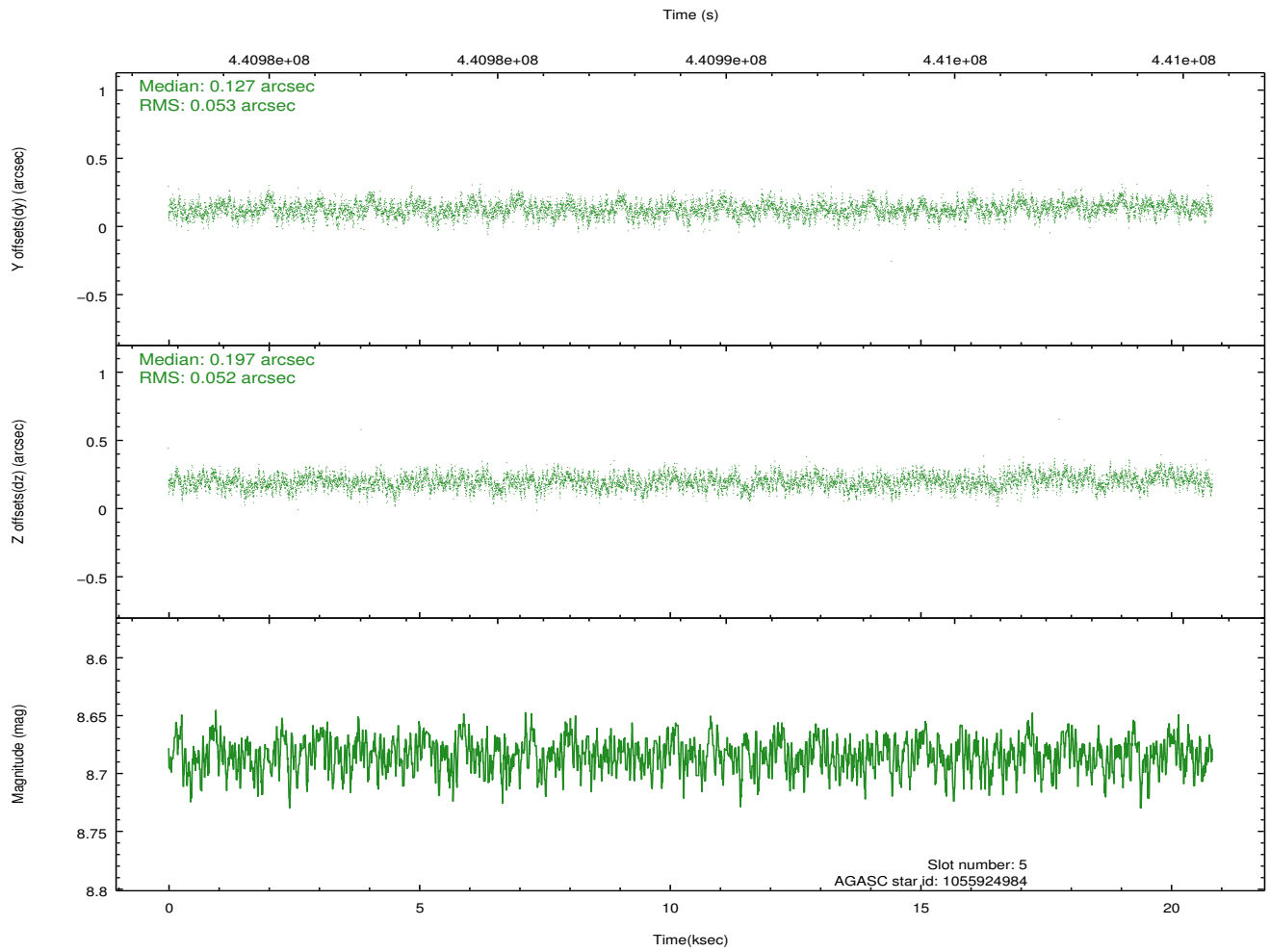
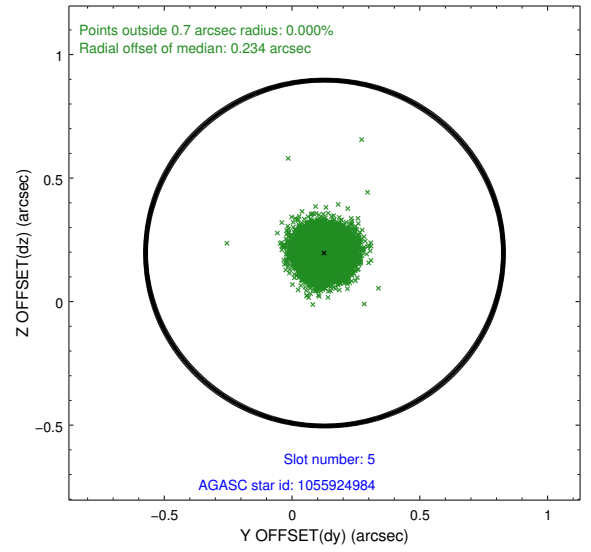
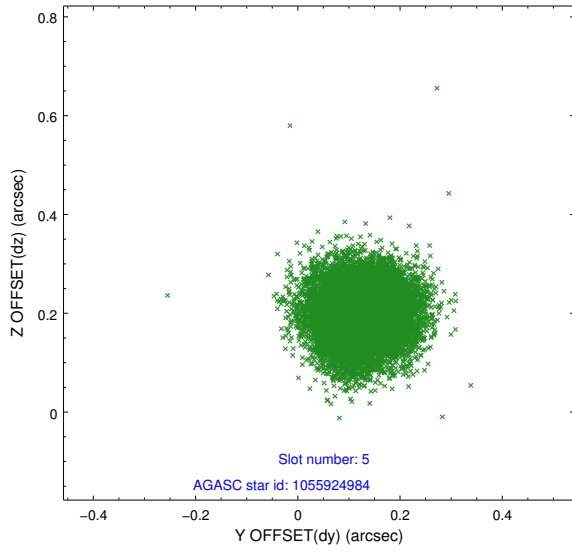
### 2.4.1 Slot 3



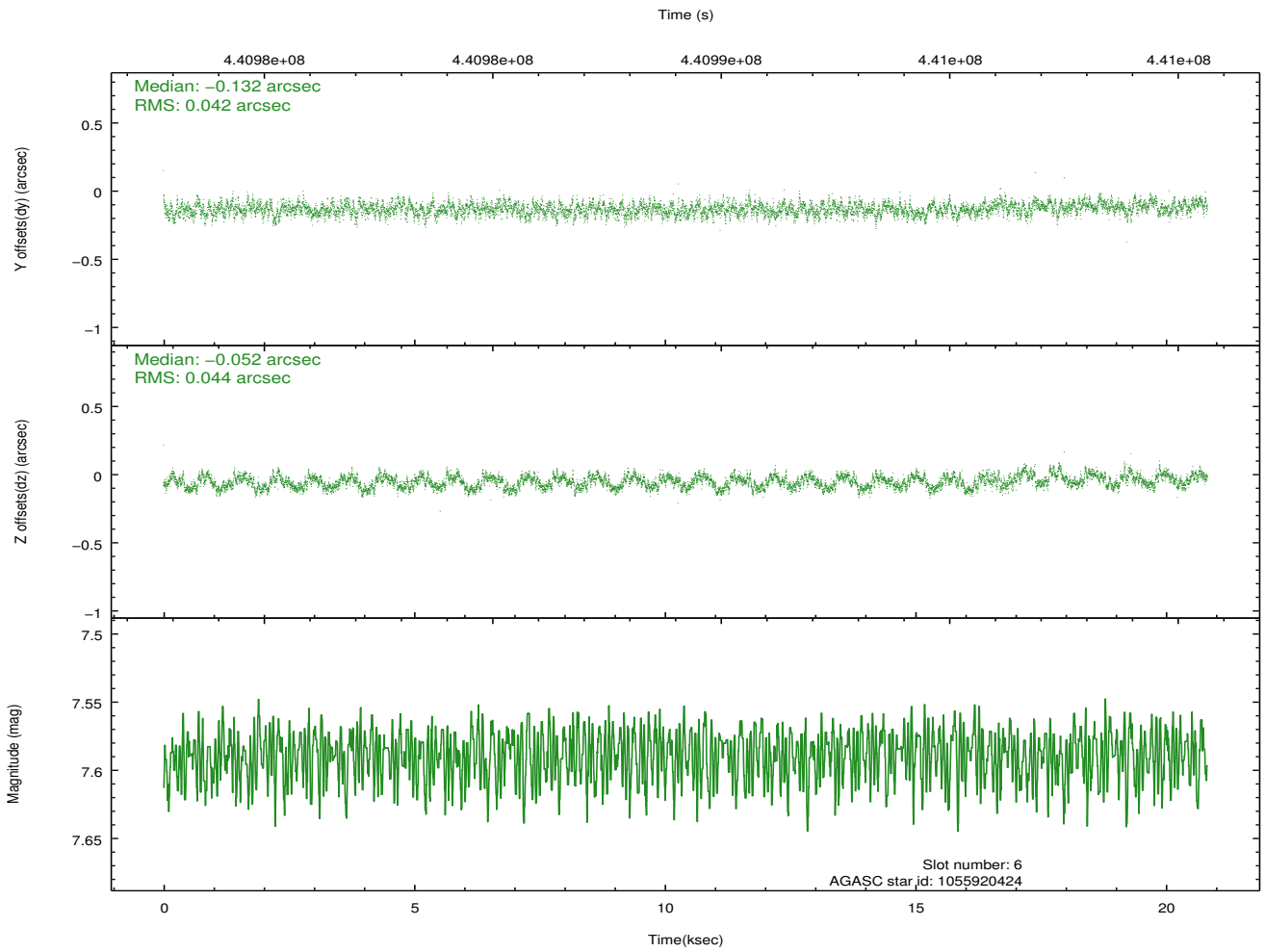
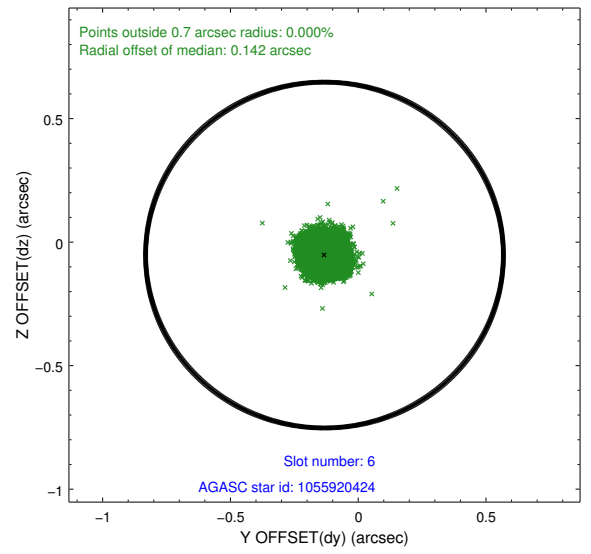
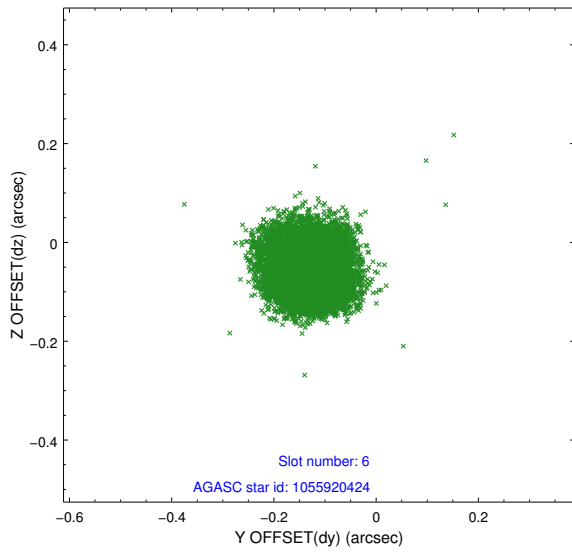
## 2.4.2 Slot 4



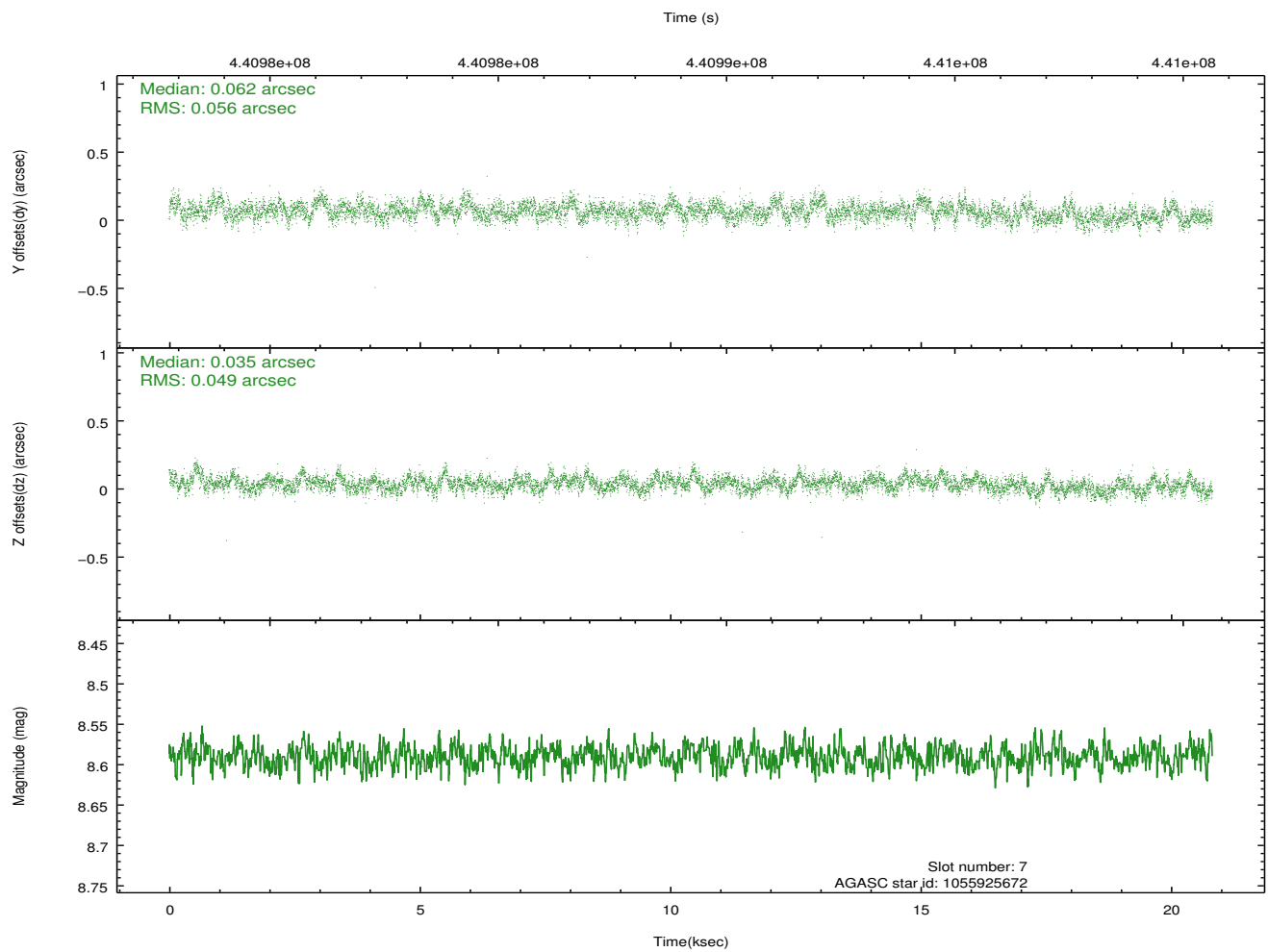
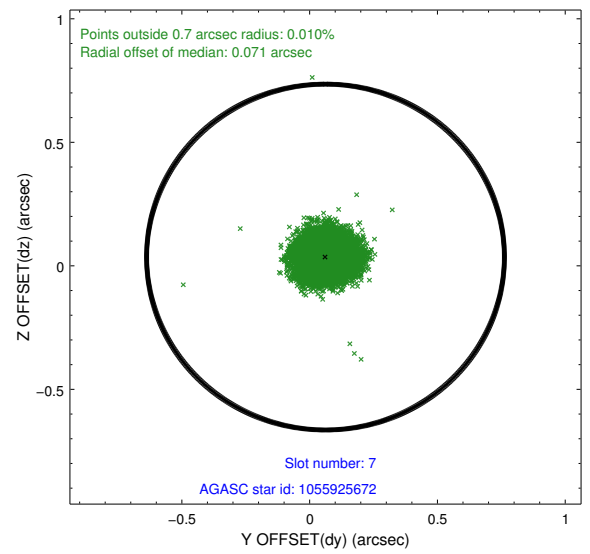
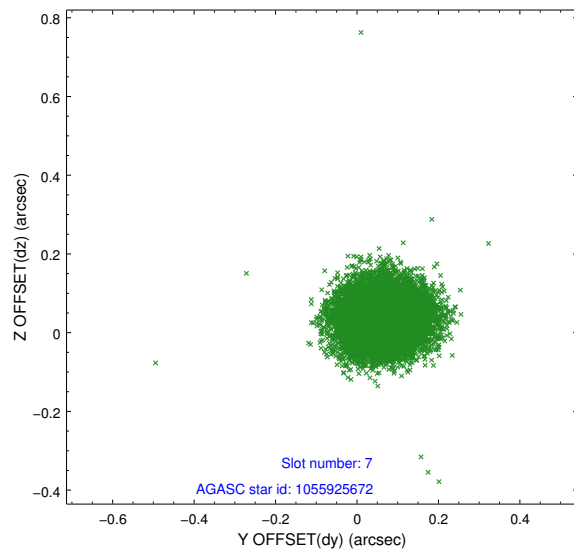
### 2.4.3 Slot 5



### 2.4.4 Slot 6

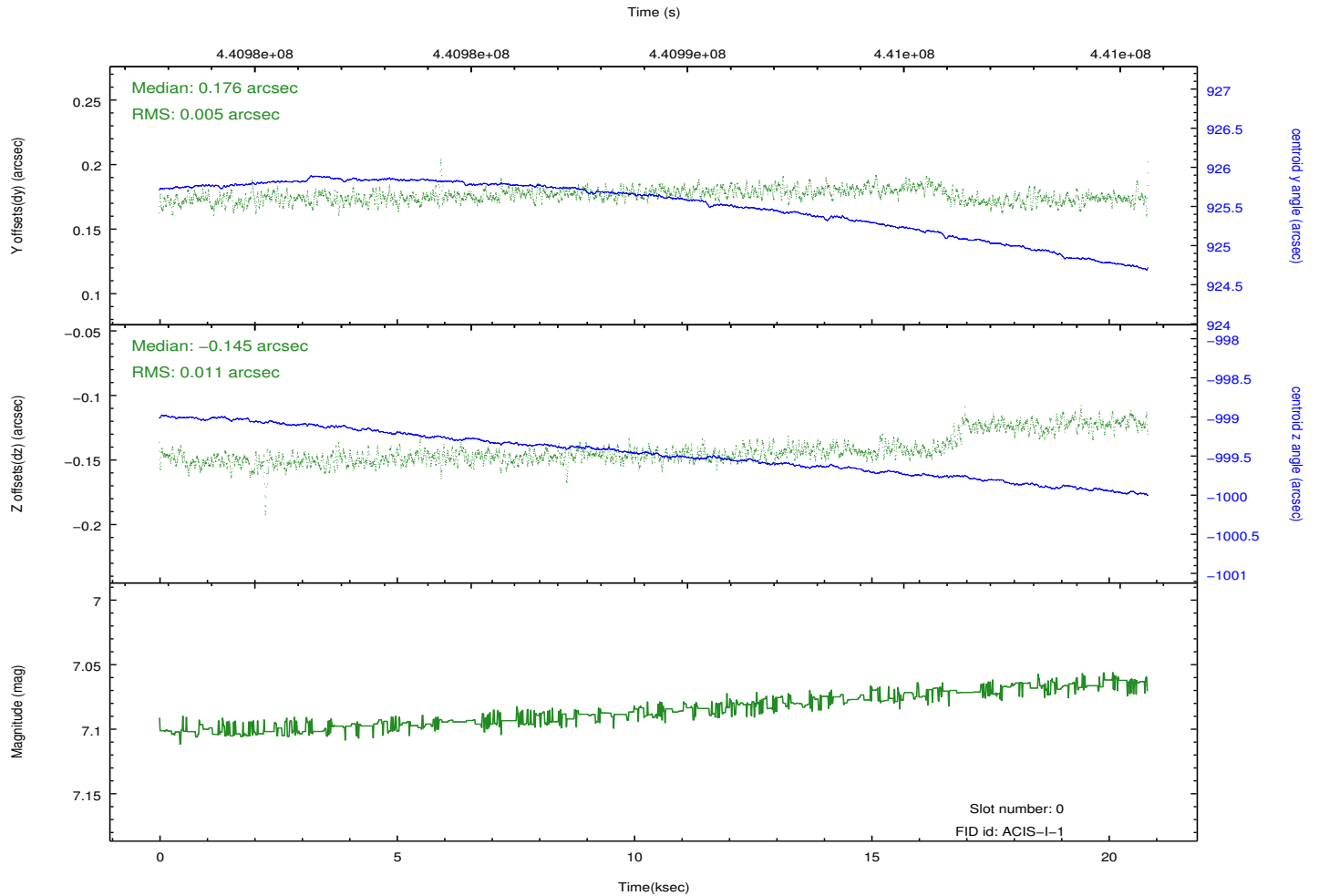
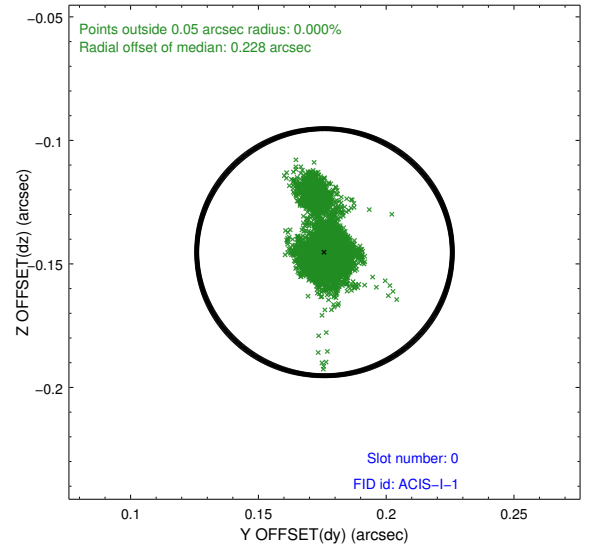
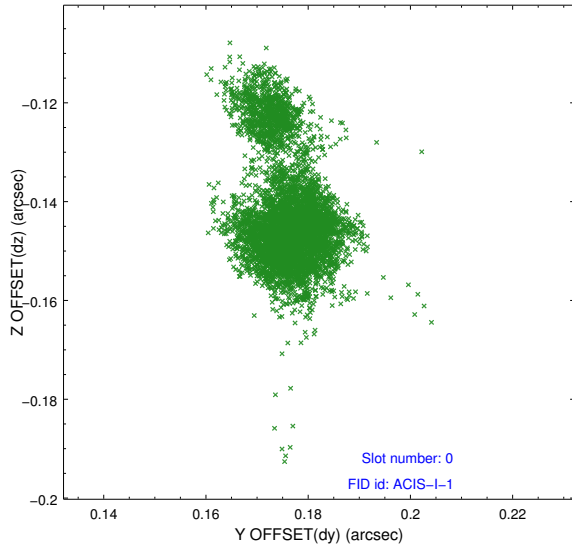


## 2.4.5 Slot 7

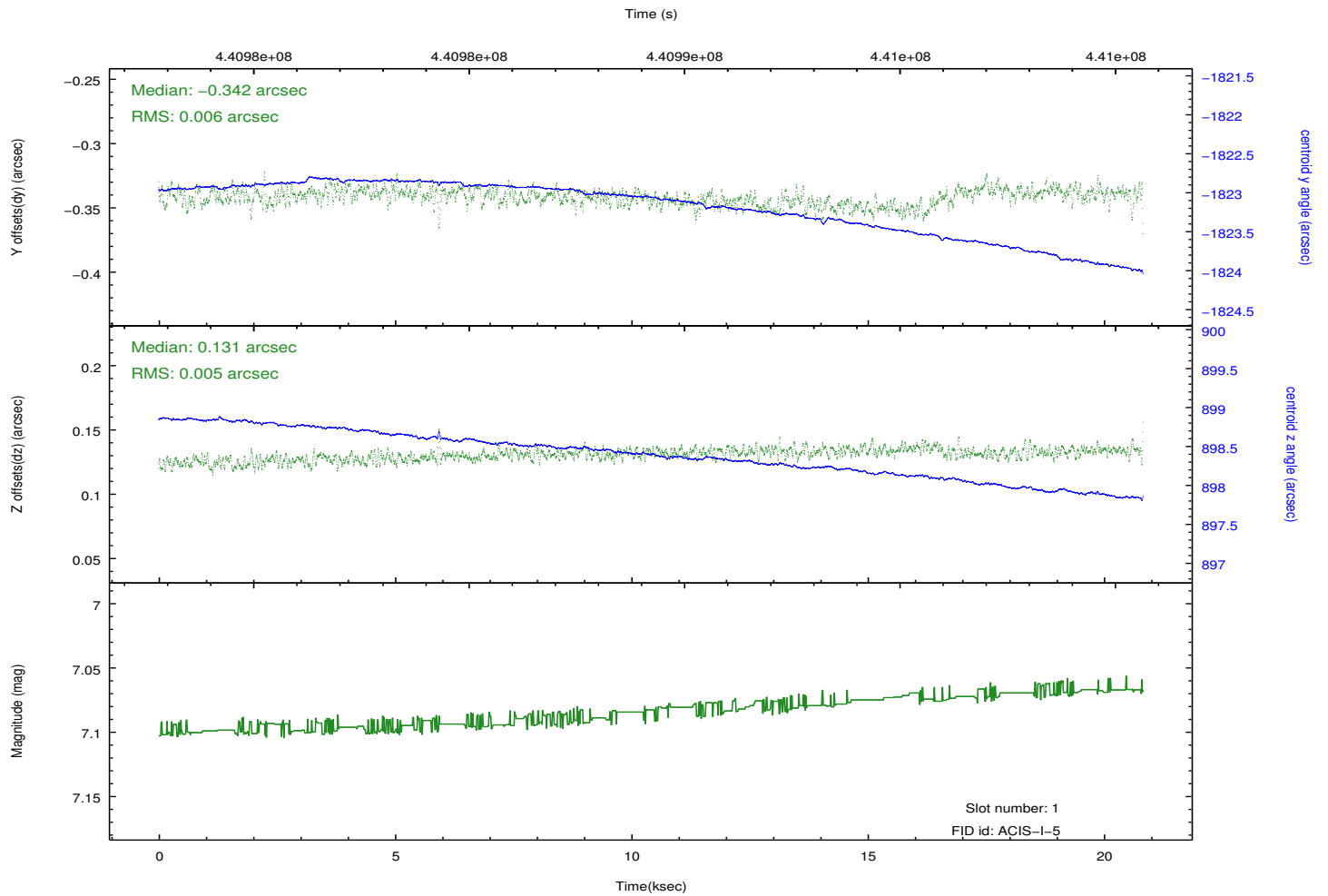
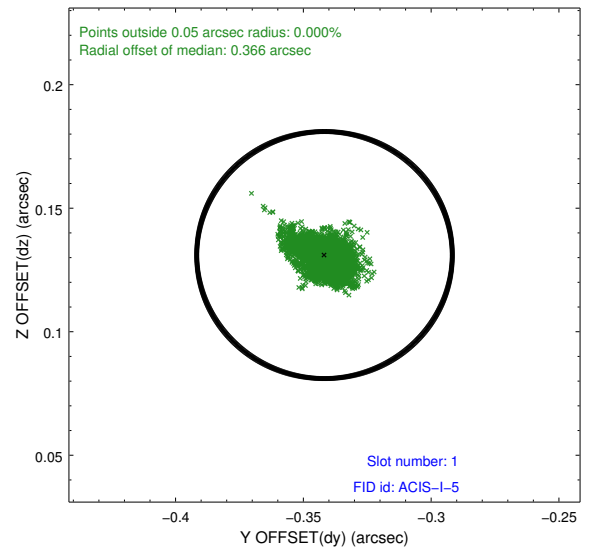
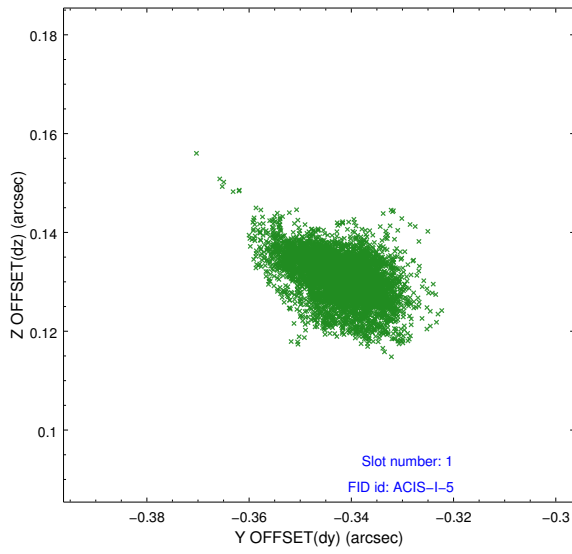


## 2.5 FID Slots

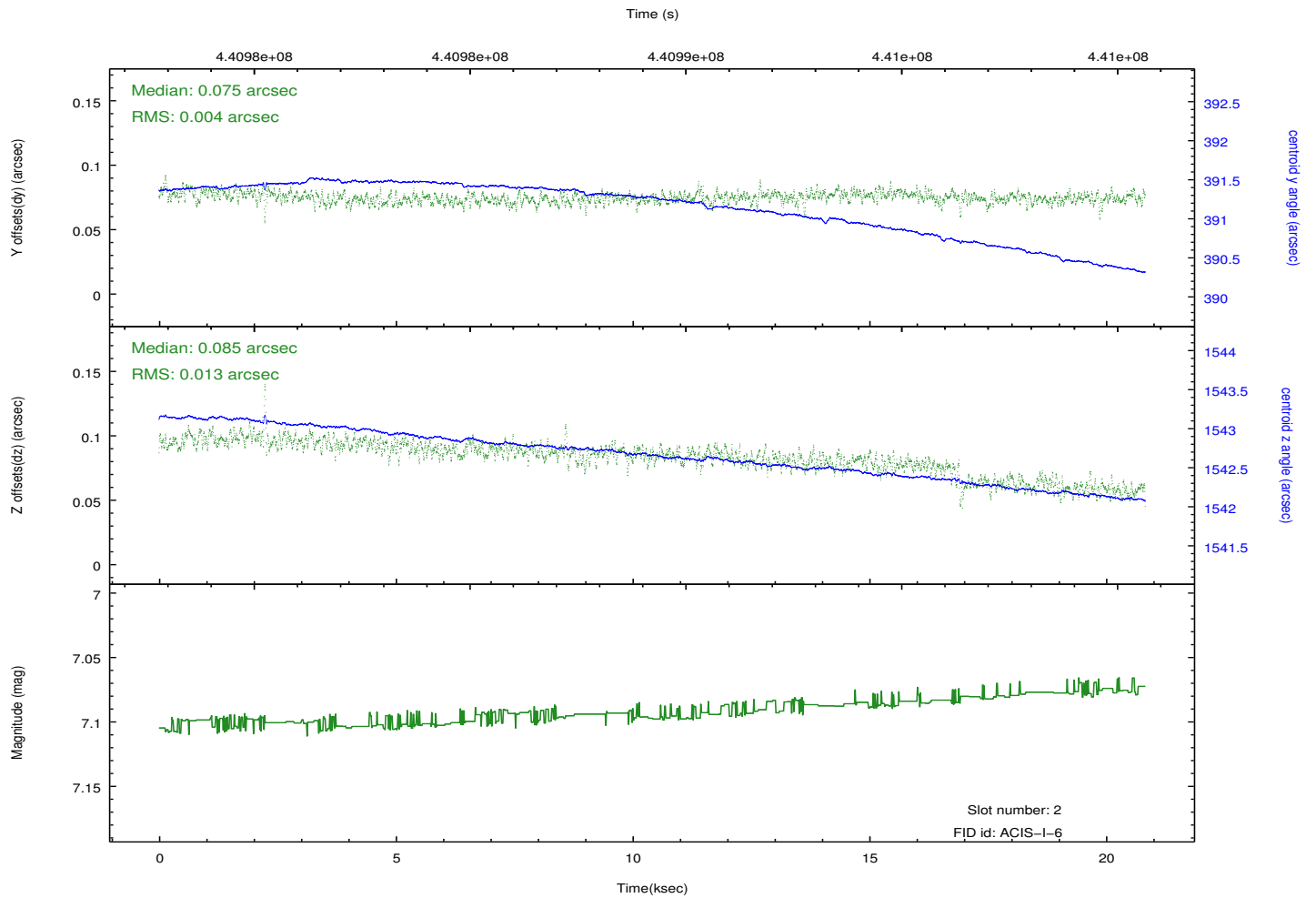
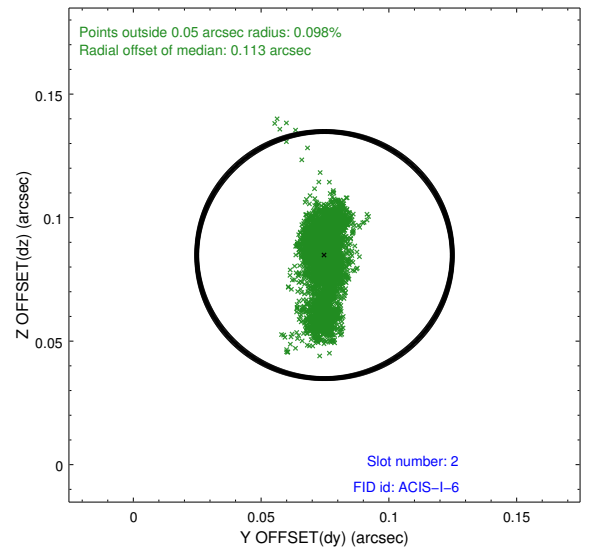
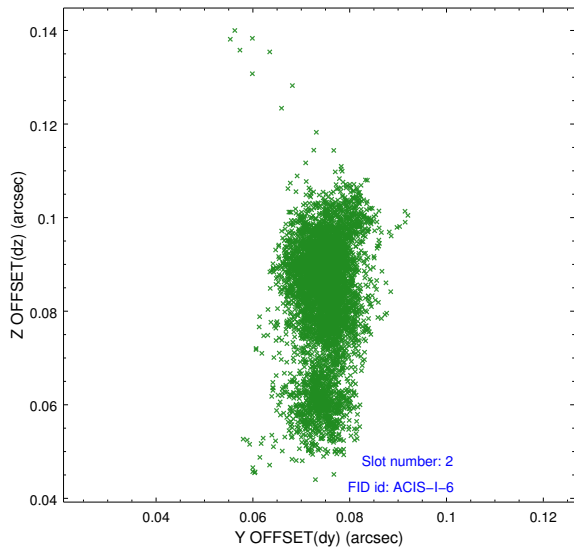
### 2.5.1 Slot 0



## 2.5.2 Slot 1



### 2.5.3 Slot 2



# A Summary

## A.1 Status

V&V Scientist	Beth Sundheim
V&V Date (YYYY-MM-DD)	2012.02.29
V&V Edition	1
V&V Disposition and Status	OK
V&V Charge Time	20.057000154257

## A.2 Comments