

V&V Reference Report

L2 ASCDS Version : 8.4.3

Observation 12342 - L2 Version 2
Chandra X-Ray Center

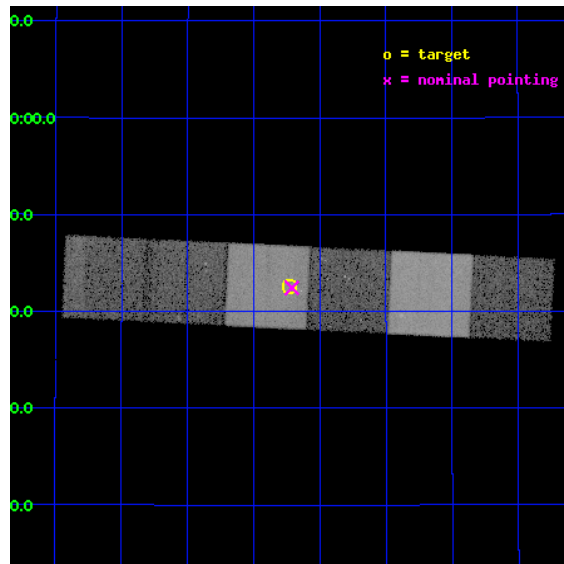
L2 Processing Date : Feb 18 2012

Contents

1	Front	2
2	OBI	3
2.1	OBI	3
2.1.1	Images	3
2.1.2	Bias	3
2.1.3	Parameters	4
2.1.4	Events	4
2.2	Compared Parameters	5
2.3	Aspect	6
2.4	Star Slots	9
2.4.1	Slot 3	9
2.4.2	Slot 4	10
2.4.3	Slot 5	11
2.4.4	Slot 6	12
2.4.5	Slot 7	13
2.5	FID Slots	14
2.5.1	Slot 0	14
2.5.2	Slot 1	15
2.5.3	Slot 2	16
A	Summary	17
A.1	Status	17
A.2	Comments	17

1 Front

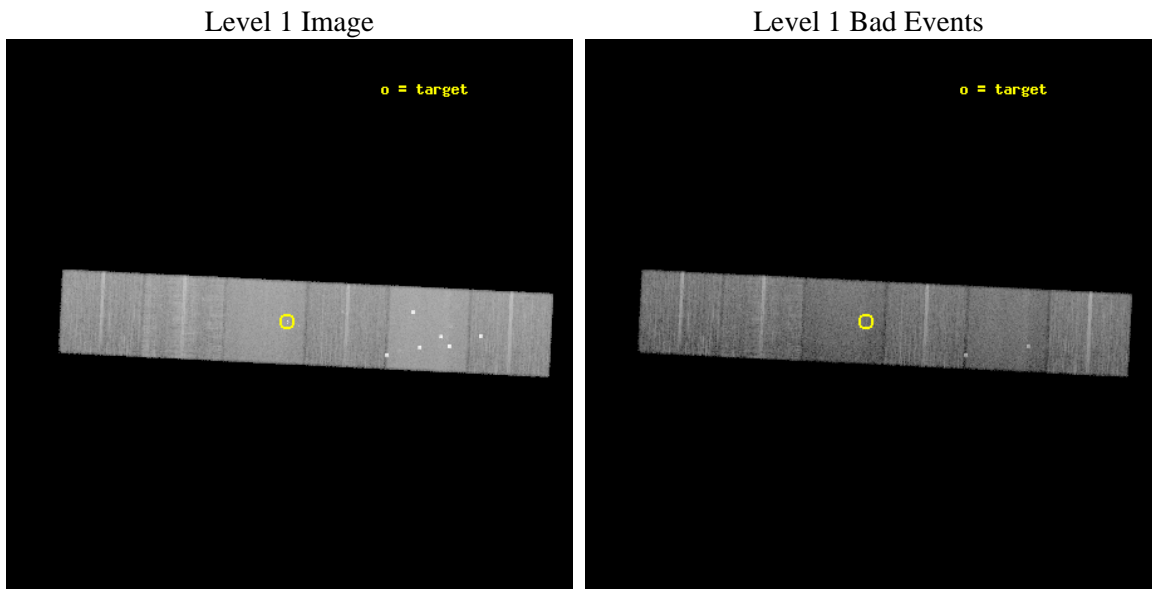
seq_num	200678	Sequence number
obs_id	12342	Observation id
title	Making planetary transits visible in X-rays	Proposal title
observer	Dr. Katja Poppenhaeager	Principal investigator
object	HD 189733	Source name
dtycycle	0	
cycle	P	events from which exps? Prim/Second/Both
ra_targ	300.182083	Observer's specified target RA [deg]
dec_targ	22.710111	Observer's specified target Dec [deg]
ra_nom	300.1777431622	Nominal RA [deg]
dec_nom	22.707357891134	Nominal Dec [deg]
roll_nom	182.77345725845	Nominal Roll [deg]
revision	2	Processing version of data
ontime	20051.063387036	Sum of GTIs [s]
livelime	19797.164749129	Livetime [s]
ontime4	20051.10442704	Sum of GTIs [s]
ontime5	20051.022347033	Sum of GTIs [s]
ontime6	20050.98130703	Sum of GTIs [s]
ontime7	20051.063387036	Sum of GTIs [s]
ontime8	20050.940267026	Sum of GTIs [s]
ontime9	20050.899227023	Sum of GTIs [s]
l2events	208686	Number of level 2 events



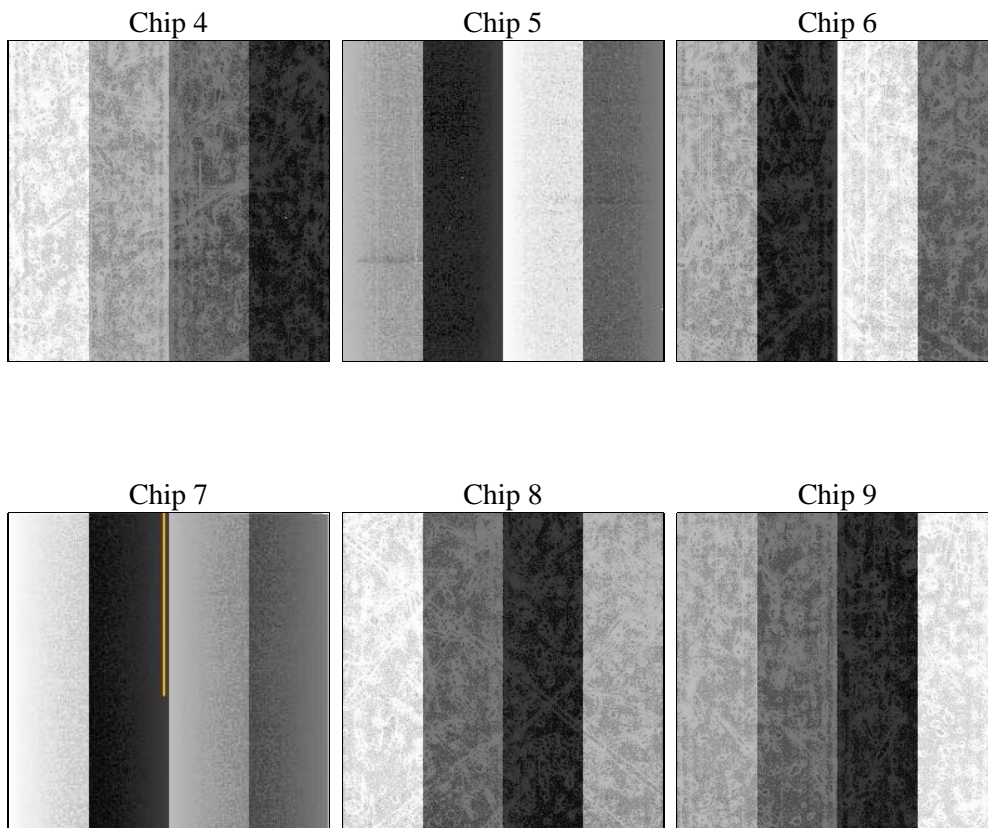
2 OBI

2.1 OBI

2.1.1 Images



2.1.2 Bias



2.1.3 Parameters

obi_num	1	Obi number	sched_exp_time	20000.000000	[s] Scheduled observation exposure time
ascdsver	8.4.3	Processing system revision	ontime	20051.063387036	Sum of GTIs [s]
caldbver	4.4.8	 	ontime4	20051.10442704	Sum of GTIs [s]
date	2012-02-18T17:59:18	Date and time of file creation	ontime5	20051.022347033	Sum of GTIs [s]
revision	2	Processing version of data	ontime6	20050.98130703	Sum of GTIs [s]
			ontime7	20051.063387036	Sum of GTIs [s]
			ontime8	20050.940267026	Sum of GTIs [s]
			ontime9	20050.899227023	Sum of GTIs [s]
			l1events	931861	Number of level 1 events

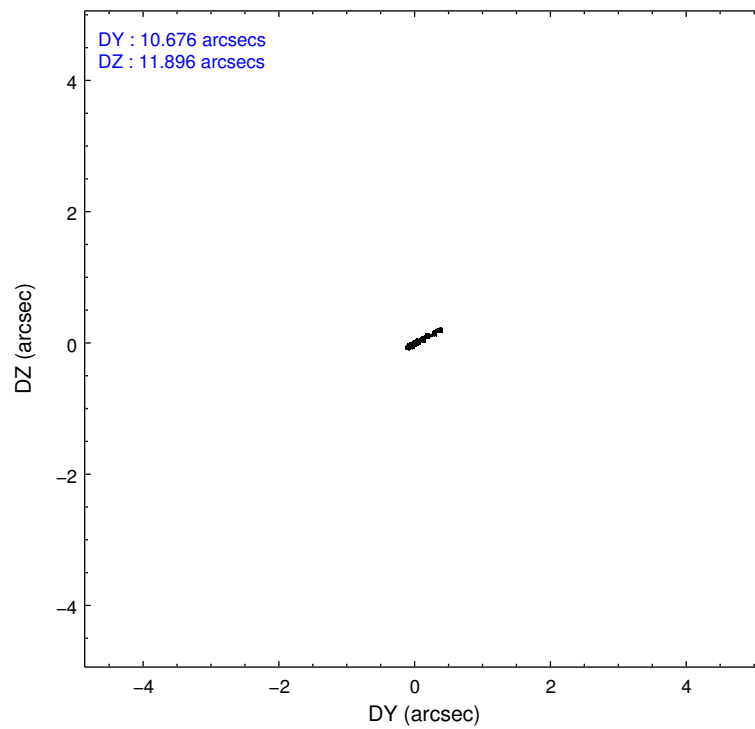
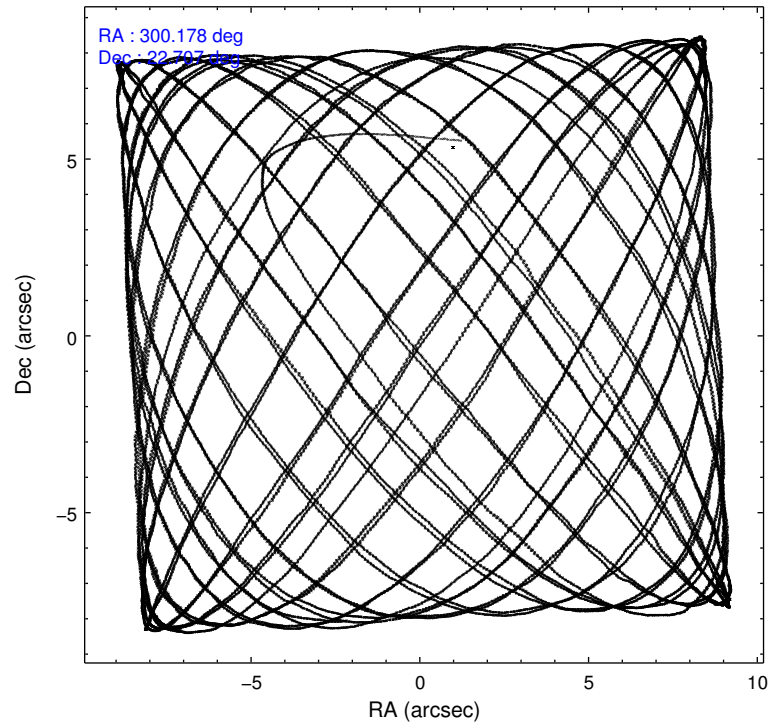
2.1.4 Events

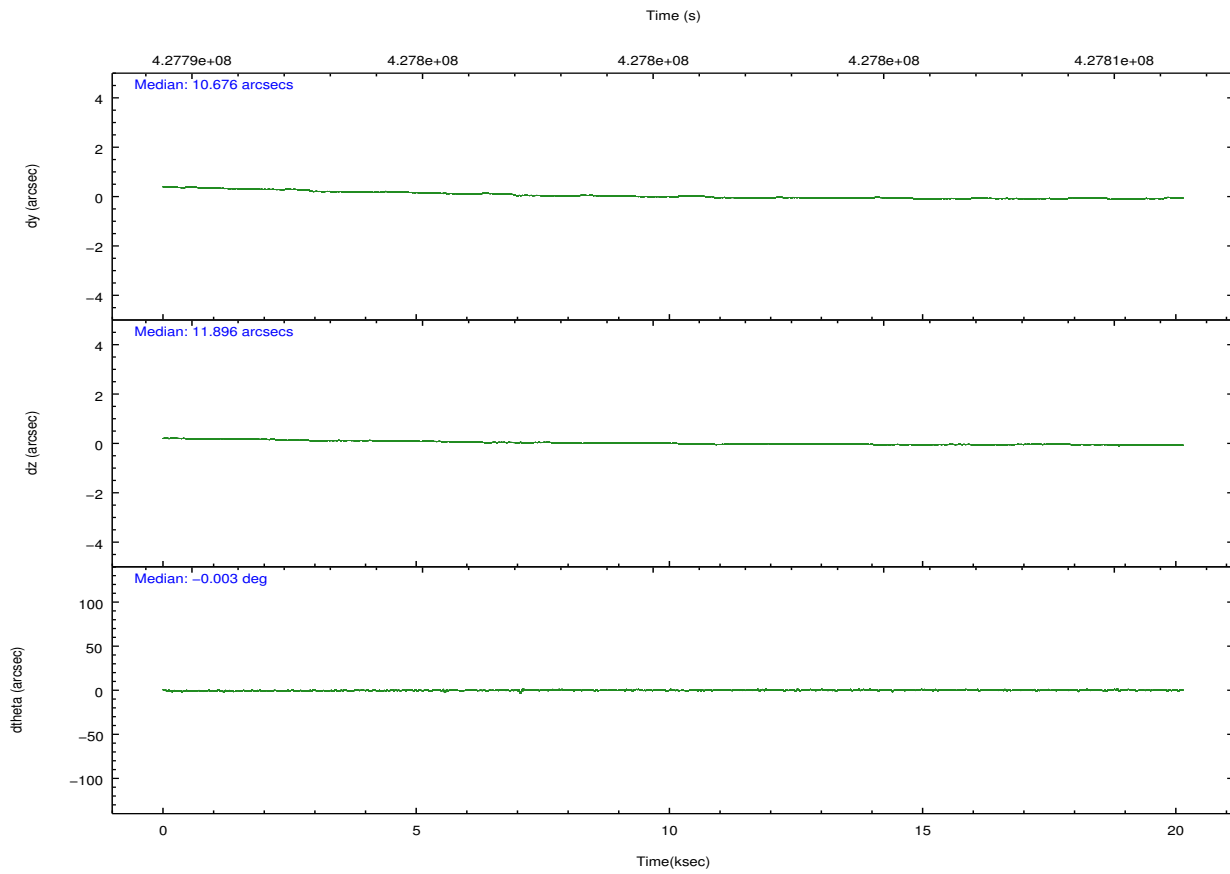
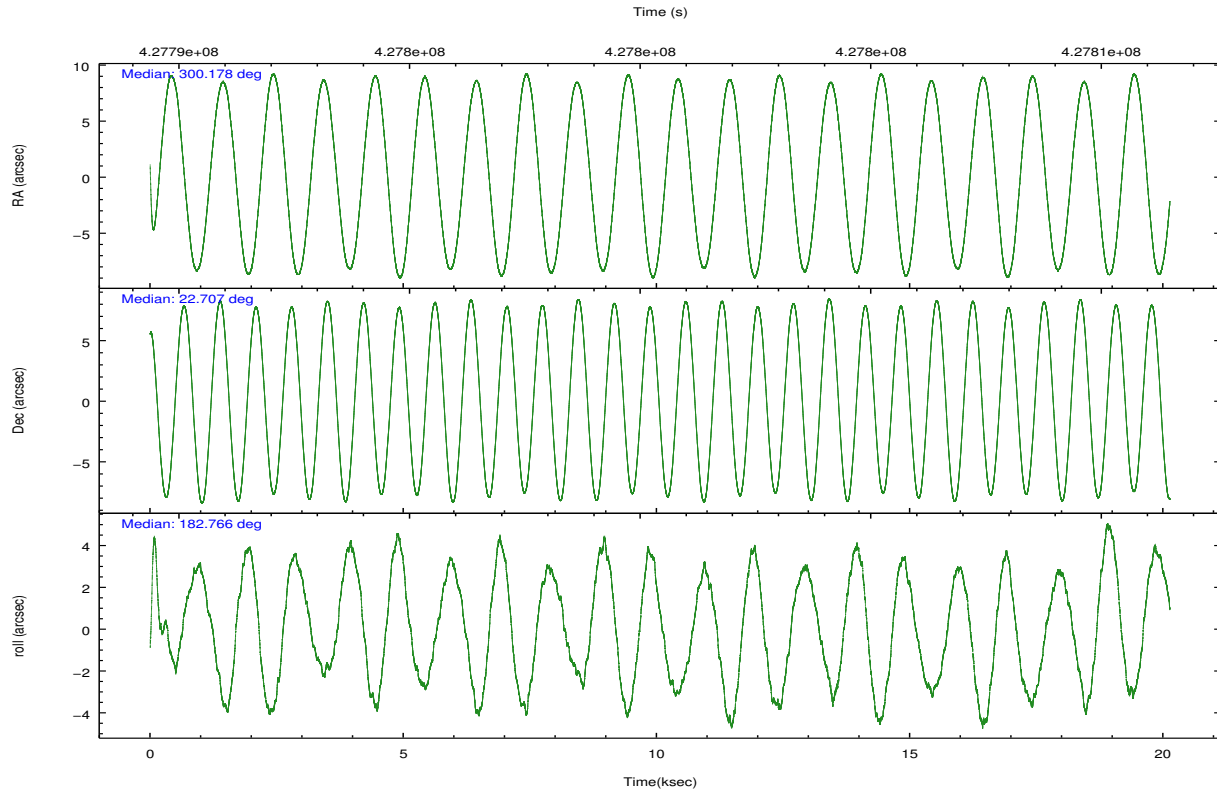
	ccd 4	ccd 5	ccd 6	ccd 7	ccd 8	ccd 9		ccd 4	ccd 5	ccd 6	ccd 7	ccd 8	ccd 9
level 1 events	146619	216955	124703	160260	157057	126267	grade 0 events	10812	24391	5004	6741	11177	5644
rejected events	126646	99590	110244	88816	117486	110977		7%	11%	4%	4%	7%	4%
rejected %	86%	45%	88%	55%	74%	87%	grade 1 events	131	1450	67	187	102	83
								0%	0%	0%	0%	0%	0%
							grade 2 events	3477	33934	3308	14547	9385	3275
								2%	15%	2%	9%	5%	2%
							grade 3 events	1597	4347	1445	6243	4285	1607
								1%	2%	1%	3%	2%	1%
							grade 4 events	1516	3466	1459	6172	4032	1540
								1%	1%	1%	3%	2%	1%
							grade 5 events	6027	14689	5929	16341	8633	6591
								4%	6%	4%	10%	5%	5%
							grade 6 events	2573	51249	3246	37750	10700	3227
								1%	23%	2%	23%	6%	2%
							grade 7 events	120486	83429	104245	72279	108743	104300
								82%	38%	83%	45%	69%	82%

2.2 Compared Parameters

Parameter	Planned	Actual	Parameter	Planned	Actual
Instrument	ACIS	ACIS	Obspar format version number	7	7
Detector	ACIS-456789	ACIS-456789	Obspar file type	PREDICTED	ACTUAL
Grating	NONE	NONE	Obspar update status	NONE	UPDATED
Data mode	FAINT	FAINT	CCD I0 on	N	N
Observation mode	POINTING	POINTING	CCD I1 on	N	N
[deg] Pointing RA	300.202452	300.1777431622012	CCD I2 on	N	N
[deg] Pointing Dec	22.722477	22.70735789113379	CCD I3 on	N	N
[deg] Pointing Roll	182.607292	182.7734572584505	CCD S0 on	O1	Y
[mm] SIM focus pos	-0.684267	-0.6828225247311905	CCD S1 on	O3	Y
[mm] SIM defocus	0	0.001444936568705701	CCD S2 on	O5	Y
[mm] SIM translation stage pos	-190.132523	-190.1400660498719	CCD S3 on	Y	Y
[mm] SIM translation stage offset	0	0.00754346686406393	CCD S4 on	O4	Y
Phase constraints	Y	Y	CCD S5 on	O2	Y
[d] Phase period	2.218573	2.218573	Number of optional ACIS chips dropped	0	0
[d] Phase epoch (MJD)	55563.490403	55563.490403	On-chip summing requested	N	N
Phase start	0.947800	0.947800	Subarray requested	NONE	NONE
Phase end	0.052200	0.052200	Alternating exposures requested	N	N
Phase start error	0.010400	0.010400	[s] Primary exposure time	0.000000	3.2
Phase end error	0.010400	0.010400			
[s] Observation start time (MET)	427790508.184000	427789196.93666			
Observation start date	2011-07-23T06:40:42	2011-07-23T06:19:56			
[s] Observation end time (MET)	427810508.184000	427811584.98783			
Observation end date	2011-07-23T12:14:02	2011-07-23T12:33:04			
Read mode	TIMED	TIMED			

2.3 Aspect



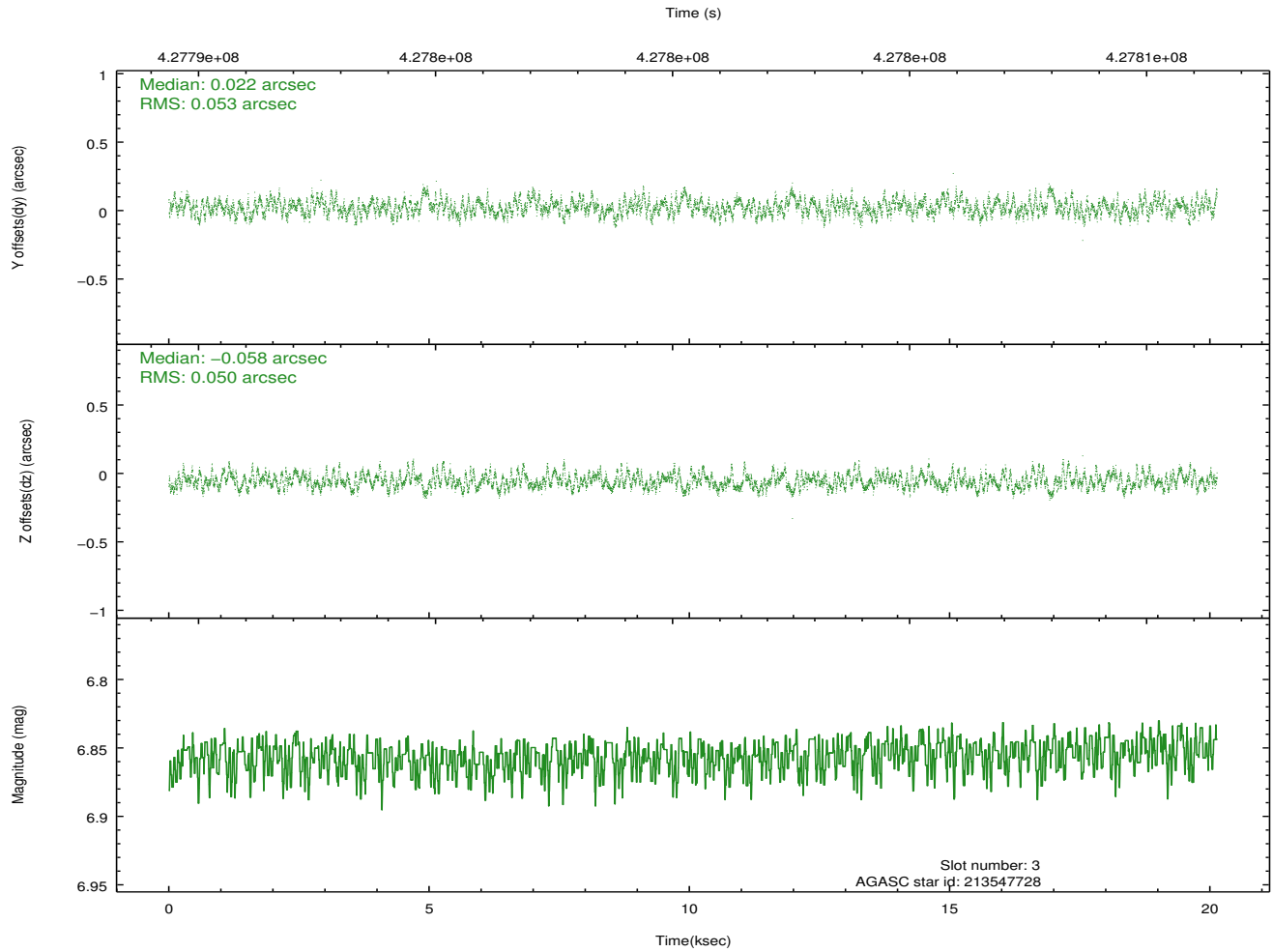
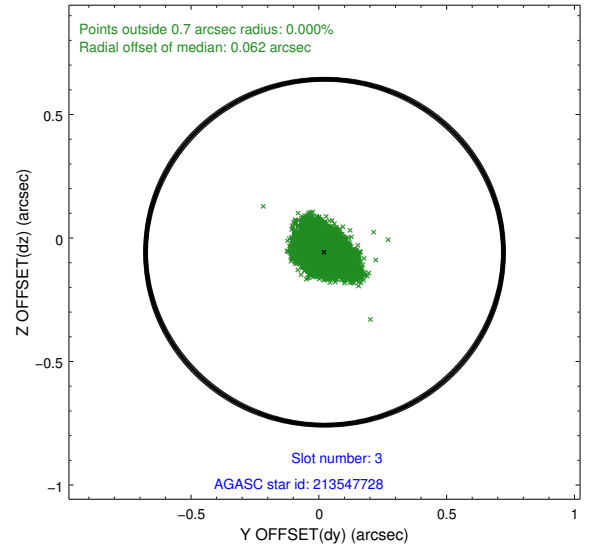
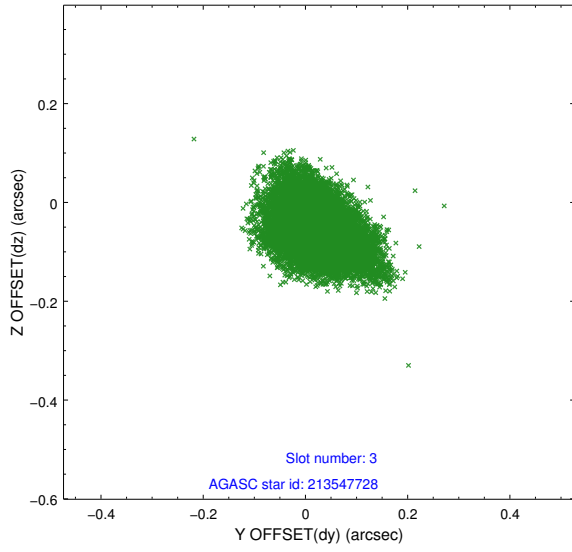


Slot Statistics

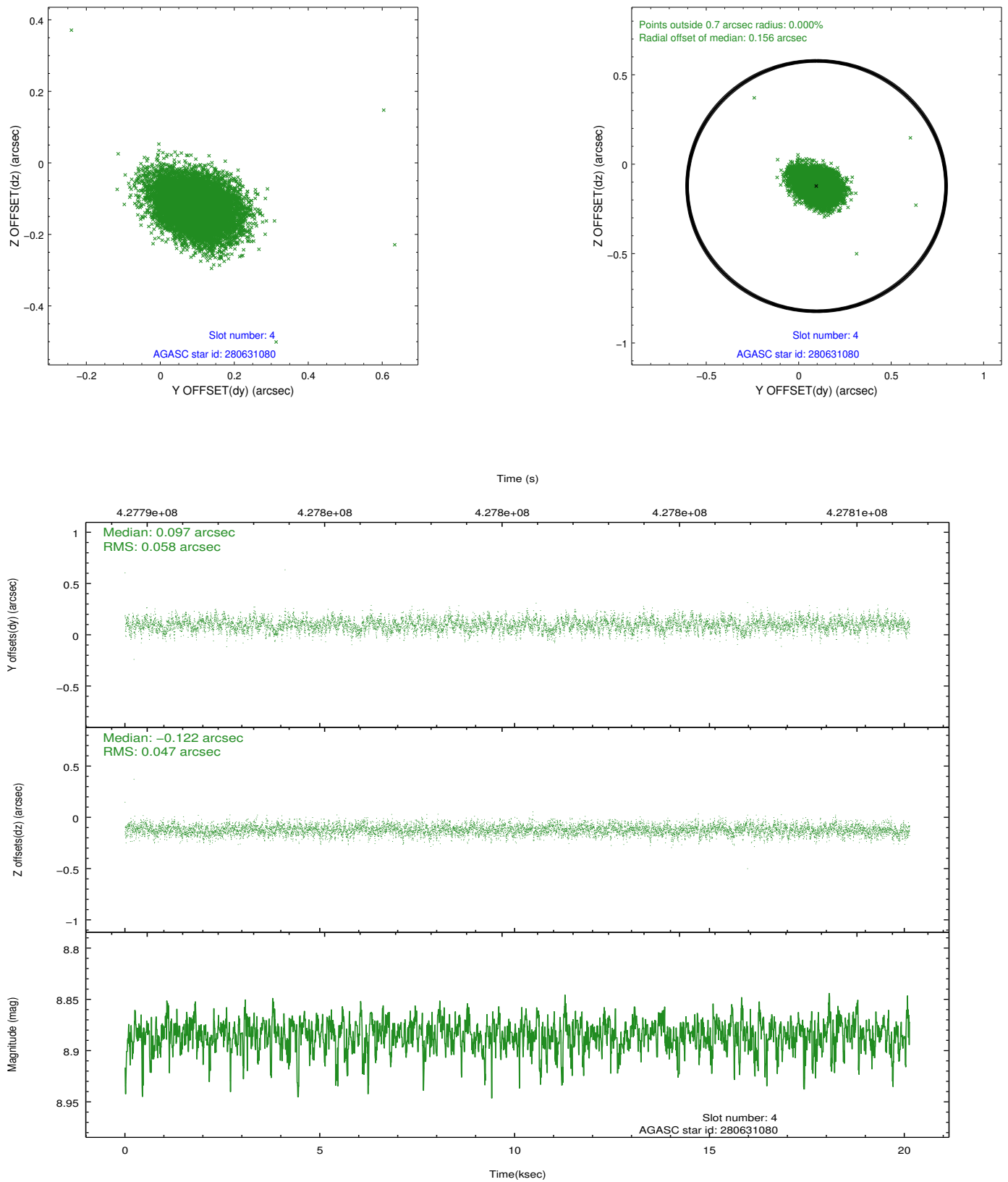
slot	status	id	mag	n_pts	med_dy	med_dz	dr1	dr2	ra	dec	mean_y	mean_z
0	FID	ACIS-S-2	7.01	4912	-0.109	-0.079	0.006	0.011	0.000000	0.000000	-763.73	-1733.27
1	FID	ACIS-S-4	7.09	4912	0.135	0.045	0.007	0.012	0.000000	0.000000	2149.75	175.07
2	FID	ACIS-S-6	7.23	4912	-0.054	0.042	0.008	0.013	0.000000	0.000000	398.61	812.71
3	GUIDE	213547728	6.86	9824	0.022	-0.058	0.078	0.125	300.592091	22.151462	-1204.37	2110.96
4	GUIDE	280631080	8.88	9819	0.097	-0.122	0.078	0.130	299.578484	23.303541	1966.15	-2187.50
5	GUIDE	280632896	9.05	9820	-0.244	0.107	0.080	0.135	299.532468	22.850727	2199.40	-567.11
6	GUIDE	280640784	9.11	9813	0.178	-0.066	0.126	0.198	300.454026	22.565622	-809.25	601.30
7	GUIDE	280632480	7.98	9818	-0.044	0.128	0.072	0.120	300.237301	22.846979	-135.70	-442.23

2.4 Star Slots

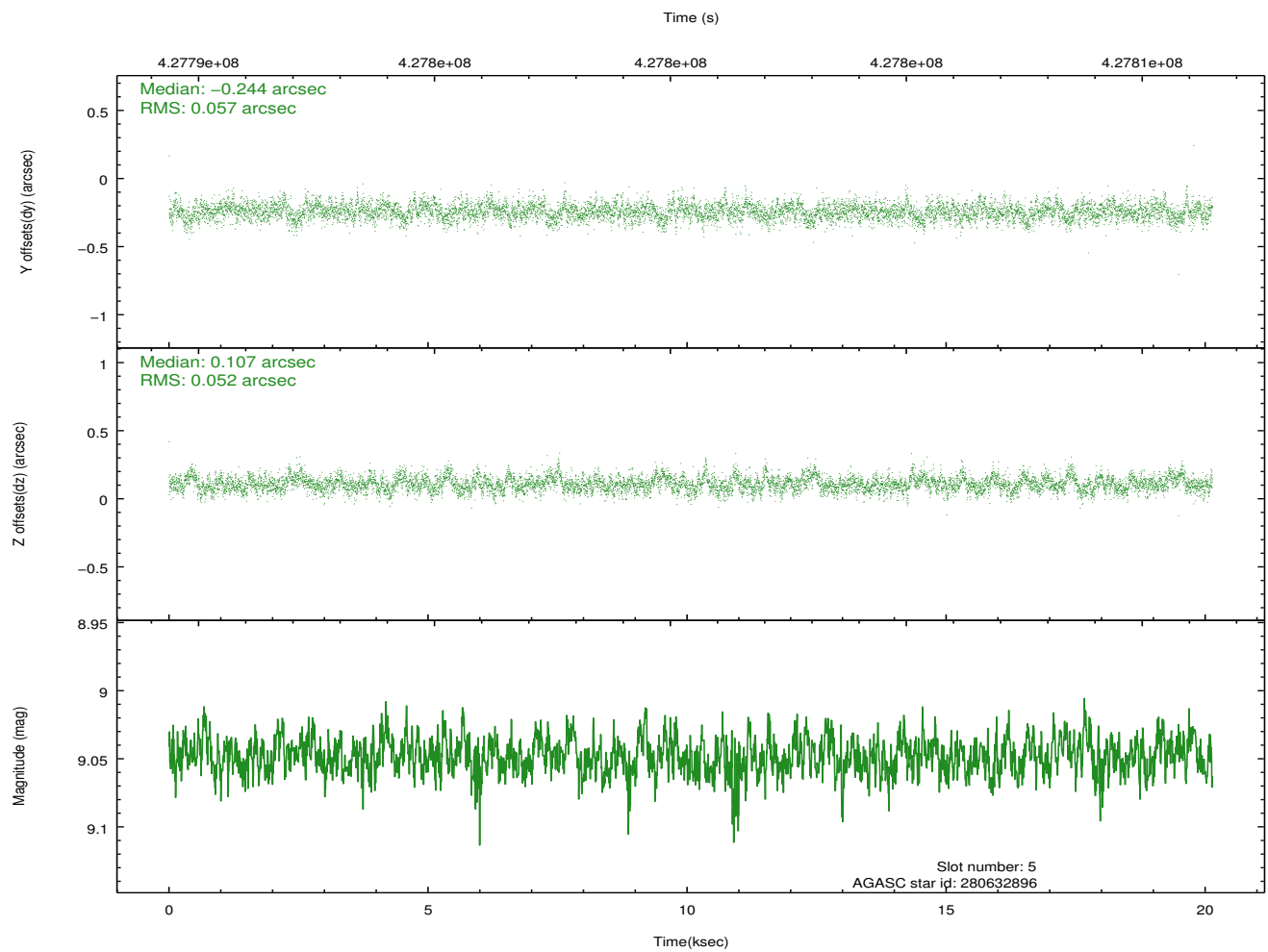
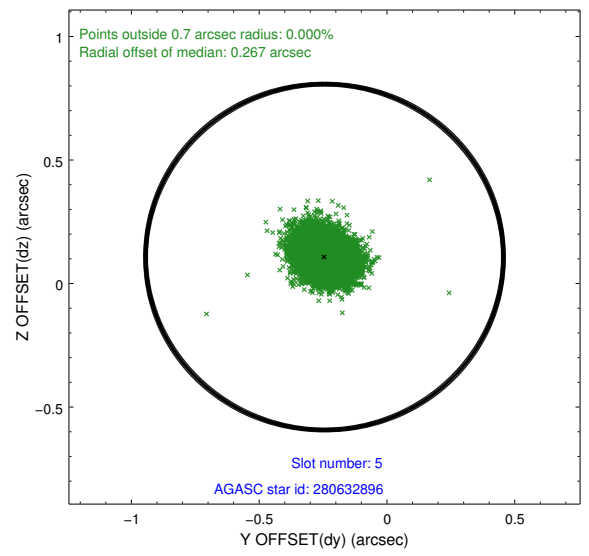
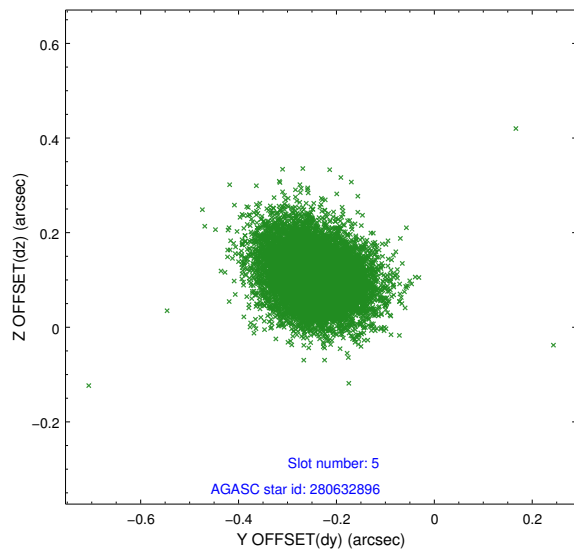
2.4.1 Slot 3



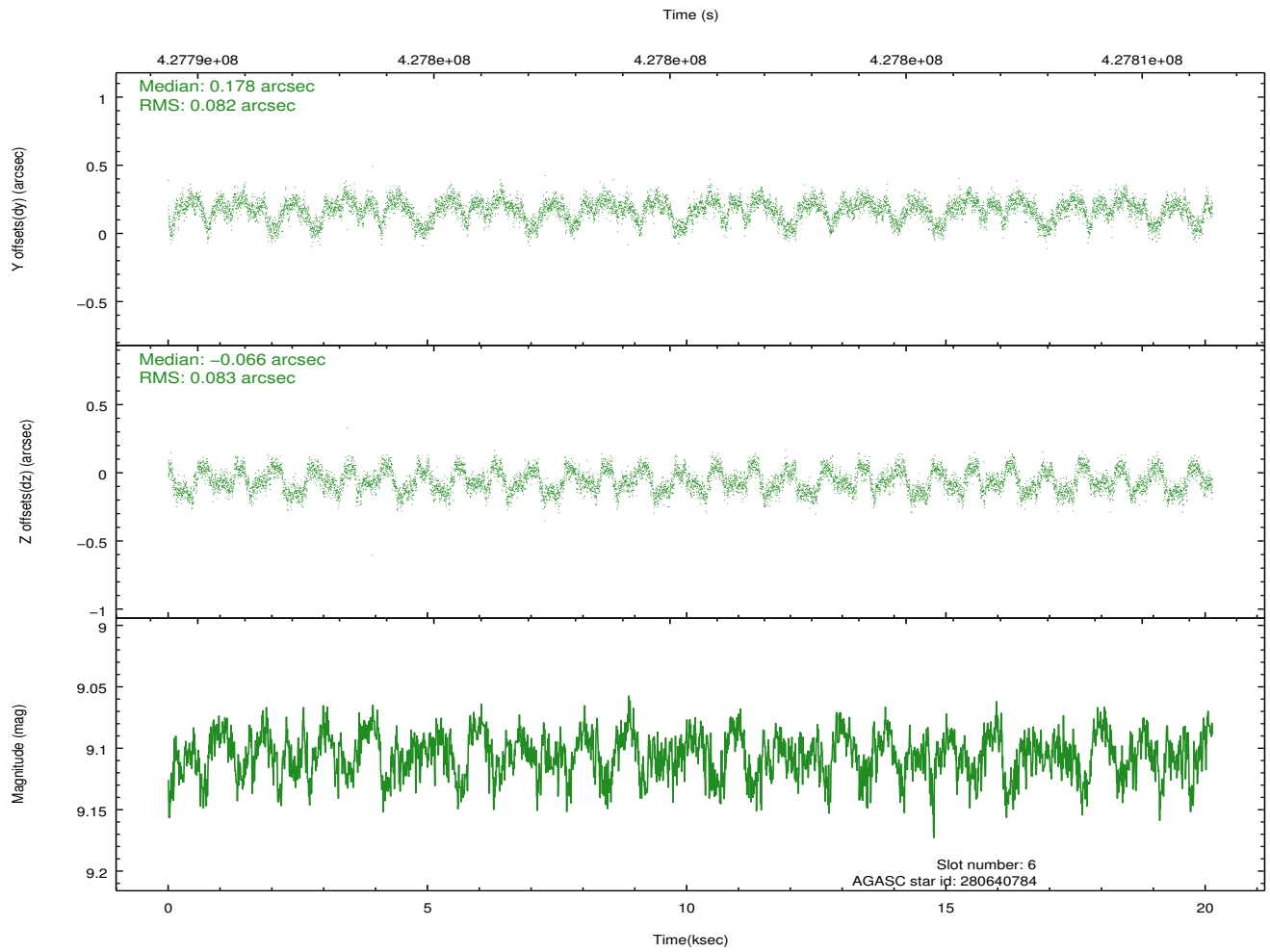
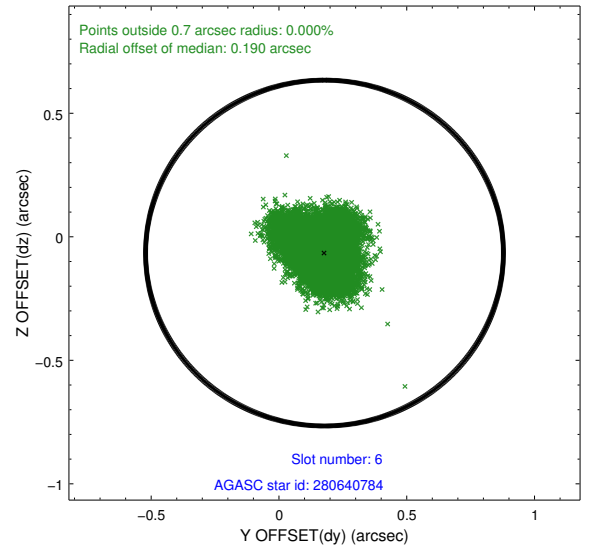
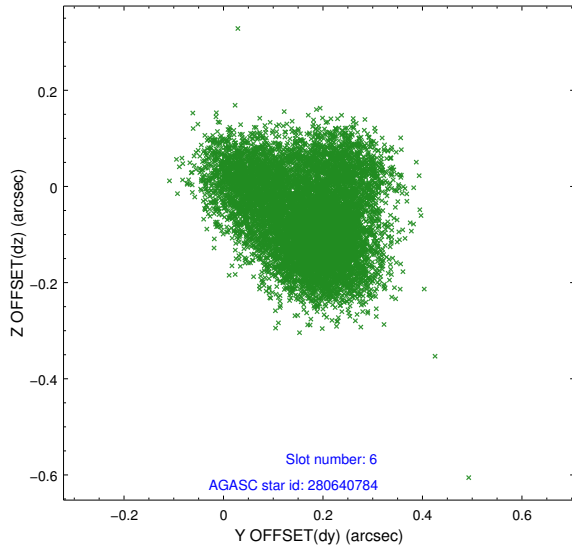
2.4.2 Slot 4



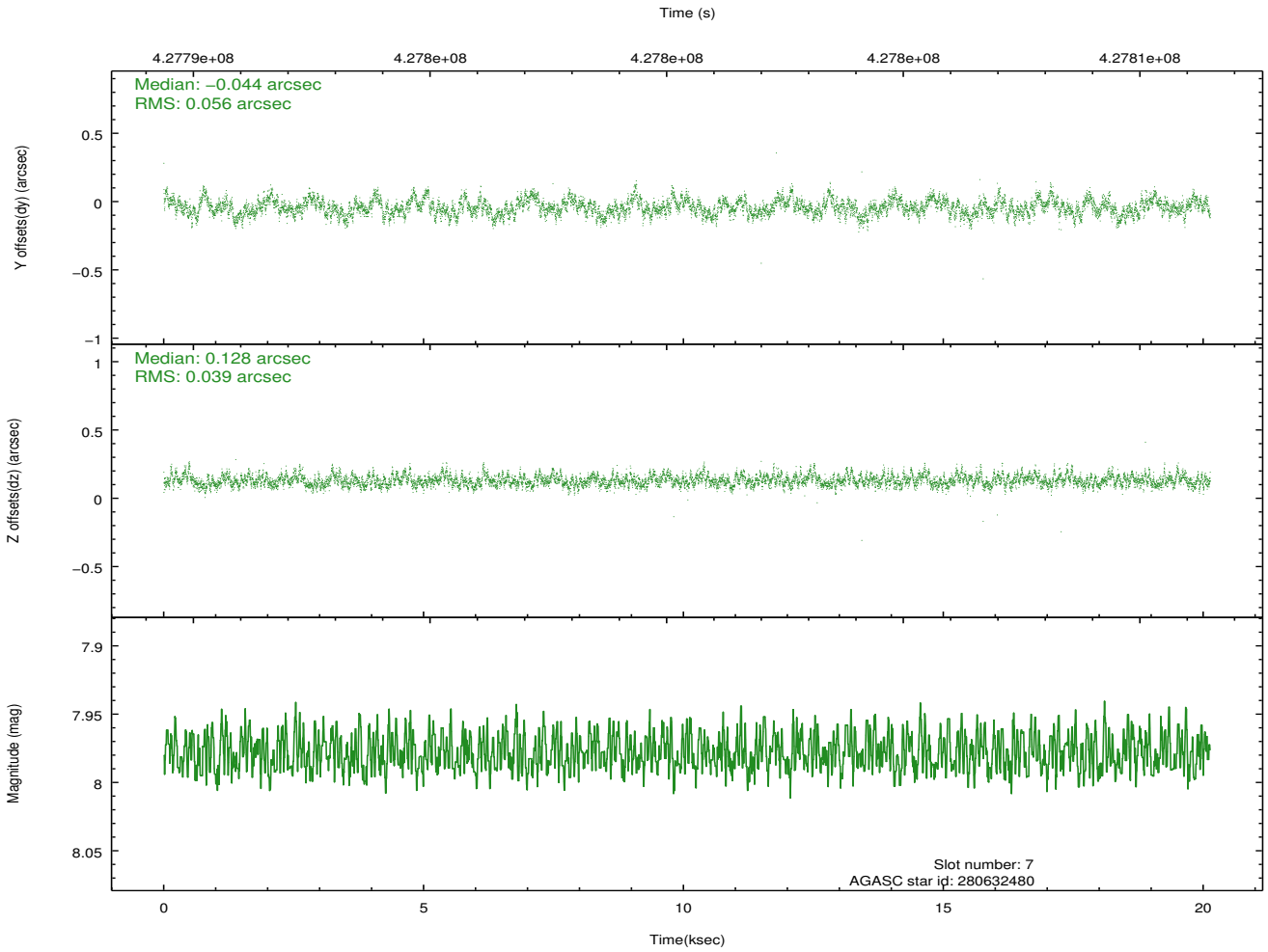
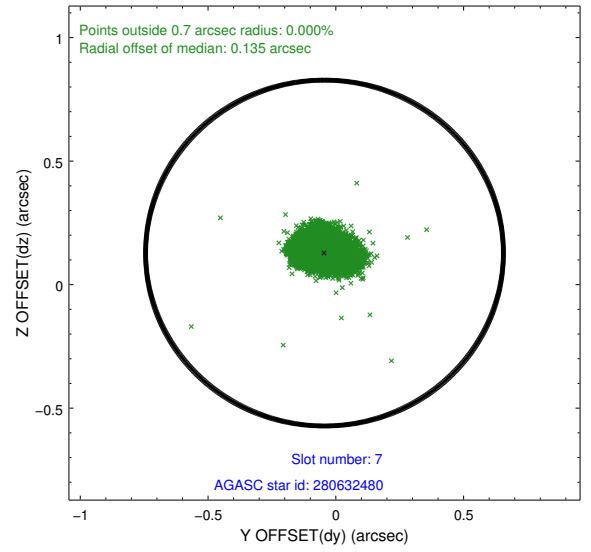
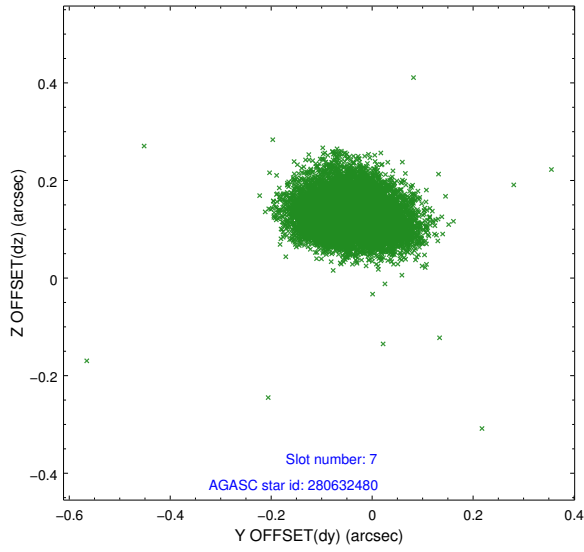
2.4.3 Slot 5



2.4.4 Slot 6

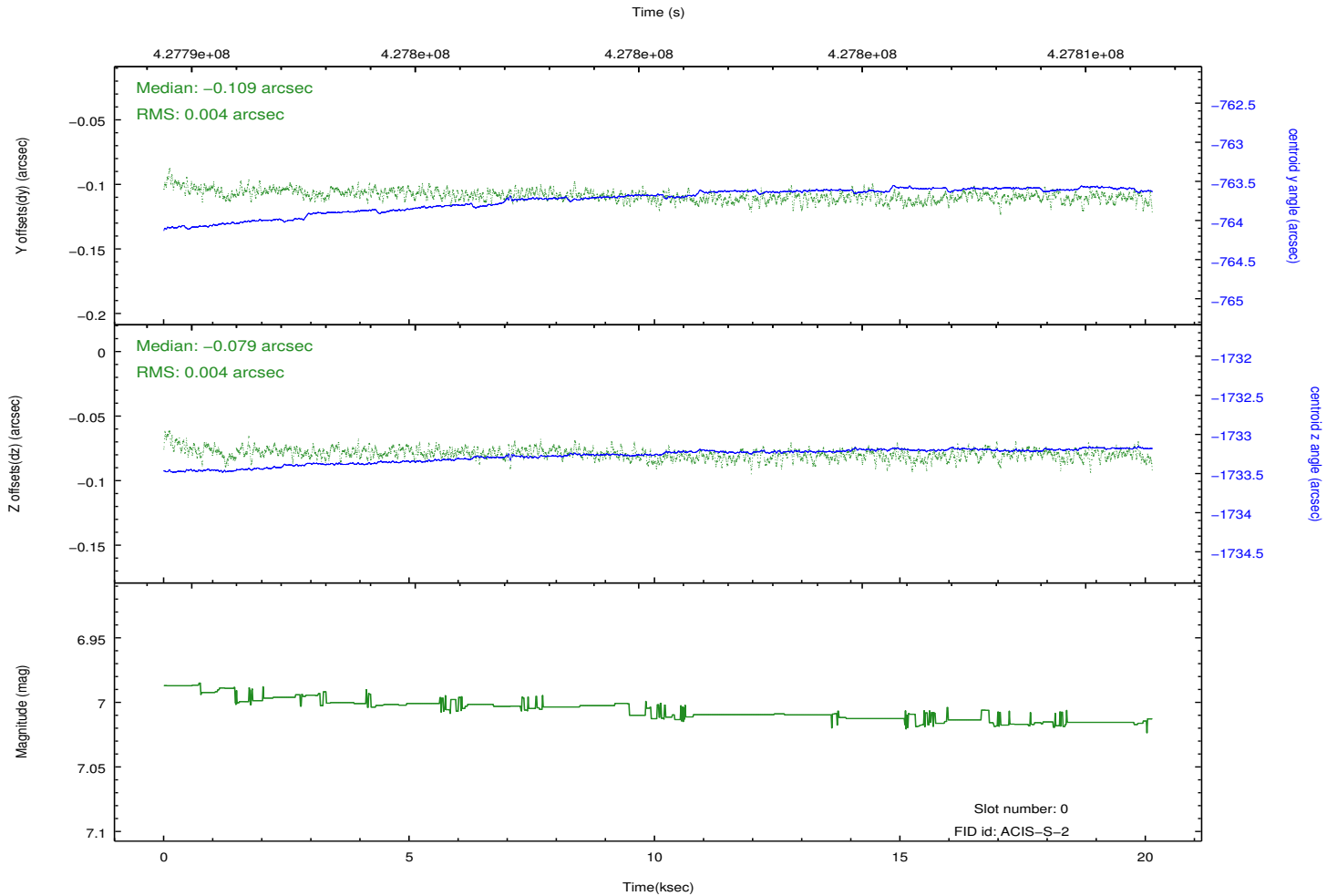
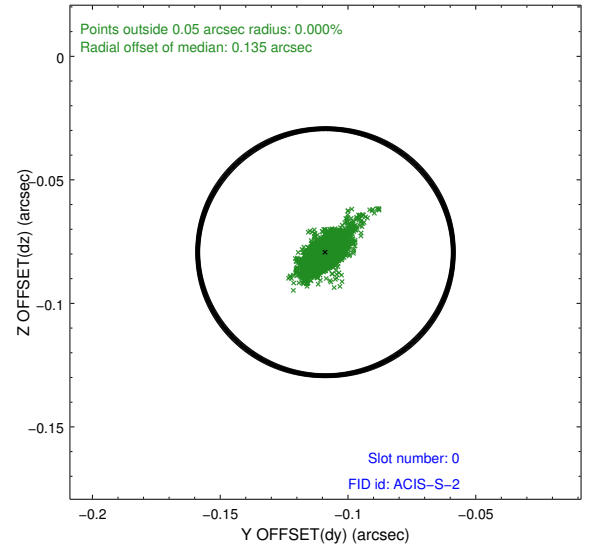
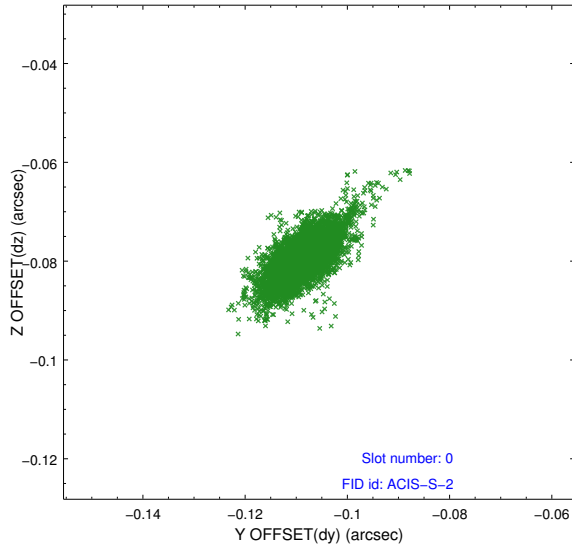


2.4.5 Slot 7

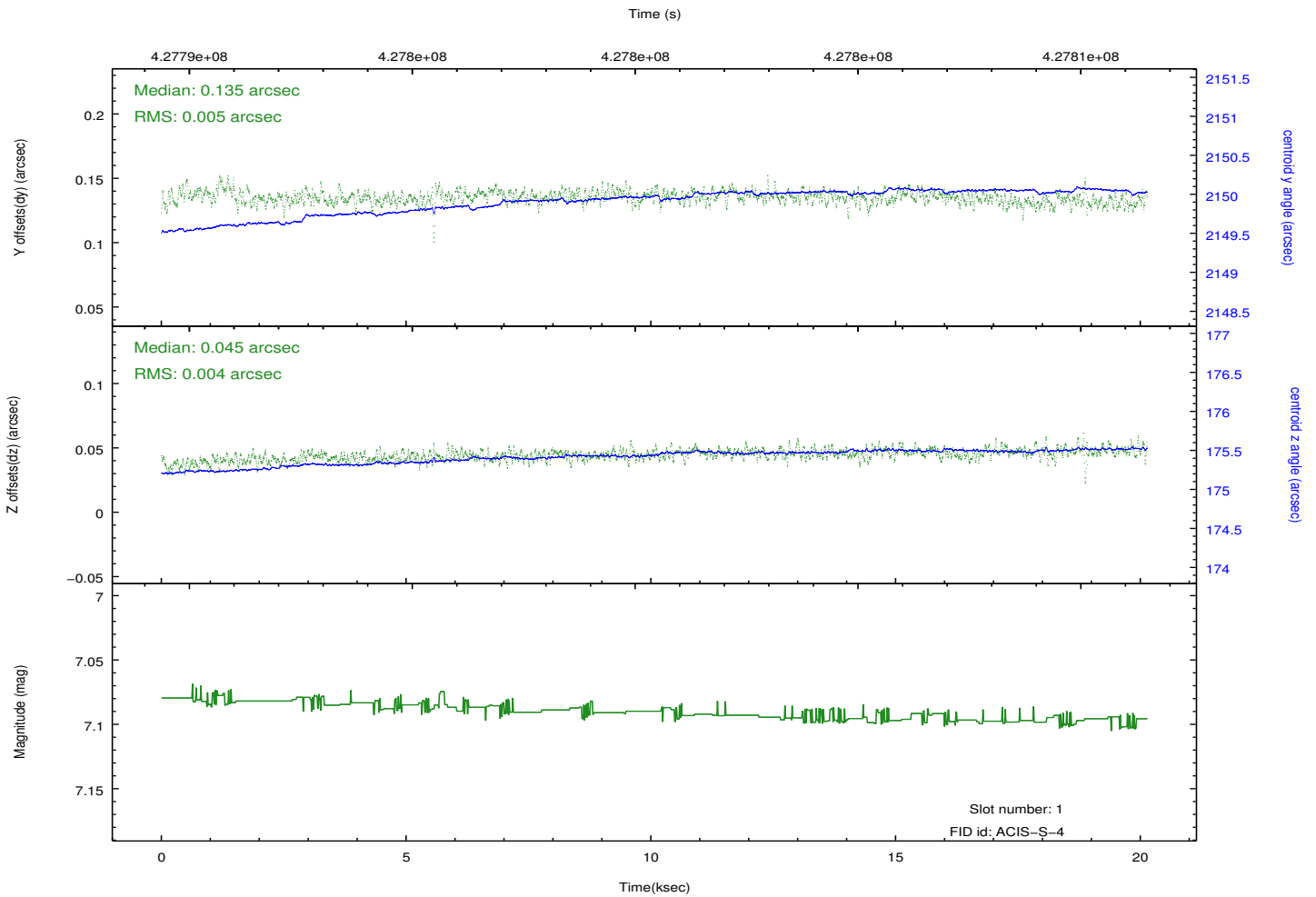
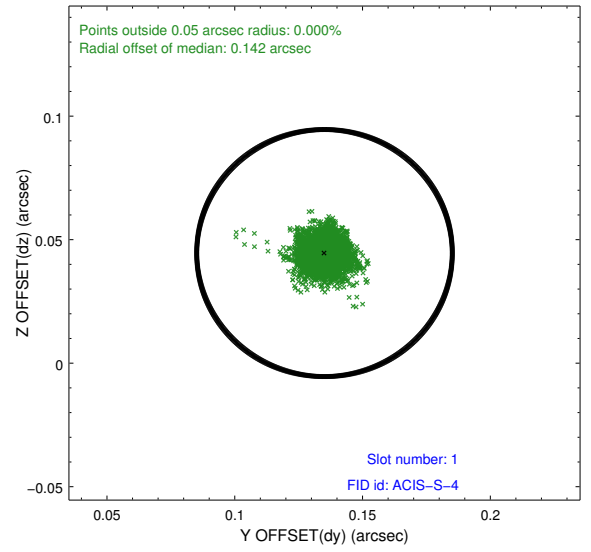
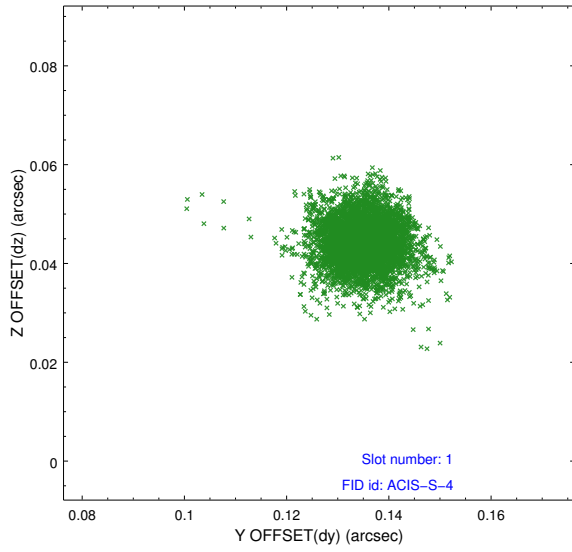


2.5 FID Slots

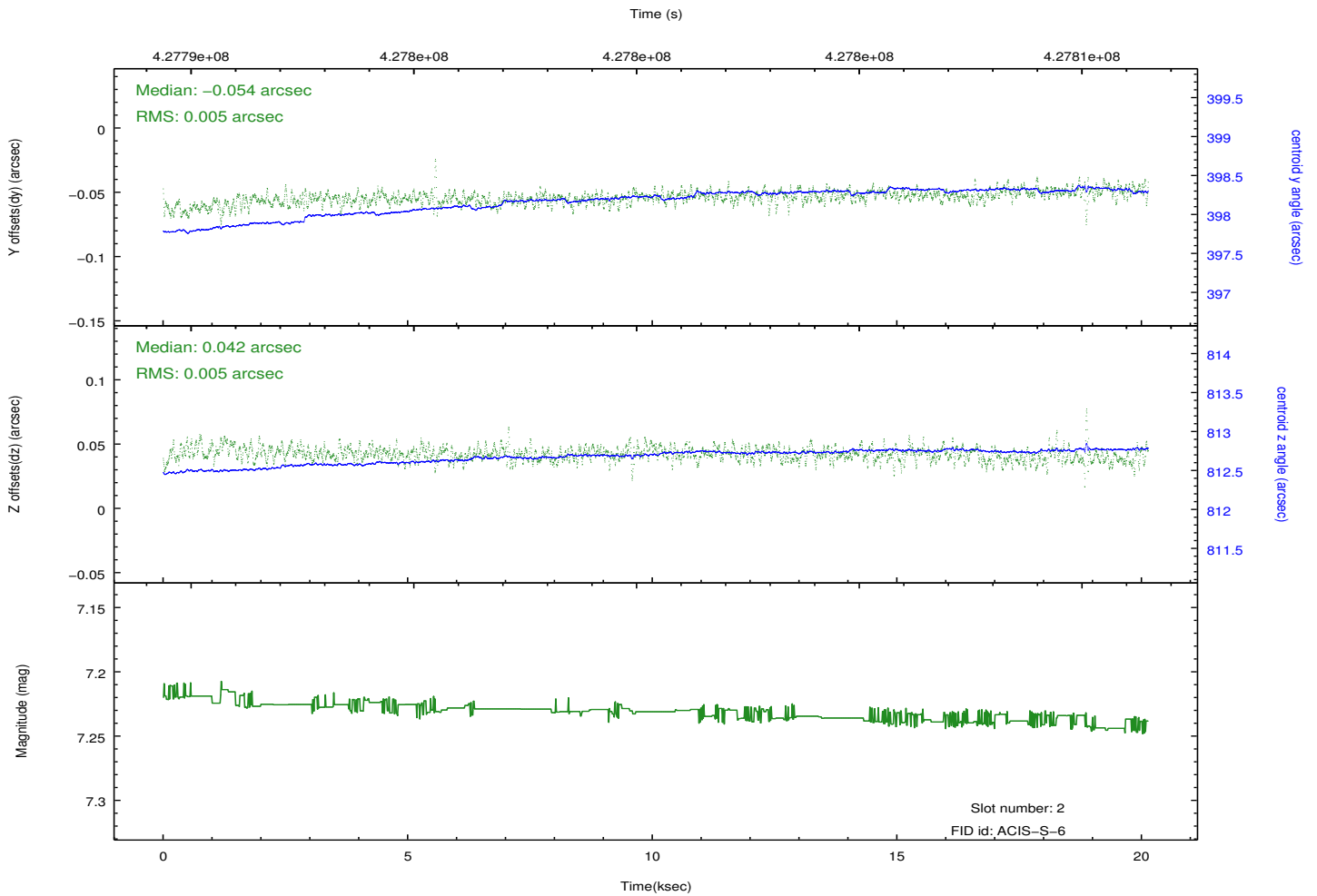
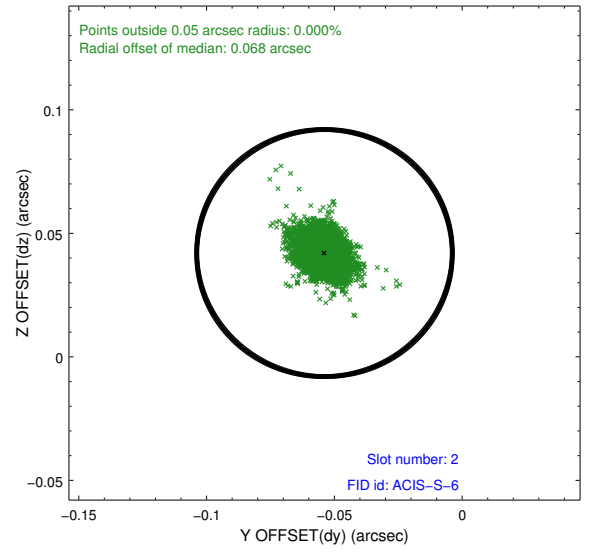
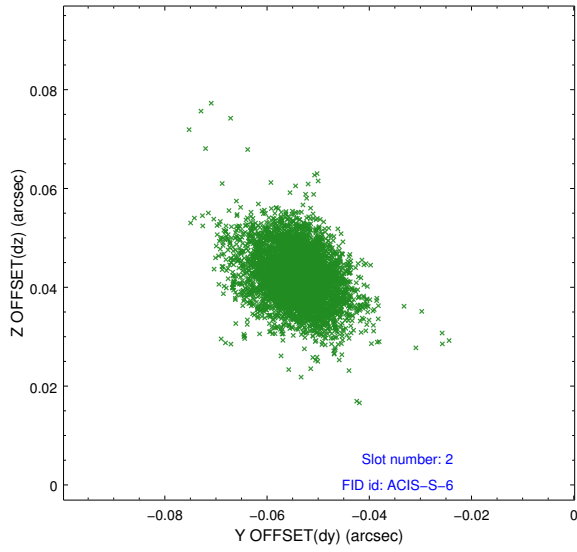
2.5.1 Slot 0



2.5.2 Slot 1



2.5.3 Slot 2



A Summary

A.1 Status

V&V Scientist	Jen Lauer
V&V Date (YYYY-MM-DD)	2012.02.21
V&V Edition	1
V&V Disposition and Status	OK
V&V Charge Time	20.051063385248

A.2 Comments