

V&V Reference Report

L2 ASCDS Version : 8.4.5

Observation 12362 - L2 Version 2
Chandra X-Ray Center

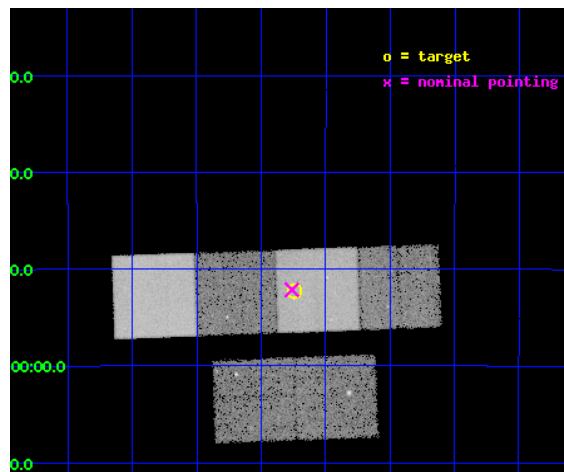
L2 Processing Date : Jul 7 2012

Contents

1	Front	2
2	OBI	3
2.1	OBI	3
2.1.1	Images	3
2.1.2	Bias	3
2.1.3	Parameters	4
2.1.4	Events	4
2.2	Compared Parameters	5
2.3	Aspect	6
2.4	Star Slots	9
2.4.1	Slot 3	9
2.4.2	Slot 4	10
2.4.3	Slot 5	11
2.4.4	Slot 6	12
2.4.5	Slot 7	13
2.5	FID Slots	14
2.5.1	Slot 0	14
2.5.2	Slot 1	15
2.5.3	Slot 2	16
A	Summary	17
A.1	Status	17
A.2	Comments	17

1 Front

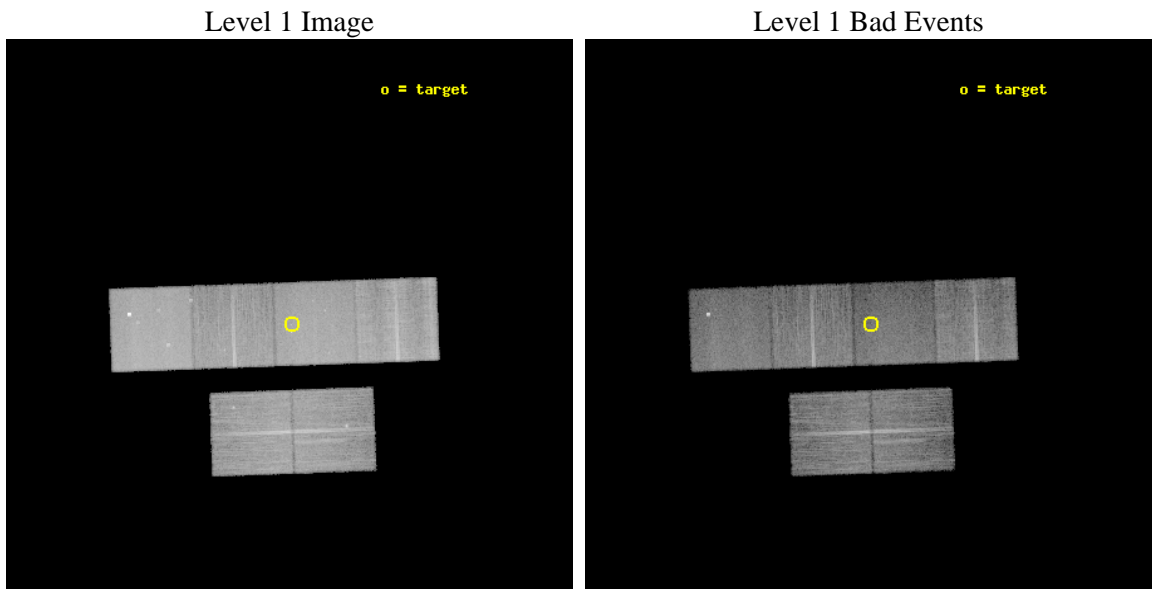
seq_num	200696	Sequence number
obs_id	12362	Observation id
title	X-rays from Planetary Nebulae: Unveiling Binarity, Magnetic Fields, and Wind Collisions	Proposal title
observer	Dr. Joel Kastner	Principal investigator
object	NGC 1360	Source name
dtycycle	0	
cycle	P	events from which exps? Prim/Second/Both
ra_targ	53.310833	Observer's specified target RA [deg]
dec_targ	-25.871667	Observer's specified target Dec [deg]
ra_nom	53.315541201974	Nominal RA [deg]
dec_nom	-25.869275766751	Nominal Dec [deg]
roll_nom	357.92771270296	Nominal Roll [deg]
revision	2	Processing version of data
ontime	19903.924942255	Sum of GTIs [s]
livetime	19651.889459931	Livetime [s]
ontime2	19903.965982258	Sum of GTIs [s]
ontime3	19897.319821537	Sum of GTIs [s]
ontime5	19903.883902252	Sum of GTIs [s]
ontime6	19903.842862248	Sum of GTIs [s]
ontime7	19903.924942255	Sum of GTIs [s]
ontime8	19903.760782242	Sum of GTIs [s]
l2events	229702	Number of level 2 events



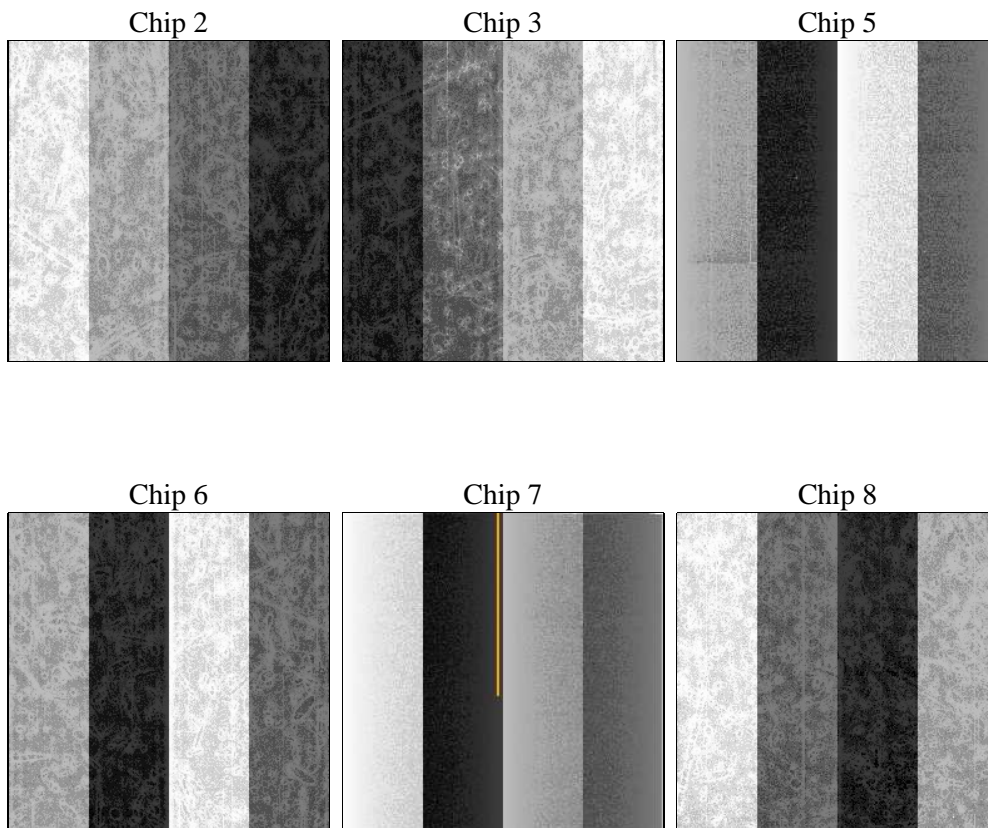
2 OBI

2.1 OBI

2.1.1 Images



2.1.2 Bias



2.1.3 Parameters

obi_num	0	Obi number	sched_exp_time	20000.000000	[s] Scheduled observation exposure time
ascdsver	8.4.5	Processing system revision	ontime	19903.924942255	Sum of GTIs [s]
caldbver	4.5.0	 	ontime2	19903.965982258	Sum of GTIs [s]
date	2012-07-07T03:42:59	Date and time of file creation	ontime3	19897.319821537	Sum of GTIs [s]
revision	2	Processing version of data	ontime5	19903.883902252	Sum of GTIs [s]
			ontime6	19903.842862248	Sum of GTIs [s]
			ontime7	19903.924942255	Sum of GTIs [s]
			ontime8	19903.760782242	Sum of GTIs [s]
			l1events	995090	Number of level 1 events

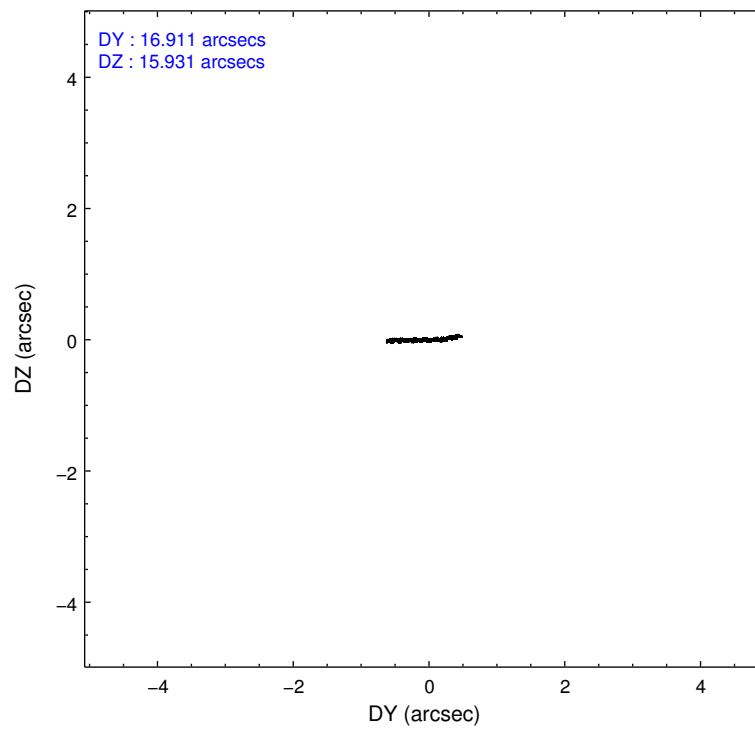
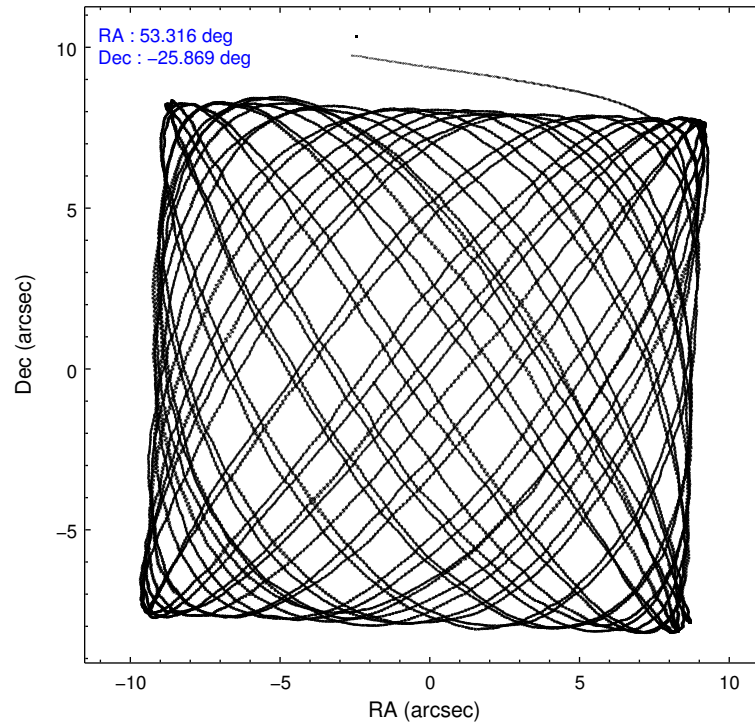
2.1.4 Events

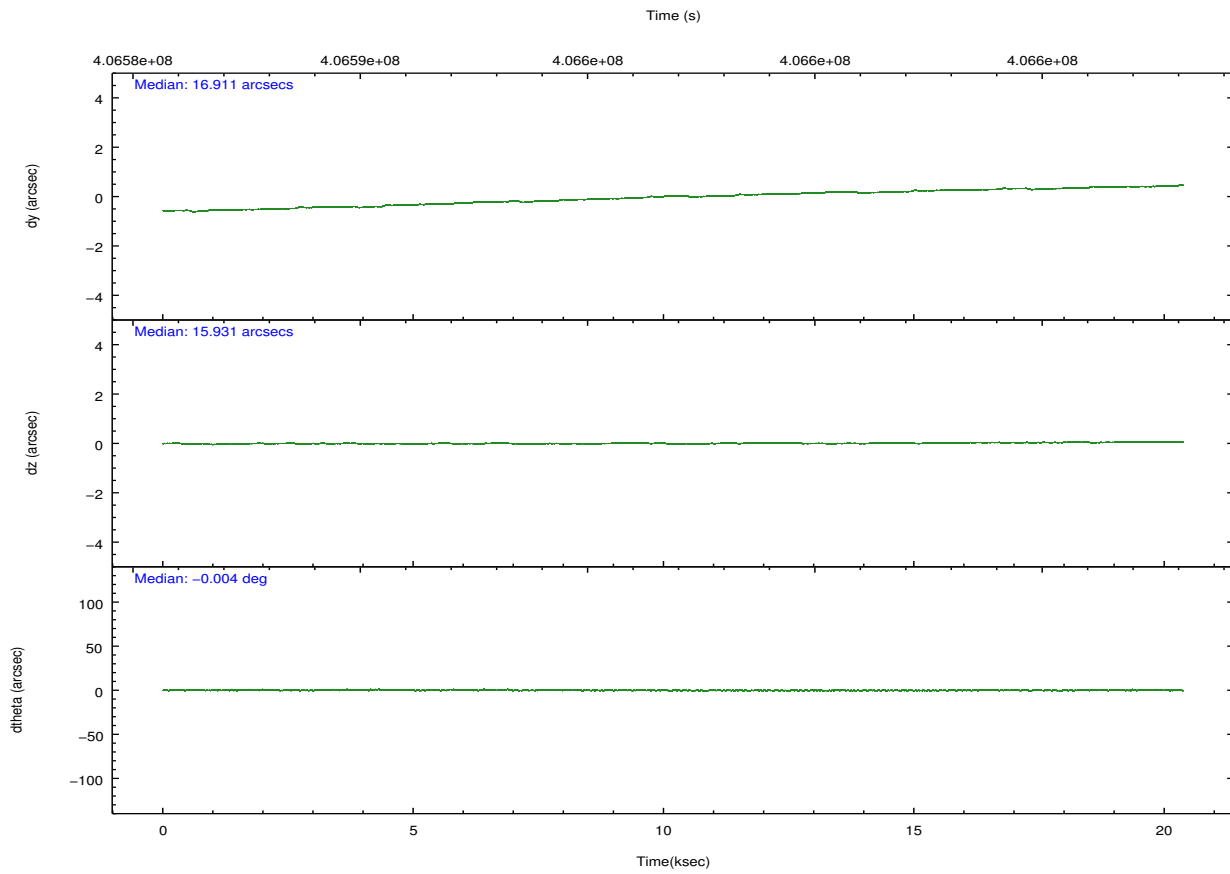
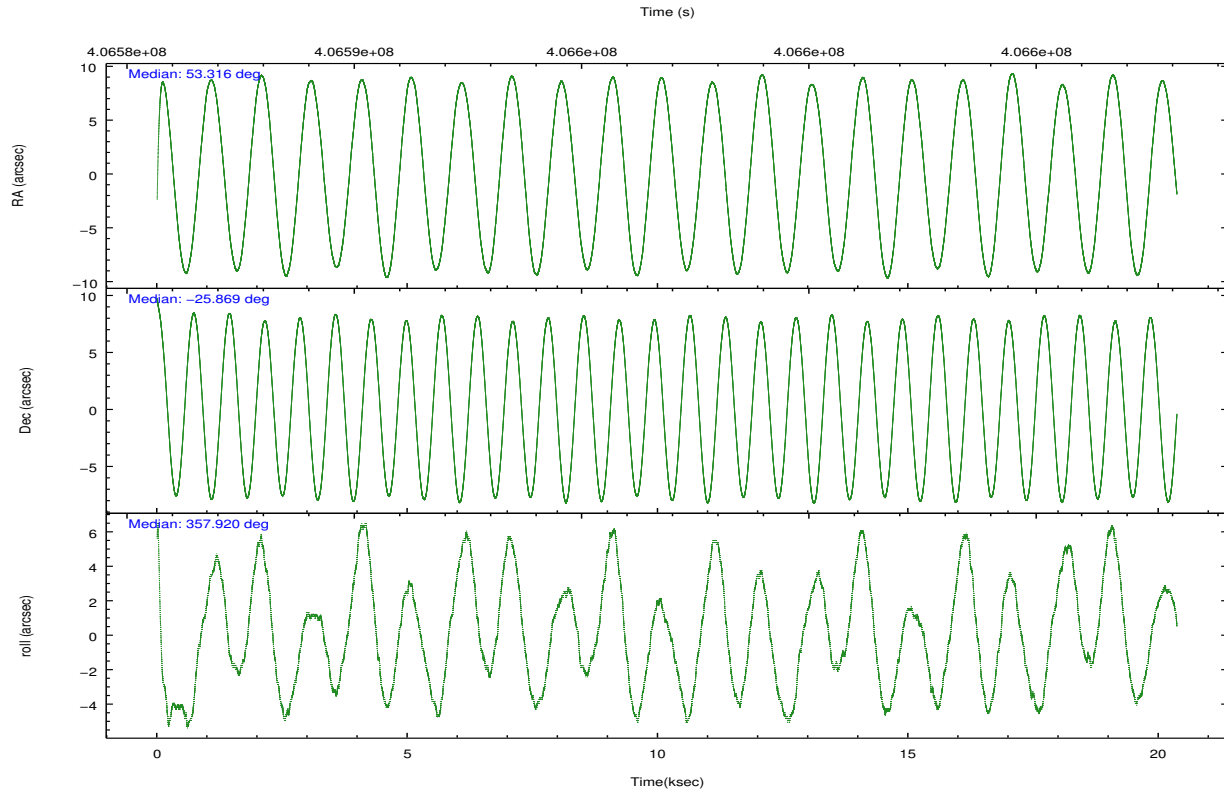
	ccd 2	ccd 3	ccd 5	ccd 6	ccd 7	ccd 8		ccd 2	ccd 3	ccd 5	ccd 6	ccd 7	ccd 8
level 1 events	148754	135142	215742	141099	173469	180884	grade 0 events	5855	5432	8752	5487	7345	13749
rejected events	132814	120454	110469	125207	95492	133257		3%	4%	4%	3%	4%	7%
rejected %	89%	89%	51%	88%	55%	73%	grade 1 events	97	69	386	73	251	143
								0%	0%	0%	0%	0%	0%
							grade 2 events	3849	3229	33251	3563	15952	11352
								2%	2%	15%	2%	9%	6%
							grade 3 events	1616	1571	3857	1664	6877	4980
								1%	1%	1%	1%	3%	2%
							grade 4 events	1638	1535	3793	1711	6814	4711
								1%	1%	1%	1%	3%	2%
							grade 5 events	5758	6410	16375	6495	18264	9462
								3%	4%	7%	4%	10%	5%
							grade 6 events	2988	2932	55653	3474	41017	12845
								2%	2%	25%	2%	23%	7%
							grade 7 events	126953	113964	93675	118632	76949	123642
								85%	84%	43%	84%	44%	68%

2.2 Compared Parameters

Parameter	Planned	Actual	Parameter	Planned	Actual
Instrument	ACIS	ACIS	Obspar format version number	7	7
Detector	ACIS-235678	ACIS-235678	Obspar file type	PREDICTED	ACTUAL
Grating	NONE	NONE	Obspar update status	NONE	UPDATED
Data mode	VFAINT	VFAINT	CCD I0 on	N	N
Observation mode	POINTING	POINTING	CCD I1 on	N	N
[deg] Pointing RA	53.288866	53.31554120197438	CCD I2 on	O4	Y
[deg] Pointing Dec	-25.882405	-25.86927576675127	CCD I3 on	O5	Y
[deg] Pointing Roll	357.759430	357.9277127029567	CCD S0 on	N	N
[mm] SIM focus pos	-0.684267	-0.6828225247311905	CCD S1 on	O3	Y
[mm] SIM defocus	0	0.001444936568705701	CCD S2 on	O1	Y
[mm] SIM translation stage pos	-190.132523	-190.1400660498719	CCD S3 on	Y	Y
[mm] SIM translation stage offset	0	0.00754346686406393	CCD S4 on	O2	Y
[s] Observation start time (MET)	406587062.184000	406585900.14725	CCD S5 on	N	N
Observation start date	2010-11-19T20:49:56	2010-11-19T20:31:40	Number of optional ACIS chips dropped	0	0
[s] Observation end time (MET)	406607062.184000	406607885.37339	On-chip summing requested	N	N
Observation end date	2010-11-20T02:23:16	2010-11-20T02:38:05	Subarray requested	NONE	NONE
Read mode	TIMED	TIMED	Alternating exposures requested	N	N
			[s] Primary exposure time	0.000000	3.2

2.3 Aspect



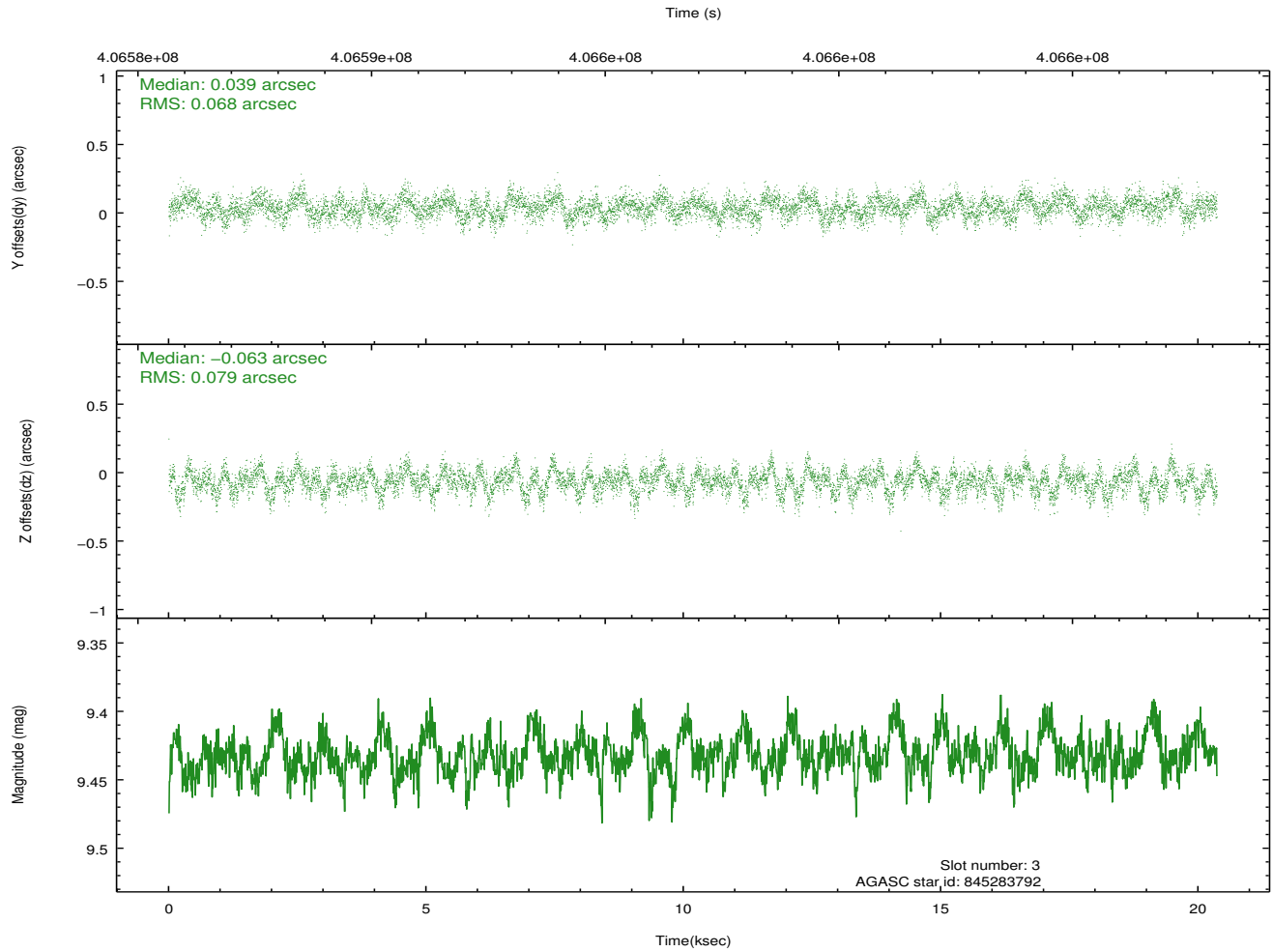
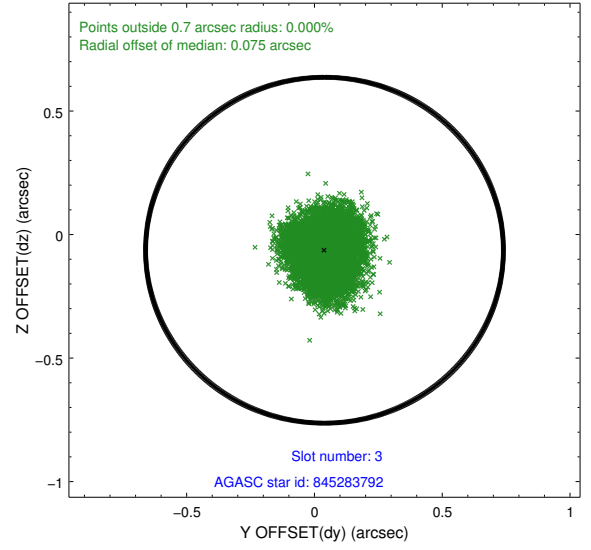
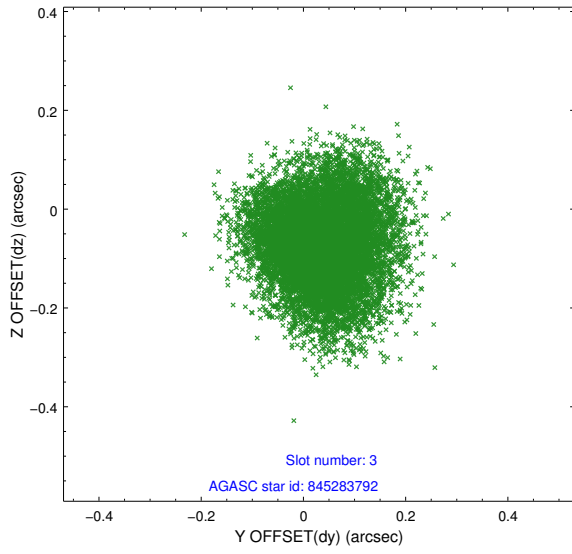


Slot Statistics

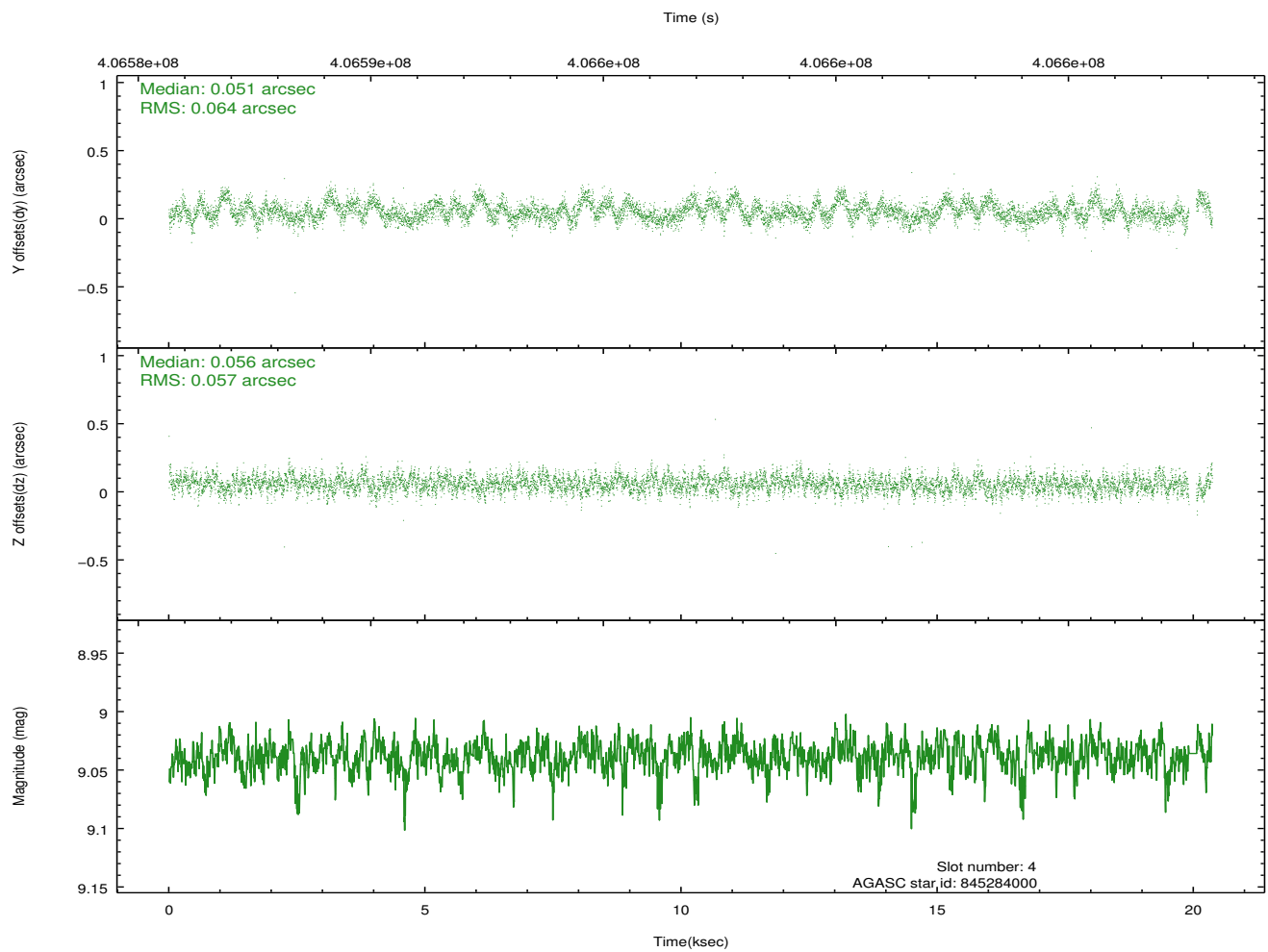
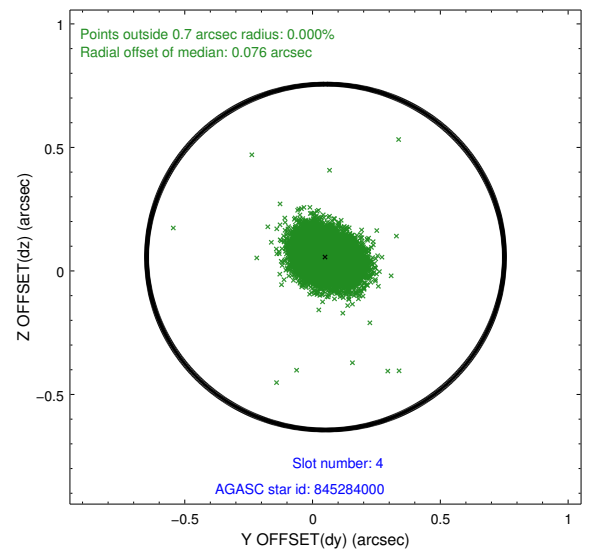
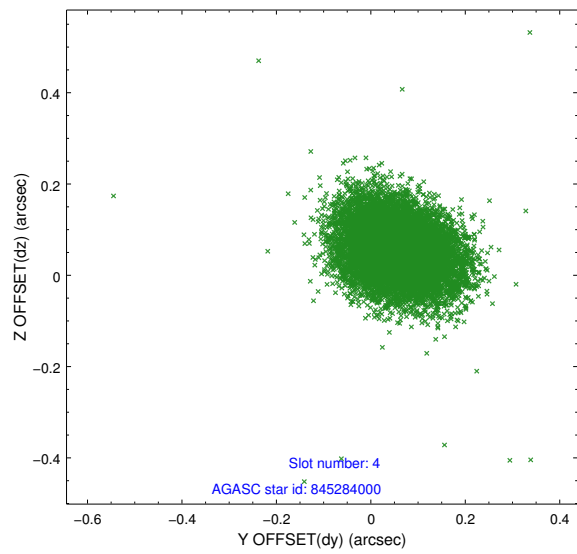
slot	status	id	mag	n_pts	med_dy	med_dz	dr1	dr2	ra	dec	mean_y	mean_z
0	FID	ACIS-S-2	6.96	4968	-0.095	-0.022	0.010	0.016	0.000000	0.000000	-769.96	-1737.37
1	FID	ACIS-S-4	7.04	4968	0.199	0.052	0.008	0.013	0.000000	0.000000	2143.51	171.02
2	FID	ACIS-S-5	7.07	4967	-0.136	-0.022	0.011	0.017	0.000000	0.000000	-1822.63	164.79
3	GUIDE	845283792	9.43	9929	0.039	-0.063	0.112	0.177	52.753310	-25.637819	-1770.83	808.21
4	GUIDE	845284000	9.04	9854	0.051	0.056	0.089	0.148	52.995169	-25.542854	-1001.02	1183.26
5	GUIDE	845293888	6.81	9936	-0.031	-0.067	0.088	0.159	52.973522	-25.614147	-1060.16	923.90
6	GUIDE	845421488	6.20	9936	-0.179	-0.115	0.046	0.075	53.111135	-25.658502	-608.14	782.61
7	GUIDE	845284872	8.56	9935	0.114	0.192	0.092	0.145	52.532199	-26.325582	-2376.63	-1696.51

2.4 Star Slots

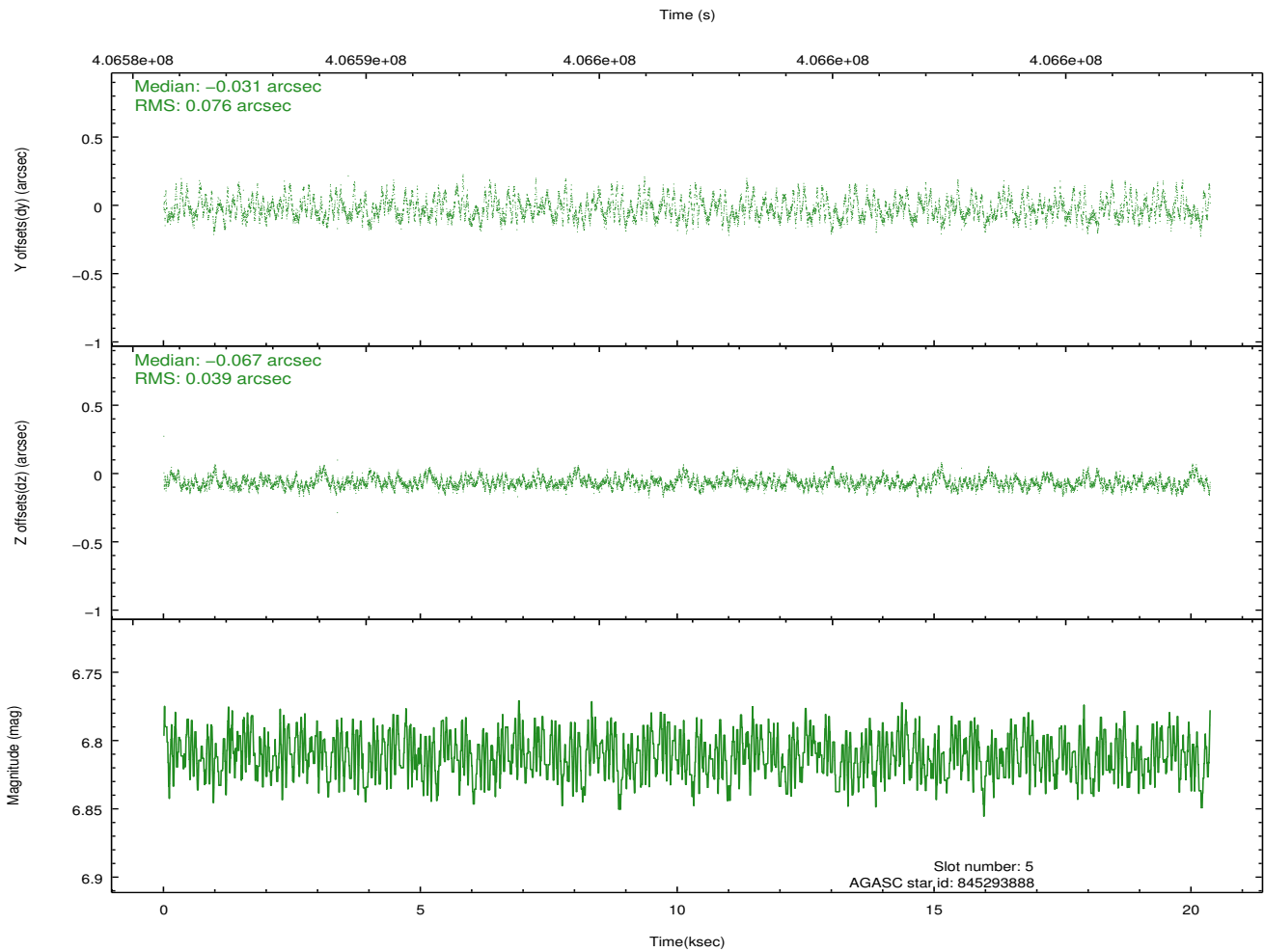
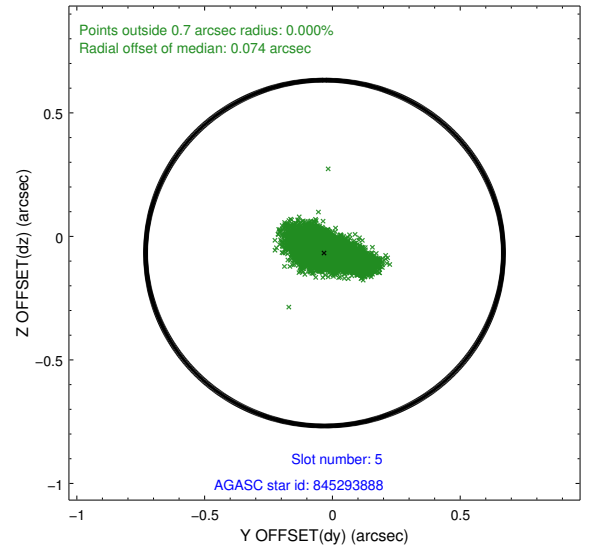
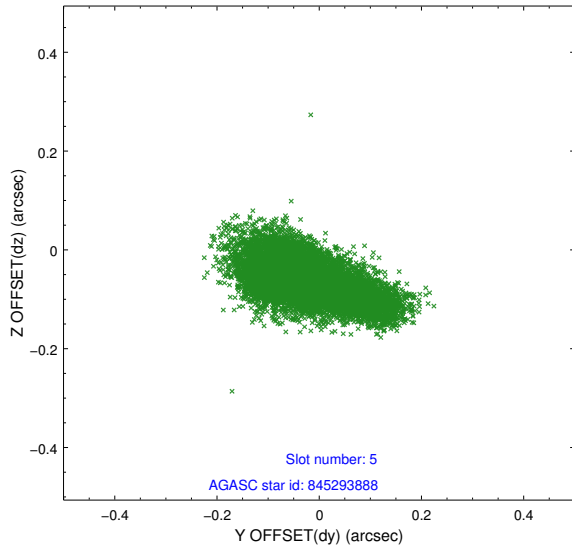
2.4.1 Slot 3



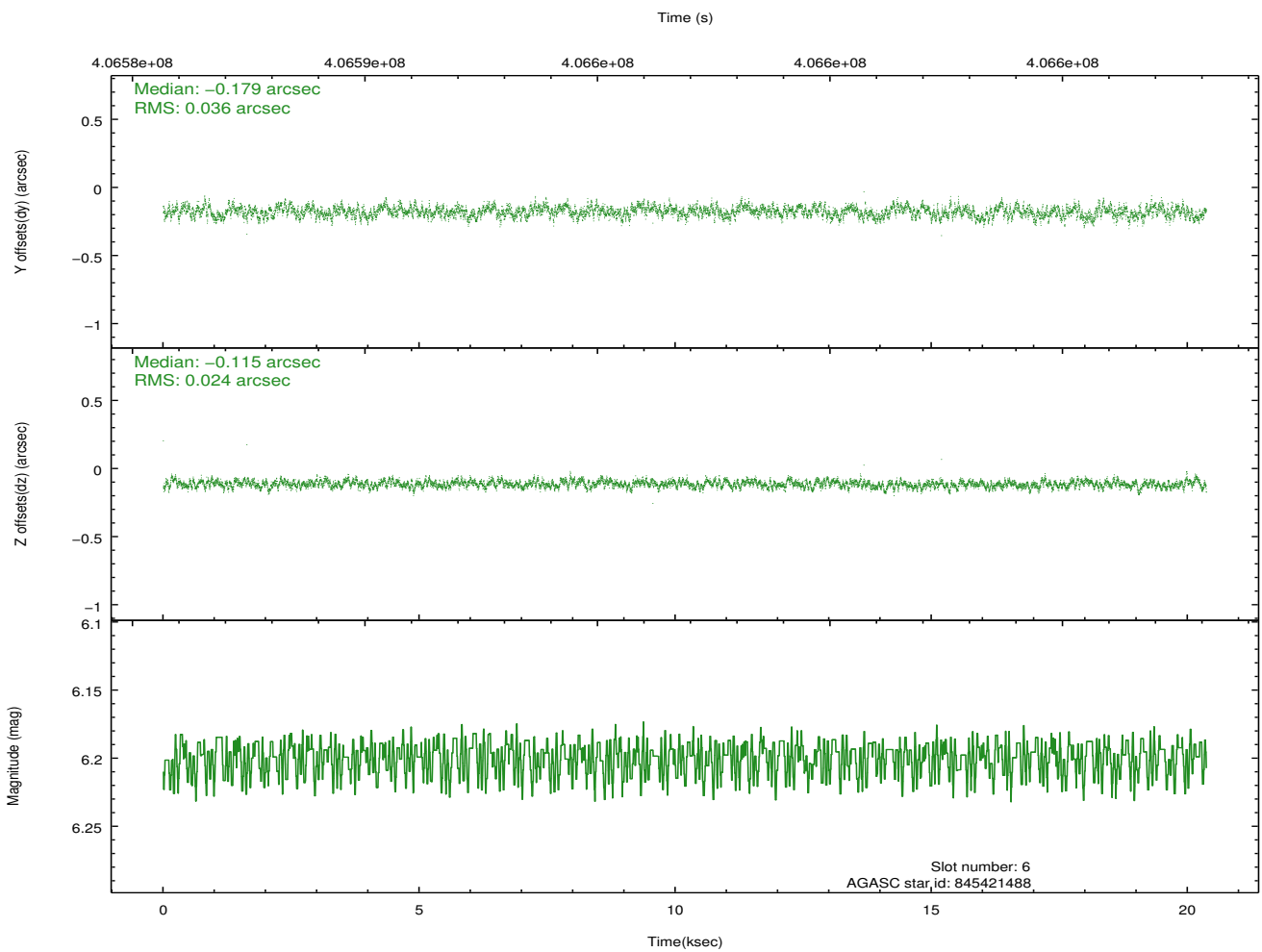
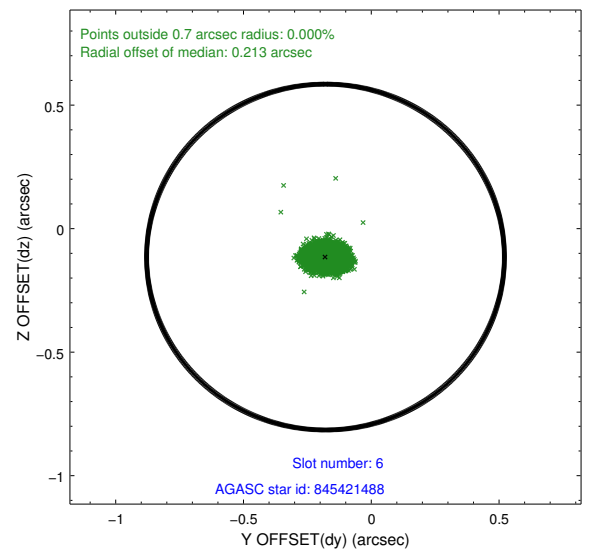
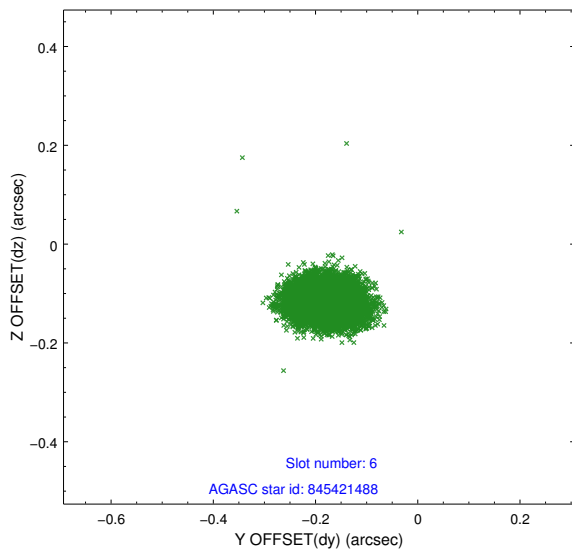
2.4.2 Slot 4



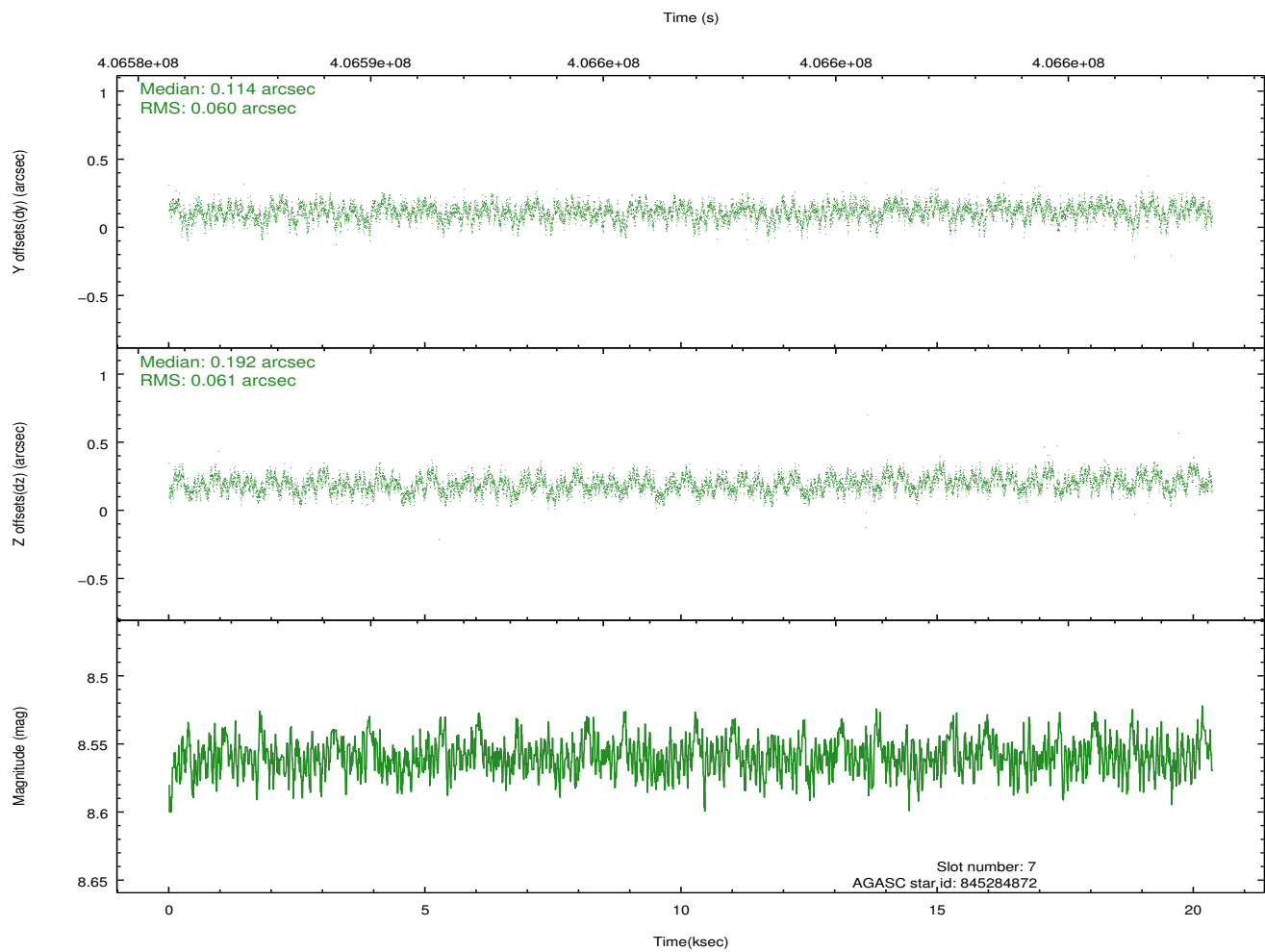
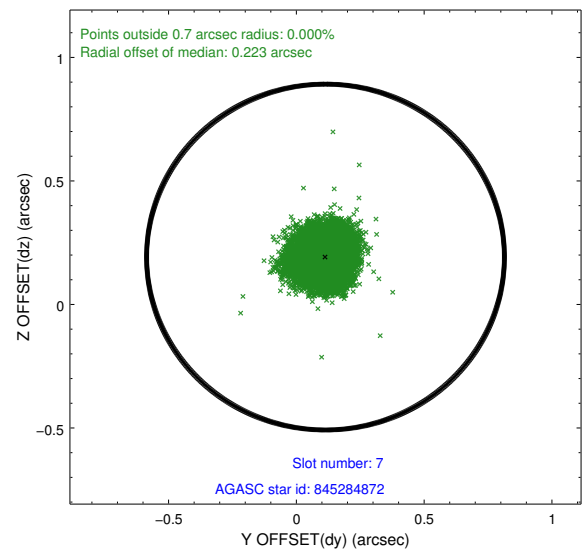
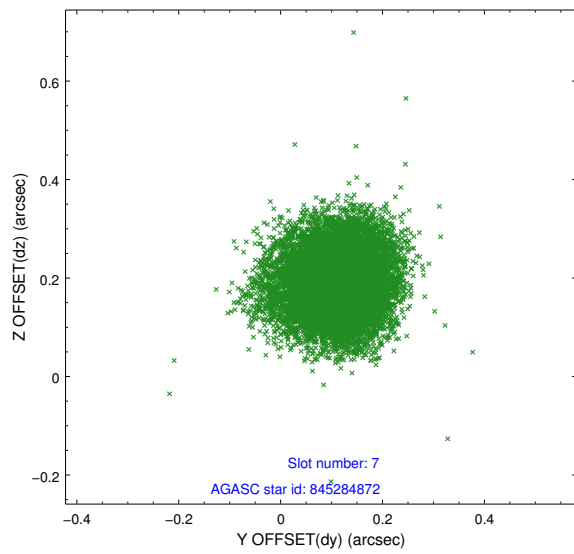
2.4.3 Slot 5



2.4.4 Slot 6

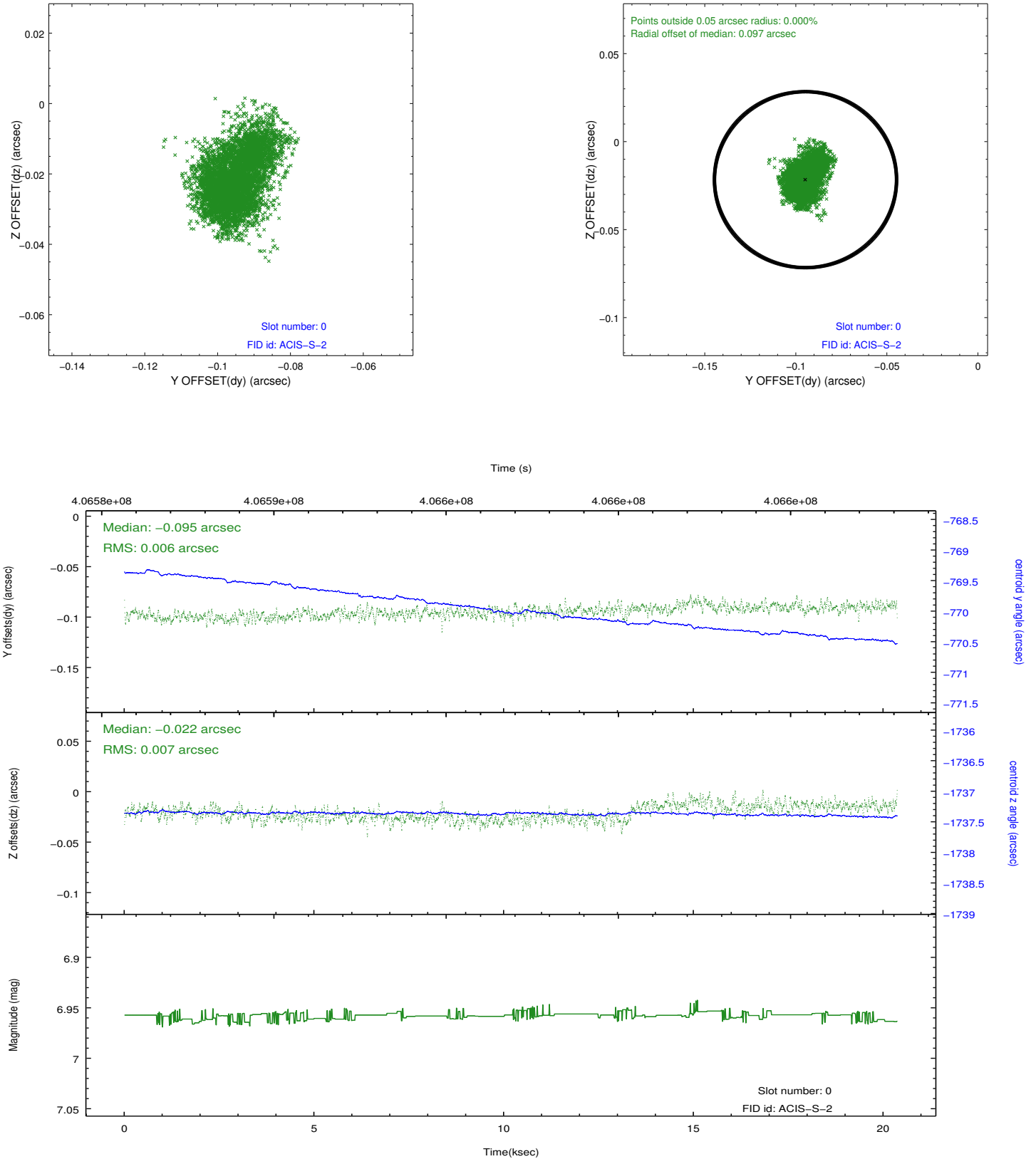


2.4.5 Slot 7

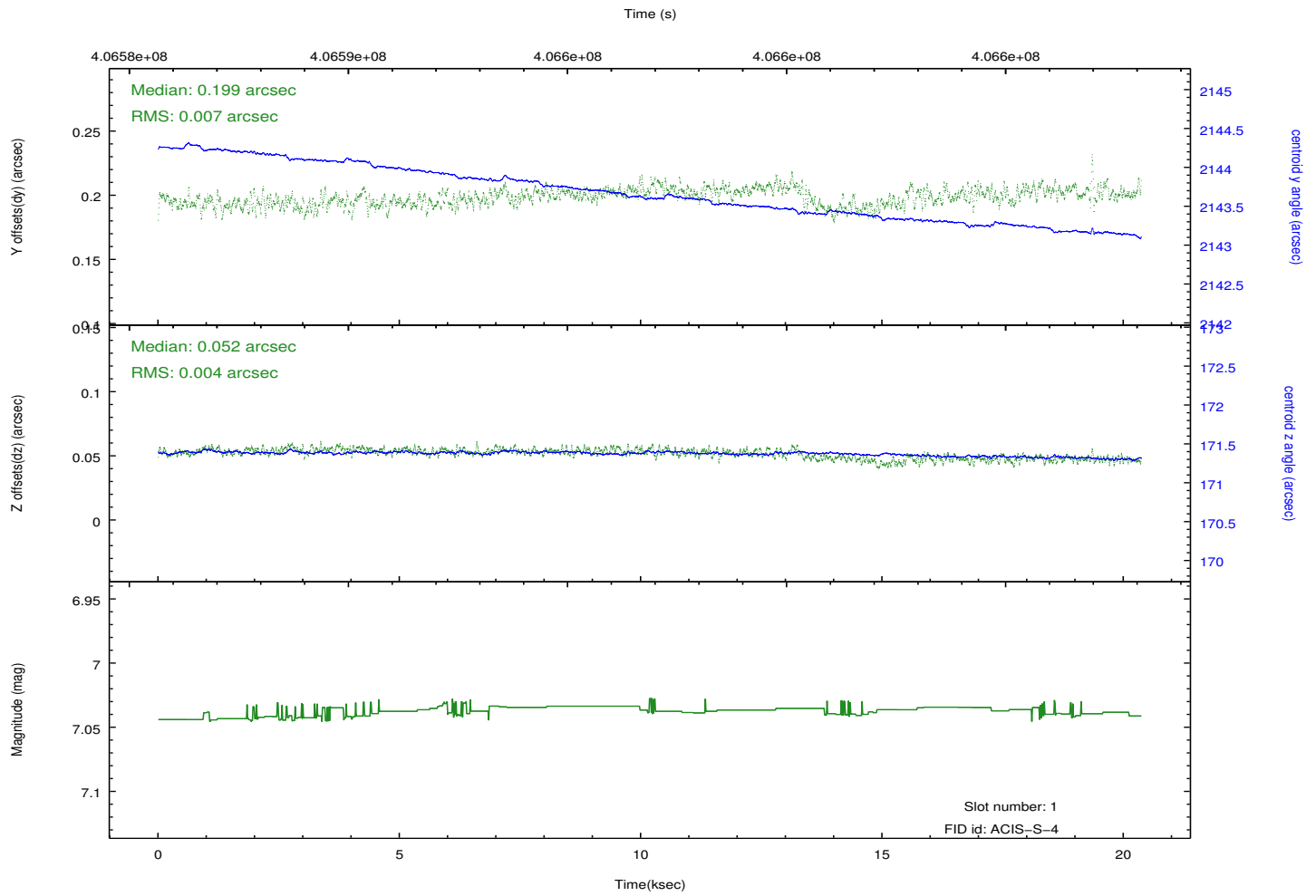
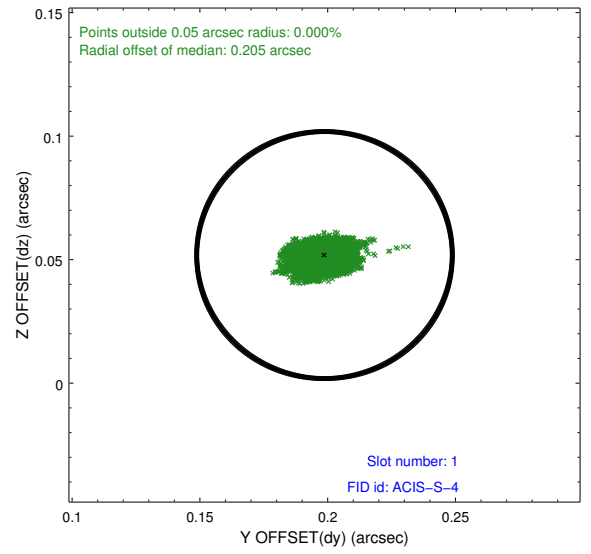
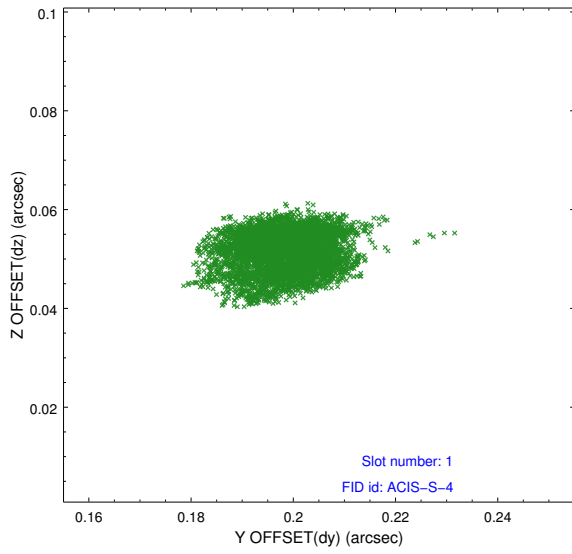


2.5 FID Slots

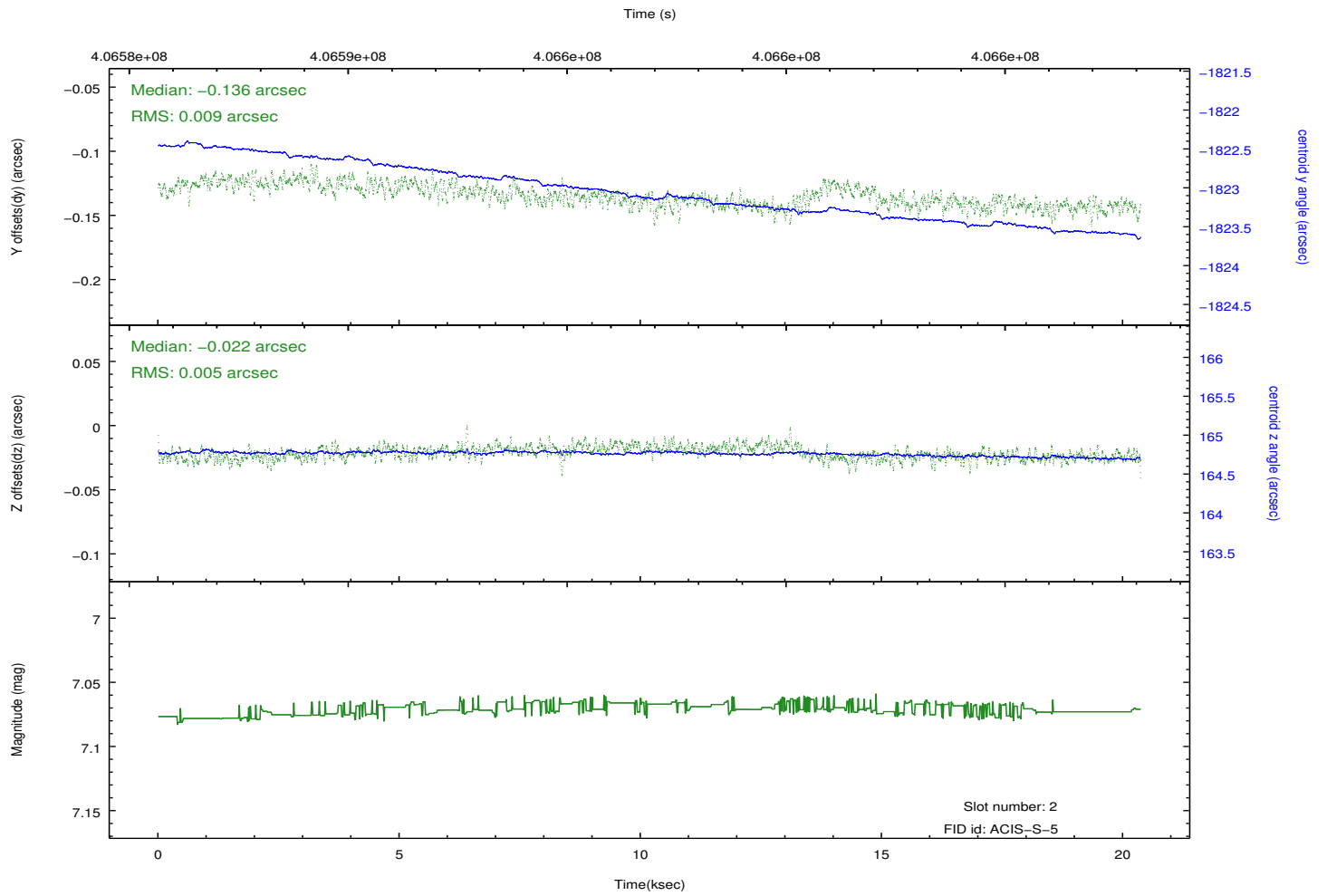
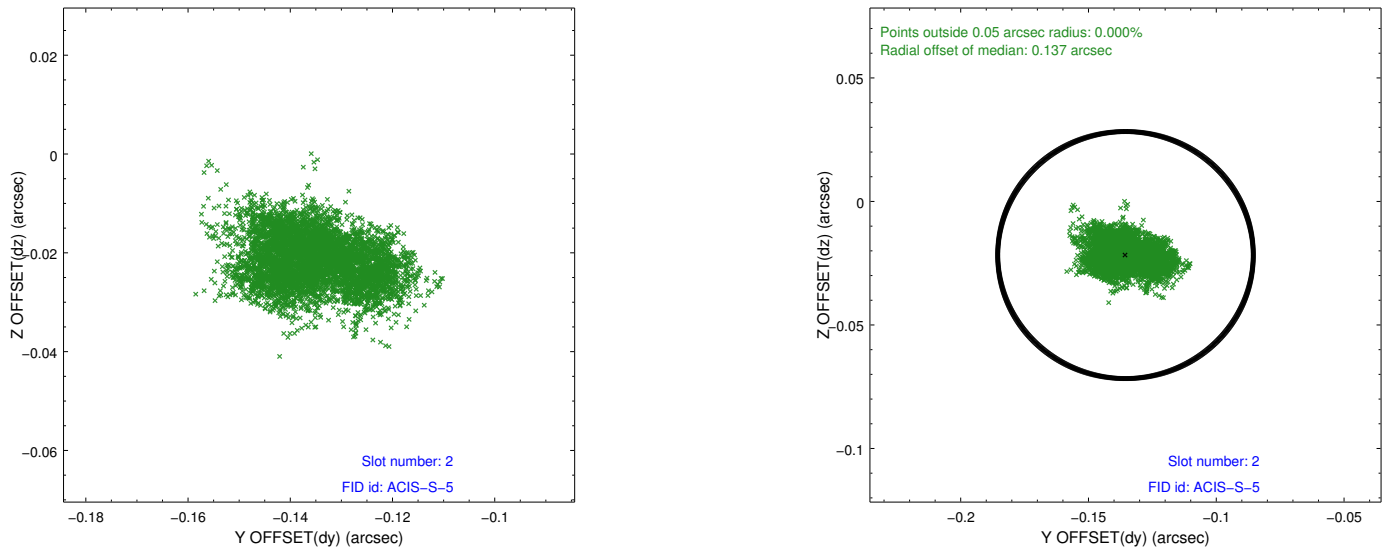
2.5.1 Slot 0



2.5.2 Slot 1



2.5.3 Slot 2



A Summary

A.1 Status

V&V Scientist	Beth Sundheim
V&V Date (YYYY-MM-DD)	2012.07.17
V&V Edition	1
V&V Disposition and Status	OK
V&V Charge Time	19.903924946725

A.2 Comments