

# V&V Reference Report

## L2 ASCDS Version : 8.4.3

Observation 12382 - L2 Version 2  
Chandra X-Ray Center

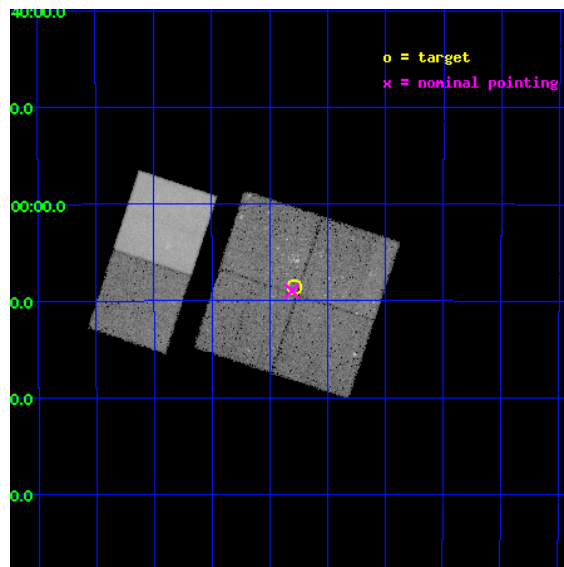
L2 Processing Date : Feb 18 2012

## Contents

<b>1</b>	<b>Front</b>	<b>2</b>
<b>2</b>	<b>OBI</b>	<b>3</b>
2.1	OBI . . . . .	3
2.1.1	Images . . . . .	3
2.1.2	Bias . . . . .	3
2.1.3	Parameters . . . . .	4
2.1.4	Events . . . . .	4
2.2	Compared Parameters . . . . .	5
2.3	Aspect . . . . .	6
2.4	Star Slots . . . . .	9
2.4.1	Slot 3 . . . . .	9
2.4.2	Slot 4 . . . . .	10
2.4.3	Slot 5 . . . . .	11
2.4.4	Slot 6 . . . . .	12
2.4.5	Slot 7 . . . . .	13
2.5	FID Slots . . . . .	14
2.5.1	Slot 0 . . . . .	14
2.5.2	Slot 1 . . . . .	15
2.5.3	Slot 2 . . . . .	16
<b>A</b>	<b>Summary</b>	<b>17</b>
A.1	Status . . . . .	17
A.2	Comments . . . . .	17

# 1 Front

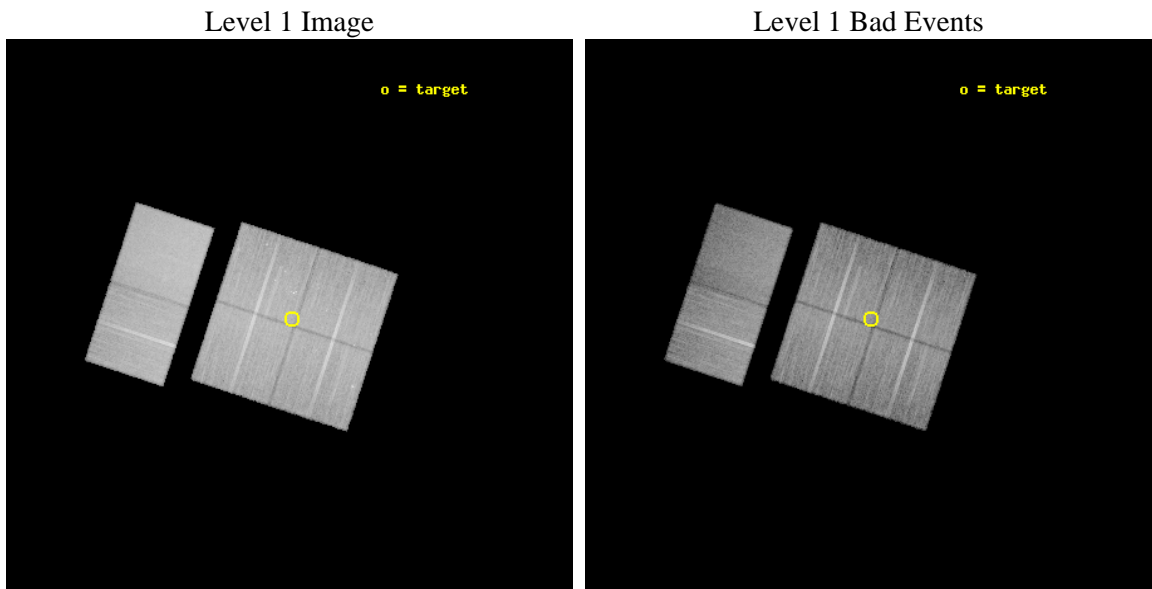
seq_num	200716	Sequence number
obs_id	12382	Observation id
title	The Cat's Other Paw: Star Formation in a Frothy Bottom	Proposal t
observer	Dr. Scott Wolk	Principal investigator
object	NGC 6334	Source name
dtycycle	0	&#160
cycle	P	events from which exps? Prim/Second/Both
ra_targ	259.94625	Observer's specified target RA [deg]
dec_targ	-36.143056	Observer's specified target Dec [deg]
ra_nom	259.95204435101	Nominal RA [deg]
dec_nom	-36.149624586857	Nominal Dec [deg]
roll_nom	288.21210800134	Nominal Roll [deg]
revision	2	Processing version of data
ontime	32449.564276457	Sum of GTIs [s]
livetime	32038.668354807	Livetime [s]
ontime0	32452.682216644	Sum of GTIs [s]
ontime1	32455.96430701	Sum of GTIs [s]
ontime2	32456.005347013	Sum of GTIs [s]
ontime3	32449.564276457	Sum of GTIs [s]
ontime6	32452.88741678	Sum of GTIs [s]
ontime7	32456.08742702	Sum of GTIs [s]
l2events	221899	Number of level 2 events



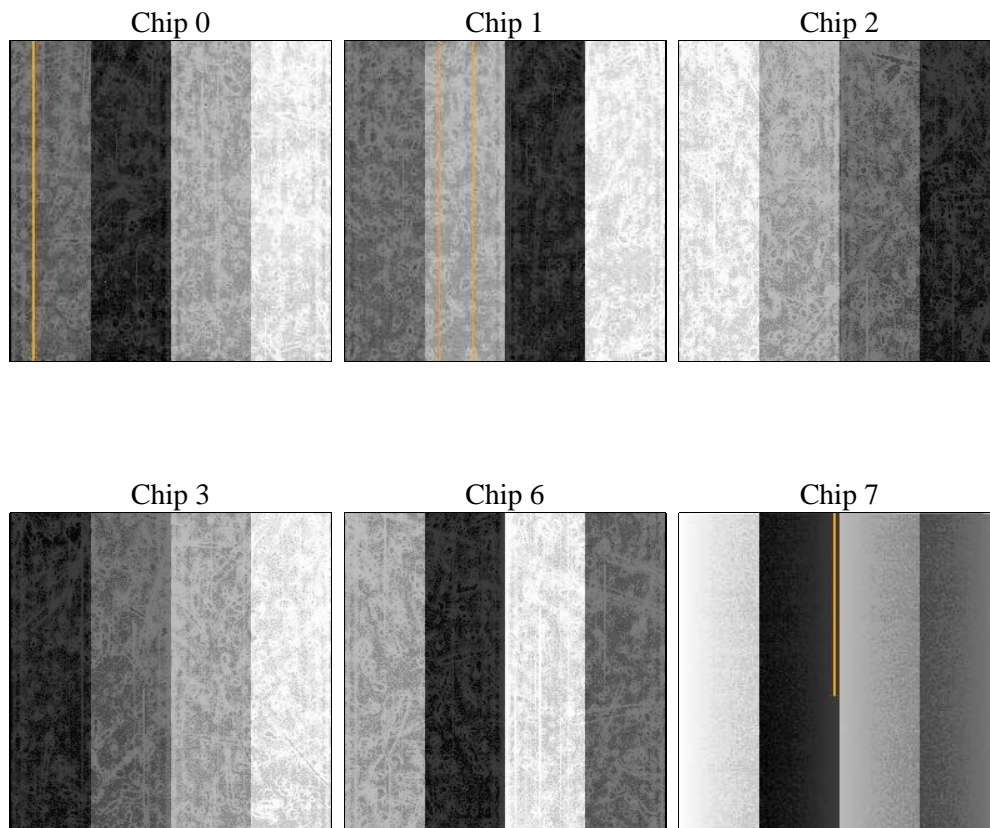
## 2 OBI

### 2.1 OBI

#### 2.1.1 Images



#### 2.1.2 Bias



### 2.1.3 Parameters

obi_num	0	Obi number	sched_exp_time	32400.000000	[s] Scheduled observation exposure time
ascdsver	8.4.3	Processing system revision	ontime	32449.564276457	Sum of GTIs [s]
caldbver	4.4.8	&#160	ontime0	32452.682216644	Sum of GTIs [s]
date	2012-02-18T05:26:31	Date and time of file creation	ontime1	32455.96430701	Sum of GTIs [s]
revision	2	Processing version of data	ontime2	32456.005347013	Sum of GTIs [s]
			ontime3	32449.564276457	Sum of GTIs [s]
			ontime6	32452.88741678	Sum of GTIs [s]
			ontime7	32456.08742702	Sum of GTIs [s]
			l1events	1258523	Number of level 1 events

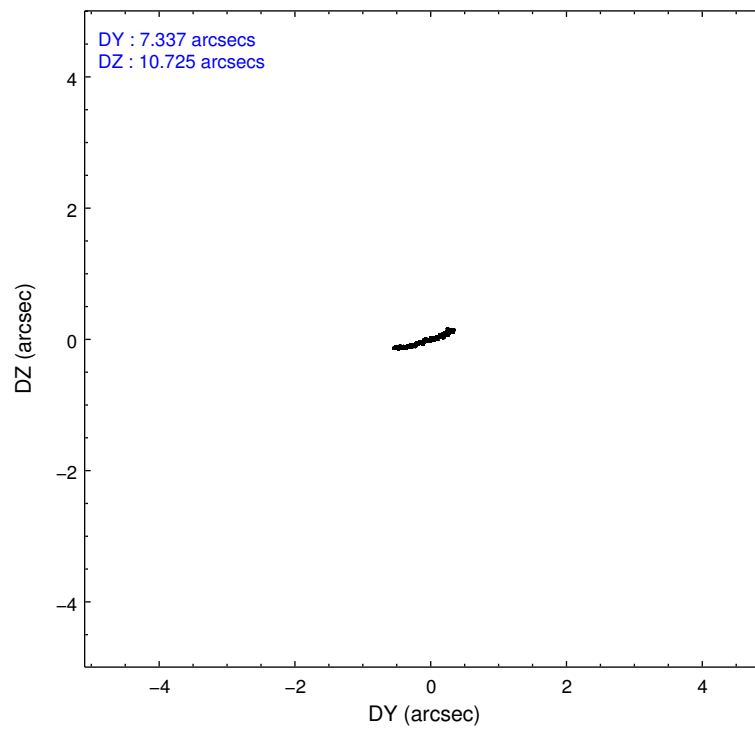
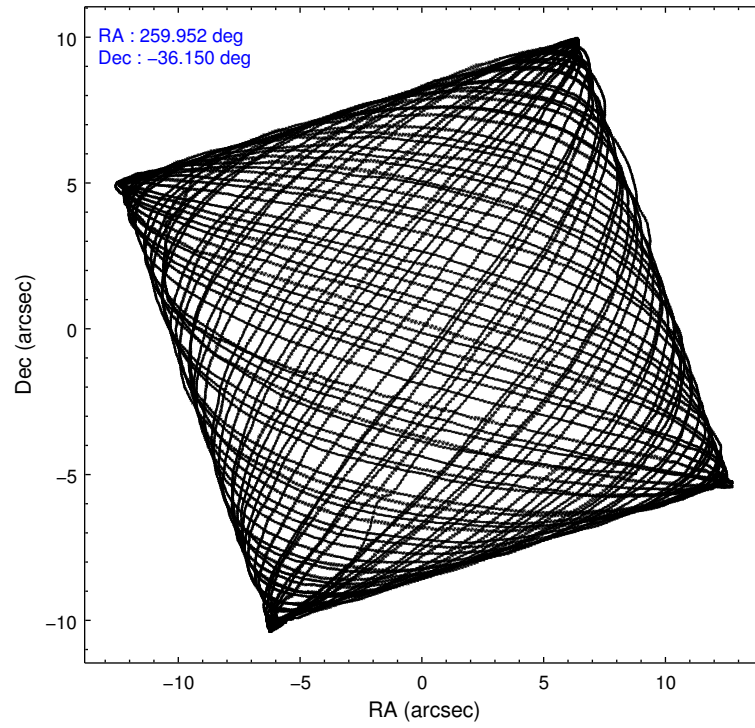
### 2.1.4 Events

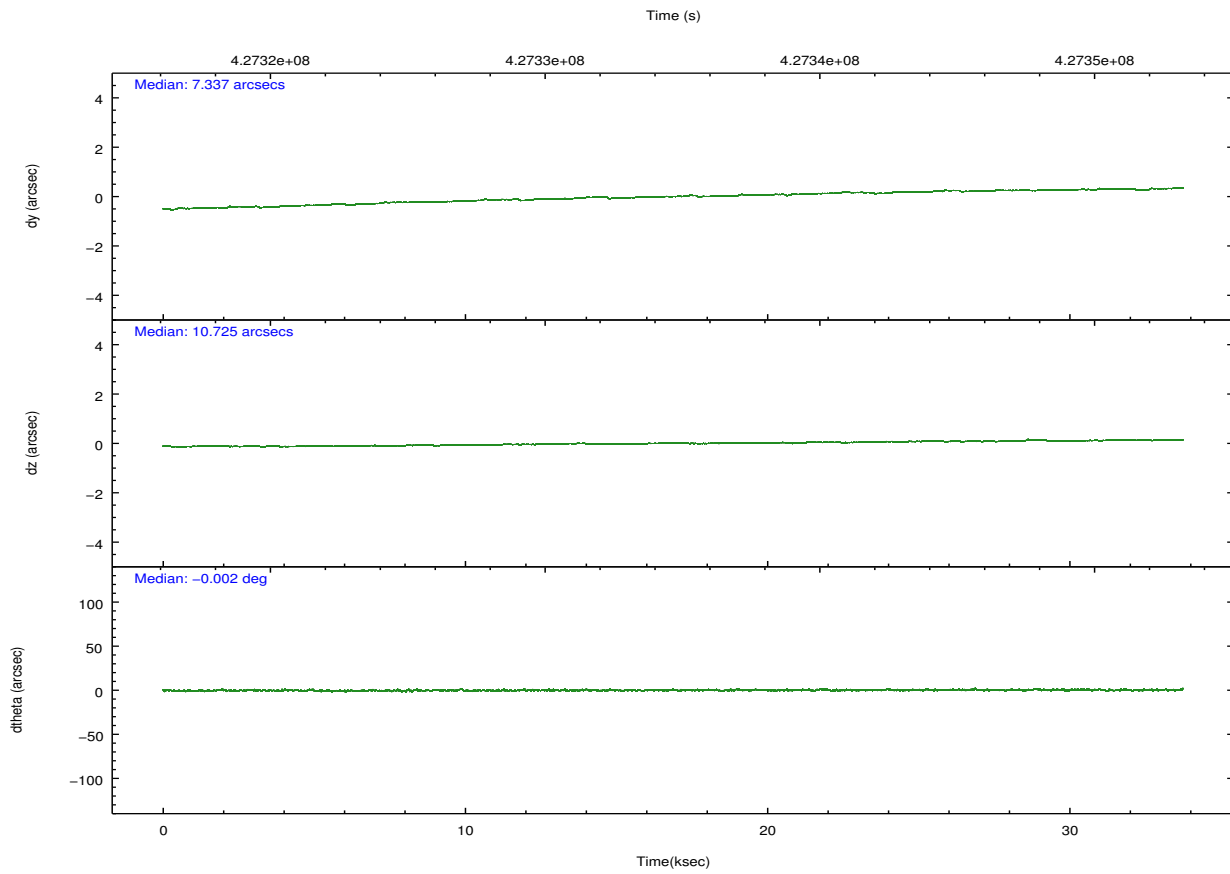
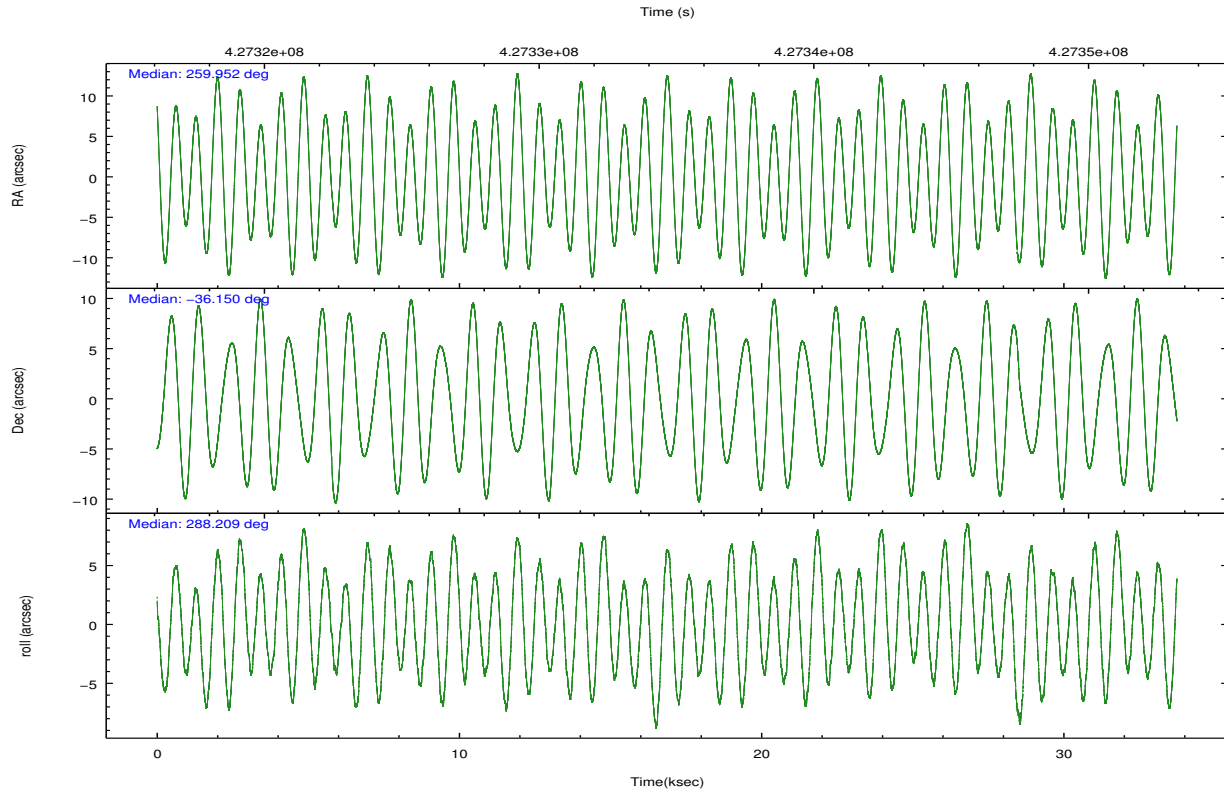
	ccd 0	ccd 1	ccd 2	ccd 3	ccd 6	ccd 7		ccd 0	ccd 1	ccd 2	ccd 3	ccd 6	ccd 7
level 1 events	183656	191052	205114	202129	215407	261165	grade 0 events	9359	11124	8931	11729	8864	10611
rejected events	159354	163275	181745	175553	190696	144766		5%	5%	4%	5%	4%	4%
rejected %	86%	85%	88%	86%	88%	55%	grade 1 events	116	108	130	145	113	302
								0%	0%	0%	0%	0%	0%
							grade 2 events	5576	6009	5434	5179	5518	23934
								3%	3%	2%	2%	2%	9%
							grade 3 events	2484	2612	2294	2508	2506	10057
								1%	1%	1%	1%	1%	3%
							grade 4 events	2360	2554	2415	2487	2509	10000
								1%	1%	1%	1%	1%	3%
							grade 5 events	8682	9171	8131	9858	10092	26620
								4%	4%	3%	4%	4%	10%
							grade 6 events	4527	5481	4299	4675	5318	61817
								2%	2%	2%	2%	2%	23%
							grade 7 events	150552	153993	173480	165548	180487	117824
								81%	80%	84%	81%	83%	45%

## 2.2 Compared Parameters

Parameter	Planned	Actual	Parameter	Planned	Actual
Instrument	ACIS	ACIS	Obspar format version number	7	7
Detector	ACIS-012367	ACIS-012367	Obspar file type	PREDICTED	ACTUAL
Grating	NONE	NONE	Obspar update status	NONE	UPDATED
Data mode	VFAINT	VFAINT	CCD I0 on	Y	Y
Observation mode	POINTING	POINTING	CCD I1 on	Y	Y
[deg] Pointing RA	259.926583	259.9520443510053	CCD I2 on	Y	Y
[deg] Pointing Dec	-36.131391	-36.14962458685739	CCD I3 on	Y	Y
[deg] Pointing Roll	287.988404	288.2121080013353	CCD S0 on	N	N
[mm] SIM focus pos	-0.782348	-0.7809083437167272	CCD S1 on	N	N
[mm] SIM defocus	0	0.001439871863259334	CCD S2 on	O2	Y
[mm] SIM translation stage pos	-233.592463	-233.5874344608287	CCD S3 on	O1	Y
[mm] SIM translation stage offset	0	-0.005018542100998502	CCD S4 on	N	N
[s] Observation start time (MET)	427319131.184000	427317543.16197	CCD S5 on	N	N
Observation start date	2011-07-17T19:44:25	2011-07-17T19:19:03	Number of optional ACIS chips dropped	0	0
[s] Observation end time (MET)	427351531.184000	427351958.56377	On-chip summing requested	N	N
Observation end date	2011-07-18T04:44:25	2011-07-18T04:52:38	Subarray requested	NONE	NONE
Read mode	TIMED	TIMED	Alternating exposures requested	N	N
			[s] Primary exposure time	0.000000	3.2

## 2.3 Aspect



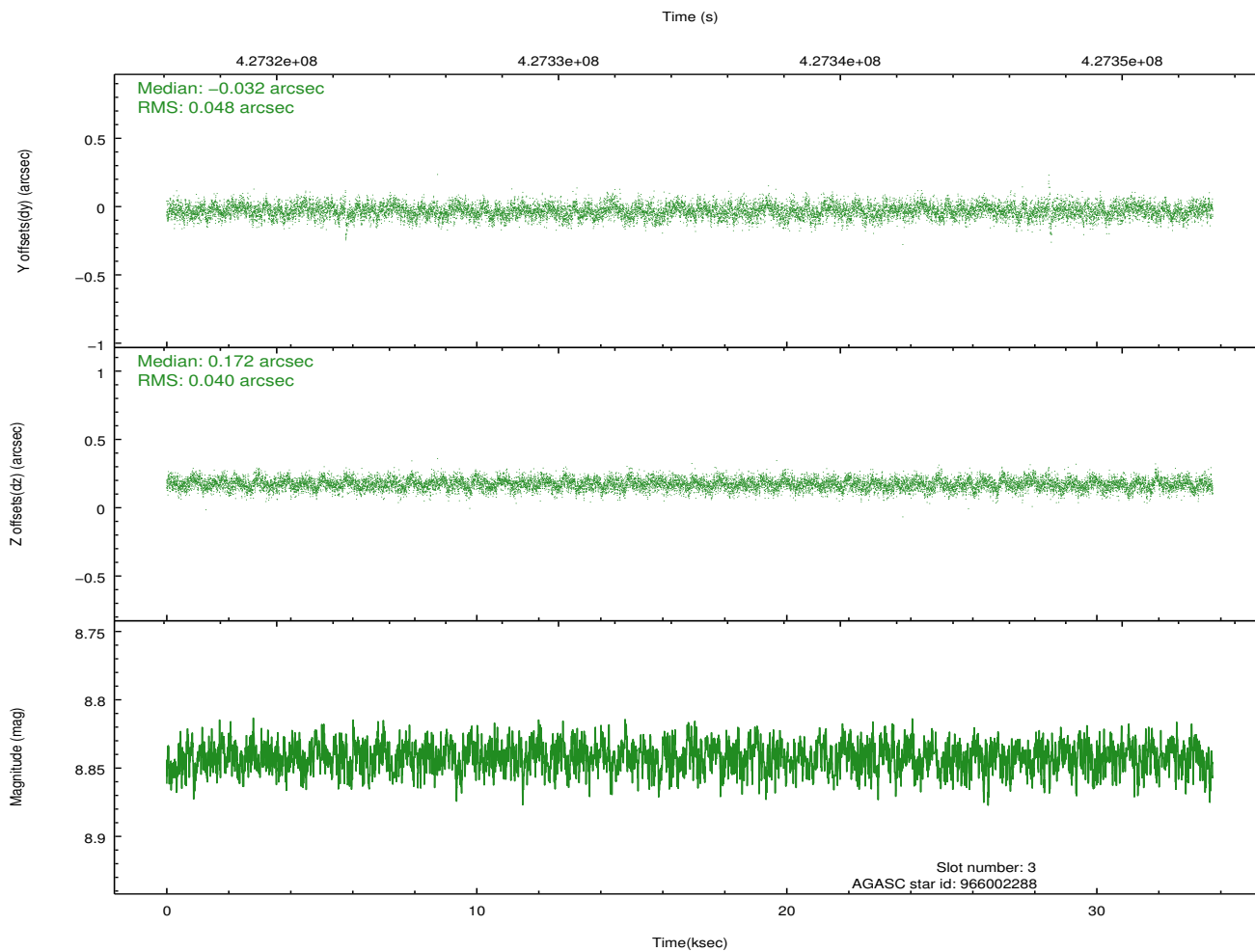
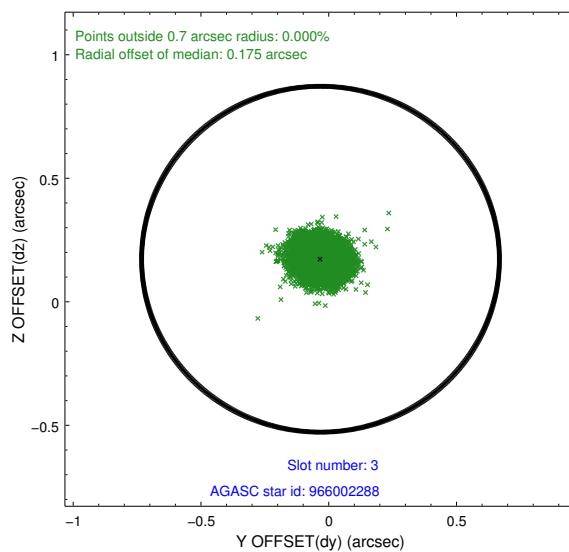
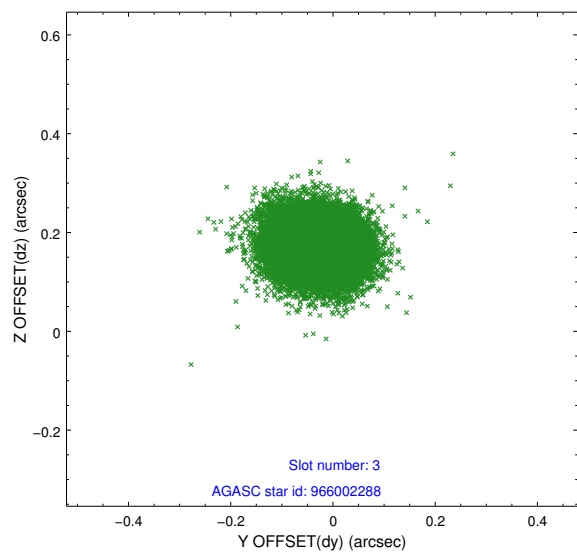


### Slot Statistics

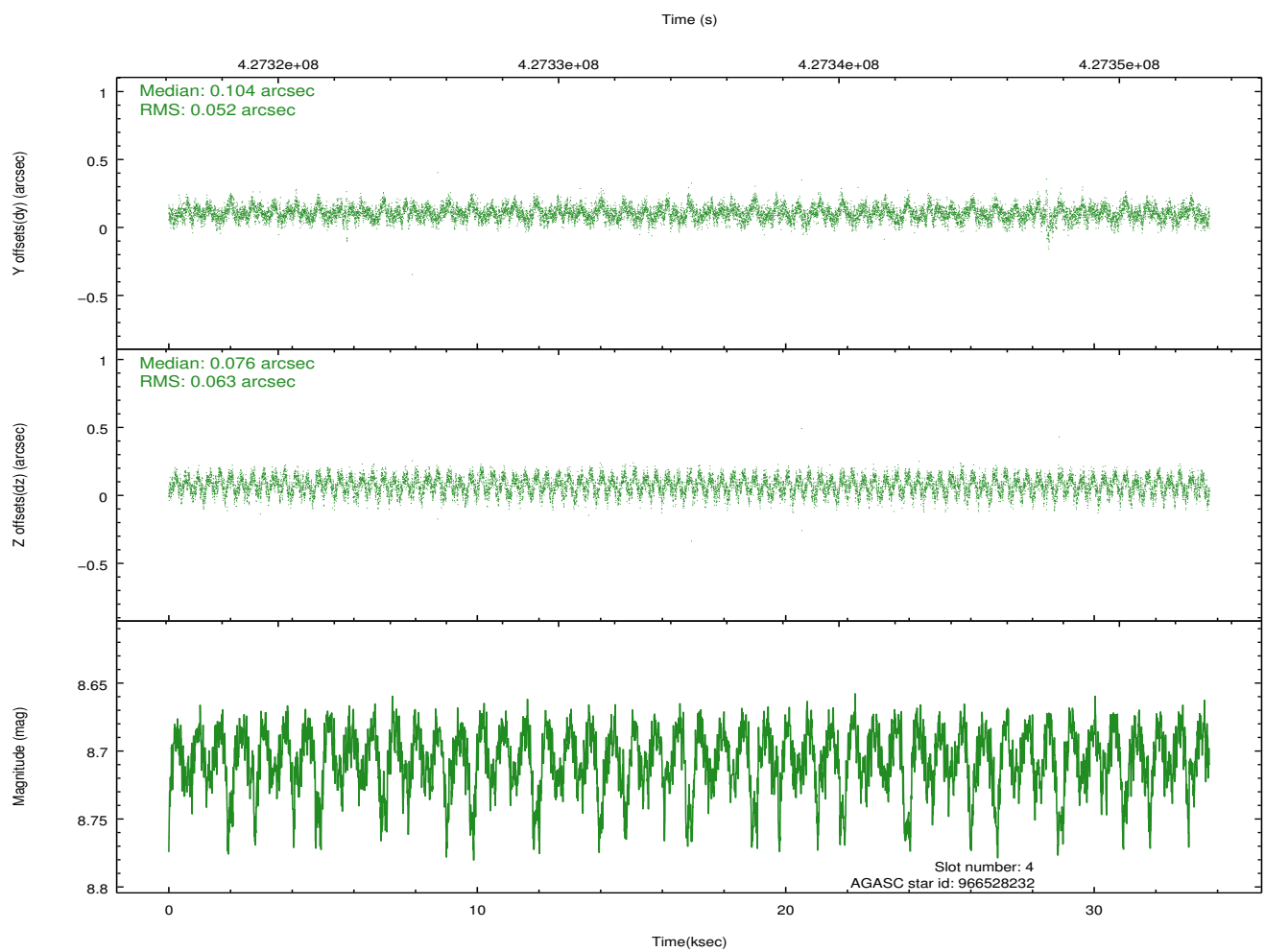
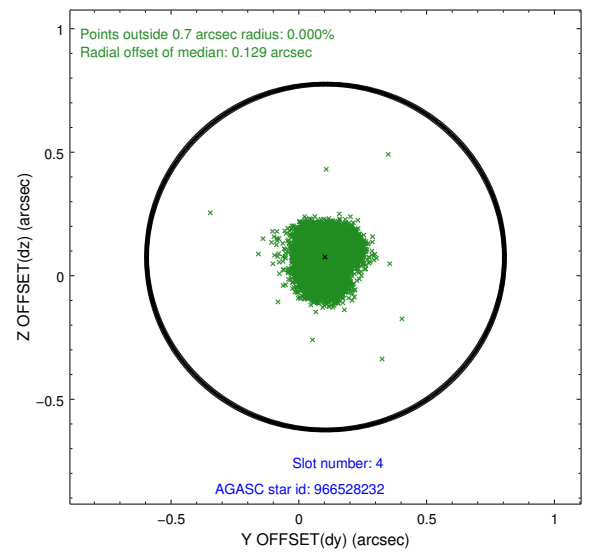
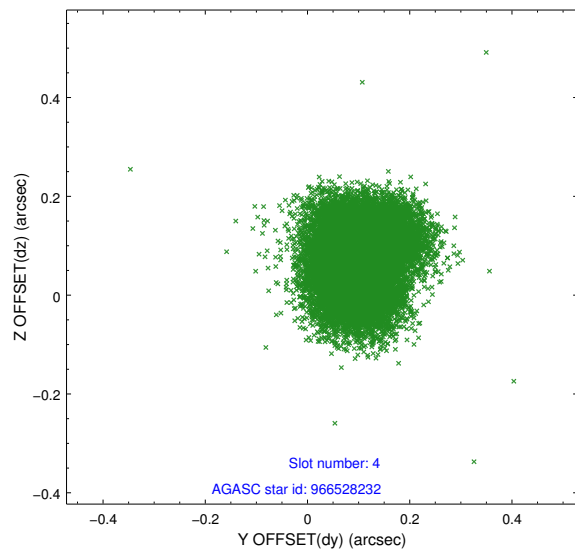
slot	status	id	mag	n_pts	med_dy	med_dz	dr1	dr2	ra	dec	mean_y	mean_z
0	FID	ACIS-I-1	7.14	8230	0.036	-0.032	0.011	0.020	0.000000	0.000000	932.40	-834.25
1	FID	ACIS-I-4	7.06	8230	0.161	0.029	0.017	0.032	0.000000	0.000000	2152.60	1065.58
2	FID	ACIS-I-5	7.12	8230	-0.294	0.074	0.017	0.028	0.000000	0.000000	-1815.86	1063.56
3	GUIDE	966002288	8.84	16455	-0.032	0.172	0.067	0.108	259.614800	-35.563330	-2225.41	-237.12
4	GUIDE	966528232	8.70	16453	0.104	0.076	0.088	0.137	259.270821	-36.205055	-329.61	-1895.45
5	GUIDE	966530176	8.77	16451	0.270	-0.287	0.080	0.129	260.167913	-36.682742	2104.35	49.31
6	GUIDE	966005056	8.24	16452	-0.407	0.022	0.076	0.134	260.445624	-35.348497	-2205.92	2318.64
7	GUIDE	966530544	8.74	16447	0.067	0.020	0.072	0.117	260.631187	-36.513761	1946.17	1511.97

## 2.4 Star Slots

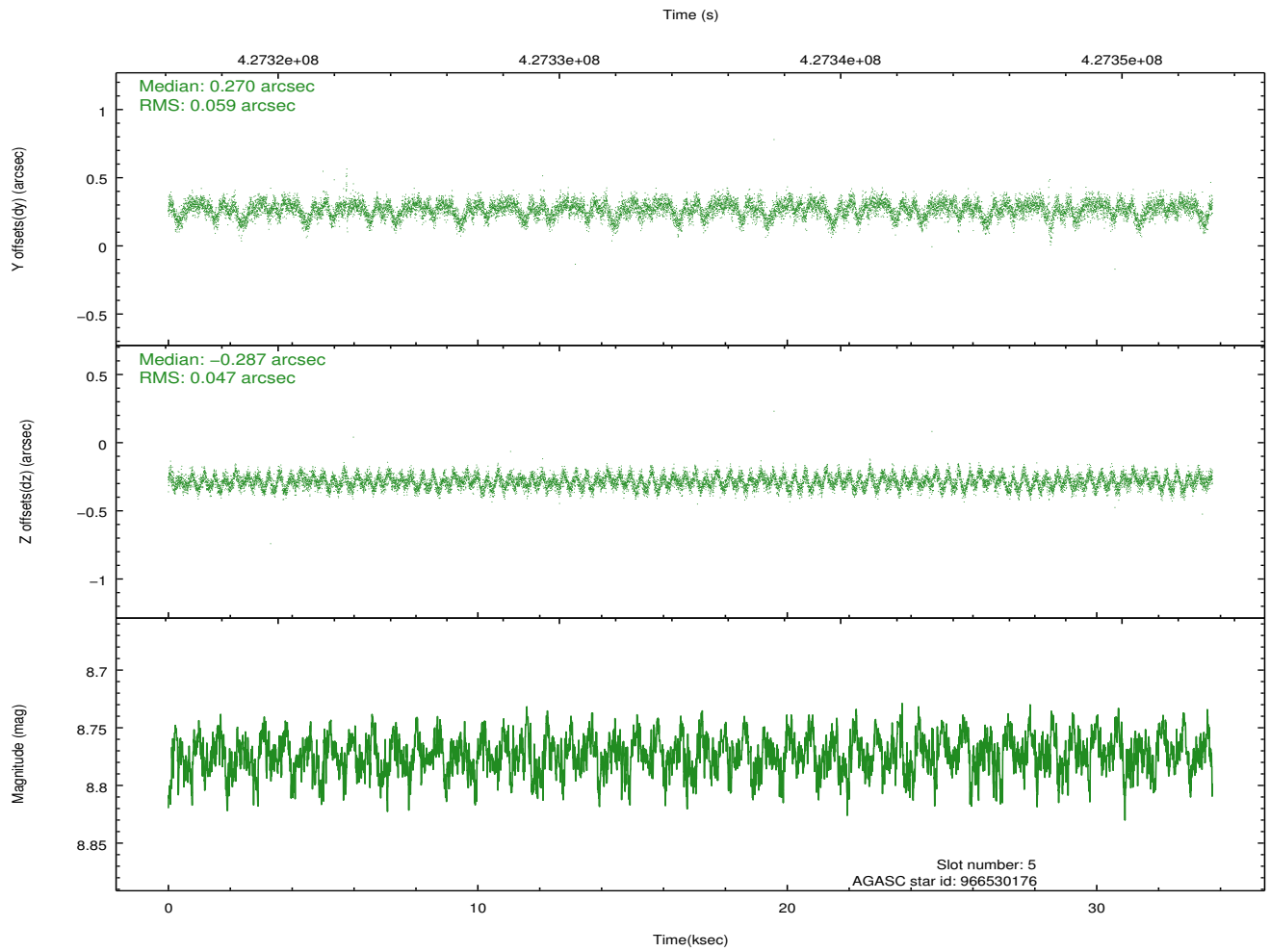
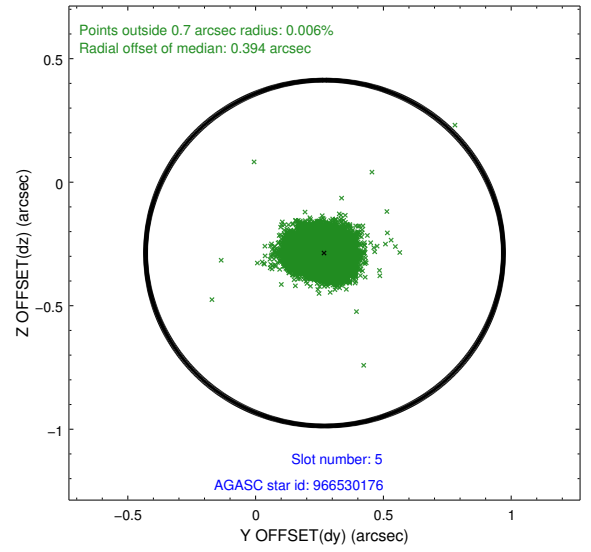
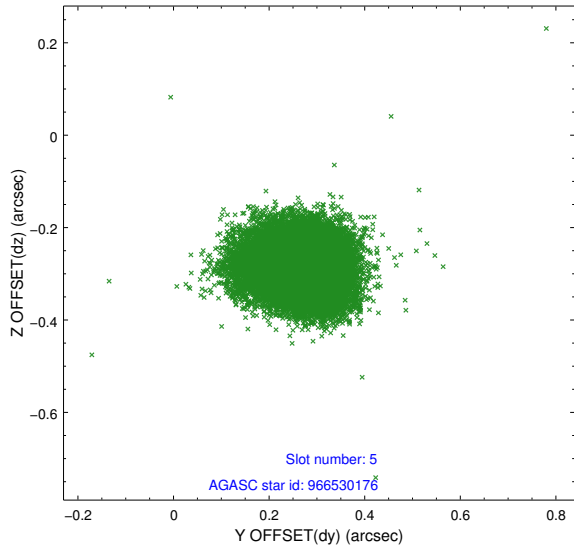
### 2.4.1 Slot 3



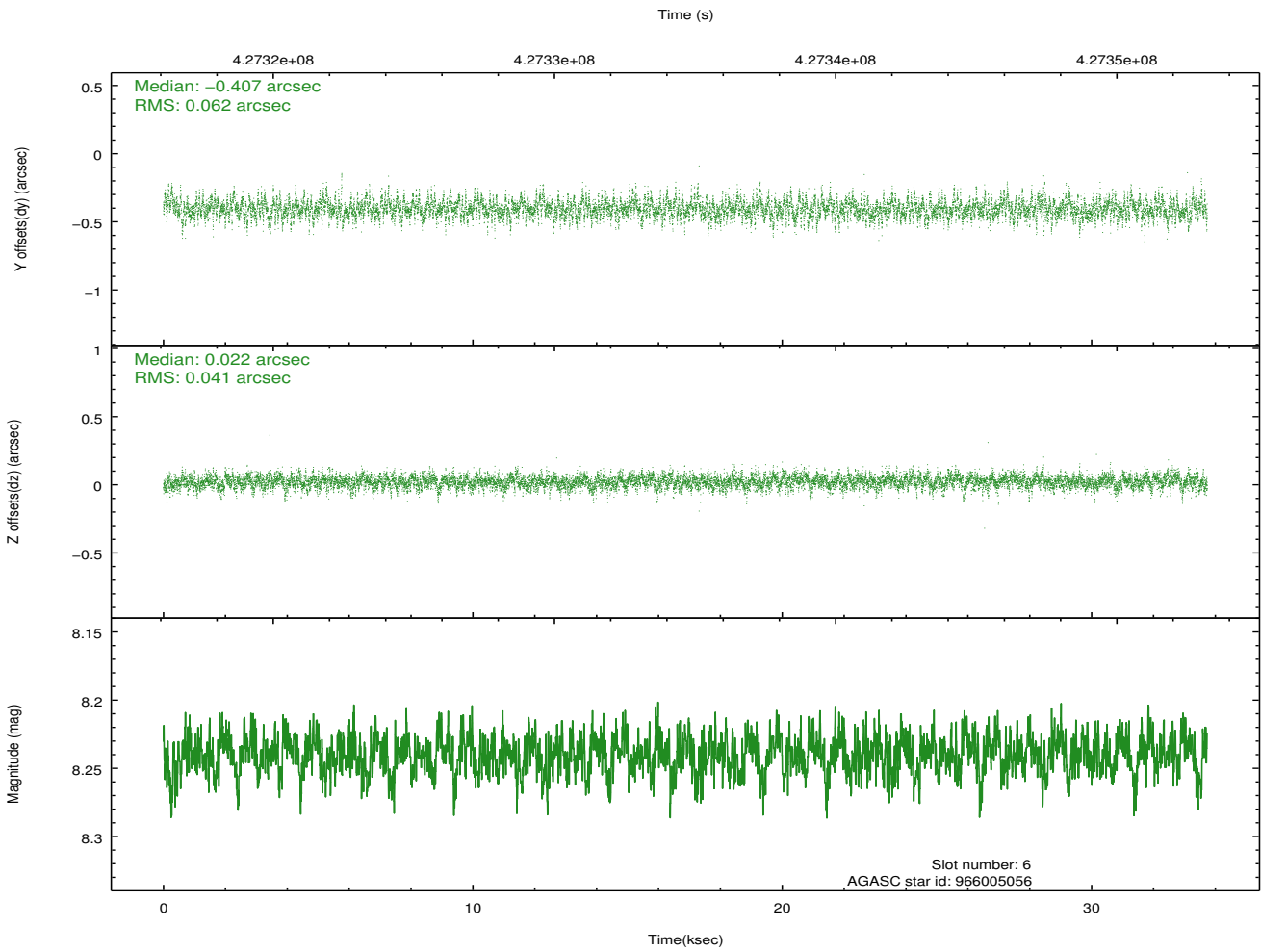
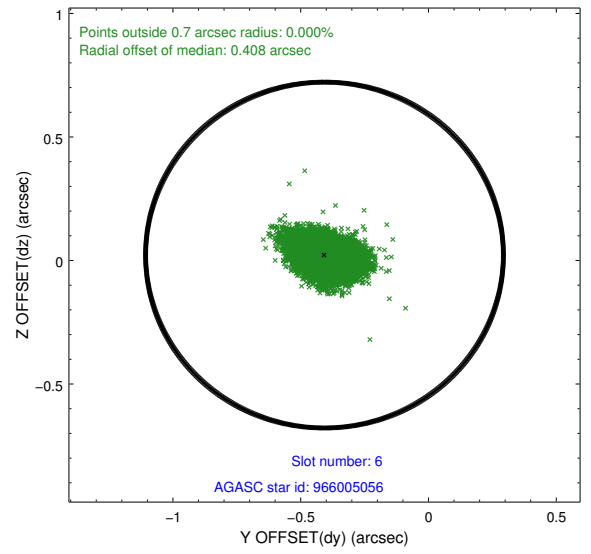
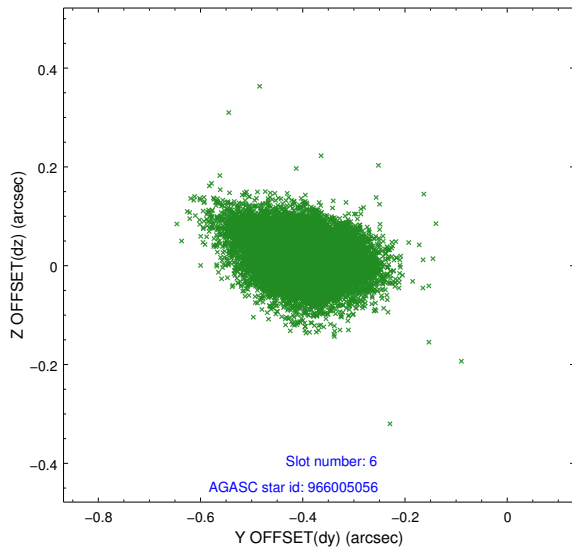
## 2.4.2 Slot 4



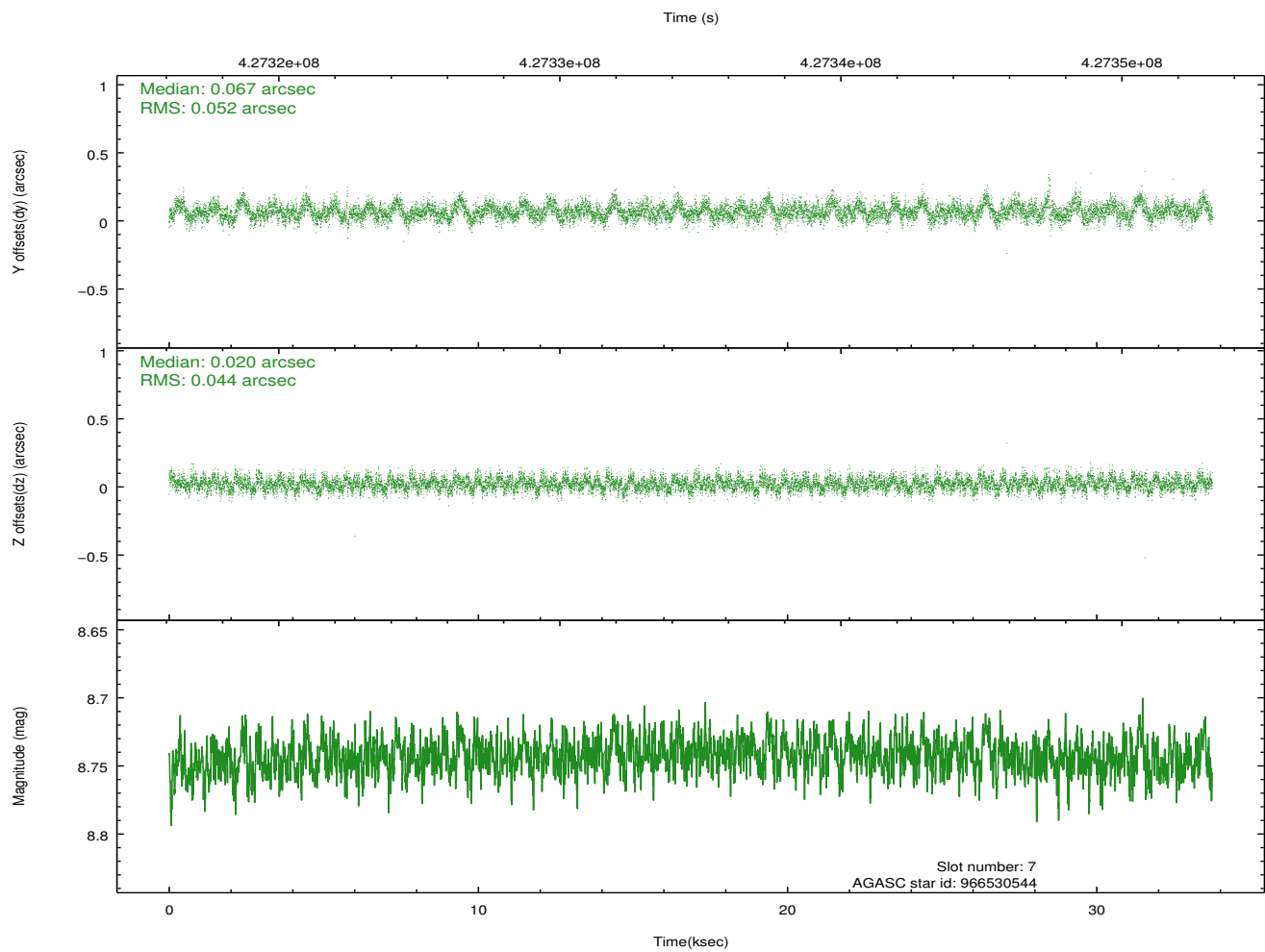
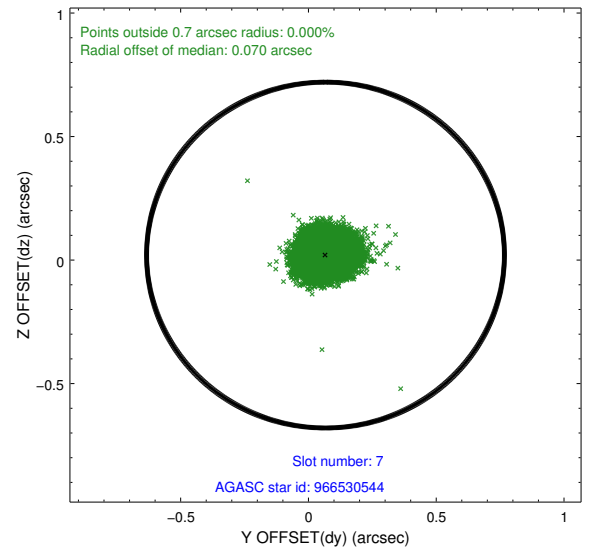
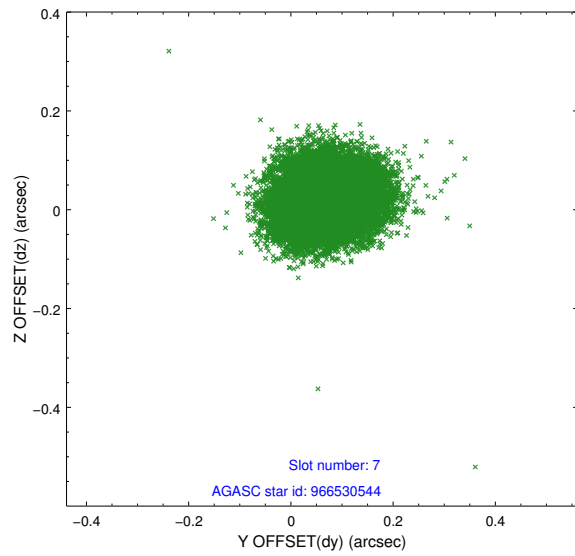
### 2.4.3 Slot 5



## 2.4.4 Slot 6

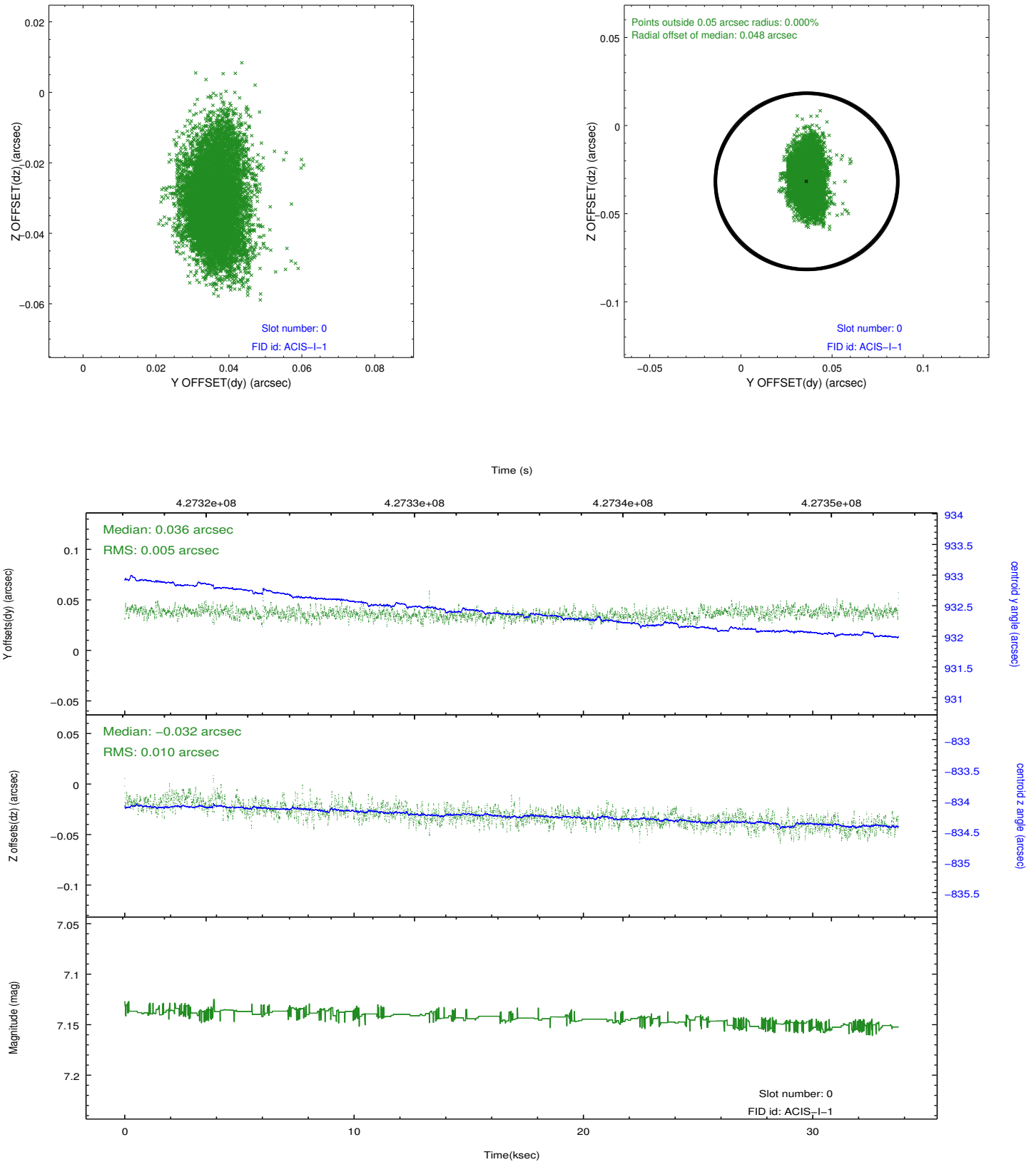


## 2.4.5 Slot 7

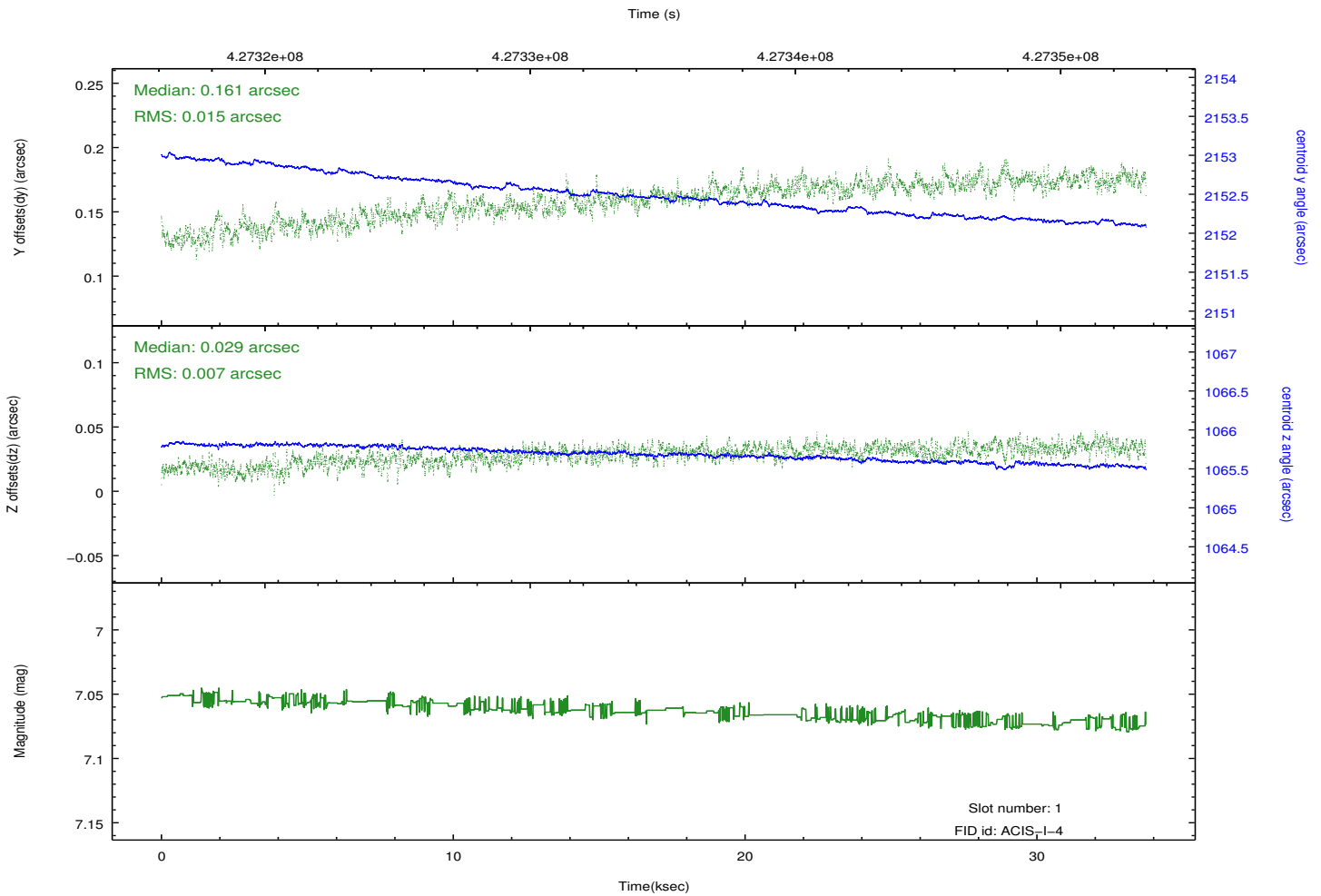
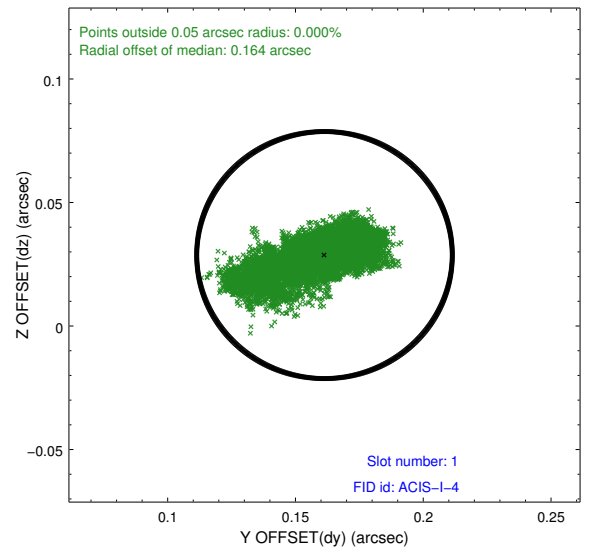
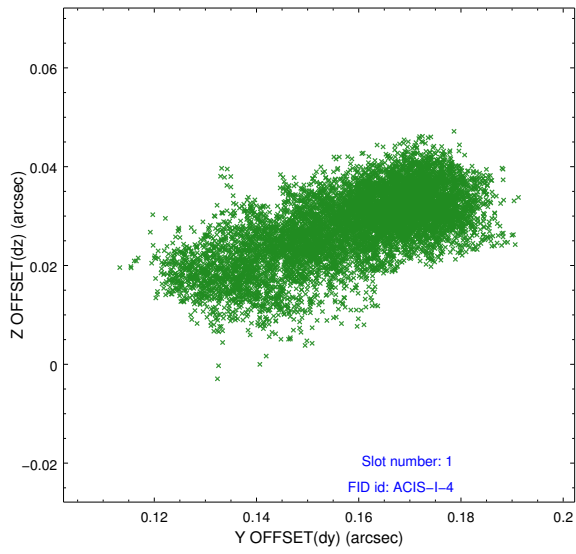


## 2.5 FID Slots

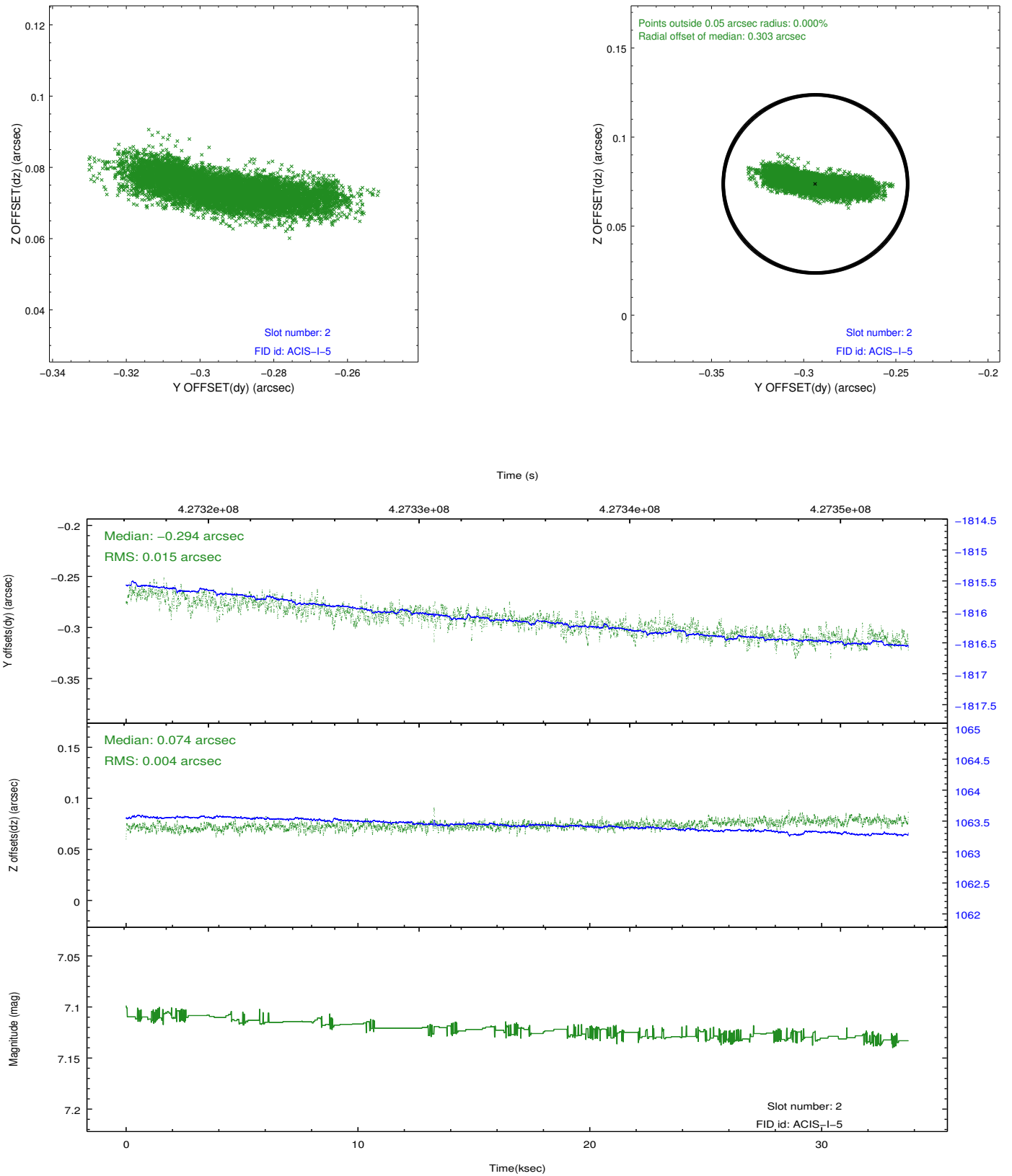
### 2.5.1 Slot 0



## 2.5.2 Slot 1



### 2.5.3 Slot 2



# A Summary

## A.1 Status

V&V Scientist	Beth Sundheim
V&V Date (YYYY-MM-DD)	2012.02.21
V&V Edition	1
V&V Disposition and Status	OK
V&V Charge Time	32.44956427443

## A.2 Comments