

V&V Reference Report

L2 ASCDS Version : 8.2.1

Observation 1242 - L2 Version 3
Chandra X-Ray Center

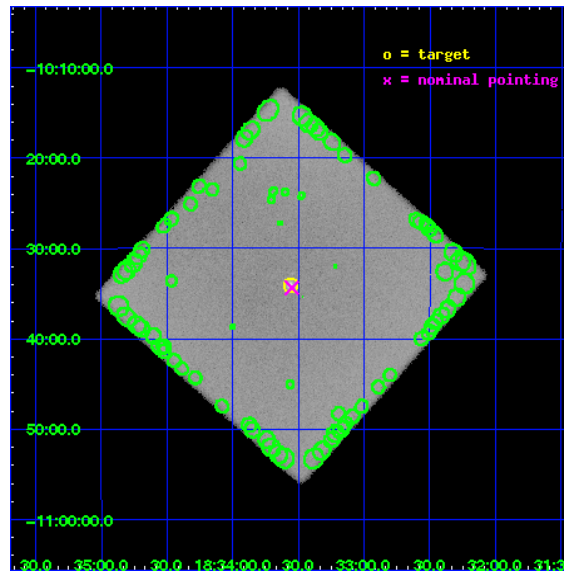
L2 Processing Date : Jan 13 2010

Contents

1	Front	2
2	OBI	3
2.1	OBI	3
2.1.1	Images	3
2.1.2	Parameters	4
2.1.3	Events	4
2.2	Compared Parameters	5
2.3	Aspect	6
2.4	Star Slots	9
2.4.1	Slot 3	9
2.4.2	Slot 4	10
2.4.3	Slot 5	11
2.4.4	Slot 6	12
2.4.5	Slot 7	13
2.5	FID Slots	14
2.5.1	Slot 0	14
2.5.2	Slot 1	15
2.5.3	Slot 2	16
3	Point Sources	17
A	Summary	18
A.1	Status	18
A.2	Comments	18

1 Front

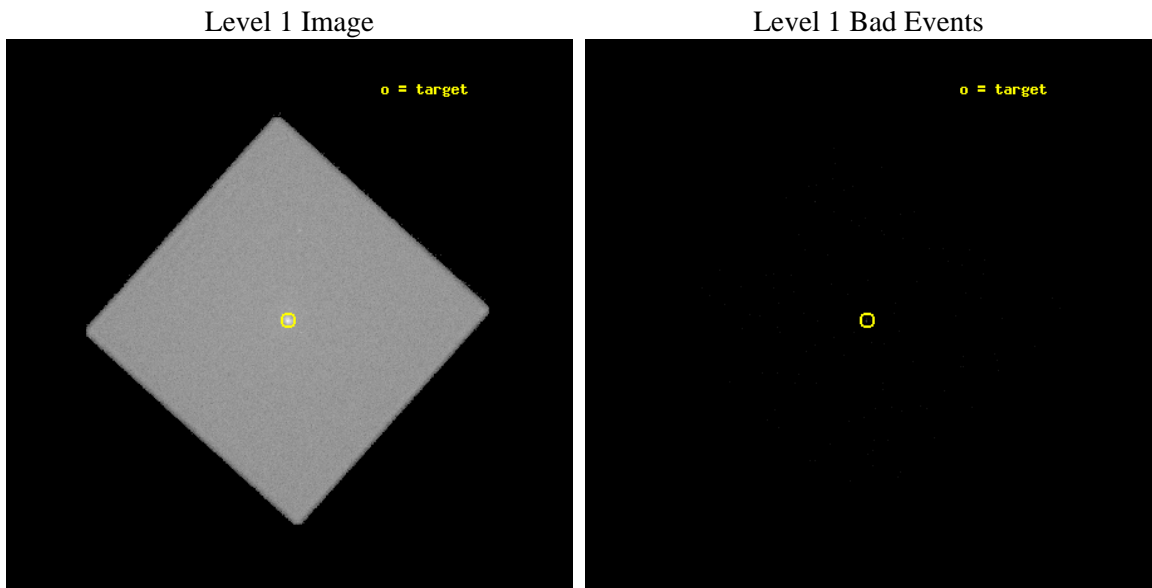
seq_num	580192	Sequence number
obs_id	1242	Observation id
title	HRC RESPONSE TO CONTINUUM SOURCE.	Proposal title
observer	Dr. CXC Calibration	Principal investigator
object	G21.5-0.9	Source name
ra_targ	278.389583	Observer's specified target RA
dec_targ	-10.568528	Observer's specified target Dec
ra_nom	278.38727692431	Nominal RA
dec_nom	-10.572852839778	Nominal Dec
roll_nom	266.972521361	Nominal Roll
revision	3	Processing version of data
ontime	14836.106782705	[s]
livetime	14564.511656566	Ontime multiplied by DTCOR
l2events	840856	Number of level 2 events



2 OBI

2.1 OBI

2.1.1 Images



2.1.2 Parameters

obi_num	0	Obi number	sched_exp_time	15000.000000	Scheduled observation exposure time
ascdsver	8.2.1	Processing system revision	ontime	14836.106782705	[s]
caldbver	4.1.5	 	ll events	1512904	Number of level 1 events
date	2010-01-13T02:58:51	Date and time of file creation			
revision	3	Processing version of data			

2.1.3 Events

Level 1 Events

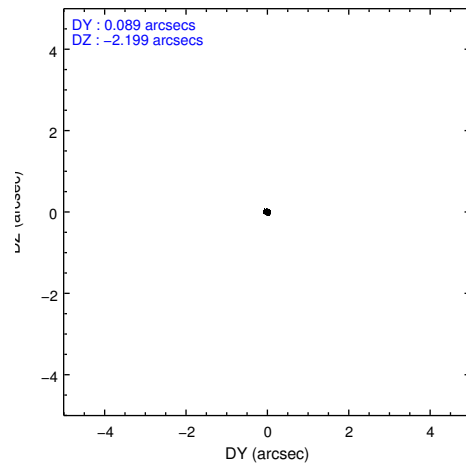
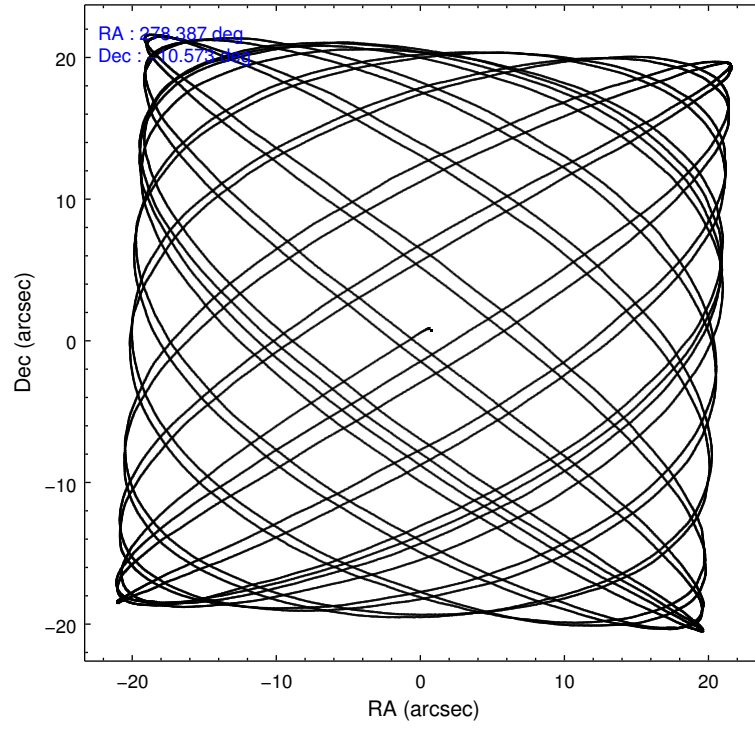
	segment 0
level 1 events	1512904
rejected events	3404
rejected %	0%

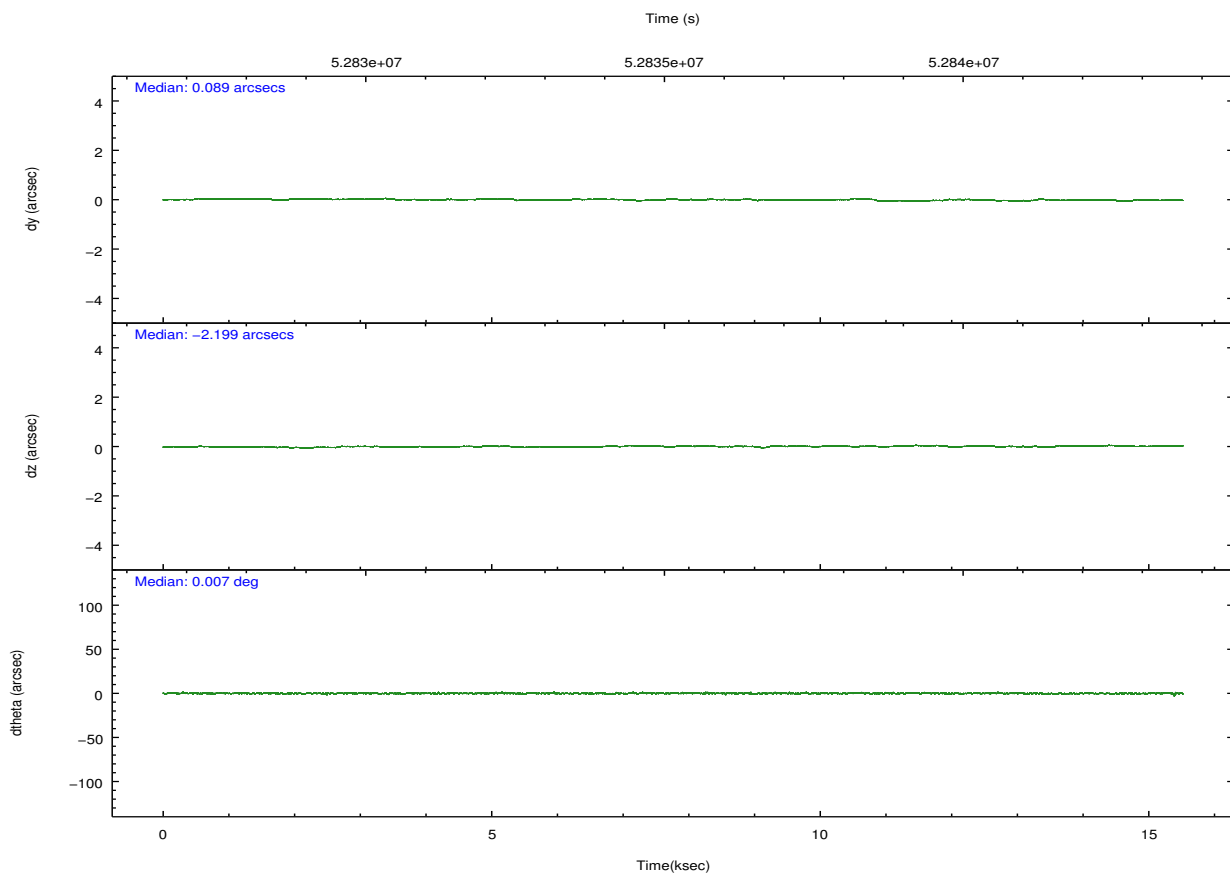
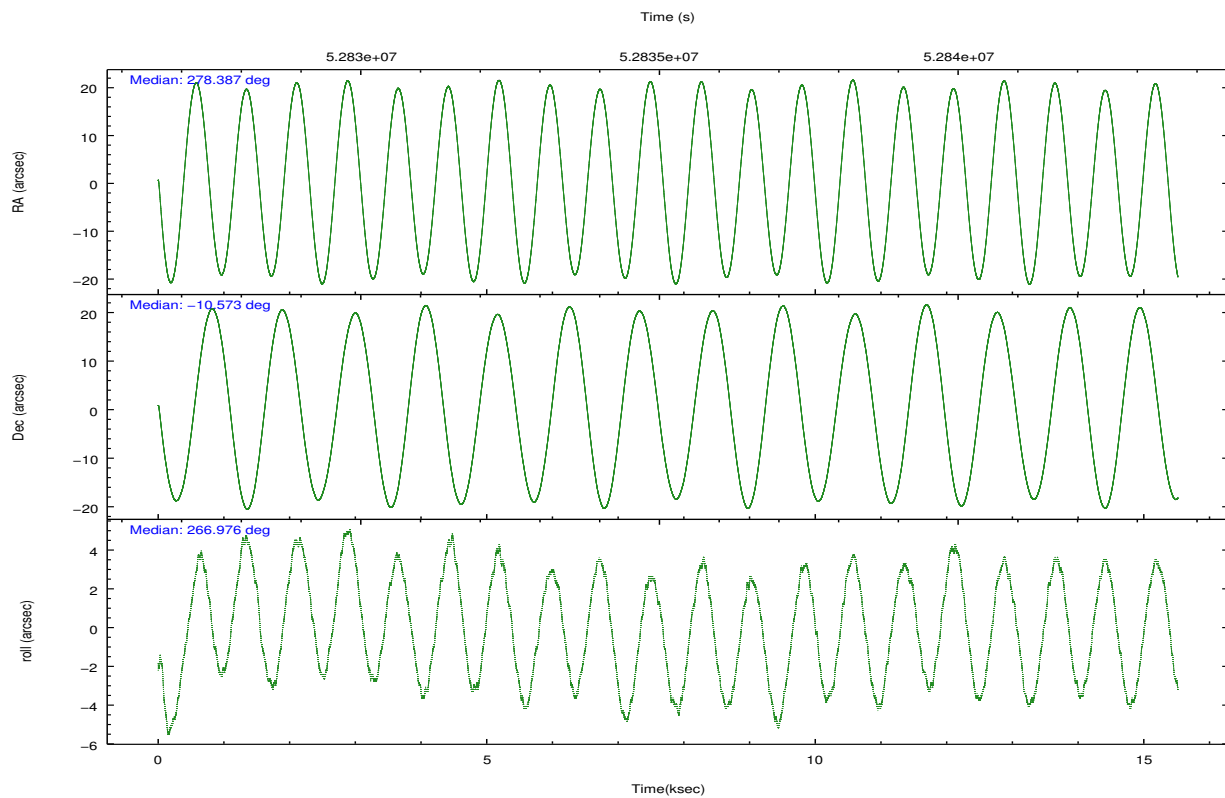
2.2 Compared Parameters

Parameter	Planned	Actual
Instrument	HRC	HRC
Detector	HRC-I	HRC-I
Grating	NONE	NONE
Data mode	OBSERVING	OBSERVING
Observation mode	POINTING	POINTING
Pointing RA	278.374677	278.38727692431
Pointing Dec	-10.548416	-10.57285283977833
Pointing Roll	267.065701	266.9725213609999
SIM focus pos (mm)	-1.040293	-1.016036269358593
SIM defocus (mm)	0	0.02425635130028114
SIM translation stage pos (mm)	126.985494	126.9829799899862
SIM translation stage offset (mm)	0	0.002508901615314585
Observation start time	52827864.184000	52827197.360456
Observation start date	1999-09-04T10:23:20	1999-09-04T10:13:17
Observation end time	52842864.184000	52843037.198525
Observation end date	1999-09-04T14:33:20	1999-09-04T14:37:17

Parameter	Planned	Actual
Obspar format version number	6	6
Obspar file type	PREDICTED	ACTUAL
Obspar update status	NONE	UPDATED

2.3 Aspect



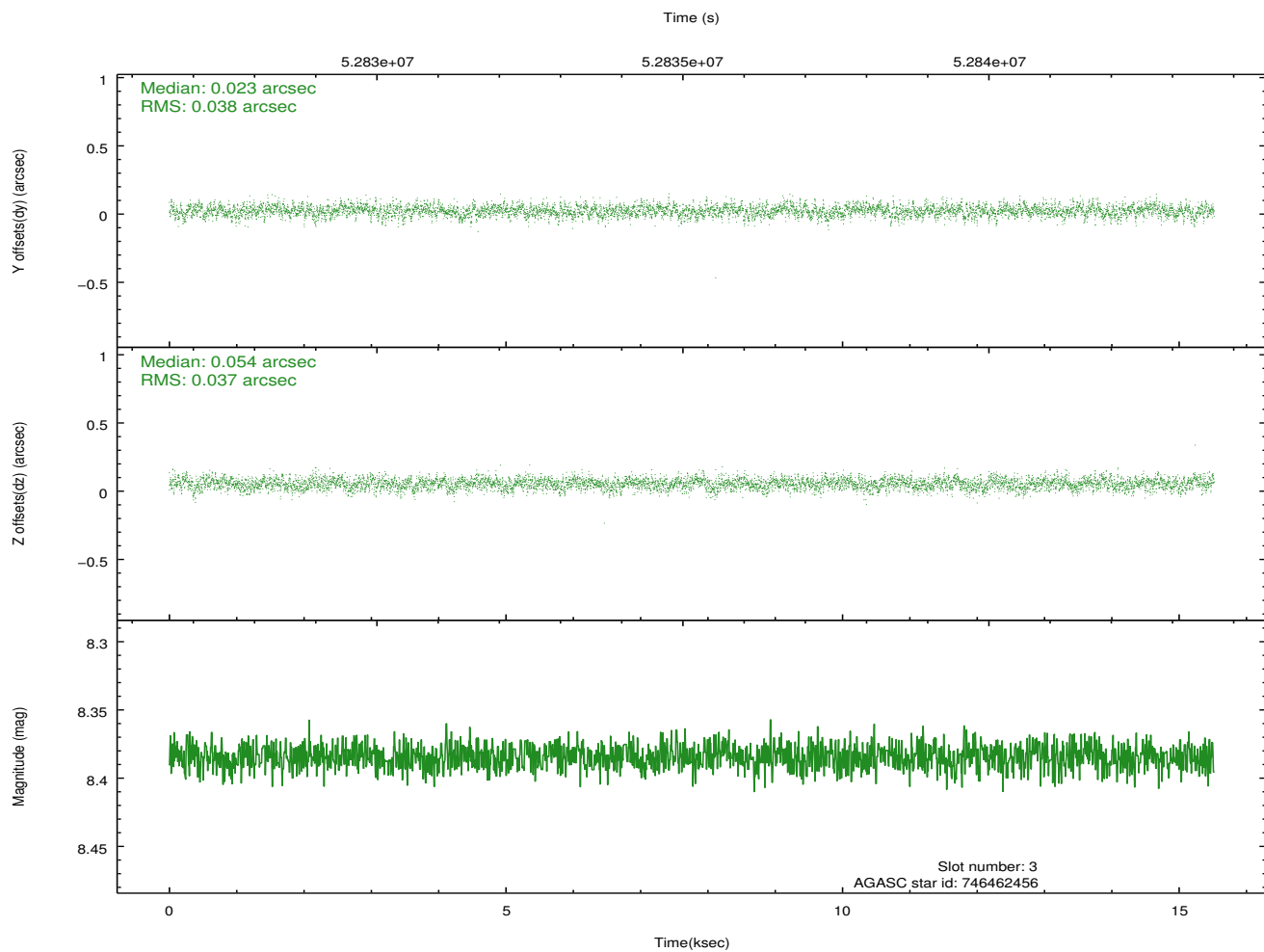
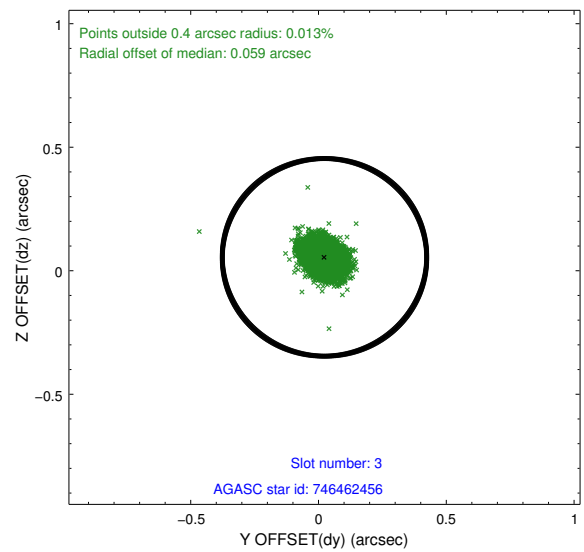
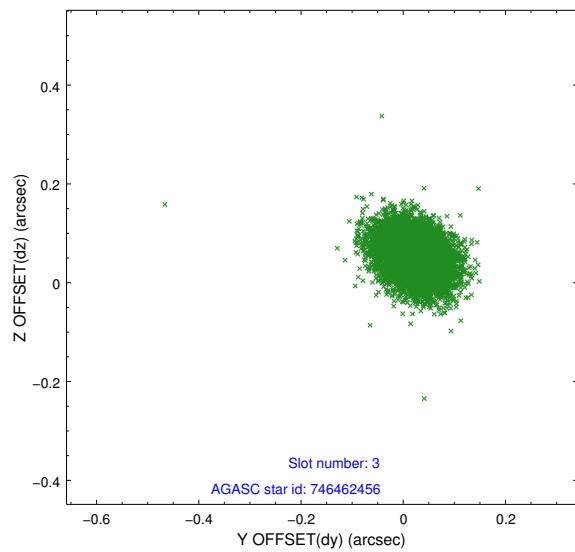


Slot Statistics

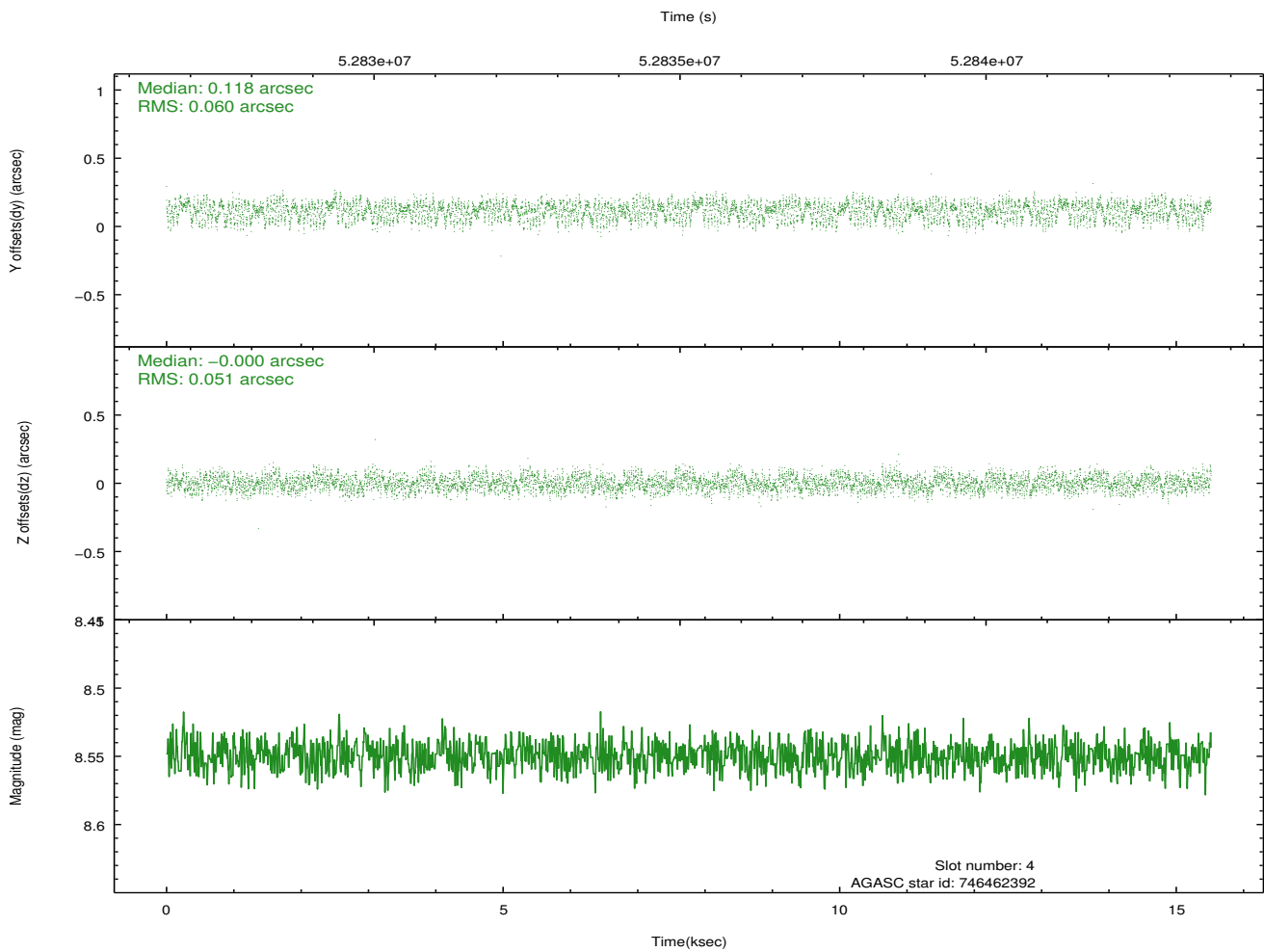
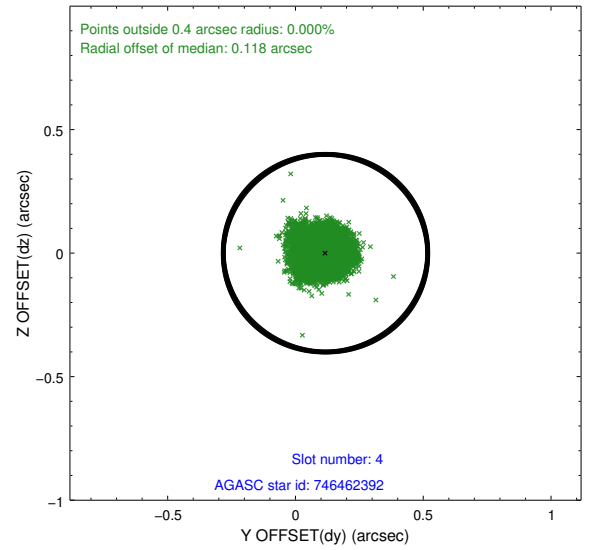
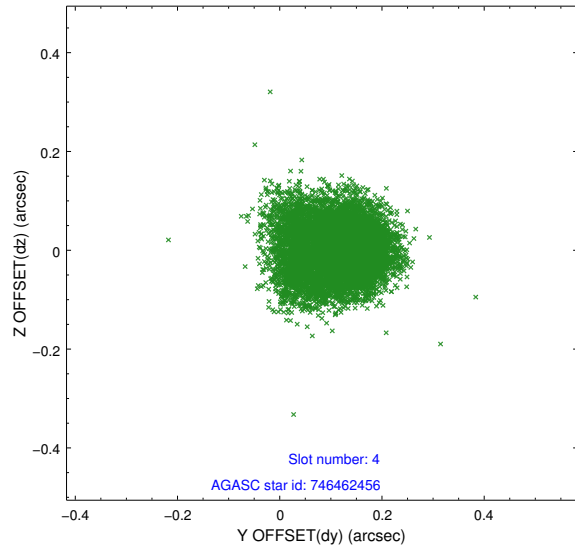
slot	status	id	mag	n_pts	med_dy	med_dz	dr1	dr2	ra	dec	mean_y	mean_z
0	FID	HRC-I-1	6.95	7572	0.033	-0.107	0.006	0.010	0.000000	0.000000	-755.41	-1285.52
1	FID	HRC-I-3	7.04	7572	0.044	0.031	0.006	0.011	0.000000	0.000000	-1184.06	1019.01
2	FID	HRC-I-4	6.98	7572	0.037	-0.013	0.005	0.009	0.000000	0.000000	1287.16	1016.95
3	GUIDE	746462456	8.38	7570	0.023	0.054	0.055	0.092	278.652171	-10.530173	-116.44	978.01
4	GUIDE	746462392	8.55	7571	0.118	-0.000	0.085	0.131	279.038421	-10.890715	1112.25	2407.05
5	GUIDE	746460272	8.93	7566	-0.055	0.017	0.076	0.118	278.847488	-10.152127	-1510.18	1601.22
6	GUIDE	746460328	9.81	7566	-0.065	-0.068	0.129	0.203	278.603974	-9.898096	-2380.72	693.08
7	GUIDE	746461728	9.80	7567	-0.014	-0.005	0.098	0.157	278.986921	-10.530755	-173.55	2161.49

2.4 Star Slots

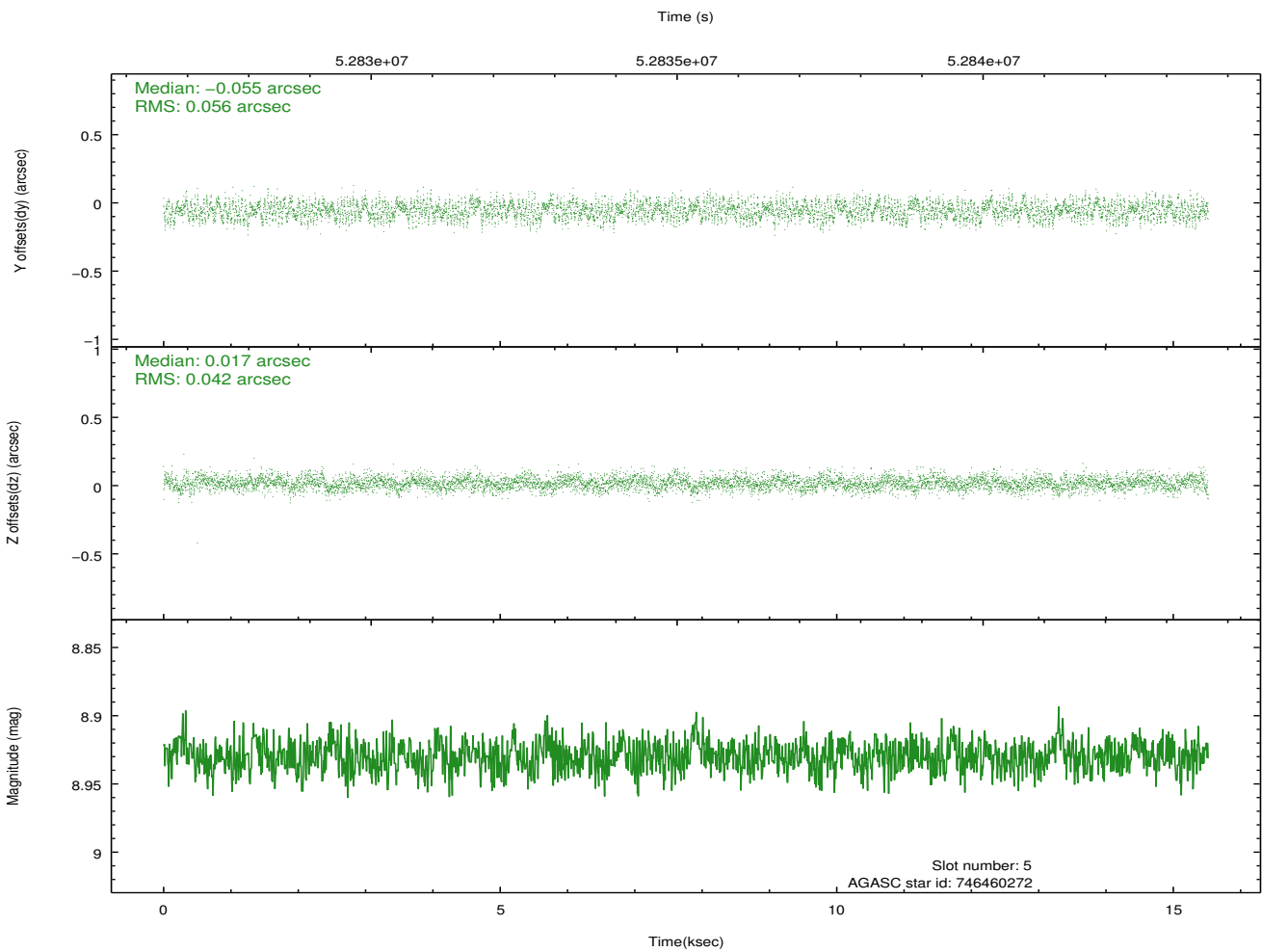
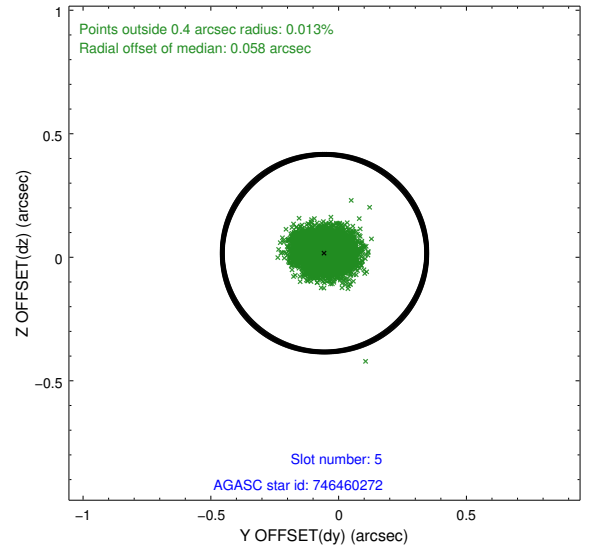
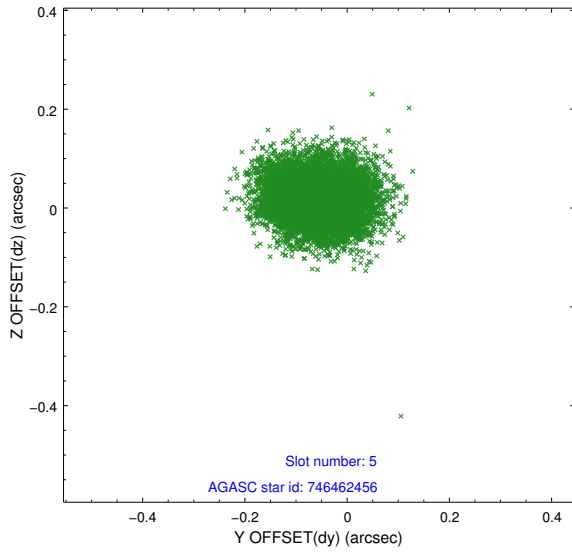
2.4.1 Slot 3



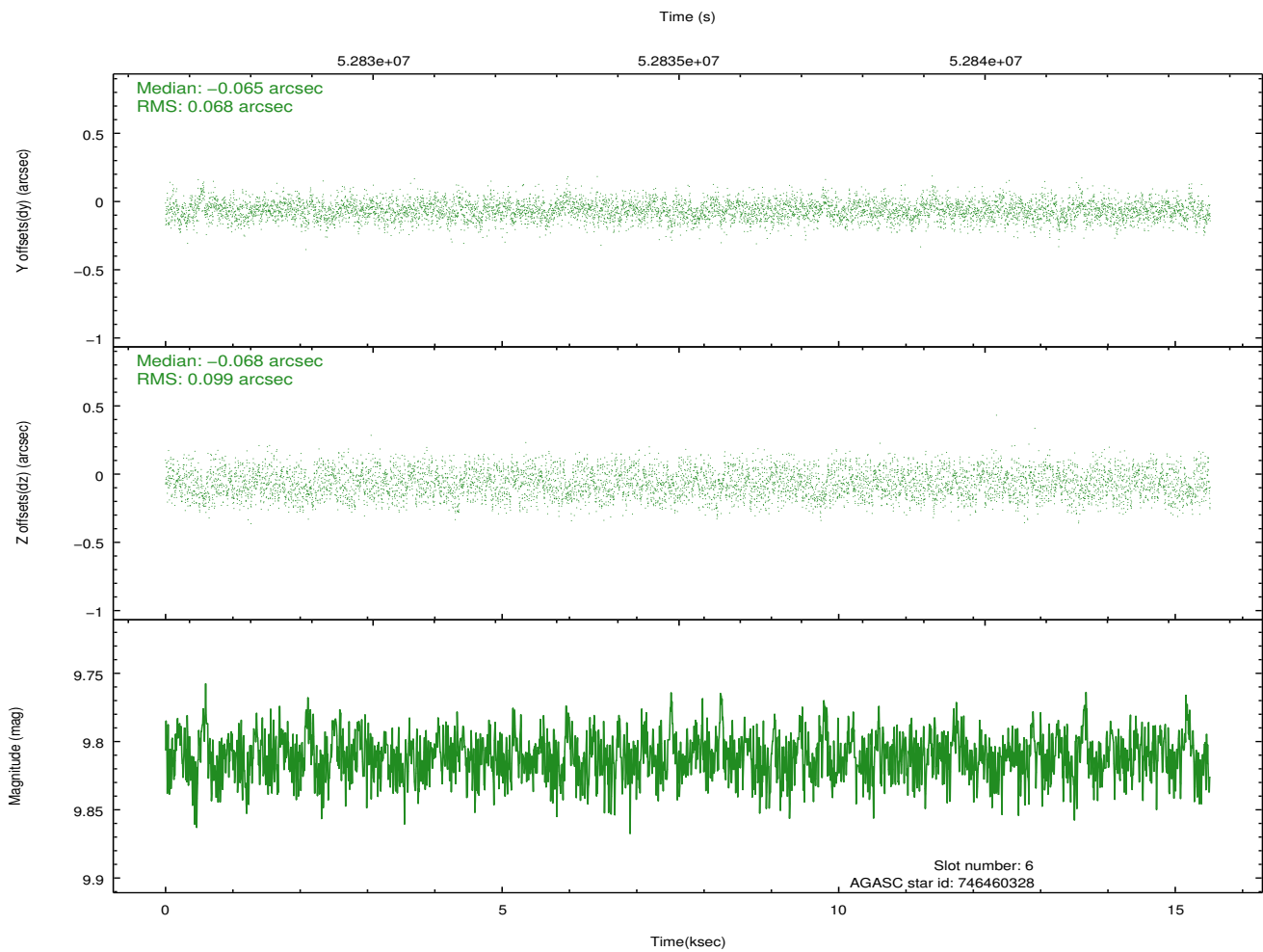
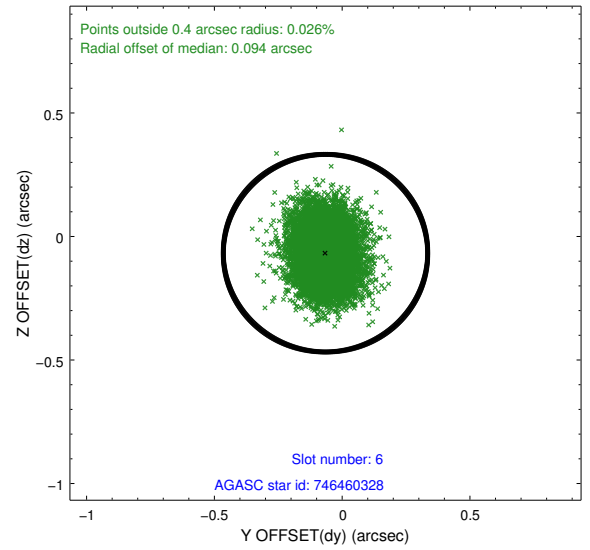
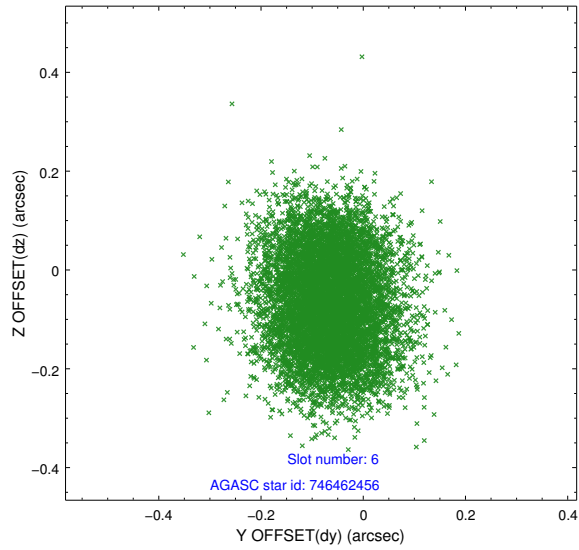
2.4.2 Slot 4



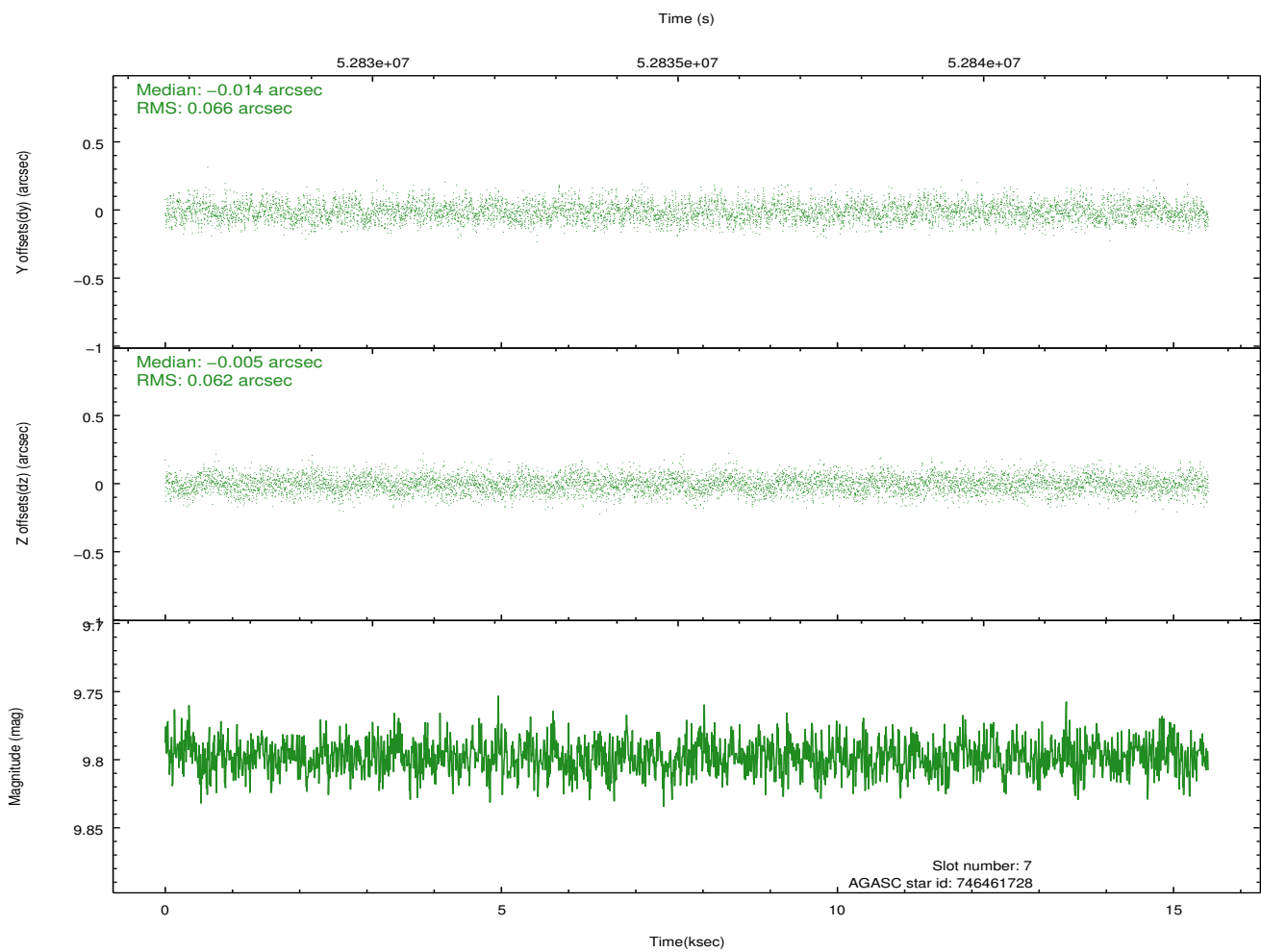
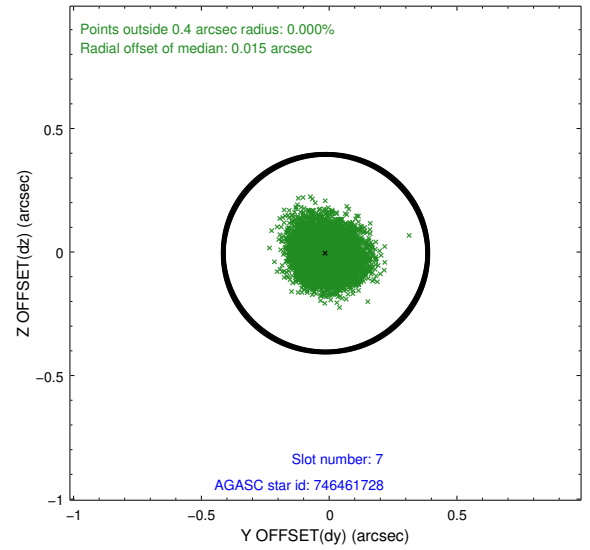
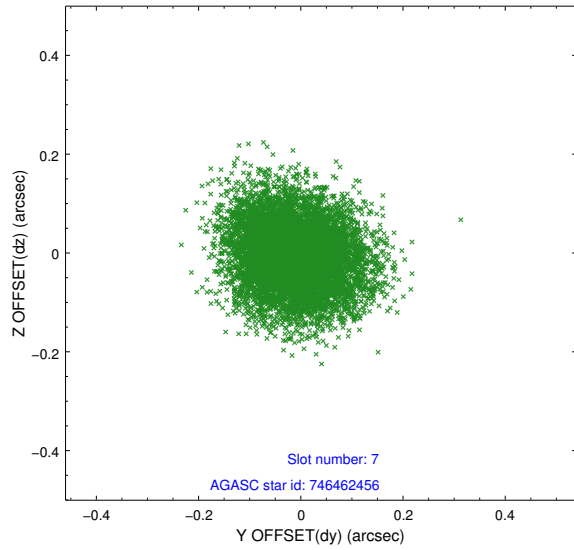
2.4.3 Slot 5



2.4.4 Slot 6

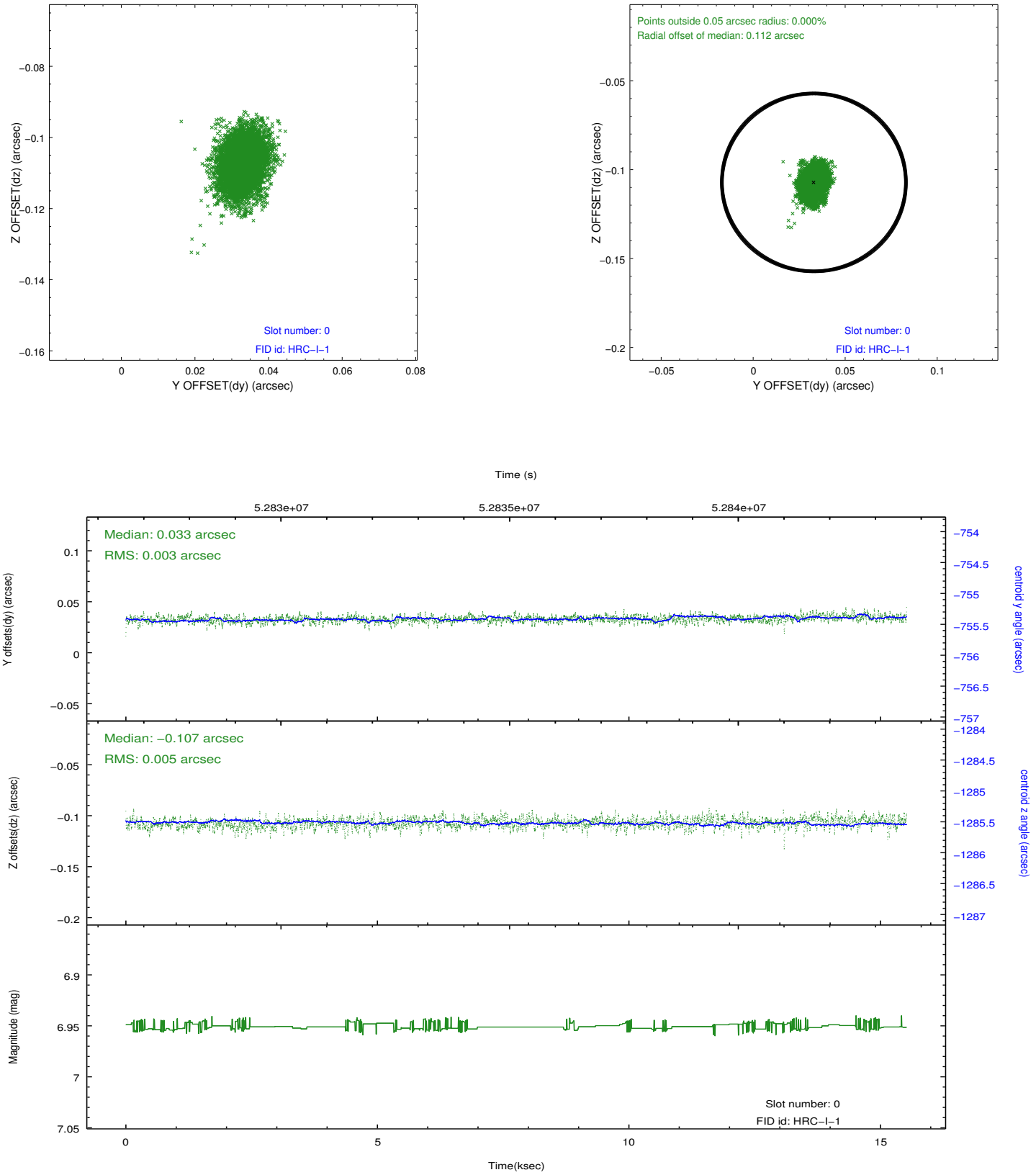


2.4.5 Slot 7

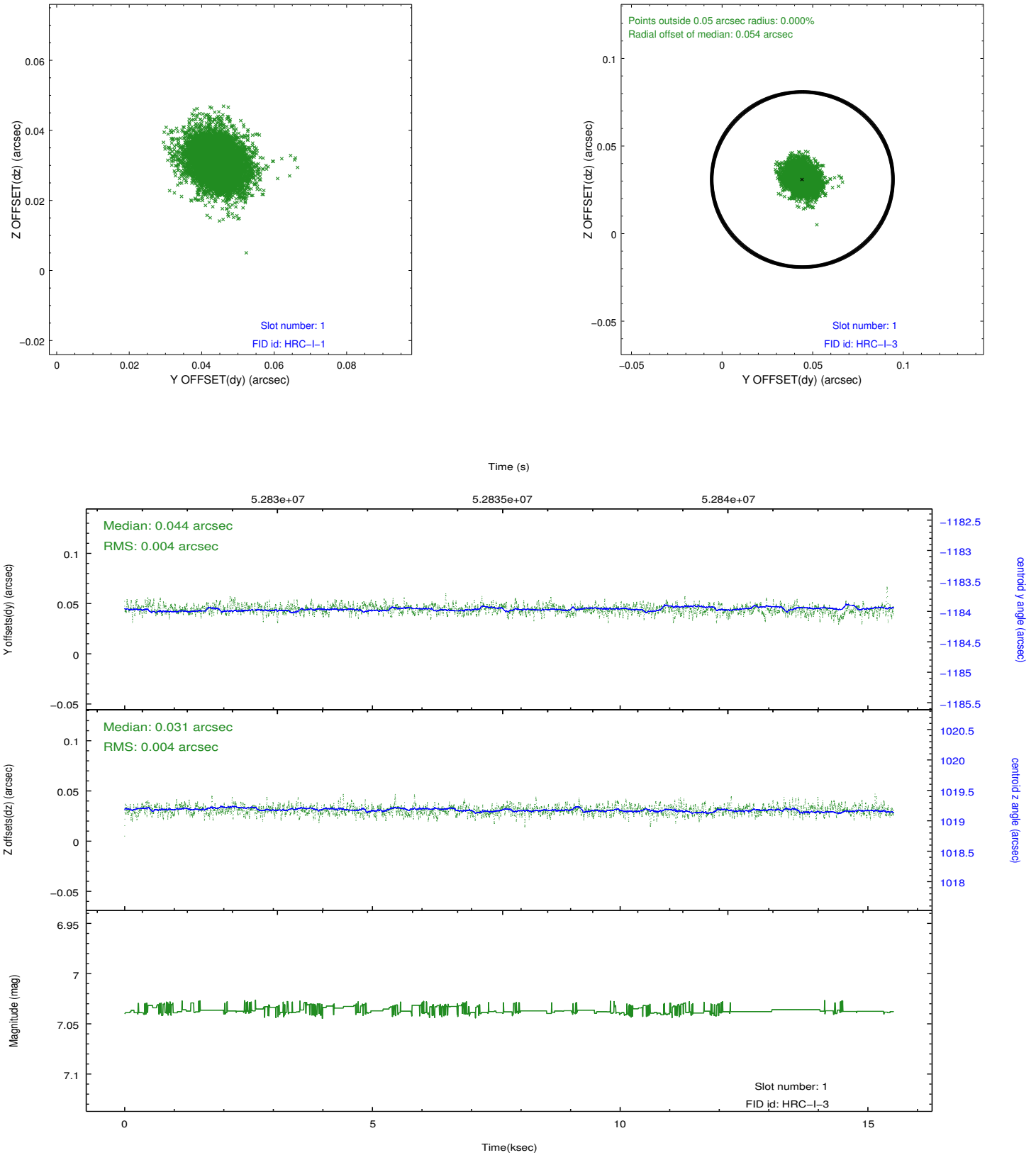


2.5 FID Slots

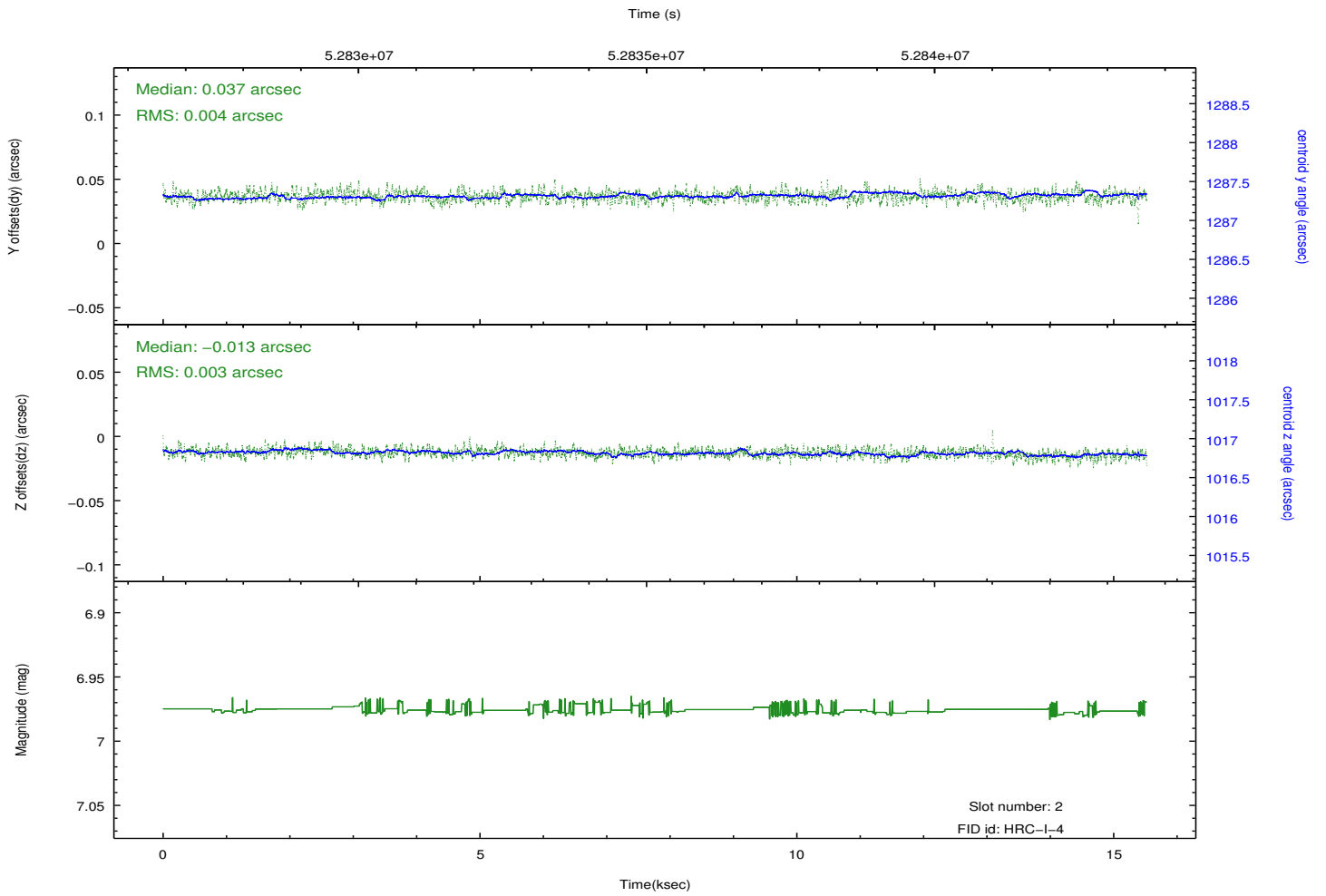
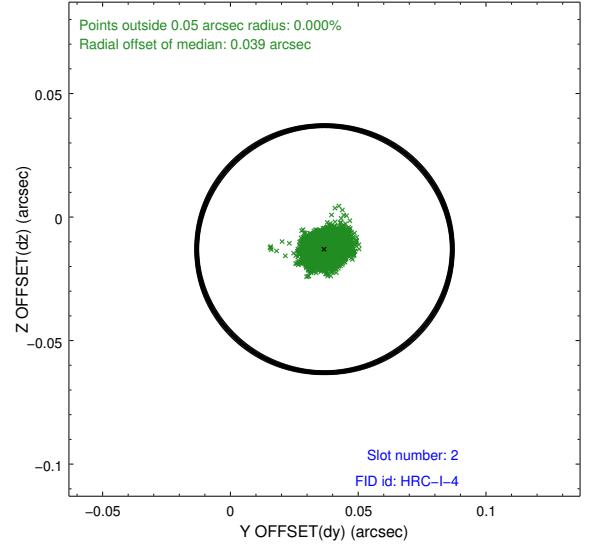
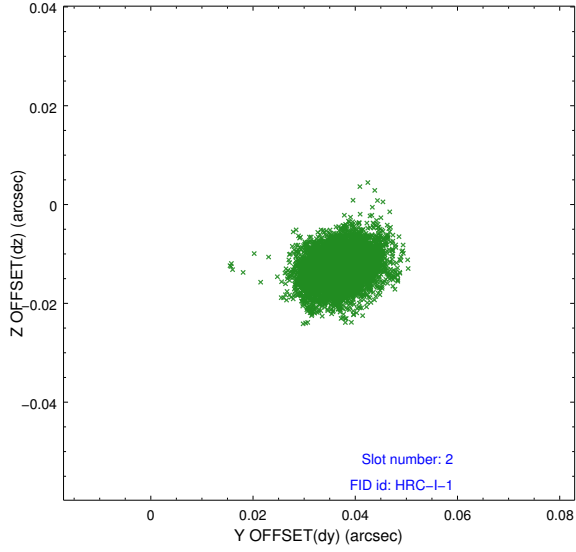
2.5.1 Slot 0



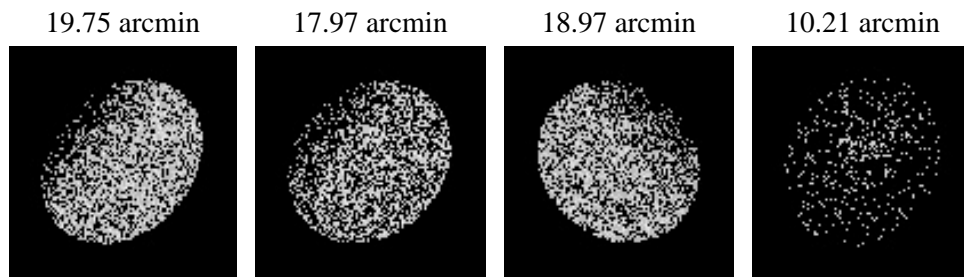
2.5.2 Slot 1



2.5.3 Slot 2



3 Point Sources



A Summary

A.1 Status

V&V Scientist	Beth Sundheim
V&V Date (YYYY-MM-DD)	2010.02.01
V&V Edition	1
V&V Disposition and Status	OK
V&V Charge Time	14.832

A.2 Comments