

V&V Reference Report

L2 ASCDS Version : 8.4.3

Observation 12752 - L2 Version 2
Chandra X-Ray Center

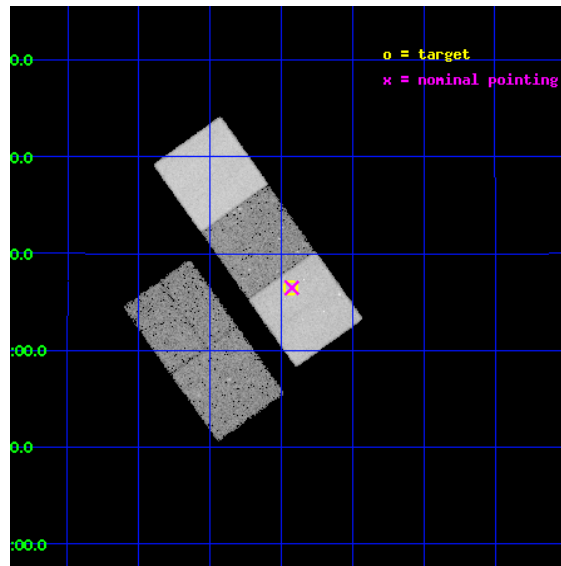
L2 Processing Date : Feb 27 2012

Contents

1	Front	2
2	OBI	3
2.1	OBI	3
2.1.1	Images	3
2.1.2	Bias	3
2.1.3	Parameters	4
2.1.4	Events	4
2.2	Compared Parameters	5
2.3	Aspect	6
2.4	Star Slots	9
2.4.1	Slot 3	9
2.4.2	Slot 4	10
2.4.3	Slot 5	11
2.4.4	Slot 6	12
2.4.5	Slot 7	13
2.5	FID Slots	14
2.5.1	Slot 0	14
2.5.2	Slot 1	15
2.5.3	Slot 2	16
A	Summary	17
A.1	Status	17
A.2	Comments	17

1 Front

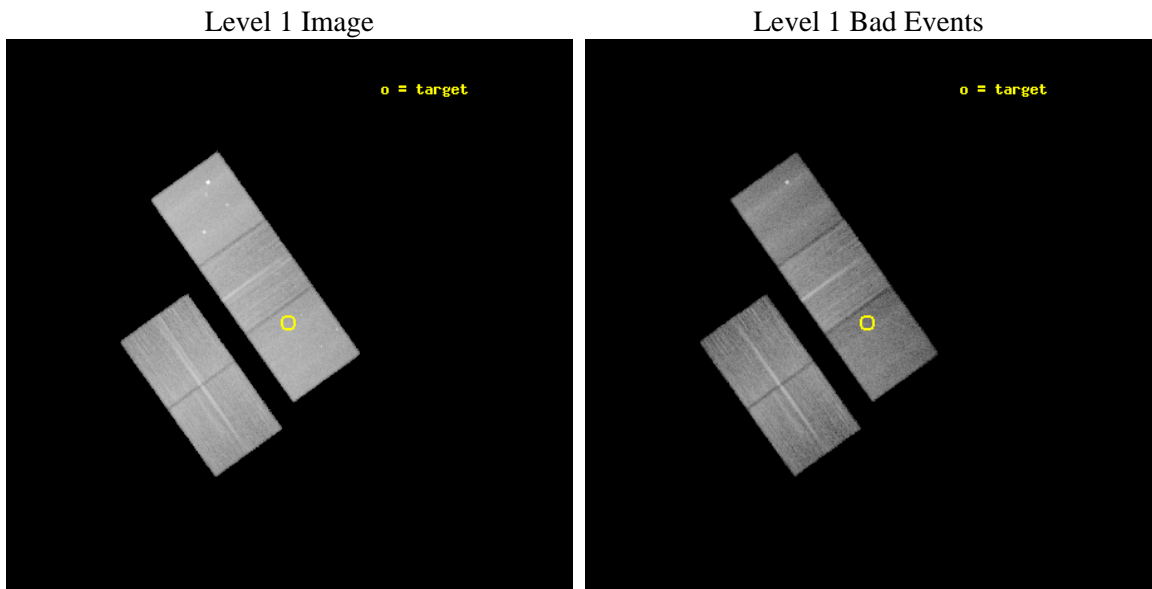
seq_num	702388	Sequence number
obs_id	12752	Observation id
title	X-ray and HST Imaging of Kpc-Scale Binary AGNs	Proposal title
observer	Dr Yue Shen	Principal investigator
object	SDSSJ1332+0606	Source name
dtycle	0	
cycle	P	events from which exps? Prim/Second/Both
ra_targ	203.109583	Observer's specified target RA [deg]
dec_targ	6.107611	Observer's specified target Dec [deg]
ra_nom	203.10647613404	Nominal RA [deg]
dec_nom	6.1077173567841	Nominal Dec [deg]
roll_nom	54.473058970658	Nominal Roll [deg]
revision	2	Processing version of data
ontime	24269.900186658	Sum of GTIs [s]
lvertime	23952.796073479	Livetime [s]
ontime2	24269.900186658	Sum of GTIs [s]
ontime3	24269.900186658	Sum of GTIs [s]
ontime5	24269.900186658	Sum of GTIs [s]
ontime6	24269.900186658	Sum of GTIs [s]
ontime7	24269.900186658	Sum of GTIs [s]
l2events	268660	Number of level 2 events



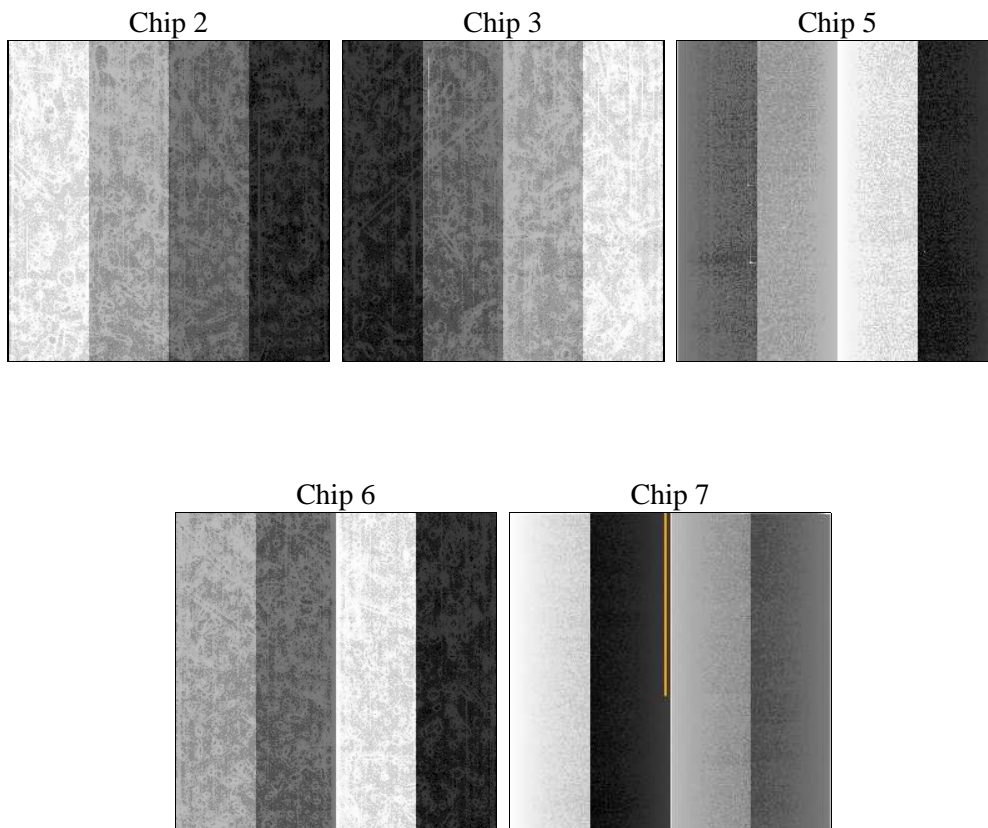
2 OBI

2.1 OBI

2.1.1 Images



2.1.2 Bias



2.1.3 Parameters

obi_num	1	Obi number	sched_exp_time	24224.916000	[s] Scheduled observation exposure time
ascdsver	8.4.3	Processing system revision	ontime	24269.900186658	Sum of GTIs [s]
caldbver	4.4.8	 	ontime2	24269.900186658	Sum of GTIs [s]
date	2012-02-27T14:18:19	Date and time of file creation	ontime3	24269.900186658	Sum of GTIs [s]
revision	2	Processing version of data	ontime5	24269.900186658	Sum of GTIs [s]
			ontime6	24269.900186658	Sum of GTIs [s]
			ontime7	24269.900186658	Sum of GTIs [s]
			l1events	1059504	Number of level 1 events

2.1.4 Events

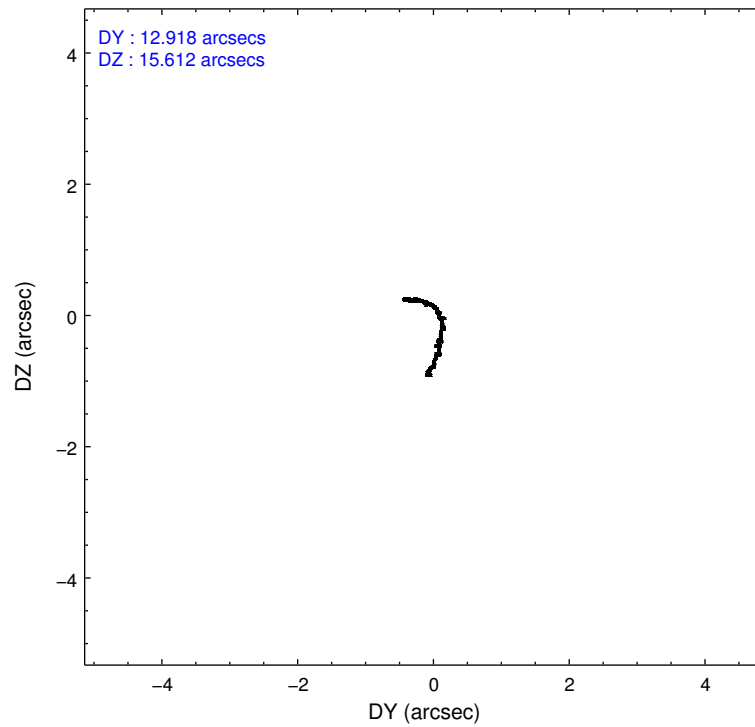
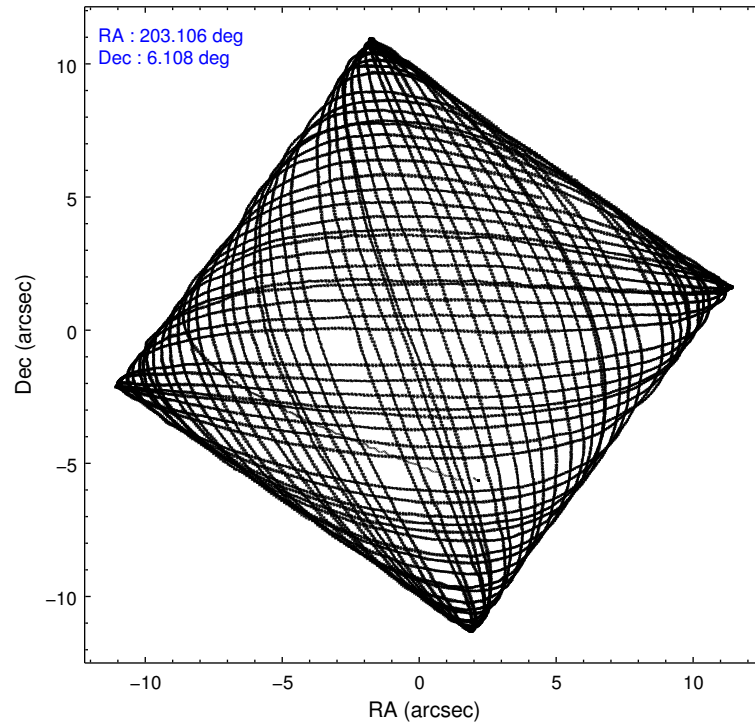
	ccd 2	ccd 3	ccd 5	ccd 6	ccd 7
level 1 events	192709	179664	274843	199336	212952
rejected events	166643	161386	142426	174455	115165
rejected %	86%	89%	51%	87%	54%

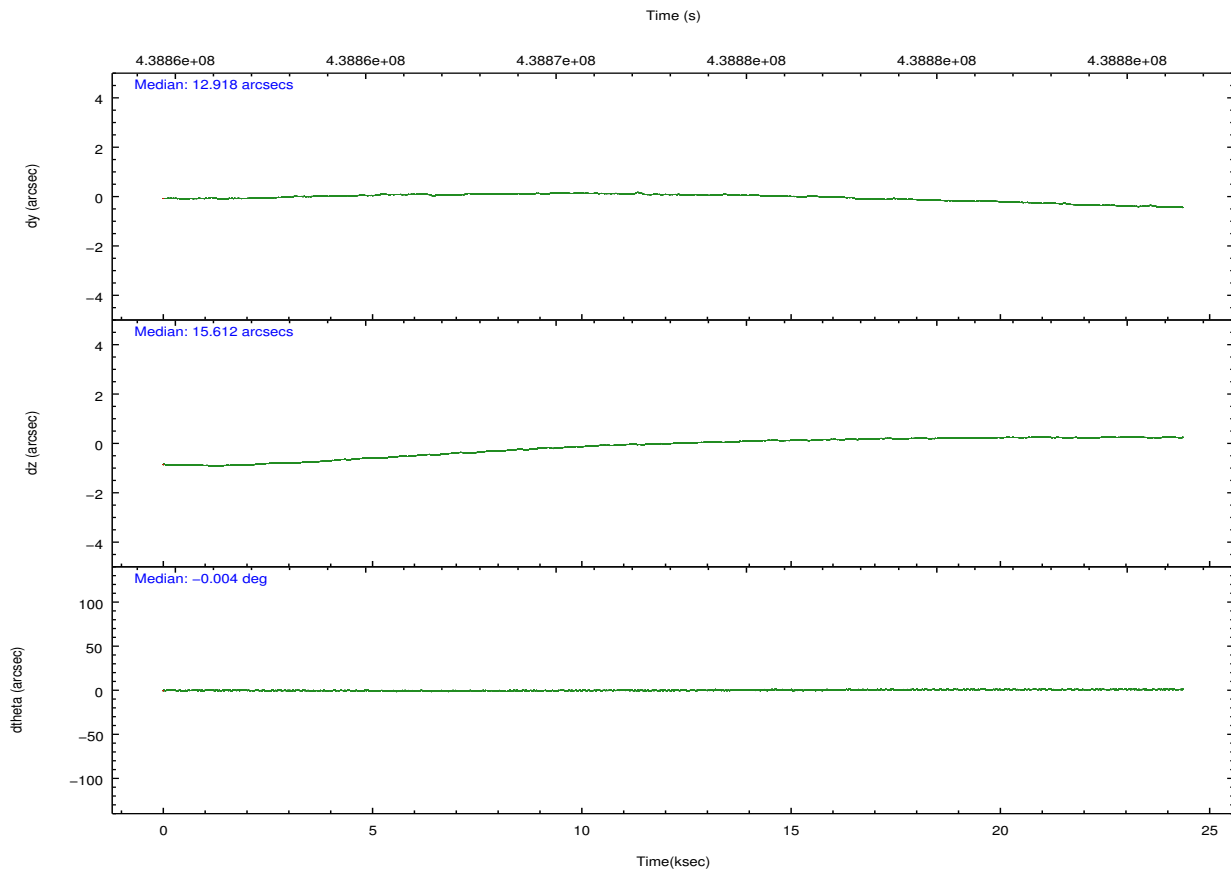
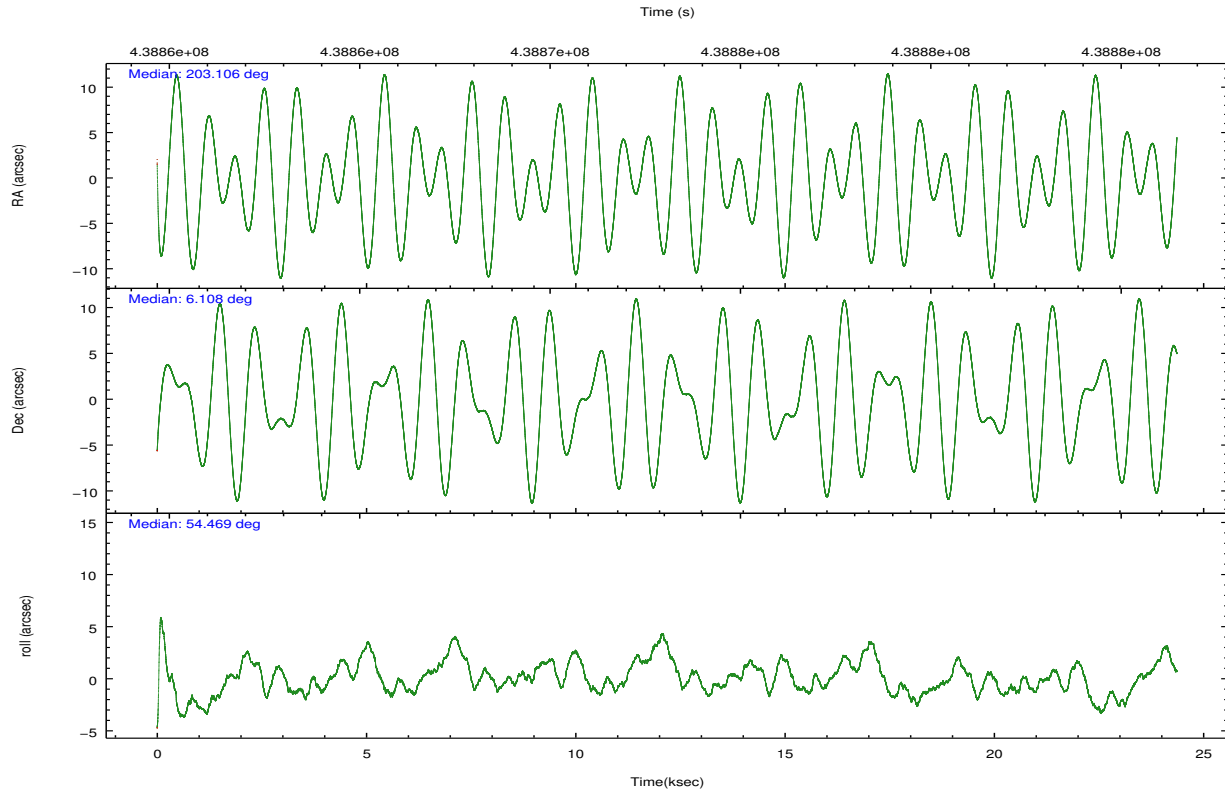
	ccd 2	ccd 3	ccd 5	ccd 6	ccd 7
grade 0 events	11189	7267	13418	10760	9748
	5%	4%	4%	5%	4%
grade 1 events	130	94	707	147	372
	0%	0%	0%	0%	0%
grade 2 events	6789	4032	42676	6293	22026
	3%	2%	15%	3%	10%
grade 3 events	1718	1822	6223	1930	8727
	0%	1%	2%	0%	4%
grade 4 events	2583	1799	5963	1874	8900
	1%	1%	2%	0%	4%
grade 5 events	6440	7260	19537	7365	21548
	3%	4%	7%	3%	10%
grade 6 events	3791	3362	64154	4025	48392
	1%	1%	23%	2%	22%
grade 7 events	160069	154028	122165	166942	93239
	83%	85%	44%	83%	43%

2.2 Compared Parameters

Parameter	Planned	Actual	Parameter	Planned	Actual
Instrument	ACIS	ACIS	Obspar format version number	7	7
Detector	ACIS-23567	ACIS-23567	Obspar file type	PREDICTED	ACTUAL
Grating	NONE	NONE	Obspar update status	NONE	UPDATED
Data mode	FAINT	FAINT	CCD I0 on	N	N
Observation mode	POINTING	POINTING	CCD I1 on	N	N
[deg] Pointing RA	203.104218	203.1064761340387	CCD I2 on	Y	Y
[deg] Pointing Dec	6.080465	6.107717356784107	CCD I3 on	Y	Y
[deg] Pointing Roll	54.316677	54.47305897065837	CCD S0 on	N	N
[mm] SIM focus pos	-0.684267	-0.6828225247311905	CCD S1 on	O1	Y
[mm] SIM defocus	0	0.001444936568705701	CCD S2 on	Y	Y
[mm] SIM translation stage pos	-190.132523	-190.1400660498719	CCD S3 on	Y	Y
[mm] SIM translation stage offset	0	0.00754346686406393	CCD S4 on	N	N
[s] Observation start time (MET)	438861033.184000	438859962.98012	CCD S5 on	N	N
Observation start date	2011-11-28T09:49:27	2011-11-28T09:32:42	Number of optional ACIS chips dropped	0	0
[s] Observation end time (MET)	438885258.184000	438885483.94396	On-chip summing requested	N	N
Observation end date	2011-11-28T16:33:12	2011-11-28T16:38:03	Subarray requested	NONE	NONE
Read mode	TIMED	TIMED	Alternating exposures requested	N	N
			[s] Primary exposure time	0.000000	3.1

2.3 Aspect



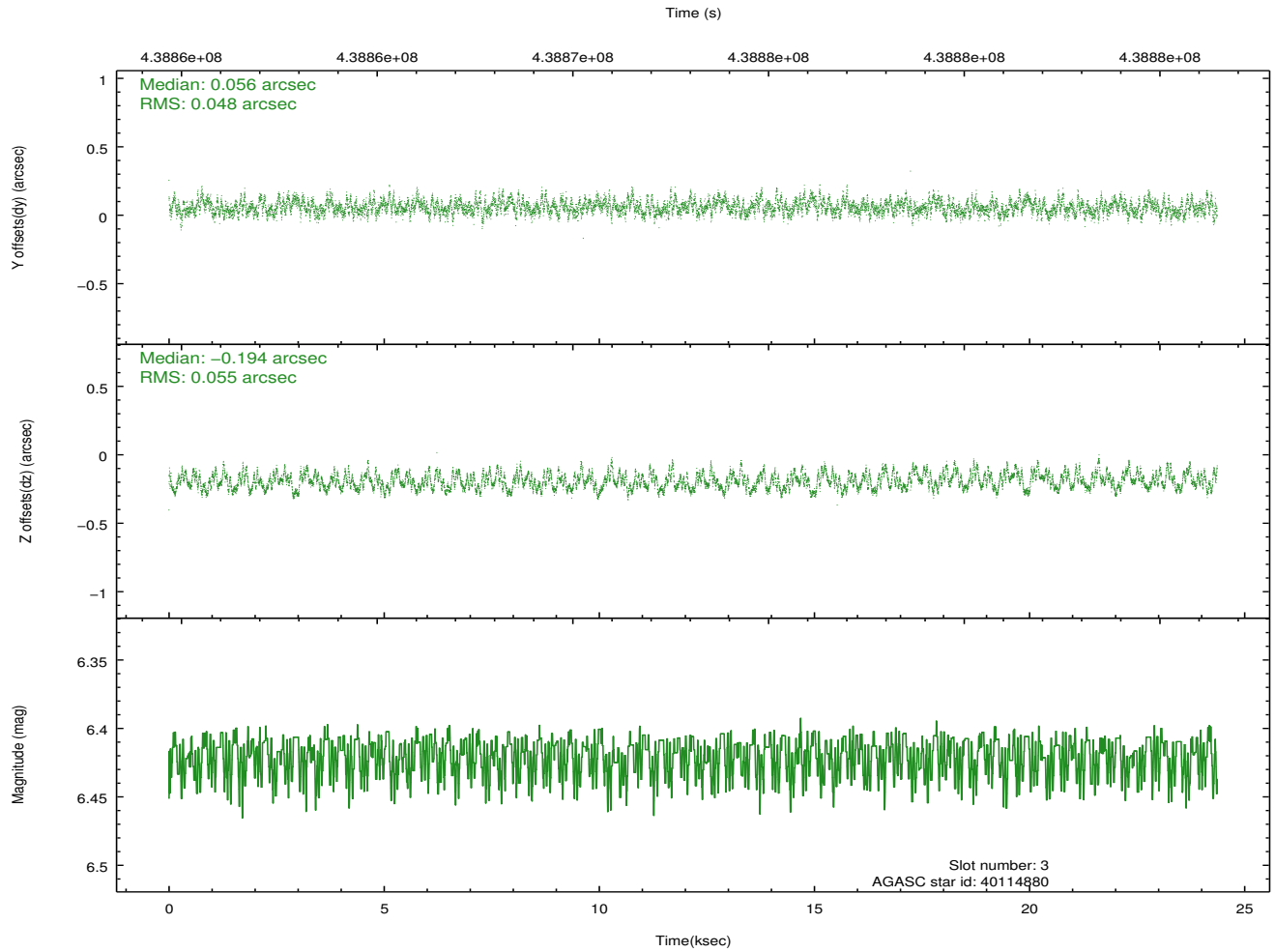
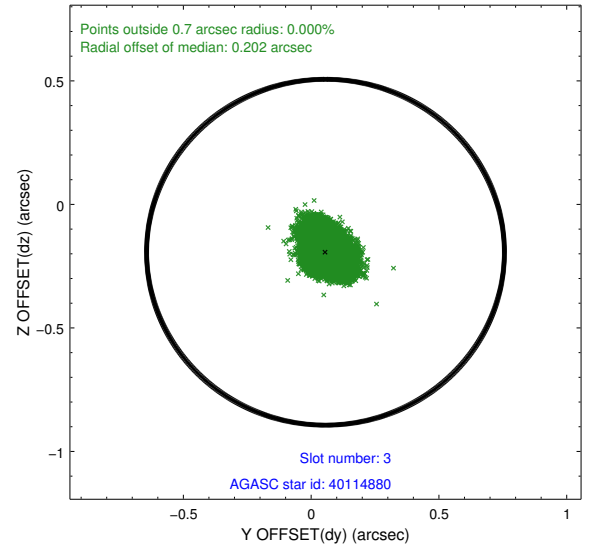
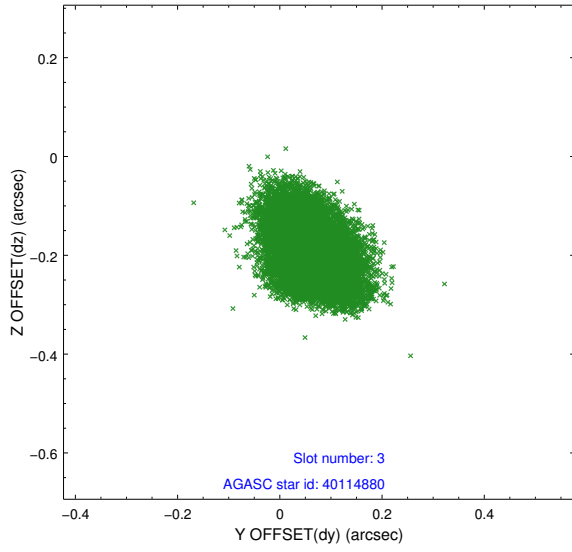


Slot Statistics

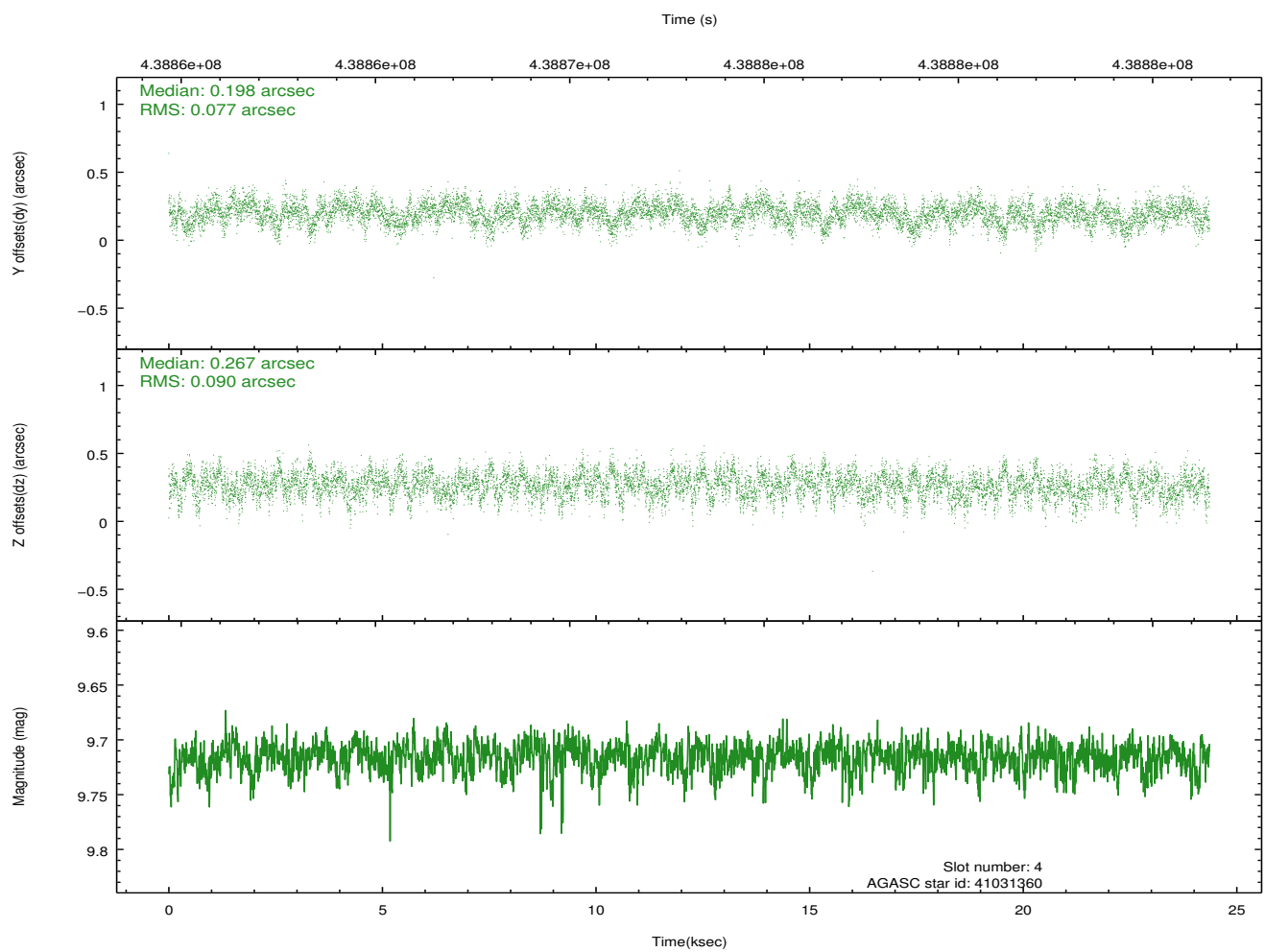
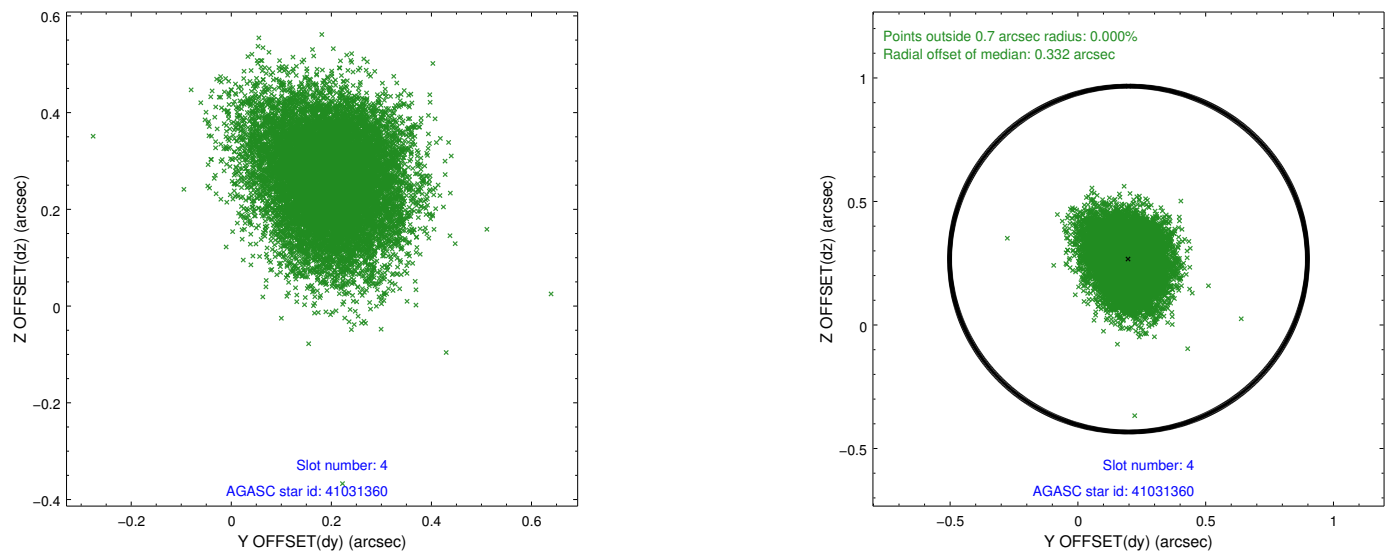
slot	status	id	mag	n_pts	med_dy	med_dz	dr1	dr2	ra	dec	mean_y	mean_z
0	FID	ACIS-S-2	6.91	5943	-0.050	-0.004	0.009	0.013	0.000000	0.000000	-765.82	-1736.86
1	FID	ACIS-S-4	7.00	5943	0.188	0.025	0.007	0.012	0.000000	0.000000	2147.63	171.53
2	FID	ACIS-S-5	7.03	5943	-0.169	-0.013	0.009	0.014	0.000000	0.000000	-1818.63	165.29
3	GUIDE	40114880	6.42	11886	0.056	-0.194	0.078	0.125	202.490167	6.013530	-1476.26	1646.23
4	GUIDE	41031360	9.72	11864	0.198	0.267	0.125	0.204	203.234672	5.457645	-1547.81	-1686.88
5	GUIDE	41033248	9.80	11874	-0.156	-0.212	0.195	0.289	203.016640	6.453230	907.37	1039.09
6	GUIDE	41036136	6.57	11886	0.001	0.104	0.082	0.134	203.288318	5.853077	-279.16	-1012.84
7	GUIDE	41030568	8.83	11874	-0.113	0.036	0.110	0.176	203.736283	6.452363	2407.56	-1054.53

2.4 Star Slots

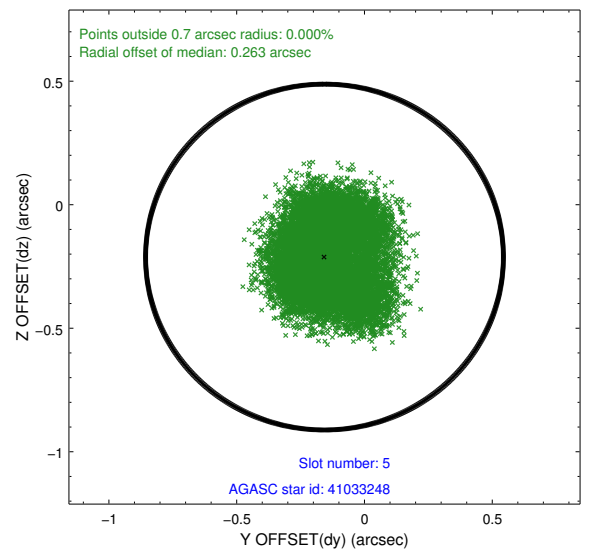
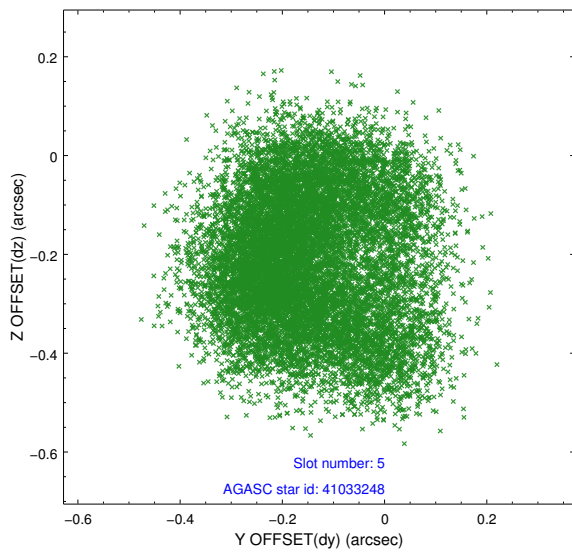
2.4.1 Slot 3



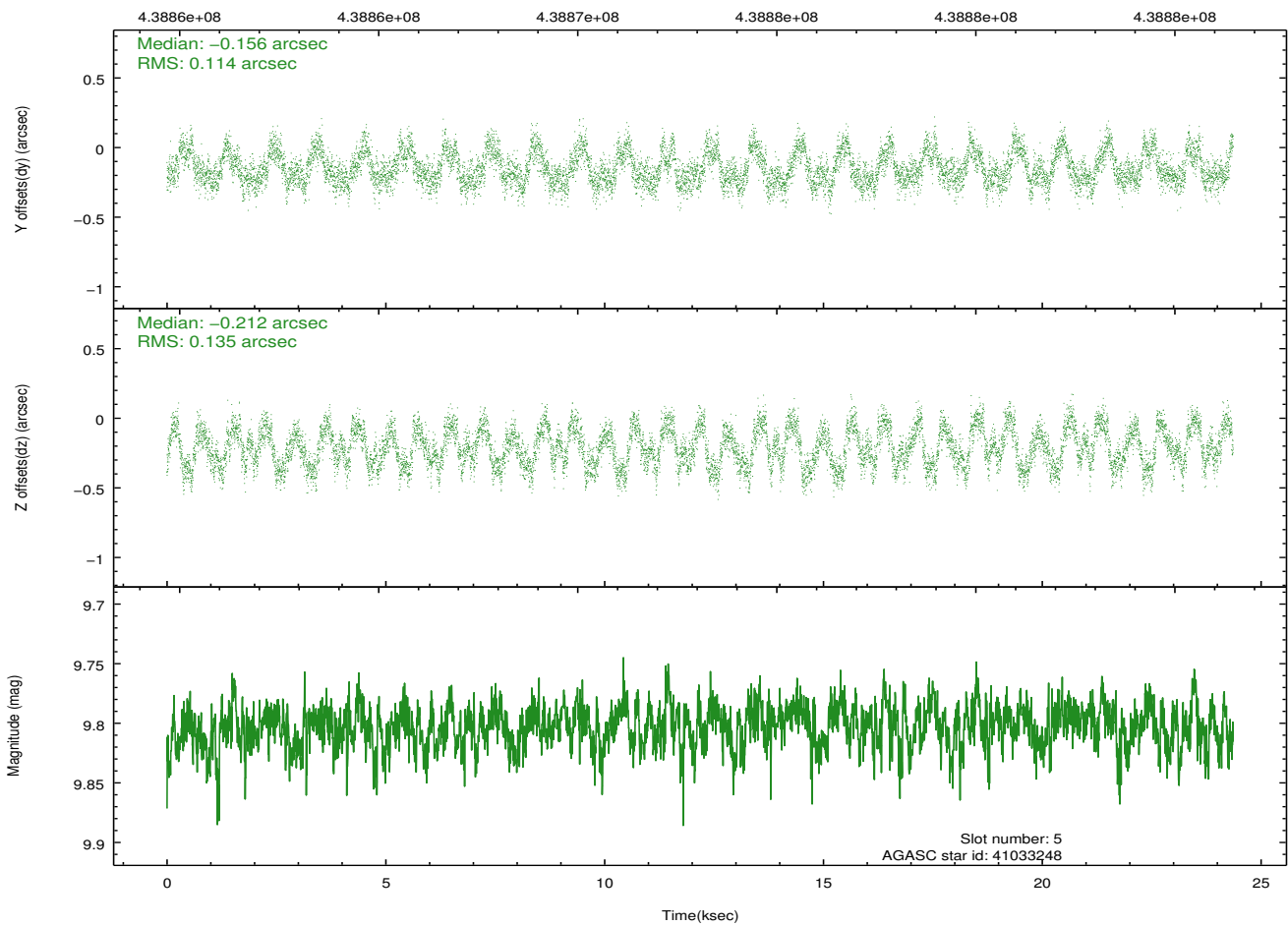
2.4.2 Slot 4



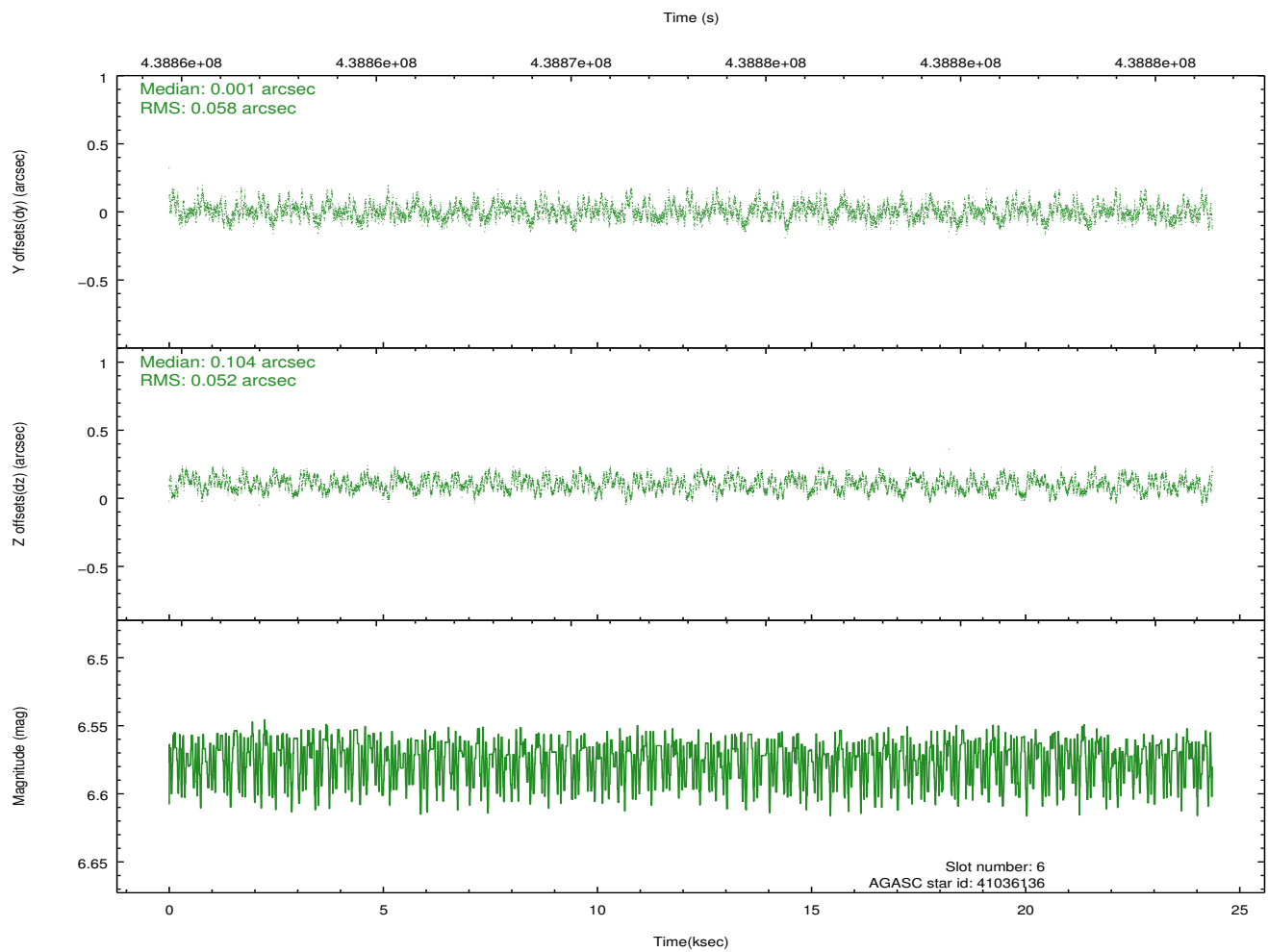
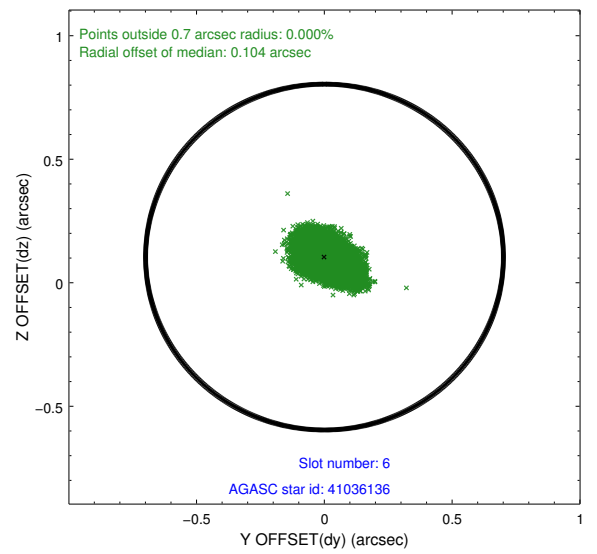
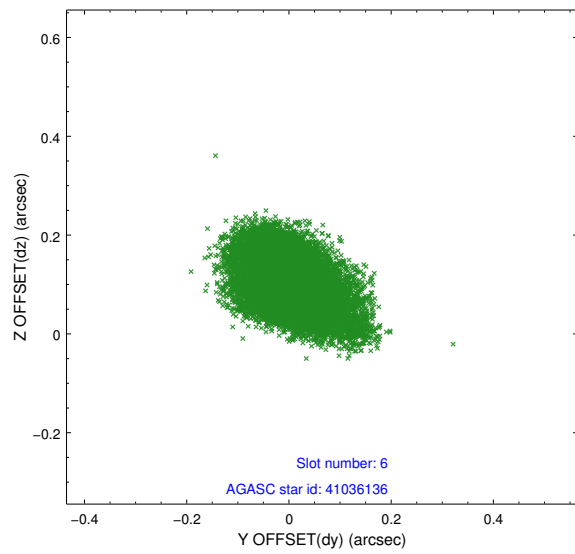
2.4.3 Slot 5



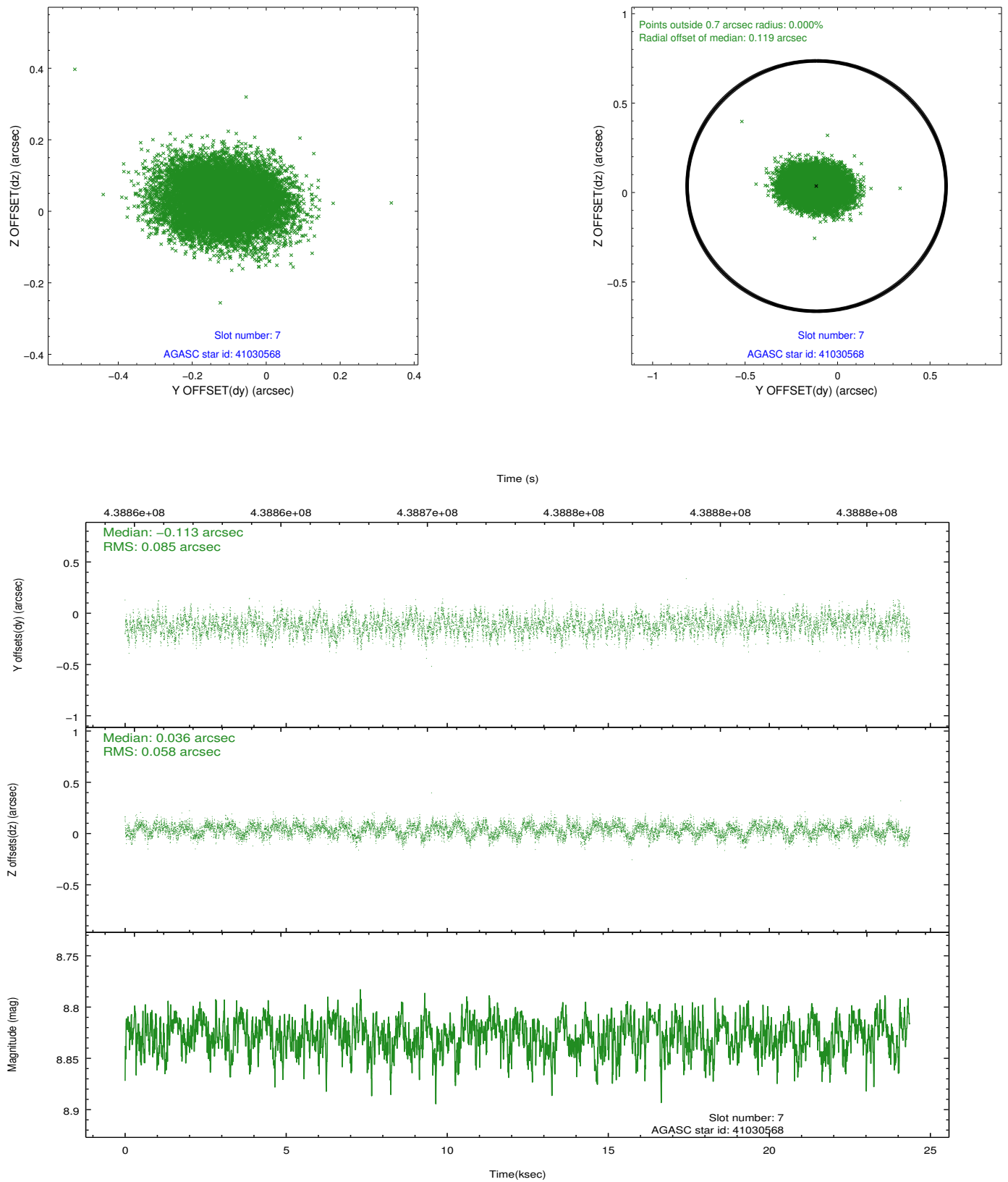
Time (s)



2.4.4 Slot 6

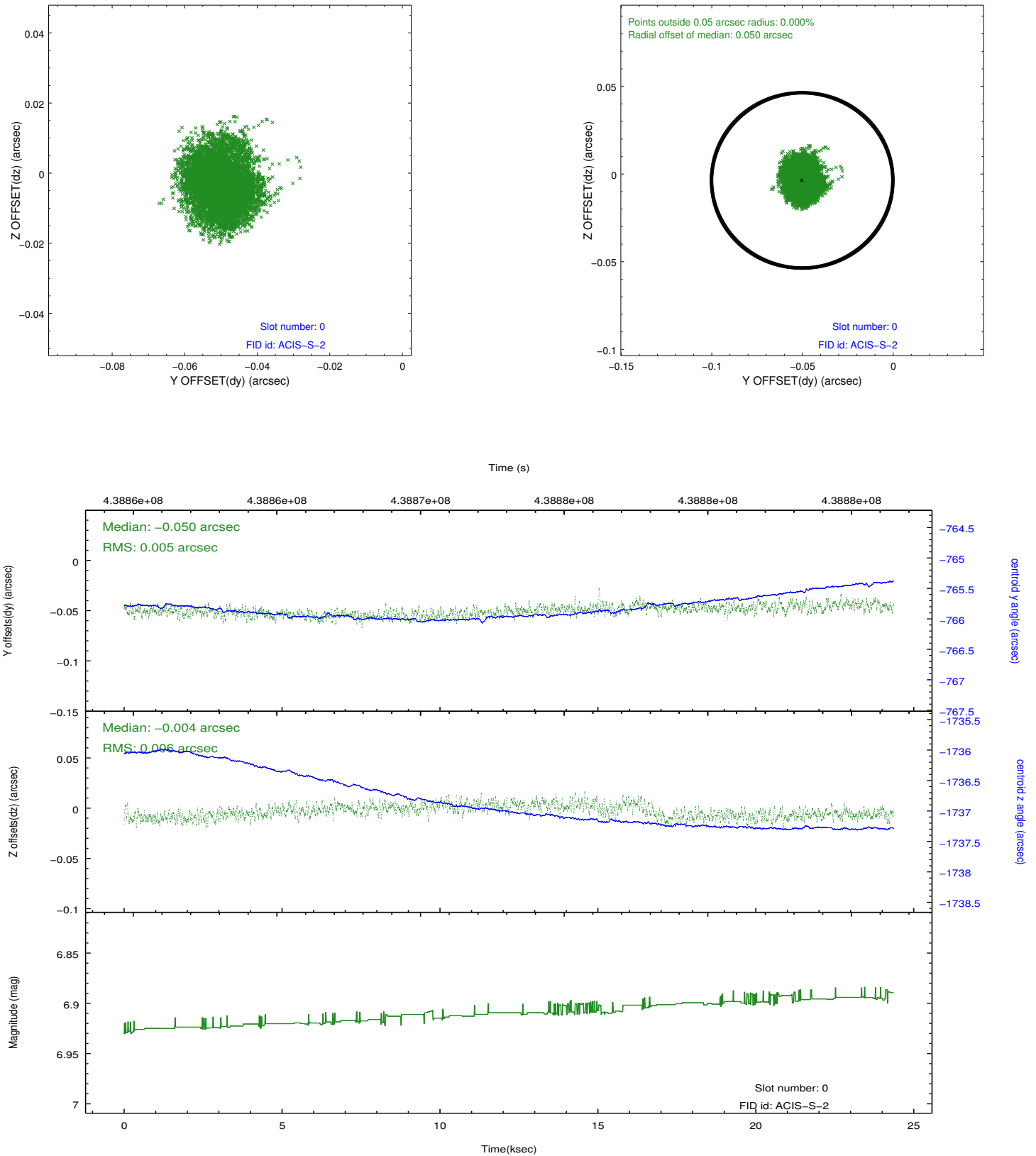


2.4.5 Slot 7

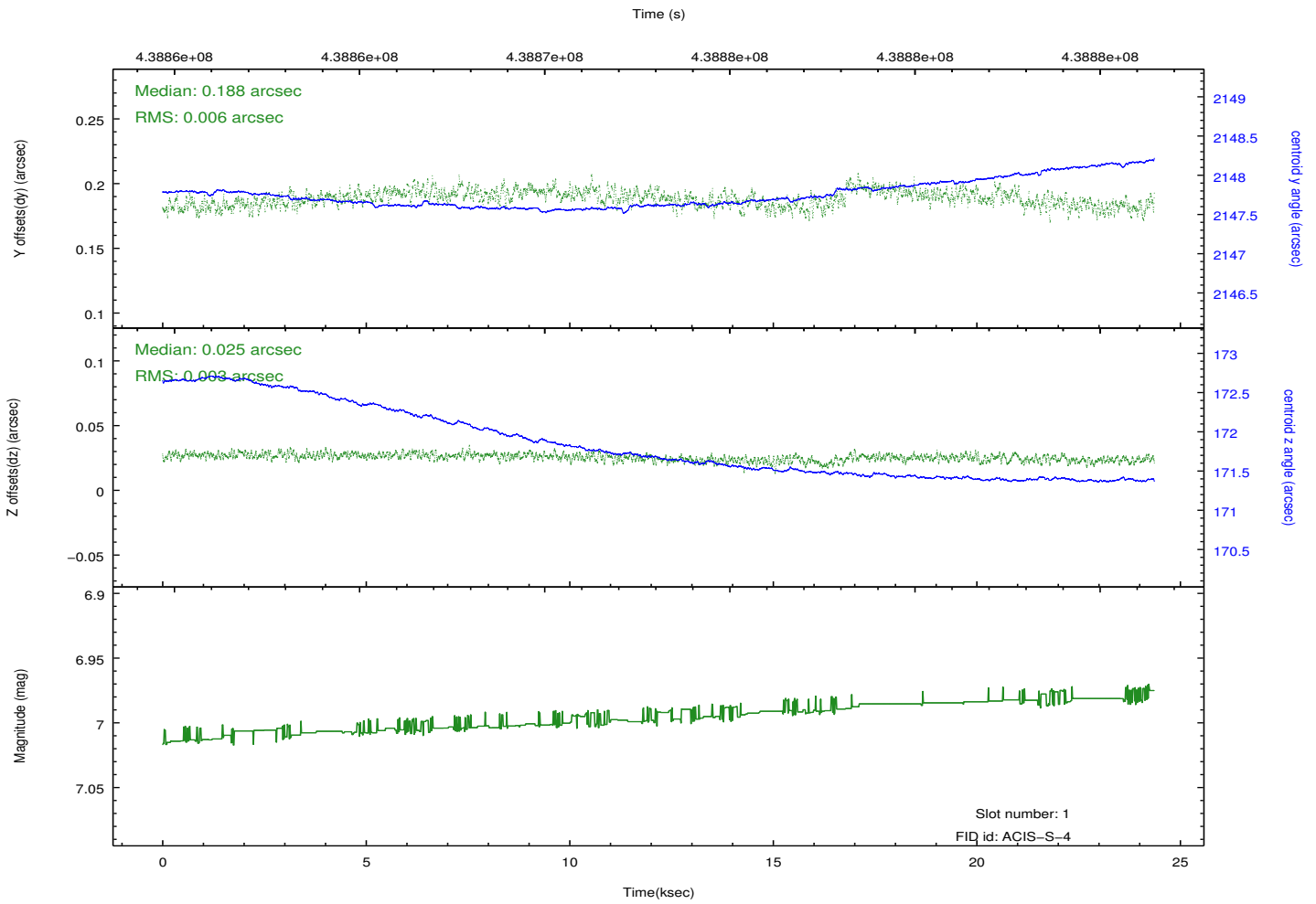
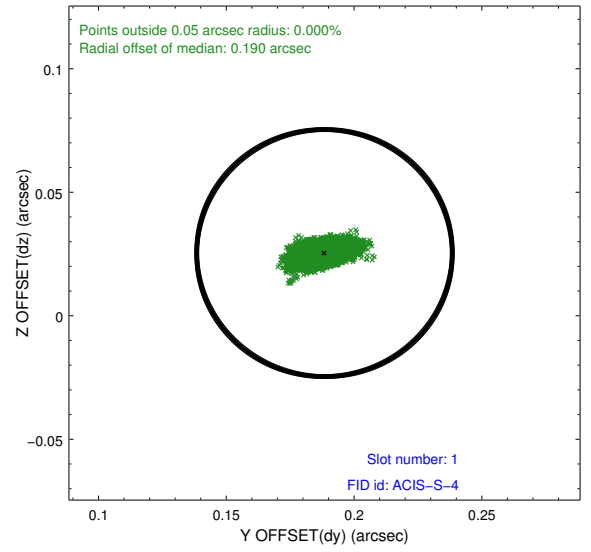
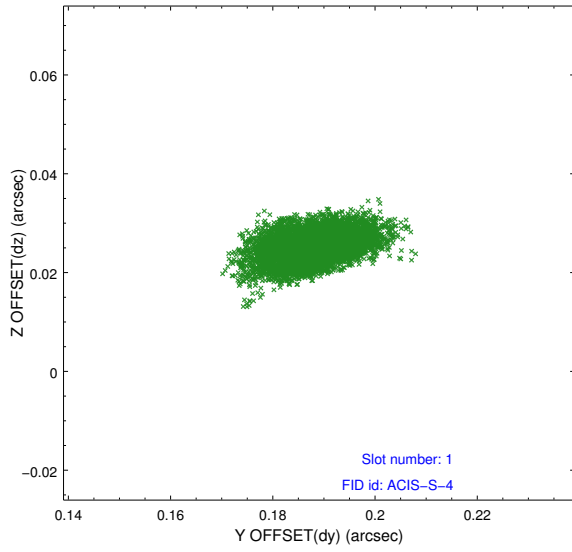


2.5 FID Slots

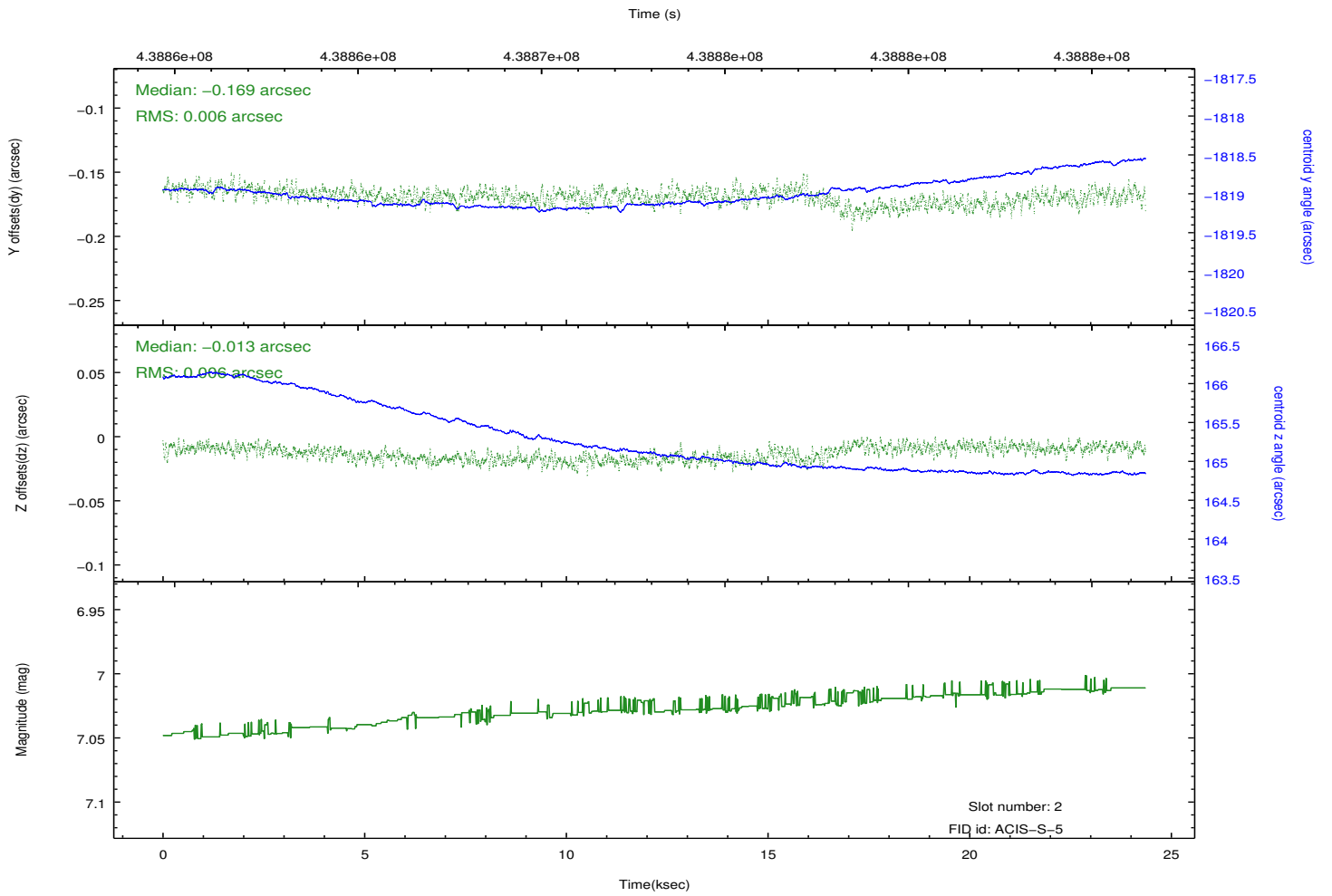
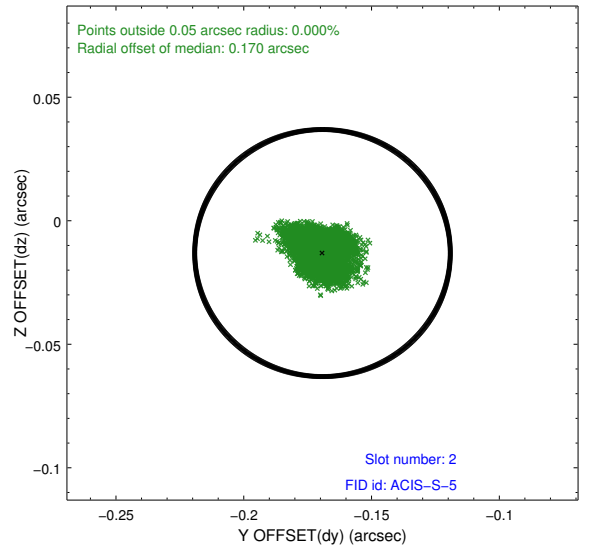
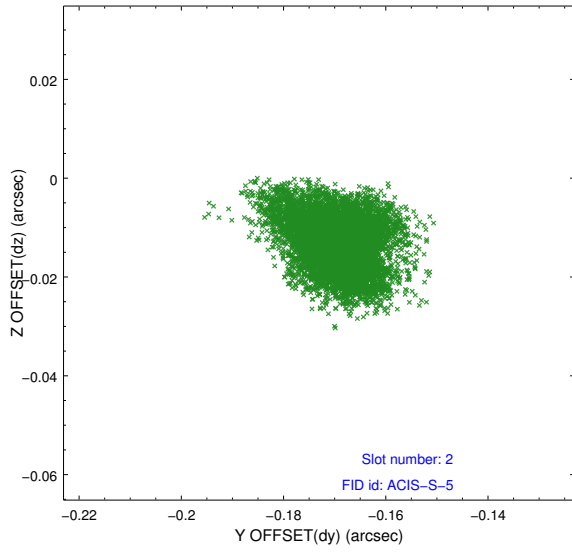
2.5.1 Slot 0



2.5.2 Slot 1



2.5.3 Slot 2



A Summary

A.1 Status

V&V Scientist	Beth Sundheim
V&V Date (YYYY-MM-DD)	2012.02.28
V&V Edition	1
V&V Disposition and Status	OK
V&V Charge Time	24.269900186658

A.2 Comments

Joint proposal with HST.