

V&V Reference Report

L2 ASCDS Version : 8.4.3

Observation 12832 - L2 Version 2
Chandra X-Ray Center

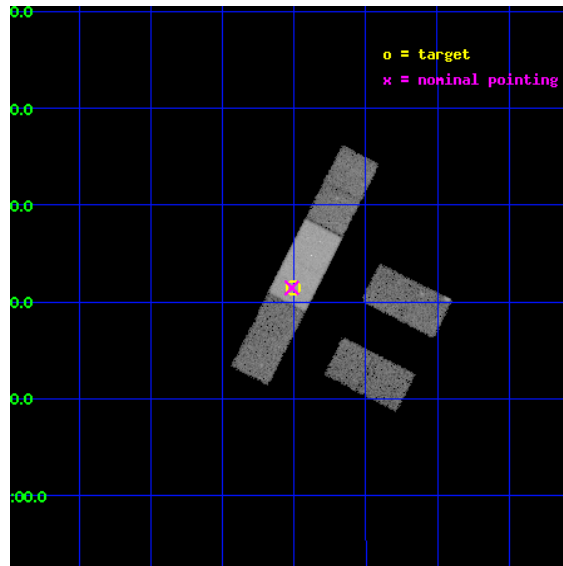
L2 Processing Date : Feb 29 2012

Contents

1	Front	2
2	OBI	3
2.1	OBI	3
2.1.1	Images	3
2.1.2	Bias	3
2.1.3	Parameters	4
2.1.4	Events	4
2.2	Compared Parameters	5
2.3	Aspect	6
2.4	Star Slots	9
2.4.1	Slot 3	9
2.4.2	Slot 4	10
2.4.3	Slot 5	11
2.4.4	Slot 6	12
2.4.5	Slot 7	13
2.5	FID Slots	14
2.5.1	Slot 0	14
2.5.2	Slot 1	15
2.5.3	Slot 2	16
A	Summary	17
A.1	Status	17
A.2	Comments	17

1 Front

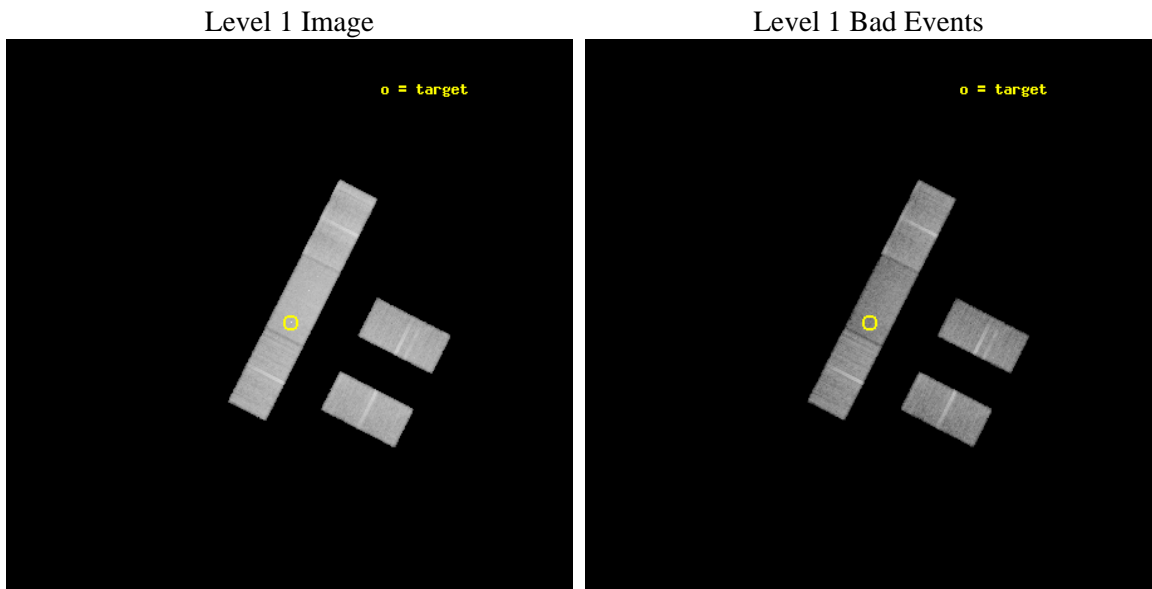
seq_num	702465	Sequence number
obs_id	12832	Observation id
title	Energy Dependent X-ray Microlensing	Proposal title
observer	Dr. Christopher Kochanek	Principal investigator
object	Q2237+0305	Source name
dtcycle	0	
cycle	P	events from which exps? Prim/Second/Both
ra_targ	340.12625	Observer's specified target RA [deg]
dec_targ	3.358	Observer's specified target Dec [deg]
ra_nom	340.12924875865	Nominal RA [deg]
dec_nom	3.3577229971969	Nominal Dec [deg]
roll_nom	296.99157737648	Nominal Roll [deg]
revision	2	Processing version of data
ontime	30506.499786139	Sum of GTIs [s]
livetime	29787.396979067	Livetime [s]
ontime2	30504.6555686	Sum of GTIs [s]
ontime3	30504.737678468	Sum of GTIs [s]
ontime6	30506.499786139	Sum of GTIs [s]
ontime7	30506.499786139	Sum of GTIs [s]
ontime8	30506.437628686	Sum of GTIs [s]
l2events	101328	Number of level 2 events



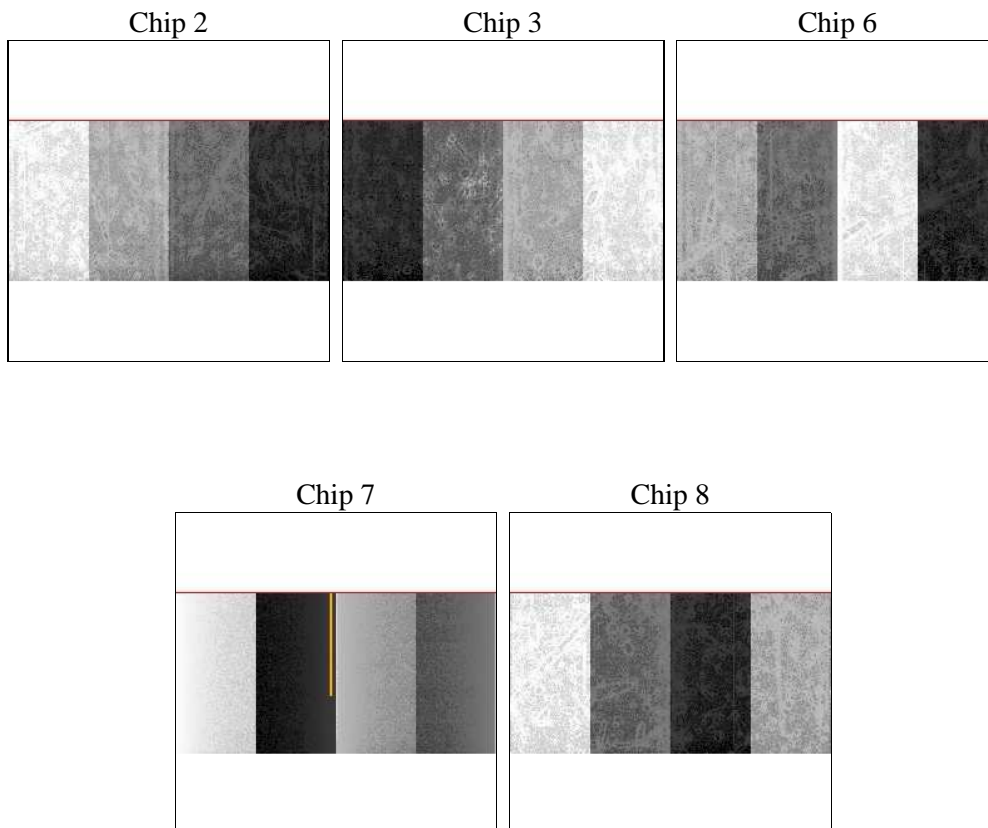
2 OBI

2.1 OBI

2.1.1 Images



2.1.2 Bias



2.1.3 Parameters

obi_num	0	Obi number	sched_exp_time	30440.000000	[s] Scheduled observation exposure time
ascdsver	8.4.3	Processing system revision	ontime	30506.499786139	Sum of GTIs [s]
caldbver	4.4.8	 	ontime2	30504.6555686	Sum of GTIs [s]
date	2012-02-29T13:20:13	Date and time of file creation	ontime3	30504.737678468	Sum of GTIs [s]
revision	2	Processing version of data	ontime6	30506.499786139	Sum of GTIs [s]
			ontime7	30506.499786139	Sum of GTIs [s]
			ontime8	30506.437628686	Sum of GTIs [s]
			l1events	587609	Number of level 1 events

2.1.4 Events

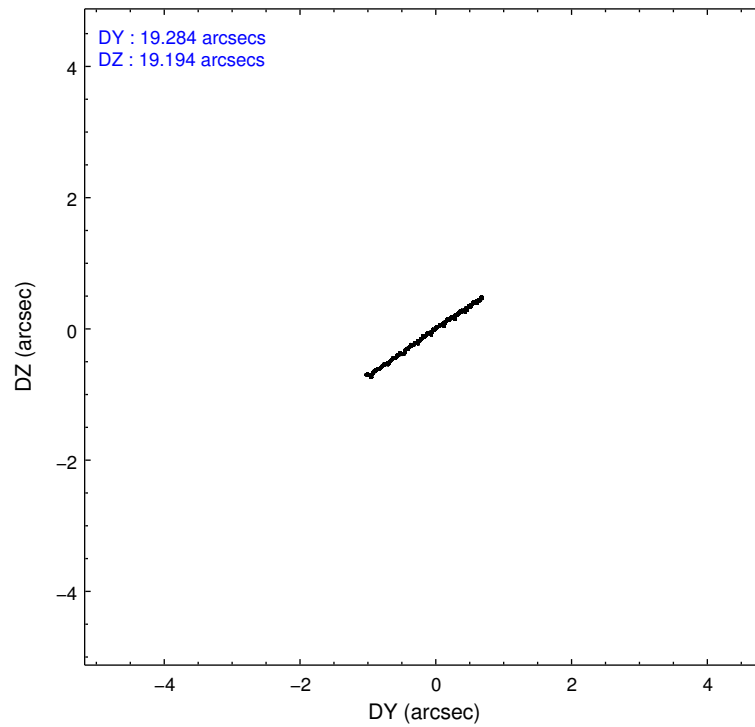
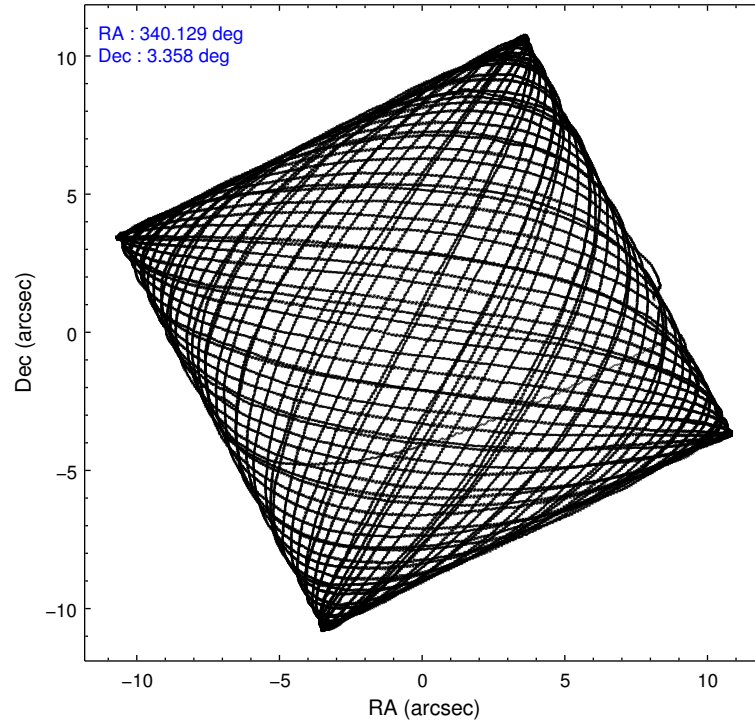
	ccd 2	ccd 3	ccd 6	ccd 7	ccd 8
level 1 events	101760	100220	111248	131774	142607
rejected events	90439	88670	98945	71090	104867
rejected %	88%	88%	88%	53%	73%

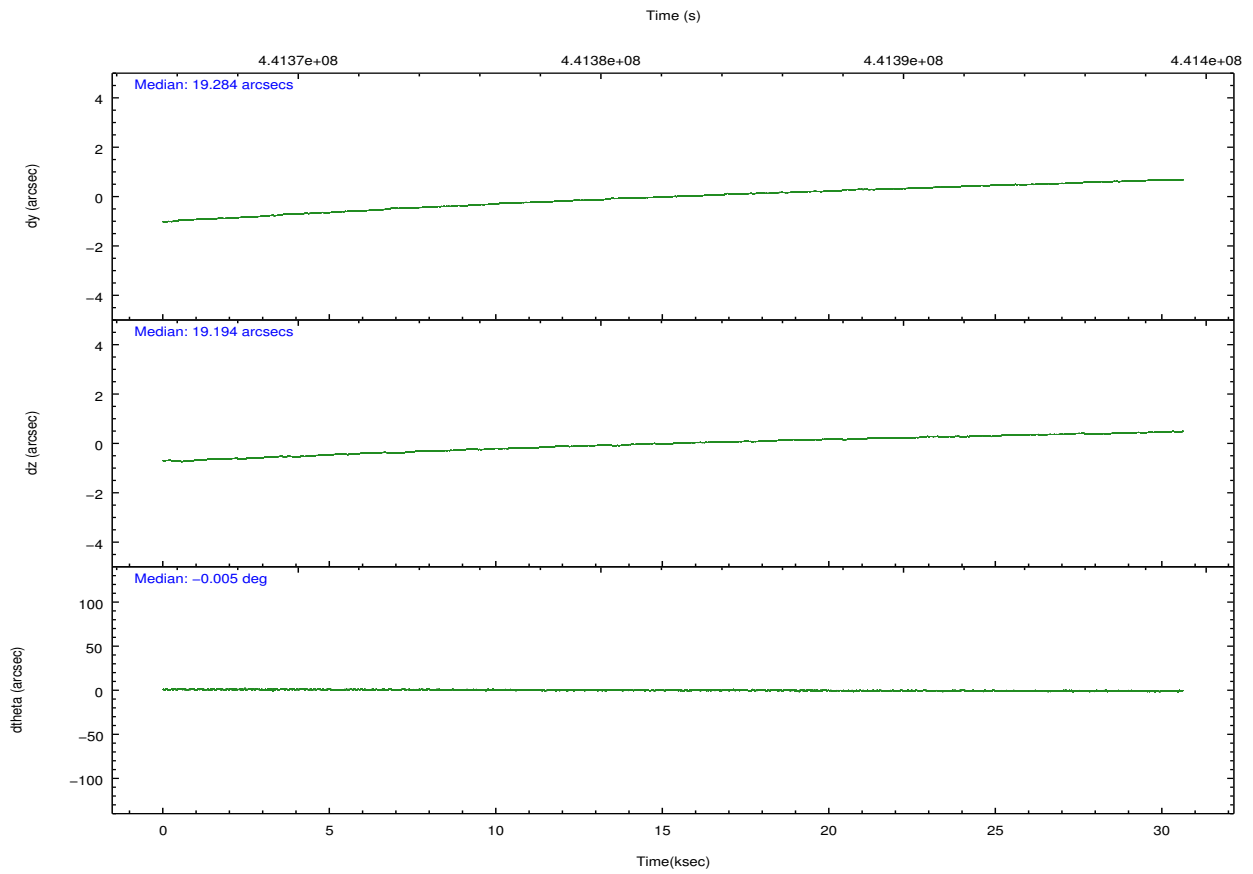
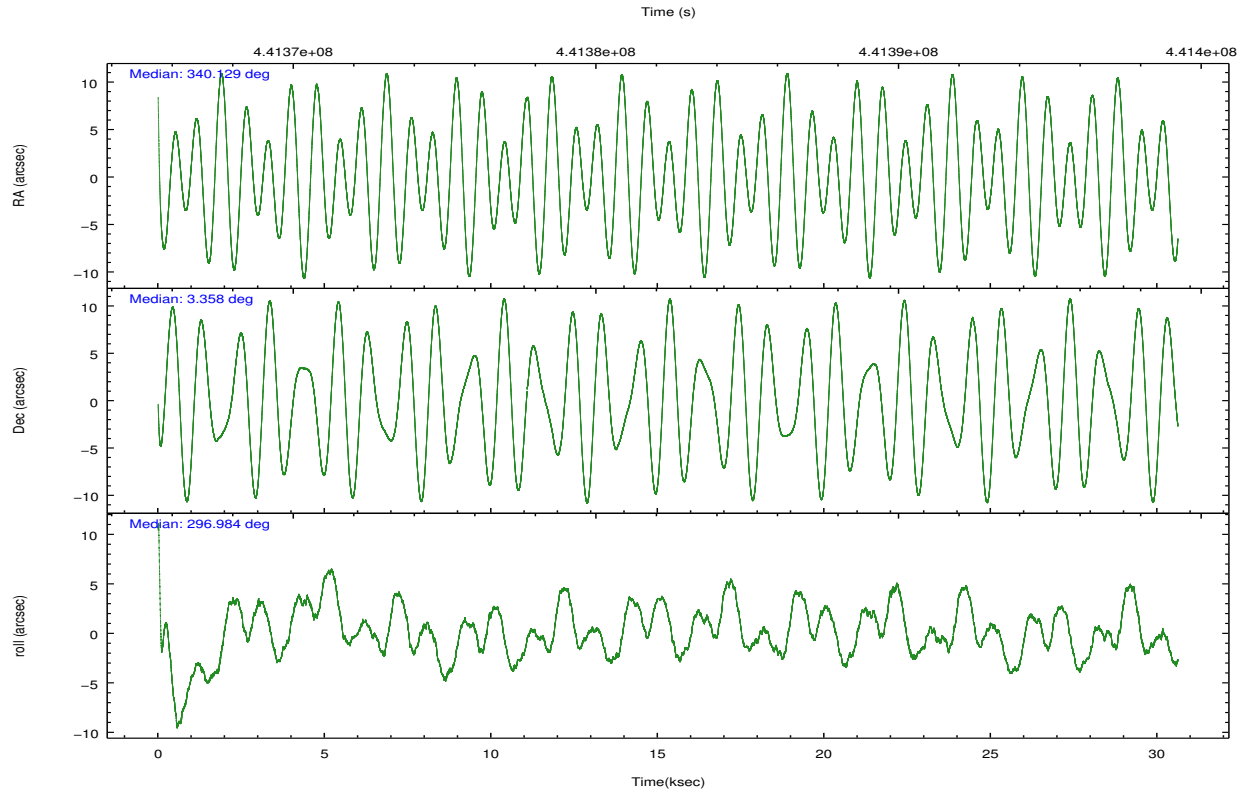
	ccd 2	ccd 3	ccd 6	ccd 7	ccd 8
grade 0 events	3721	3891	3955	6008	11033
	3%	3%	3%	4%	7%
grade 1 events	42	47	55	167	97
	0%	0%	0%	0%	0%
grade 2 events	2753	2501	2694	12732	8630
	2%	2%	2%	9%	6%
grade 3 events	1371	1448	1482	5971	4043
	1%	1%	1%	4%	2%
grade 4 events	1391	1480	1582	5858	3872
	1%	1%	1%	4%	2%
grade 5 events	4143	4906	4956	13959	7035
	4%	4%	4%	10%	4%
grade 6 events	2089	2231	2591	30120	10173
	2%	2%	2%	22%	7%
grade 7 events	86250	83716	93933	56959	97724
	84%	83%	84%	43%	68%

2.2 Compared Parameters

Parameter	Planned	Actual	Parameter	Planned	Actual
Instrument	ACIS	ACIS	Obspar format version number	7	7
Detector	ACIS-23678	ACIS-23678	Obspar file type	PREDICTED	ACTUAL
Grating	NONE	NONE	Obspar update status	NONE	UPDATED
Data mode	VFAINT	VFAINT	CCD I0 on	N	N
Observation mode	POINTING	POINTING	CCD I1 on	N	N
[deg] Pointing RA	340.106095	340.1292487586493	CCD I2 on	O4	Y
[deg] Pointing Dec	3.372296	3.357722997196936	CCD I3 on	O3	Y
[deg] Pointing Roll	296.836308	296.9915773764785	CCD S0 on	N	N
[mm] SIM focus pos	-0.684267	-0.6828225247311905	CCD S1 on	N	N
[mm] SIM defocus	0	0.001444936568705701	CCD S2 on	O1	Y
[mm] SIM translation stage pos	-190.132523	-190.1425803651734	CCD S3 on	Y	Y
[mm] SIM translation stage offset	0	0.01005778216563158	CCD S4 on	O2	Y
[s] Observation start time (MET)	441367266.184000	441366354.61236	CCD S5 on	N	N
Observation start date	2011-12-27T10:00:00	2011-12-27T09:45:54	Number of optional ACIS chips dropped	0	0
[s] Observation end time (MET)	441397706.184000	441398628.27656	On-chip summing requested	N	N
Observation end date	2011-12-27T18:27:20	2011-12-27T18:43:48	Subarray requested	CUSTOM	1/2
Read mode	TIMED	TIMED	Subarray start row	257	257
			Subarray row count	512	512
			Alternating exposures requested	N	N
			[s] Primary exposure time	0.000000	1.7

2.3 Aspect



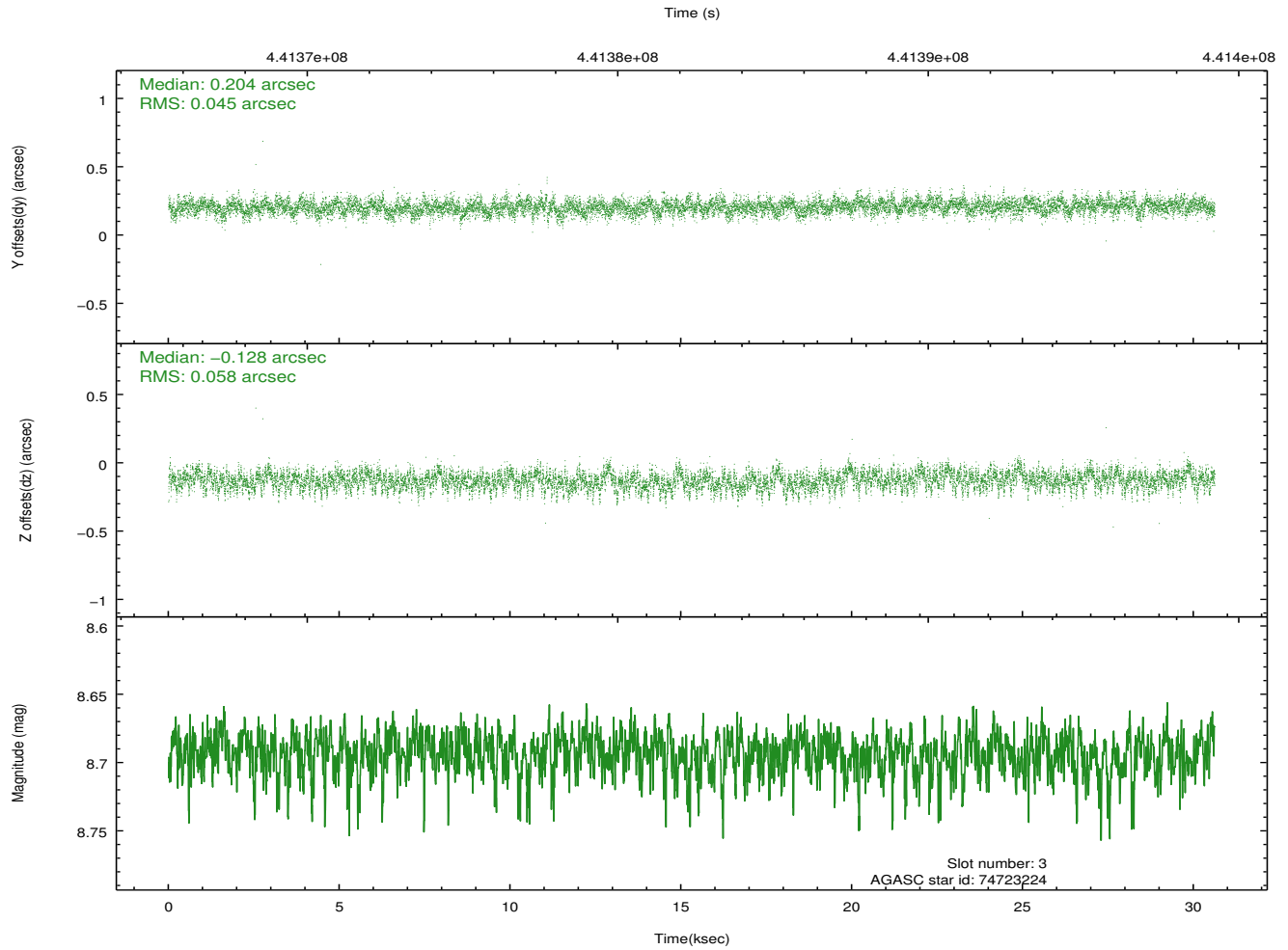
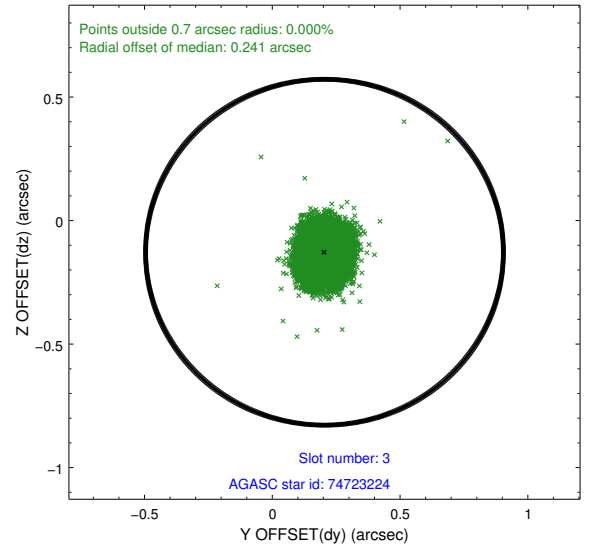
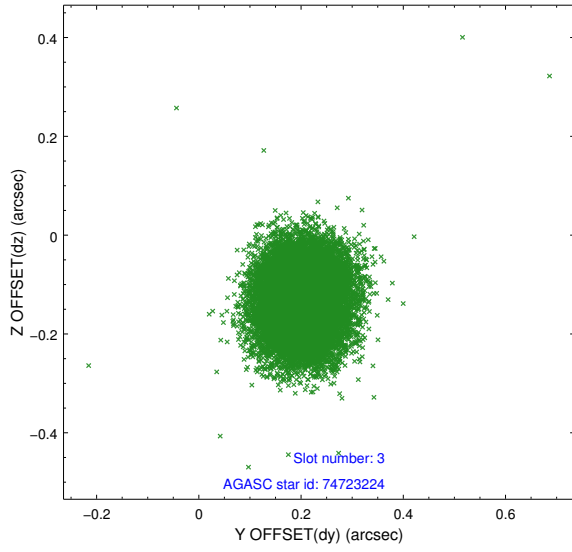


Slot Statistics

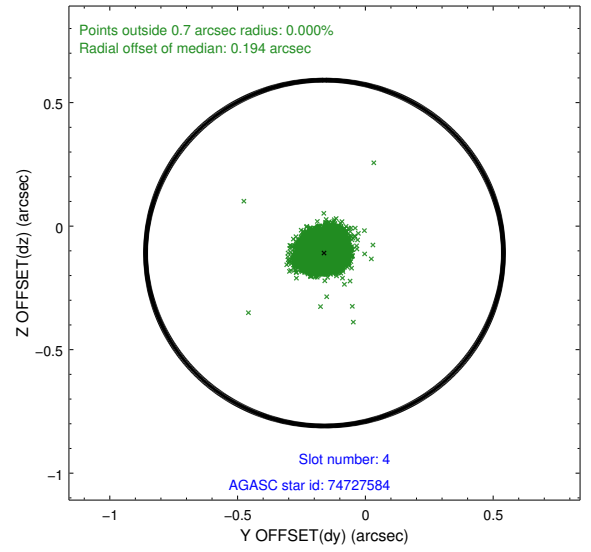
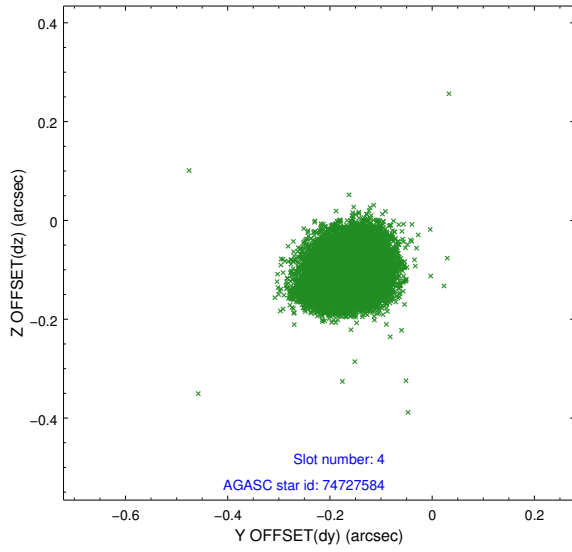
slot	status	id	mag	n_pts	med_dy	med_dz	dr1	dr2	ra	dec	mean_y	mean_z
0	FID	ACIS-S-1	6.99	7469	0.036	0.004	0.027	0.037	0.000000	0.000000	923.74	-1736.22
1	FID	ACIS-S-4	6.99	7469	0.195	-0.014	0.017	0.038	0.000000	0.000000	2141.35	167.84
2	FID	ACIS-S-5	7.02	7469	-0.261	0.025	0.021	0.033	0.000000	0.000000	-1825.32	161.57
3	GUIDE	74723224	8.69	14924	0.204	-0.128	0.078	0.126	339.594650	3.574222	-1477.90	-1311.26
4	GUIDE	74727584	7.05	14938	-0.160	-0.109	0.059	0.093	339.633744	3.463732	-1060.04	-1365.70
5	GUIDE	74842128	8.53	14931	-0.059	-0.045	0.079	0.127	340.118134	3.132788	789.28	-350.59
6	GUIDE	74854992	8.27	14935	-0.130	-0.024	0.060	0.096	340.342808	3.603730	-359.28	1135.03
7	GUIDE	74855640	8.85	14931	0.146	0.306	0.076	0.125	340.341123	3.746937	-822.07	1362.97

2.4 Star Slots

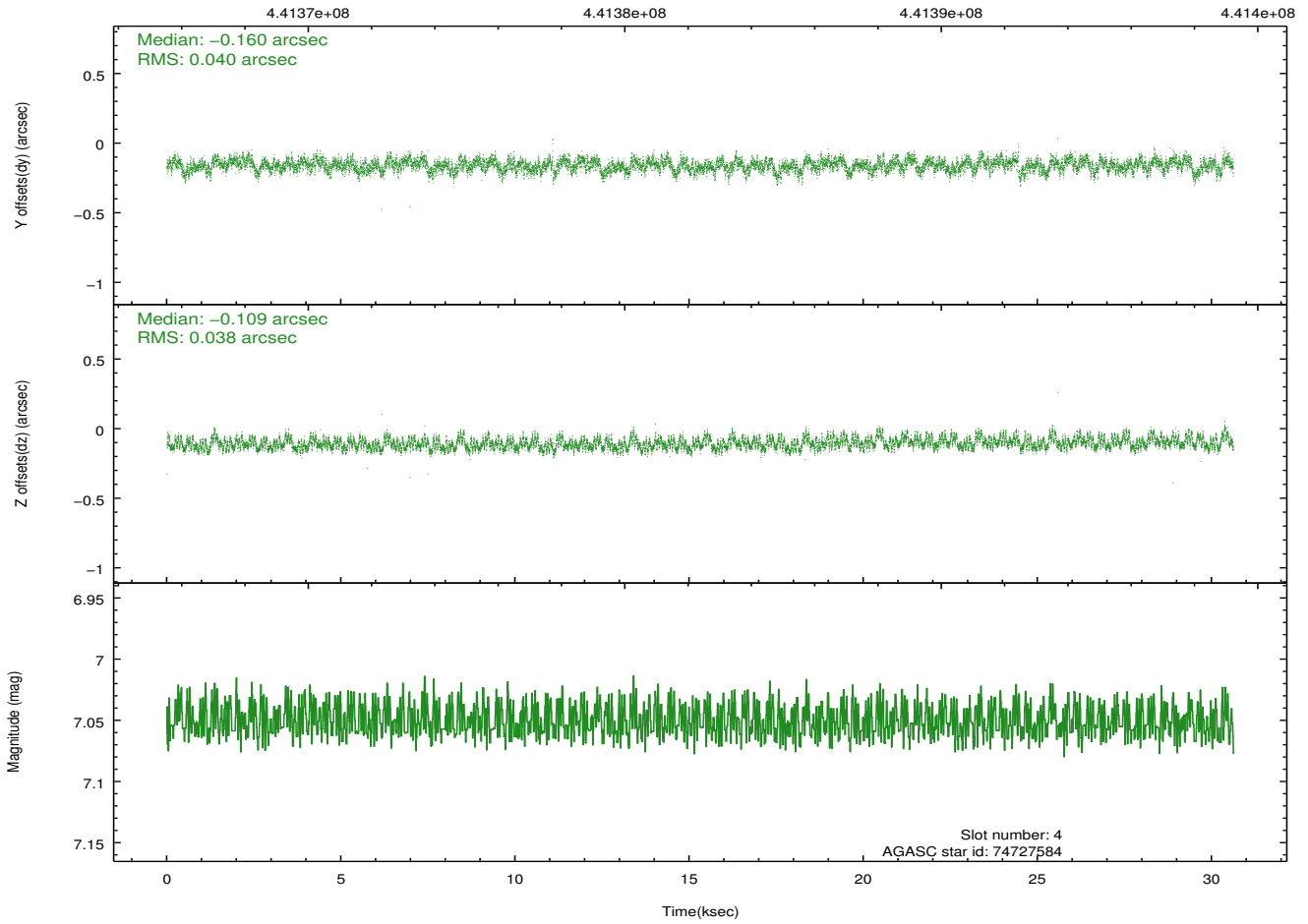
2.4.1 Slot 3



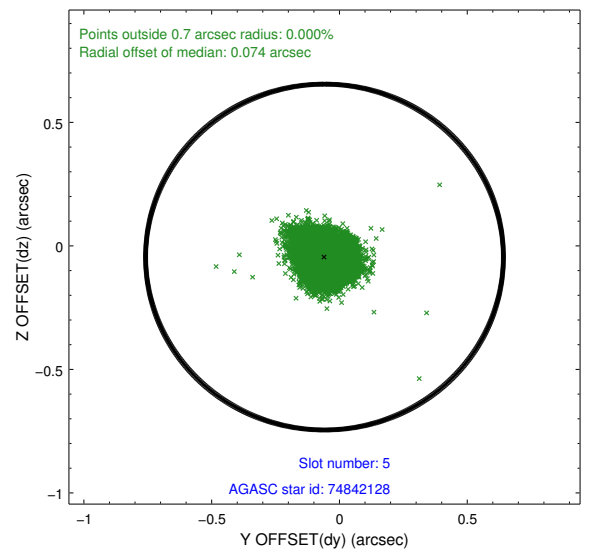
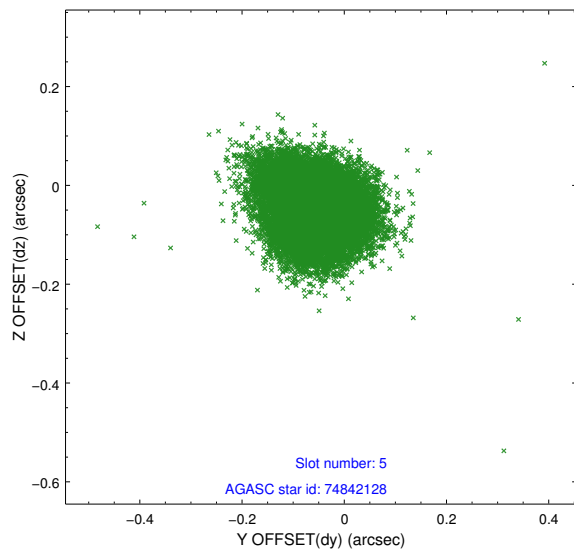
2.4.2 Slot 4



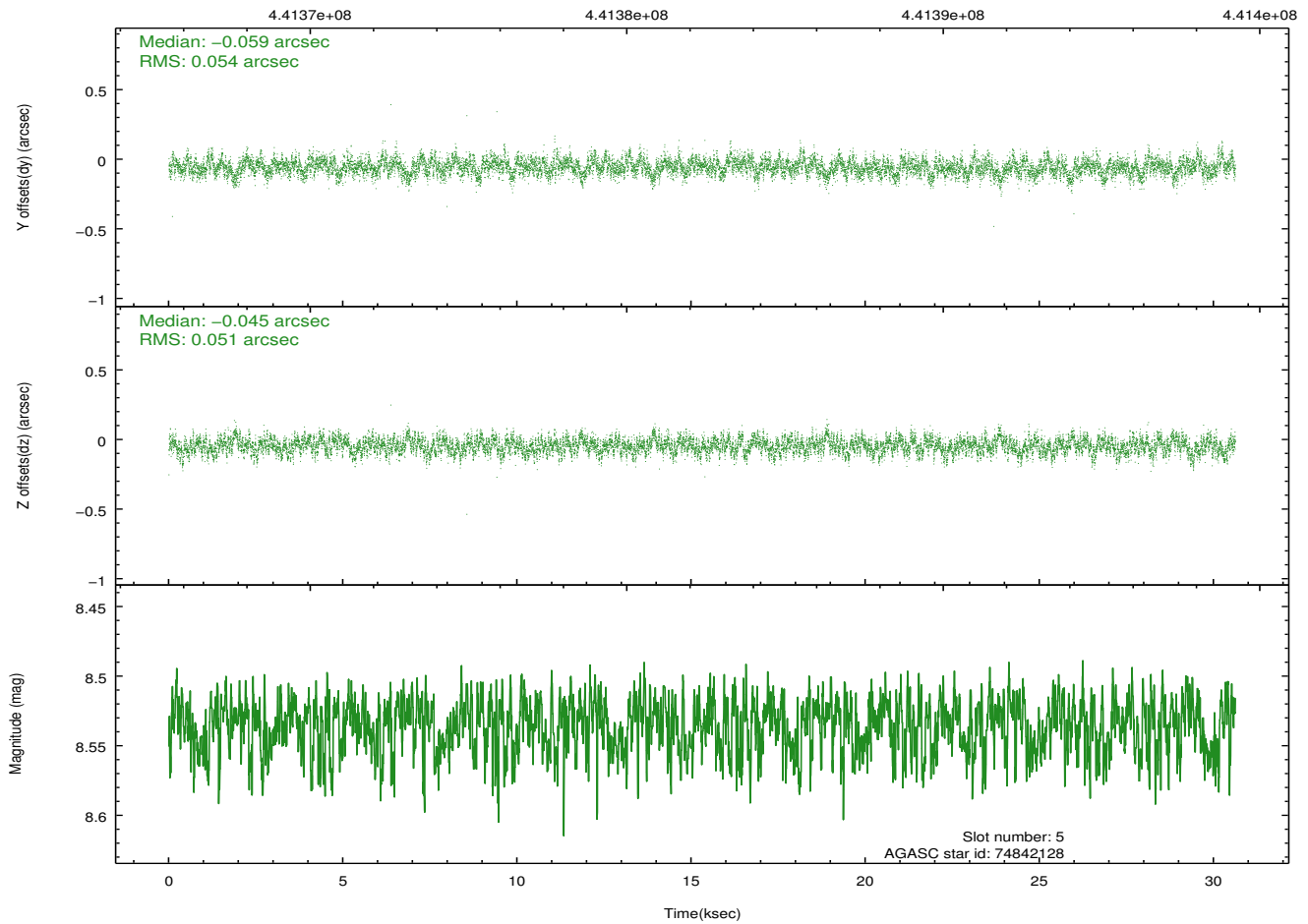
Time (s)



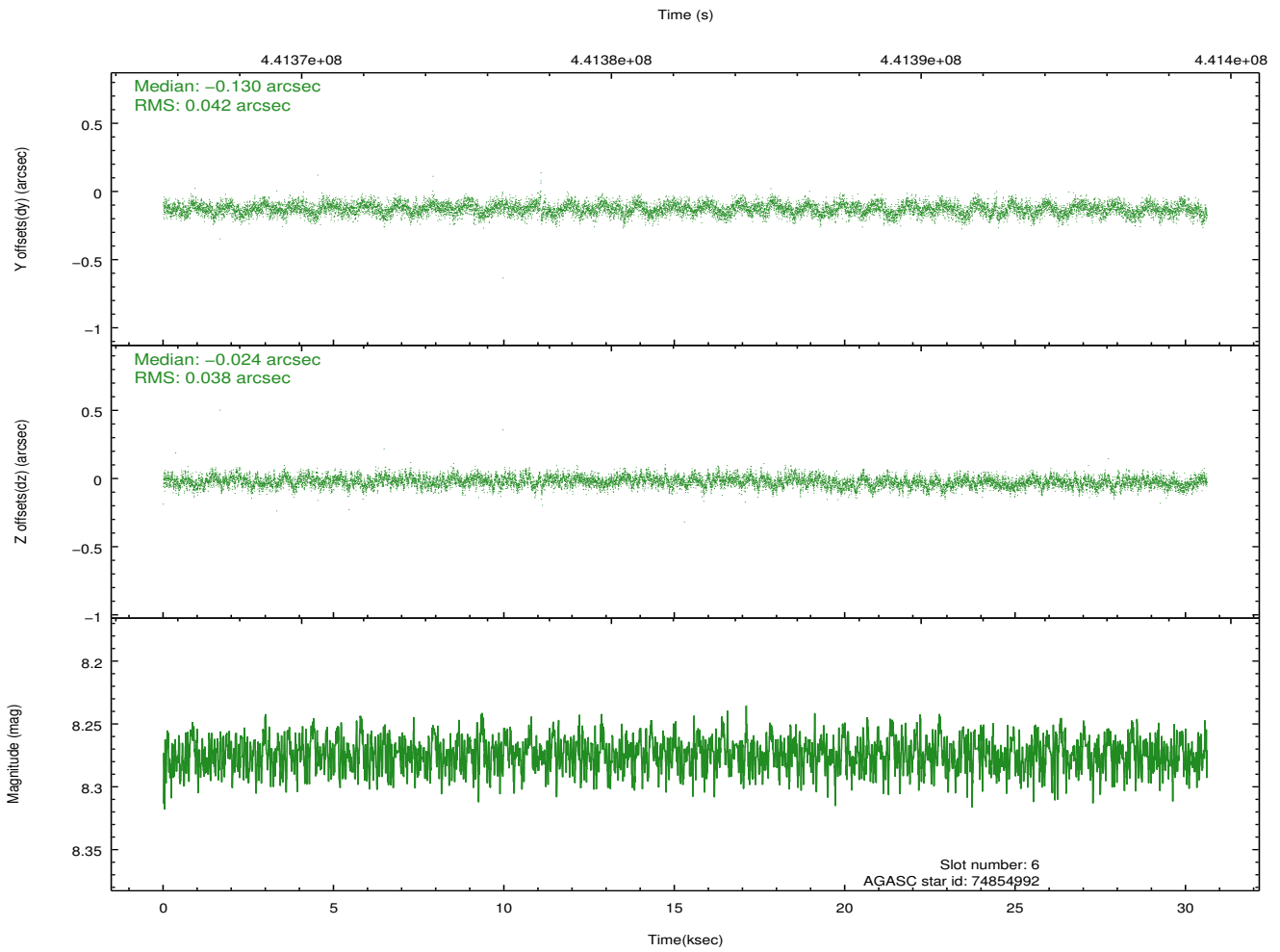
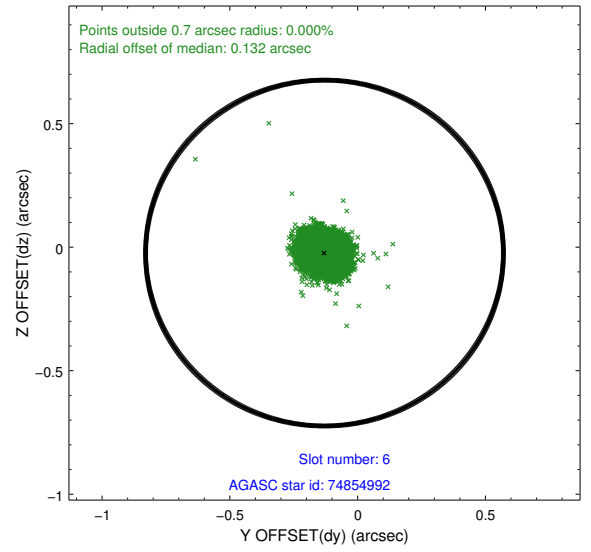
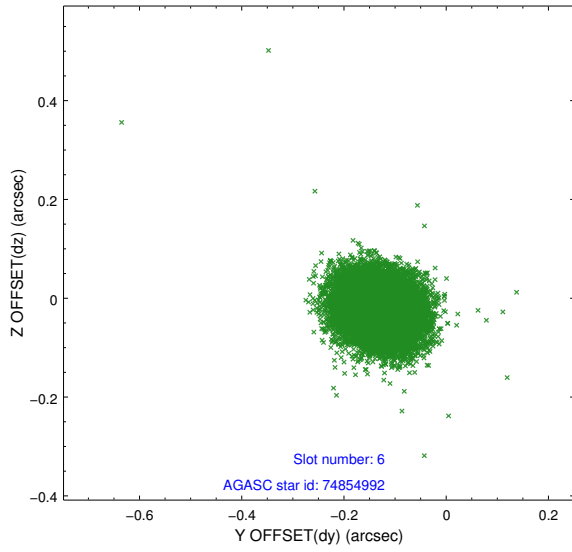
2.4.3 Slot 5



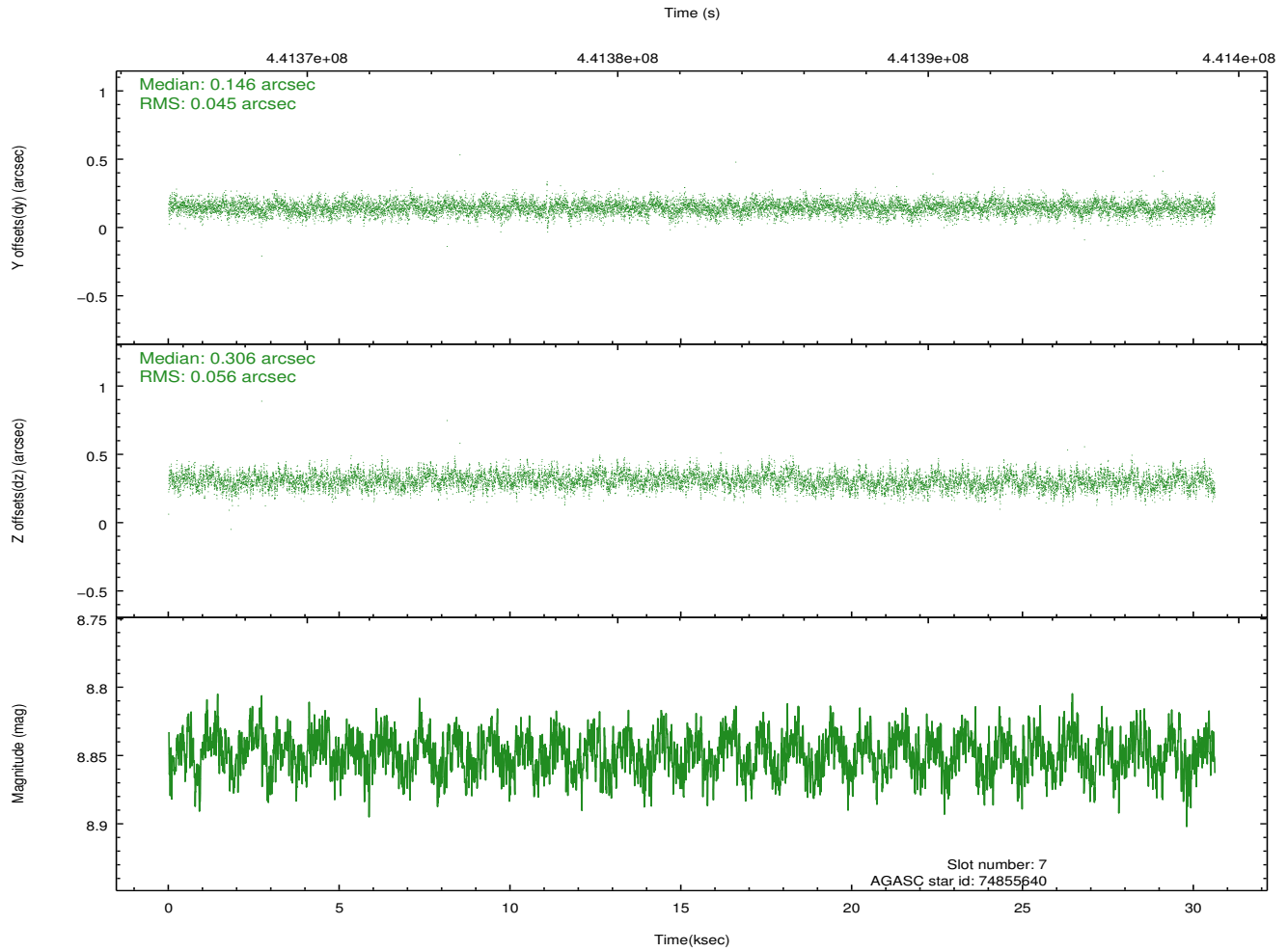
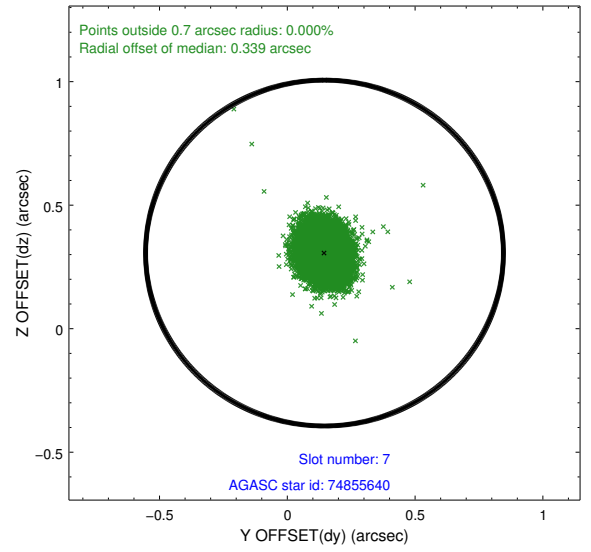
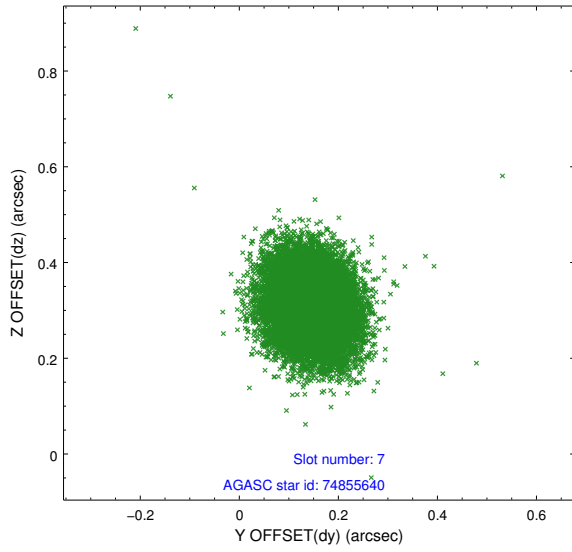
Time (s)



2.4.4 Slot 6

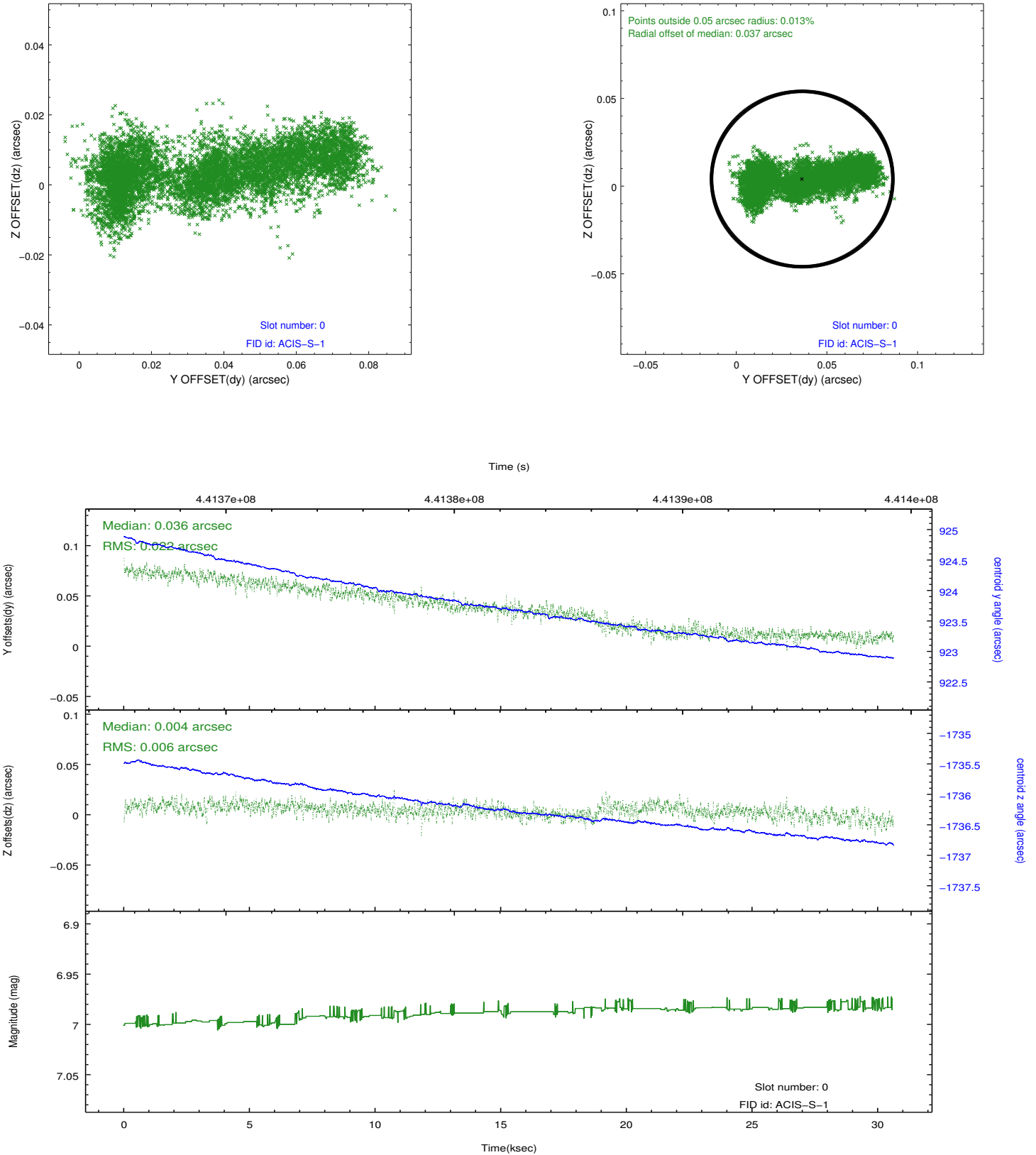


2.4.5 Slot 7

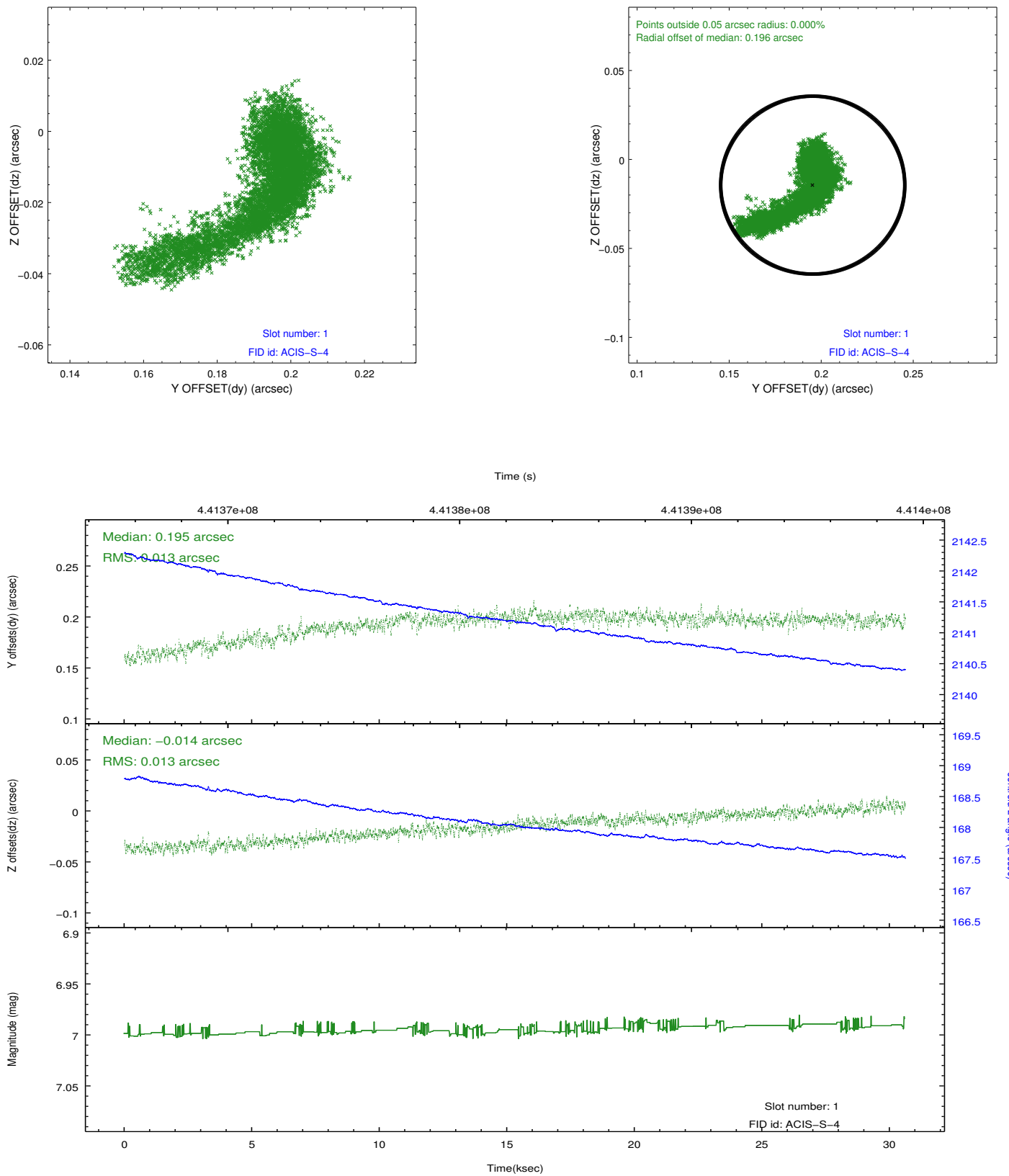


2.5 FID Slots

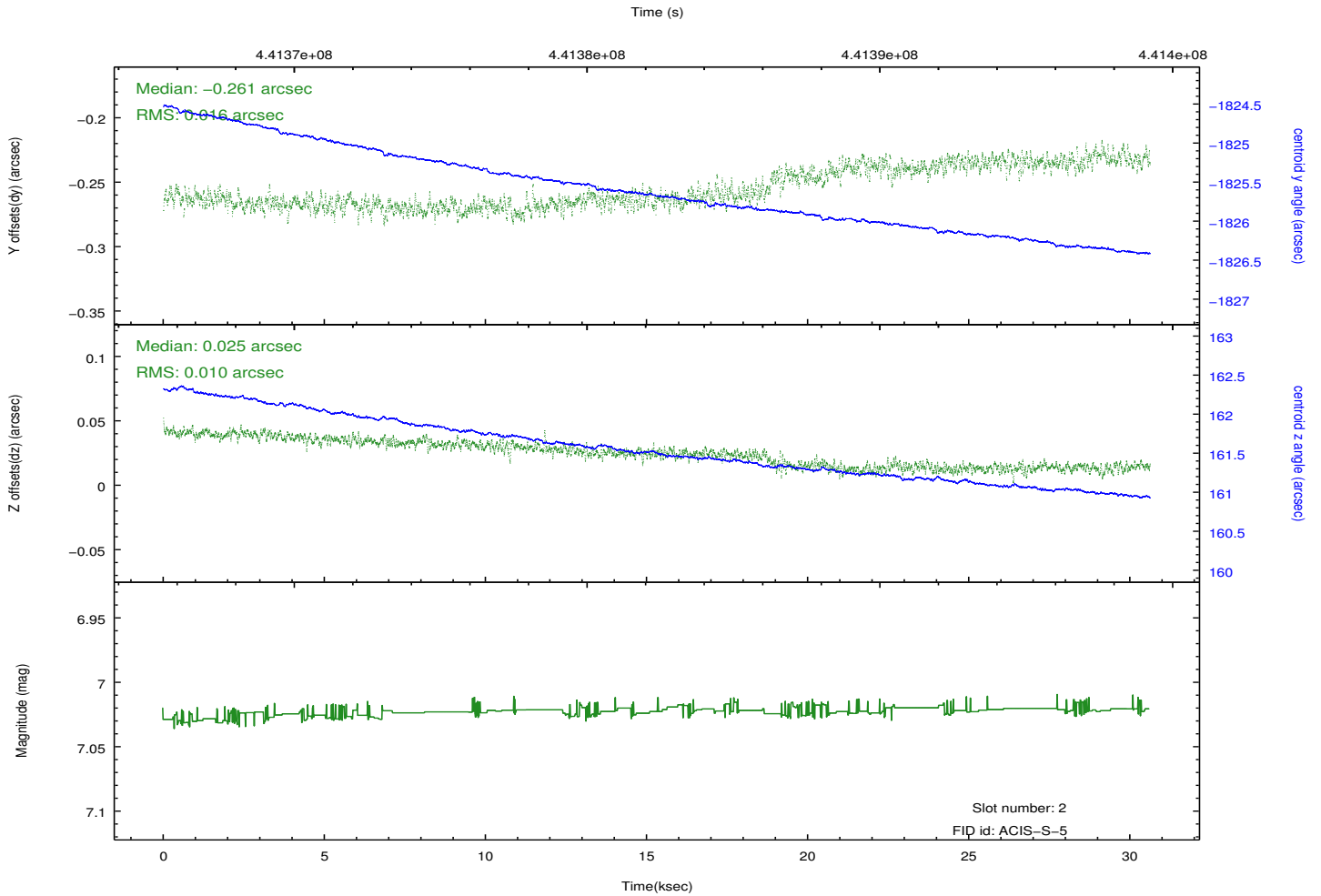
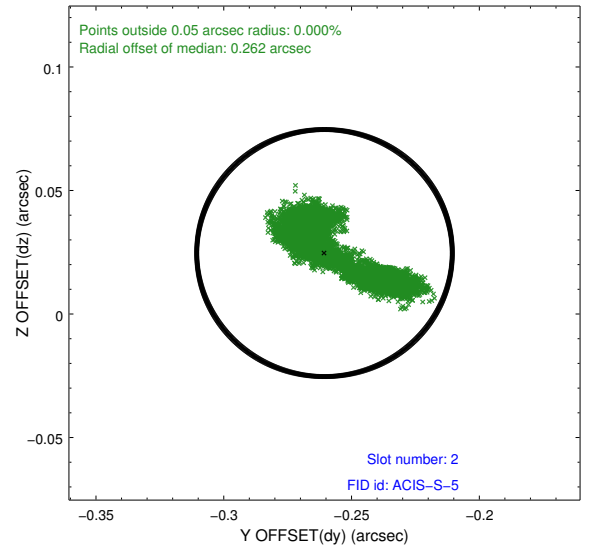
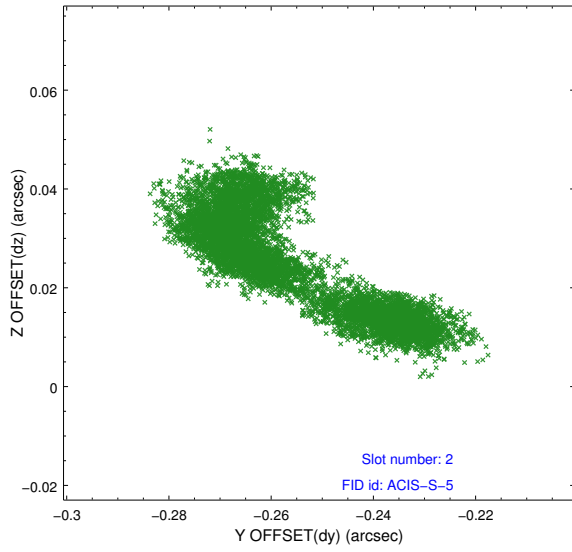
2.5.1 Slot 0



2.5.2 Slot 1



2.5.3 Slot 2



A Summary

A.1 Status

V&V Scientist	Beth Sundheim
V&V Date (YYYY-MM-DD)	2012.02.29
V&V Edition	1
V&V Disposition and Status	OK
V&V Charge Time	30.506499786139

A.2 Comments