

V&V Reference Report

L2 ASCDS Version : 8.4.3

Observation 12892 - L2 Version 2
Chandra X-Ray Center

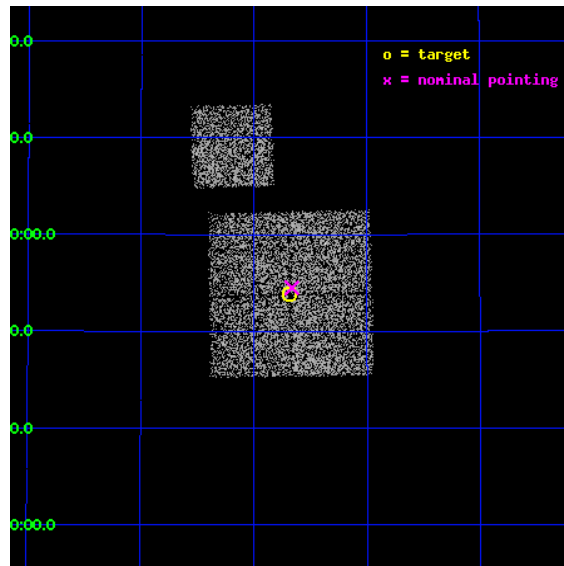
L2 Processing Date : Mar 2 2012

Contents

1	Front	2
2	OBI	3
2.1	OBI	3
2.1.1	Images	3
2.1.2	Bias	3
2.1.3	Parameters	4
2.1.4	Events	4
2.2	Compared Parameters	5
2.3	Aspect	6
2.4	Star Slots	9
2.4.1	Slot 3	9
2.4.2	Slot 4	10
2.4.3	Slot 5	11
2.4.4	Slot 6	12
2.4.5	Slot 7	13
2.5	FID Slots	14
2.5.1	Slot 0	14
2.5.2	Slot 1	15
2.5.3	Slot 2	16
A	Summary	17
A.1	Status	17
A.2	Comments	17

1 Front

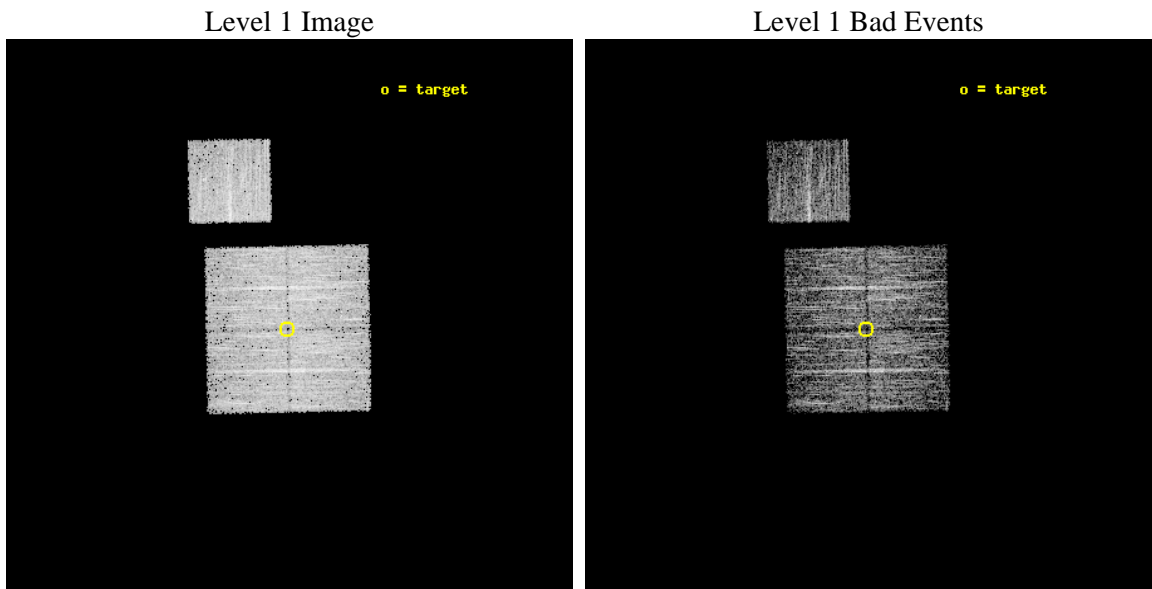
seq_num	801029	Sequence number
obs_id	12892	Observation id
title	The Outer Limits of Clusters with Chandra and Suzaku	Proposal titl
observer	Dr. Eric Miller	Principal investigator
object	A1914_Field2	Source name
dtycycle	0	
cycle	P	events from which exps? Prim/Second/Both
ra_targ	216.17165	Observer's specified target RA [deg]
dec_targ	37.896755	Observer's specified target Dec [deg]
ra_nom	216.16594770792	Nominal RA [deg]
dec_nom	37.908430748001	Nominal Dec [deg]
roll_nom	358.99984296521	Nominal Roll [deg]
revision	2	Processing version of data
ontime	5052.9590685368	Sum of GTIs [s]
livetime	4986.938438372	Livetime [s]
ontime0	5052.9590386152	Sum of GTIs [s]
ontime1	5056.1000388861	Sum of GTIs [s]
ontime2	5056.1000388861	Sum of GTIs [s]
ontime3	5052.9590685368	Sum of GTIs [s]
ontime6	5056.1000388861	Sum of GTIs [s]
l2events	15386	Number of level 2 events



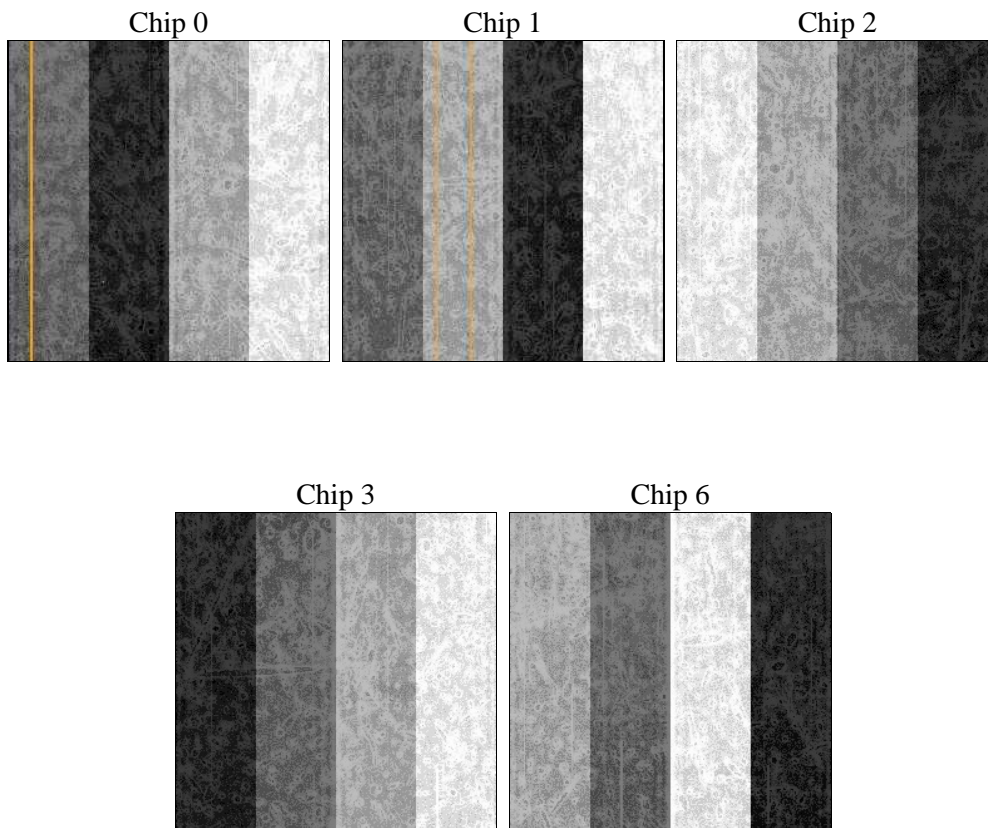
2 OBI

2.1 OBI

2.1.1 Images



2.1.2 Bias



2.1.3 Parameters

obi_num	0	Obi number	sched_exp_time	5000.000000	[s] Scheduled observation exposure time
ascdsver	8.4.3	Processing system revision	ontime	5052.9590685368	Sum of GTIs [s]
caldbver	4.4.8	 	ontime0	5052.9590386152	Sum of GTIs [s]
date	2012-03-02T14:43:12	Date and time of file creation	ontime1	5056.1000388861	Sum of GTIs [s]
revision	2	Processing version of data	ontime2	5056.1000388861	Sum of GTIs [s]
			ontime3	5052.9590685368	Sum of GTIs [s]
			ontime6	5056.1000388861	Sum of GTIs [s]
			l1events	149922	Number of level 1 events

2.1.4 Events

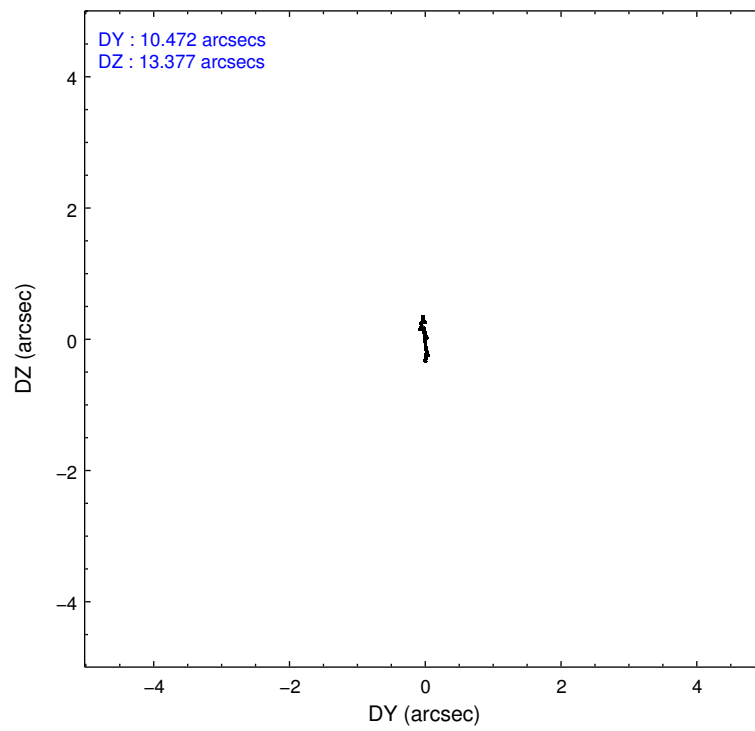
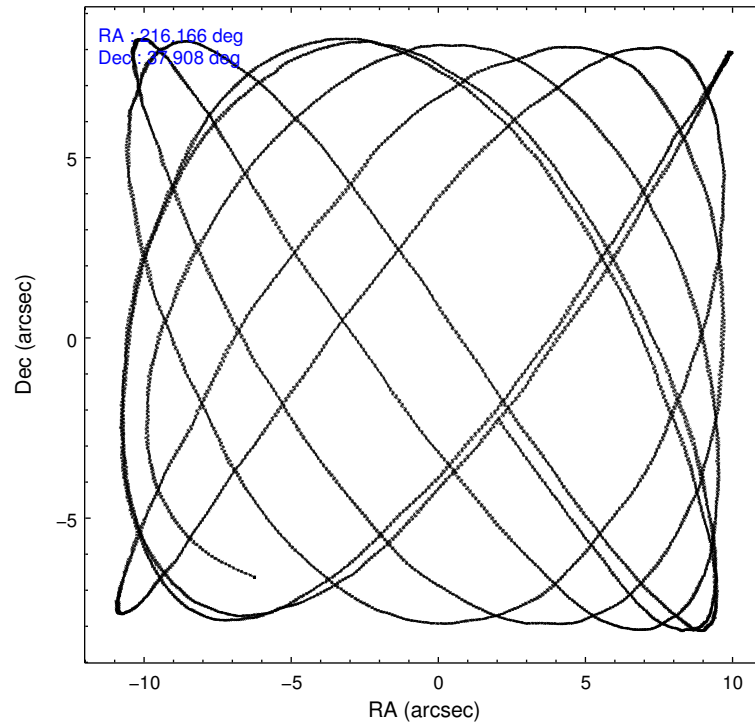
	ccd 0	ccd 1	ccd 2	ccd 3	ccd 6
level 1 events	27862	30274	30195	31215	30376
rejected events	24328	26172	26635	27679	26832
rejected %	87%	86%	88%	88%	88%

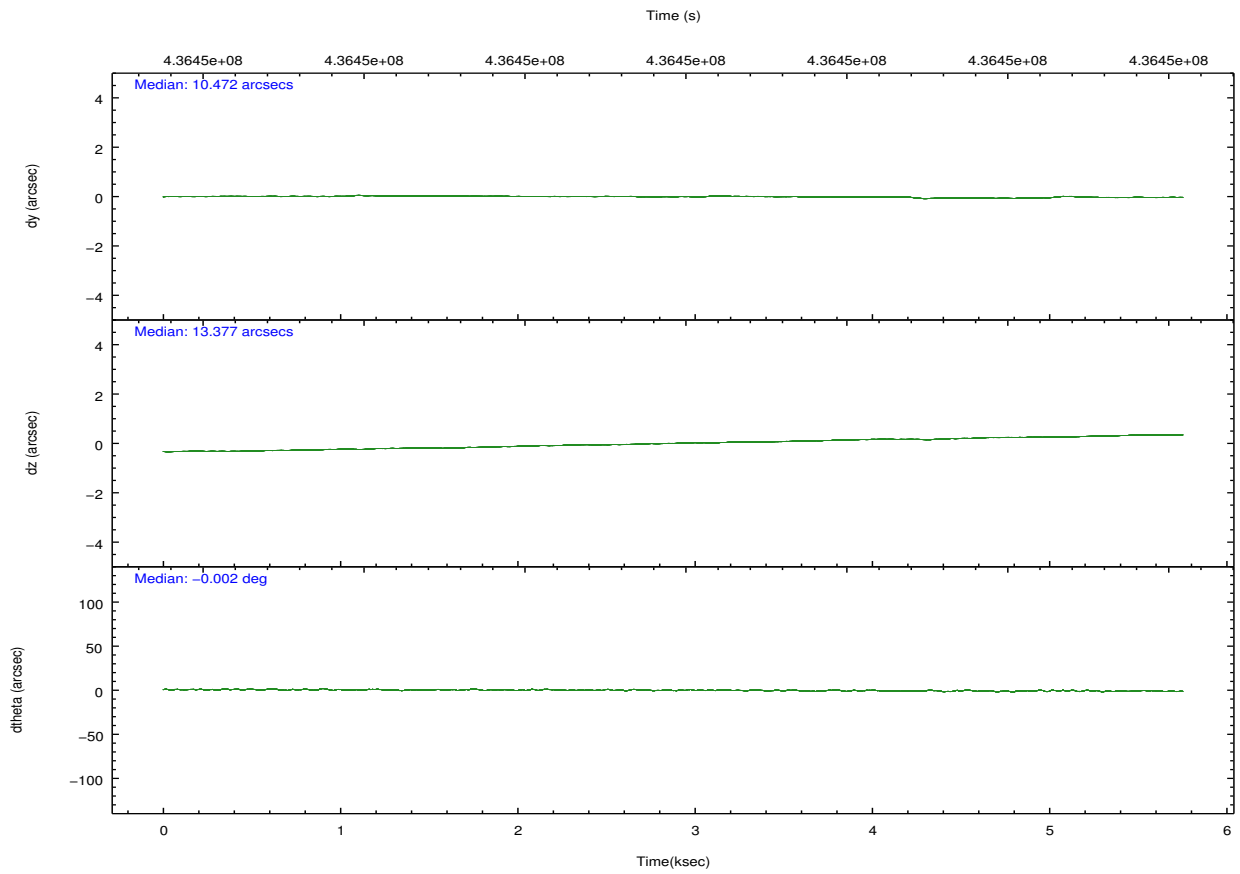
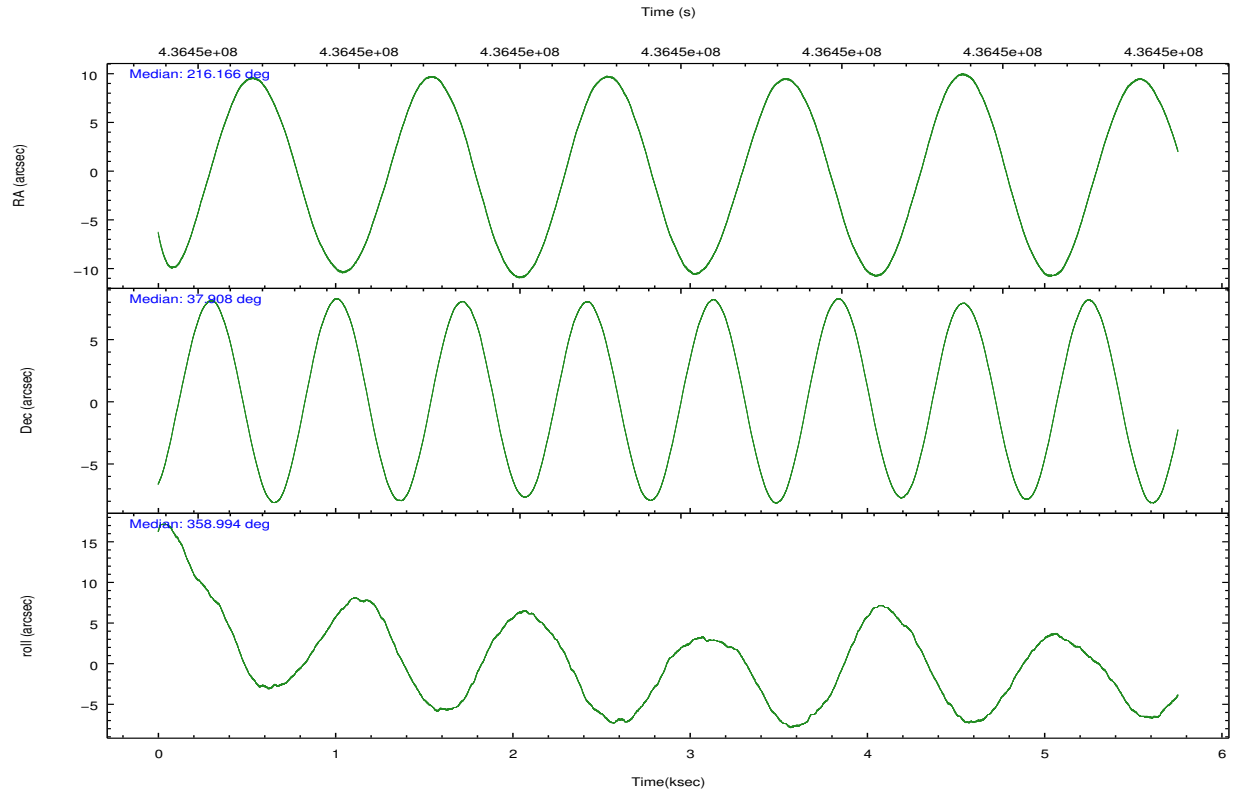
	ccd 0	ccd 1	ccd 2	ccd 3	ccd 6
grade 0 events	1267	1472	1348	1266	1294
	4%	4%	4%	4%	4%
grade 1 events	19	21	11	24	24
	0%	0%	0%	0%	0%
grade 2 events	811	952	808	806	748
	2%	3%	2%	2%	2%
grade 3 events	384	397	368	379	357
	1%	1%	1%	1%	1%
grade 4 events	339	436	371	373	388
	1%	1%	1%	1%	1%
grade 5 events	1370	1426	1318	1558	1464
	4%	4%	4%	4%	4%
grade 6 events	738	848	670	713	761
	2%	2%	2%	2%	2%
grade 7 events	22934	24722	25301	26096	25340
	82%	81%	83%	83%	83%

2.2 Compared Parameters

Parameter	Planned	Actual	Parameter	Planned	Actual
Instrument	ACIS	ACIS	Obspar format version number	7	7
Detector	ACIS-01236	ACIS-01236	Obspar file type	PREDICTED	ACTUAL
Grating	NONE	NONE	Obspar update status	NONE	UPDATED
Data mode	VFAINT	VFAINT	CCD I0 on	Y	Y
Observation mode	POINTING	POINTING	CCD I1 on	Y	Y
[deg] Pointing RA	216.135479	216.1659477079169	CCD I2 on	Y	Y
[deg] Pointing Dec	37.895016	37.90843074800131	CCD I3 on	Y	Y
[deg] Pointing Roll	358.809883	358.9998429652137	CCD S0 on	N	N
[mm] SIM focus pos	-0.782348	-0.7809083437167272	CCD S1 on	N	N
[mm] SIM defocus	0	0.001439871863259334	CCD S2 on	O1	Y
[mm] SIM translation stage pos	-233.592463	-233.5874344608287	CCD S3 on	N	N
[mm] SIM translation stage offset	0	-0.005018542100998502	CCD S4 on	N	N
[s] Observation start time (MET)	436447791.184000	436446576.77799	CCD S5 on	N	N
Observation start date	2011-10-31T11:28:45	2011-10-31T11:09:36	Number of optional ACIS chips dropped	0	0
[s] Observation end time (MET)	436452791.184000	436453919.36588	On-chip summing requested	N	N
Observation end date	2011-10-31T12:52:05	2011-10-31T13:11:59	Subarray requested	NONE	NONE
Read mode	TIMED	TIMED	Alternating exposures requested	N	N
			[s] Primary exposure time	0.000000	3.1

2.3 Aspect



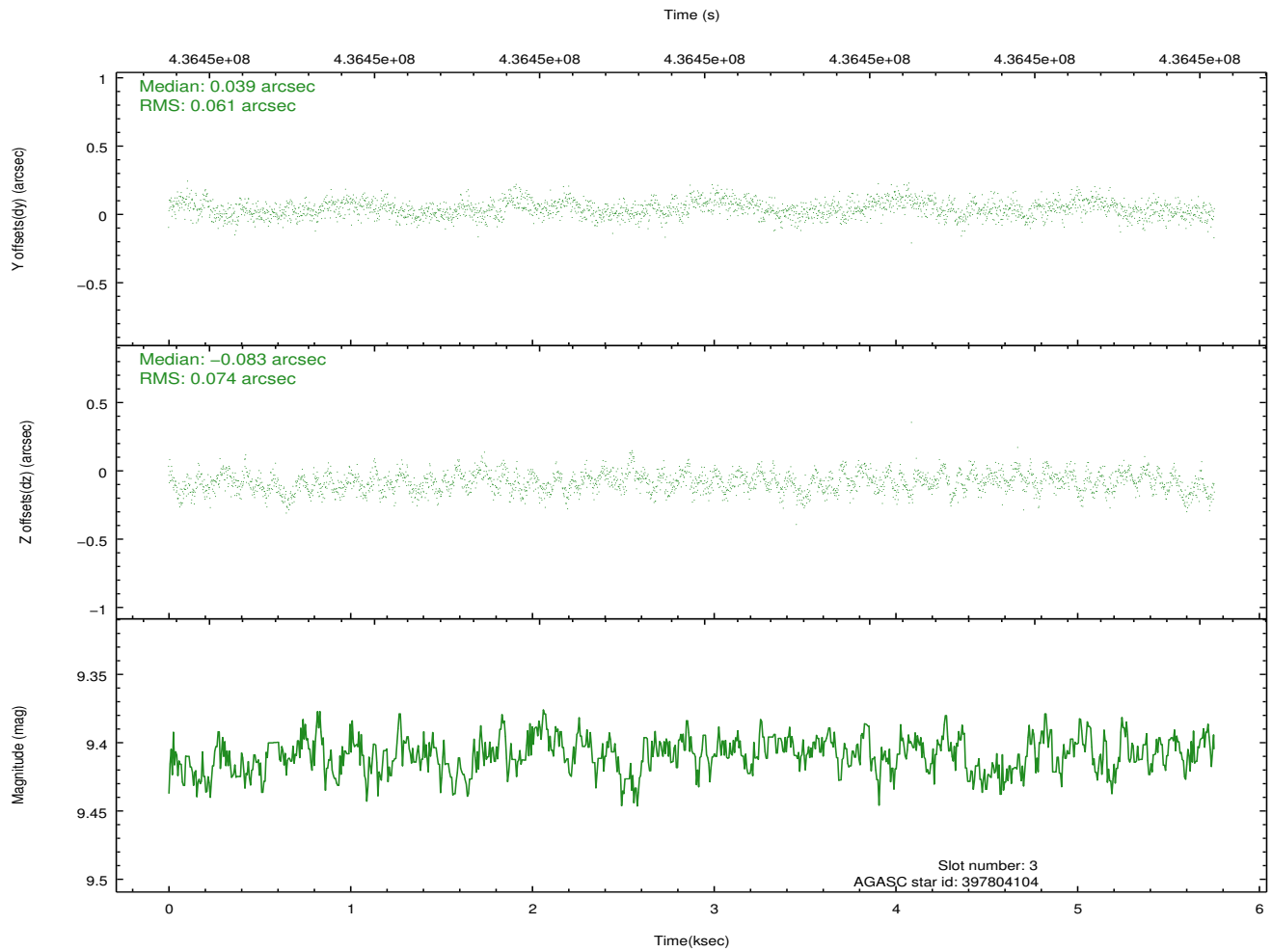
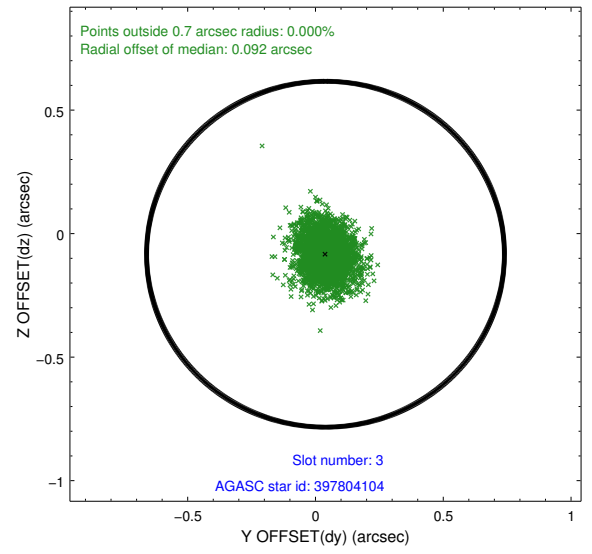
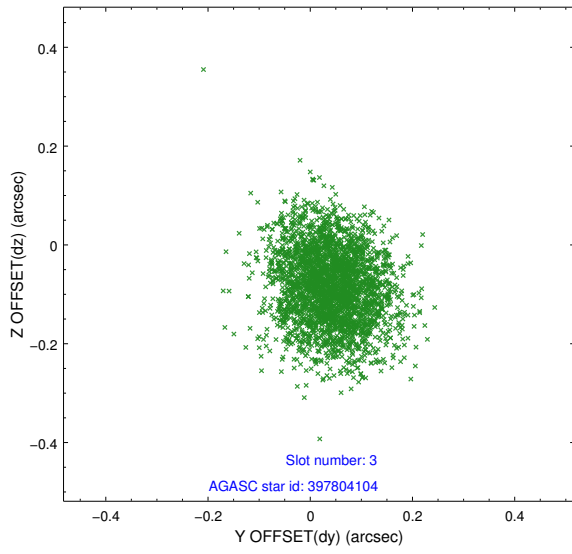


Slot Statistics

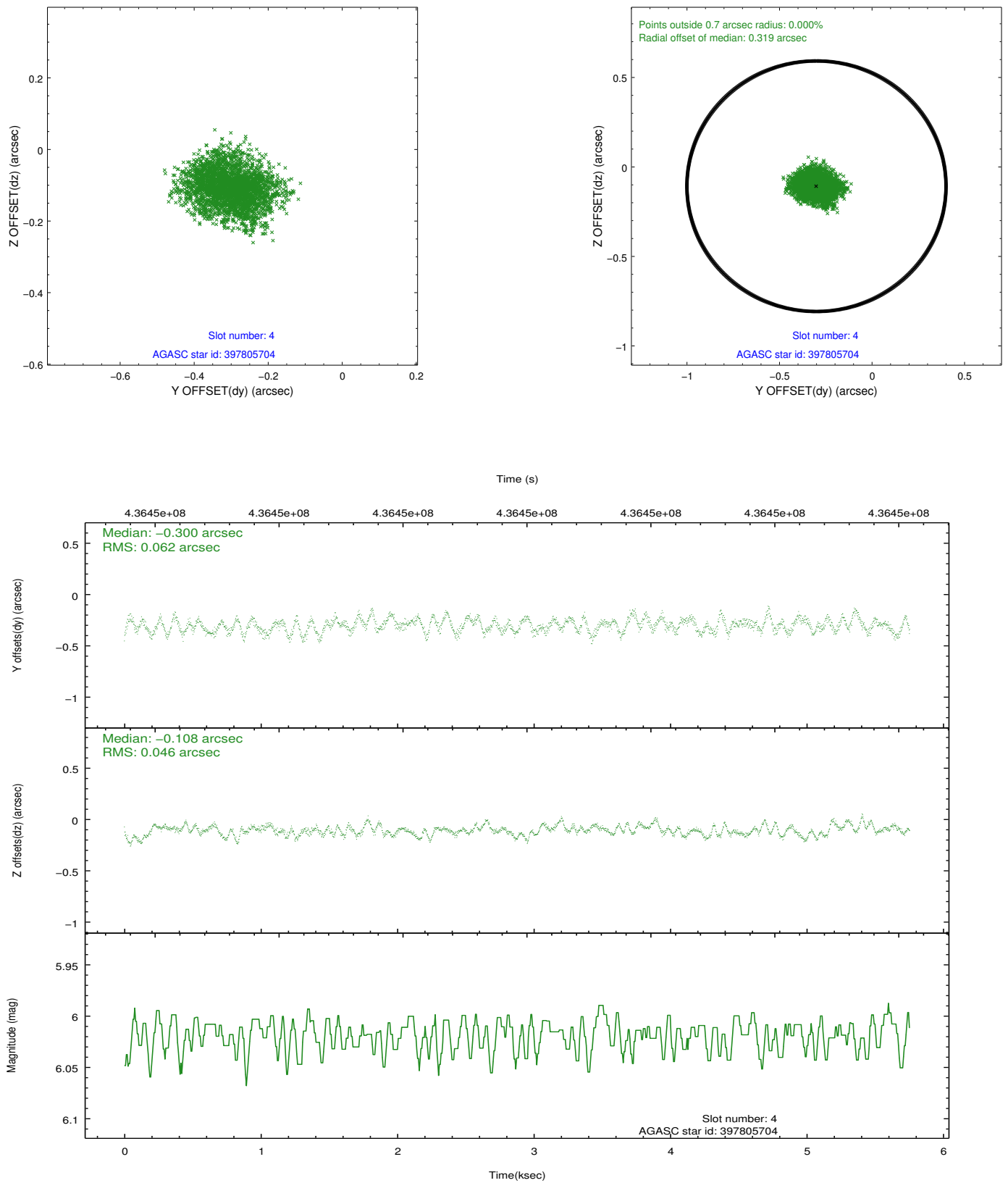
slot	status	id	mag	n_pts	med_dy	med_dz	dr1	dr2	ra	dec	mean_y	mean_z
0	FID	ACIS-I-1	7.07	1404	0.073	-0.014	0.008	0.013	0.000000	0.000000	929.20	-836.94
1	FID	ACIS-I-5	7.05	1404	-0.230	0.076	0.007	0.013	0.000000	0.000000	-1818.65	1060.10
2	FID	ACIS-I-6	7.06	1404	0.067	0.009	0.008	0.013	0.000000	0.000000	393.60	1705.73
3	GUIDE	397804104	9.41	2806	0.039	-0.083	0.103	0.165	216.088268	38.455118	-175.61	2014.38
4	GUIDE	397805704	6.02	2808	-0.300	-0.108	0.084	0.130	216.371468	38.393051	628.23	1807.81
5	GUIDE	397807608	10.29	2806	-0.016	-0.065	0.193	0.308	215.666147	37.953309	-1335.98	186.10
6	GUIDE	397808560	9.87	2801	0.178	-0.010	0.134	0.232	216.564463	37.977903	1210.16	326.33
7	GUIDE	334496936	8.83	2805	0.106	0.266	0.095	0.151	215.286913	37.401026	-2390.19	-1817.46

2.4 Star Slots

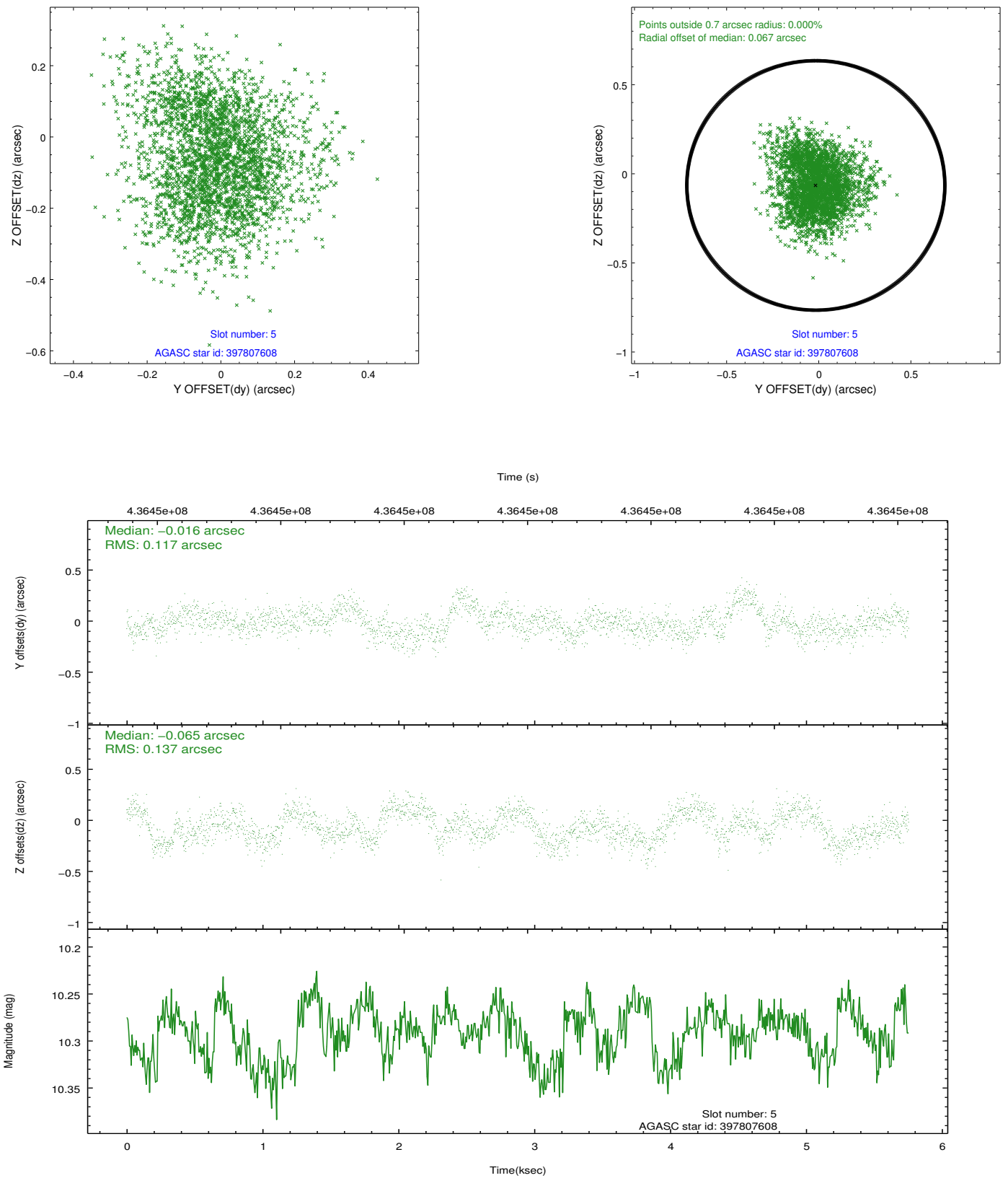
2.4.1 Slot 3



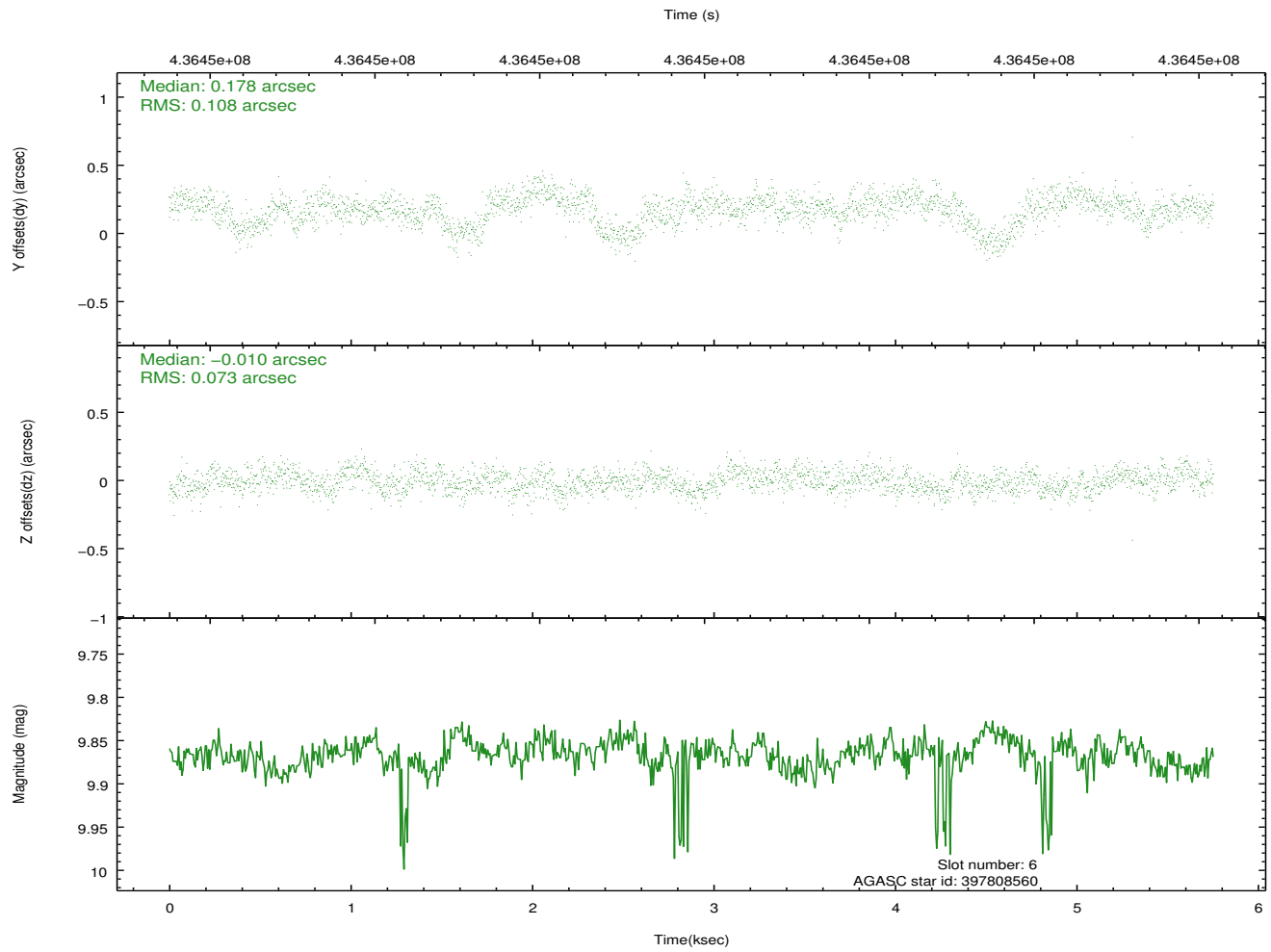
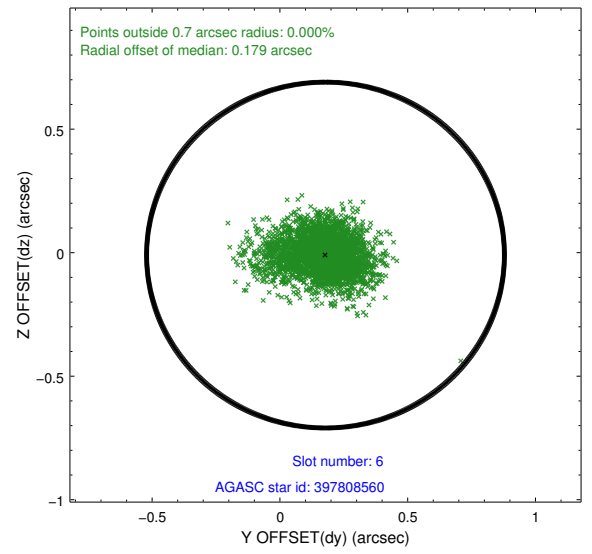
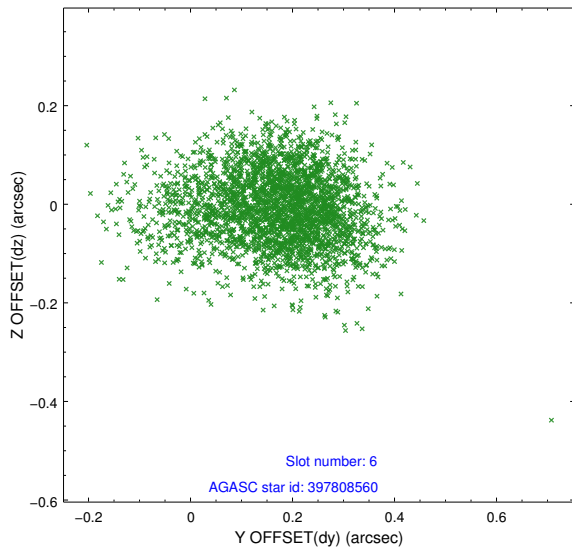
2.4.2 Slot 4



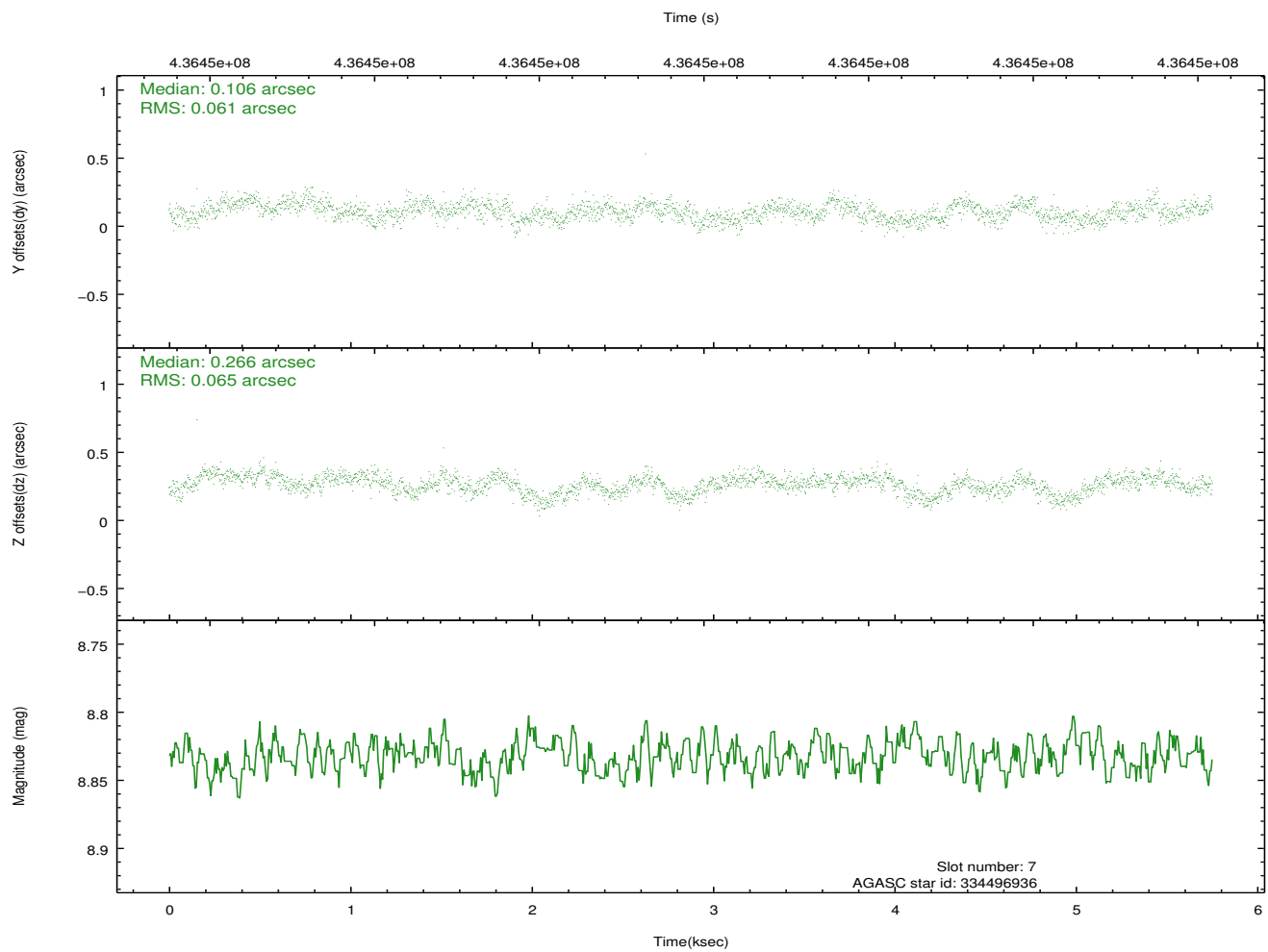
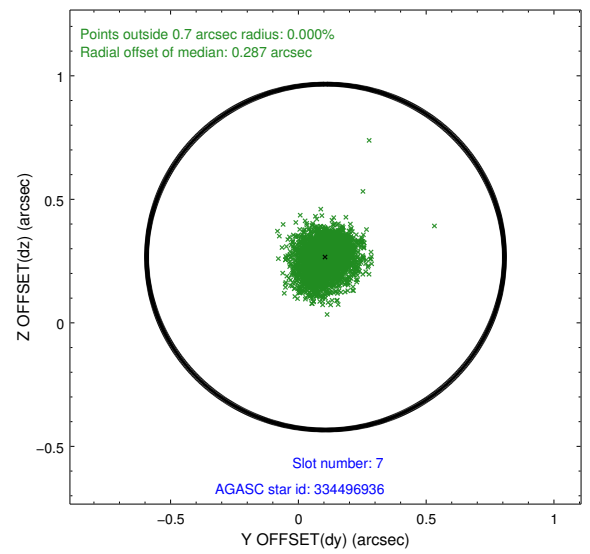
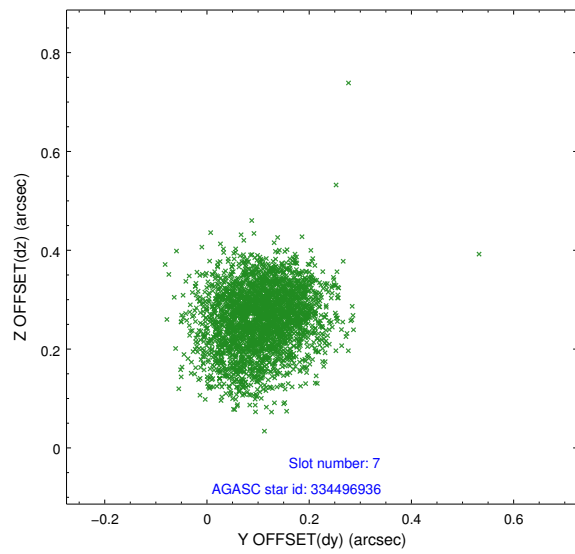
2.4.3 Slot 5



2.4.4 Slot 6

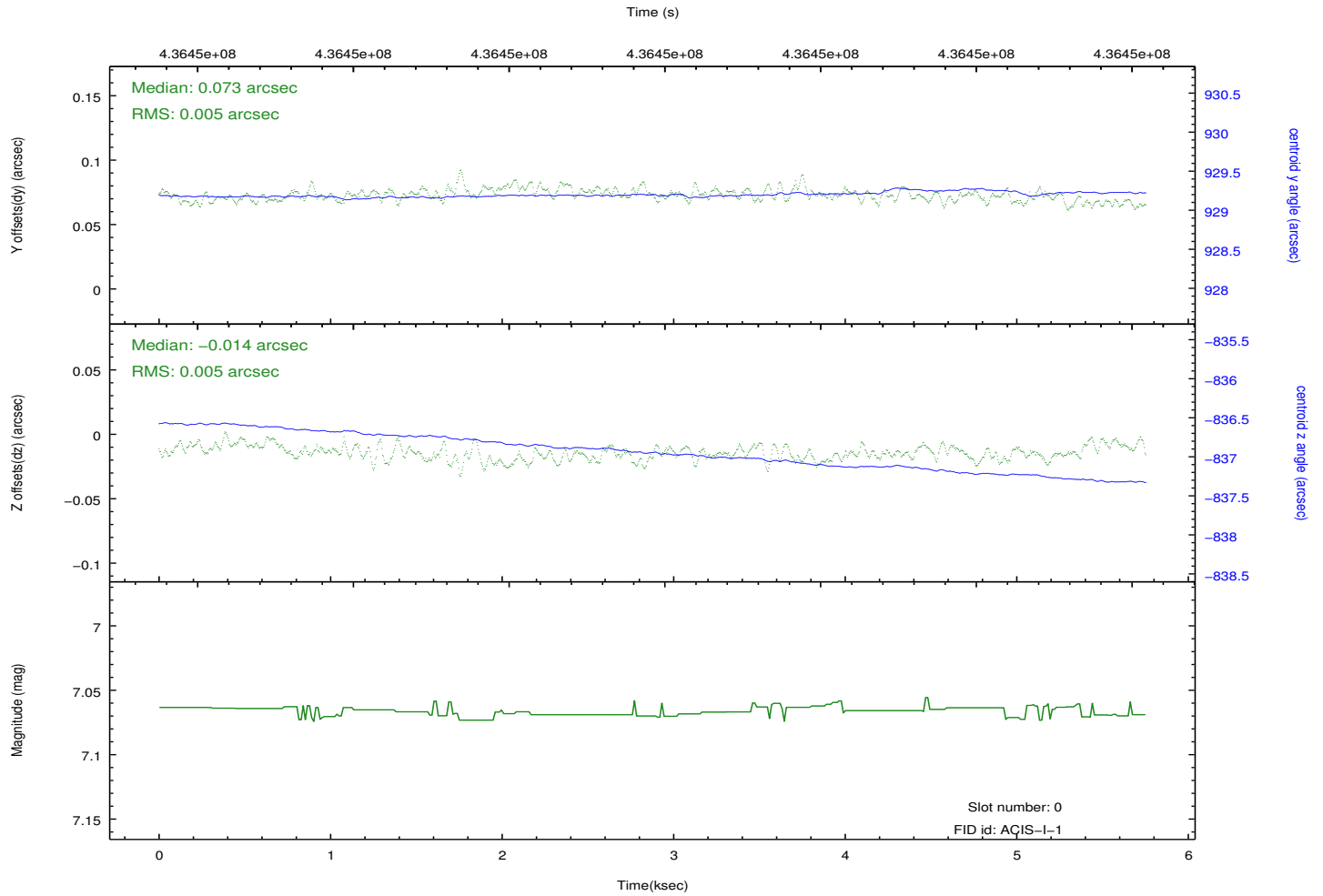
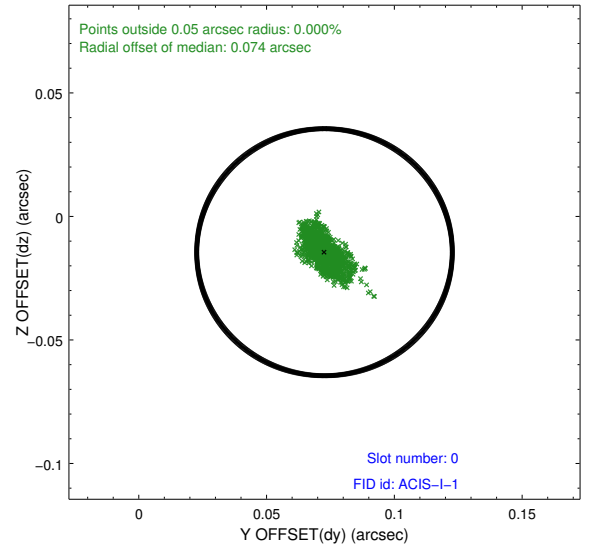
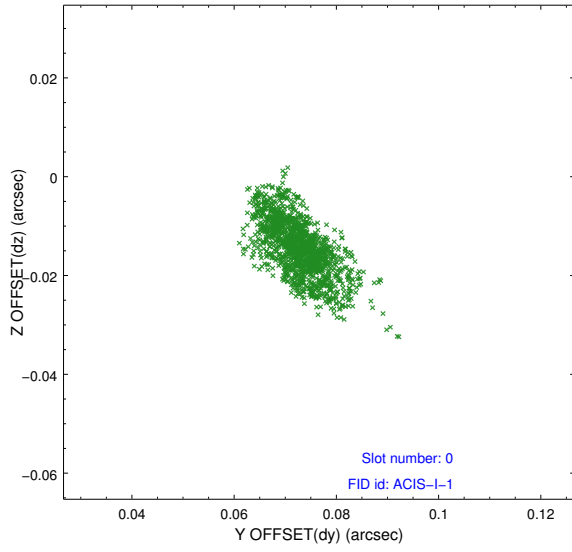


2.4.5 Slot 7

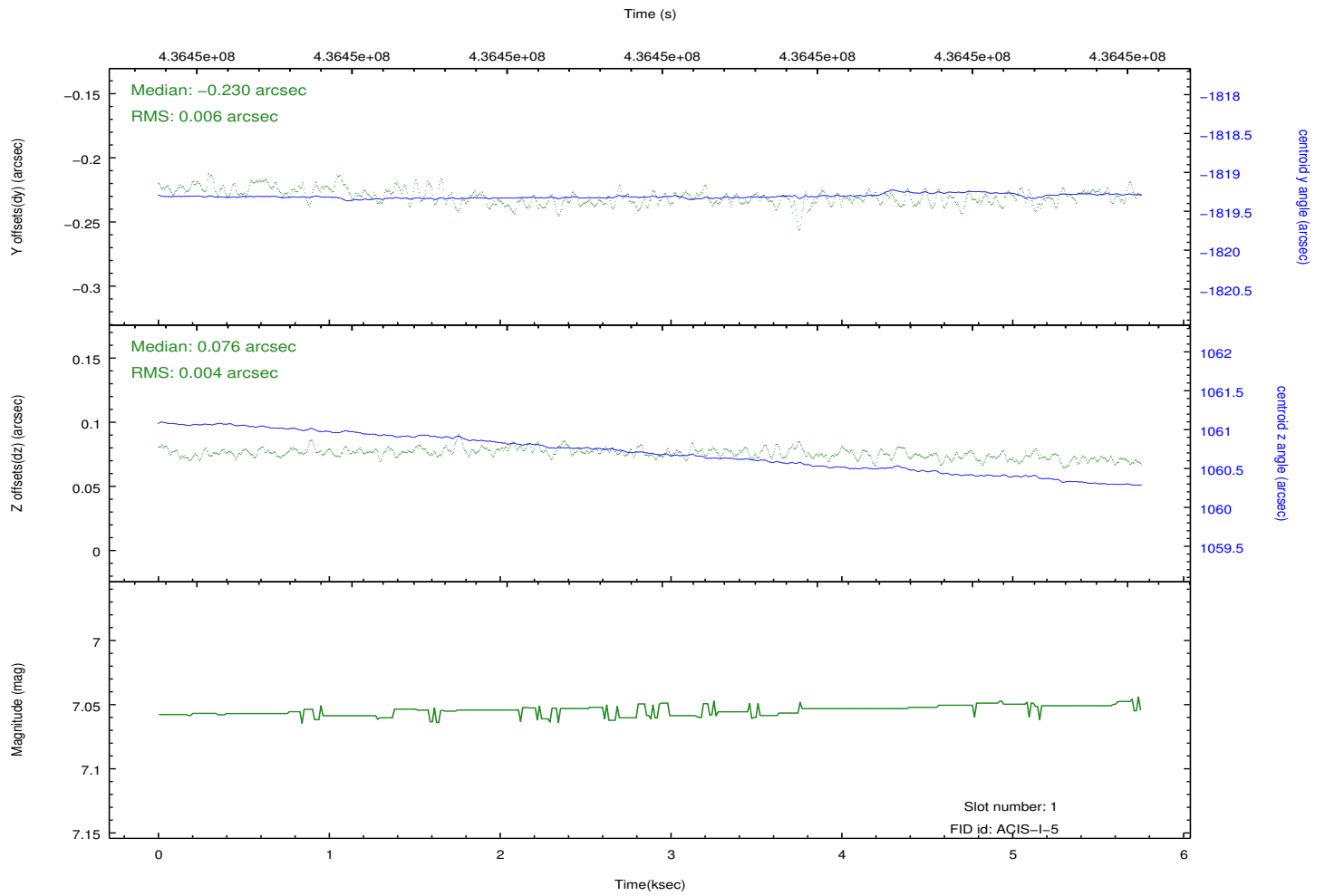
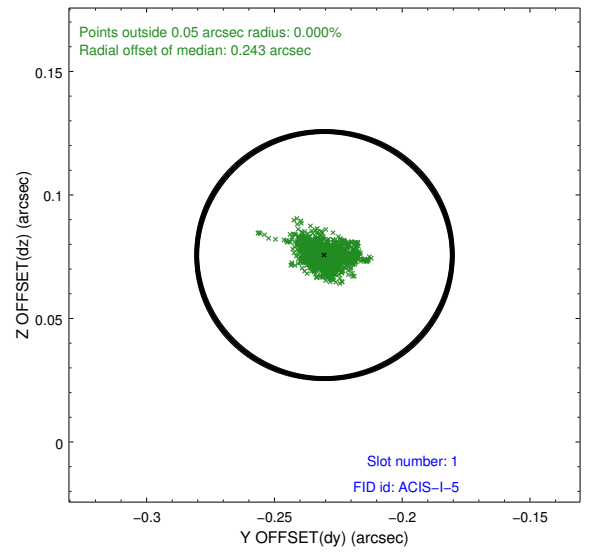
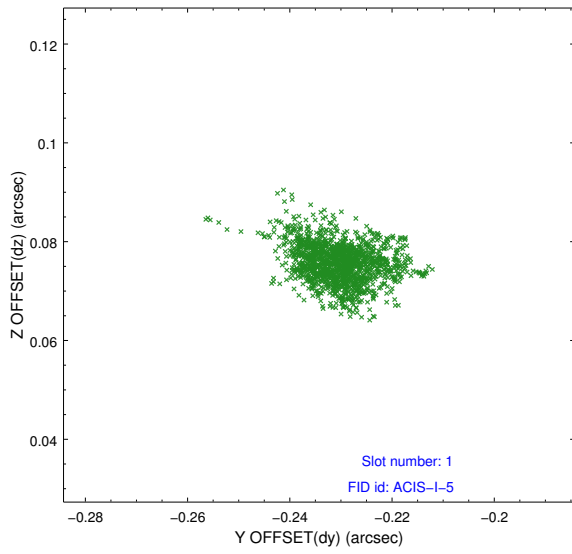


2.5 FID Slots

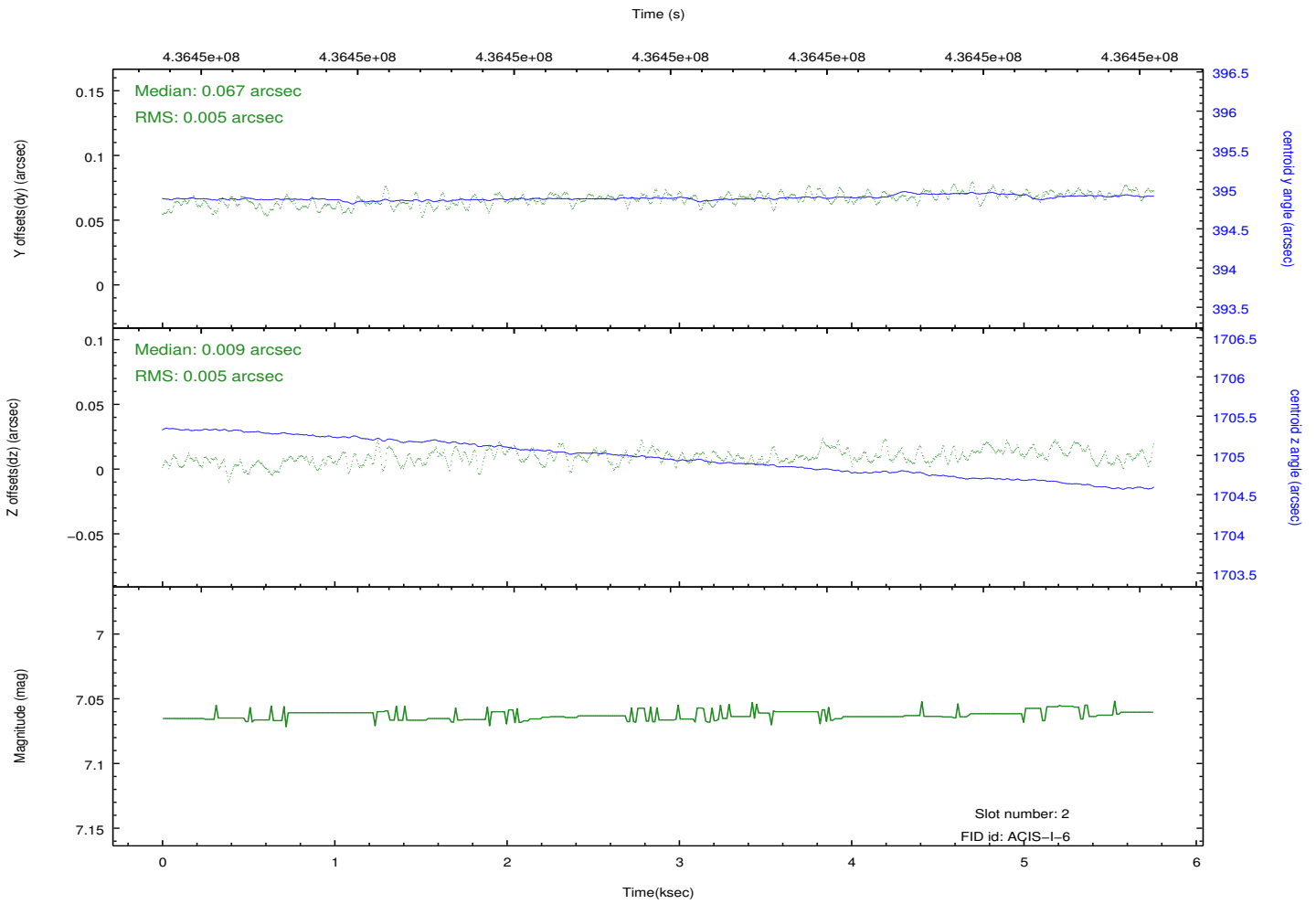
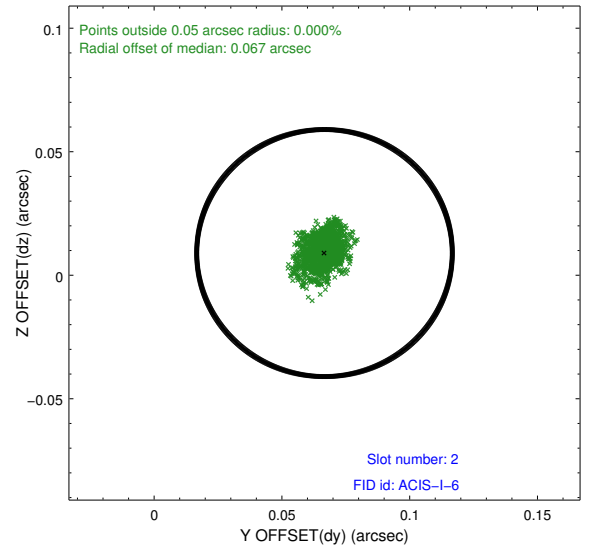
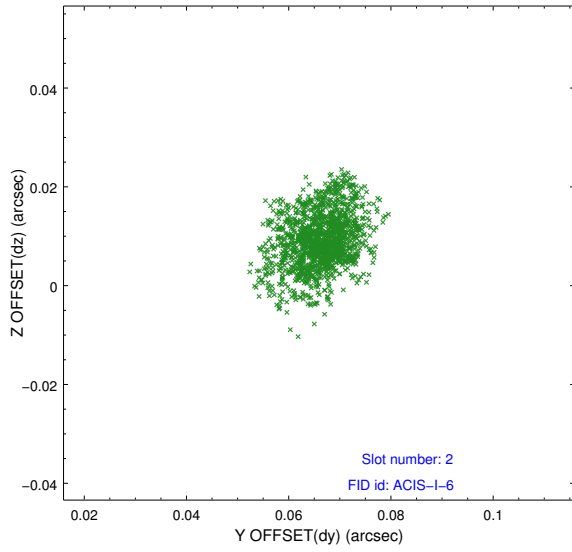
2.5.1 Slot 0



2.5.2 Slot 1



2.5.3 Slot 2



A Summary

A.1 Status

V&V Scientist	Beth Sundheim
V&V Date (YYYY-MM-DD)	2012.03.02
V&V Edition	1
V&V Disposition and Status	OK
V&V Charge Time	5.0529590685964

A.2 Comments