

V&V Reference Report

L2 ASCDS Version : 8.2.1

Observation 132 - L2 Version 3
Chandra X-Ray Center

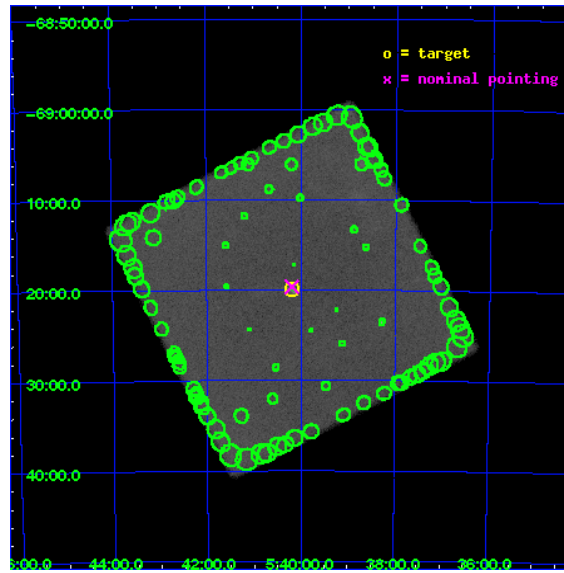
L2 Processing Date : Jan 12 2010

Contents

1	Front	2
2	OBI	3
2.1	OBI	3
2.1.1	Images	3
2.1.2	Parameters	4
2.1.3	Events	4
2.2	Compared Parameters	5
2.3	Aspect	6
2.4	Star Slots	9
2.4.1	Slot 3	9
2.4.2	Slot 4	10
2.4.3	Slot 5	11
2.4.4	Slot 6	12
2.4.5	Slot 7	13
2.5	FID Slots	14
2.5.1	Slot 0	14
2.5.2	Slot 1	15
2.5.3	Slot 2	16
3	Point Sources	17
A	Summary	18
A.1	Status	18
A.2	Comments	18

1 Front

seq_num	590000	Sequence number
obs_id	132	Observation id
title	VERIFICATION OF AXAF TIMING CAPABILITY	Proposal title
observer	Dr. CXC Calibration	Principal investigator
object	PSR B0540-69	Source name
ra_targ	85.04625	Observer's specified target RA
dec_targ	-69.332	Observer's specified target Dec
ra_nom	85.047858145633	Nominal RA
dec_nom	-69.327135801527	Nominal Dec
roll_nom	107.60348451184	Nominal Roll
revision	3	Processing version of data
ontime	17796.306889348	[s]
livetime	17645.591049955	Ontime multiplied by DTCOR
l2events	726931	Number of level 2 events

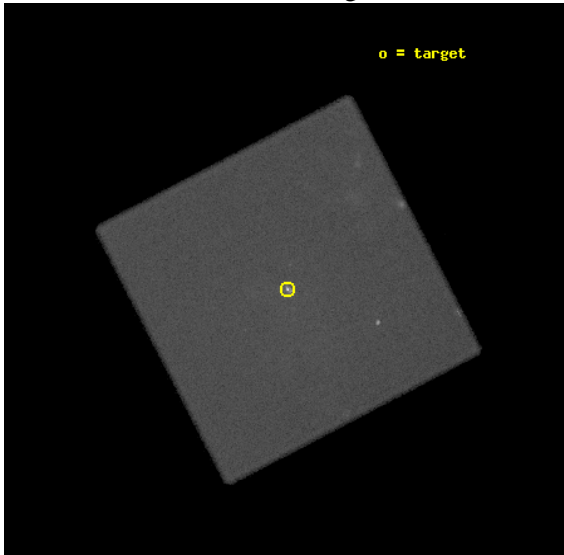


2 OBI

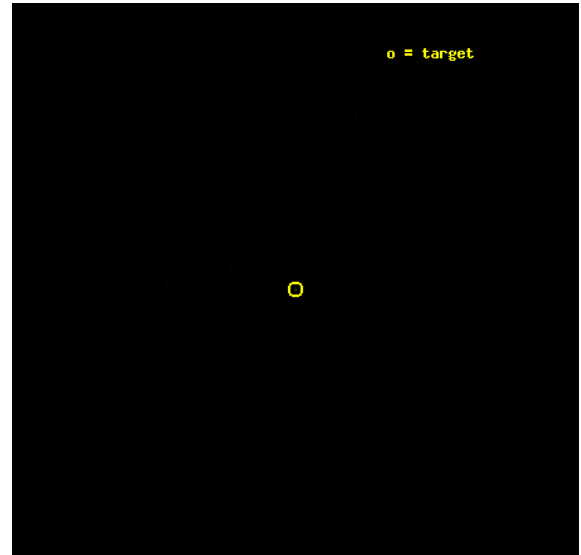
2.1 OBI

2.1.1 Images

Level 1 Image



Level 1 Bad Events



2.1.2 Parameters

obi_num	0	Obi number	sched_exp_time	18000.000000	Scheduled observation exposure time
ascdsver	8.2.1	Processing system revision	ontime	17796.306889348	[s]
caldbver	4.1.5	 	ll events	1211697	Number of level 1 events
date	2010-01-12T15:48:29	Date and time of file creation			
revision	3	Processing version of data			

2.1.3 Events

Level 1 Events

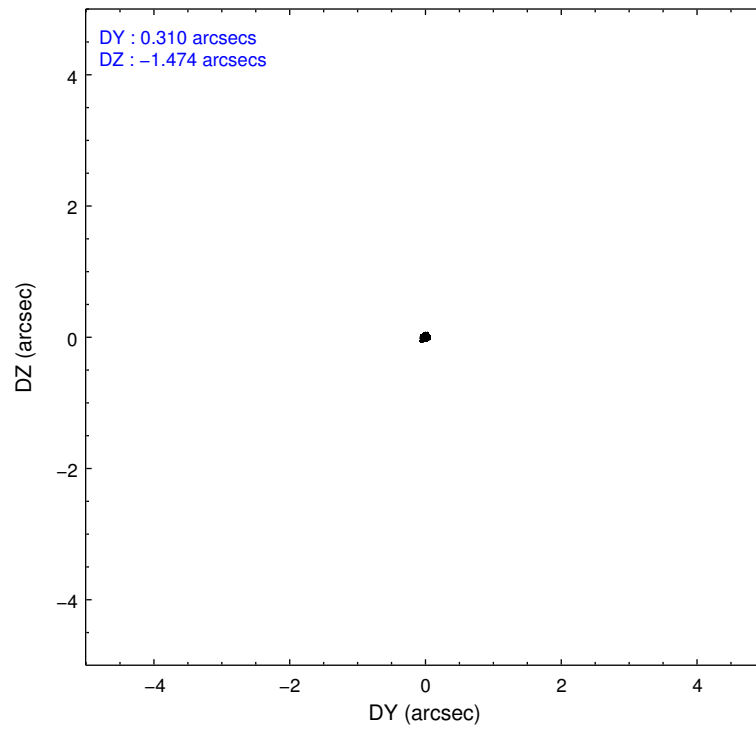
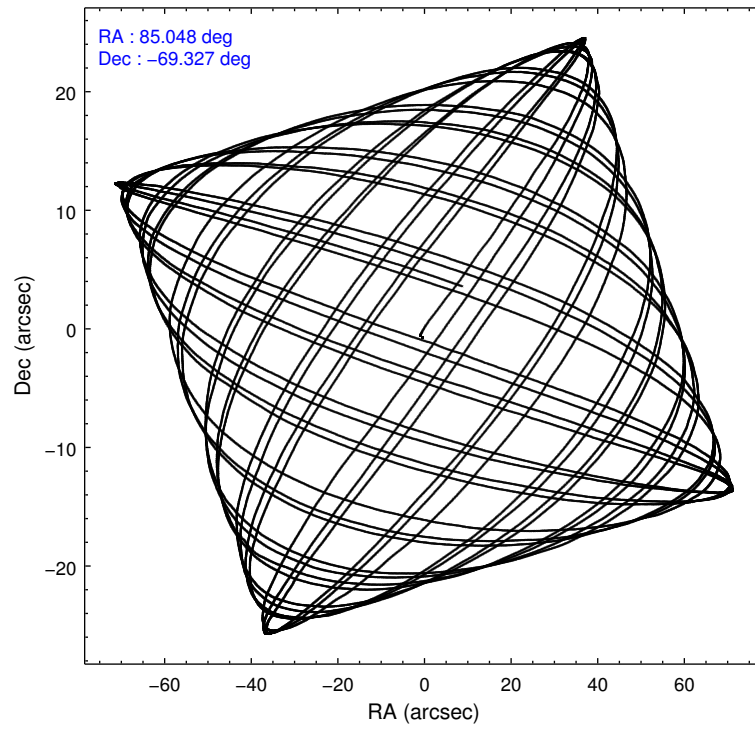
	segment 0
level 1 events	1211697
rejected events	5306
rejected %	0%

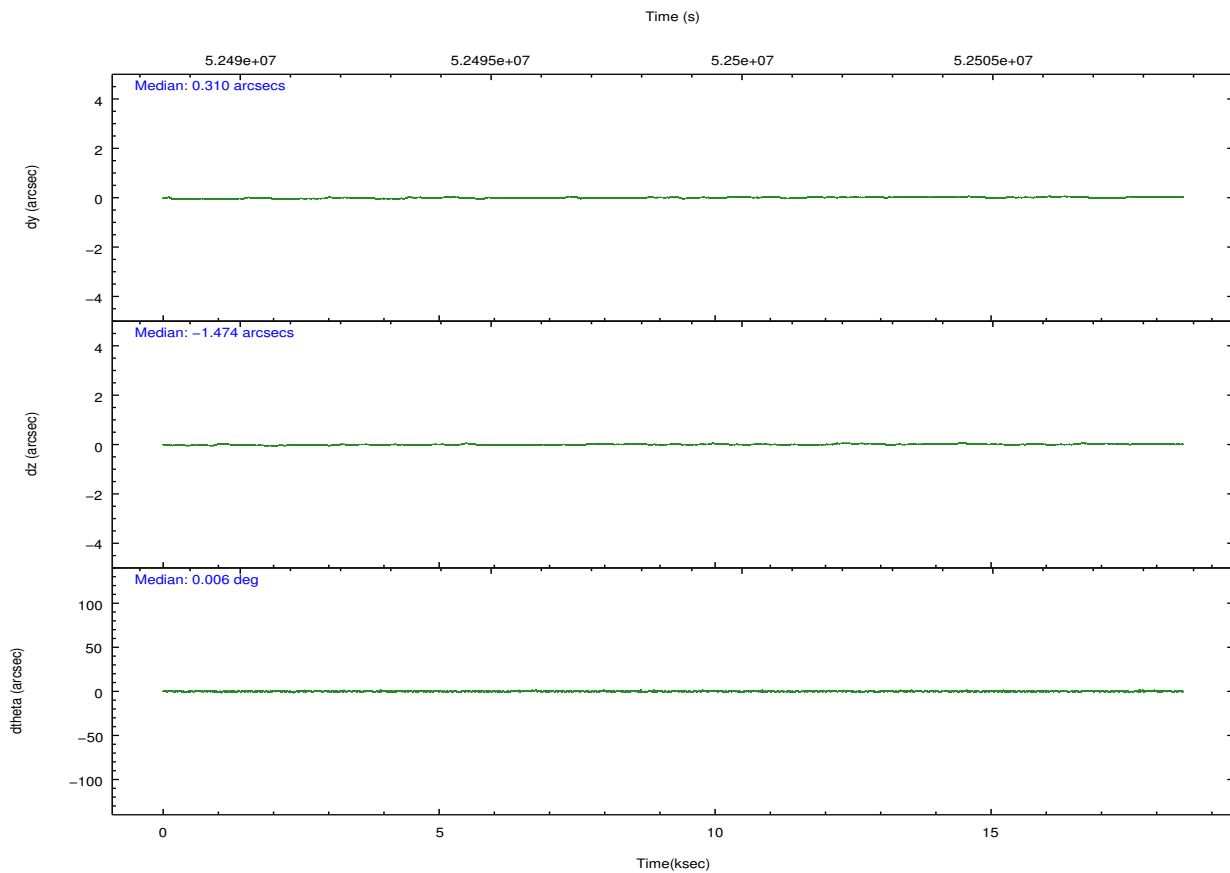
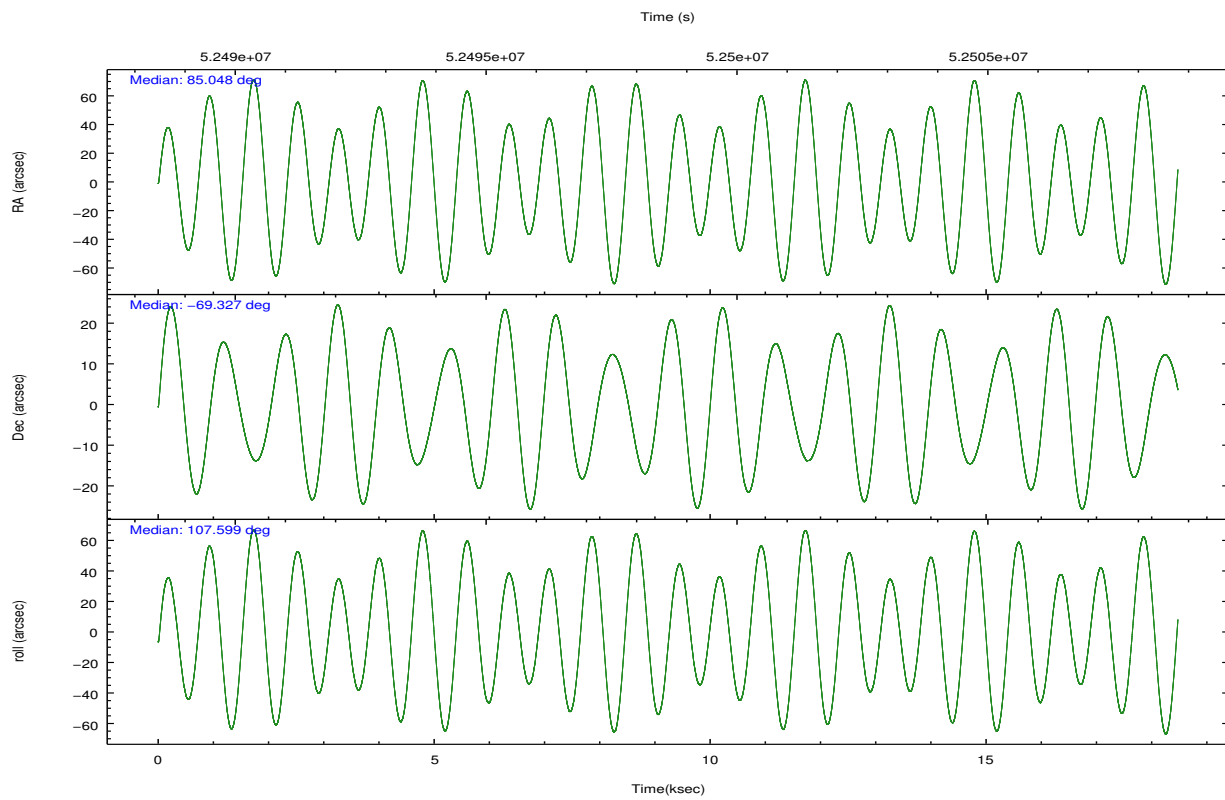
2.2 Compared Parameters

Parameter	Planned	Actual
Instrument	HRC	HRC
Detector	HRC-I	HRC-I
Grating	NONE	NONE
Data mode	OBSERVING	OBSERVING
Observation mode	POINTING	POINTING
Pointing RA	85.105236	85.04785814563313
Pointing Dec	-69.345640	-69.32713580152722
Pointing Roll	107.752663	107.6034845118434
SIM focus pos (mm)	-0.024443	-1.300001029371461
SIM defocus (mm)	1.01585	-0.259708408712586
SIM translation stage pos (mm)	126.985494	126.9829799899862
SIM translation stage offset (mm)	0	0.002508901615314585
Observation start time	52489864.184000	52489197.448319
Observation start date	1999-08-31T12:30:00	1999-08-31T12:19:57
Observation end time	52507864.184000	52509394.561544
Observation end date	1999-08-31T17:30:00	1999-08-31T17:56:34

Parameter	Planned	Actual
Obspar format version number	6	6
Obspar file type	PREDICTED	ACTUAL
Obspar update status	NONE	UPDATED

2.3 Aspect



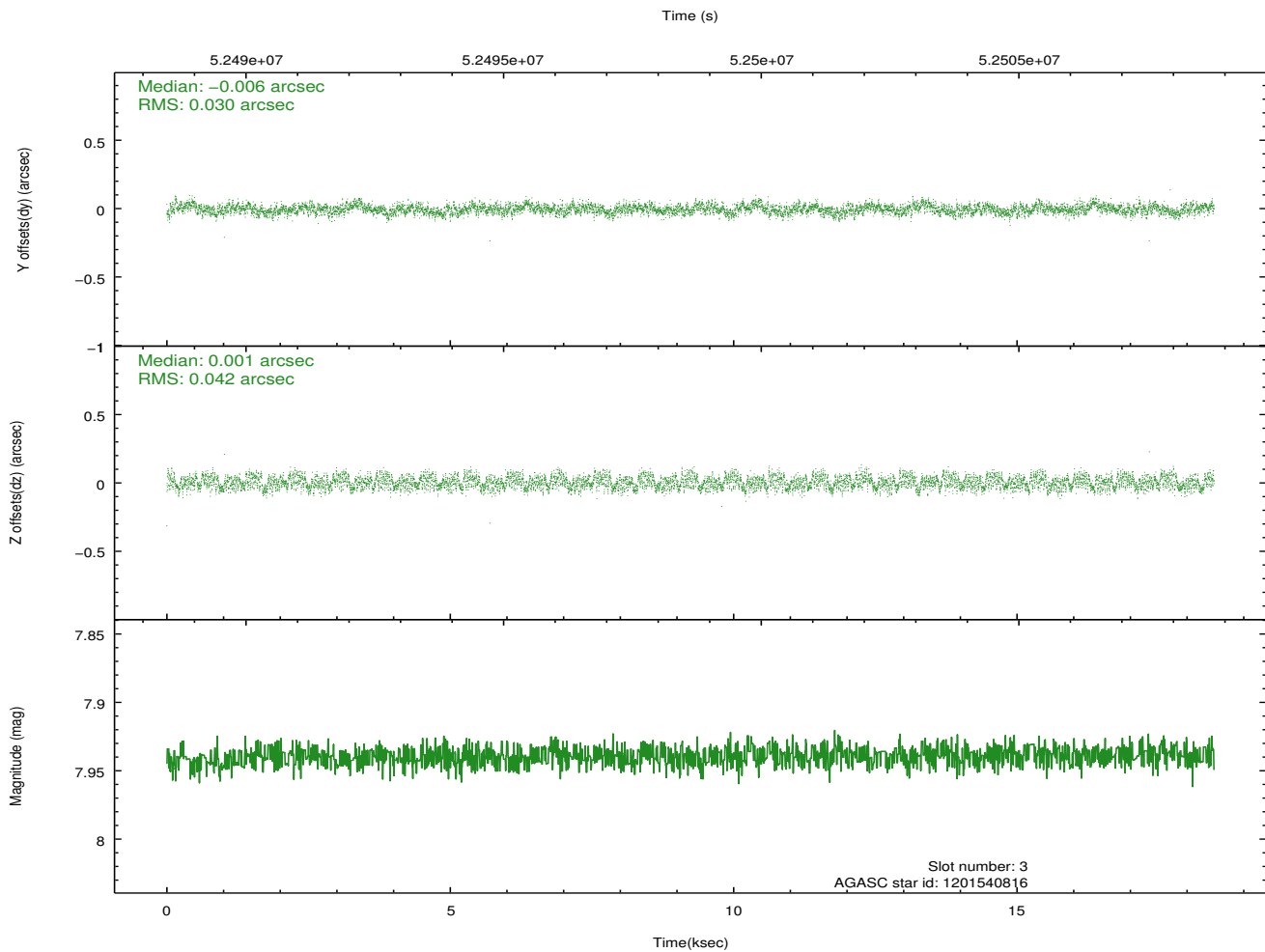
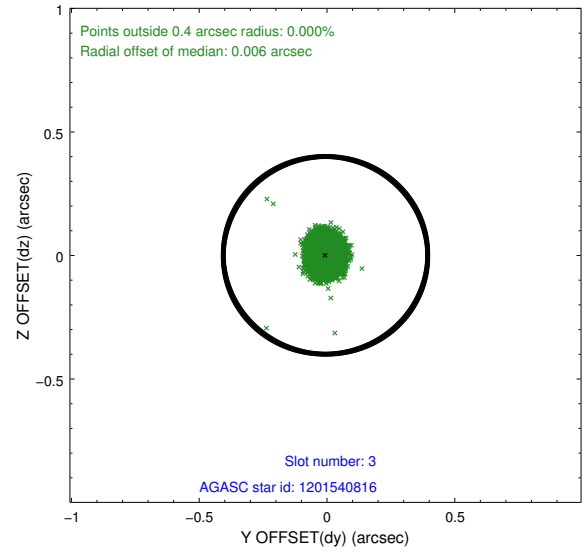
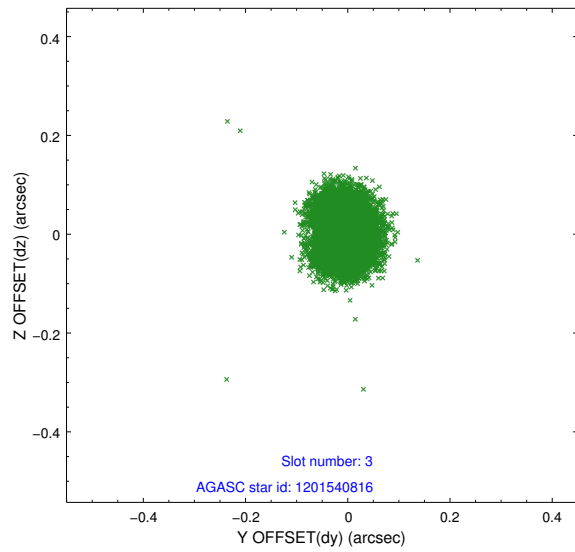


Slot Statistics

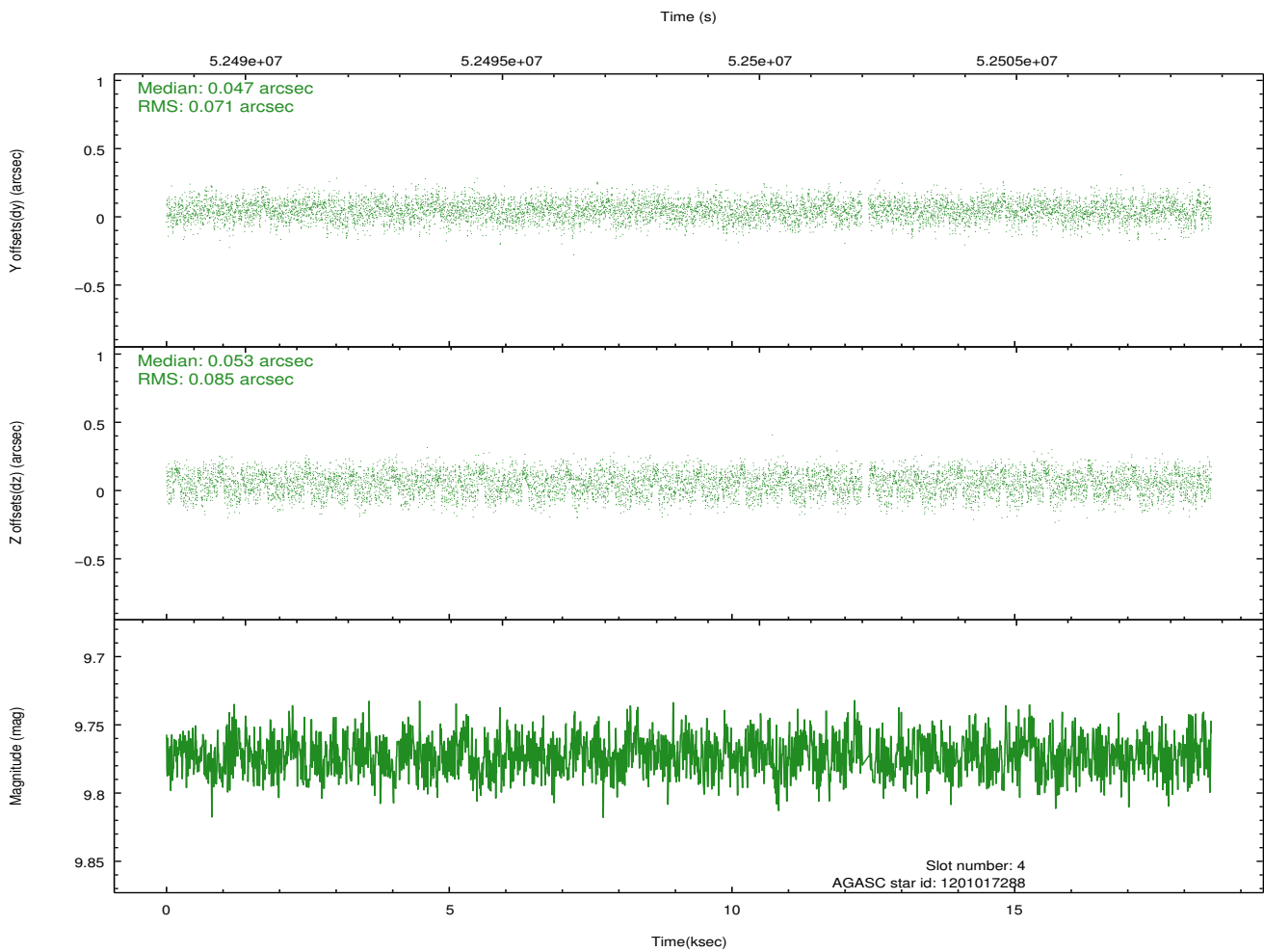
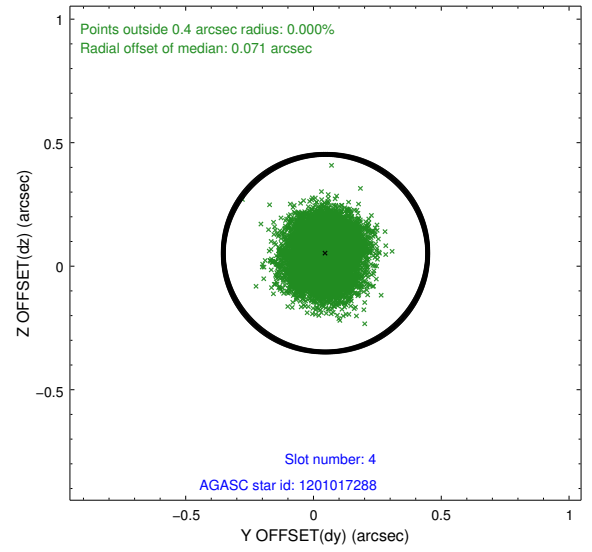
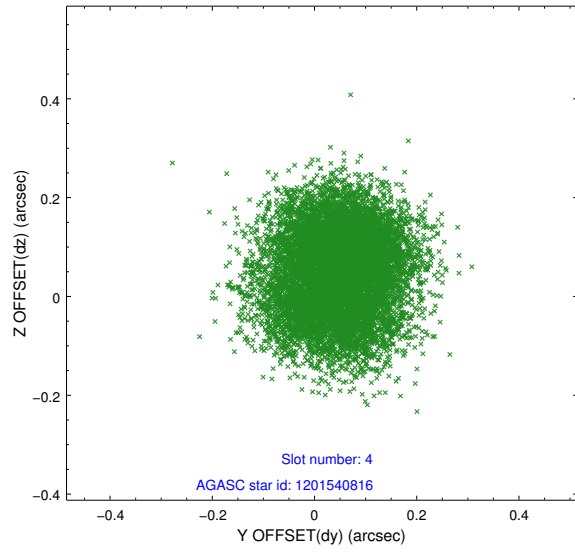
slot	status	id	mag	n_pts	med_dy	med_dz	dr1	dr2	ra	dec	mean_y	mean_z
0	FID	HRC-I-1	6.95	9014	0.025	-0.094	0.006	0.010	0.000000	0.000000	-755.62	-1286.22
1	FID	HRC-I-3	7.04	9014	0.044	0.012	0.007	0.011	0.000000	0.000000	-1184.24	1018.24
2	FID	HRC-I-4	6.98	9014	0.045	-0.008	0.005	0.009	0.000000	0.000000	1286.93	1016.16
3	GUIDE	1201540816	7.94	9012	-0.006	0.001	0.055	0.086	86.998494	-69.749817	-2139.39	-1791.88
4	GUIDE	1201017288	9.77	8945	0.047	0.053	0.120	0.184	84.358094	-68.728983	2406.22	254.19
5	GUIDE	1201406992	9.27	9004	0.033	0.074	0.085	0.136	83.682859	-69.471866	95.20	1854.93
6	GUIDE	1200886544	9.58	9011	0.014	-0.028	0.105	0.164	82.995430	-69.160893	1412.94	2384.50
7	GUIDE	1201540376	9.26	9010	-0.088	-0.097	0.075	0.123	87.370568	-69.787305	-2422.55	-2182.35

2.4 Star Slots

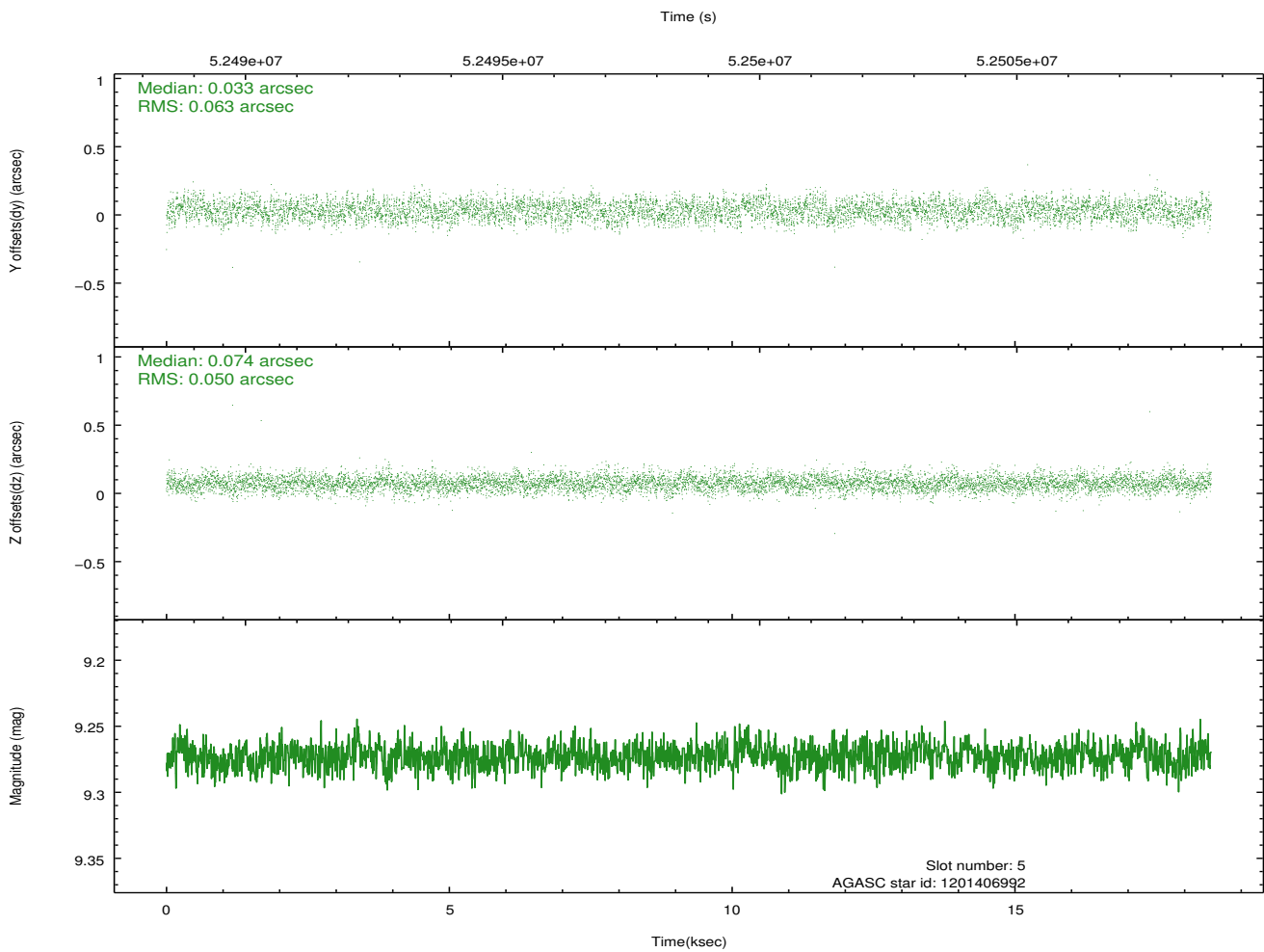
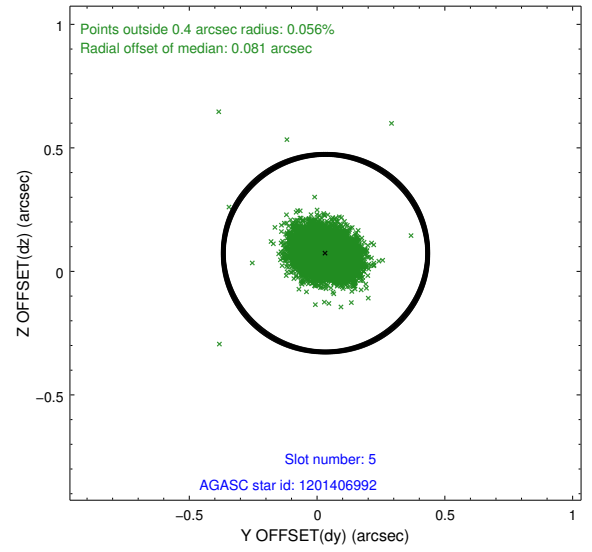
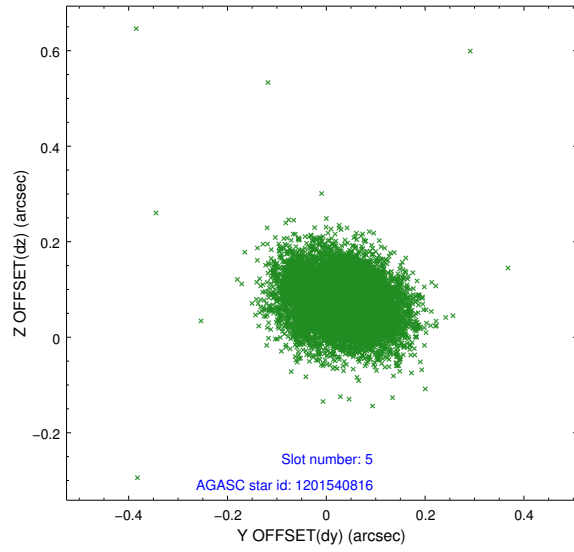
2.4.1 Slot 3



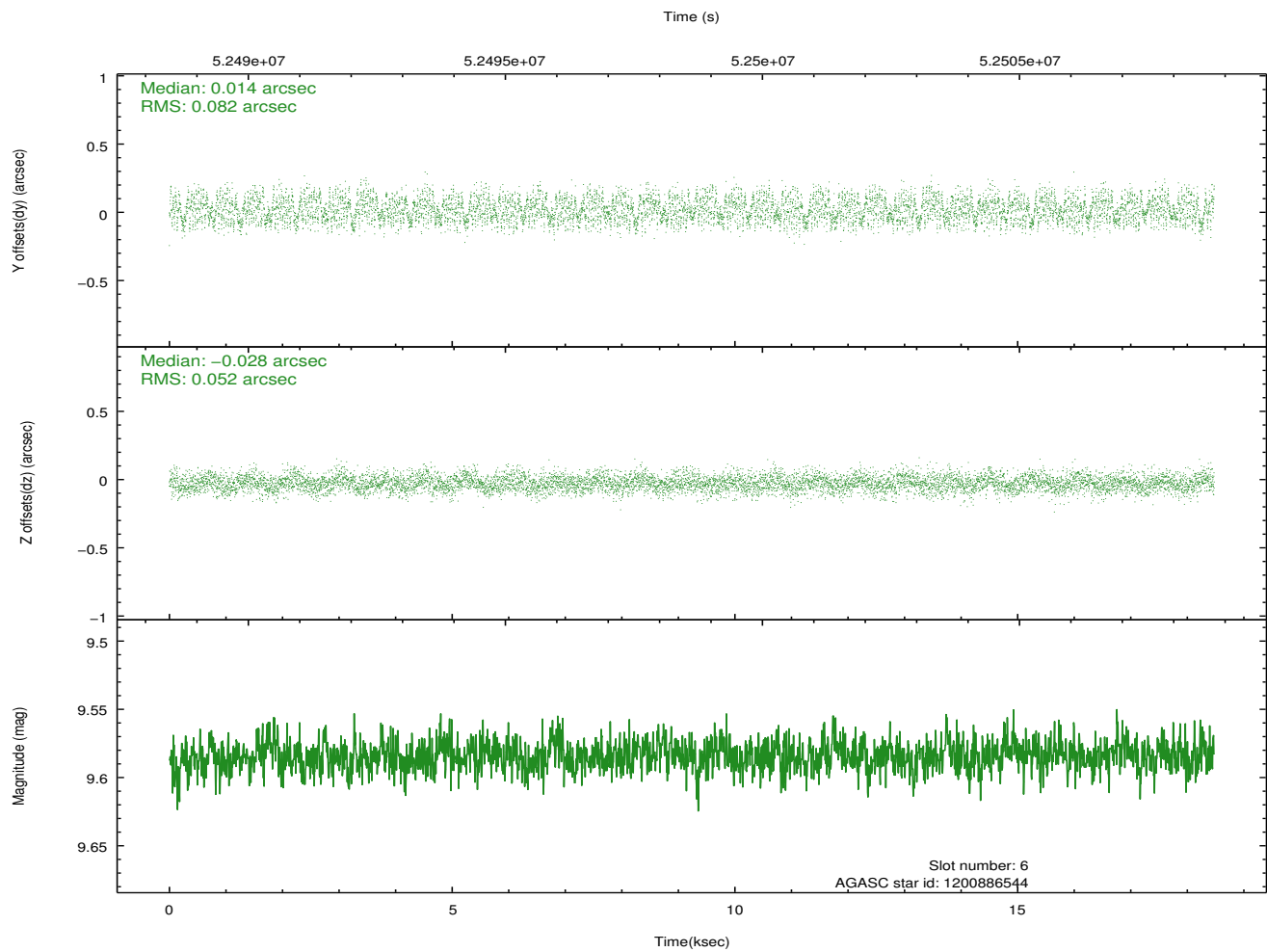
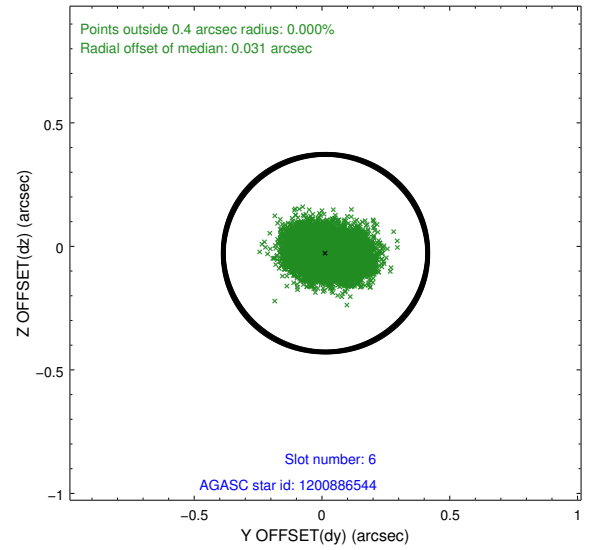
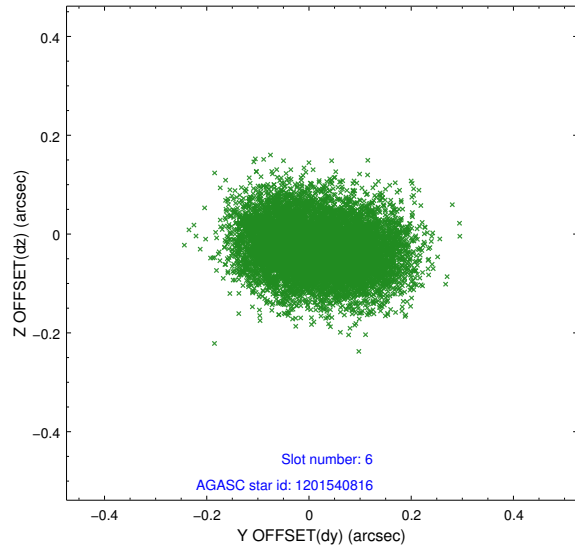
2.4.2 Slot 4



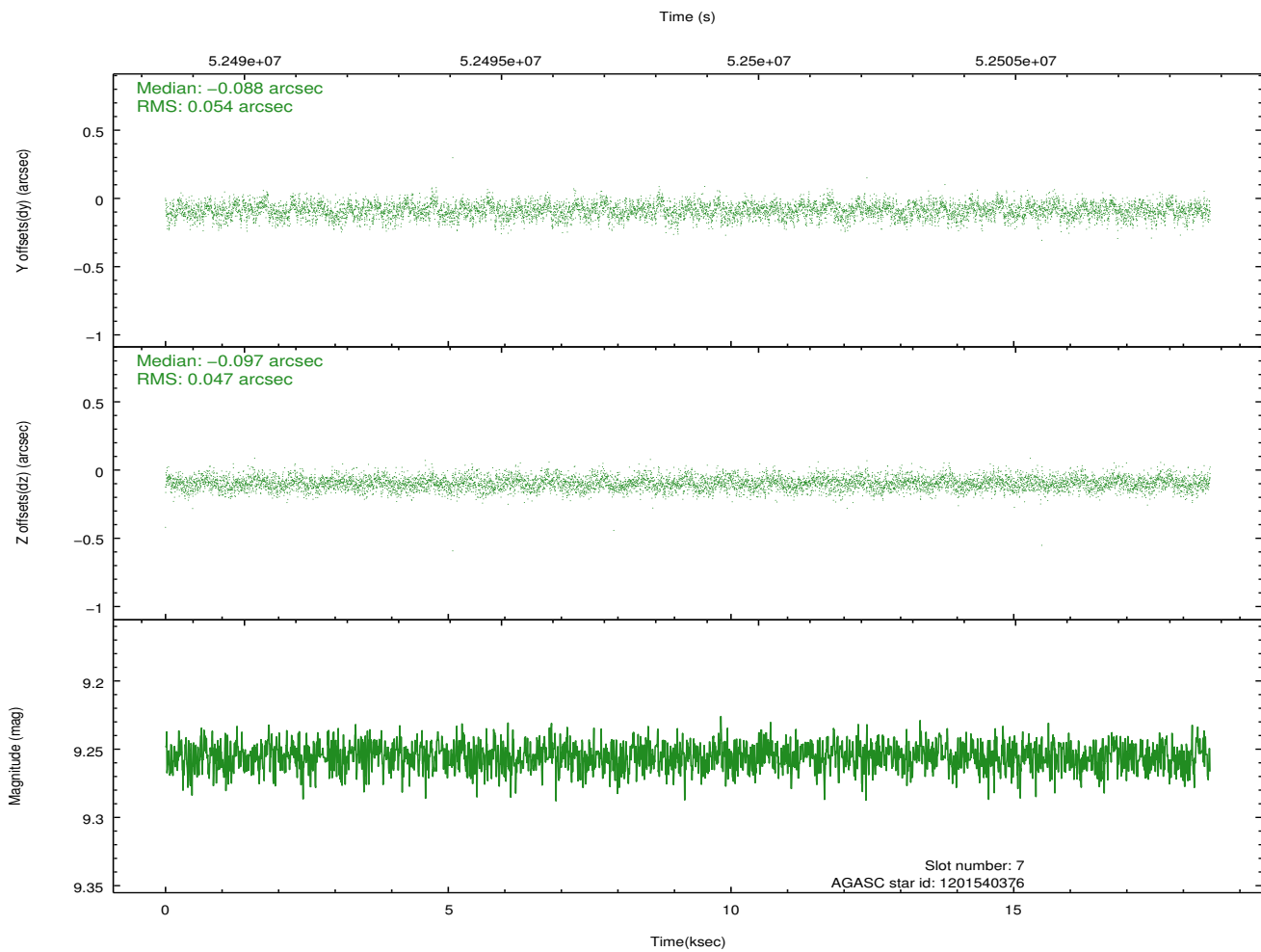
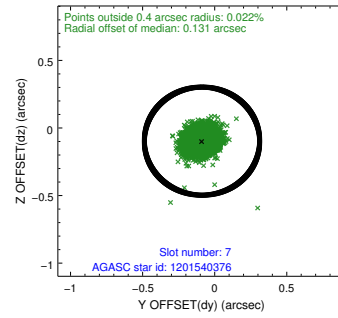
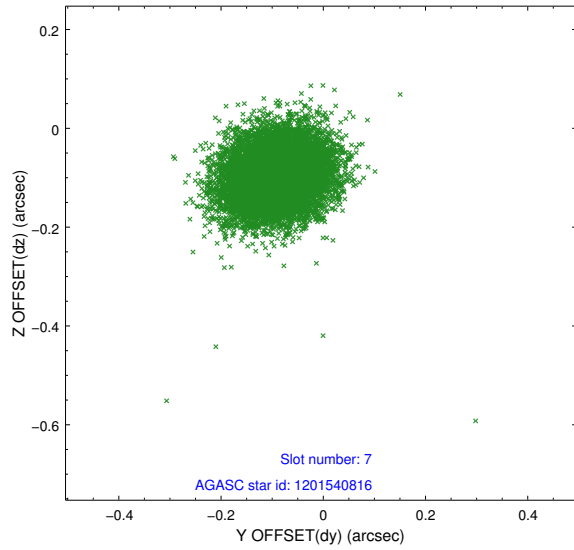
2.4.3 Slot 5



2.4.4 Slot 6

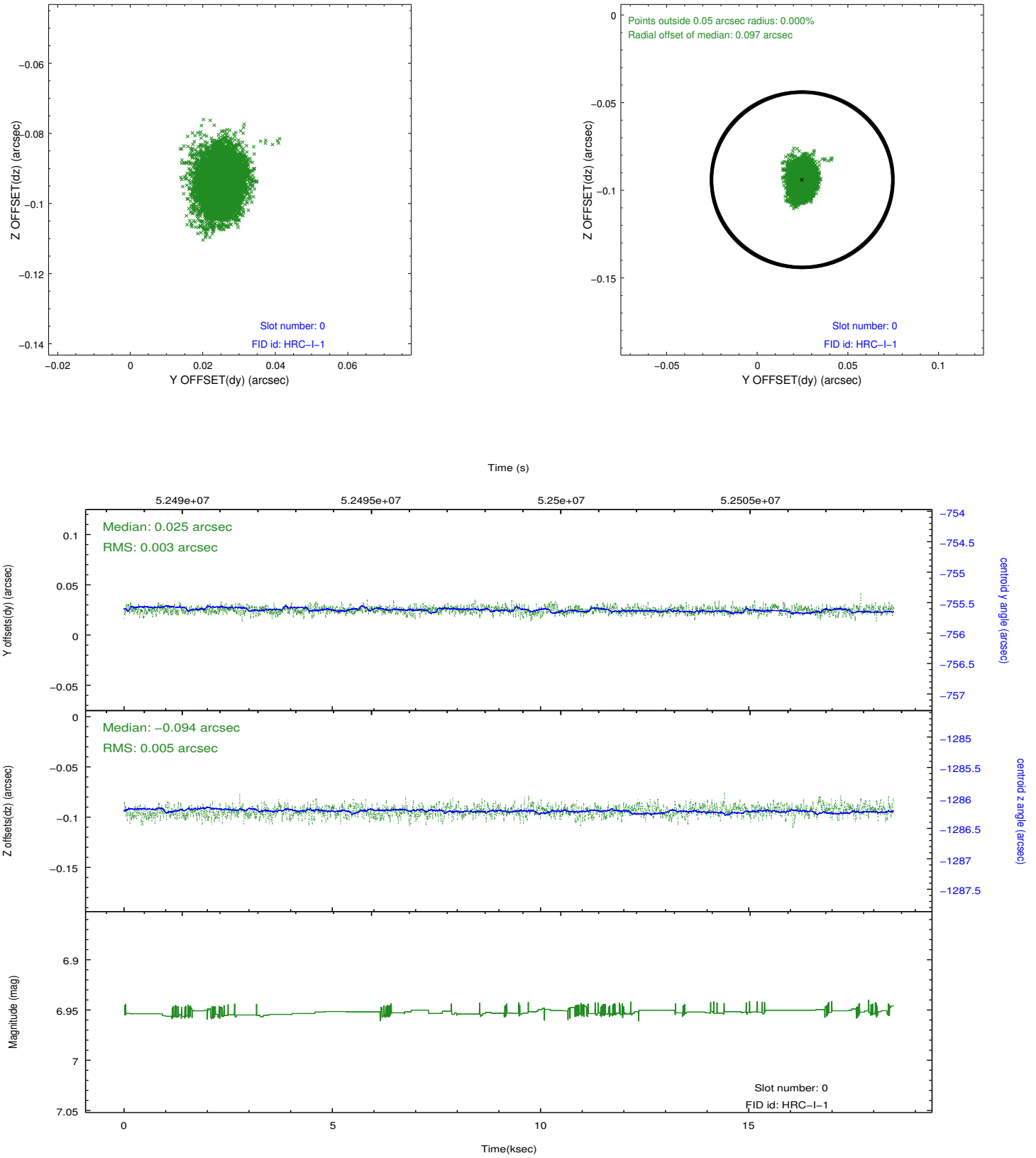


2.4.5 Slot 7

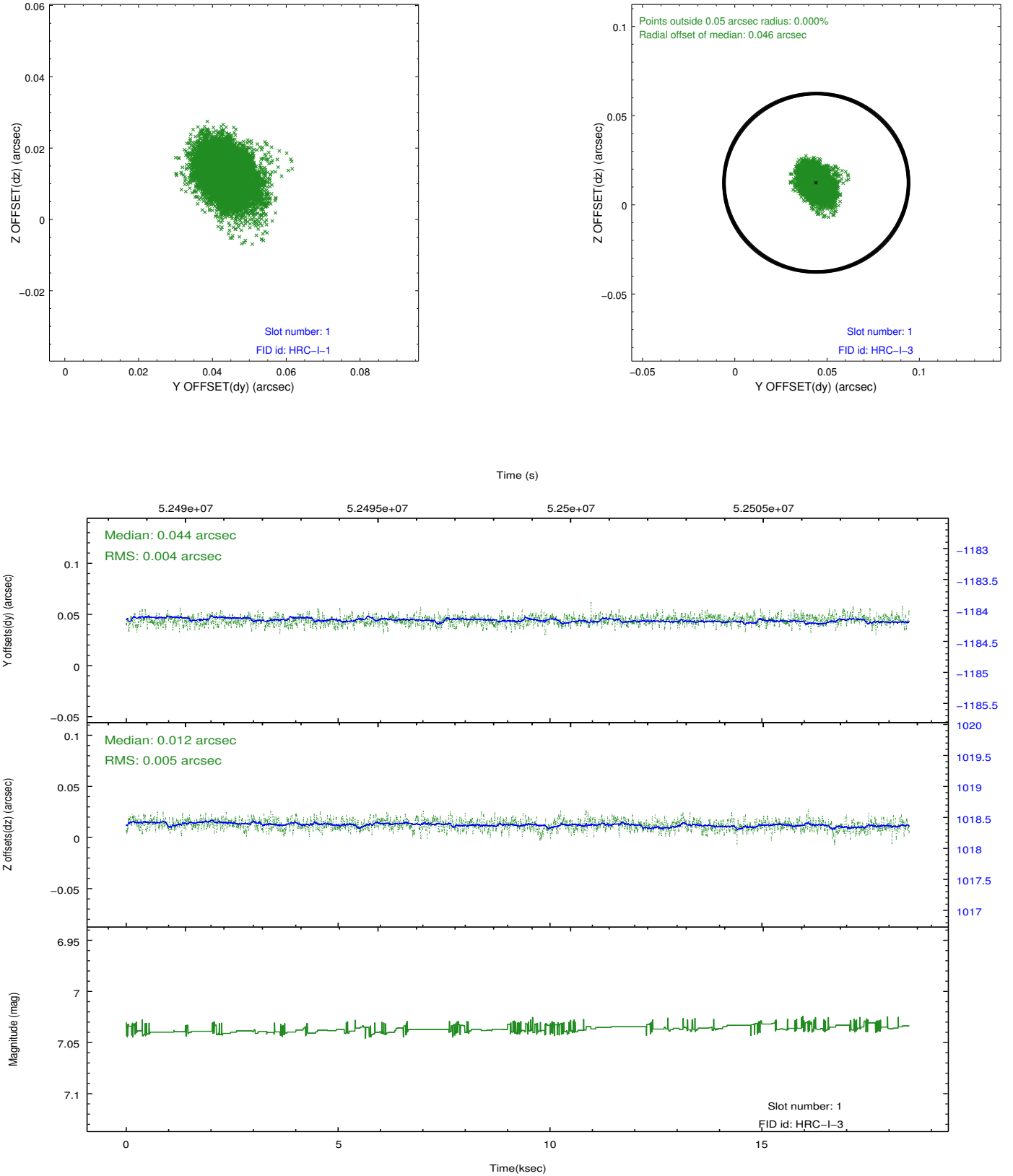


2.5 FID Slots

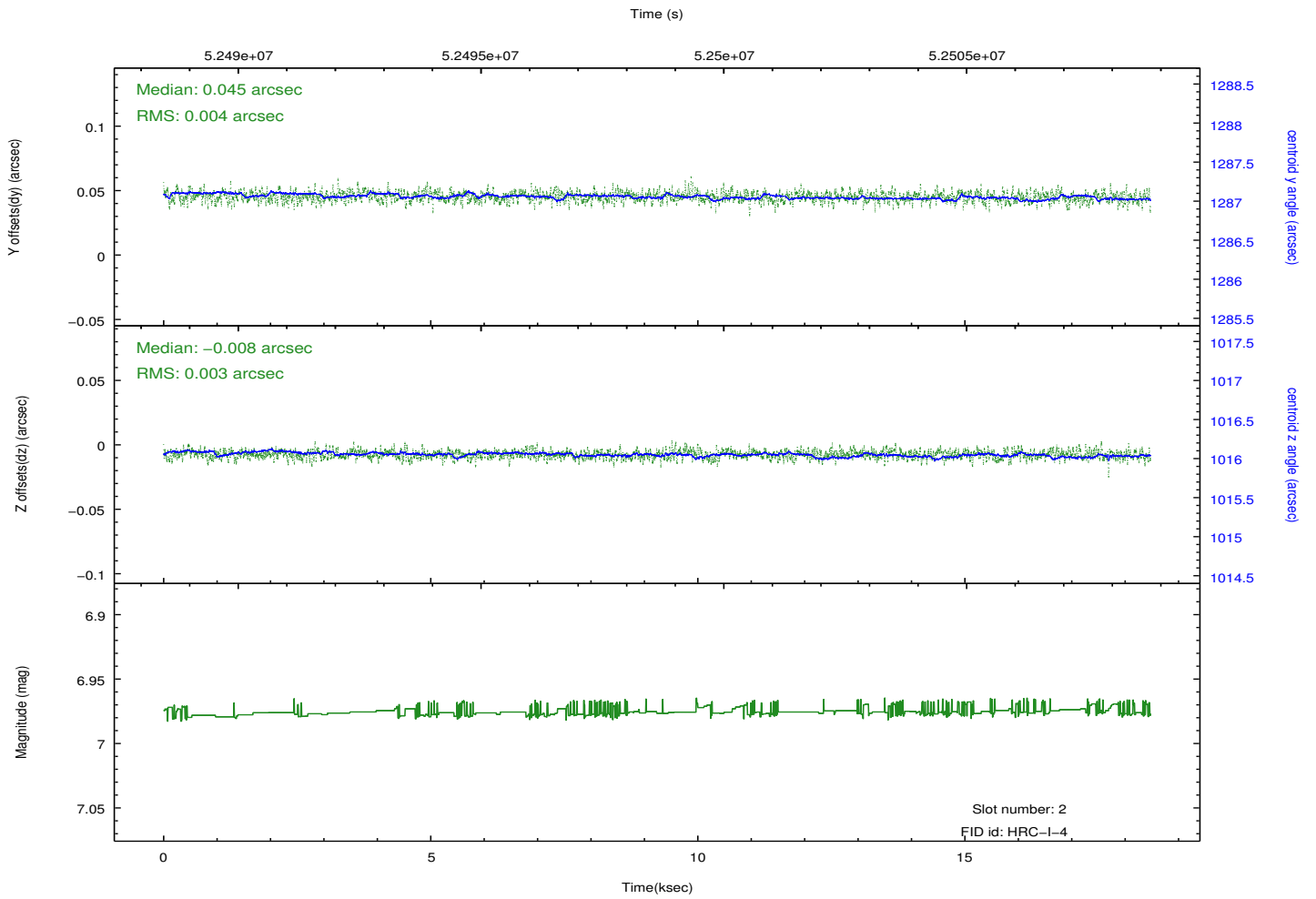
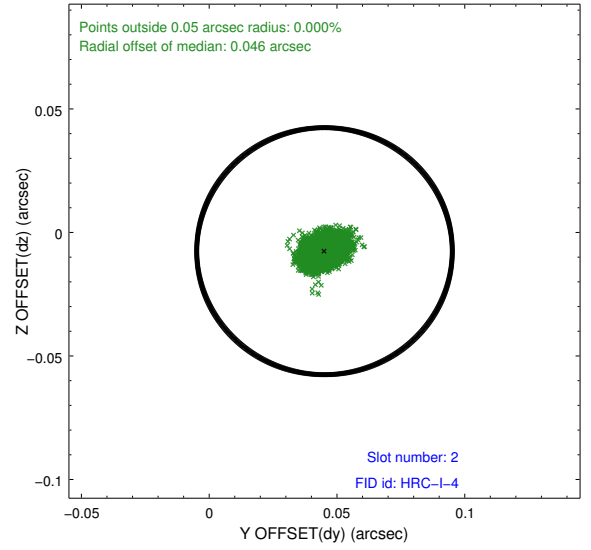
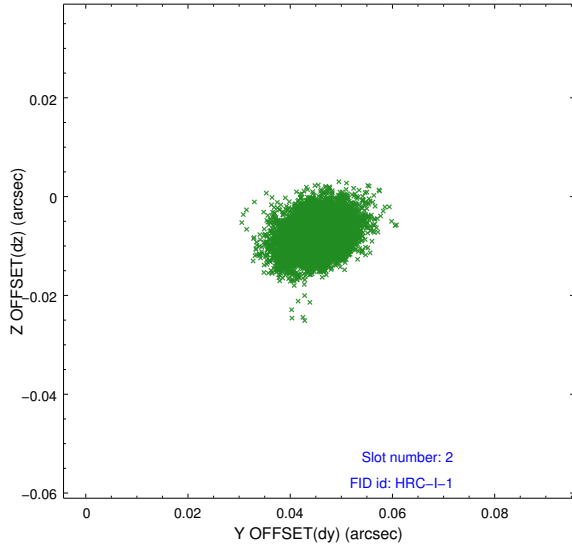
2.5.1 Slot 0



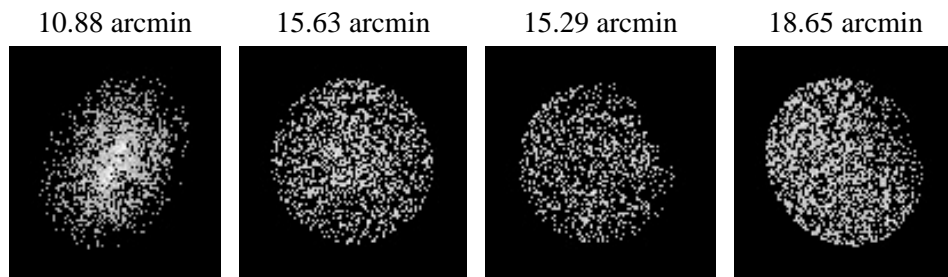
2.5.2 Slot 1



2.5.3 Slot 2



3 Point Sources



A Summary

A.1 Status

V&V Scientist	Joy Nichols
V&V Date (YYYY-MM-DD)	2010.01.20
V&V Edition	1
V&V Disposition and Status	OK
V&V Charge Time	17.79

A.2 Comments

HRC-I focus test.