

V&V Reference Report

L2 ASCDS Version : 8.4.3

Observation 13392 - L2 Version 3
Chandra X-Ray Center

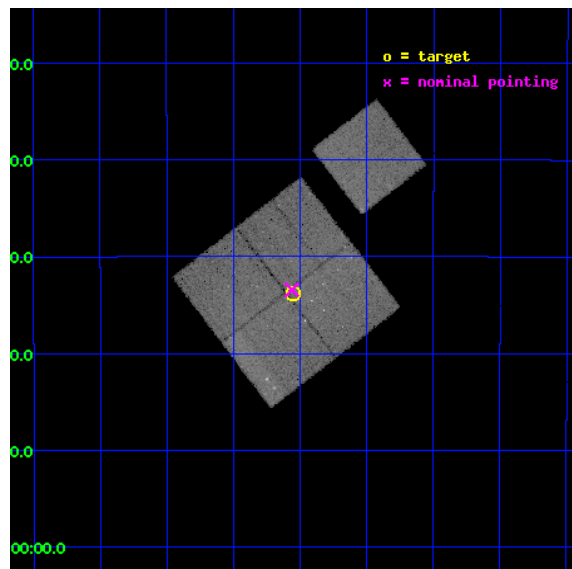
L2 Processing Date : Feb 23 2012

Contents

1	Front	2
2	OBI	3
2.1	OBI	3
2.1.1	Images	3
2.1.2	Bias	3
2.1.3	Parameters	4
2.1.4	Events	4
2.2	Compared Parameters	5
2.3	Aspect	6
2.4	Star Slots	9
2.4.1	Slot 3	9
2.4.2	Slot 5	10
2.4.3	Slot 6	11
2.5	FID Slots	12
2.5.1	Slot 0	12
2.5.2	Slot 1	13
2.5.3	Slot 2	14
A	Summary	15
A.1	Status	15
A.2	Comments	15

1 Front

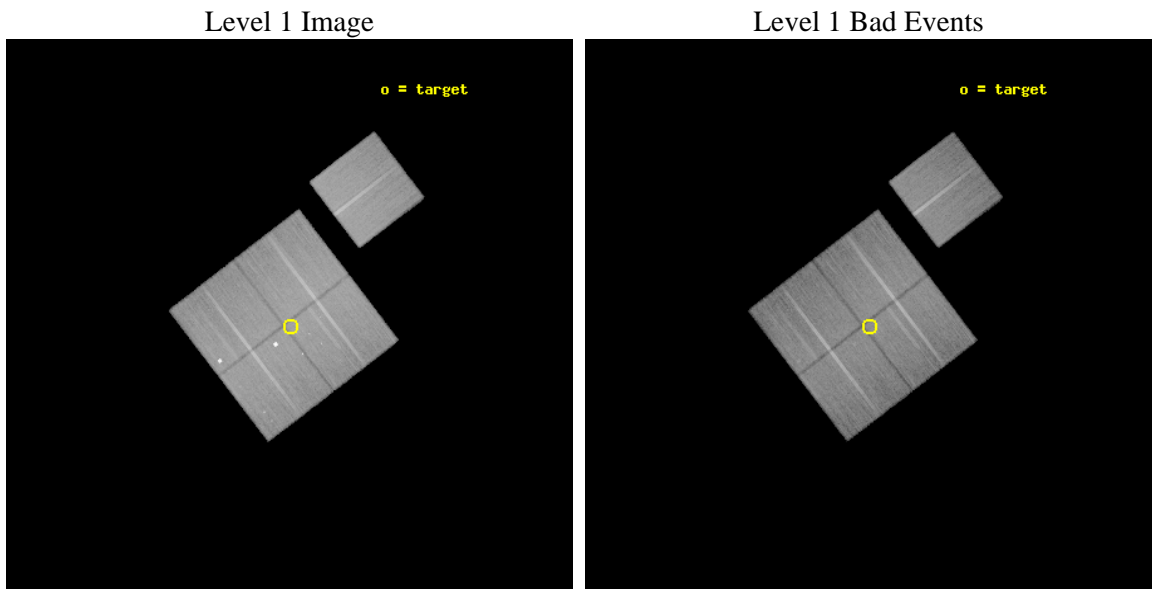
seq_num	801079	Sequence number
obs_id	13392	Observation id
title	The outskirts of Abell 133	Proposal title
observer	Dr Stephen Murray	Principal investigator
object	A133F	Source name
dtcycle	0	
cycle	P	events from which exps? Prim/Second/Both
ra_targ	15.639195	Observer's specified target RA [deg]
dec_targ	-21.562879	Observer's specified target Dec [deg]
ra_nom	15.640550210575	Nominal RA [deg]
dec_nom	-21.557284497111	Nominal Dec [deg]
roll_nom	52.4872634203	Nominal Roll [deg]
revision	3	Processing version of data
ontime	50550.736946166	Sum of GTIs [s]
livetime	49890.254353053	Livetime [s]
ontime0	50550.61386621	Sum of GTIs [s]
ontime1	50553.795906544	Sum of GTIs [s]
ontime2	50550.695916295	Sum of GTIs [s]
ontime3	50550.736946166	Sum of GTIs [s]
ontime6	50556.854866922	Sum of GTIs [s]
l2events	153272	Number of level 2 events



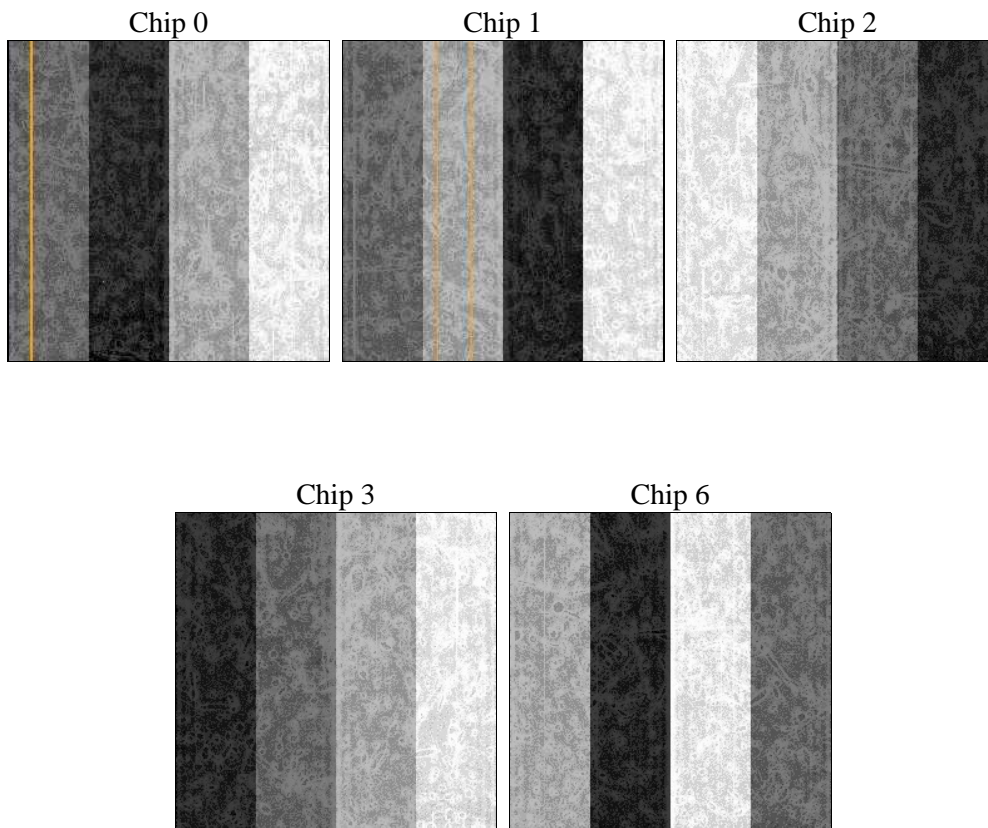
2 OBI

2.1 OBI

2.1.1 Images



2.1.2 Bias



2.1.3 Parameters

obi_num	0	Obi number	sched_exp_time	50500.000000	[s] Scheduled observation exposure time
ascdsver	8.4.3	Processing system revision	ontime	50550.736946166	Sum of GTIs [s]
caldsver	4.4.8	 	ontime0	50550.61386621	Sum of GTIs [s]
date	2012-02-23T04:45:05	Date and time of file creation	ontime1	50553.795906544	Sum of GTIs [s]
revision	3	Processing version of data	ontime2	50550.695916295	Sum of GTIs [s]
			ontime3	50550.736946166	Sum of GTIs [s]
			ontime6	50556.854866922	Sum of GTIs [s]
			l1events	1538164	Number of level 1 events

2.1.4 Events

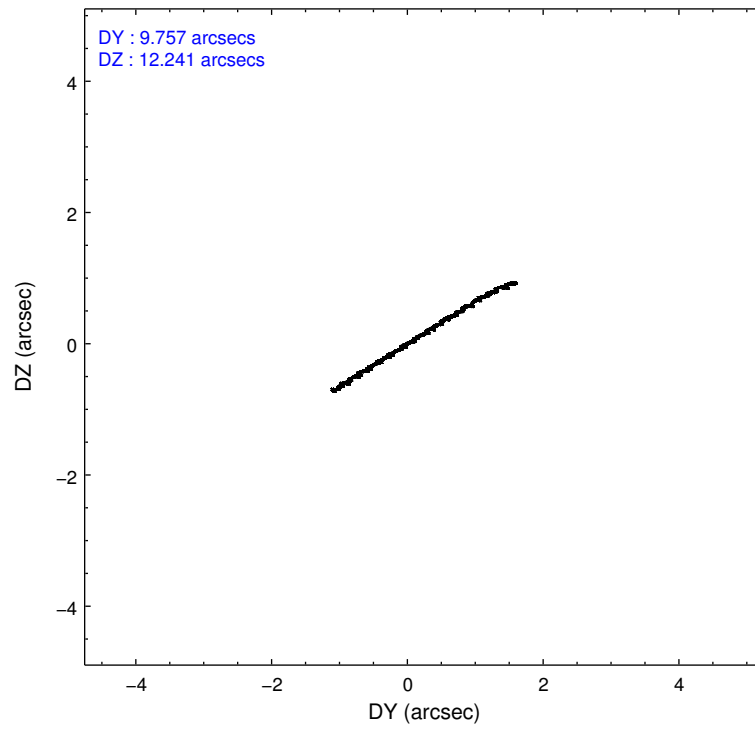
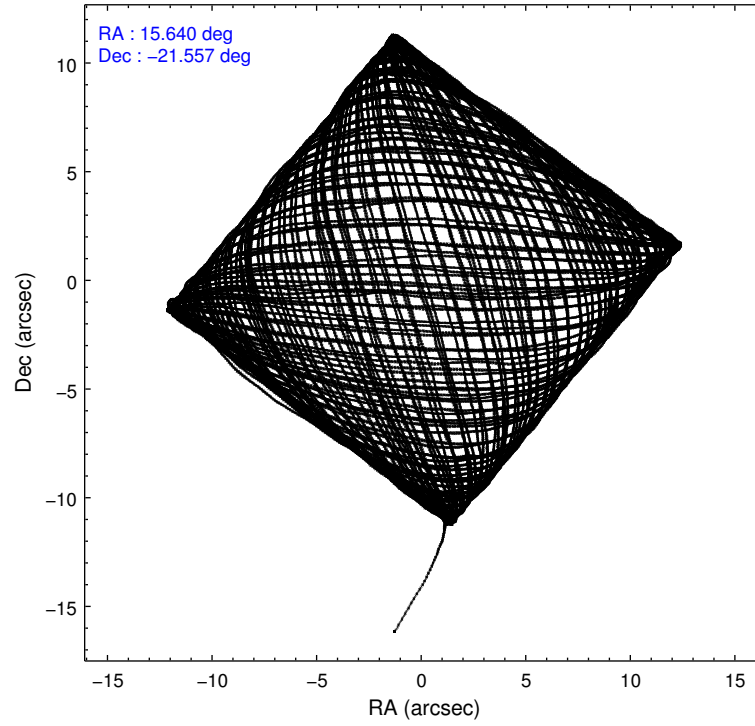
	ccd 0	ccd 1	ccd 2	ccd 3	ccd 6
level 1 events	292832	312840	312924	308025	311543
rejected events	248144	254965	278906	273799	275786
rejected %	84%	81%	89%	88%	88%

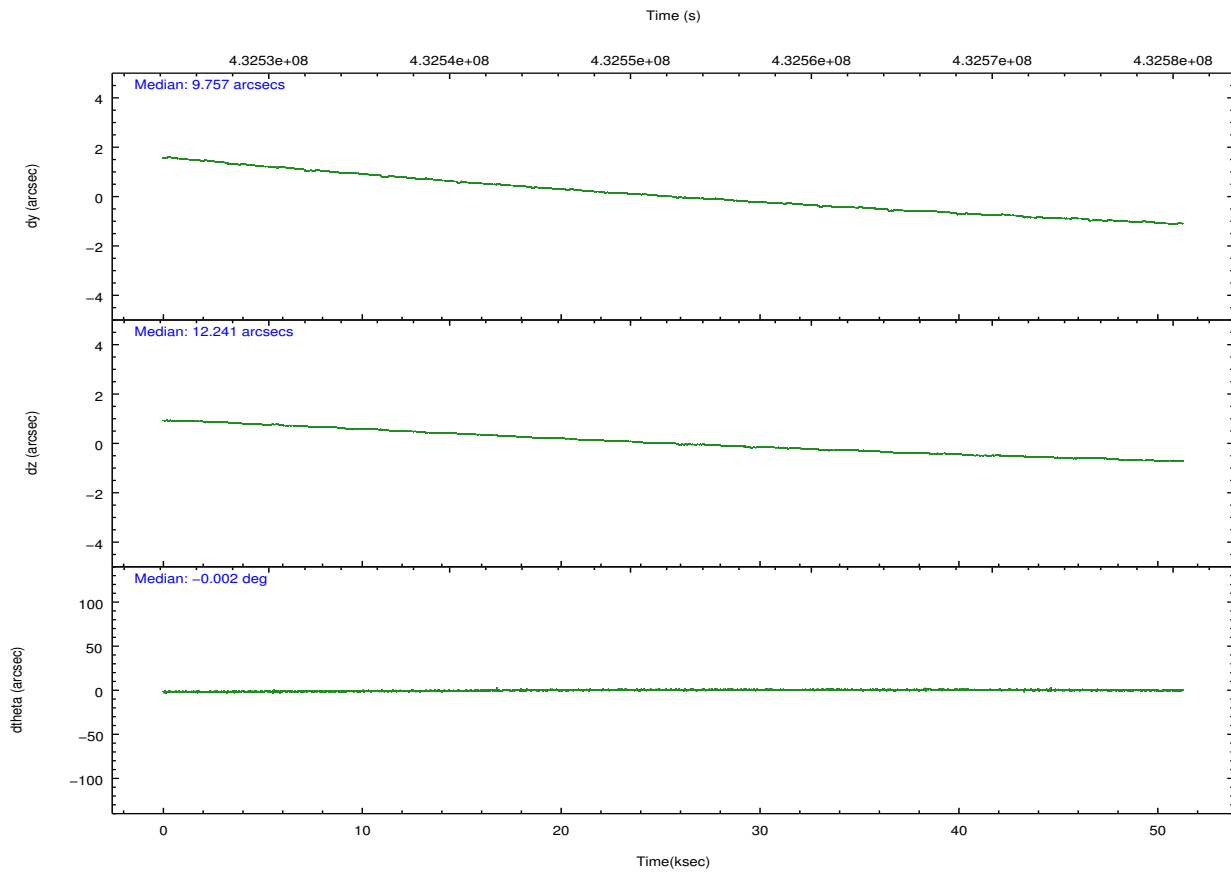
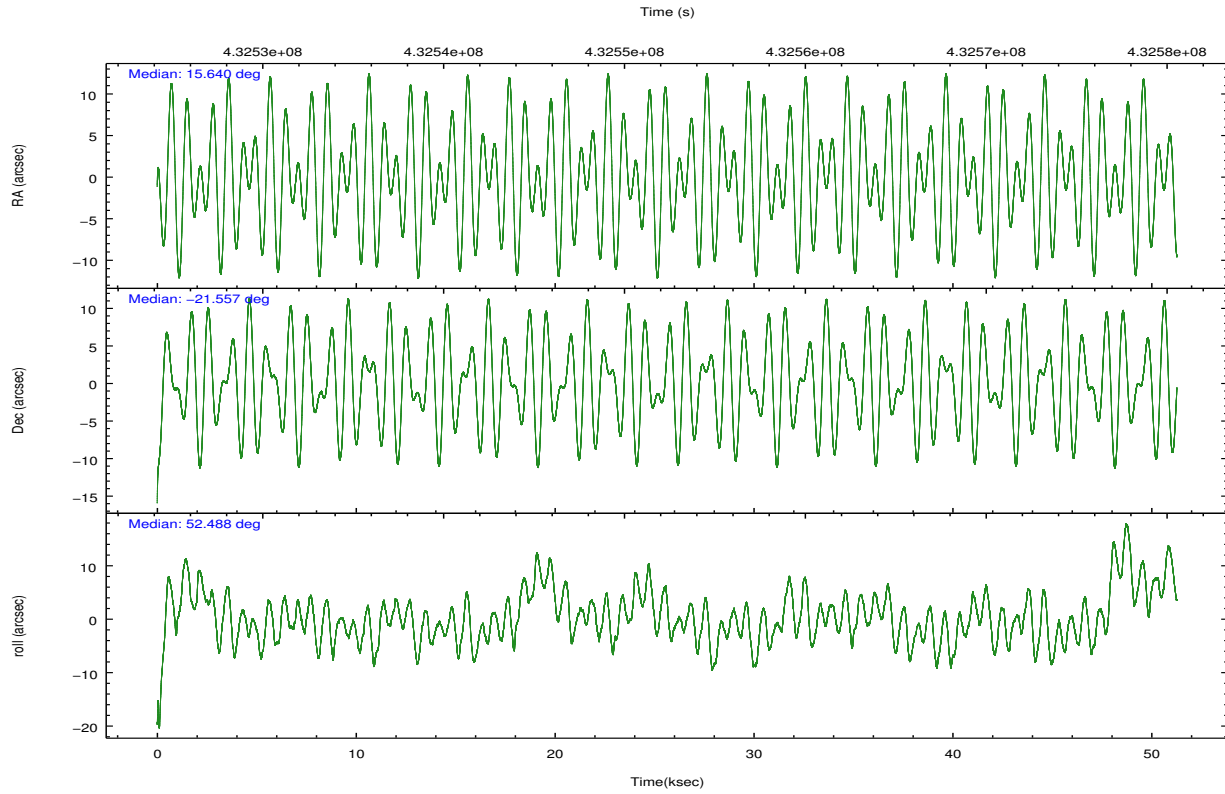
	ccd 0	ccd 1	ccd 2	ccd 3	ccd 6
grade 0 events	21791	31869	11961	12077	12266
	7%	10%	3%	3%	3%
grade 1 events	223	250	183	186	146
	0%	0%	0%	0%	0%
grade 2 events	8749	9606	8453	7703	7942
	2%	3%	2%	2%	2%
grade 3 events	3709	4073	3495	3642	3841
	1%	1%	1%	1%	1%
grade 4 events	3488	4045	3499	3690	3571
	1%	1%	1%	1%	1%
grade 5 events	13425	14609	12803	15316	14685
	4%	4%	4%	4%	4%
grade 6 events	6957	8287	6610	7118	8141
	2%	2%	2%	2%	2%
grade 7 events	234490	240101	265920	258293	260951
	80%	76%	84%	83%	83%

2.2 Compared Parameters

Parameter	Planned	Actual	Parameter	Planned	Actual
Instrument	ACIS	ACIS	Obspar format version number	7	7
Detector	ACIS-01236	ACIS-01236	Obspar file type	PREDICTED	ACTUAL
Grating	NONE	NONE	Obspar update status	NONE	UPDATED
Data mode	VFAINT	VFAINT	CCD I0 on	Y	Y
Observation mode	POINTING	POINTING	CCD I1 on	Y	Y
[deg] Pointing RA	15.636810	15.64055021057501	CCD I2 on	Y	Y
[deg] Pointing Dec	-21.584550	-21.55728449711088	CCD I3 on	Y	Y
[deg] Pointing Roll	52.277198	52.48726342030021	CCD S0 on	N	N
[mm] SIM focus pos	-0.782348	-0.7809083437167272	CCD S1 on	N	N
[mm] SIM defocus	0	0.001439871863259334	CCD S2 on	O1	Y
[mm] SIM translation stage pos	-233.592463	-233.5874344608287	CCD S3 on	N	N
[mm] SIM translation stage offset	0	-0.005018542100998502	CCD S4 on	N	N
[s] Observation start time (MET)	432527482.184000	432525354.72236	CCD S5 on	N	N
Observation start date	2011-09-16T02:30:16	2011-09-16T01:55:54	Number of optional ACIS chips dropped	0	0
[s] Observation end time (MET)	432577982.184000	432578960.68767	On-chip summing requested	N	N
Observation end date	2011-09-16T16:31:56	2011-09-16T16:49:20	Subarray requested	NONE	NONE
Read mode	TIMED	TIMED	Alternating exposures requested	N	N
			[s] Primary exposure time	0.000000	3.1

2.3 Aspect



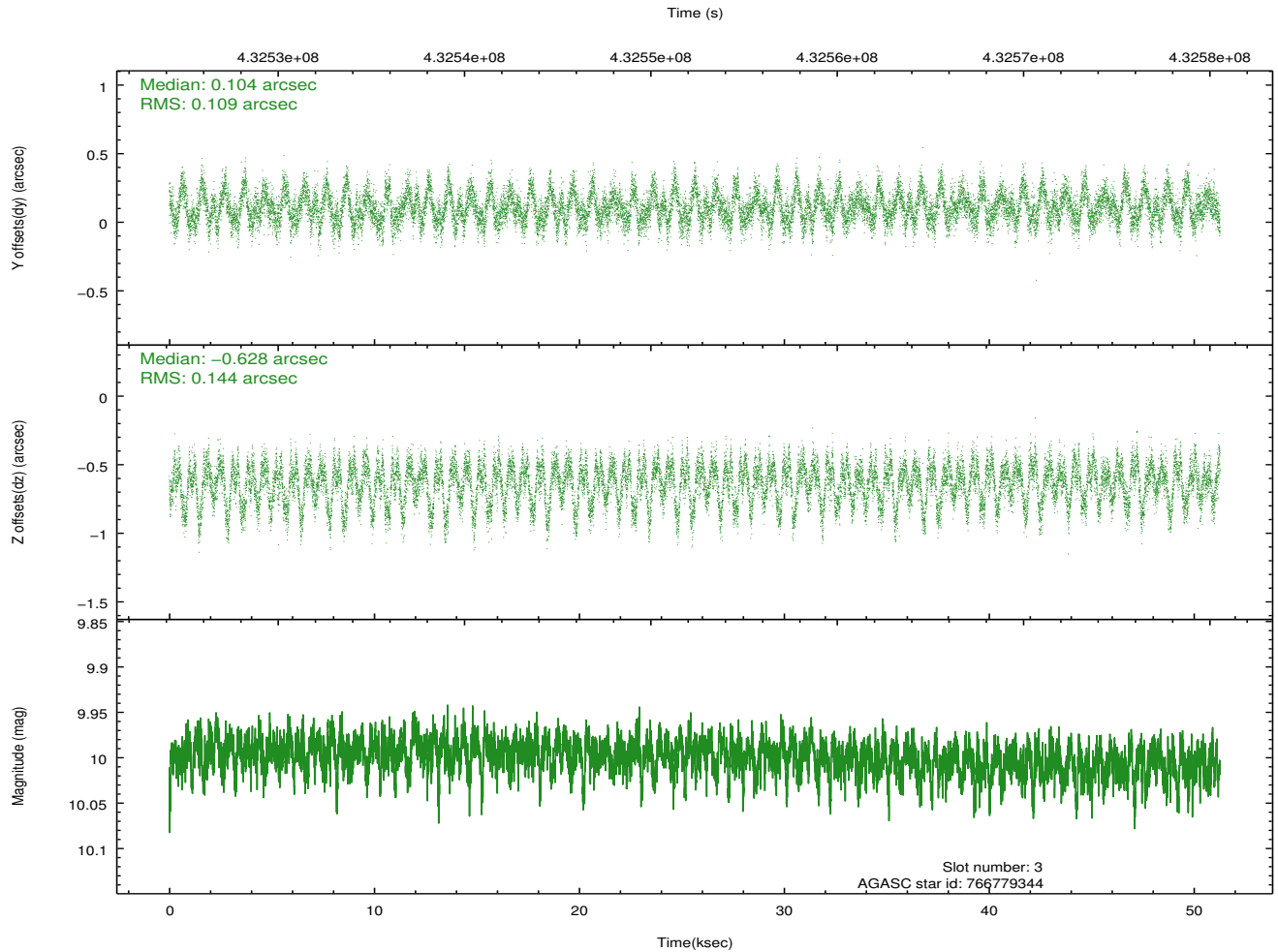
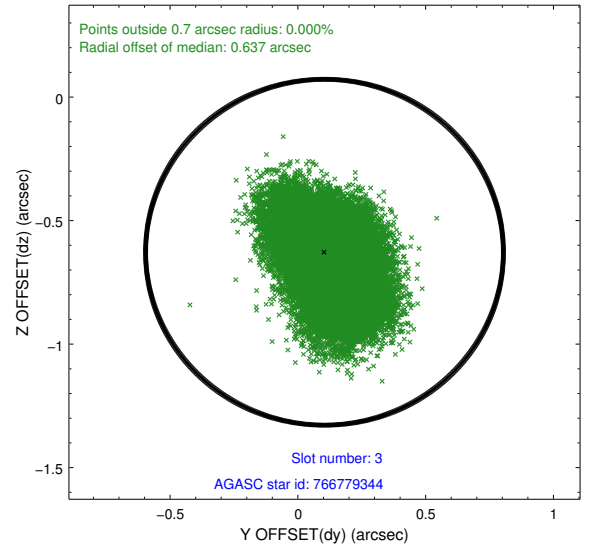
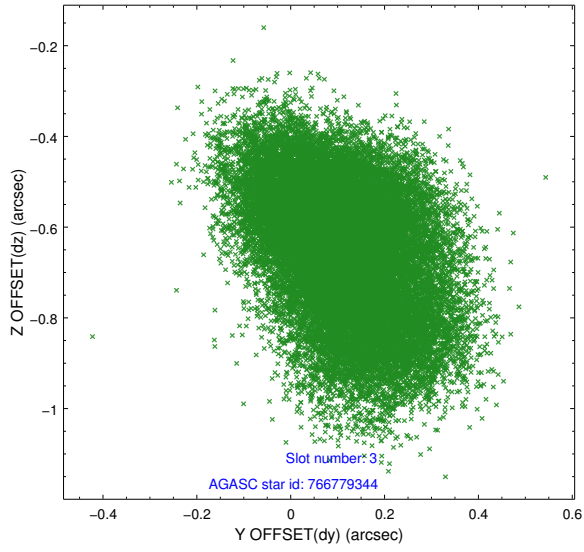


Slot Statistics

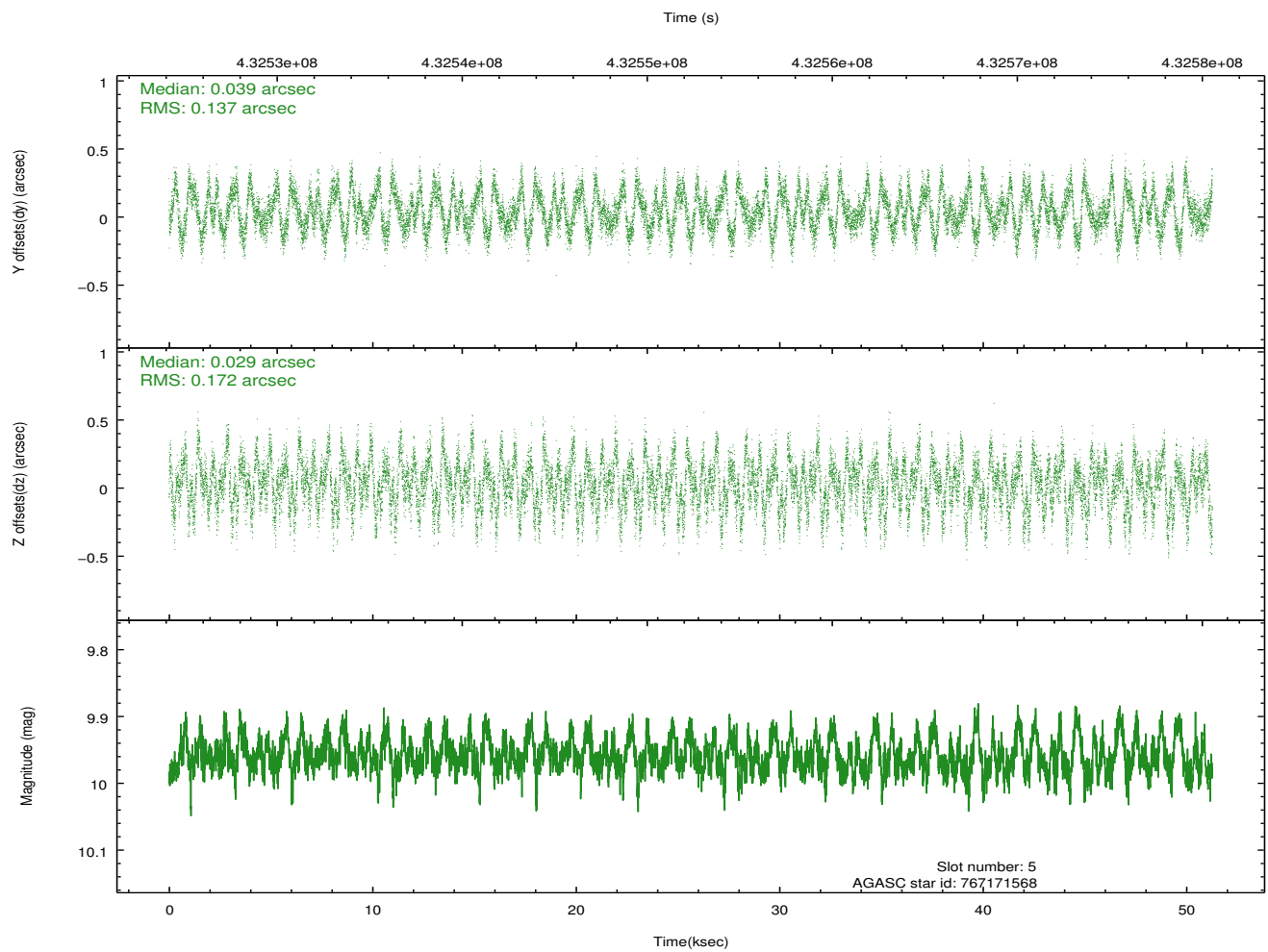
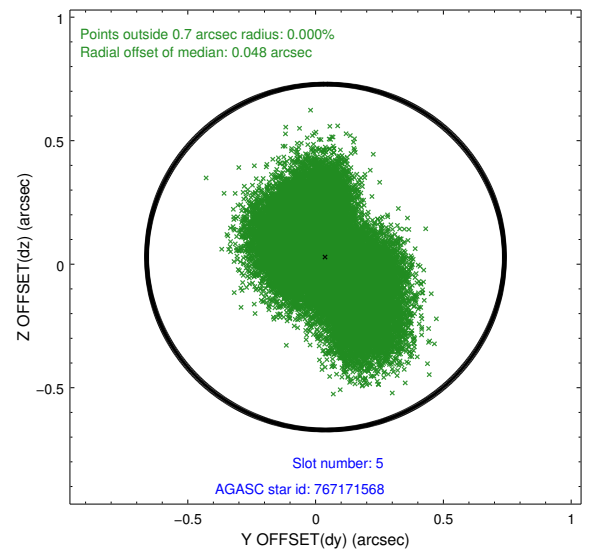
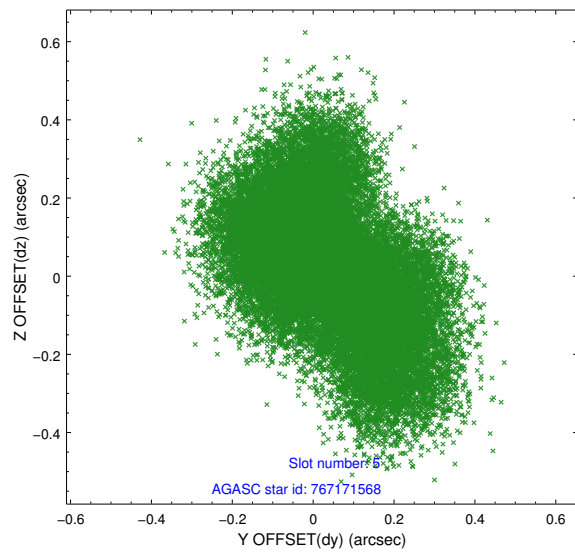
slot	status	id	mag	n_pts	med_dy	med_dz	dr1	dr2	ra	dec	mean_y	mean_z
0	FID	ACIS-I-1	7.08	12506	0.095	-0.054	0.034	0.049	0.000000	0.000000	929.85	-835.87
1	FID	ACIS-I-5	7.06	12505	-0.242	0.088	0.013	0.024	0.000000	0.000000	-1818.59	1061.78
2	FID	ACIS-I-6	7.07	12505	0.057	0.036	0.024	0.032	0.000000	0.000000	395.40	1706.20
3	GUIDE	766779344	10.00	24969	0.104	-0.628	0.193	0.317	15.380905	-21.452302	-147.87	968.50
4	OMITTED		0.00	0	0.000	0.000	0.000	0.000	0.000000	0.000000	0.00	0.00
5	GUIDE	767171568	9.96	24967	0.039	0.029	0.237	0.374	16.035890	-22.108834	-679.30	-2208.57
6	GUIDE	766777184	7.88	25011	-0.148	0.631	0.108	0.176	15.615560	-21.610598	-115.88	-3.12
7	OMITTED		0.00	0	0.000	0.000	0.000	0.000	0.000000	0.000000	0.00	0.00

2.4 Star Slots

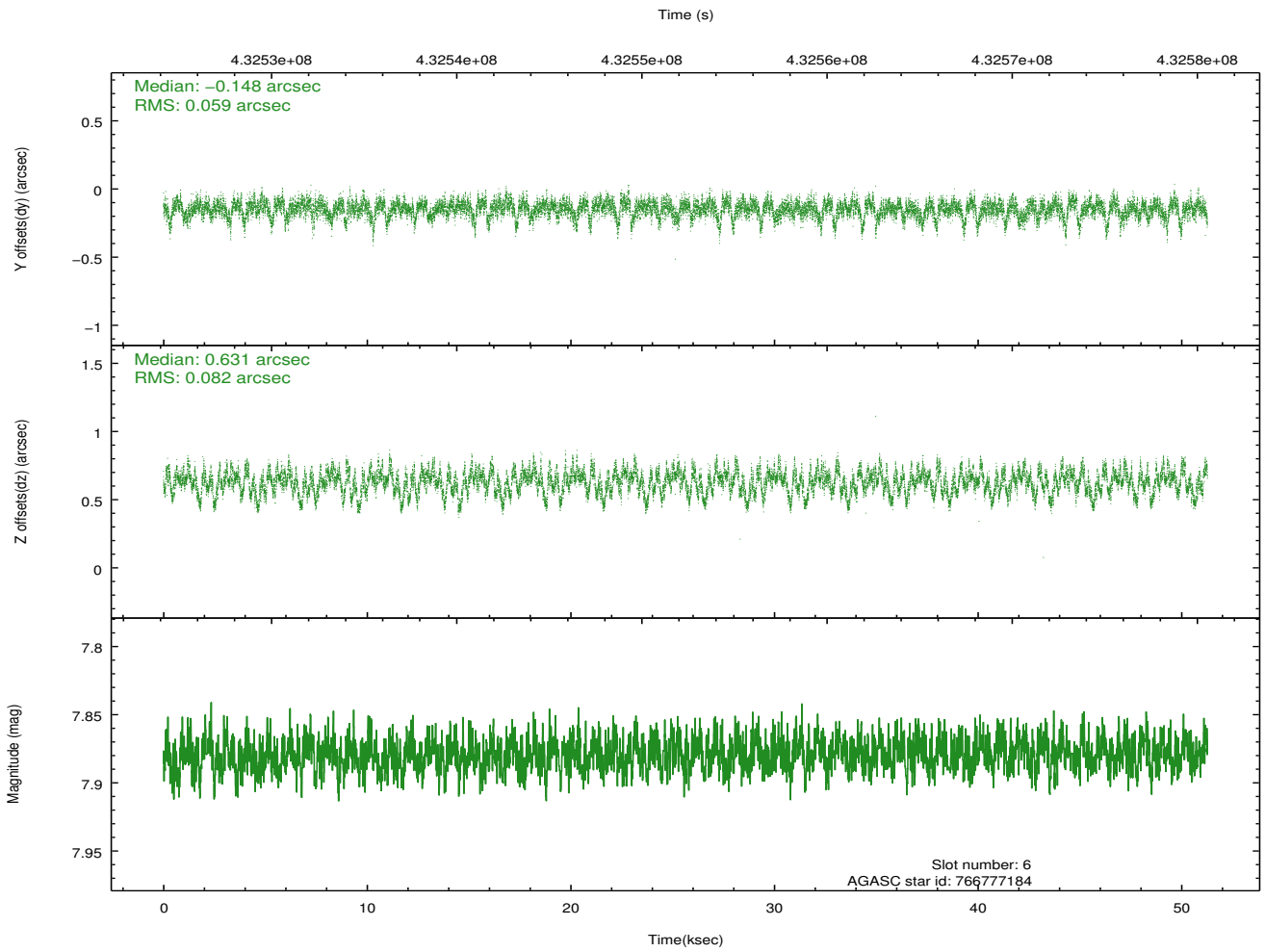
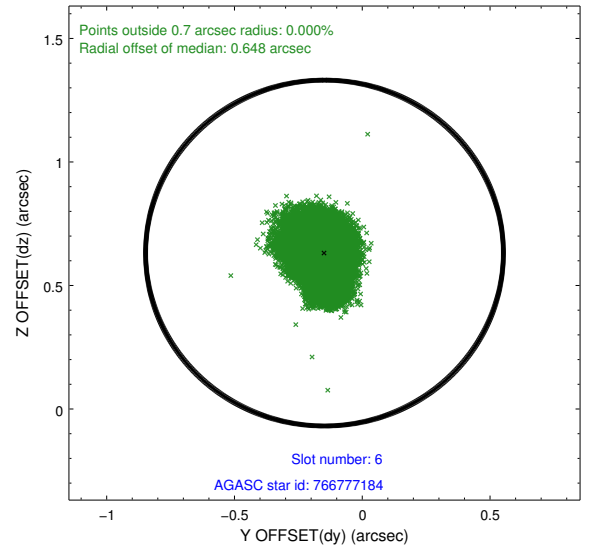
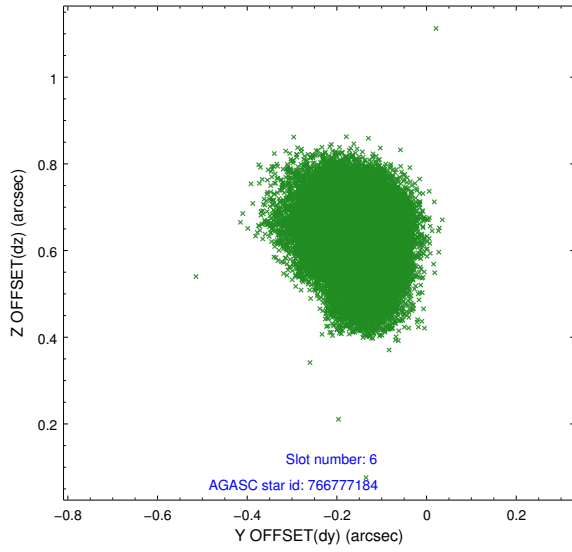
2.4.1 Slot 3



2.4.2 Slot 5

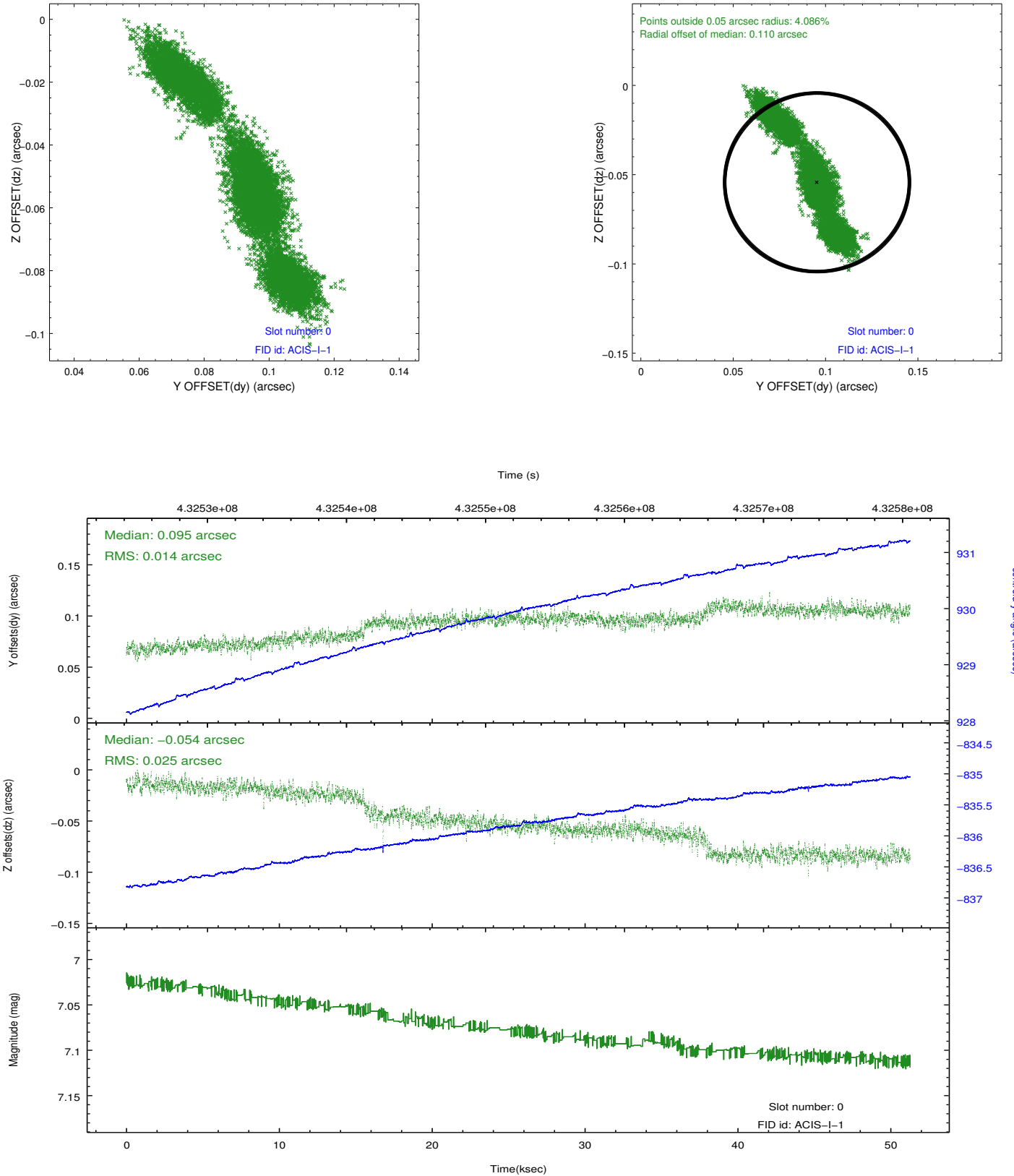


2.4.3 Slot 6

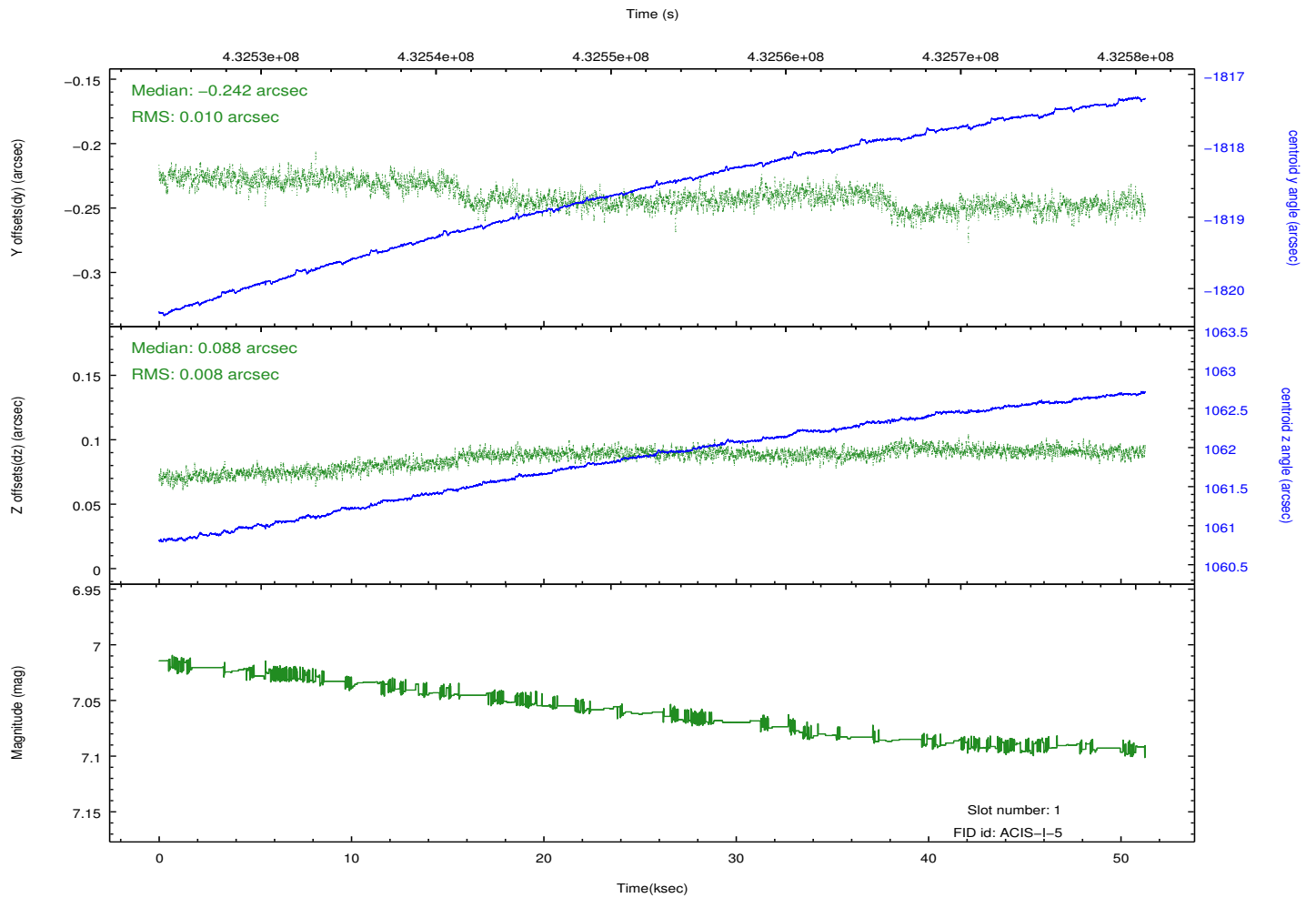
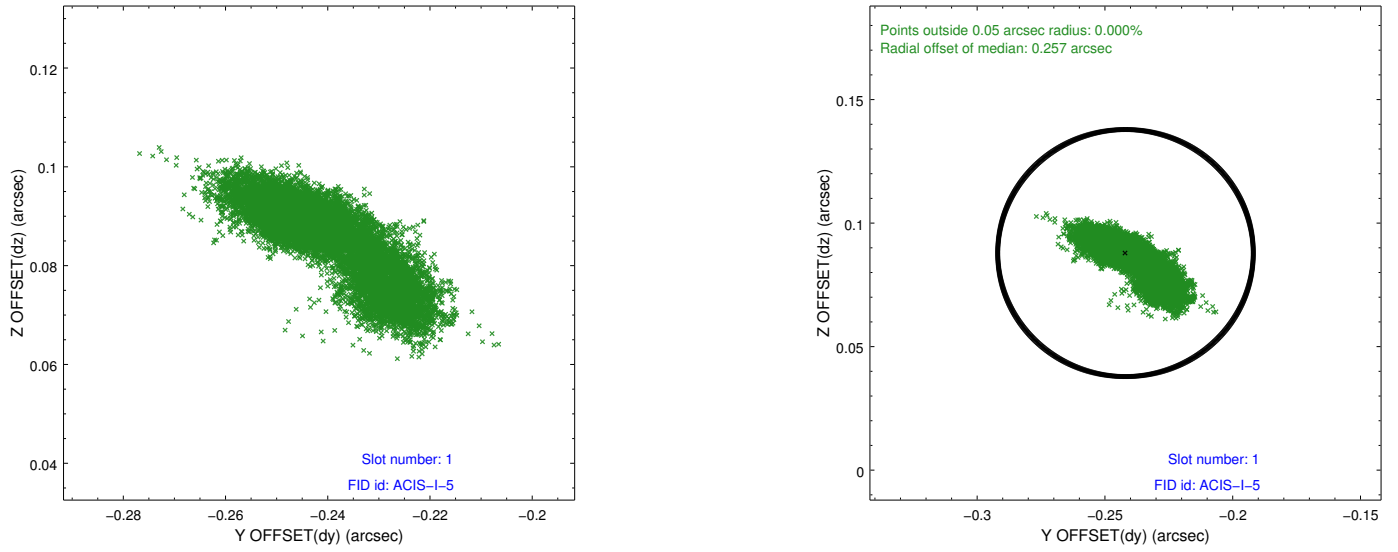


2.5 FID Slots

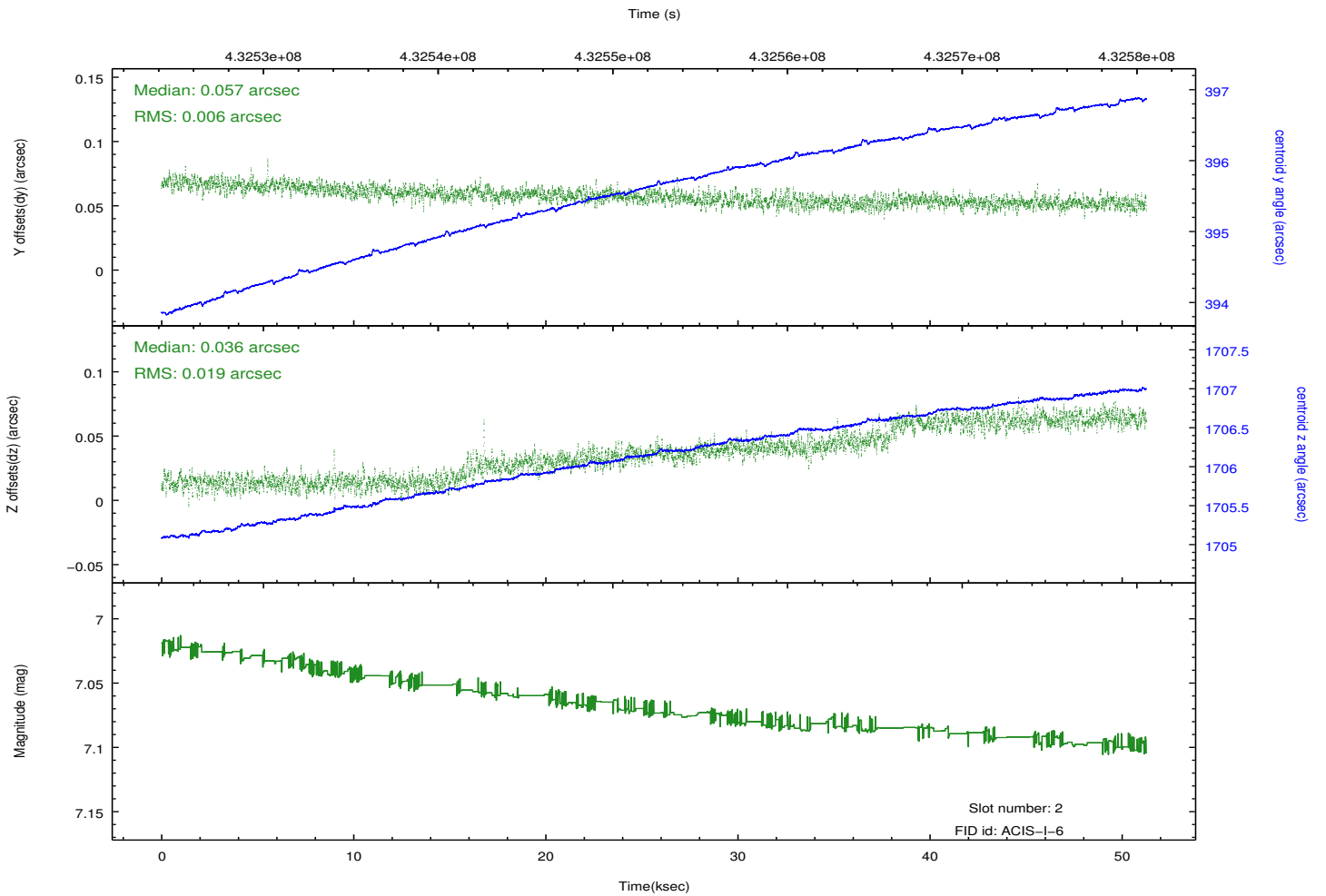
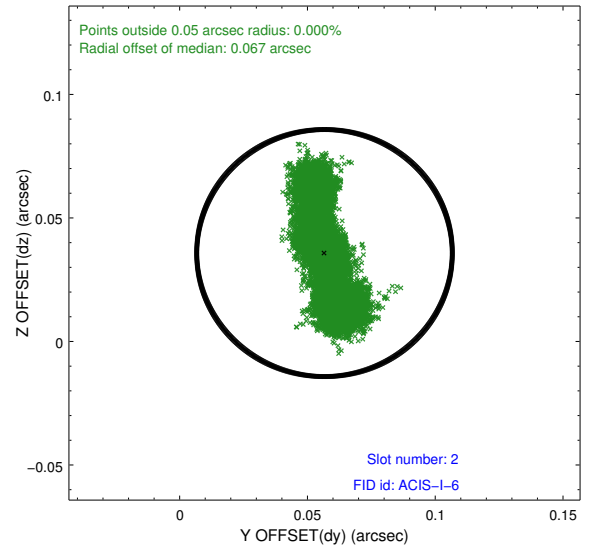
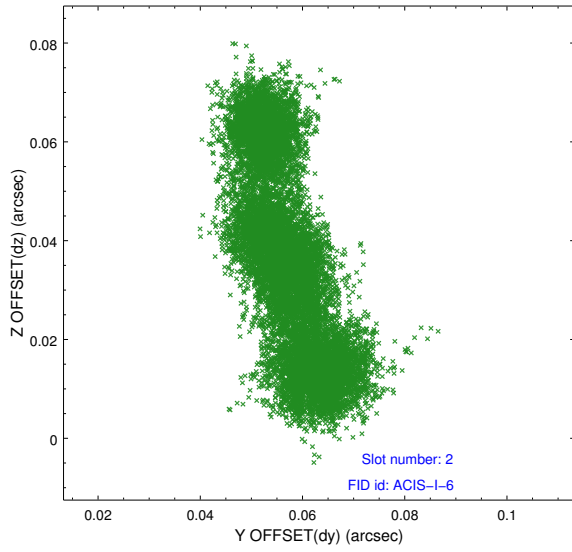
2.5.1 Slot 0



2.5.2 Slot 1



2.5.3 Slot 2



A Summary

A.1 Status

V&V Scientist	Jen Lauer
V&V Date (YYYY-MM-DD)	2012.02.23
V&V Edition	1
V&V Disposition and Status	OK
V&V Charge Time	50.550736947417

A.2 Comments

Guide stars in slots 4 and 7 were removed from aspect solution due to poor star tracking. The aspect solution is expected to be improved by removing these 2 stars from the solution.