

# V&V Reference Report

## L2 ASCDS Version : 8.4.3

Observation 14002 - L2 Version 2  
Chandra X-Ray Center

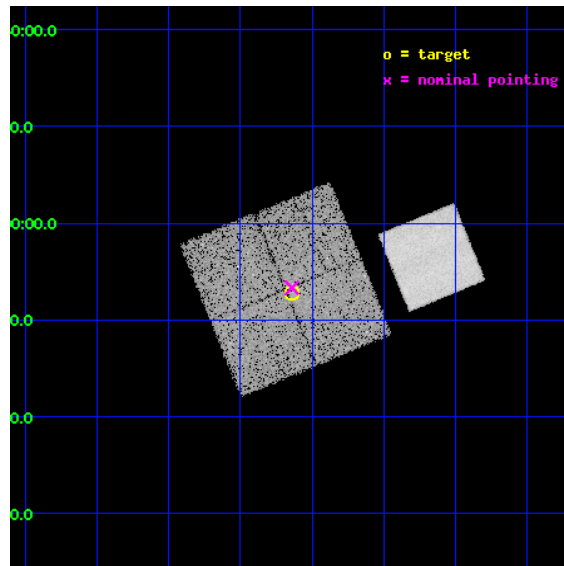
L2 Processing Date : Feb 27 2012

## Contents

<b>1</b>	<b>Front</b>	<b>2</b>
<b>2</b>	<b>OBI</b>	<b>3</b>
2.1	OBI . . . . .	3
2.1.1	Images . . . . .	3
2.1.2	Bias . . . . .	3
2.1.3	Parameters . . . . .	4
2.1.4	Events . . . . .	4
2.2	Compared Parameters . . . . .	5
2.3	Aspect . . . . .	6
2.4	Star Slots . . . . .	9
2.4.1	Slot 3 . . . . .	9
2.4.2	Slot 4 . . . . .	10
2.4.3	Slot 5 . . . . .	11
2.4.4	Slot 6 . . . . .	12
2.4.5	Slot 7 . . . . .	13
2.5	FID Slots . . . . .	14
2.5.1	Slot 0 . . . . .	14
2.5.2	Slot 1 . . . . .	15
2.5.3	Slot 2 . . . . .	16
<b>A</b>	<b>Summary</b>	<b>17</b>
A.1	Status . . . . .	17
A.2	Comments . . . . .	17

# 1 Front

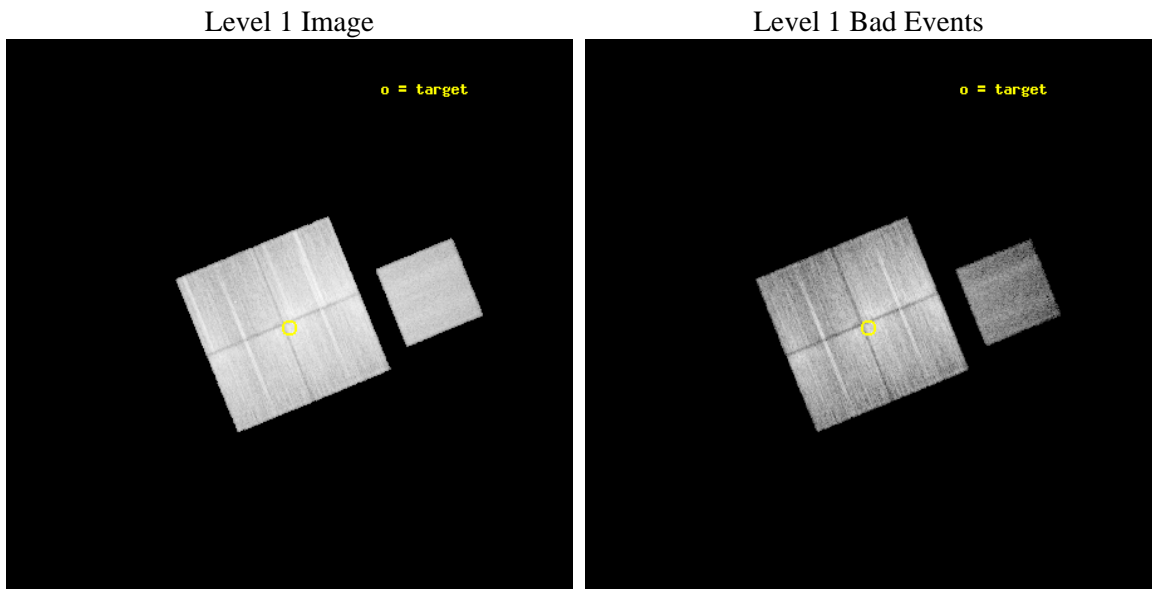
seq_num	801182	Sequence number
obs_id	14002	Observation id
title	GAMA groups and cosmic feedback	Proposal title
observer	Prof Trevor Ponman	Principal investigator
object	G12-11	Source name
dtcycle	0	&#160
cycle	P	events from which exps? Prim/Second/Both
ra_targ	176.534583	Observer's specified target RA [deg]
dec_targ	-1.119417	Observer's specified target Dec [deg]
ra_nom	176.5352737046	Nominal RA [deg]
dec_nom	-1.1113719376522	Nominal Dec [deg]
roll_nom	67.758416438631	Nominal Roll [deg]
revision	2	Processing version of data
ontime	16032.069135249	Sum of GTIs [s]
livetime	15822.598349359	Livetime [s]
ontime0	16038.227995813	Sum of GTIs [s]
ontime1	16038.269035816	Sum of GTIs [s]
ontime2	16038.310075819	Sum of GTIs [s]
ontime3	16032.069135249	Sum of GTIs [s]
ontime7	16038.392155826	Sum of GTIs [s]
l2events	101349	Number of level 2 events



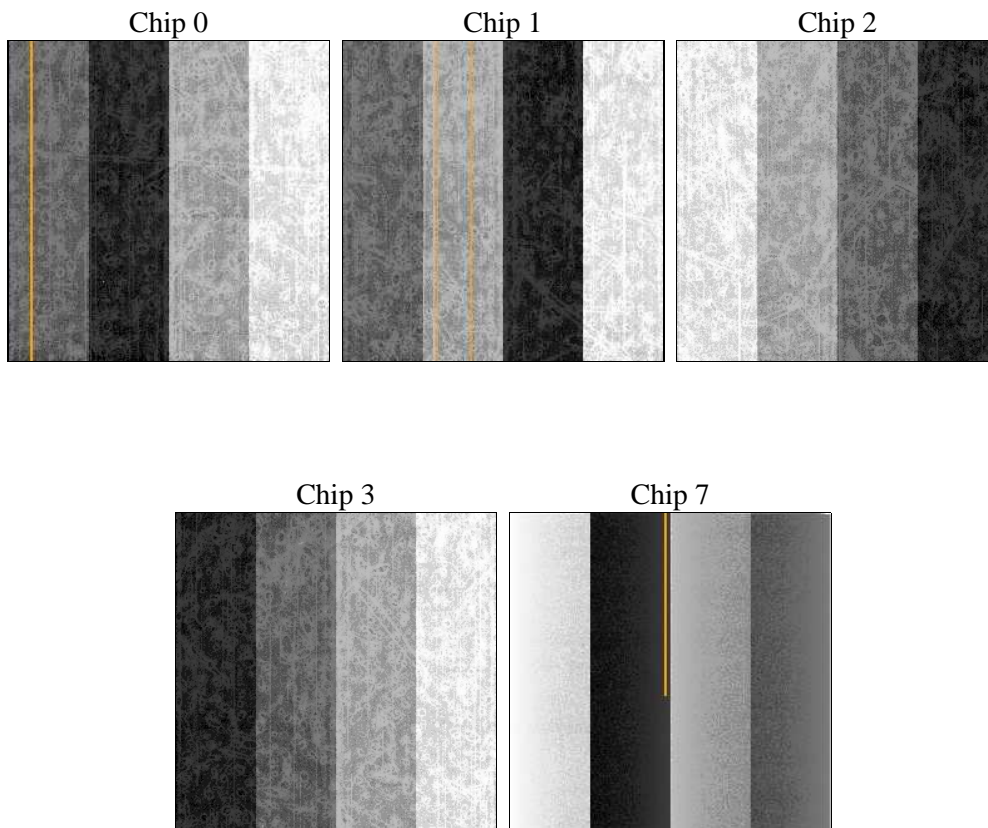
## 2 OBI

### 2.1 OBI

#### 2.1.1 Images



#### 2.1.2 Bias



### 2.1.3 Parameters

obi_num	1	Obi number	sched_exp_time	16000.000000	[s] Scheduled observation exposure time
ascdsver	8.4.3	Processing system revision	ontime	16032.069135249	Sum of GTIs [s]
caldbver	4.4.8	&#160	ontime0	16038.227995813	Sum of GTIs [s]
date	2012-02-27T13:12:14	Date and time of file creation	ontime1	16038.269035816	Sum of GTIs [s]
revision	2	Processing version of data	ontime2	16038.310075819	Sum of GTIs [s]
			ontime3	16032.069135249	Sum of GTIs [s]
			ontime7	16038.392155826	Sum of GTIs [s]
			l1events	890747	Number of level 1 events

### 2.1.4 Events

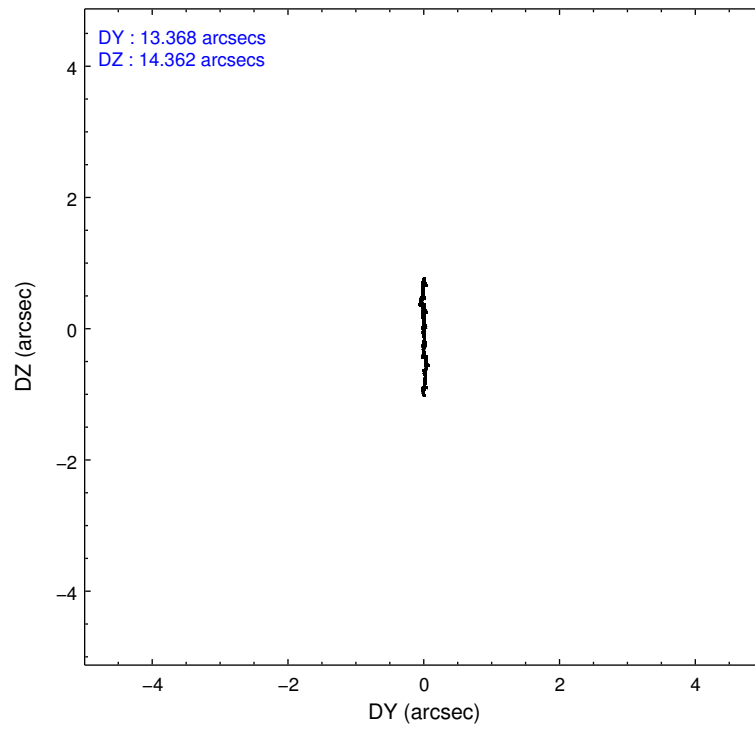
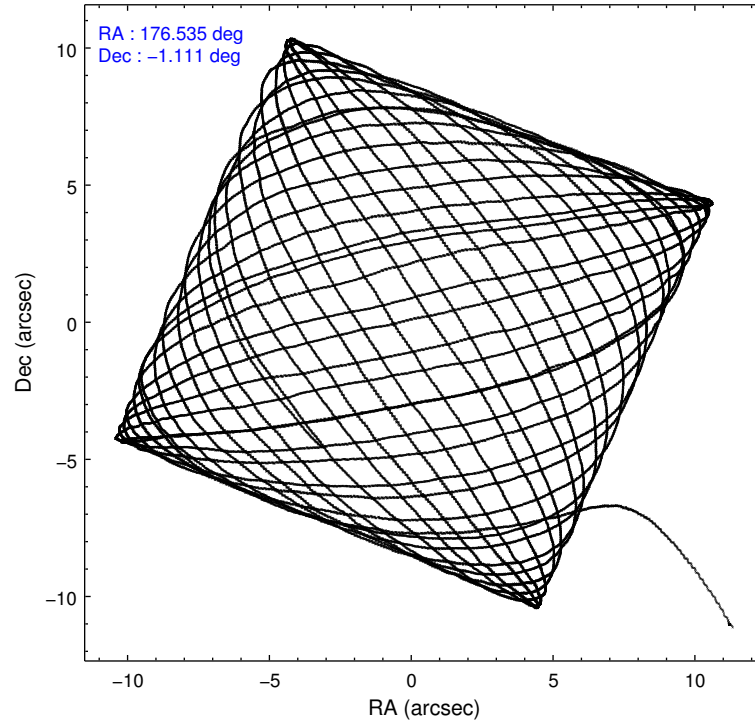
	ccd 0	ccd 1	ccd 2	ccd 3	ccd 7
level 1 events	154985	174177	231196	203688	126701
rejected events	132174	158895	201240	191653	63810
rejected %	85%	91%	87%	94%	50%

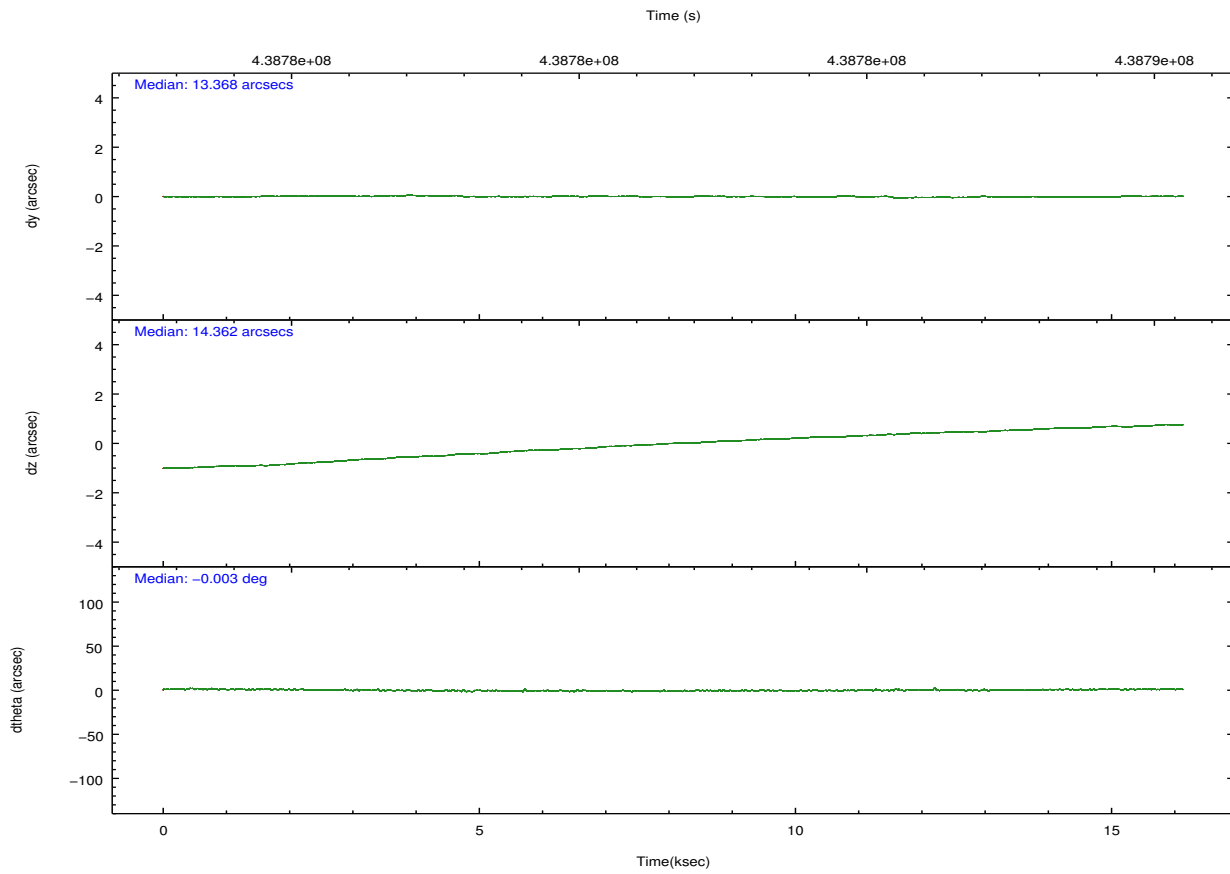
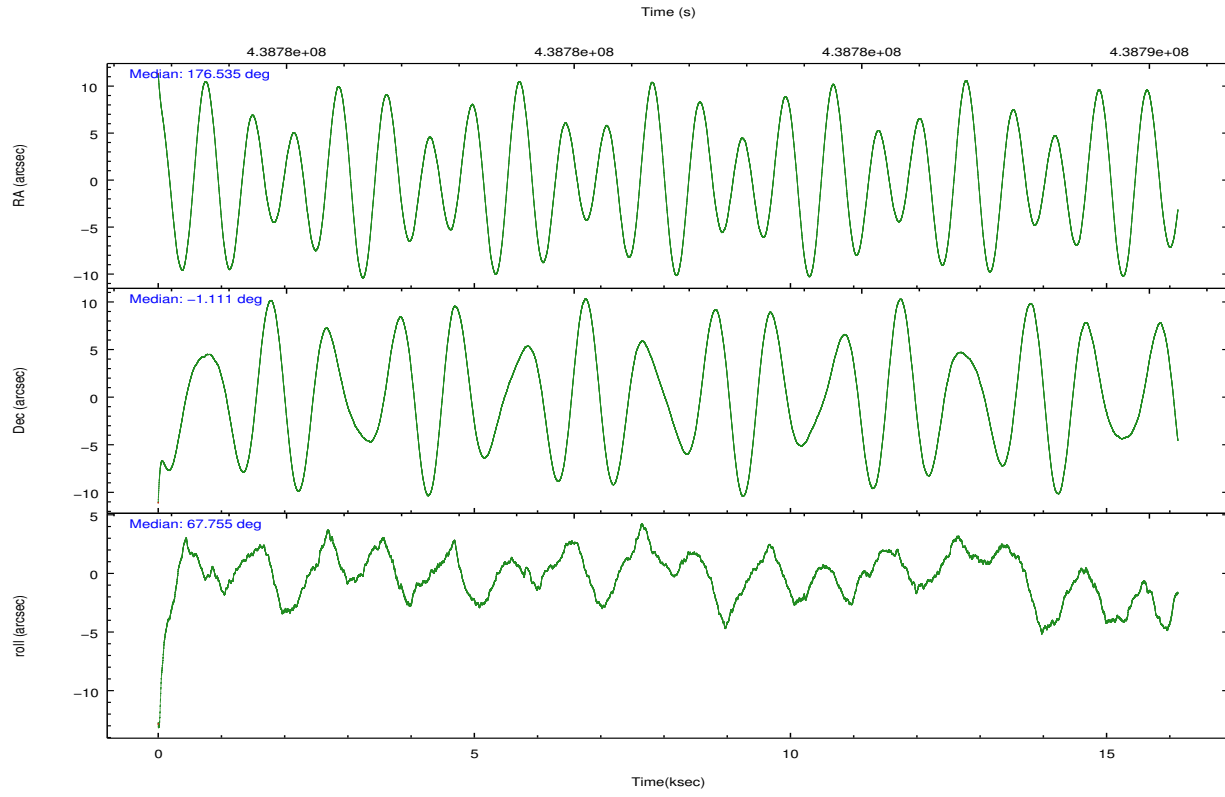
	ccd 0	ccd 1	ccd 2	ccd 3	ccd 7
grade 0 events	8741	5257	11532	4227	7263
	5%	3%	4%	2%	5%
grade 1 events	114	74	144	61	342
	0%	0%	0%	0%	0%
grade 2 events	9532	5261	11510	3705	17065
	6%	3%	4%	1%	13%
grade 3 events	1143	1168	1090	1038	5940
	0%	0%	0%	0%	4%
grade 4 events	1114	1203	2435	1041	5945
	0%	0%	1%	0%	4%
grade 5 events	3558	3668	3723	3926	12017
	2%	2%	1%	1%	9%
grade 6 events	2291	2406	3404	2029	26693
	1%	1%	1%	0%	21%
grade 7 events	128492	155140	197358	187661	51436
	82%	89%	85%	92%	40%

## 2.2 Compared Parameters

Parameter	Planned	Actual	Parameter	Planned	Actual
Instrument	ACIS	ACIS	Obspar format version number	7	7
Detector	ACIS-01237	ACIS-01237	Obspar file type	PREDICTED	ACTUAL
Grating	NONE	NONE	Obspar update status	NONE	UPDATED
Data mode	VFAINT	VFAINT	CCD I0 on	Y	Y
Observation mode	POINTING	POINTING	CCD I1 on	Y	Y
[deg] Pointing RA	176.539104	176.535273704604	CCD I2 on	Y	Y
[deg] Pointing Dec	-1.138595	-1.111371937652174	CCD I3 on	Y	Y
[deg] Pointing Roll	67.549819	67.75841643863077	CCD S0 on	N	N
[mm] SIM focus pos	-0.782348	-0.7809083437167272	CCD S1 on	N	N
[mm] SIM defocus	0	0.001439871863259334	CCD S2 on	N	N
[mm] SIM translation stage pos	-233.592463	-233.5874344608287	CCD S3 on	O1	Y
[mm] SIM translation stage offset	0	-0.005018542100998502	CCD S4 on	N	N
[s] Observation start time (MET)	438773696.184000	438772405.938	CCD S5 on	N	N
Observation start date	2011-11-27T09:33:50	2011-11-27T09:13:25	Number of optional ACIS chips dropped	0	0
[s] Observation end time (MET)	438789696.184000	438790000.06393	On-chip summing requested	N	N
Observation end date	2011-11-27T14:00:30	2011-11-27T14:06:40	Subarray requested	NONE	NONE
Read mode	TIMED	TIMED	Alternating exposures requested	N	N
			[s] Primary exposure time	0.000000	3.1

## 2.3 Aspect





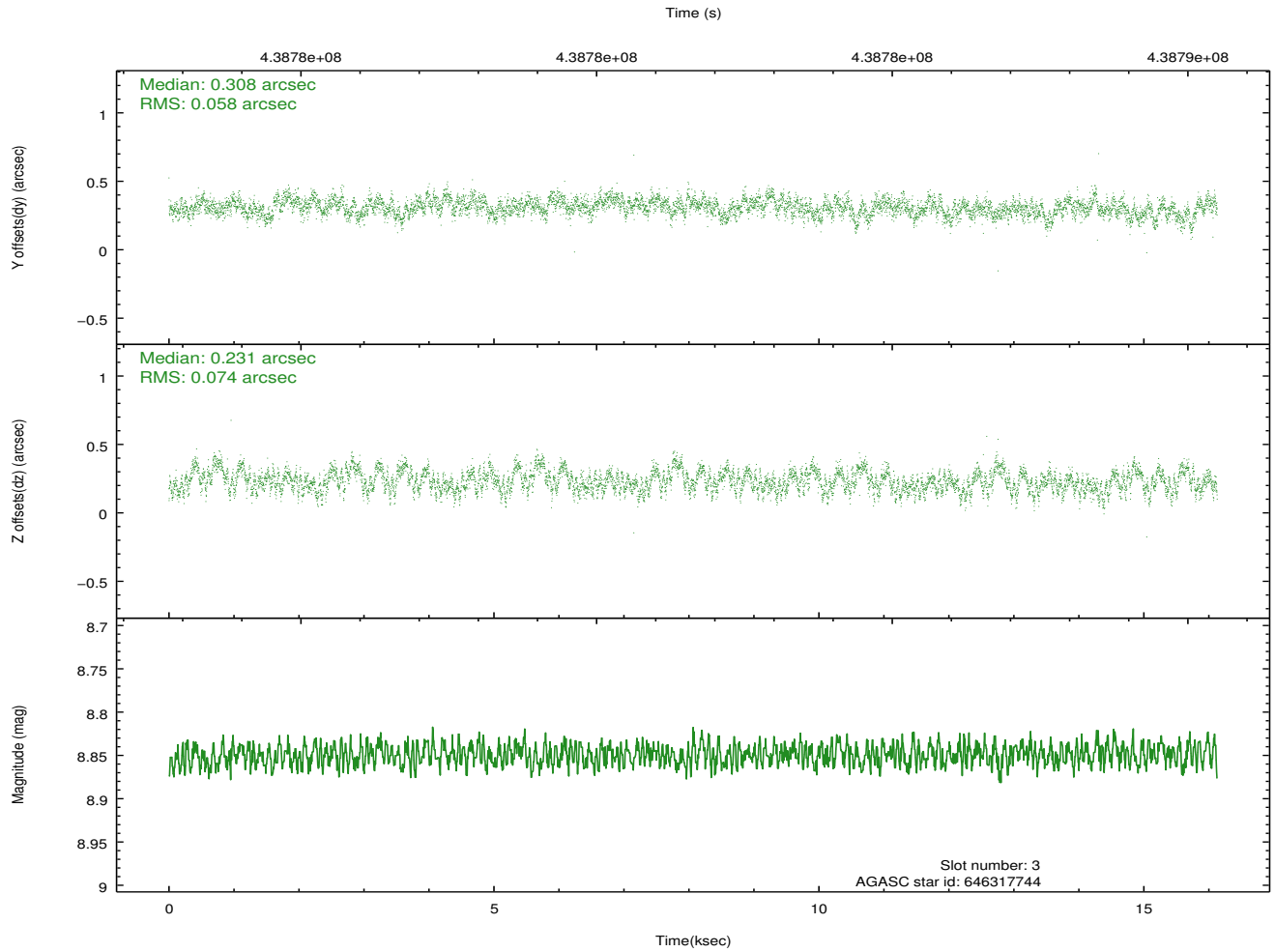
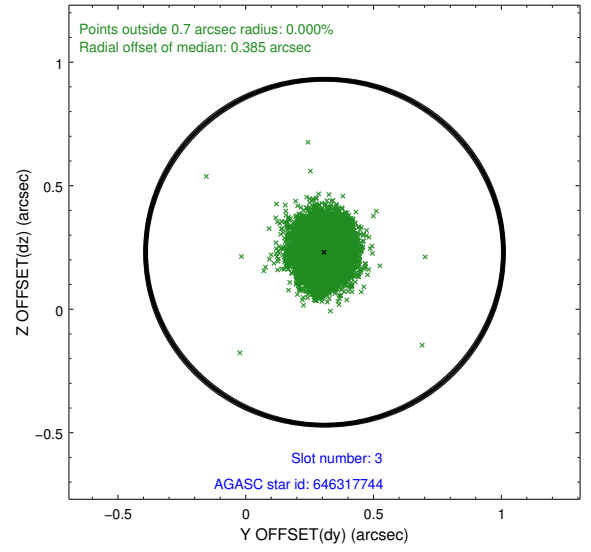
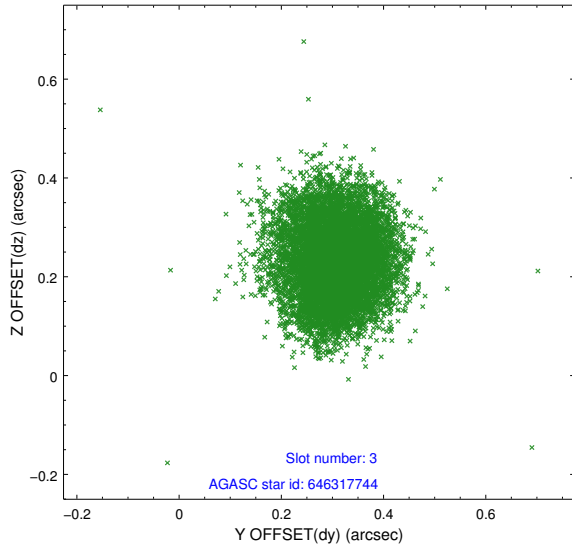
### Slot Statistics

slot	status	id	mag	n_pts	med_dy	med_dz	dr1	dr2	ra	dec	mean_y	mean_z
0	FID	ACIS-I-1	7.06	3935	0.041	0.019	0.023	0.044	0.000000	0.000000	926.18	-837.86
1	FID	ACIS-I-5	7.05	3935	-0.209	0.049	0.012	0.017	0.000000	0.000000	-1822.04	1059.51
2	FID	ACIS-I-6	7.06	3935	0.080	0.005	0.025	0.041	0.000000	0.000000	391.45	1704.30
3	GUIDE	646317744	8.85	7861	0.308	0.231	0.102	0.158	176.750120	-1.629335	-1342.04	-1375.88
4	GUIDE	646319544	7.22	7869	-0.150	-0.539	0.072	0.113	176.255766	-0.517844	1674.45	1795.48
5	GUIDE	646320472	10.42	7703	-0.265	0.220	0.206	0.329	176.968971	-0.751301	1879.68	-897.09
6	GUIDE	646321408	10.10	7862	-0.098	0.223	0.194	0.290	176.805951	-0.722522	1751.56	-315.48
7	GUIDE	646323360	7.29	7865	0.204	-0.130	0.076	0.129	176.150253	-1.384836	-1353.14	954.67

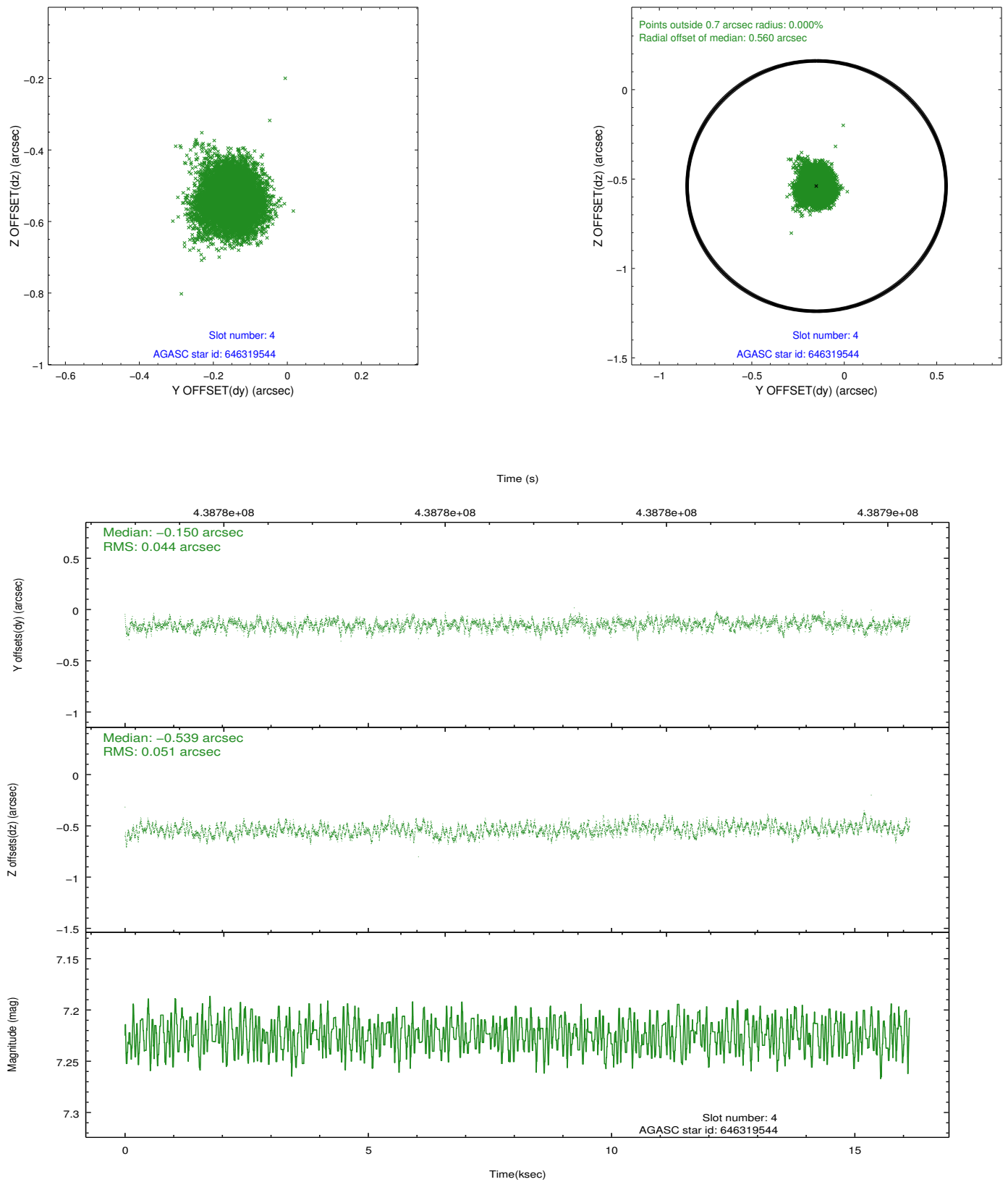
∞

## 2.4 Star Slots

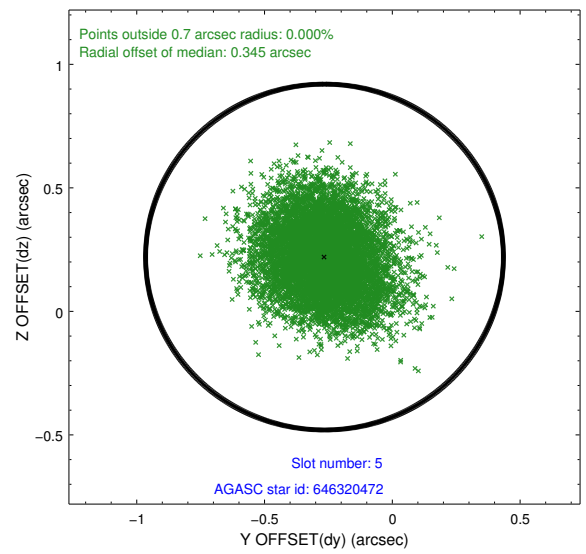
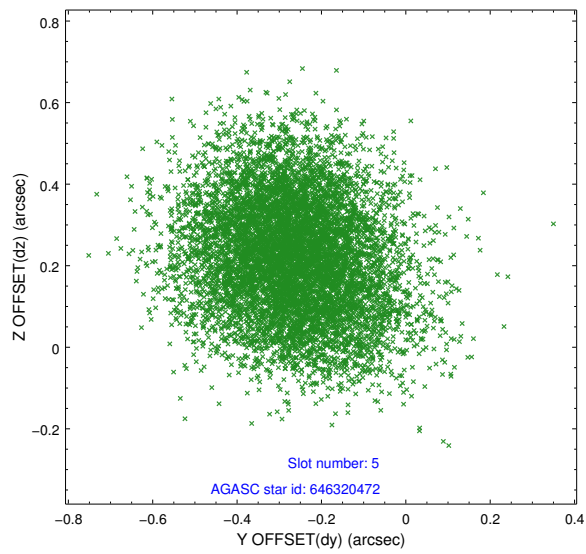
### 2.4.1 Slot 3



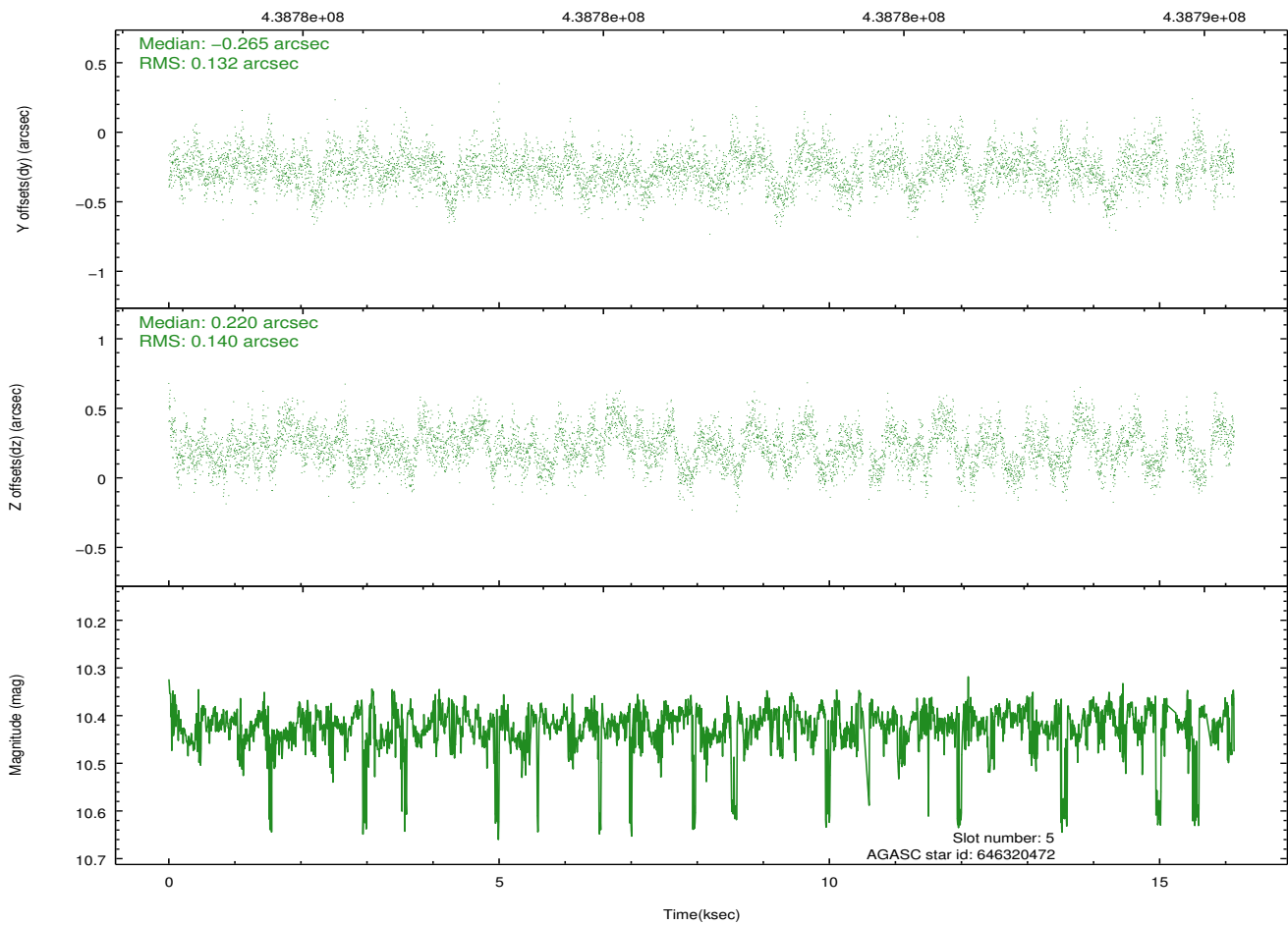
## 2.4.2 Slot 4



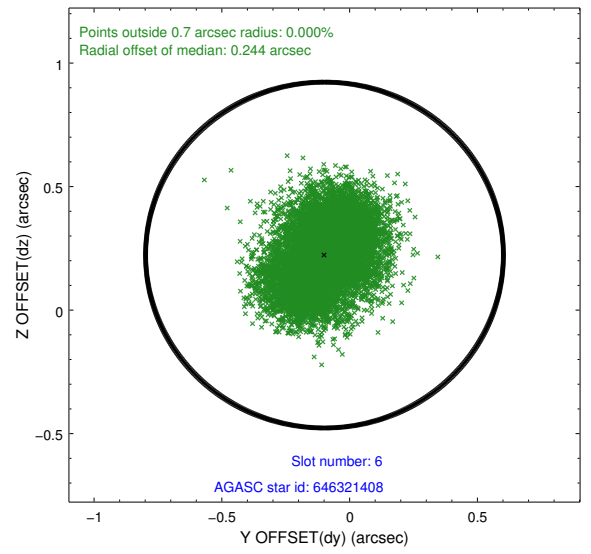
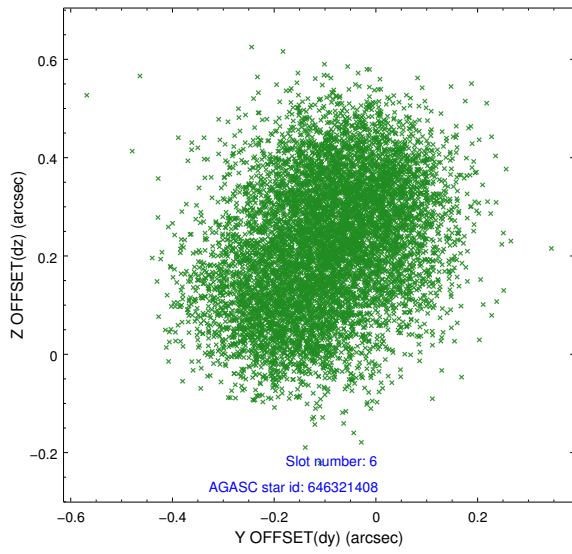
### 2.4.3 Slot 5



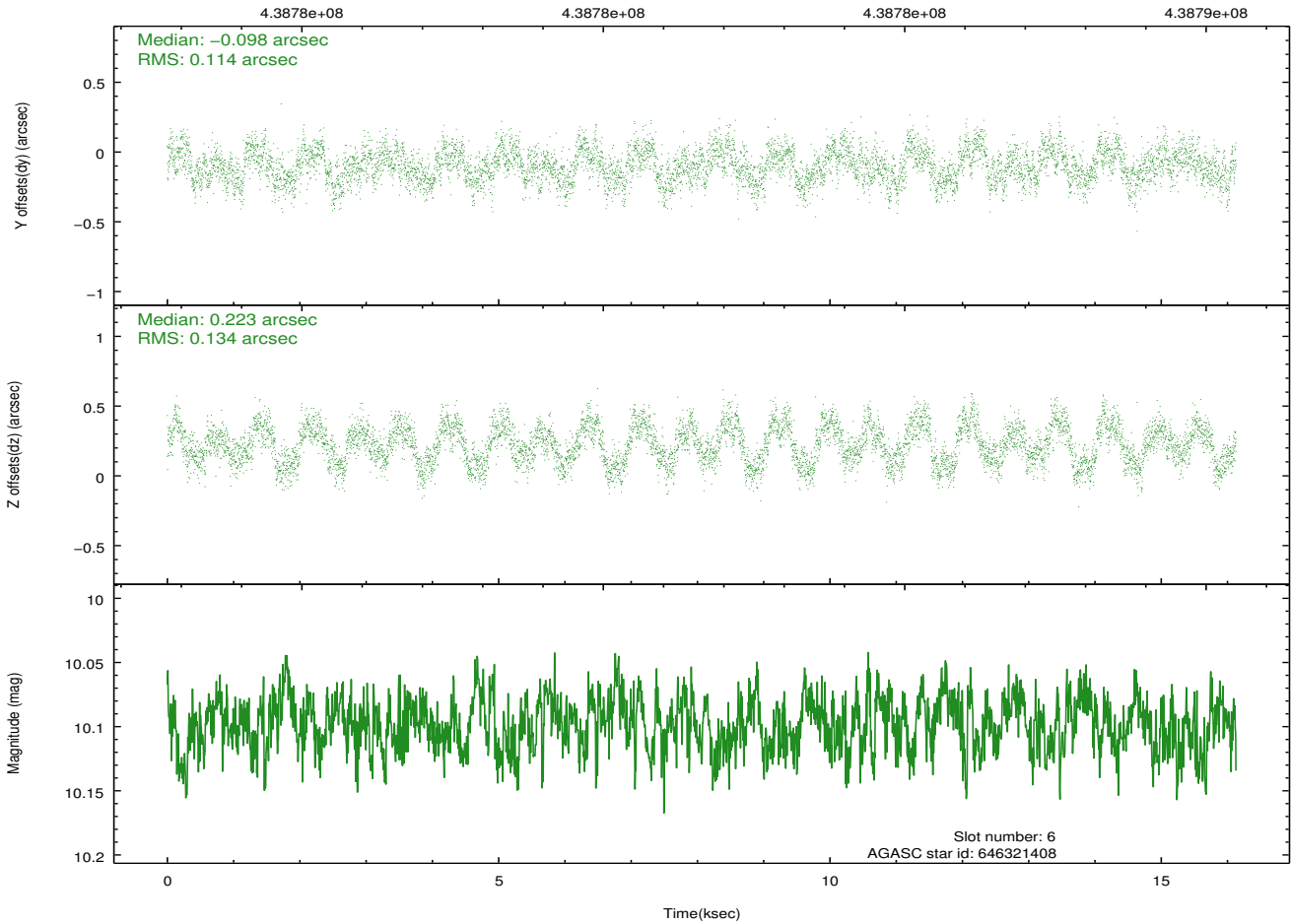
Time (s)



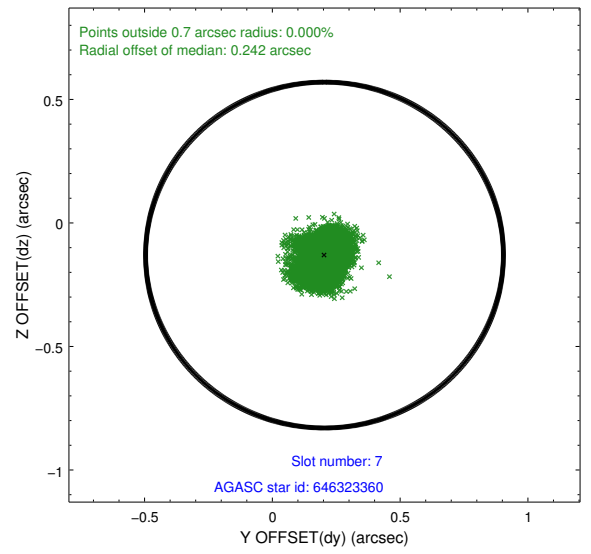
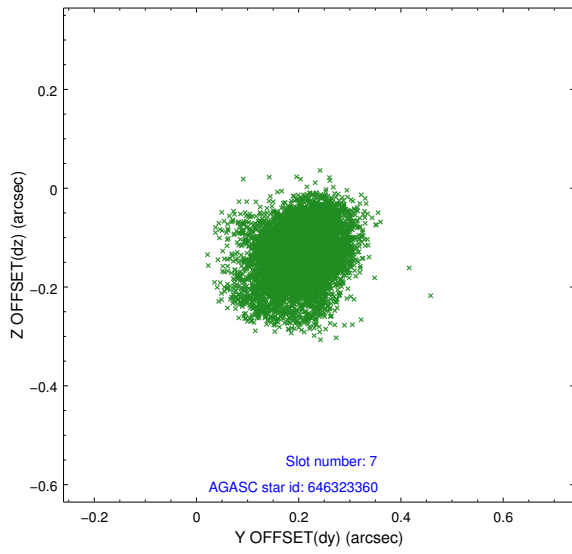
### 2.4.4 Slot 6



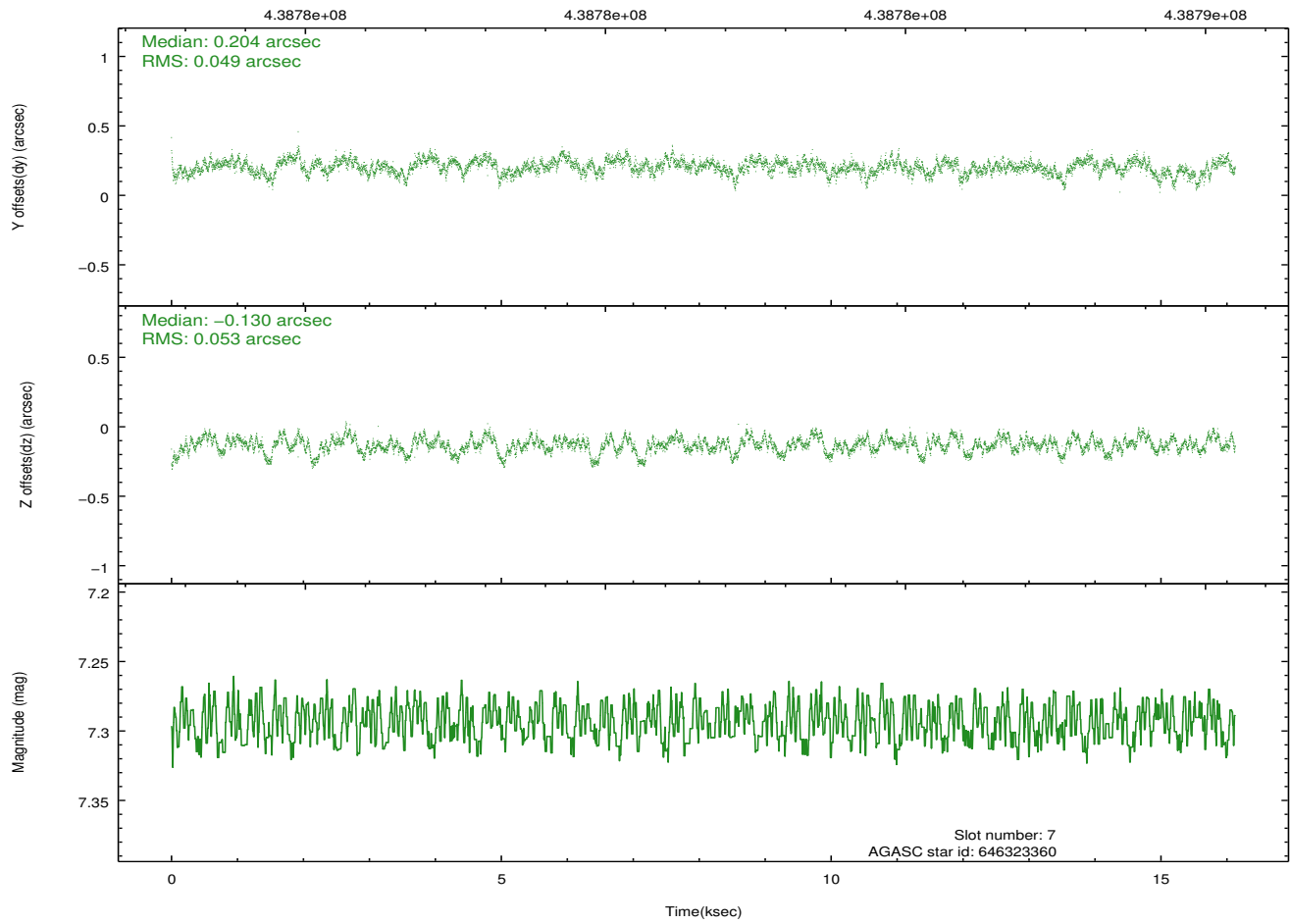
Time (s)



### 2.4.5 Slot 7

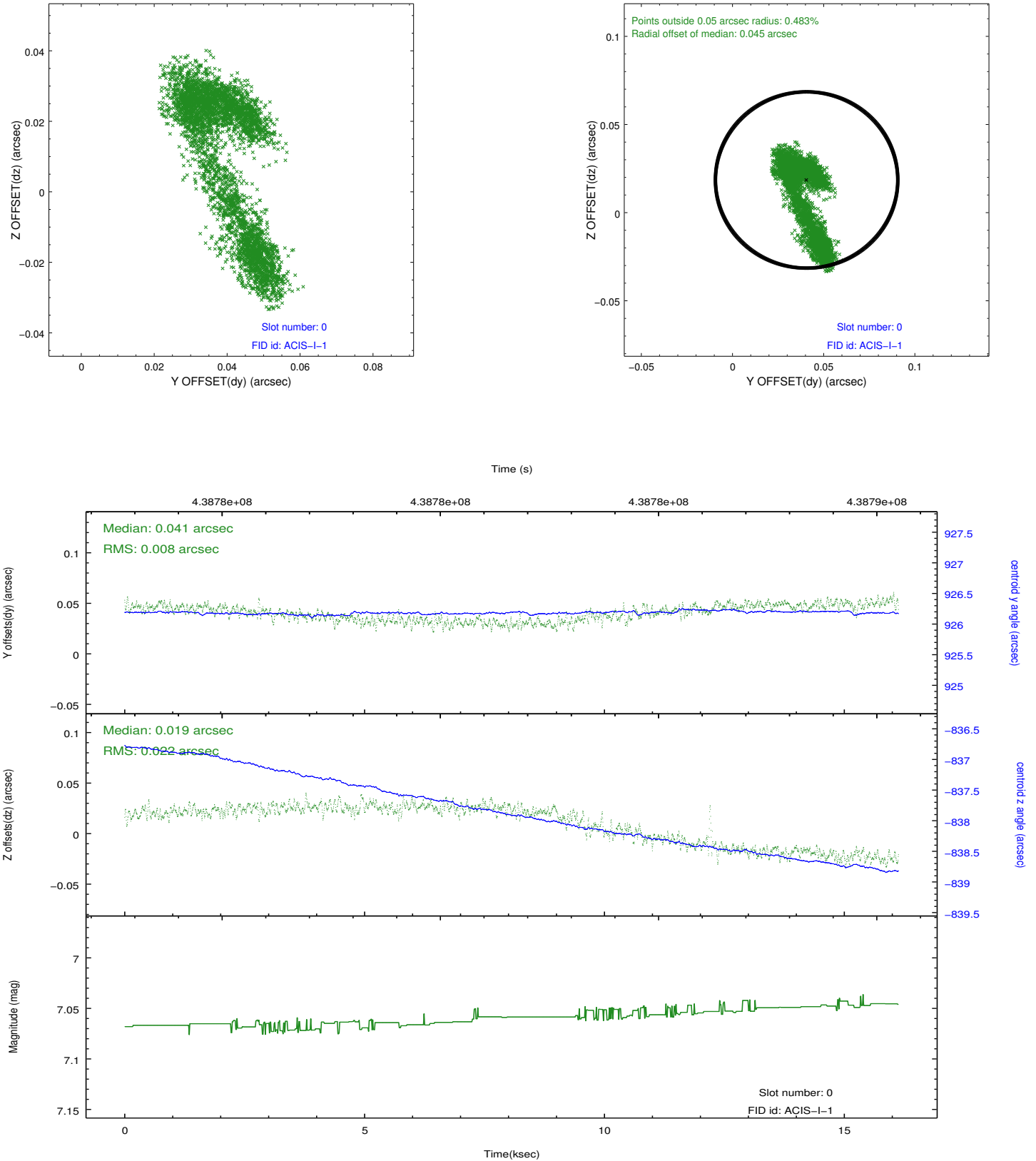


Time (s)

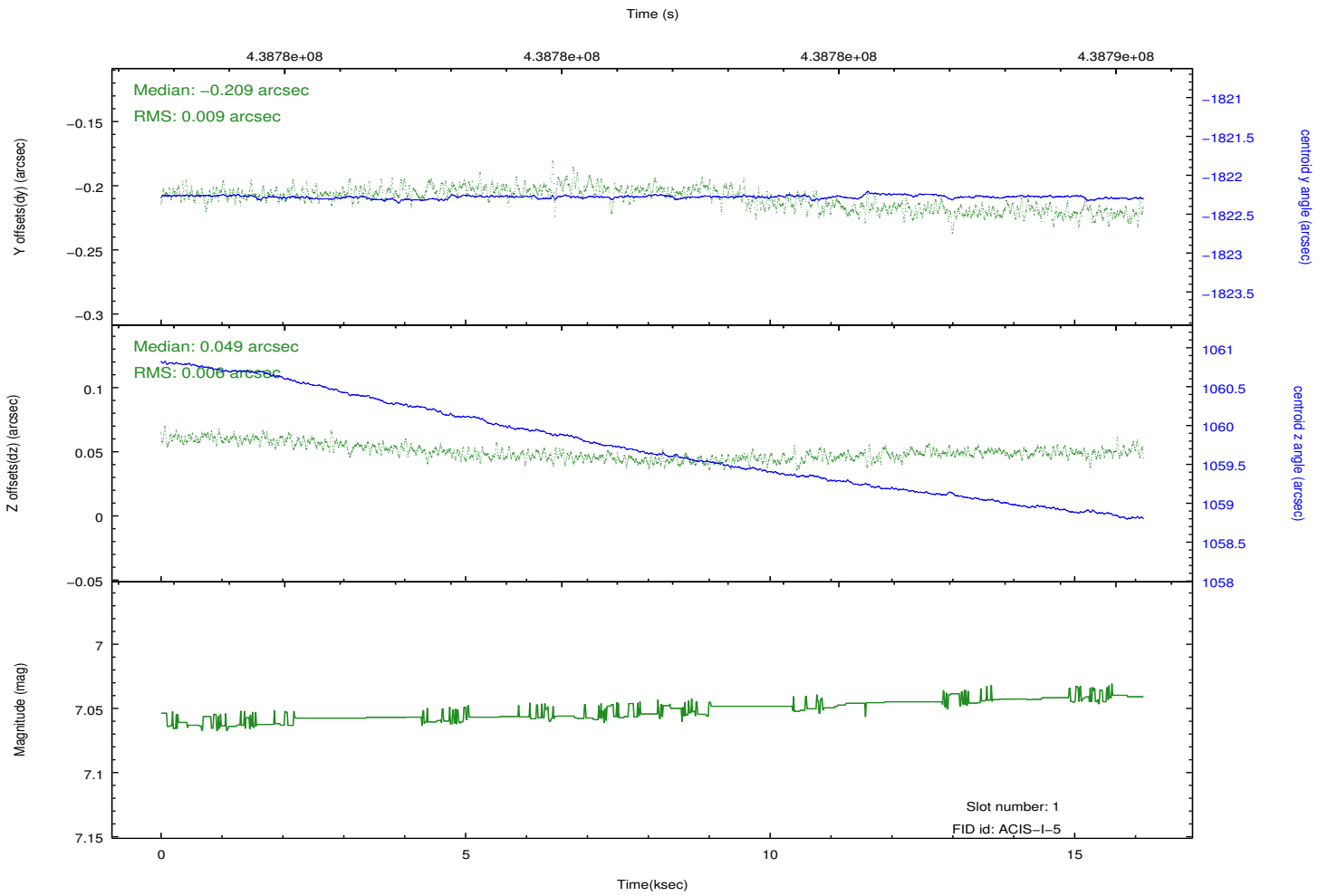
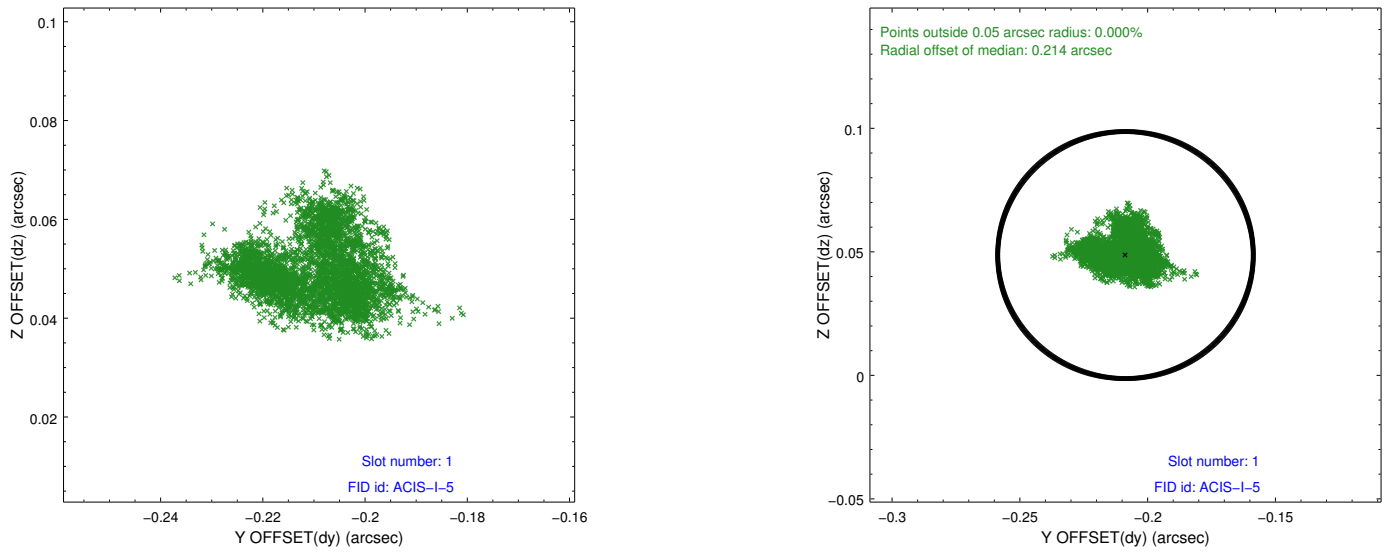


## 2.5 FID Slots

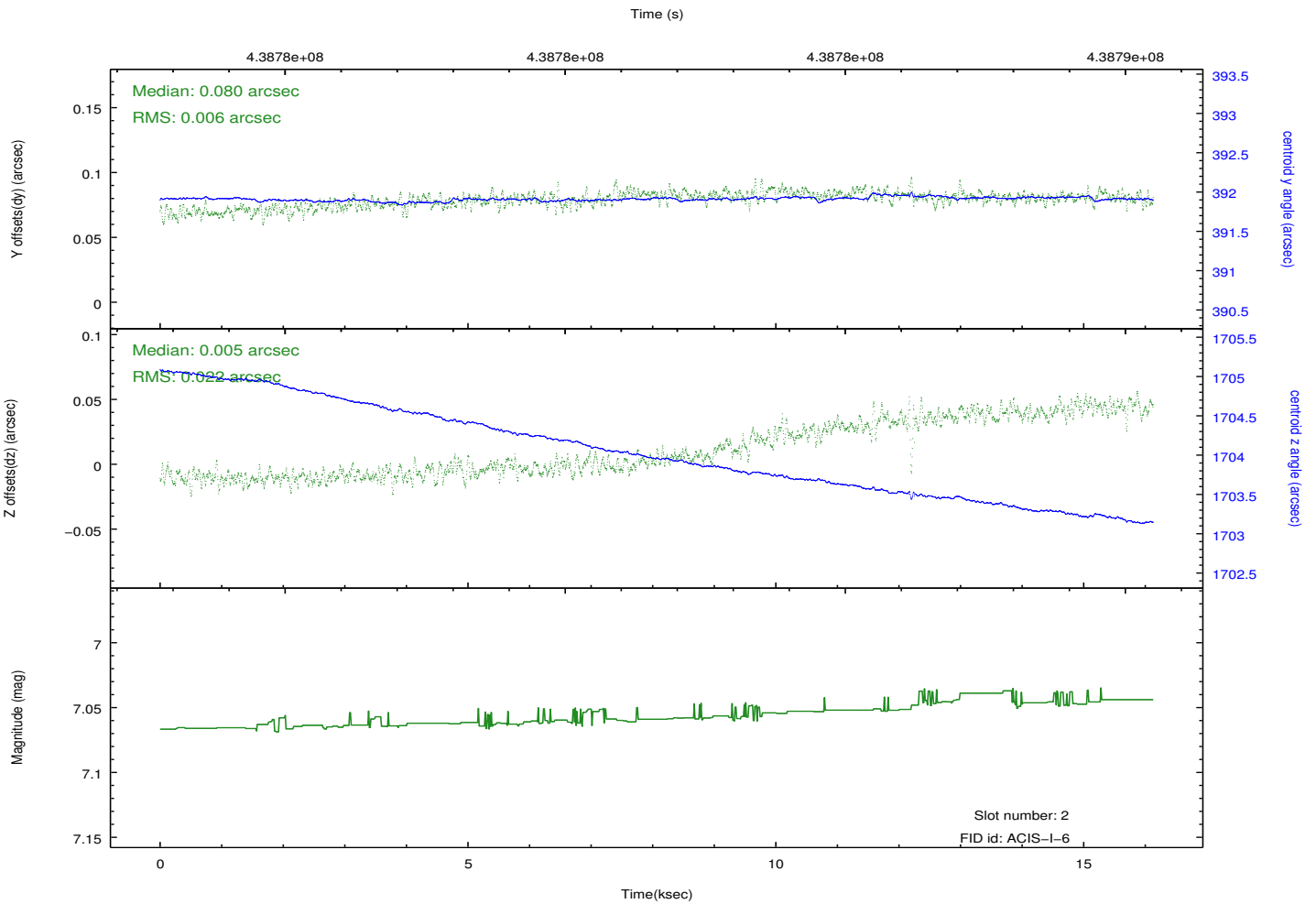
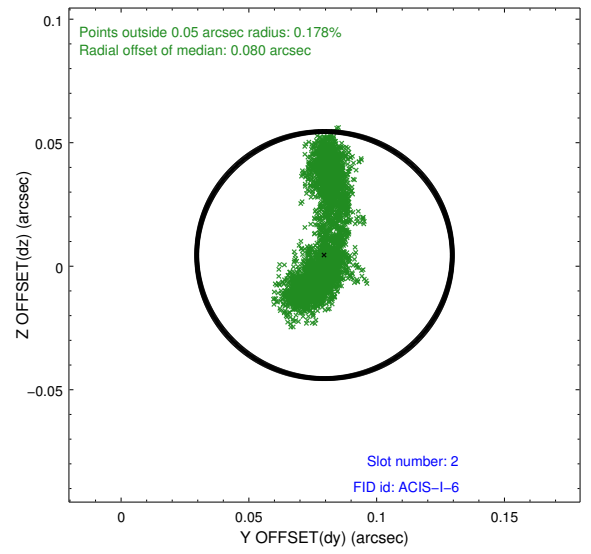
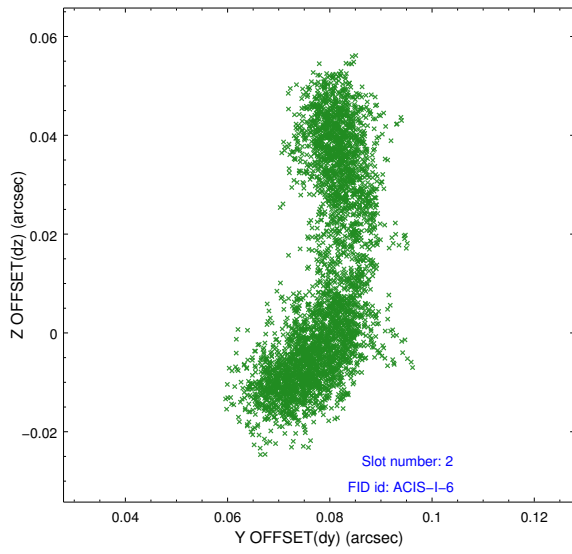
### 2.5.1 Slot 0



## 2.5.2 Slot 1



### 2.5.3 Slot 2



# A Summary

## A.1 Status

V&V Scientist	Beth Sundheim
V&V Date (YYYY-MM-DD)	2012.02.28
V&V Edition	1
V&V Disposition and Status	OK
V&V Charge Time	16.032069135129

## A.2 Comments