

V&V Reference Report

L2 ASCDS Version : 8.3.3.1

Observation 1482 - L2 Version 6
Chandra X-Ray Center

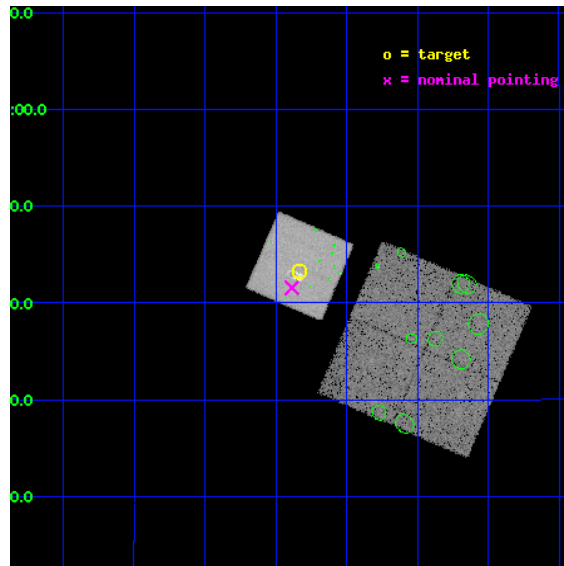
L2 Processing Date : Dec 7 2010

Contents

1	Front	2
2	OBI	3
2.1	OBI	3
2.1.1	Images	3
2.1.2	Bias	3
2.1.3	Parameters	4
2.1.4	Events	4
2.2	Compared Parameters	5
2.3	Aspect	6
2.4	Star Slots	9
2.4.1	Slot 3	9
2.4.2	Slot 4	10
2.4.3	Slot 5	11
2.4.4	Slot 6	12
2.4.5	Slot 7	13
2.5	FID Slots	14
2.5.1	Slot 0	14
2.5.2	Slot 1	15
2.5.3	Slot 2	16
3	Point Sources	17
A	Summary	18
A.1	Status	18
A.2	Comments	18

1 Front

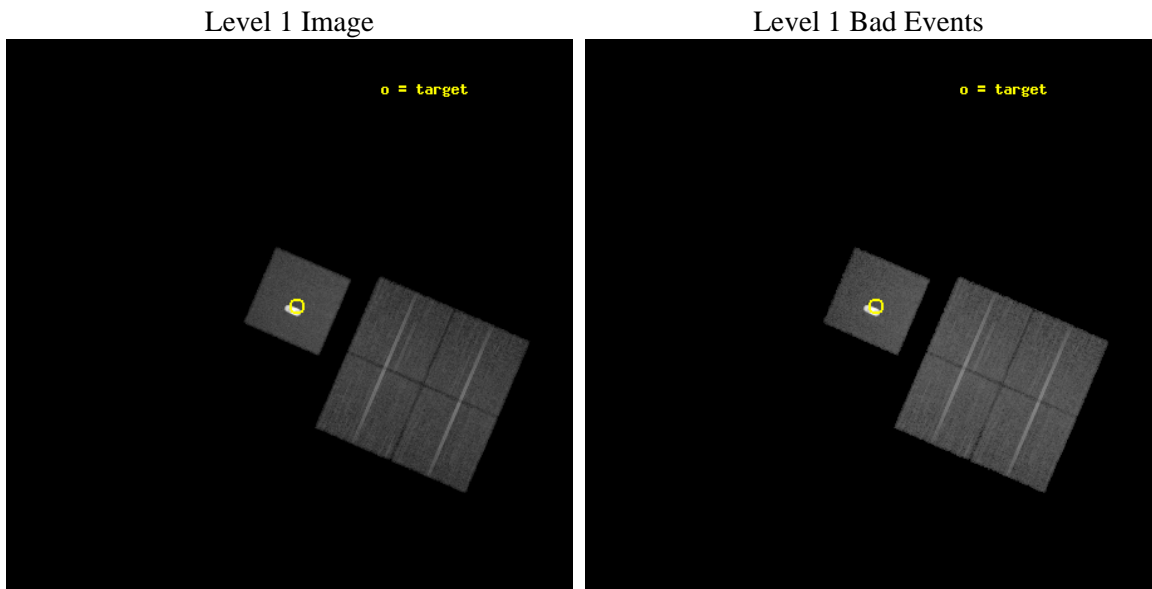
seq_num	100000	Sequence number
obs_id	1482	Observation id
title	ACIS OBSERVATION OF JUPITER AND THE GALILEAN SATELLITES	Proposal t
observer	Prof. Gordon Garmire	Principal investigator
object	JUPITER	Source name
dtcycle	0	
cycle	P	events from which exps? Prim/Second/Both
ra_targ	24.70746	Observer's specified target RA
dec_targ	8.72046	Observer's specified target Dec
ra_nom	24.721696049714	Nominal RA
dec_nom	8.6926104532803	Nominal Dec
roll_nom	293.346416338	Nominal Roll
revision	6	Processing version of data
ontime	18870.381476097	Sum of GTIs [s]
livetime	18631.433343467	Livetime [s]
ontime0	18867.099465877	Sum of GTIs [s]
ontime1	18870.299396098	Sum of GTIs [s]
ontime2	18870.258336179	Sum of GTIs [s]
ontime3	18863.73539567	Sum of GTIs [s]
ontime7	18870.381476097	Sum of GTIs [s]
l2events	127672	Number of level 2 events



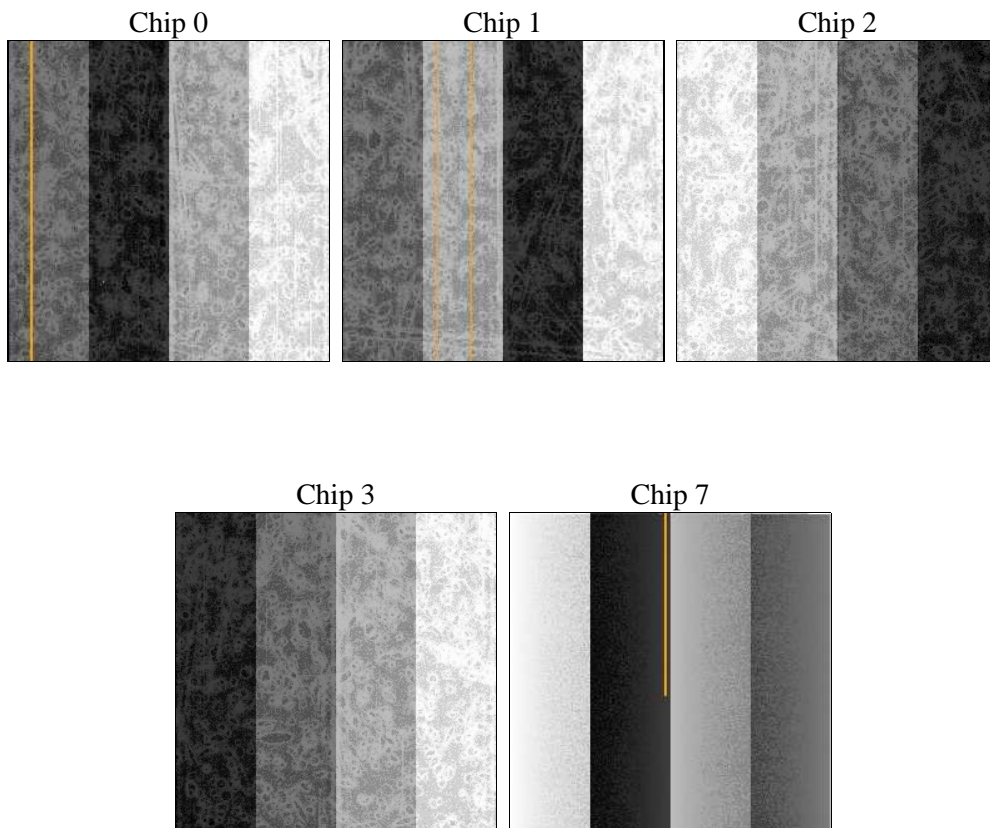
2 OBI

2.1 OBI

2.1.1 Images



2.1.2 Bias



2.1.3 Parameters

obi_num	0	Obi number	sched_exp_time	19100.000000	Scheduled observation exposure time
ascdsver	8.3.3.1	ASCDS version number	ontime	18870.381476097	Sum of GTIs [s]
caldbver	4.4.0	 	ontime0	18867.099465877	Sum of GTIs [s]
date	2010-12-08T00:46:58	Date and time of file creation	ontime1	18870.299396098	Sum of GTIs [s]
revision	4	Processing version of data	ontime2	18870.258336179	Sum of GTIs [s]
			ontime3	18863.73539567	Sum of GTIs [s]
			ontime7	18870.381476097	Sum of GTIs [s]
			l1events	1640474	Number of level 1 events

2.1.4 Events

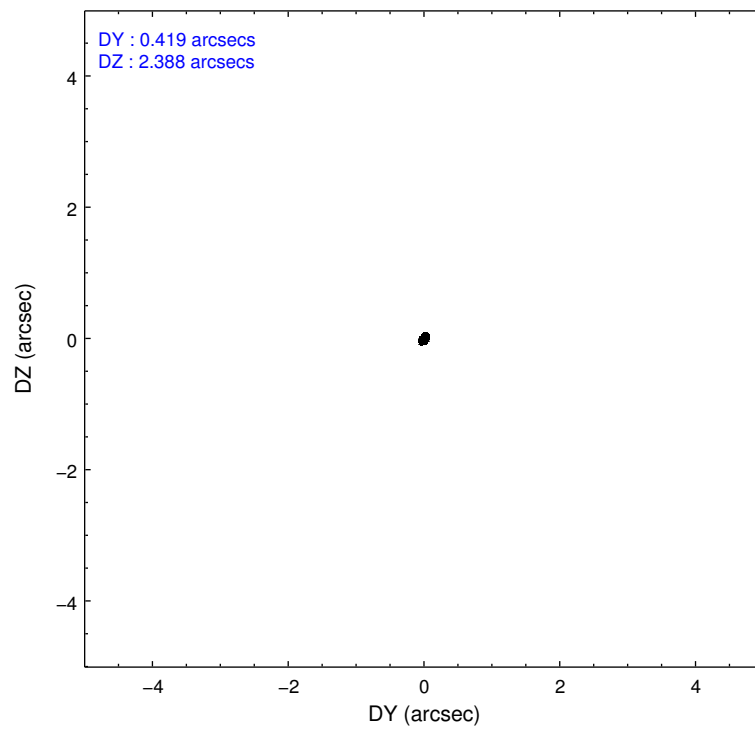
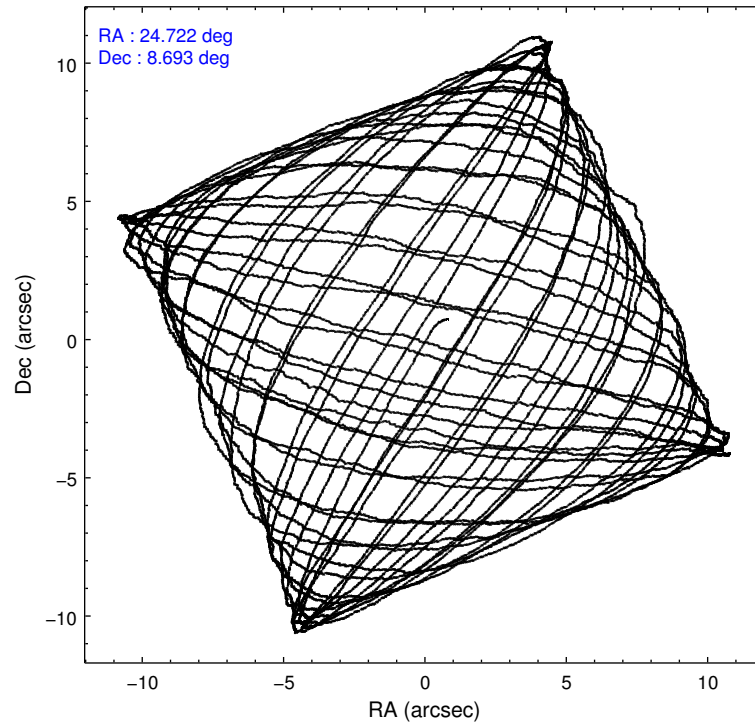
	ccd 0	ccd 1	ccd 2	ccd 3	ccd 7
level 1 events	153495	150272	162219	159499	1014989
rejected events	137516	133981	147637	144481	939439
rejected %	89%	89%	91%	90%	92%

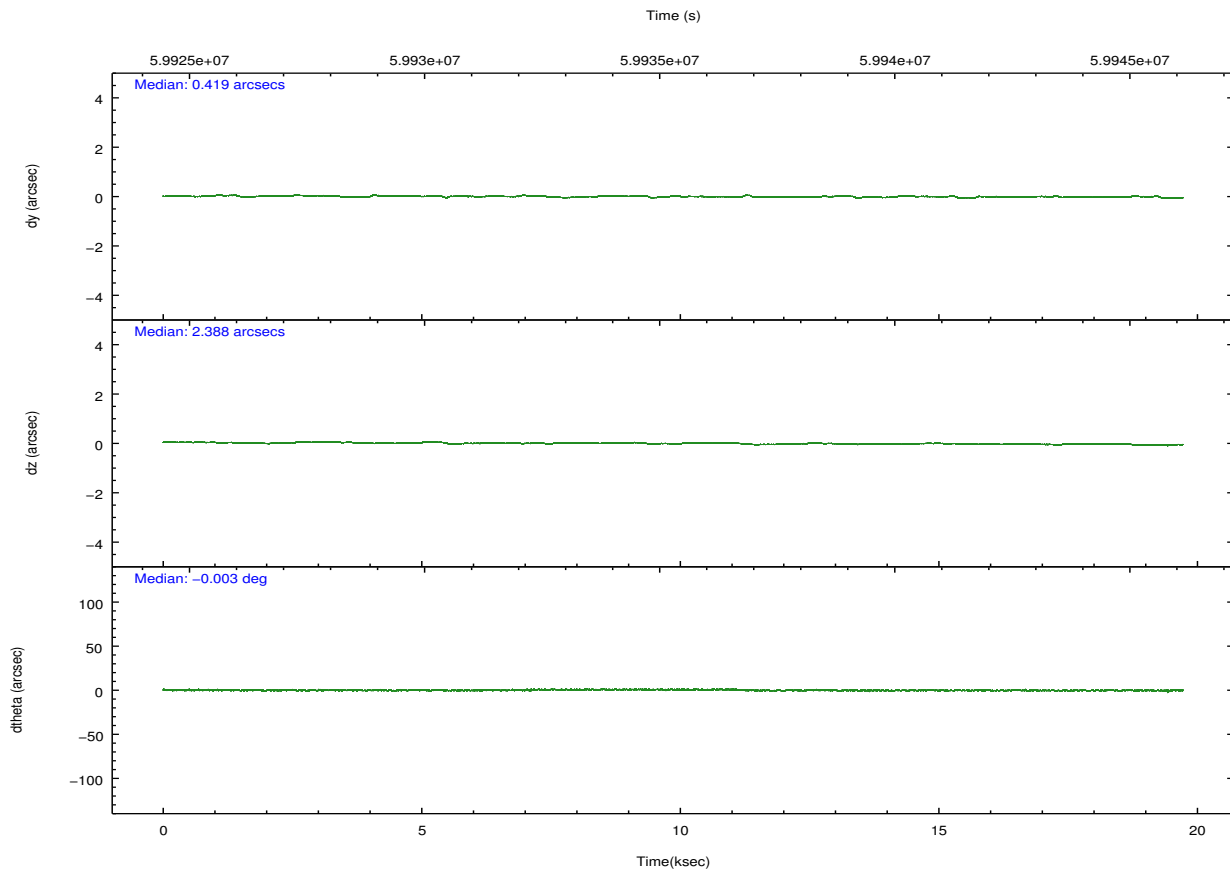
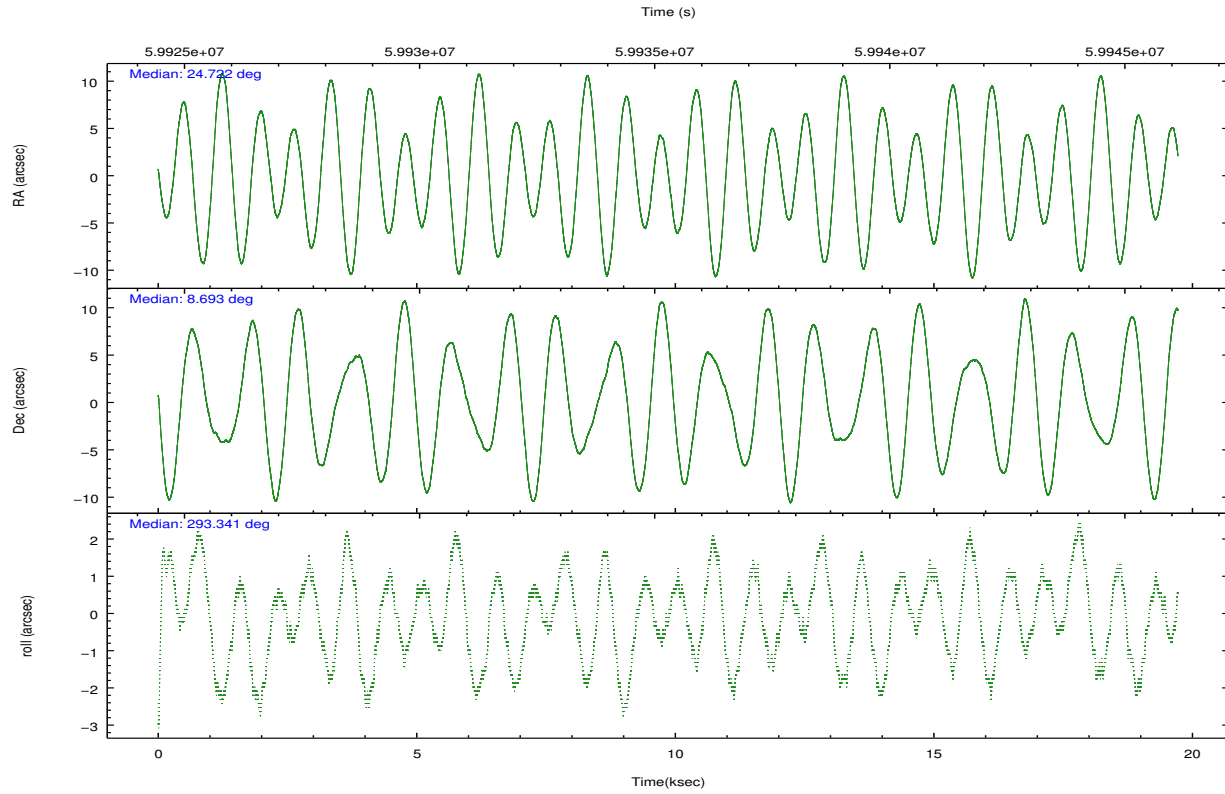
	ccd 0	ccd 1	ccd 2	ccd 3	ccd 7
grade 0 events	3807	3513	3105	3130	5502
	2%	2%	1%	1%	0%
grade 1 events	42	33	29	26	3234
	0%	0%	0%	0%	0%
grade 2 events	6075	6025	5720	6072	15963
	3%	4%	3%	3%	1%
grade 3 events	1222	1347	1004	1066	4907
	0%	0%	0%	0%	0%
grade 4 events	1109	1278	1004	948	4299
	0%	0%	0%	0%	0%
grade 5 events	3095	3335	2748	2975	17328
	2%	2%	1%	1%	1%
grade 6 events	3772	4132	3753	3807	44918
	2%	2%	2%	2%	4%
grade 7 events	134373	130609	144856	141475	918838
	87%	86%	89%	88%	90%

2.2 Compared Parameters

Parameter	Planned	Actual	Parameter	Planned	Actual
Instrument	ACIS	ACIS	Obspar format version number	6	6
Detector	ACIS-01237	ACIS-01237	Obspar file type	PREDICTED	ACTUAL
Grating	NONE	NONE	Obspar update status	NONE	UPDATED
Data mode	FAINT	FAINT	Number of optional ACIS chips dropped	0	0
Observation mode	POINTING	POINTING	On-chip summing requested	N	N
Pointing RA	24.699371	24.72169604971421	Subarray requested	NONE	NONE
Pointing Dec	8.709168	8.692610453280331	Alternating exposures requested	N	N
Pointing Roll	293.193169	293.3464163379997	Primary exposure time	0.000000	3.2
Window start time	59904844.184000	59904844.184000			
Window stop time	59925004.184000	59925004.184000			
SIM focus pos (mm)	-0.684267	-0.6828225247311905			
SIM defocus (mm)	0	0.001444936568705701			
SIM translation stage pos (mm)	-190.132523	-190.1400660498719			
SIM translation stage offset (mm)	0	0.00754346686406393			
Observation start time	59925904.184000	59925238.058983			
Observation start date	1999-11-25T14:04:00	1999-11-25T13:53:58			
Observation end time	59945004.184000	59945277.834707			
Observation end date	1999-11-25T19:22:20	1999-11-25T19:27:57			
Read mode	TIMED	TIMED			

2.3 Aspect



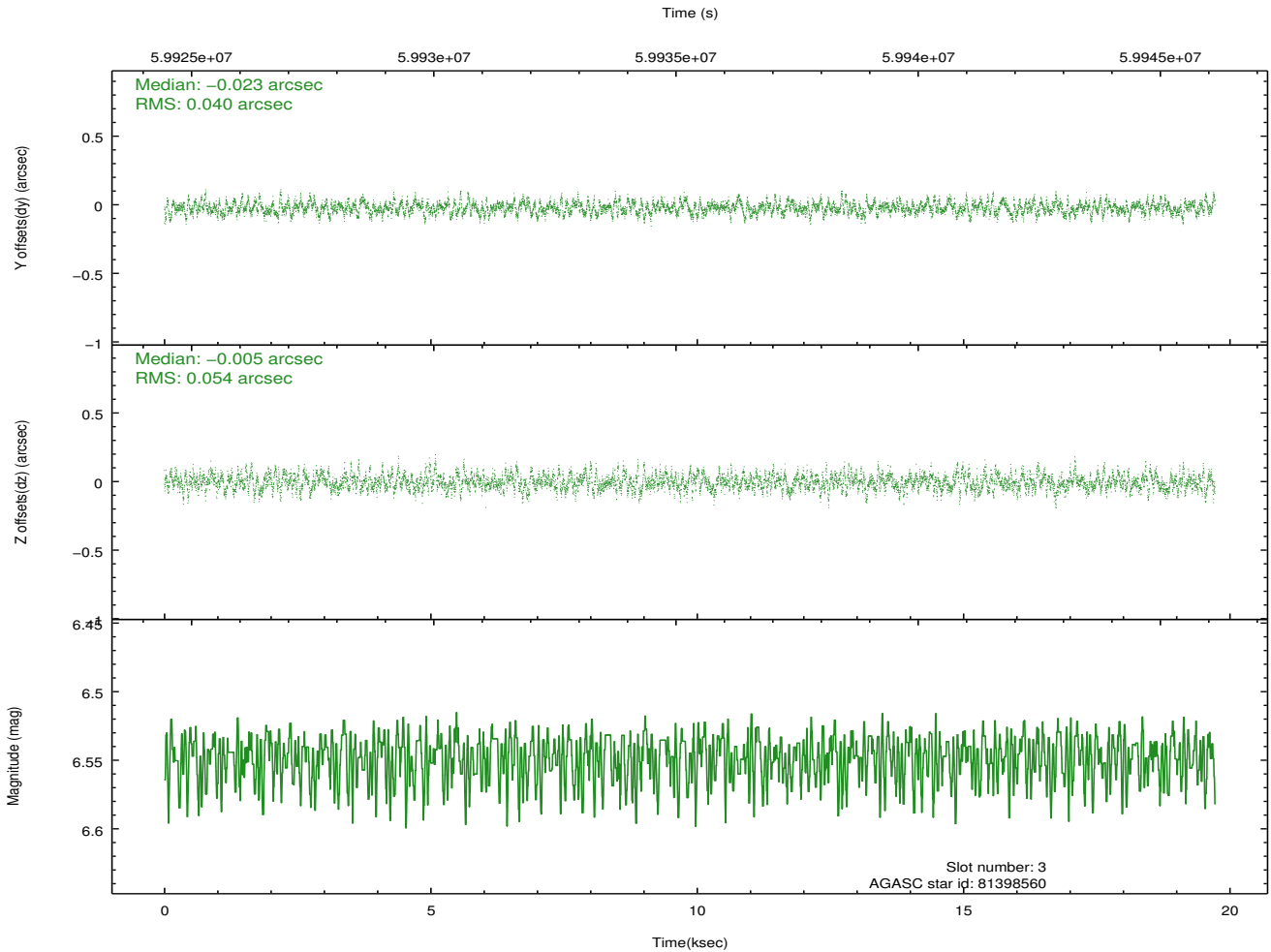
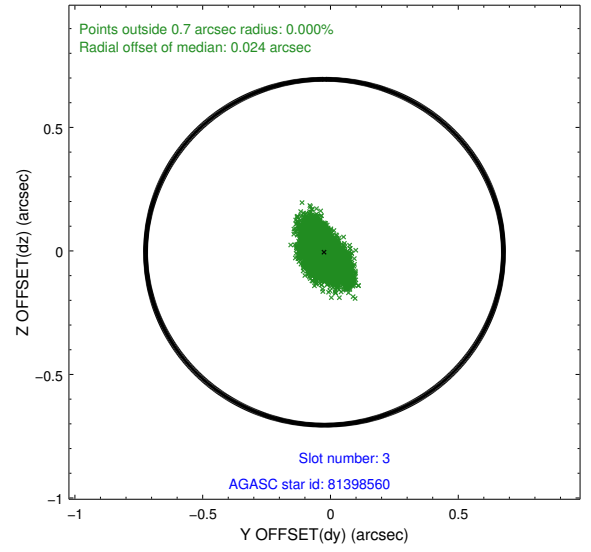
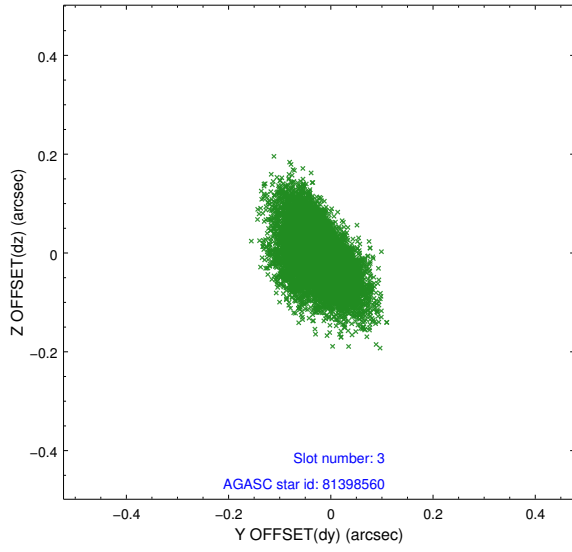


Slot Statistics

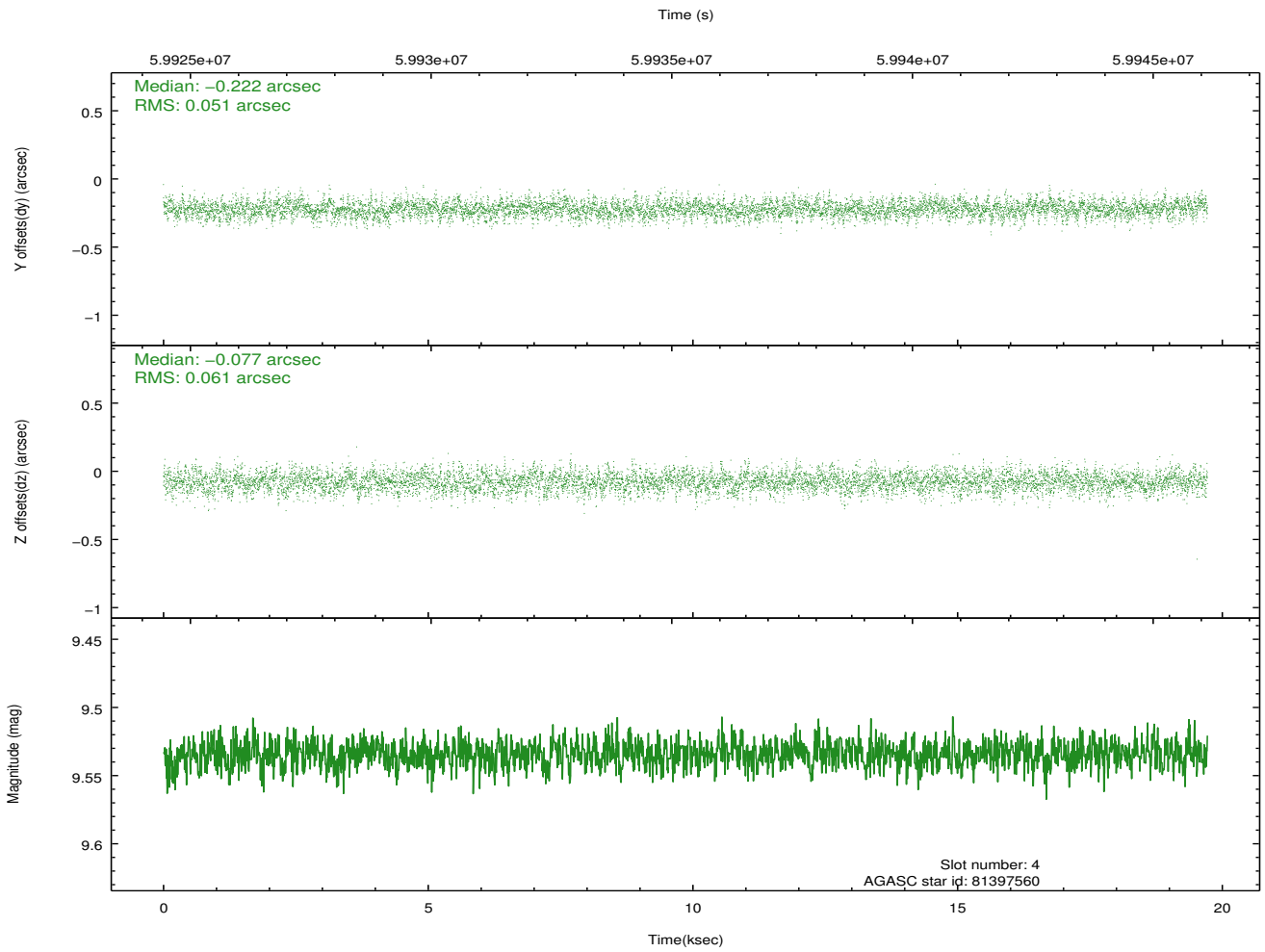
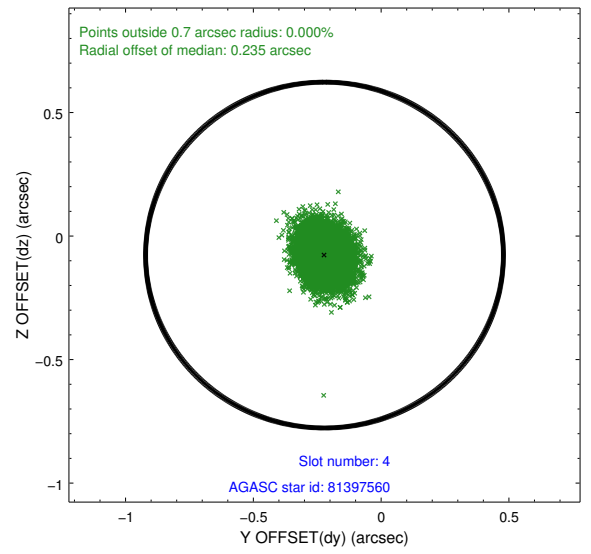
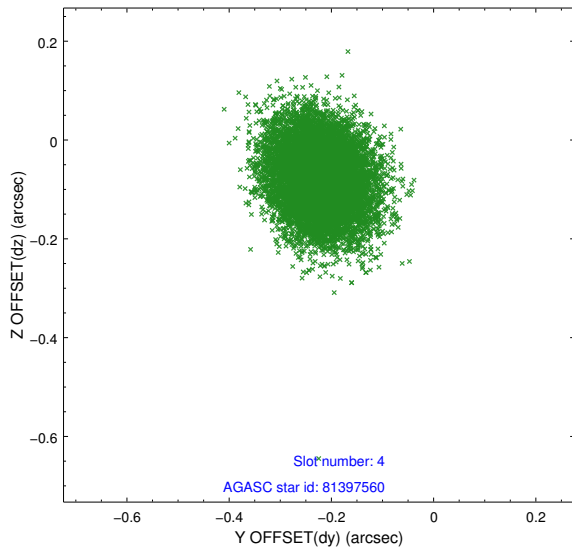
slot	status	id	mag	n_pts	med_dy	med_dz	dr1	dr2	ra	dec	mean_y	mean_z
0	FID	ACIS-S-2	7.12	9621	-0.011	-0.016	0.007	0.012	0.000000	0.000000	-753.05	-1723.42
1	FID	ACIS-S-4	7.22	9619	0.057	0.010	0.006	0.010	0.000000	0.000000	2160.34	185.00
2	FID	ACIS-S-5	7.24	9620	-0.076	0.015	0.007	0.011	0.000000	0.000000	-1805.88	178.79
3	GUIDE	81398560	6.55	9620	-0.023	-0.005	0.070	0.122	25.145528	8.760778	452.94	1532.23
4	GUIDE	81397560	9.53	9612	-0.222	-0.077	0.084	0.137	24.004098	8.965422	-1824.26	-1909.00
5	GUIDE	81398056	9.18	9615	0.042	0.131	0.092	0.148	25.259975	8.764958	598.82	1912.60
6	GUIDE	81401848	9.56	9612	-0.026	-0.070	0.084	0.143	24.221068	8.860999	-1173.75	-1348.64
7	GUIDE	81403240	9.60	9610	0.227	0.022	0.107	0.168	24.738374	8.119294	2006.41	-708.98

2.4 Star Slots

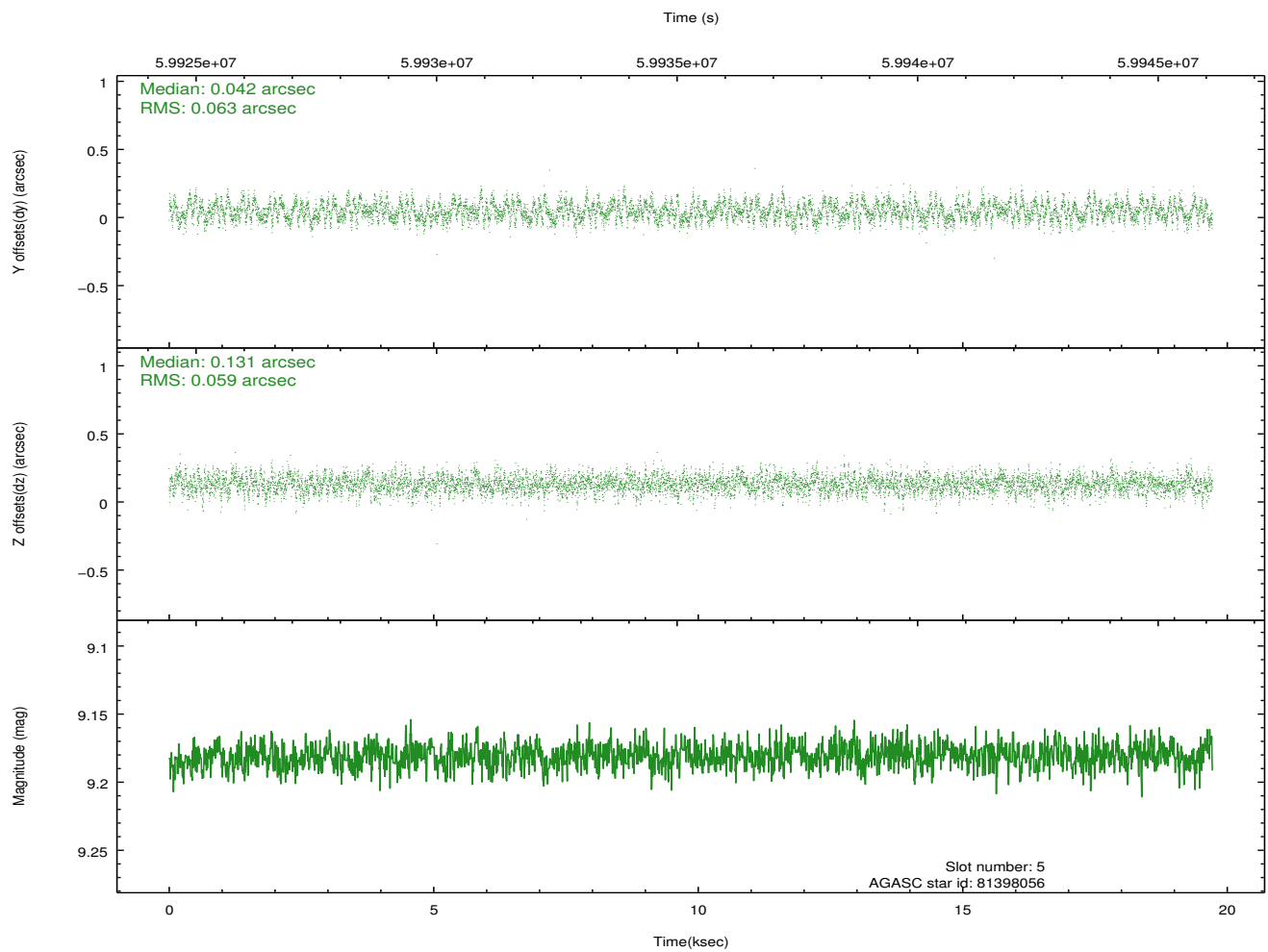
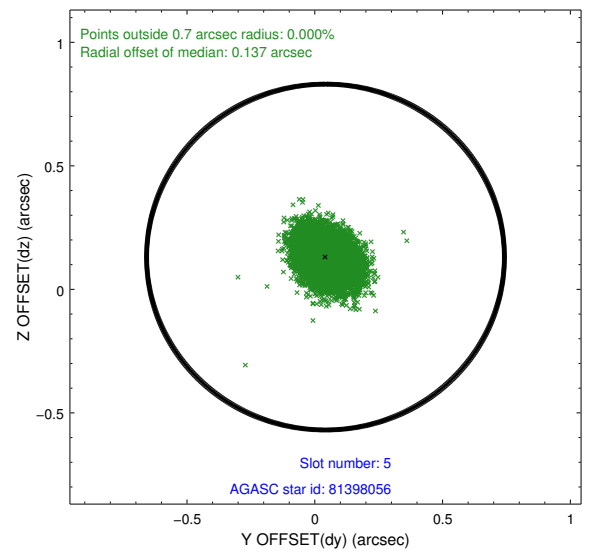
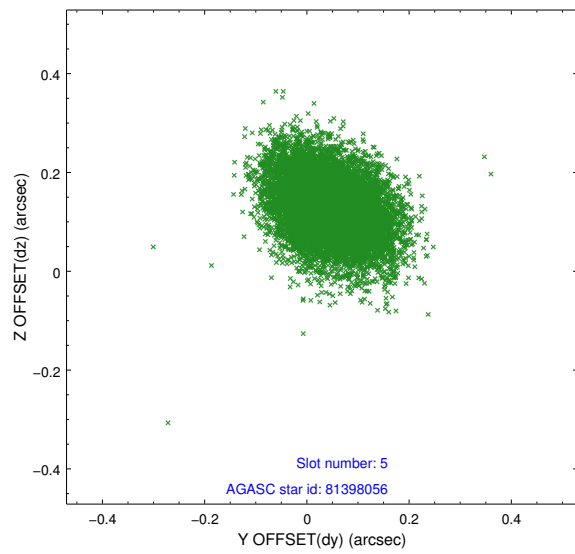
2.4.1 Slot 3



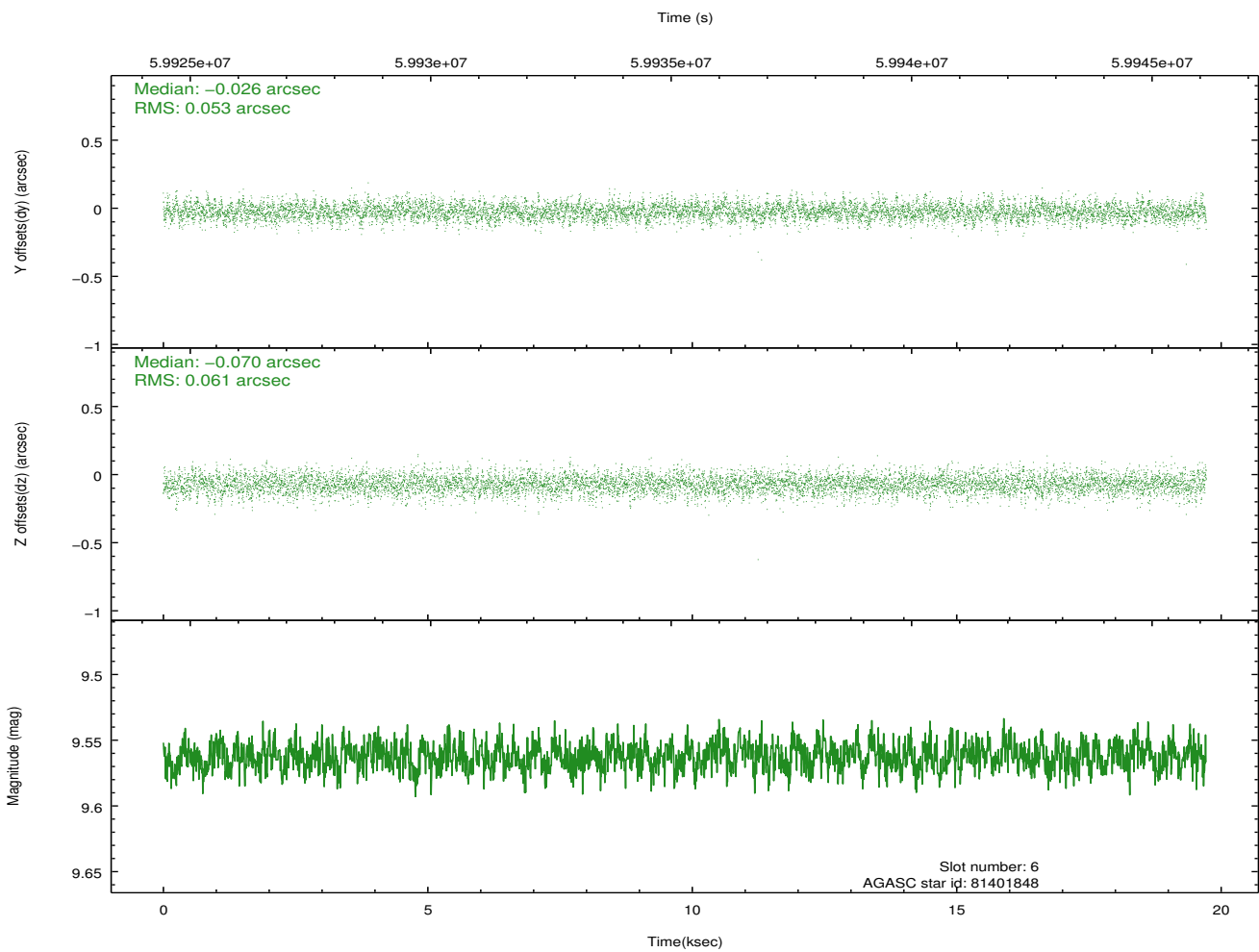
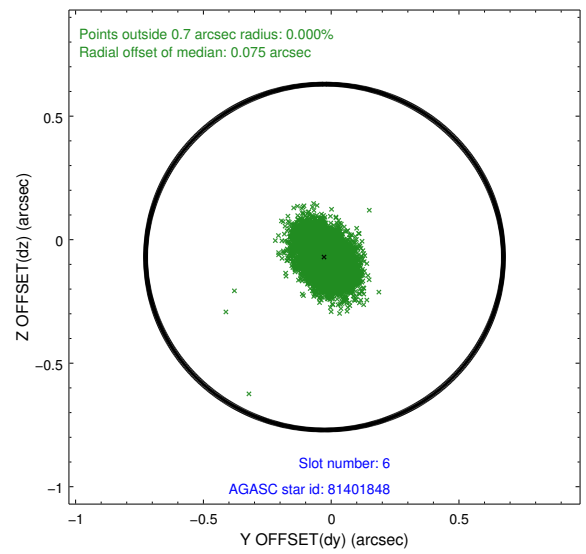
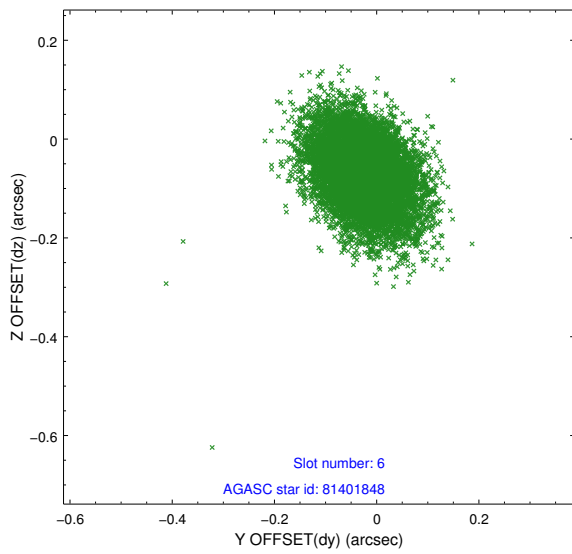
2.4.2 Slot 4



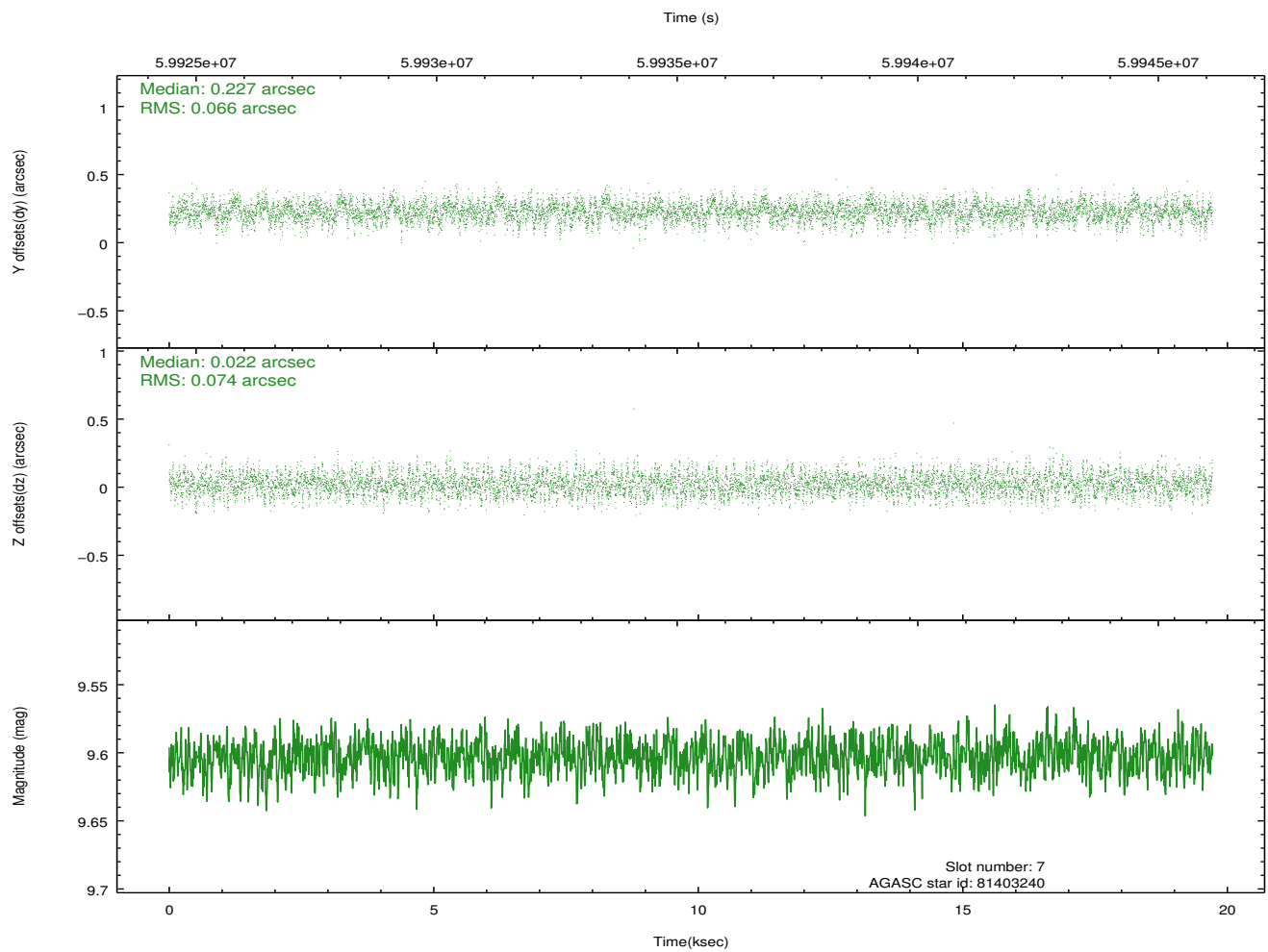
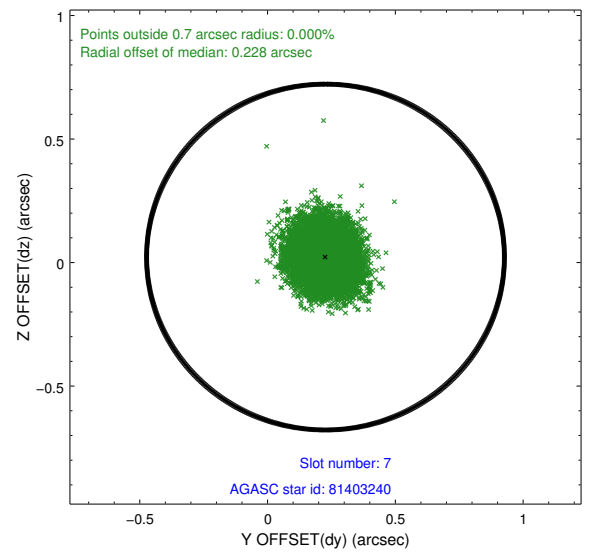
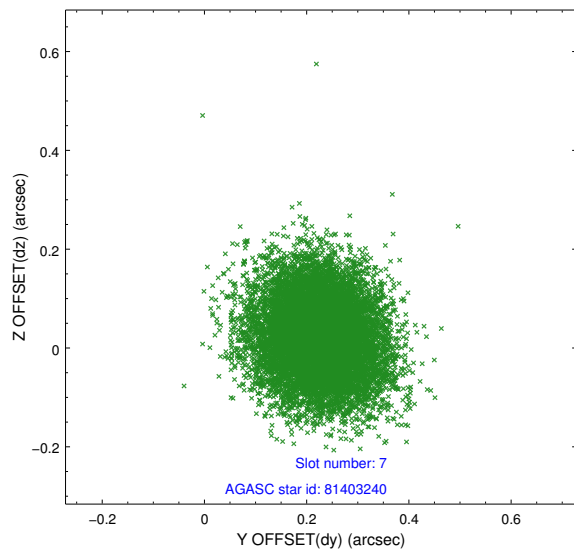
2.4.3 Slot 5



2.4.4 Slot 6

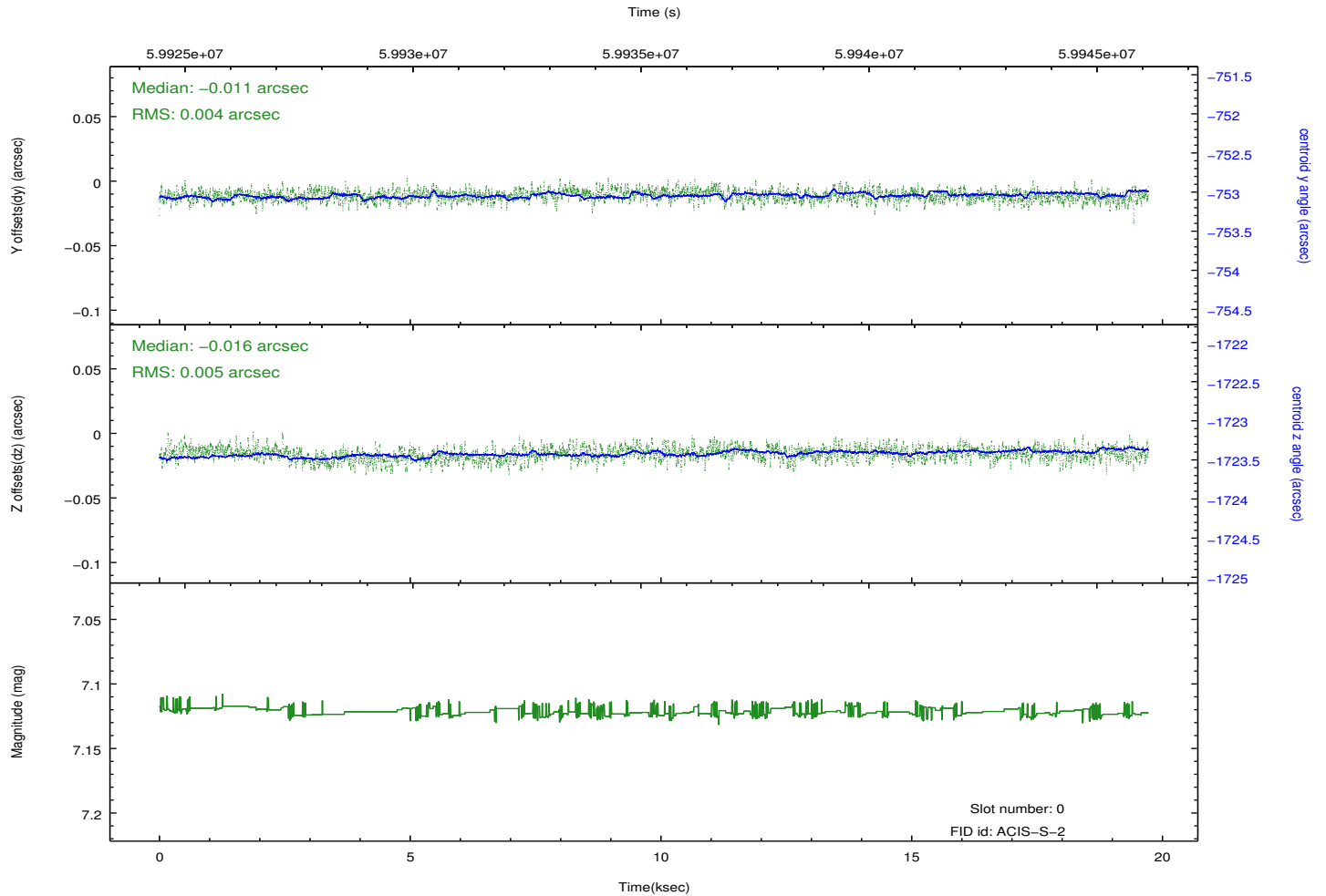
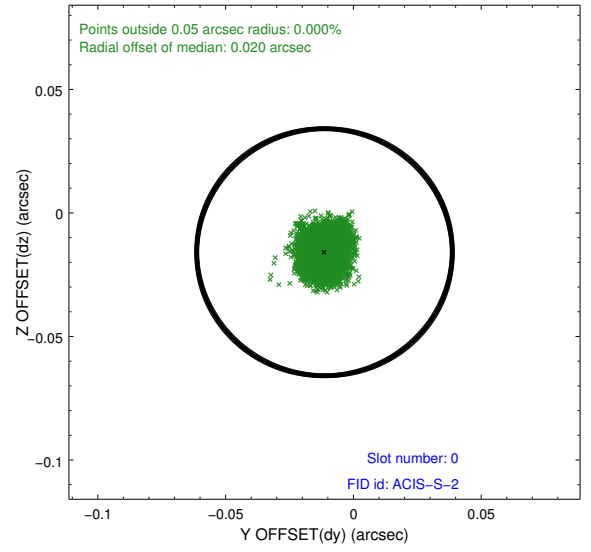
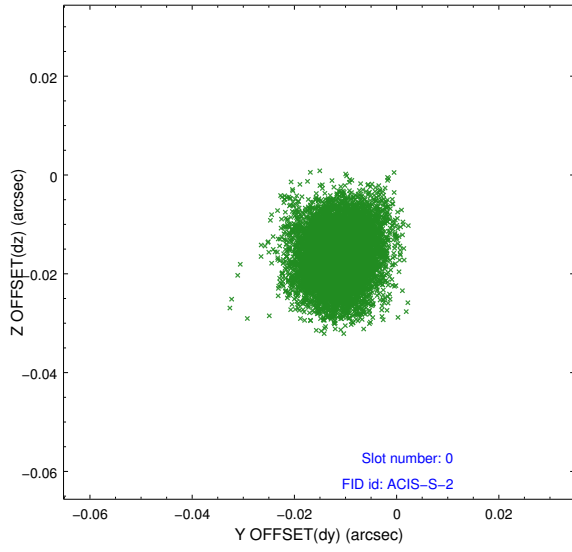


2.4.5 Slot 7

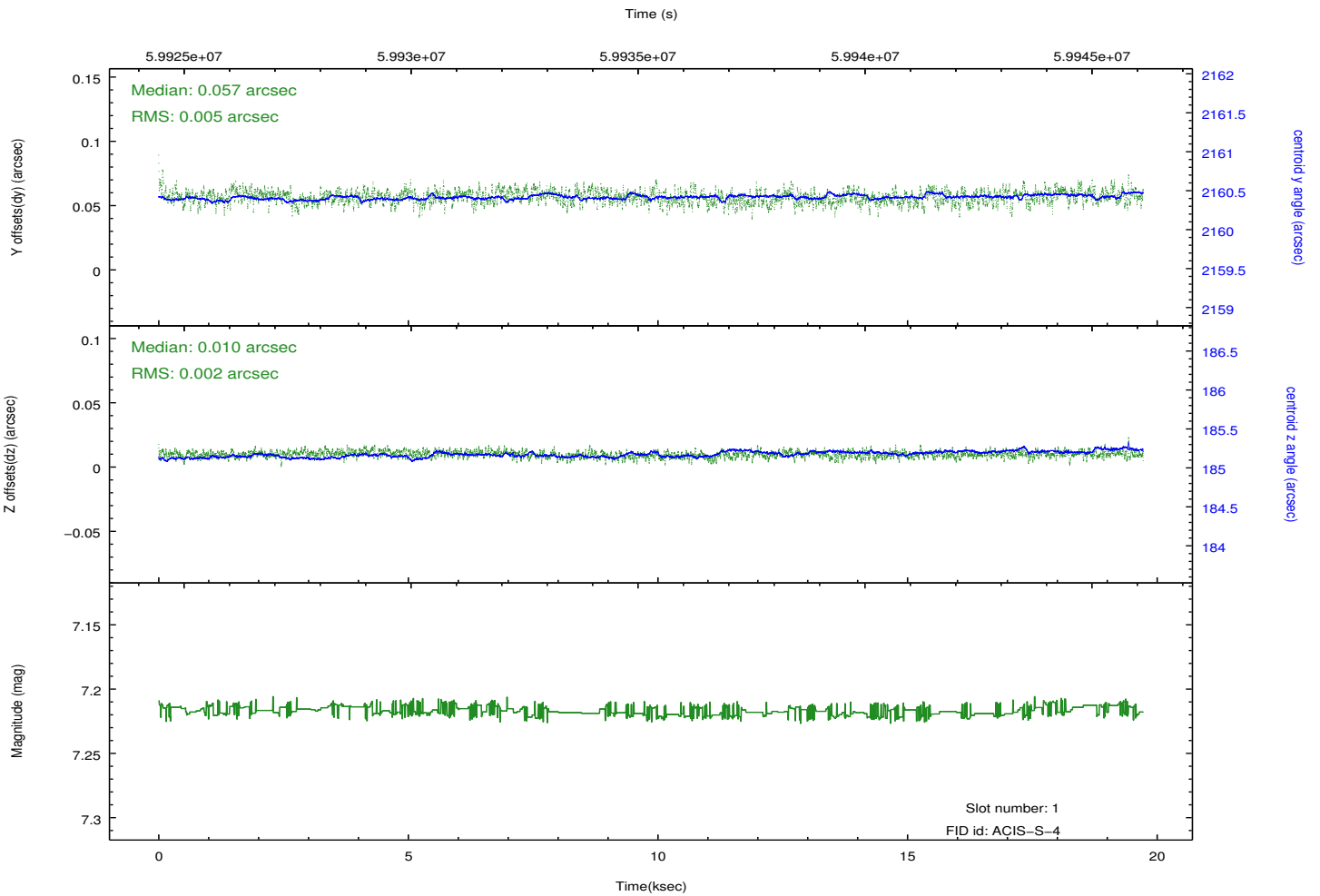
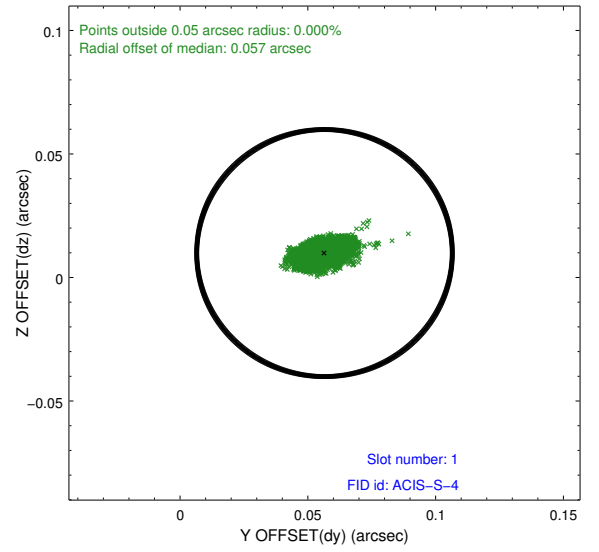
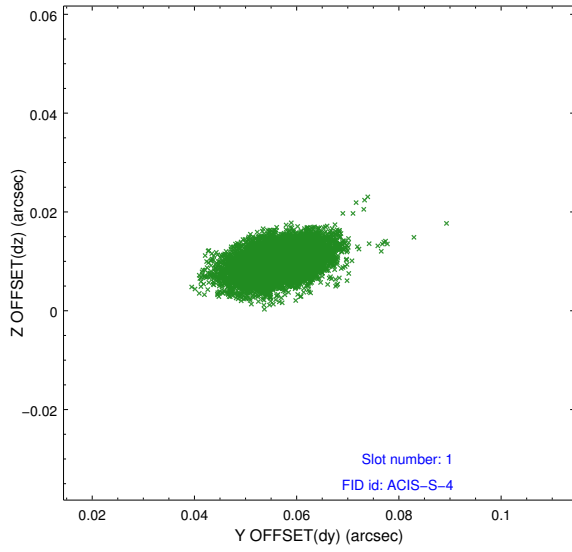


2.5 FID Slots

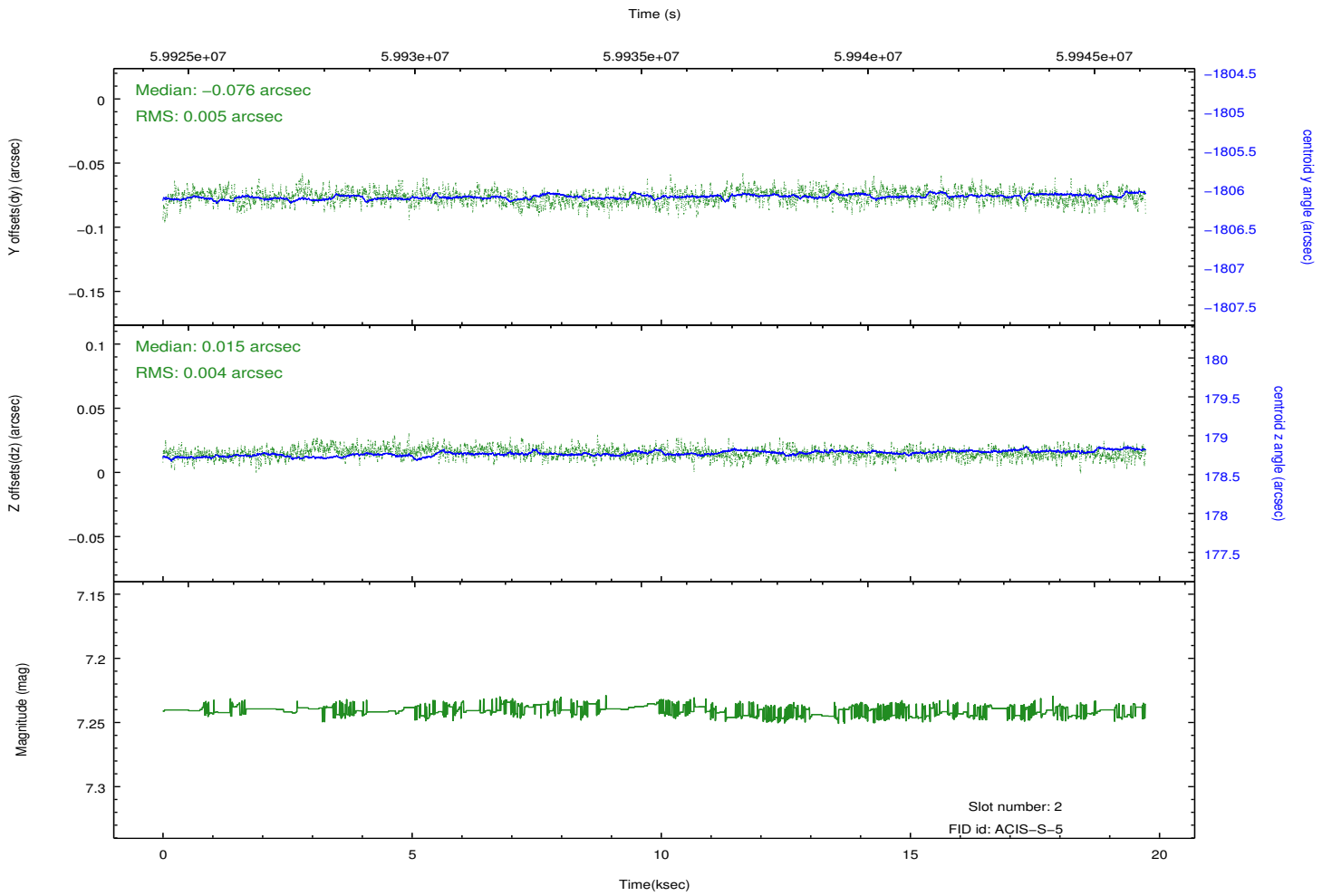
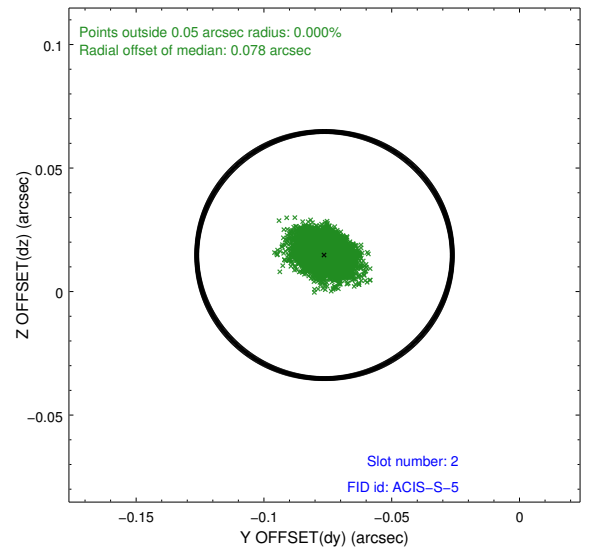
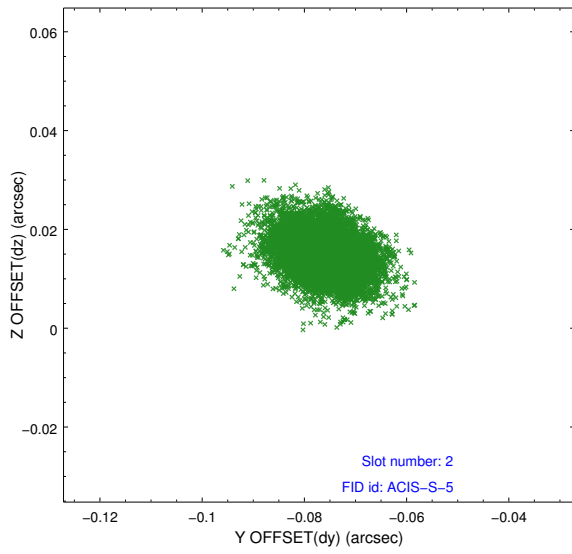
2.5.1 Slot 0



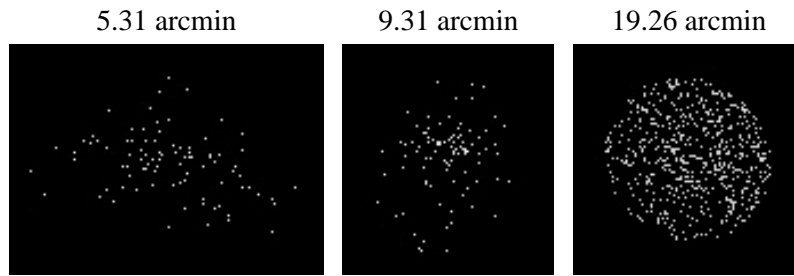
2.5.2 Slot 1



2.5.3 Slot 2



3 Point Sources



A Summary

A.1 Status

V&V Scientist	Beth Sundheim
V&V Date (YYYY-MM-DD)	2010.12.09
V&V Edition	1
V&V Disposition and Status	OK
V&V Charge Time	18.873

A.2 Comments

An image of Jupiter was inadvertently superposed on the bias map for chip 7. The region of that bias map containing the anomalous values due to the image of Jupiter was replaced with scaled values from another bias map for this chip taken near in time. The affected pixels are bounded by sky coords: (24.75466, 8.71222), (24.74069, 8.74416), (24.66718, 8.71275), (24.68115, 8.68080).

==

The focal plane temperature is approximately -110 C during this observation. This reprocessing of the data applies no CTI correction because none is available for this temperature at present.

The ACIS CTI correction has not been calibrated at this temperature because it was early in the mission, and ACIS had not yet been lowered to the standard -119.7 C. Both front- and back-illuminated chips are affected. However, a T_GAIN correction has been applied to the BI chip (ACIS-7) data included here.

The ACIS spectral response calibration is less accurate at these warmer temperatures than it is at -119.7 C. Users whose science objectives depend on the most accurate spectral response (ie: fitting line-rich spectra) may notice an effect. Users whose science objectives do not depend on the most accurate spectral response should not notice an effect.