

V&V Reference Report

L2 ASCDS Version : 10.4

Observation 14922 - L2 Version 3
Chandra X-Ray Center

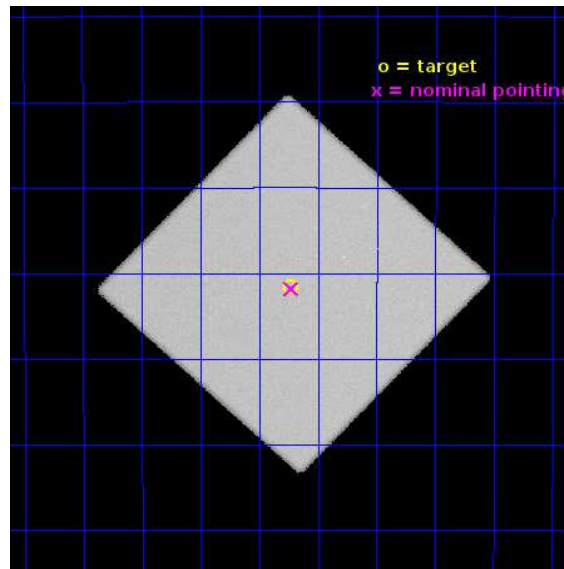
L2 Processing Date : Jun 10 2015

Contents

1	Front	2
2	OBI	3
2.1	OBI	3
2.1.1	Images	3
2.1.2	Parameters	4
2.1.3	Events	4
2.2	Compared Parameters	5
2.3	Aspect	6
2.4	Star Slots	9
2.4.1	Slot 3	9
2.4.2	Slot 4	10
2.4.3	Slot 5	11
2.4.4	Slot 6	12
2.4.5	Slot 7	13
2.5	FID Slots	14
2.5.1	Slot 0	14
2.5.2	Slot 1	15
2.5.3	Slot 2	16
A	Summary	17
A.1	Status	17
A.2	Comments	17

1 Front

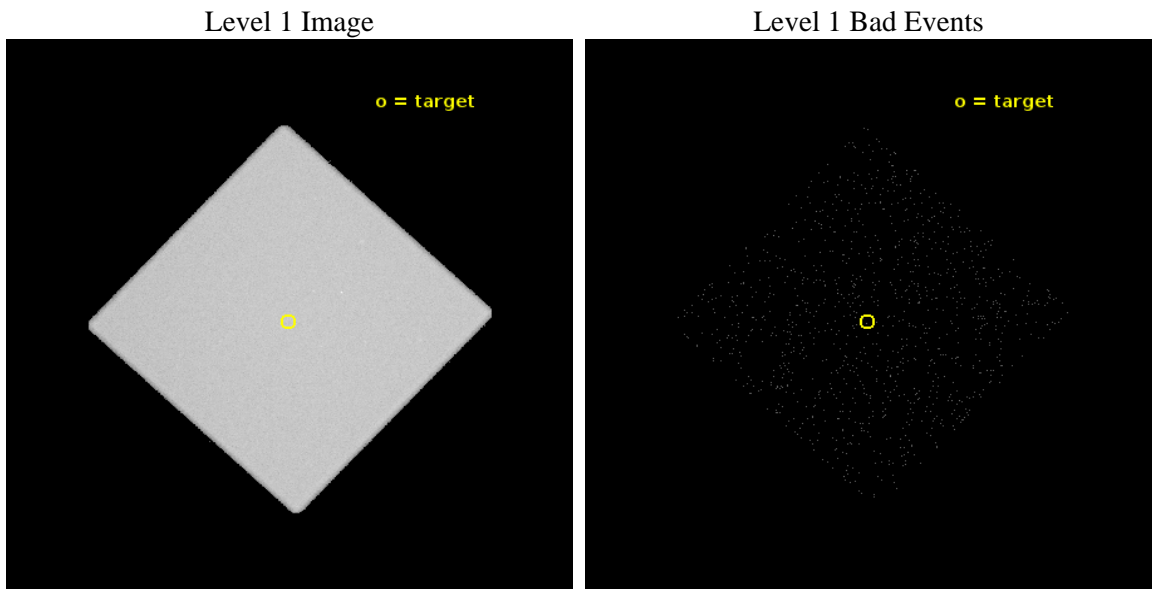
seq_num	601052	Sequence number
obs_id	14922	Observation id
title	Seeing through Baade's Window: Discovering X-Ray Sources that have Long-Term Optical Light Curves	Proposal title
observer	Dr. Rosanne Di Stefano	Principal investigator
object	Baade's Window HRC-7	Source name
ra_targ	271.058333	Observer's specified target RA [deg]
dec_targ	-28.526278	Observer's specified target Dec [deg]
ra_nom	271.05641638522	Nominal RA [deg]
dec_nom	-28.530192700951	Nominal Dec [deg]
roll_nom	268.16366396715	Nominal Roll [deg]
revision	3	Processing version of data
ontime	29185.08284694	[s]
livetime	28959.914274401	Ontime multiplied by DTCOR
l2events	1759092	Number of level 2 events



2 OBI

2.1 OBI

2.1.1 Images



2.1.2 Parameters

obi_num	0	Obi number	sched_exp_time	29000.000000	[s] Scheduled observation exposure time
ascdsver	10.4	Processing system revision	ontime	29185.08284694	[s]
caldbver	4.6.7	 	l1events	2408032	Number of level 1 events
date	2015-06-10T14:49:21	Date and time of file creation			
revision	3	Processing version of data			

2.1.3 Events

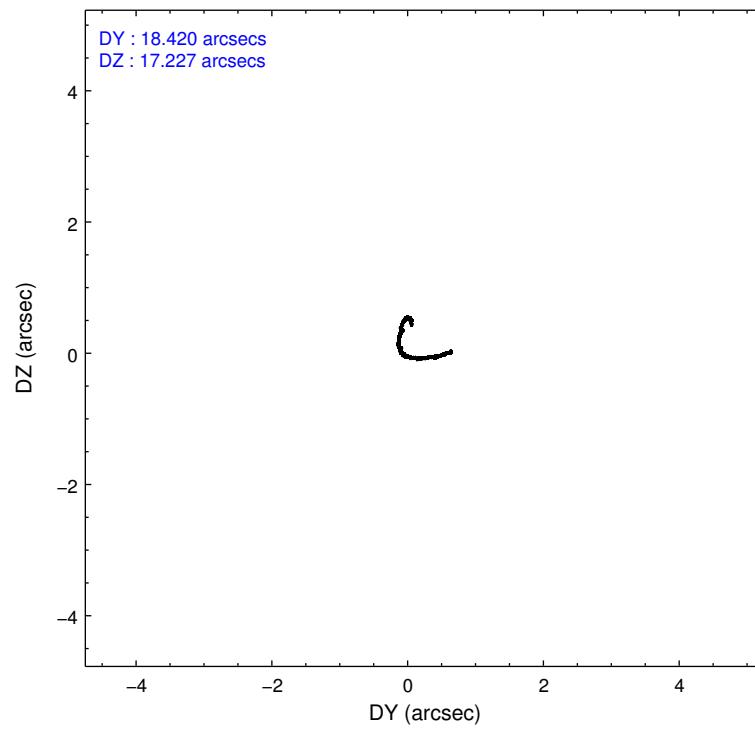
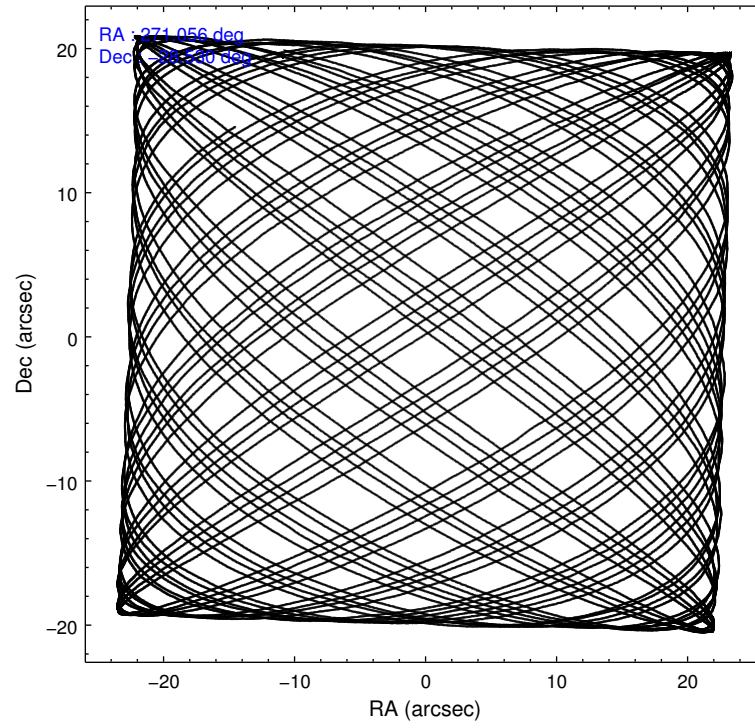
Level 1 Events

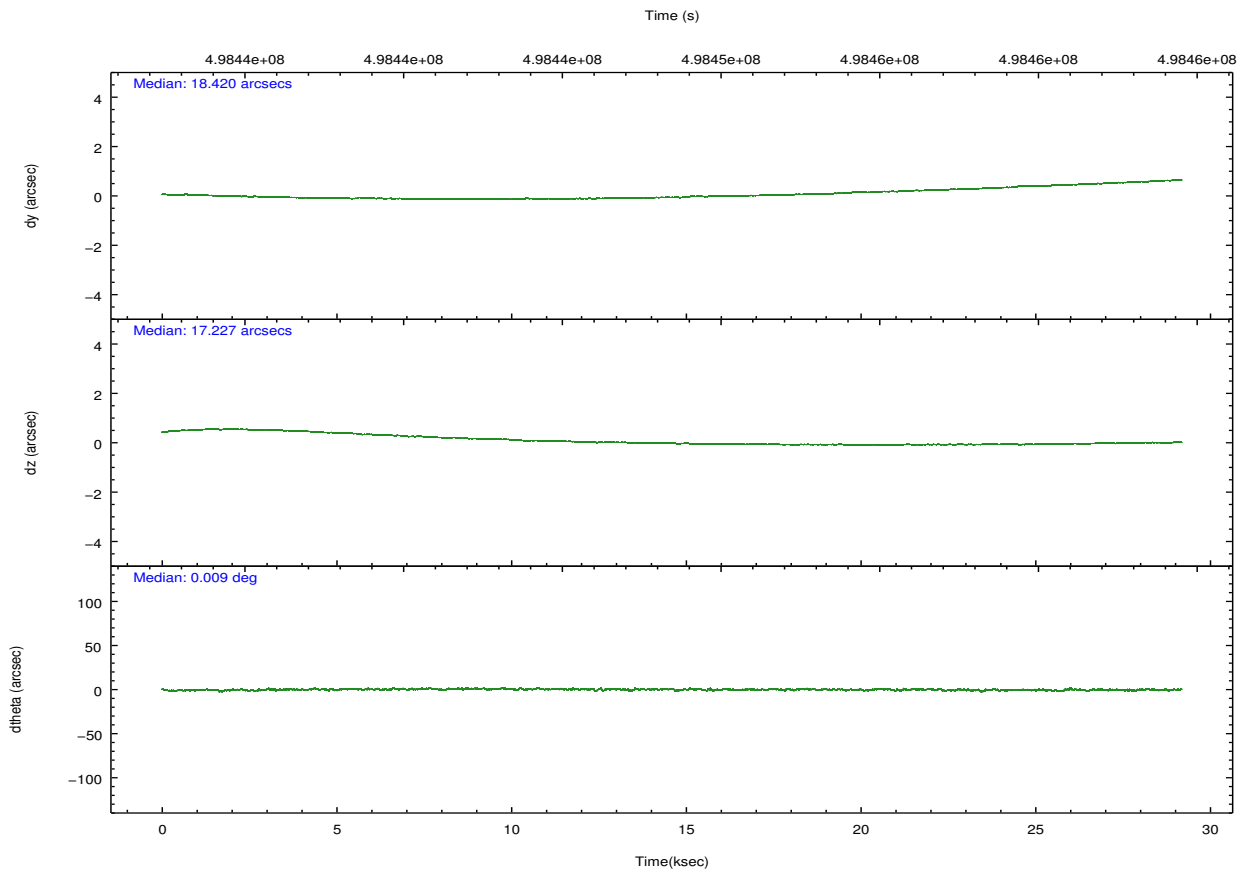
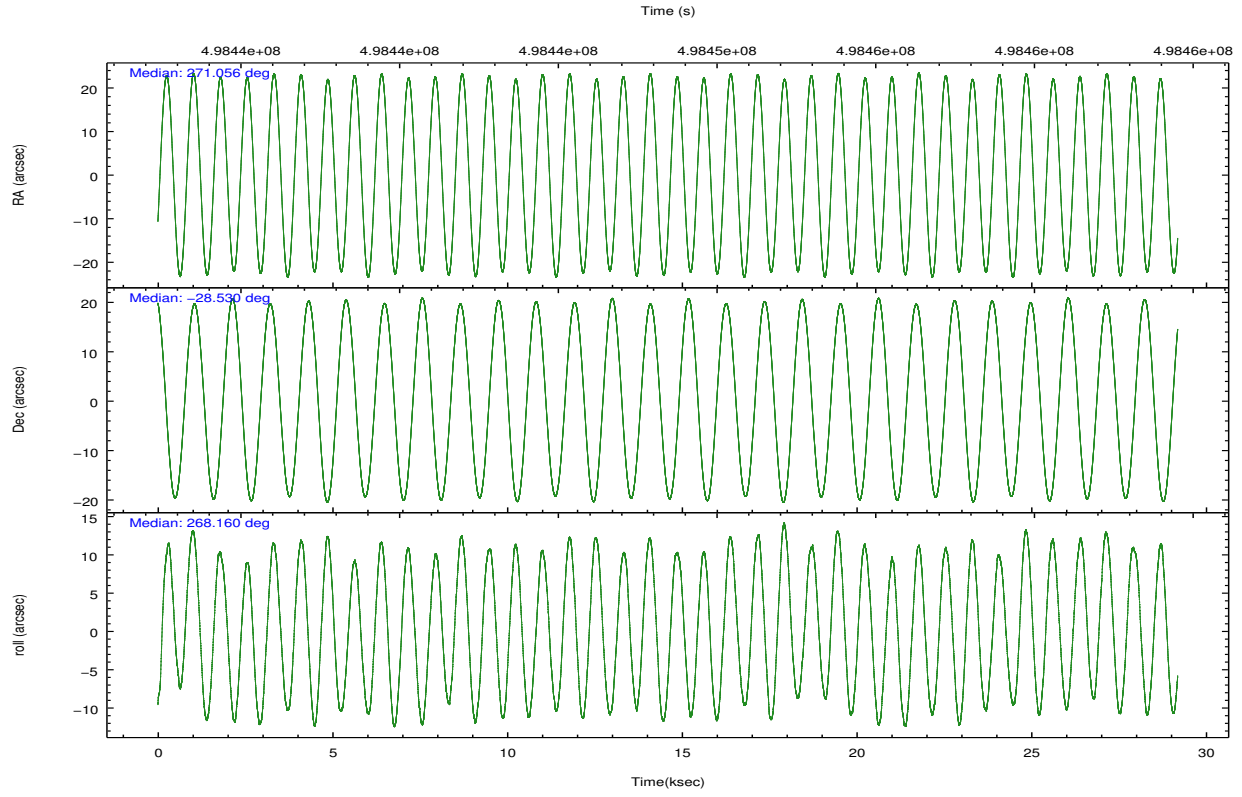
	segment 0
level 1 events	2408032
rejected events	41829
rejected %	1%

2.2 Compared Parameters

Parameter	Planned	Actual	Parameter	Planned	Actual
Instrument	HRC	HRC	Obspar format version number	7	7
Detector	HRC-I	HRC-I	Obspar file type	PREDICTED	ACTUAL
Grating	NONE	NONE	Obspar update status	NONE	UPDATED
Data mode	OBSERVING	OBSERVING			
Observation mode	POINTING	POINTING			
[deg] Pointing RA	271.041176	271.056416385215			
[deg] Pointing Dec	-28.506473	-28.53019270095149			
[deg] Pointing Roll	268.251879	268.1636639671474			
[mm] SIM focus pos	-1.040293	-1.038866356238299			
[mm] SIM defocus	0	0.001426264420575141			
[mm] SIM translation stage pos	126.985494	126.9829799899862			
[mm] SIM translation stage offset	0	0.002508901615314585			
[s] Observation start time (MET)	498434032.184000	498433438.70083			
Observation start date	2013-10-17T21:52:45	2013-10-17T21:43:58			
[s] Observation end time (MET)	498463032.184000	498463166.26495			
Observation end date	2013-10-18T05:56:05	2013-10-18T05:59:26			

2.3 Aspect





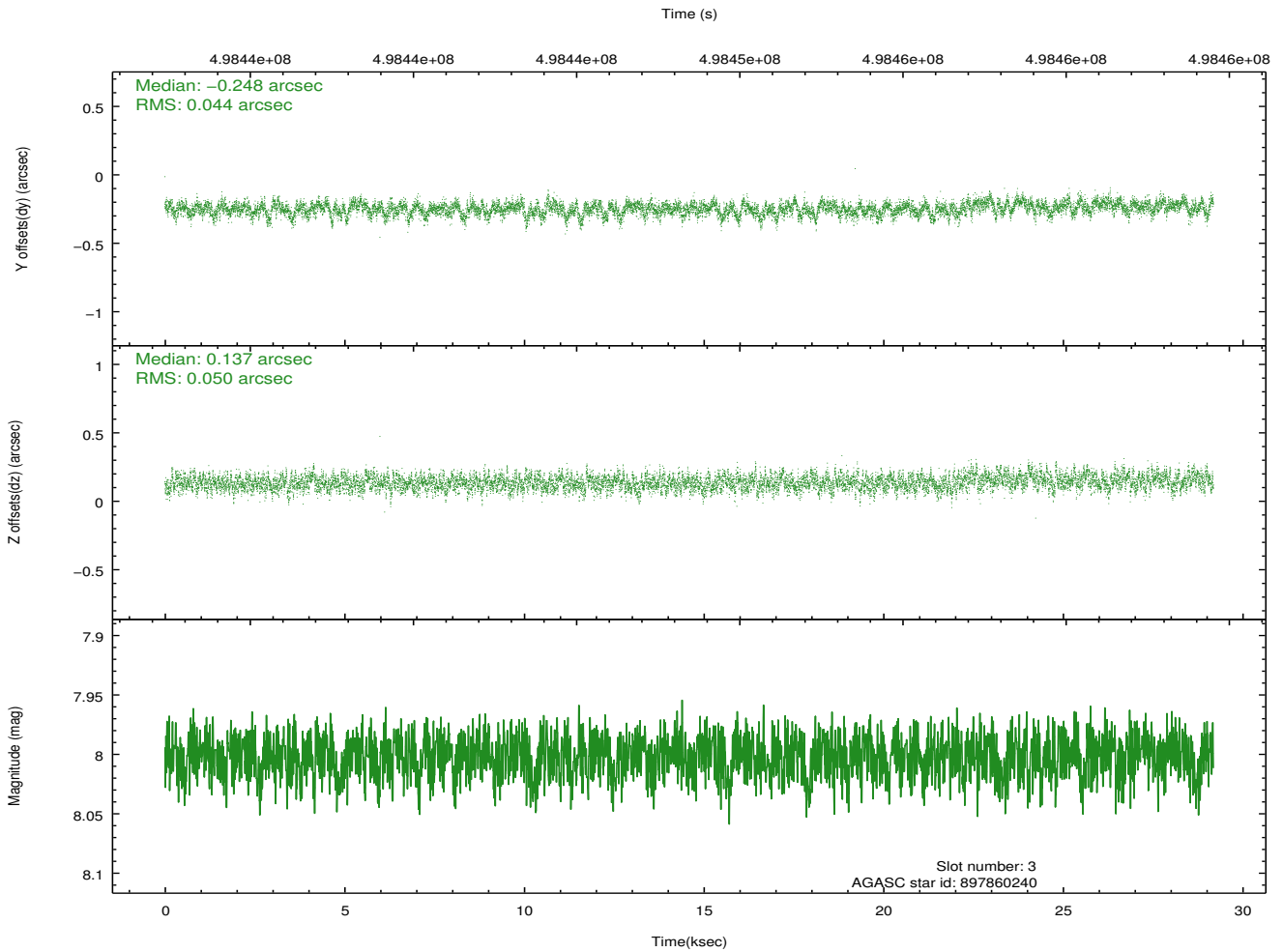
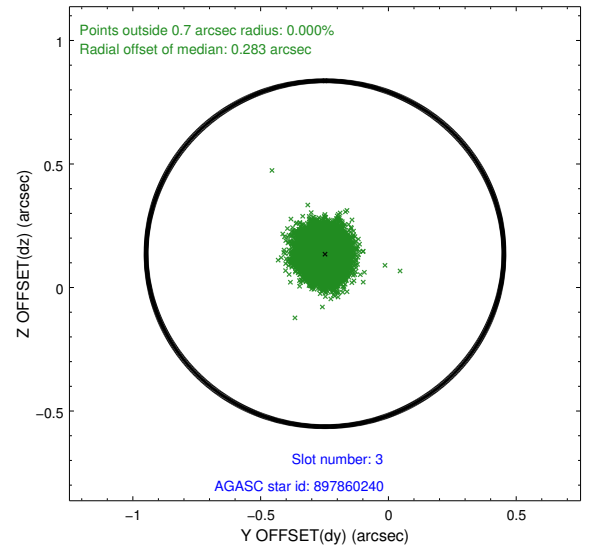
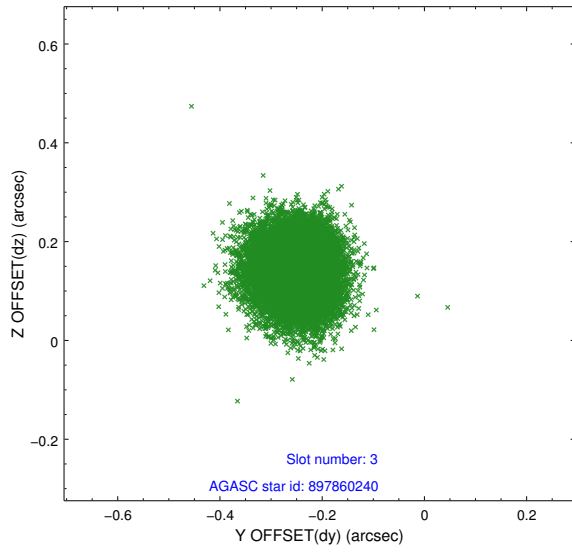
Slot Statistics

slot	status	used	id	mag	n_pts	med_dy	med_dz	dr1	dr2	ra	dec	mean_y	mean_z
0	FID		HRC-I-1	6.99	7119	-0.090	0.050	0.011	0.019	0.000000	0.000000	-774.49	-1305.43
1	FID		HRC-I-2	7.03	7119	0.280	-0.173	0.010	0.017	0.000000	0.000000	838.40	-1307.41
2	FID		HRC-I-3	7.07	7119	-0.072	0.034	0.011	0.020	0.000000	0.000000	-1202.84	998.93
3	GUIDE	used	897860240	8.00	14232	-0.248	0.137	0.071	0.114	270.464638	-27.877318	-2203.40	-1902.73
4	GUIDE	used	898368848	8.64	14228	-0.062	0.122	0.100	0.162	271.700599	-29.036638	1850.16	2133.33
5	GUIDE	used	898371304	8.41	14235	0.102	-0.049	0.092	0.153	270.531151	-28.390506	-363.91	-1626.89
6	GUIDE	used	898390056	9.38	14139	0.011	-0.107	0.177	0.286	270.373659	-28.786636	1078.70	-2074.20
7	GUIDE	used	898391736	9.34	14097	0.206	-0.107	0.145	0.243	270.367313	-28.729065	875.03	-2102.17

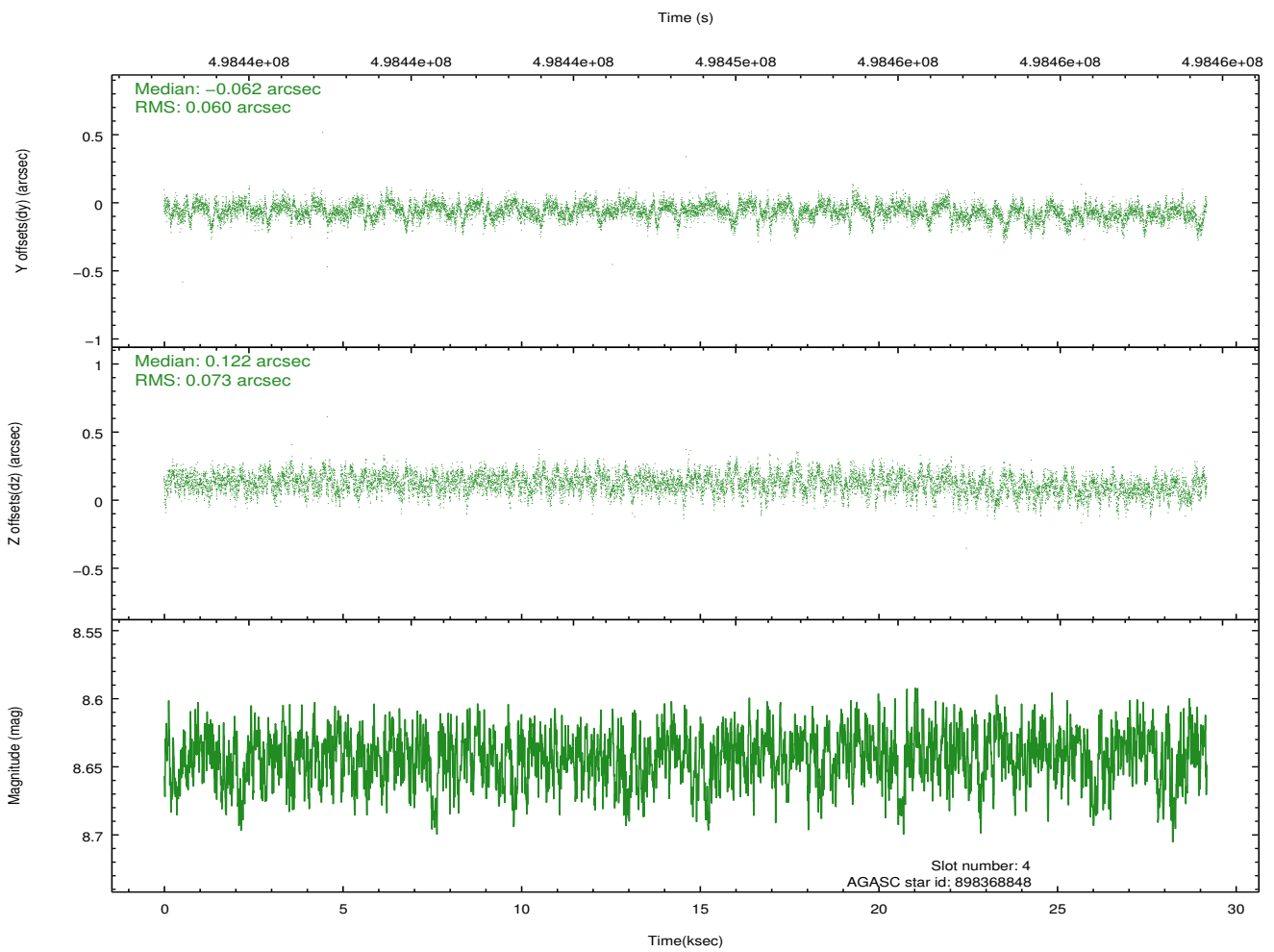
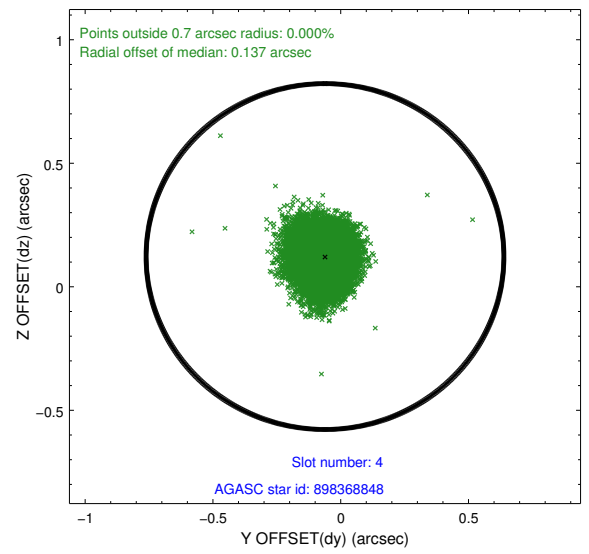
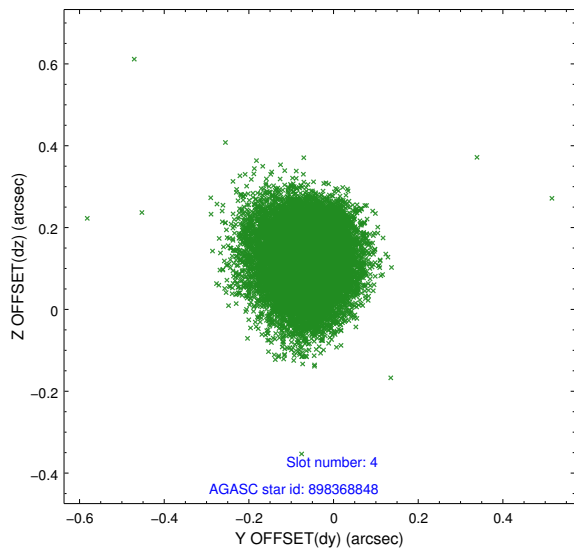
∞

2.4 Star Slots

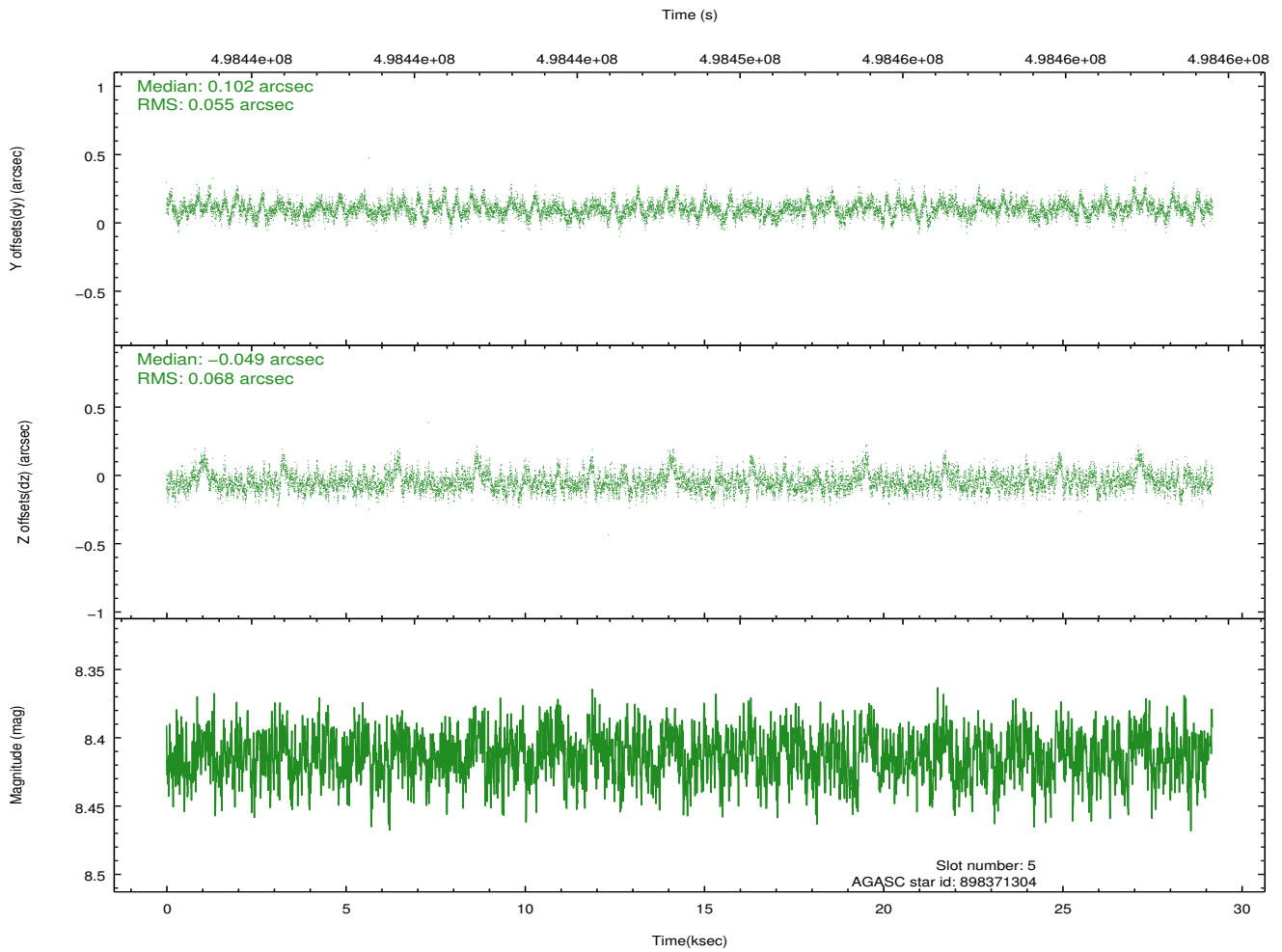
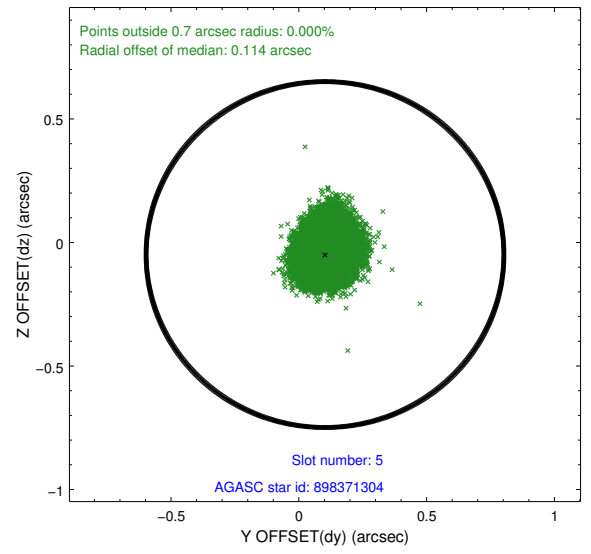
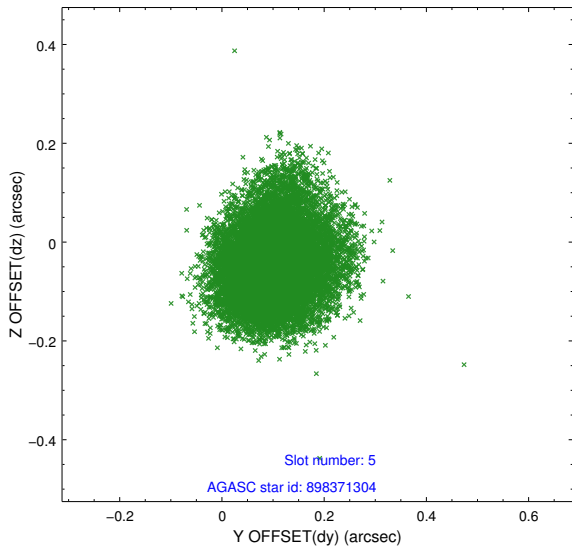
2.4.1 Slot 3



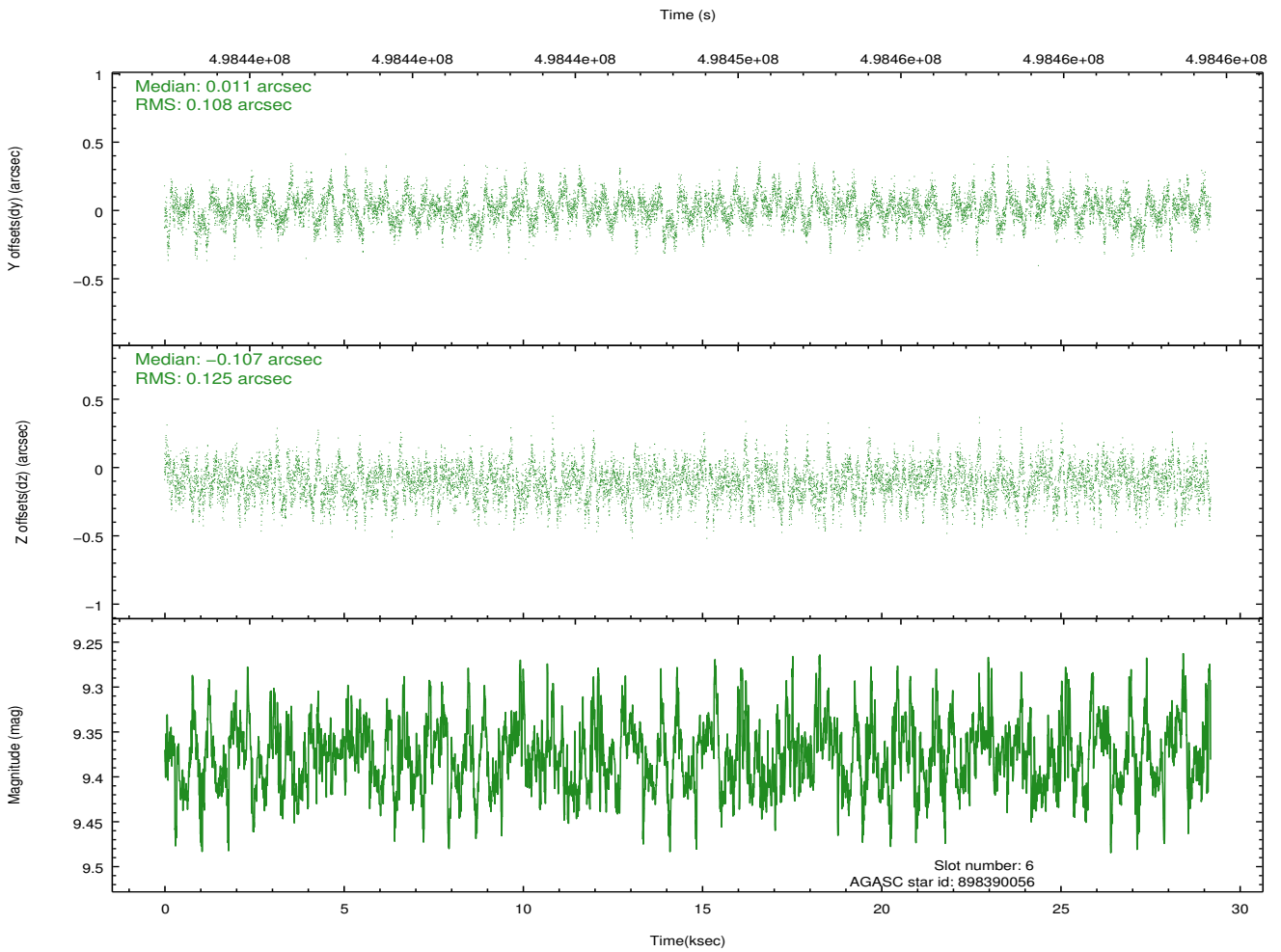
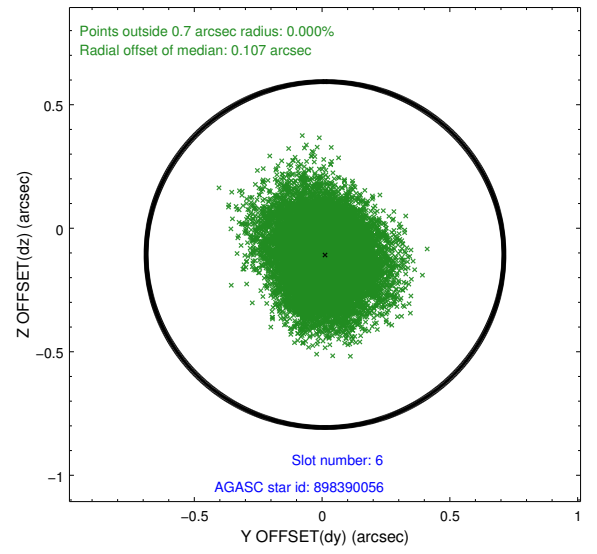
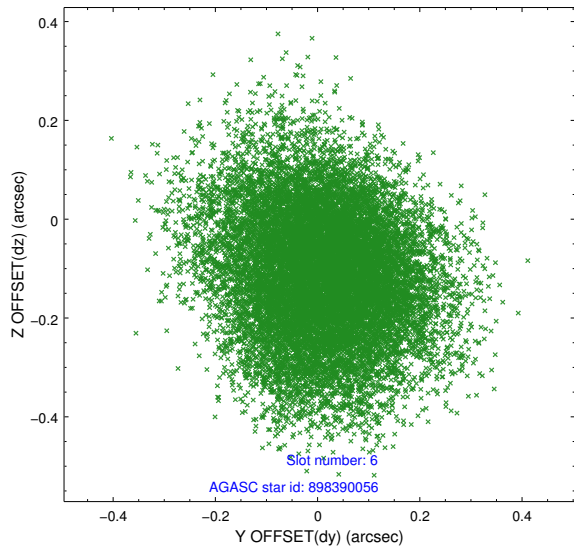
2.4.2 Slot 4



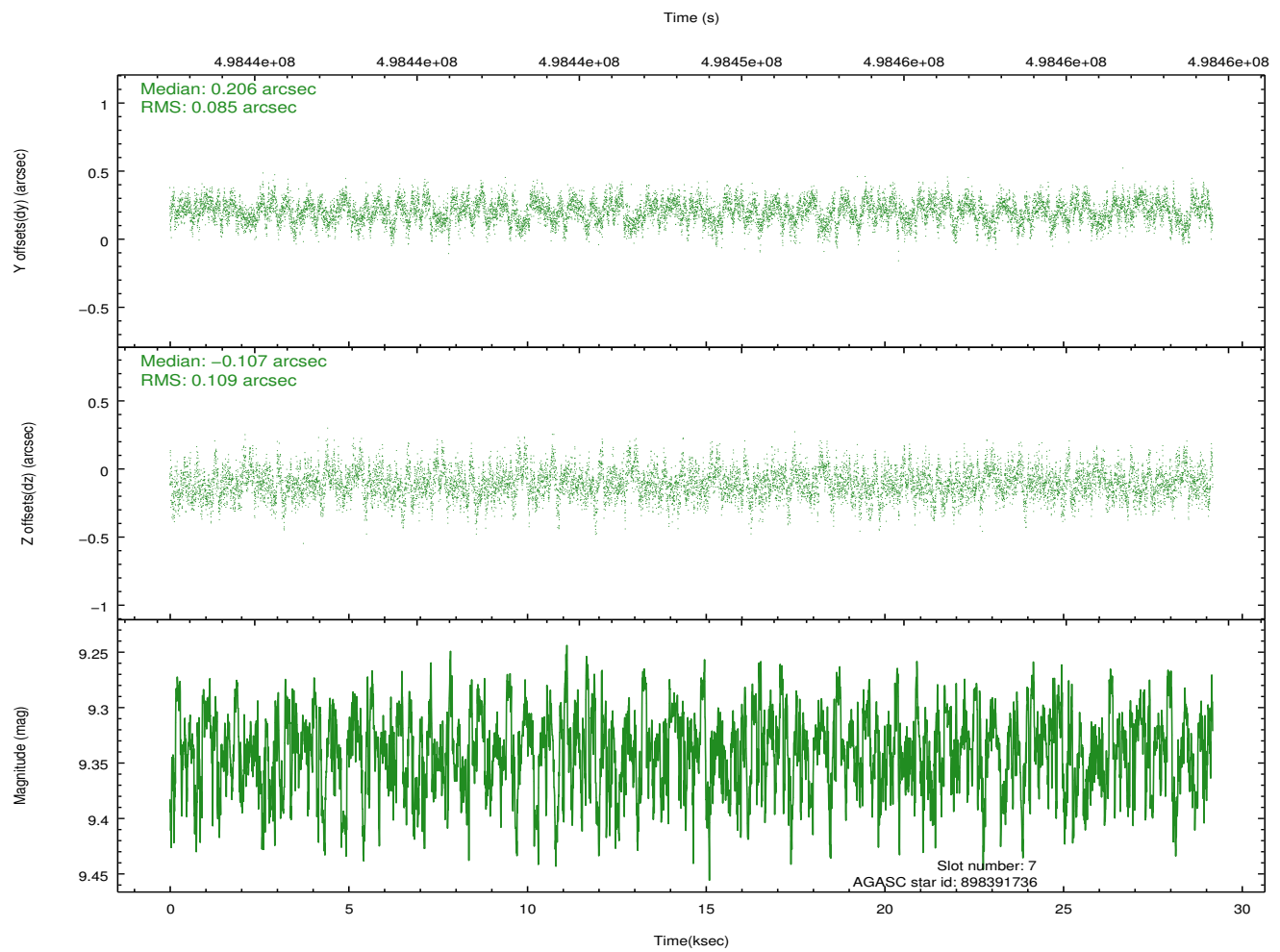
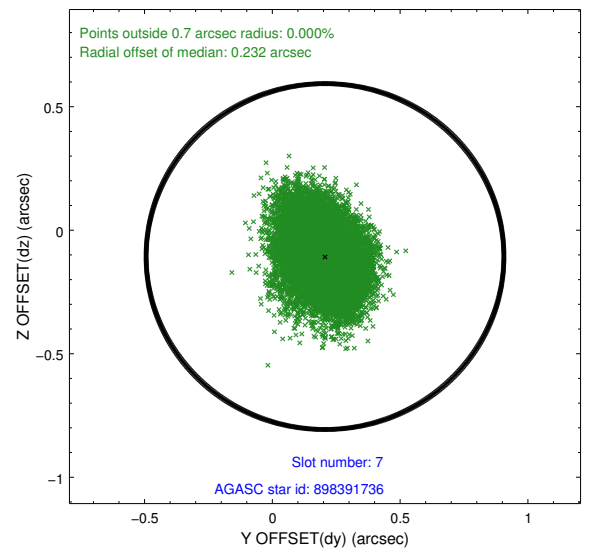
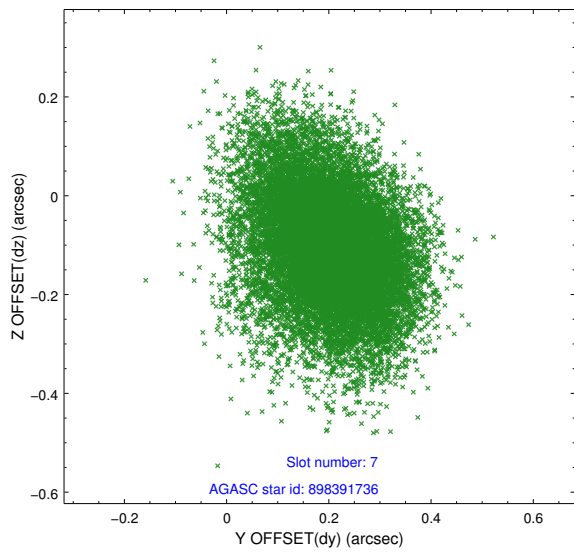
2.4.3 Slot 5



2.4.4 Slot 6

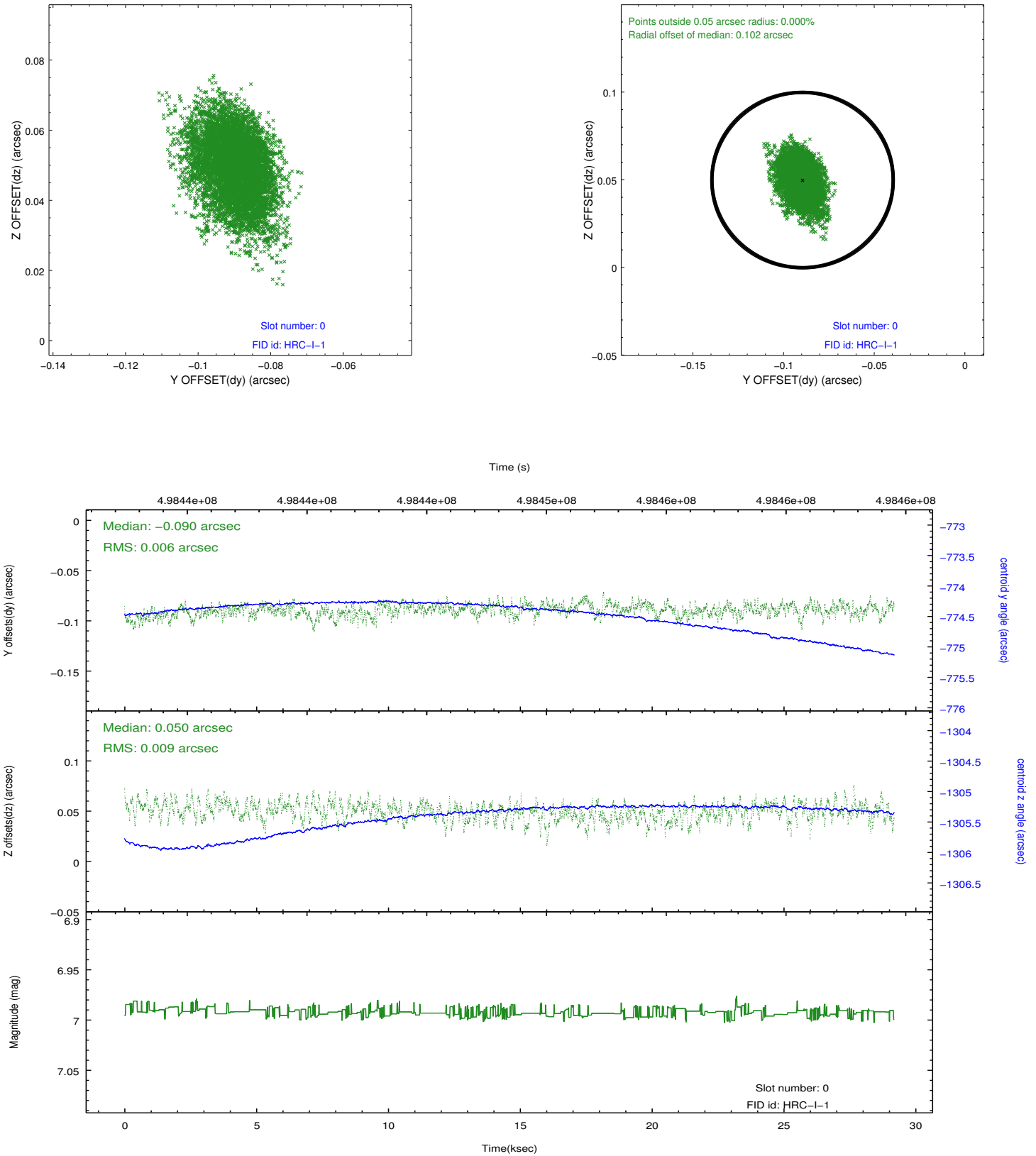


2.4.5 Slot 7

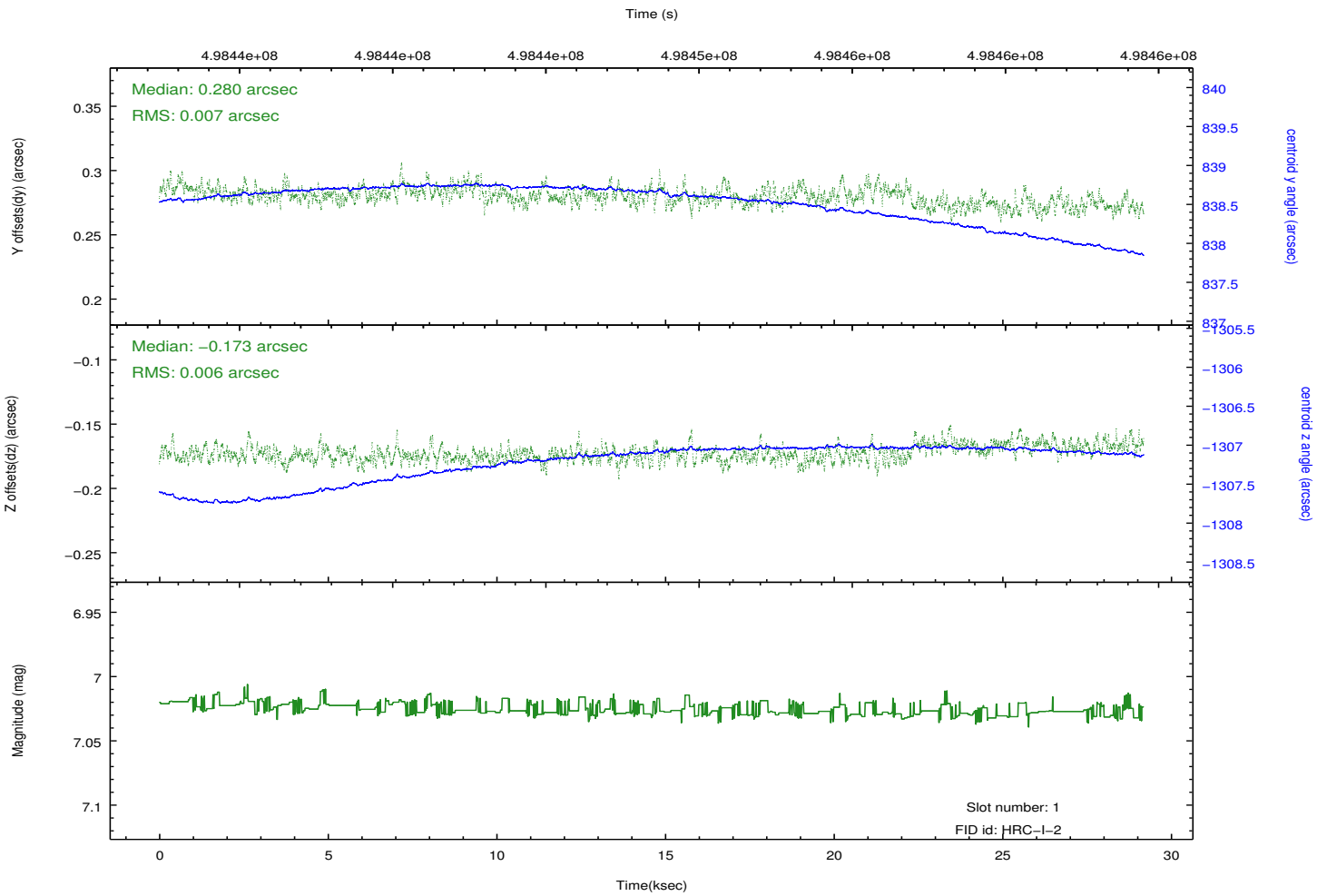
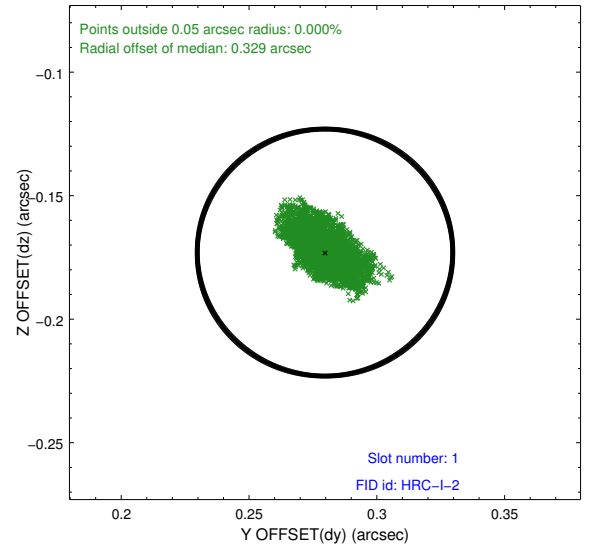
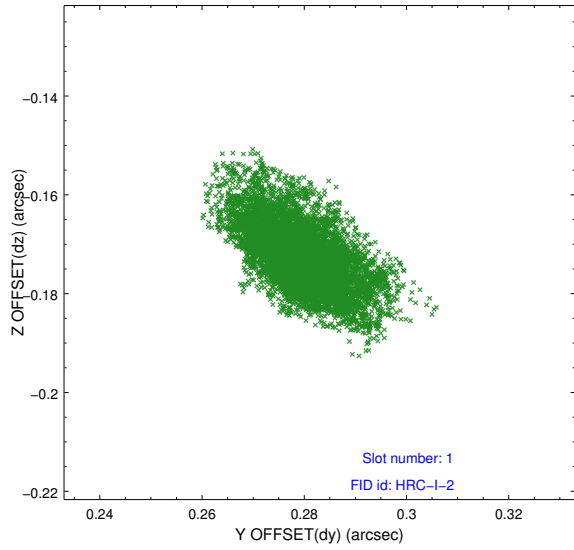


2.5 FID Slots

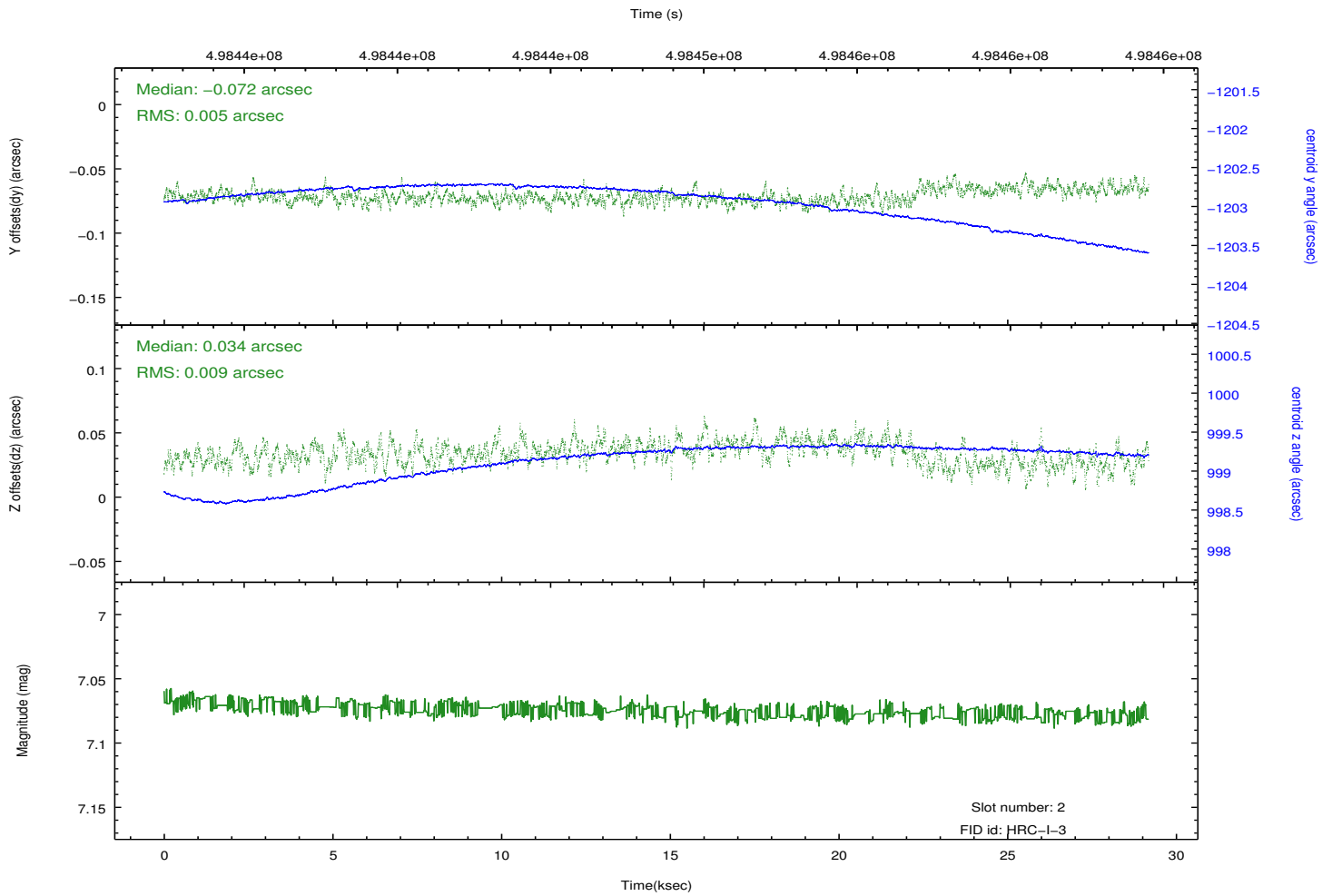
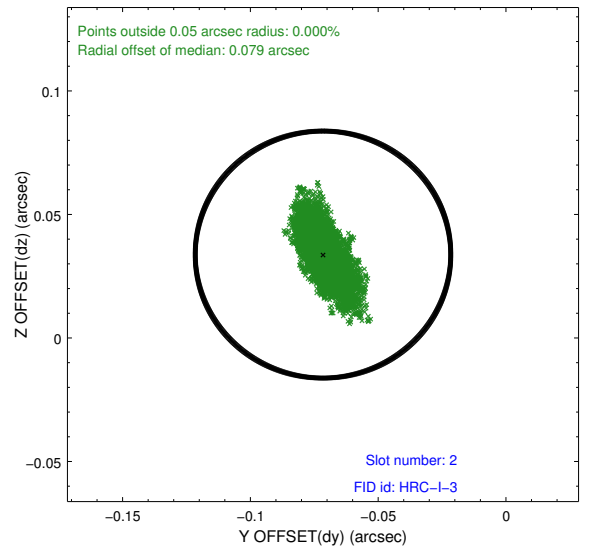
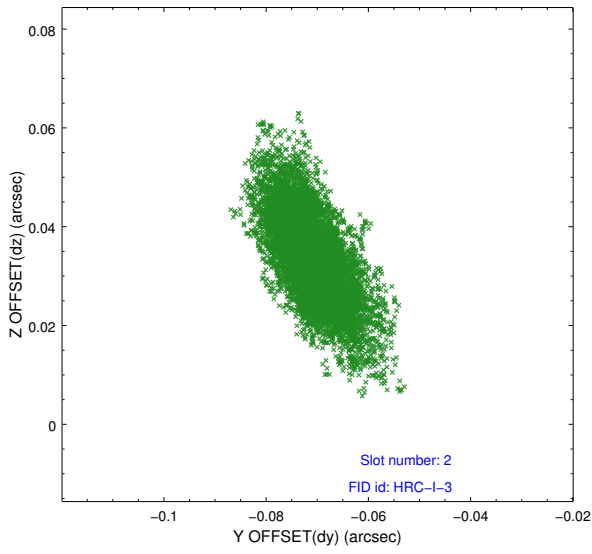
2.5.1 Slot 0



2.5.2 Slot 1



2.5.3 Slot 2



A Summary

A.1 Status

V&V Scientist	Beth Sundheim
V&V Date (YYYY-MM-DD)	2015.06.18
V&V Edition	1
V&V Disposition and Status	OK
V&V Charge Time	29.18508284694

A.2 Comments