

V&V Reference Report

L2 ASCDS Version : 8.5.1.1

Observation 14932 - L2 Version 2
Chandra X-Ray Center

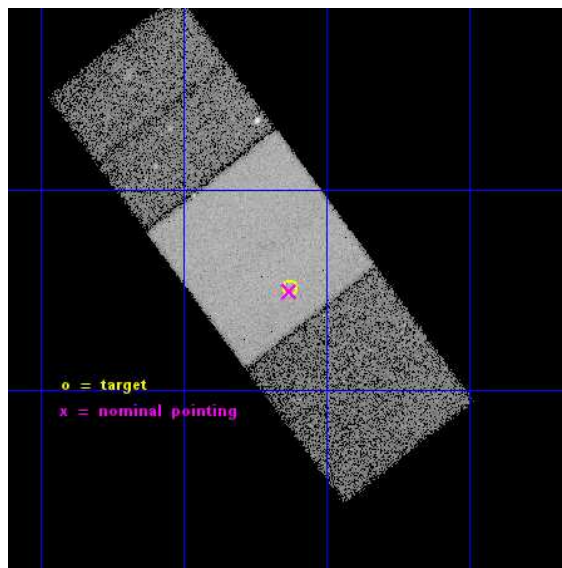
L2 Processing Date : Dec 3 2014

Contents

1	Front	2
2	OBI	3
2.1	OBI	3
2.1.1	Images	3
2.1.2	Bias	3
2.1.3	Parameters	4
2.1.4	Events	4
2.2	Compared Parameters	5
2.3	Aspect	6
2.4	Star Slots	9
2.4.1	Slot 3	9
2.4.2	Slot 4	10
2.4.3	Slot 5	11
2.4.4	Slot 6	12
2.4.5	Slot 7	13
2.5	FID Slots	14
2.5.1	Slot 0	14
2.5.2	Slot 1	15
2.5.3	Slot 2	16
A	Summary	17
A.1	Status	17
A.2	Comments	17

1 Front

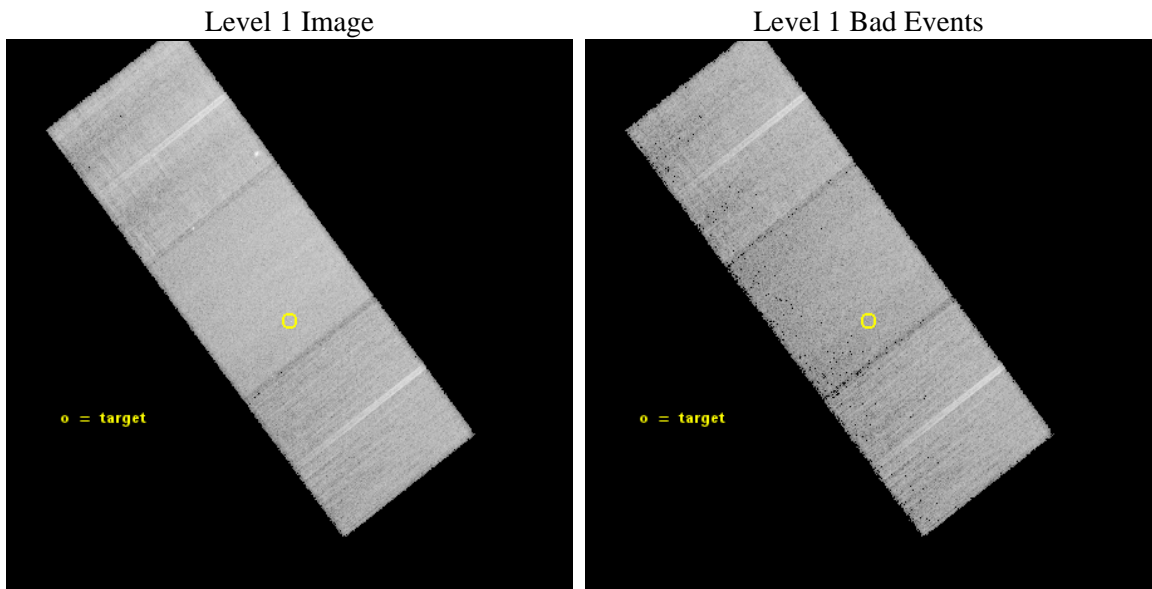
seq_num	601062	Sequence number
obs_id	14932	Observation id
title	Testing supermassive black hole feedback in a pristine environment	
observer	Dr. Brendan Miller	Principal investigator
object	NGC 5373	Source name
dtcycle	0	
cycle	P	events from which exps? Prim/Second/Both
ra_targ	209.28125	Observer's specified target RA [deg]
dec_targ	5.251889	Observer's specified target Dec [deg]
ra_nom	209.28230393679	Nominal RA [deg]
dec_nom	5.2490400694392	Nominal Dec [deg]
roll_nom	232.74799702541	Nominal Roll [deg]
revision	2	Processing version of data
ontime	47116.900362372	Sum of GTIs [s]
livetime	46501.283372181	Livetime [s]
ontime6	47113.759342015	Sum of GTIs [s]
ontime7	47116.900362372	Sum of GTIs [s]
ontime8	47116.900362372	Sum of GTIs [s]
l2events	181934	Number of level 2 events



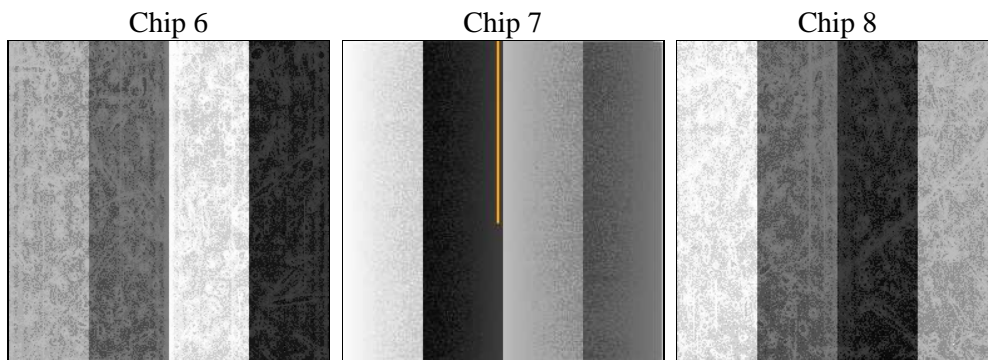
2 OBI

2.1 OBI

2.1.1 Images



2.1.2 Bias



2.1.3 Parameters

obi_num	2	Obi number	sched_exp_time	47000.000000	[s] Scheduled observation exposure time
ascdsver	10.3	Processing system revision	ontime	47116.900362372	Sum of GTIs [s]
caldsver	4.6.4	 	ontime6	47113.759342015	Sum of GTIs [s]
date	2014-12-03T10:14:03	Date and time of file creation	ontime7	47116.900362372	Sum of GTIs [s]
revision	2	Processing version of data	ontime8	47116.900362372	Sum of GTIs [s]
			l1events	838880	Number of level 1 events

2.1.4 Events

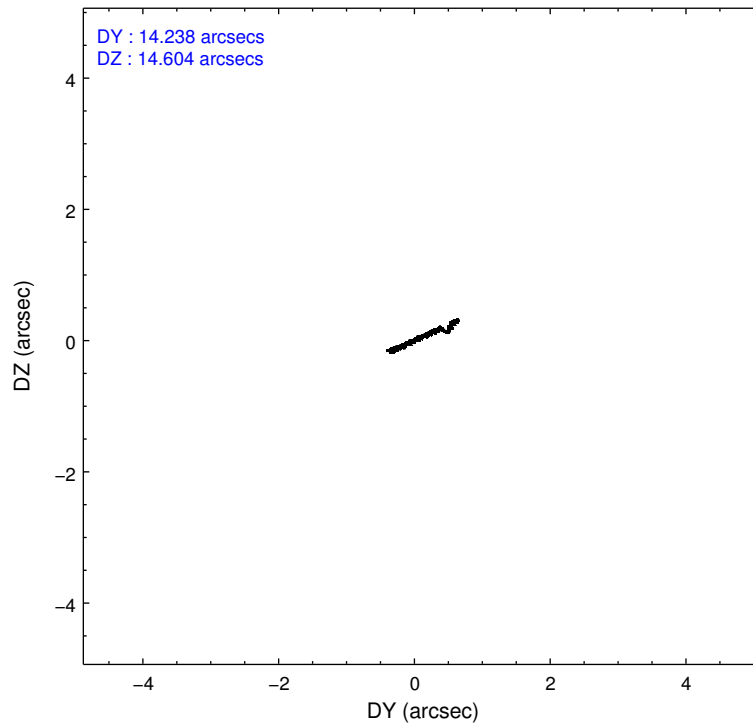
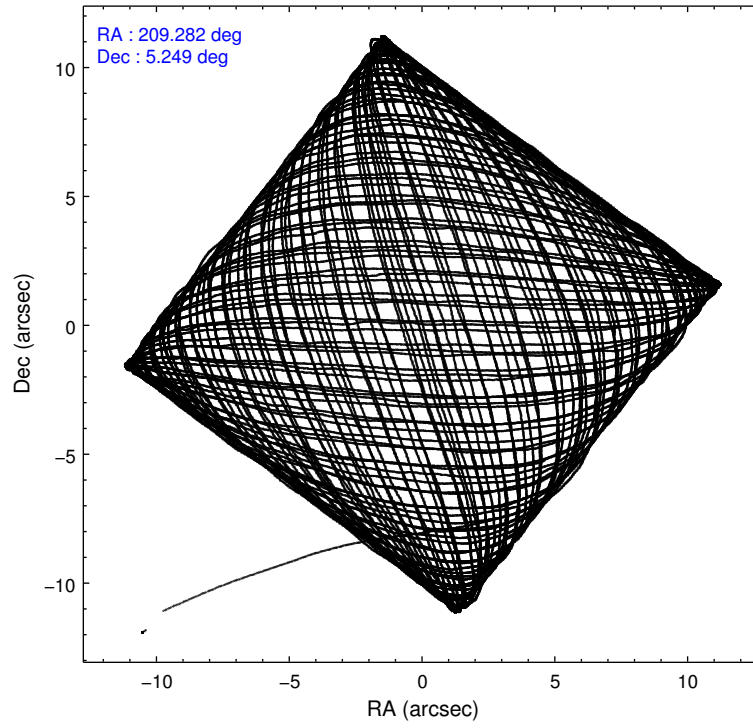
	ccd 6	ccd 7	ccd 8
level 1 events	232448	304212	302220
rejected events	205044	170466	222598
rejected %	88%	56%	73%

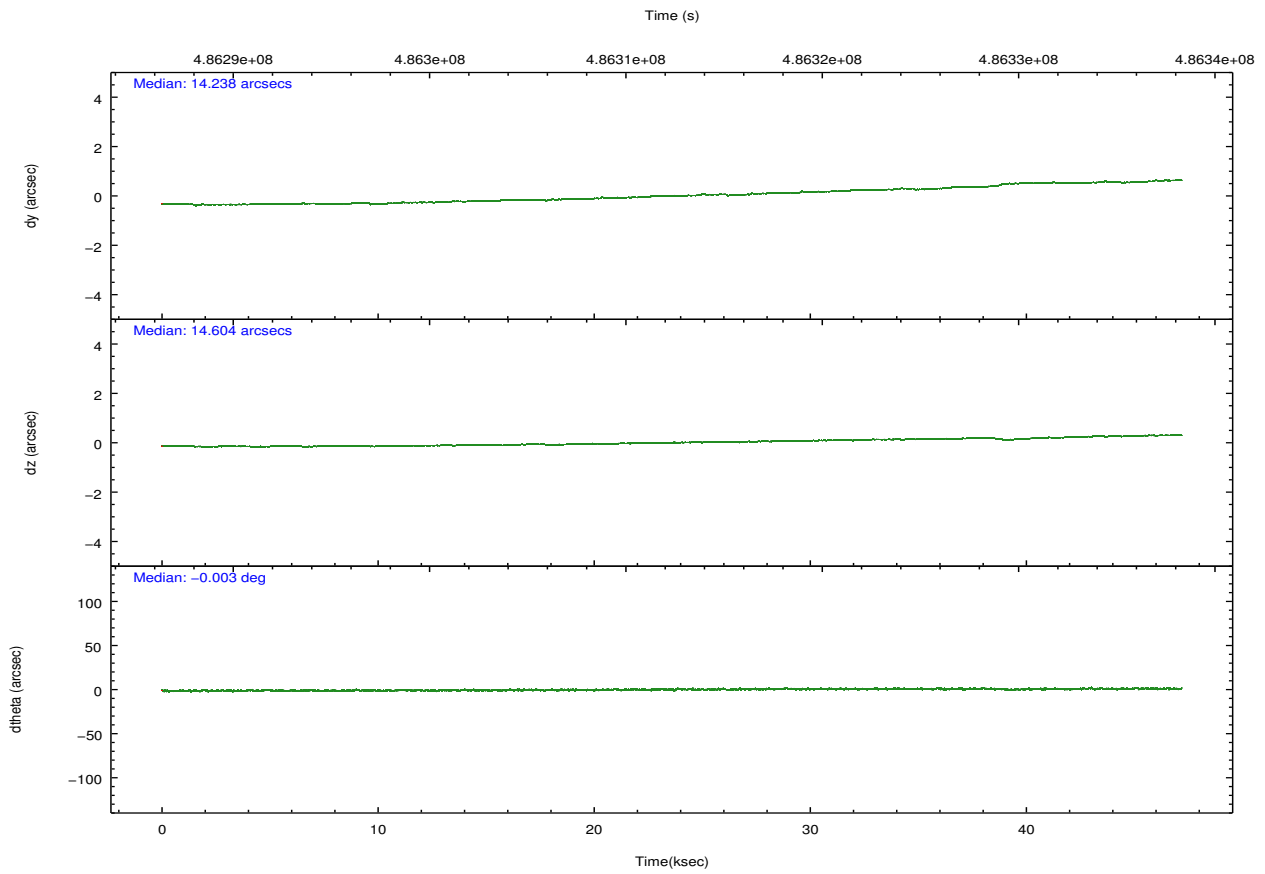
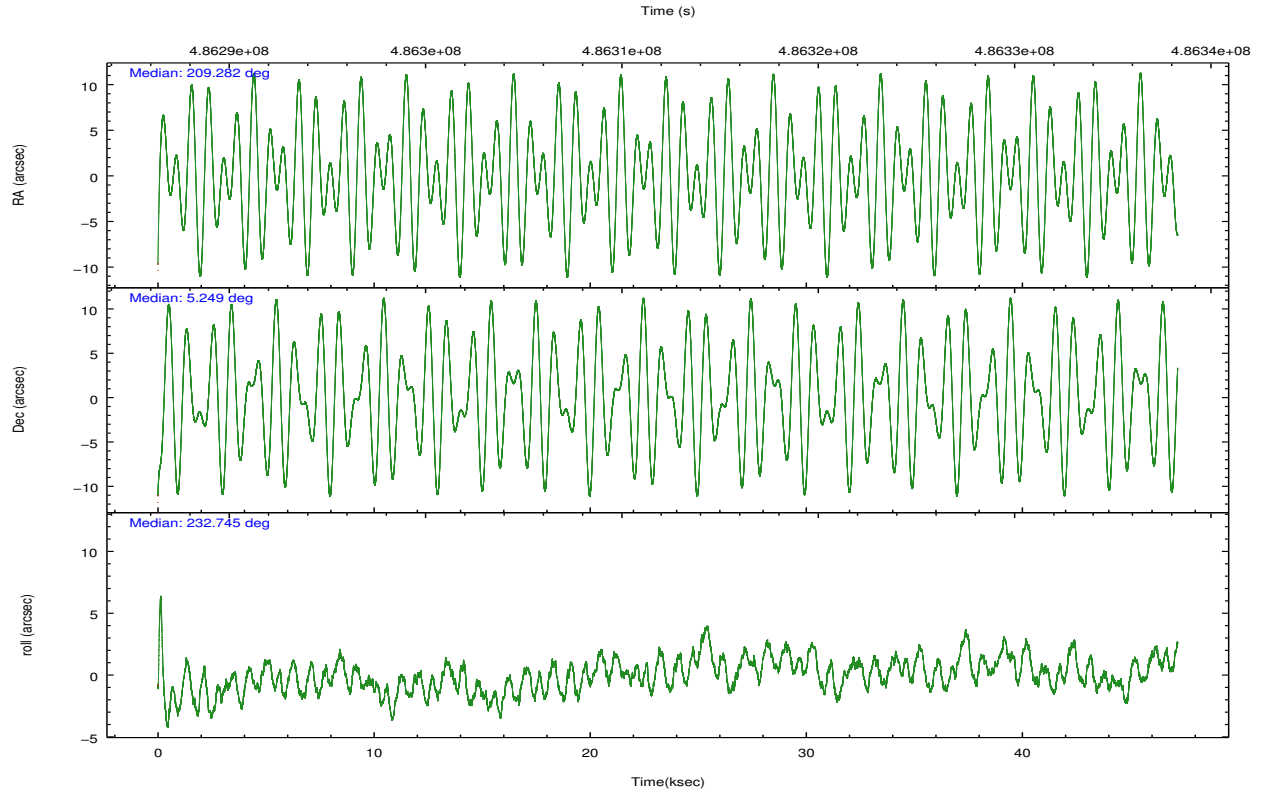
	ccd 6	ccd 7	ccd 8
grade 0 events	9140	11705	23039
	3%	3%	7%
grade 1 events	113	330	222
	0%	0%	0%
grade 2 events	6191	27478	19494
	2%	9%	6%
grade 3 events	2838	11357	7971
	1%	3%	2%
grade 4 events	2733	11189	7516
	1%	3%	2%
grade 5 events	11904	31446	17349
	5%	10%	5%
grade 6 events	6502	72023	21602
	2%	23%	7%
grade 7 events	193027	138684	205027
	83%	45%	67%

2.2 Compared Parameters

Parameter	Planned	Actual	Parameter	Planned	Actual
Instrument	ACIS	ACIS	Obspar format version number	7	7
Detector	ACIS-678	ACIS-678	Obspar file type	PREDICTED	ACTUAL
Grating	NONE	NONE	Obspar update status	NONE	UPDATED
Data mode	VFAINT	VFAINT	CCD I0 on	N	N
Observation mode	POINTING	POINTING	CCD I1 on	N	N
[deg] Pointing RA	209.285395	209.2823039367917	CCD I2 on	N	N
[deg] Pointing Dec	5.276223	5.24904006943917	CCD I3 on	N	N
[deg] Pointing Roll	232.591089	232.7479970254057	CCD S0 on	N	N
[mm] SIM focus pos	-0.684267	-0.6828225247311905	CCD S1 on	N	N
[mm] SIM defocus	0	0.001444936568705701	CCD S2 on	O1	Y
[mm] SIM translation stage pos	-190.132523	-190.1400660498719	CCD S3 on	Y	Y
[mm] SIM translation stage offset	0	0.00754346686406393	CCD S4 on	O2	Y
[s] Observation start time (MET)	486288922.184000	486287619.56405	CCD S5 on	N	N
Observation start date	2013-05-30T08:14:15	2013-05-30T07:53:39	Number of optional ACIS chips dropped	0	0
[s] Observation end time (MET)	486335922.184000	486336692.46671	On-chip summing requested	N	N
Observation end date	2013-05-30T21:17:35	2013-05-30T21:31:32	Subarray requested	NONE	NONE
Read mode	TIMED	TIMED	Alternating exposures requested	N	N
			[s] Primary exposure time	0.000000	3.1

2.3 Aspect





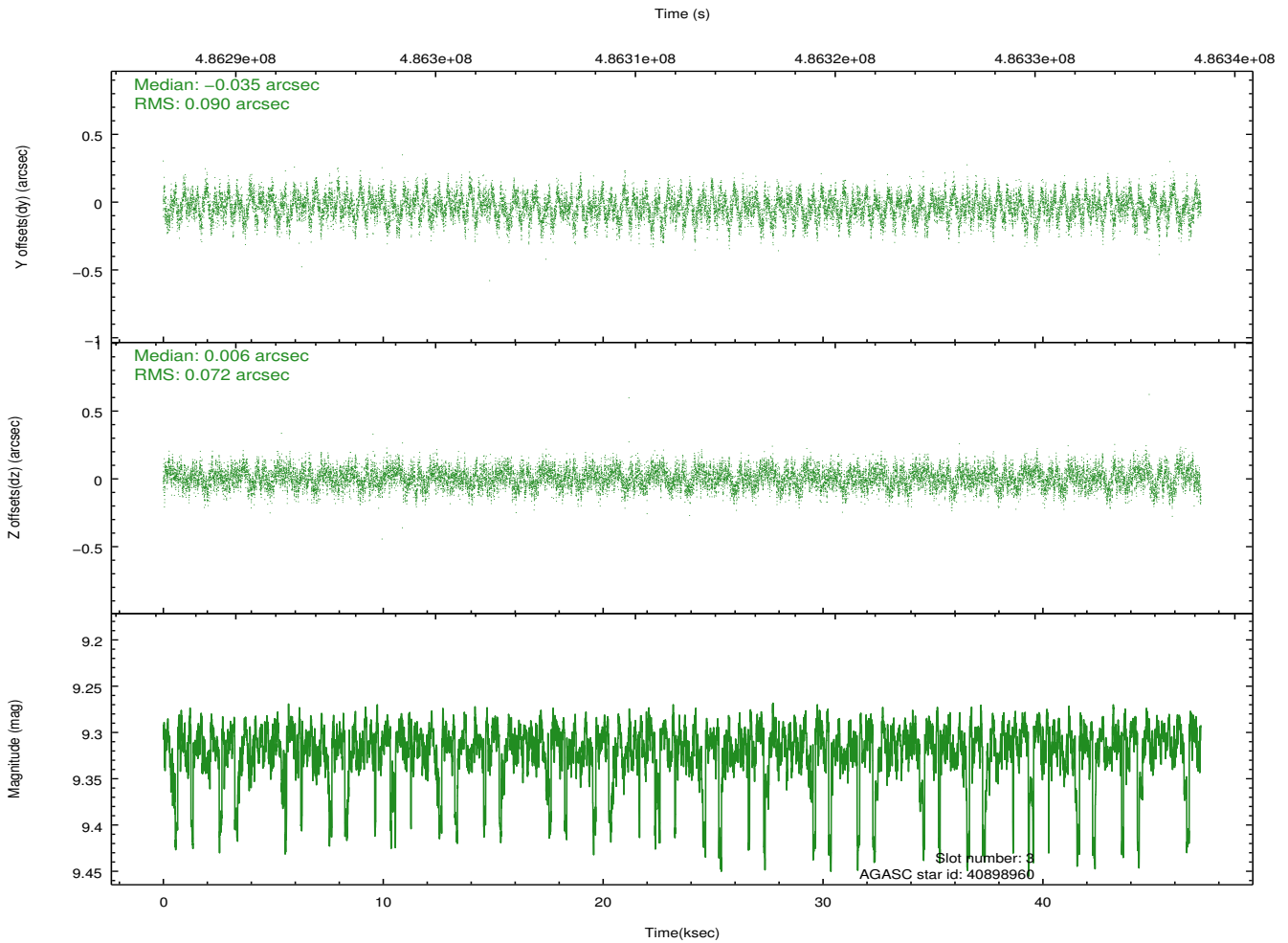
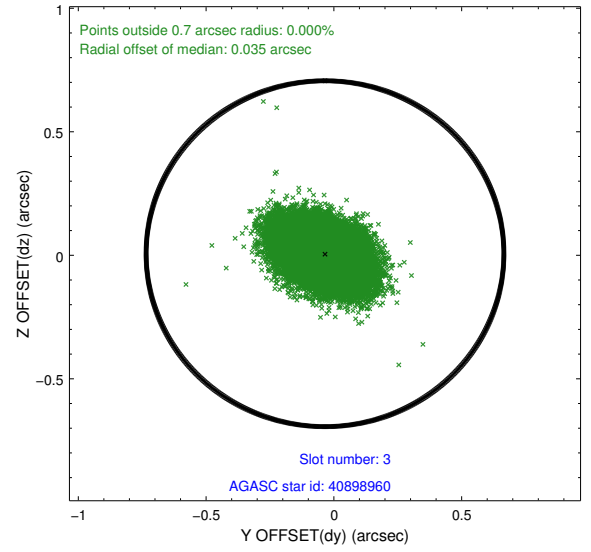
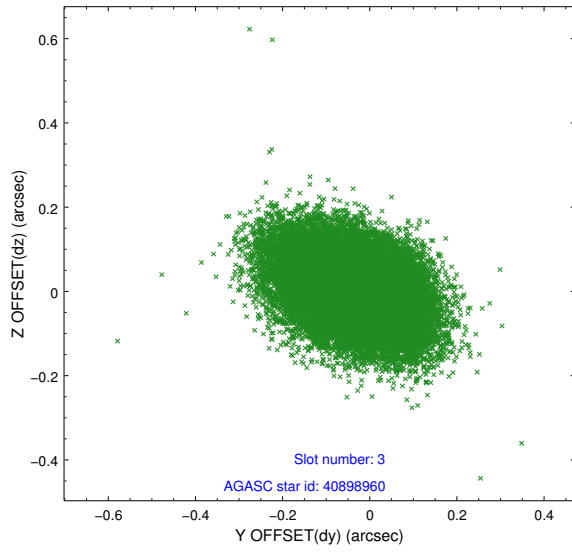
Slot Statistics

slot	status	used	id	mag	n_pts	med_dy	med_dz	dr1	dr2	ra	dec	mean_y	mean_z
0	FID		ACIS-S-2	7.04	11511	-0.143	-0.088	0.010	0.019	0.000000	0.000000	-767.41	-1736.07
1	FID		ACIS-S-4	7.13	11511	0.183	0.073	0.009	0.015	0.000000	0.000000	2146.24	172.53
2	FID		ACIS-S-6	7.27	11510	-0.067	0.022	0.010	0.016	0.000000	0.000000	394.69	809.90
3	GUIDE	used	40898960	9.32	22908	-0.035	0.006	0.121	0.201	208.840161	4.952888	1894.56	-561.31
4	GUIDE	used	40899552	9.56	22836	-0.186	-0.075	0.134	0.212	209.487899	4.571675	1573.57	2118.19
5	GUIDE	used	41288448	8.99	22984	-0.060	-0.047	0.098	0.154	209.600172	5.602451	-1617.20	181.82
6	GUIDE	used	41290640	9.06	23008	0.190	-0.097	0.097	0.153	209.347570	5.240269	-32.19	255.81
7	GUIDE	used	41288400	9.50	23000	0.094	0.208	0.108	0.173	209.280957	6.074786	-2273.43	-1758.84

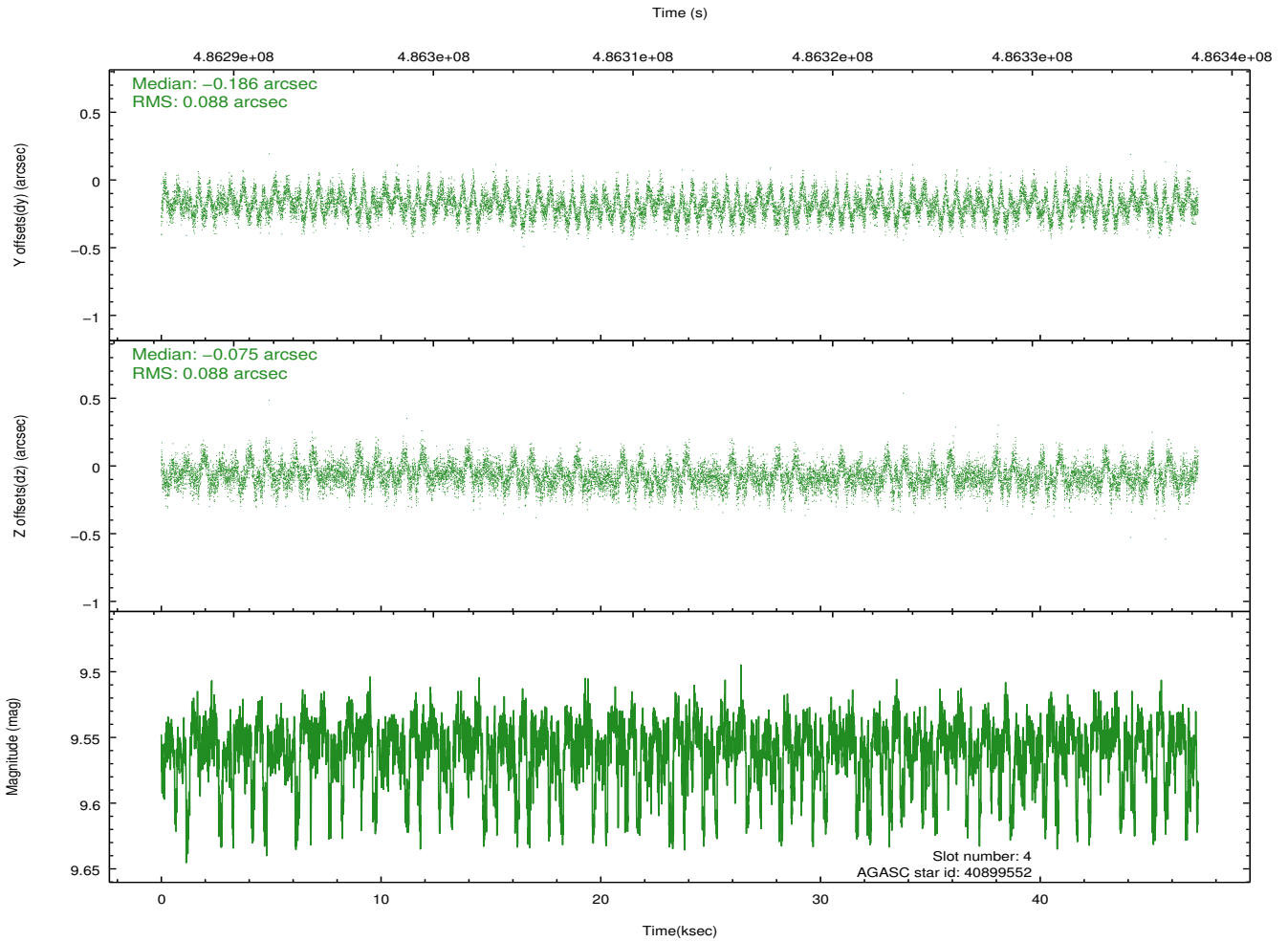
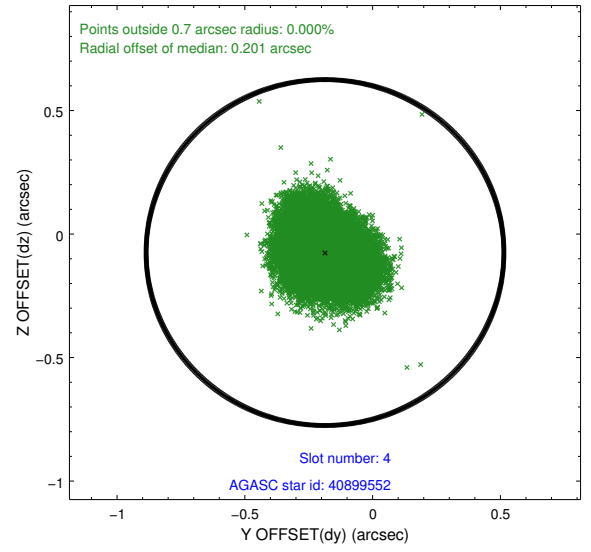
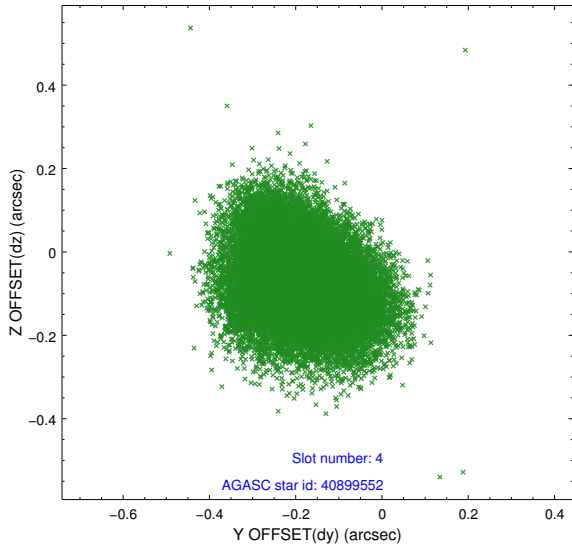
∞

2.4 Star Slots

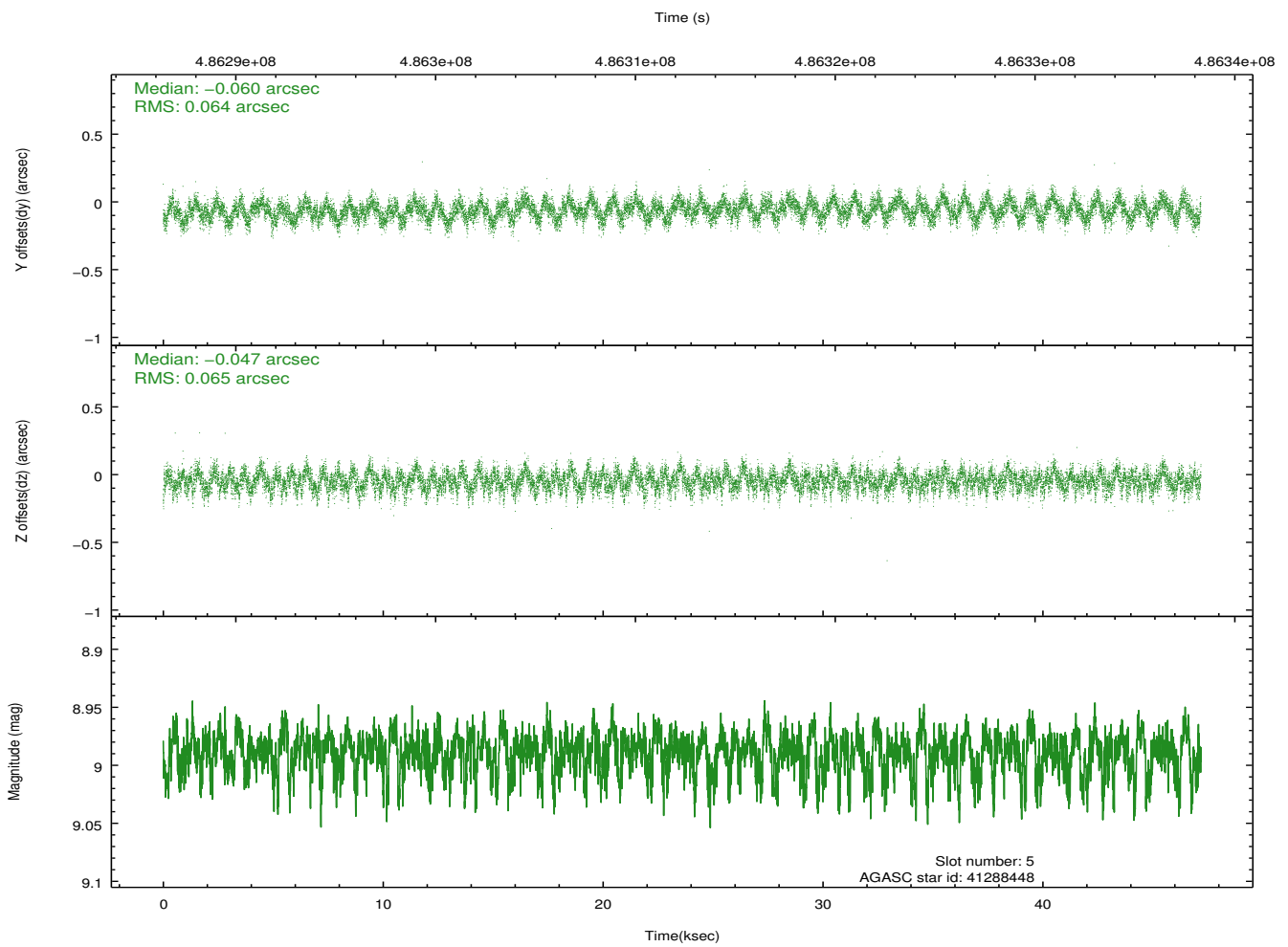
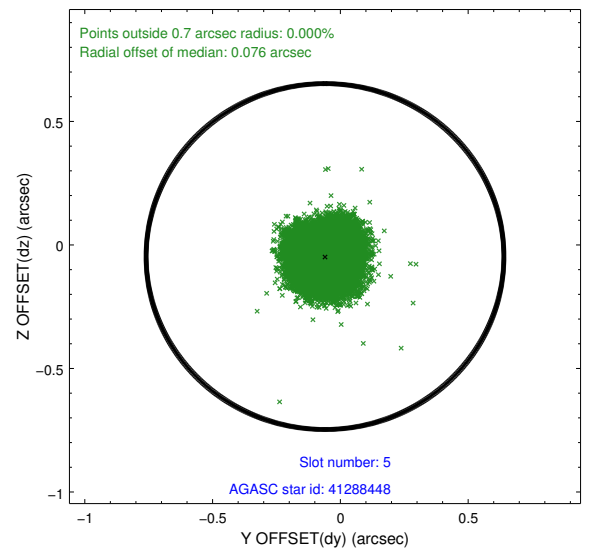
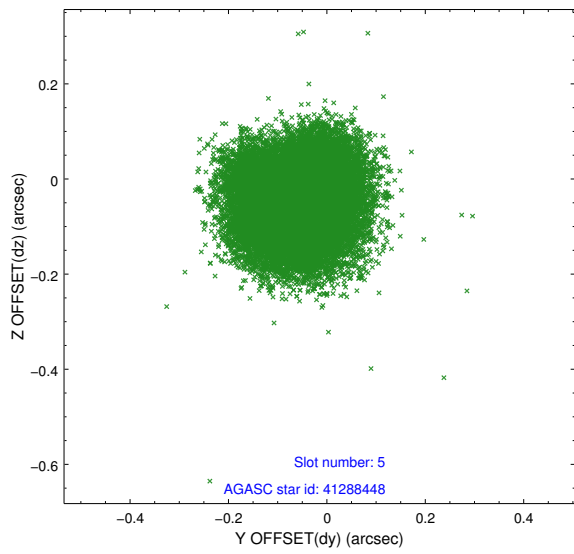
2.4.1 Slot 3



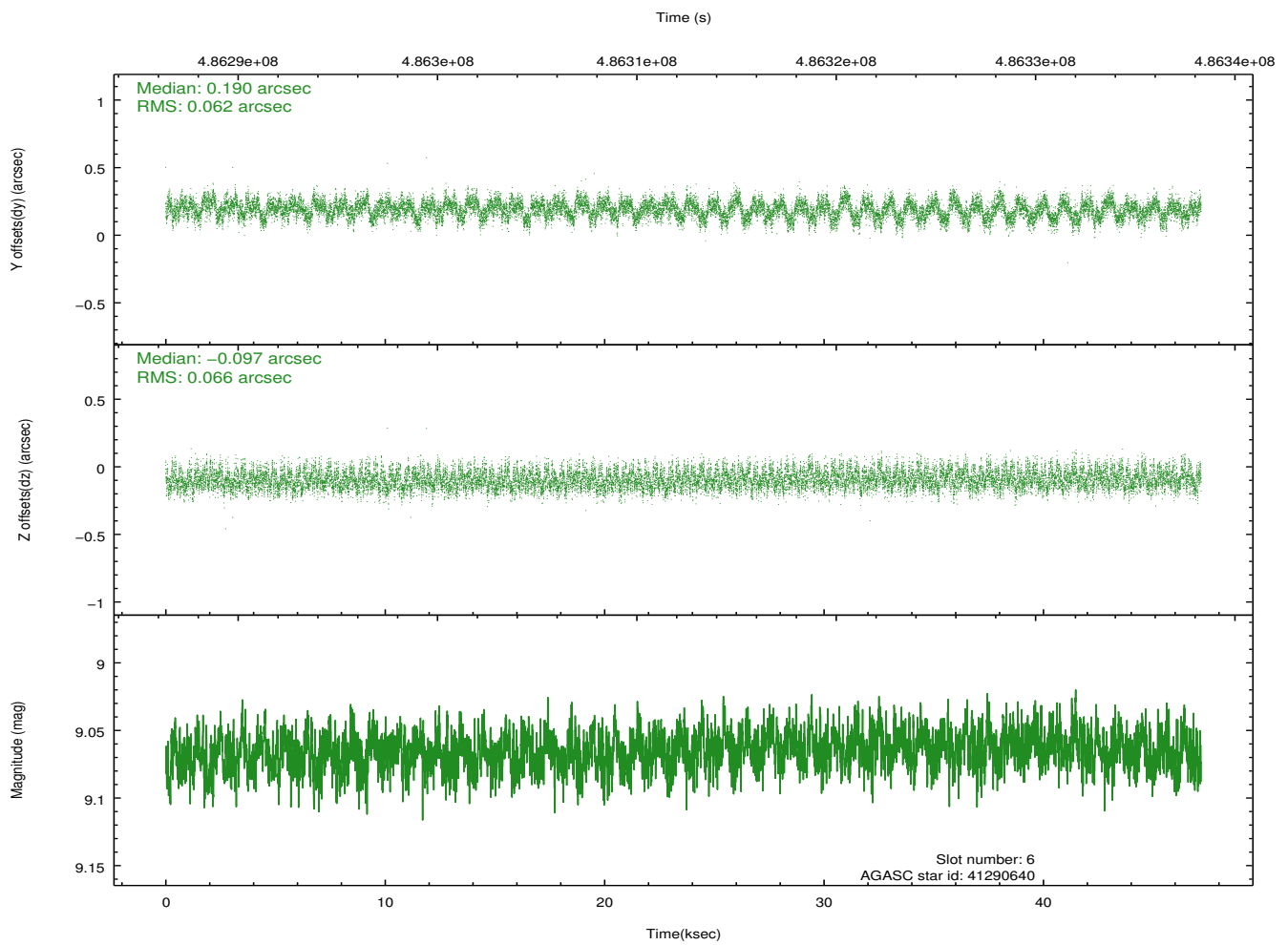
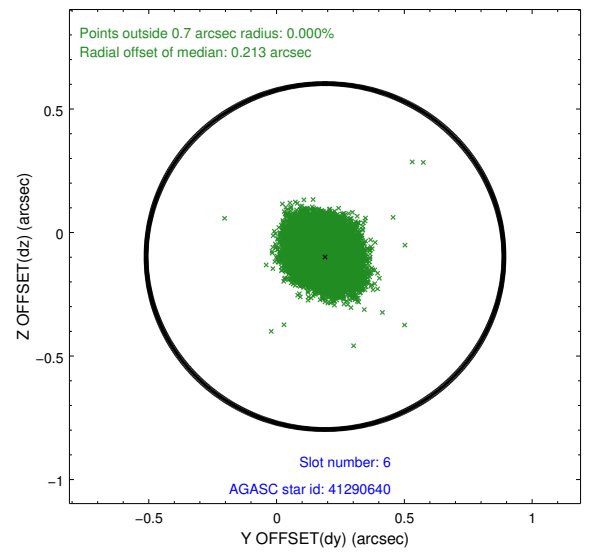
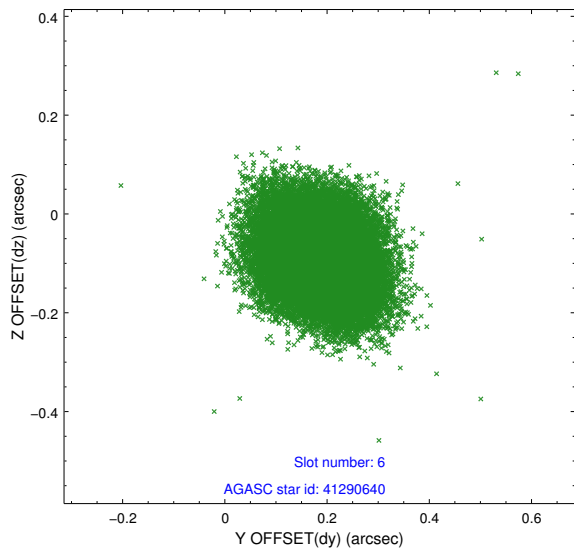
2.4.2 Slot 4



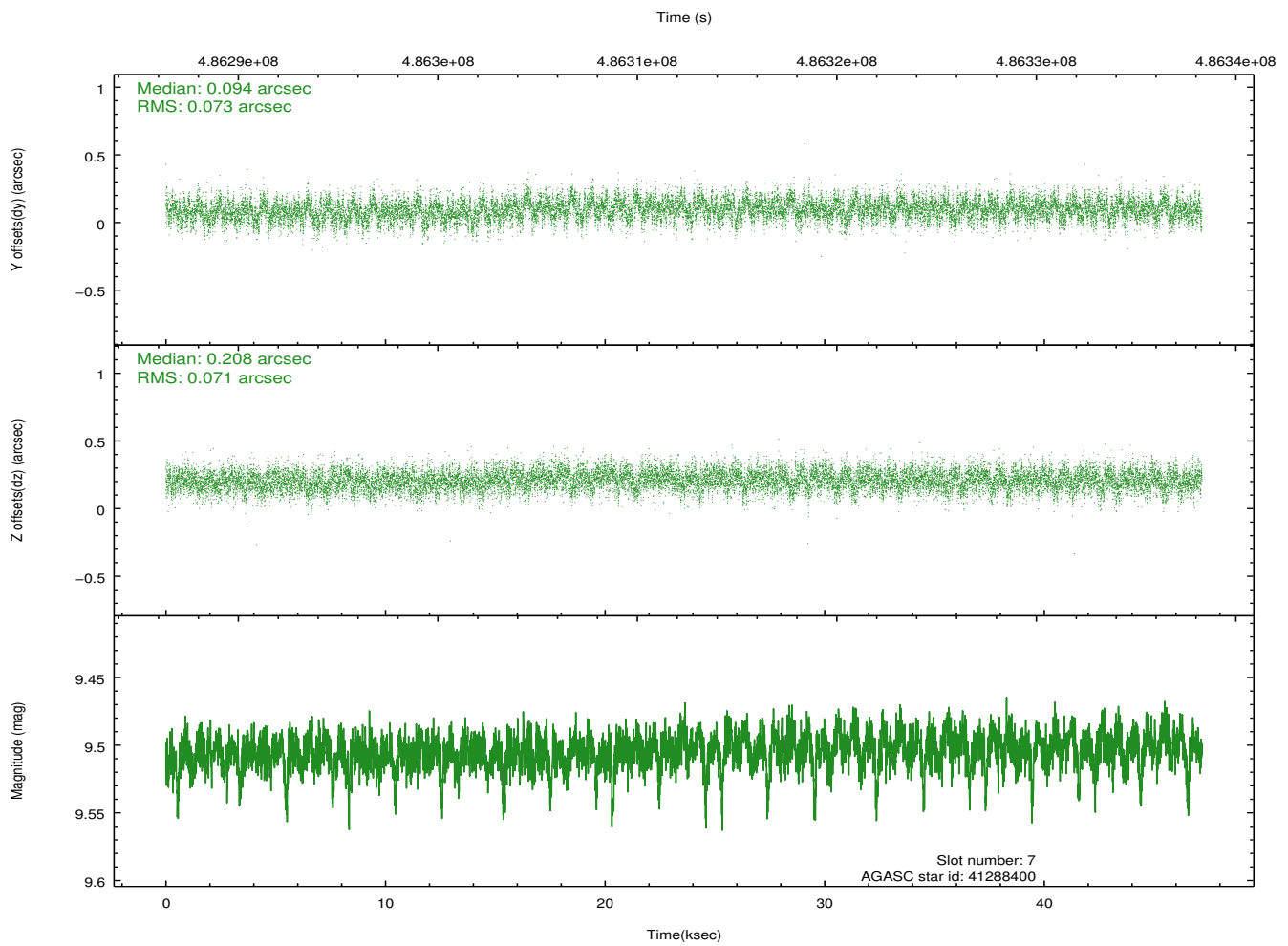
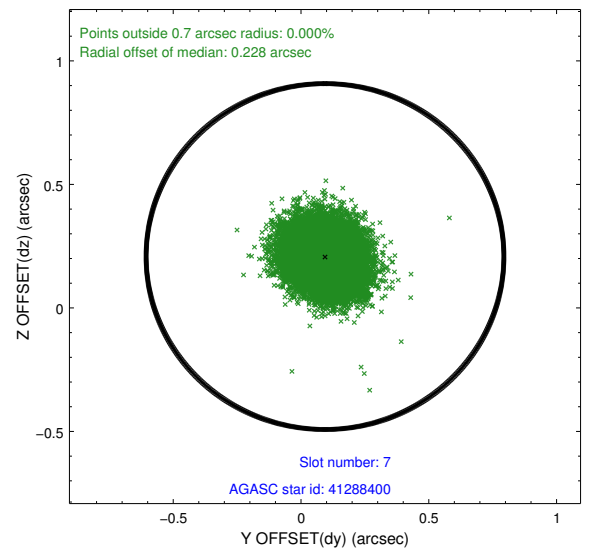
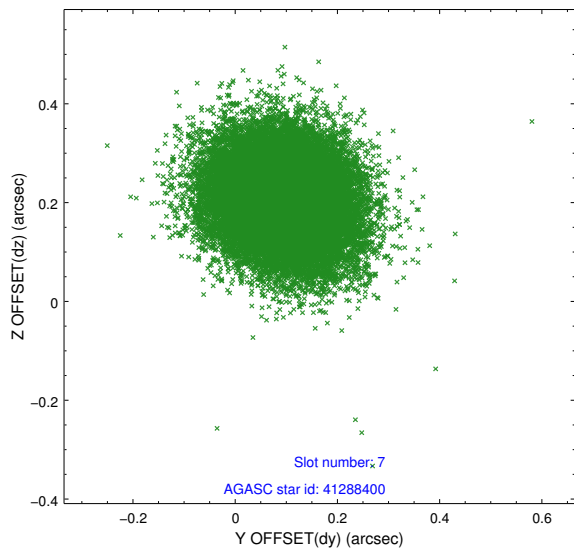
2.4.3 Slot 5



2.4.4 Slot 6

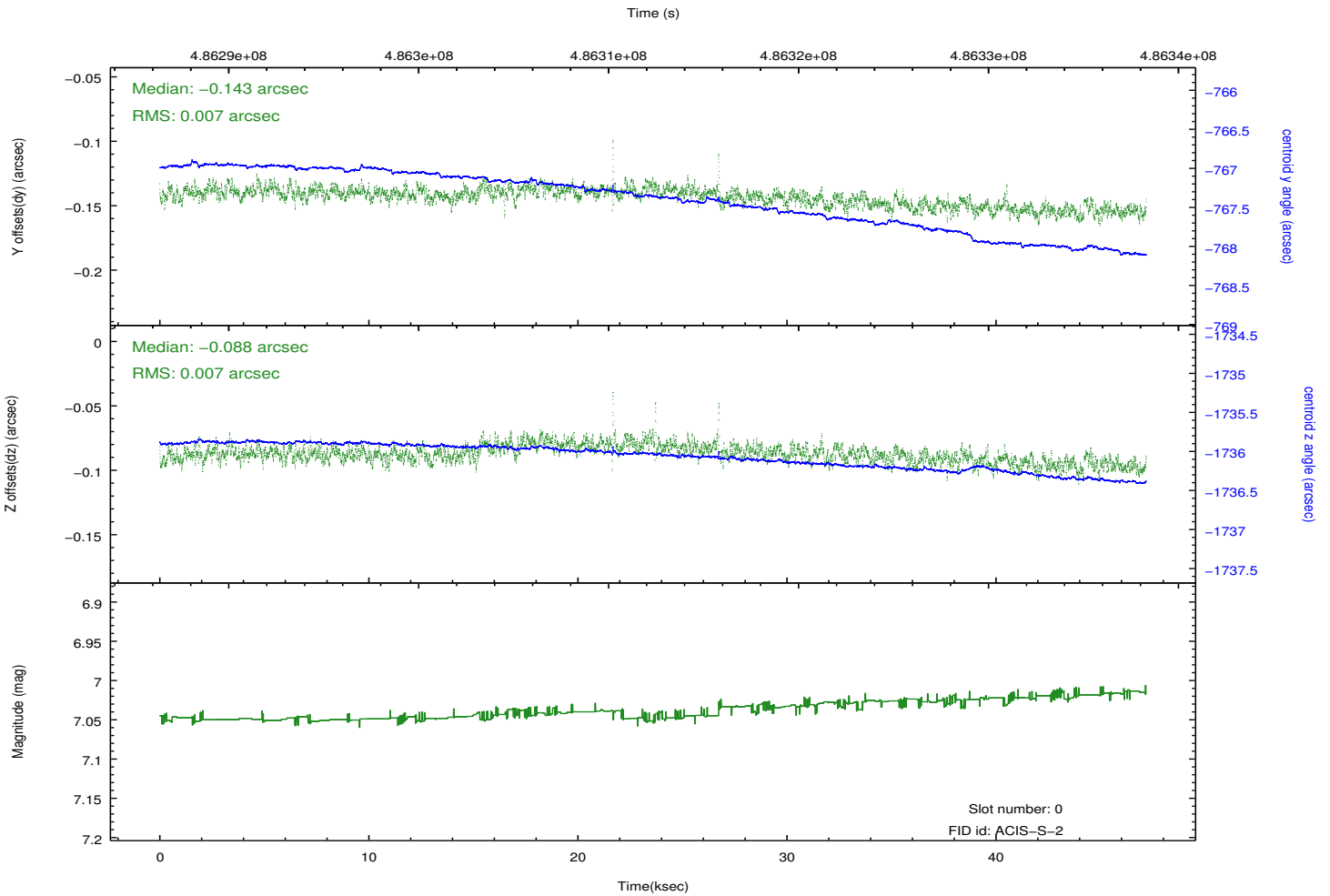
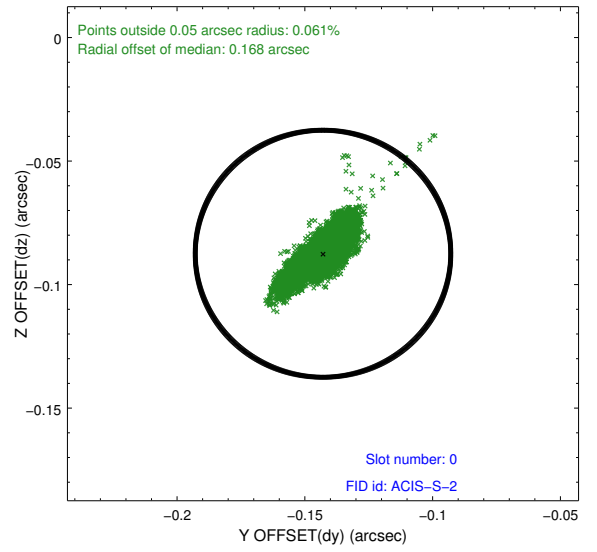
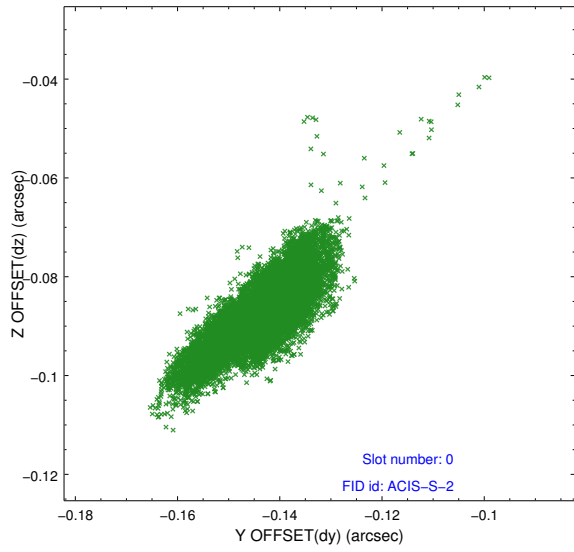


2.4.5 Slot 7

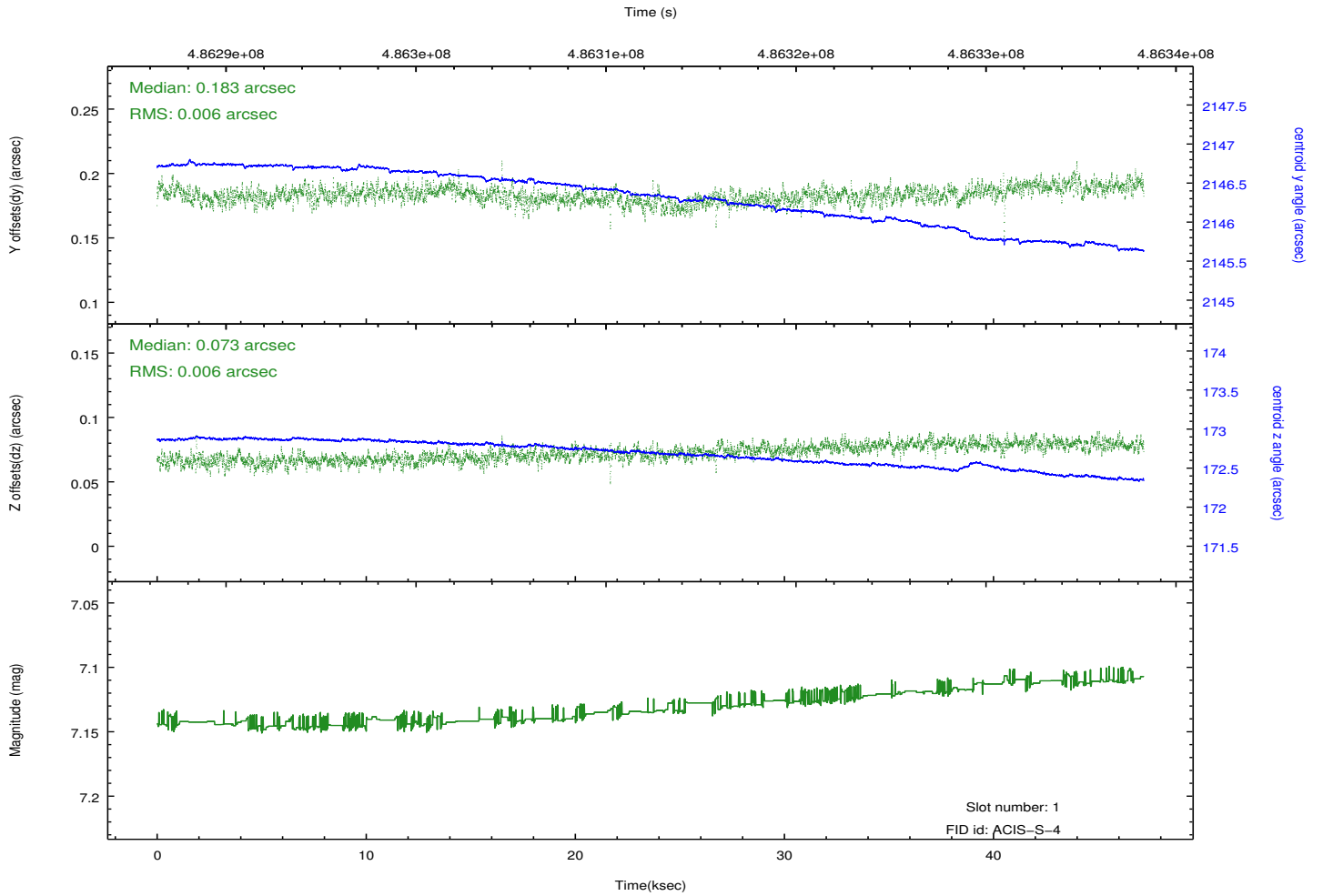
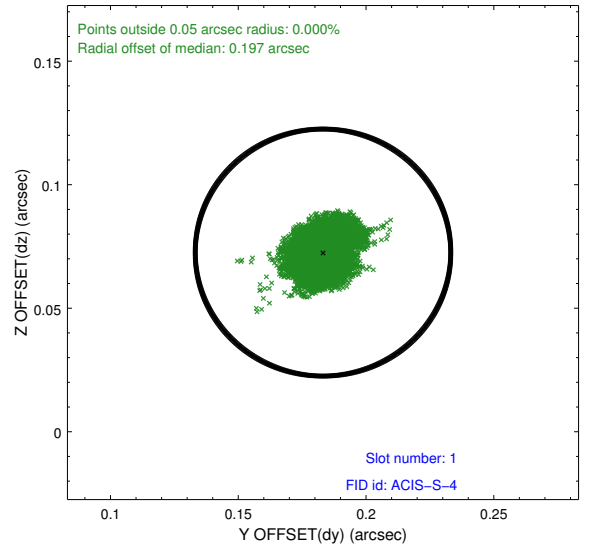
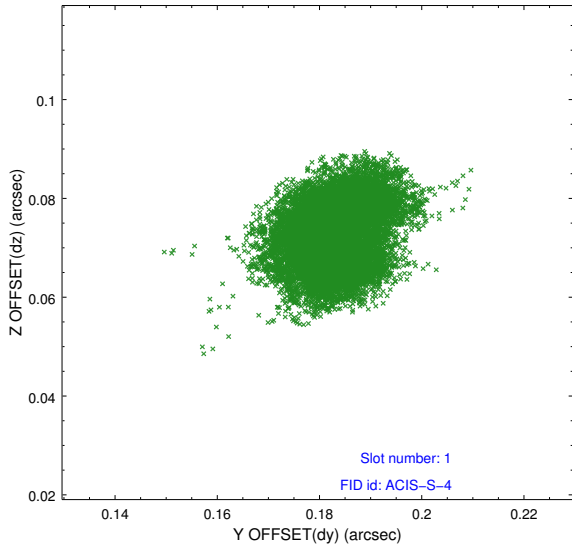


2.5 FID Slots

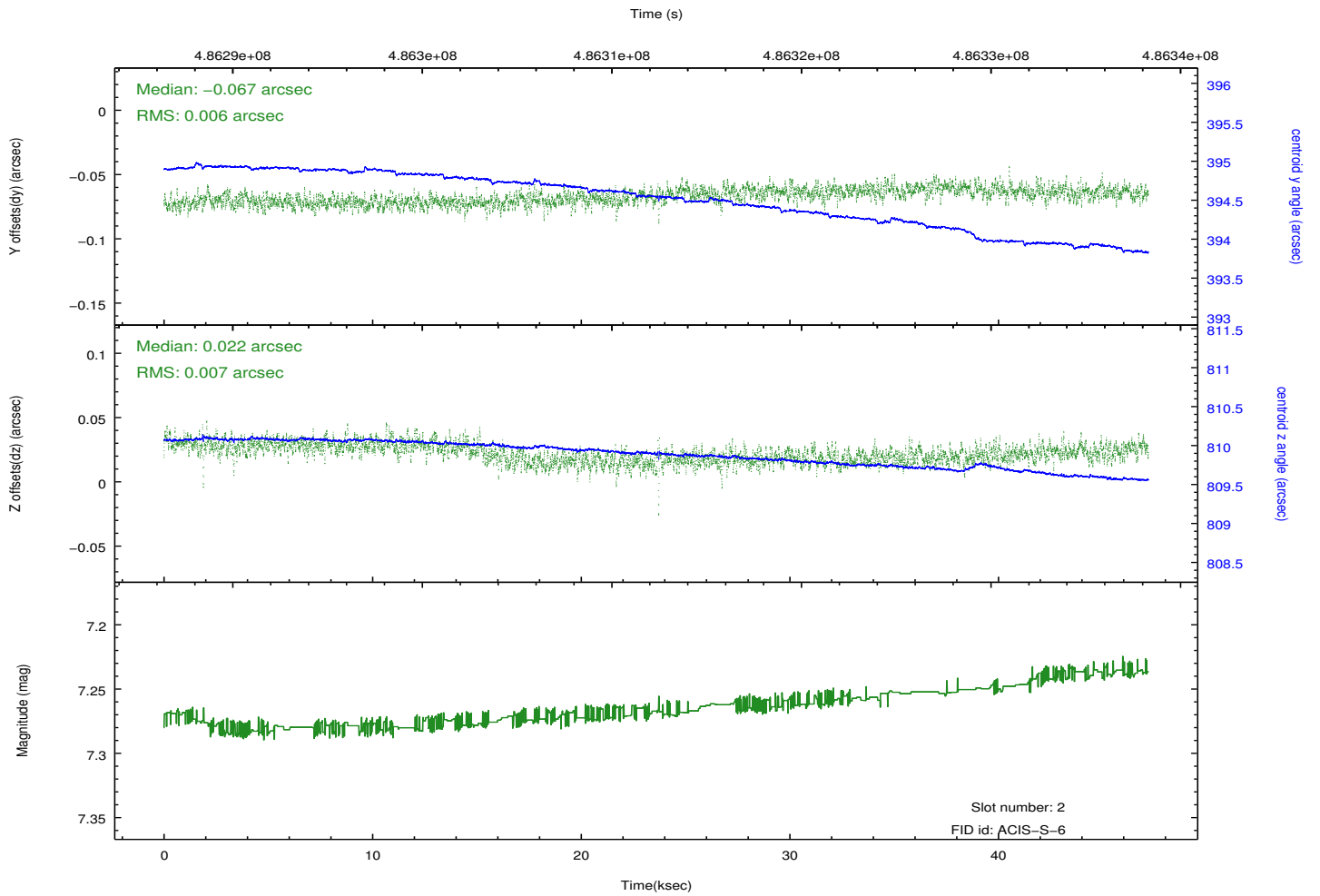
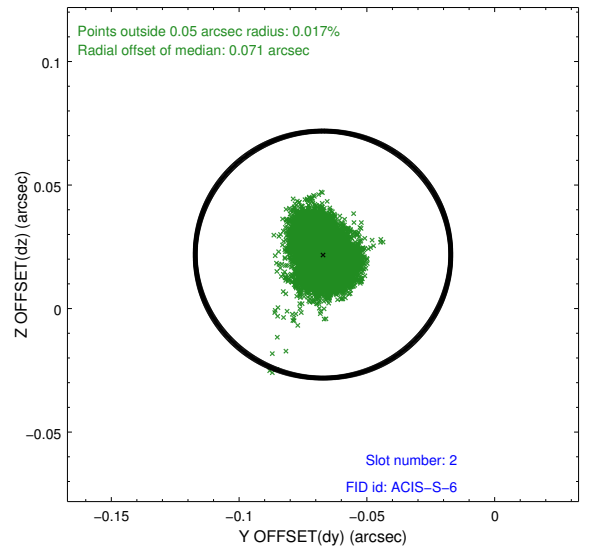
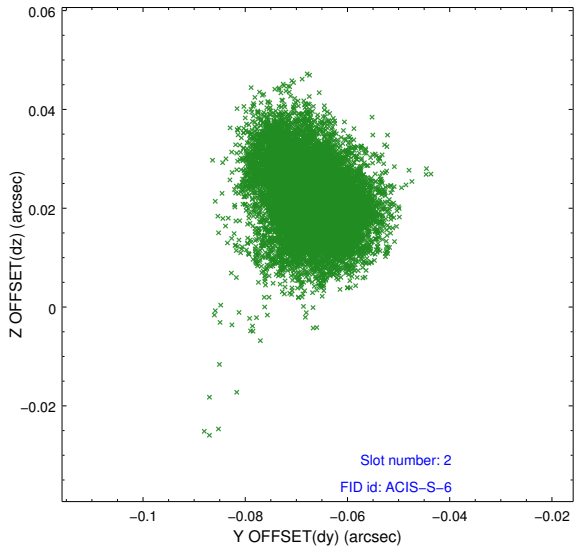
2.5.1 Slot 0



2.5.2 Slot 1



2.5.3 Slot 2



A Summary

A.1 Status

V&V Scientist	Beth Sundheim
V&V Date (YYYY-MM-DD)	2014.12.10
V&V Edition	1
V&V Disposition and Status	OK
V&V Charge Time	47.116900362372

A.2 Comments

These data have been reprocessed with new aspect alignment calibration files that correct small mean offsets (up to 0.4 arcsecs) and improve overall astrometric accuracy. The new calibration was determined using data from the time period being reprocessed and was performed using cross-correlation of X-ray sources with radio and optical counterparts.