

V&V Reference Report

L2 ASCDS Version : 8.4.5

Observation 1522 - L2 Version 4
Chandra X-Ray Center

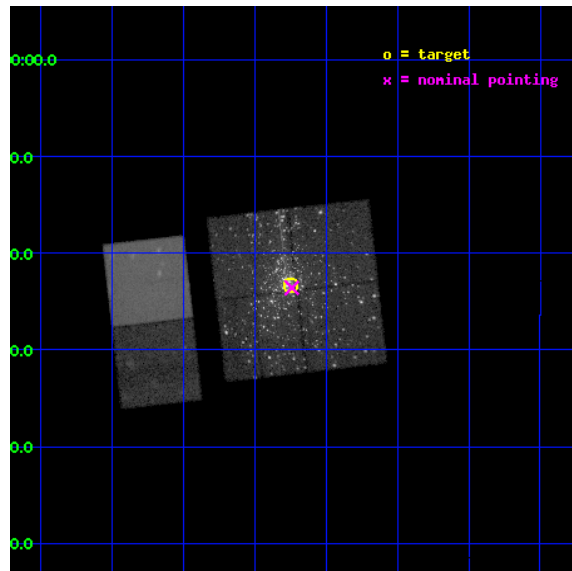
L2 Processing Date : Aug 25 2012

Contents

1	Front	2
2	OBI	3
2.1	OBI	3
2.1.1	Images	3
2.1.2	Bias	3
2.1.3	Parameters	4
2.1.4	Events	4
2.2	Compared Parameters	5
2.3	Aspect	6
2.4	Star Slots	9
2.4.1	Slot 3	9
2.4.2	Slot 4	10
2.4.3	Slot 5	11
2.4.4	Slot 6	12
2.4.5	Slot 7	13
2.5	FID Slots	14
2.5.1	Slot 0	14
2.5.2	Slot 1	15
2.5.3	Slot 2	16
A	Summary	17
A.1	Status	17
A.2	Comments	17

1 Front

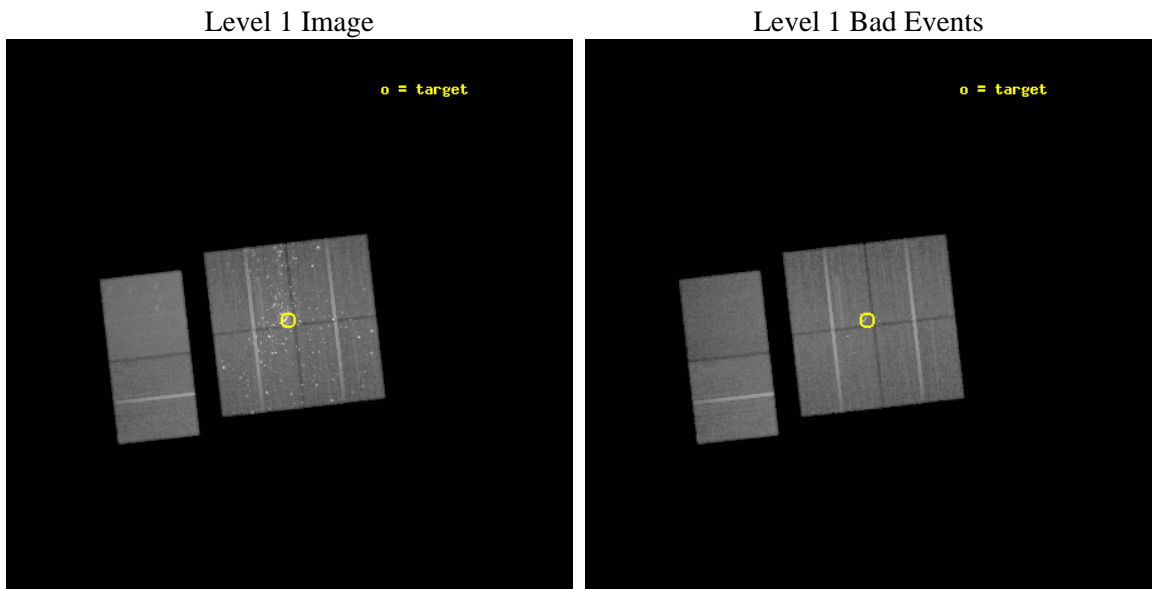
seq_num	200016	Sequence number
obs_id	1522	Observation id
title	YOUNG STARS IN THE ORION TRAPEZIUM CLUSTER	Proposal title
observer	Professor Gordon Garmire	Principal investigator
object	TRAPEZIUM CLUSTER	Source name
dtcycle	0	
cycle	P	events from which exps? Prim/Second/Both
ra_targ	83.8125	Observer's specified target RA [deg]
dec_targ	-5.388889	Observer's specified target Dec [deg]
ra_nom	83.810007850727	Nominal RA [deg]
dec_nom	-5.3932585182392	Nominal Dec [deg]
roll_nom	263.48505170585	Nominal Roll [deg]
revision	4	Processing version of data
ontime	38857.600036174	Sum of GTIs [s]
livetime	38365.561707278	Livetime [s]
ontime0	38857.600036174	Sum of GTIs [s]
ontime1	38857.600036174	Sum of GTIs [s]
ontime2	38857.600036174	Sum of GTIs [s]
ontime3	38857.600036174	Sum of GTIs [s]
ontime6	38857.600036174	Sum of GTIs [s]
ontime7	38857.600036174	Sum of GTIs [s]
l2events	557623	Number of level 2 events



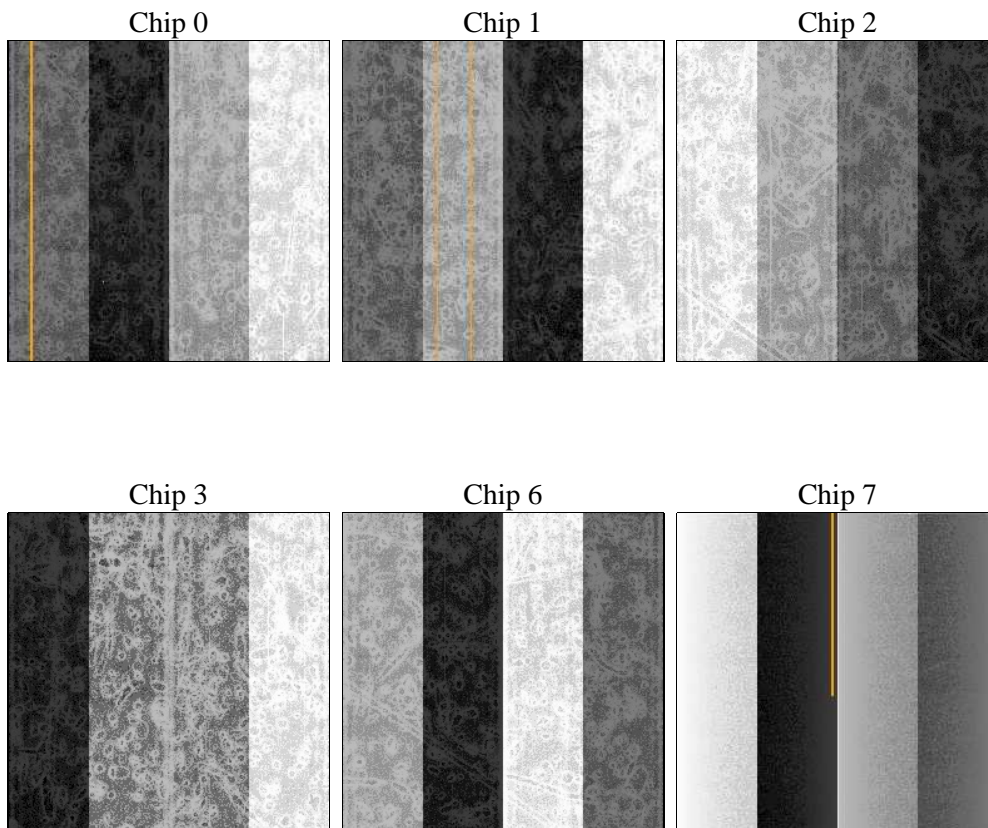
2 OBI

2.1 OBI

2.1.1 Images



2.1.2 Bias



2.1.3 Parameters

obi_num	2	Obi number	sched_exp_time	38499.824000	[s] Scheduled observation exposure time
ascdsver	8.4.5	Processing system revision	ontime	38857.600036174	Sum of GTIs [s]
caldbver	4.5.1.1	 	ontime0	38857.600036174	Sum of GTIs [s]
date	2012-08-25T03:43:04	Date and time of file creation	ontime1	38857.600036174	Sum of GTIs [s]
revision	4	Processing version of data	ontime2	38857.600036174	Sum of GTIs [s]
			ontime3	38857.600036174	Sum of GTIs [s]
			ontime6	38857.600036174	Sum of GTIs [s]
			ontime7	38857.600036174	Sum of GTIs [s]
			l1events	2039547	Number of level 1 events

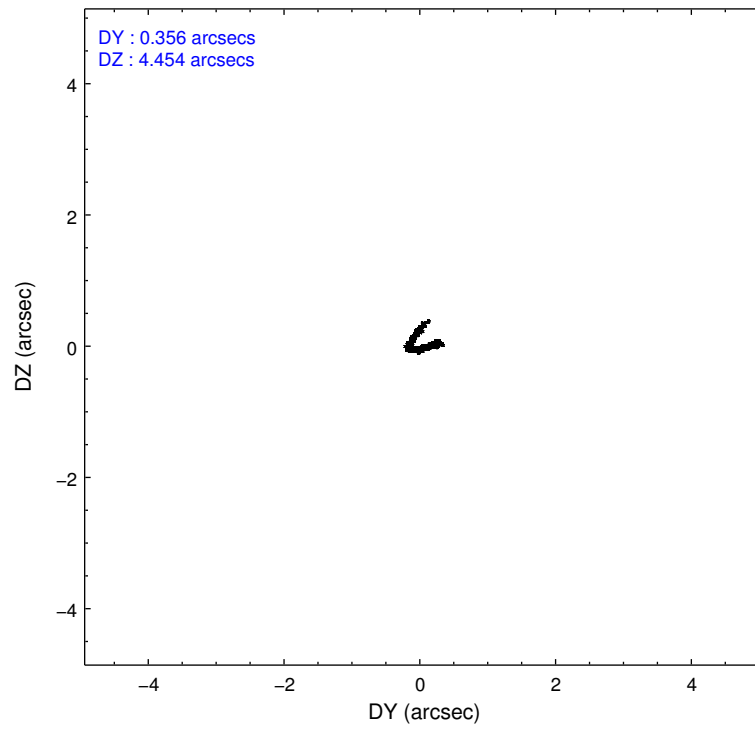
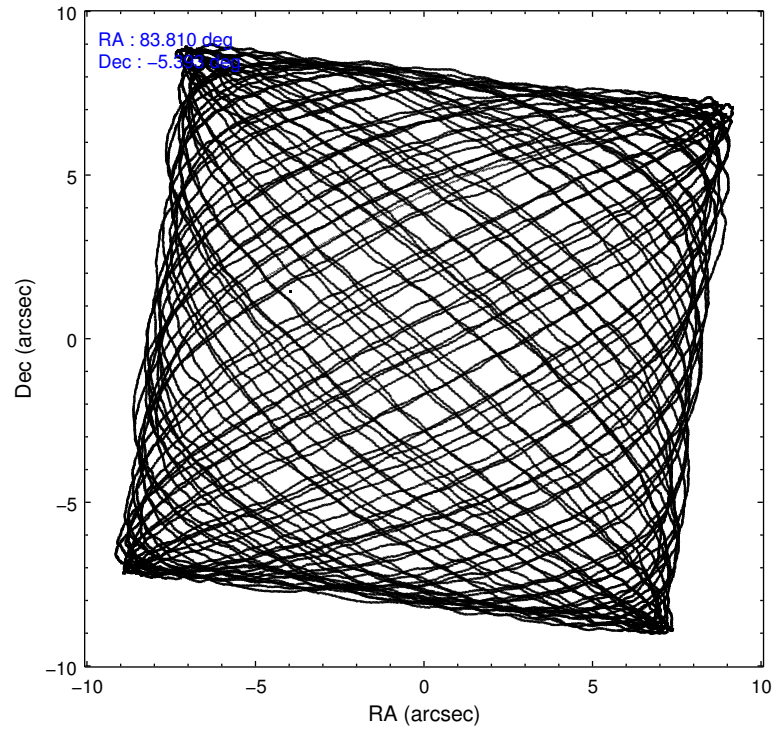
2.1.4 Events

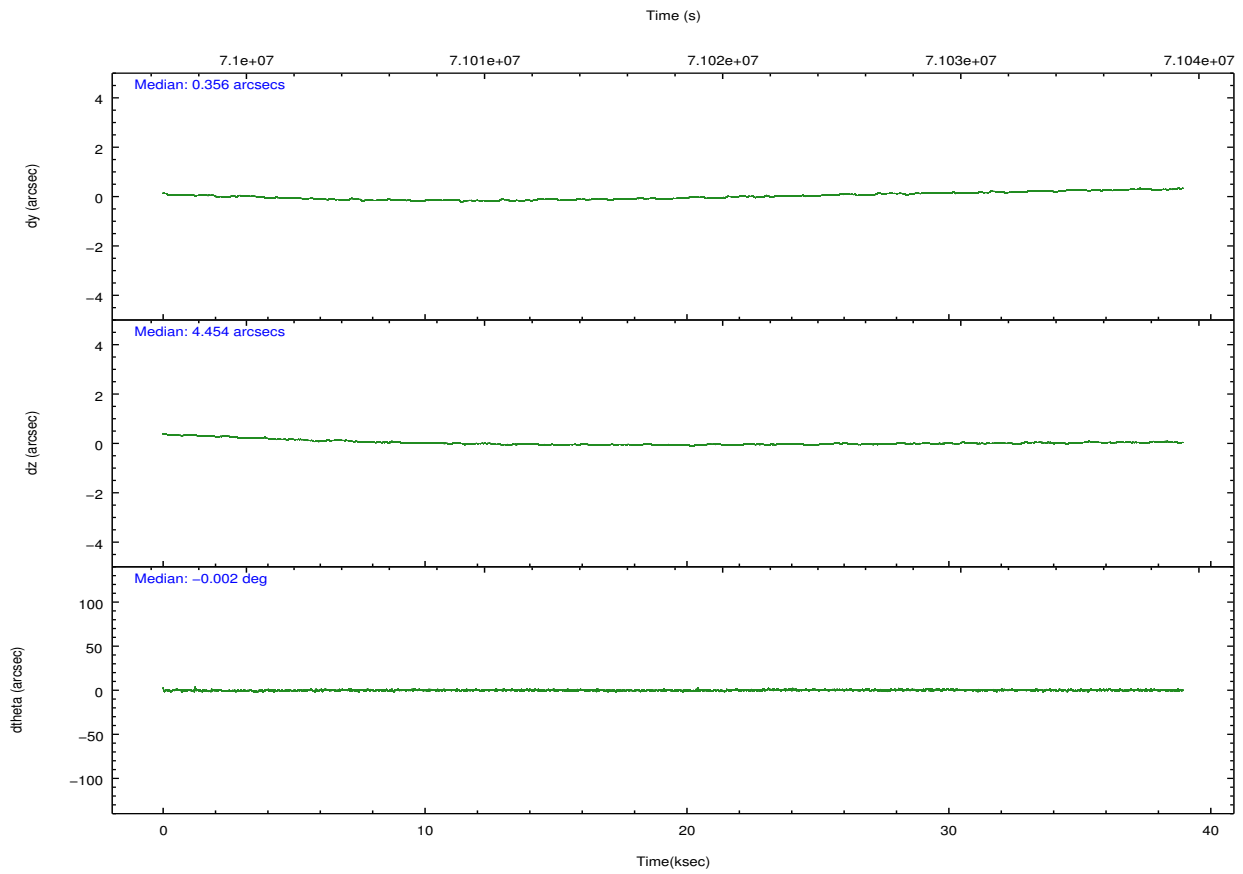
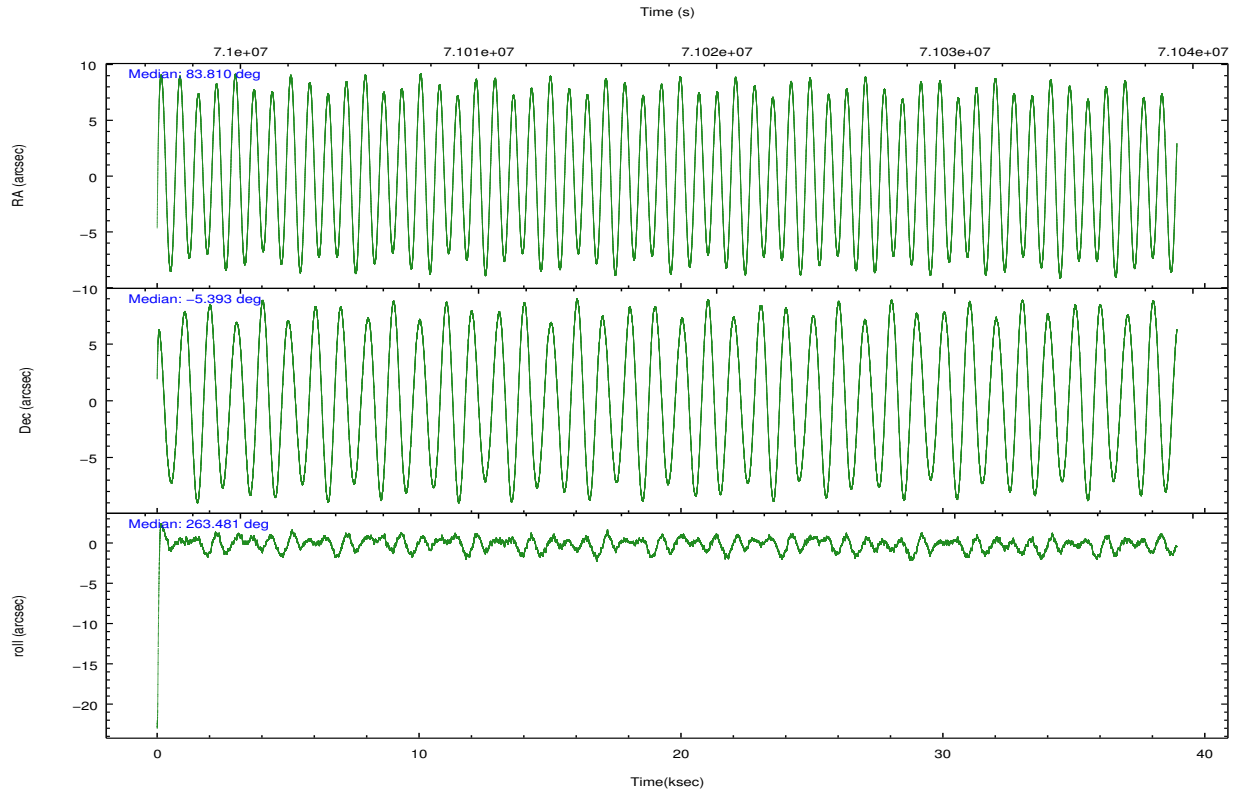
	ccd 0	ccd 1	ccd 2	ccd 3	ccd 6	ccd 7		ccd 0	ccd 1	ccd 2	ccd 3	ccd 6	ccd 7
level 1 events	297778	305645	366324	429872	296344	343584	grade 0 events	42146	47113	73810	117278	13200	17449
rejected events	232632	231574	261272	264791	265291	185904		14%	15%	20%	27%	4%	5%
rejected %	78%	75%	71%	61%	89%	54%	grade 1 events	324	645	1888	4393	152	331
								0%	0%	0%	1%	0%	0%
							grade 2 events	9428	10522	13938	21354	6002	31235
								3%	3%	3%	4%	2%	9%
							grade 3 events	4012	4920	5206	8096	3135	14808
								1%	1%	1%	1%	1%	4%
							grade 4 events	3895	4707	5273	7888	3141	14566
								1%	1%	1%	1%	1%	4%
							grade 5 events	8800	9731	9441	12626	10652	31074
								2%	3%	2%	2%	3%	9%
							grade 6 events	5676	6820	6841	10494	5579	79650
								1%	2%	1%	2%	1%	23%
							grade 7 events	223497	221187	249927	247743	254483	154471
								75%	72%	68%	57%	85%	44%

2.2 Compared Parameters

Parameter	Planned	Actual	Parameter	Planned	Actual
Instrument	ACIS	ACIS	Obspar format version number	7	7
Detector	ACIS-012367	ACIS-012367	Obspar file type	PREDICTED	ACTUAL
Grating	NONE	NONE	Obspar update status	NONE	UPDATED
Data mode	FAINT	FAINT	Number of optional ACIS chips dropped	0	0
Observation mode	POINTING	POINTING	On-chip summing requested	N	N
[deg] Pointing RA	83.799144	83.81000785072712	Subarray requested	NONE	NONE
[deg] Pointing Dec	-5.367856	-5.393258518239151	Alternating exposures requested	N	N
[deg] Pointing Roll	263.275348	263.4850517058466	[s] Primary exposure time	0.000000	3.2
[mm] SIM focus pos	-0.782348	-0.7809083437167272			
[mm] SIM defocus	0	0.001439871863259334			
[mm] SIM translation stage pos	-233.592463	-233.5874344608287			
[mm] SIM translation stage offset	0	-0.005018542100998502			
[s] Observation start time (MET)	70998889.184000	70997579.103126			
Observation start date	2000-04-01T17:53:45	2000-04-01T17:32:59			
[s] Observation end time (MET)	71037389.184000	71037698.117094			
Observation end date	2000-04-02T04:35:25	2000-04-02T04:41:38			
Read mode	TIMED	TIMED			

2.3 Aspect



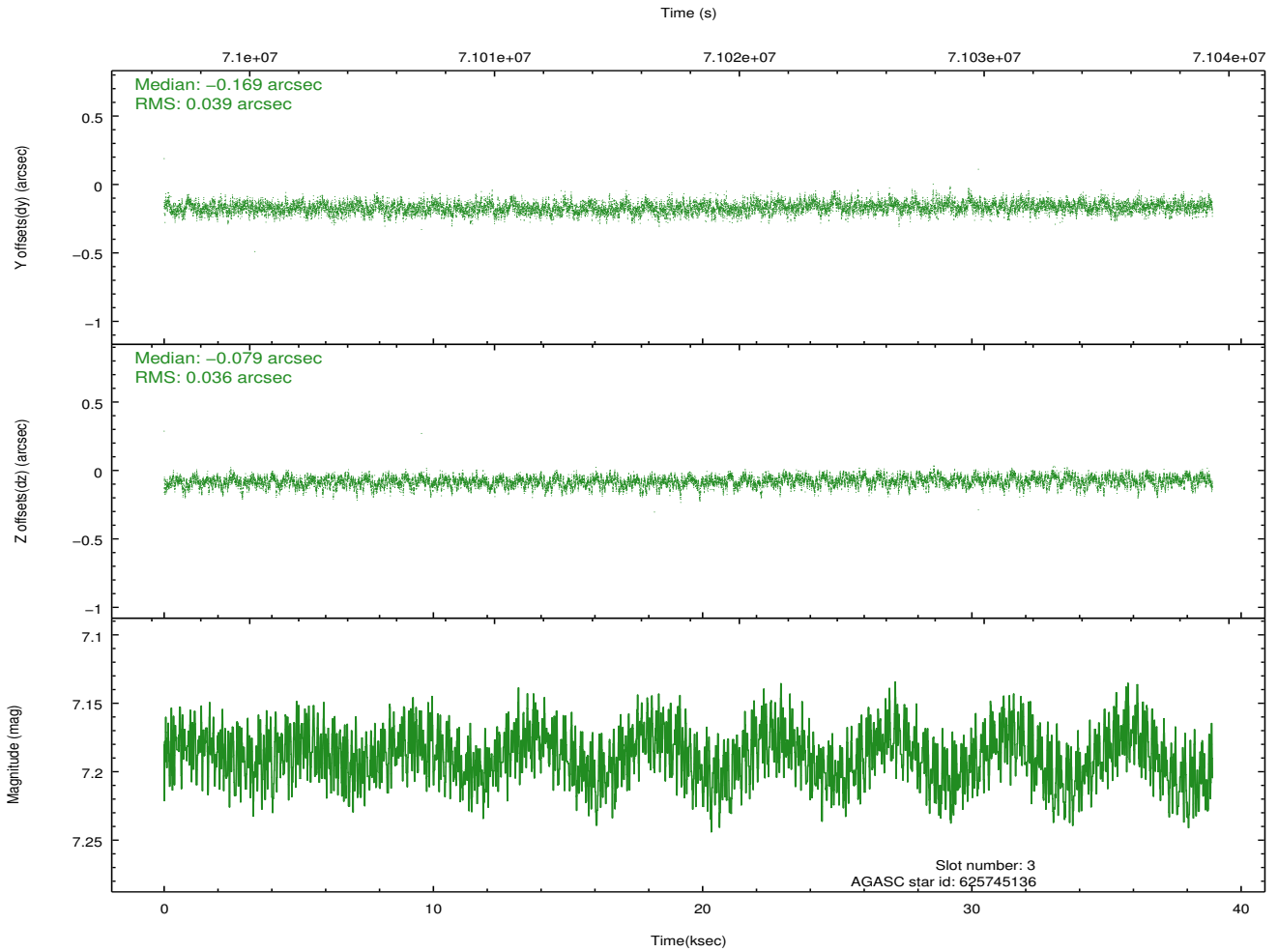
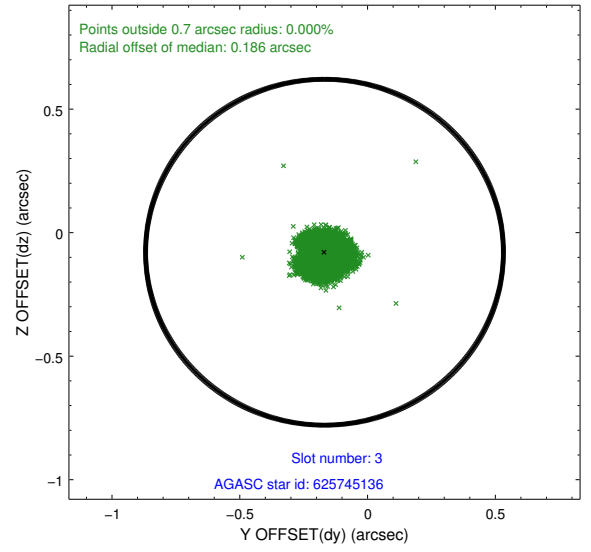
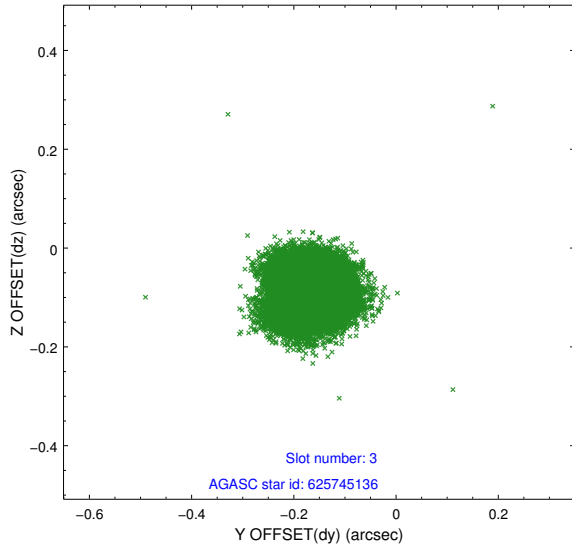


Slot Statistics

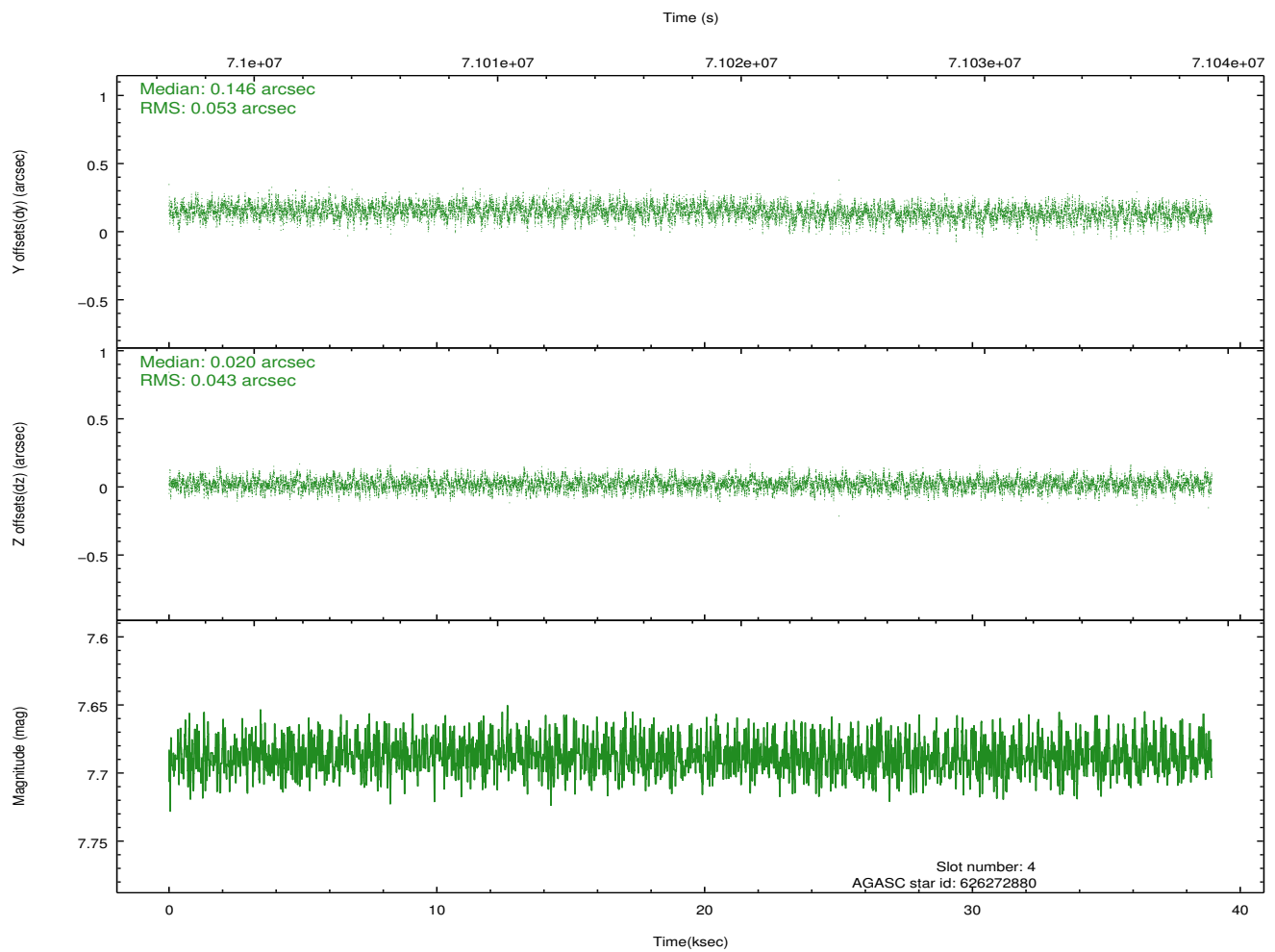
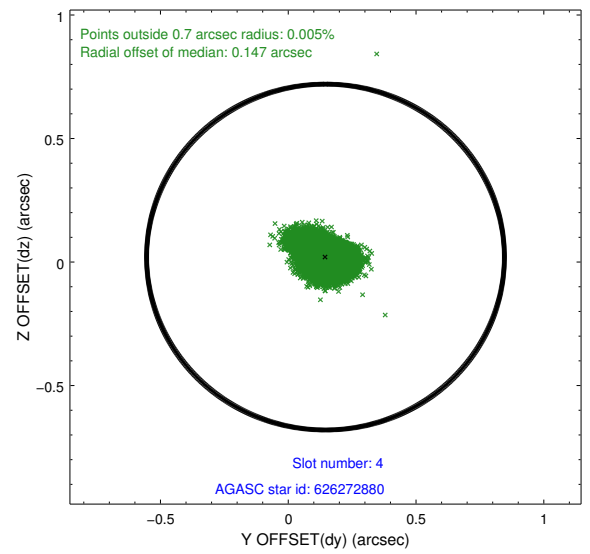
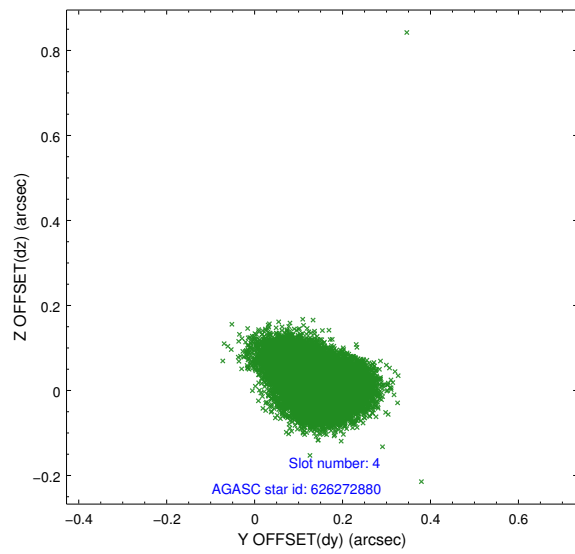
slot	status	id	mag	n_pts	med_dy	med_dz	dr1	dr2	ra	dec	mean_y	mean_z
0	FID	ACIS-I-2	7.15	9496	-0.039	-0.030	0.014	0.021	0.000000	0.000000	-754.72	-834.20
1	FID	ACIS-I-4	7.20	9493	-0.006	0.039	0.022	0.031	0.000000	0.000000	2159.36	1072.02
2	FID	ACIS-I-5	7.23	9494	-0.053	0.060	0.015	0.023	0.000000	0.000000	-1808.53	1069.92
3	GUIDE	625745136	7.19	18989	-0.169	-0.079	0.056	0.093	83.600341	-4.804339	-1930.65	-945.77
4	GUIDE	626272880	7.69	18990	0.146	0.020	0.072	0.118	83.815609	-6.032748	2370.82	339.25
5	GUIDE	625740992	9.09	18978	-0.085	-0.174	0.099	0.158	83.193672	-4.960928	-1198.85	-2328.01
6	GUIDE	625869904	9.99	18908	-0.041	0.068	0.121	0.200	84.416435	-5.090874	-1248.09	2081.83
7	GUIDE	626270568	8.91	18980	0.141	0.163	0.073	0.119	84.121775	-5.770142	1303.82	1317.92

2.4 Star Slots

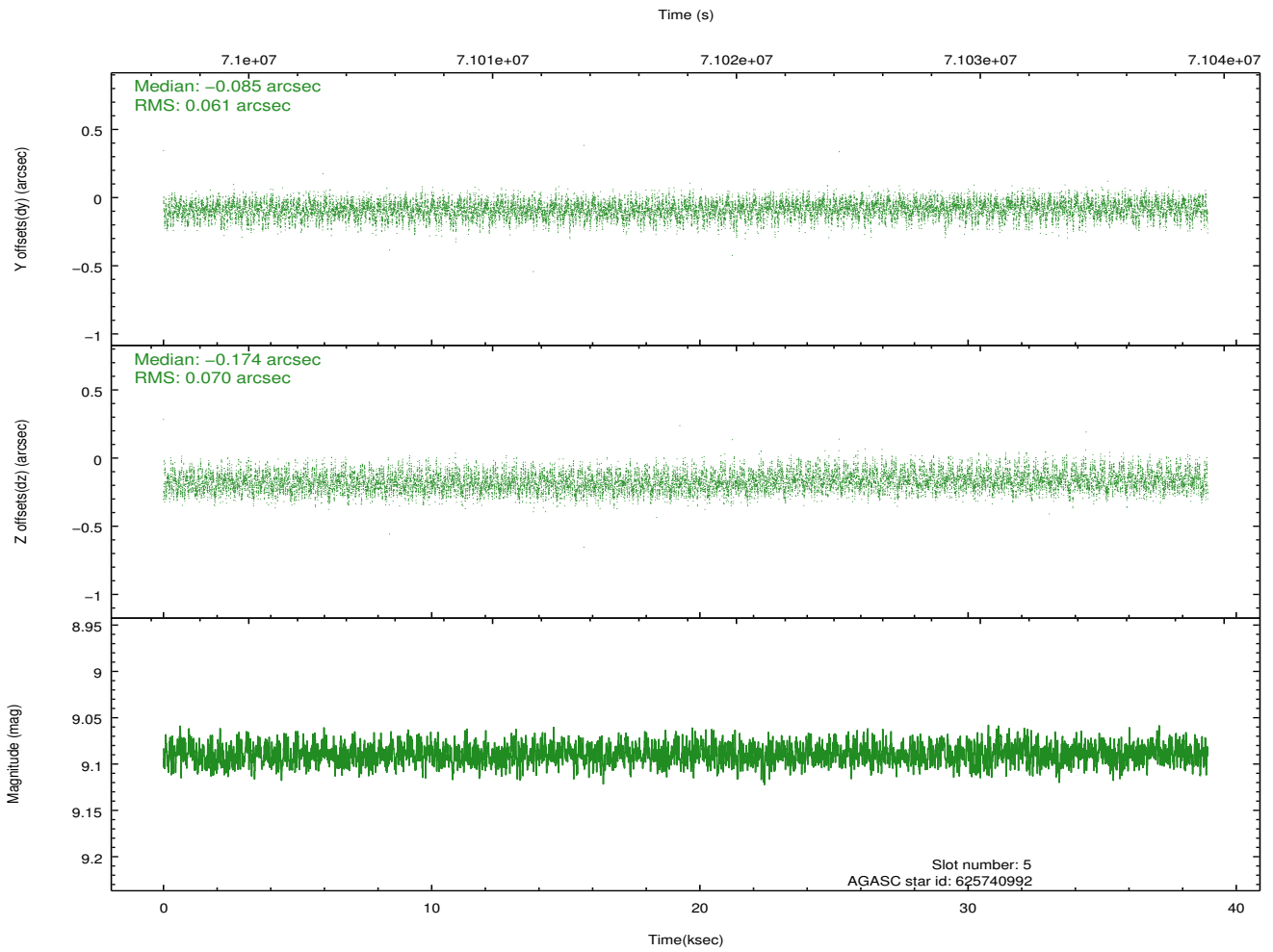
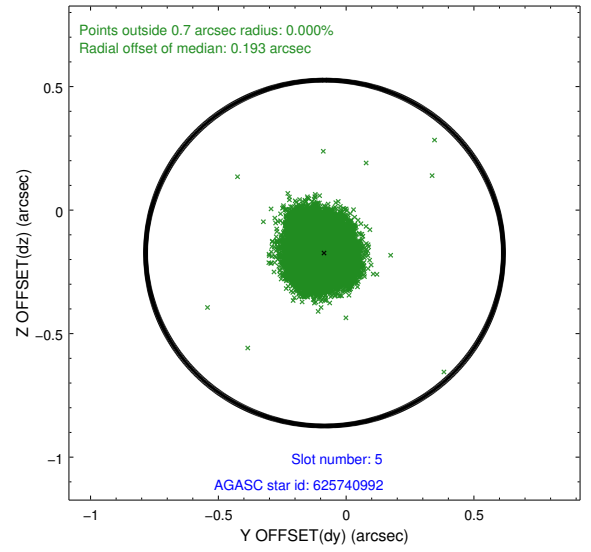
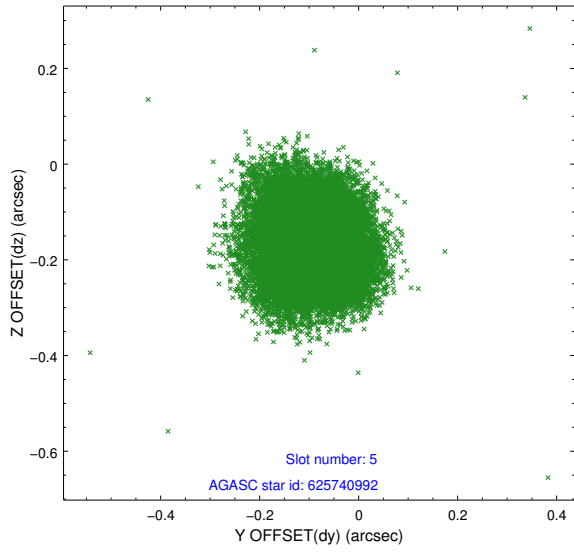
2.4.1 Slot 3



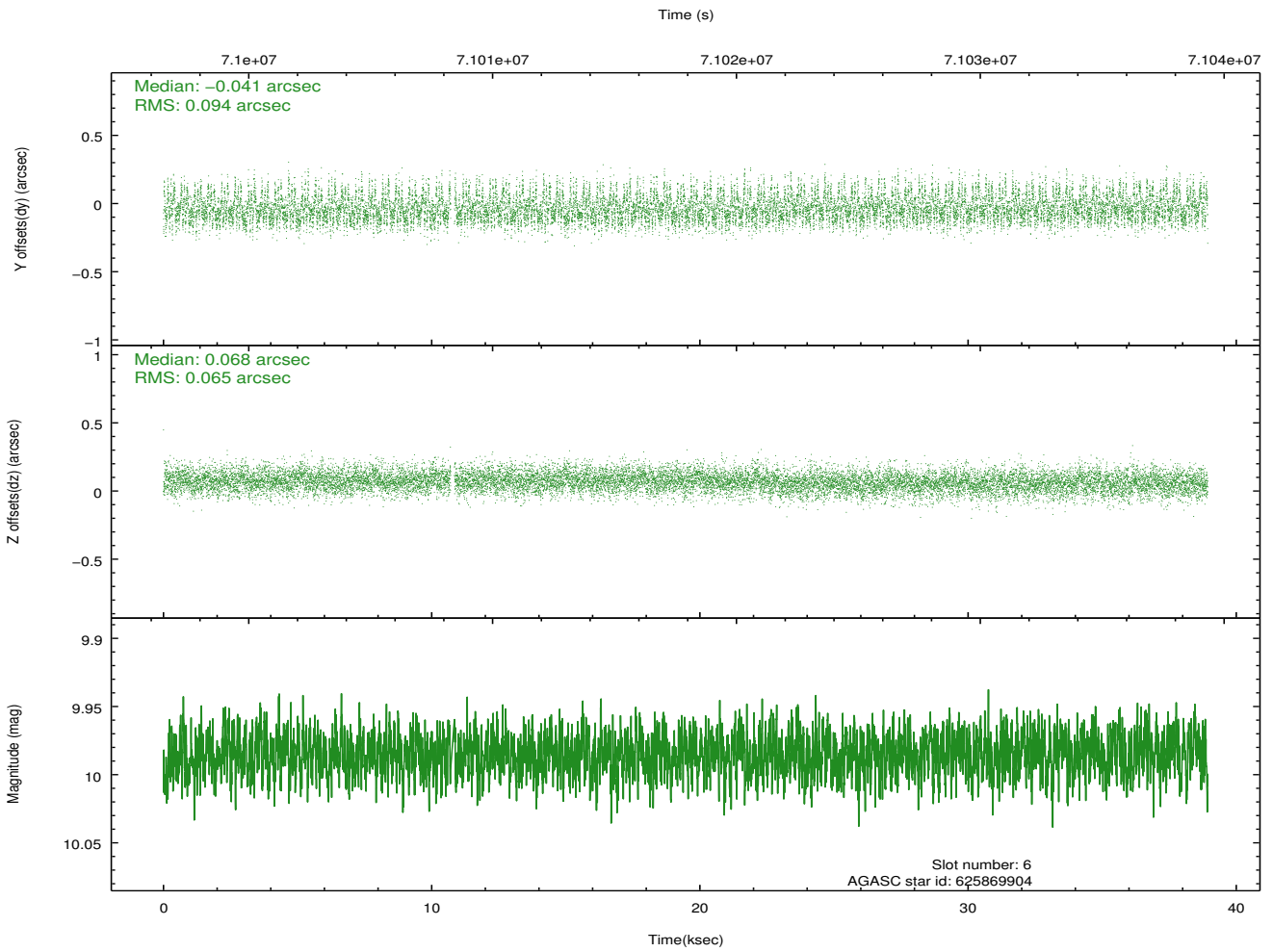
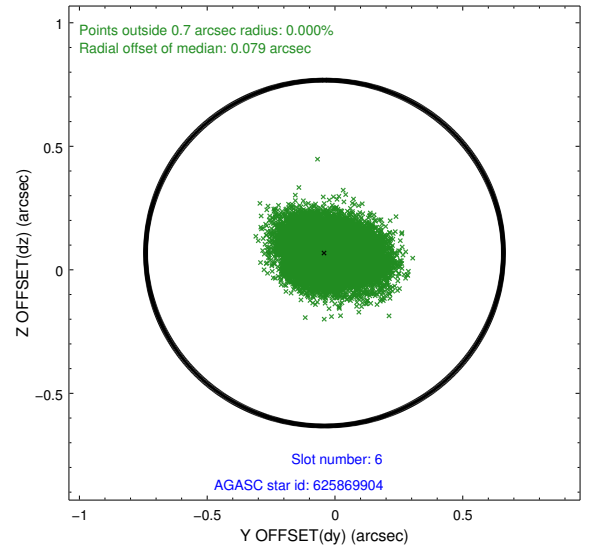
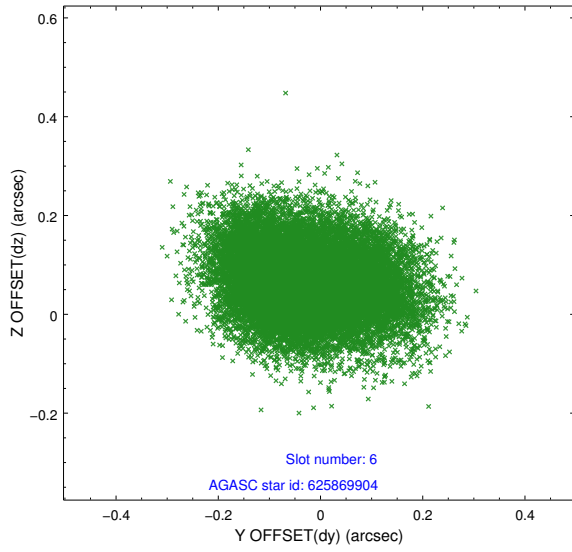
2.4.2 Slot 4



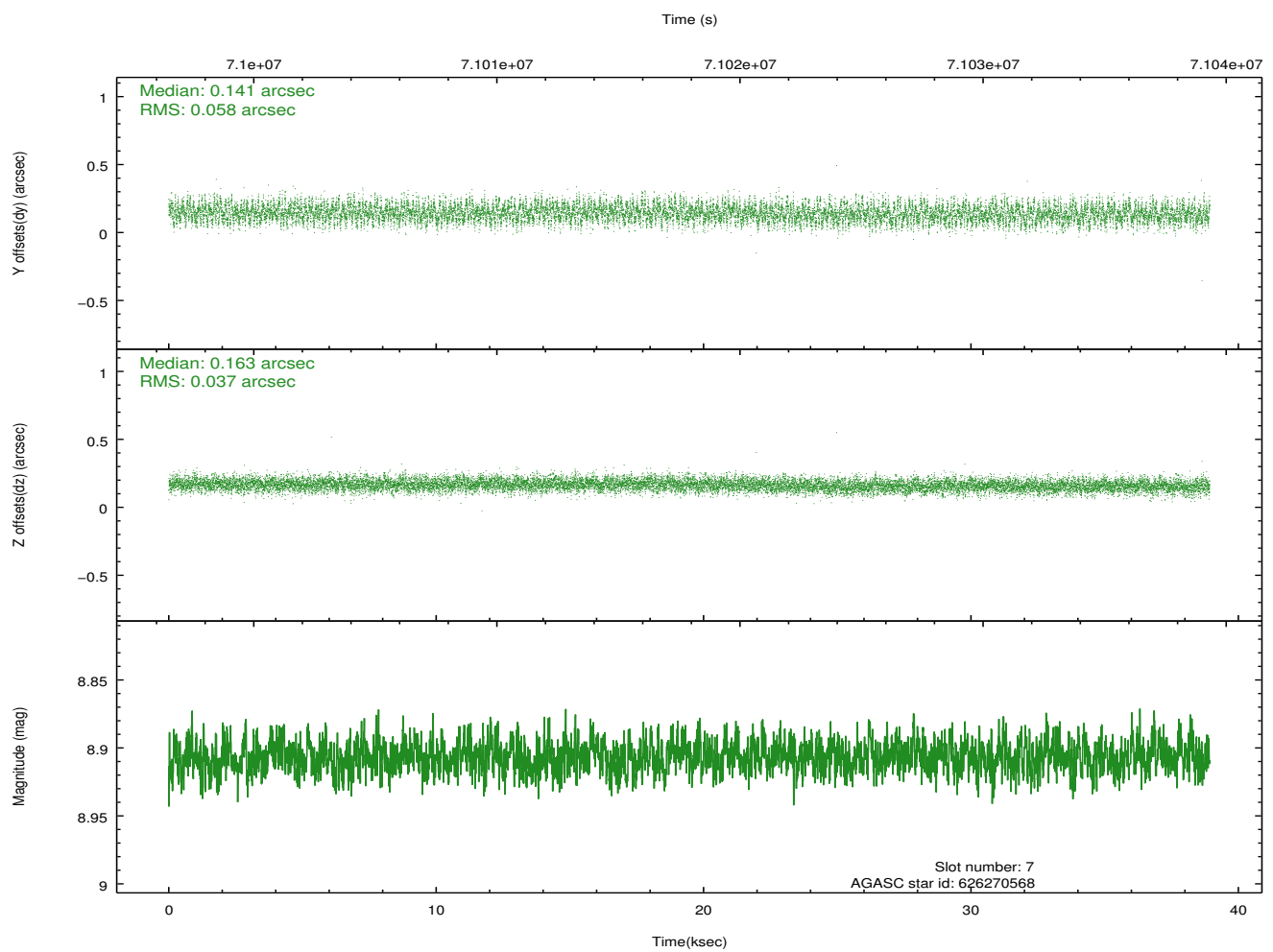
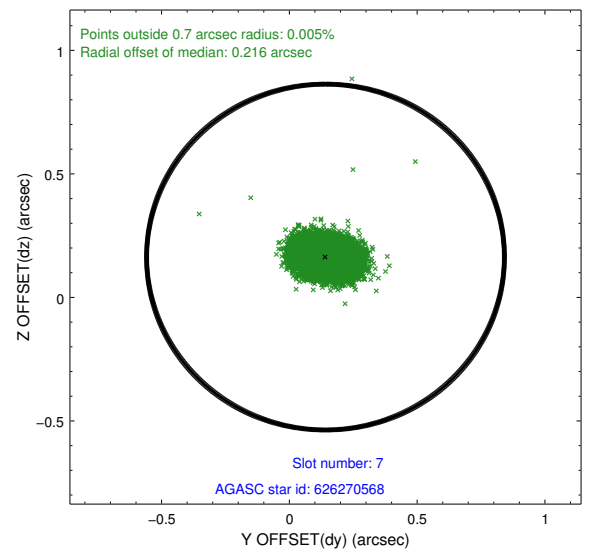
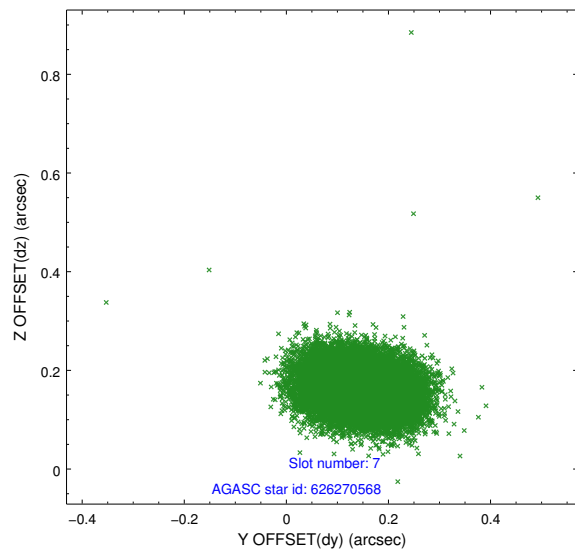
2.4.3 Slot 5



2.4.4 Slot 6

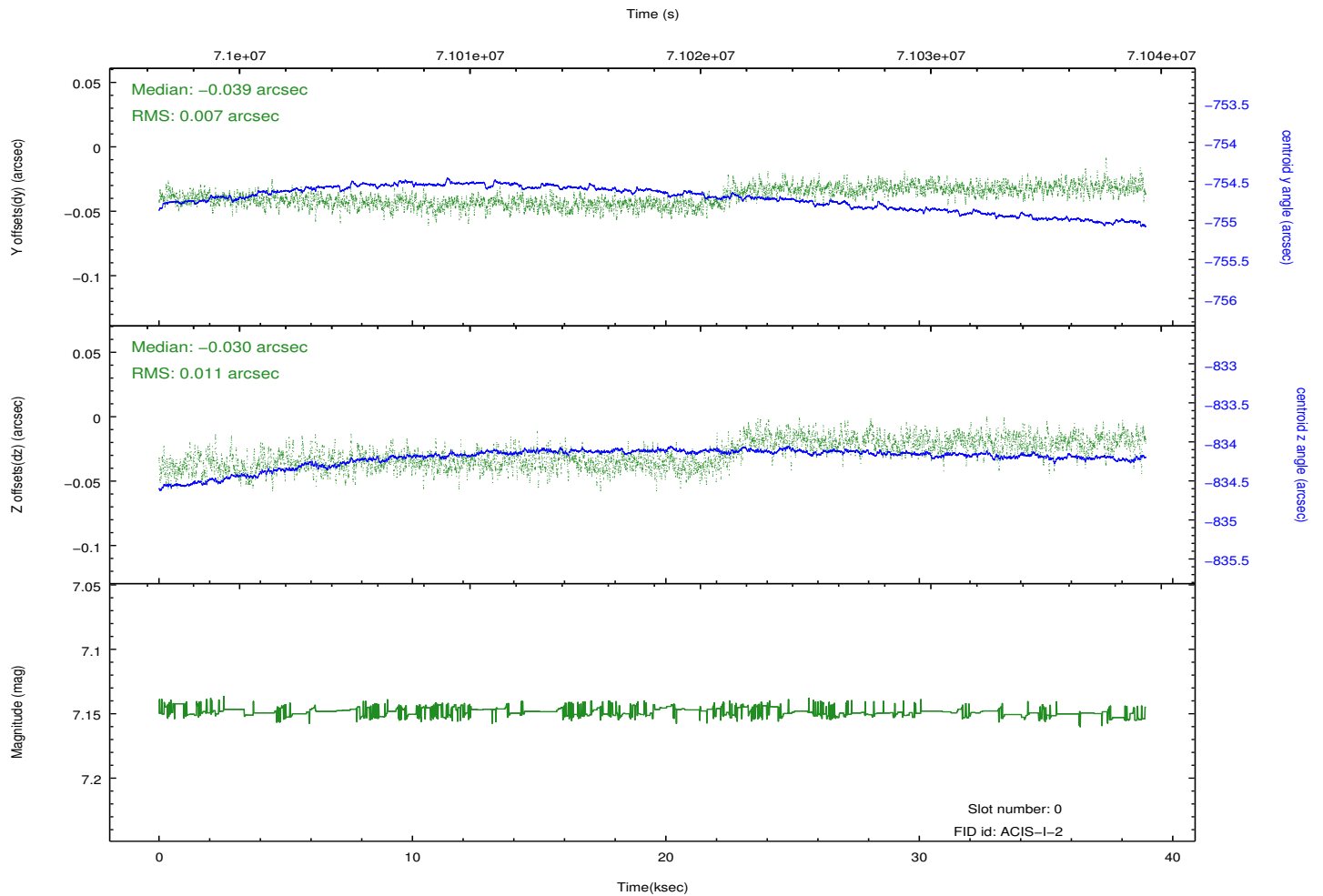
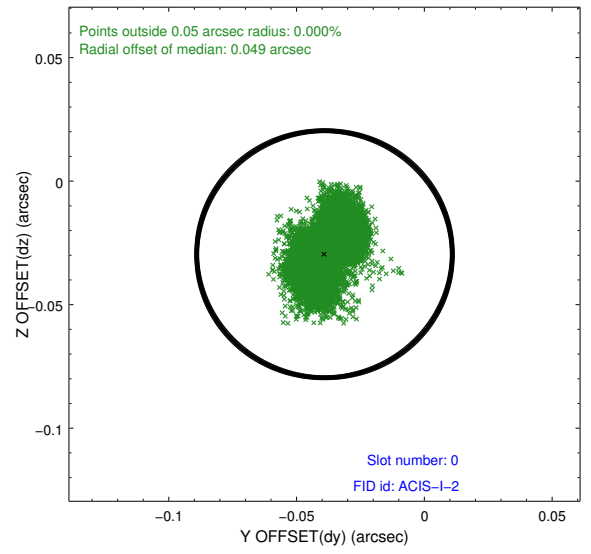
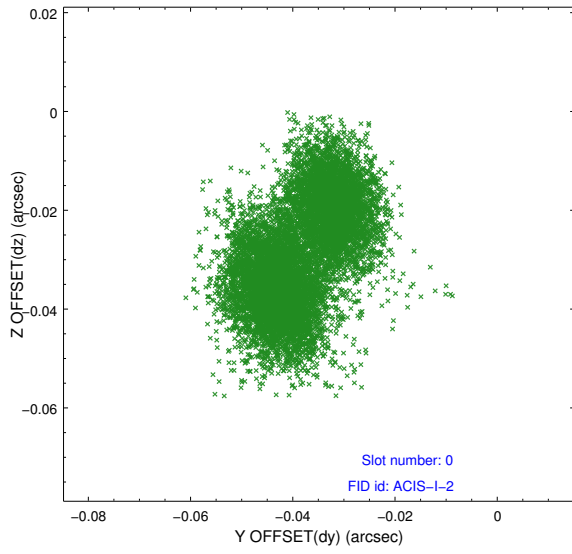


2.4.5 Slot 7

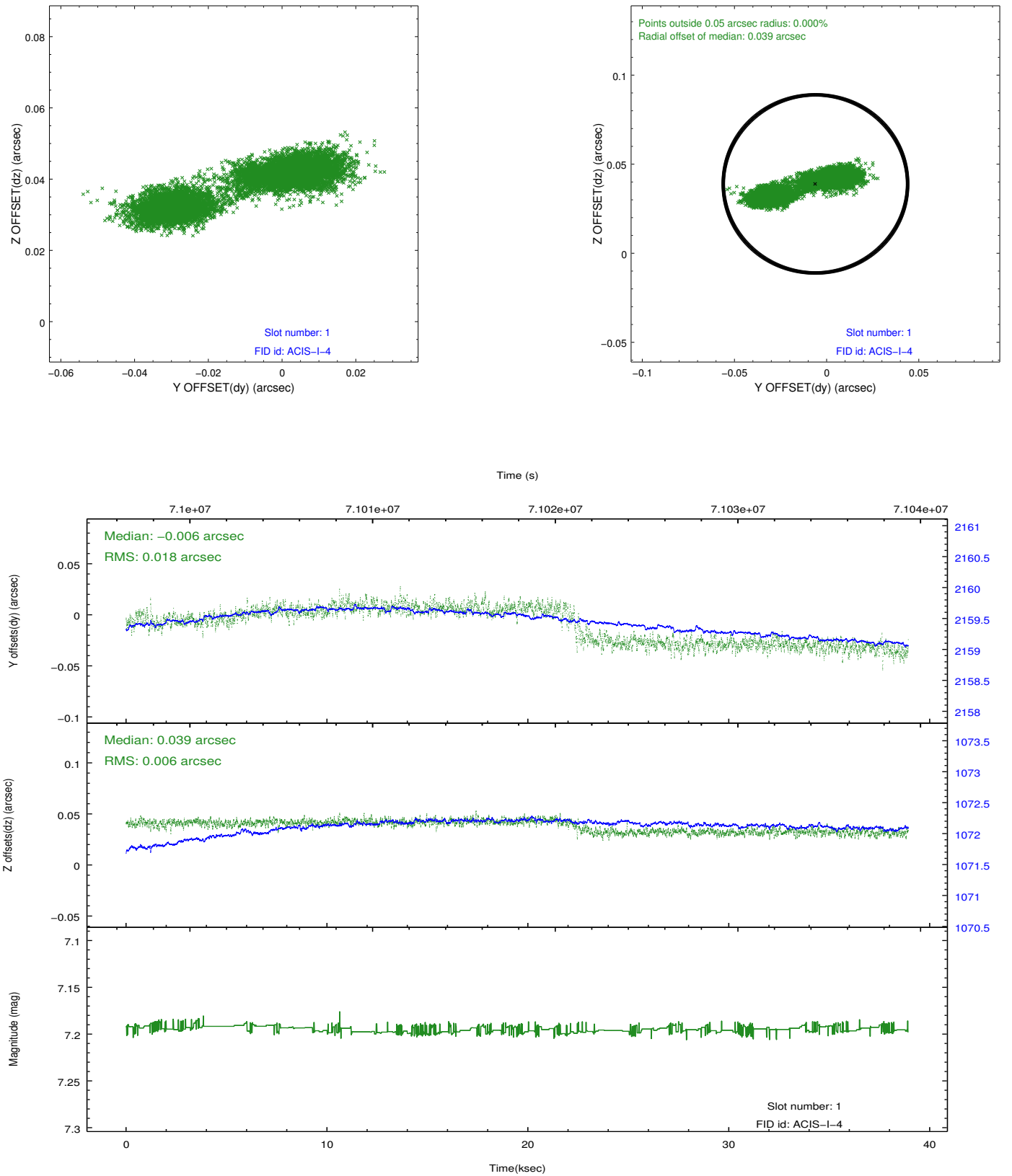


2.5 FID Slots

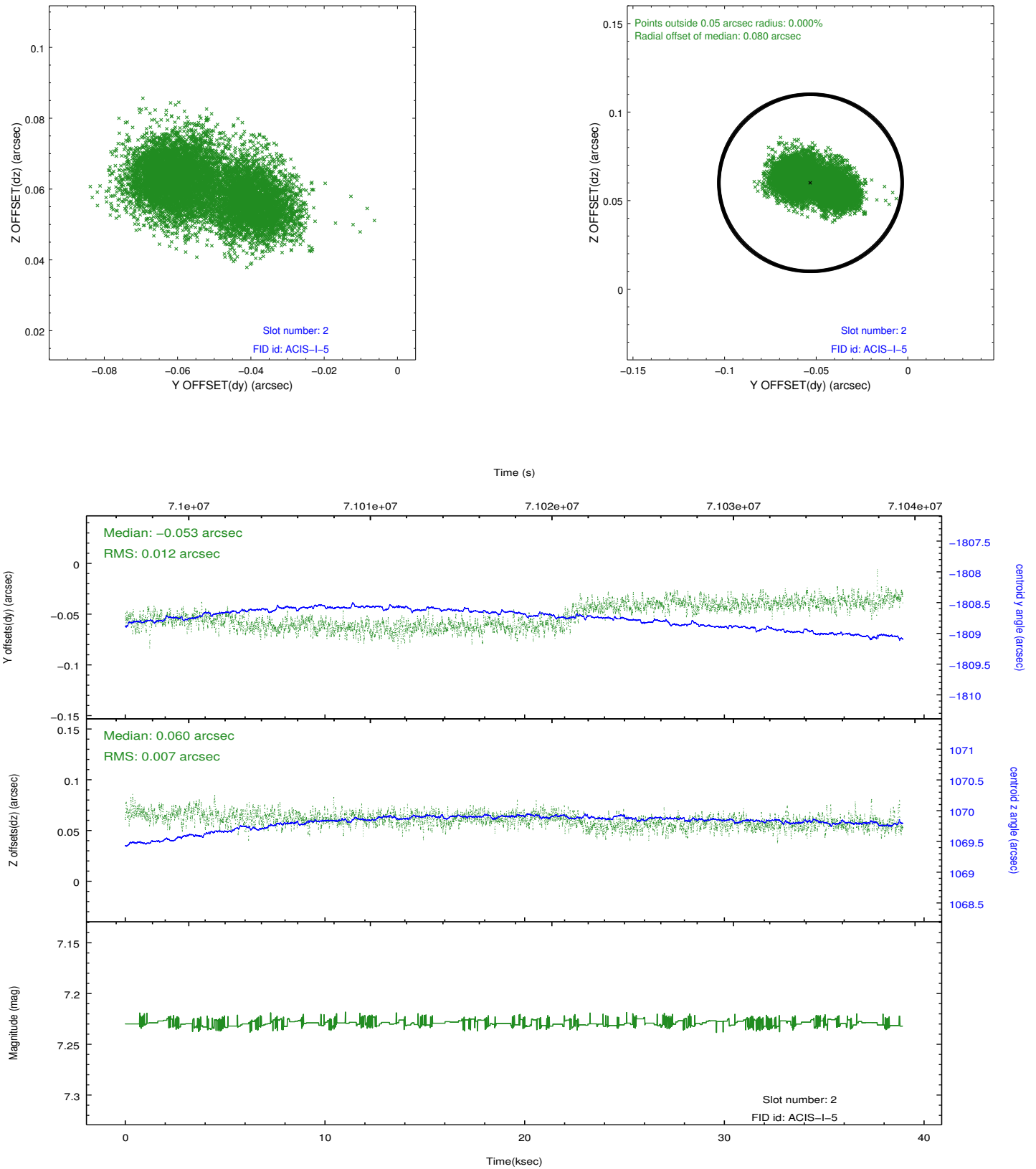
2.5.1 Slot 0



2.5.2 Slot 1



2.5.3 Slot 2



A Summary

A.1 Status

V&V Scientist	Jen Lauer
V&V Date (YYYY-MM-DD)	2012.08.28
V&V Edition	1
V&V Disposition and Status	OK
V&V Charge Time	38.857

A.2 Comments