

V&V Reference Report

L2 ASCDS Version : 10.2.4

Observation 16292 - L2 Version 1
Chandra X-Ray Center

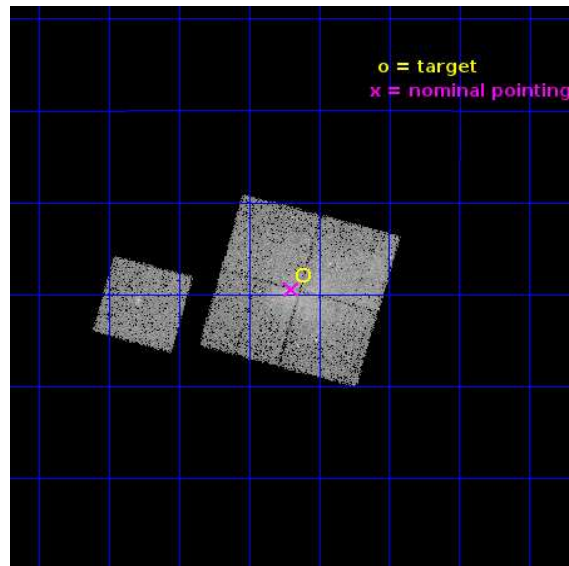
L2 Processing Date : Sep 28 2014

Contents

1	Front	2
2	OBI	3
2.1	OBI	3
2.1.1	Images	3
2.1.2	Bias	3
2.1.3	Parameters	4
2.1.4	Events	4
2.2	Compared Parameters	5
2.3	Aspect	6
2.4	Star Slots	9
2.4.1	Slot 3	9
2.4.2	Slot 4	10
2.4.3	Slot 5	11
2.4.4	Slot 6	12
2.4.5	Slot 7	13
2.5	FID Slots	14
2.5.1	Slot 0	14
2.5.2	Slot 1	15
2.5.3	Slot 2	16
A	Summary	17
A.1	Status	17
A.2	Comments	17

1 Front

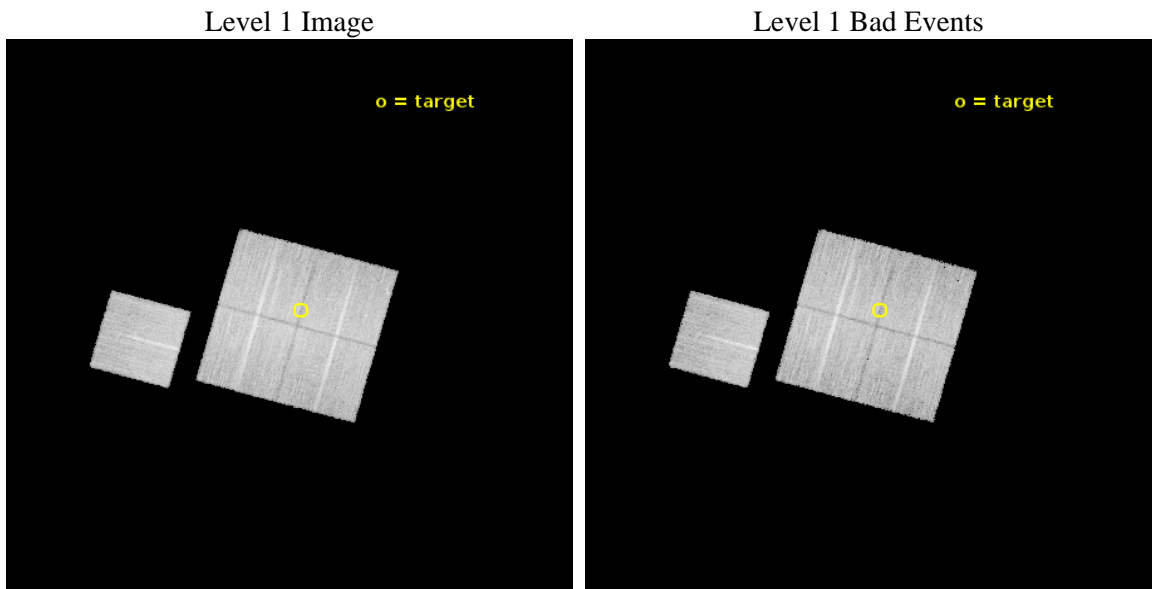
seq_num	801428	Sequence number
obs_id	16292	Observation id
title	Chandra observations of two double radio relic clusters	Proposal t
observer	Dr. Stephen Murray	Principal investigator
object	Abell 2345	Source name
dtycycle	0	
cycle	P	events from which exps? Prim/Second/Both
ra_targ	321.778333	Observer's specified target RA [deg]
dec_targ	-12.132222	Observer's specified target Dec [deg]
ra_nom	321.79944244473	Nominal RA [deg]
dec_nom	-12.157105960068	Nominal Dec [deg]
roll_nom	285.59376981625	Nominal Roll [deg]
revision	1	Processing version of data
ontime	20084.686897397	Sum of GTIs [s]
livetime	19822.265676951	Livetime [s]
ontime0	20084.645857394	Sum of GTIs [s]
ontime1	20084.686897397	Sum of GTIs [s]
ontime2	20084.7279374	Sum of GTIs [s]
ontime3	20084.768977404	Sum of GTIs [s]
ontime6	20084.60481739	Sum of GTIs [s]
l2events	66274	Number of level 2 events



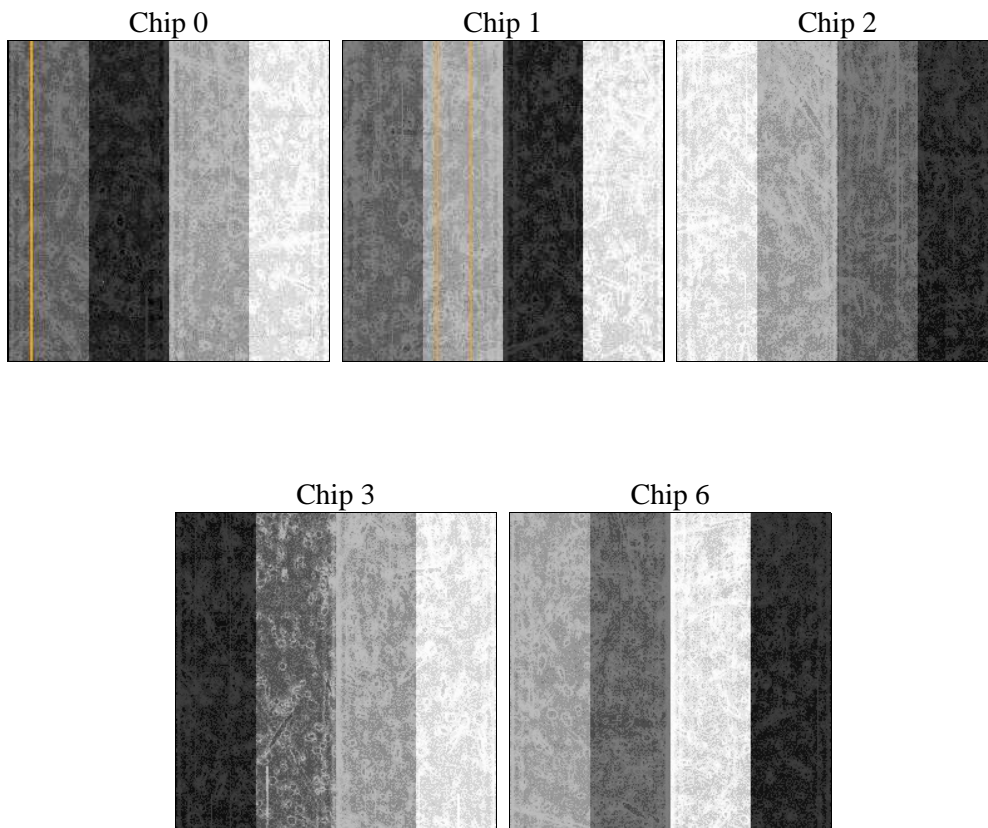
2 OBI

2.1 OBI

2.1.1 Images



2.1.2 Bias



2.1.3 Parameters

obi_num	0	Obi number	sched_exp_time	20000.000000	[s] Scheduled observation exposure time
ascdsver	10.2.4	Processing system revision	ontime	20084.686897397	Sum of GTIs [s]
caldbver	4.6.3	 	ontime0	20084.645857394	Sum of GTIs [s]
date	2014-09-28T18:25:03	Date and time of file creation	ontime1	20084.686897397	Sum of GTIs [s]
revision	1	Processing version of data	ontime2	20084.7279374	Sum of GTIs [s]
			ontime3	20084.768977404	Sum of GTIs [s]
			ontime6	20084.60481739	Sum of GTIs [s]
			l1events	520431	Number of level 1 events

2.1.4 Events

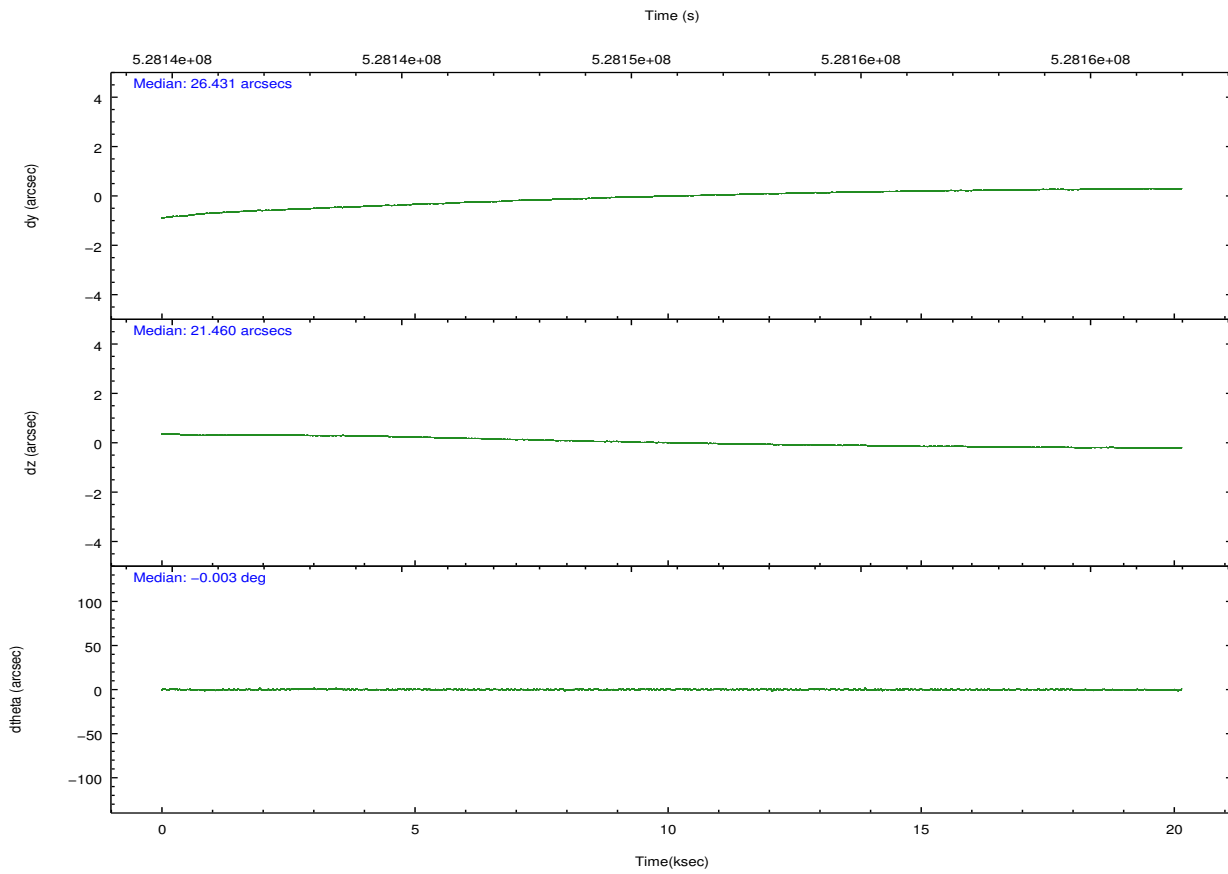
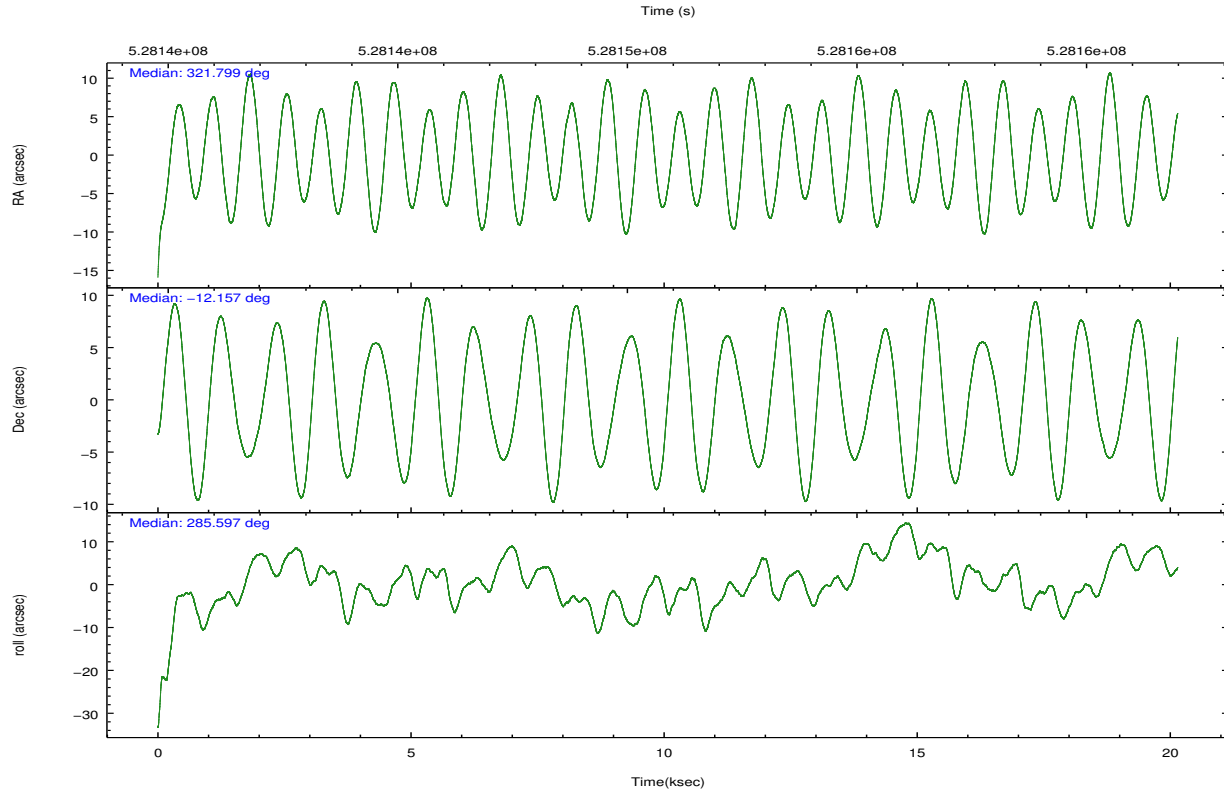
	ccd 0	ccd 1	ccd 2	ccd 3	ccd 6
level 1 events	97111	103633	108625	106769	104293
rejected events	80629	84304	93674	93066	91657
rejected %	83%	81%	86%	87%	87%

	ccd 0	ccd 1	ccd 2	ccd 3	ccd 6
grade 0 events	7604	9128	6731	5717	4377
	7%	8%	6%	5%	4%
grade 1 events	77	73	71	55	46
	0%	0%	0%	0%	0%
grade 2 events	3497	3879	3236	2921	2759
	3%	3%	2%	2%	2%
grade 3 events	1430	1548	1289	1308	1349
	1%	1%	1%	1%	1%
grade 4 events	1351	1549	1260	1295	1319
	1%	1%	1%	1%	1%
grade 5 events	4934	5233	4634	5497	5427
	5%	5%	4%	5%	5%
grade 6 events	2607	3231	2441	2472	2837
	2%	3%	2%	2%	2%
grade 7 events	75611	78992	88963	87504	86179
	77%	76%	81%	81%	82%

2.2 Compared Parameters

Parameter	Planned	Actual	Parameter	Planned	Actual
Instrument	ACIS	ACIS	Obspar format version number	7	7
Detector	ACIS-01236	ACIS-01236	Obspar file type	PREDICTED	ACTUAL
Grating	NONE	NONE	Obspar update status	NONE	UPDATED
Data mode	VFAINT	VFAINT	CCD I0 on	Y	Y
Observation mode	POINTING	POINTING	CCD I1 on	Y	Y
[deg] Pointing RA	321.779209	321.7994424447298	CCD I2 on	Y	Y
[deg] Pointing Dec	-12.137865	-12.15710596006763	CCD I3 on	Y	Y
[deg] Pointing Roll	285.380830	285.5937698162522	CCD S0 on	N	N
[mm] SIM focus pos	-0.782348	-0.7809083437167272	CCD S1 on	N	N
[mm] SIM defocus	0	0.001439871863259334	CCD S2 on	O1	Y
[mm] SIM translation stage pos	-233.592463	-233.5874344608287	CCD S3 on	N	N
[mm] SIM translation stage offset	0	-0.005018542100998502	CCD S4 on	N	N
[s] Observation start time (MET)	528140947.184000	528139652.60154	CCD S5 on	N	N
Observation start date	2014-09-26T17:48:00	2014-09-26T17:27:32	Number of optional ACIS chips dropped	0	0
[s] Observation end time (MET)	528160947.184000	528161371.84025	On-chip summing requested	N	N
Observation end date	2014-09-26T23:21:20	2014-09-26T23:29:31	Subarray requested	NONE	NONE
Read mode	TIMED	TIMED	Alternating exposures requested	N	N
			[s] Primary exposure time	0.000000	3.1

2.3 Aspect

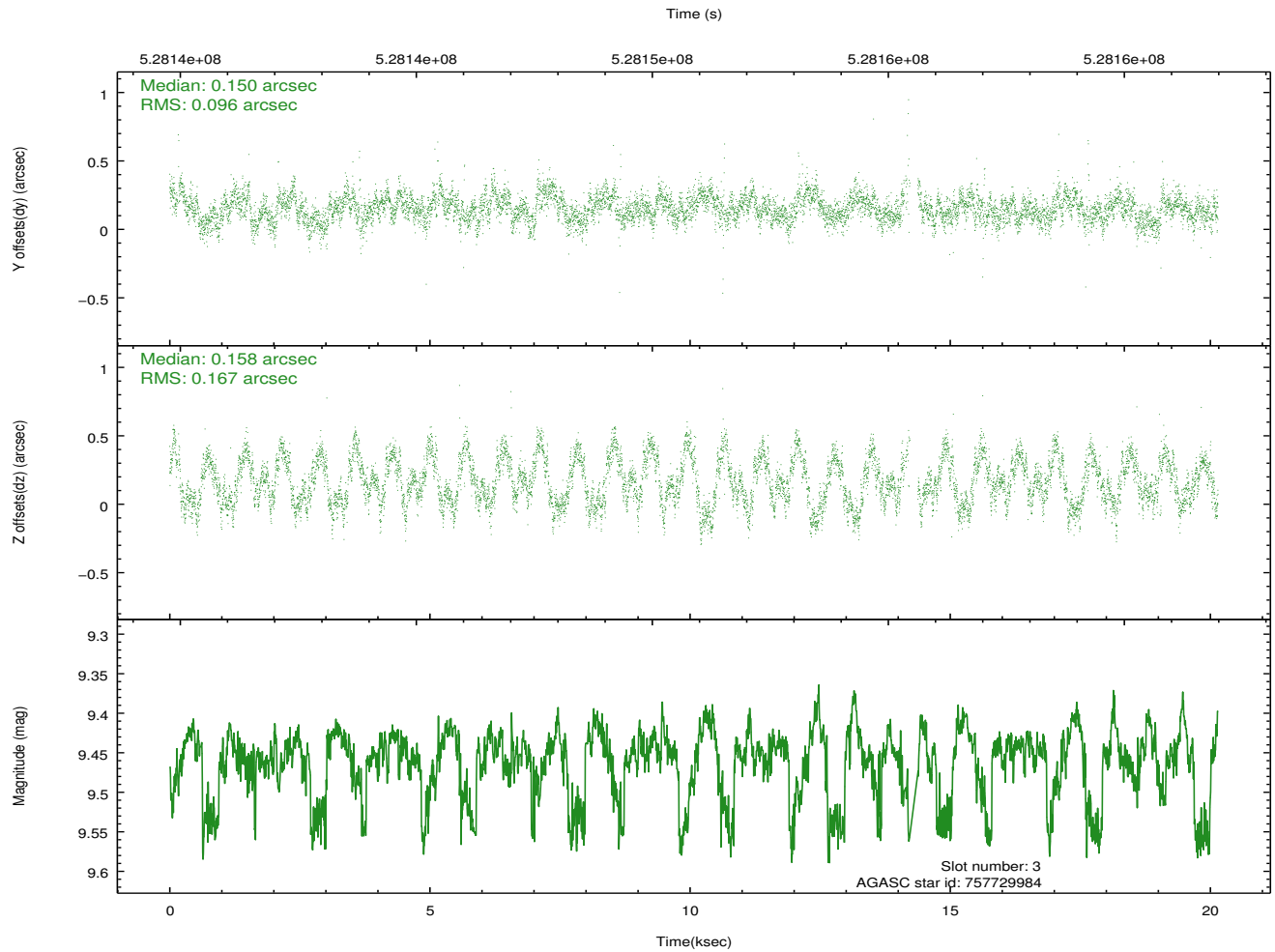
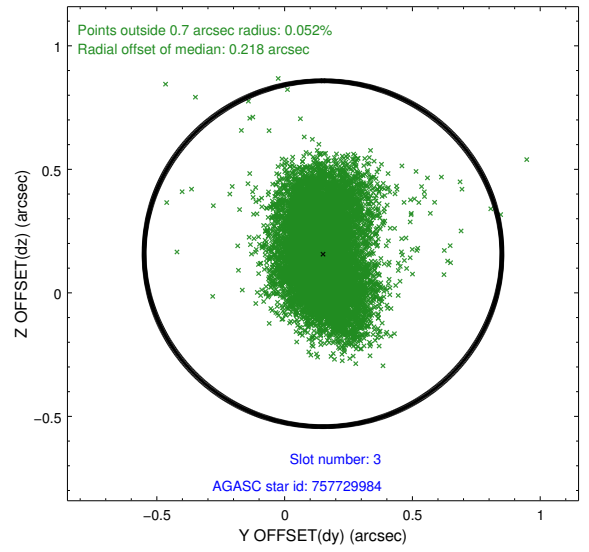
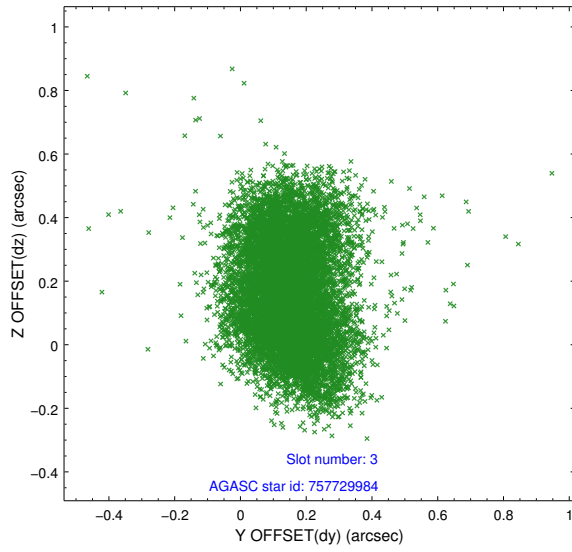


Slot Statistics

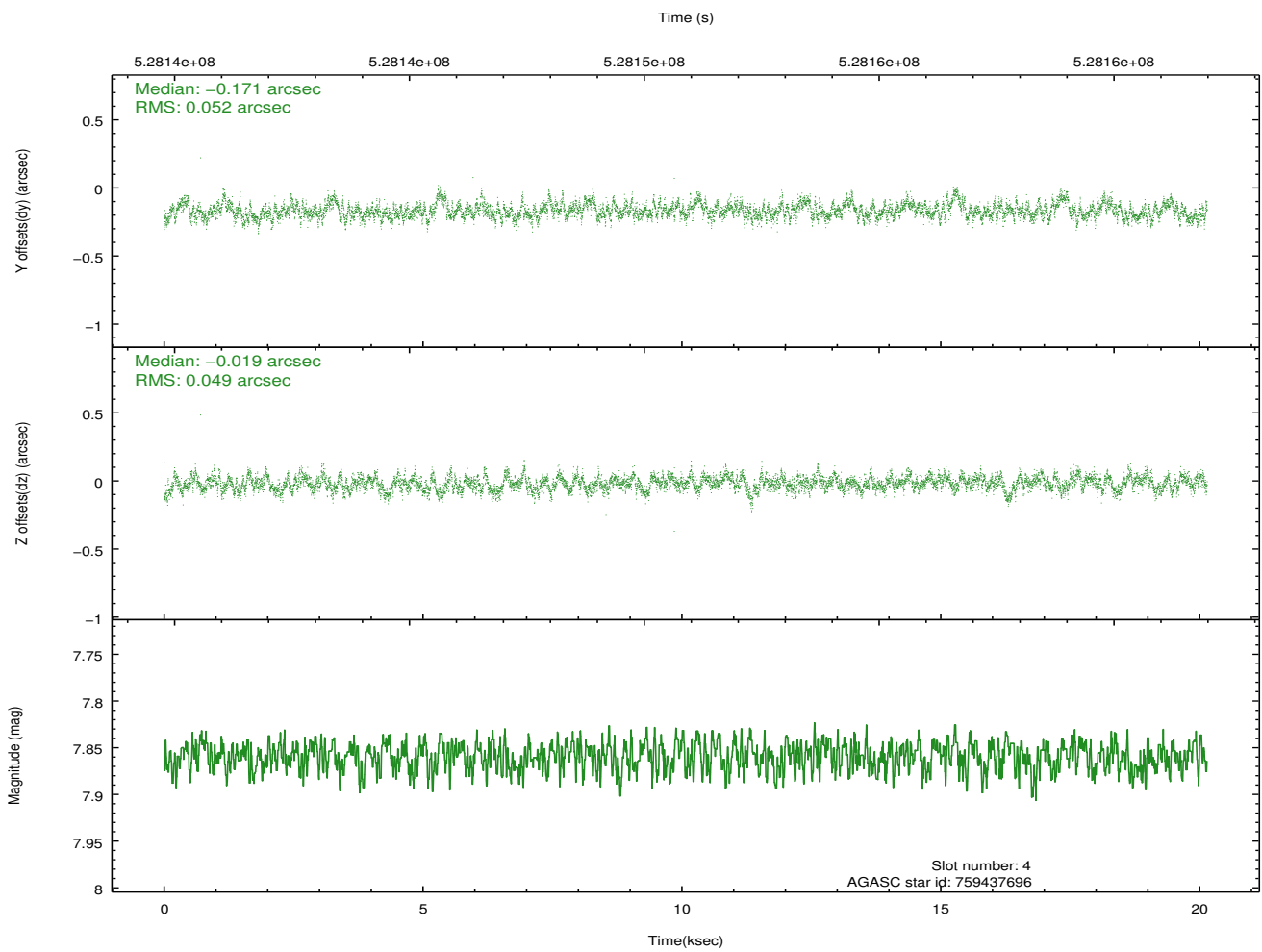
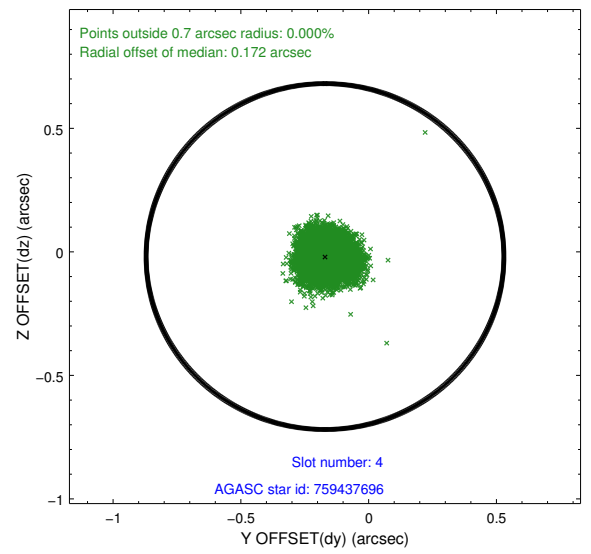
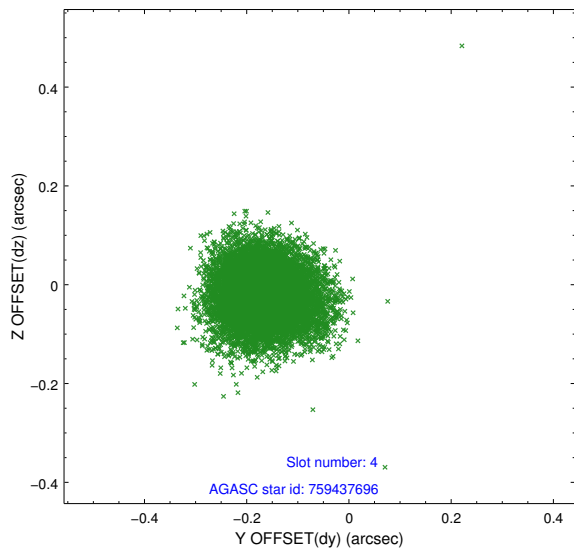
slot	status	id	mag	n_pts	med_dy	med_dz	dr1	dr2	ra	dec	mean_y	mean_z
0	FID	ACIS-I-1	7.08	4913	0.057	-0.019	0.011	0.017	0.000000	0.000000	912.88	-845.26
1	FID	ACIS-I-5	7.07	4914	-0.283	0.040	0.009	0.016	0.000000	0.000000	-1835.51	1052.13
2	FID	ACIS-I-6	7.07	4914	0.136	0.049	0.015	0.024	0.000000	0.000000	378.24	1696.91
3	GUIDE	757729984	9.45	9610	0.150	0.158	0.206	0.328	321.599428	-11.651740	-1854.86	-146.67
4	GUIDE	759437696	7.86	9827	-0.171	-0.019	0.076	0.124	322.021125	-11.928488	-500.06	1021.90
5	GUIDE	759438104	9.23	9825	0.002	-0.249	0.159	0.257	321.852488	-12.251639	463.65	139.98
6	GUIDE	759438432	8.96	9826	-0.111	-0.093	0.121	0.195	322.179002	-12.589997	1943.92	922.68
7	GUIDE	759438560	9.28	9755	0.125	0.194	0.150	0.233	321.843715	-12.531566	1427.90	-157.14

2.4 Star Slots

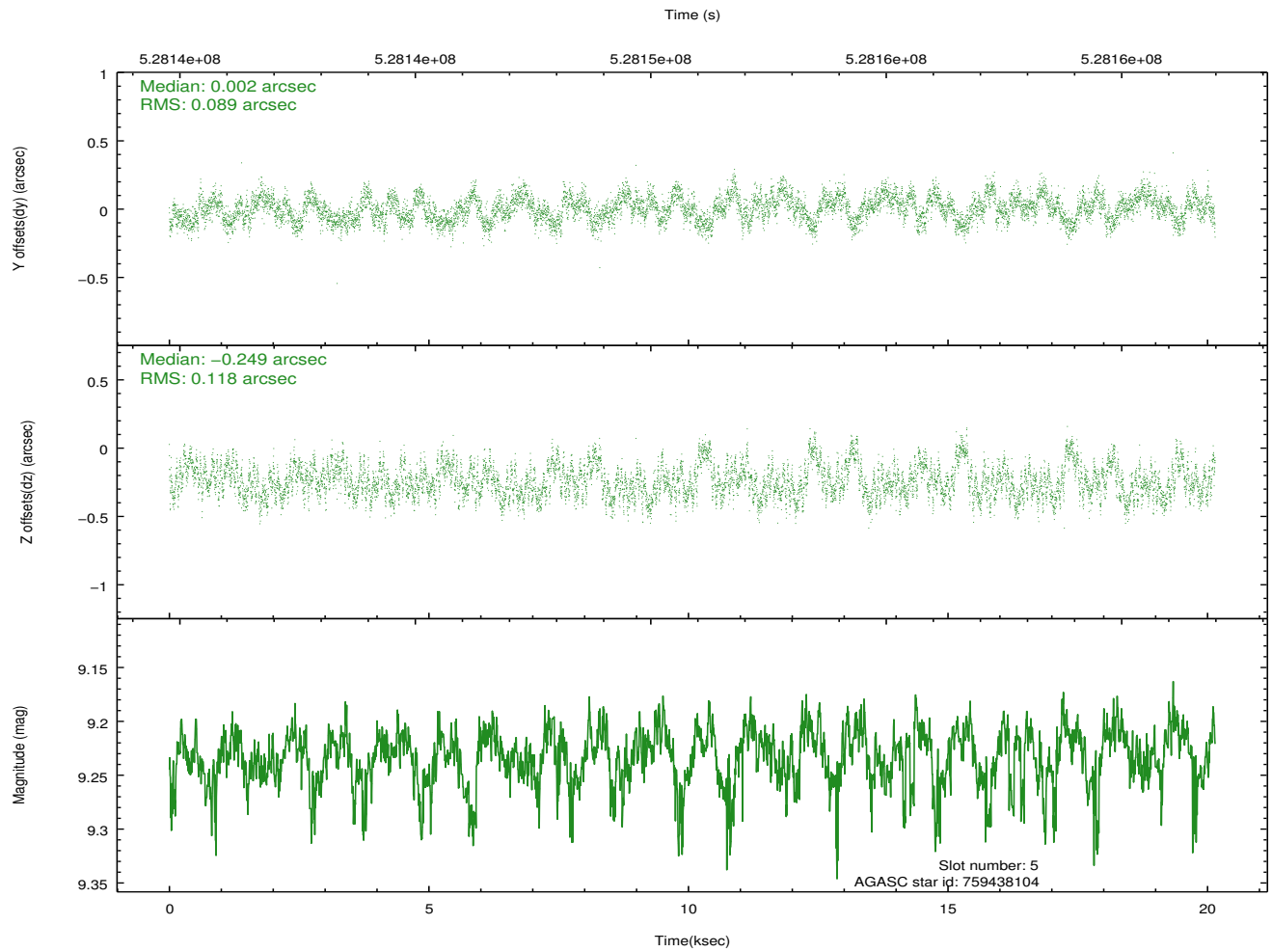
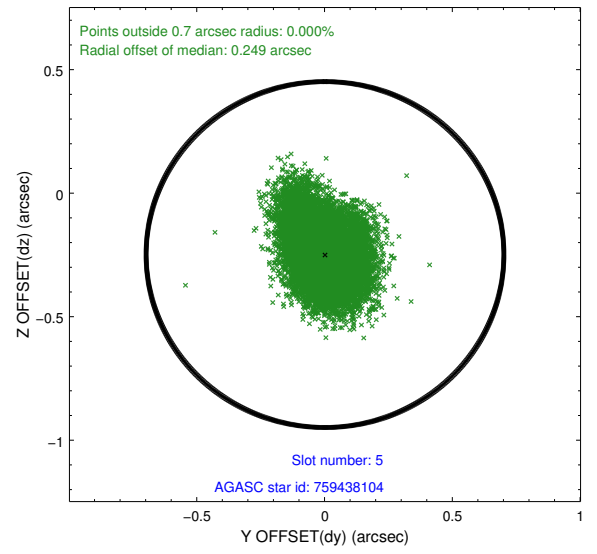
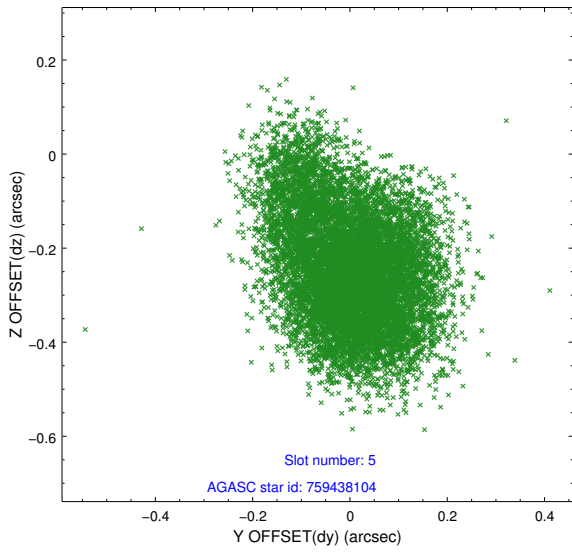
2.4.1 Slot 3



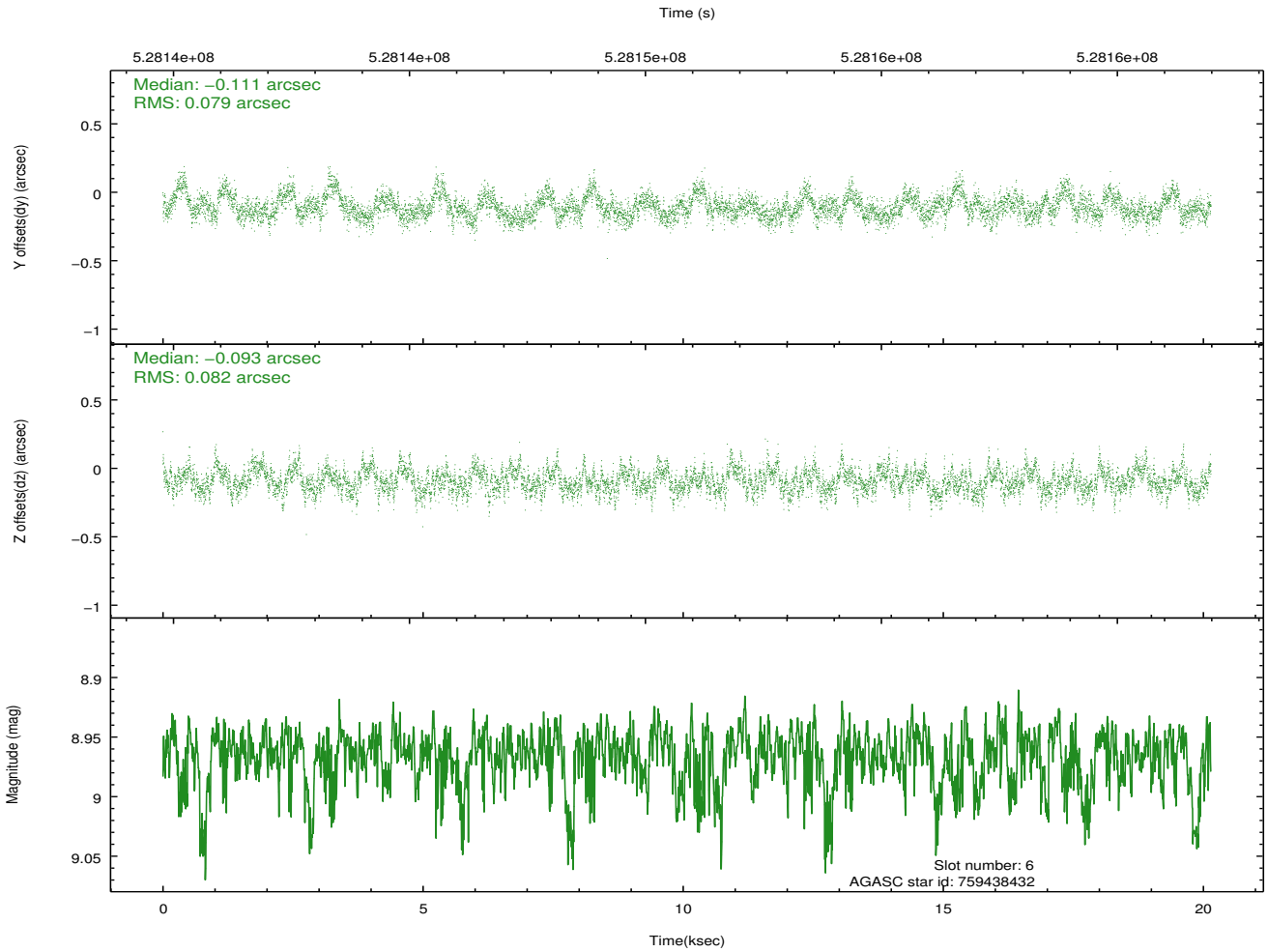
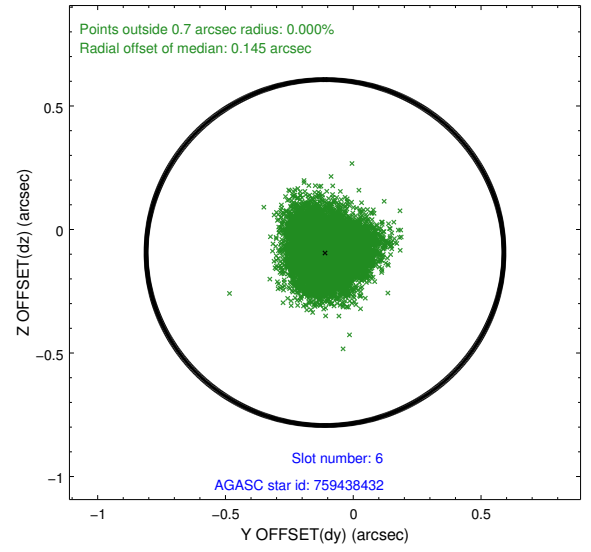
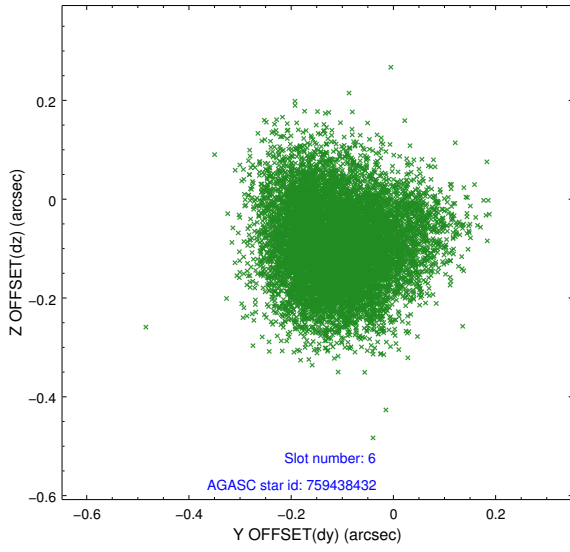
2.4.2 Slot 4



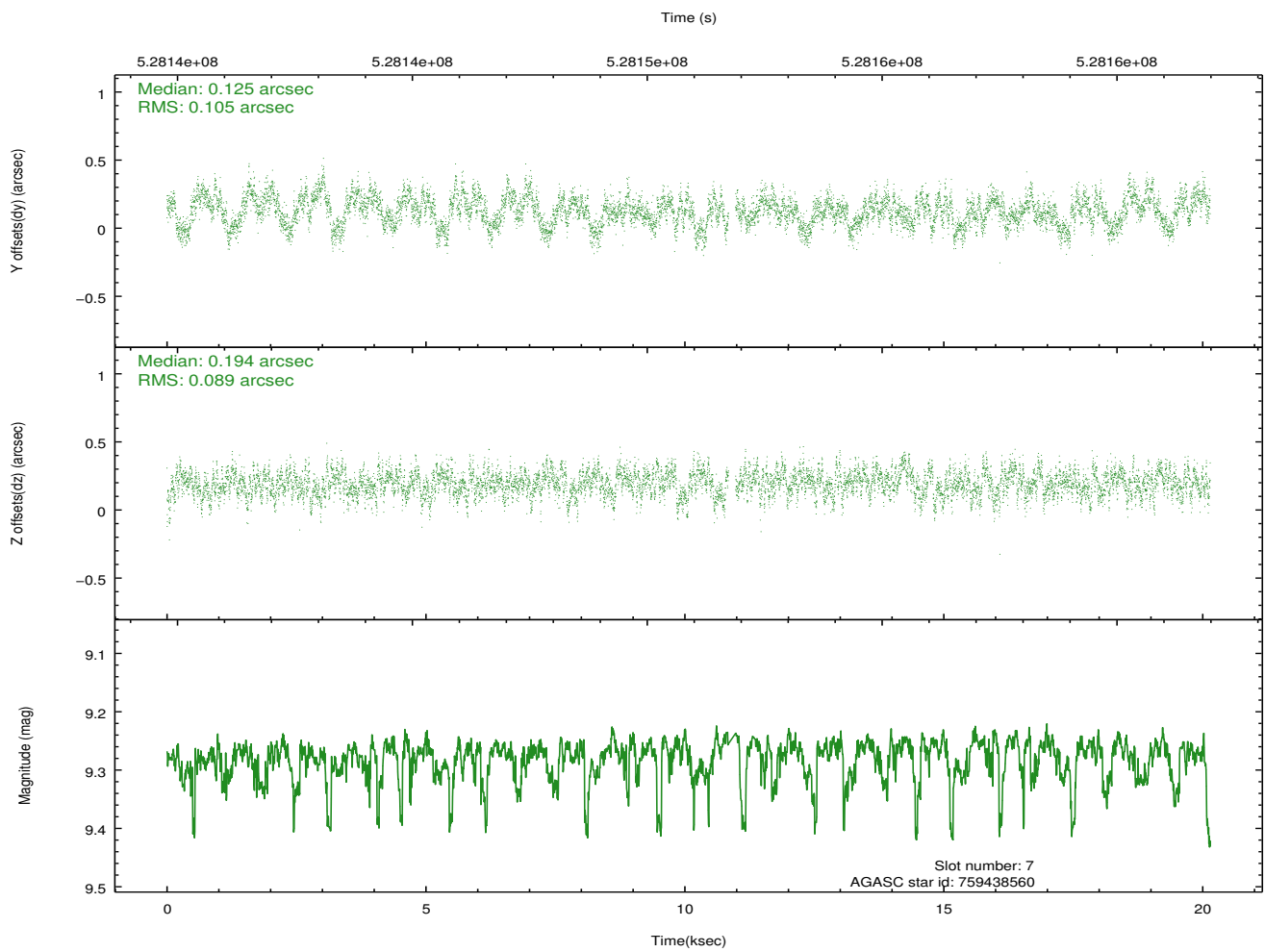
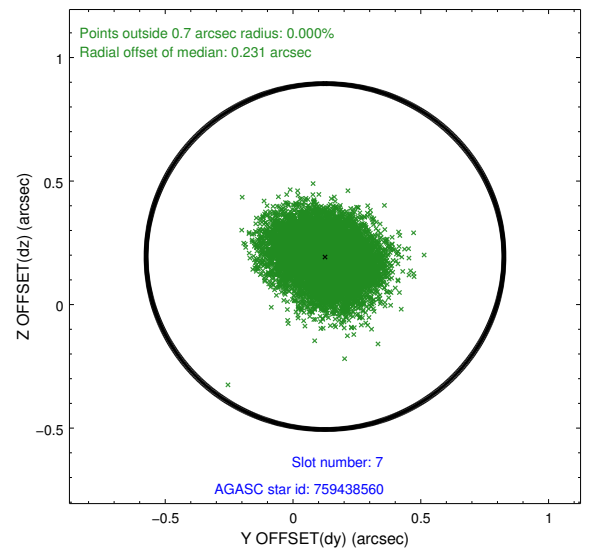
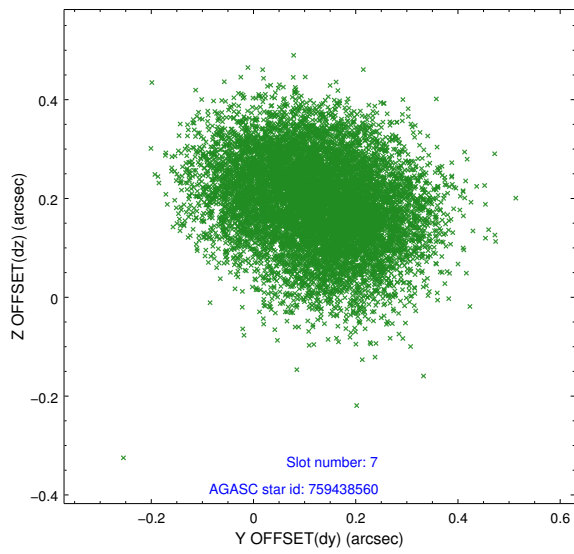
2.4.3 Slot 5



2.4.4 Slot 6

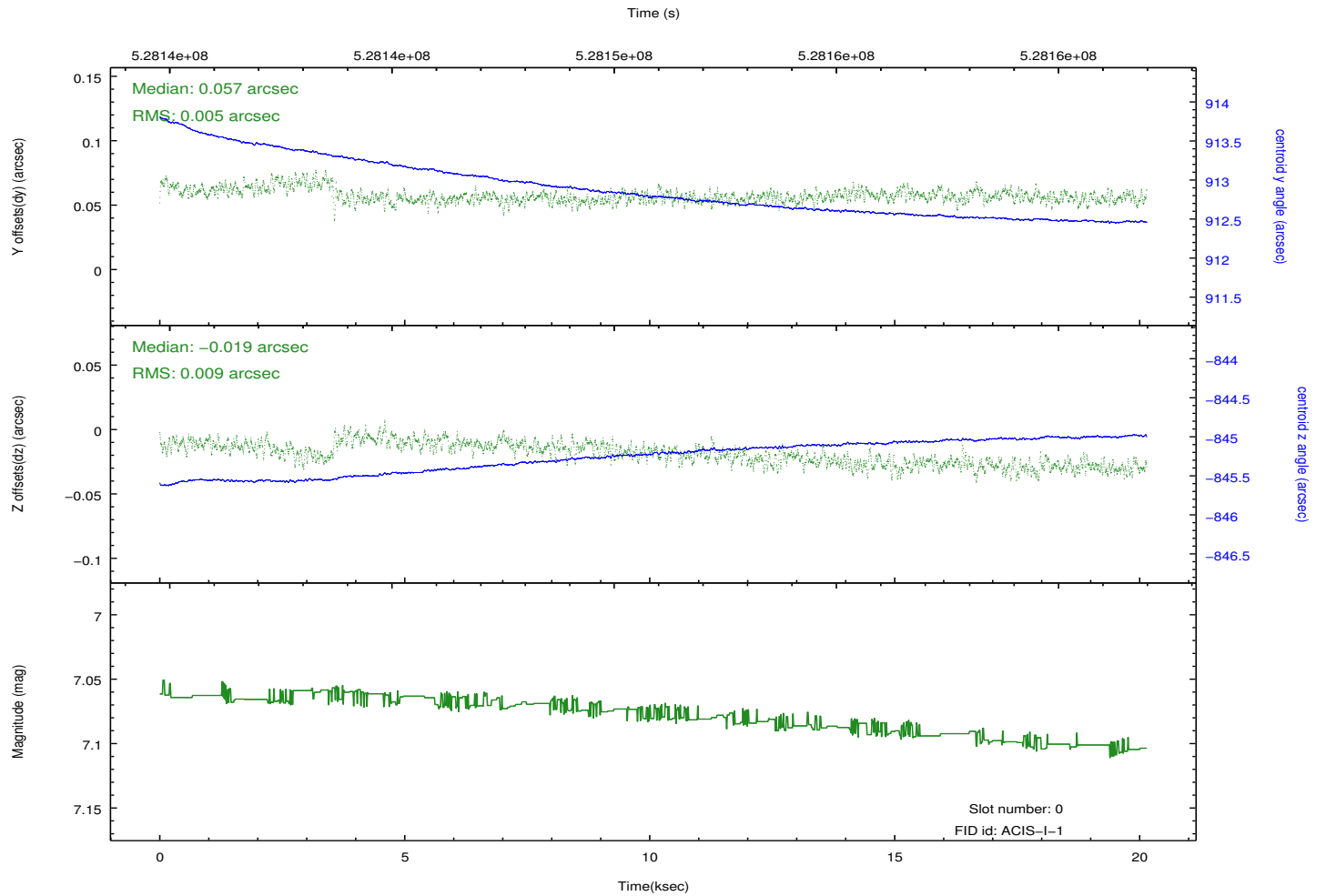
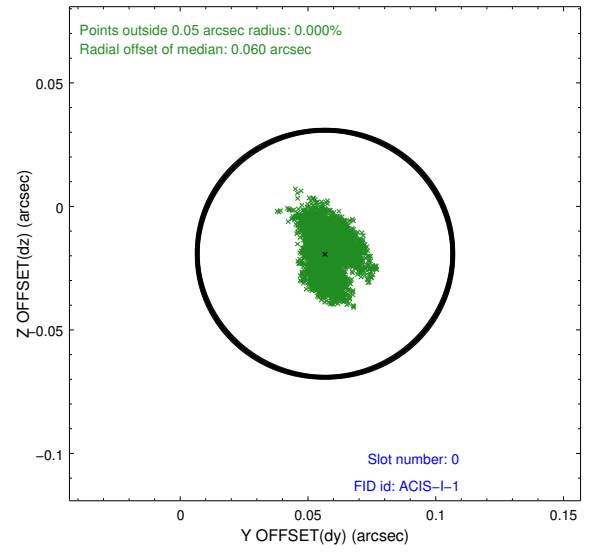
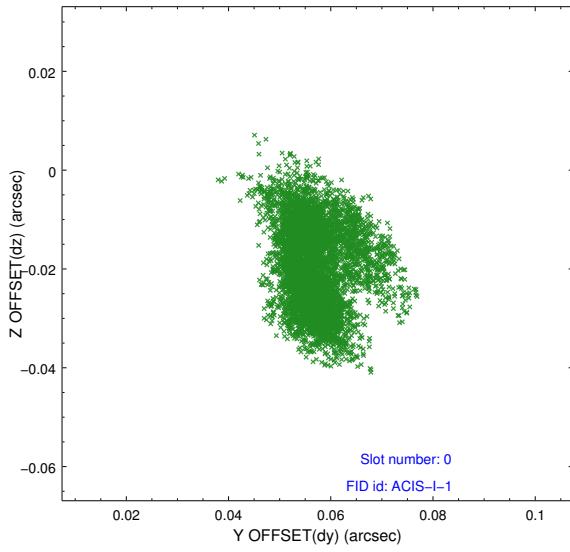


2.4.5 Slot 7

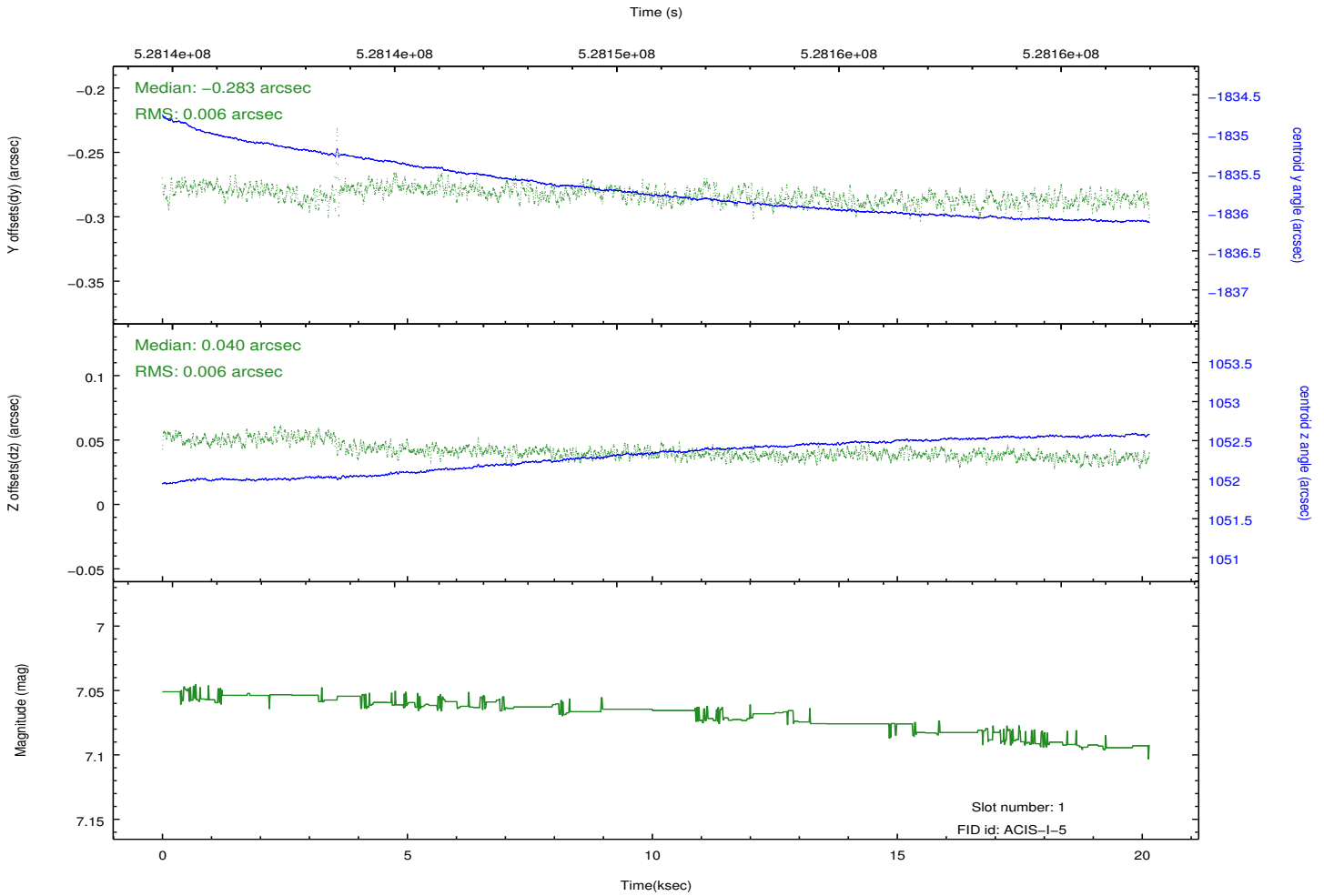
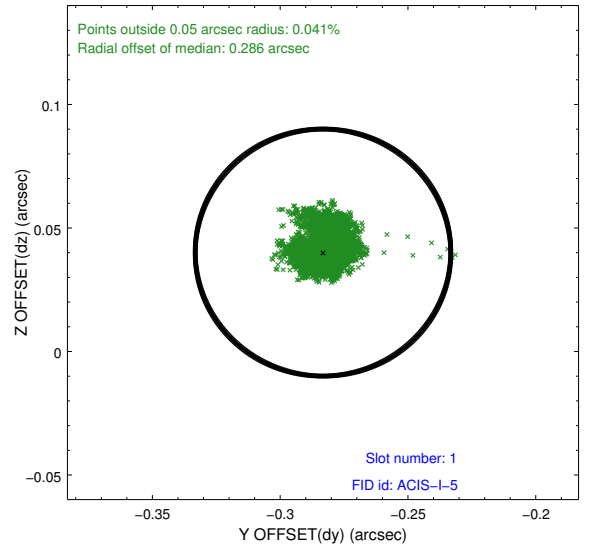
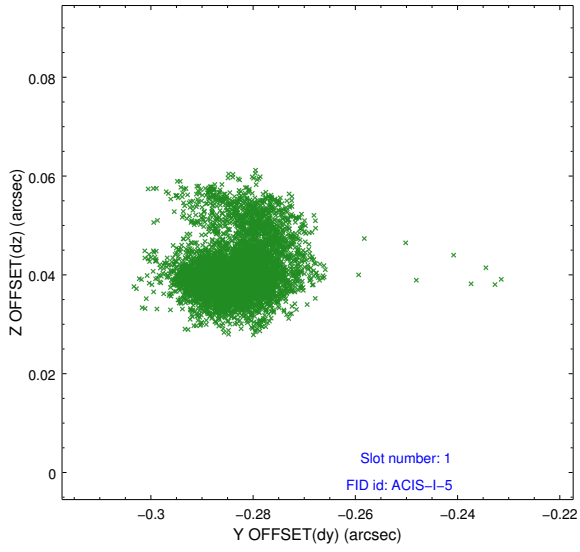


2.5 FID Slots

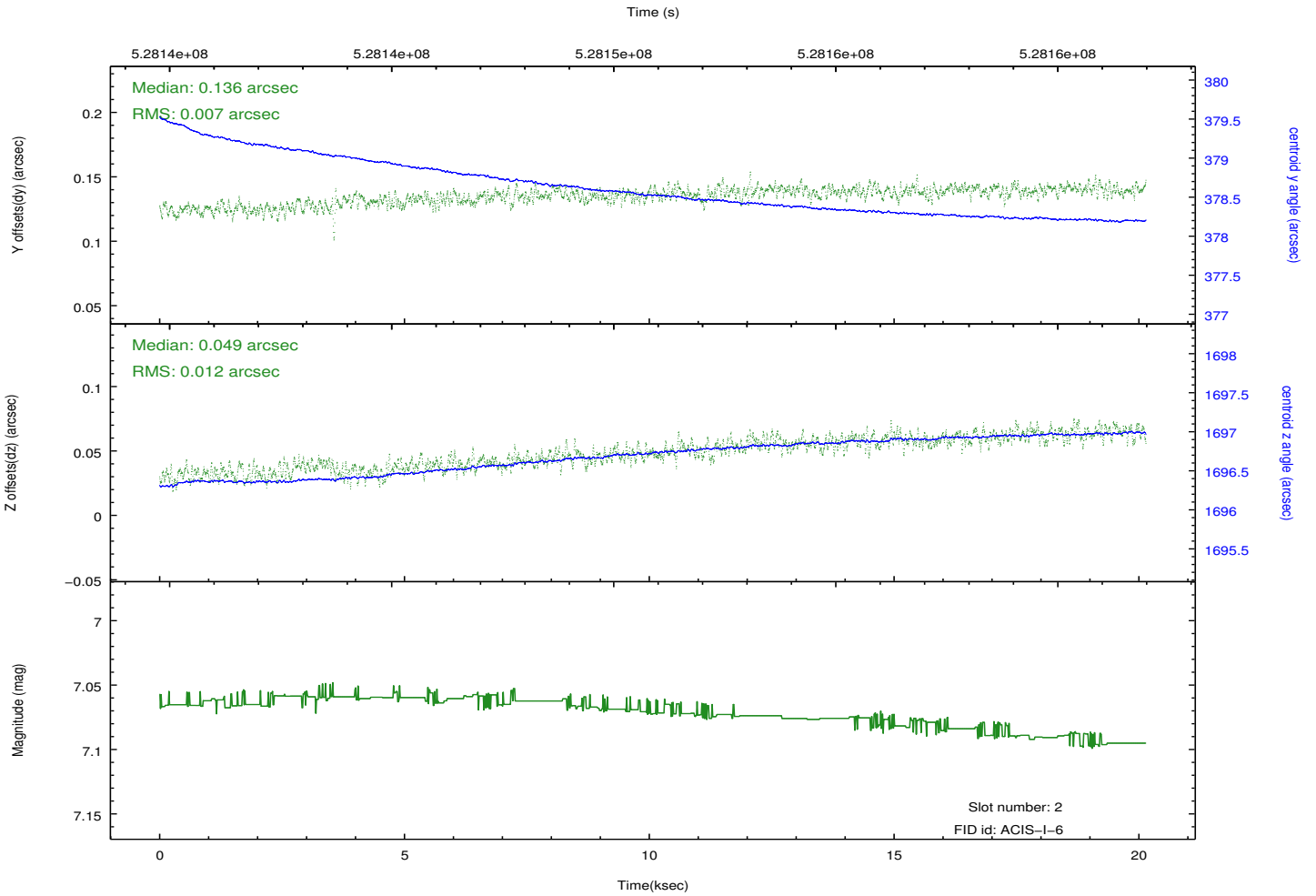
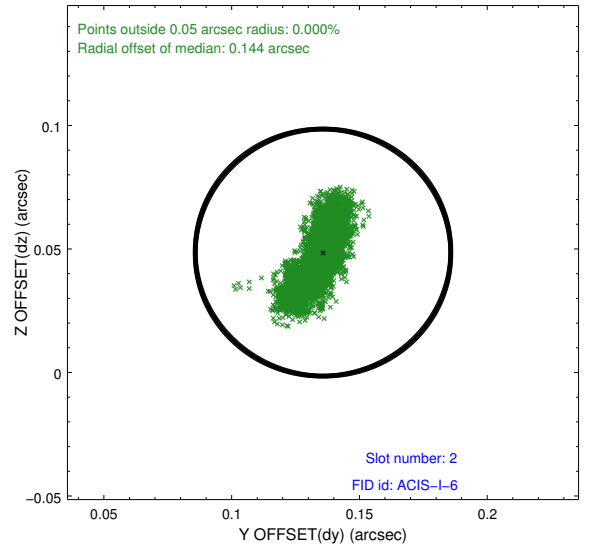
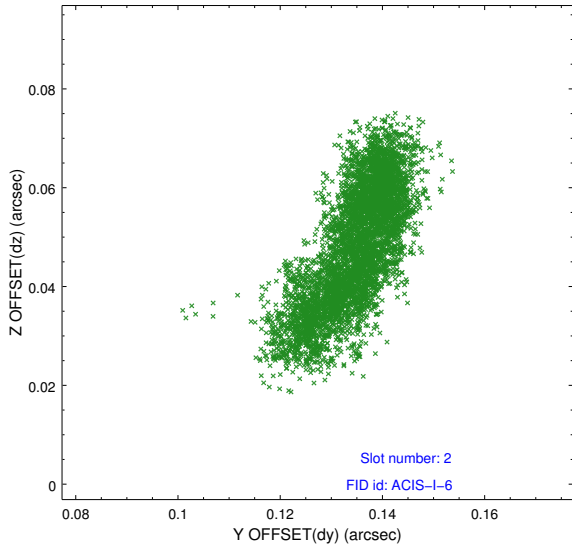
2.5.1 Slot 0



2.5.2 Slot 1



2.5.3 Slot 2



A Summary

A.1 Status

V&V Scientist	Beth Sundheim
V&V Date (YYYY-MM-DD)	2014.09.28
V&V Edition	1
V&V Disposition and Status	OK
V&V Charge Time	20.084686897397

A.2 Comments