

V&V Reference Report

L2 ASCDS Version : 8.4.5

Observation 1712 - L2 Version 4
Chandra X-Ray Center

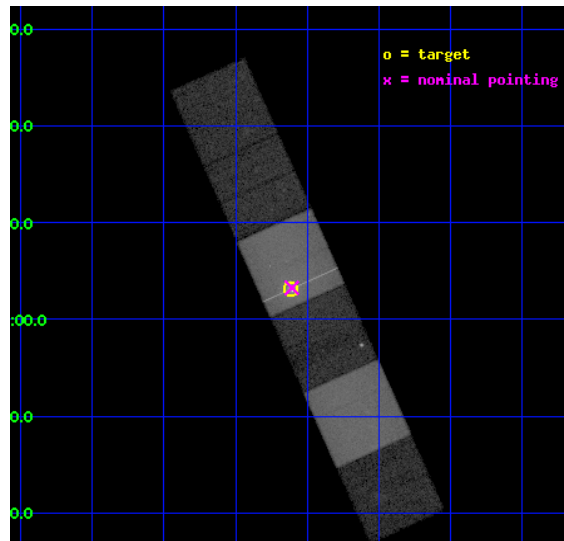
L2 Processing Date : Aug 29 2012

Contents

1	Front	2
2	OBI	3
2.1	OBI	3
2.1.1	Images	3
2.1.2	Bias	3
2.1.3	Parameters	4
2.1.4	Events	4
2.2	Compared Parameters	5
2.3	Aspect	6
2.4	Star Slots	9
2.4.1	Slot 3	9
2.4.2	Slot 4	10
2.4.3	Slot 5	11
2.4.4	Slot 6	12
2.4.5	Slot 7	13
2.5	FID Slots	14
2.5.1	Slot 0	14
2.5.2	Slot 1	15
2.5.3	Slot 2	16
A	Summary	17
A.1	Status	17
A.2	Comments	17

1 Front

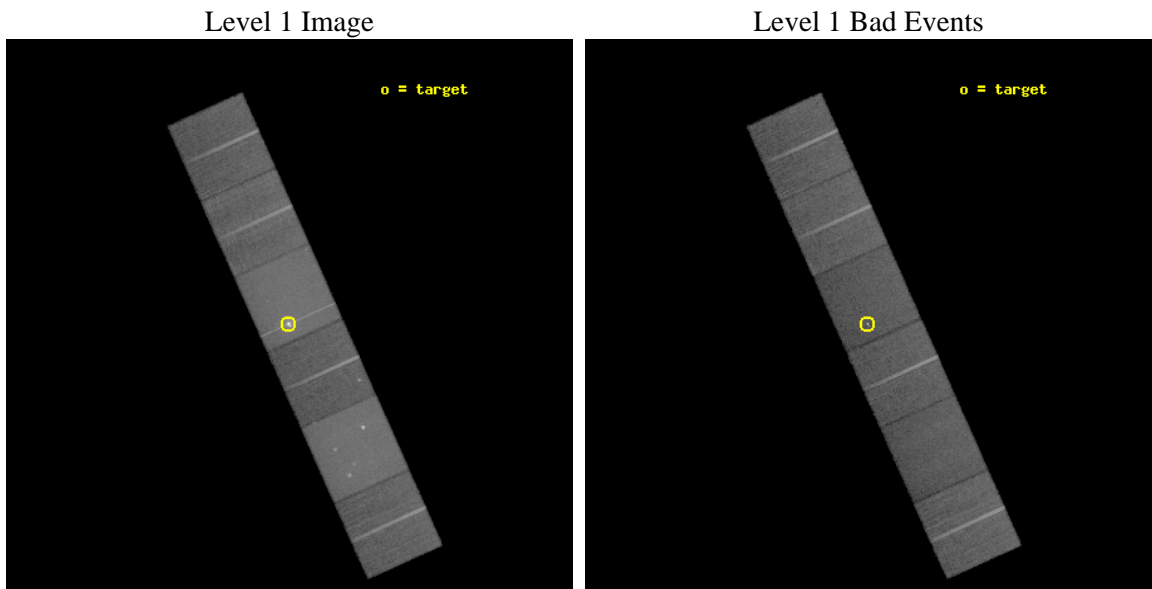
seq_num	790054	Sequence number
obs_id	1712	Observation id
title	IN FLIGHT CALIBRATION OF THE HETGS EFFECTIVE AREA AND CROSS DISPERSION PROFILE	Proposal title
observer	Dr. CXC Calibration	Principal investigator
object	3C 273	Source name
dtcycle	0	
cycle	P	events from which exps? Prim/Second/Both
ra_targ	187.277917	Observer's specified target RA [deg]
dec_targ	2.052389	Observer's specified target Dec [deg]
ra_nom	187.27676746454	Nominal RA [deg]
dec_nom	2.0542338286471	Nominal Dec [deg]
roll_nom	245.84742800936	Nominal Roll [deg]
revision	4	Processing version of data
ontime	27798.400025874	Sum of GTIs [s]
livetime	27446.39994656	Livetime [s]
ontime4	27795.159065634	Sum of GTIs [s]
ontime5	27798.400025874	Sum of GTIs [s]
ontime6	27795.159095556	Sum of GTIs [s]
ontime7	27798.400025874	Sum of GTIs [s]
ontime8	27798.400025874	Sum of GTIs [s]
ontime9	27798.400025874	Sum of GTIs [s]
l2events	456888	Number of level 2 events



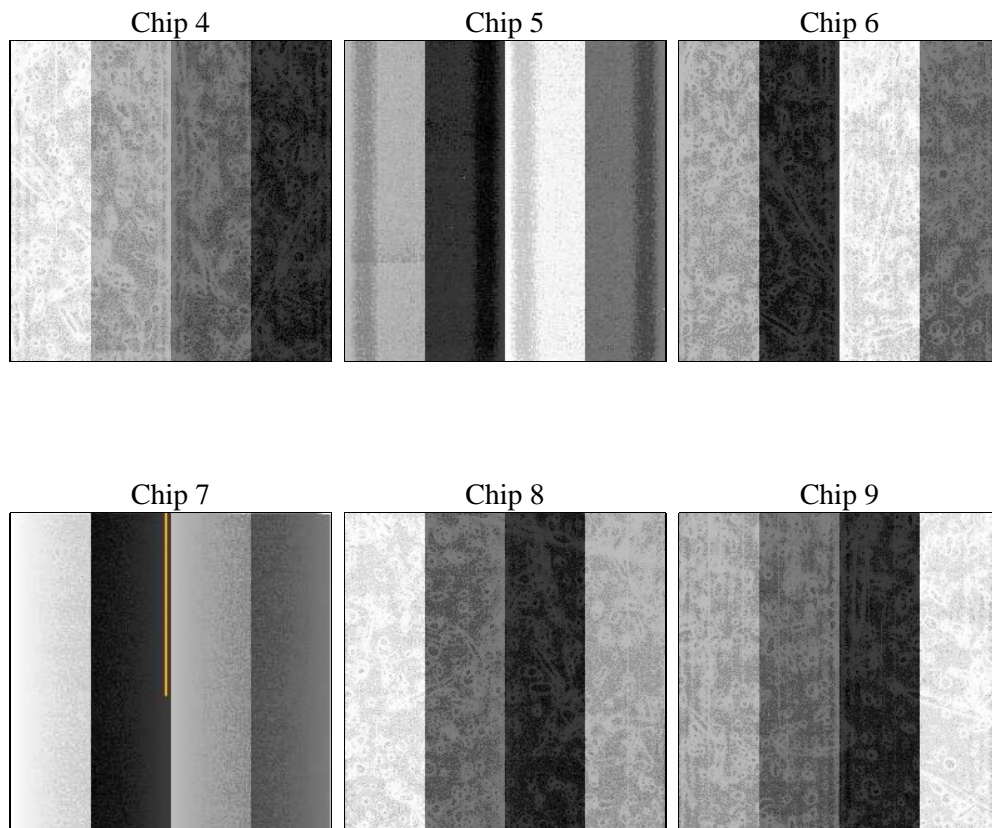
2 OBI

2.1 OBI

2.1.1 Images



2.1.2 Bias



2.1.3 Parameters

obi_num	1	Obi number	sched_exp_time	28000.000000	[s] Scheduled observation exposure time
ascdsver	8.4.5	Processing system revision	ontime	27798.400025874	Sum of GTIs [s]
caldbver	4.5.1.1	 	ontime4	27795.159065634	Sum of GTIs [s]
date	2012-08-29T08:23:54	Date and time of file creation	ontime5	27798.400025874	Sum of GTIs [s]
revision	4	Processing version of data	ontime6	27795.159095556	Sum of GTIs [s]
			ontime7	27798.400025874	Sum of GTIs [s]
			ontime8	27798.400025874	Sum of GTIs [s]
			ontime9	27798.400025874	Sum of GTIs [s]
			l1events	1402224	Number of level 1 events

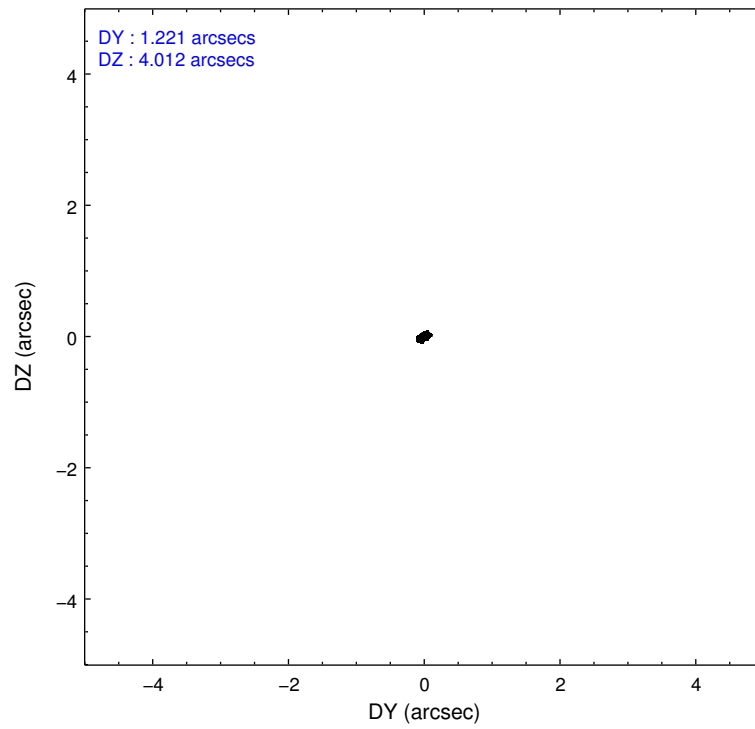
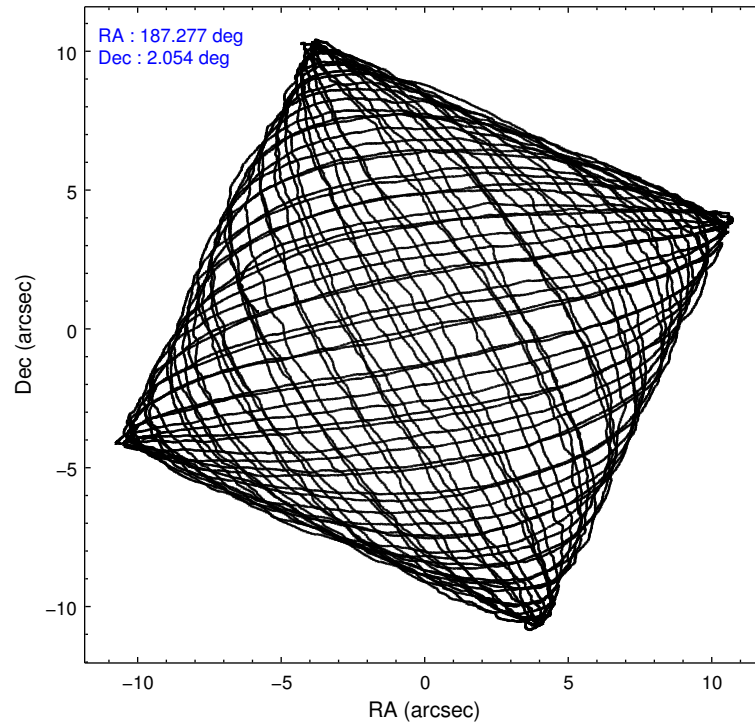
2.1.4 Events

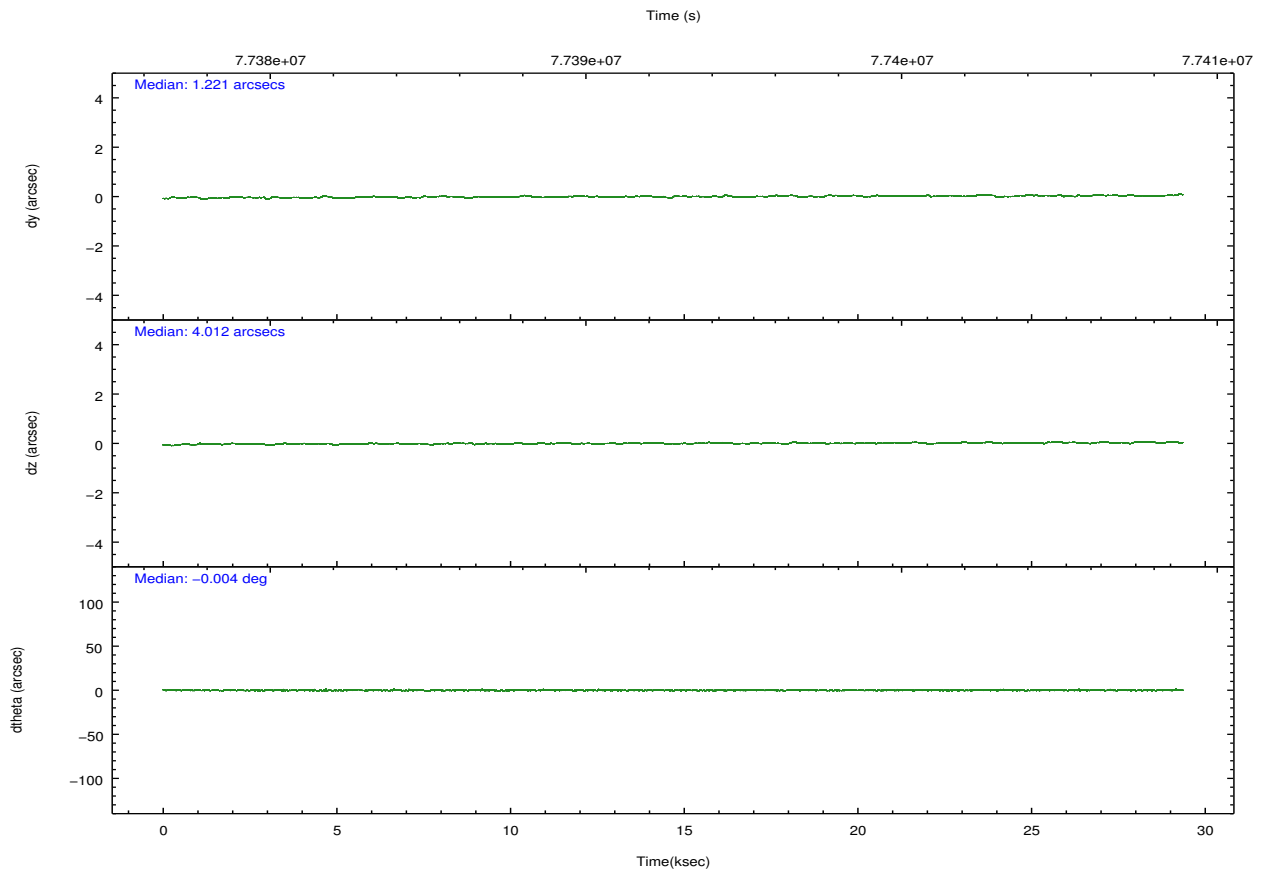
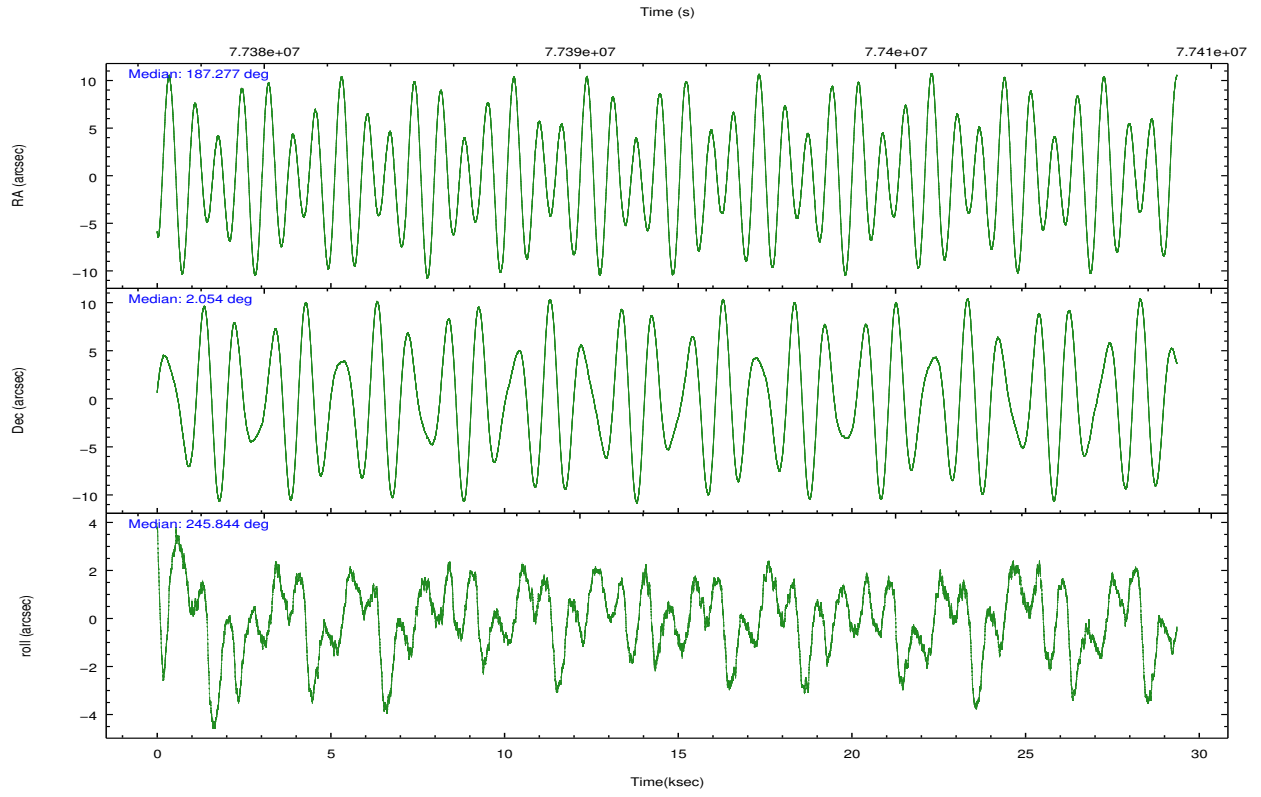
	ccd 4	ccd 5	ccd 6	ccd 7	ccd 8	ccd 9		ccd 4	ccd 5	ccd 6	ccd 7	ccd 8	ccd 9
level 1 events	197615	297727	177881	331956	222212	174833	grade 0 events	11822	31335	13872	35272	19548	11675
rejected events	173102	123967	151488	123000	170487	150790		5%	10%	7%	10%	8%	6%
rejected %	87%	41%	85%	37%	76%	86%	grade 1 events	102	308	94	783	131	75
								0%	0%	0%	0%	0%	0%
							grade 2 events	5450	46412	4698	42722	9893	4576
								2%	15%	2%	12%	4%	2%
							grade 3 events	1940	9792	2051	19384	5903	2021
								0%	3%	1%	5%	2%	1%
							grade 4 events	1817	9464	2022	19214	5367	1880
								0%	3%	1%	5%	2%	1%
							grade 5 events	5589	18372	6601	21541	8220	6578
								2%	6%	3%	6%	3%	3%
							grade 6 events	3490	76792	3753	92411	11015	3893
								1%	25%	2%	27%	4%	2%
							grade 7 events	167405	105252	144790	100629	162135	144135
								84%	35%	81%	30%	72%	82%

2.2 Compared Parameters

Parameter	Planned	Actual	Parameter	Planned	Actual
Instrument	ACIS	ACIS	Obspar format version number	7	7
Detector	ACIS-456789	ACIS-456789	Obspar file type	PREDICTED	ACTUAL
Grating	NONE	NONE	Obspar update status	NONE	UPDATED
Data mode	FAINT	FAINT	Number of optional ACIS chips dropped	0	0
Observation mode	POINTING	POINTING	On-chip summing requested	N	N
[deg] Pointing RA	187.273858	187.2767674645436	Subarray requested	NONE	NONE
[deg] Pointing Dec	2.081473	2.054233828647068	Alternating exposures requested	N	N
[deg] Pointing Roll	245.690902	245.847428009364	[s] Primary exposure time	0.000000	3.2
[mm] SIM focus pos	-0.684267	-0.6828225247311905			
[mm] SIM defocus	0	0.001444936568705701			
[mm] SIM translation stage pos	-187.132523	-187.1228876879999			
[mm] SIM translation stage offset	-3	-3.009634895007935			
[s] Observation start time (MET)	77379437.184000	77377470.949928			
Observation start date	2000-06-14T14:16:13	2000-06-14T13:44:30			
[s] Observation end time (MET)	77407437.184000	77408016.463553			
Observation end date	2000-06-14T22:02:53	2000-06-14T22:13:36			
Read mode	TIMED	TIMED			

2.3 Aspect



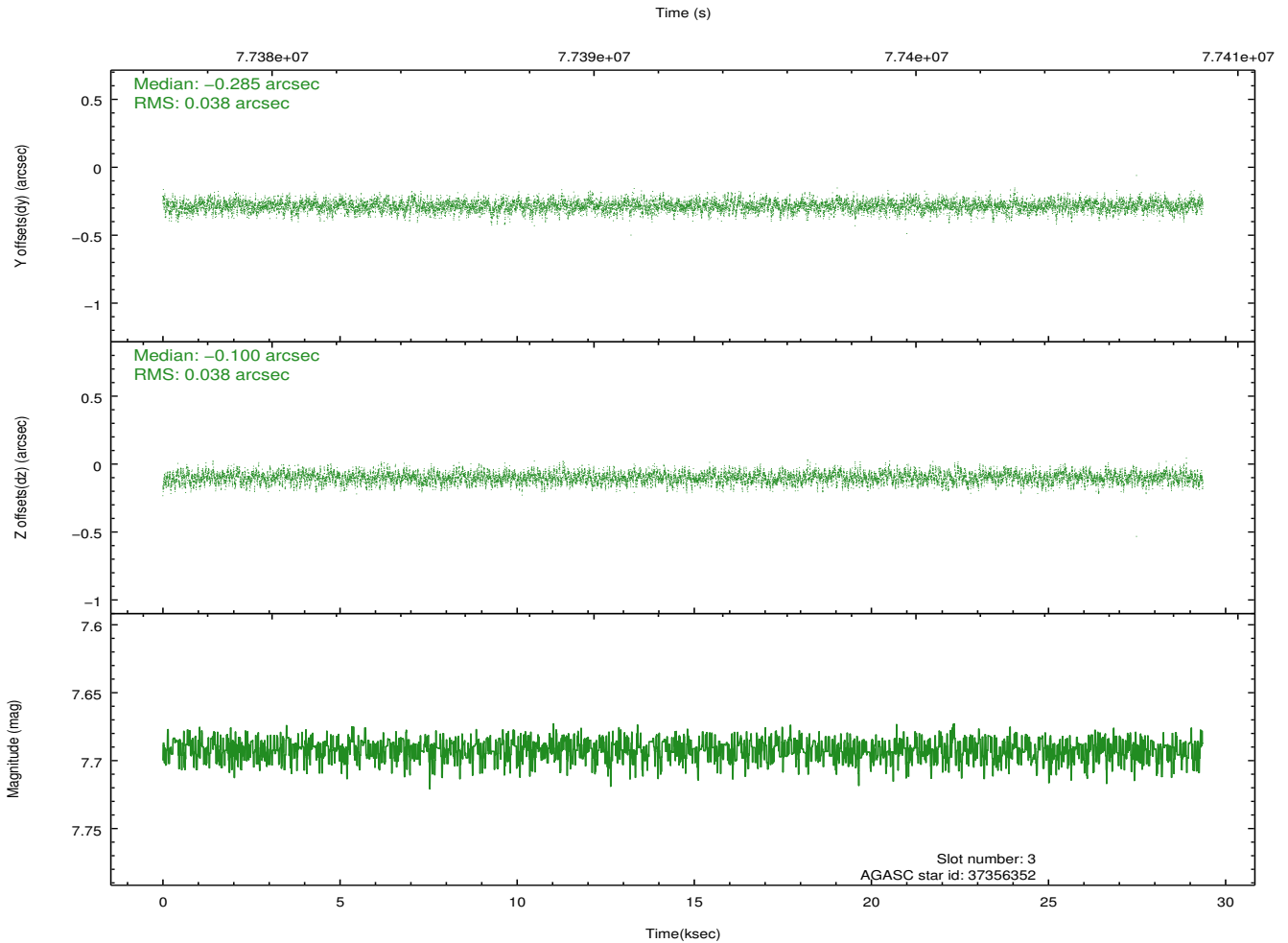
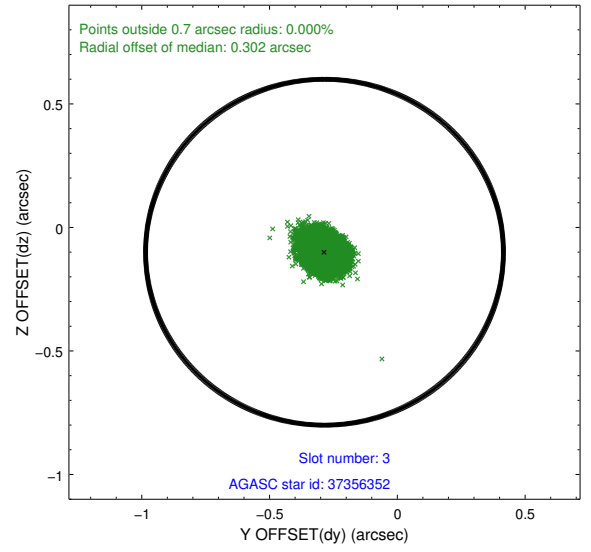
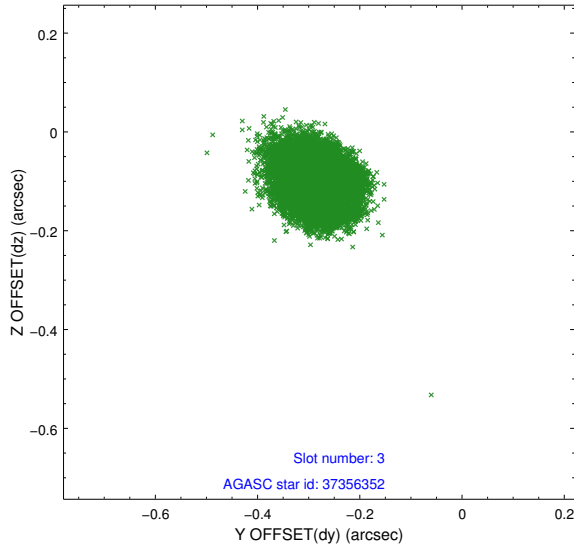


Slot Statistics

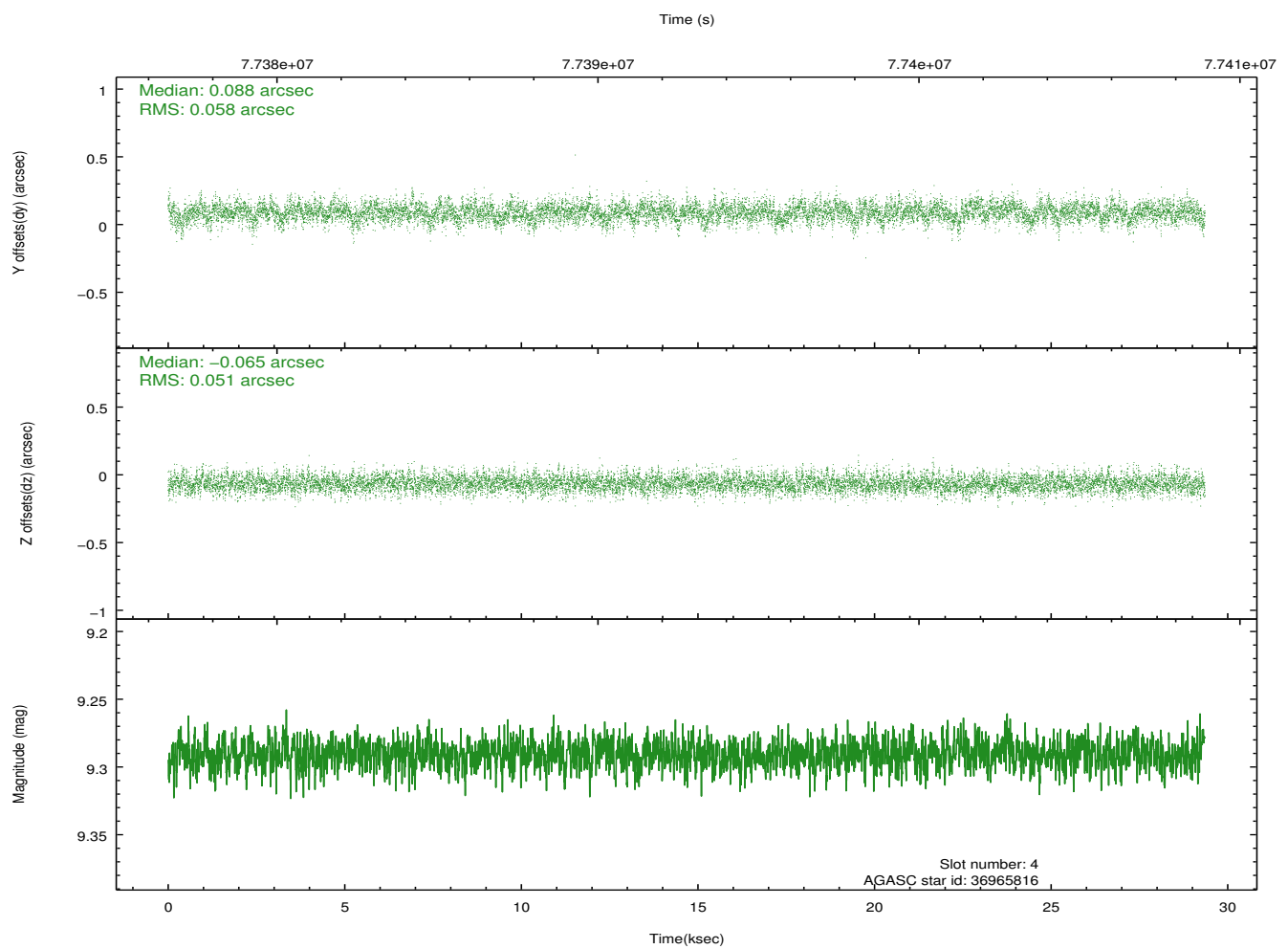
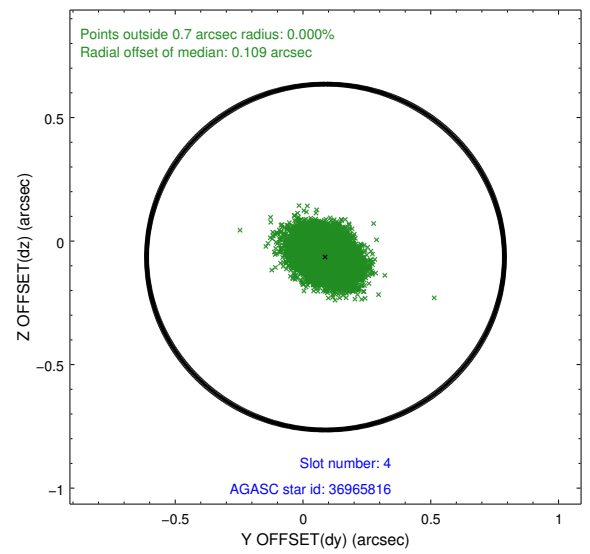
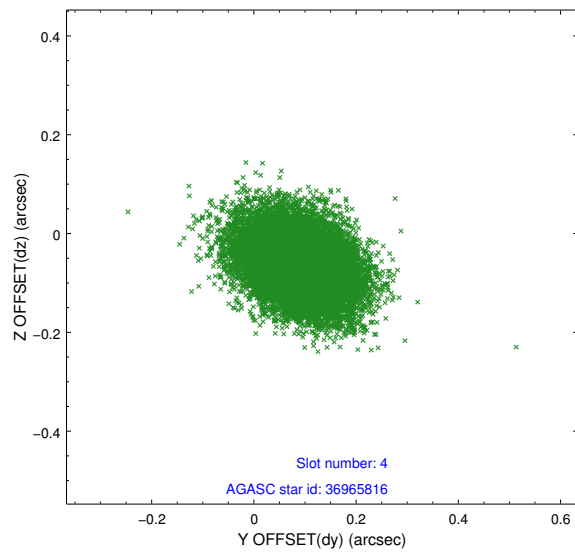
slot	status	id	mag	n_pts	med_dy	med_dz	dr1	dr2	ra	dec	mean_y	mean_z
0	FID	ACIS-S-2	7.11	7158	-0.052	-0.027	0.006	0.011	0.000000	0.000000	-753.66	-1787.26
1	FID	ACIS-S-4	7.20	7159	0.007	0.032	0.005	0.010	0.000000	0.000000	2159.64	121.19
2	FID	ACIS-S-5	7.23	7161	0.014	0.003	0.006	0.011	0.000000	0.000000	-1806.33	114.92
3	GUIDE	37356352	7.69	14320	-0.285	-0.100	0.057	0.093	187.433784	2.618460	-1998.11	-271.97
4	GUIDE	36965816	9.29	14312	0.088	-0.065	0.080	0.136	186.823353	1.771455	1684.96	-1018.07
5	GUIDE	36965296	9.09	14320	0.109	-0.074	0.075	0.126	186.926292	1.837429	1316.35	-778.28
6	GUIDE	37883040	10.04	14315	0.330	0.182	0.123	0.202	187.575516	1.280402	2182.24	2176.84
7	GUIDE	37880408	10.07	14254	-0.243	0.055	0.123	0.200	187.758191	2.290324	-1402.14	1278.14

2.4 Star Slots

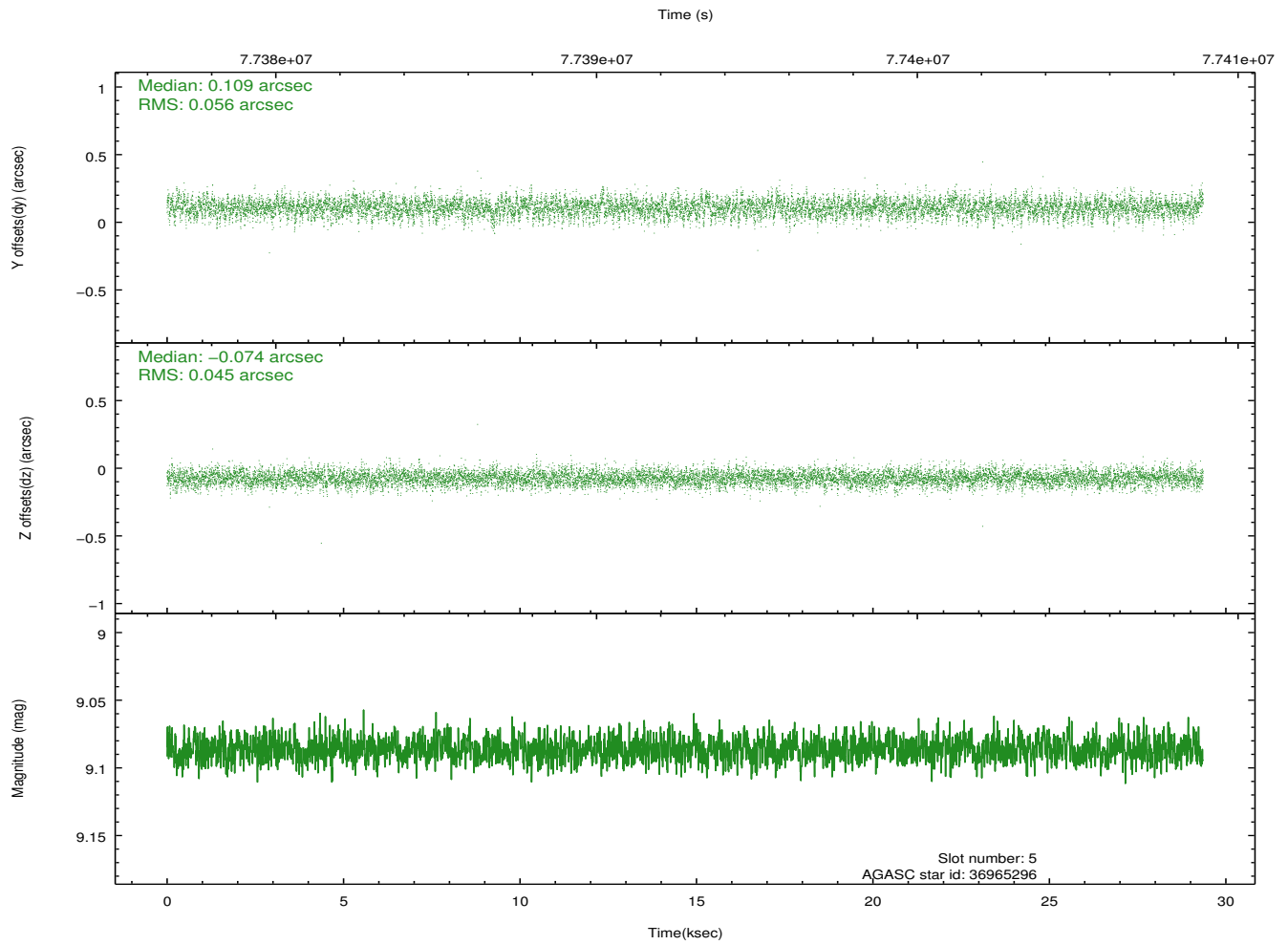
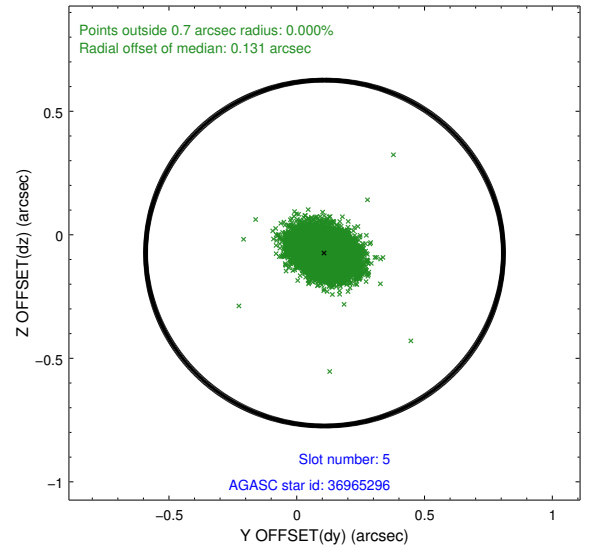
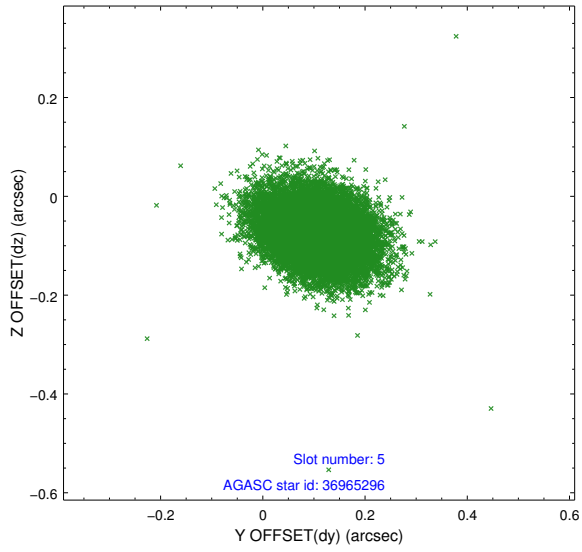
2.4.1 Slot 3



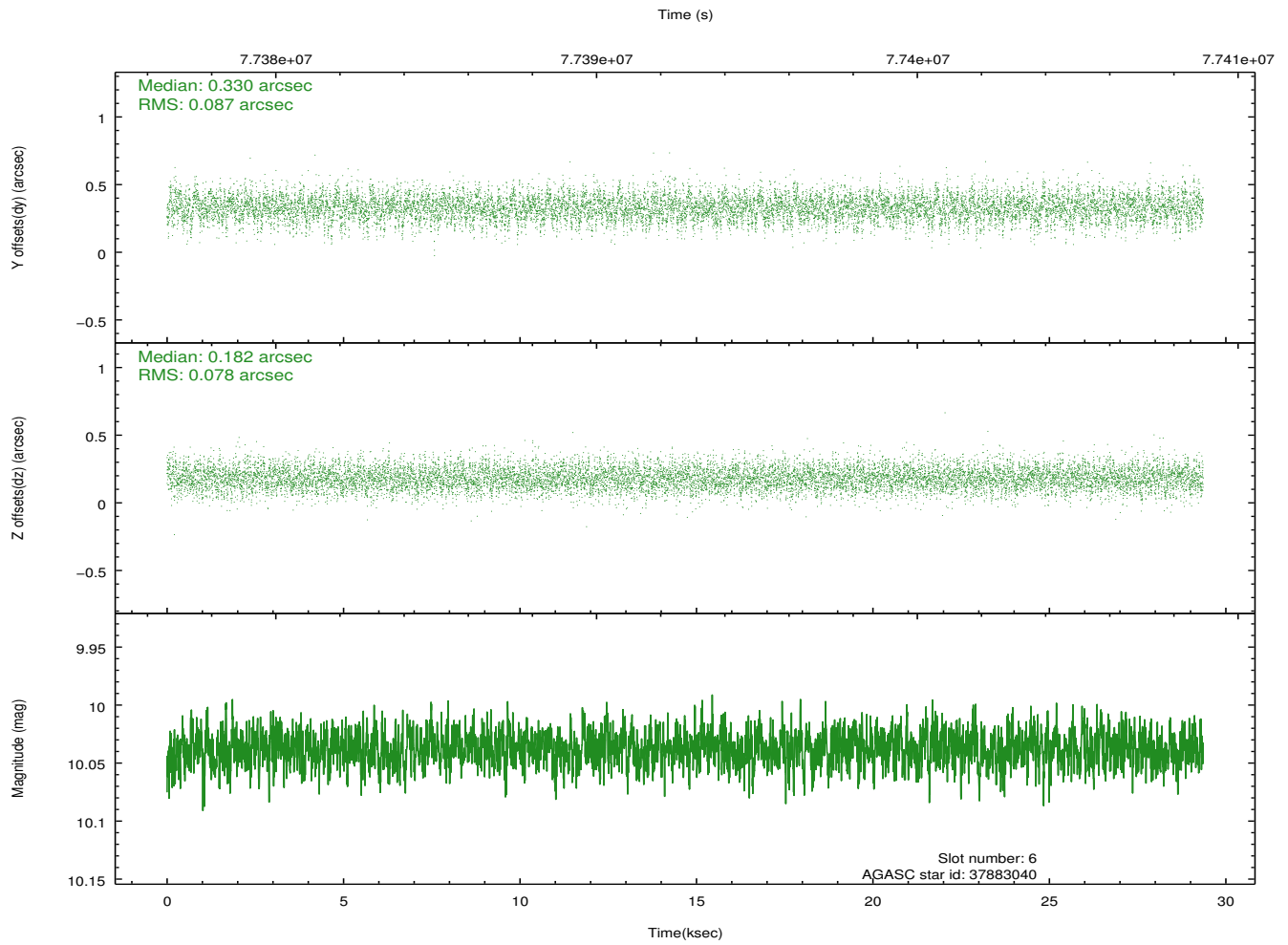
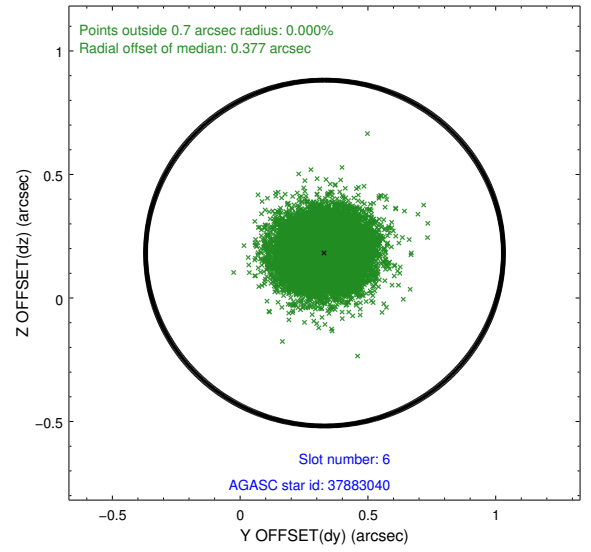
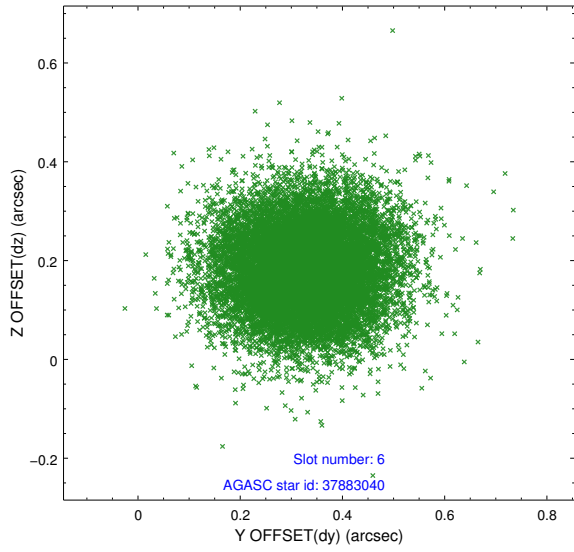
2.4.2 Slot 4



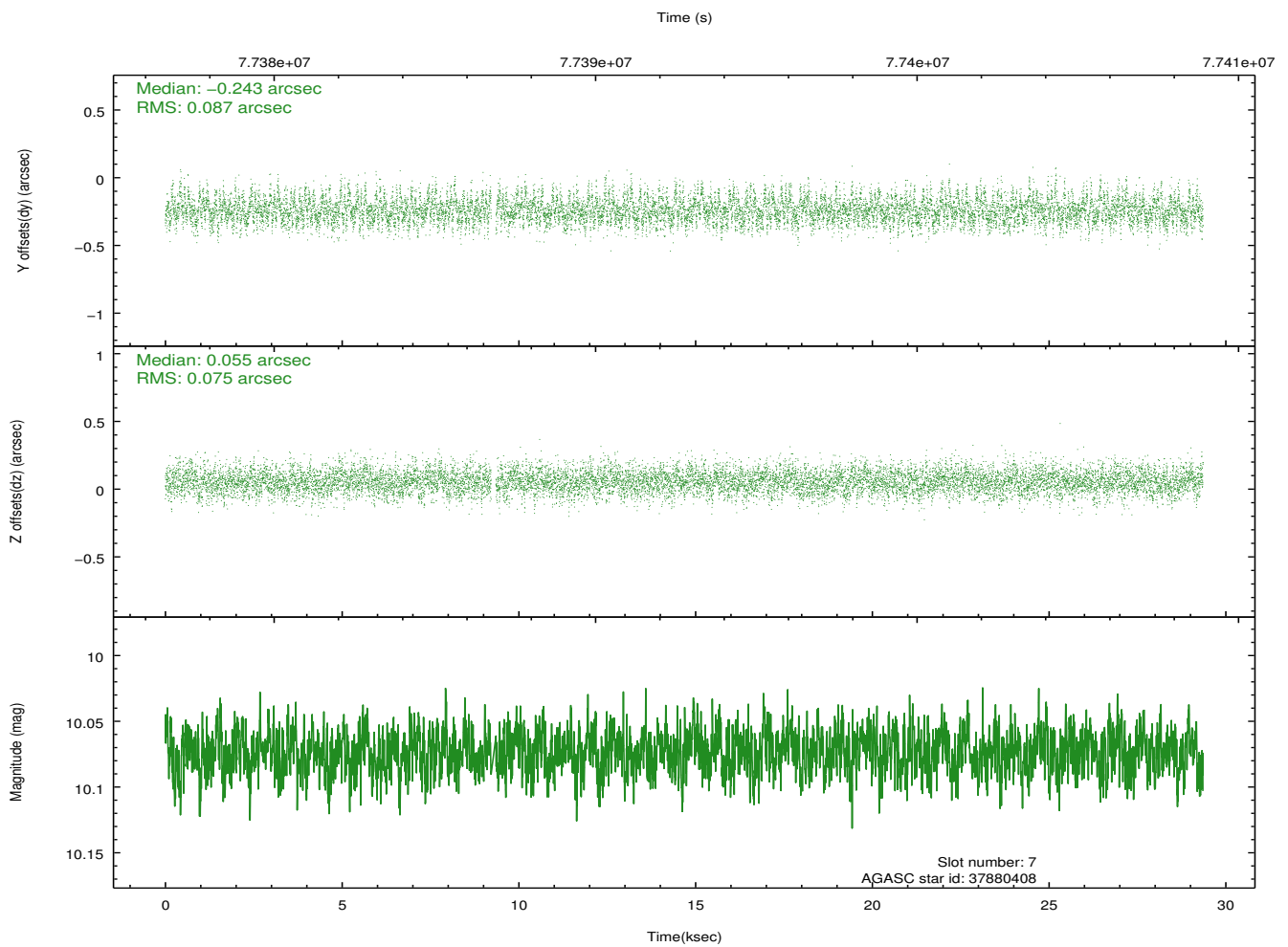
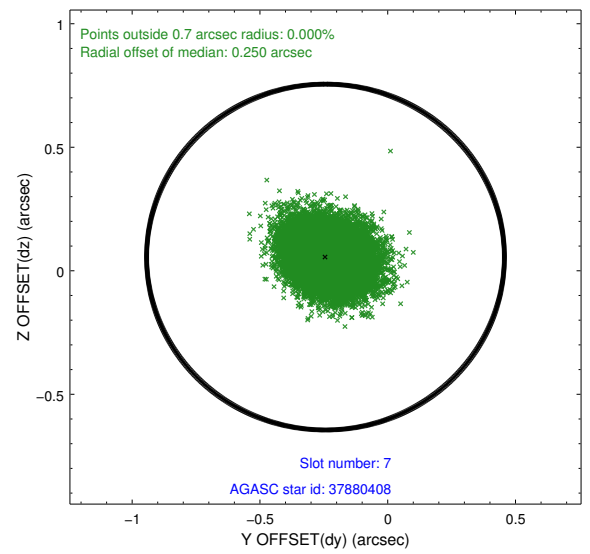
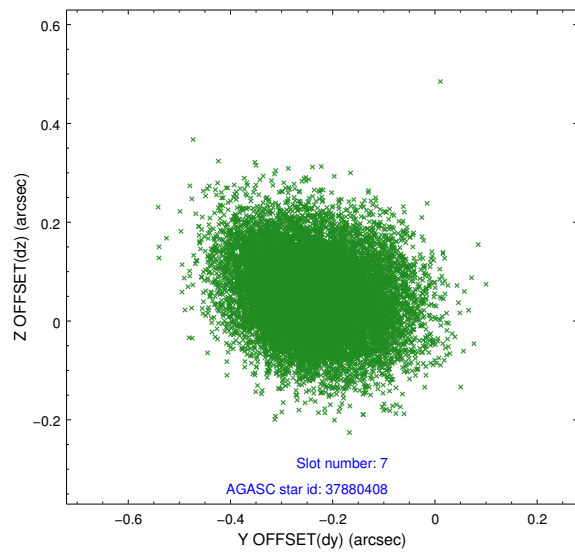
2.4.3 Slot 5



2.4.4 Slot 6

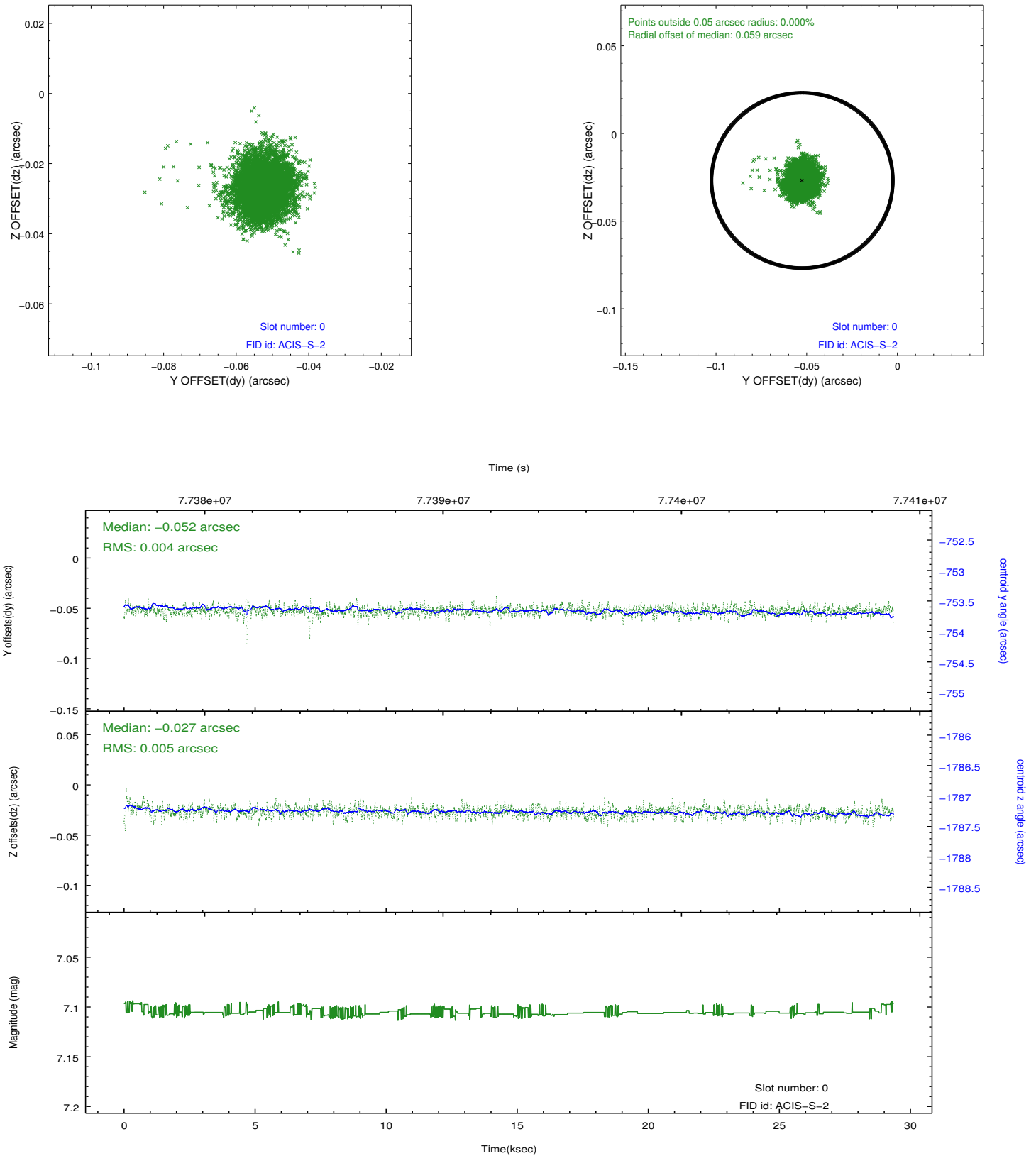


2.4.5 Slot 7

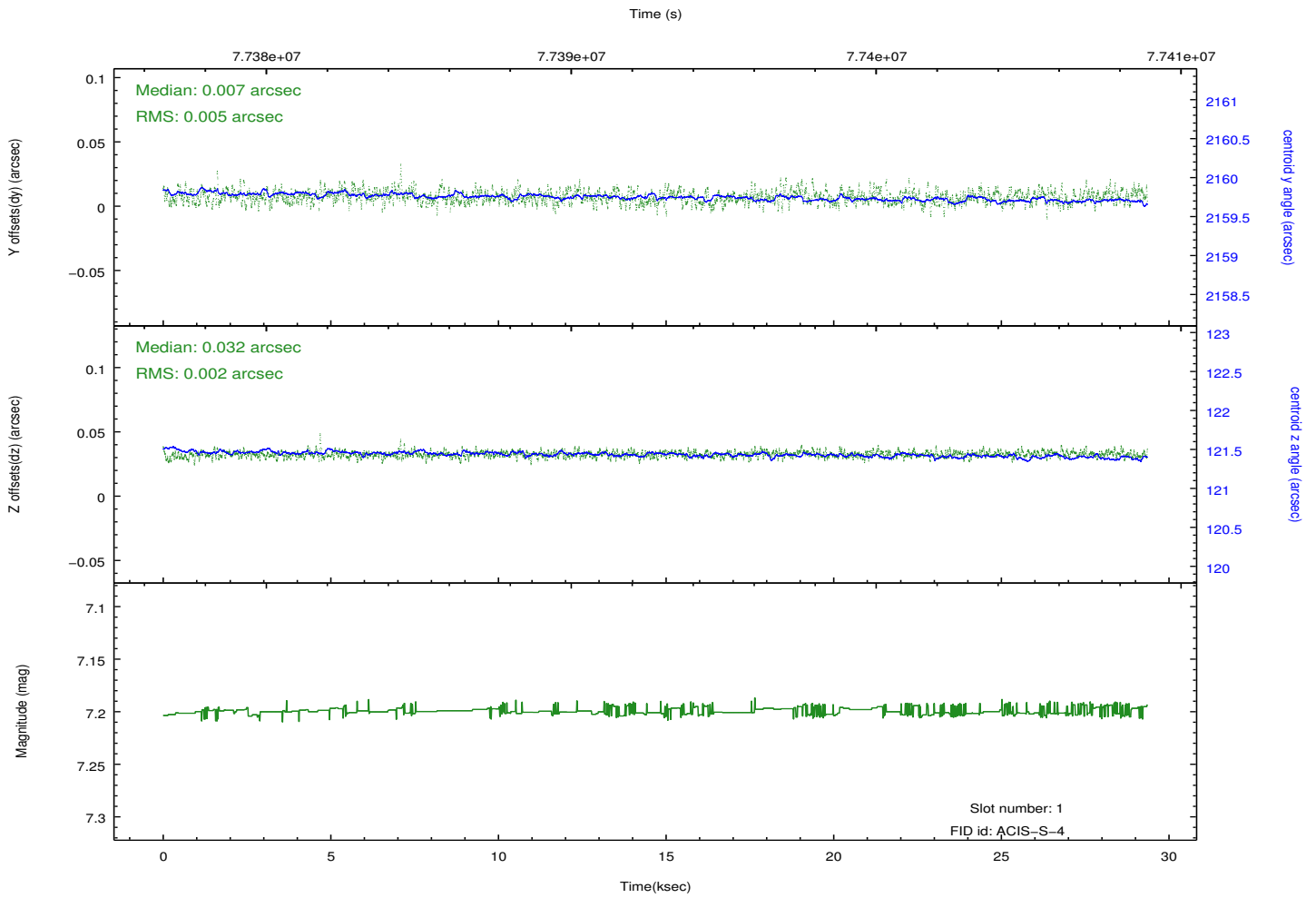
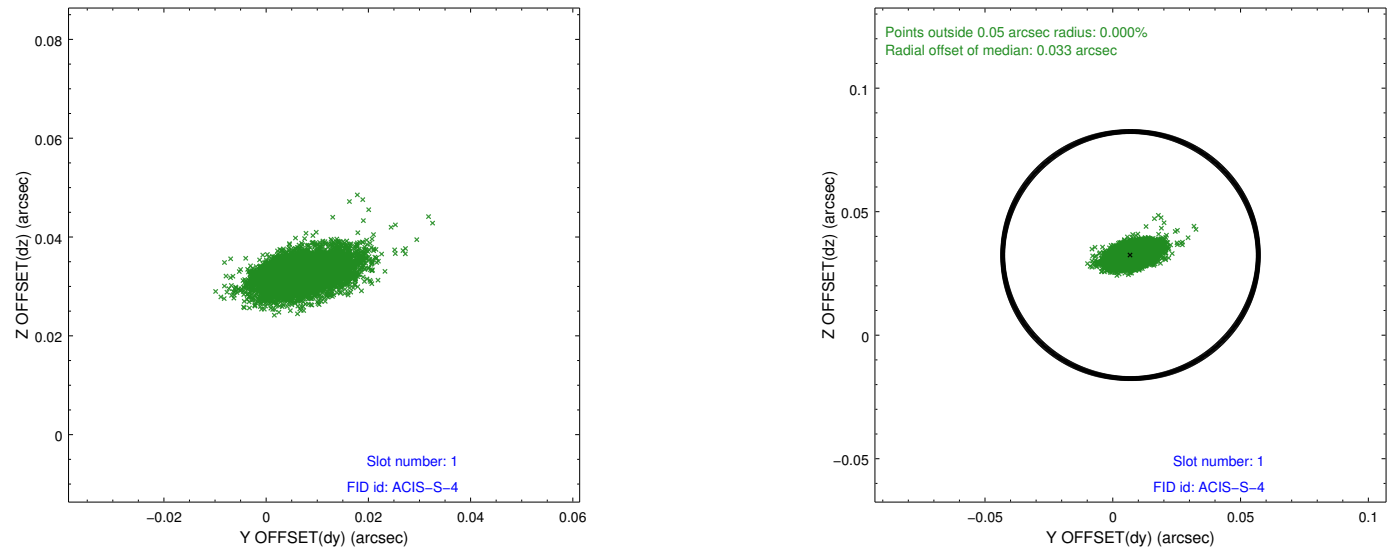


2.5 FID Slots

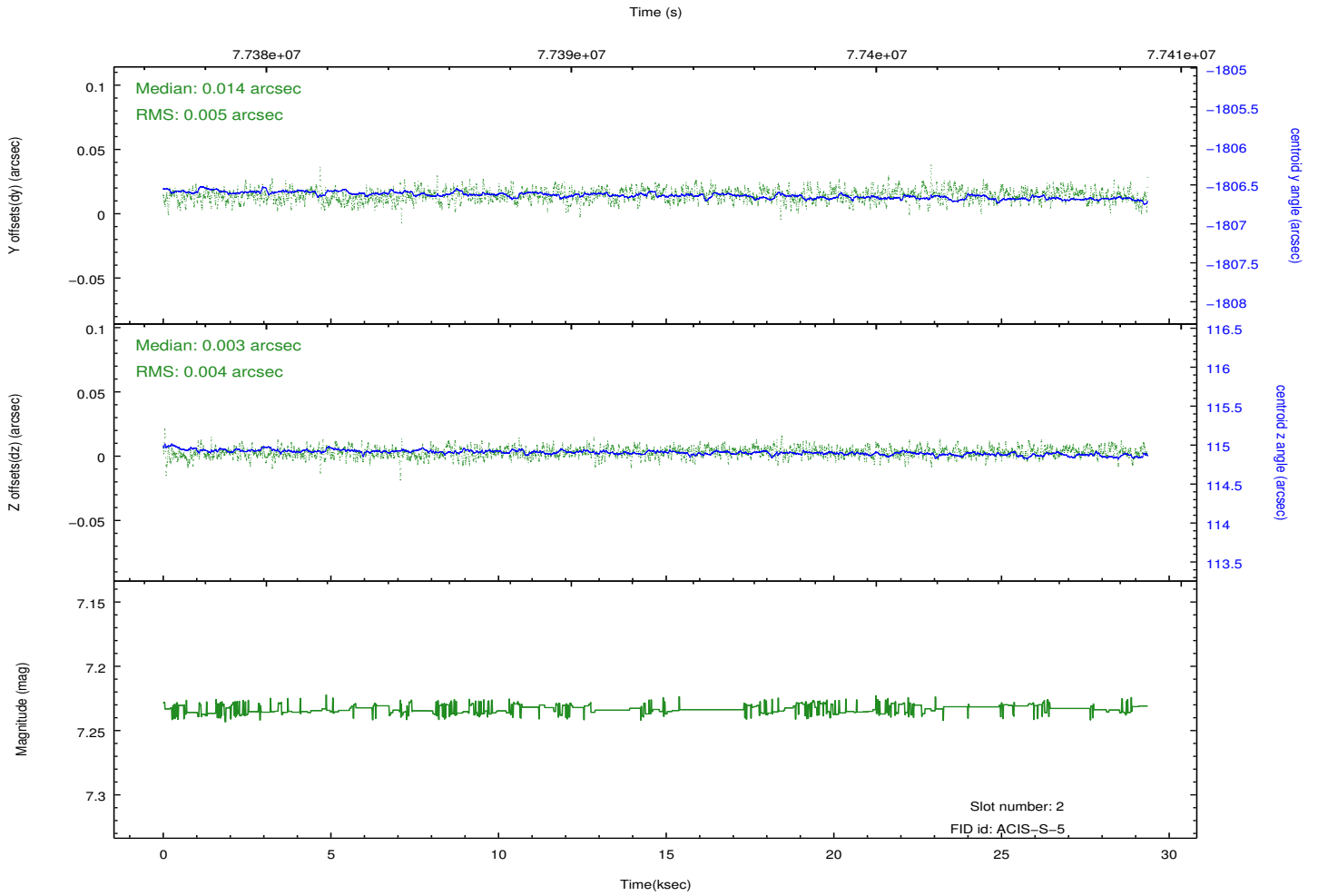
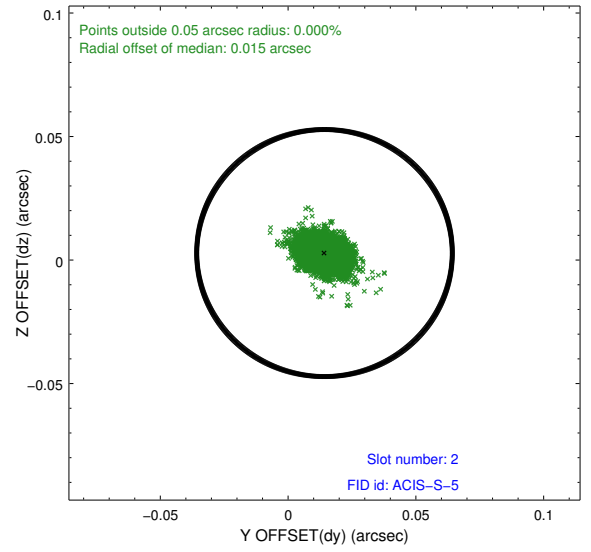
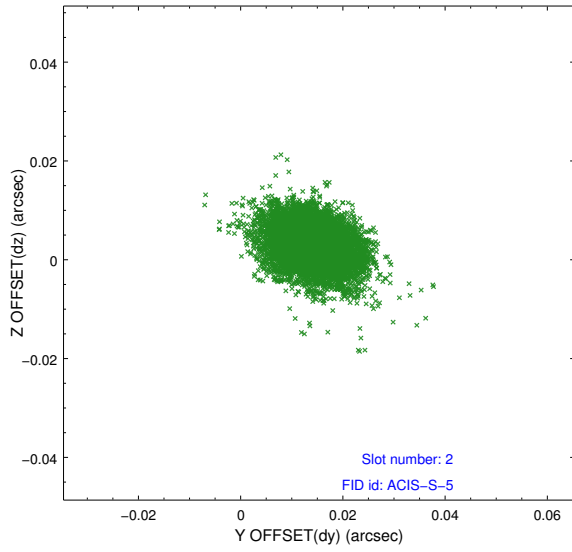
2.5.1 Slot 0



2.5.2 Slot 1



2.5.3 Slot 2



A Summary

A.1 Status

V&V Scientist	Jen Lauer
V&V Date (YYYY-MM-DD)	2012.09.04
V&V Edition	1
V&V Disposition and Status	OK
V&V Charge Time	27.804

A.2 Comments

Gratings insertion failure: this observation was originally intended to be LETG.