

# V&V Reference Report

## L2 ASCDS Version : 8.4.5

Observation 1722 - L2 Version 4  
Chandra X-Ray Center

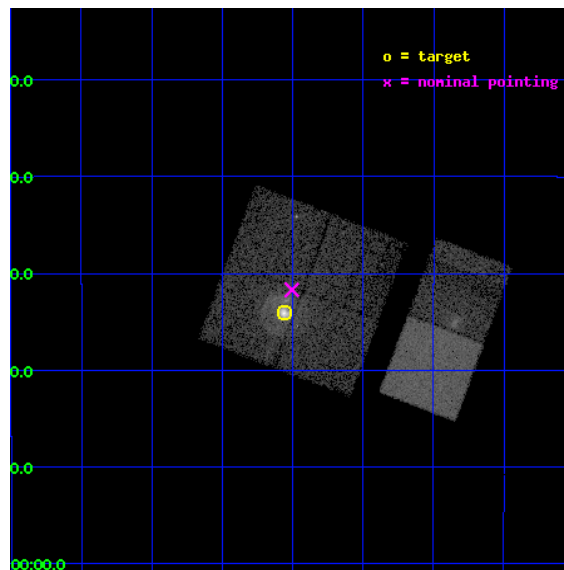
L2 Processing Date : Aug 28 2012

## Contents

<b>1</b>	<b>Front</b>	<b>2</b>
<b>2</b>	<b>OBI</b>	<b>3</b>
2.1	OBI . . . . .	3
2.1.1	Images . . . . .	3
2.1.2	Bias . . . . .	3
2.1.3	Parameters . . . . .	4
2.1.4	Events . . . . .	4
2.2	Compared Parameters . . . . .	5
2.3	Aspect . . . . .	6
2.4	Star Slots . . . . .	9
2.4.1	Slot 3 . . . . .	9
2.4.2	Slot 4 . . . . .	10
2.4.3	Slot 5 . . . . .	11
2.4.4	Slot 6 . . . . .	12
2.4.5	Slot 7 . . . . .	13
2.5	FID Slots . . . . .	14
2.5.1	Slot 0 . . . . .	14
2.5.2	Slot 1 . . . . .	15
2.5.3	Slot 2 . . . . .	16
<b>A</b>	<b>Summary</b>	<b>17</b>
A.1	Status . . . . .	17
A.2	Comments . . . . .	17

# 1 Front

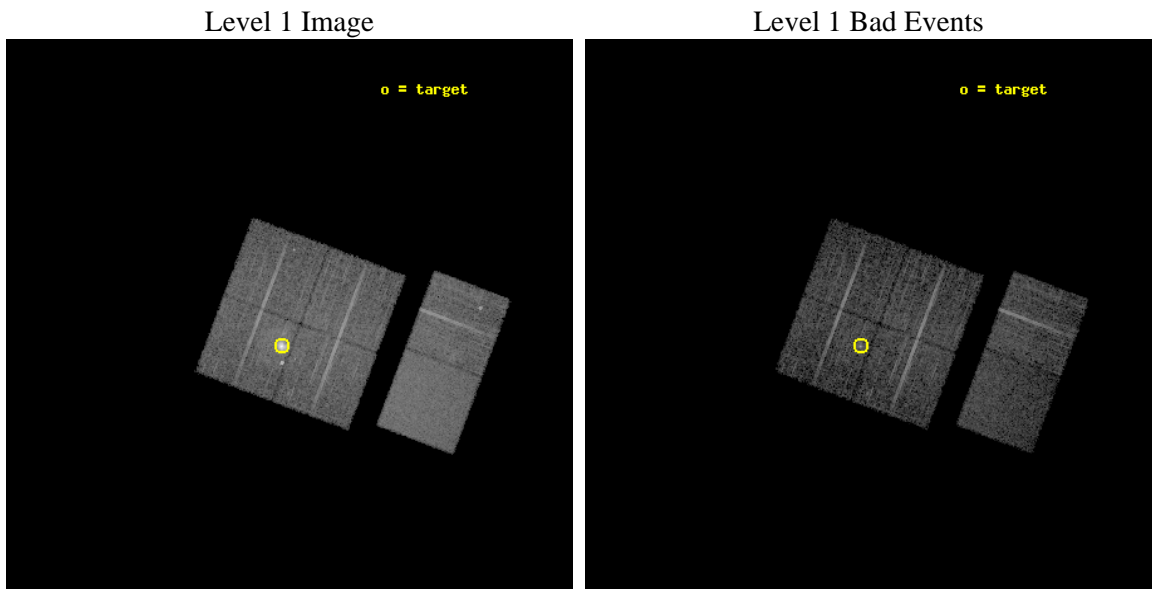
seq_num	590175	Sequence number
obs_id	1722	Observation id
title	HRC RESPONSE TO CONTINUUM SOURCE.	Proposal title
observer	Dr. CXC Calibration	Principal investigator
object	G21.5-0.9 [Chip I1, T=120, Offsets=-2,0,-1]	Source name
dtycycle	0	&#160
cycle	P	events from which exps? Prim/Second/Both
ra_targ	278.389583	Observer's specified target RA [deg]
dec_targ	-10.568528	Observer's specified target Dec [deg]
ra_nom	278.3763834701	Nominal RA [deg]
dec_nom	-10.528383606491	Nominal Dec [deg]
roll_nom	110.67179926179	Nominal Roll [deg]
revision	4	Processing version of data
ontime	7664.0000071228	Sum of GTIs [s]
livetime	7566.9538243258	Livetime [s]
ontime0	7664.0000071228	Sum of GTIs [s]
ontime1	7664.0000071228	Sum of GTIs [s]
ontime2	7664.0000071228	Sum of GTIs [s]
ontime3	7664.0000071228	Sum of GTIs [s]
ontime6	7664.0000071228	Sum of GTIs [s]
ontime7	7664.0000071228	Sum of GTIs [s]
l2events	89523	Number of level 2 events



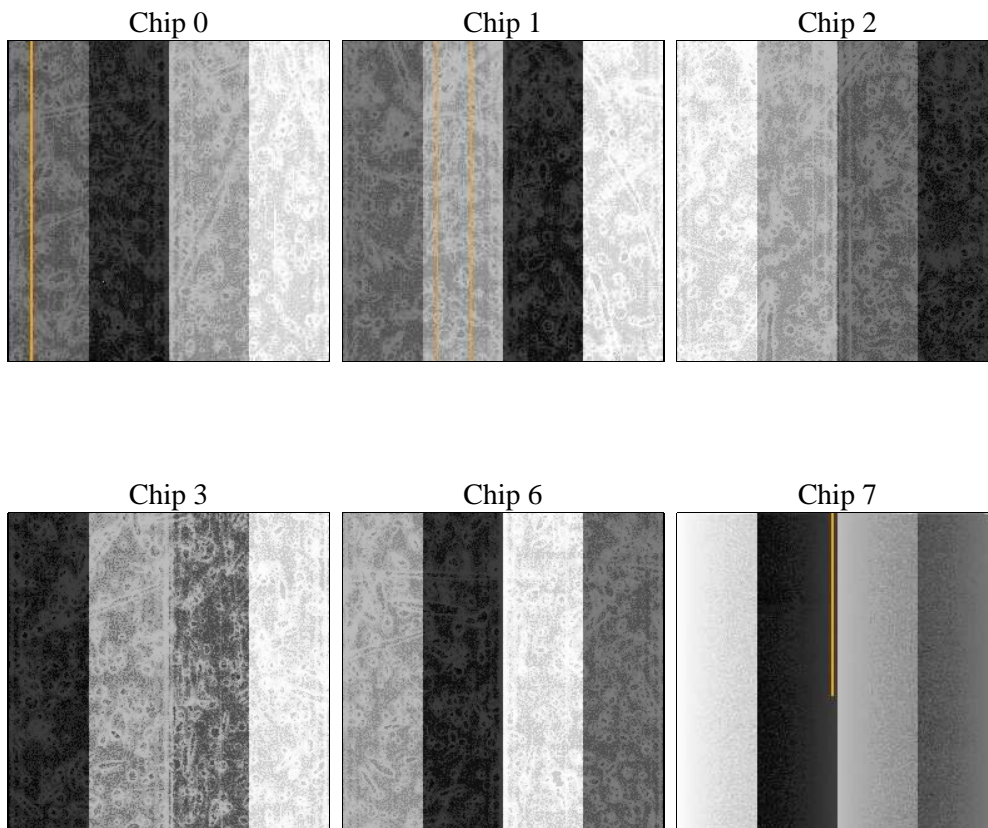
## 2 OBI

### 2.1 OBI

#### 2.1.1 Images



#### 2.1.2 Bias



### 2.1.3 Parameters

obi_num	0	Obi number	sched_exp_time	8000.000000	[s] Scheduled observation exposure time
ascdsver	8.4.5	Processing system revision	ontime	7664.0000071228	Sum of GTIs [s]
caldbver	4.5.1.1	&#160	ontime0	7664.0000071228	Sum of GTIs [s]
date	2012-08-28T04:40:13	Date and time of file creation	ontime1	7664.0000071228	Sum of GTIs [s]
revision	4	Processing version of data	ontime2	7664.0000071228	Sum of GTIs [s]
			ontime3	7664.0000071228	Sum of GTIs [s]
			ontime6	7664.0000071228	Sum of GTIs [s]
			ontime7	7664.0000071228	Sum of GTIs [s]
			l1events	339576	Number of level 1 events

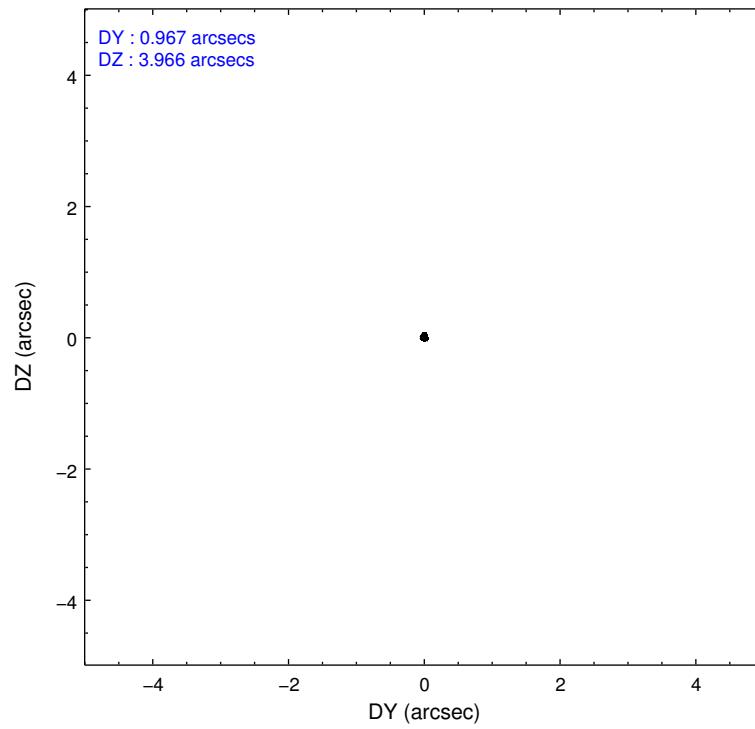
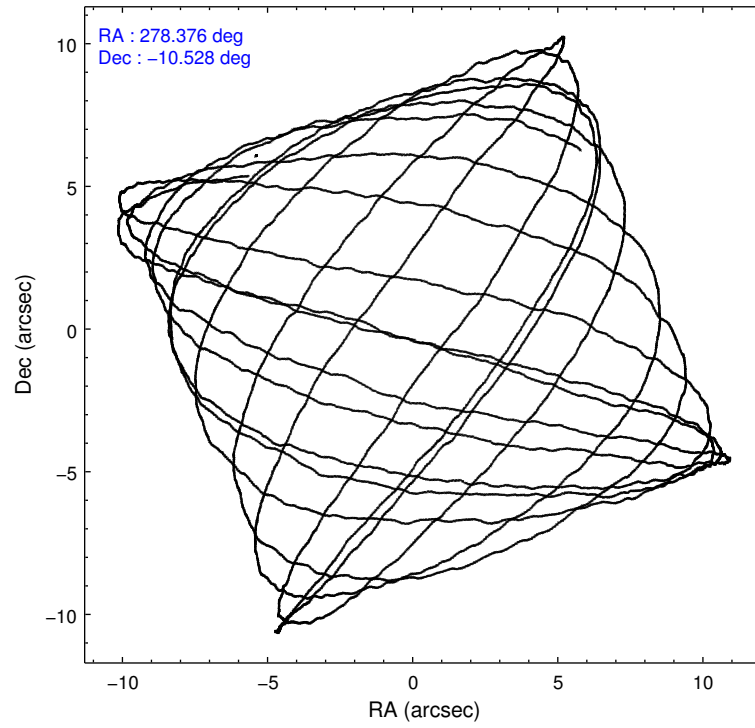
### 2.1.4 Events

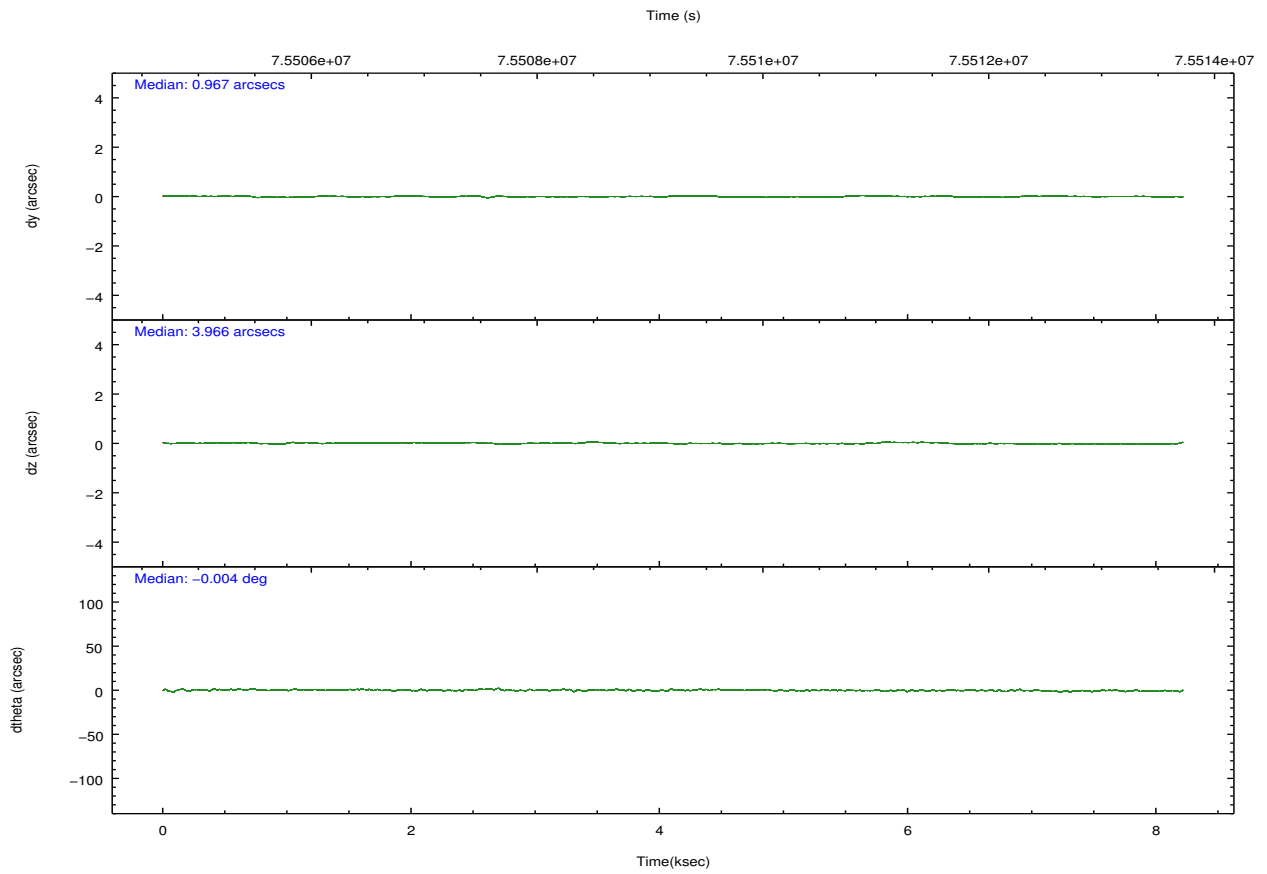
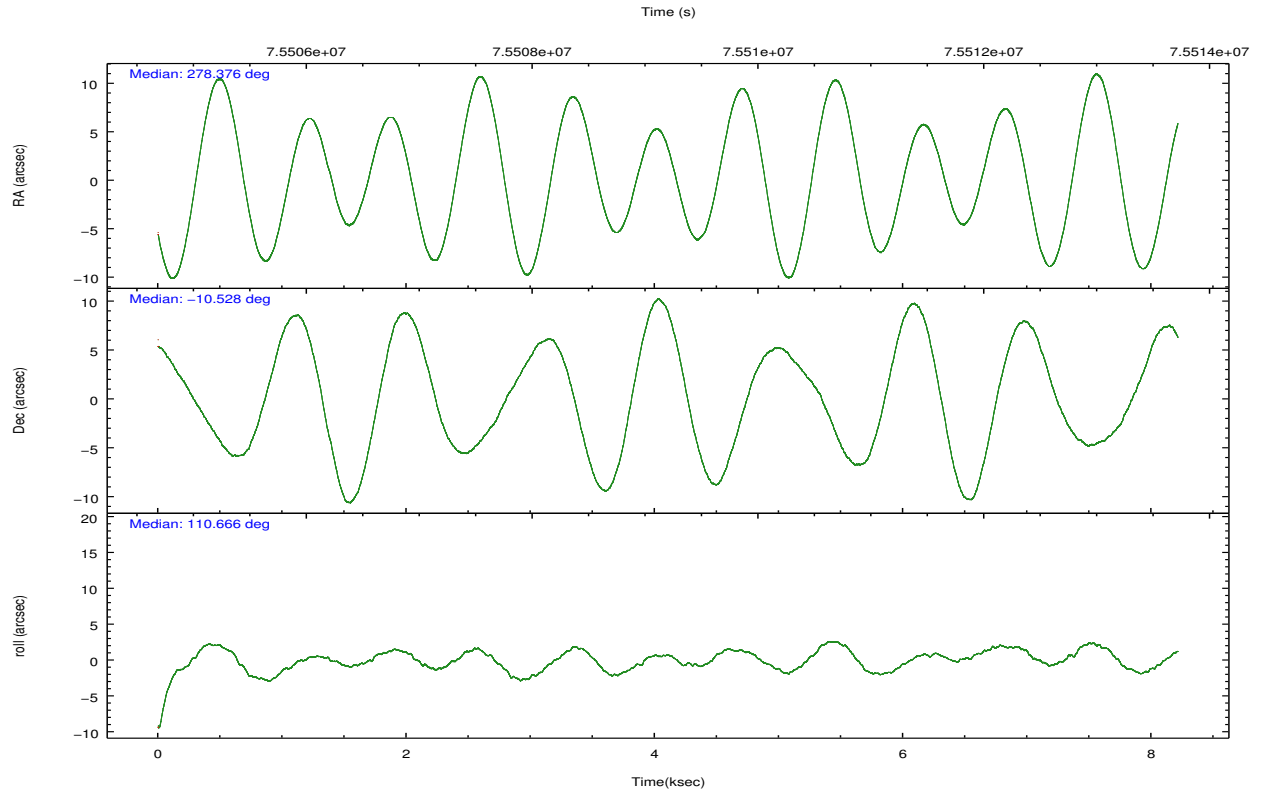
	ccd 0	ccd 1	ccd 2	ccd 3	ccd 6	ccd 7		ccd 0	ccd 1	ccd 2	ccd 3	ccd 6	ccd 7
level 1 events	46108	71721	52195	51901	54504	63147	grade 0 events	4491	22240	3786	4859	5290	3024
rejected events	37377	38593	44447	42736	44766	32863		9%	31%	7%	9%	9%	4%
rejected %	81%	53%	85%	82%	82%	52%	grade 1 events	38	219	25	26	32	64
								0%	0%	0%	0%	0%	0%
							grade 2 events	1850	4928	1689	1918	1912	5856
								4%	6%	3%	3%	3%	9%
							grade 3 events	591	1665	559	633	628	2628
								1%	2%	1%	1%	1%	4%
							grade 4 events	624	1664	559	614	614	2652
								1%	2%	1%	1%	1%	4%
							grade 5 events	1529	1797	1451	1598	1816	5424
								3%	2%	2%	3%	3%	8%
							grade 6 events	1175	2651	1161	1144	1295	16138
								2%	3%	2%	2%	2%	25%
							grade 7 events	35810	36557	42965	41109	42917	27361
								77%	50%	82%	79%	78%	43%

## 2.2 Compared Parameters

Parameter	Planned	Actual	Parameter	Planned	Actual
Instrument	ACIS	ACIS	Obspar format version number	7	7
Detector	ACIS-012367	ACIS-012367	Obspar file type	PREDICTED	ACTUAL
Grating	NONE	NONE	Obspar update status	NONE	UPDATED
Data mode	FAINT	FAINT	Number of optional ACIS chips dropped	0	0
Observation mode	POINTING	POINTING	On-chip summing requested	N	N
[deg] Pointing RA	278.398045	278.3763834701019	Subarray requested	NONE	NONE
[deg] Pointing Dec	-10.546032	-10.52838360649123	Alternating exposures requested	N	N
[deg] Pointing Roll	110.467070	110.6717992617891	[s] Primary exposure time	0.000000	3.2
[mm] SIM focus pos	-0.782348	-0.7809083437167272			
[mm] SIM defocus	0	0.001439871863259334			
[mm] SIM translation stage pos	-238.277263	-238.2741181829365			
[mm] SIM translation stage offset	4.6848	4.681665180006831			
[s] Observation start time (MET)	75505315.184000	75504919.39351401			
Observation start date	2000-05-23T21:40:51	2000-05-23T21:35:19			
[s] Observation end time (MET)	75513315.184000	75513449.443827			
Observation end date	2000-05-23T23:54:11	2000-05-23T23:57:29			
Read mode	TIMED	TIMED			

## 2.3 Aspect



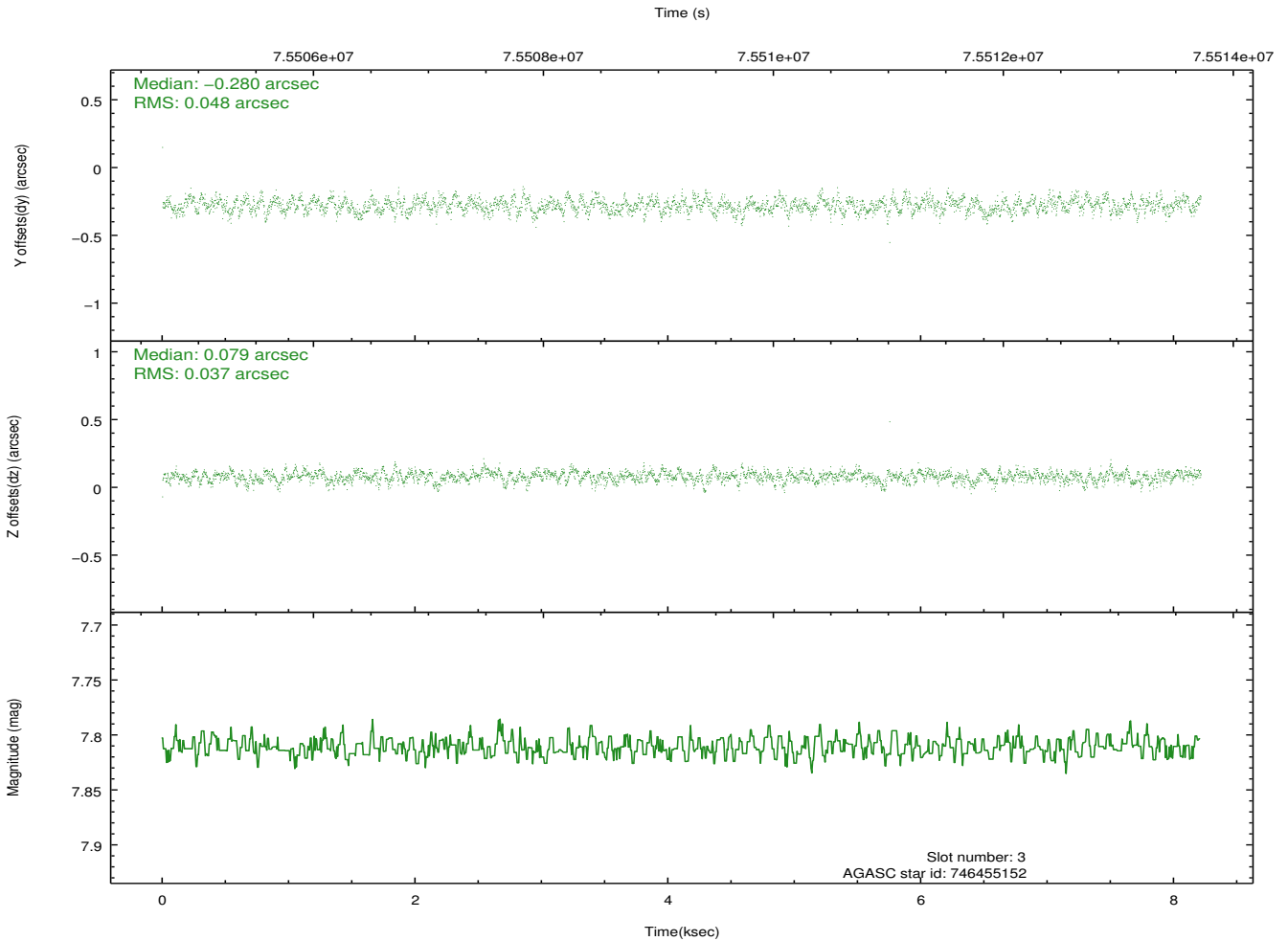
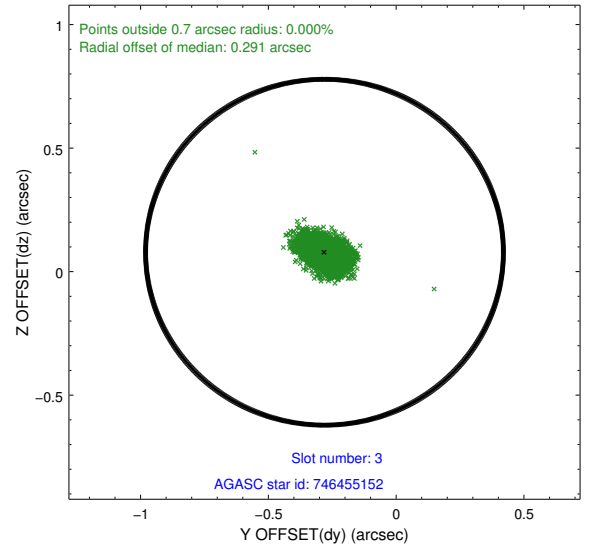
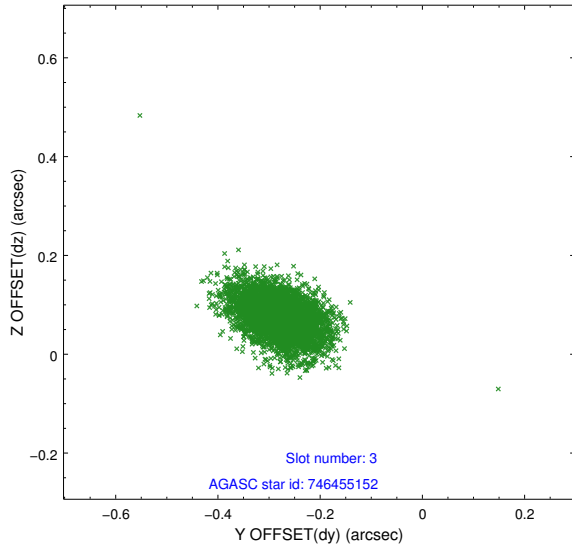


### Slot Statistics

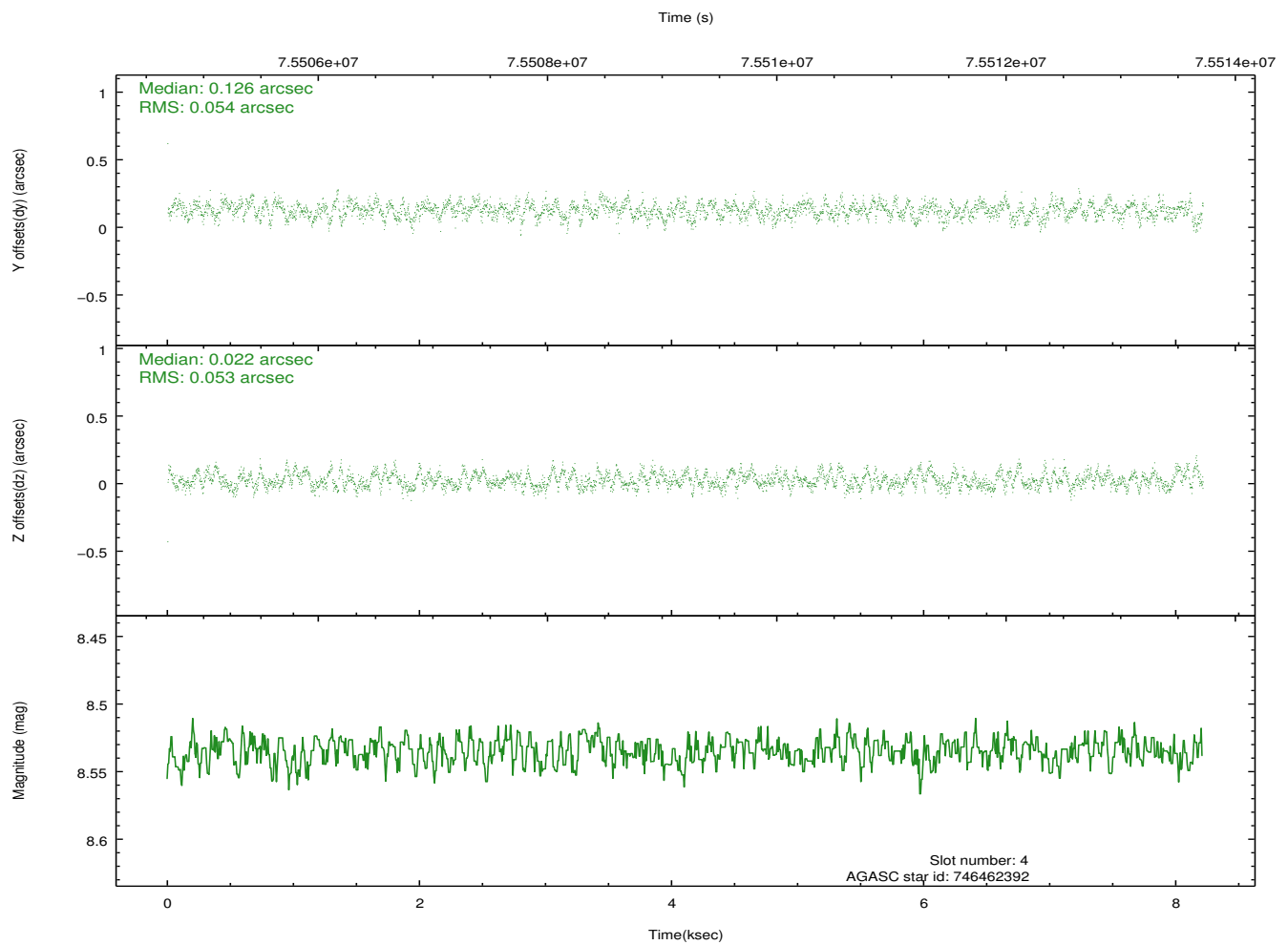
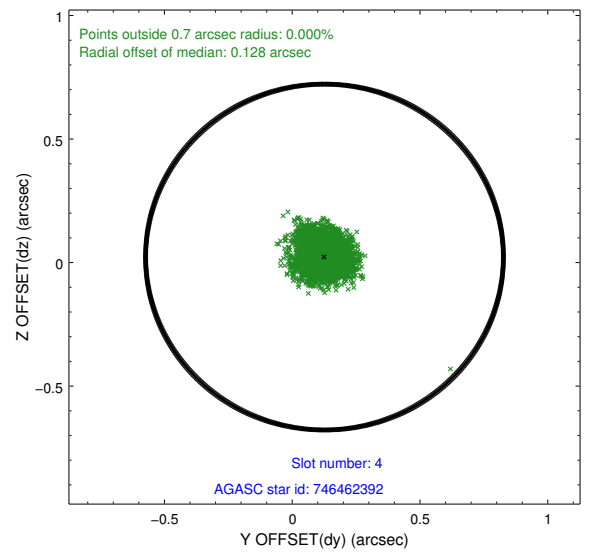
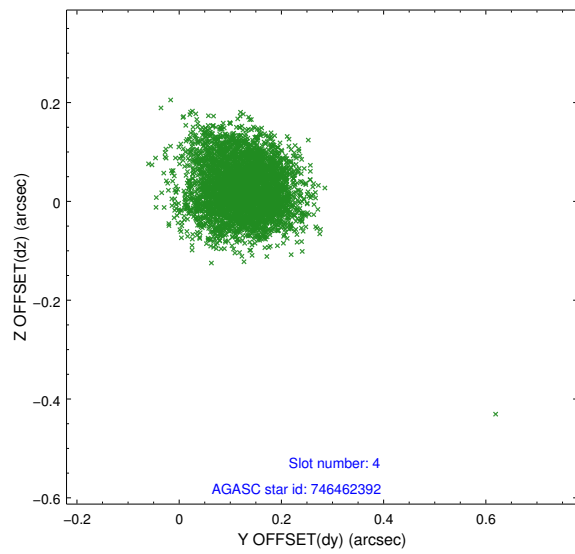
slot	status	id	mag	n_pts	med_dy	med_dz	dr1	dr2	ra	dec	mean_y	mean_z
0	FID	ACIS-I-2	7.16	2004	-0.060	-0.080	0.008	0.015	0.000000	0.000000	-754.99	-738.10
1	FID	ACIS-I-4	7.19	2004	-0.051	0.061	0.006	0.012	0.000000	0.000000	2158.73	1168.05
2	FID	ACIS-I-5	7.24	2004	0.010	0.088	0.009	0.014	0.000000	0.000000	-1808.18	1167.16
3	GUIDE	746455152	7.81	4008	-0.280	0.079	0.063	0.106	278.447893	-9.976732	1857.94	-882.54
4	GUIDE	746462392	8.53	4008	0.126	0.022	0.080	0.130	279.038421	-10.890715	-1955.86	-1687.24
5	GUIDE	746455112	8.93	4007	0.073	0.067	0.074	0.125	278.266531	-10.703234	-368.27	632.79
6	GUIDE	746460328	9.81	4004	-0.133	0.074	0.107	0.176	278.603974	-9.898096	1929.50	-1499.94
7	GUIDE	746995400	9.68	4004	0.220	-0.243	0.121	0.192	278.078957	-11.289885	-2115.19	1990.67

## 2.4 Star Slots

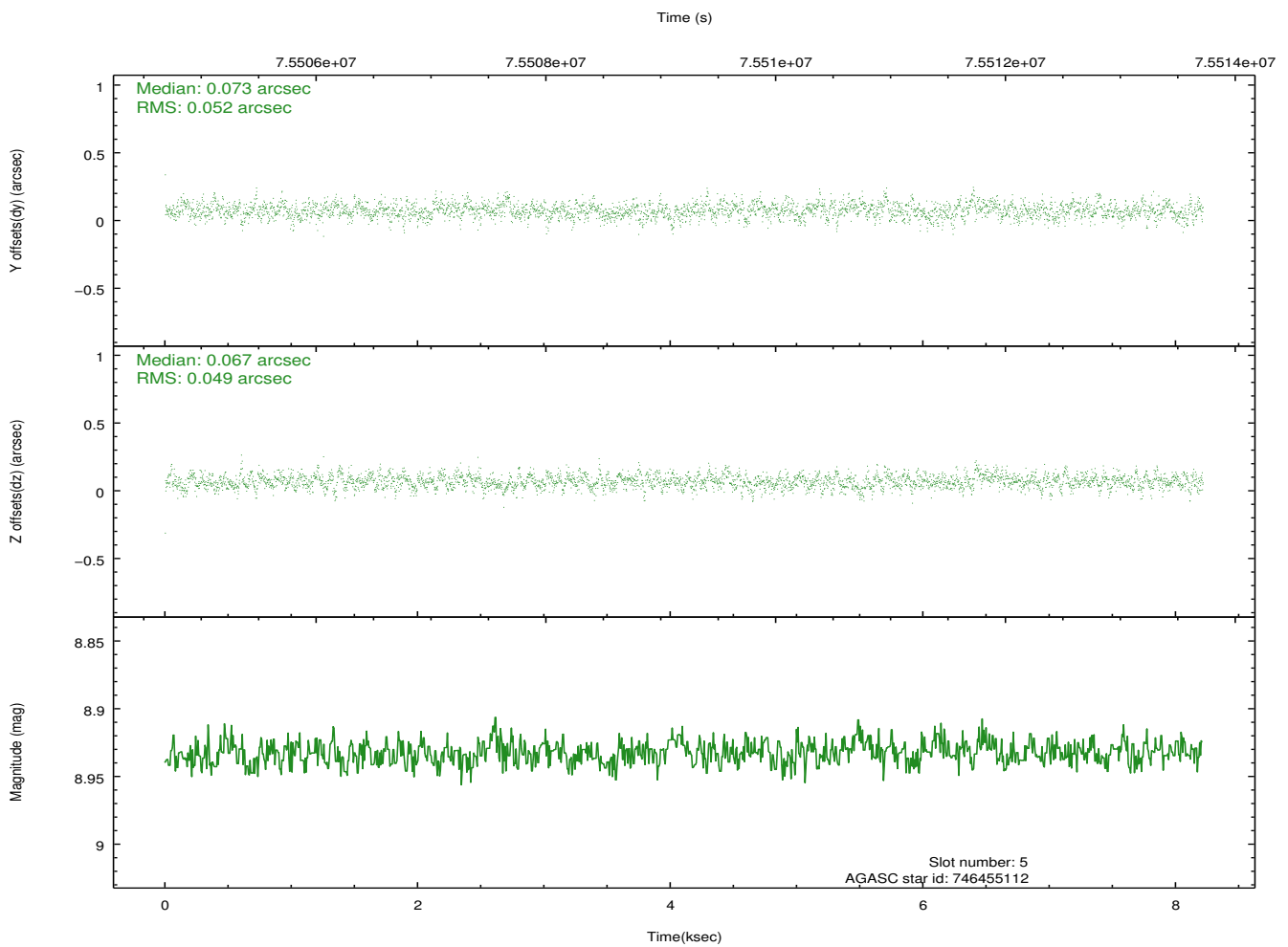
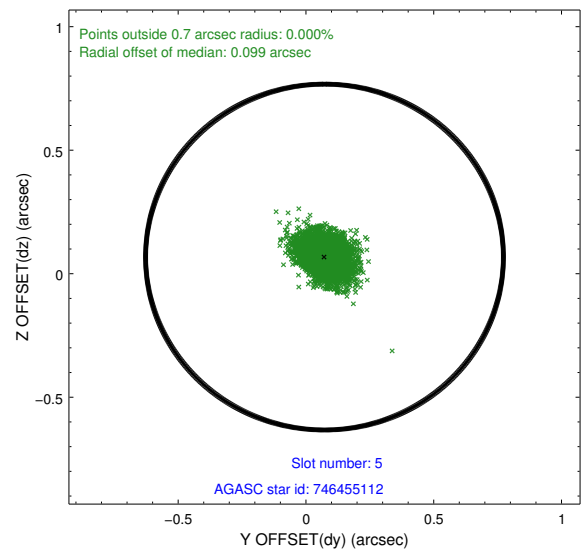
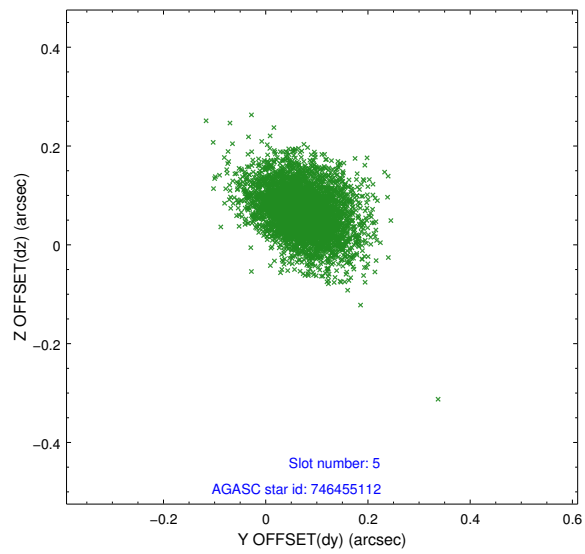
### 2.4.1 Slot 3



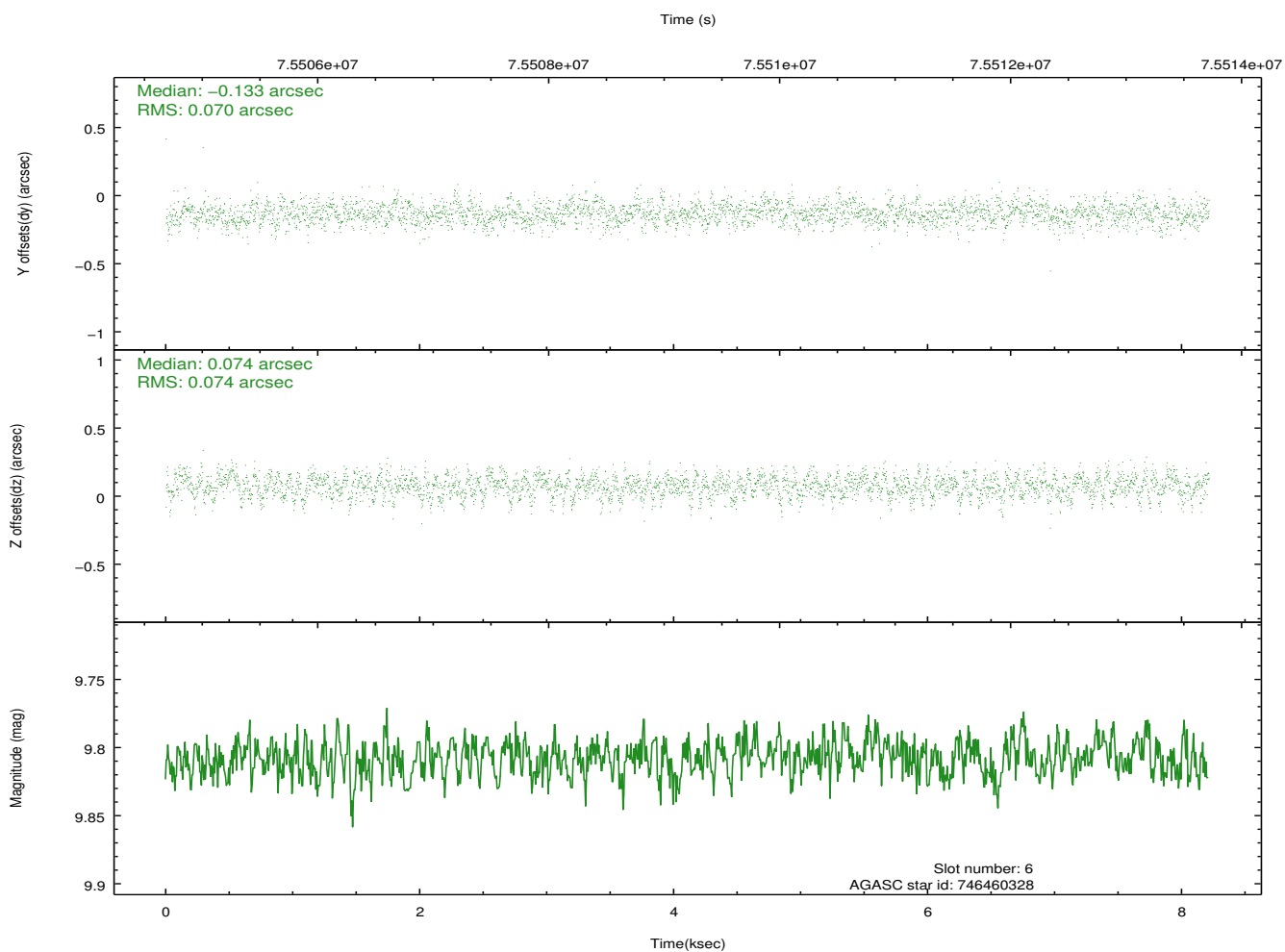
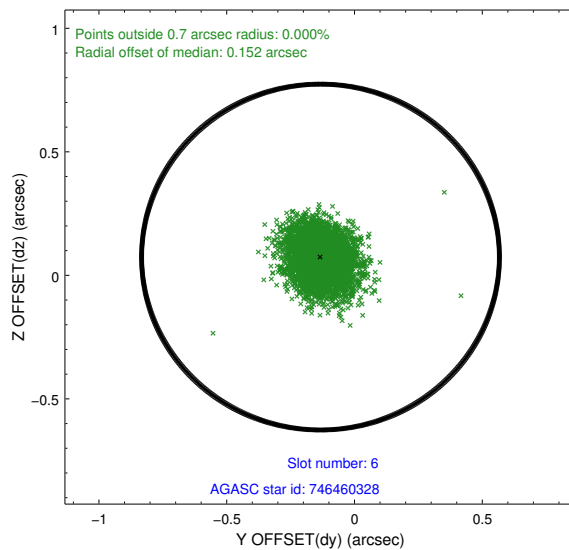
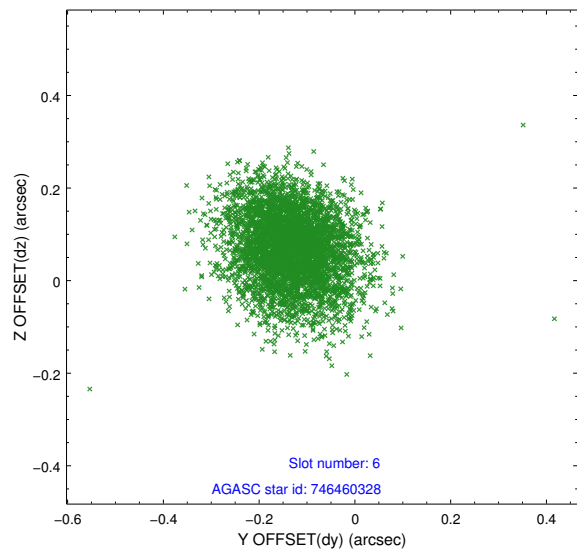
## 2.4.2 Slot 4



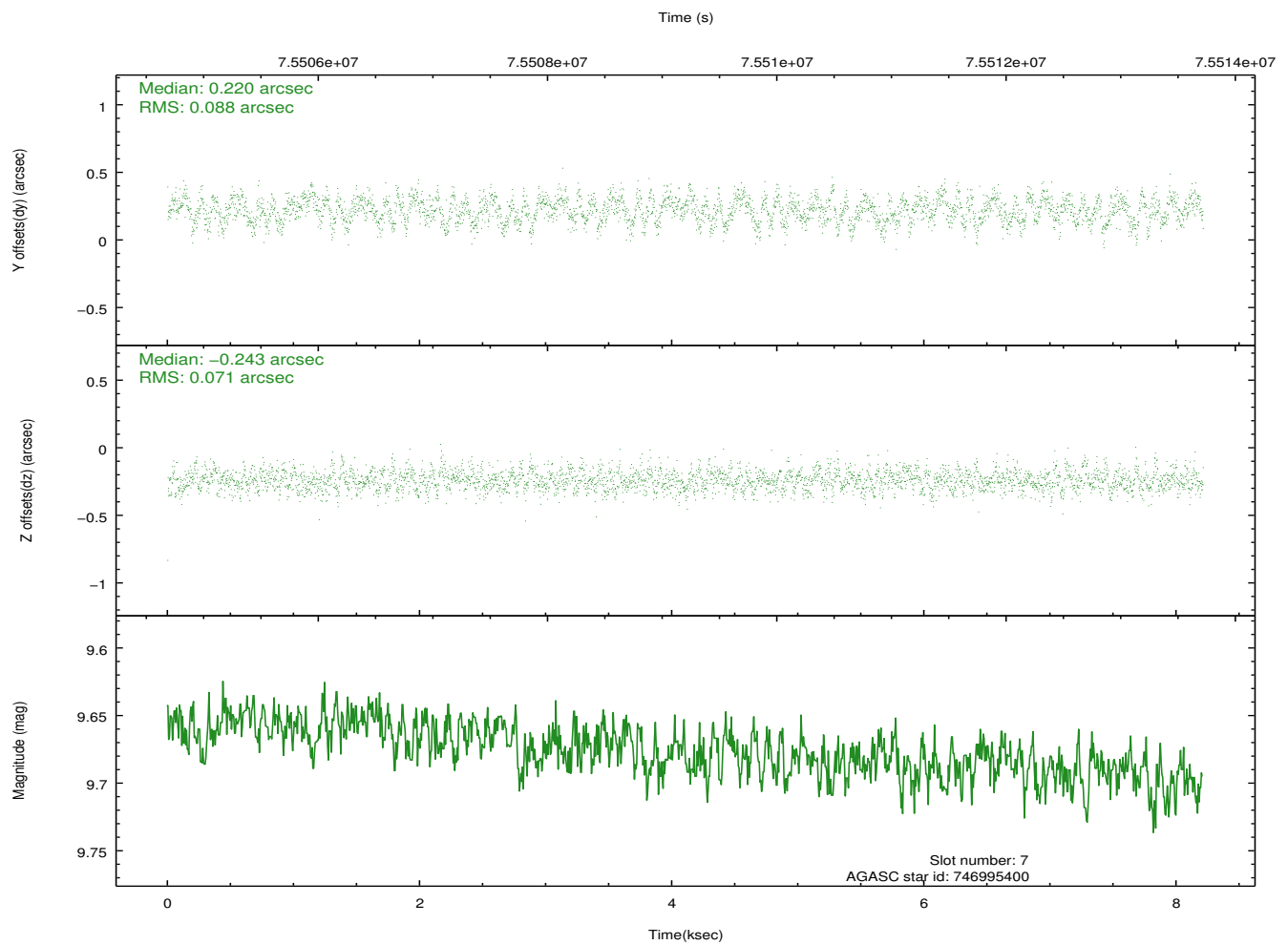
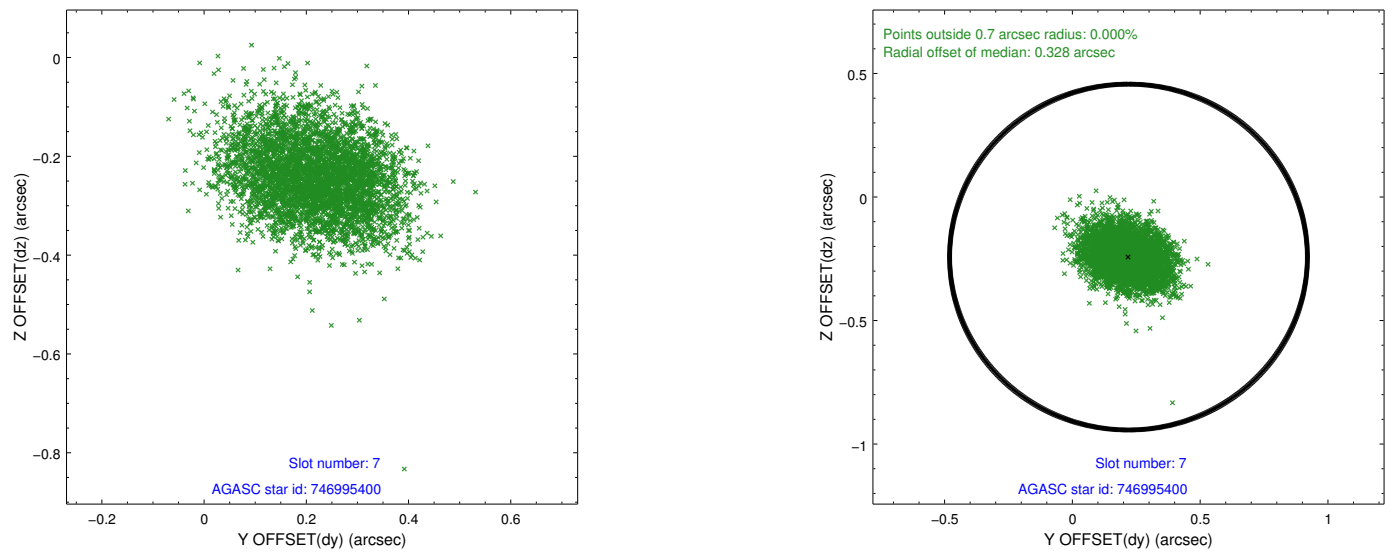
### 2.4.3 Slot 5



## 2.4.4 Slot 6

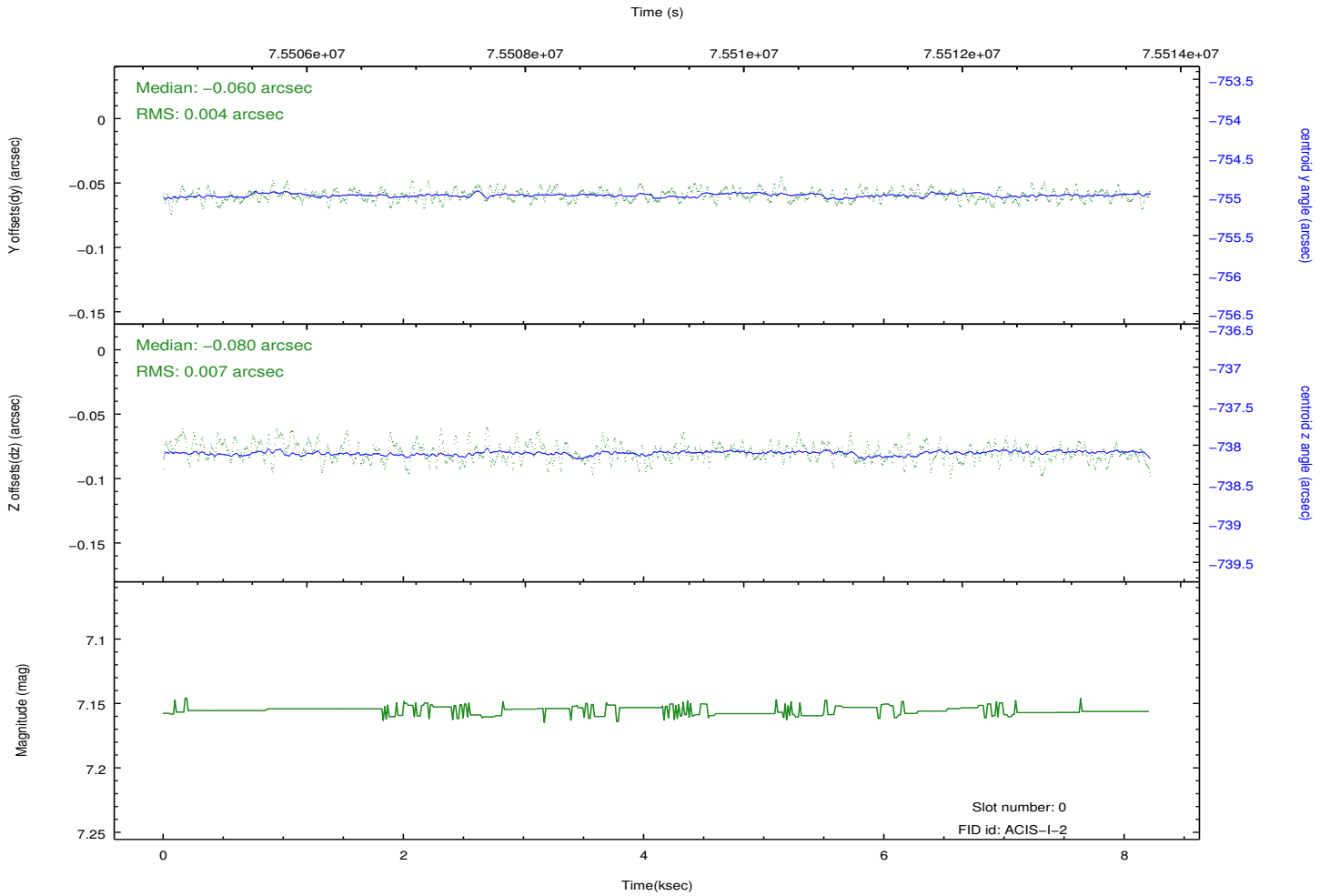
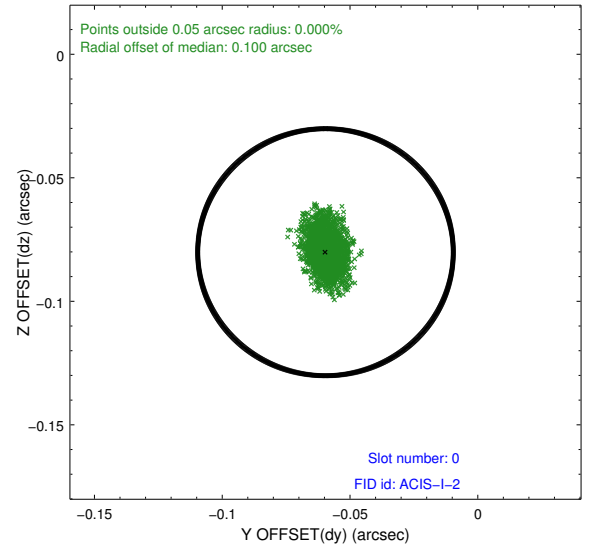
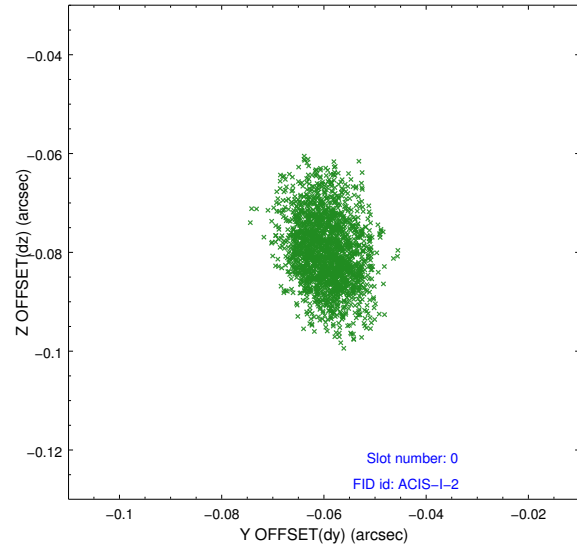


## 2.4.5 Slot 7

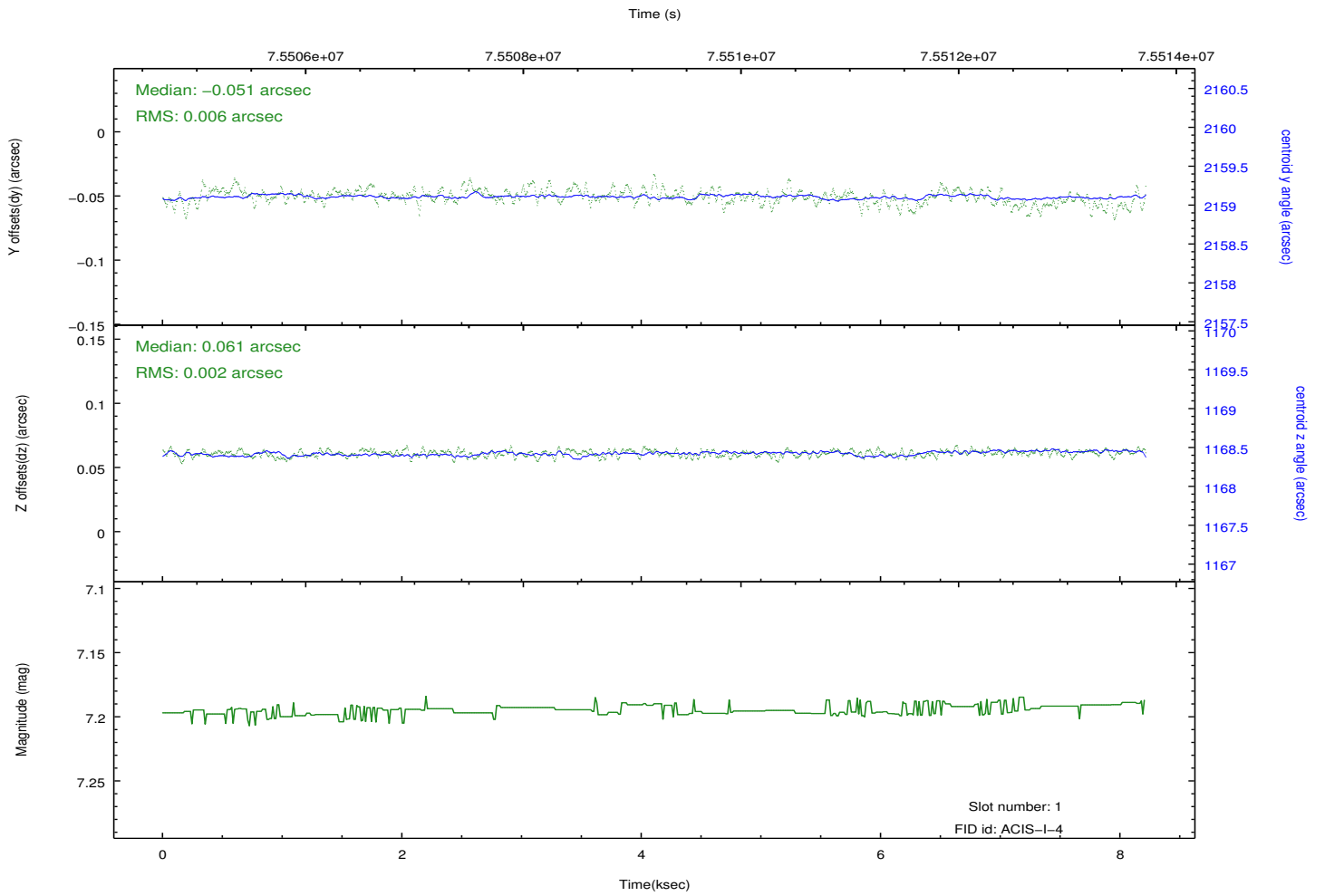
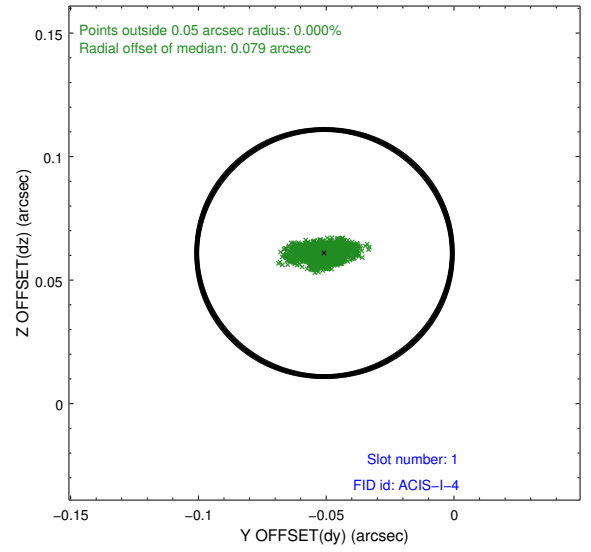
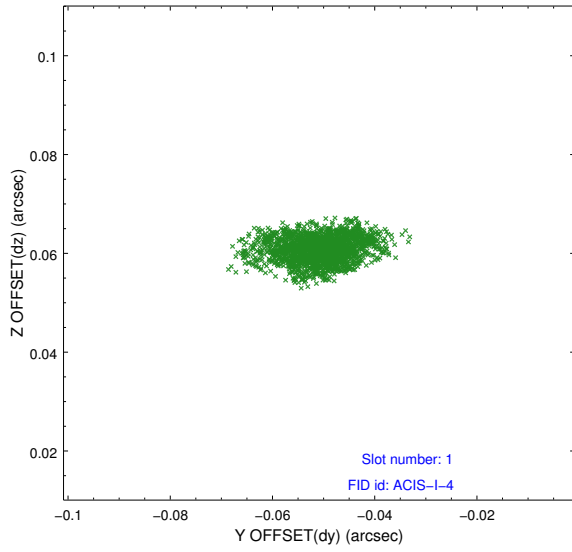


## 2.5 FID Slots

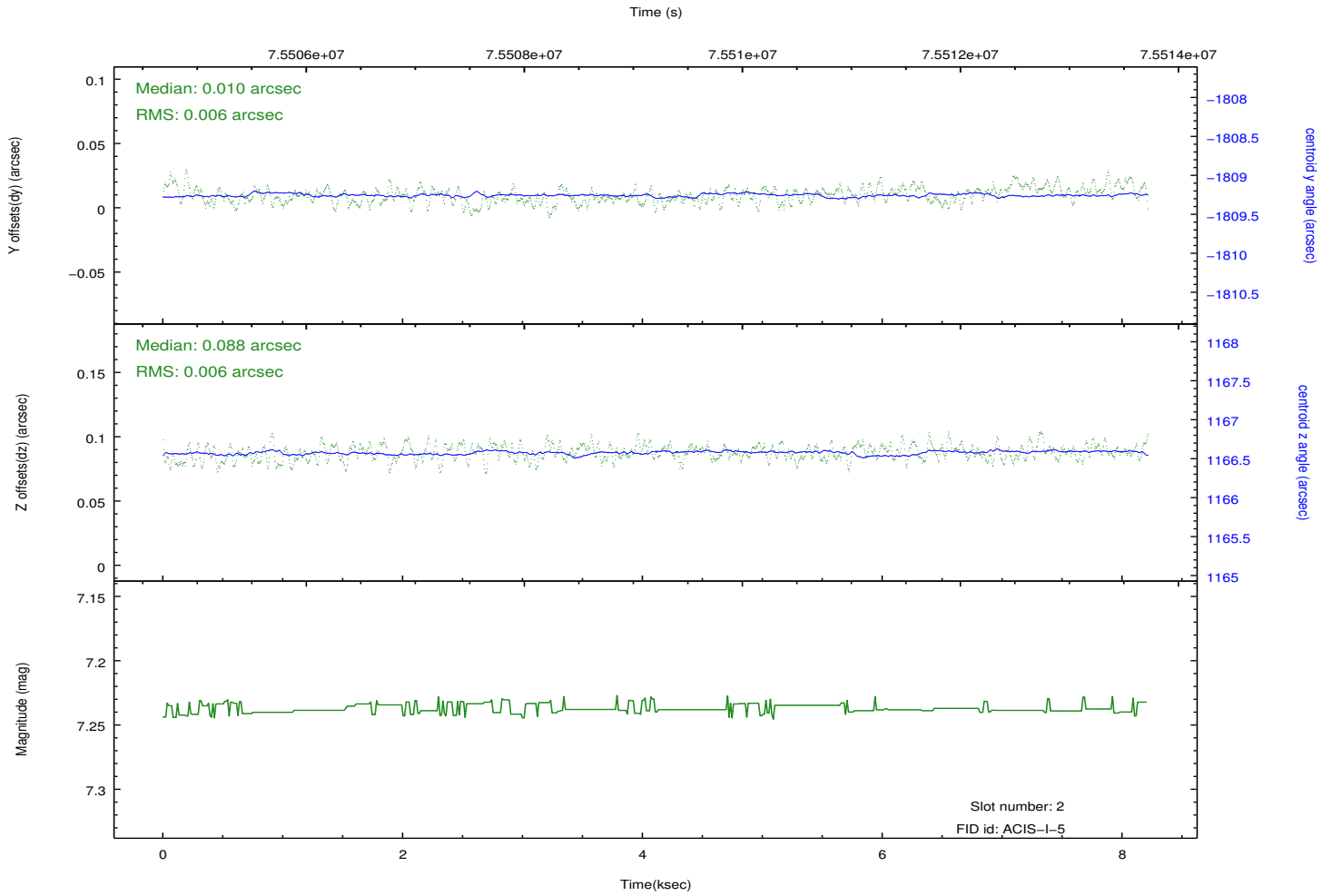
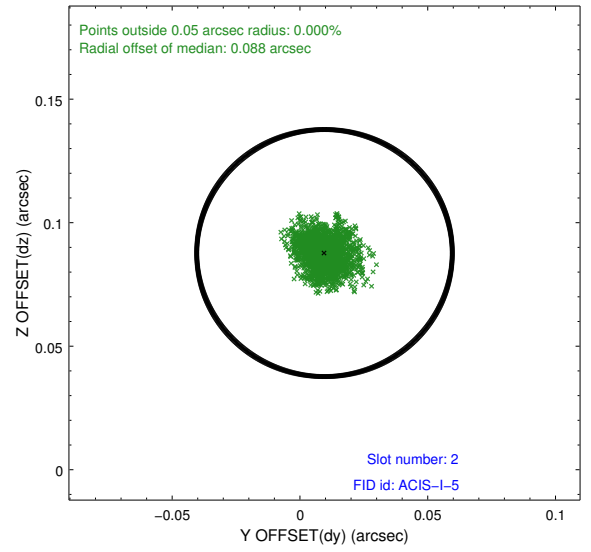
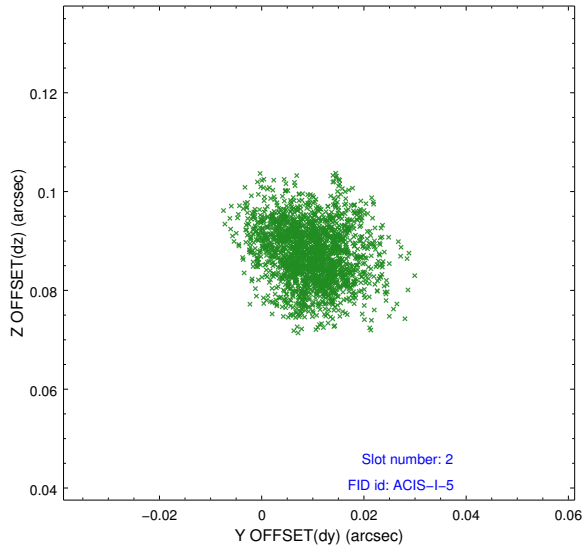
### 2.5.1 Slot 0



## 2.5.2 Slot 1



### 2.5.3 Slot 2



# A Summary

## A.1 Status

V&V Scientist	Jen Lauer
V&V Date (YYYY-MM-DD)	2012.08.31
V&V Edition	1
V&V Disposition and Status	OK
V&V Charge Time	7.67

## A.2 Comments