

V&V Reference Report

L2 ASCDS Version : 10.2.4

Observation 17412 - L2 Version 1
Chandra X-Ray Center

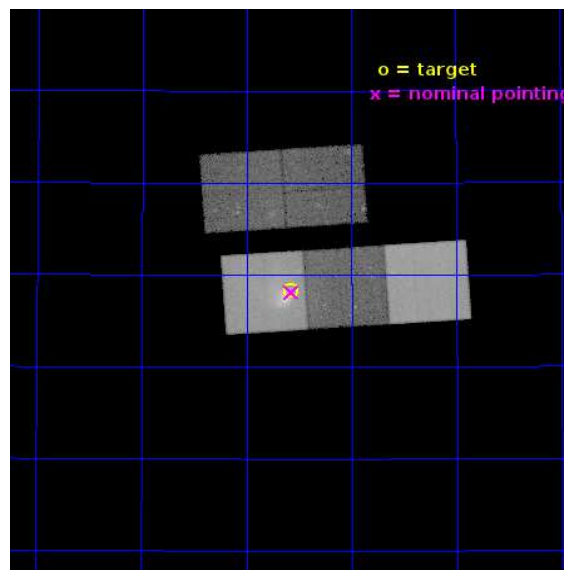
L2 Processing Date : Sep 15 2014

Contents

1	Front	2
2	OBI	3
2.1	OBI	3
2.1.1	Images	3
2.1.2	Bias	3
2.1.3	Parameters	4
2.1.4	Events	4
2.2	Compared Parameters	5
2.3	Aspect	6
2.4	Star Slots	9
2.4.1	Slot 3	9
2.4.2	Slot 4	10
2.4.3	Slot 5	11
2.4.4	Slot 6	12
2.4.5	Slot 7	13
2.5	FID Slots	14
2.5.1	Slot 0	14
2.5.2	Slot 1	15
2.5.3	Slot 2	16
A	Summary	17
A.1	Status	17
A.2	Comments	17

1 Front

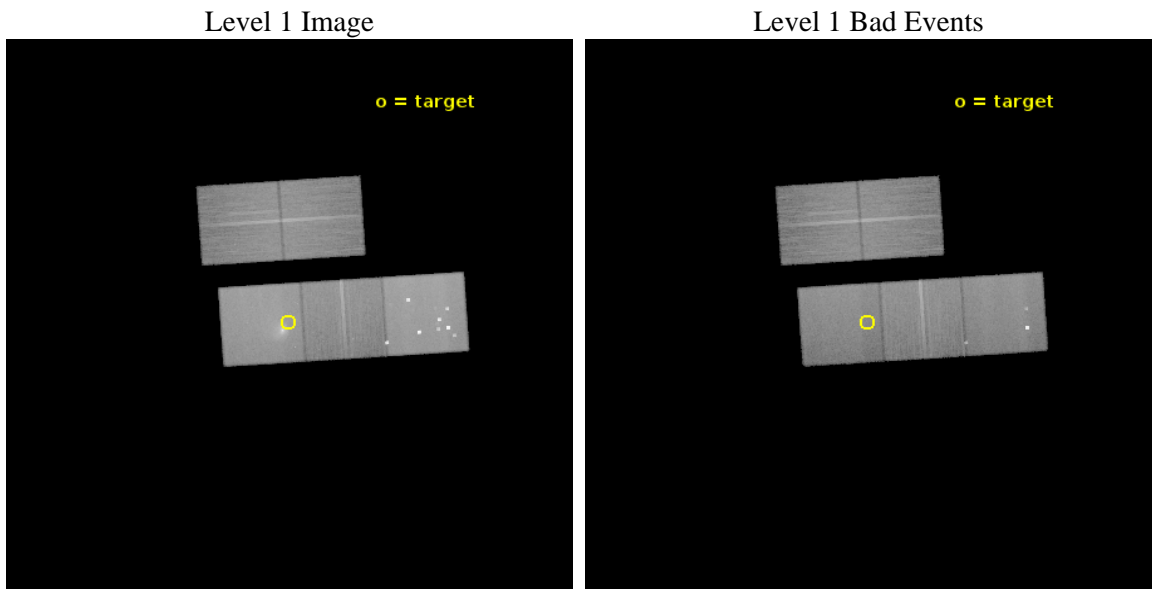
seq_num	601103	Sequence number
obs_id	17412	Observation id
title	A Study of Hydrodynamic Instabilities in the Major Merger of Galaxy Groups NGC7618 and UGC12491	Proposal title
observer	Dr. Marie Machacek	Principal investigator
object	UGC12491	Source name
dtcycle	0	
cycle	P	events from which exps? Prim/Second/Both
ra_targ	349.646	Observer's specified target RA [deg]
dec_targ	42.971	Observer's specified target Dec [deg]
ra_nom	349.64341385172	Nominal RA [deg]
dec_nom	42.968518823401	Nominal Dec [deg]
roll_nom	176.158392328	Nominal Roll [deg]
revision	1	Processing version of data
ontime	68899.382359922	Sum of GTIs [s]
livetime	67999.161206402	Livetime [s]
ontime2	68892.936109245	Sum of GTIs [s]
ontime3	68896.118199706	Sum of GTIs [s]
ontime5	68899.341319919	Sum of GTIs [s]
ontime6	68899.300279915	Sum of GTIs [s]
ontime7	68899.382359922	Sum of GTIs [s]
l2events	562547	Number of level 2 events



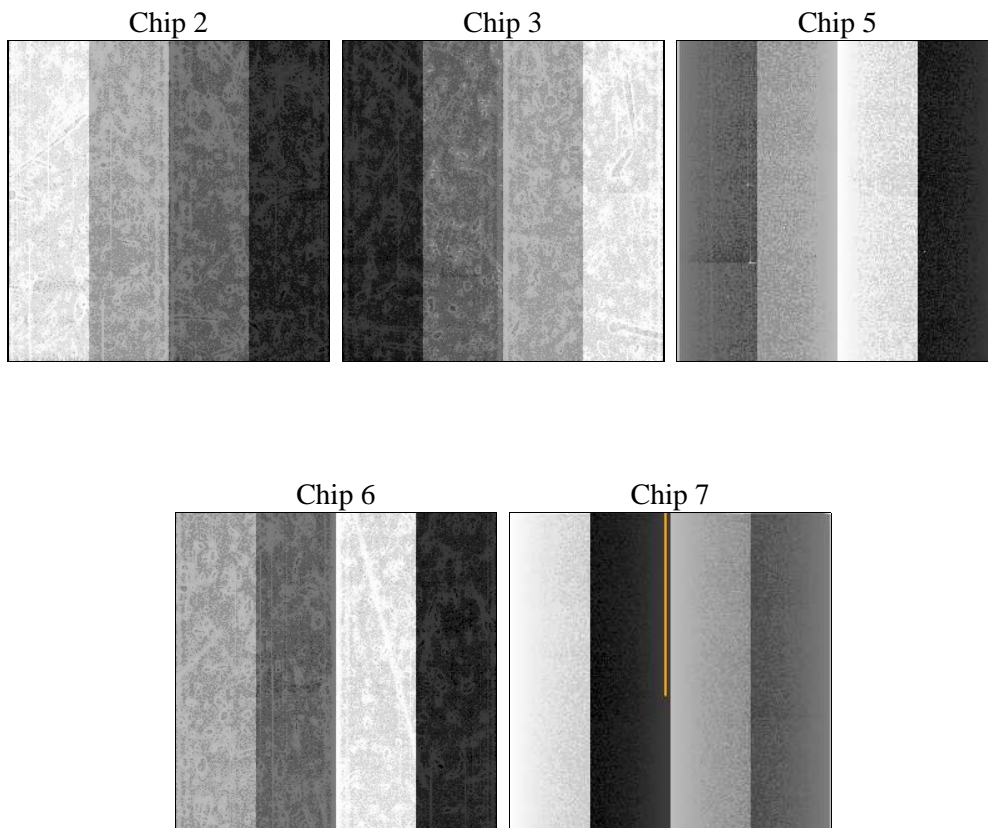
2 OBI

2.1 OBI

2.1.1 Images



2.1.2 Bias



2.1.3 Parameters

obi_num	2	Obi number	sched_exp_time	68829.255000	[s] Scheduled observation exposure time
ascdsver	10.2.4	Processing system revision	ontime	68899.382359922	Sum of GTIs [s]
caldbver	4.6.3	 	ontime2	68892.936109245	Sum of GTIs [s]
date	2014-09-15T05:27:48	Date and time of file creation	ontime3	68896.118199706	Sum of GTIs [s]
revision	1	Processing version of data	ontime5	68899.341319919	Sum of GTIs [s]
			ontime6	68899.300279915	Sum of GTIs [s]
			ontime7	68899.382359922	Sum of GTIs [s]
			l1events	1987498	Number of level 1 events

2.1.4 Events

	ccd 2	ccd 3	ccd 5	ccd 6	ccd 7
level 1 events	299136	291860	601109	320773	474620
rejected events	261937	255849	292861	274806	242187
rejected %	87%	87%	48%	85%	51%

	ccd 2	ccd 3	ccd 5	ccd 6	ccd 7
grade 0 events	14224	13604	68196	19360	31167
	4%	4%	11%	6%	6%
grade 1 events	162	144	1029	169	523
	0%	0%	0%	0%	0%
grade 2 events	8799	7728	82251	9657	51656
	2%	2%	13%	3%	10%
grade 3 events	3511	3674	9965	4041	21232
	1%	1%	1%	1%	4%
grade 4 events	3747	3728	9527	3874	20704
	1%	1%	1%	1%	4%
grade 5 events	13225	15772	37939	16293	42998
	4%	5%	6%	5%	9%
grade 6 events	6922	7279	138350	9036	107688
	2%	2%	23%	2%	22%
grade 7 events	248546	239931	253852	258343	198652
	83%	82%	42%	80%	41%

2.2 Compared Parameters

Parameter	Planned	Actual	Parameter	Planned	Actual
Instrument	ACIS	ACIS	Obspar format version number	7	7
Detector	ACIS-23567	ACIS-23567	Obspar file type	PREDICTED	ACTUAL
Grating	NONE	NONE	Obspar update status	NONE	UPDATED
Data mode	VFAINT	VFAINT	Number of optional ACIS chips dropped	0	0
Observation mode	POINTING	POINTING	On-chip summing requested	N	N
[deg] Pointing RA	349.676858	349.6434138517204	Subarray requested	NONE	NONE
[deg] Pointing Dec	42.980936	42.96851882340128	Alternating exposures requested	N	N
[deg] Pointing Roll	175.978963	176.1583923280035	[s] Primary exposure time	0.000000	3.1
[mm] SIM focus pos	-0.684267	-0.6828225247311905			
[mm] SIM defocus	0	0.001444936568705701			
[mm] SIM translation stage pos	-190.132523	-190.1425803651734			
[mm] SIM translation stage offset	0	0.01005778216563158			
[s] Observation start time (MET)	527020374.184000	527018724.3268			
Observation start date	2014-09-13T18:31:47	2014-09-13T18:05:24			
[s] Observation end time (MET)	527089204.184000	527089429.34323			
Observation end date	2014-09-14T13:38:57	2014-09-14T13:43:49			
Read mode	TIMED	TIMED			

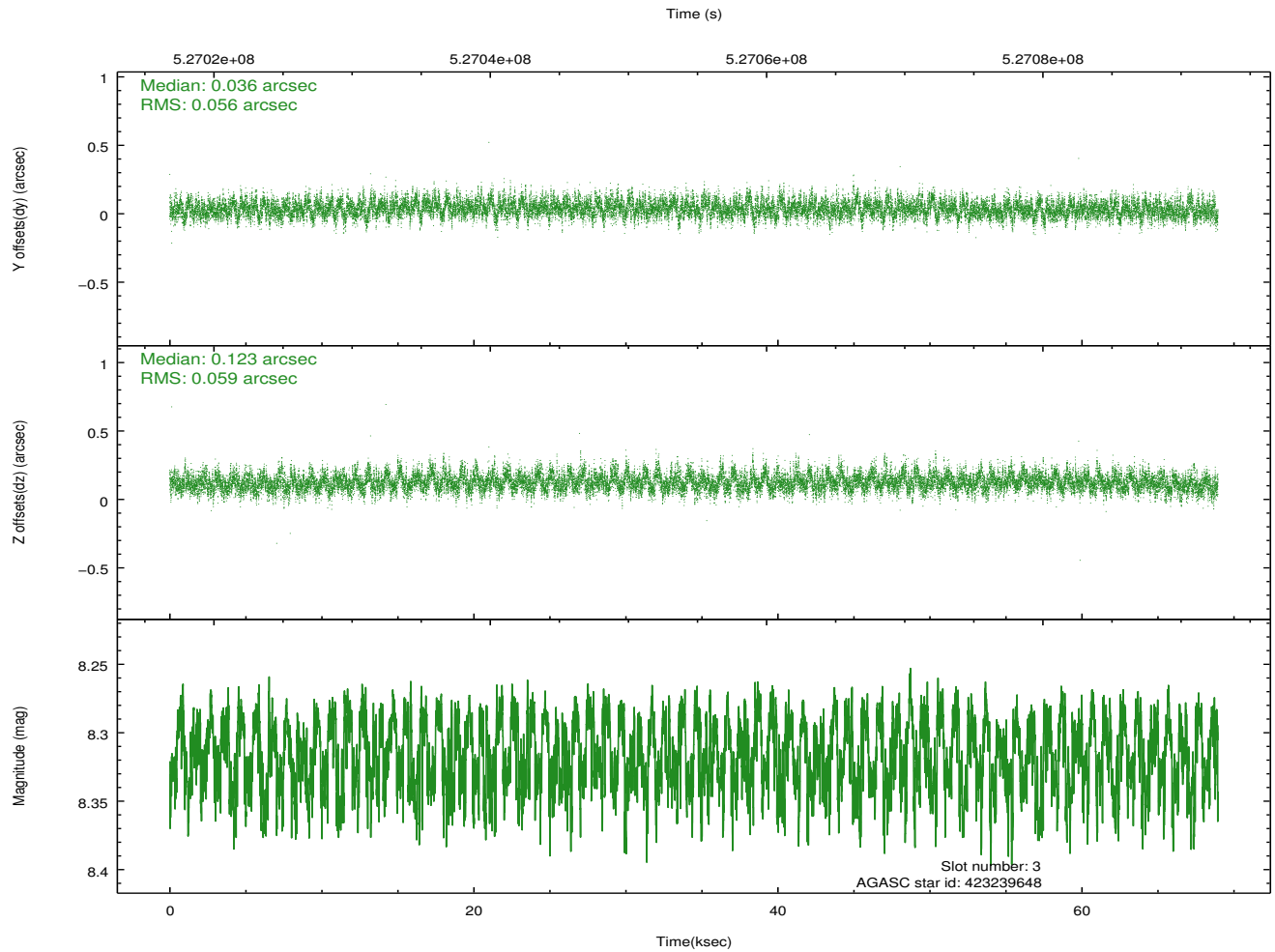
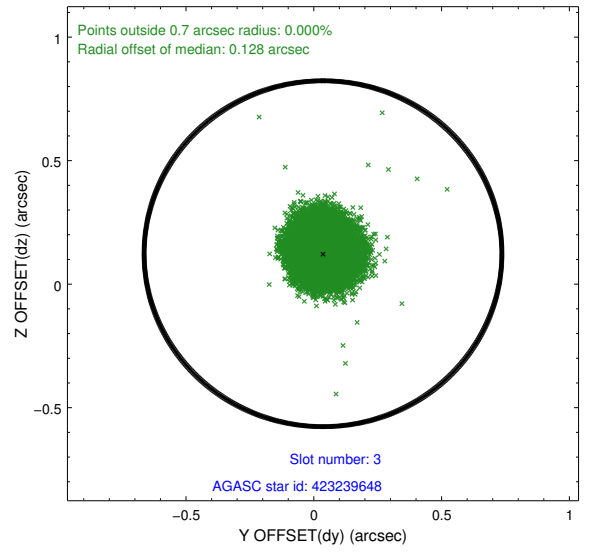
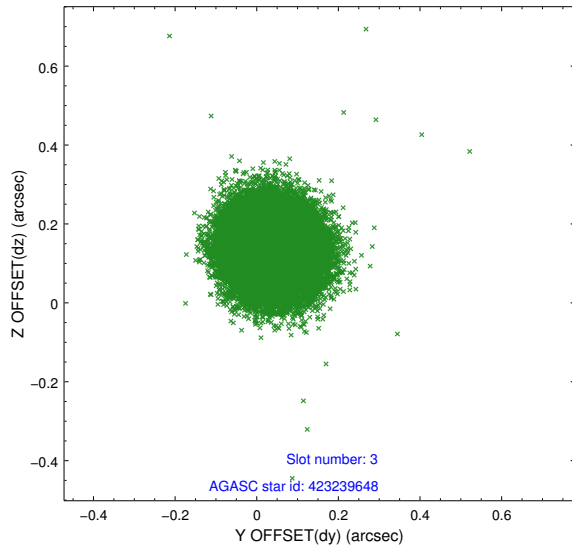
2.3 Aspect

Slot Statistics

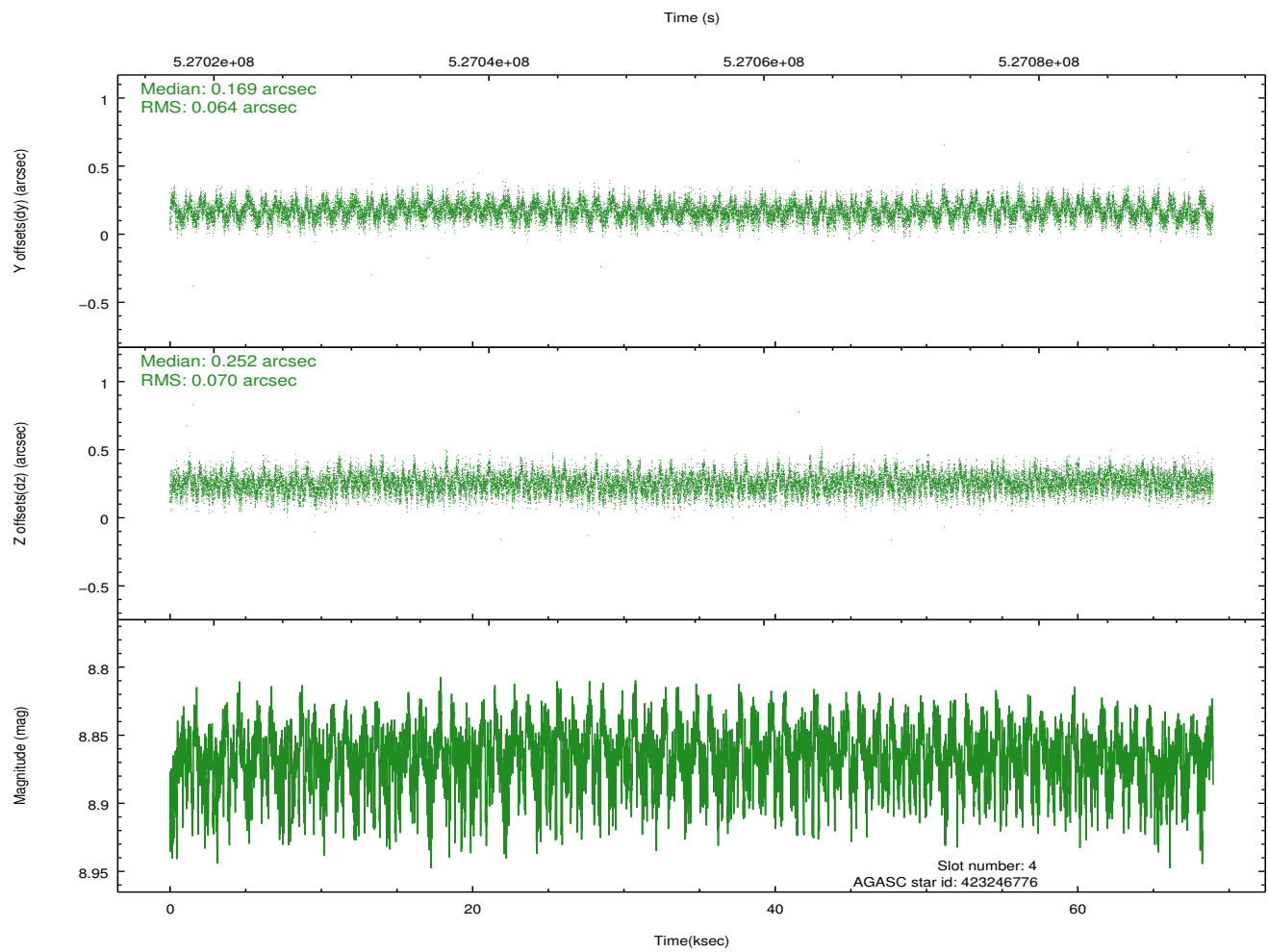
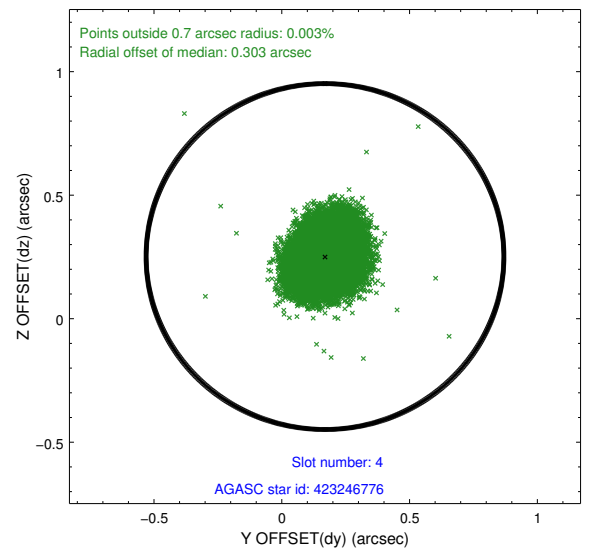
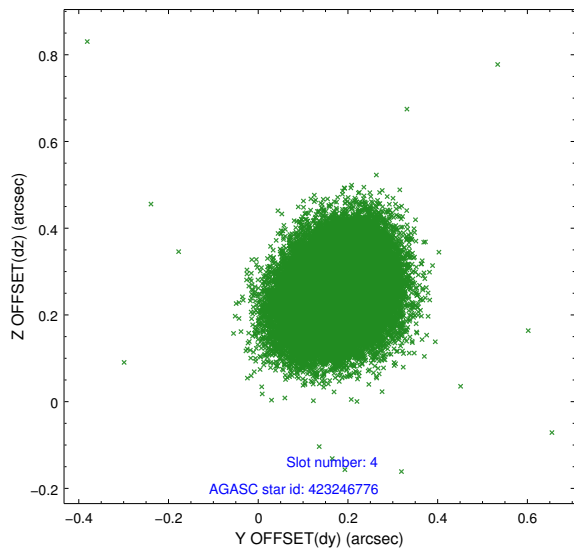
slot	status	id	mag	n_pts	med_dy	med_dz	dr1	dr2	ra	dec	mean_y	mean_z
0	FID	ACIS-S-1	7.09	16820	0.000	-0.058	0.012	0.025	0.000000	0.000000	915.84	-1738.09
1	FID	ACIS-S-4	7.10	16820	0.314	0.046	0.010	0.017	0.000000	0.000000	2133.48	166.26
2	FID	ACIS-S-5	7.12	16820	-0.343	0.026	0.018	0.034	0.000000	0.000000	-1833.49	159.66
3	GUIDE	423239648	8.32	33629	0.036	0.123	0.086	0.140	349.461087	43.553312	706.52	-2015.88
4	GUIDE	423246776	8.87	33618	0.169	0.252	0.101	0.161	349.847786	43.424046	-333.09	-1622.68
5	GUIDE	424938224	8.83	33625	0.244	0.252	0.121	0.191	350.059175	43.180030	-949.97	-787.32
6	GUIDE	422717960	7.35	33638	-0.509	-0.677	0.083	0.140	348.955578	42.579001	1806.09	1569.18
7	GUIDE	423248432	8.87	33620	0.060	0.046	0.079	0.129	349.086899	43.199426	1600.61	-680.99

2.4 Star Slots

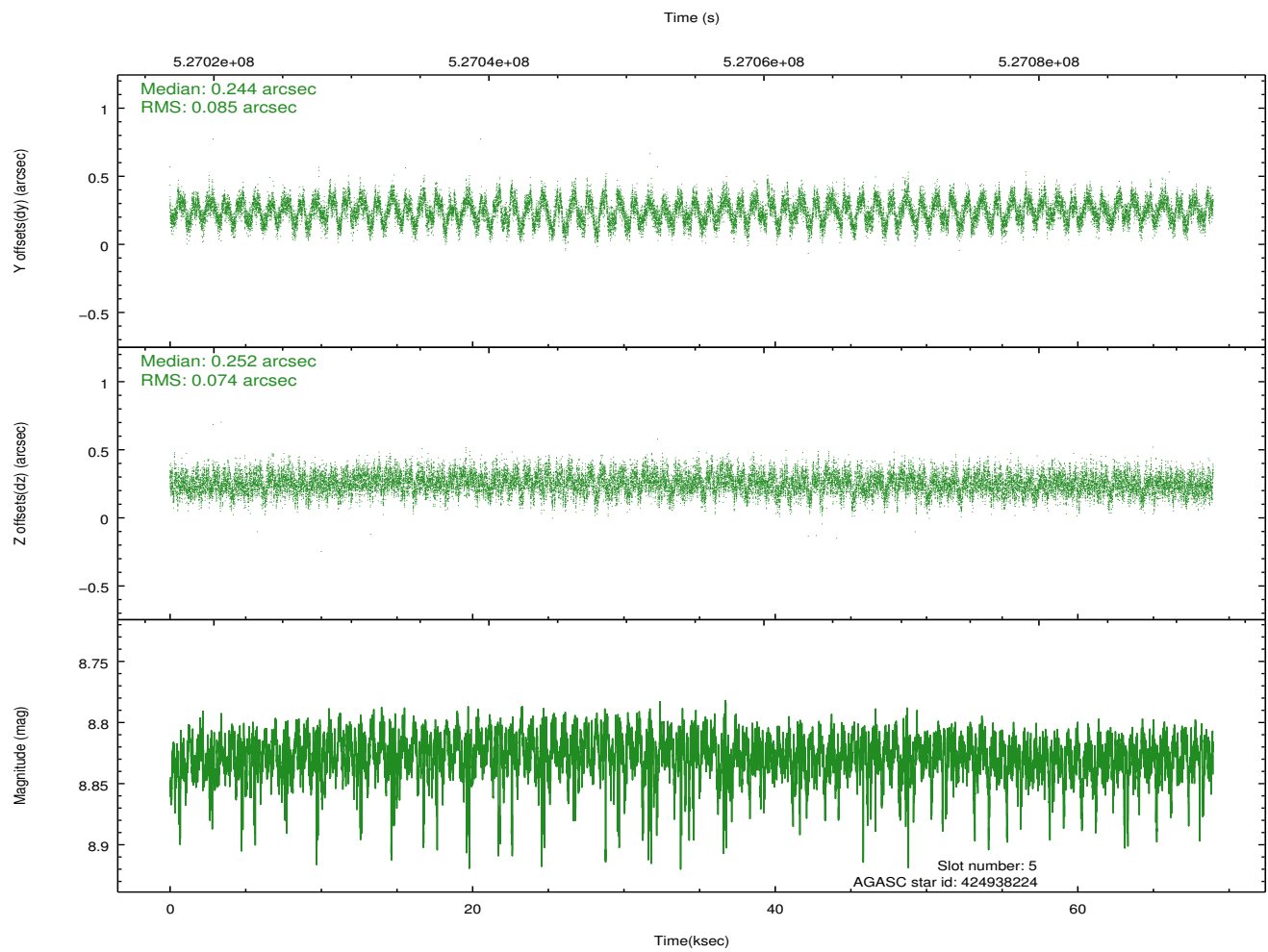
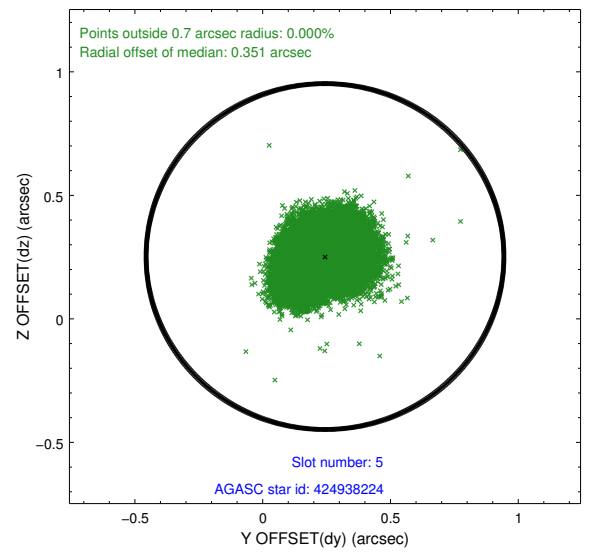
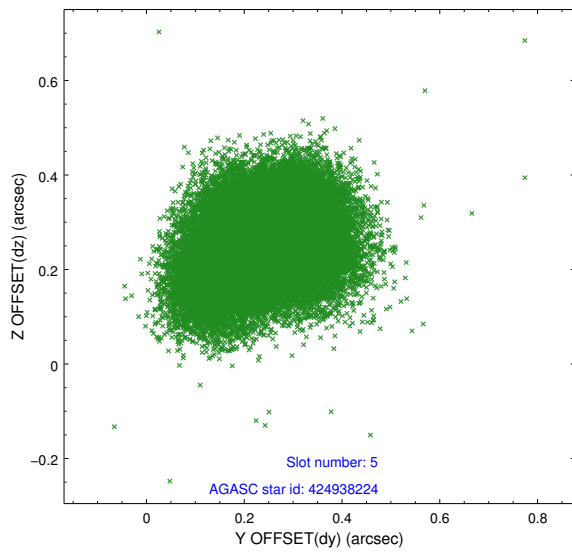
2.4.1 Slot 3



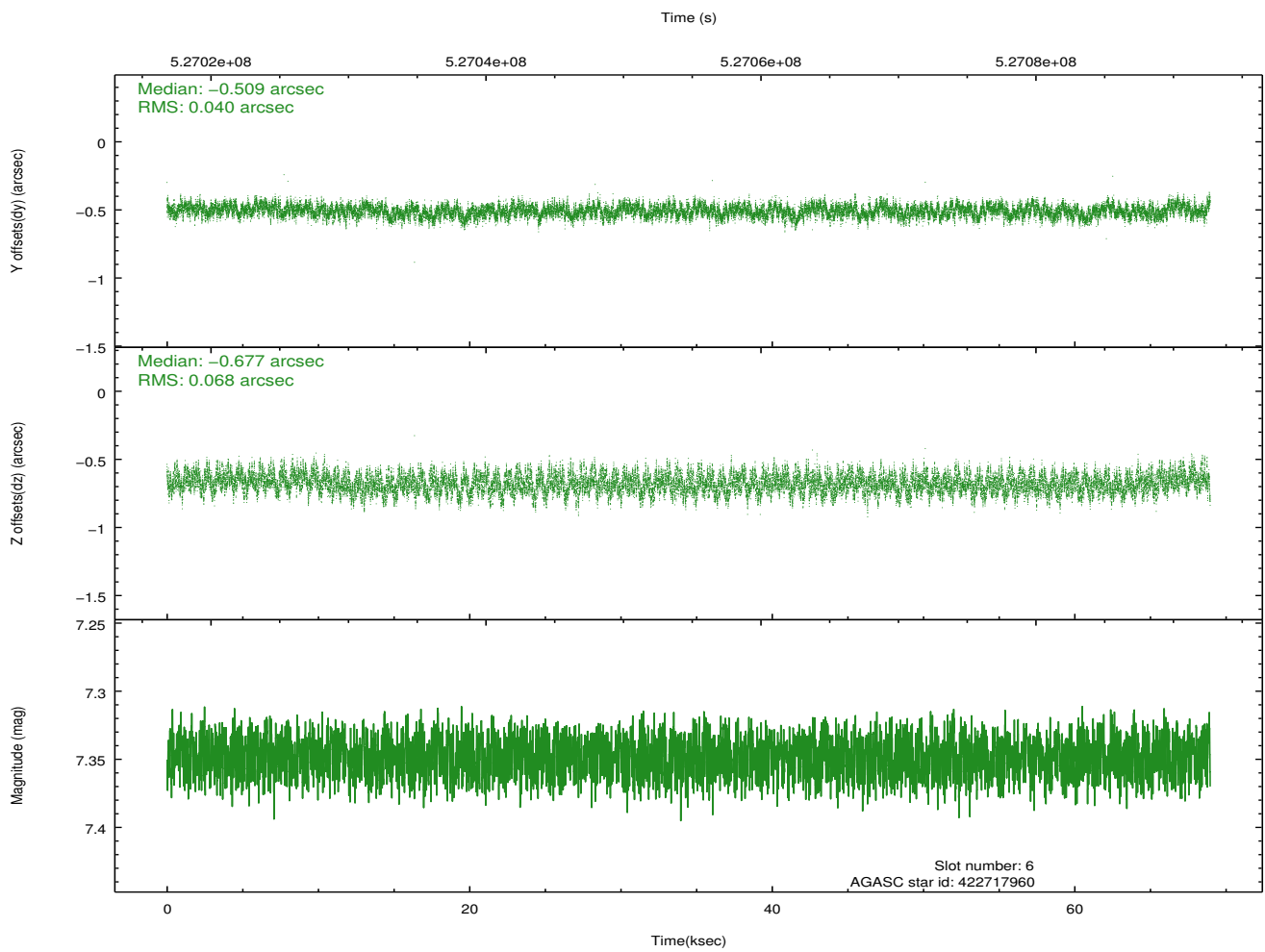
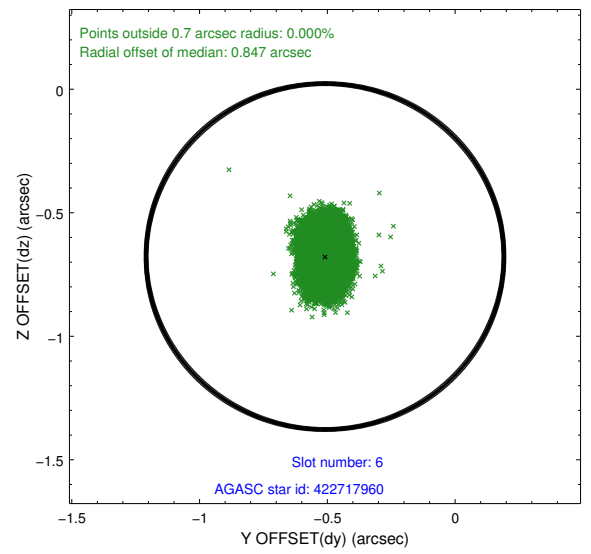
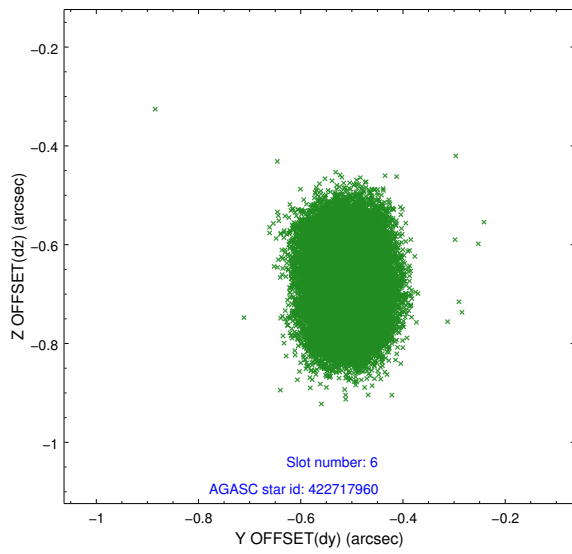
2.4.2 Slot 4



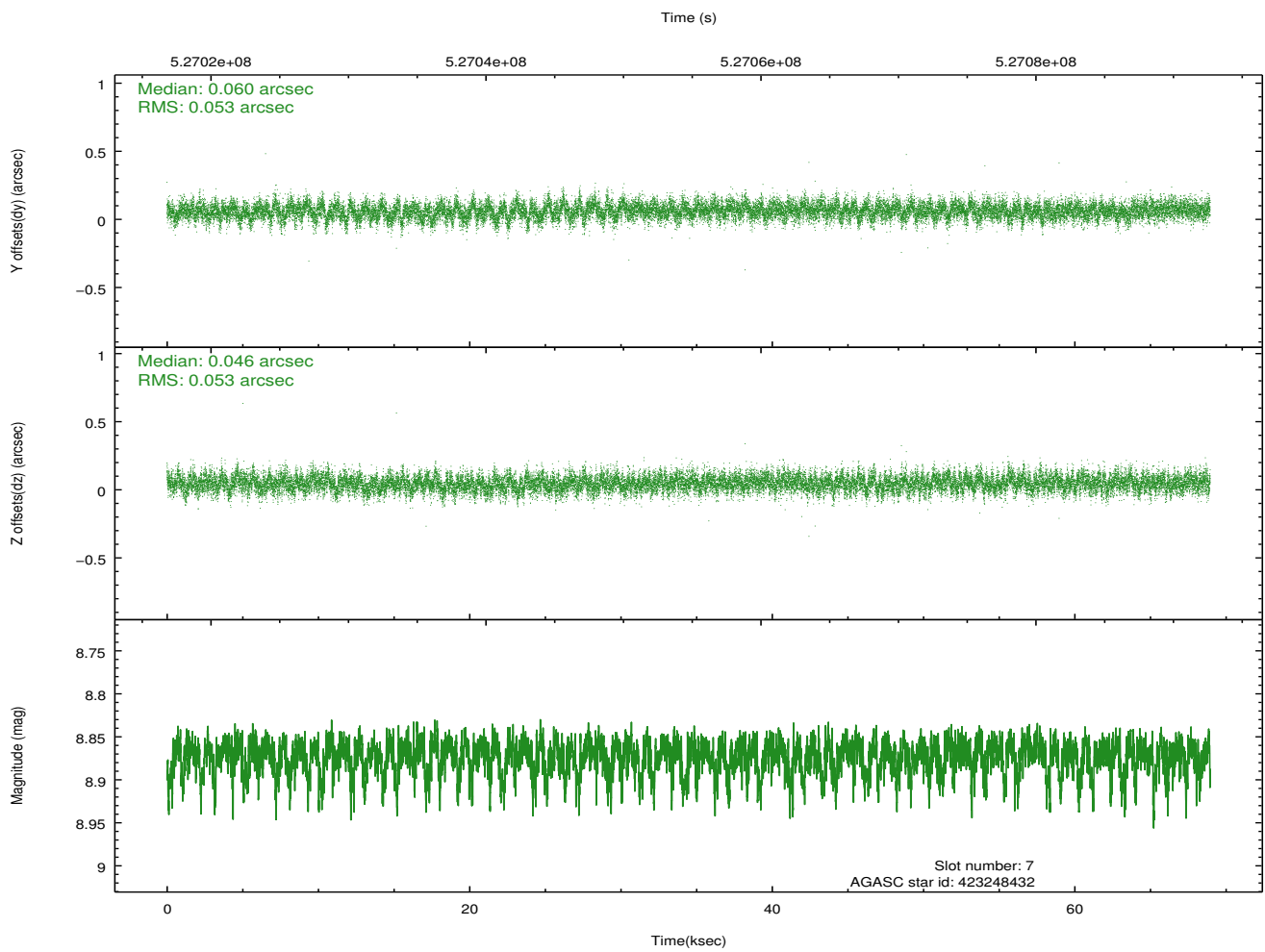
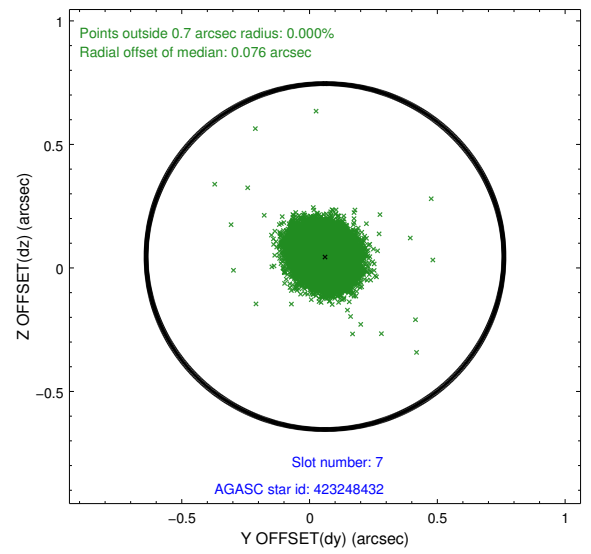
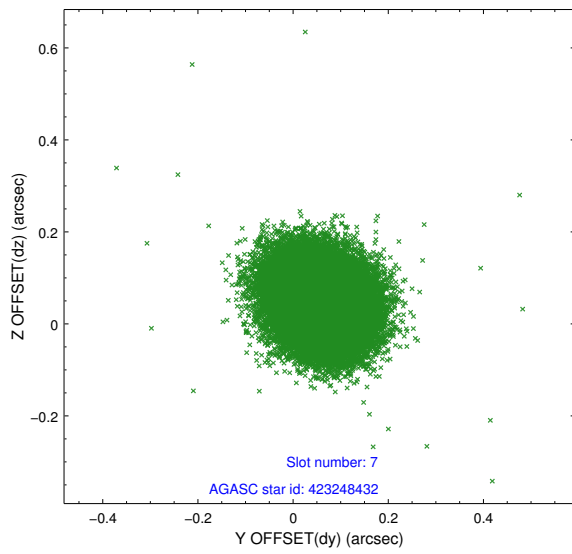
2.4.3 Slot 5



2.4.4 Slot 6

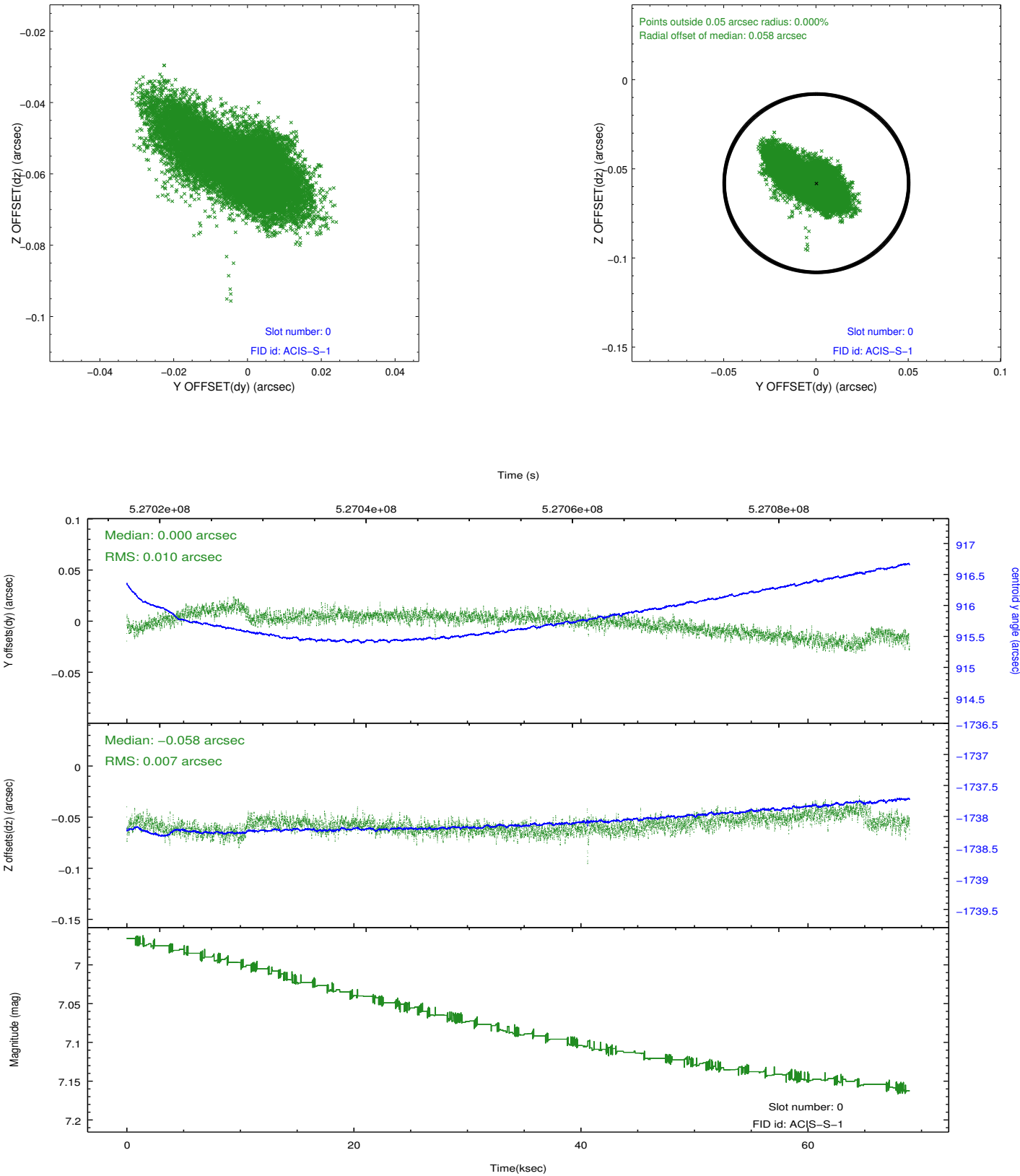


2.4.5 Slot 7

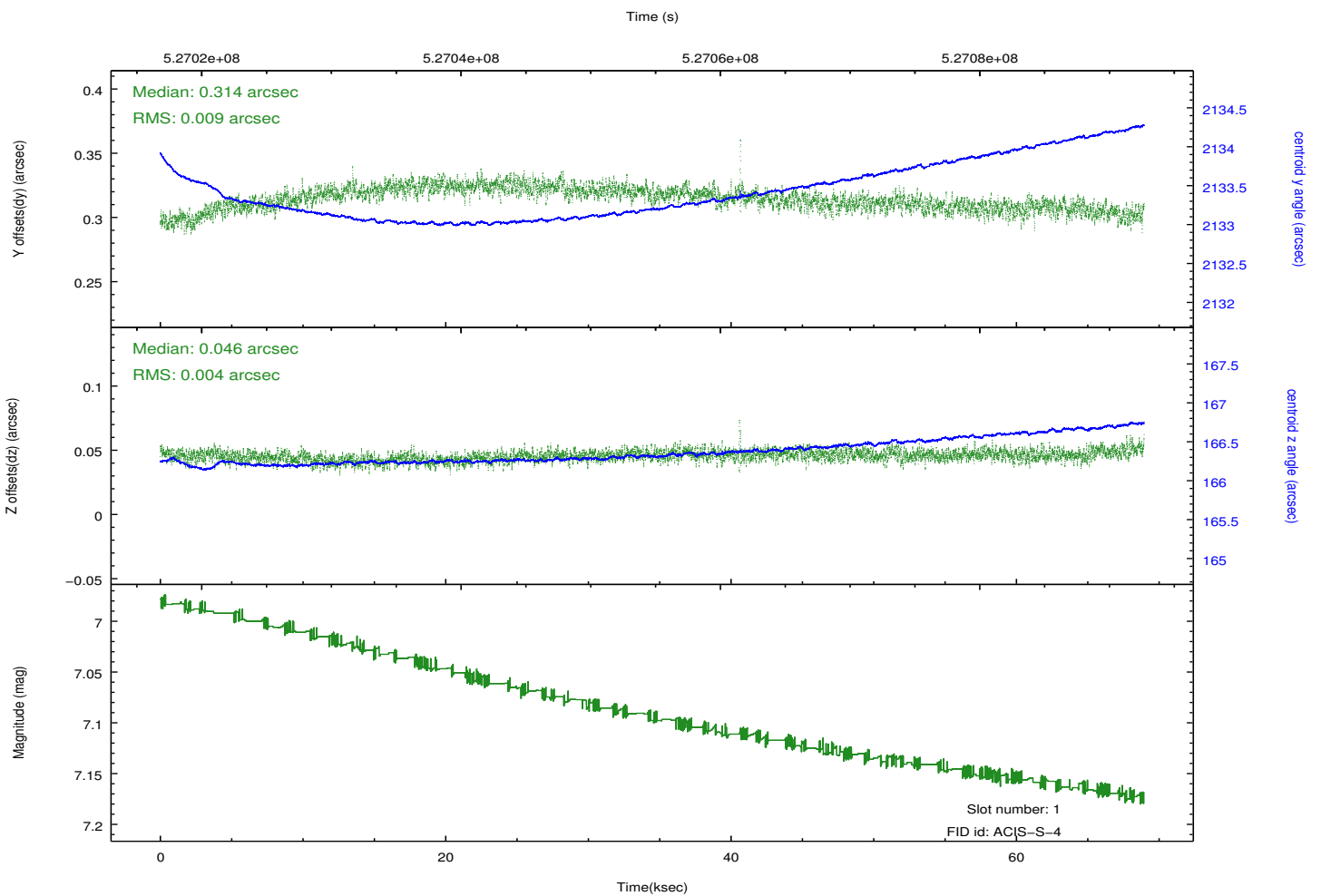
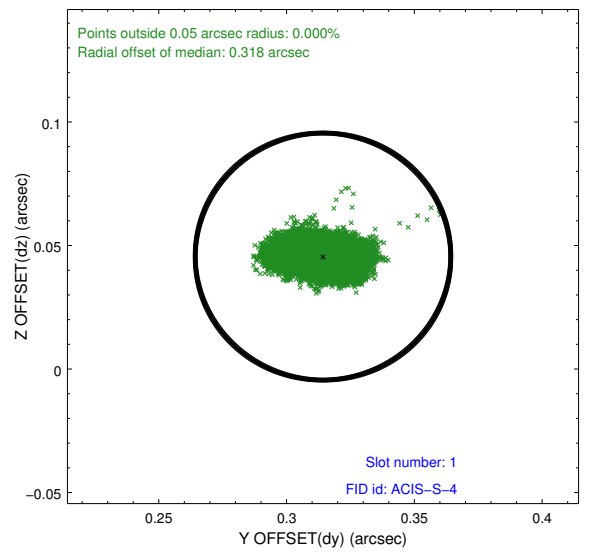
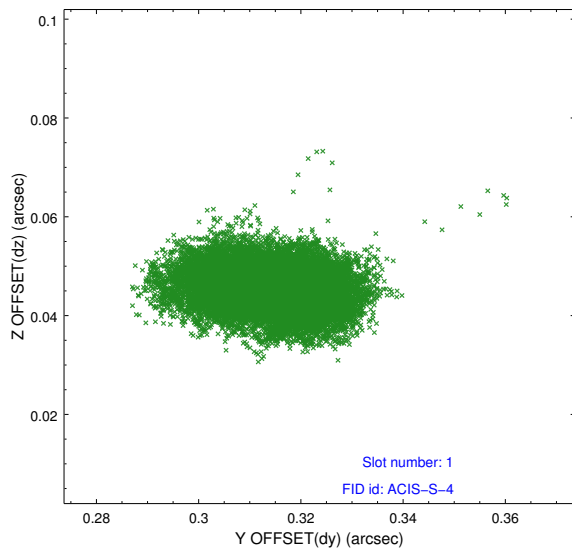


2.5 FID Slots

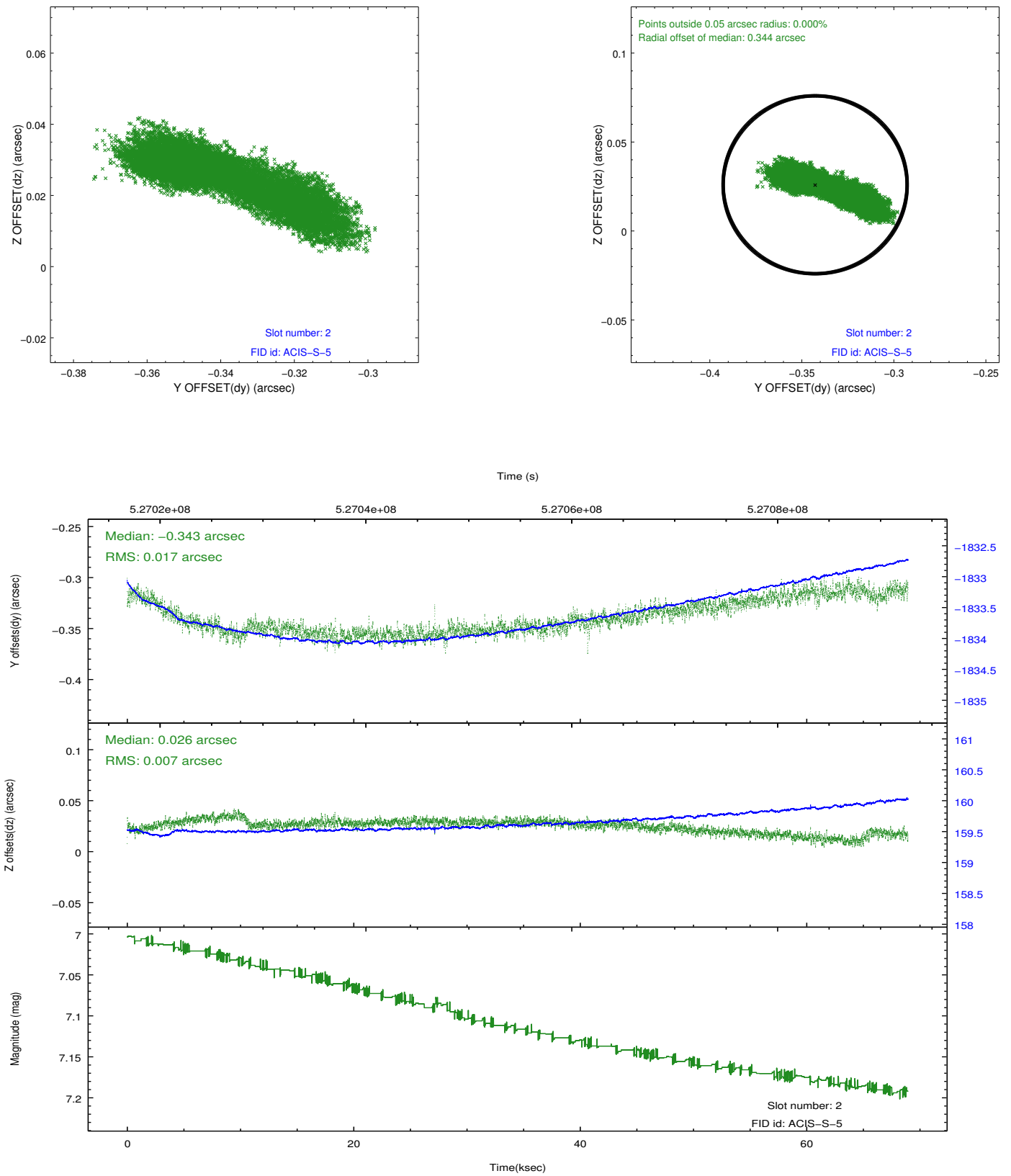
2.5.1 Slot 0



2.5.2 Slot 1



2.5.3 Slot 2



A Summary

A.1 Status

V&V Scientist	Jen Lauer
V&V Date (YYYY-MM-DD)	2014.09.15
V&V Edition	1
V&V Disposition and Status	OK
V&V Charge Time	68.899382359922

A.2 Comments