

V&V Reference Report

L2 ASCDS Version : 10.3.1

Observation 17562 - L2 Version 1
Chandra X-Ray Center

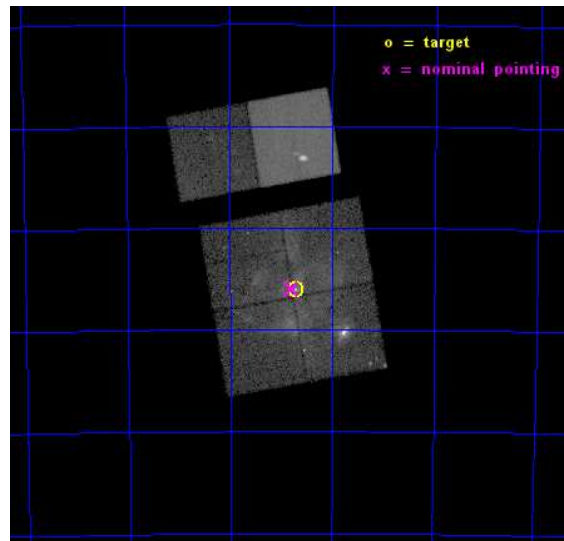
L2 Processing Date : Dec 26 2014

Contents

1	Front	2
2	OBI	3
2.1	OBI	3
2.1.1	Images	3
2.1.2	Bias	3
2.1.3	Parameters	4
2.1.4	Events	4
2.2	Compared Parameters	5
2.3	Aspect	6
2.4	Star Slots	9
2.4.1	Slot 3	9
2.4.2	Slot 4	10
2.4.3	Slot 5	11
2.4.4	Slot 6	12
2.4.5	Slot 7	13
2.5	FID Slots	14
2.5.1	Slot 0	14
2.5.2	Slot 1	15
2.5.3	Slot 2	16
A	Summary	17
A.1	Status	17
A.2	Comments	17

1 Front

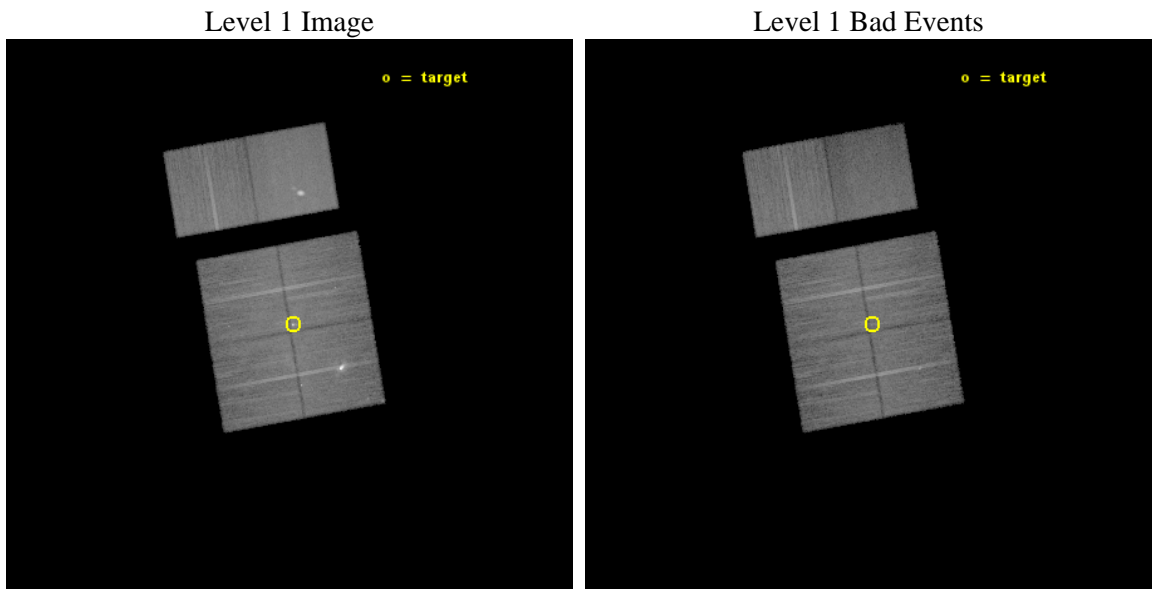
seq_num	901116	Sequence number
obs_id	17562	Observation id
title	The Tarantula -- Revealed by X-rays (T-ReX): A Definitive Chandra Investigation of 30 Doradus	Proposal title
observer	Dr. Leisa Townsley	Principal investigator
object	30 Doradus	Source name
dtcycle	0	
cycle	P	events from which exps? Prim/Second/Both
ra_targ	84.676667	Observer's specified target RA [deg]
dec_targ	-69.100806	Observer's specified target Dec [deg]
ra_nom	84.699396167604	Nominal RA [deg]
dec_nom	-69.099721514796	Nominal Dec [deg]
roll_nom	350.22990926464	Nominal Roll [deg]
revision	1	Processing version of data
ontime	42569.599841475	Sum of GTIs [s]
livetime	42030.557935947	Livetime [s]
ontime0	42569.599841475	Sum of GTIs [s]
ontime1	42569.599841475	Sum of GTIs [s]
ontime2	42566.358871162	Sum of GTIs [s]
ontime3	42569.599841475	Sum of GTIs [s]
ontime6	42569.599841475	Sum of GTIs [s]
ontime7	42569.599841475	Sum of GTIs [s]
l2events	264602	Number of level 2 events



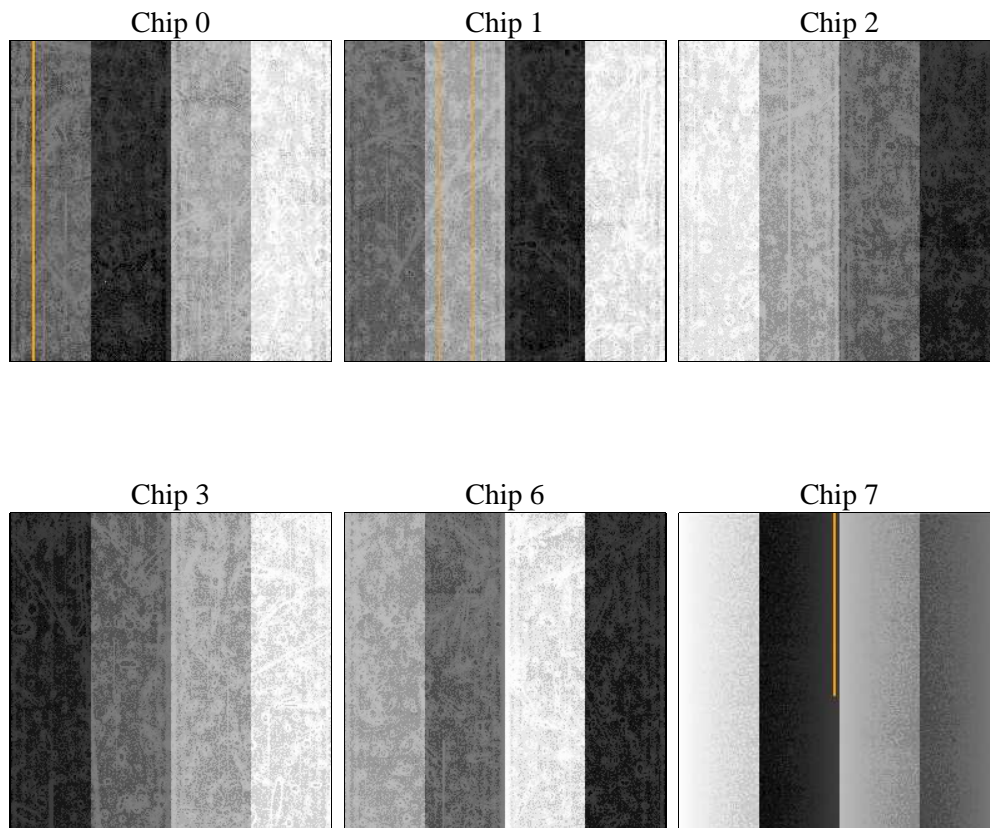
2 OBI

2.1 OBI

2.1.1 Images



2.1.2 Bias



2.1.3 Parameters

obi_num	2	Obi number	sched_exp_time	42600.000000	[s] Scheduled observation exposure time
ascdsver	10.3.1	Processing system revision	ontime	42569.599841475	Sum of GTIs [s]
caldbver	4.6.5	 	ontime0	42569.599841475	Sum of GTIs [s]
date	2014-12-26T18:14:21	Date and time of file creation	ontime1	42569.599841475	Sum of GTIs [s]
revision	1	Processing version of data	ontime2	42566.358871162	Sum of GTIs [s]
			ontime3	42569.599841475	Sum of GTIs [s]
			ontime6	42569.599841475	Sum of GTIs [s]
			ontime7	42569.599841475	Sum of GTIs [s]
			l1events	1143061	Number of level 1 events

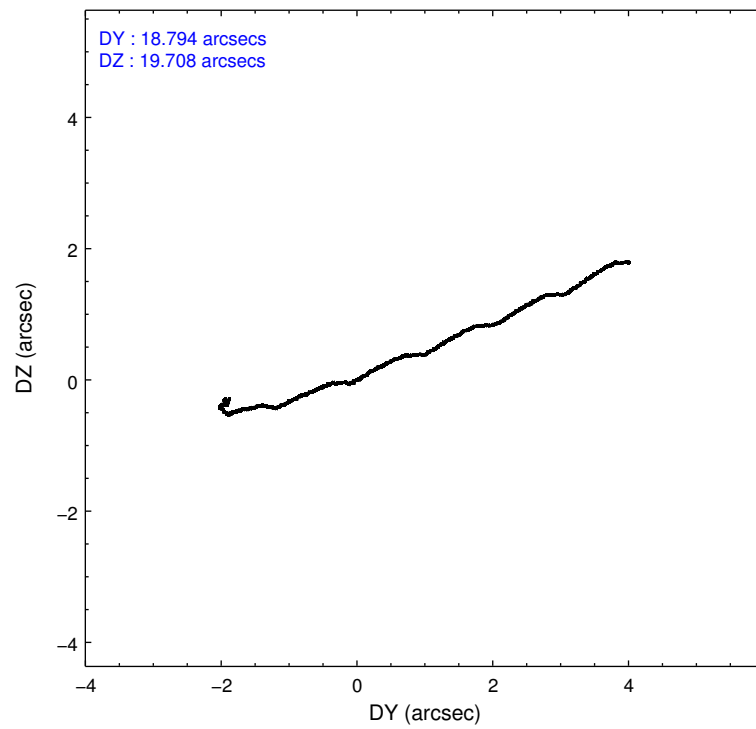
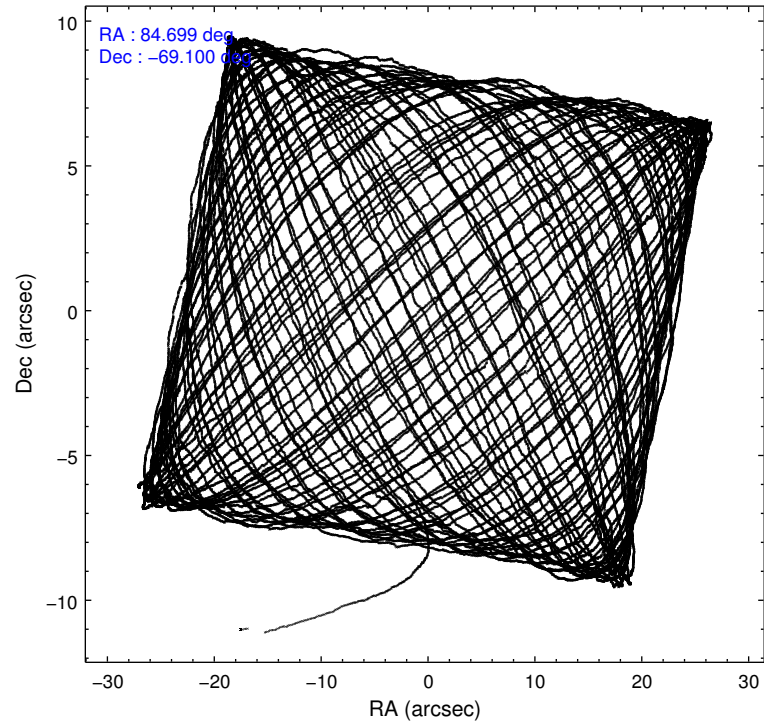
2.1.4 Events

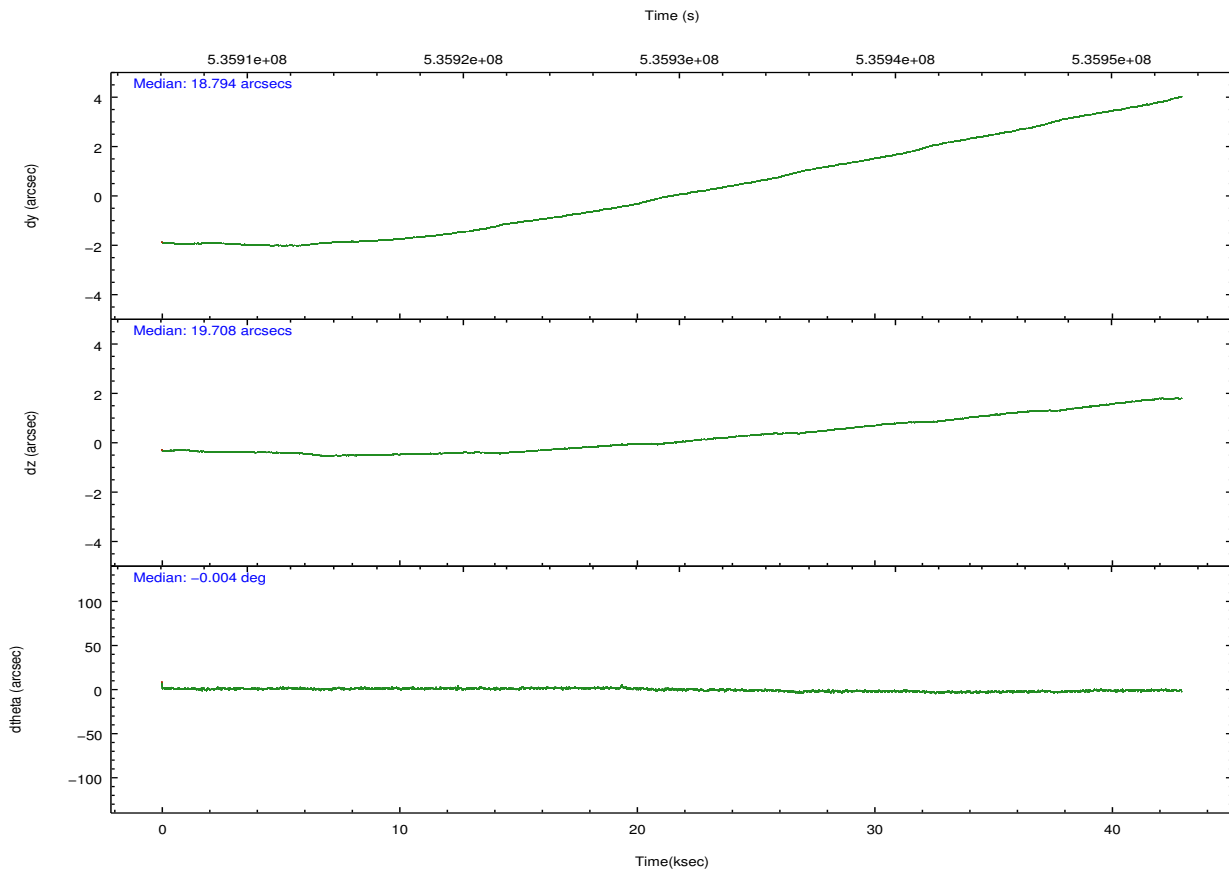
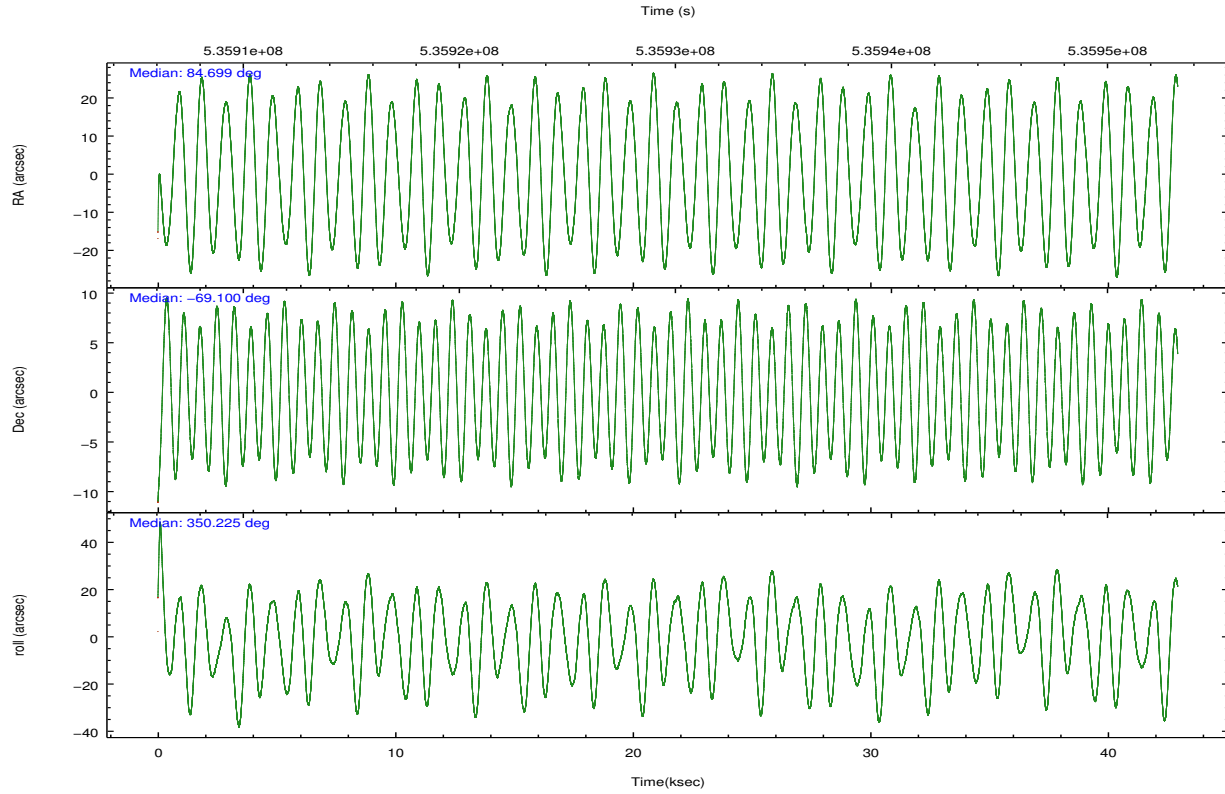
	ccd 0	ccd 1	ccd 2	ccd 3	ccd 6	ccd 7		ccd 0	ccd 1	ccd 2	ccd 3	ccd 6	ccd 7
level 1 events	169524	197900	184455	183908	186408	220866	grade 0 events	15925	37847	15704	21810	9220	13492
rejected events	138855	138971	154539	147142	162811	110852		9%	19%	8%	11%	4%	6%
rejected %	81%	70%	83%	80%	87%	50%	grade 1 events	142	257	114	185	98	313
								0%	0%	0%	0%	0%	0%
							grade 2 events	6042	8948	5790	5898	5252	24475
								3%	4%	3%	3%	2%	11%
							grade 3 events	2319	3289	2224	2437	2189	9919
								1%	1%	1%	1%	1%	4%
							grade 4 events	2192	3366	2323	2380	2187	9813
								1%	1%	1%	1%	1%	4%
							grade 5 events	7222	7884	6789	8211	8399	22696
								4%	3%	3%	4%	4%	10%
							grade 6 events	4196	5491	3878	4248	4752	52328
								2%	2%	2%	2%	2%	23%
							grade 7 events	131486	130818	147633	138739	154311	87830
								77%	66%	80%	75%	82%	39%

2.2 Compared Parameters

Parameter	Planned	Actual	Parameter	Planned	Actual
Instrument	ACIS	ACIS	Obspar format version number	7	7
Detector	ACIS-012367	ACIS-012367	Obspar file type	PREDICTED	ACTUAL
Grating	NONE	NONE	Obspar update status	NONE	UPDATED
Data mode	VFAINT	VFAINT	CCD I0 on	Y	Y
Observation mode	POINTING	POINTING	CCD I1 on	Y	Y
[deg] Pointing RA	84.626870	84.69939616760357	CCD I2 on	Y	Y
[deg] Pointing Dec	-69.109354	-69.09972151479568	CCD I3 on	Y	Y
[deg] Pointing Roll	349.953470	350.2299092646425	CCD S0 on	N	N
[mm] SIM focus pos	-0.782348	-0.7809083437167272	CCD S1 on	N	N
[mm] SIM defocus	0	0.001439871863259334	CCD S2 on	O1	Y
[mm] SIM translation stage pos	-233.592463	-233.5874344608287	CCD S3 on	O2	Y
[mm] SIM translation stage offset	0	-0.005018542100998502	CCD S4 on	N	N
[s] Observation start time (MET)	535908508.184000	535907461.27129	CCD S5 on	N	N
Observation start date	2014-12-25T15:27:21	2014-12-25T15:11:01	Number of optional ACIS chips dropped	0	0
[s] Observation end time (MET)	535951108.184000	535951668.49876	On-chip summing requested	N	N
Observation end date	2014-12-26T03:17:21	2014-12-26T03:27:48	Subarray requested	NONE	NONE
Read mode	TIMED	TIMED	Alternating exposures requested	N	N
			[s] Primary exposure time	0.000000	3.2

2.3 Aspect





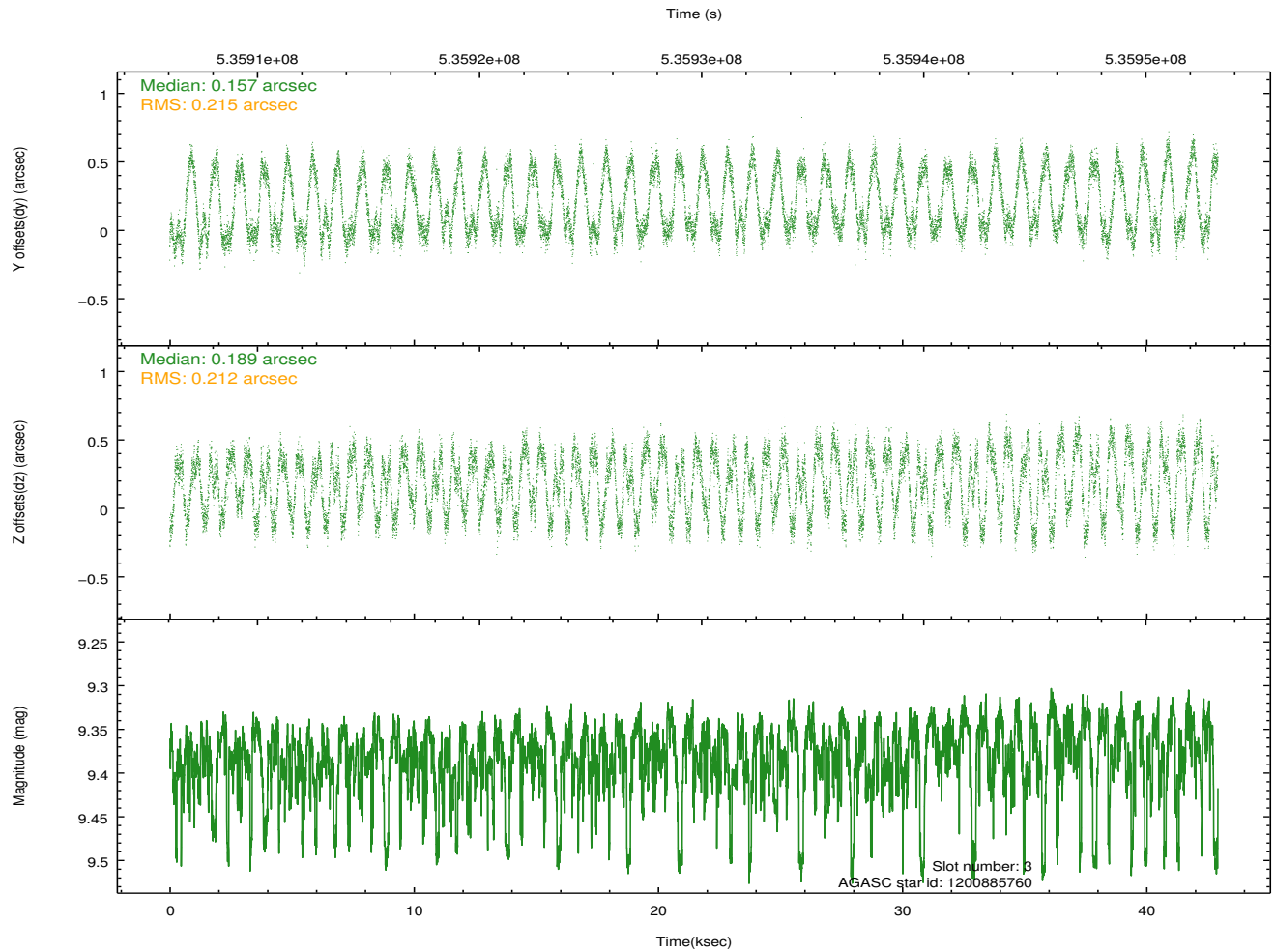
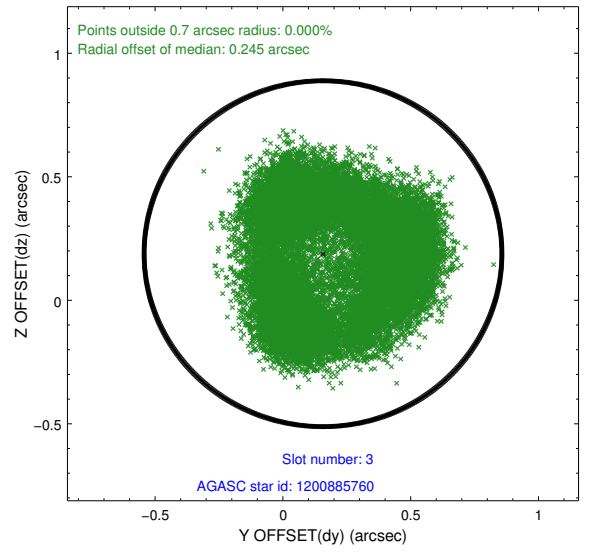
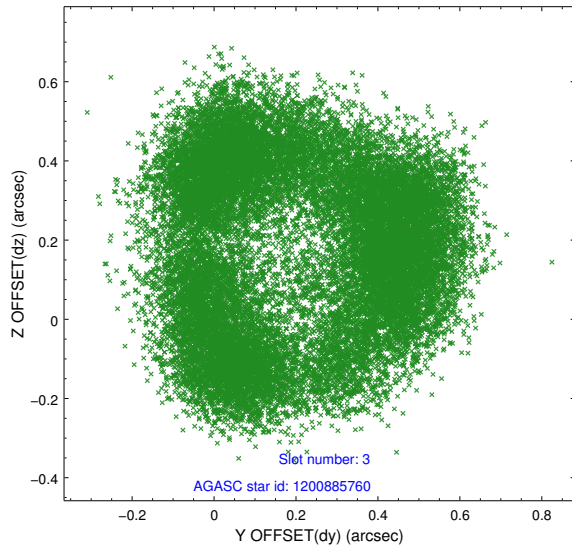
Slot Statistics

slot	status	used	id	mag	n_pts	med_dy	med_dz	dr1	dr2	ra	dec	mean_y	mean_z
0	FID		ACIS-I-2	7.00	10472	-0.095	-0.049	0.024	0.052	0.000000	0.000000	-773.97	-850.15
1	FID		ACIS-I-4	7.02	10471	0.258	0.072	0.024	0.062	0.000000	0.000000	2140.39	1056.23
2	FID		ACIS-I-5	7.07	10471	-0.263	0.048	0.024	0.035	0.000000	0.000000	-1828.01	1053.95
3	GUIDE	used	1200885760	9.38	20928	0.157	0.189	0.332	0.428	83.723637	-68.777667	-1365.42	961.85
4	GUIDE	used	1201018312	9.59	20929	-0.044	0.180	0.172	0.296	86.298231	-69.115627	2120.77	323.59
5	GUIDE	used	1201018384	9.04	20929	-0.166	-0.166	0.185	0.275	85.801362	-68.593260	1198.43	2084.38
6	GUIDE	used	1201020040	8.54	20872	-0.167	-0.122	0.120	0.206	85.379163	-68.879396	817.41	979.63
7	GUIDE	used	1200884248	9.41	20914	0.166	-0.069	0.140	0.230	83.880915	-68.565170	-1306.59	1752.27

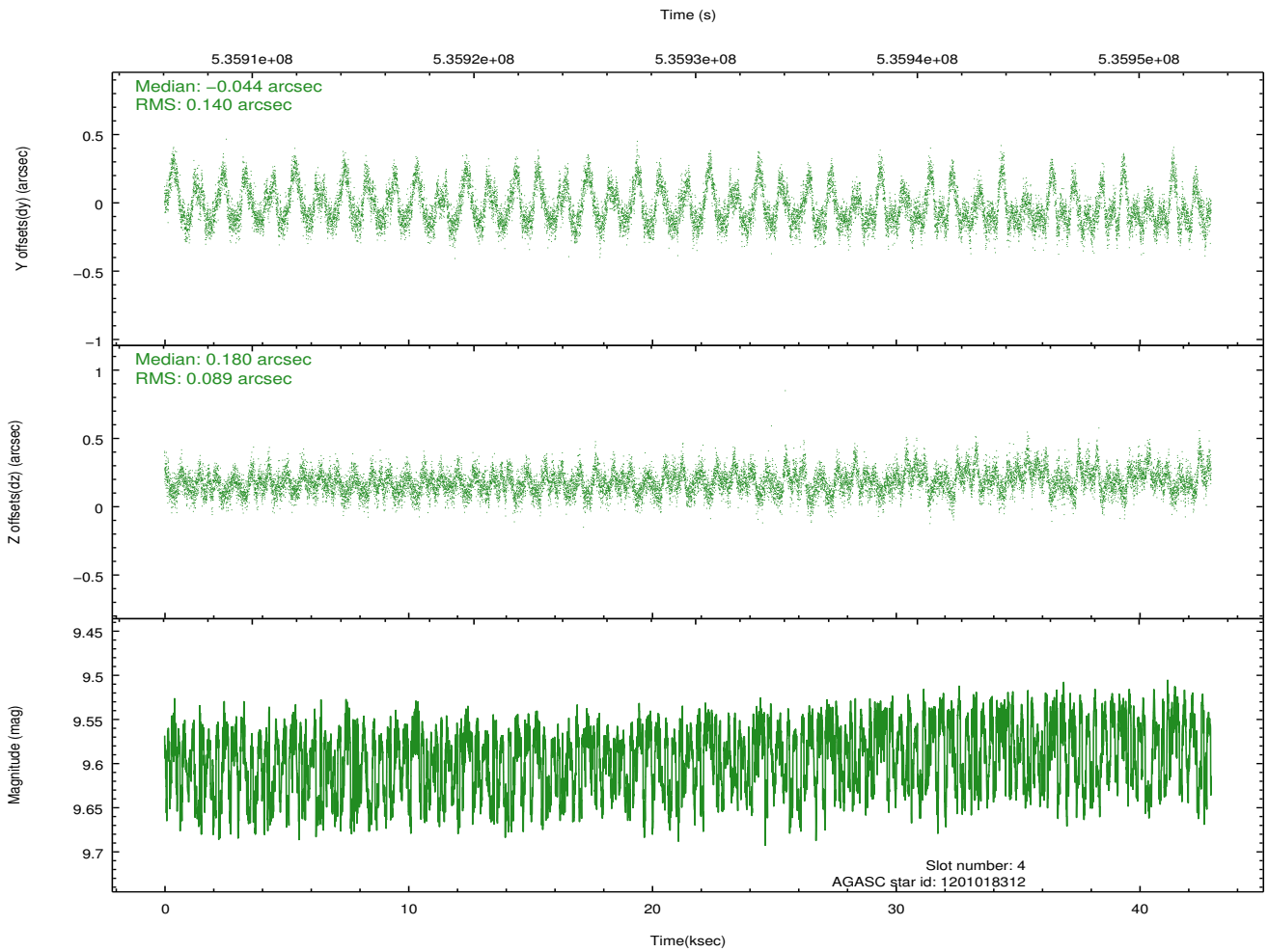
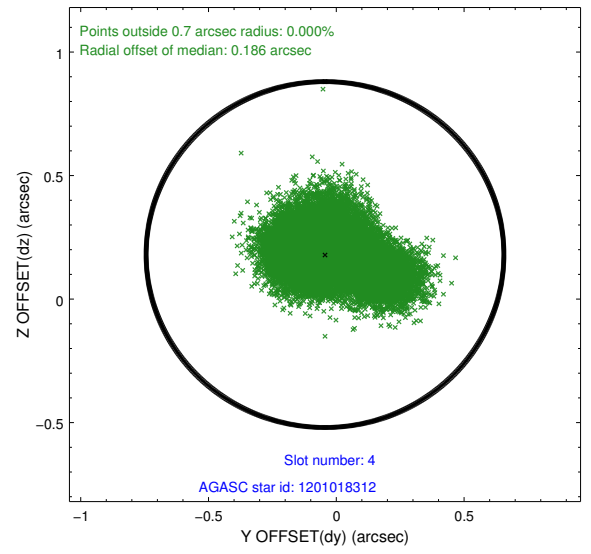
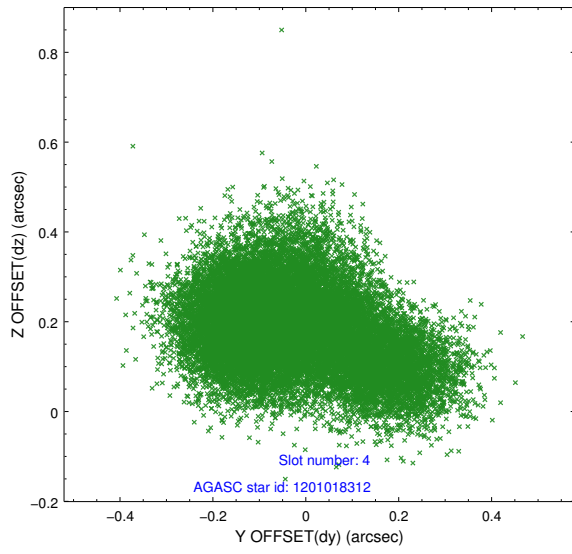
∞

2.4 Star Slots

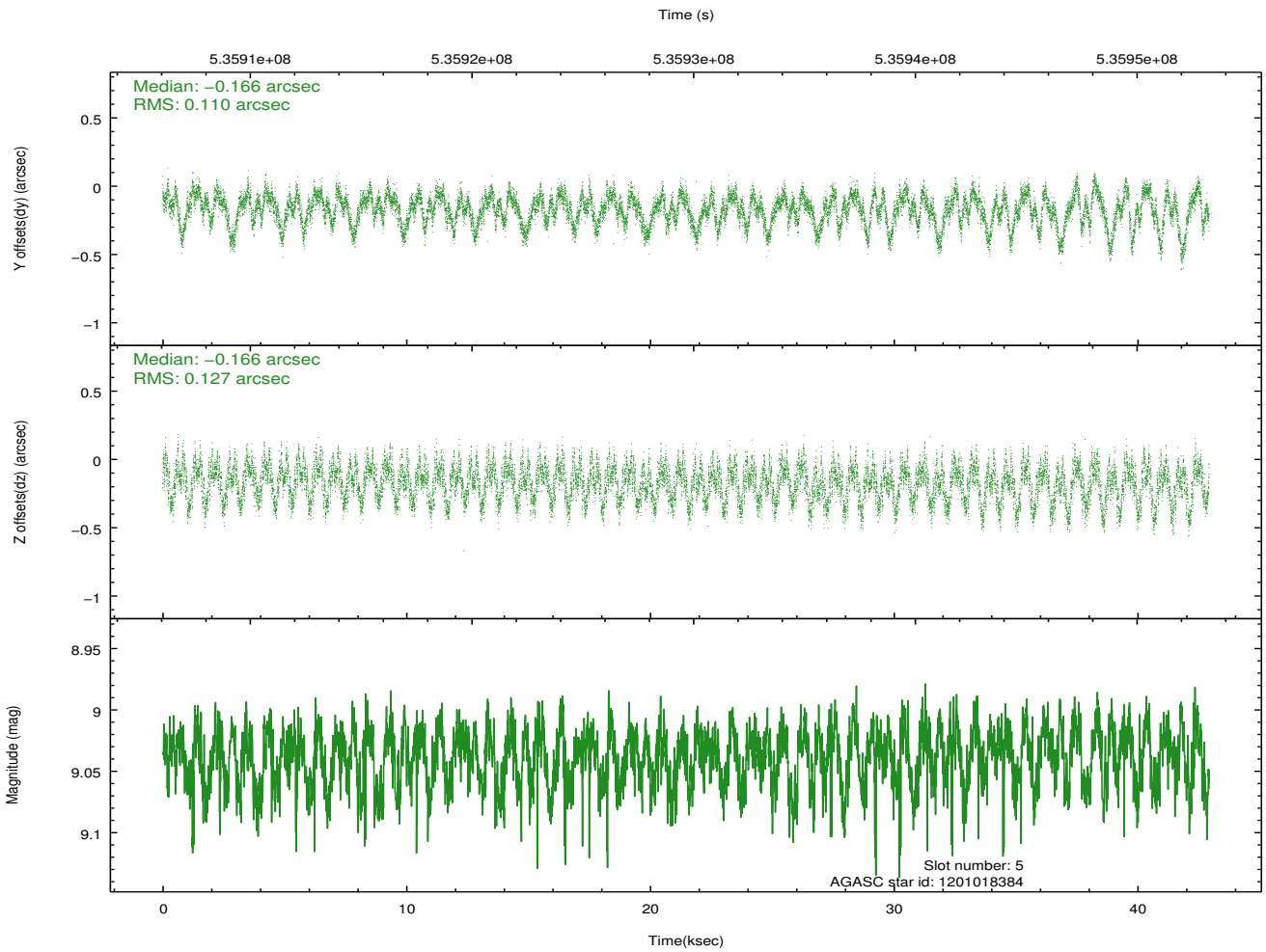
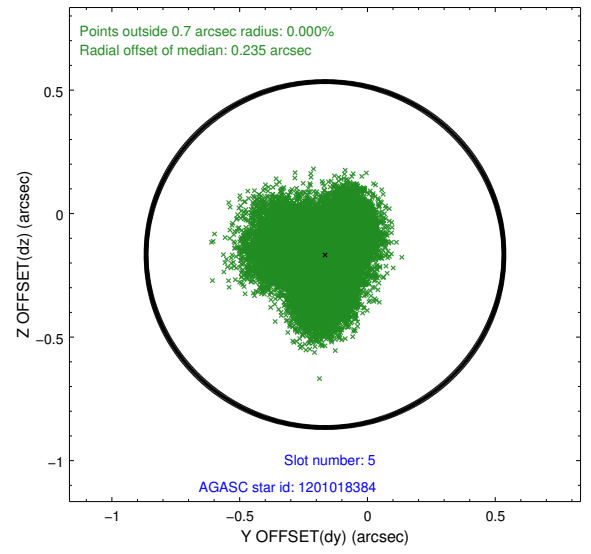
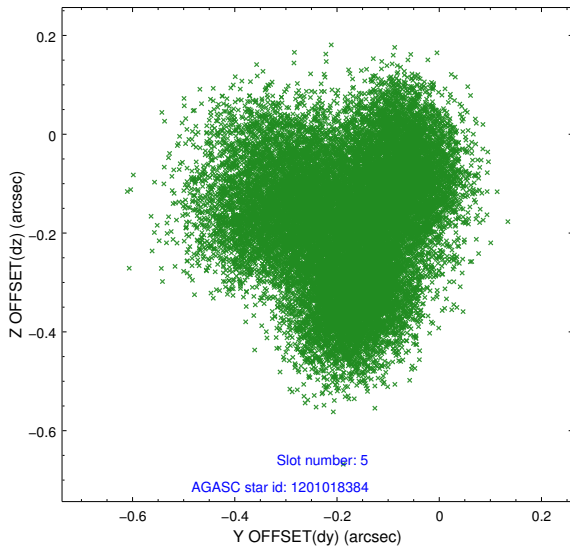
2.4.1 Slot 3



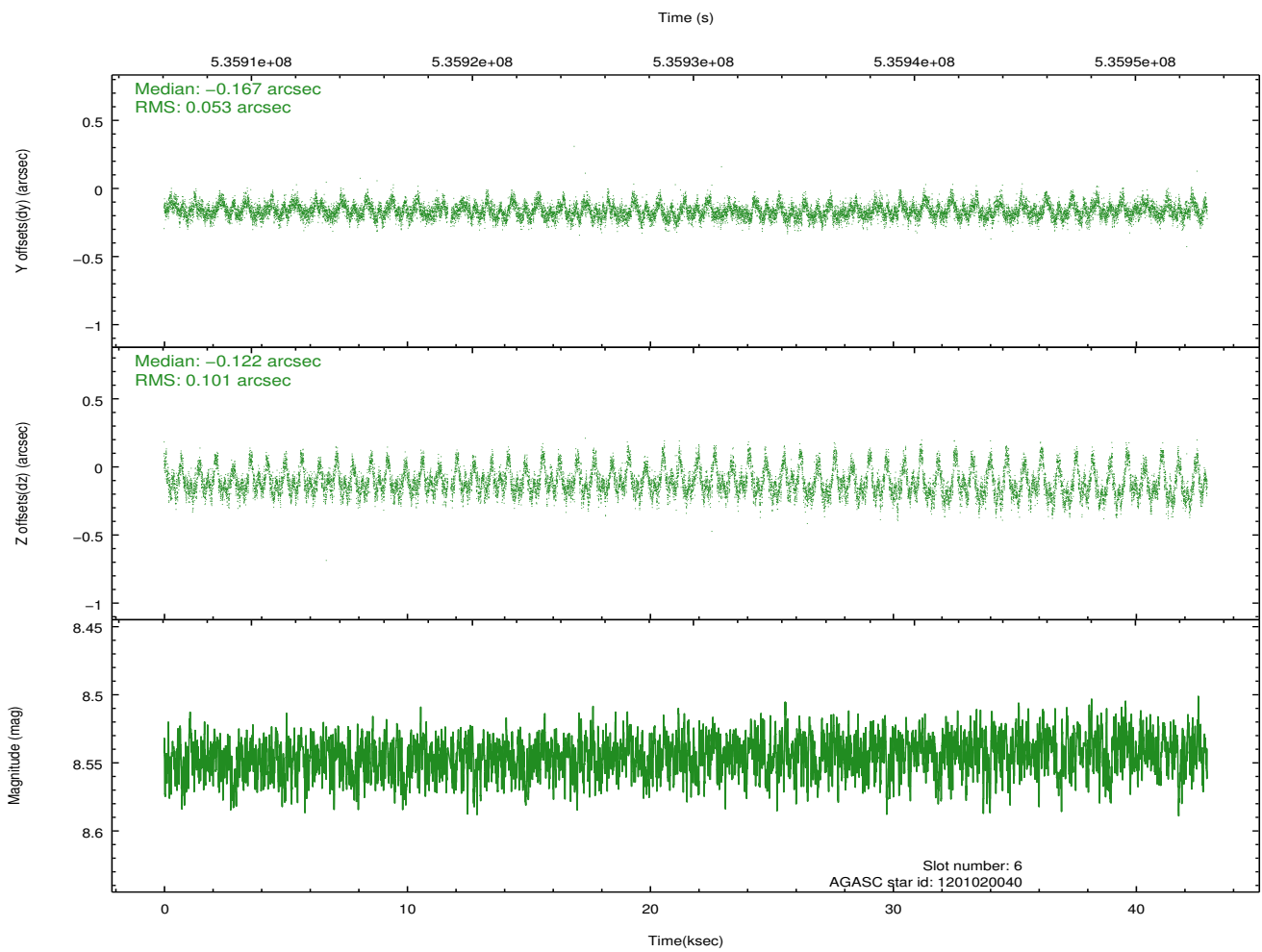
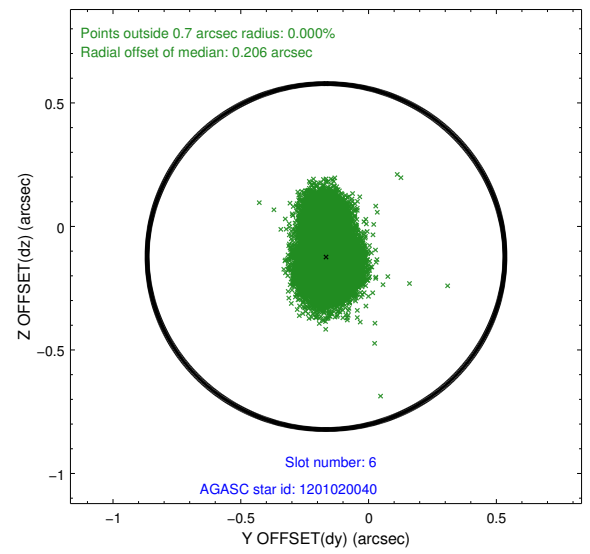
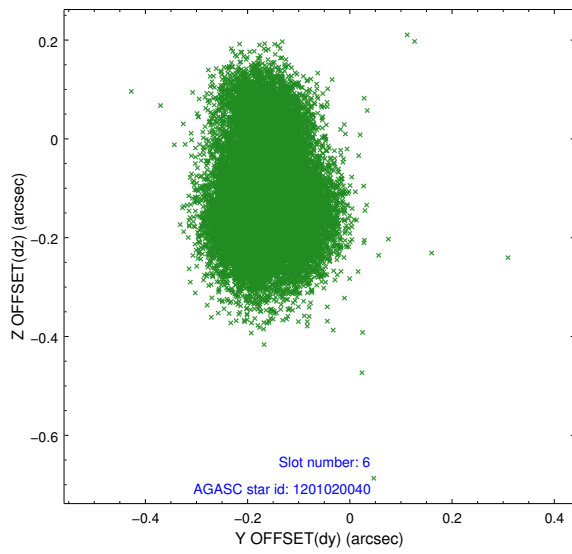
2.4.2 Slot 4



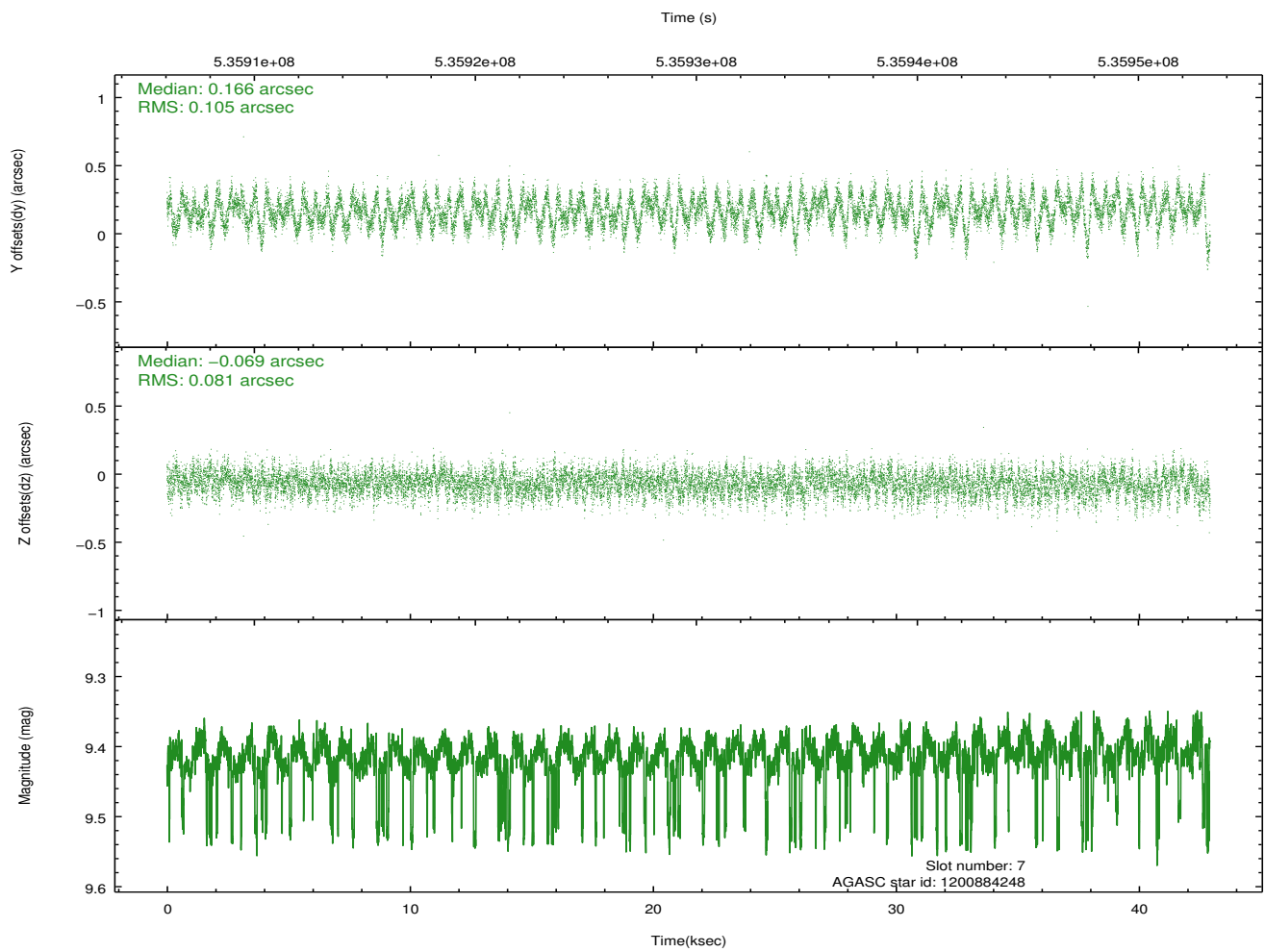
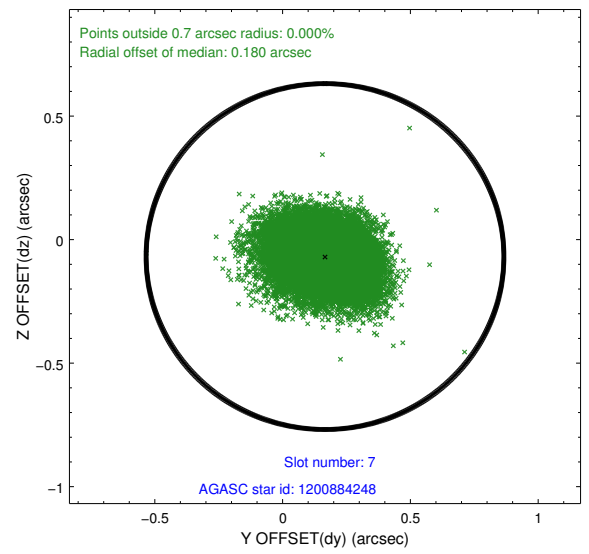
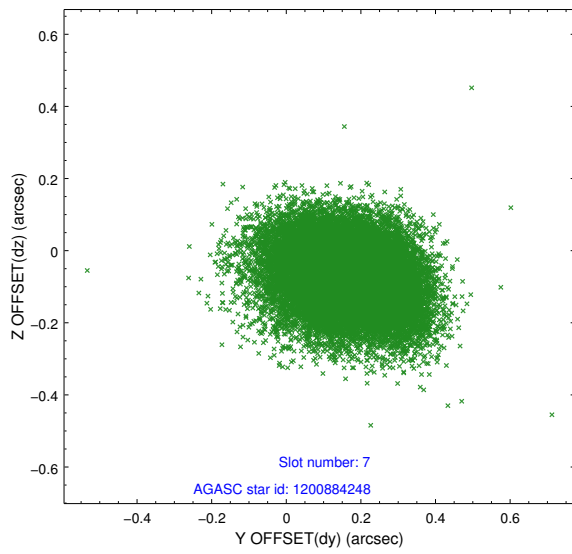
2.4.3 Slot 5



2.4.4 Slot 6

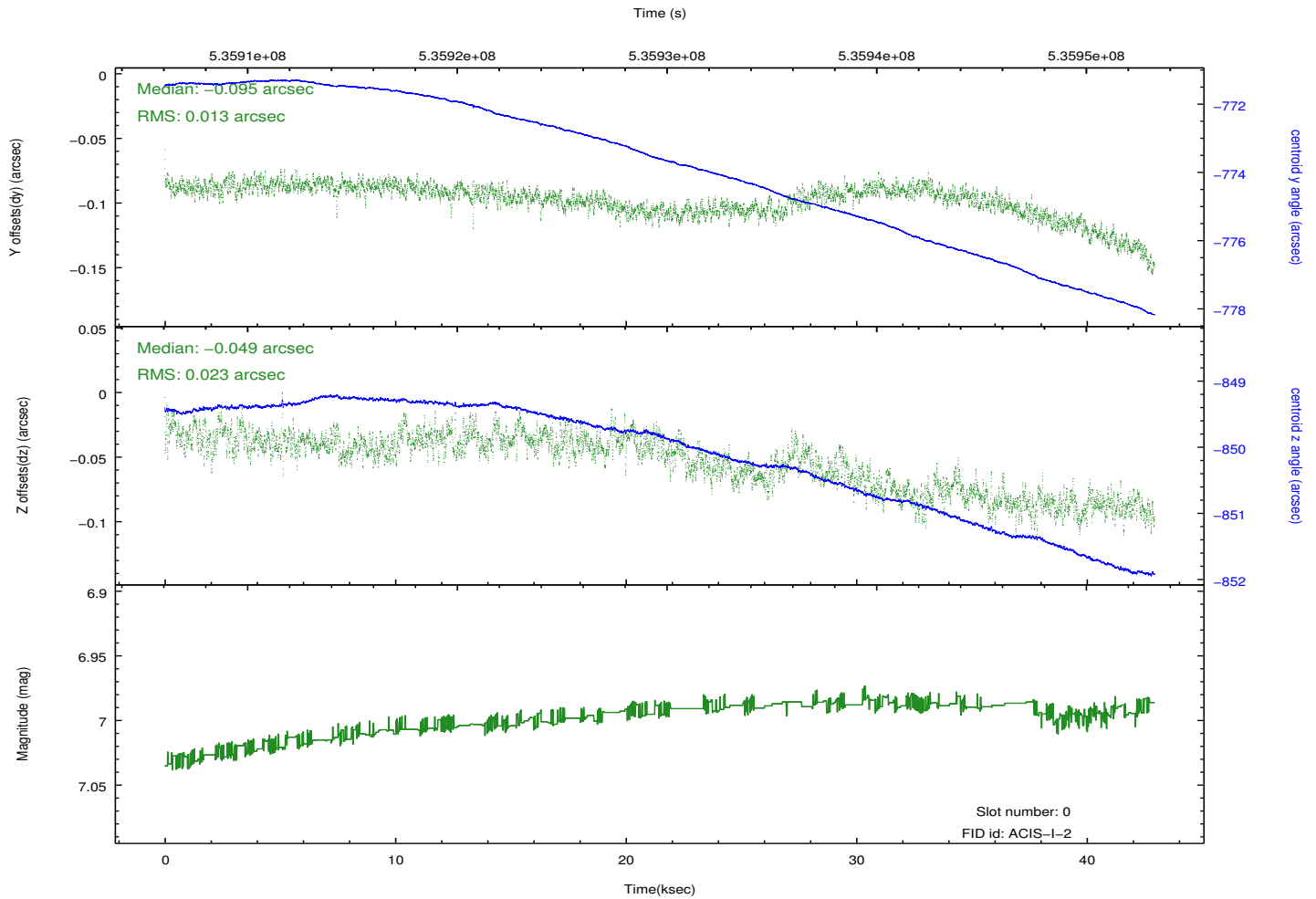
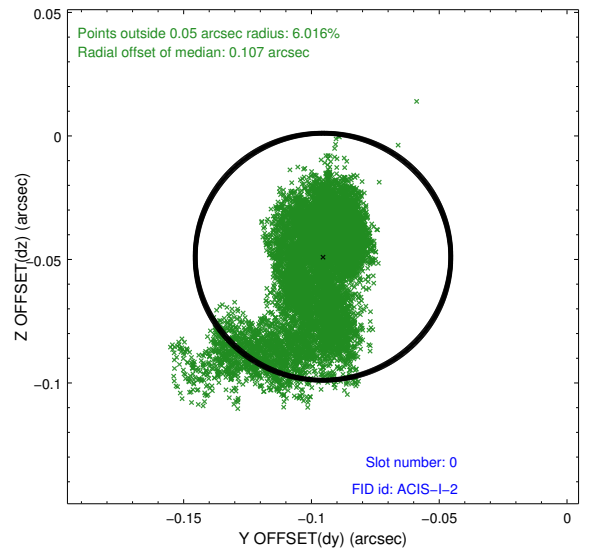
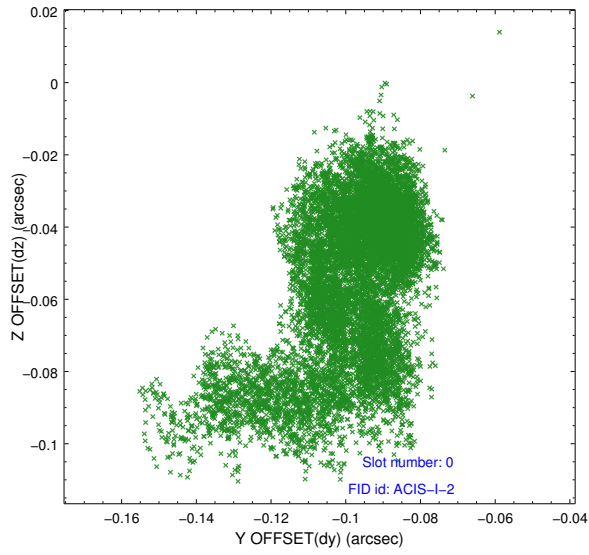


2.4.5 Slot 7

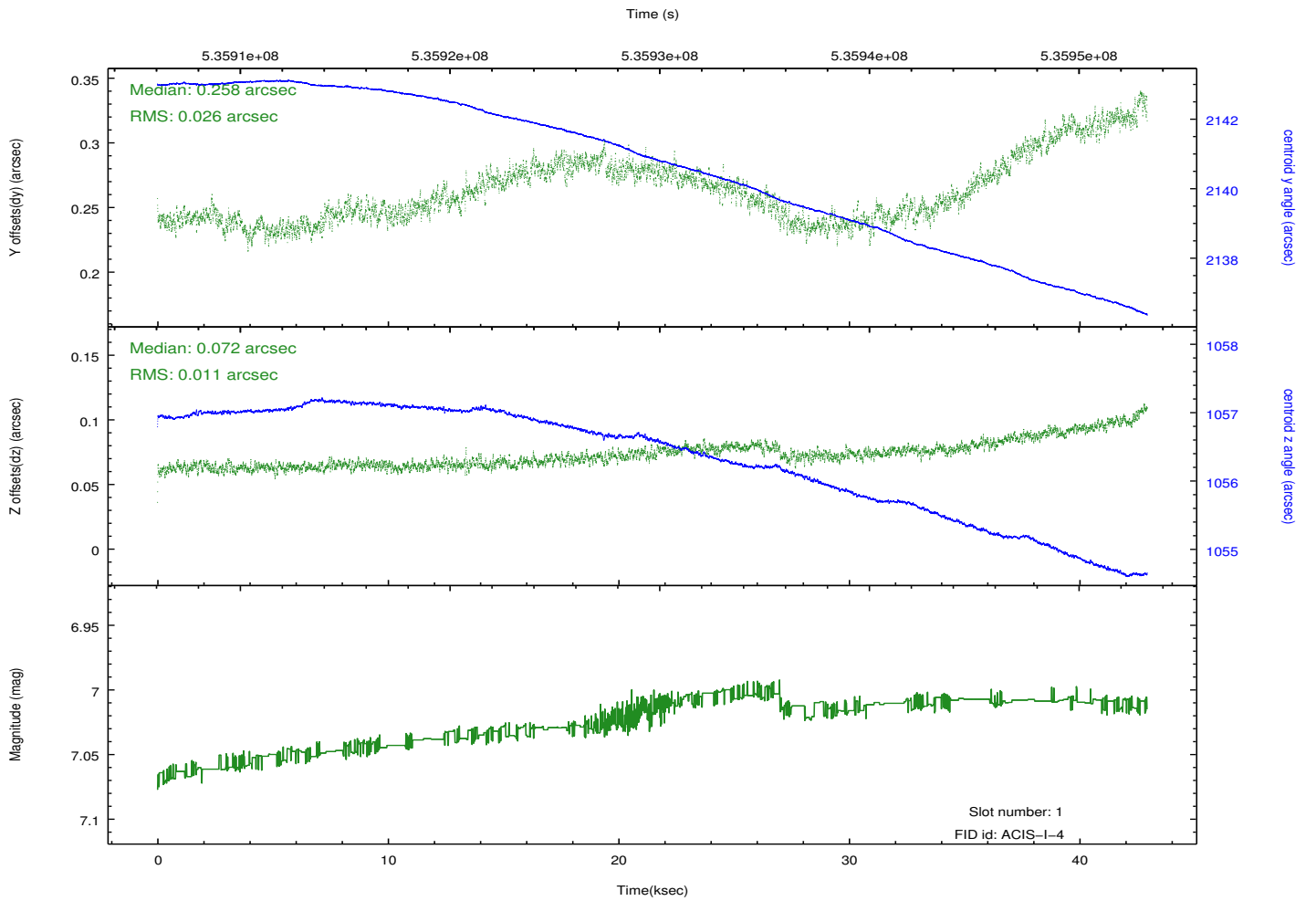
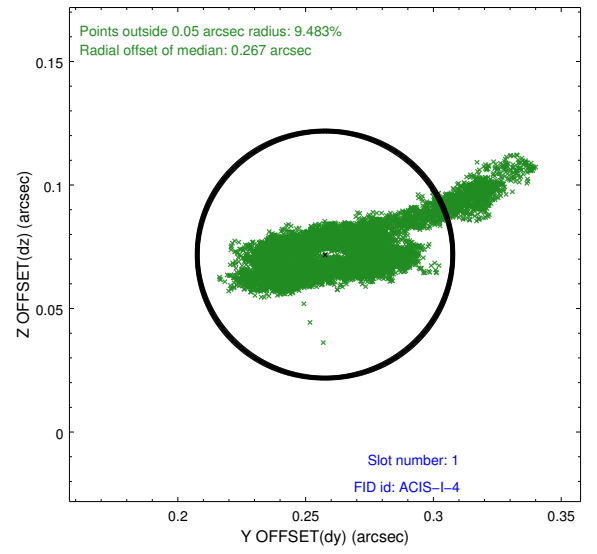
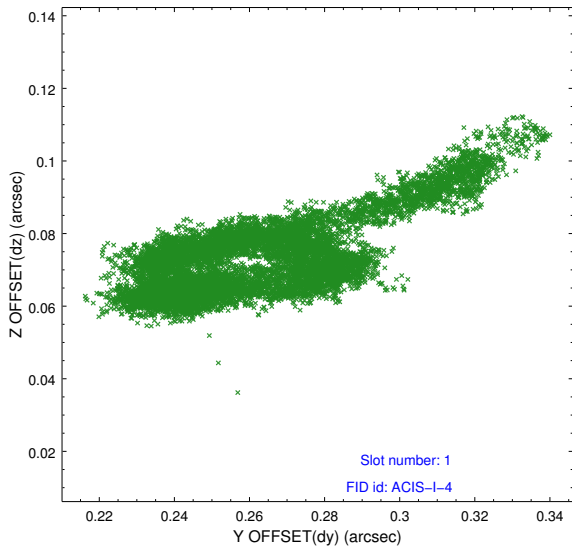


2.5 FID Slots

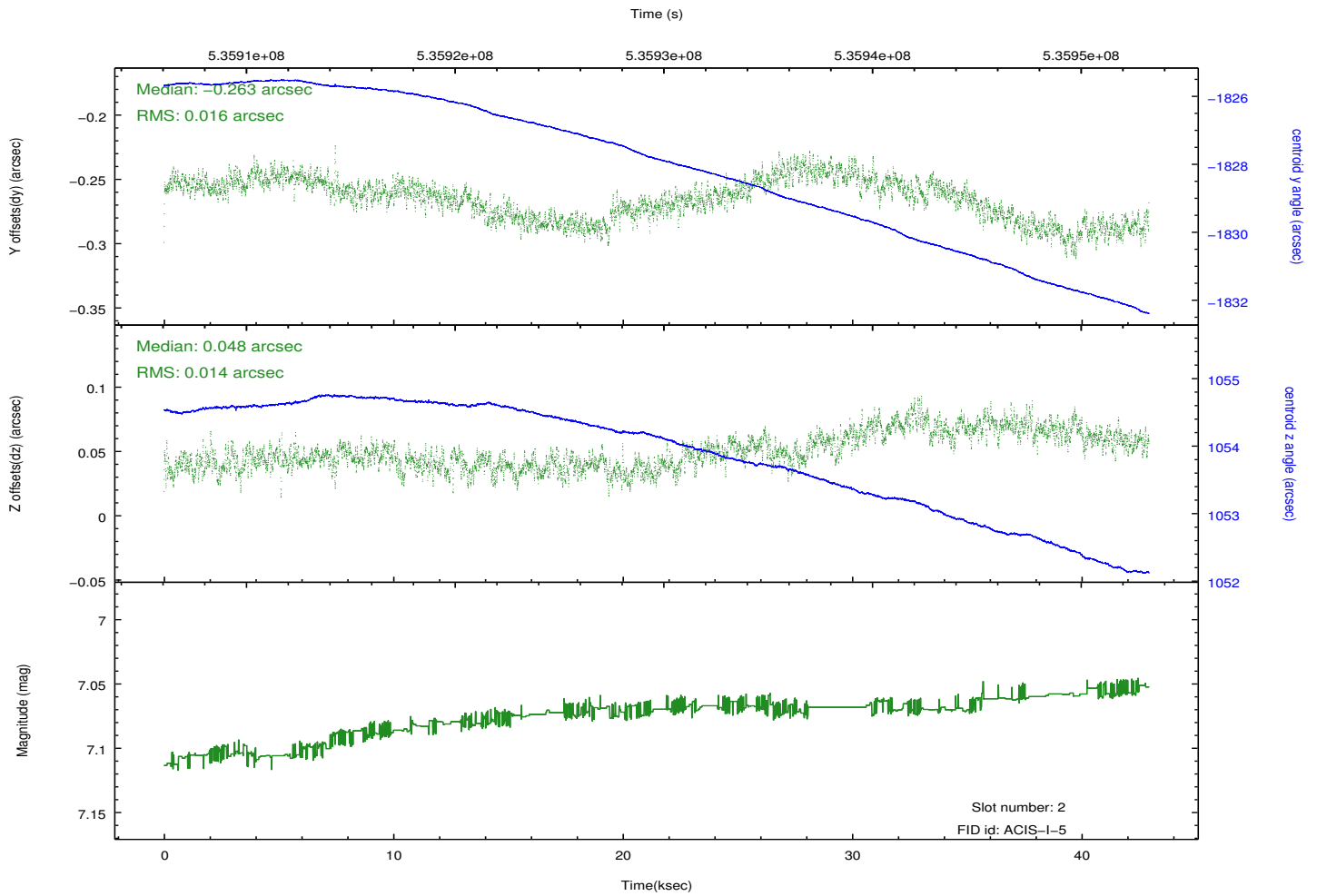
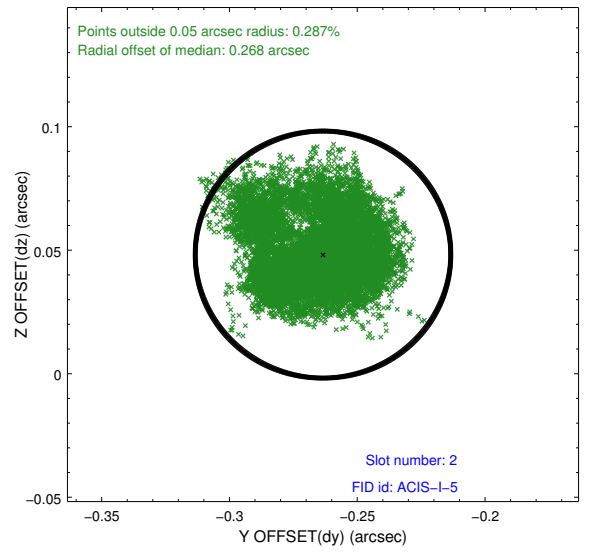
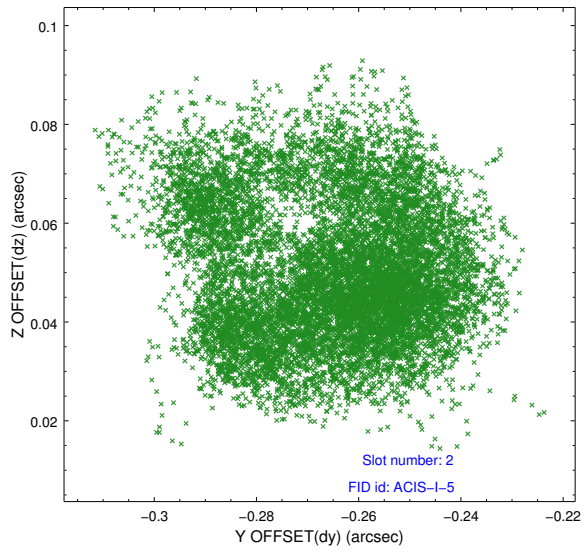
2.5.1 Slot 0



2.5.2 Slot 1



2.5.3 Slot 2



A Summary

A.1 Status

V&V Scientist	Jen Lauer
V&V Date (YYYY-MM-DD)	2014.12.29
V&V Edition	1
V&V Disposition and Status	OK
V&V Charge Time	42.569599841475

A.2 Comments